

Data Path : Z:\pestpcbsrv\HPCHEM1\ECD\_P\Data\PP020921\  
 Data File : PP033204.D  
 Signal(s) : Signal #1: ECD1A.CH Signal #2: ECD2B.CH  
 Acq On : 09 Feb 2021 23:17  
 Operator : DD\AJ  
 Sample : AR1262CCC500  
 Misc :  
 ALS Vial : 6 Sample Multiplier: 1

**Instrument :**  
 ECD\_P  
**ClientSampleId :**  
 AR1262CCC500

**Manual Integrations**  
**APPROVED**

Ankita  
 2/10/2021 1:56:43 PM

Integration File signal 1: autoint1.e  
 Integration File signal 2: autoint2.e  
 Quant Time: Feb 10 05:20:36 2021  
 Quant Method : Z:\pestpcbsrv\HPCHEM1\ECD\_P\methods\PP020821.M  
 Quant Title : GC EXTRACTABLES  
 QLast Update : Tue Feb 09 04:00:57 2021  
 Response via : Initial Calibration  
 Integrator: ChemStation 6890 Scale Mode: Small noise peaks clipped

Volume Inj. : 2 µl  
 Signal #1 Phase : ZB-MR1 Signal #2 Phase: ZB-MR2  
 Signal #1 Info : 30Mx0.32mmx 0.50µ Signal #2 Info : 30M x 0.32mm x 0.25µm

Compound	RT#1	RT#2	Resp#1	Resp#2	ng/ml	ng/ml
-----						
System Monitoring Compounds						
1) SA Tetrachlo...	4.731	4.004	3107531	2382392	50.675	58.261
2) SA Decachlor...	10.551	9.267	2339565	1995823	53.708	59.577
Target Compounds						
36) L8 AR-1262-1	8.333	7.357	1944570	731955	511.500	587.705
37) L8 AR-1262-2	8.875	7.908	3284367	2511477	524.583	571.106
38) L8 AR-1262-3	9.167	8.190	2181258	1018491	532.089	540.668
39) L8 AR-1262-4	9.254	8.256	1649629	1920533	529.119m	562.933
40) L8 AR-1262-5	9.867	8.753	1163764	917678	565.456	595.431
-----						

(f)=RT Delta > 1/2 Window (#)=Amounts differ by > 25% (m)=manual int.

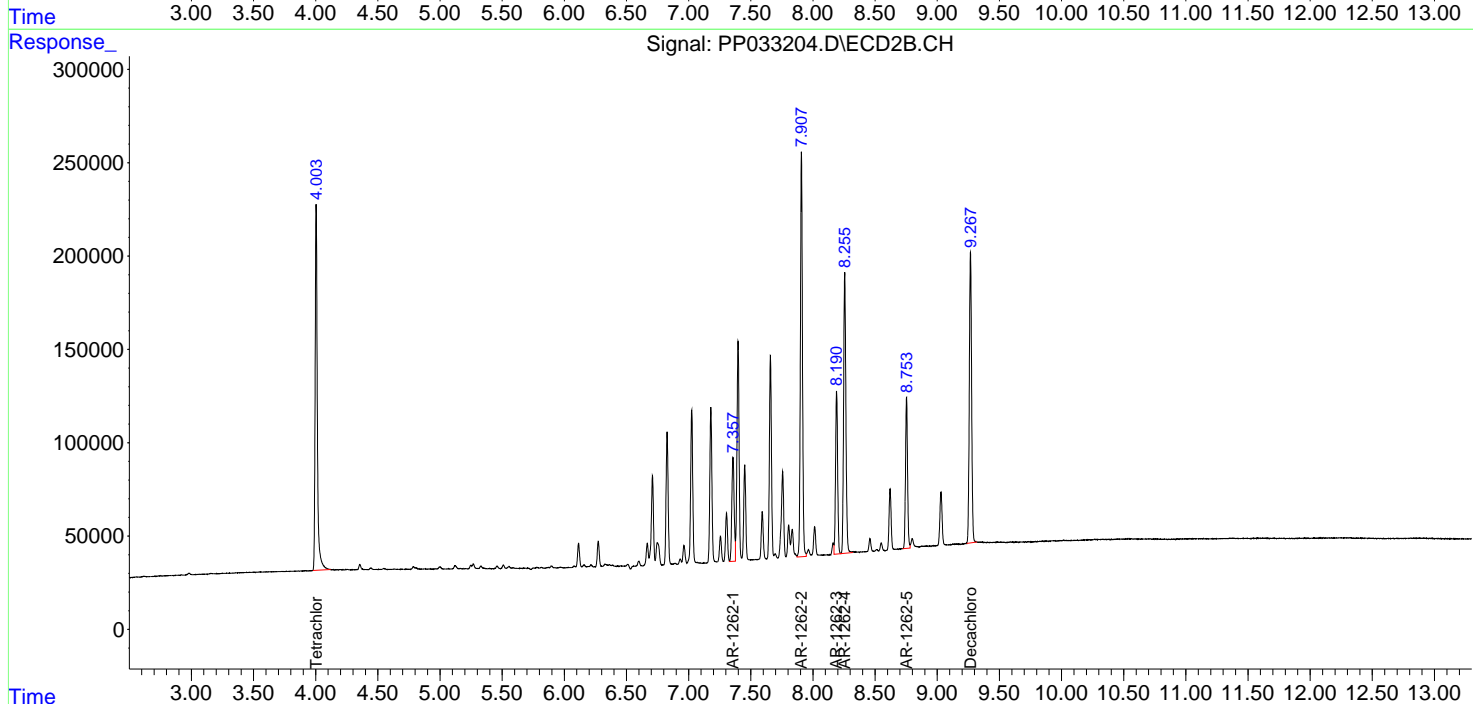
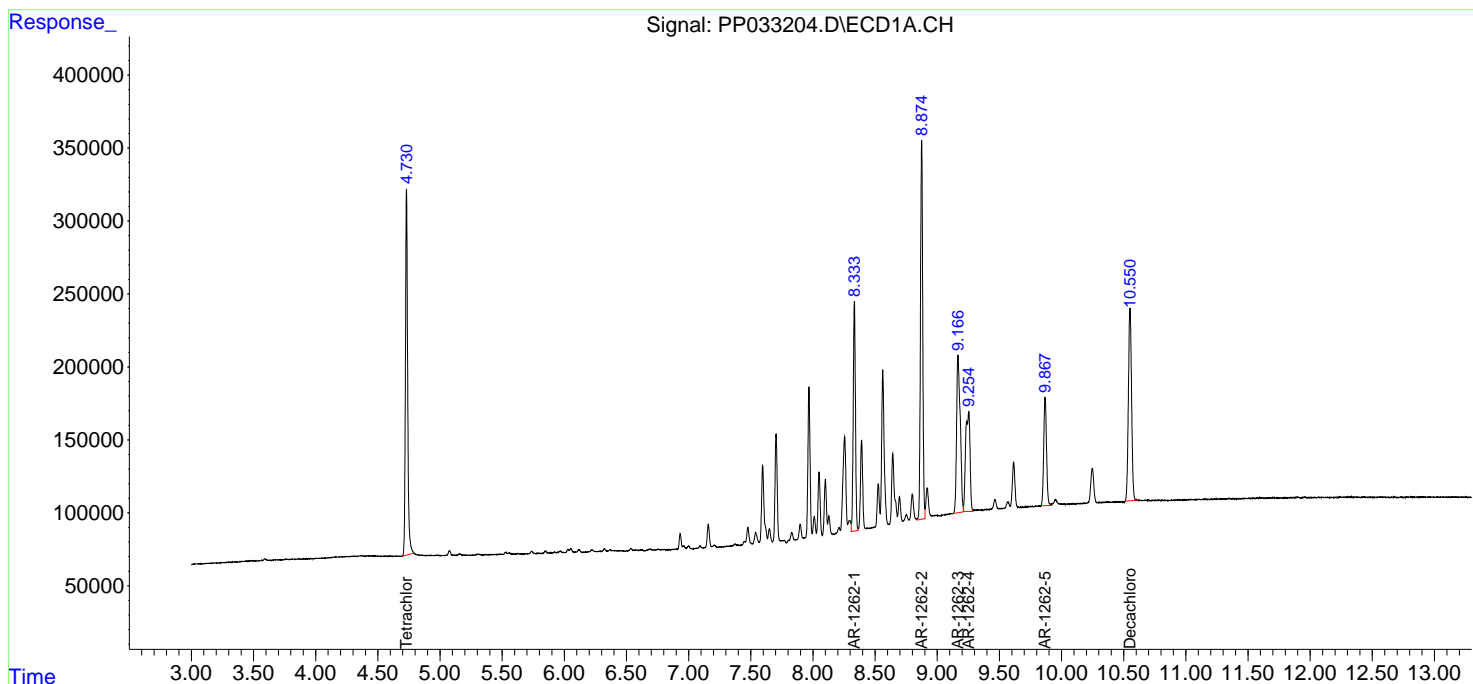
Data Path : Z:\pestpcbsrv\HPCHEM1\ECD\_P\Data\PP020921\  
 Data File : PP033204.D  
 Signal(s) : Signal #1: ECD1A.CH Signal #2: ECD2B.CH  
 Acq On : 09 Feb 2021 23:17  
 Operator : DD\AJ  
 Sample : AR1262CCC500  
 Misc :  
 ALS Vial : 6 Sample Multiplier: 1

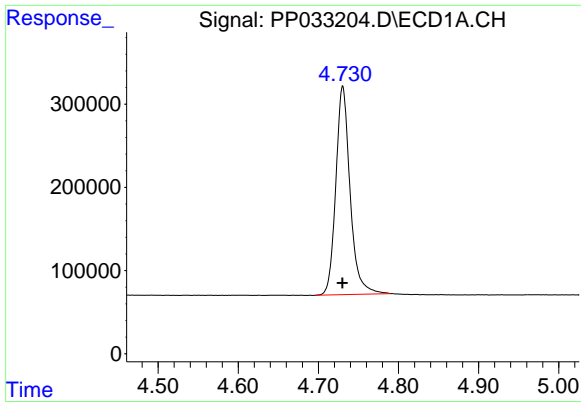
**Instrument :**  
 ECD\_P  
**Client Sampled :**  
 AR1262CCC500

**Manual Integrations**  
**APPROVED**  
 Ankita  
 2/10/2021 1:56:43 PM

Integration File signal 1: autoint1.e  
 Integration File signal 2: autoint2.e  
 Quant Time: Feb 10 05:20:36 2021  
 Quant Method : Z:\pestpcbsrv\HPCHEM1\ECD\_P\methods\PP020821.M  
 Quant Title : GC EXTRACTABLES  
 QLast Update : Tue Feb 09 04:00:57 2021  
 Response via : Initial Calibration  
 Integrator: ChemStation 6890 Scale Mode: Small noise peaks clipped

Volume Inj. : 2 µl  
 Signal #1 Phase : ZB-MR1 Signal #2 Phase: ZB-MR2  
 Signal #1 Info : 30Mx0.32mmx 0.50µ Signal #2 Info : 30M x 0.32mm x 0.25µm

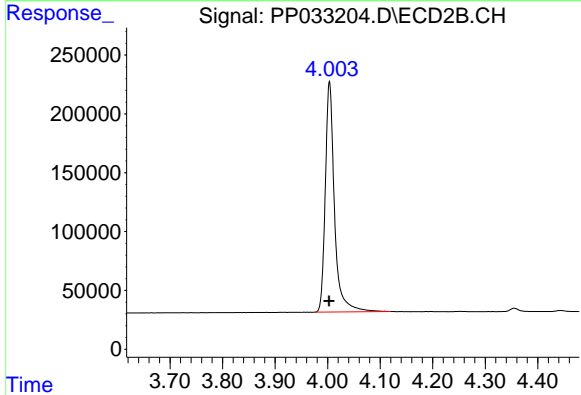




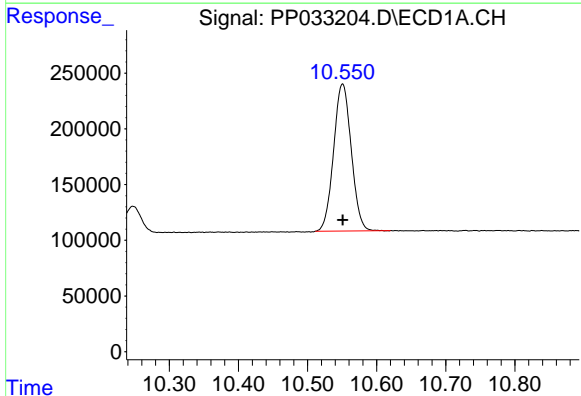
#1 Tetrachloro-m-xylene  
 R.T.: 4.731 min  
 Delta R.T.: 0.000 min  
 Response: 3107531  
 Conc: 50.68 ng/ml

Instrument :  
 ECD\_P  
 ClientSampleId :  
 AR1262CCC500

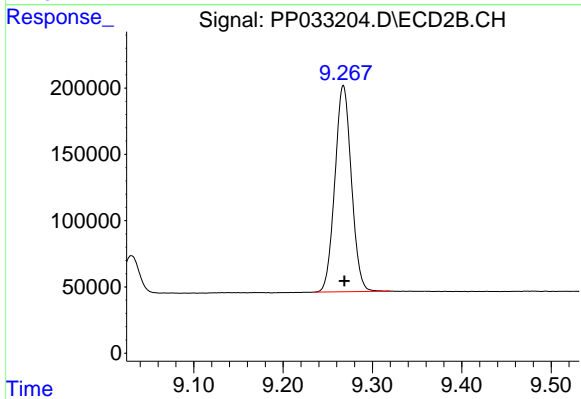
Manual Integrations  
 APPROVED  
 Ankita  
 2/10/2021 1:56:43 PM



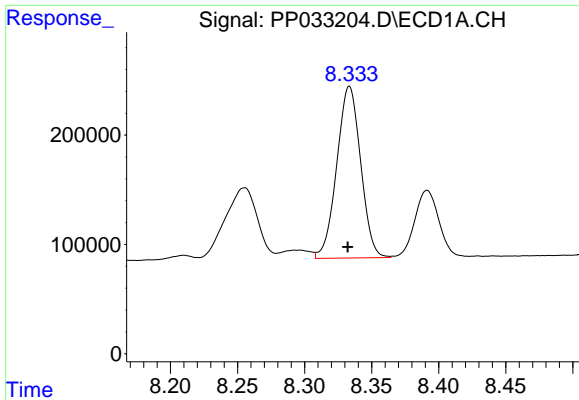
#1 Tetrachloro-m-xylene  
 R.T.: 4.004 min  
 Delta R.T.: 0.000 min  
 Response: 2382392  
 Conc: 58.26 ng/ml



#2 Decachlorobiphenyl  
 R.T.: 10.551 min  
 Delta R.T.: 0.000 min  
 Response: 2339565  
 Conc: 53.71 ng/ml



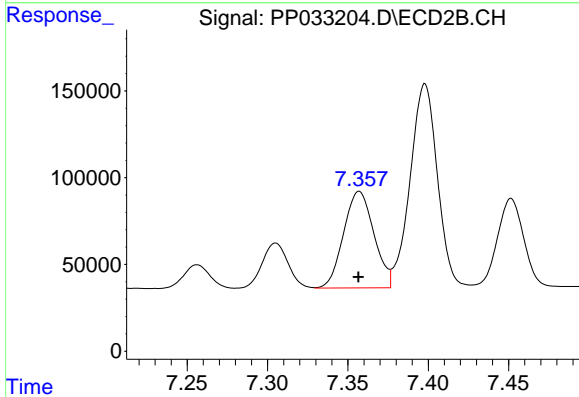
#2 Decachlorobiphenyl  
 R.T.: 9.267 min  
 Delta R.T.: 0.000 min  
 Response: 1995823  
 Conc: 59.58 ng/ml



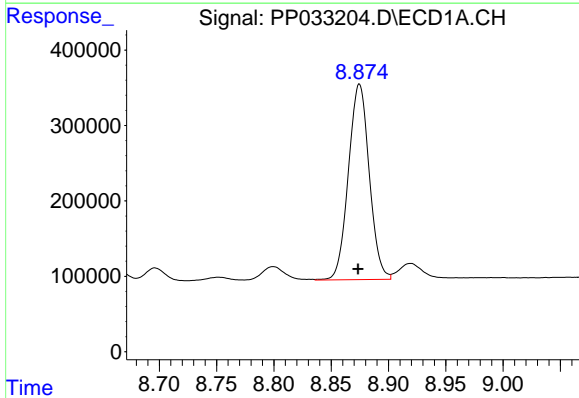
#36 AR-1262-1  
 R.T.: 8.333 min  
 Delta R.T.: 0.001 min  
 Response: 1944570  
 Conc: 511.50 ng/ml

**Instrument :**  
 ECD\_P  
**ClientSampled :**  
 AR1262CCC500

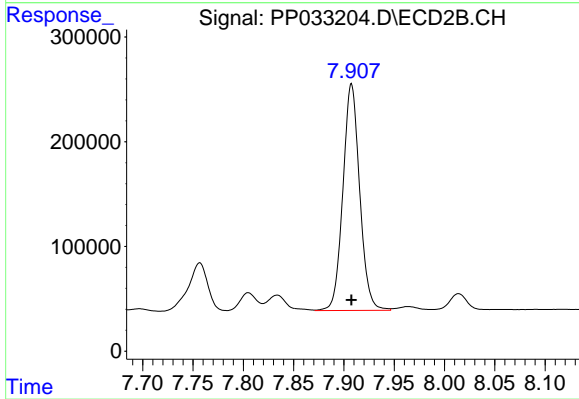
**Manual Integrations**  
**APPROVED**  
 Ankita  
 2/10/2021 1:56:43 PM



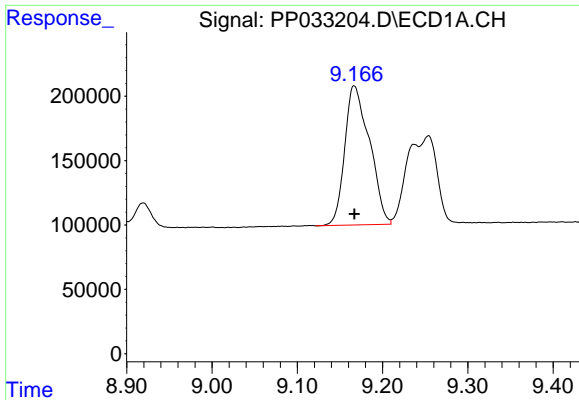
#36 AR-1262-1  
 R.T.: 7.357 min  
 Delta R.T.: 0.000 min  
 Response: 731955  
 Conc: 587.71 ng/ml



#37 AR-1262-2  
 R.T.: 8.875 min  
 Delta R.T.: 0.001 min  
 Response: 3284367  
 Conc: 524.58 ng/ml



#37 AR-1262-2  
 R.T.: 7.908 min  
 Delta R.T.: 0.000 min  
 Response: 2511477  
 Conc: 571.11 ng/ml

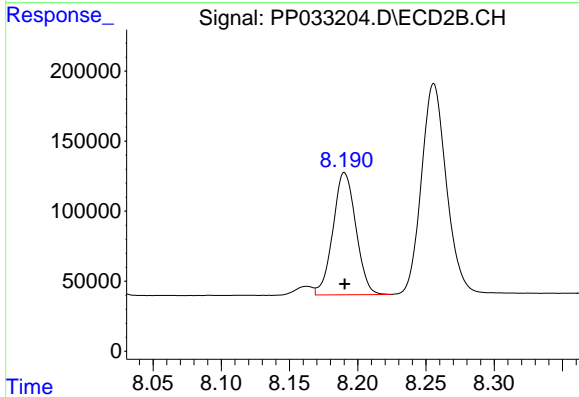


#38 AR-1262-3

R.T.: 9.167 min  
 Delta R.T.: 0.000 min  
 Response: 2181258  
 Conc: 532.09 ng/ml

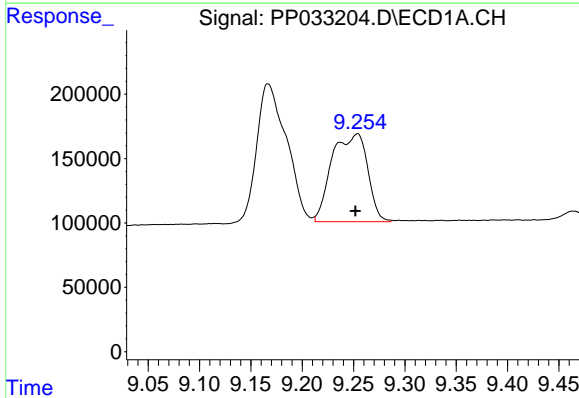
**Instrument :**  
 ECD\_P  
**ClientSampled :**  
 AR1262CCC500

**Manual Integrations**  
**APPROVED**  
 Ankita  
 2/10/2021 1:56:43 PM



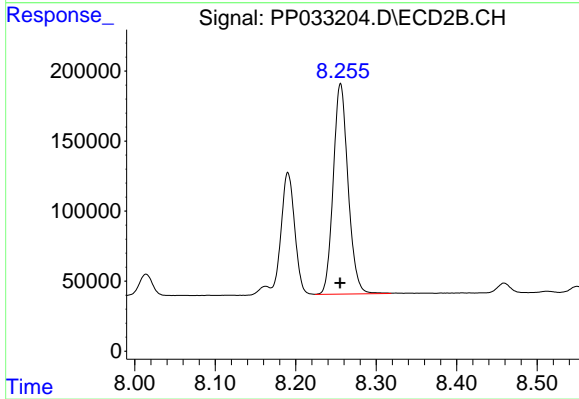
#38 AR-1262-3

R.T.: 8.190 min  
 Delta R.T.: 0.000 min  
 Response: 1018491  
 Conc: 540.67 ng/ml



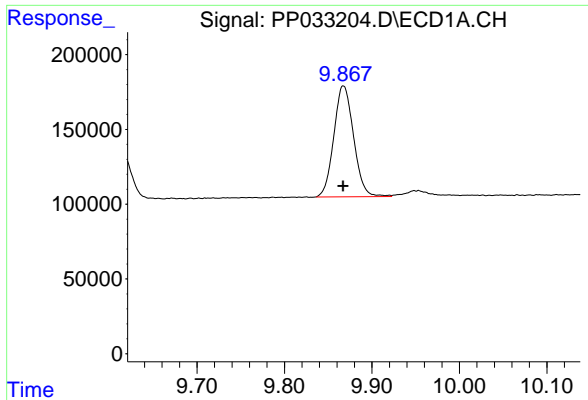
#39 AR-1262-4

R.T.: 9.254 min  
 Delta R.T.: 0.002 min  
 Response: 1649629  
 Conc: 529.12 ng/ml m



#39 AR-1262-4

R.T.: 8.256 min  
 Delta R.T.: 0.000 min  
 Response: 1920533  
 Conc: 562.93 ng/ml



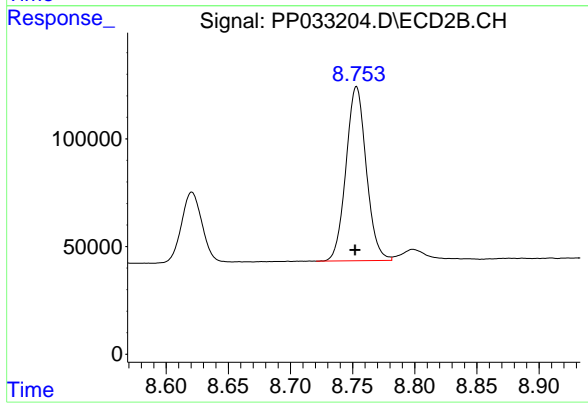
#40 AR-1262-5

R.T.: 9.867 min  
Delta R.T.: 0.000 min  
Response: 1163764  
Conc: 565.46 ng/ml

Instrument :  
ECD\_P  
ClientSampleId :  
AR1262CCC500

Manual Integrations  
APPROVED

Ankita  
2/10/2021 1:56:43 PM



#40 AR-1262-5

R.T.: 8.753 min  
Delta R.T.: 0.001 min  
Response: 917678  
Conc: 595.43 ng/ml