

Data Path : Z:\pestpcbsrv\HPCHEM1\ECD\_P\Data\PP020923\  
 Data File : PP055502.D  
 Signal(s) : Signal #1: ECD1A.ch Signal #2: ECD2B.ch  
 Acq On : 09 Feb 2023 16:43  
 Operator : YP\AJ  
 Sample : AR1254CCC500  
 Misc :  
 ALS Vial : 6 Sample Multiplier: 1

**Instrument :**  
 ECD\_P  
**ClientSampleId :**  
 AR1254CCC500

Integration File signal 1: autoint1.e  
 Integration File signal 2: autoint2.e  
 Quant Time: Feb 10 09:01:07 2023  
 Quant Method : Z:\pestpcbsrv\HPCHEM1\ECD\_P\methods\PP012423.M  
 Quant Title : GC EXTRACTABLES  
 QLast Update : Tue Jan 24 03:37:45 2023  
 Response via : Initial Calibration  
 Integrator: ChemStation

Volume Inj. : 2 µl  
 Signal #1 Phase : ZB-MR1 Signal #2 Phase: ZB-MR2  
 Signal #1 Info : 30Mx0.32mmx 0.50µ Signal #2 Info : 30M x 0.32mm x 0.25µm

Compound	RT#1	RT#2	Resp#1	Resp#2	ng/ml	ng/ml
-----						
System Monitoring Compounds						
1) SA Tetrachlo...	4.328	3.575	84032116	74684700	48.330	49.750
2) SA Decachlor...	10.079	8.582	79424064	64720278	45.866	47.921
Target Compounds						
26) L6 AR-1254-1	6.356	5.459	32947364	39209257	417.624	485.515
27) L6 AR-1254-2	6.576	5.607	49802965	34224475	411.516	478.245
28) L6 AR-1254-3	6.943	6.011	50921166	54044629	415.717	485.107
29) L6 AR-1254-4	7.230	6.240	34984750	28282225	397.049	459.818
30) L6 AR-1254-5	7.651	6.659	39602043	44752798	391.476	472.056
-----						

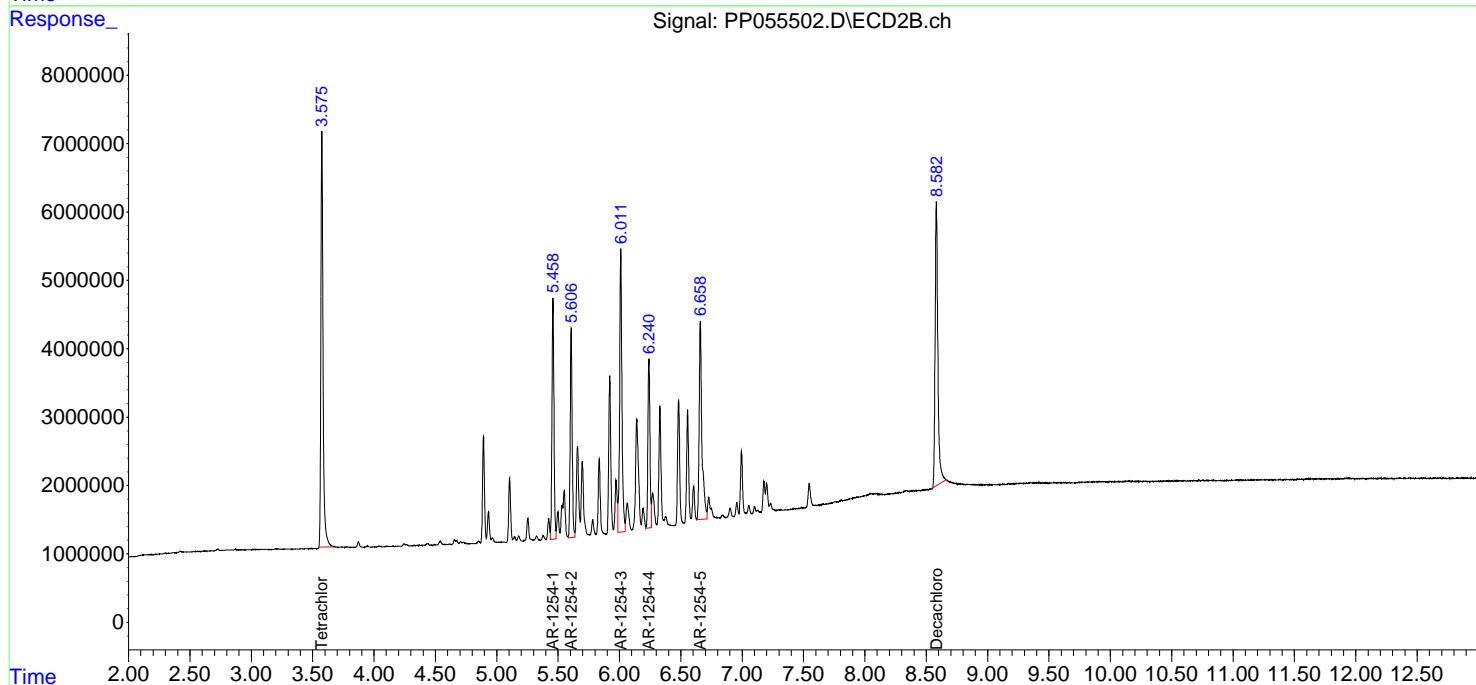
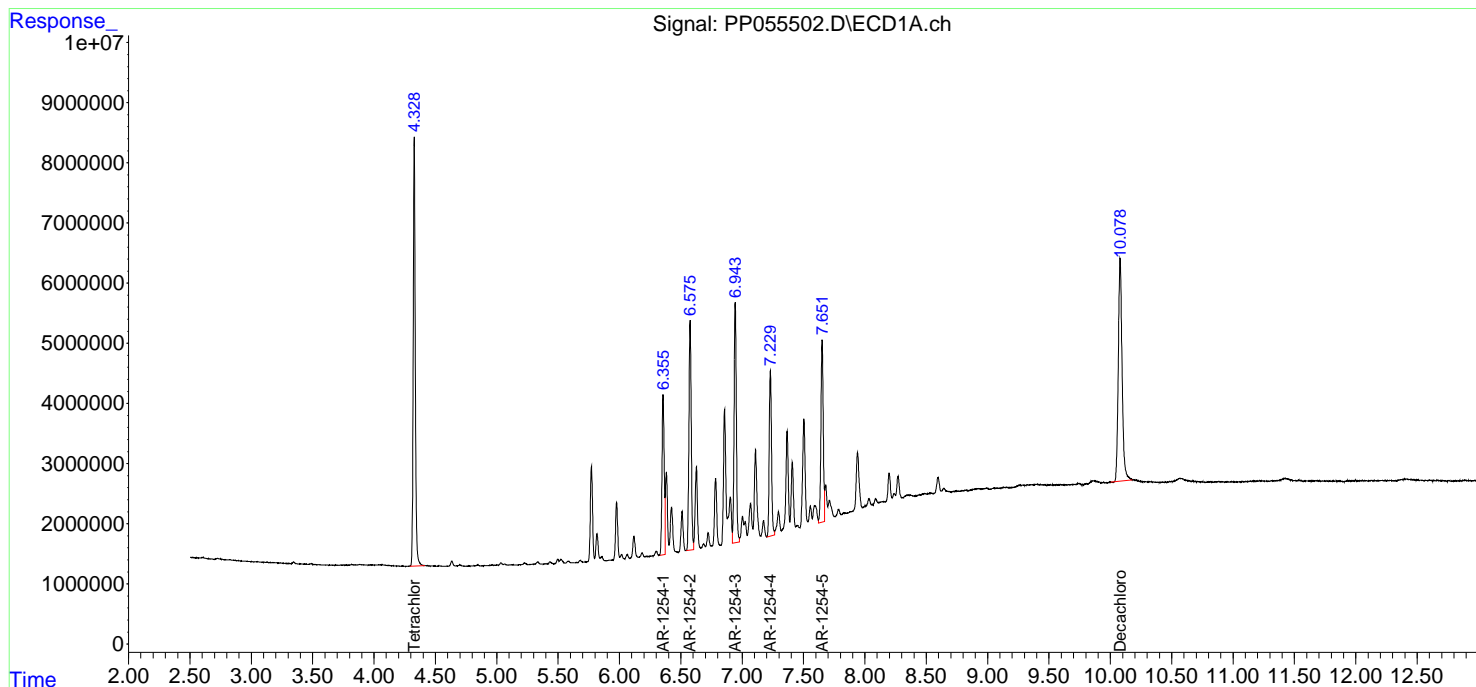
(f)=RT Delta > 1/2 Window (#)=Amounts differ by > 25% (m)=manual int.

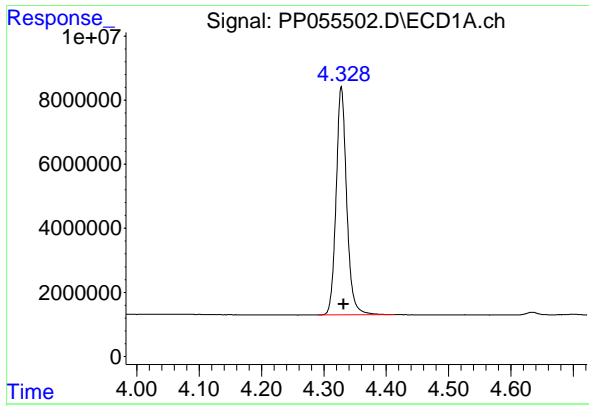
Data Path : Z:\pestpcbsrv\HPCHEM1\ECD\_P\Data\PP020923\  
 Data File : PP055502.D  
 Signal(s) : Signal #1: ECD1A.ch Signal #2: ECD2B.ch  
 Acq On : 09 Feb 2023 16:43  
 Operator : YP\AJ  
 Sample : AR1254CCC500  
 Misc :  
 ALS Vial : 6 Sample Multiplier: 1

Instrument :  
 ECD\_P  
 ClientSampleId :  
 AR1254CCC500

Integration File signal 1: autoint1.e  
 Integration File signal 2: autoint2.e  
 Quant Time: Feb 10 09:01:07 2023  
 Quant Method : Z:\pestpcbsrv\HPCHEM1\ECD\_P\methods\PP012423.M  
 Quant Title : GC EXTRACTABLES  
 QLast Update : Tue Jan 24 03:37:45 2023  
 Response via : Initial Calibration  
 Integrator: ChemStation

Volume Inj. : 2 µl  
 Signal #1 Phase : ZB-MR1 Signal #2 Phase: ZB-MR2  
 Signal #1 Info : 30Mx0.32mmx 0.50µm Signal #2 Info : 30M x 0.32mm x 0.25µm

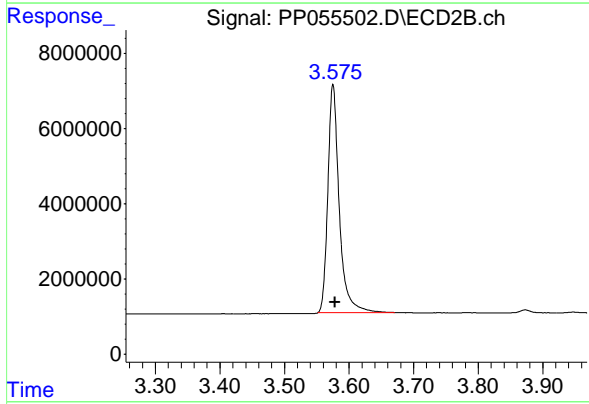




#1 Tetrachloro-m-xylene

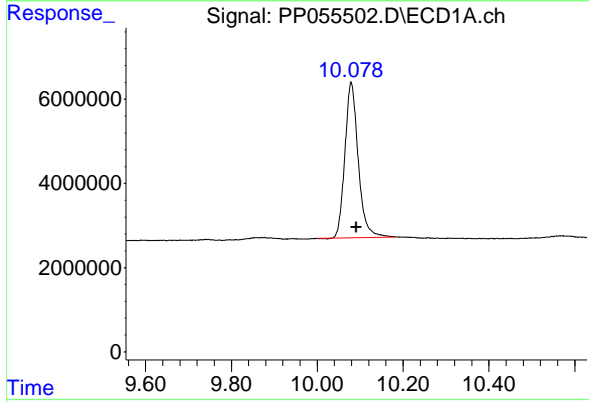
R.T.: 4.328 min  
 Delta R.T.: -0.004 min  
 Response: 84032116  
 Conc: 48.33 ng/ml

Instrument :  
 ECD\_P  
 ClientSampleId :  
 AR1254CCC500



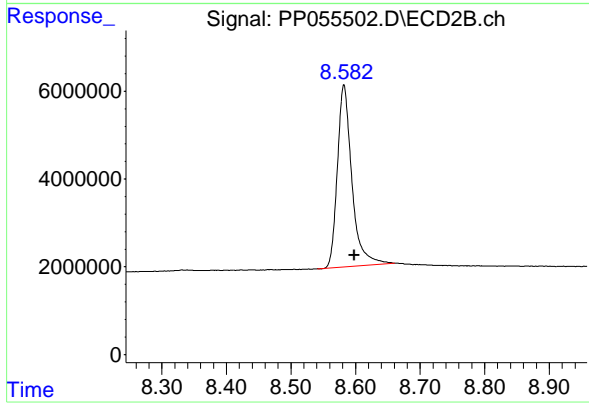
#1 Tetrachloro-m-xylene

R.T.: 3.575 min  
 Delta R.T.: -0.003 min  
 Response: 74684700  
 Conc: 49.75 ng/ml



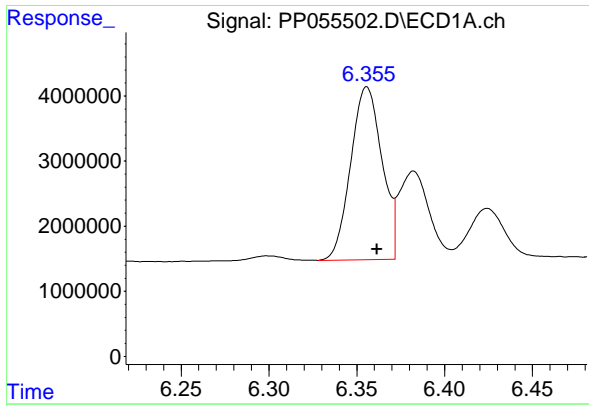
#2 Decachlorobiphenyl

R.T.: 10.079 min  
 Delta R.T.: -0.012 min  
 Response: 79424064  
 Conc: 45.87 ng/ml



#2 Decachlorobiphenyl

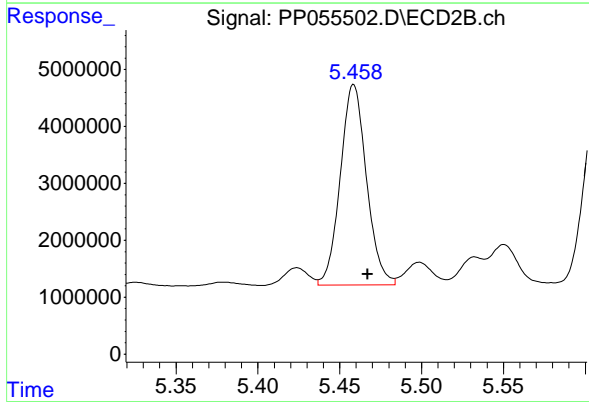
R.T.: 8.582 min  
 Delta R.T.: -0.016 min  
 Response: 64720278  
 Conc: 47.92 ng/ml



#26 AR-1254-1

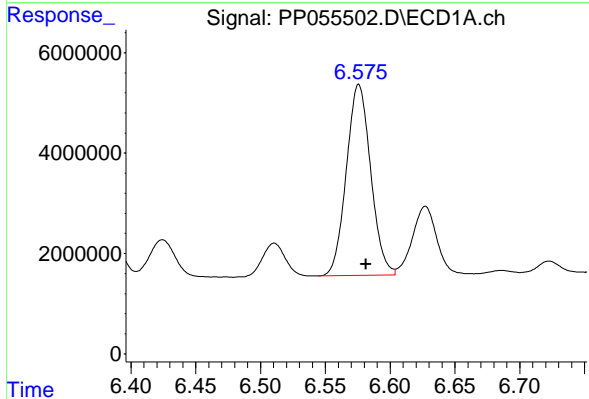
R.T.: 6.356 min  
 Delta R.T.: -0.006 min  
 Response: 32947364  
 Conc: 417.62 ng/ml

Instrument :  
 ECD\_P  
 ClientSampleId :  
 AR1254CCC500



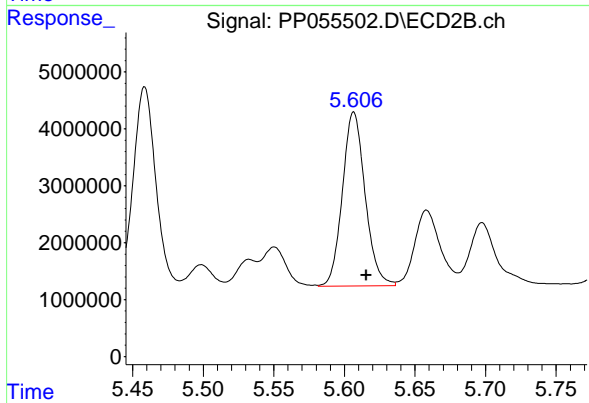
#26 AR-1254-1

R.T.: 5.459 min  
 Delta R.T.: -0.009 min  
 Response: 39209257  
 Conc: 485.51 ng/ml



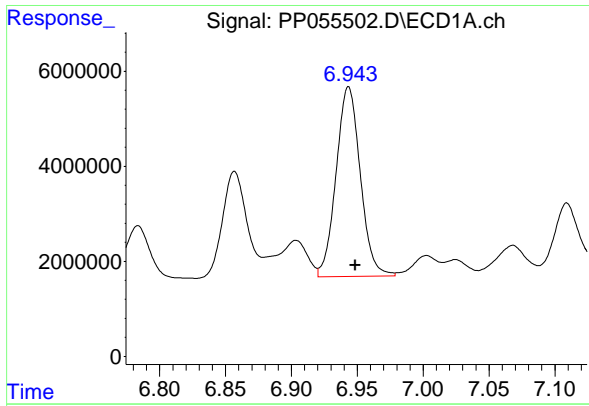
#27 AR-1254-2

R.T.: 6.576 min  
 Delta R.T.: -0.006 min  
 Response: 49802965  
 Conc: 411.52 ng/ml



#27 AR-1254-2

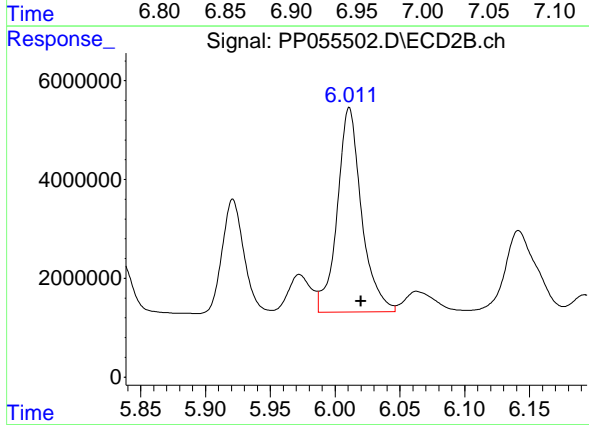
R.T.: 5.607 min  
 Delta R.T.: -0.009 min  
 Response: 34224475  
 Conc: 478.25 ng/ml



#28 AR-1254-3

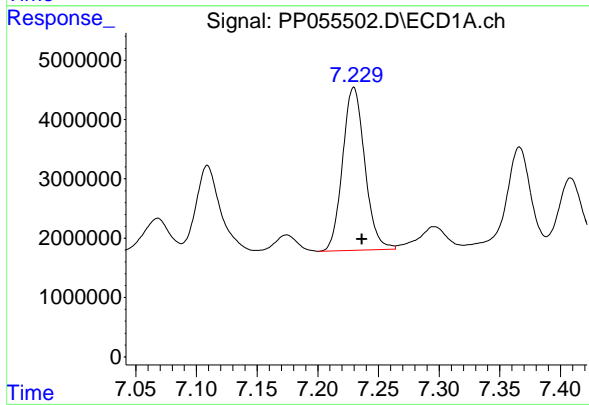
R.T.: 6.943 min  
 Delta R.T.: -0.005 min  
 Response: 50921166  
 Conc: 415.72 ng/ml

Instrument :  
 ECD\_P  
 ClientSampleId :  
 AR1254CCC500



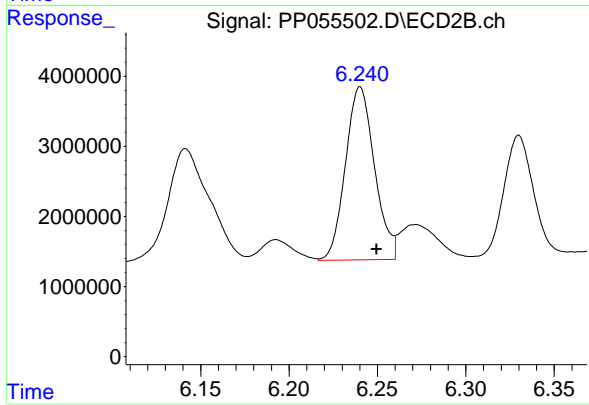
#28 AR-1254-3

R.T.: 6.011 min  
 Delta R.T.: -0.009 min  
 Response: 54044629  
 Conc: 485.11 ng/ml



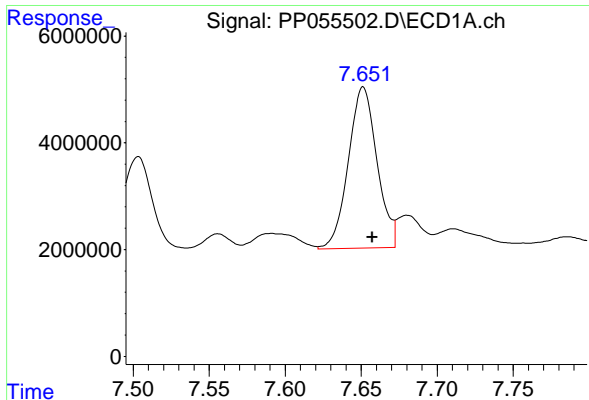
#29 AR-1254-4

R.T.: 7.230 min  
 Delta R.T.: -0.007 min  
 Response: 34984750  
 Conc: 397.05 ng/ml



#29 AR-1254-4

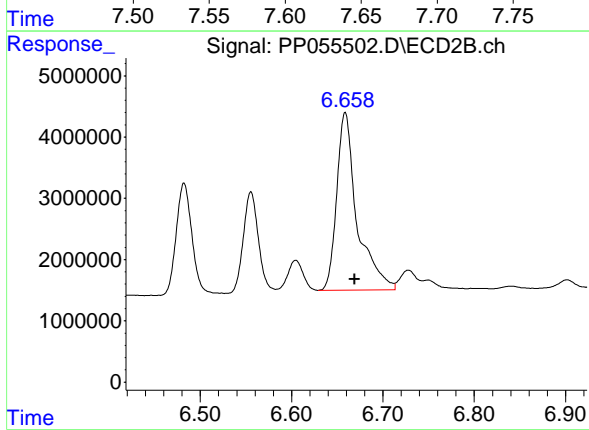
R.T.: 6.240 min  
 Delta R.T.: -0.009 min  
 Response: 28282225  
 Conc: 459.82 ng/ml



#30 AR-1254-5

R.T.: 7.651 min  
 Delta R.T.: -0.006 min  
 Response: 39602043  
 Conc: 391.48 ng/ml

Instrument :  
 ECD\_P  
 ClientSampleId :  
 AR1254CCC500



#30 AR-1254-5

R.T.: 6.659 min  
 Delta R.T.: -0.010 min  
 Response: 44752798  
 Conc: 472.06 ng/ml