

Data Path : Z:\pestpcbsrv\HPCHEM1\ECD_P\Data\PP021021\
 Data File : PP033220.D
 Signal(s) : Signal #1: ECD1A.CH Signal #2: ECD2B.CH
 Acq On : 10 Feb 2021 13:53
 Operator : DD\AJ
 Sample : AR1262CCC500
 Misc :
 ALS Vial : 6 Sample Multiplier: 1

Instrument :
 ECD_P
 ClientSampled :
 AR1262CCC500

Integration File signal 1: autoint1.e
 Integration File signal 2: autoint2.e
 Quant Time: Feb 10 13:57:40 2021
 Quant Method : Z:\pestpcbsrv\HPCHEM1\ECD_P\methods\PP020821.M
 Quant Title : GC EXTRACTABLES
 QLast Update : Tue Feb 09 04:00:57 2021
 Response via : Initial Calibration
 Integrator: ChemStation 6890 Scale Mode: Small noise peaks clipped

Volume Inj. : 2 µl
 Signal #1 Phase : ZB-MR1 Signal #2 Phase: ZB-MR2
 Signal #1 Info : 30Mx0.32mmx 0.50µ Signal #2 Info : 30M x 0.32mm x 0.25µm

| Compound | RT#1 | RT#2 | Resp#1 | Resp#2 | ng/ml | ng/ml |
|-----------------------------|--------|-------|---------|---------|---------|-----------|
| ----- | | | | | | |
| System Monitoring Compounds | | | | | | |
| 1) SA Tetrachlo... | 4.729 | 4.002 | 3238756 | 2224656 | 52.815 | 54.403 |
| 2) SA Decachlor... | 10.547 | 9.264 | 2461092 | 1942625 | 56.498 | 57.989 |
| Target Compounds | | | | | | |
| 3) L1 AR-1016-1 | 6.026 | 5.247 | 23893 | 15742 | 14.577 | 14.343 |
| 4) L1 AR-1016-2 | 6.049 | 5.266 | 32183 | 26544 | 12.852 | 16.265 # |
| 5) L1 AR-1016-3 | 6.115 | 0.000 | 22159 | 0 | 13.973 | N.D. # |
| 6) L1 AR-1016-4 | 0.000 | 5.507 | 0 | 20500 | N.D. | 28.467 # |
| 7) L1 AR-1016-5 | 6.532 | 0.000 | 31513 | 0 | 24.027 | N.D. # |
| 9) L2 AR-1221-2 | 5.073 | 4.353 | 44913 | 28094 | 96.545 | 88.902 |
| 12) L3 AR-1232-2 | 5.736 | 5.266 | 22663 | 26544 | 35.497 | 35.904 |
| 13) L3 AR-1232-3 | 6.049 | 0.000 | 32183 | 0 | 29.336 | N.D. # |
| 15) L3 AR-1232-5 | 6.320 | 0.000 | 31056 | 0 | 84.987 | N.D. # |
| 16) L4 AR-1242-1 | 6.026 | 5.247 | 23893 | 15742 | 18.380 | 18.188 |
| 17) L4 AR-1242-2 | 6.049 | 5.266 | 32183 | 26544 | 16.334 | 20.683 # |
| 18) L4 AR-1242-3 | 6.115 | 0.000 | 22159 | 0 | 17.484 | N.D. # |
| 20) L4 AR-1242-5 | 6.999 | 6.112 | 47002 | 129548 | 45.240 | 153.426 # |
| 21) L5 AR-1248-1 | 6.026 | 5.247 | 23893 | 15742 | 24.954 | 24.206 |
| 22) L5 AR-1248-2 | 6.320 | 5.507 | 31056 | 20500 | 23.437 | 21.368 |
| 23) L5 AR-1248-3 | 6.532 | 0.000 | 31513 | 0 | 19.461 | N.D. # |
| 24) L5 AR-1248-4 | 6.957 | 0.000 | 44724 | 0 | 25.992 | N.D. # |
| 25) L5 AR-1248-5 | 6.999 | 0.000 | 47002 | 0 | 27.013 | N.D. # |
| 26) L6 AR-1254-1 | 6.931 | 6.112 | 123260 | 129548 | 65.650 | 67.786 |
| 27) L6 AR-1254-2 | 7.156 | 6.271 | 102882 | 142056 | 35.092 | 86.639 # |
| 28) L6 AR-1254-3 | 7.537 | 6.707 | 166218 | 548675 | 54.726 | 204.144 # |
| 29) L6 AR-1254-4 | 7.827 | 6.929 | 192398 | 39409 | 83.171 | 26.394 # |
| 30) L6 AR-1254-5 | 8.253 | 7.354 | 1097398 | 677352 | 453.511 | 279.738 # |
| 31) L7 AR-1260-1 | 7.701 | 6.825 | 1016787 | 751730 | 464.426 | 438.269 |
| 32) L7 AR-1260-2 | 7.966 | 7.022 | 1260205 | 901318 | 431.186 | 446.062 |
| 33) L7 AR-1260-3 | 8.330 | 7.176 | 1870550 | 889908 | 730.859 | 448.585 # |
| 34) L7 AR-1260-4 | 8.559 | 7.655 | 1460311 | 1142792 | 597.739 | 679.304 |
| 35) L7 AR-1260-5 | 8.871 | 7.905 | 3169170 | 2284068 | 588.740 | 593.615 |
| 36) L8 AR-1262-1 | 8.330 | 7.354 | 1870550 | 677352 | 492.029 | 543.863 |
| 37) L8 AR-1262-2 | 8.871 | 7.905 | 3169170 | 2284068 | 506.184 | 519.394 |
| 38) L8 AR-1262-3 | 9.164 | 8.188 | 2033749 | 938361 | 496.106 | 498.131 |
| 39) L8 AR-1262-4 | 9.250 | 8.253 | -22779 | 1756253 | N.D. | 514.780 # |
| 40) L8 AR-1262-5 | 9.864 | 8.750 | 1122972 | 838078 | 545.636 | 543.783 |
| 41) L9 AR-1268-1 | 9.164 | 8.188 | 2033749 | 938361 | 270.026 | 181.374 # |
| 42) L9 AR-1268-2 | 9.250 | 8.253 | -22779 | 1756253 | N.D. | 357.067 # |
| 43) L9 AR-1268-3 | 9.462 | 8.456 | 104264 | 72228 | 16.988 | 16.523 |
| 44) L9 AR-1268-4 | 9.864 | 8.750 | 1122972 | 838078 | 517.333 | 504.382 |
| 45) L9 AR-1268-5 | 10.243 | 9.027 | 411197 | 332188 | 25.118 | 25.983 |

Data Path : Z:\pestpcbsrv\HPCHEM1\ECD_P\Data\PP021021\
Data File : PP033220.D
Signal(s) : Signal #1: ECD1A.CH Signal #2: ECD2B.CH
Acq On : 10 Feb 2021 13:53
Operator : DD\AJ
Sample : AR1262CCC500
Misc :
ALS Vial : 6 Sample Multiplier: 1

Instrument :
ECD_P
ClientSampleId :
AR1262CCC500

Integration File signal 1: autoint1.e
Integration File signal 2: autoint2.e
Quant Time: Feb 10 13:57:40 2021
Quant Method : Z:\pestpcbsrv\HPCHEM1\ECD_P\methods\PP020821.M
Quant Title : GC EXTRACTABLES
QLast Update : Tue Feb 09 04:00:57 2021
Response via : Initial Calibration
Integrator: ChemStation 6890 Scale Mode: Small noise peaks clipped

Volume Inj. : 2 µl
Signal #1 Phase : ZB-MR1 Signal #2 Phase: ZB-MR2
Signal #1 Info : 30Mx0.32mmx 0.50µ Signal #2 Info : 30M x 0.32mm x 0.25µm

| Compound | RT#1 | RT#2 | Resp#1 | Resp#2 | ng/ml | ng/ml |
|----------|------|------|--------|--------|-------|-------|
|----------|------|------|--------|--------|-------|-------|

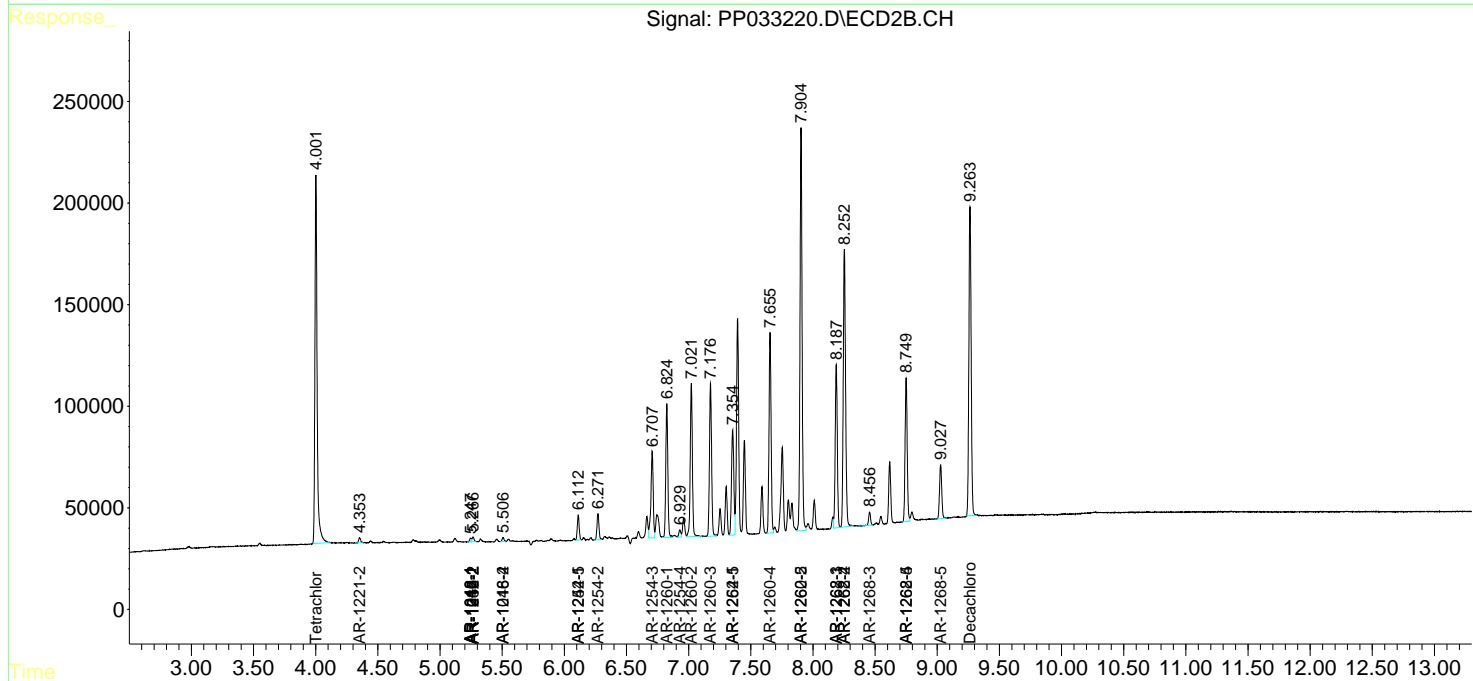
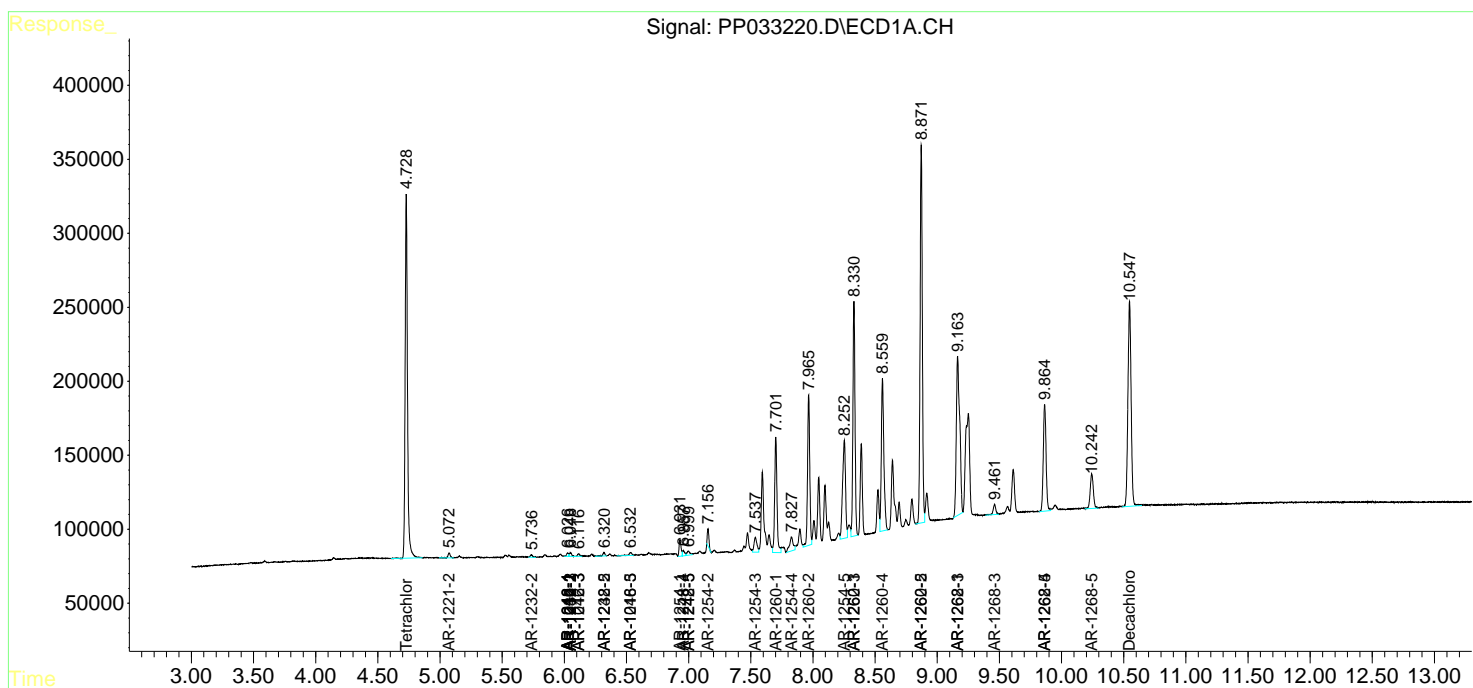
(f)=RT Delta > 1/2 Window (#)=Amounts differ by > 25% (m)=manual int.

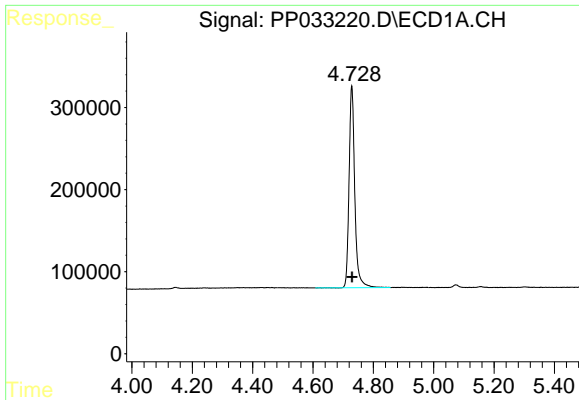
Data Path : Z:\pestpcbsrv\HPCHEM1\ECD_P\Data\PP021021\
 Data File : PP033220.D
 Signal(s) : Signal #1: ECD1A.CH Signal #2: ECD2B.CH
 Acq On : 10 Feb 2021 13:53
 Operator : DD\AJ
 Sample : AR1262CCC500
 Misc :
 ALS Vial : 6 Sample Multiplier: 1

Instrument :
 ECD_P
 ClientSampled :
 AR1262CCC500

Integration File signal 1: autoint1.e
 Integration File signal 2: autoint2.e
 Quant Time: Feb 10 13:57:40 2021
 Quant Method : Z:\pestpcbsrv\HPCHEM1\ECD_P\methods\PP020821.M
 Quant Title : GC EXTRACTABLES
 QLast Update : Tue Feb 09 04:00:57 2021
 Response via : Initial Calibration
 Integrator: ChemStation 6890 Scale Mode: Small noise peaks clipped

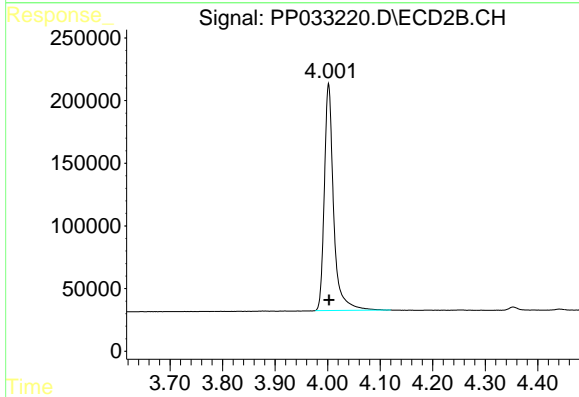
Volume Inj. : 2 µl
 Signal #1 Phase : ZB-MR1 Signal #2 Phase: ZB-MR2
 Signal #1 Info : 30Mx0.32mmx 0.50µ Signal #2 Info : 30M x 0.32mm x 0.25µm



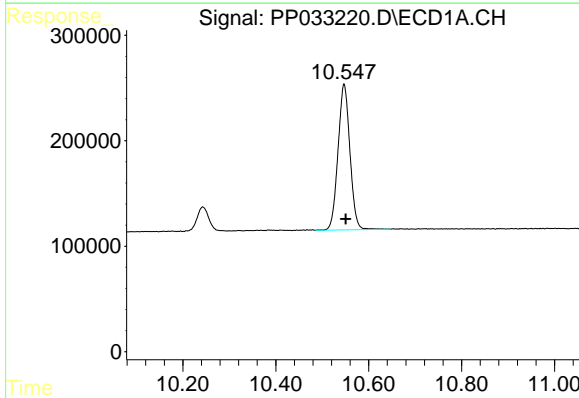


#1 Tetrachloro-m-xylene
 R.T.: 4.729 min
 Delta R.T.: -0.001 min
 Response: 3238756
 Conc: 52.82 ng/ml

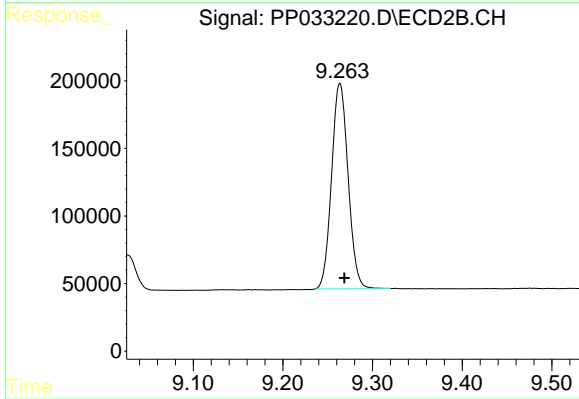
Instrument :
 ECD_P
 ClientSampleId :
 AR1262CCC500



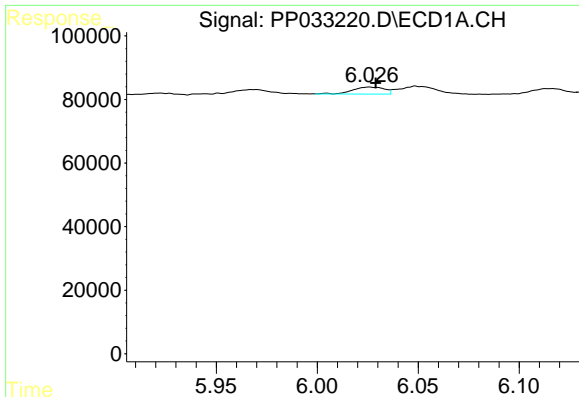
#1 Tetrachloro-m-xylene
 R.T.: 4.002 min
 Delta R.T.: -0.001 min
 Response: 2224656
 Conc: 54.40 ng/ml



#2 Decachlorobiphenyl
 R.T.: 10.547 min
 Delta R.T.: -0.004 min
 Response: 2461092
 Conc: 56.50 ng/ml



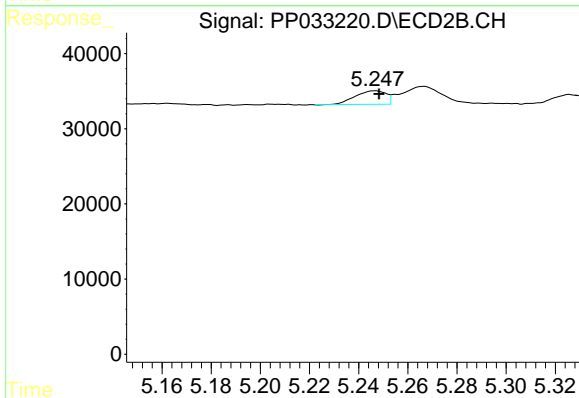
#2 Decachlorobiphenyl
 R.T.: 9.264 min
 Delta R.T.: -0.005 min
 Response: 1942625
 Conc: 57.99 ng/ml



#3 AR-1016-1

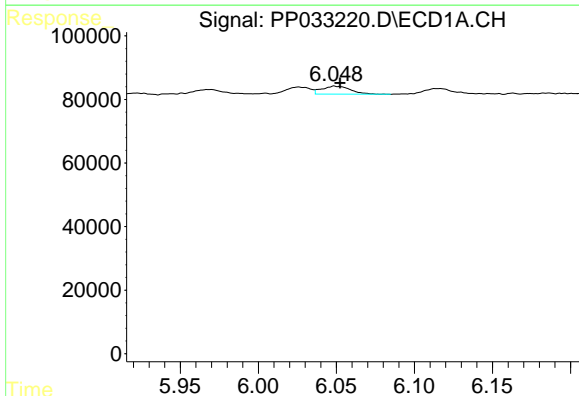
R.T.: 6.026 min
 Delta R.T.: -0.003 min
 Response: 23893
 Conc: 14.58 ng/ml

Instrument :
 ECD_P
 ClientSampleId :
 AR1262CCC500



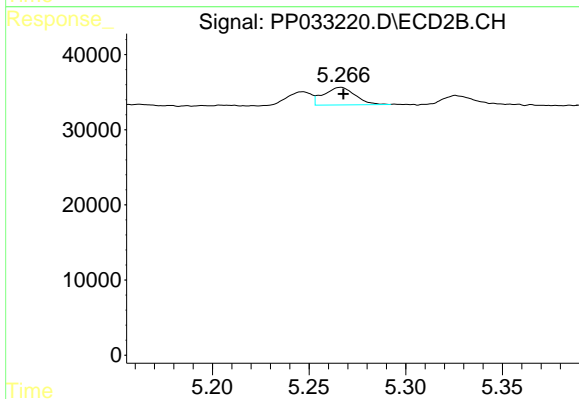
#3 AR-1016-1

R.T.: 5.247 min
 Delta R.T.: -0.002 min
 Response: 15742
 Conc: 14.34 ng/ml



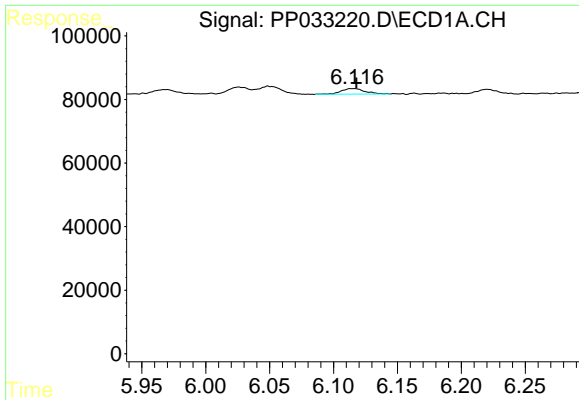
#4 AR-1016-2

R.T.: 6.049 min
 Delta R.T.: -0.003 min
 Response: 32183
 Conc: 12.85 ng/ml



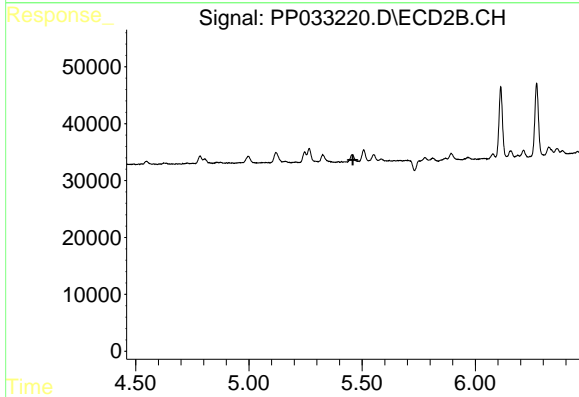
#4 AR-1016-2

R.T.: 5.266 min
 Delta R.T.: -0.001 min
 Response: 26544
 Conc: 16.27 ng/ml

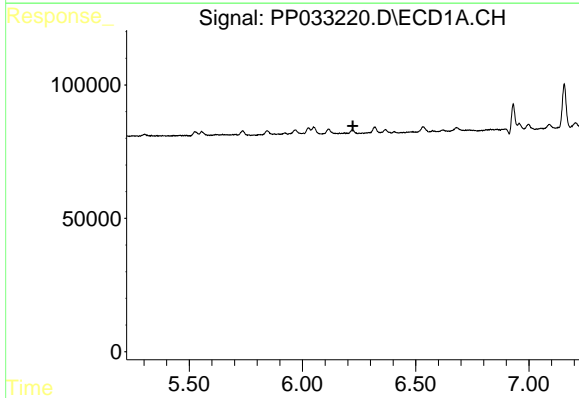


#5 AR-1016-3
 R.T.: 6.115 min
 Delta R.T.: -0.003 min
 Response: 22159
 Conc: 13.97 ng/ml

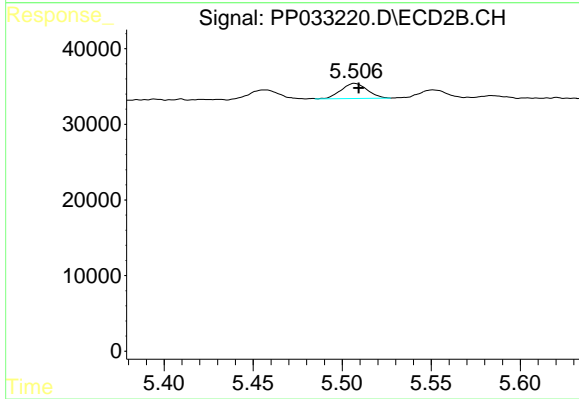
Instrument :
 ECD_P
 ClientSampleId :
 AR1262CCC500



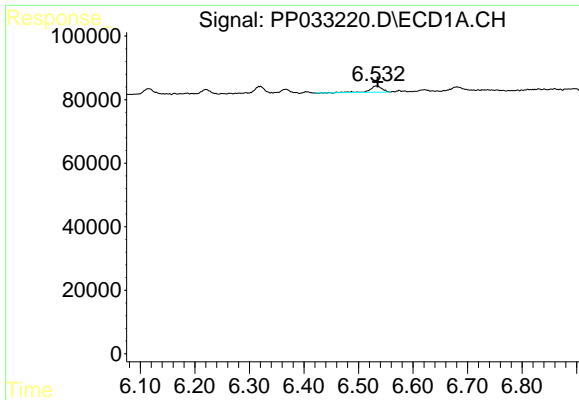
#5 AR-1016-3
 R.T.: 0.000 min
 Exp R.T. : 5.459 min
 Response: 0
 Conc: N.D.



#6 AR-1016-4
 R.T.: 0.000 min
 Exp R.T. : 6.222 min
 Response: 0
 Conc: N.D.



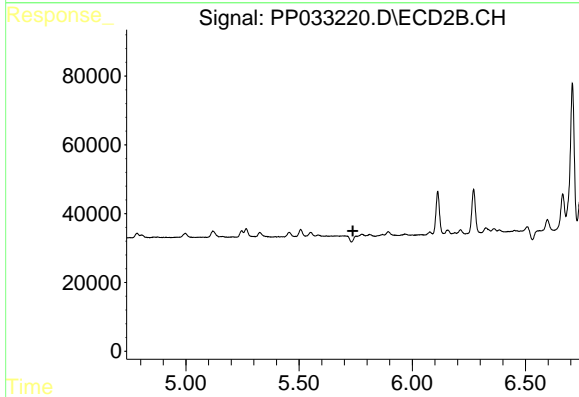
#6 AR-1016-4
 R.T.: 5.507 min
 Delta R.T.: -0.002 min
 Response: 20500
 Conc: 28.47 ng/ml



#7 AR-1016-5

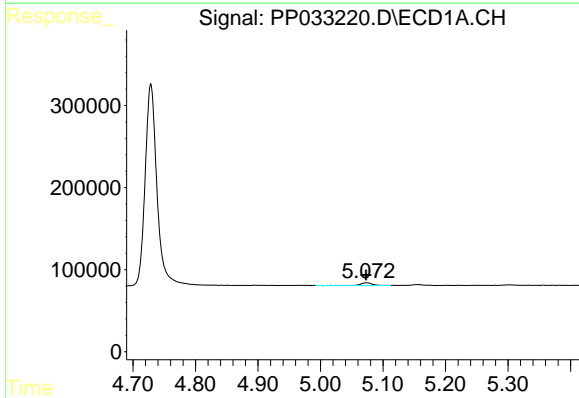
R.T.: 6.532 min
 Delta R.T.: -0.003 min
 Response: 31513
 Conc: 24.03 ng/ml

Instrument :
 ECD_P
ClientSampleId :
 AR1262CCC500



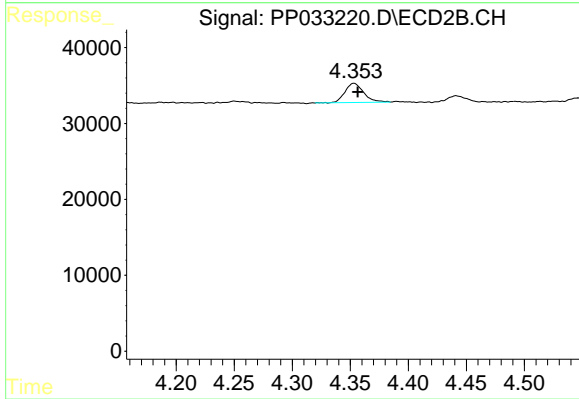
#7 AR-1016-5

R.T.: 0.000 min
 Exp R.T. : 5.738 min
 Response: 0
 Conc: N.D.



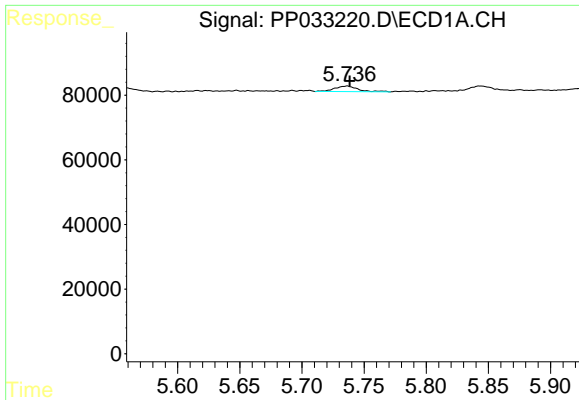
#9 AR-1221-2

R.T.: 5.073 min
 Delta R.T.: 0.000 min
 Response: 44913
 Conc: 96.55 ng/ml



#9 AR-1221-2

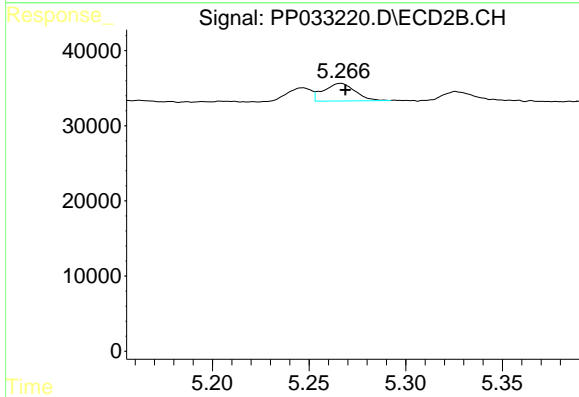
R.T.: 4.353 min
 Delta R.T.: -0.003 min
 Response: 28094
 Conc: 88.90 ng/ml



#12 AR-1232-2

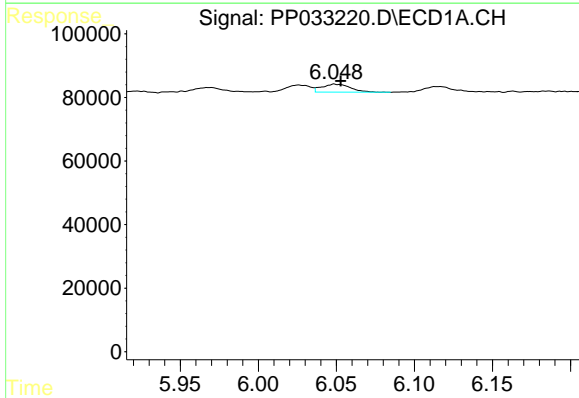
R.T.: 5.736 min
 Delta R.T.: -0.002 min
 Response: 22663
 Conc: 35.50 ng/ml

Instrument :
 ECD_P
ClientSampleId :
 AR1262CCC500



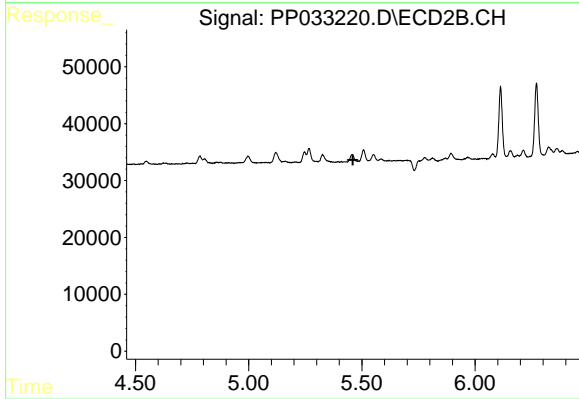
#12 AR-1232-2

R.T.: 5.266 min
 Delta R.T.: -0.002 min
 Response: 26544
 Conc: 35.90 ng/ml



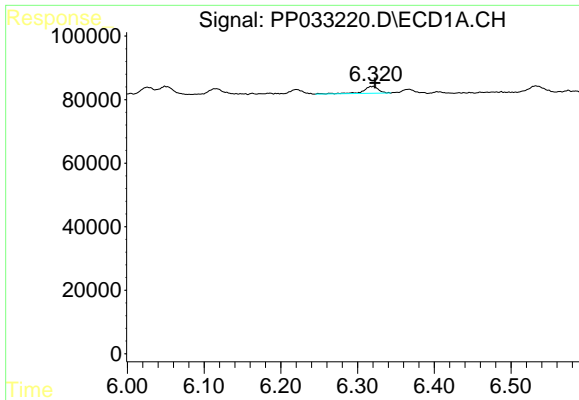
#13 AR-1232-3

R.T.: 6.049 min
 Delta R.T.: -0.004 min
 Response: 32183
 Conc: 29.34 ng/ml



#13 AR-1232-3

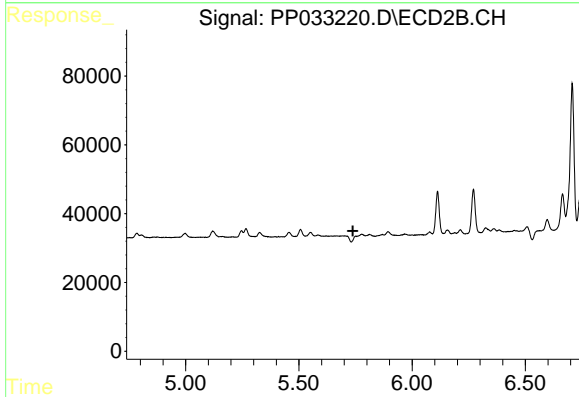
R.T.: 0.000 min
 Exp R.T. : 5.460 min
 Response: 0
 Conc: N.D.



#15 AR-1232-5

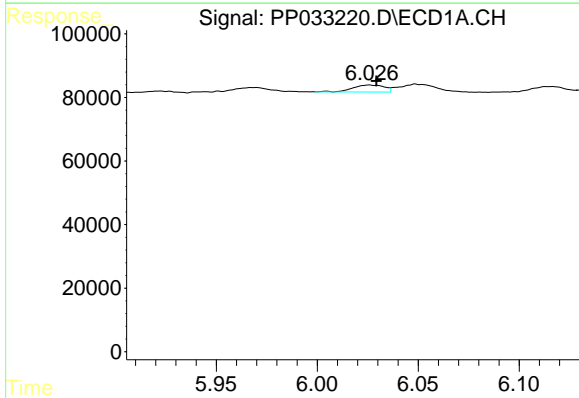
R.T.: 6.320 min
 Delta R.T.: -0.003 min
 Response: 31056
 Conc: 84.99 ng/ml

Instrument :
 ECD_P
 ClientSampleId :
 AR1262CCC500



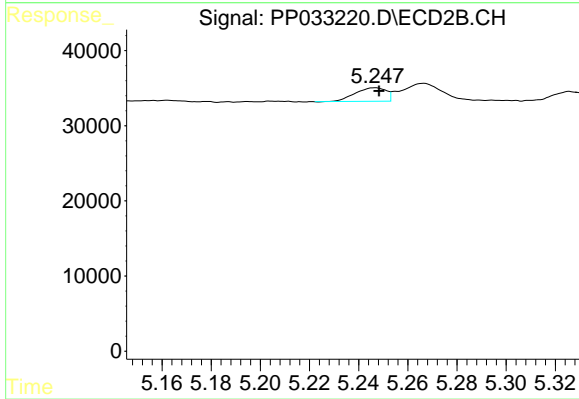
#15 AR-1232-5

R.T.: 0.000 min
 Exp R.T. : 5.738 min
 Response: 0
 Conc: N.D.



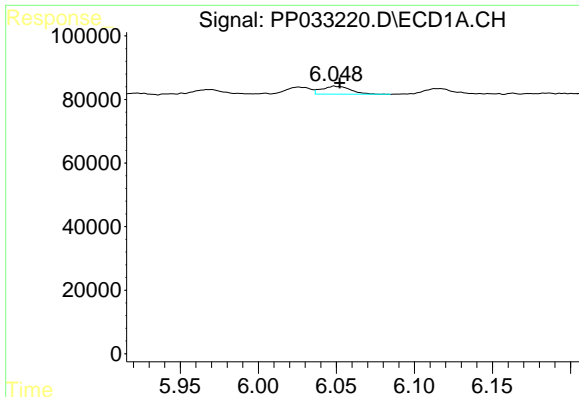
#16 AR-1242-1

R.T.: 6.026 min
 Delta R.T.: -0.003 min
 Response: 23893
 Conc: 18.38 ng/ml



#16 AR-1242-1

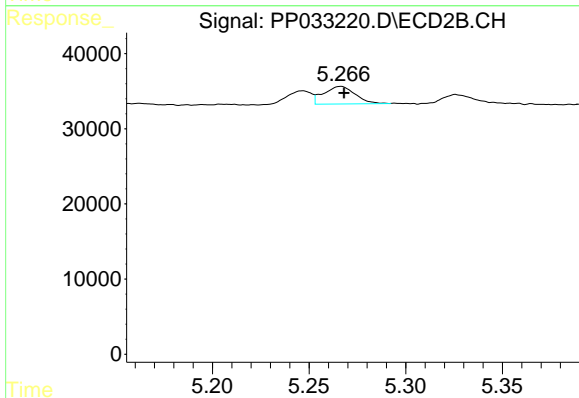
R.T.: 5.247 min
 Delta R.T.: -0.002 min
 Response: 15742
 Conc: 18.19 ng/ml



#17 AR-1242-2

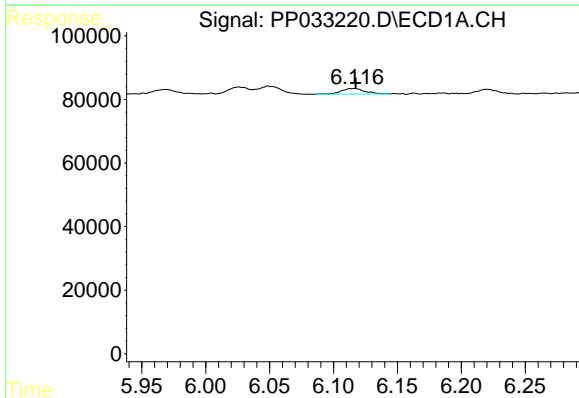
R.T.: 6.049 min
 Delta R.T.: -0.003 min
 Response: 32183
 Conc: 16.33 ng/ml

Instrument :
 ECD_P
 ClientSampleId :
 AR1262CCC500



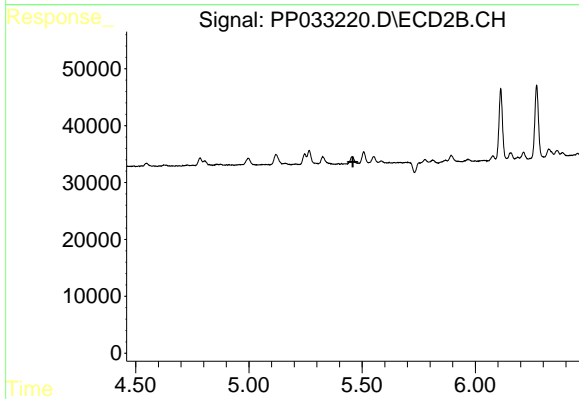
#17 AR-1242-2

R.T.: 5.266 min
 Delta R.T.: -0.002 min
 Response: 26544
 Conc: 20.68 ng/ml



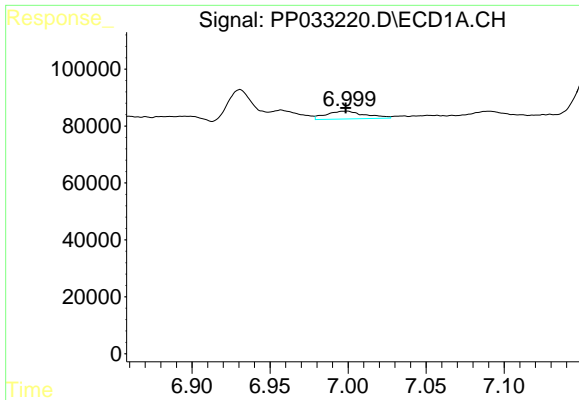
#18 AR-1242-3

R.T.: 6.115 min
 Delta R.T.: -0.002 min
 Response: 22159
 Conc: 17.48 ng/ml



#18 AR-1242-3

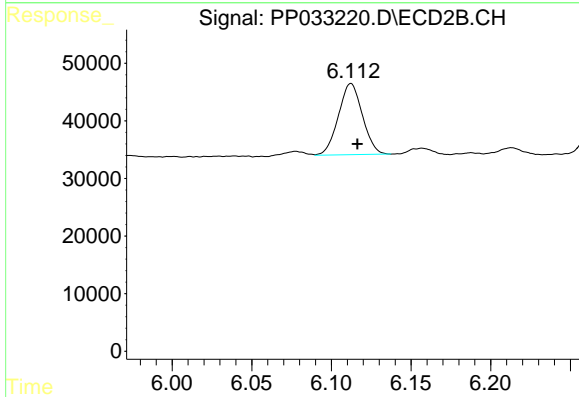
R.T.: 0.000 min
 Exp R.T. : 5.459 min
 Response: 0
 Conc: N.D.



#20 AR-1242-5

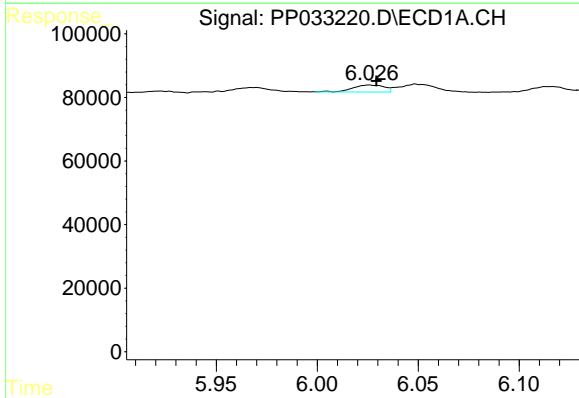
R.T.: 6.999 min
 Delta R.T.: 0.000 min
 Response: 47002
 Conc: 45.24 ng/ml

Instrument :
 ECD_P
ClientSampleId :
 AR1262CCC500



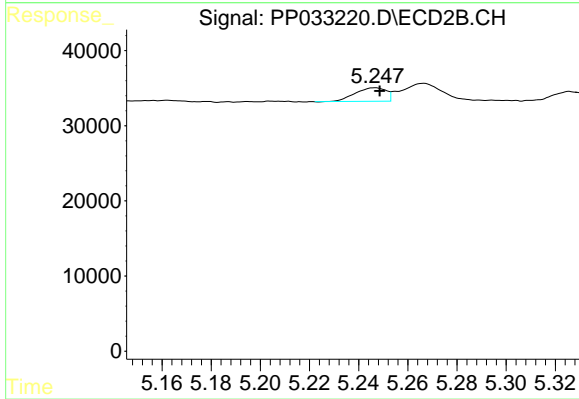
#20 AR-1242-5

R.T.: 6.112 min
 Delta R.T.: -0.004 min
 Response: 129548
 Conc: 153.43 ng/ml



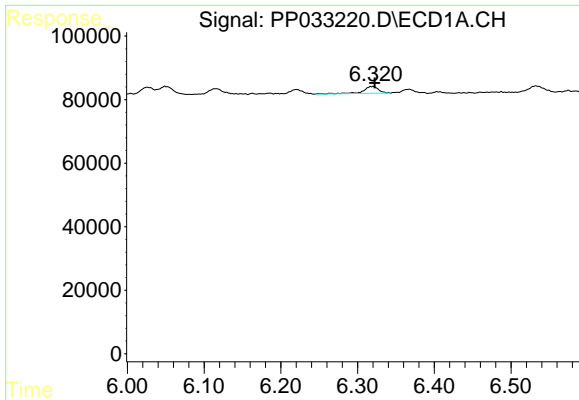
#21 AR-1248-1

R.T.: 6.026 min
 Delta R.T.: -0.003 min
 Response: 23893
 Conc: 24.95 ng/ml



#21 AR-1248-1

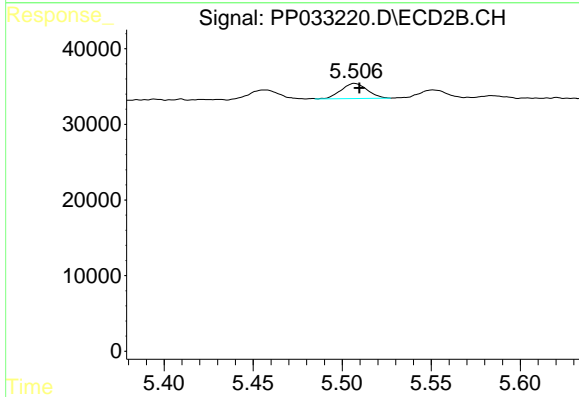
R.T.: 5.247 min
 Delta R.T.: -0.002 min
 Response: 15742
 Conc: 24.21 ng/ml



#22 AR-1248-2

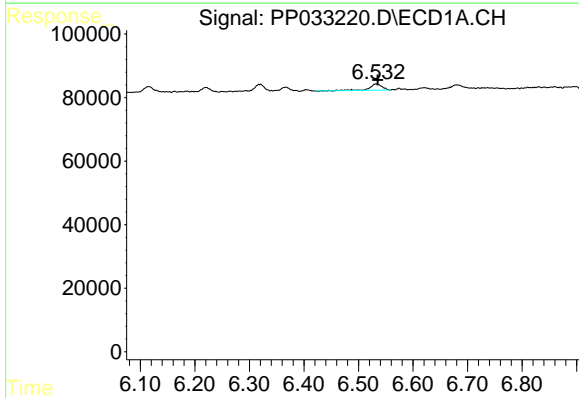
R.T.: 6.320 min
 Delta R.T.: -0.002 min
 Response: 31056
 Conc: 23.44 ng/ml

Instrument :
 ECD_P
ClientSampleId :
 AR1262CCC500



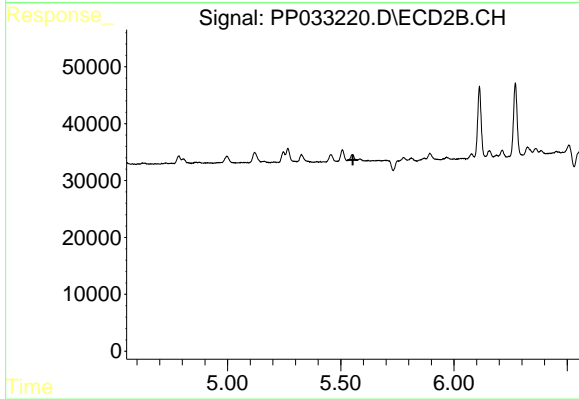
#22 AR-1248-2

R.T.: 5.507 min
 Delta R.T.: -0.003 min
 Response: 20500
 Conc: 21.37 ng/ml



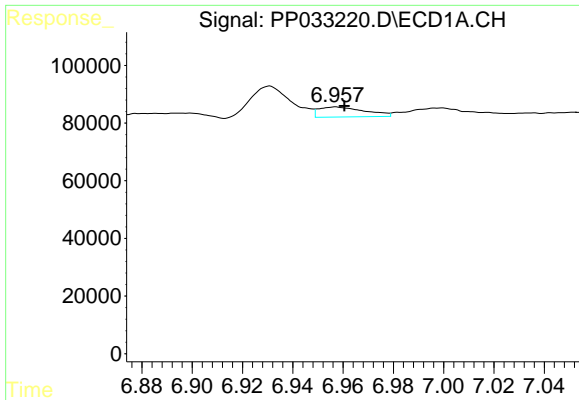
#23 AR-1248-3

R.T.: 6.532 min
 Delta R.T.: -0.003 min
 Response: 31513
 Conc: 19.46 ng/ml



#23 AR-1248-3

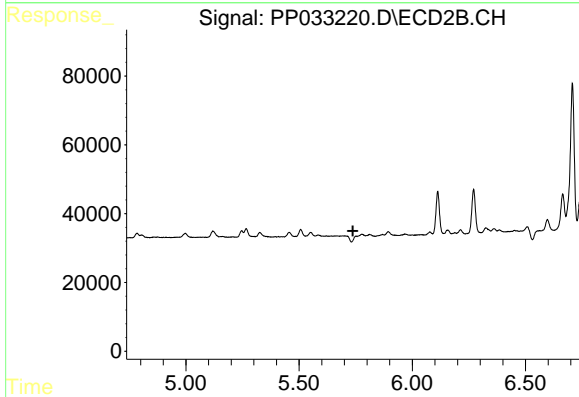
R.T.: 0.000 min
 Exp R.T. : 5.553 min
 Response: 0
 Conc: N.D.



#24 AR-1248-4

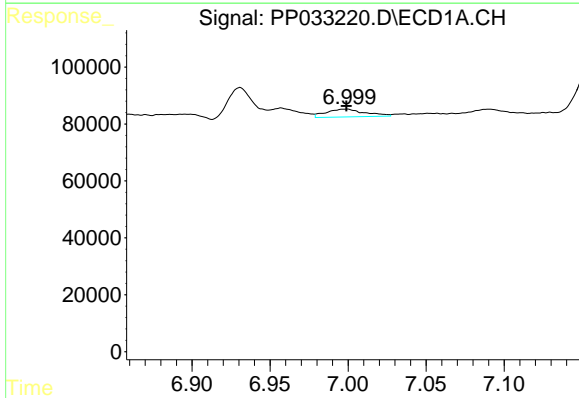
R.T.: 6.957 min
 Delta R.T.: -0.004 min
 Response: 44724
 Conc: 25.99 ng/ml

Instrument :
 ECD_P
ClientSampled :
 AR1262CCC500



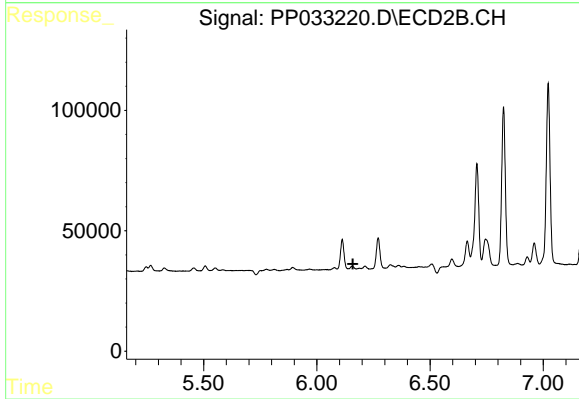
#24 AR-1248-4

R.T.: 0.000 min
 Exp R.T. : 5.738 min
 Response: 0
 Conc: N.D.



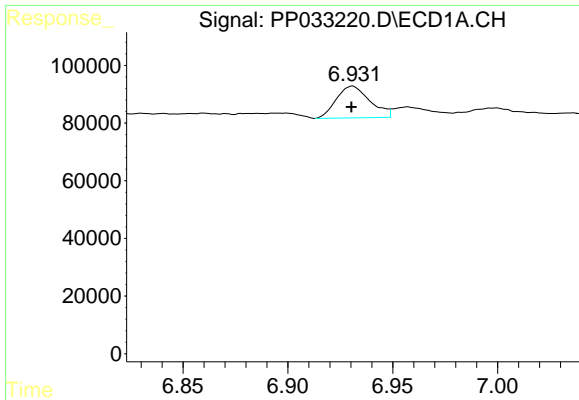
#25 AR-1248-5

R.T.: 6.999 min
 Delta R.T.: 0.000 min
 Response: 47002
 Conc: 27.01 ng/ml



#25 AR-1248-5

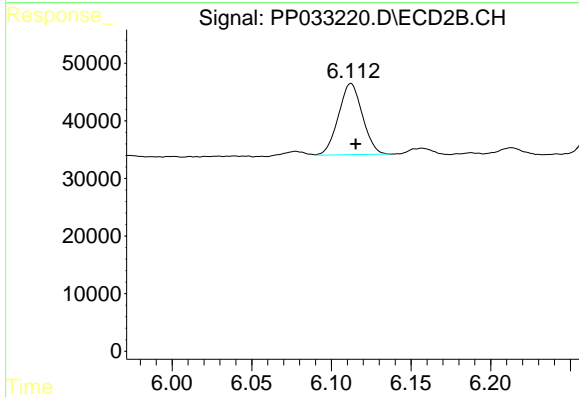
R.T.: 0.000 min
 Exp R.T. : 6.160 min
 Response: 0
 Conc: N.D.



#26 AR-1254-1

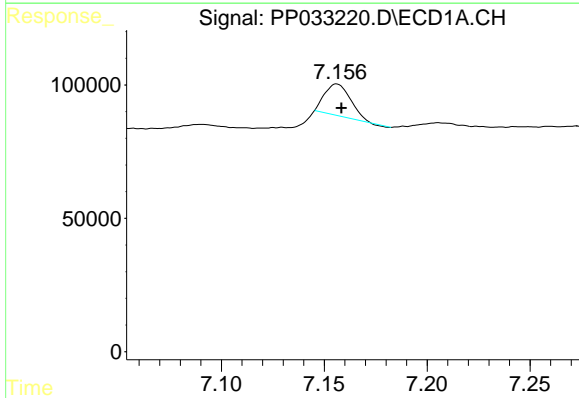
R.T.: 6.931 min
 Delta R.T.: 0.000 min
 Response: 123260
 Conc: 65.65 ng/ml

Instrument :
 ECD_P
ClientSampleId :
 AR1262CCC500



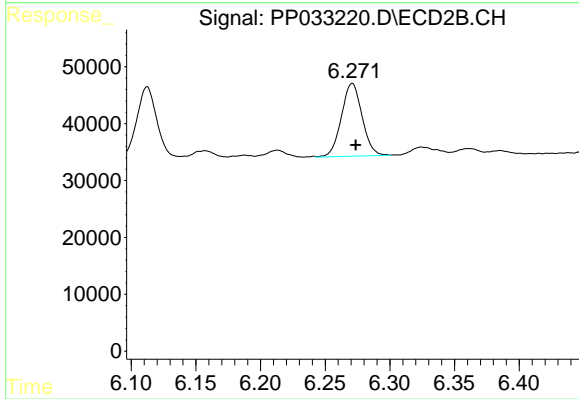
#26 AR-1254-1

R.T.: 6.112 min
 Delta R.T.: -0.003 min
 Response: 129548
 Conc: 67.79 ng/ml



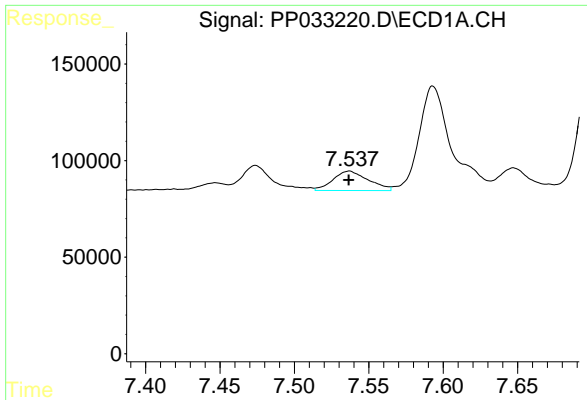
#27 AR-1254-2

R.T.: 7.156 min
 Delta R.T.: -0.002 min
 Response: 102882
 Conc: 35.09 ng/ml



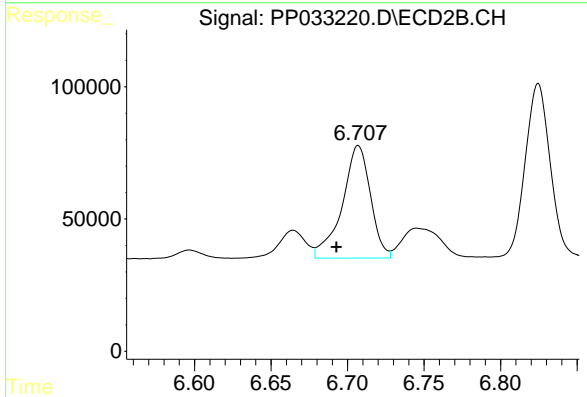
#27 AR-1254-2

R.T.: 6.271 min
 Delta R.T.: -0.003 min
 Response: 142056
 Conc: 86.64 ng/ml

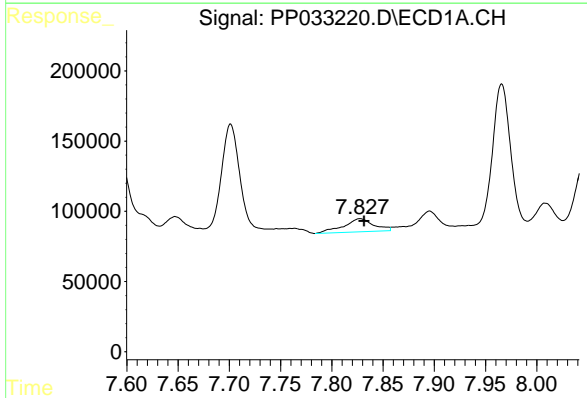


#28 AR-1254-3
 R.T.: 7.537 min
 Delta R.T.: 0.000 min
 Response: 166218
 Conc: 54.73 ng/ml

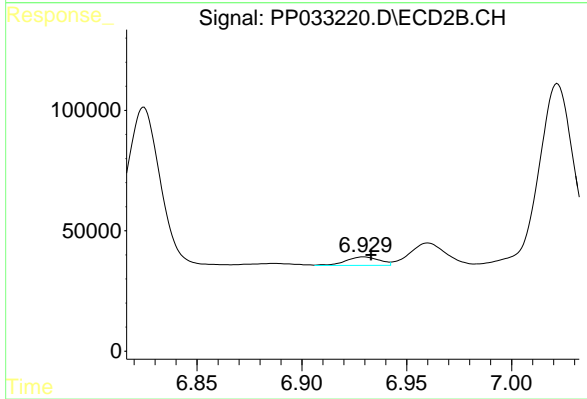
Instrument :
 ECD_P
 ClientSampleId :
 AR1262CCC500



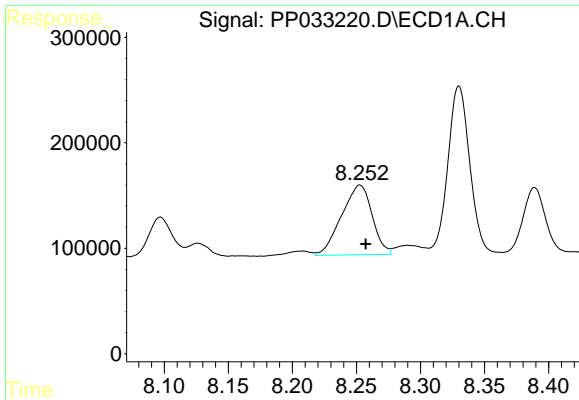
#28 AR-1254-3
 R.T.: 6.707 min
 Delta R.T.: 0.014 min
 Response: 548675
 Conc: 204.14 ng/ml



#29 AR-1254-4
 R.T.: 7.827 min
 Delta R.T.: -0.004 min
 Response: 192398
 Conc: 83.17 ng/ml



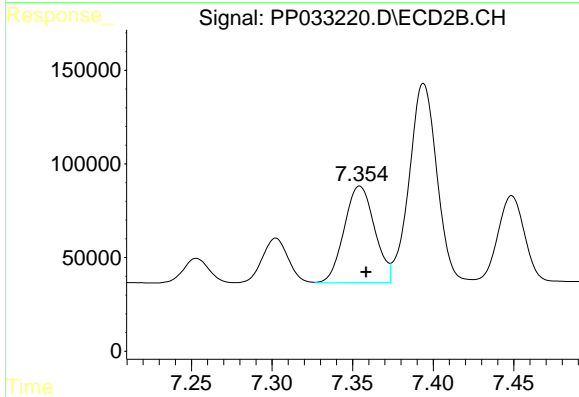
#29 AR-1254-4
 R.T.: 6.929 min
 Delta R.T.: -0.003 min
 Response: 39409
 Conc: 26.39 ng/ml



#30 AR-1254-5

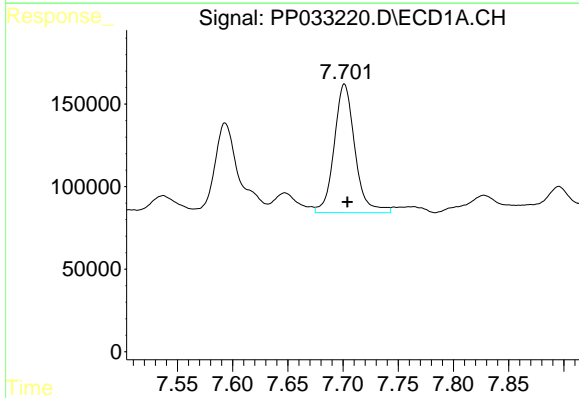
R.T.: 8.253 min
 Delta R.T.: -0.005 min
 Response: 1097398
 Conc: 453.51 ng/ml

Instrument :
 ECD_P
 ClientSampleId :
 AR1262CCC500



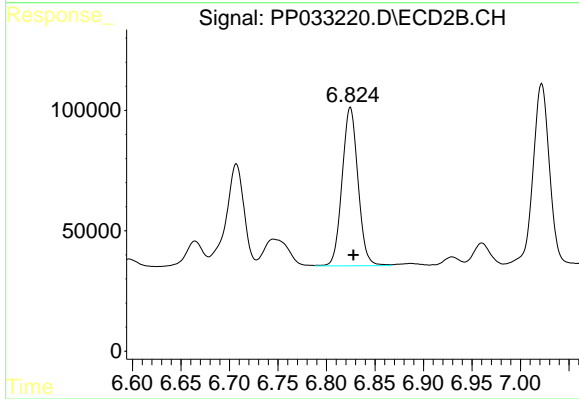
#30 AR-1254-5

R.T.: 7.354 min
 Delta R.T.: -0.004 min
 Response: 677352
 Conc: 279.74 ng/ml



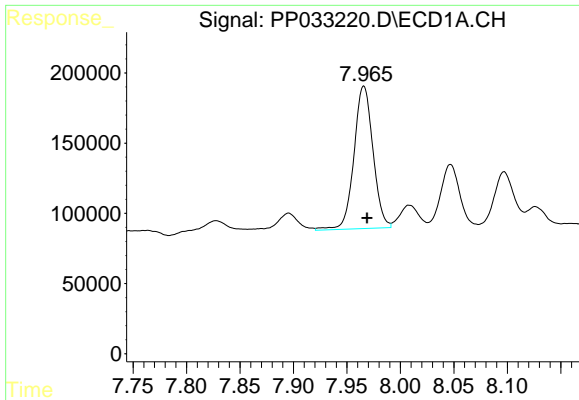
#31 AR-1260-1

R.T.: 7.701 min
 Delta R.T.: -0.003 min
 Response: 1016787
 Conc: 464.43 ng/ml



#31 AR-1260-1

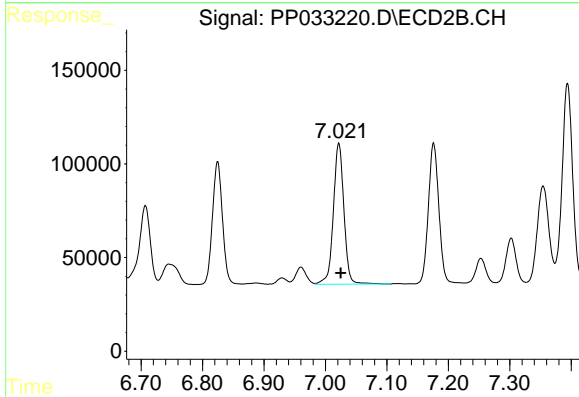
R.T.: 6.825 min
 Delta R.T.: -0.003 min
 Response: 751730
 Conc: 438.27 ng/ml



#32 AR-1260-2

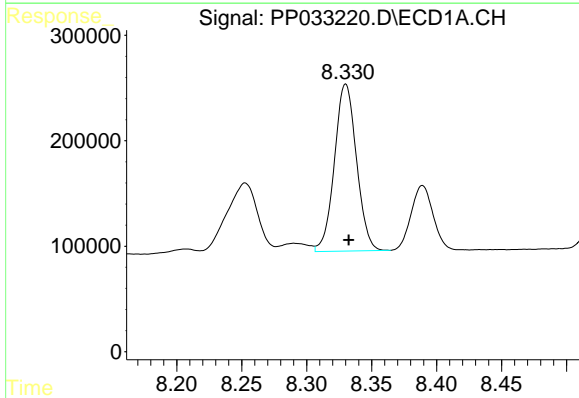
R.T.: 7.966 min
 Delta R.T.: -0.003 min
 Response: 1260205
 Conc: 431.19 ng/ml

Instrument :
 ECD_P
ClientSampleId :
 AR1262CCC500



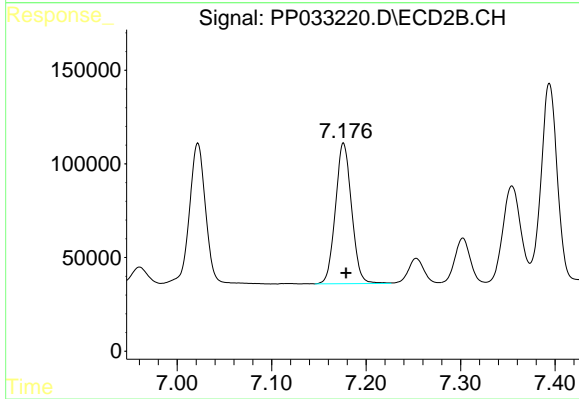
#32 AR-1260-2

R.T.: 7.022 min
 Delta R.T.: -0.004 min
 Response: 901318
 Conc: 446.06 ng/ml



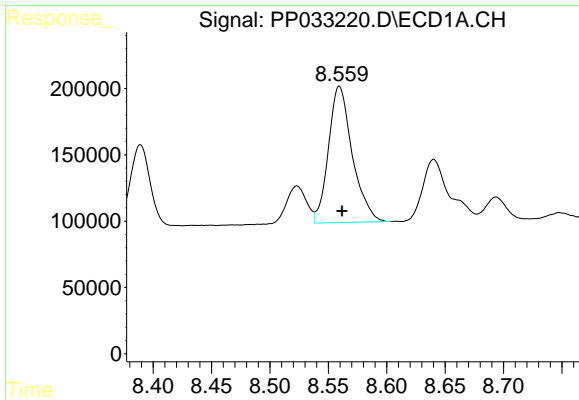
#33 AR-1260-3

R.T.: 8.330 min
 Delta R.T.: -0.002 min
 Response: 1870550
 Conc: 730.86 ng/ml



#33 AR-1260-3

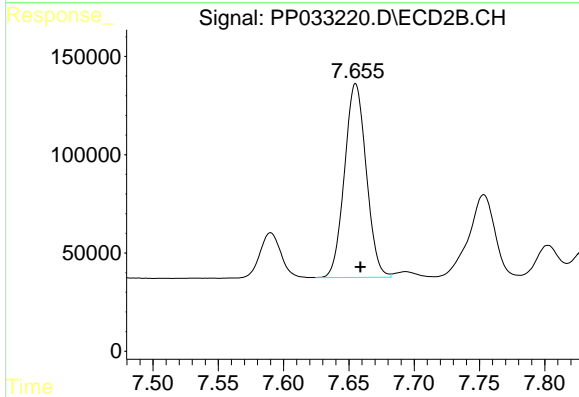
R.T.: 7.176 min
 Delta R.T.: -0.003 min
 Response: 889908
 Conc: 448.58 ng/ml



#34 AR-1260-4

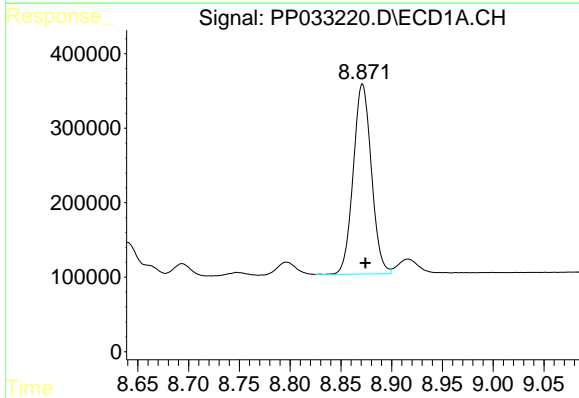
R.T.: 8.559 min
 Delta R.T.: -0.002 min
 Response: 1460311
 Conc: 597.74 ng/ml

Instrument :
 ECD_P
 ClientSampleId :
 AR1262CCC500



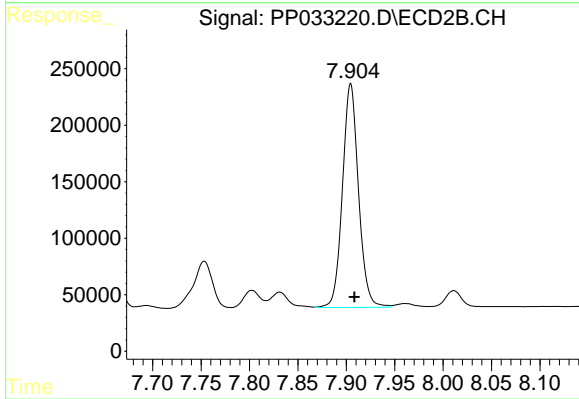
#34 AR-1260-4

R.T.: 7.655 min
 Delta R.T.: -0.004 min
 Response: 1142792
 Conc: 679.30 ng/ml



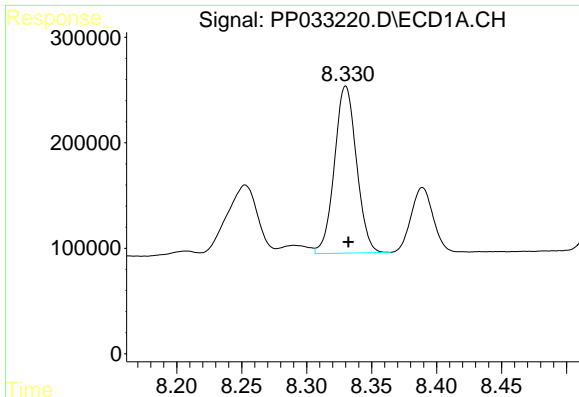
#35 AR-1260-5

R.T.: 8.871 min
 Delta R.T.: -0.003 min
 Response: 3169170
 Conc: 588.74 ng/ml



#35 AR-1260-5

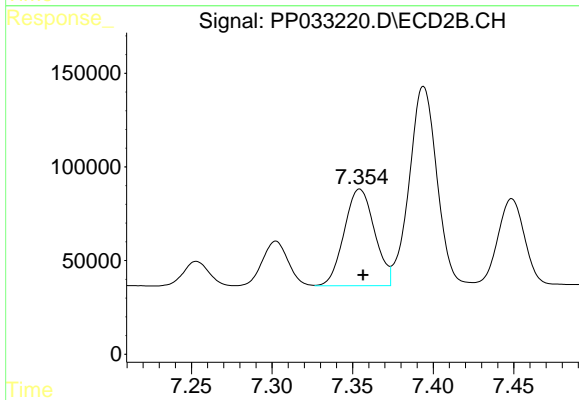
R.T.: 7.905 min
 Delta R.T.: -0.004 min
 Response: 2284068
 Conc: 593.62 ng/ml



#36 AR-1262-1

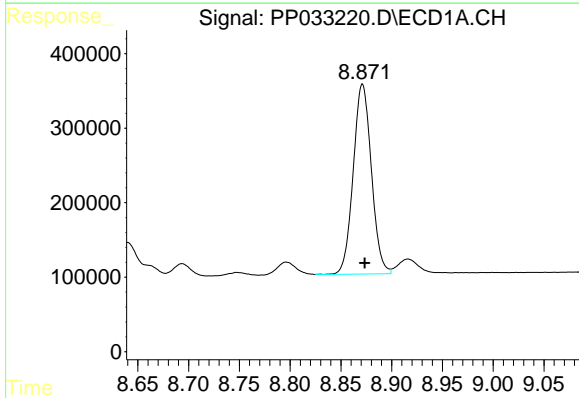
R.T.: 8.330 min
 Delta R.T.: -0.002 min
 Response: 1870550
 Conc: 492.03 ng/ml

Instrument :
 ECD_P
 ClientSampleId :
 AR1262CCC500



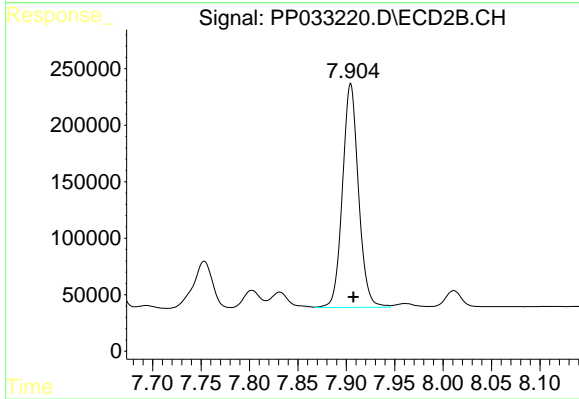
#36 AR-1262-1

R.T.: 7.354 min
 Delta R.T.: -0.002 min
 Response: 677352
 Conc: 543.86 ng/ml



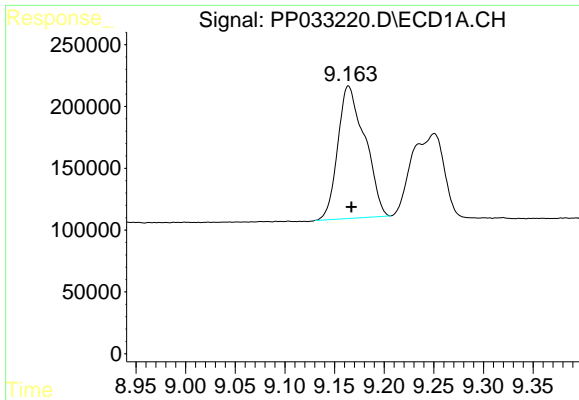
#37 AR-1262-2

R.T.: 8.871 min
 Delta R.T.: -0.002 min
 Response: 3169170
 Conc: 506.18 ng/ml



#37 AR-1262-2

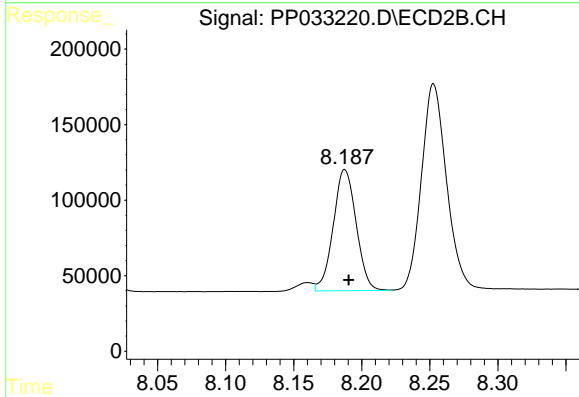
R.T.: 7.905 min
 Delta R.T.: -0.003 min
 Response: 2284068
 Conc: 519.39 ng/ml



#38 AR-1262-3

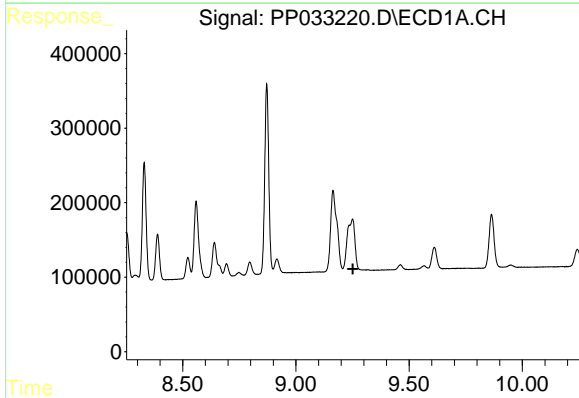
R.T.: 9.164 min
 Delta R.T.: -0.003 min
 Response: 2033749
 Conc: 496.11 ng/ml

Instrument :
 ECD_P
 ClientSampleId :
 AR1262CCC500



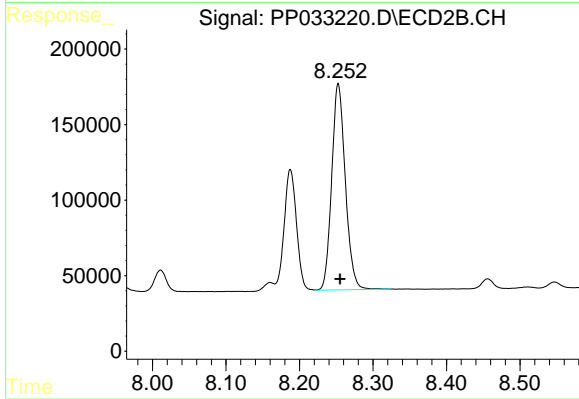
#38 AR-1262-3

R.T.: 8.188 min
 Delta R.T.: -0.003 min
 Response: 938361
 Conc: 498.13 ng/ml



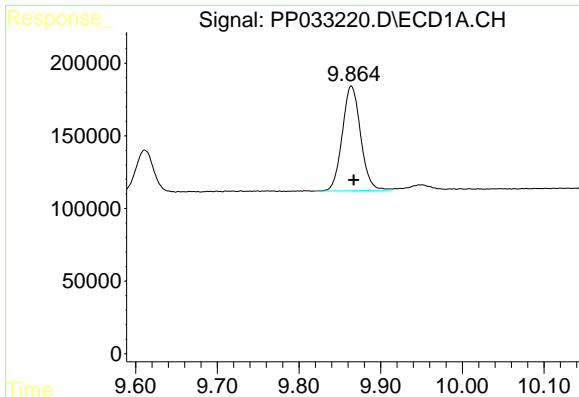
#39 AR-1262-4

R.T.: 9.250 min
 Delta R.T.: -0.001 min
 Response: -22779
 Conc: N.D.



#39 AR-1262-4

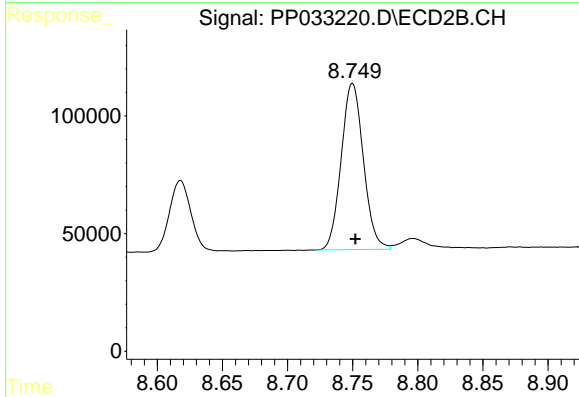
R.T.: 8.253 min
 Delta R.T.: -0.002 min
 Response: 1756253
 Conc: 514.78 ng/ml



#40 AR-1262-5

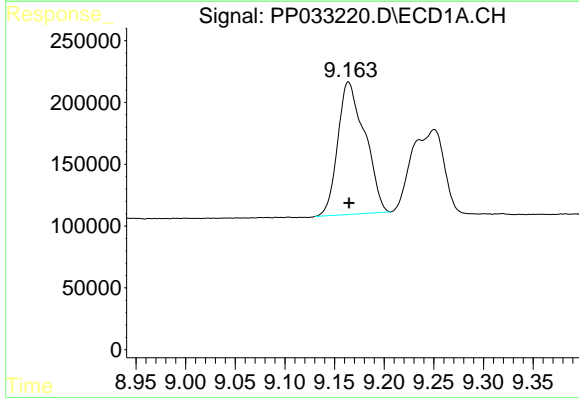
R.T.: 9.864 min
 Delta R.T.: -0.003 min
 Response: 1122972
 Conc: 545.64 ng/ml

Instrument :
 ECD_P
 ClientSampleId :
 AR1262CCC500



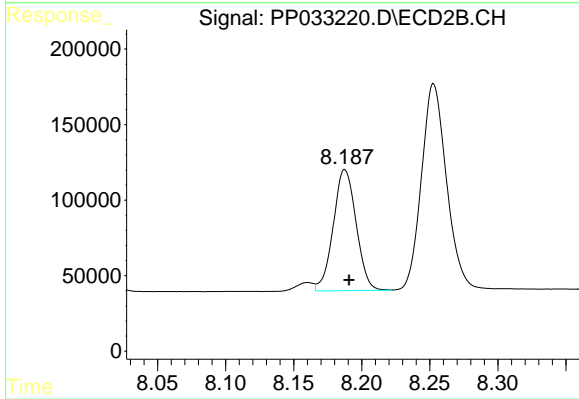
#40 AR-1262-5

R.T.: 8.750 min
 Delta R.T.: -0.002 min
 Response: 838078
 Conc: 543.78 ng/ml



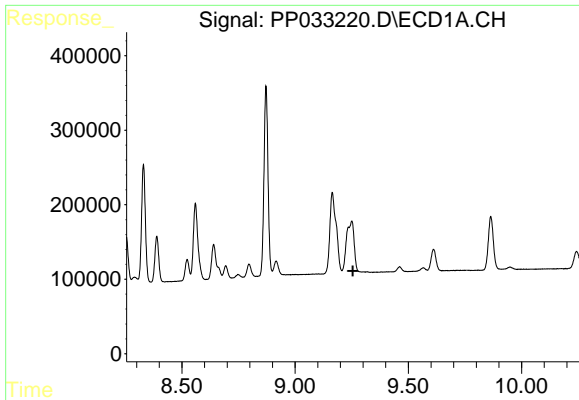
#41 AR-1268-1

R.T.: 9.164 min
 Delta R.T.: 0.000 min
 Response: 2033749
 Conc: 270.03 ng/ml



#41 AR-1268-1

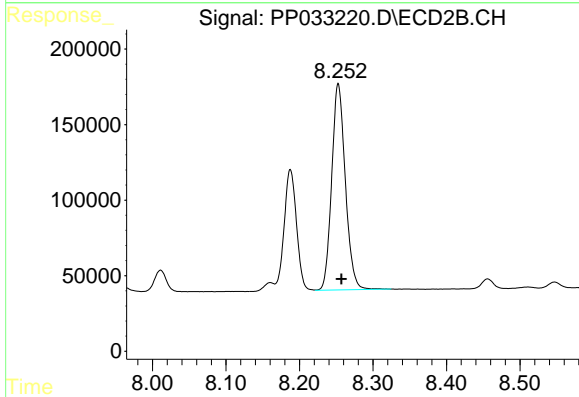
R.T.: 8.188 min
 Delta R.T.: -0.003 min
 Response: 938361
 Conc: 181.37 ng/ml



#42 AR-1268-2

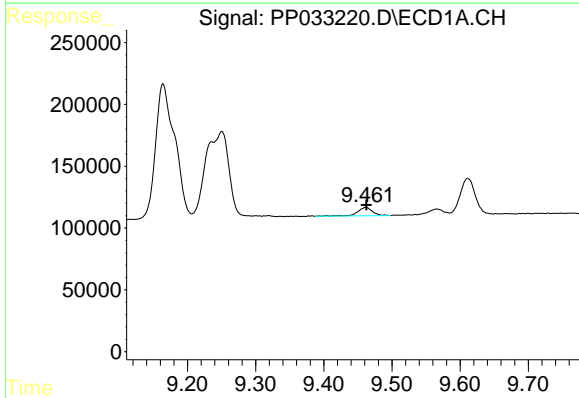
R.T.: 9.250 min
 Delta R.T.: -0.004 min
 Response: -22779
 Conc: N.D.

Instrument :
 ECD_P
 ClientSampleId :
 AR1262CCC500



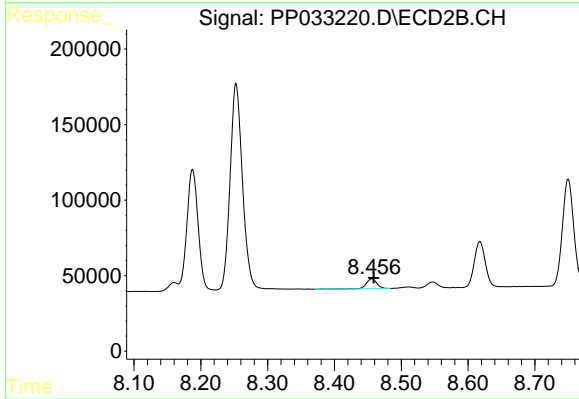
#42 AR-1268-2

R.T.: 8.253 min
 Delta R.T.: -0.004 min
 Response: 1756253
 Conc: 357.07 ng/ml



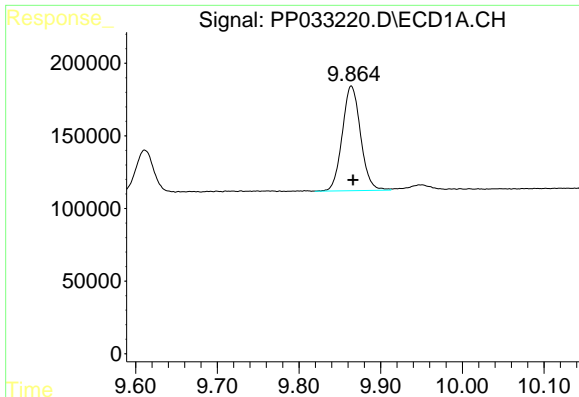
#43 AR-1268-3

R.T.: 9.462 min
 Delta R.T.: -0.001 min
 Response: 104264
 Conc: 16.99 ng/ml



#43 AR-1268-3

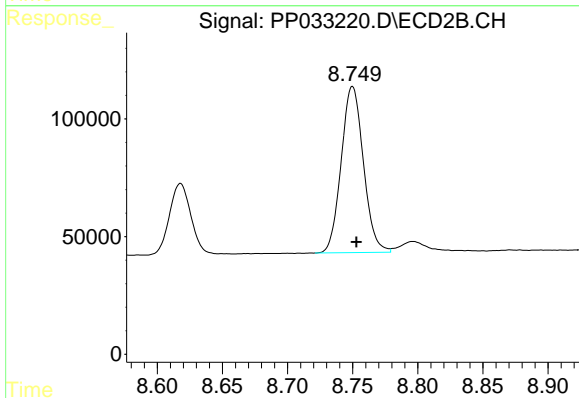
R.T.: 8.456 min
 Delta R.T.: -0.003 min
 Response: 72228
 Conc: 16.52 ng/ml



#44 AR-1268-4

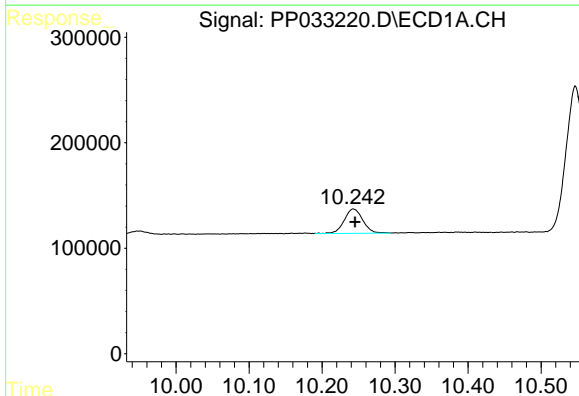
R.T.: 9.864 min
 Delta R.T.: -0.002 min
 Response: 1122972
 Conc: 517.33 ng/ml

Instrument :
 ECD_P
 ClientSampleId :
 AR1262CCC500



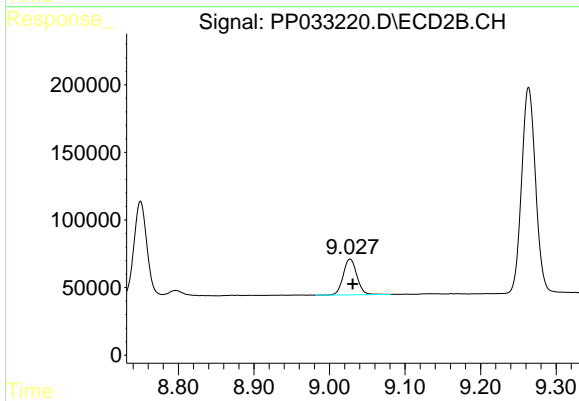
#44 AR-1268-4

R.T.: 8.750 min
 Delta R.T.: -0.003 min
 Response: 838078
 Conc: 504.38 ng/ml



#45 AR-1268-5

R.T.: 10.243 min
 Delta R.T.: -0.002 min
 Response: 411197
 Conc: 25.12 ng/ml



#45 AR-1268-5

R.T.: 9.027 min
 Delta R.T.: -0.004 min
 Response: 332188
 Conc: 25.98 ng/ml