

Data Path : Z:\pestpcbsrv\HPCHEM1\ECD_P\Data\PP021021\
 Data File : PP033232.D
 Signal(s) : Signal #1: ECD1A.CH Signal #2: ECD2B.CH
 Acq On : 10 Feb 2021 17:30
 Operator : DD\AJ
 Sample : AR1254CCC500
 Misc :
 ALS Vial : 5 Sample Multiplier: 1

Instrument :
 ECD_P
 ClientSampled :

Integration File signal 1: autoint1.e
 Integration File signal 2: autoint2.e
 Quant Time: Feb 11 03:37:50 2021
 Quant Method : Z:\pestpcbsrv\HPCHEM1\ECD_P\methods\PP020821.M
 Quant Title : GC EXTRACTABLES
 QLast Update : Tue Feb 09 04:00:57 2021
 Response via : Initial Calibration
 Integrator: ChemStation 6890 Scale Mode: Small noise peaks clipped

Volume Inj. : 2 µl
 Signal #1 Phase : ZB-MR1 Signal #2 Phase: ZB-MR2
 Signal #1 Info : 30Mx0.32mmx 0.50µ Signal #2 Info : 30M x 0.32mm x 0.25µm

Compound	RT#1	RT#2	Resp#1	Resp#2	ng/ml	ng/ml
System Monitoring Compounds						
1) SA Tetrachlo...	4.728	4.001	3158542	2313057	51.507	56.565
2) SA Decachlor...	10.548	9.264	2300975	1919301	52.822	57.292
Target Compounds						
3) L1 AR-1016-1	6.026	5.247	30191	7848	18.420	7.151 #
4) L1 AR-1016-2	6.052	5.247f	31246	7848	12.477	4.809 #
6) L1 AR-1016-4	0.000	5.507	0	398290	N.D.	553.070 #
7) L1 AR-1016-5	6.534	5.735	300567	242877	229.172	258.088
9) L2 AR-1221-2	5.073	4.353	36451	29022	78.355	91.839
12) L3 AR-1232-2	0.000	5.247f	0	7848	N.D.	10.616 #
13) L3 AR-1232-3	6.052	0.000	31246	0	28.481	N.D. #
14) L3 AR-1232-4	0.000	5.551	0	108658	N.D.	309.965 #
15) L3 AR-1232-5	6.319	5.735	465041	242877	1272.636	639.068 #
16) L4 AR-1242-1	6.026	5.247	30191	7848	23.225	9.068 #
17) L4 AR-1242-2	6.052	5.247f	31246	7848	15.858	6.115 #
19) L4 AR-1242-4	0.000	5.551	0	108658	N.D.	156.003 #
20) L4 AR-1242-5	6.999	6.113	277492	995639	267.088	1179.149 #
21) L5 AR-1248-1	6.026	5.247	30191	7848	31.532	12.068 #
22) L5 AR-1248-2	6.319	5.507	465041	398290	350.956	415.164
23) L5 AR-1248-3	6.534	5.551	300567	108658	185.618	106.867 #
24) L5 AR-1248-4	6.958	5.735	448480	242877	260.647	195.983
25) L5 AR-1248-5	6.999	6.157	277492	119906	159.478	106.174 #
26) L6 AR-1254-1	6.929	6.113	848417	995639	451.881	520.963
27) L6 AR-1254-2	7.157	6.272	1349002	854676	460.134	521.263
28) L6 AR-1254-3	7.535	6.691	1435901	1399481	472.756	520.702
29) L6 AR-1254-4	7.829	6.930	1150113	832625	497.180	557.652
30) L6 AR-1254-5	8.256	7.356	1181856	1234748	488.414	509.936
31) L7 AR-1260-1	7.702	6.826	581870	681726	265.774	397.456 #
32) L7 AR-1260-2	7.966	7.023	761498	556871	260.551	275.595
33) L7 AR-1260-3	8.316f	7.174	169687	571103	66.300	287.882 #
34) L7 AR-1260-4	8.549	7.656	476071	59994	194.867	35.662 #
35) L7 AR-1260-5	8.872	7.904	189911	145224	35.280	37.743
36) L8 AR-1262-1	8.316f	7.356	169687	1234748	44.634	991.411 #
37) L8 AR-1262-2	8.872	7.904	189911	145224	30.333	33.024
38) L8 AR-1262-3	9.182f	0.000	142881	0	34.854	N.D. #
39) L8 AR-1262-4	9.230f	8.250	33109	155457	10.620	45.566 #
41) L9 AR-1268-1	9.182f	0.000	142881	0	18.971	N.D. #
42) L9 AR-1268-2	9.230f	8.250	33109	155457	5.129	31.606 #
45) L9 AR-1268-5	10.242	0.000	30100	0	1.839	N.D. #

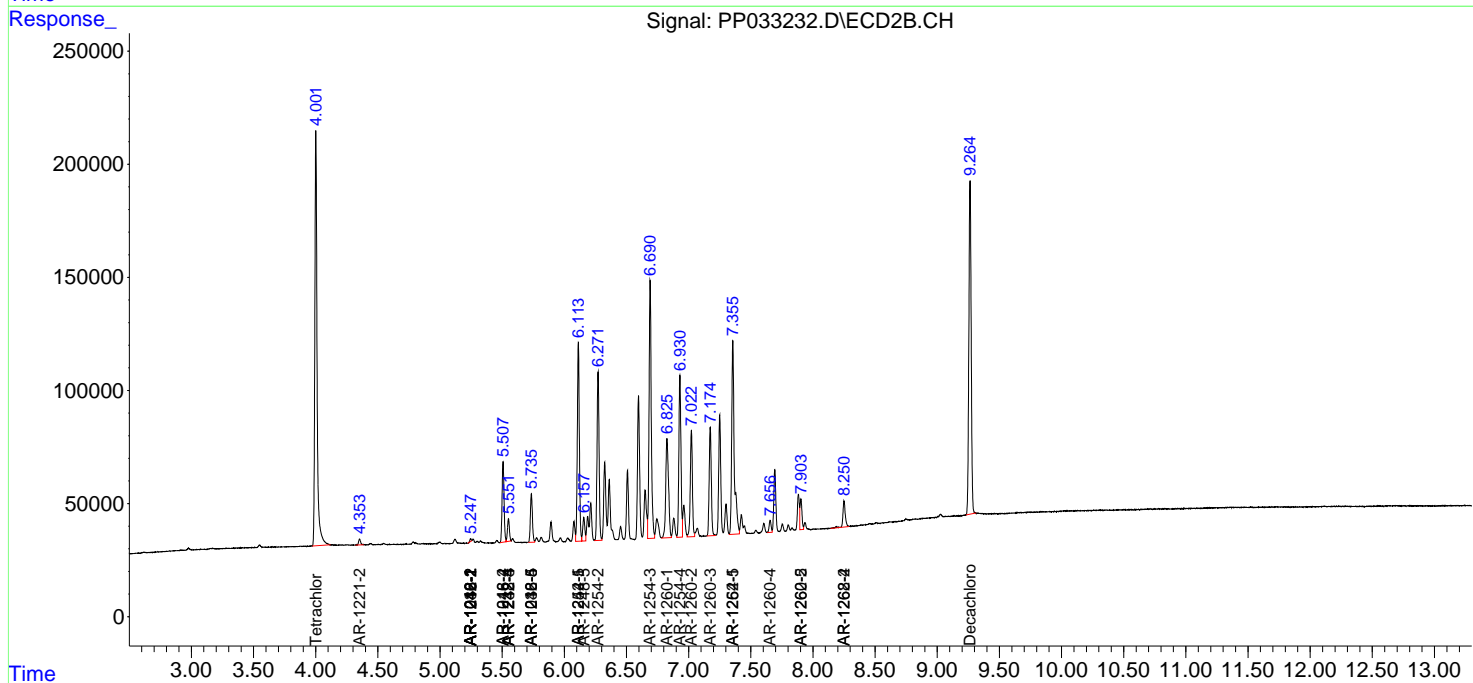
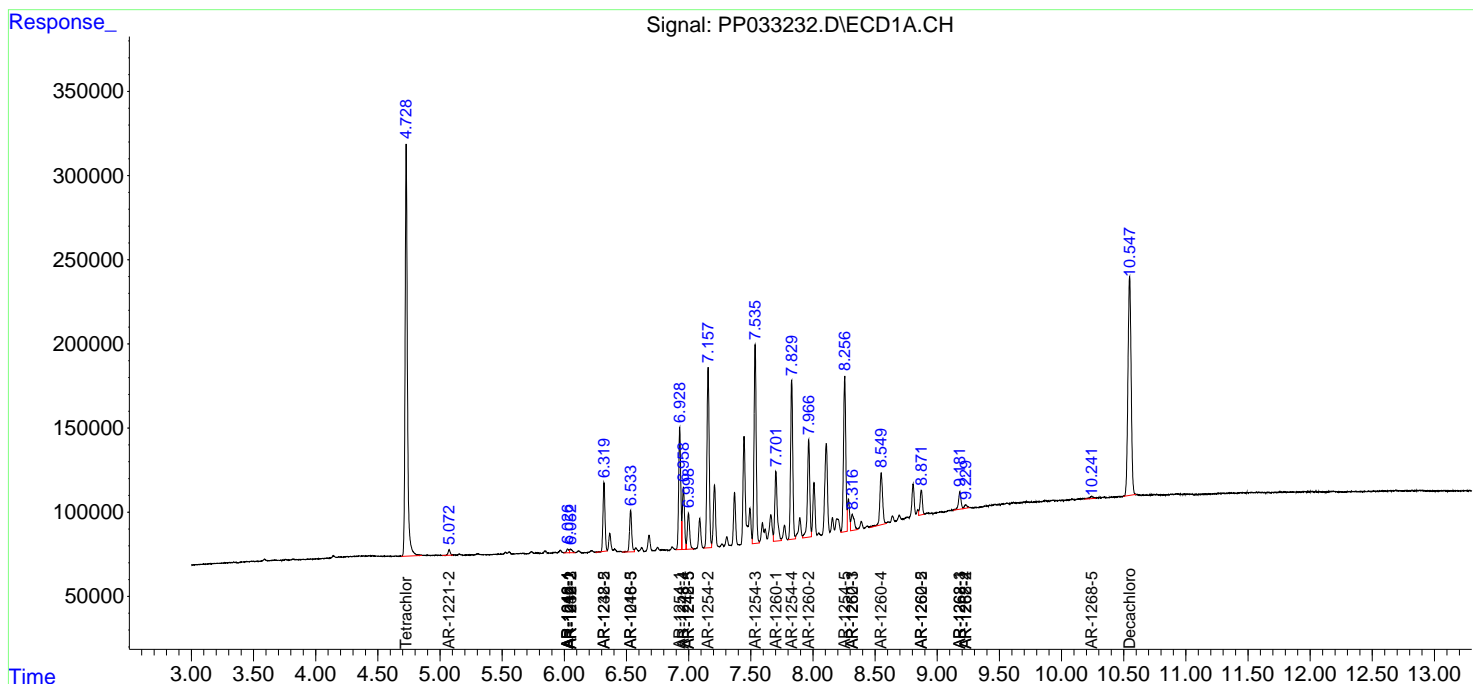
(f)=RT Delta > 1/2 Window (#)=Amounts differ by > 25% (m)=manual int.

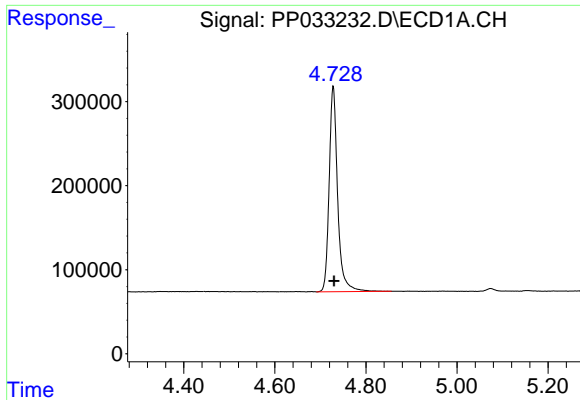
Data Path : Z:\pestpcbsrv\HPCHEM1\ECD_P\Data\PP021021\
 Data File : PP033232.D
 Signal(s) : Signal #1: ECD1A.CH Signal #2: ECD2B.CH
 Acq On : 10 Feb 2021 17:30
 Operator : DD\AJ
 Sample : AR1254CCC500
 Misc :
 ALS Vial : 5 Sample Multiplier: 1

Instrument :
 ECD_P
 ClientSampled :

Integration File signal 1: autoint1.e
 Integration File signal 2: autoint2.e
 Quant Time: Feb 11 03:37:50 2021
 Quant Method : Z:\pestpcbsrv\HPCHEM1\ECD_P\methods\PP020821.M
 Quant Title : GC EXTRACTABLES
 QLast Update : Tue Feb 09 04:00:57 2021
 Response via : Initial Calibration
 Integrator: ChemStation 6890 Scale Mode: Small noise peaks clipped

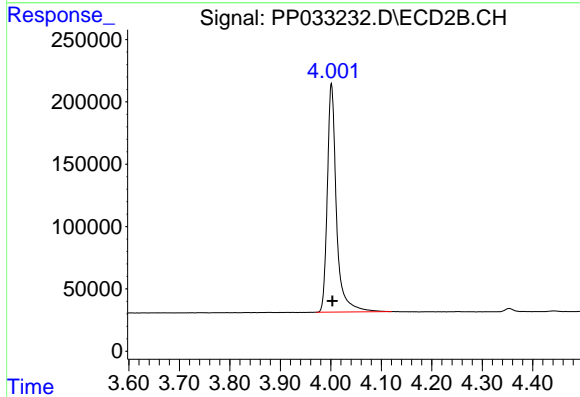
Volume Inj. : 2 µl
 Signal #1 Phase : ZB-MR1 Signal #2 Phase: ZB-MR2
 Signal #1 Info : 30Mx0.32mmx 0.50µ Signal #2 Info : 30M x 0.32mm x 0.25µm



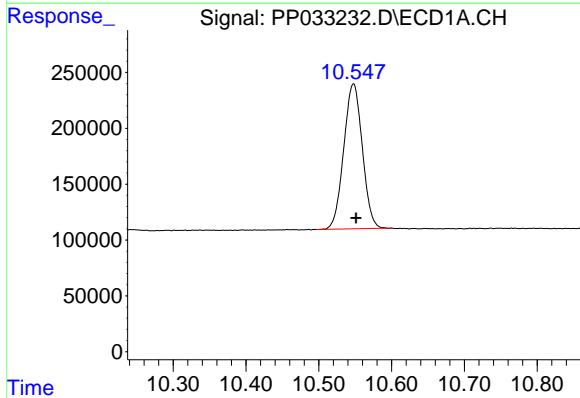


#1 Tetrachloro-m-xylene
 R.T.: 4.728 min
 Delta R.T.: -0.002 min
 Response: 3158542
 Conc: 51.51 ng/ml

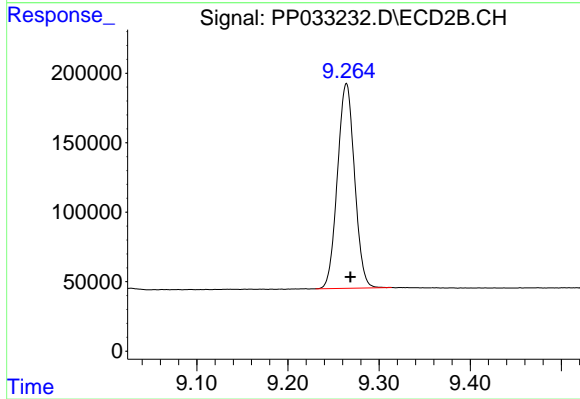
Instrument :
 ECD_P
 ClientSampled :



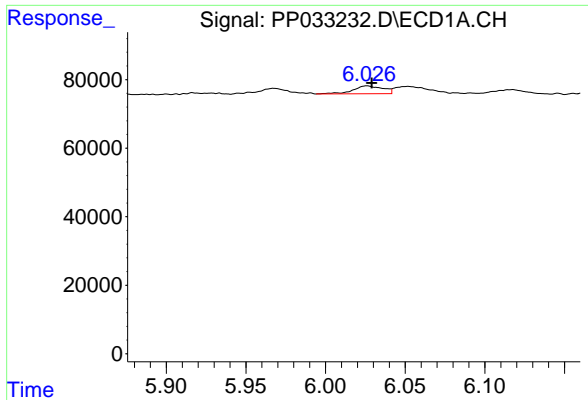
#1 Tetrachloro-m-xylene
 R.T.: 4.001 min
 Delta R.T.: -0.002 min
 Response: 2313057
 Conc: 56.57 ng/ml



#2 Decachlorobiphenyl
 R.T.: 10.548 min
 Delta R.T.: -0.003 min
 Response: 2300975
 Conc: 52.82 ng/ml



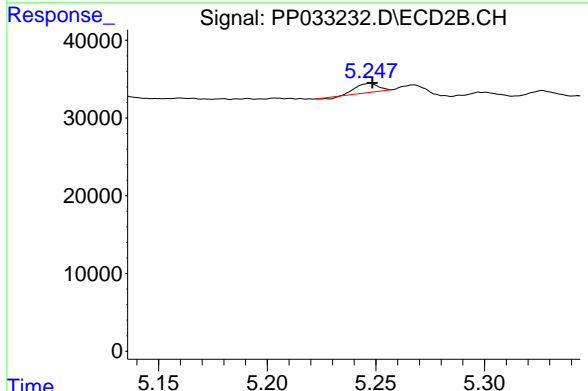
#2 Decachlorobiphenyl
 R.T.: 9.264 min
 Delta R.T.: -0.004 min
 Response: 1919301
 Conc: 57.29 ng/ml



#3 AR-1016-1

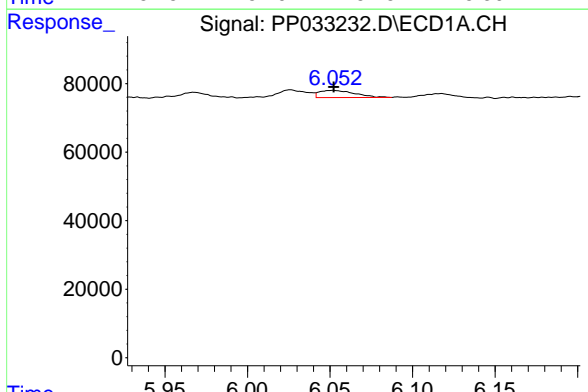
R.T.: 6.026 min
 Delta R.T.: -0.003 min
 Response: 30191
 Conc: 18.42 ng/ml

Instrument :
 ECD_P
 ClientSampleId :



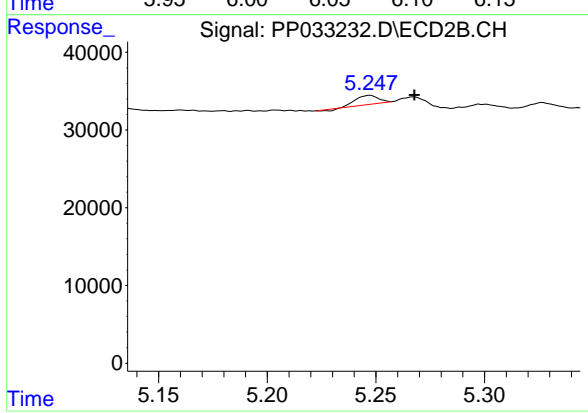
#3 AR-1016-1

R.T.: 5.247 min
 Delta R.T.: -0.001 min
 Response: 7848
 Conc: 7.15 ng/ml



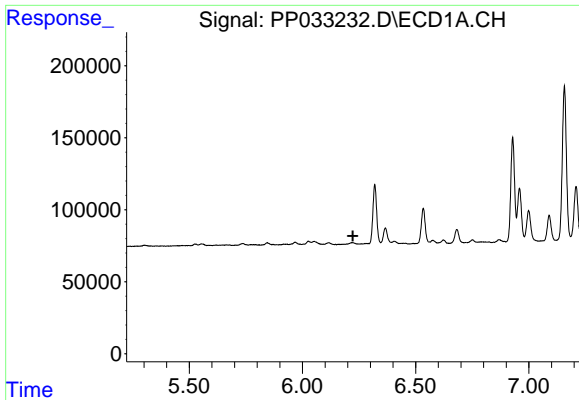
#4 AR-1016-2

R.T.: 6.052 min
 Delta R.T.: 0.000 min
 Response: 31246
 Conc: 12.48 ng/ml



#4 AR-1016-2

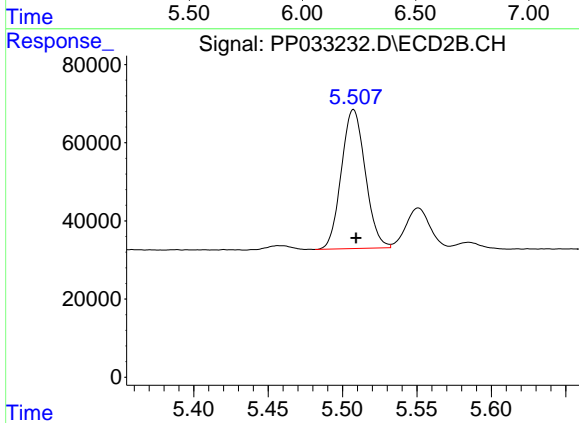
R.T.: 5.247 min
 Delta R.T.: -0.021 min
 Response: 7848
 Conc: 4.81 ng/ml



#6 AR-1016-4

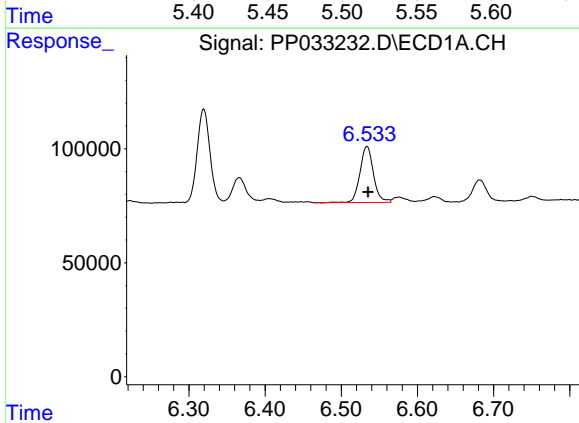
R.T.: 0.000 min
 Exp R.T.: 6.222 min
 Response: 0
 Conc: N.D.

Instrument :
 ECD_P
 ClientSampled :



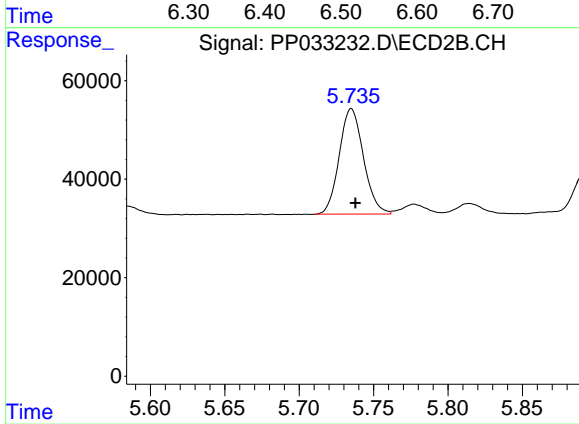
#6 AR-1016-4

R.T.: 5.507 min
 Delta R.T.: -0.002 min
 Response: 398290
 Conc: 553.07 ng/ml



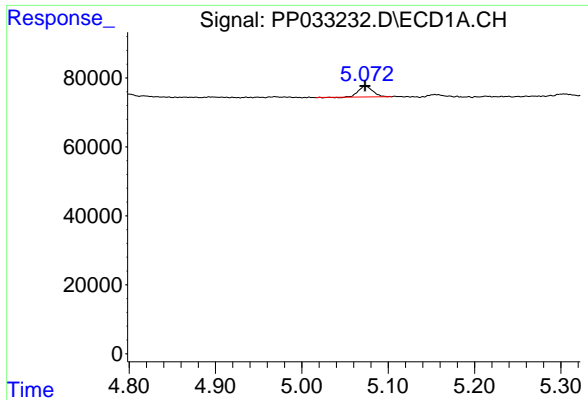
#7 AR-1016-5

R.T.: 6.534 min
 Delta R.T.: -0.002 min
 Response: 300567
 Conc: 229.17 ng/ml



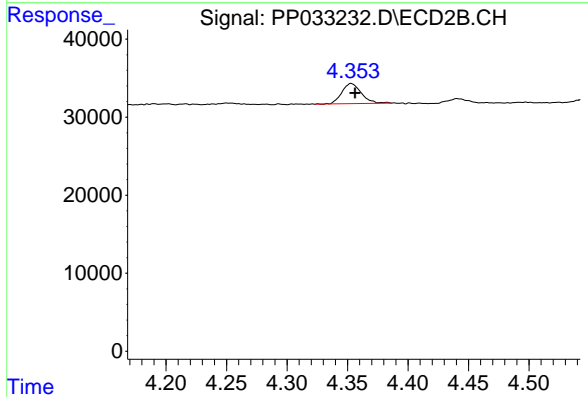
#7 AR-1016-5

R.T.: 5.735 min
 Delta R.T.: -0.003 min
 Response: 242877
 Conc: 258.09 ng/ml

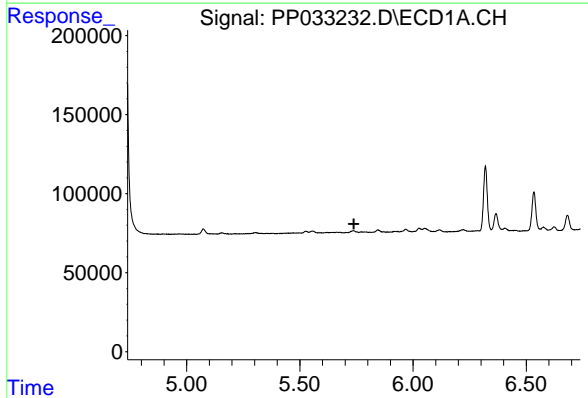


#9 AR-1221-2
 R.T.: 5.073 min
 Delta R.T.: 0.000 min
 Response: 36451
 Conc: 78.36 ng/ml

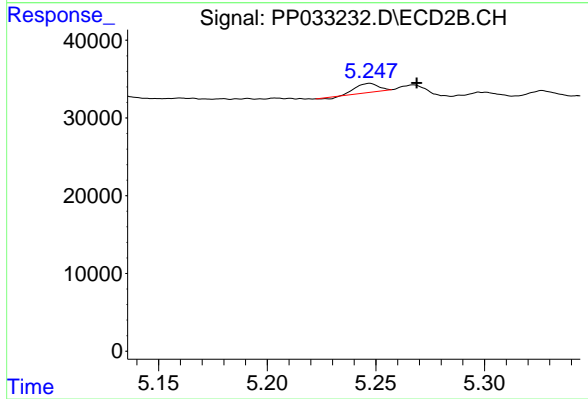
Instrument :
 ECD_P
 ClientSampled :



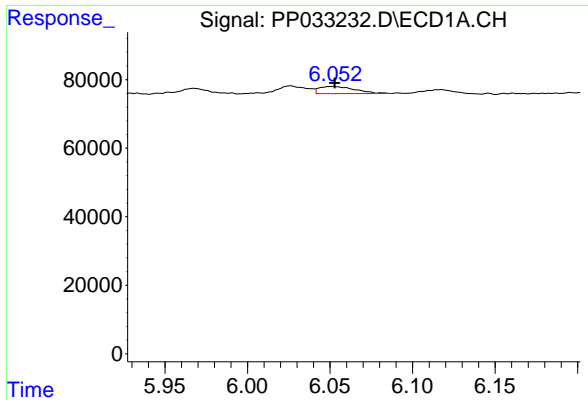
#9 AR-1221-2
 R.T.: 4.353 min
 Delta R.T.: -0.003 min
 Response: 29022
 Conc: 91.84 ng/ml



#12 AR-1232-2
 R.T.: 0.000 min
 Exp R.T. : 5.738 min
 Response: 0
 Conc: N.D.



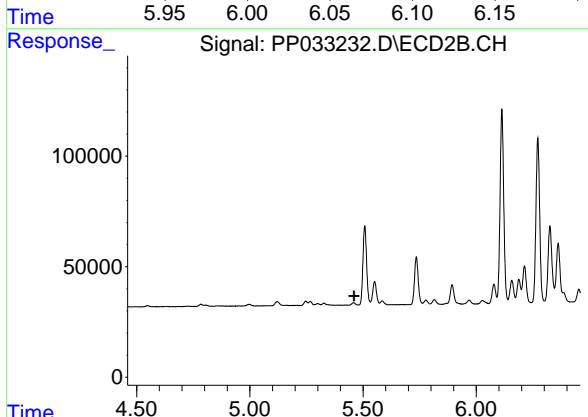
#12 AR-1232-2
 R.T.: 5.247 min
 Delta R.T.: -0.022 min
 Response: 7848
 Conc: 10.62 ng/ml



#13 AR-1232-3

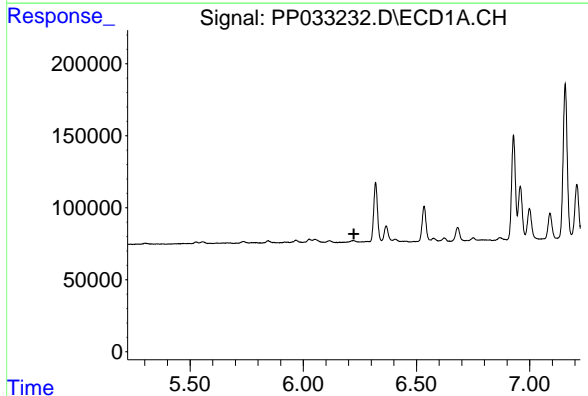
R.T.: 6.052 min
 Delta R.T.: -0.001 min
 Response: 31246
 Conc: 28.48 ng/ml

Instrument :
 ECD_P
 ClientSampled :



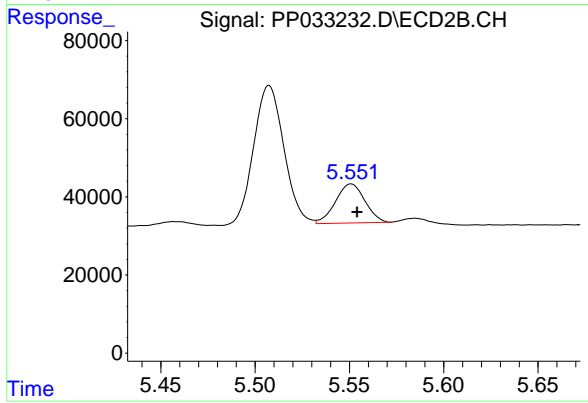
#13 AR-1232-3

R.T.: 0.000 min
 Exp R.T. : 5.460 min
 Response: 0
 Conc: N.D.



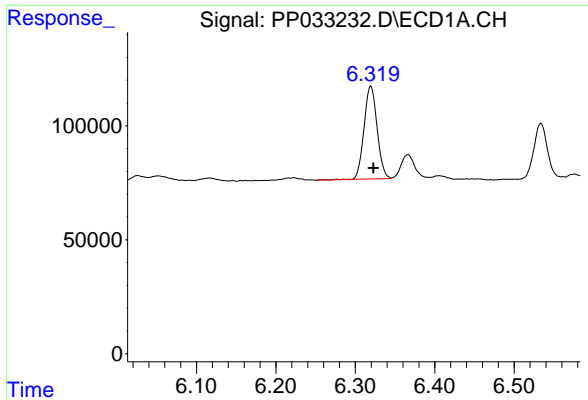
#14 AR-1232-4

R.T.: 0.000 min
 Exp R.T. : 6.224 min
 Response: 0
 Conc: N.D.



#14 AR-1232-4

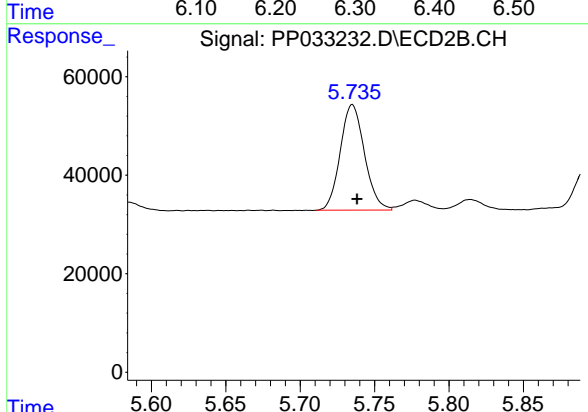
R.T.: 5.551 min
 Delta R.T.: -0.003 min
 Response: 108658
 Conc: 309.96 ng/ml



#15 AR-1232-5

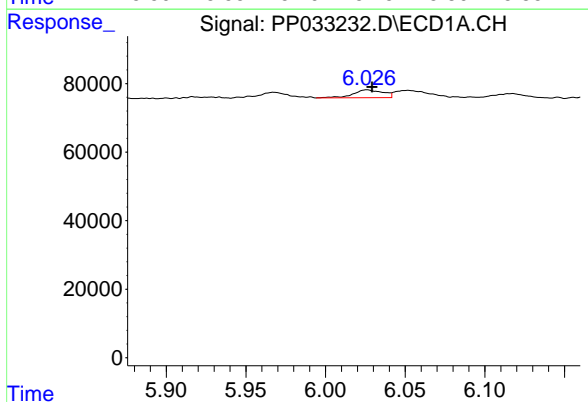
R.T.: 6.319 min
 Delta R.T.: -0.003 min
 Response: 465041
 Conc: 1272.64 ng/ml

Instrument :
 ECD_P
 ClientSampleId :



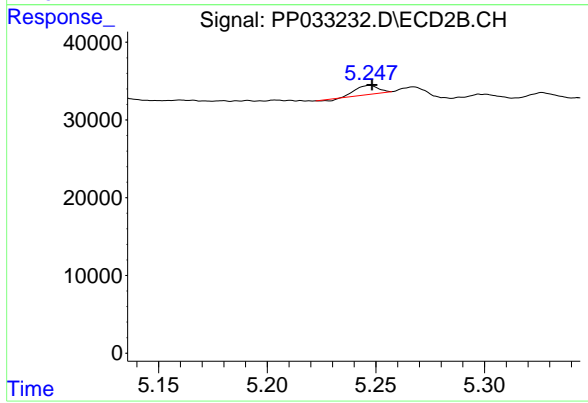
#15 AR-1232-5

R.T.: 5.735 min
 Delta R.T.: -0.003 min
 Response: 242877
 Conc: 639.07 ng/ml



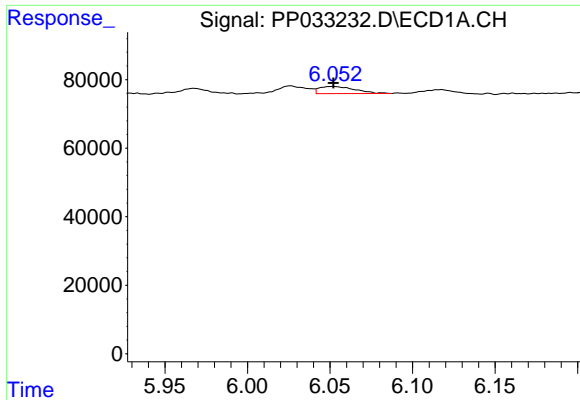
#16 AR-1242-1

R.T.: 6.026 min
 Delta R.T.: -0.003 min
 Response: 30191
 Conc: 23.23 ng/ml



#16 AR-1242-1

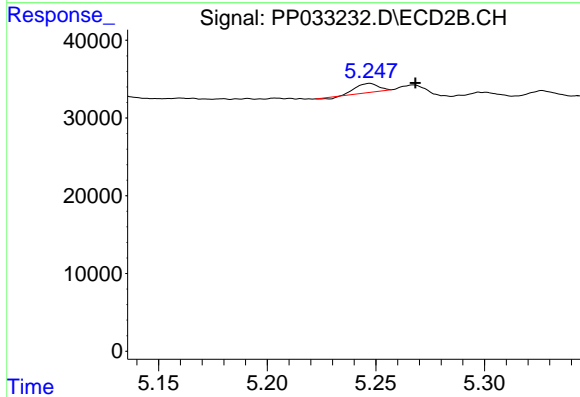
R.T.: 5.247 min
 Delta R.T.: -0.001 min
 Response: 7848
 Conc: 9.07 ng/ml



#17 AR-1242-2

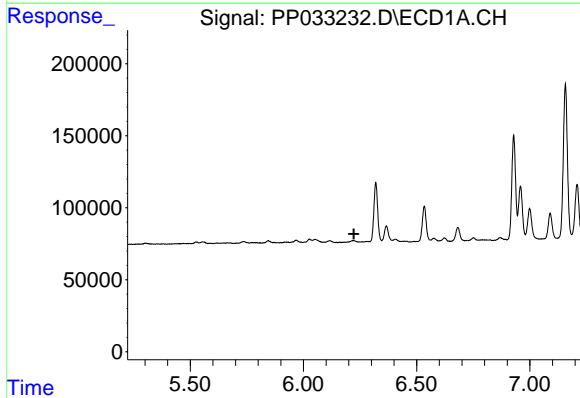
R.T.: 6.052 min
 Delta R.T.: 0.000 min
 Response: 31246
 Conc: 15.86 ng/ml

Instrument :
 ECD_P
 ClientSampled :



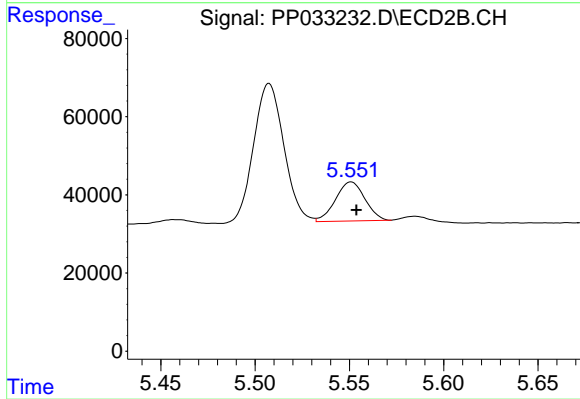
#17 AR-1242-2

R.T.: 5.247 min
 Delta R.T.: -0.021 min
 Response: 7848
 Conc: 6.12 ng/ml



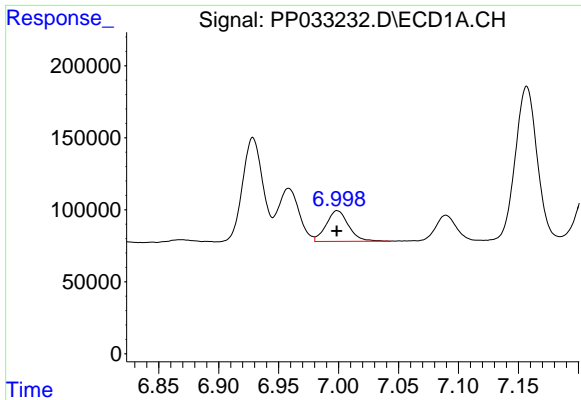
#19 AR-1242-4

R.T.: 0.000 min
 Exp R.T. : 6.222 min
 Response: 0
 Conc: N.D.



#19 AR-1242-4

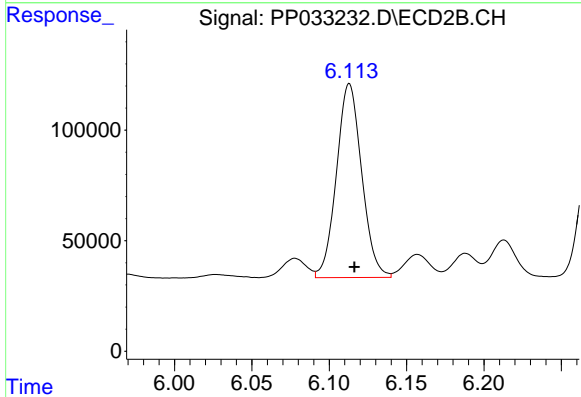
R.T.: 5.551 min
 Delta R.T.: -0.003 min
 Response: 108658
 Conc: 156.00 ng/ml



#20 AR-1242-5

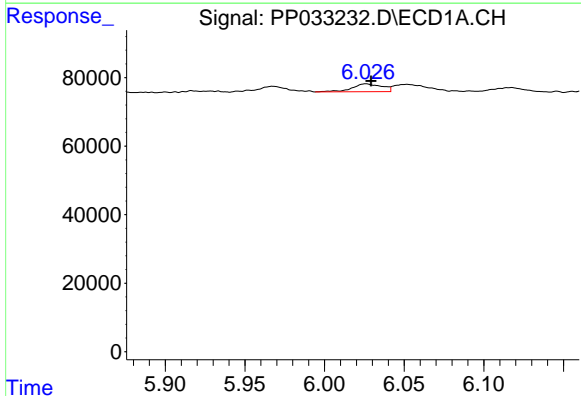
R.T.: 6.999 min
 Delta R.T.: 0.000 min
 Response: 277492
 Conc: 267.09 ng/ml

Instrument :
 ECD_P
 ClientSampleId :



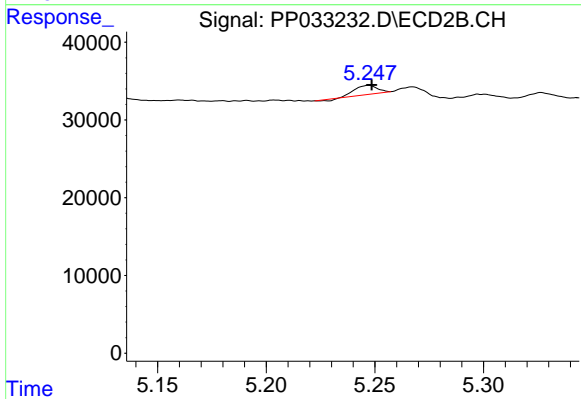
#20 AR-1242-5

R.T.: 6.113 min
 Delta R.T.: -0.003 min
 Response: 995639
 Conc: 1179.15 ng/ml



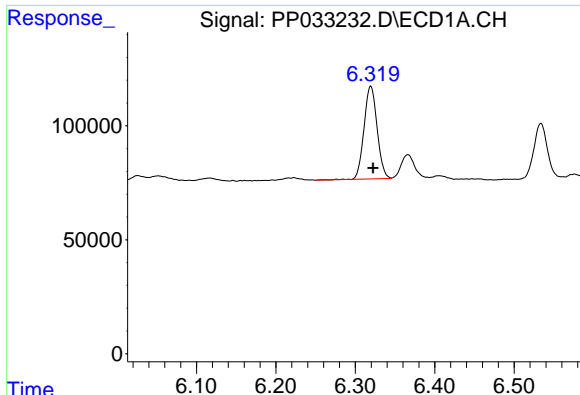
#21 AR-1248-1

R.T.: 6.026 min
 Delta R.T.: -0.003 min
 Response: 30191
 Conc: 31.53 ng/ml



#21 AR-1248-1

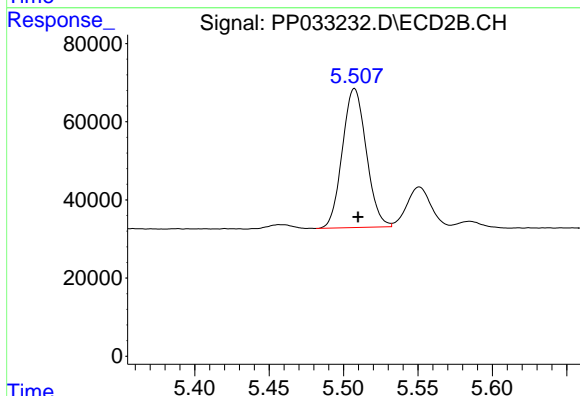
R.T.: 5.247 min
 Delta R.T.: -0.001 min
 Response: 7848
 Conc: 12.07 ng/ml



#22 AR-1248-2

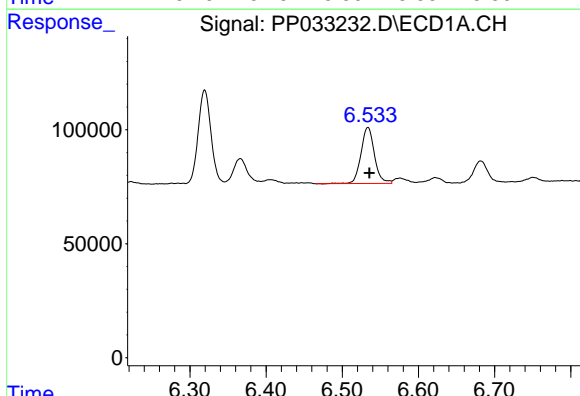
R.T.: 6.319 min
 Delta R.T.: -0.003 min
 Response: 465041
 Conc: 350.96 ng/ml

Instrument :
 ECD_P
 ClientSampled :



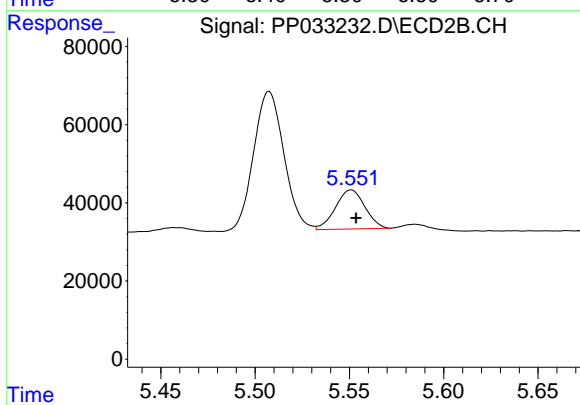
#22 AR-1248-2

R.T.: 5.507 min
 Delta R.T.: -0.002 min
 Response: 398290
 Conc: 415.16 ng/ml



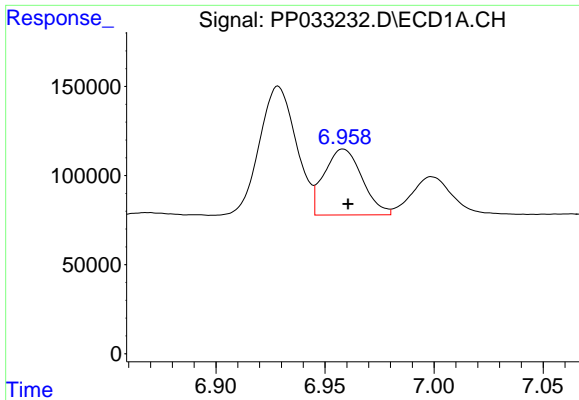
#23 AR-1248-3

R.T.: 6.534 min
 Delta R.T.: -0.002 min
 Response: 300567
 Conc: 185.62 ng/ml



#23 AR-1248-3

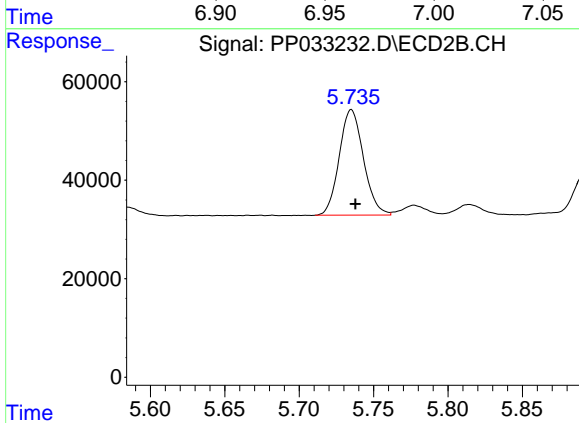
R.T.: 5.551 min
 Delta R.T.: -0.003 min
 Response: 108658
 Conc: 106.87 ng/ml



#24 AR-1248-4

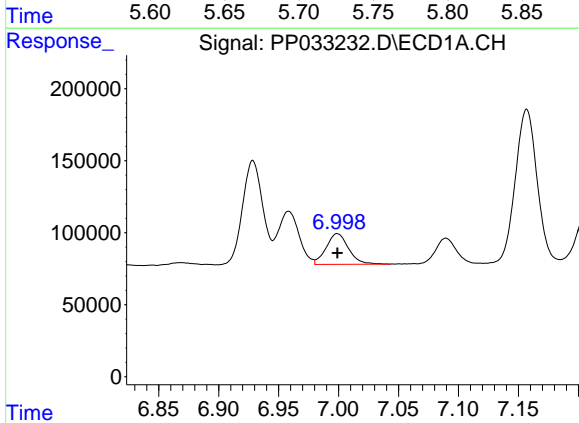
R.T.: 6.958 min
 Delta R.T.: -0.002 min
 Response: 448480
 Conc: 260.65 ng/ml

Instrument :
 ECD_P
 ClientSampleId :



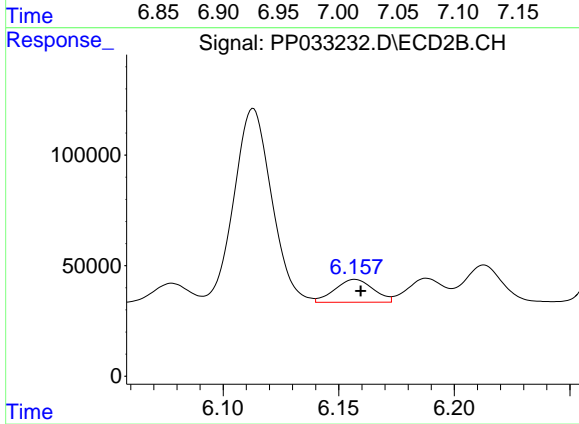
#24 AR-1248-4

R.T.: 5.735 min
 Delta R.T.: -0.003 min
 Response: 242877
 Conc: 195.98 ng/ml



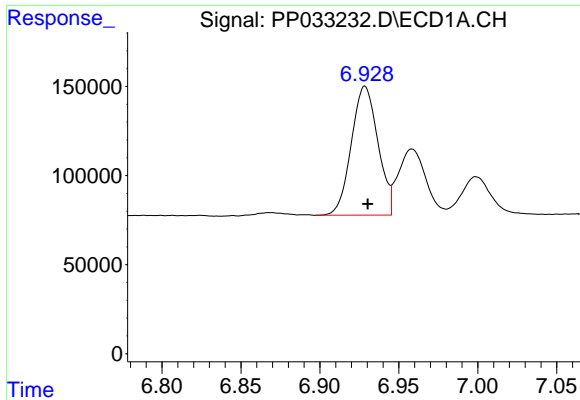
#25 AR-1248-5

R.T.: 6.999 min
 Delta R.T.: 0.000 min
 Response: 277492
 Conc: 159.48 ng/ml



#25 AR-1248-5

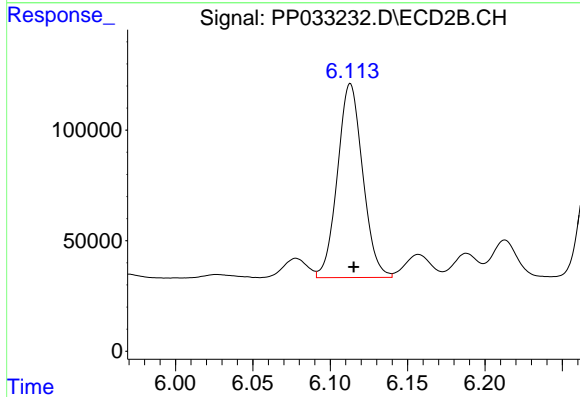
R.T.: 6.157 min
 Delta R.T.: -0.002 min
 Response: 119906
 Conc: 106.17 ng/ml



#26 AR-1254-1

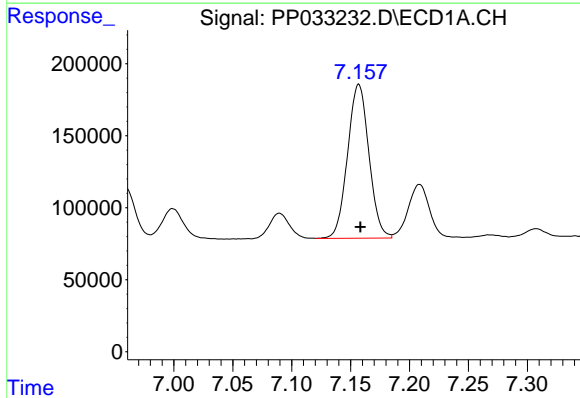
R.T.: 6.929 min
 Delta R.T.: -0.002 min
 Response: 848417
 Conc: 451.88 ng/ml

Instrument :
 ECD_P
 ClientSampled :



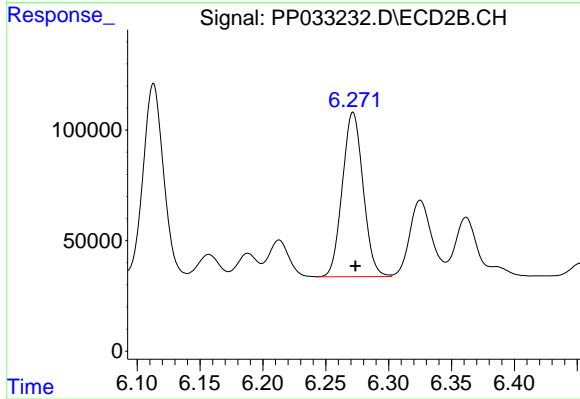
#26 AR-1254-1

R.T.: 6.113 min
 Delta R.T.: -0.002 min
 Response: 995639
 Conc: 520.96 ng/ml



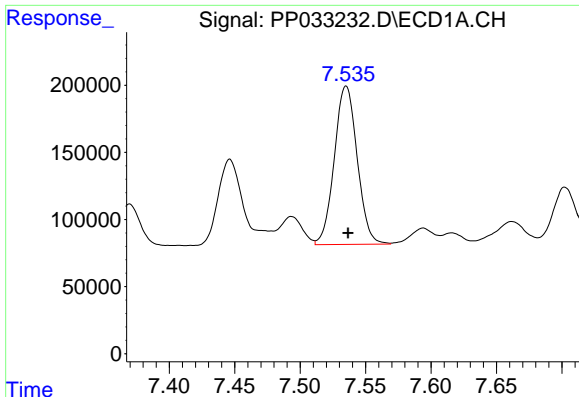
#27 AR-1254-2

R.T.: 7.157 min
 Delta R.T.: -0.001 min
 Response: 1349002
 Conc: 460.13 ng/ml



#27 AR-1254-2

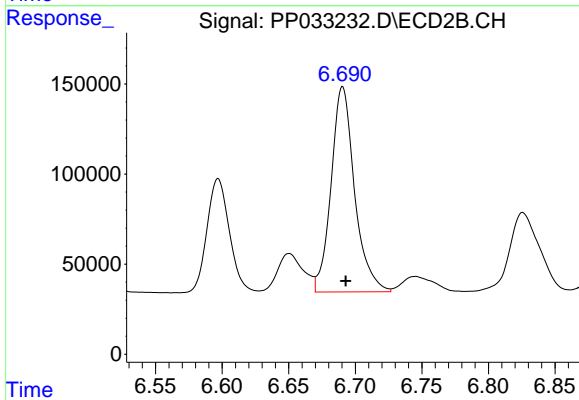
R.T.: 6.272 min
 Delta R.T.: -0.002 min
 Response: 854676
 Conc: 521.26 ng/ml



#28 AR-1254-3

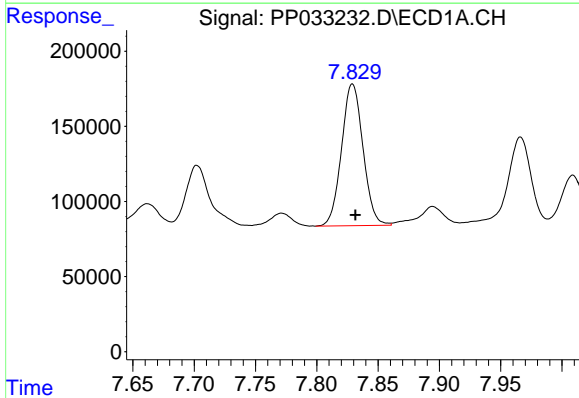
R.T.: 7.535 min
 Delta R.T.: -0.001 min
 Response: 1435901
 Conc: 472.76 ng/ml

Instrument :
 ECD_P
 ClientSampled :



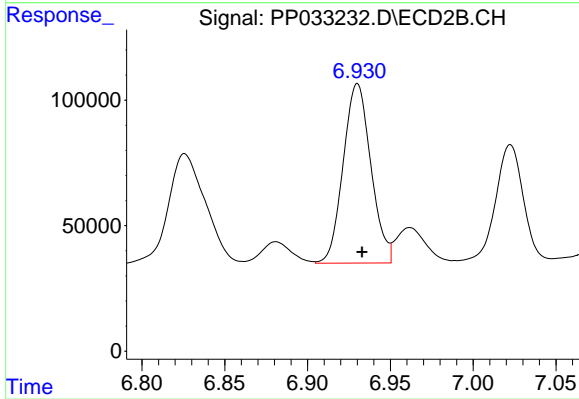
#28 AR-1254-3

R.T.: 6.691 min
 Delta R.T.: -0.002 min
 Response: 1399481
 Conc: 520.70 ng/ml



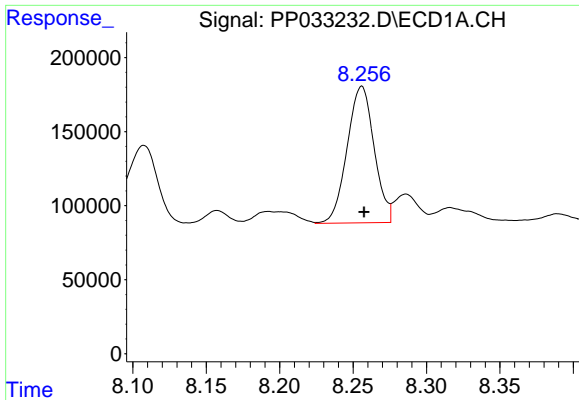
#29 AR-1254-4

R.T.: 7.829 min
 Delta R.T.: -0.002 min
 Response: 1150113
 Conc: 497.18 ng/ml



#29 AR-1254-4

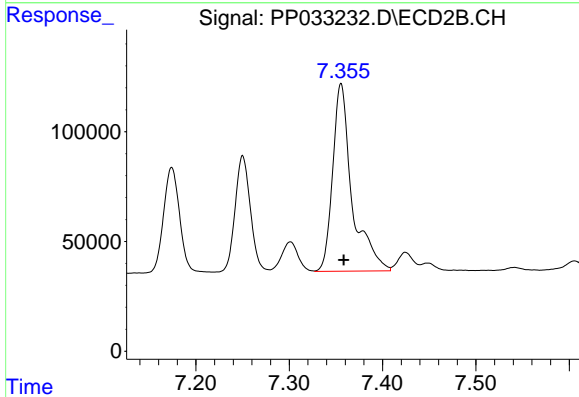
R.T.: 6.930 min
 Delta R.T.: -0.003 min
 Response: 832625
 Conc: 557.65 ng/ml



#30 AR-1254-5

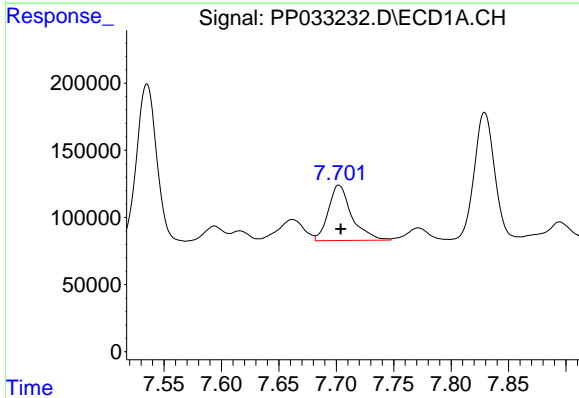
R.T.: 8.256 min
 Delta R.T.: -0.001 min
 Response: 1181856
 Conc: 488.41 ng/ml

Instrument :
 ECD_P
 ClientSampleId :



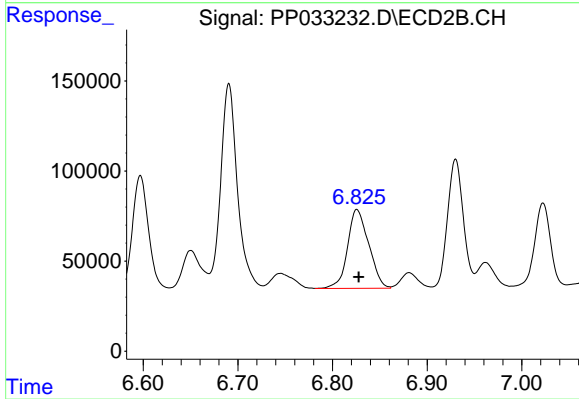
#30 AR-1254-5

R.T.: 7.356 min
 Delta R.T.: -0.003 min
 Response: 1234748
 Conc: 509.94 ng/ml



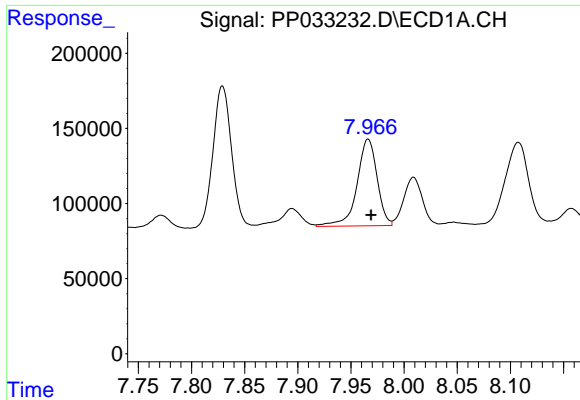
#31 AR-1260-1

R.T.: 7.702 min
 Delta R.T.: -0.002 min
 Response: 581870
 Conc: 265.77 ng/ml



#31 AR-1260-1

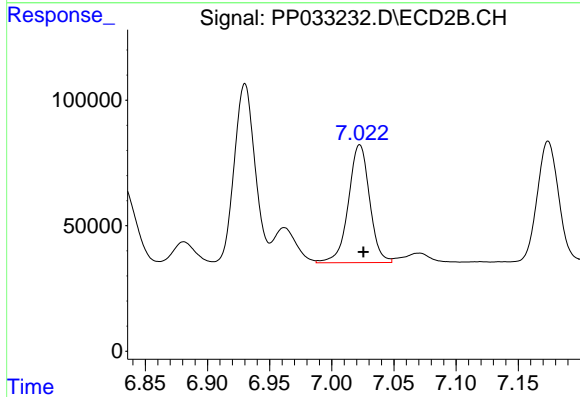
R.T.: 6.826 min
 Delta R.T.: -0.002 min
 Response: 681726
 Conc: 397.46 ng/ml



#32 AR-1260-2

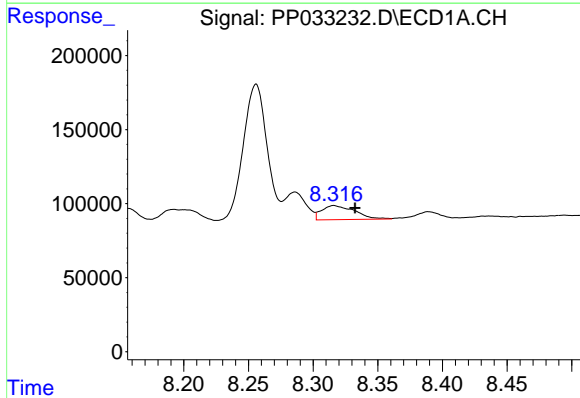
R.T.: 7.966 min
 Delta R.T.: -0.003 min
 Response: 761498
 Conc: 260.55 ng/ml

Instrument :
 ECD_P
 ClientSampled :



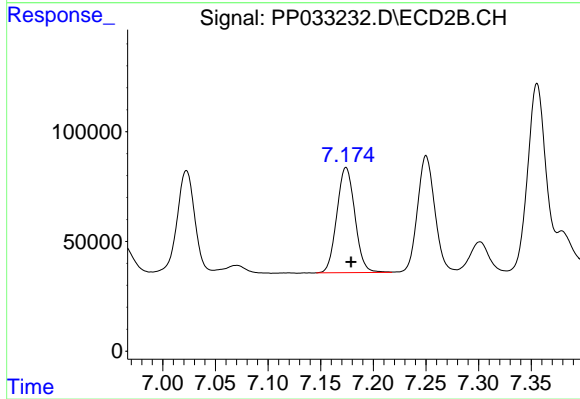
#32 AR-1260-2

R.T.: 7.023 min
 Delta R.T.: -0.003 min
 Response: 556871
 Conc: 275.60 ng/ml



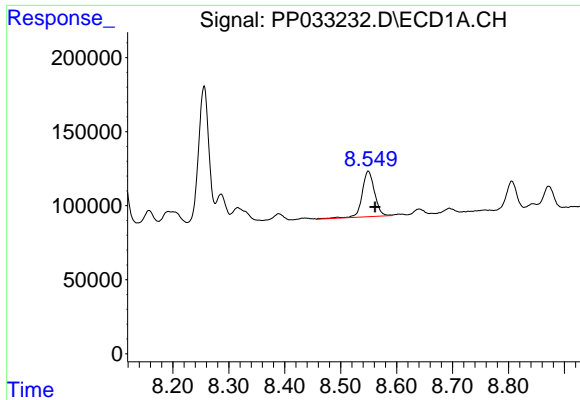
#33 AR-1260-3

R.T.: 8.316 min
 Delta R.T.: -0.016 min
 Response: 169687
 Conc: 66.30 ng/ml



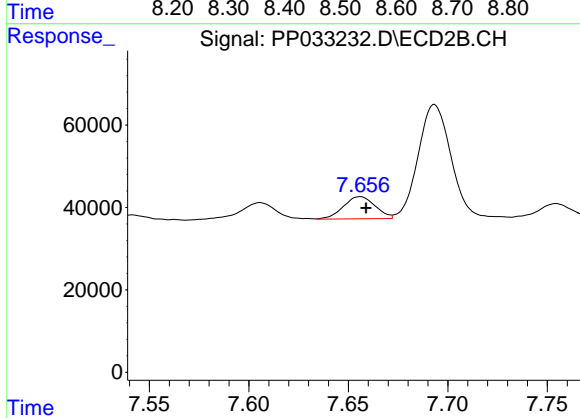
#33 AR-1260-3

R.T.: 7.174 min
 Delta R.T.: -0.005 min
 Response: 571103
 Conc: 287.88 ng/ml

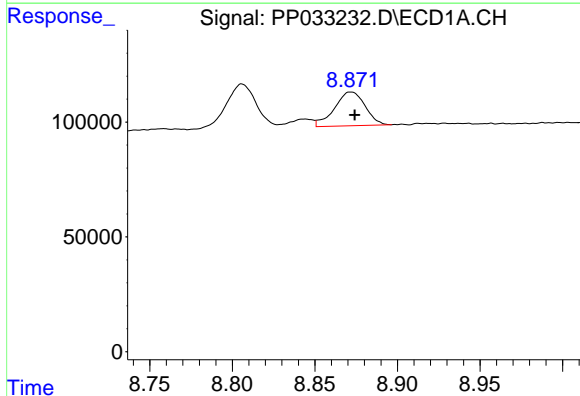


#34 AR-1260-4
 R.T.: 8.549 min
 Delta R.T.: -0.012 min
 Response: 476071
 Conc: 194.87 ng/ml

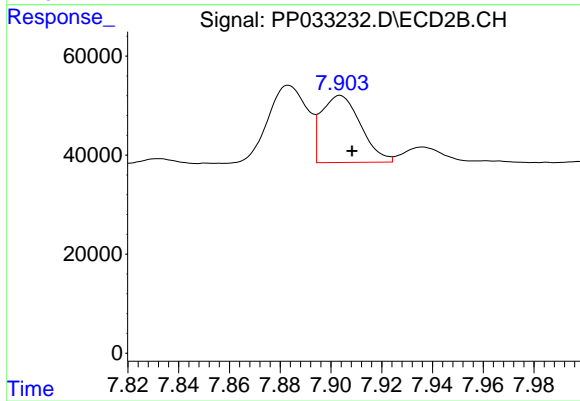
Instrument :
 ECD_P
 ClientSampleId :



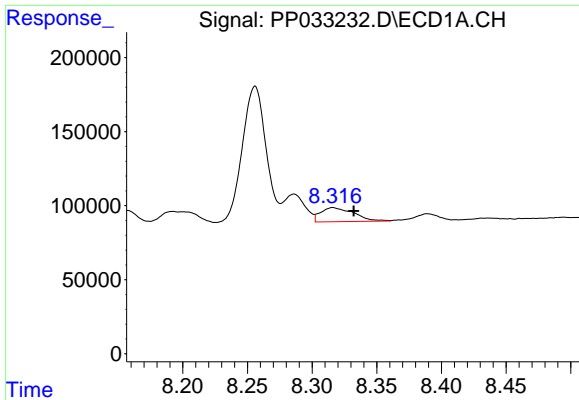
#34 AR-1260-4
 R.T.: 7.656 min
 Delta R.T.: -0.003 min
 Response: 59994
 Conc: 35.66 ng/ml



#35 AR-1260-5
 R.T.: 8.872 min
 Delta R.T.: -0.002 min
 Response: 189911
 Conc: 35.28 ng/ml



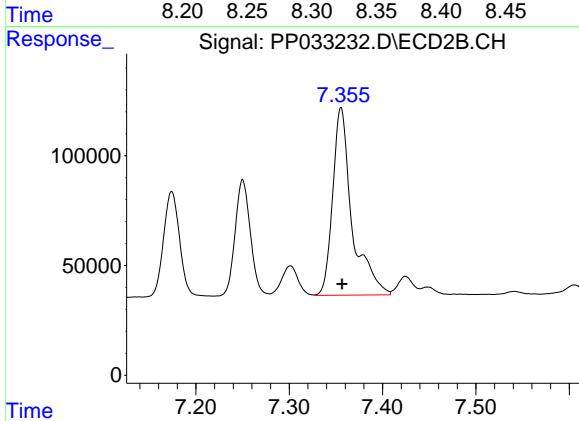
#35 AR-1260-5
 R.T.: 7.904 min
 Delta R.T.: -0.005 min
 Response: 145224
 Conc: 37.74 ng/ml



#36 AR-1262-1

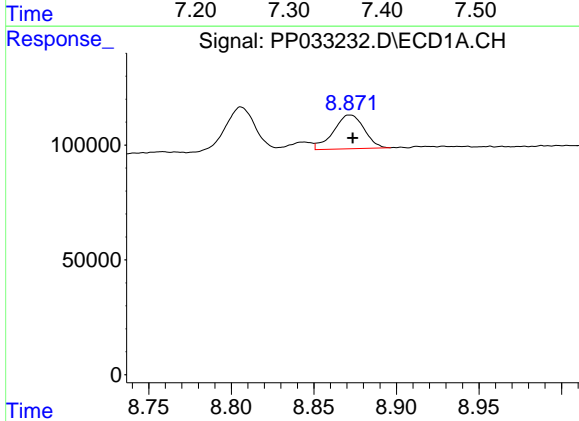
R.T.: 8.316 min
 Delta R.T.: -0.016 min
 Response: 169687
 Conc: 44.63 ng/ml

Instrument :
 ECD_P
 ClientSampled :



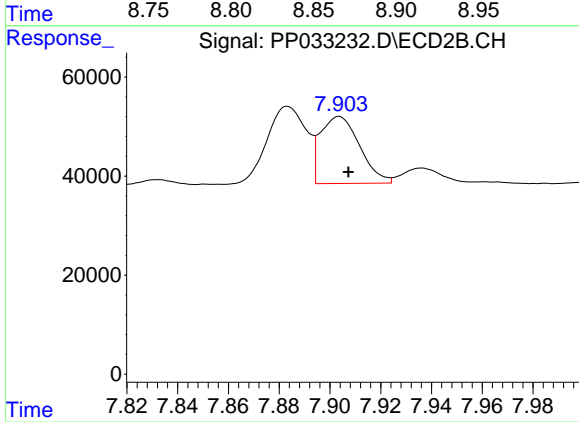
#36 AR-1262-1

R.T.: 7.356 min
 Delta R.T.: -0.001 min
 Response: 1234748
 Conc: 991.41 ng/ml



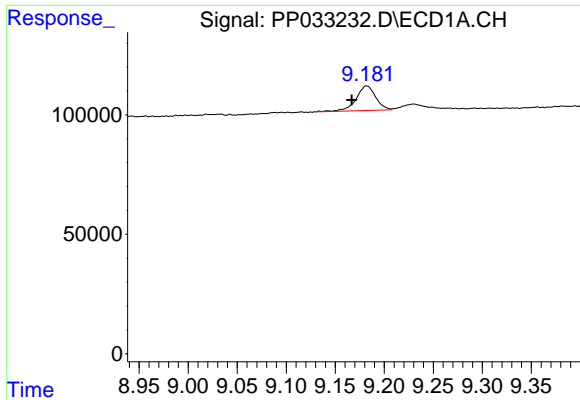
#37 AR-1262-2

R.T.: 8.872 min
 Delta R.T.: -0.002 min
 Response: 189911
 Conc: 30.33 ng/ml



#37 AR-1262-2

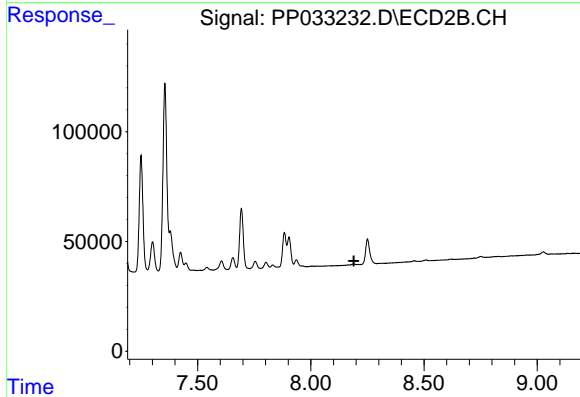
R.T.: 7.904 min
 Delta R.T.: -0.004 min
 Response: 145224
 Conc: 33.02 ng/ml



#38 AR-1262-3

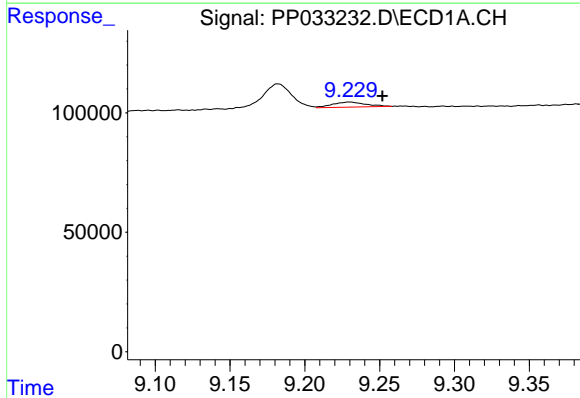
R.T.: 9.182 min
 Delta R.T.: 0.015 min
 Response: 142881
 Conc: 34.85 ng/ml

Instrument :
 ECD_P
 ClientSampled :



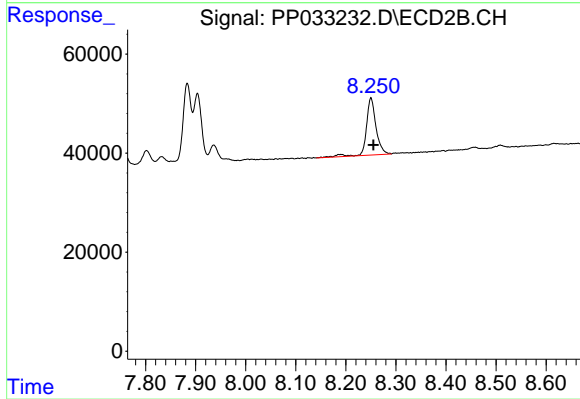
#38 AR-1262-3

R.T.: 0.000 min
 Exp R.T. : 8.191 min
 Response: 0
 Conc: N.D.



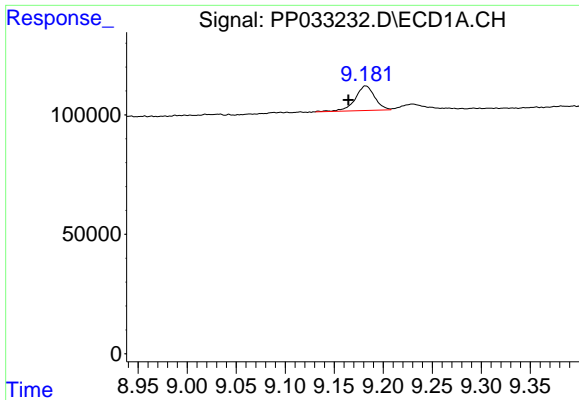
#39 AR-1262-4

R.T.: 9.230 min
 Delta R.T.: -0.022 min
 Response: 33109
 Conc: 10.62 ng/ml



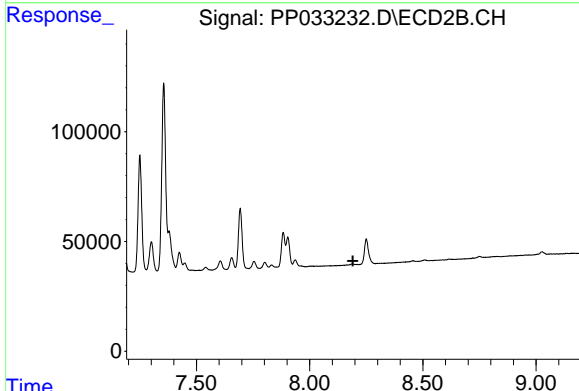
#39 AR-1262-4

R.T.: 8.250 min
 Delta R.T.: -0.005 min
 Response: 155457
 Conc: 45.57 ng/ml

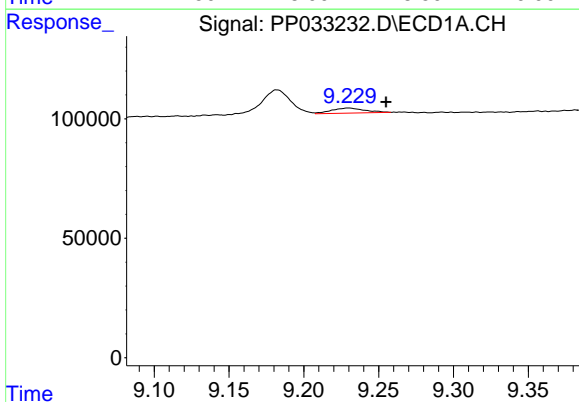


#41 AR-1268-1
 R.T.: 9.182 min
 Delta R.T.: 0.018 min
 Response: 142881
 Conc: 18.97 ng/ml

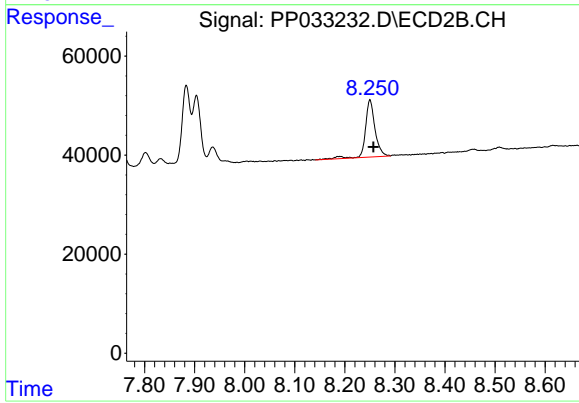
Instrument :
 ECD_P
 ClientSampled :



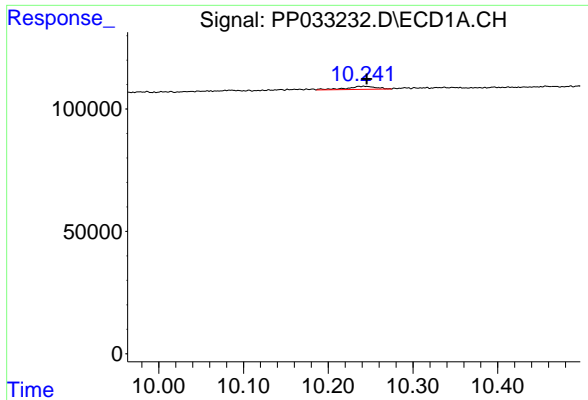
#41 AR-1268-1
 R.T.: 0.000 min
 Exp R.T. : 8.191 min
 Response: 0
 Conc: N.D.



#42 AR-1268-2
 R.T.: 9.230 min
 Delta R.T.: -0.025 min
 Response: 33109
 Conc: 5.13 ng/ml



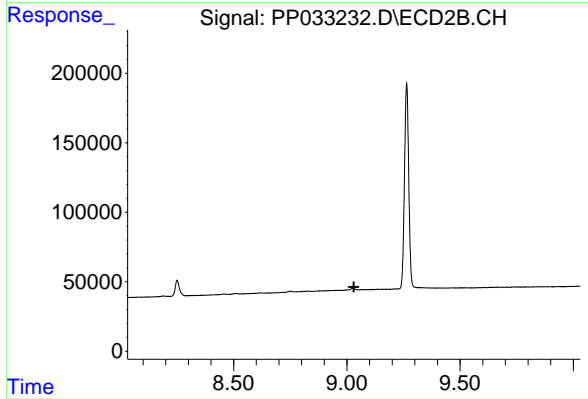
#42 AR-1268-2
 R.T.: 8.250 min
 Delta R.T.: -0.007 min
 Response: 155457
 Conc: 31.61 ng/ml



#45 AR-1268-5

R.T.: 10.242 min
Delta R.T.: -0.003 min
Response: 30100
Conc: 1.84 ng/ml

Instrument :
ECD_P
ClientSampleId :



#45 AR-1268-5

R.T.: 0.000 min
Exp R.T. : 9.031 min
Response: 0
Conc: N.D.