

Data Path : Z:\pestpcbsrv\HPCHEM1\ECD\_P\Data\PP021022\  
 Data File : PP043564.D  
 Signal(s) : Signal #1: ECD1A.ch Signal #2: ECD2B.ch  
 Acq On : 10 Feb 2022 17:20  
 Operator : YP\AJ  
 Sample : AR1242ICC750  
 Misc :  
 ALS Vial : 11 Sample Multiplier: 1

Instrument :  
 ECD\_P  
 ClientSampleId :  
 AR1242ICC750

Integration File signal 1: autoint1.e  
 Integration File signal 2: autoint2.e  
 Quant Time: Feb 12 00:06:43 2022  
 Quant Method : Z:\pestpcbsrv\HPCHEM1\ECD\_P\methods\PP021022.M  
 Quant Title : GC EXTRACTABLES  
 QLast Update : Fri Feb 11 04:48:05 2022  
 Response via : Initial Calibration  
 Integrator: ChemStation

Volume Inj. : 2 µl  
 Signal #1 Phase : ZB-MR1 Signal #2 Phase: ZB-MR2  
 Signal #1 Info : 30Mx0.32mmx 0.50µ Signal #2 Info : 30M x 0.32mm x 0.25µm

Compound	RT#1	RT#2	Resp#1	Resp#2	ng/ml	ng/ml
System Monitoring Compounds						
1) SA Tetrachlo...	3.919	3.174	166.8E6	138.0E6	75.457	73.465
2) SA Decachlor...	10.072	8.555	91857039	116.3E6	77.328	71.706
Target Compounds						
3) L1 AR-1016-1	5.174	4.323	40192468	33049248	553.903	539.410
4) L1 AR-1016-2	5.197	4.341	58041898	46361333	550.313	548.727
5) L1 AR-1016-3	5.263	4.527	36587643	25810194	555.663	552.481
6) L1 AR-1016-4	5.369	4.576	30400821	19572859	560.588	523.745
7) L1 AR-1016-5	5.691	4.801	29639136	25875959	564.255	566.429
8) L2 AR-1221-1	4.142	3.401	4961267	4774034	194.870	200.140
9) L2 AR-1221-2	4.239	3.492	7351577	6922234	382.928	383.290
10) L2 AR-1221-3	4.318	3.572	24857362	22184983	432.709	430.045
11) L3 AR-1232-1	4.318	3.572	24857362	22184983	512.186	515.628
12) L3 AR-1232-2	4.884	4.341	31883390	46361333	1345.452	1298.715
13) L3 AR-1232-3	5.197	4.527	58041898	25810194	1348.128	1319.934
14) L3 AR-1232-4	5.369	4.619	30400821	24554597	1392.726	1419.968
15) L3 AR-1232-5	5.472	4.801	23296032	25875959	1444.338	1377.541
16) L4 AR-1242-1	5.174	4.323	40192468	33049248	715.272	677.962
17) L4 AR-1242-2	5.197	4.341	58041898	46361333	701.548	688.518
18) L4 AR-1242-3	5.263	4.527	36587643	25810194	706.872	687.566
19) L4 AR-1242-4	5.369	4.619	30400821	24554597	711.755	680.004
20) L4 AR-1242-5	6.171	5.179	29591333	29305115	685.271	680.755
21) L5 AR-1248-1	5.174	4.323	40192468	33049248	980.362	887.222
22) L5 AR-1248-2	5.472	4.576	23296032	19572859	410.048	400.088
23) L5 AR-1248-3	5.691	4.619	29639136	24554597	444.256	478.506
24) L5 AR-1248-4	6.130	4.801	27832566	25875959	398.365	441.374
25) L5 AR-1248-5	6.171	5.222	29591333	25019903	428.048	436.666
26) L6 AR-1254-1	6.099	5.179	21559718	29305115	285.346	335.558
27) L6 AR-1254-2	6.343	5.339	24992859	7982651	222.815	104.653 #
28) L6 AR-1254-3	6.741	5.771	10674663	10454983	92.252	85.306
29) L6 AR-1254-4	7.055	6.021	7630479	8047470	95.580	101.964
30) L6 AR-1254-5	7.516	6.474	2295689	2371462	26.768	20.506
31) L7 AR-1260-1	6.922	5.926	1514764	4180509	18.088	52.276 #
32) L7 AR-1260-2	7.205	6.119	694010	1402829	7.667	14.365 #
33) L7 AR-1260-3	7.603	6.281	139576	1328862	1.925	14.556 #
34) L7 AR-1260-4	7.831f	6.797	1353937	94996	15.770	1.174 #
35) L7 AR-1260-5	8.186	7.061	216353	219816	1.396	1.189
36) L8 AR-1262-1	7.603	6.497f	139576	469204	1.414	4.268 #
37) L8 AR-1262-2	8.186	6.797	216353	94996	1.340	0.931 #
38) L8 AR-1262-3	8.522	7.374	59098	63668	0.540	0.747 #
39) L8 AR-1262-4	8.616	7.437	113276	313008	2.362	2.015
40) L8 AR-1262-5	9.291	7.983	17868	45744	0.321	0.588 #
41) L9 AR-1268-1	8.522	7.374	59098	63668	0.303	0.251

Data Path : Z:\pestpcbsrv\HPCHEM1\ECD\_P\Data\PP021022\  
 Data File : PP043564.D  
 Signal(s) : Signal #1: ECD1A.ch Signal #2: ECD2B.ch  
 Acq On : 10 Feb 2022 17:20  
 Operator : YP\AJ  
 Sample : AR1242ICC750  
 Misc :  
 ALS Vial : 11 Sample Multiplier: 1

Instrument :  
 ECD\_P  
 ClientSampleId :  
 AR1242ICC750

Integration File signal 1: autoint1.e  
 Integration File signal 2: autoint2.e  
 Quant Time: Feb 12 00:06:43 2022  
 Quant Method : Z:\pestpcbsrv\HPCHEM1\ECD\_P\methods\PP021022.M  
 Quant Title : GC EXTRACTABLES  
 QLast Update : Fri Feb 11 04:48:05 2022  
 Response via : Initial Calibration  
 Integrator: ChemStation

Volume Inj. : 2 µl  
 Signal #1 Phase : ZB-MR1 Signal #2 Phase: ZB-MR2  
 Signal #1 Info : 30Mx0.32mmx 0.50µ Signal #2 Info : 30M x 0.32mm x 0.25µm

	Compound	RT#1	RT#2	Resp#1	Resp#2	ng/ml	ng/ml
42)	L9 AR-1268-2	8.616	7.437	113276	313008	0.647	1.385 #
43)	L9 AR-1268-3	8.861	7.664	169448	260126	1.098	1.336
44)	L9 AR-1268-4	9.291	7.983	17868	45744	0.286	0.509 #
45)	L9 AR-1268-5	9.728	8.291	886217	814048	1.950	1.355 #

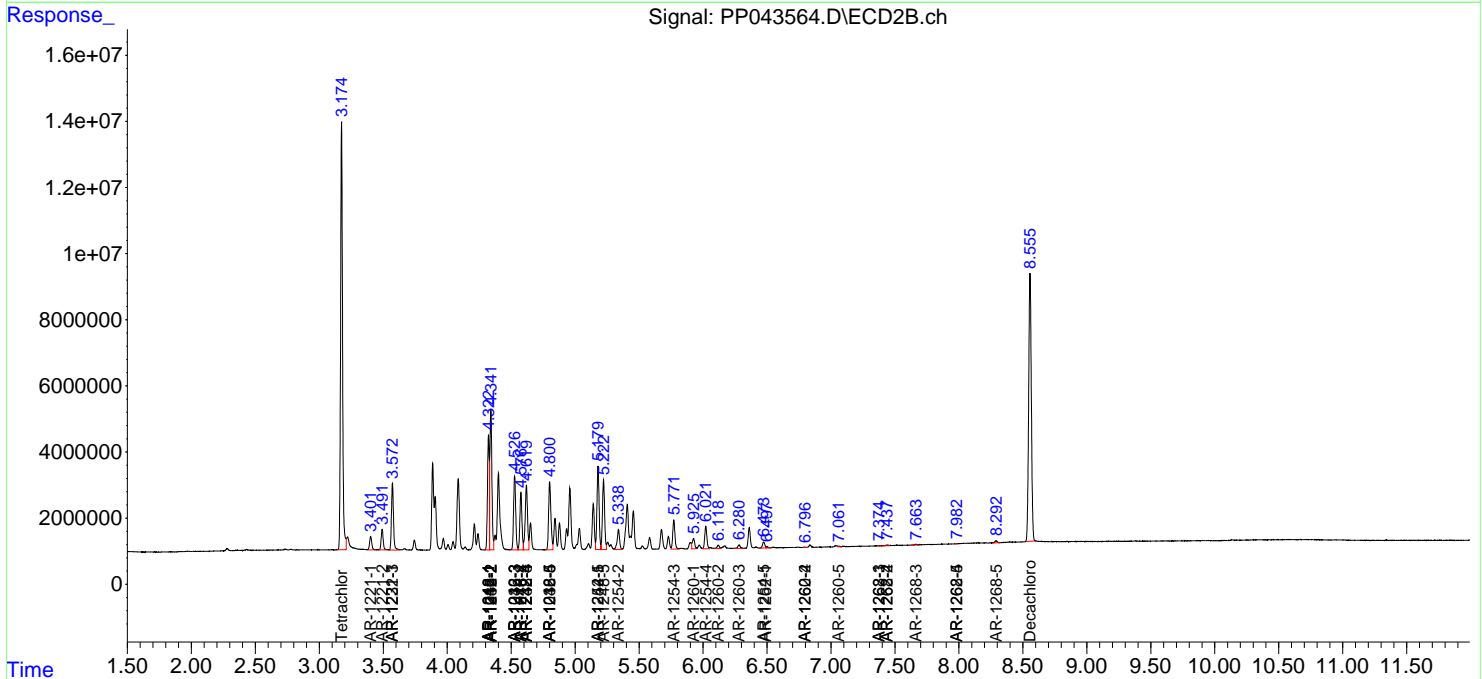
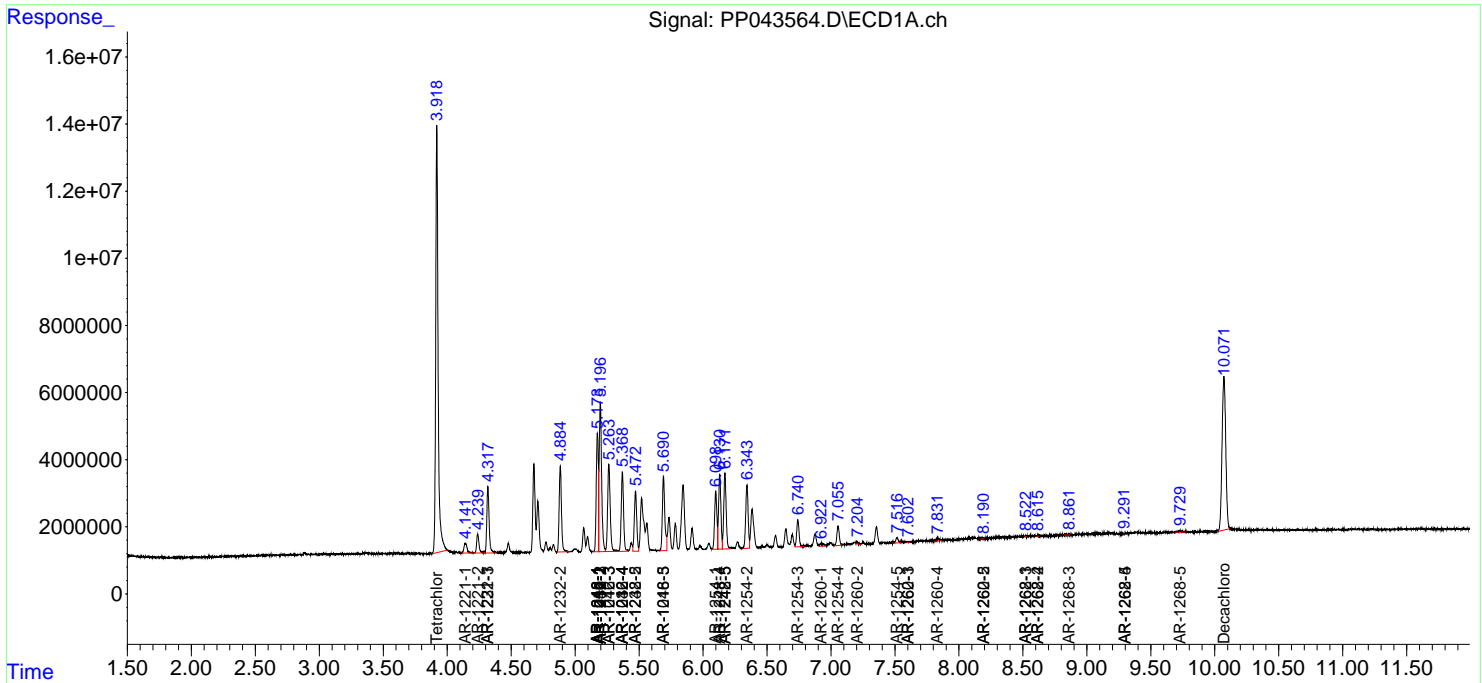
(f)=RT Delta > 1/2 Window (#)=Amounts differ by > 25% (m)=manual int.

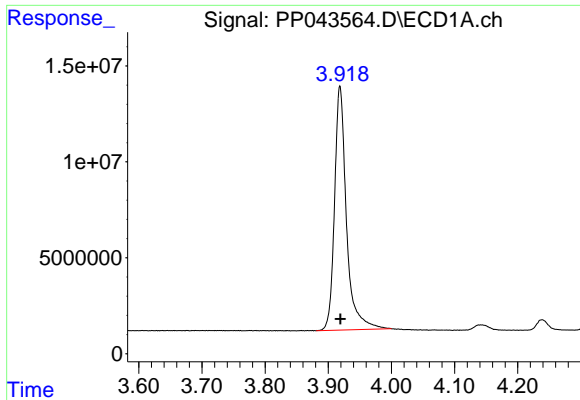
Data Path : Z:\pestpcbsrv\HPCHEM1\ECD\_P\Data\PP021022\  
 Data File : PP043564.D  
 Signal(s) : Signal #1: ECD1A.ch Signal #2: ECD2B.ch  
 Acq On : 10 Feb 2022 17:20  
 Operator : YP\AJ  
 Sample : AR1242ICC750  
 Misc :  
 ALS Vial : 11 Sample Multiplier: 1

Instrument :  
 ECD\_P  
 ClientSampleId :  
 AR1242ICC750

Integration File signal 1: autoint1.e  
 Integration File signal 2: autoint2.e  
 Quant Time: Feb 12 00:06:43 2022  
 Quant Method : Z:\pestpcbsrv\HPCHEM1\ECD\_P\methods\PP021022.M  
 Quant Title : GC EXTRACTABLES  
 QLast Update : Fri Feb 11 04:48:05 2022  
 Response via : Initial Calibration  
 Integrator: ChemStation

Volume Inj. : 2 µl  
 Signal #1 Phase : ZB-MR1 Signal #2 Phase: ZB-MR2  
 Signal #1 Info : 30Mx0.32mmx 0.50µ Signal #2 Info : 30M x 0.32mm x 0.25µm

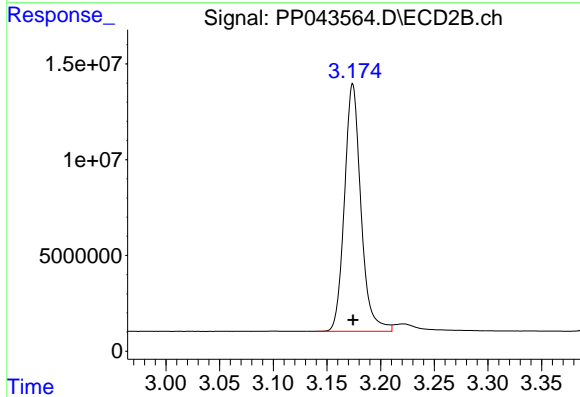




#1 Tetrachloro-m-xylene

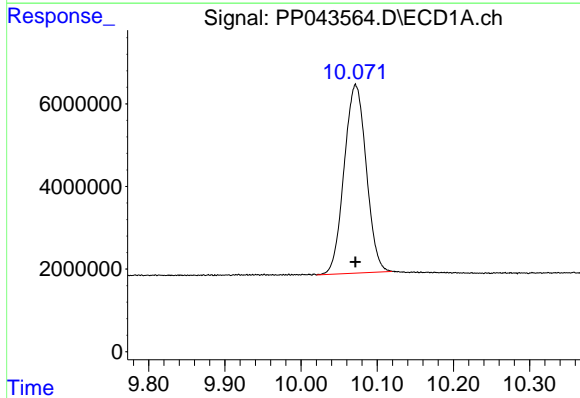
R.T.: 3.919 min  
 Delta R.T.: 0.000 min  
 Response: 166838726  
 Conc: 75.46 ng/ml

Instrument :  
 ECD\_P  
 ClientSampleId :  
 AR1242ICC750



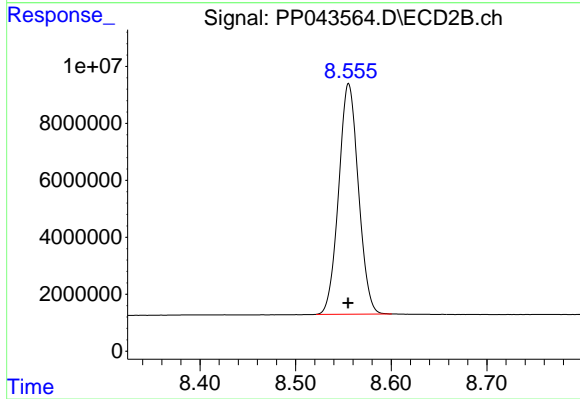
#1 Tetrachloro-m-xylene

R.T.: 3.174 min  
 Delta R.T.: 0.000 min  
 Response: 137986605  
 Conc: 73.46 ng/ml



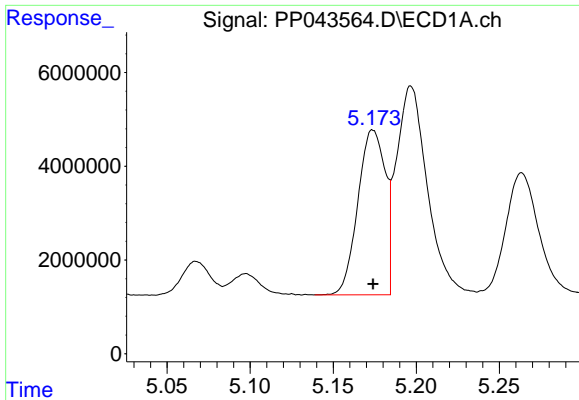
#2 Decachlorobiphenyl

R.T.: 10.072 min  
 Delta R.T.: 0.000 min  
 Response: 91857039  
 Conc: 77.33 ng/ml



#2 Decachlorobiphenyl

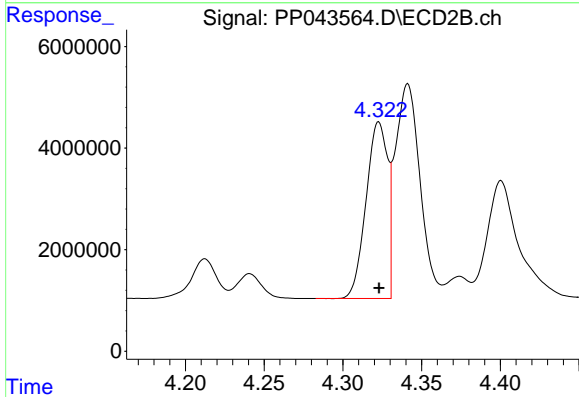
R.T.: 8.555 min  
 Delta R.T.: 0.000 min  
 Response: 116335027  
 Conc: 71.71 ng/ml



#3 AR-1016-1

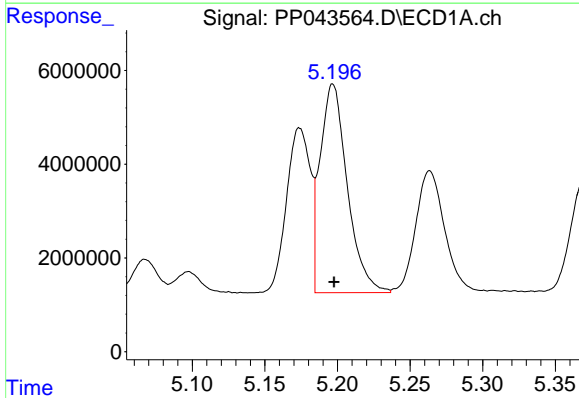
R.T.: 5.174 min  
 Delta R.T.: 0.000 min  
 Response: 40192468  
 Conc: 553.90 ng/ml

Instrument :  
 ECD\_P  
 ClientSampleId :  
 AR1242ICC750



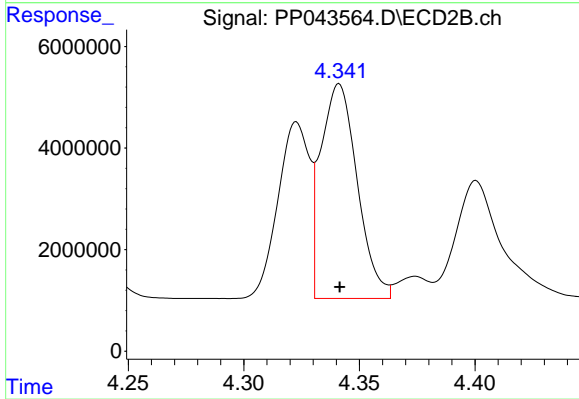
#3 AR-1016-1

R.T.: 4.323 min  
 Delta R.T.: 0.000 min  
 Response: 33049248  
 Conc: 539.41 ng/ml



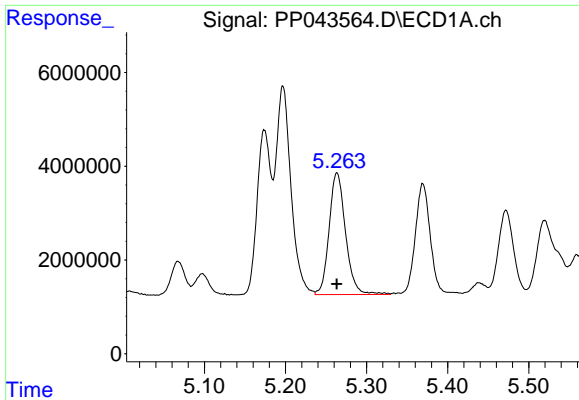
#4 AR-1016-2

R.T.: 5.197 min  
 Delta R.T.: 0.000 min  
 Response: 58041898  
 Conc: 550.31 ng/ml



#4 AR-1016-2

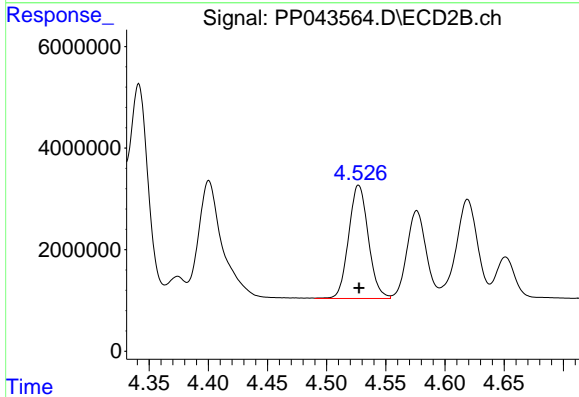
R.T.: 4.341 min  
 Delta R.T.: 0.000 min  
 Response: 46361333  
 Conc: 548.73 ng/ml



#5 AR-1016-3

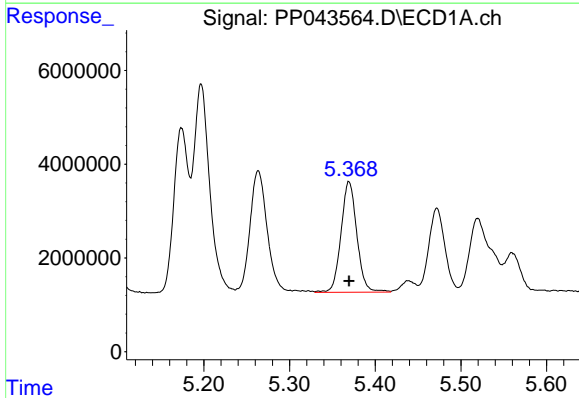
R.T.: 5.263 min  
 Delta R.T.: 0.000 min  
 Response: 36587643  
 Conc: 555.66 ng/ml

Instrument :  
 ECD\_P  
 ClientSampleId :  
 AR1242ICC750



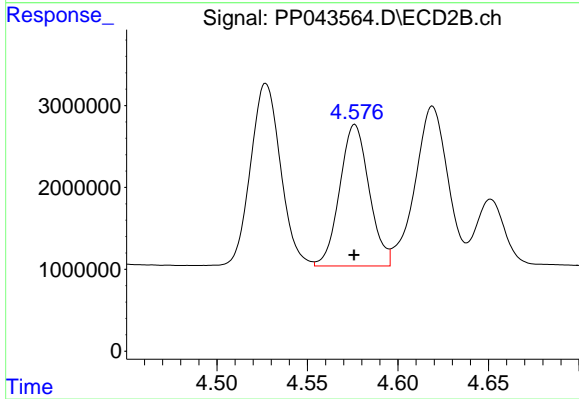
#5 AR-1016-3

R.T.: 4.527 min  
 Delta R.T.: 0.000 min  
 Response: 25810194  
 Conc: 552.48 ng/ml



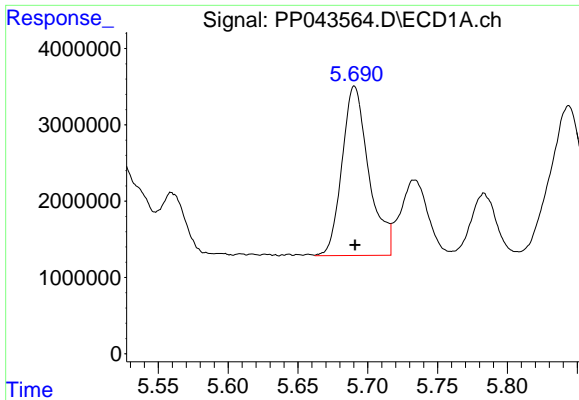
#6 AR-1016-4

R.T.: 5.369 min  
 Delta R.T.: 0.000 min  
 Response: 30400821  
 Conc: 560.59 ng/ml



#6 AR-1016-4

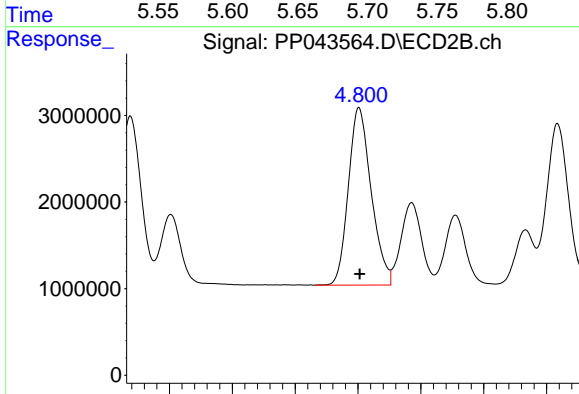
R.T.: 4.576 min  
 Delta R.T.: 0.000 min  
 Response: 19572859  
 Conc: 523.75 ng/ml



#7 AR-1016-5

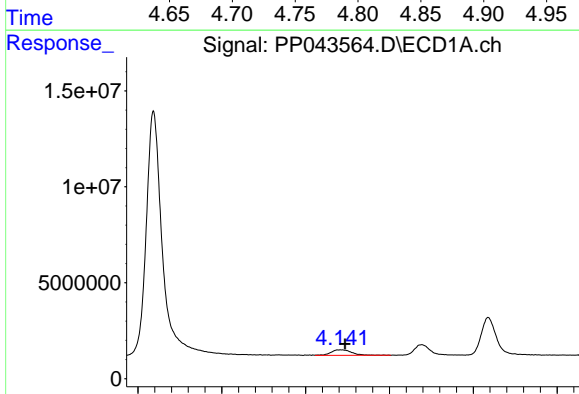
R.T.: 5.691 min  
 Delta R.T.: 0.000 min  
 Response: 29639136  
 Conc: 564.26 ng/ml

Instrument :  
 ECD\_P  
 ClientSampleId :  
 AR1242ICC750



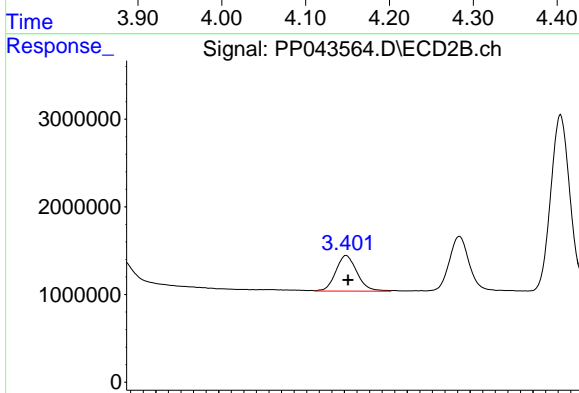
#7 AR-1016-5

R.T.: 4.801 min  
 Delta R.T.: 0.000 min  
 Response: 25875959  
 Conc: 566.43 ng/ml



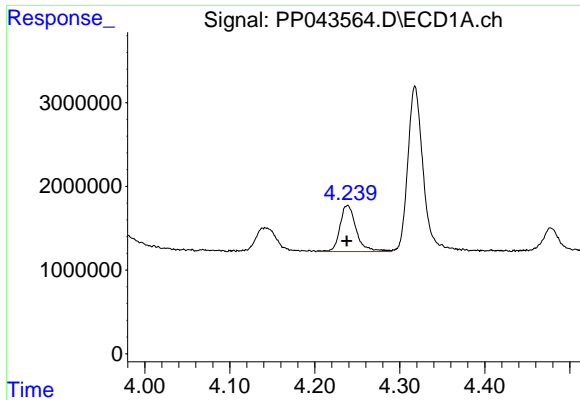
#8 AR-1221-1

R.T.: 4.142 min  
 Delta R.T.: -0.005 min  
 Response: 4961267  
 Conc: 194.87 ng/ml



#8 AR-1221-1

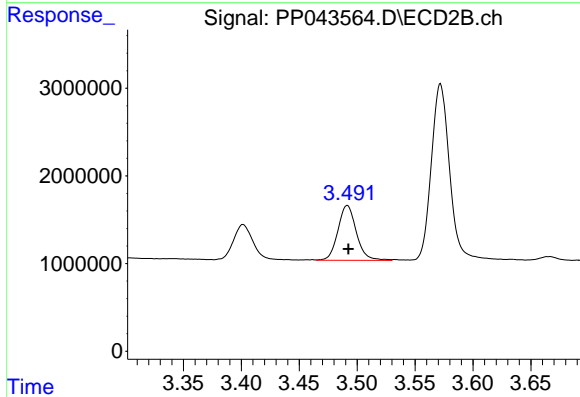
R.T.: 3.401 min  
 Delta R.T.: -0.002 min  
 Response: 4774034  
 Conc: 200.14 ng/ml



#9 AR-1221-2

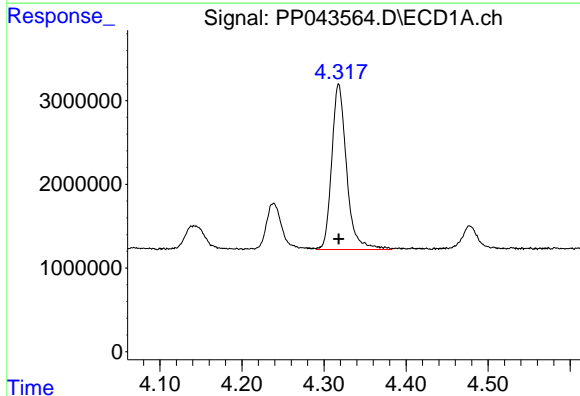
R.T.: 4.239 min  
 Delta R.T.: 0.000 min  
 Response: 7351577  
 Conc: 382.93 ng/ml

Instrument :  
 ECD\_P  
 ClientSampleId :  
 AR1242ICC750



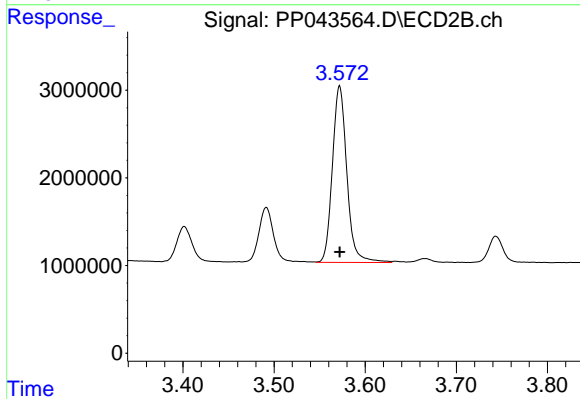
#9 AR-1221-2

R.T.: 3.492 min  
 Delta R.T.: 0.000 min  
 Response: 6922234  
 Conc: 383.29 ng/ml



#10 AR-1221-3

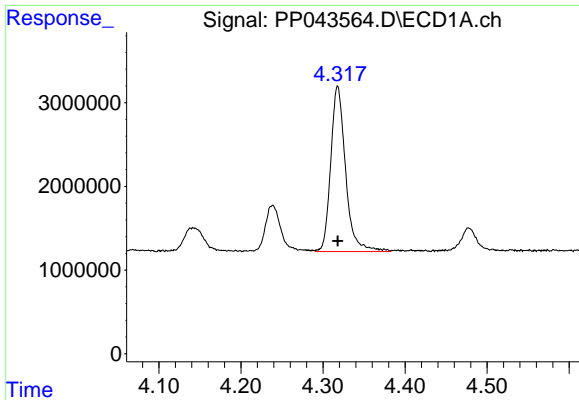
R.T.: 4.318 min  
 Delta R.T.: 0.000 min  
 Response: 24857362  
 Conc: 432.71 ng/ml



#10 AR-1221-3

R.T.: 3.572 min  
 Delta R.T.: 0.000 min  
 Response: 22184983  
 Conc: 430.04 ng/ml

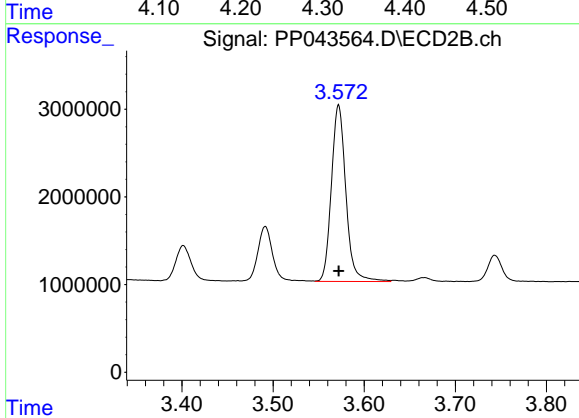




#11 AR-1232-1

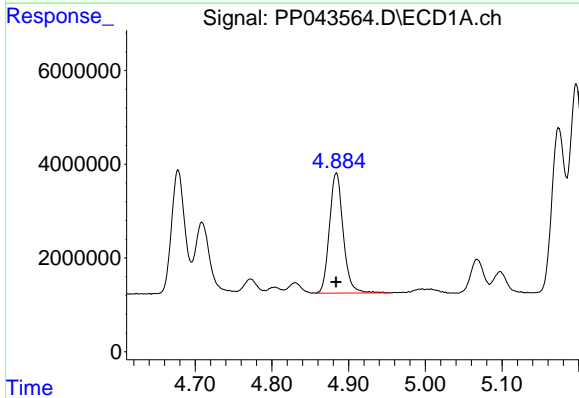
R.T.: 4.318 min  
Delta R.T.: 0.000 min  
Response: 24857362  
Conc: 512.19 ng/ml

Instrument :  
ECD\_P  
ClientSampleId :  
AR1242ICC750



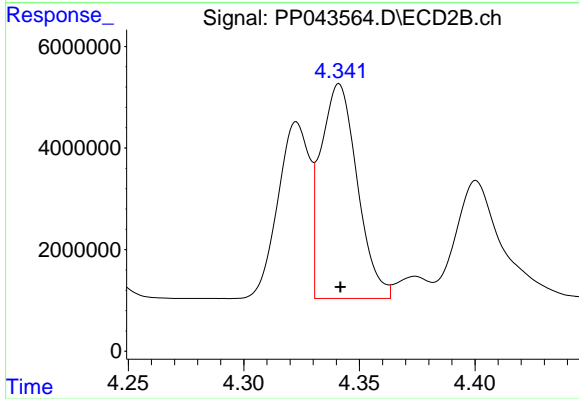
#11 AR-1232-1

R.T.: 3.572 min  
Delta R.T.: 0.000 min  
Response: 22184983  
Conc: 515.63 ng/ml



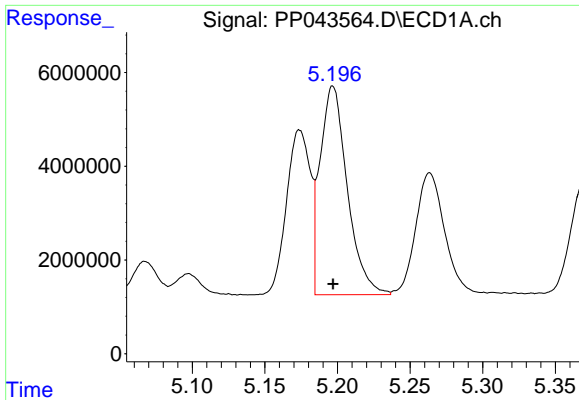
#12 AR-1232-2

R.T.: 4.884 min  
Delta R.T.: 0.000 min  
Response: 31883390  
Conc: 1345.45 ng/ml



#12 AR-1232-2

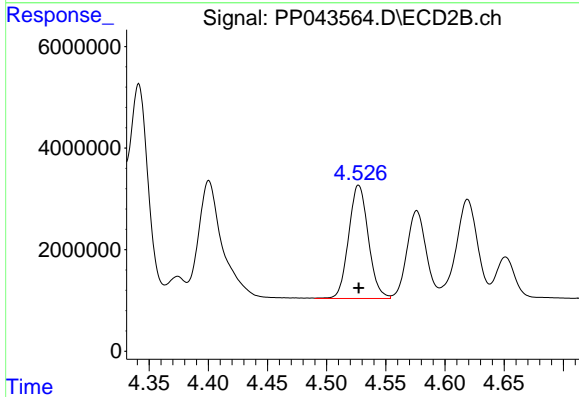
R.T.: 4.341 min  
Delta R.T.: 0.000 min  
Response: 46361333  
Conc: 1298.72 ng/ml



#13 AR-1232-3

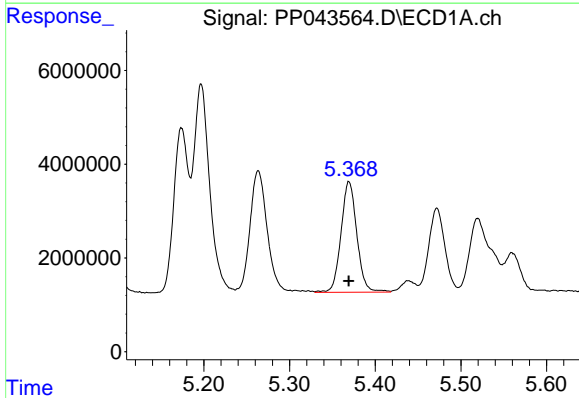
R.T.: 5.197 min  
 Delta R.T.: 0.000 min  
 Response: 58041898  
 Conc: 1348.13 ng/ml

Instrument :  
 ECD\_P  
 ClientSampleId :  
 AR1242ICC750



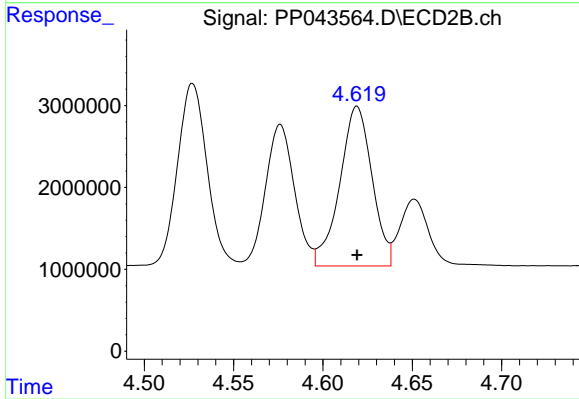
#13 AR-1232-3

R.T.: 4.527 min  
 Delta R.T.: 0.000 min  
 Response: 25810194  
 Conc: 1319.93 ng/ml



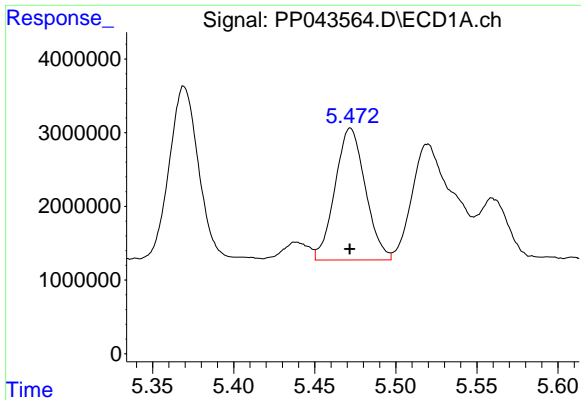
#14 AR-1232-4

R.T.: 5.369 min  
 Delta R.T.: 0.000 min  
 Response: 30400821  
 Conc: 1392.73 ng/ml



#14 AR-1232-4

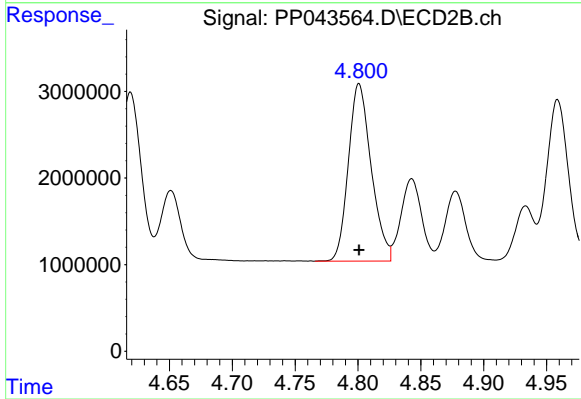
R.T.: 4.619 min  
 Delta R.T.: 0.000 min  
 Response: 24554597  
 Conc: 1419.97 ng/ml



#15 AR-1232-5

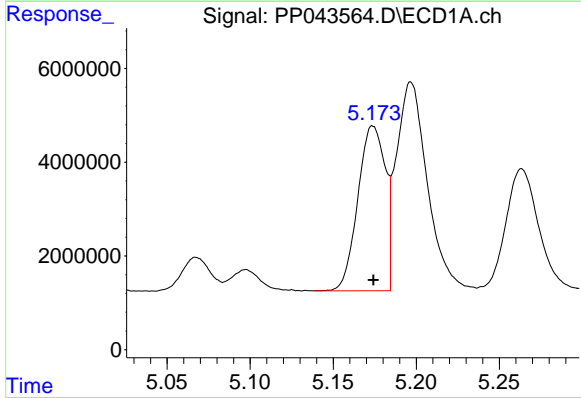
R.T.: 5.472 min  
 Delta R.T.: 0.000 min  
 Response: 23296032  
 Conc: 1444.34 ng/ml

Instrument :  
 ECD\_P  
 ClientSampleId :  
 AR1242ICC750



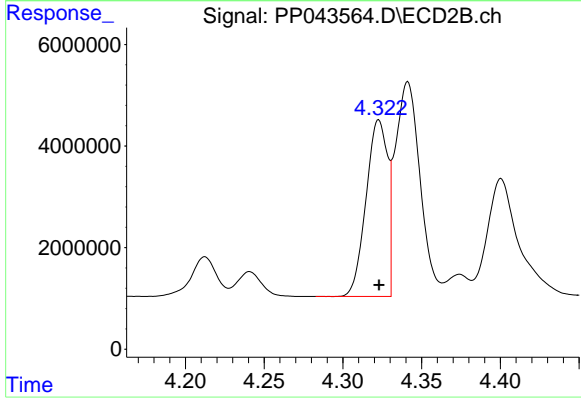
#15 AR-1232-5

R.T.: 4.801 min  
 Delta R.T.: 0.000 min  
 Response: 25875959  
 Conc: 1377.54 ng/ml



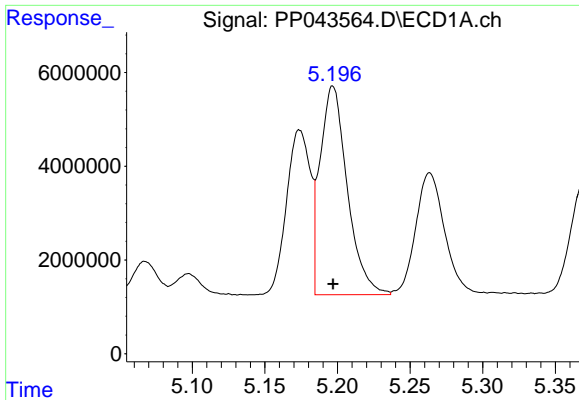
#16 AR-1242-1

R.T.: 5.174 min  
 Delta R.T.: 0.000 min  
 Response: 40192468  
 Conc: 715.27 ng/ml



#16 AR-1242-1

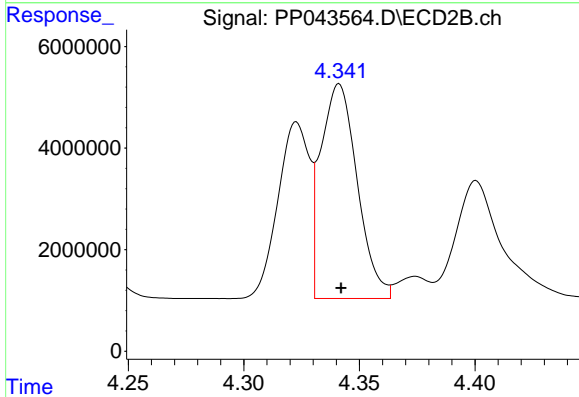
R.T.: 4.323 min  
 Delta R.T.: 0.000 min  
 Response: 33049248  
 Conc: 677.96 ng/ml



#17 AR-1242-2

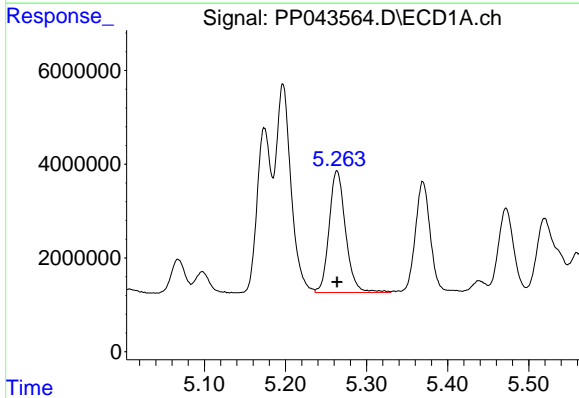
R.T.: 5.197 min  
 Delta R.T.: 0.000 min  
 Response: 58041898  
 Conc: 701.55 ng/ml

Instrument :  
 ECD\_P  
 ClientSampleId :  
 AR1242ICC750



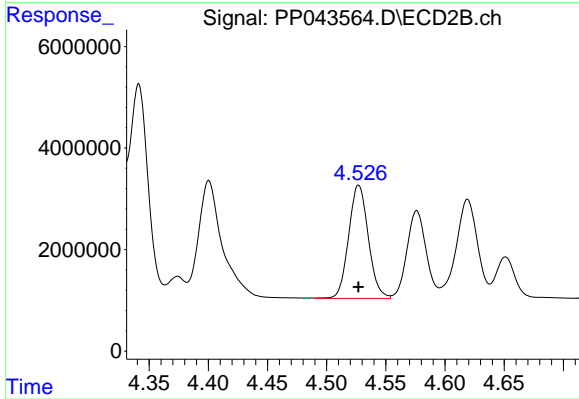
#17 AR-1242-2

R.T.: 4.341 min  
 Delta R.T.: 0.000 min  
 Response: 46361333  
 Conc: 688.52 ng/ml



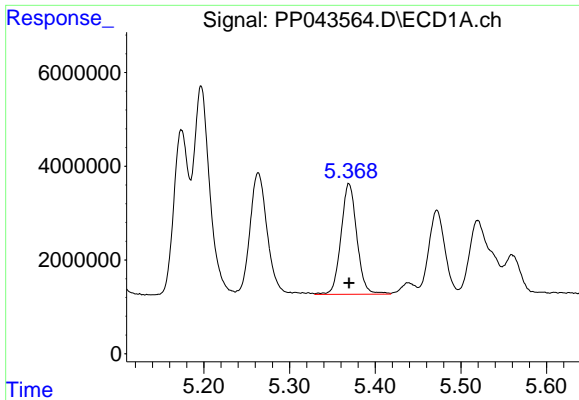
#18 AR-1242-3

R.T.: 5.263 min  
 Delta R.T.: 0.000 min  
 Response: 36587643  
 Conc: 706.87 ng/ml



#18 AR-1242-3

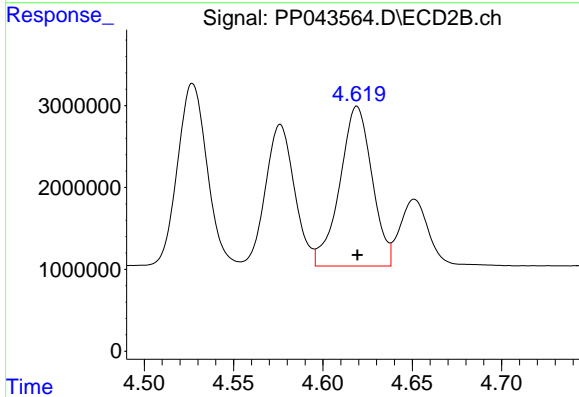
R.T.: 4.527 min  
 Delta R.T.: 0.000 min  
 Response: 25810194  
 Conc: 687.57 ng/ml



#19 AR-1242-4

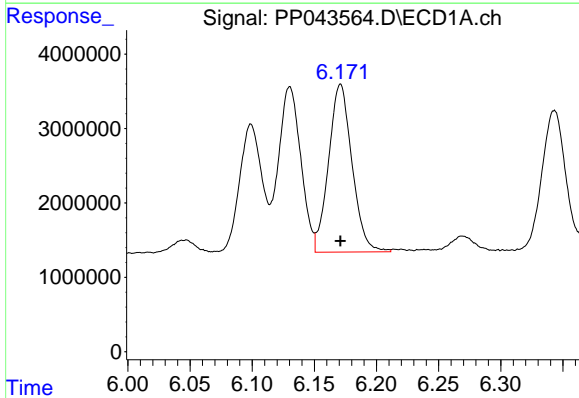
R.T.: 5.369 min  
 Delta R.T.: 0.000 min  
 Response: 30400821  
 Conc: 711.76 ng/ml

Instrument :  
 ECD\_P  
 ClientSampleId :  
 AR1242ICC750



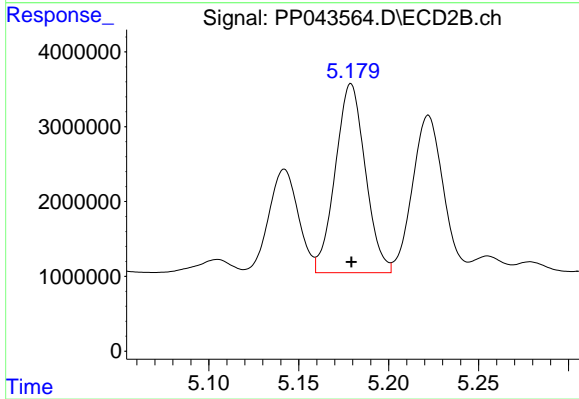
#19 AR-1242-4

R.T.: 4.619 min  
 Delta R.T.: 0.000 min  
 Response: 24554597  
 Conc: 680.00 ng/ml



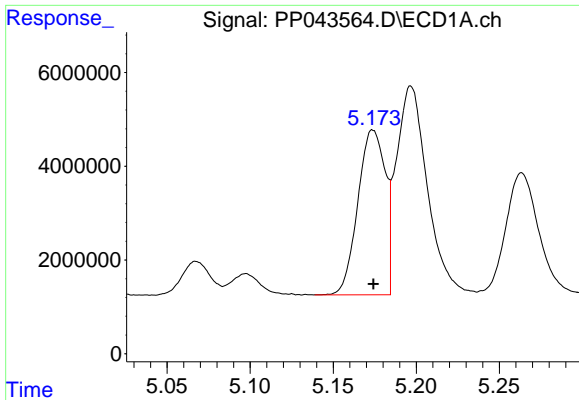
#20 AR-1242-5

R.T.: 6.171 min  
 Delta R.T.: 0.000 min  
 Response: 29591333  
 Conc: 685.27 ng/ml



#20 AR-1242-5

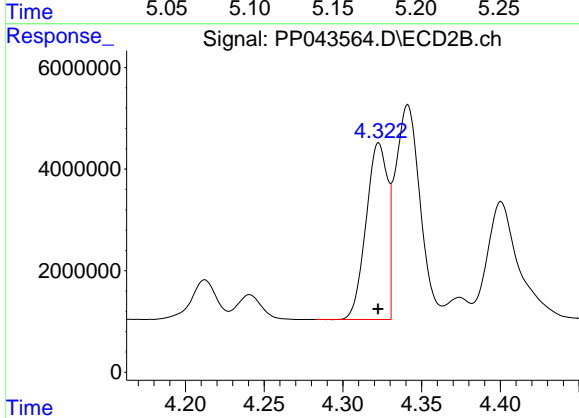
R.T.: 5.179 min  
 Delta R.T.: 0.000 min  
 Response: 29305115  
 Conc: 680.76 ng/ml



#21 AR-1248-1

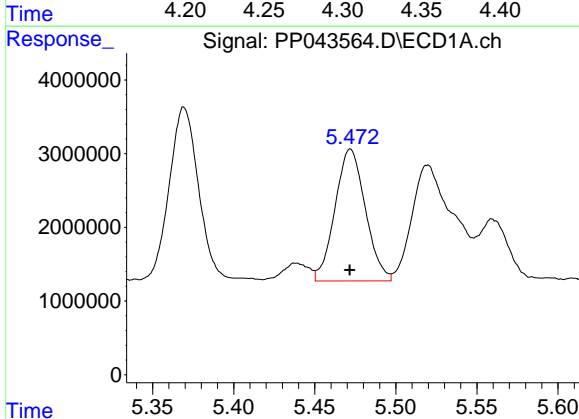
R.T.: 5.174 min  
 Delta R.T.: 0.000 min  
 Response: 40192468  
 Conc: 980.36 ng/ml

Instrument :  
 ECD\_P  
 ClientSampleId :  
 AR1242ICC750



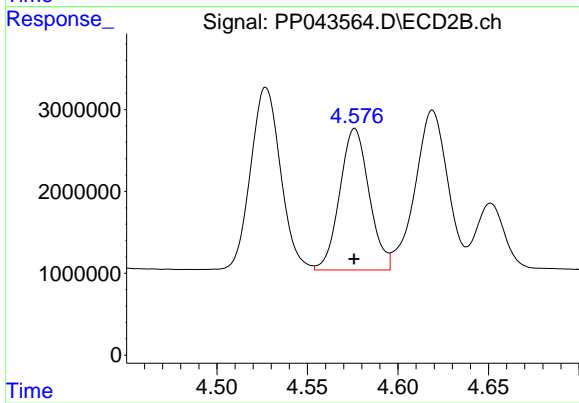
#21 AR-1248-1

R.T.: 4.323 min  
 Delta R.T.: 0.000 min  
 Response: 33049248  
 Conc: 887.22 ng/ml



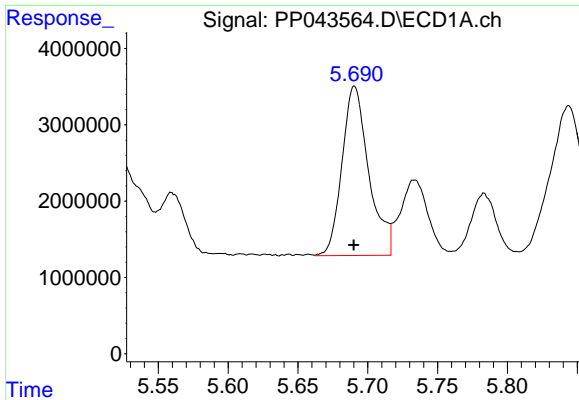
#22 AR-1248-2

R.T.: 5.472 min  
 Delta R.T.: 0.000 min  
 Response: 23296032  
 Conc: 410.05 ng/ml



#22 AR-1248-2

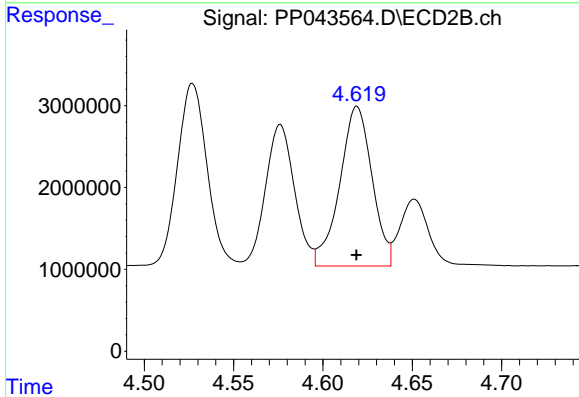
R.T.: 4.576 min  
 Delta R.T.: 0.000 min  
 Response: 19572859  
 Conc: 400.09 ng/ml



#23 AR-1248-3

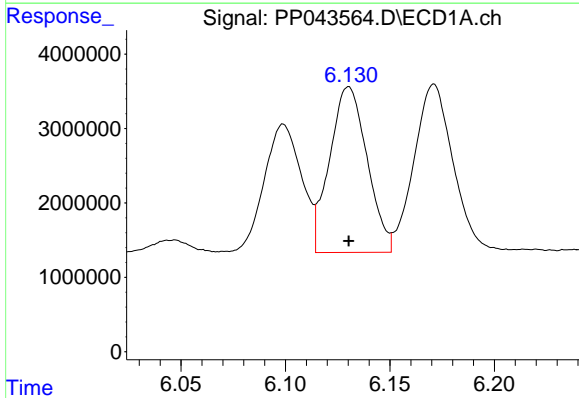
R.T.: 5.691 min  
 Delta R.T.: 0.000 min  
 Response: 29639136  
 Conc: 444.26 ng/ml

Instrument :  
 ECD\_P  
 ClientSampleId :  
 AR1242ICC750



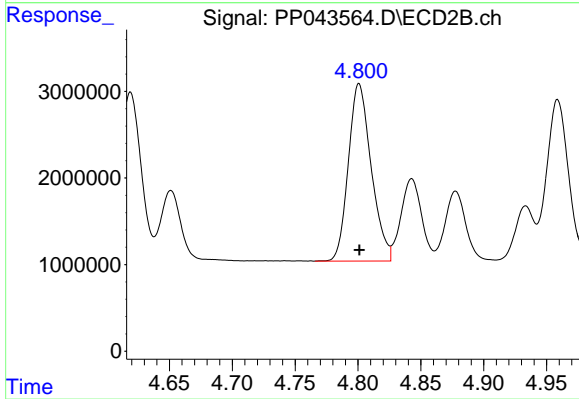
#23 AR-1248-3

R.T.: 4.619 min  
 Delta R.T.: 0.000 min  
 Response: 24554597  
 Conc: 478.51 ng/ml



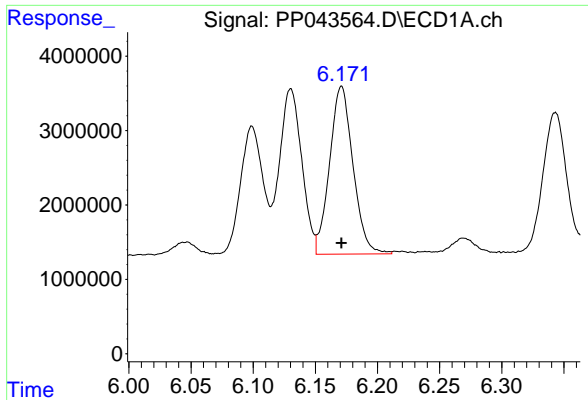
#24 AR-1248-4

R.T.: 6.130 min  
 Delta R.T.: 0.000 min  
 Response: 27832566  
 Conc: 398.37 ng/ml



#24 AR-1248-4

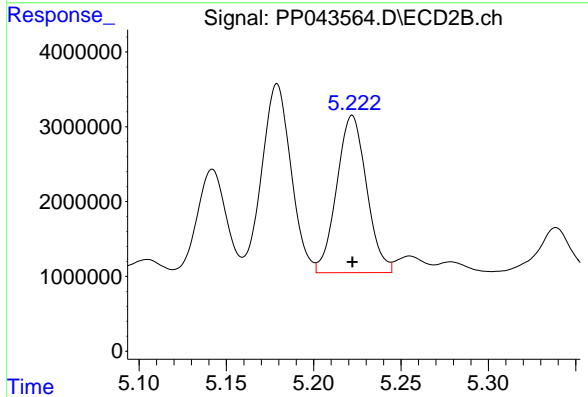
R.T.: 4.801 min  
 Delta R.T.: 0.000 min  
 Response: 25875959  
 Conc: 441.37 ng/ml



#25 AR-1248-5

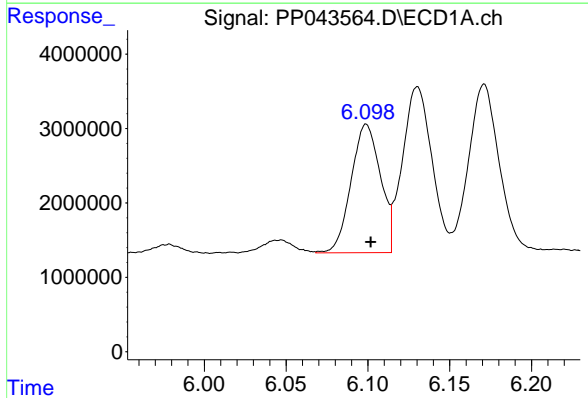
R.T.: 6.171 min  
 Delta R.T.: 0.000 min  
 Response: 29591333  
 Conc: 428.05 ng/ml

Instrument :  
 ECD\_P  
 ClientSampleId :  
 AR1242ICC750



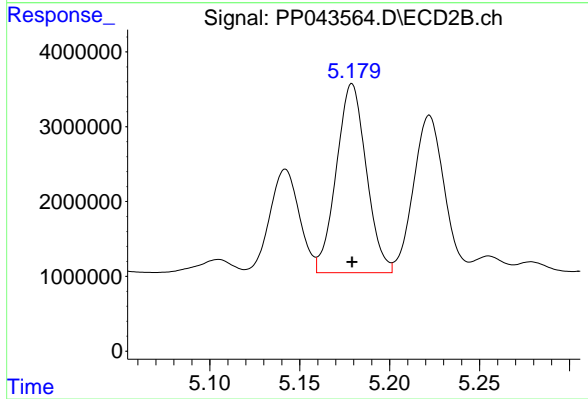
#25 AR-1248-5

R.T.: 5.222 min  
 Delta R.T.: 0.000 min  
 Response: 25019903  
 Conc: 436.67 ng/ml



#26 AR-1254-1

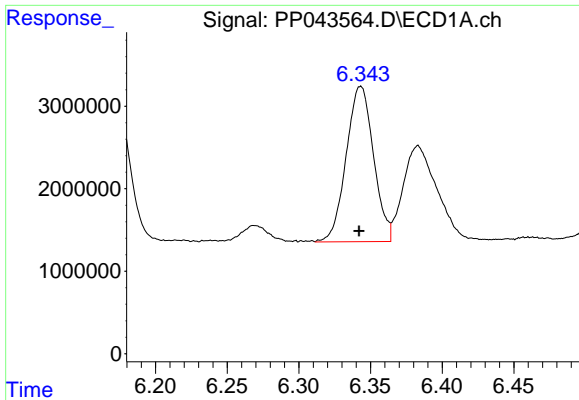
R.T.: 6.099 min  
 Delta R.T.: -0.003 min  
 Response: 21559718  
 Conc: 285.35 ng/ml



#26 AR-1254-1

R.T.: 5.179 min  
 Delta R.T.: 0.000 min  
 Response: 29305115  
 Conc: 335.56 ng/ml

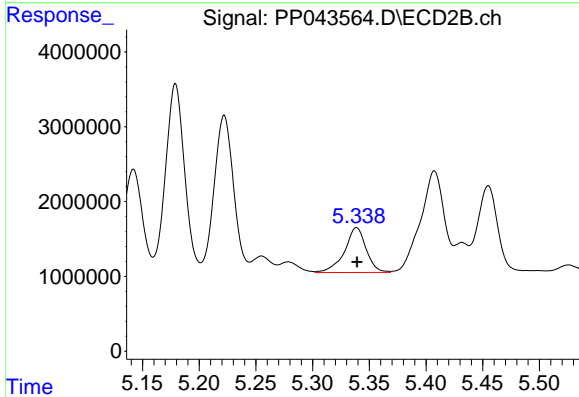




#27 AR-1254-2

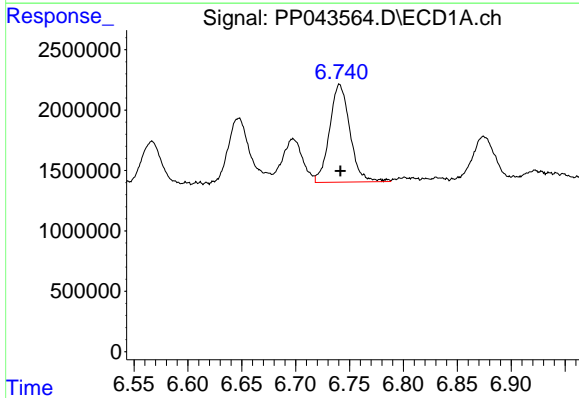
R.T.: 6.343 min  
 Delta R.T.: 0.001 min  
 Response: 24992859  
 Conc: 222.82 ng/ml

Instrument :  
 ECD\_P  
 ClientSampleId :  
 AR1242ICC750



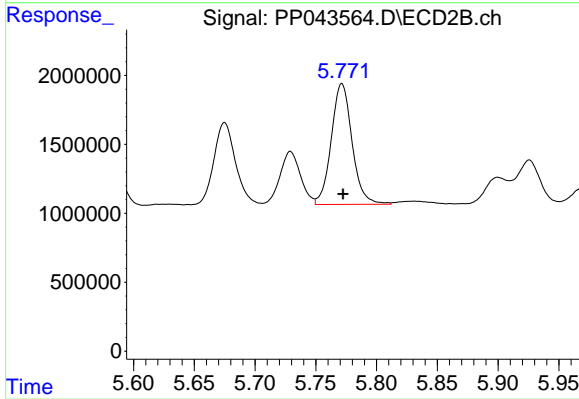
#27 AR-1254-2

R.T.: 5.339 min  
 Delta R.T.: 0.000 min  
 Response: 7982651  
 Conc: 104.65 ng/ml



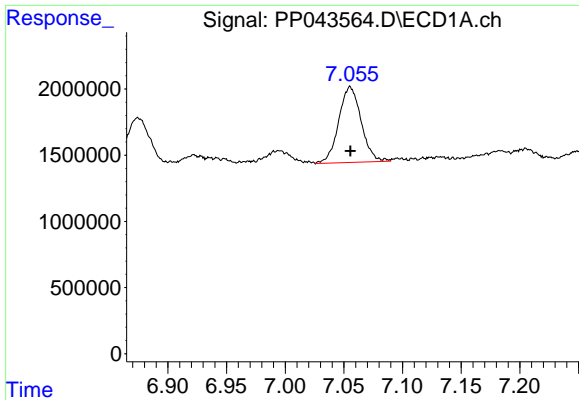
#28 AR-1254-3

R.T.: 6.741 min  
 Delta R.T.: 0.000 min  
 Response: 10674663  
 Conc: 92.25 ng/ml



#28 AR-1254-3

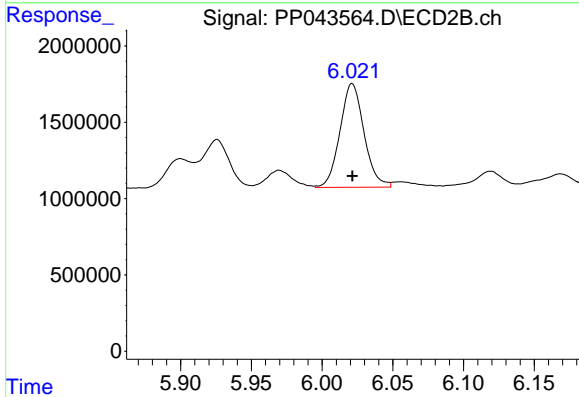
R.T.: 5.771 min  
 Delta R.T.: 0.000 min  
 Response: 10454983  
 Conc: 85.31 ng/ml



#29 AR-1254-4

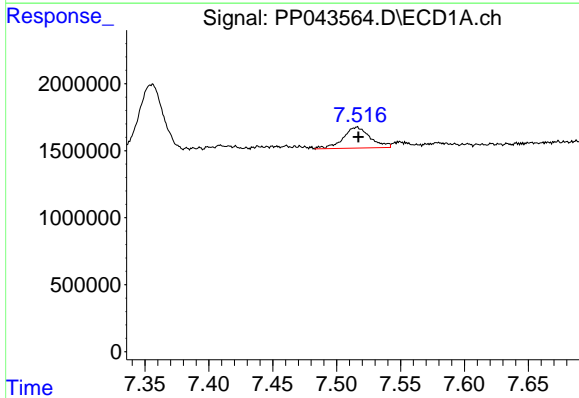
R.T.: 7.055 min  
 Delta R.T.: 0.000 min  
 Response: 7630479  
 Conc: 95.58 ng/ml

Instrument :  
 ECD\_P  
 ClientSampleId :  
 AR1242ICC750



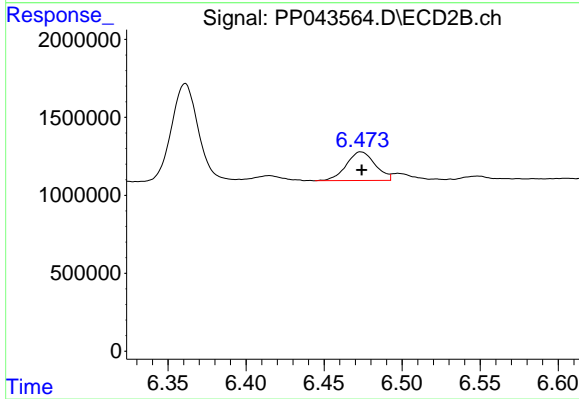
#29 AR-1254-4

R.T.: 6.021 min  
 Delta R.T.: 0.000 min  
 Response: 8047470  
 Conc: 101.96 ng/ml



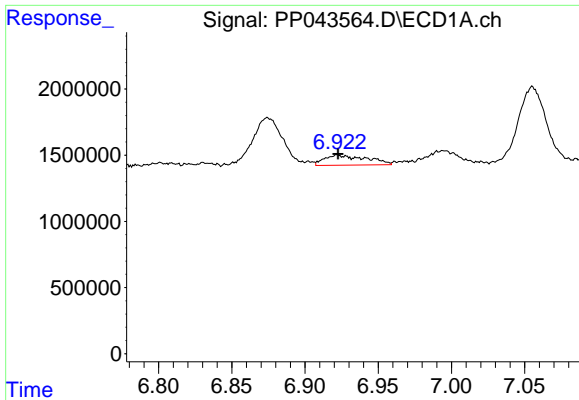
#30 AR-1254-5

R.T.: 7.516 min  
 Delta R.T.: -0.001 min  
 Response: 2295689  
 Conc: 26.77 ng/ml



#30 AR-1254-5

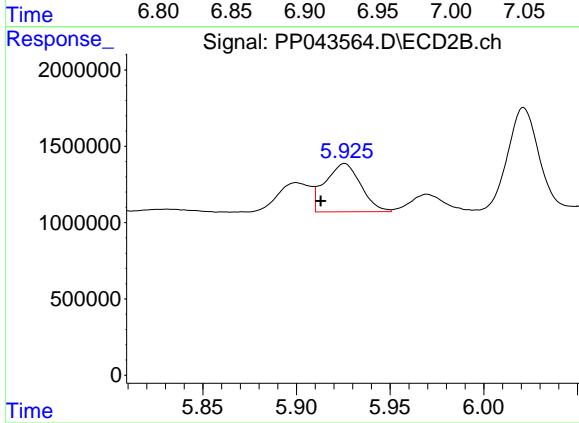
R.T.: 6.474 min  
 Delta R.T.: 0.000 min  
 Response: 2371462  
 Conc: 20.51 ng/ml



#31 AR-1260-1

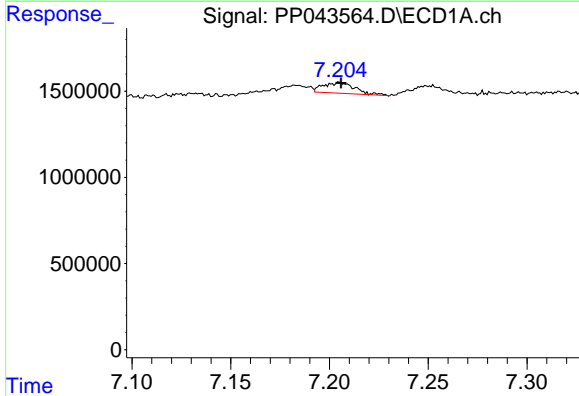
R.T.: 6.922 min  
 Delta R.T.: 0.000 min  
 Response: 1514764  
 Conc: 18.09 ng/ml

Instrument :  
 ECD\_P  
 ClientSampleId :  
 AR1242ICC750



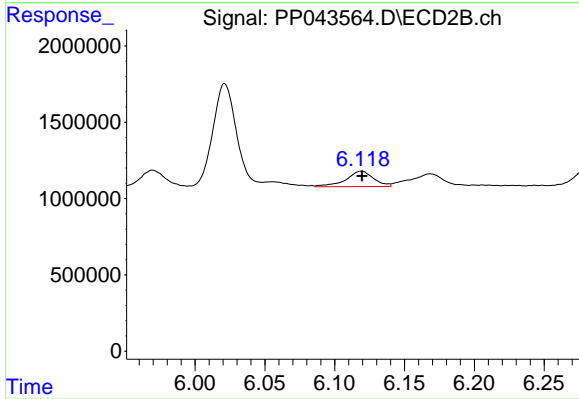
#31 AR-1260-1

R.T.: 5.926 min  
 Delta R.T.: 0.013 min  
 Response: 4180509  
 Conc: 52.28 ng/ml



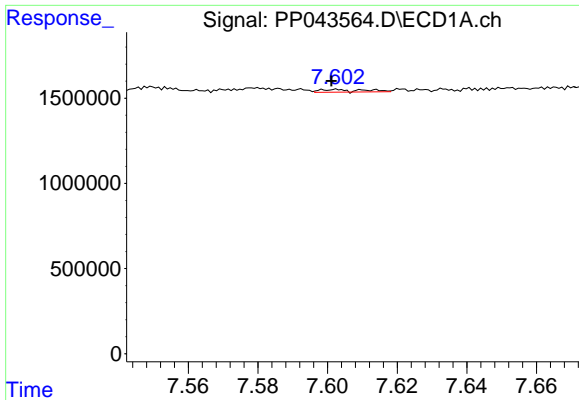
#32 AR-1260-2

R.T.: 7.205 min  
 Delta R.T.: 0.000 min  
 Response: 694010  
 Conc: 7.67 ng/ml



#32 AR-1260-2

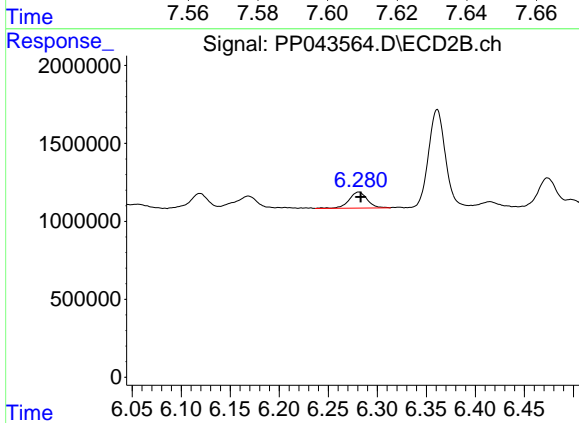
R.T.: 6.119 min  
 Delta R.T.: 0.000 min  
 Response: 1402829  
 Conc: 14.37 ng/ml



#33 AR-1260-3

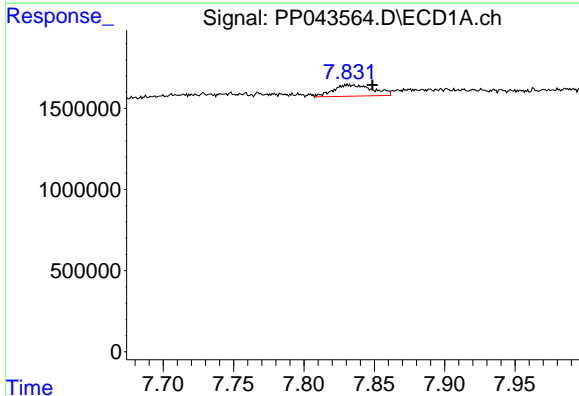
R.T.: 7.603 min  
 Delta R.T.: 0.002 min  
 Response: 139576  
 Conc: 1.93 ng/ml

Instrument :  
 ECD\_P  
 ClientSampleId :  
 AR1242ICC750



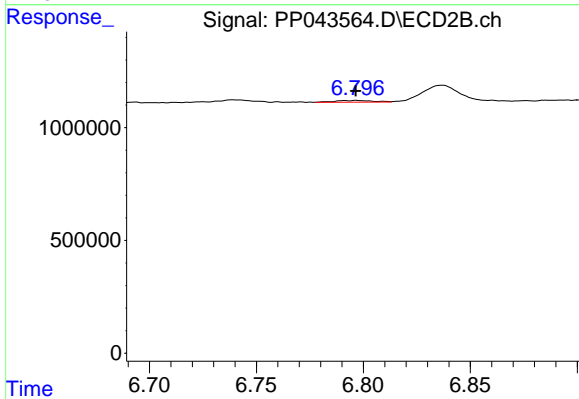
#33 AR-1260-3

R.T.: 6.281 min  
 Delta R.T.: -0.002 min  
 Response: 1328862  
 Conc: 14.56 ng/ml



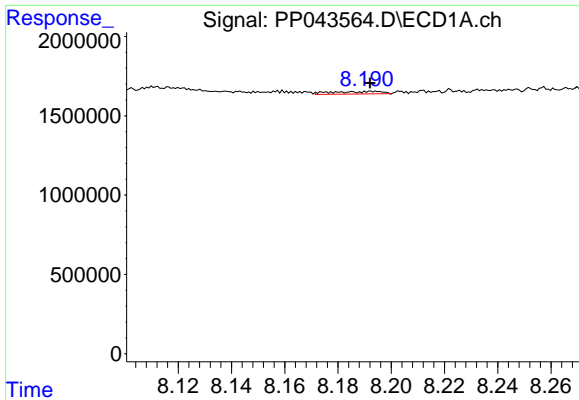
#34 AR-1260-4

R.T.: 7.831 min  
 Delta R.T.: -0.018 min  
 Response: 1353937  
 Conc: 15.77 ng/ml



#34 AR-1260-4

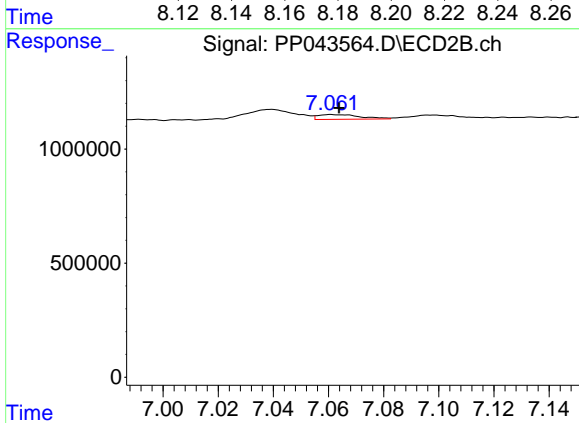
R.T.: 6.797 min  
 Delta R.T.: 0.000 min  
 Response: 94996  
 Conc: 1.17 ng/ml



#35 AR-1260-5

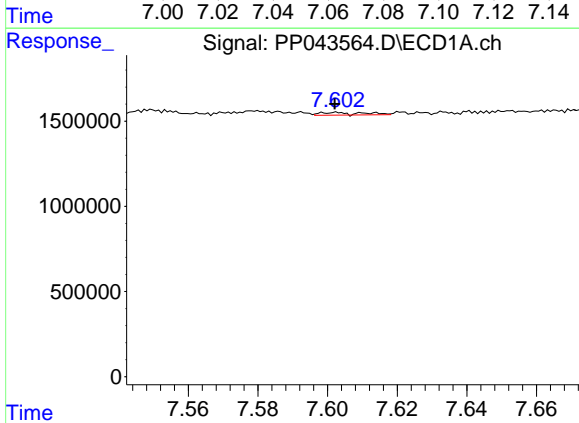
R.T.: 8.186 min  
 Delta R.T.: -0.006 min  
 Response: 216353  
 Conc: 1.40 ng/ml

Instrument :  
 ECD\_P  
 ClientSampleId :  
 AR1242ICC750



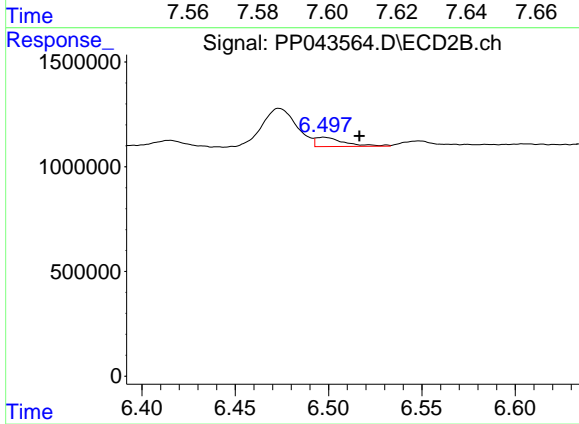
#35 AR-1260-5

R.T.: 7.061 min  
 Delta R.T.: -0.003 min  
 Response: 219816  
 Conc: 1.19 ng/ml



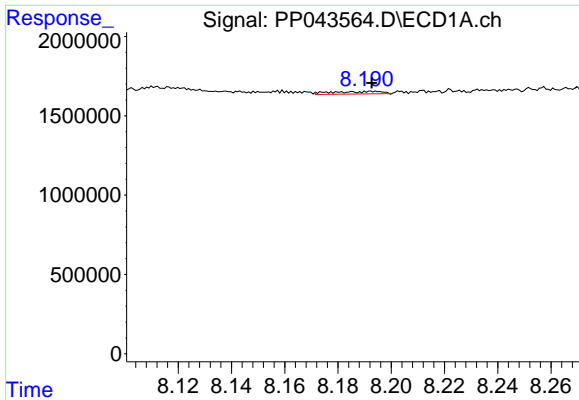
#36 AR-1262-1

R.T.: 7.603 min  
 Delta R.T.: 0.000 min  
 Response: 139576  
 Conc: 1.41 ng/ml



#36 AR-1262-1

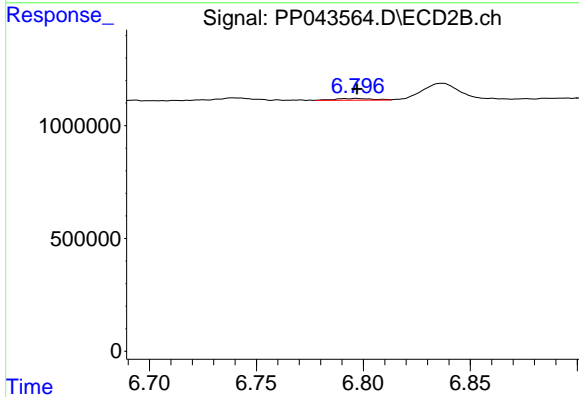
R.T.: 6.497 min  
 Delta R.T.: -0.019 min  
 Response: 469204  
 Conc: 4.27 ng/ml



#37 AR-1262-2

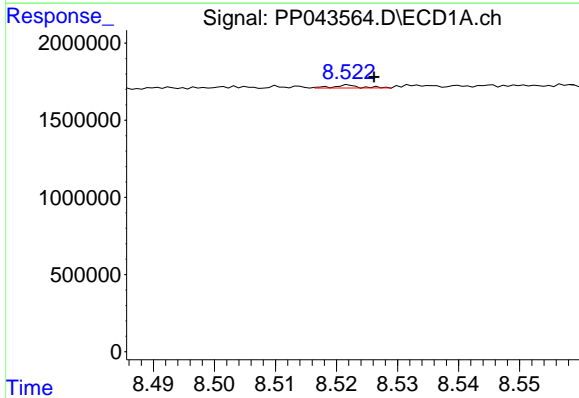
R.T.: 8.186 min  
 Delta R.T.: -0.007 min  
 Response: 216353  
 Conc: 1.34 ng/ml

Instrument :  
 ECD\_P  
 ClientSampleId :  
 AR1242ICC750



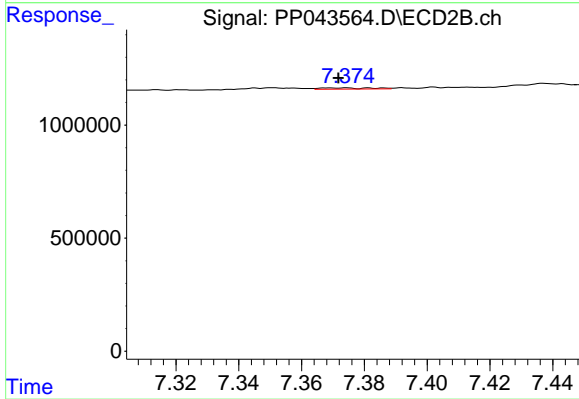
#37 AR-1262-2

R.T.: 6.797 min  
 Delta R.T.: 0.000 min  
 Response: 94996  
 Conc: 0.93 ng/ml



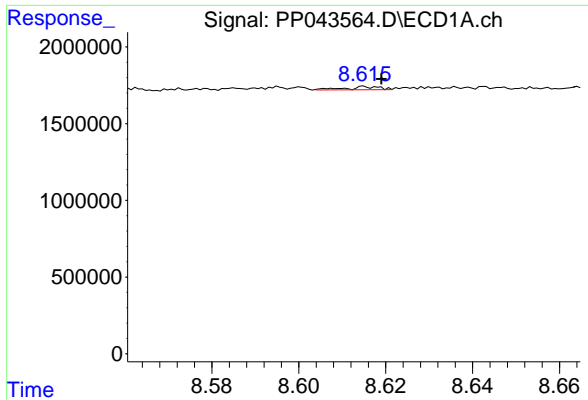
#38 AR-1262-3

R.T.: 8.522 min  
 Delta R.T.: -0.004 min  
 Response: 59098  
 Conc: 0.54 ng/ml



#38 AR-1262-3

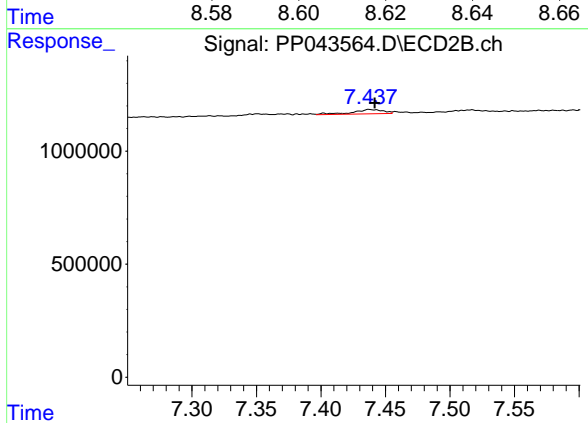
R.T.: 7.374 min  
 Delta R.T.: 0.002 min  
 Response: 63668  
 Conc: 0.75 ng/ml



#39 AR-1262-4

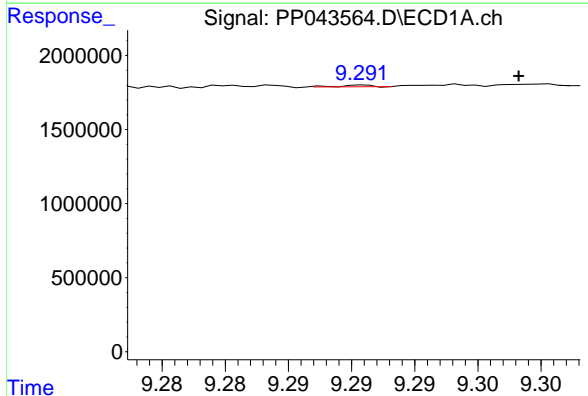
R.T.: 8.616 min  
 Delta R.T.: -0.003 min  
 Response: 113276  
 Conc: 2.36 ng/ml

Instrument :  
 ECD\_P  
 ClientSampleId :  
 AR1242ICC750



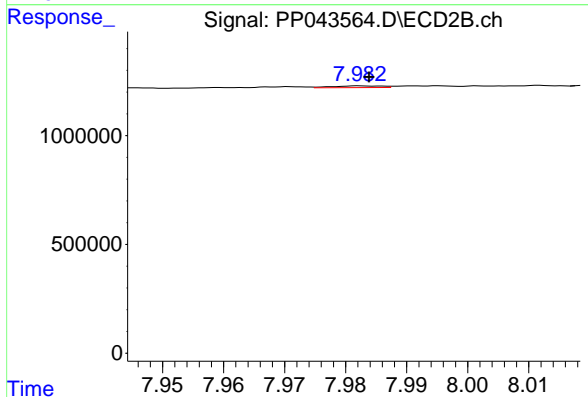
#39 AR-1262-4

R.T.: 7.437 min  
 Delta R.T.: -0.004 min  
 Response: 313008  
 Conc: 2.02 ng/ml



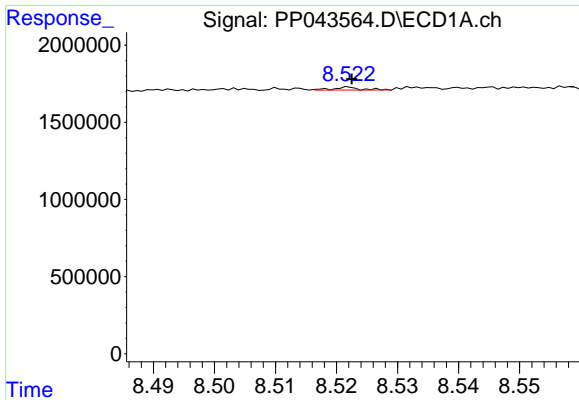
#40 AR-1262-5

R.T.: 9.291 min  
 Delta R.T.: -0.012 min  
 Response: 17868  
 Conc: 0.32 ng/ml



#40 AR-1262-5

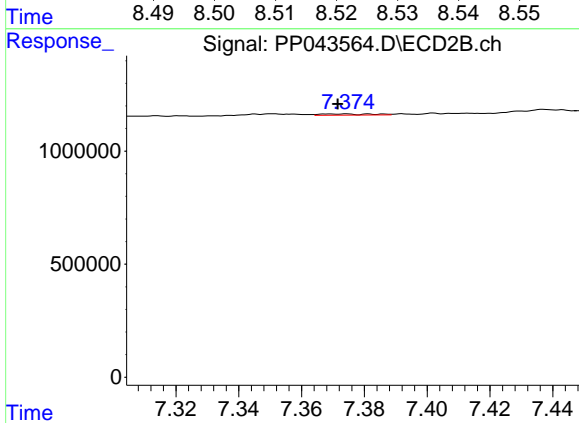
R.T.: 7.983 min  
 Delta R.T.: -0.001 min  
 Response: 45744  
 Conc: 0.59 ng/ml



#41 AR-1268-1

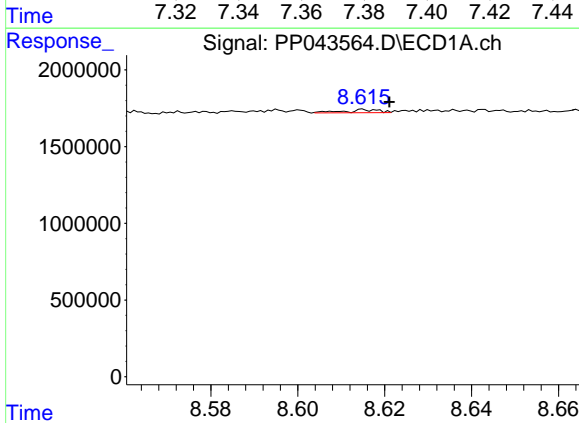
R.T.: 8.522 min  
 Delta R.T.: 0.000 min  
 Response: 59098  
 Conc: 0.30 ng/ml

Instrument :  
 ECD\_P  
 ClientSampleId :  
 AR1242ICC750



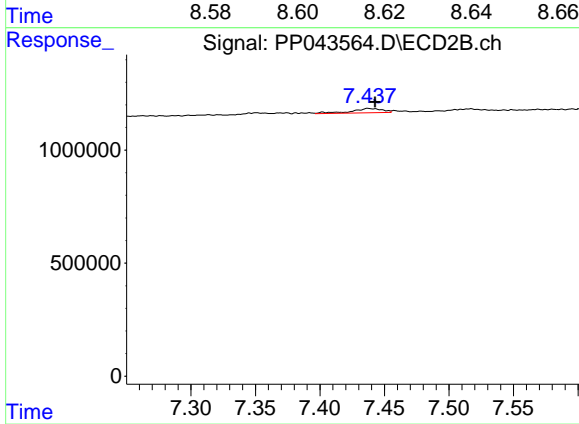
#41 AR-1268-1

R.T.: 7.374 min  
 Delta R.T.: 0.003 min  
 Response: 63668  
 Conc: 0.25 ng/ml



#42 AR-1268-2

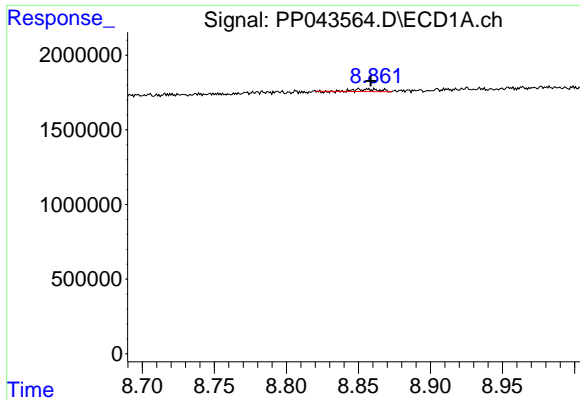
R.T.: 8.616 min  
 Delta R.T.: -0.005 min  
 Response: 113276  
 Conc: 0.65 ng/ml



#42 AR-1268-2

R.T.: 7.437 min  
 Delta R.T.: -0.005 min  
 Response: 313008  
 Conc: 1.39 ng/ml

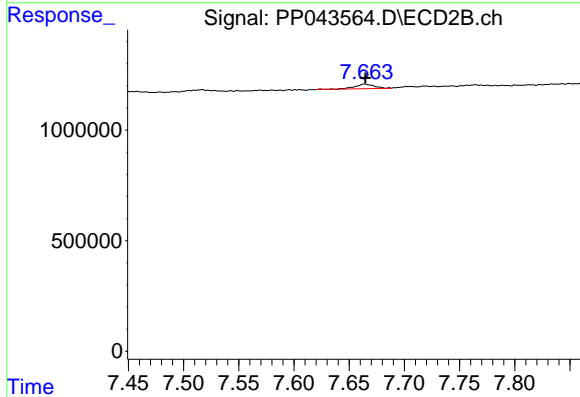




#43 AR-1268-3

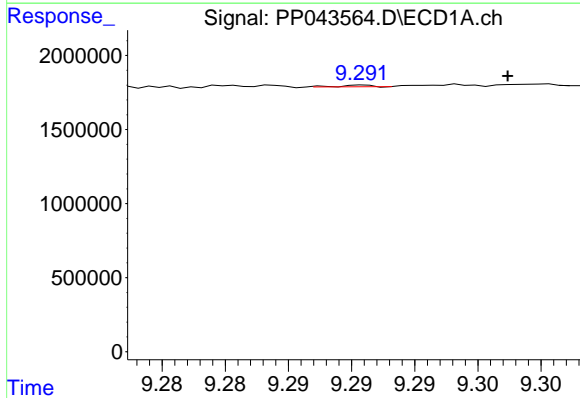
R.T.: 8.861 min  
 Delta R.T.: 0.002 min  
 Response: 169448  
 Conc: 1.10 ng/ml

Instrument :  
 ECD\_P  
 ClientSampleId :  
 AR1242ICC750



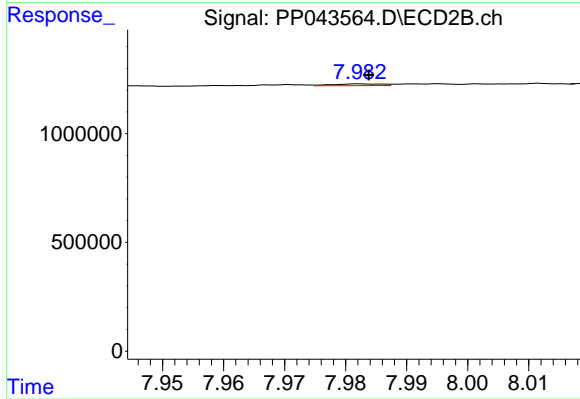
#43 AR-1268-3

R.T.: 7.664 min  
 Delta R.T.: 0.000 min  
 Response: 260126  
 Conc: 1.34 ng/ml



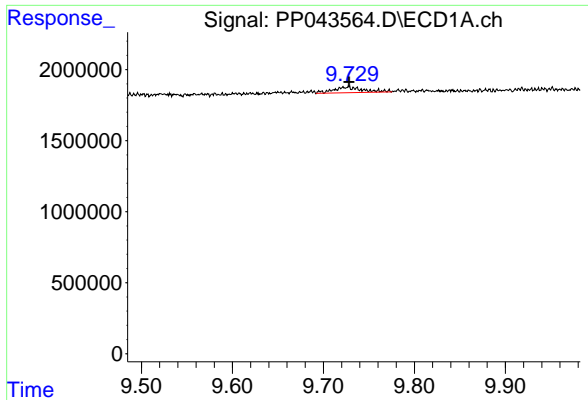
#44 AR-1268-4

R.T.: 9.291 min  
 Delta R.T.: -0.011 min  
 Response: 17868  
 Conc: 0.29 ng/ml



#44 AR-1268-4

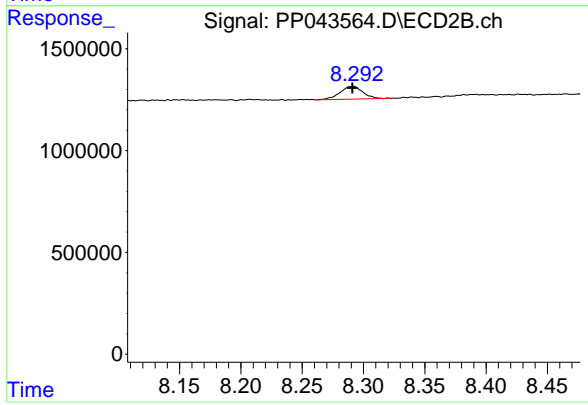
R.T.: 7.983 min  
 Delta R.T.: 0.000 min  
 Response: 45744  
 Conc: 0.51 ng/ml



#45 AR-1268-5

R.T.: 9.728 min  
Delta R.T.: 0.000 min  
Response: 886217  
Conc: 1.95 ng/ml

Instrument :  
ECD\_P  
ClientSampleId :  
AR1242ICC750



#45 AR-1268-5

R.T.: 8.291 min  
Delta R.T.: 0.000 min  
Response: 814048  
Conc: 1.35 ng/ml