

Data Path : Z:\pestpcbsrv\HPCHEM1\ECD_P\Data\PP021022\
 Data File : PP043584.D
 Signal(s) : Signal #1: ECD1A.ch Signal #2: ECD2B.ch
 Acq On : 10 Feb 2022 22:26
 Operator : YP\AJ
 Sample : P0021022ICV500
 Misc :
 ALS Vial : 31 Sample Multiplier: 1

Instrument :
 ECD_P
 ClientSampleId :
 ICVPP021022

Integration File signal 1: autoint1.e
 Integration File signal 2: autoint2.e
 Quant Time: Feb 12 00:15:30 2022
 Quant Method : Z:\pestpcbsrv\HPCHEM1\ECD_P\methods\PP021022.M
 Quant Title : GC EXTRACTABLES
 QLast Update : Fri Feb 11 04:48:05 2022
 Response via : Initial Calibration
 Integrator: ChemStation

Volume Inj. : 2 µl
 Signal #1 Phase : ZB-MR1 Signal #2 Phase: ZB-MR2
 Signal #1 Info : 30Mx0.32mmx 0.50µ Signal #2 Info : 30M x 0.32mm x 0.25µm

Compound	RT#1	RT#2	Resp#1	Resp#2	ng/ml	ng/ml

System Monitoring Compounds						
1) SA Tetrachlo...	3.919	3.174	112.7E6	92704916	50.963	49.357
2) SA Decachlor...	10.072	8.556	61964603	81488282	52.164	50.227
Target Compounds						
3) L1 AR-1016-1	5.174	4.323	35304983	29789320	486.548	486.203
4) L1 AR-1016-2	5.198	4.342	51716873	41747291	490.344	494.115
5) L1 AR-1016-3	5.263	4.527	32670186	23252579	496.167	497.734
6) L1 AR-1016-4	5.369	4.576	26826654	18747283	494.680	501.654
7) L1 AR-1016-5	5.691	4.801	26294511	22919059	500.582	501.702
8) L2 AR-1221-1	4.143	3.401	4443930	3810779	174.550	159.758
9) L2 AR-1221-2	4.239	3.491	5923538	5401081	308.544	299.062
10) L2 AR-1221-3	4.318	3.572	21201903	18728885	369.076	363.050
11) L3 AR-1232-1	4.318	3.572	21201903	18728885	436.865	435.301
12) L3 AR-1232-2	4.884	4.342	28301056	41747291	1194.280	1169.463
13) L3 AR-1232-3	5.198	4.527	51716873	23252579	1201.218	1189.137
14) L3 AR-1232-4	5.369	4.619	26826654	22479323	1228.986	1299.957
15) L3 AR-1232-5	5.473	4.801	21961725	22919059	1361.612	1220.126
16) L4 AR-1242-1	5.174	4.323	35304983	29789320	628.294	611.089
17) L4 AR-1242-2	5.198	4.342	51716873	41747291	625.098	619.994
18) L4 AR-1242-3	5.263	4.527	32670186	23252579	631.186	619.433
19) L4 AR-1242-4	5.369	4.619	26826654	22479323	628.076	622.532
20) L4 AR-1242-5	6.172	5.179	3745664	16944380	86.741	393.617 #
21) L5 AR-1248-1	5.174	4.323	35304983	29789320	861.148	799.708
22) L5 AR-1248-2	5.473	4.576	21961725	18747283	386.562	383.213
23) L5 AR-1248-3	5.691	4.619	26294511	22479323	394.124	438.064
24) L5 AR-1248-4	6.130	4.801	4347177	22919059	62.221	390.937 #
25) L5 AR-1248-5	6.172	5.222	3745664	3236015	54.182	56.477
26) L6 AR-1254-1	6.101	5.179	17024708	16944380	225.324	194.021
27) L6 AR-1254-2	6.341	5.340	18522819	15522435	165.134	203.500
28) L6 AR-1254-3	6.741	5.789f	10687222	29627950	92.360	241.746 #
29) L6 AR-1254-4	7.054	6.022	7217106	4765466	90.402	60.380 #
30) L6 AR-1254-5	7.514	6.473	52058005	53556537	606.998	463.113
31) L7 AR-1260-1	6.922	5.913	41022802	39159055	489.870	489.672
32) L7 AR-1260-2	7.205	6.119	45153923	48260916	498.824	494.209
33) L7 AR-1260-3	7.601	6.283	35375623	44851739	488.017	491.303
34) L7 AR-1260-4	7.848	6.796	40414080	40282670	470.718	497.869
35) L7 AR-1260-5	8.192	7.064	72701419	93789715	469.019	507.341
36) L8 AR-1262-1	7.601	6.516	35375623	42419621	358.272	385.868
37) L8 AR-1262-2	8.192	6.796	72701419	40282670	450.327	394.913
38) L8 AR-1262-3	8.536	7.371	46543164	23992281	425.444	281.519 #
39) L8 AR-1262-4	8.618	7.441	11692004	72967511	243.804	469.806 #
40) L8 AR-1262-5	9.303	7.984	20666302	29379233	371.104	377.654
41) L9 AR-1268-1	8.536	7.371	46543164	23992281	238.763	94.696 #

Data Path : Z:\pestpcbsrv\HPCHEM1\ECD_P\Data\PP021022\
 Data File : PP043584.D
 Signal(s) : Signal #1: ECD1A.ch Signal #2: ECD2B.ch
 Acq On : 10 Feb 2022 22:26
 Operator : YP\AJ
 Sample : P0021022ICV500
 Misc :
 ALS Vial : 31 Sample Multiplier: 1

Instrument :
 ECD_P
 ClientSampleId :
 ICVPP021022

Integration File signal 1: autoint1.e
 Integration File signal 2: autoint2.e
 Quant Time: Feb 12 00:15:30 2022
 Quant Method : Z:\pestpcbsrv\HPCHEM1\ECD_P\methods\PP021022.M
 Quant Title : GC EXTRACTABLES
 QLast Update : Fri Feb 11 04:48:05 2022
 Response via : Initial Calibration
 Integrator: ChemStation

Volume Inj. : 2 µl
 Signal #1 Phase : ZB-MR1 Signal #2 Phase: ZB-MR2
 Signal #1 Info : 30Mx0.32mmx 0.50µ Signal #2 Info : 30M x 0.32mm x 0.25µm

	Compound	RT#1	RT#2	Resp#1	Resp#2	ng/ml	ng/ml
42)	L9 AR-1268-2	8.618	7.441	11692004	72967511	66.796	322.919 #
43)	L9 AR-1268-3	8.857	7.665	816208	1355646	5.287	6.962 #
44)	L9 AR-1268-4	9.303	7.984	20666302	29379233	330.290	326.703
45)	L9 AR-1268-5	9.728	8.290	6007683	8703364	13.220	14.484

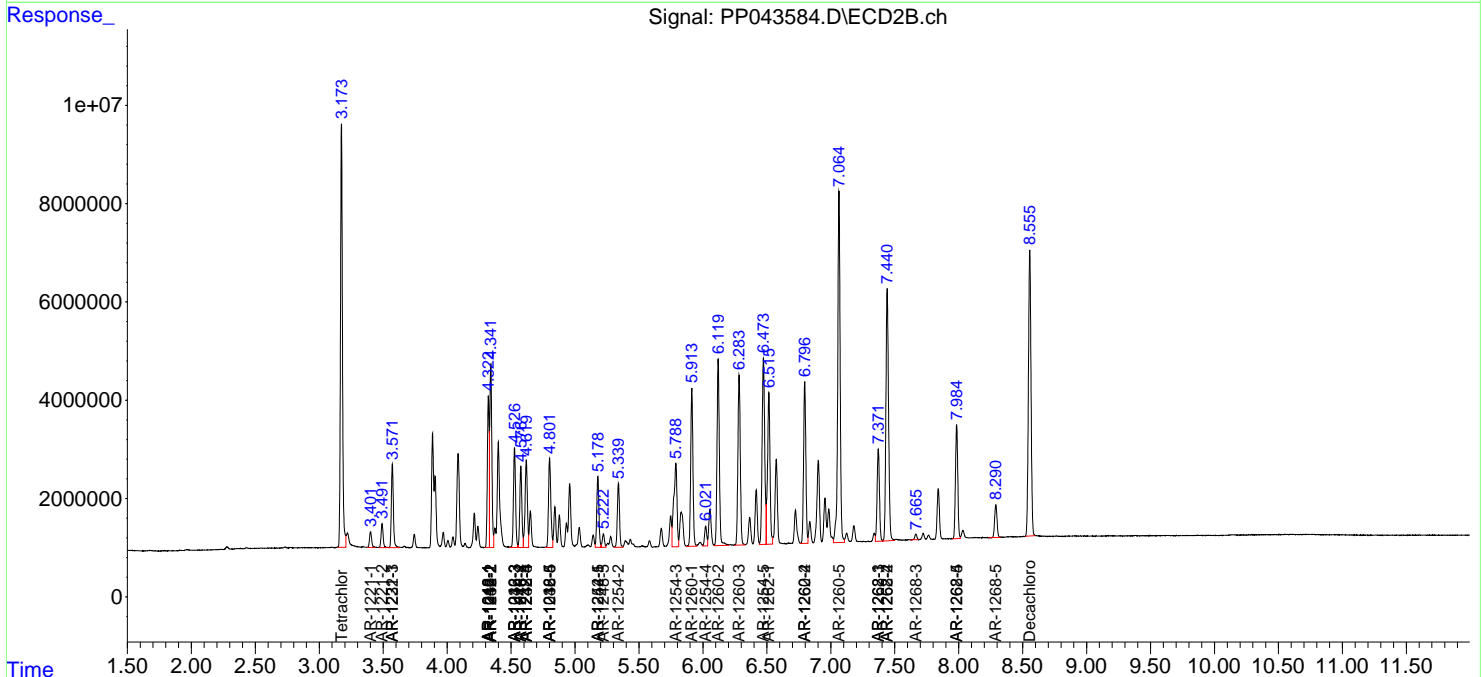
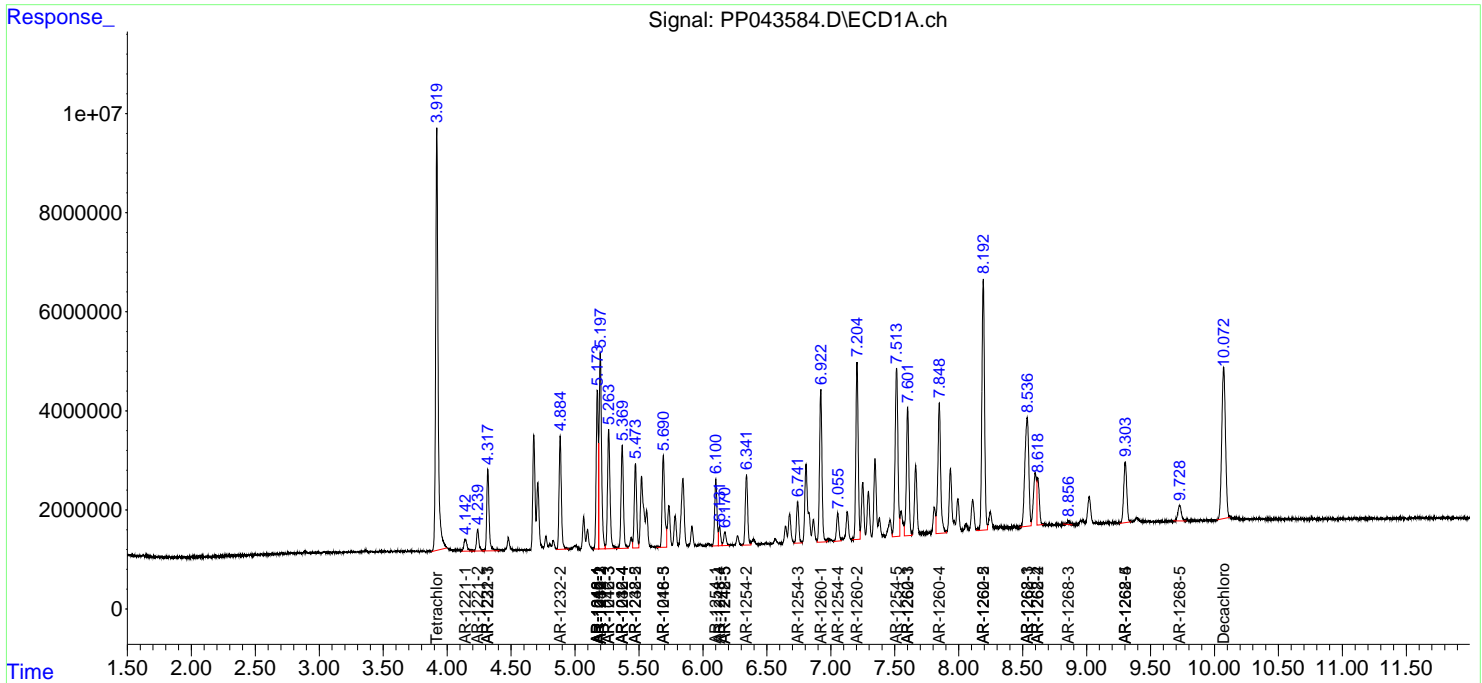
(f)=RT Delta > 1/2 Window (#)=Amounts differ by > 25% (m)=manual int.

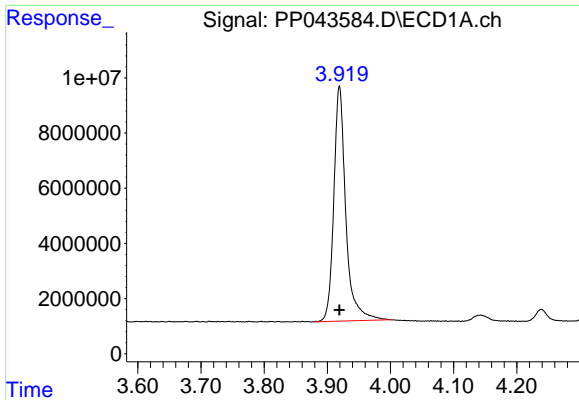
Data Path : Z:\pestpcbsrv\HPCHEM1\ECD_P\Data\PP021022\
 Data File : PP043584.D
 Signal(s) : Signal #1: ECD1A.ch Signal #2: ECD2B.ch
 Acq On : 10 Feb 2022 22:26
 Operator : YP\AJ
 Sample : P0021022ICV500
 Misc :
 ALS Vial : 31 Sample Multiplier: 1

Instrument :
 ECD_P
 ClientSampleId :
 ICVPP021022

Integration File signal 1: autoint1.e
 Integration File signal 2: autoint2.e
 Quant Time: Feb 12 00:15:30 2022
 Quant Method : Z:\pestpcbsrv\HPCHEM1\ECD_P\methods\PP021022.M
 Quant Title : GC EXTRACTABLES
 QLast Update : Fri Feb 11 04:48:05 2022
 Response via : Initial Calibration
 Integrator: ChemStation

Volume Inj. : 2 µl
 Signal #1 Phase : ZB-MR1 Signal #2 Phase: ZB-MR2
 Signal #1 Info : 30Mx0.32mmx 0.50µ Signal #2 Info : 30M x 0.32mm x 0.25µm

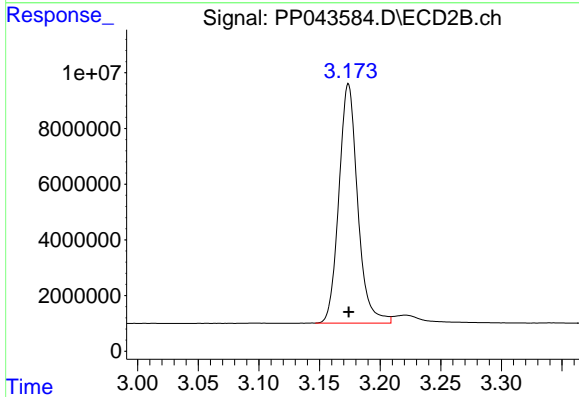




#1 Tetrachloro-m-xylene

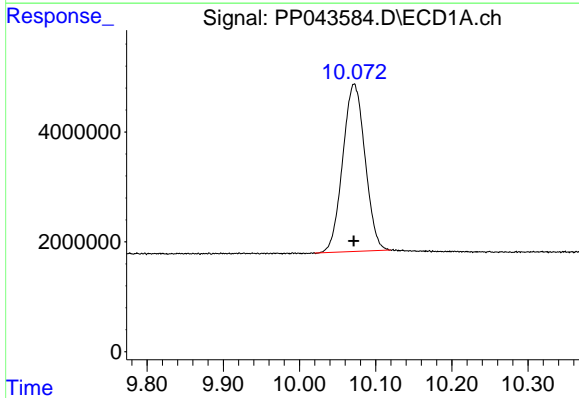
R.T.: 3.919 min
 Delta R.T.: 0.000 min
 Response: 112681092
 Conc: 50.96 ng/ml

Instrument :
 ECD_P
 ClientSampleId :
 ICVPP021022



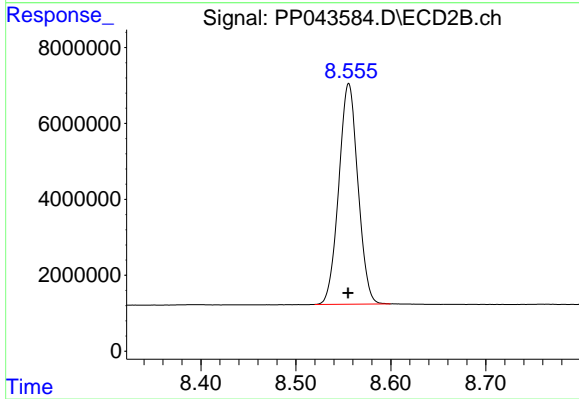
#1 Tetrachloro-m-xylene

R.T.: 3.174 min
 Delta R.T.: 0.000 min
 Response: 92704916
 Conc: 49.36 ng/ml



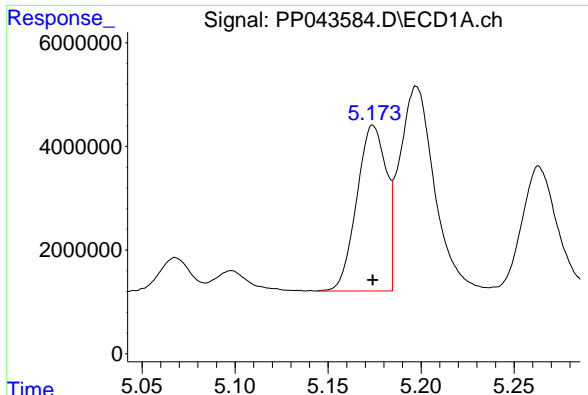
#2 Decachlorobiphenyl

R.T.: 10.072 min
 Delta R.T.: 0.000 min
 Response: 61964603
 Conc: 52.16 ng/ml



#2 Decachlorobiphenyl

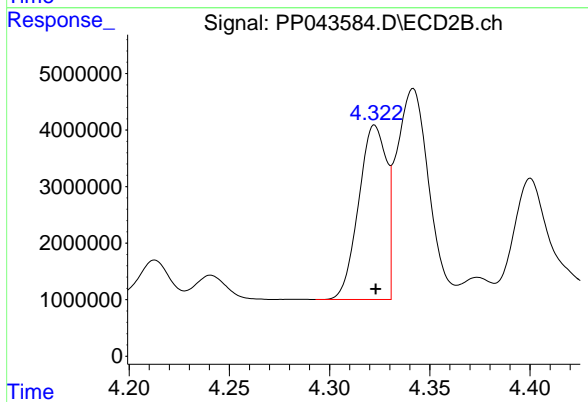
R.T.: 8.556 min
 Delta R.T.: 0.000 min
 Response: 81488282
 Conc: 50.23 ng/ml



#3 AR-1016-1

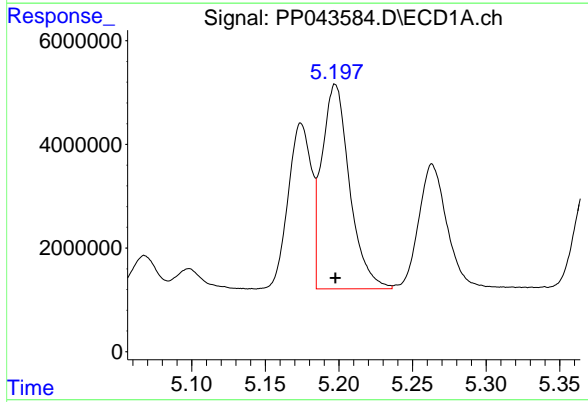
R.T.: 5.174 min
 Delta R.T.: 0.000 min
 Response: 35304983
 Conc: 486.55 ng/ml

Instrument :
 ECD_P
 ClientSampleId :
 ICVPP021022



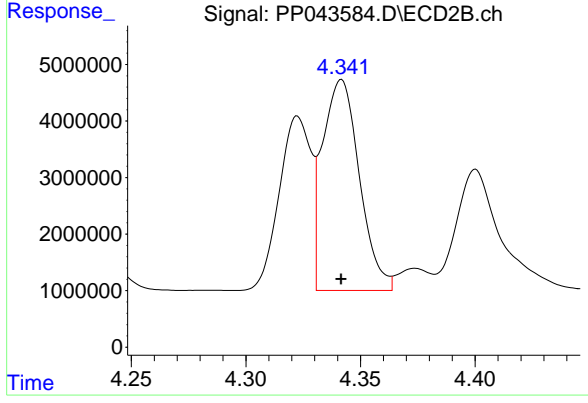
#3 AR-1016-1

R.T.: 4.323 min
 Delta R.T.: 0.000 min
 Response: 29789320
 Conc: 486.20 ng/ml



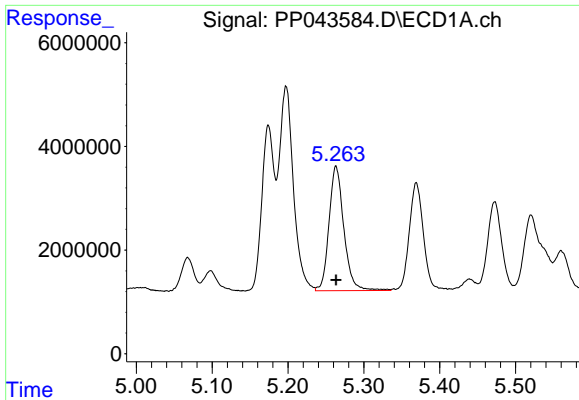
#4 AR-1016-2

R.T.: 5.198 min
 Delta R.T.: 0.000 min
 Response: 51716873
 Conc: 490.34 ng/ml



#4 AR-1016-2

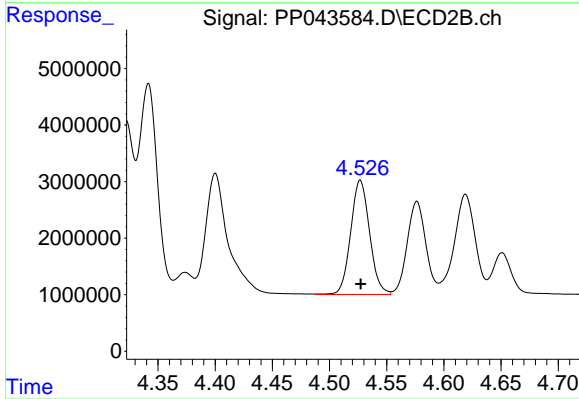
R.T.: 4.342 min
 Delta R.T.: 0.000 min
 Response: 41747291
 Conc: 494.12 ng/ml



#5 AR-1016-3

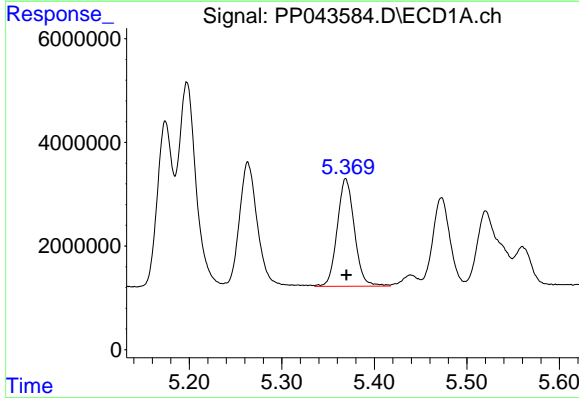
R.T.: 5.263 min
 Delta R.T.: 0.000 min
 Response: 32670186
 Conc: 496.17 ng/ml

Instrument :
 ECD_P
 ClientSampleId :
 ICVPP021022



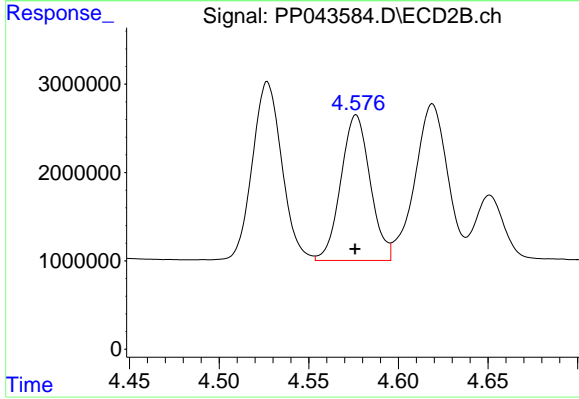
#5 AR-1016-3

R.T.: 4.527 min
 Delta R.T.: 0.000 min
 Response: 23252579
 Conc: 497.73 ng/ml



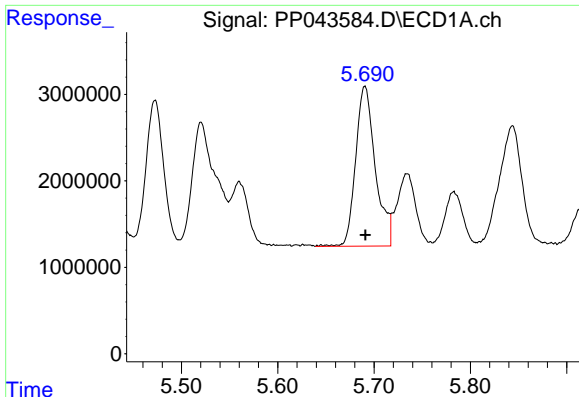
#6 AR-1016-4

R.T.: 5.369 min
 Delta R.T.: 0.000 min
 Response: 26826654
 Conc: 494.68 ng/ml



#6 AR-1016-4

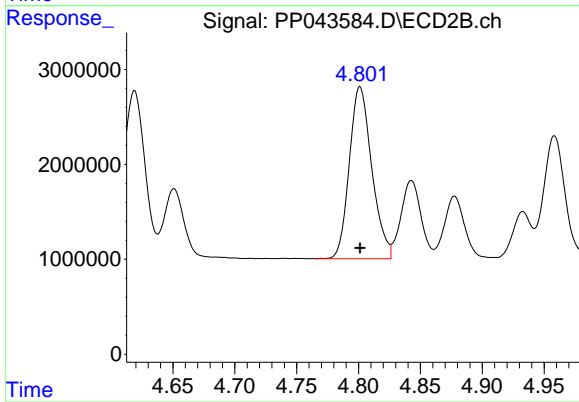
R.T.: 4.576 min
 Delta R.T.: 0.000 min
 Response: 18747283
 Conc: 501.65 ng/ml



#7 AR-1016-5

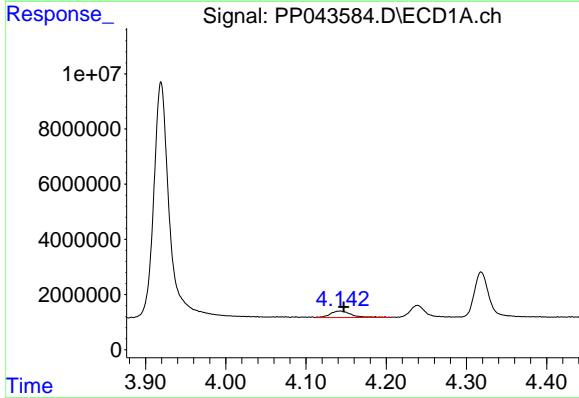
R.T.: 5.691 min
 Delta R.T.: 0.000 min
 Response: 26294511
 Conc: 500.58 ng/ml

Instrument :
 ECD_P
 ClientSampleId :
 ICVPP021022



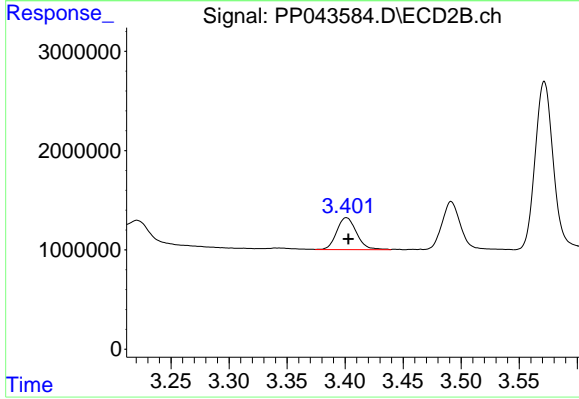
#7 AR-1016-5

R.T.: 4.801 min
 Delta R.T.: 0.000 min
 Response: 22919059
 Conc: 501.70 ng/ml



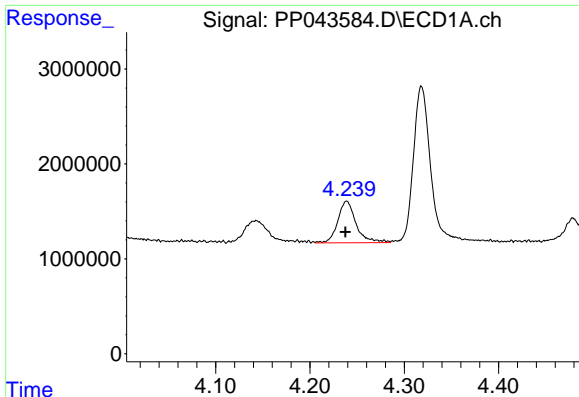
#8 AR-1221-1

R.T.: 4.143 min
 Delta R.T.: -0.004 min
 Response: 4443930
 Conc: 174.55 ng/ml



#8 AR-1221-1

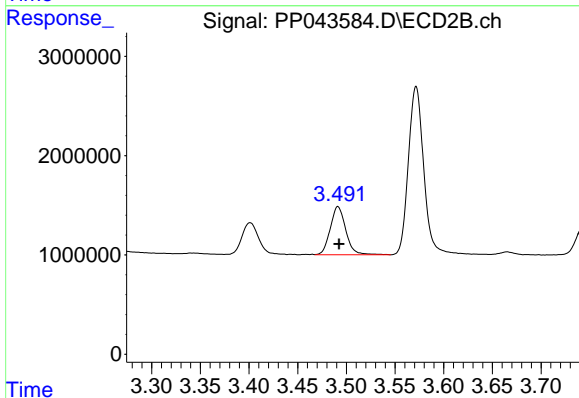
R.T.: 3.401 min
 Delta R.T.: -0.002 min
 Response: 3810779
 Conc: 159.76 ng/ml



#9 AR-1221-2

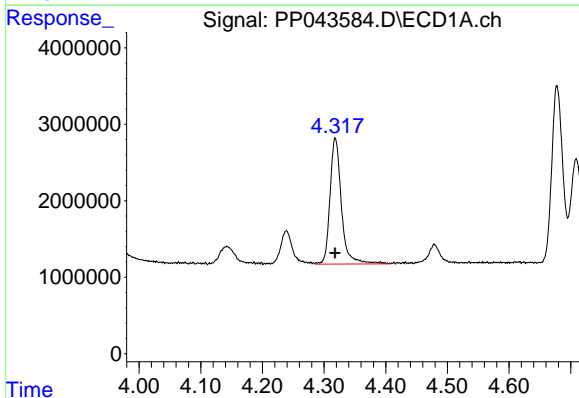
R.T.: 4.239 min
 Delta R.T.: 0.001 min
 Response: 5923538
 Conc: 308.54 ng/ml

Instrument :
 ECD_P
 ClientSampleId :
 ICVPP021022



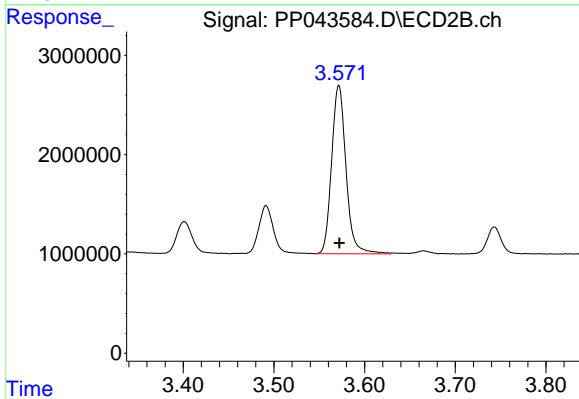
#9 AR-1221-2

R.T.: 3.491 min
 Delta R.T.: -0.001 min
 Response: 5401081
 Conc: 299.06 ng/ml



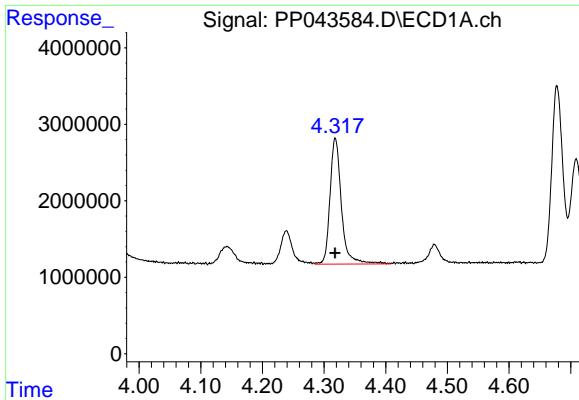
#10 AR-1221-3

R.T.: 4.318 min
 Delta R.T.: 0.000 min
 Response: 21201903
 Conc: 369.08 ng/ml



#10 AR-1221-3

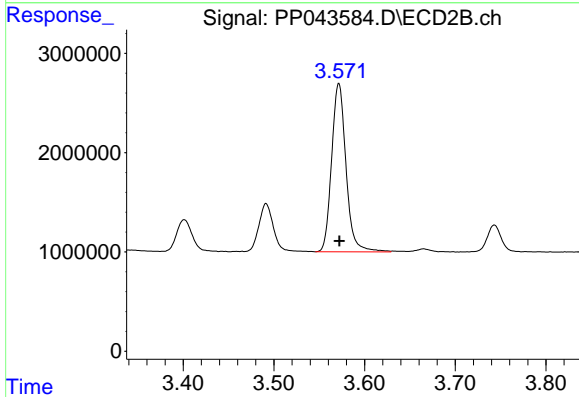
R.T.: 3.572 min
 Delta R.T.: 0.000 min
 Response: 18728885
 Conc: 363.05 ng/ml



#11 AR-1232-1

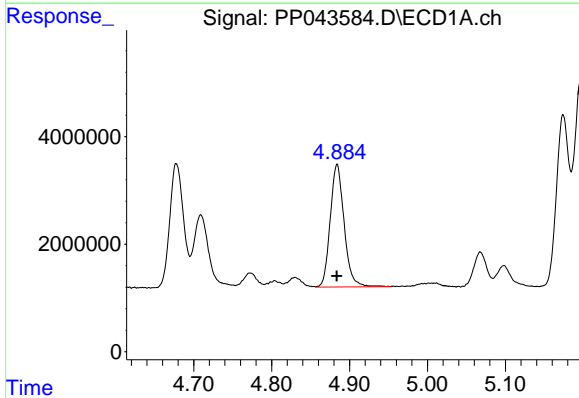
R.T.: 4.318 min
 Delta R.T.: 0.000 min
 Response: 21201903
 Conc: 436.87 ng/ml

Instrument :
 ECD_P
 ClientSampleId :
 ICVPP021022



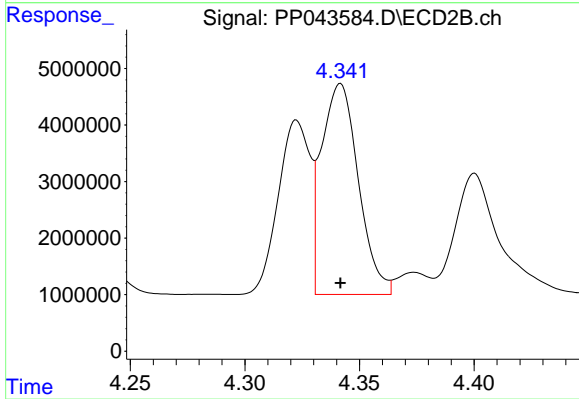
#11 AR-1232-1

R.T.: 3.572 min
 Delta R.T.: 0.000 min
 Response: 18728885
 Conc: 435.30 ng/ml



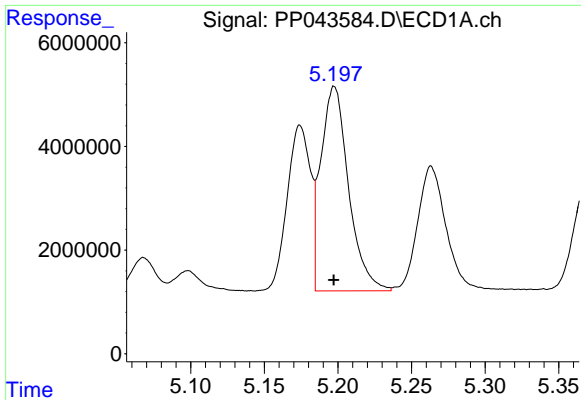
#12 AR-1232-2

R.T.: 4.884 min
 Delta R.T.: 0.000 min
 Response: 28301056
 Conc: 1194.28 ng/ml



#12 AR-1232-2

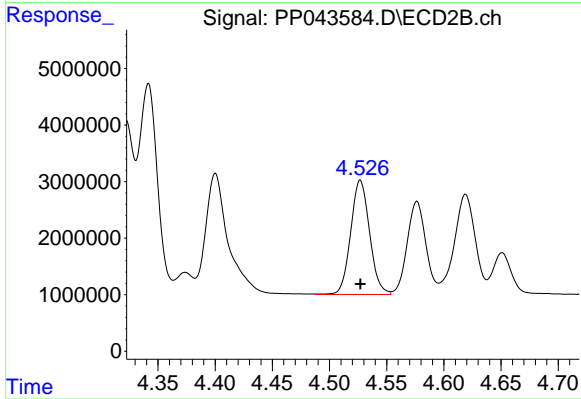
R.T.: 4.342 min
 Delta R.T.: 0.000 min
 Response: 41747291
 Conc: 1169.46 ng/ml



#13 AR-1232-3

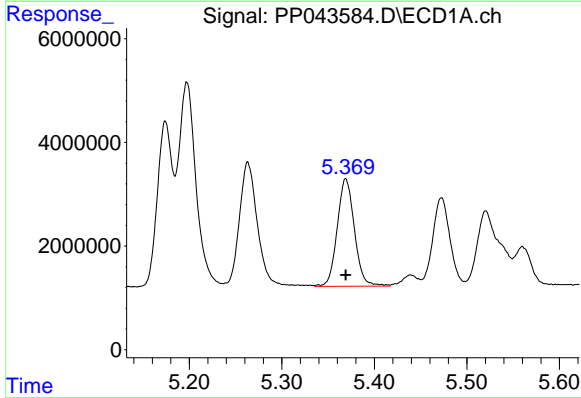
R.T.: 5.198 min
 Delta R.T.: 0.000 min
 Response: 51716873
 Conc: 1201.22 ng/m

Instrument :
 ECD_P
 ClientSampleId :
 ICVPP021022



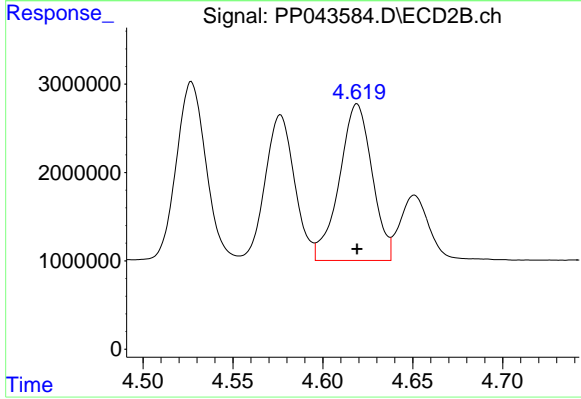
#13 AR-1232-3

R.T.: 4.527 min
 Delta R.T.: 0.000 min
 Response: 23252579
 Conc: 1189.14 ng/ml



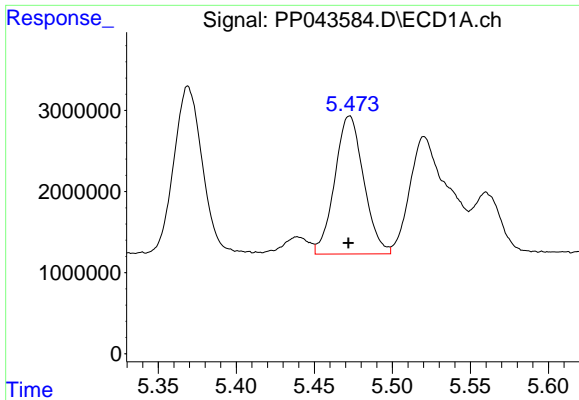
#14 AR-1232-4

R.T.: 5.369 min
 Delta R.T.: 0.000 min
 Response: 26826654
 Conc: 1228.99 ng/ml



#14 AR-1232-4

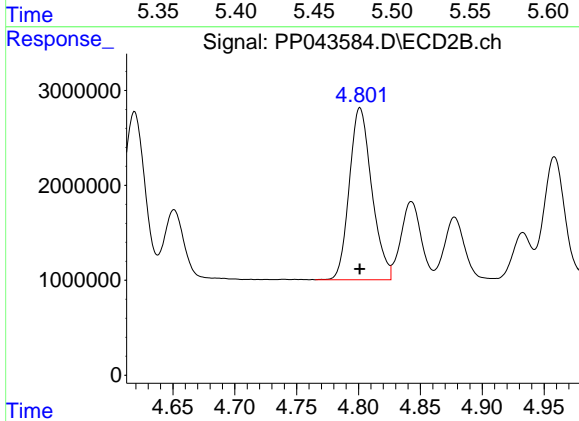
R.T.: 4.619 min
 Delta R.T.: 0.000 min
 Response: 22479323
 Conc: 1299.96 ng/ml



#15 AR-1232-5

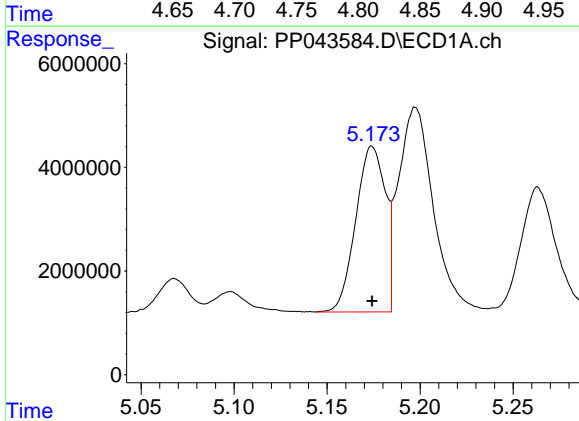
R.T.: 5.473 min
 Delta R.T.: 0.000 min
 Response: 21961725
 Conc: 1361.61 ng/ml

Instrument :
 ECD_P
 ClientSampleId :
 ICVPP021022



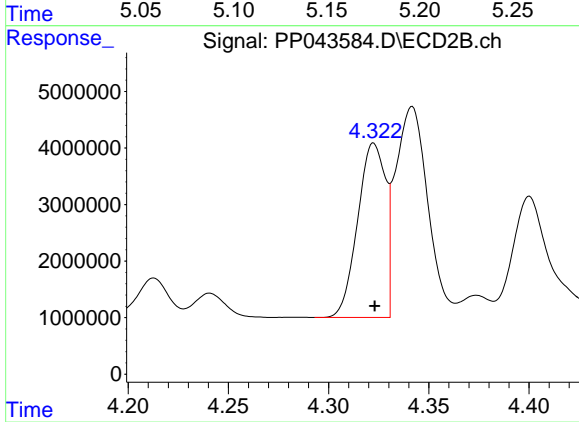
#15 AR-1232-5

R.T.: 4.801 min
 Delta R.T.: 0.000 min
 Response: 22919059
 Conc: 1220.13 ng/ml



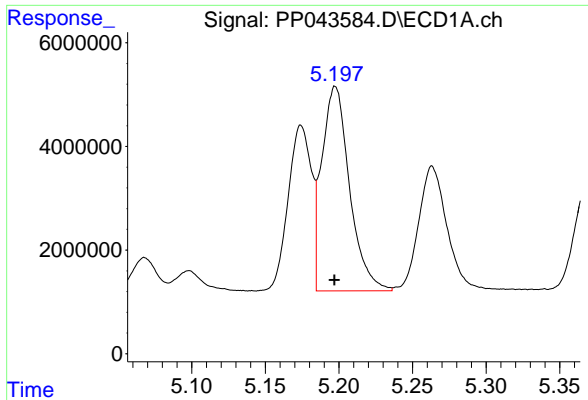
#16 AR-1242-1

R.T.: 5.174 min
 Delta R.T.: 0.000 min
 Response: 35304983
 Conc: 628.29 ng/ml



#16 AR-1242-1

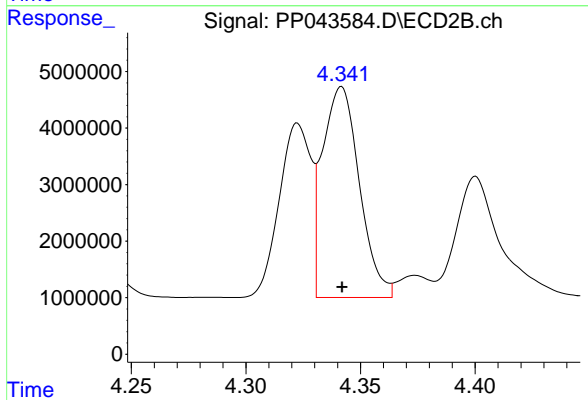
R.T.: 4.323 min
 Delta R.T.: 0.000 min
 Response: 29789320
 Conc: 611.09 ng/ml



#17 AR-1242-2

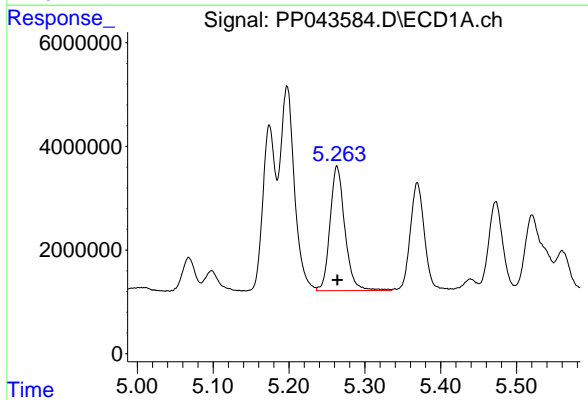
R.T.: 5.198 min
 Delta R.T.: 0.000 min
 Response: 51716873
 Conc: 625.10 ng/ml

Instrument :
 ECD_P
 ClientSampleId :
 ICVPP021022



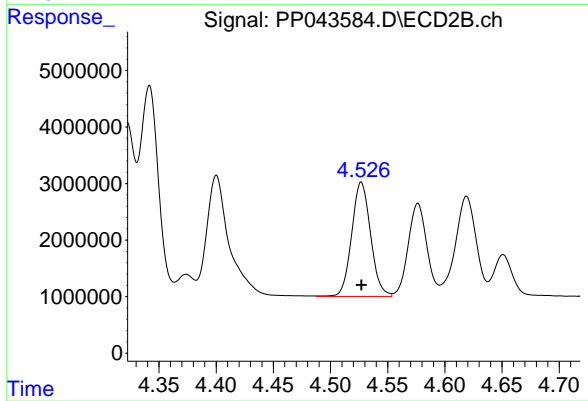
#17 AR-1242-2

R.T.: 4.342 min
 Delta R.T.: 0.000 min
 Response: 41747291
 Conc: 619.99 ng/ml



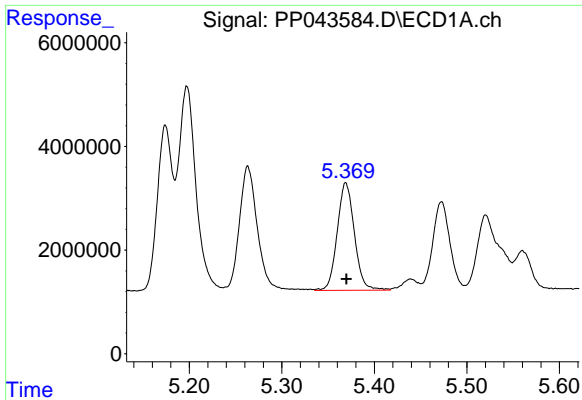
#18 AR-1242-3

R.T.: 5.263 min
 Delta R.T.: 0.000 min
 Response: 32670186
 Conc: 631.19 ng/ml



#18 AR-1242-3

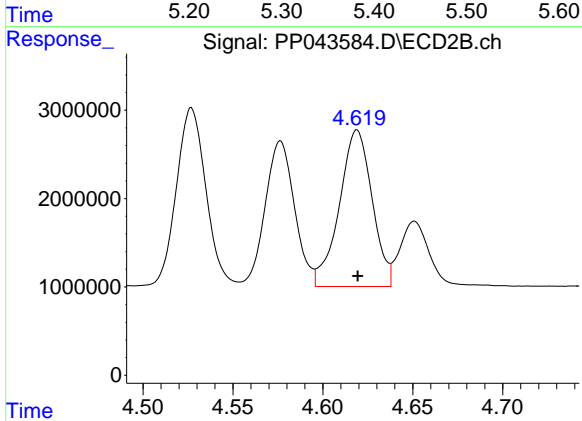
R.T.: 4.527 min
 Delta R.T.: 0.000 min
 Response: 23252579
 Conc: 619.43 ng/ml



#19 AR-1242-4

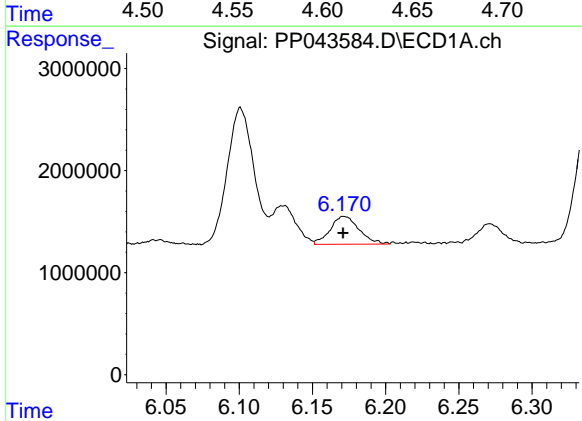
R.T.: 5.369 min
 Delta R.T.: 0.000 min
 Response: 26826654
 Conc: 628.08 ng/ml

Instrument :
 ECD_P
 ClientSampleId :
 ICVPP021022



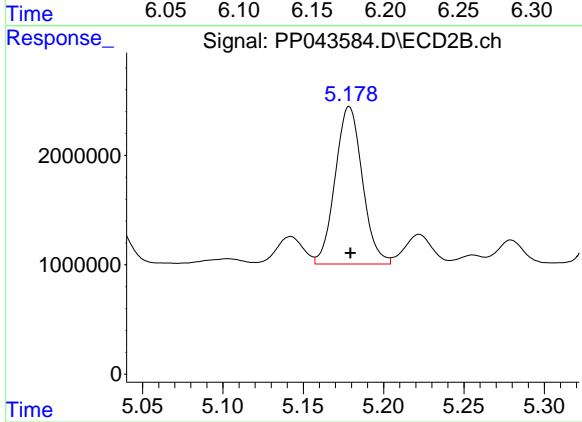
#19 AR-1242-4

R.T.: 4.619 min
 Delta R.T.: 0.000 min
 Response: 22479323
 Conc: 622.53 ng/ml



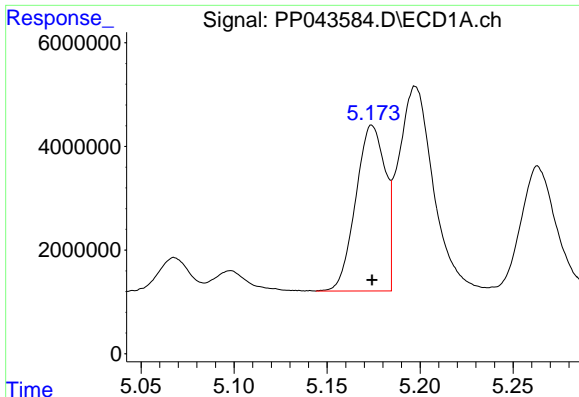
#20 AR-1242-5

R.T.: 6.172 min
 Delta R.T.: 0.000 min
 Response: 3745664
 Conc: 86.74 ng/ml



#20 AR-1242-5

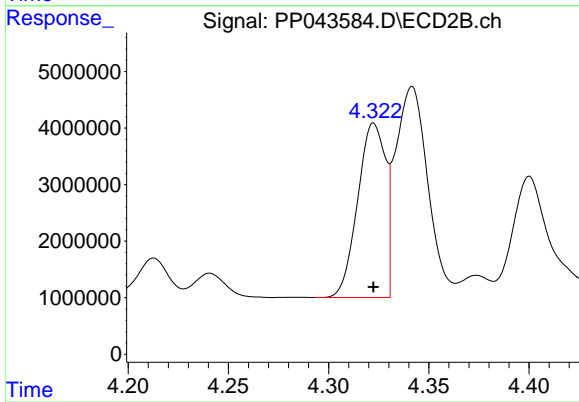
R.T.: 5.179 min
 Delta R.T.: 0.000 min
 Response: 16944380
 Conc: 393.62 ng/ml



#21 AR-1248-1

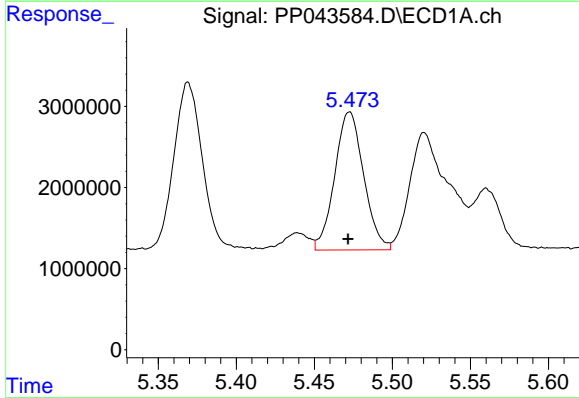
R.T.: 5.174 min
 Delta R.T.: 0.000 min
 Response: 35304983
 Conc: 861.15 ng/ml

Instrument :
 ECD_P
 ClientSampleId :
 ICVPP021022



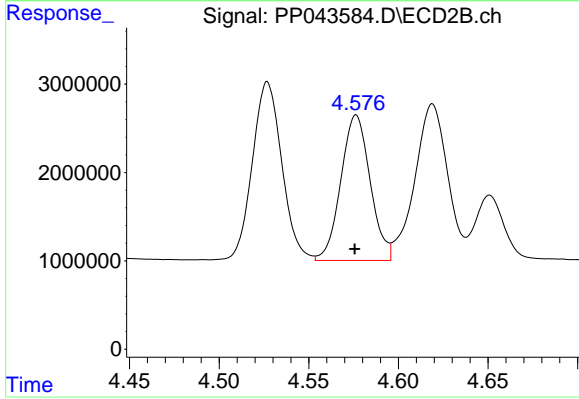
#21 AR-1248-1

R.T.: 4.323 min
 Delta R.T.: 0.000 min
 Response: 29789320
 Conc: 799.71 ng/ml



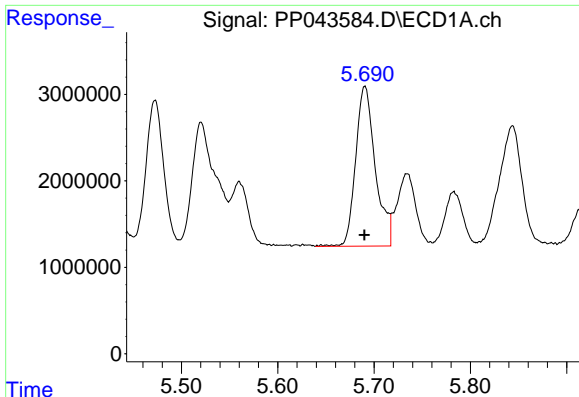
#22 AR-1248-2

R.T.: 5.473 min
 Delta R.T.: 0.000 min
 Response: 21961725
 Conc: 386.56 ng/ml



#22 AR-1248-2

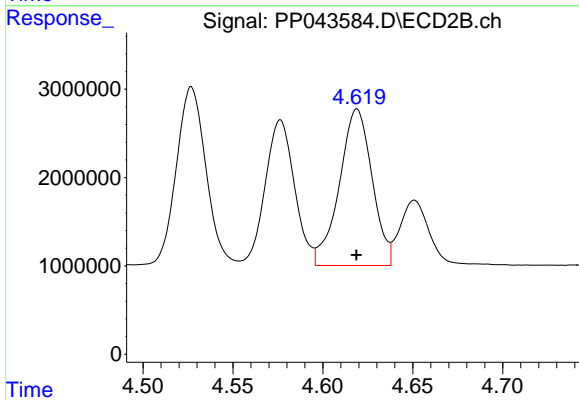
R.T.: 4.576 min
 Delta R.T.: 0.000 min
 Response: 18747283
 Conc: 383.21 ng/ml



#23 AR-1248-3

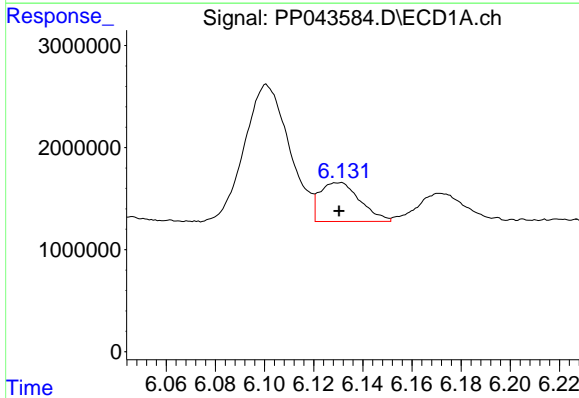
R.T.: 5.691 min
 Delta R.T.: 0.000 min
 Response: 26294511
 Conc: 394.12 ng/ml

Instrument :
 ECD_P
 ClientSampleId :
 ICVPP021022



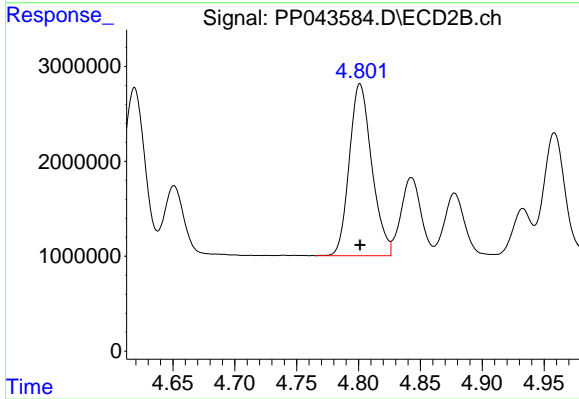
#23 AR-1248-3

R.T.: 4.619 min
 Delta R.T.: 0.000 min
 Response: 22479323
 Conc: 438.06 ng/ml



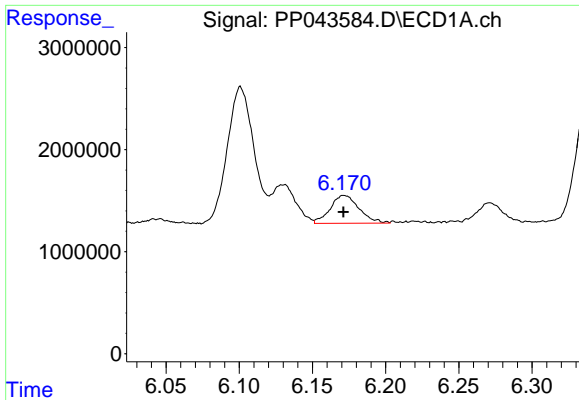
#24 AR-1248-4

R.T.: 6.130 min
 Delta R.T.: 0.000 min
 Response: 4347177
 Conc: 62.22 ng/ml



#24 AR-1248-4

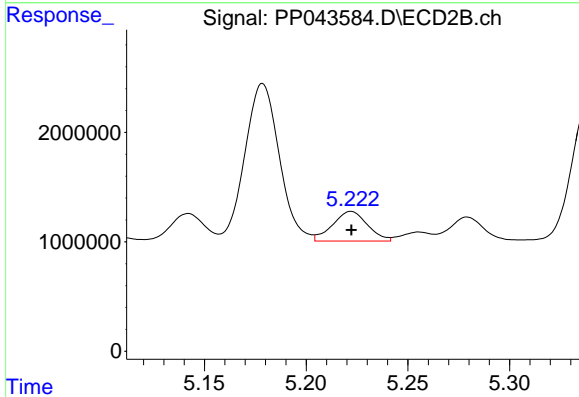
R.T.: 4.801 min
 Delta R.T.: 0.000 min
 Response: 22919059
 Conc: 390.94 ng/ml



#25 AR-1248-5

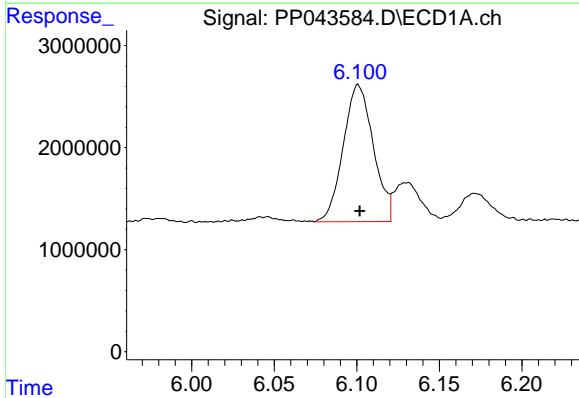
R.T.: 6.172 min
 Delta R.T.: 0.000 min
 Response: 3745664
 Conc: 54.18 ng/ml

Instrument :
 ECD_P
 ClientSampleId :
 ICVPP021022



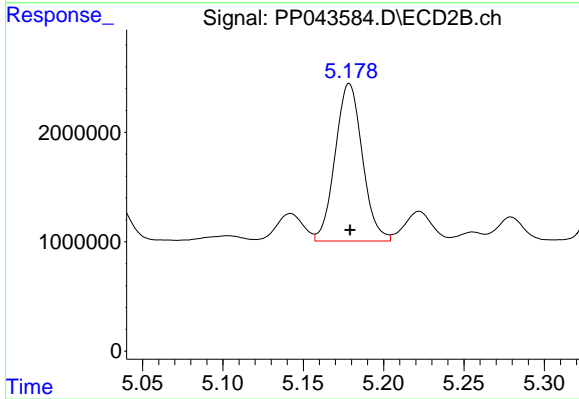
#25 AR-1248-5

R.T.: 5.222 min
 Delta R.T.: 0.000 min
 Response: 3236015
 Conc: 56.48 ng/ml



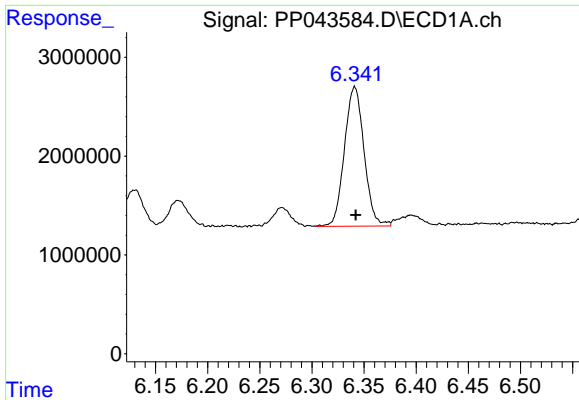
#26 AR-1254-1

R.T.: 6.101 min
 Delta R.T.: 0.000 min
 Response: 17024708
 Conc: 225.32 ng/ml



#26 AR-1254-1

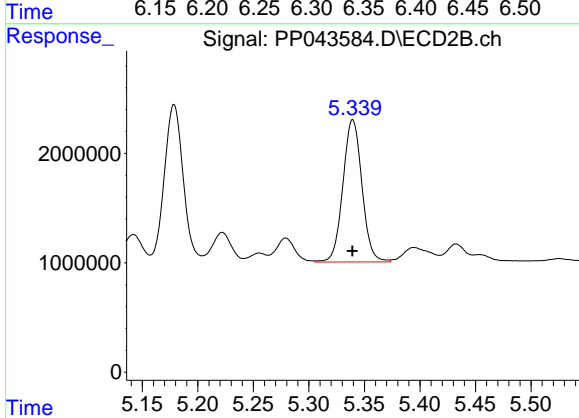
R.T.: 5.179 min
 Delta R.T.: 0.000 min
 Response: 16944380
 Conc: 194.02 ng/ml



#27 AR-1254-2

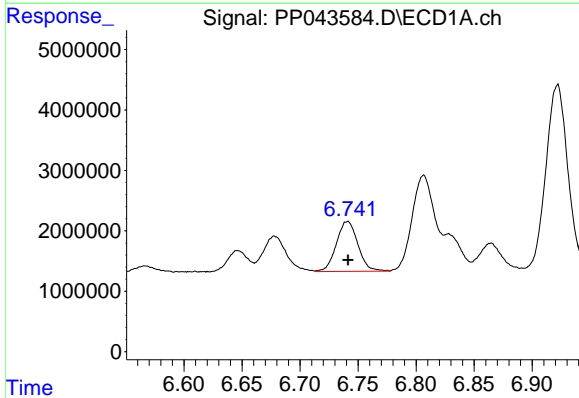
R.T.: 6.341 min
 Delta R.T.: 0.000 min
 Response: 18522819
 Conc: 165.13 ng/ml

Instrument :
 ECD_P
 ClientSampleId :
 ICVPP021022



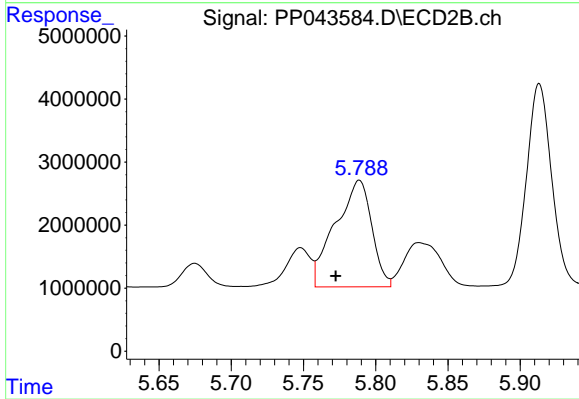
#27 AR-1254-2

R.T.: 5.340 min
 Delta R.T.: 0.000 min
 Response: 15522435
 Conc: 203.50 ng/ml



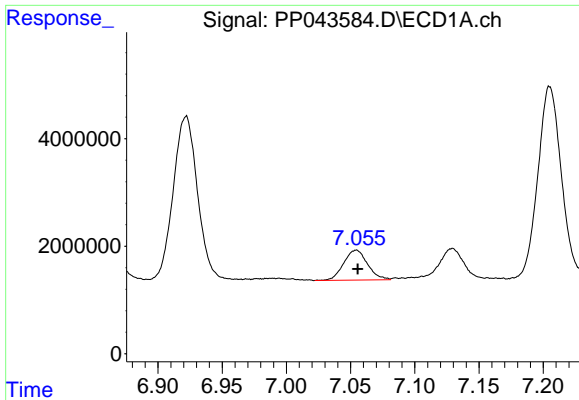
#28 AR-1254-3

R.T.: 6.741 min
 Delta R.T.: 0.000 min
 Response: 10687222
 Conc: 92.36 ng/ml



#28 AR-1254-3

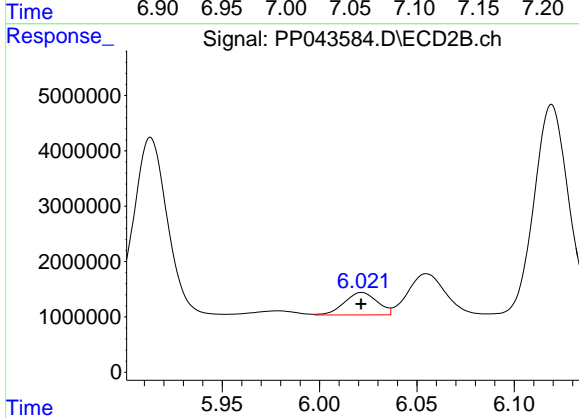
R.T.: 5.789 min
 Delta R.T.: 0.016 min
 Response: 29627950
 Conc: 241.75 ng/ml



#29 AR-1254-4

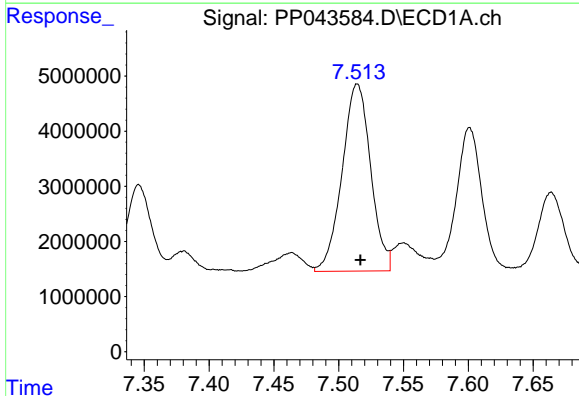
R.T.: 7.054 min
 Delta R.T.: -0.001 min
 Response: 7217106
 Conc: 90.40 ng/ml

Instrument :
 ECD_P
 ClientSampleId :
 ICVPP021022



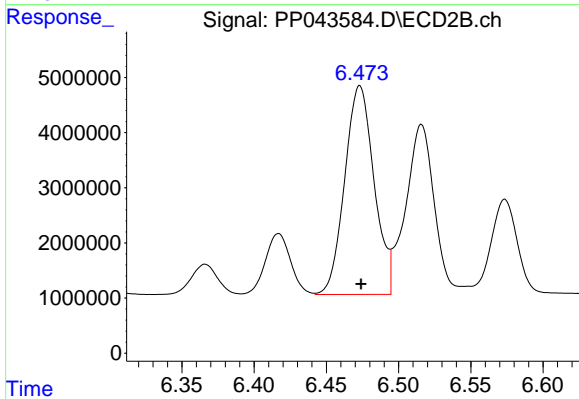
#29 AR-1254-4

R.T.: 6.022 min
 Delta R.T.: 0.000 min
 Response: 4765466
 Conc: 60.38 ng/ml



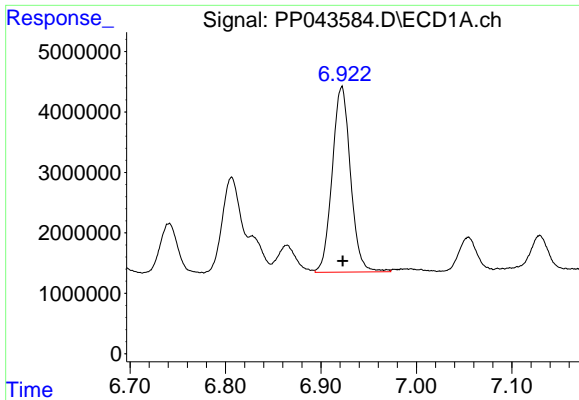
#30 AR-1254-5

R.T.: 7.514 min
 Delta R.T.: -0.003 min
 Response: 52058005
 Conc: 607.00 ng/ml



#30 AR-1254-5

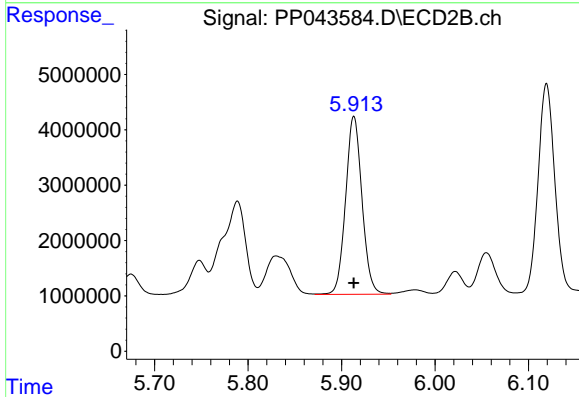
R.T.: 6.473 min
 Delta R.T.: 0.000 min
 Response: 53556537
 Conc: 463.11 ng/ml



#31 AR-1260-1

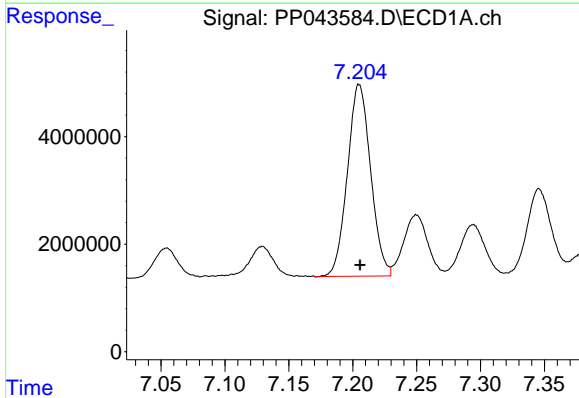
R.T.: 6.922 min
 Delta R.T.: 0.000 min
 Response: 41022802
 Conc: 489.87 ng/ml

Instrument :
 ECD_P
 ClientSampleId :
 ICVPP021022



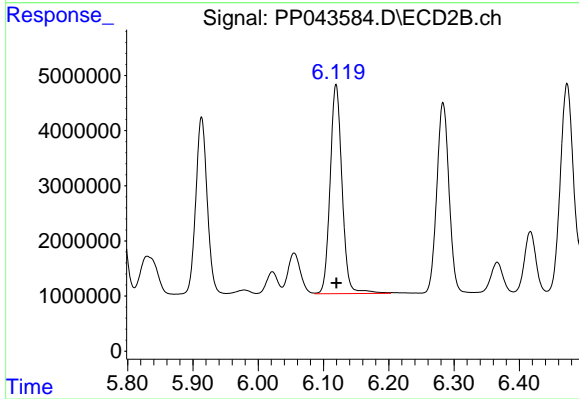
#31 AR-1260-1

R.T.: 5.913 min
 Delta R.T.: 0.000 min
 Response: 39159055
 Conc: 489.67 ng/ml



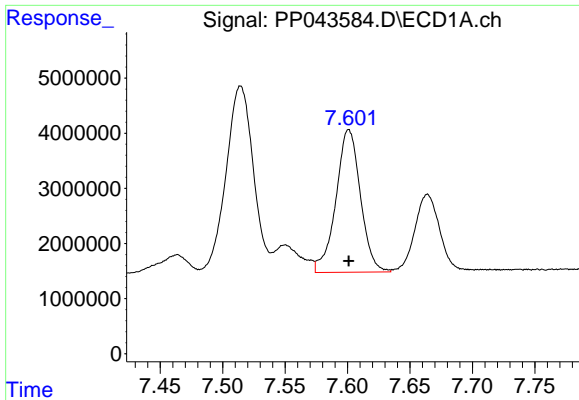
#32 AR-1260-2

R.T.: 7.205 min
 Delta R.T.: 0.000 min
 Response: 45153923
 Conc: 498.82 ng/ml



#32 AR-1260-2

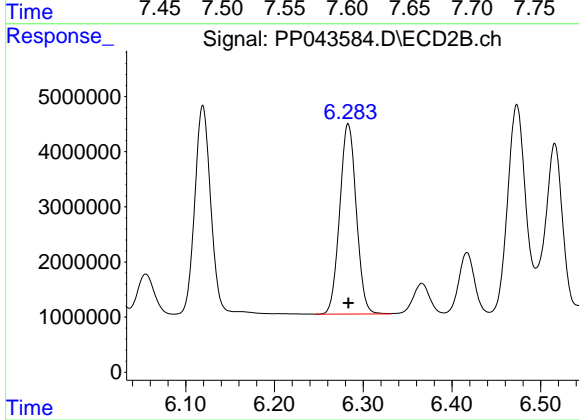
R.T.: 6.119 min
 Delta R.T.: 0.000 min
 Response: 48260916
 Conc: 494.21 ng/ml



#33 AR-1260-3

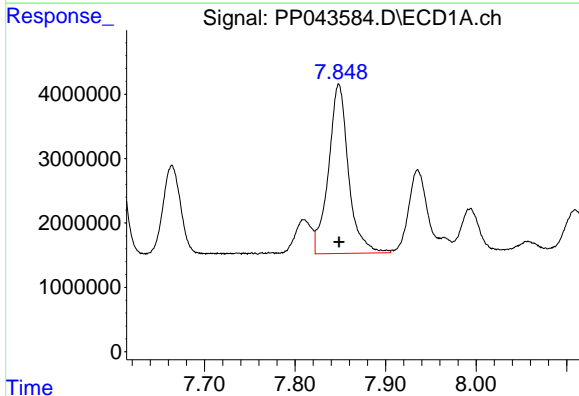
R.T.: 7.601 min
Delta R.T.: 0.000 min
Response: 35375623
Conc: 488.02 ng/ml

Instrument :
ECD_P
ClientSampleId :
ICVPP021022



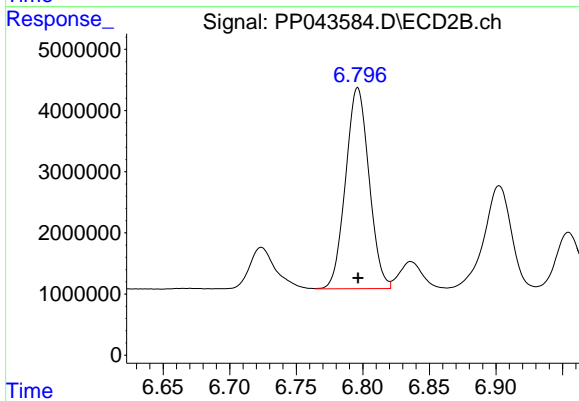
#33 AR-1260-3

R.T.: 6.283 min
Delta R.T.: 0.000 min
Response: 44851739
Conc: 491.30 ng/ml



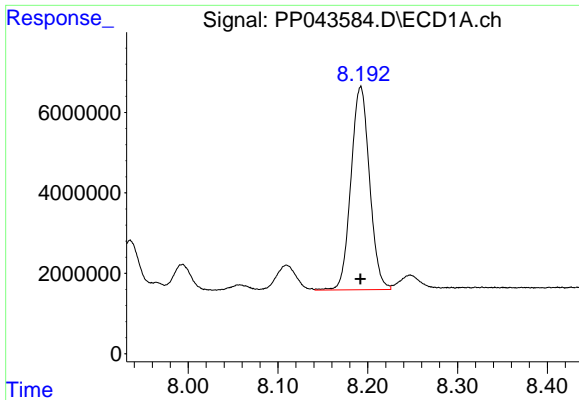
#34 AR-1260-4

R.T.: 7.848 min
Delta R.T.: 0.000 min
Response: 40414080
Conc: 470.72 ng/ml



#34 AR-1260-4

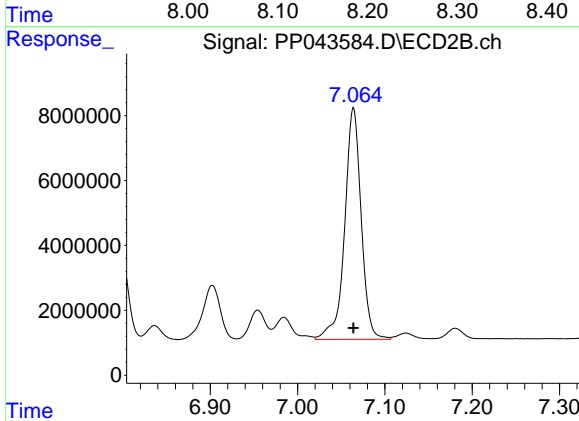
R.T.: 6.796 min
Delta R.T.: 0.000 min
Response: 40282670
Conc: 497.87 ng/ml



#35 AR-1260-5

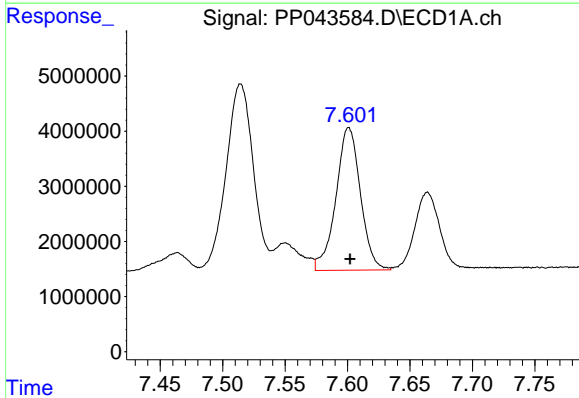
R.T.: 8.192 min
Delta R.T.: 0.000 min
Response: 72701419
Conc: 469.02 ng/ml

Instrument :
ECD_P
ClientSampleId :
ICVPP021022



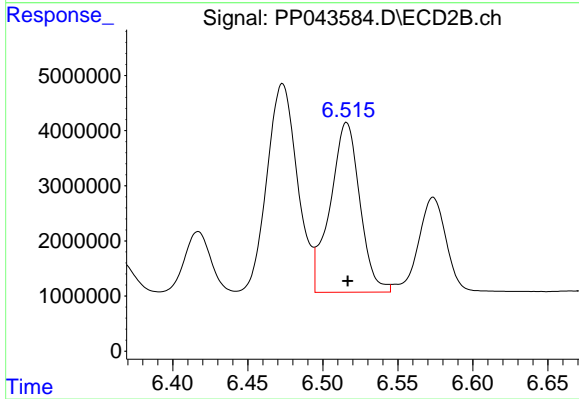
#35 AR-1260-5

R.T.: 7.064 min
Delta R.T.: 0.000 min
Response: 93789715
Conc: 507.34 ng/ml



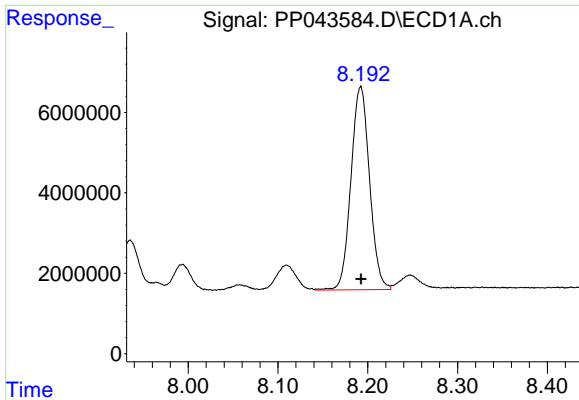
#36 AR-1262-1

R.T.: 7.601 min
Delta R.T.: -0.001 min
Response: 35375623
Conc: 358.27 ng/ml



#36 AR-1262-1

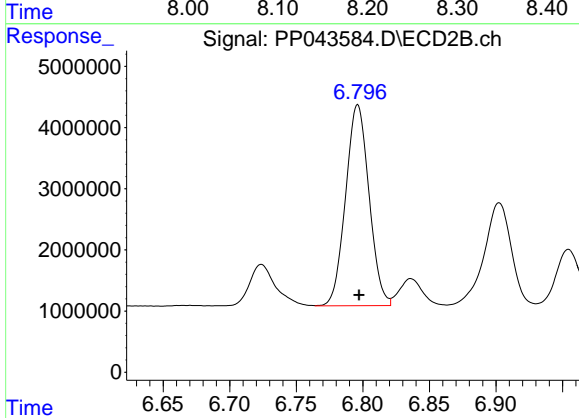
R.T.: 6.516 min
Delta R.T.: 0.000 min
Response: 42419621
Conc: 385.87 ng/ml



#37 AR-1262-2

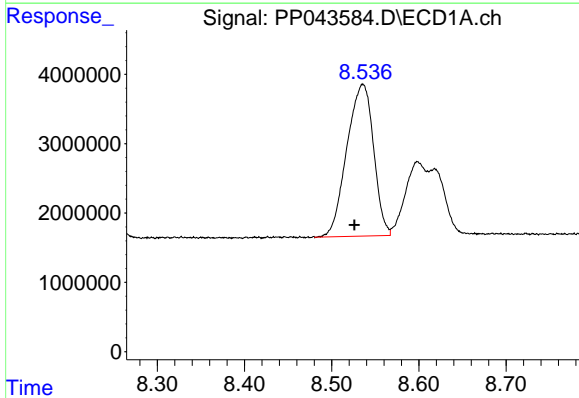
R.T.: 8.192 min
 Delta R.T.: 0.000 min
 Response: 72701419
 Conc: 450.33 ng/ml

Instrument :
 ECD_P
 ClientSampleId :
 ICVPP021022



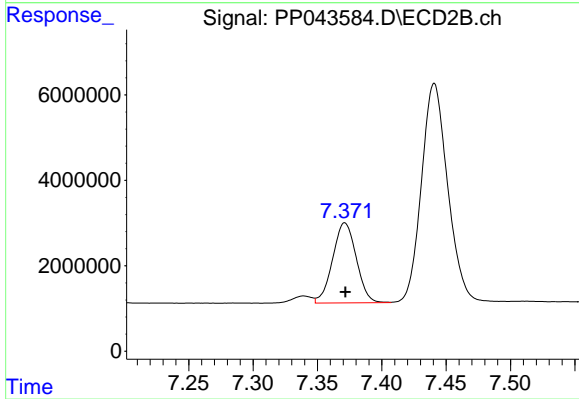
#37 AR-1262-2

R.T.: 6.796 min
 Delta R.T.: 0.000 min
 Response: 40282670
 Conc: 394.91 ng/ml



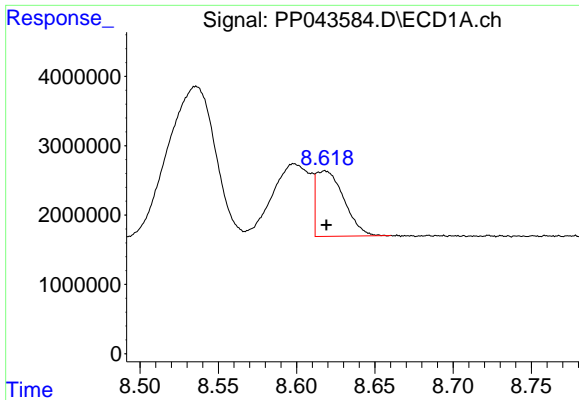
#38 AR-1262-3

R.T.: 8.536 min
 Delta R.T.: 0.010 min
 Response: 46543164
 Conc: 425.44 ng/ml



#38 AR-1262-3

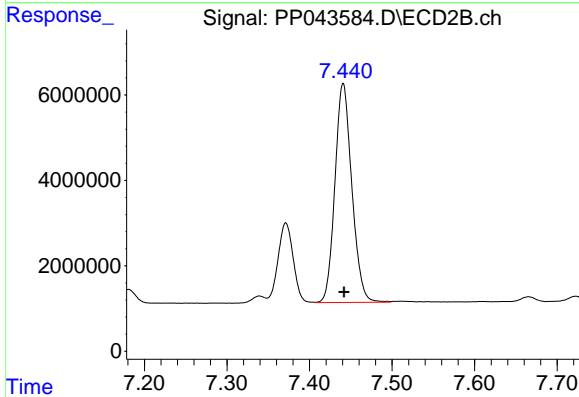
R.T.: 7.371 min
 Delta R.T.: 0.000 min
 Response: 23992281
 Conc: 281.52 ng/ml



#39 AR-1262-4

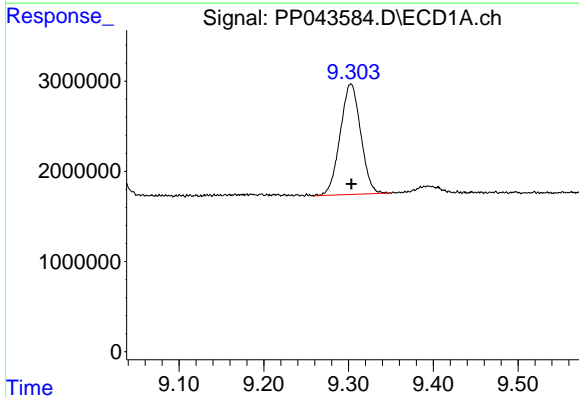
R.T.: 8.618 min
 Delta R.T.: 0.000 min
 Response: 11692004
 Conc: 243.80 ng/ml

Instrument :
 ECD_P
 ClientSampleId :
 ICVPP021022



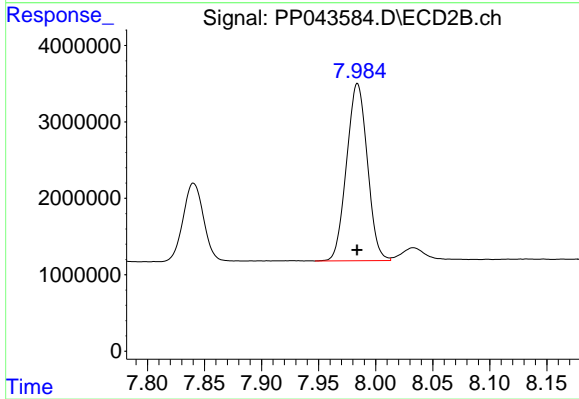
#39 AR-1262-4

R.T.: 7.441 min
 Delta R.T.: 0.000 min
 Response: 72967511
 Conc: 469.81 ng/ml



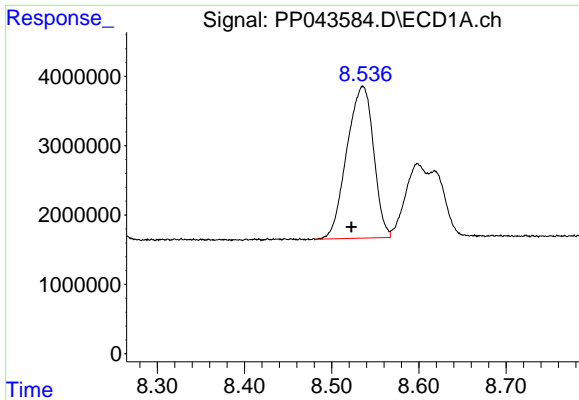
#40 AR-1262-5

R.T.: 9.303 min
 Delta R.T.: 0.000 min
 Response: 20666302
 Conc: 371.10 ng/ml



#40 AR-1262-5

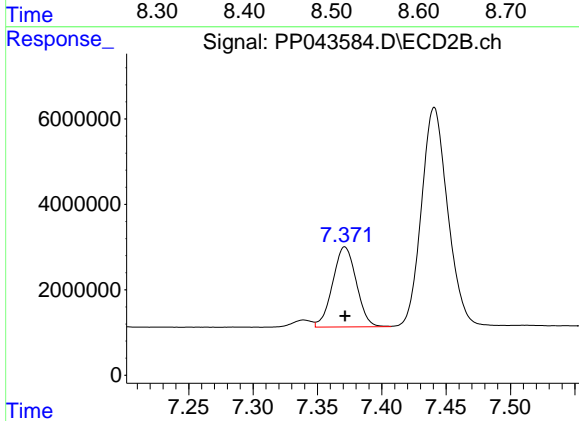
R.T.: 7.984 min
 Delta R.T.: 0.000 min
 Response: 29379233
 Conc: 377.65 ng/ml



#41 AR-1268-1

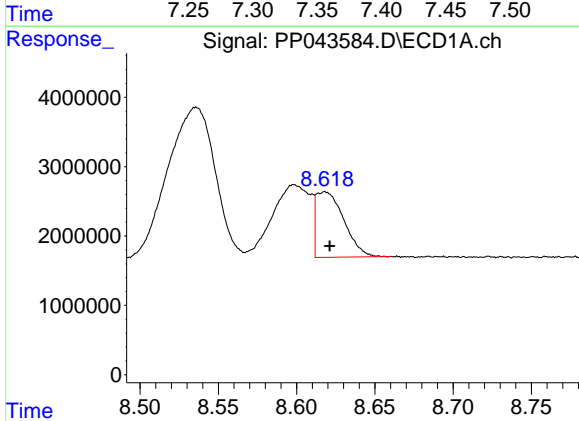
R.T.: 8.536 min
 Delta R.T.: 0.013 min
 Response: 46543164
 Conc: 238.76 ng/ml

Instrument :
 ECD_P
 ClientSampleId :
 ICVPP021022



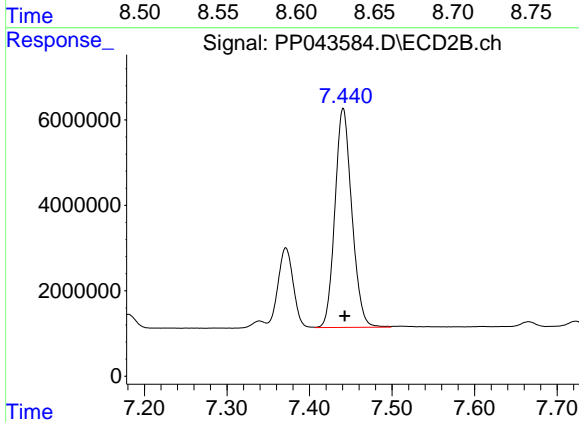
#41 AR-1268-1

R.T.: 7.371 min
 Delta R.T.: 0.000 min
 Response: 23992281
 Conc: 94.70 ng/ml



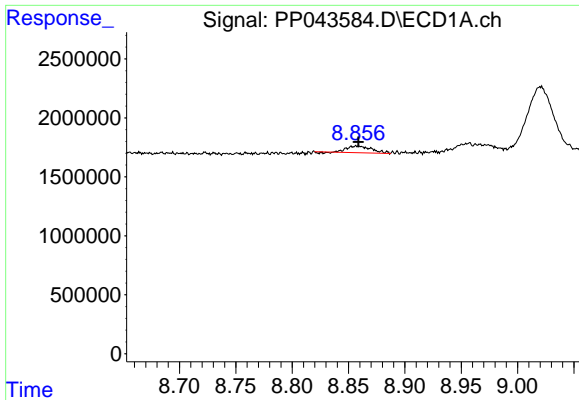
#42 AR-1268-2

R.T.: 8.618 min
 Delta R.T.: -0.003 min
 Response: 11692004
 Conc: 66.80 ng/ml



#42 AR-1268-2

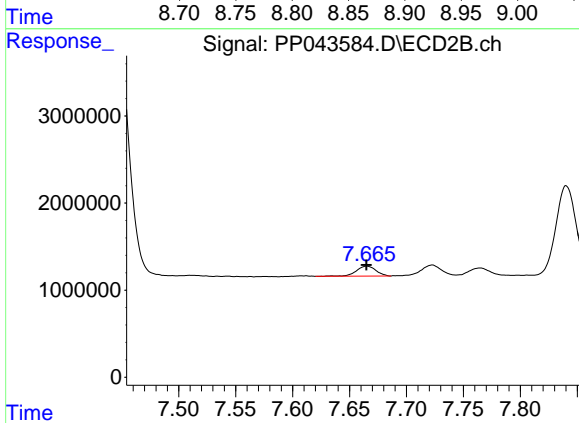
R.T.: 7.441 min
 Delta R.T.: -0.002 min
 Response: 72967511
 Conc: 322.92 ng/ml



#43 AR-1268-3

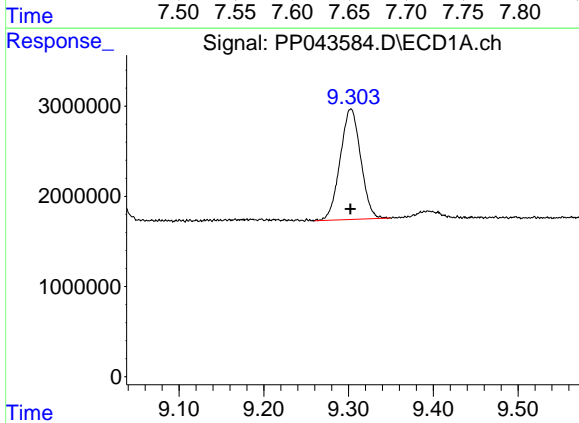
R.T.: 8.857 min
 Delta R.T.: -0.001 min
 Response: 816208
 Conc: 5.29 ng/ml

Instrument :
 ECD_P
 ClientSampleId :
 ICVPP021022



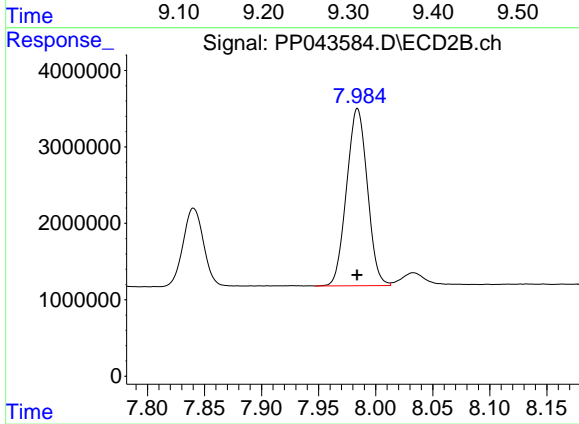
#43 AR-1268-3

R.T.: 7.665 min
 Delta R.T.: 0.000 min
 Response: 1355646
 Conc: 6.96 ng/ml



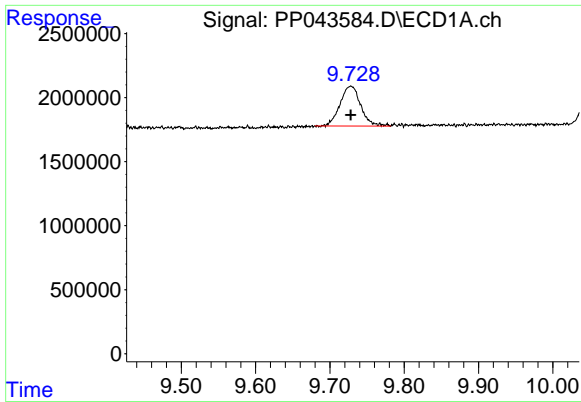
#44 AR-1268-4

R.T.: 9.303 min
 Delta R.T.: 0.000 min
 Response: 20666302
 Conc: 330.29 ng/ml



#44 AR-1268-4

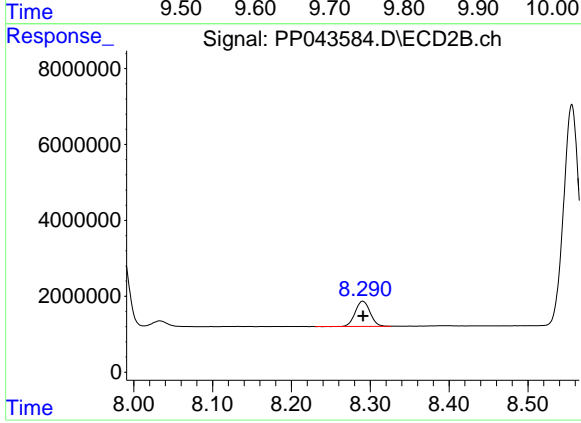
R.T.: 7.984 min
 Delta R.T.: 0.000 min
 Response: 29379233
 Conc: 326.70 ng/ml



#45 AR-1268-5

R.T.: 9.728 min
Delta R.T.: 0.000 min
Response: 6007683
Conc: 13.22 ng/ml

Instrument :
ECD_P
ClientSampleId :
ICVPP021022



#45 AR-1268-5

R.T.: 8.290 min
Delta R.T.: 0.000 min
Response: 8703364
Conc: 14.48 ng/ml