

Data Path : Z:\pestpcbsrv\HPCHEM1\ECD_P\Data\PP021023\
 Data File : PP055533.D
 Signal(s) : Signal #1: ECD1A.ch Signal #2: ECD2B.ch
 Acq On : 10 Feb 2023 14:48
 Operator : YP\AJ
 Sample : 01510-07
 Misc :
 ALS Vial : 14 Sample Multiplier: 1

Instrument :
 ECD_P
 ClientSampleId :
 JPP-51B-020823

Integration File signal 1: autoint1.e
 Integration File signal 2: autoint2.e
 Quant Time: Feb 10 21:48:14 2023
 Quant Method : Z:\pestpcbsrv\HPCHEM1\ECD_P\methods\PP012423.M
 Quant Title : GC EXTRACTABLES
 QLast Update : Tue Jan 24 03:37:45 2023
 Response via : Initial Calibration
 Integrator: ChemStation

Volume Inj. : 2 µl
 Signal #1 Phase : ZB-MR1 Signal #2 Phase: ZB-MR2
 Signal #1 Info : 30Mx0.32mmx 0.50µ Signal #2 Info : 30M x 0.32mm x 0.25µm

Compound	RT#1	RT#2	Resp#1	Resp#2	ng/ml	ng/ml

System Monitoring Compounds						
1) SA Tetrachlo...	4.328	3.574	25130617	22406661	14.453	14.926
2) SA Decachlor...	10.085	8.584	20309232	16472820	11.728	12.197

Target Compounds

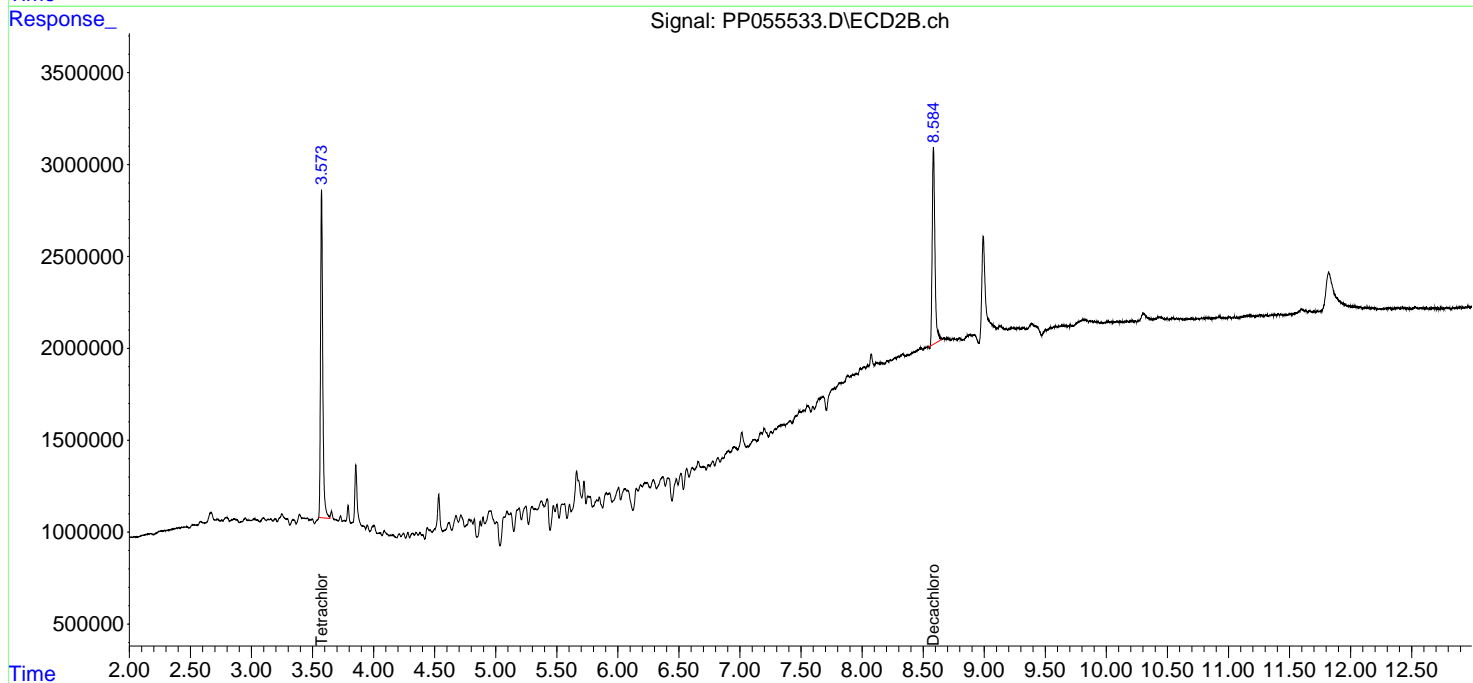
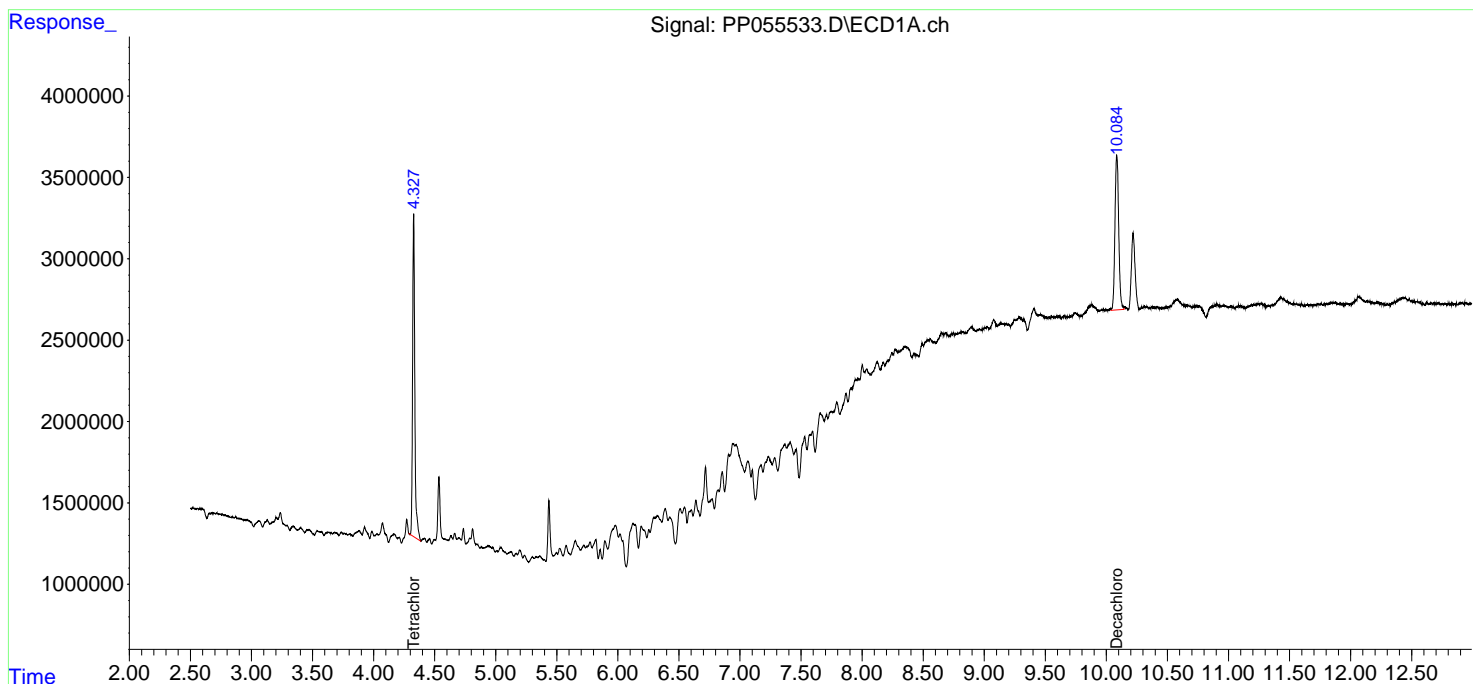
(f)=RT Delta > 1/2 Window (#)=Amounts differ by > 25% (m)=manual int.

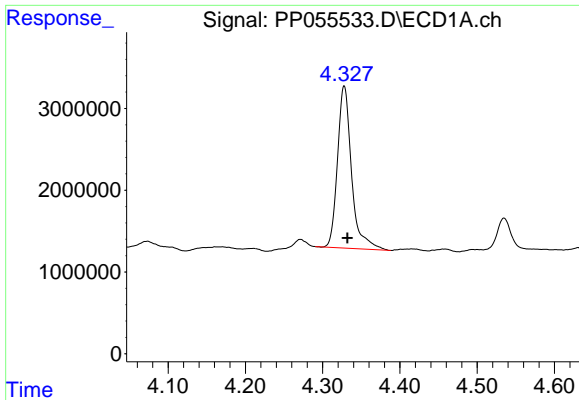
Data Path : Z:\pestpcbsrv\HPCHEM1\ECD_P\Data\PP021023\
 Data File : PP055533.D
 Signal(s) : Signal #1: ECD1A.ch Signal #2: ECD2B.ch
 Acq On : 10 Feb 2023 14:48
 Operator : YP\AJ
 Sample : 01510-07
 Misc :
 ALS Vial : 14 Sample Multiplier: 1

Instrument :
 ECD_P
 ClientSampleId :
 JPP-51B-020823

Integration File signal 1: autoint1.e
 Integration File signal 2: autoint2.e
 Quant Time: Feb 10 21:48:14 2023
 Quant Method : Z:\pestpcbsrv\HPCHEM1\ECD_P\methods\PP012423.M
 Quant Title : GC EXTRACTABLES
 QLast Update : Tue Jan 24 03:37:45 2023
 Response via : Initial Calibration
 Integrator: ChemStation

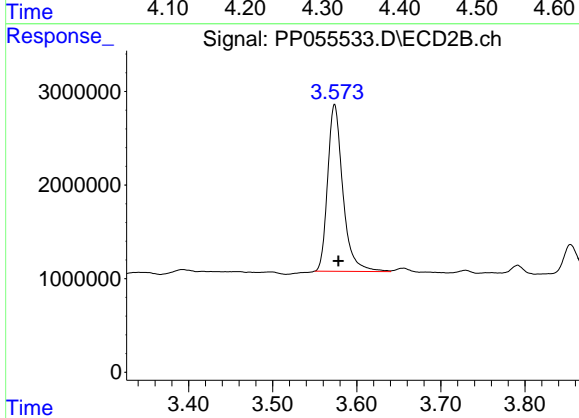
Volume Inj. : 2 µl
 Signal #1 Phase : ZB-MR1 Signal #2 Phase: ZB-MR2
 Signal #1 Info : 30Mx0.32mmx 0.50µ Signal #2 Info : 30M x 0.32mm x 0.25µm



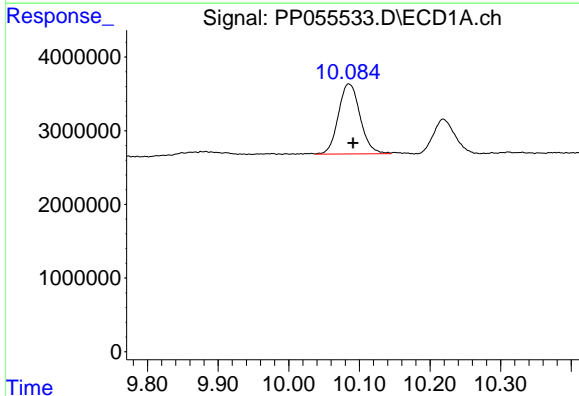


#1 Tetrachloro-m-xylene
 R.T.: 4.328 min
 Delta R.T.: -0.004 min
 Response: 25130617
 Conc: 14.45 ng/ml

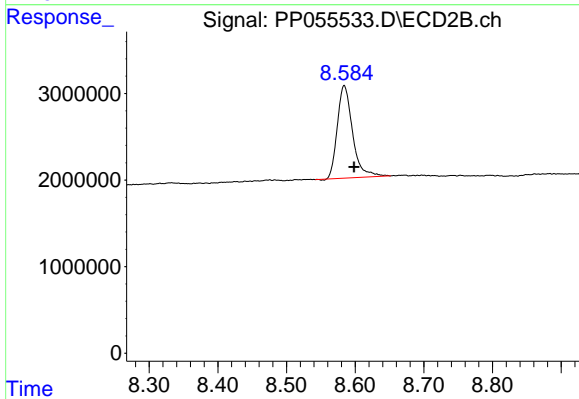
Instrument :
 ECD_P
 ClientSampleId :
 JPP-51B-020823



#1 Tetrachloro-m-xylene
 R.T.: 3.574 min
 Delta R.T.: -0.005 min
 Response: 22406661
 Conc: 14.93 ng/ml



#2 Decachlorobiphenyl
 R.T.: 10.085 min
 Delta R.T.: -0.006 min
 Response: 20309232
 Conc: 11.73 ng/ml



#2 Decachlorobiphenyl
 R.T.: 8.584 min
 Delta R.T.: -0.014 min
 Response: 16472820
 Conc: 12.20 ng/ml