

Data Path : Z:\pestpcbsrv\HPCHEM1\ECD_P\Data\PP021119\
Data File : PP029124.D
Signal(s) : Signal #1: ECD1A.CH Signal #2: ECD2B.CH
Acq On : 11 Feb 2019 10:02
Operator : EI\MA
Sample : HEXANE
Misc : hexane
ALS Vial : 1 Sample Multiplier: 1

Instrument :
ECD_P
ClientSampleId :
HEXANE

Integration File signal 1: autoint1.e
Integration File signal 2: autoint2.e
Quant Time: Feb 12 05:52:48 2019
Quant Method : Z:\pestpcbsrv\HPCHEM1\ECD_P\methods\PP021119.M
Quant Title : 8080.M
QLast Update : Tue Feb 12 05:52:04 2019
Response via : Initial Calibration
Integrator: ChemStation 6890 Scale Mode: Large solvent peaks clipped

Volume Inj. : 2 µl
Signal #1 Phase : ZB-CLPesticides-1 Signal #2 Phase: ZB-CLPesticides-2
Signal #1 Info : 30M x 0.32mm x 0.5 Signal #2 Info : 30M x 0.32mm x 0.25µm

Compound	RT#1	RT#2	Resp#1	Resp#2	ng/ml	ng/ml
----------	------	------	--------	--------	-------	-------

System Monitoring Compounds

Target Compounds

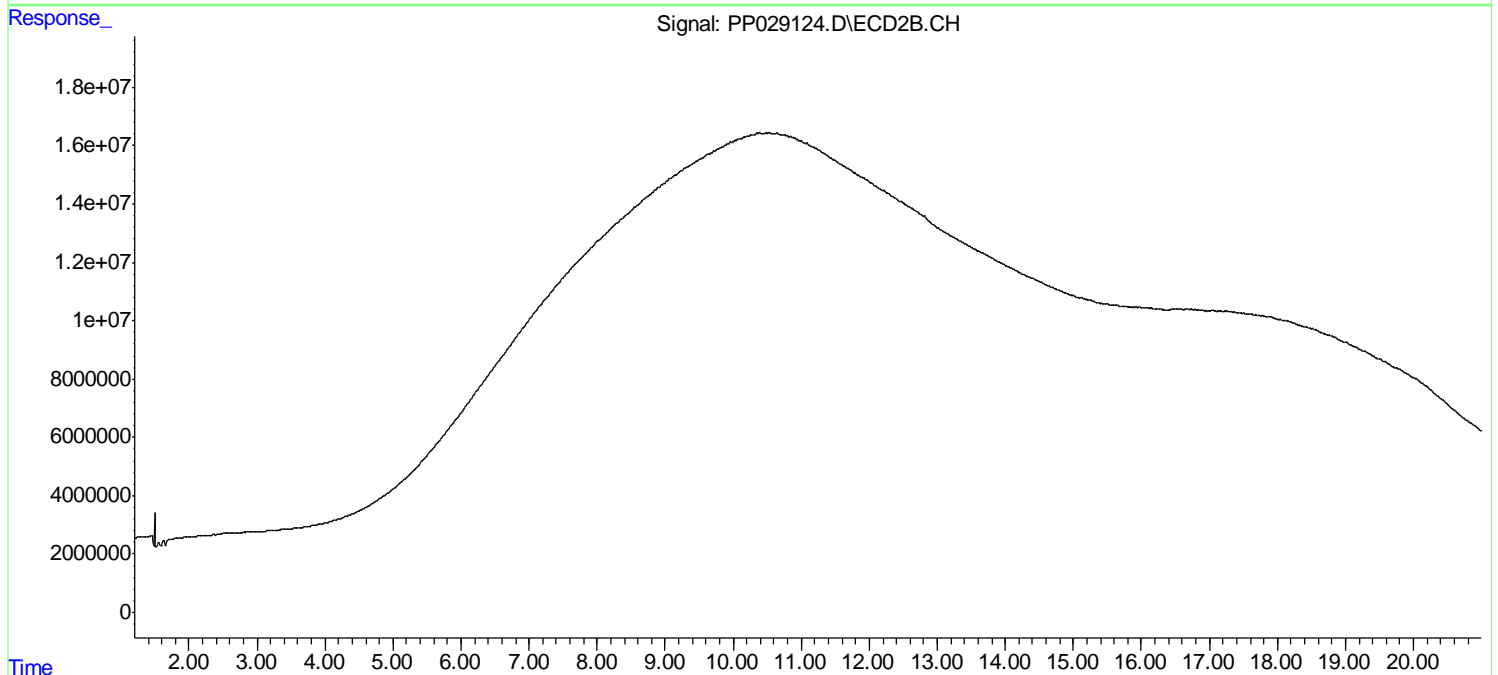
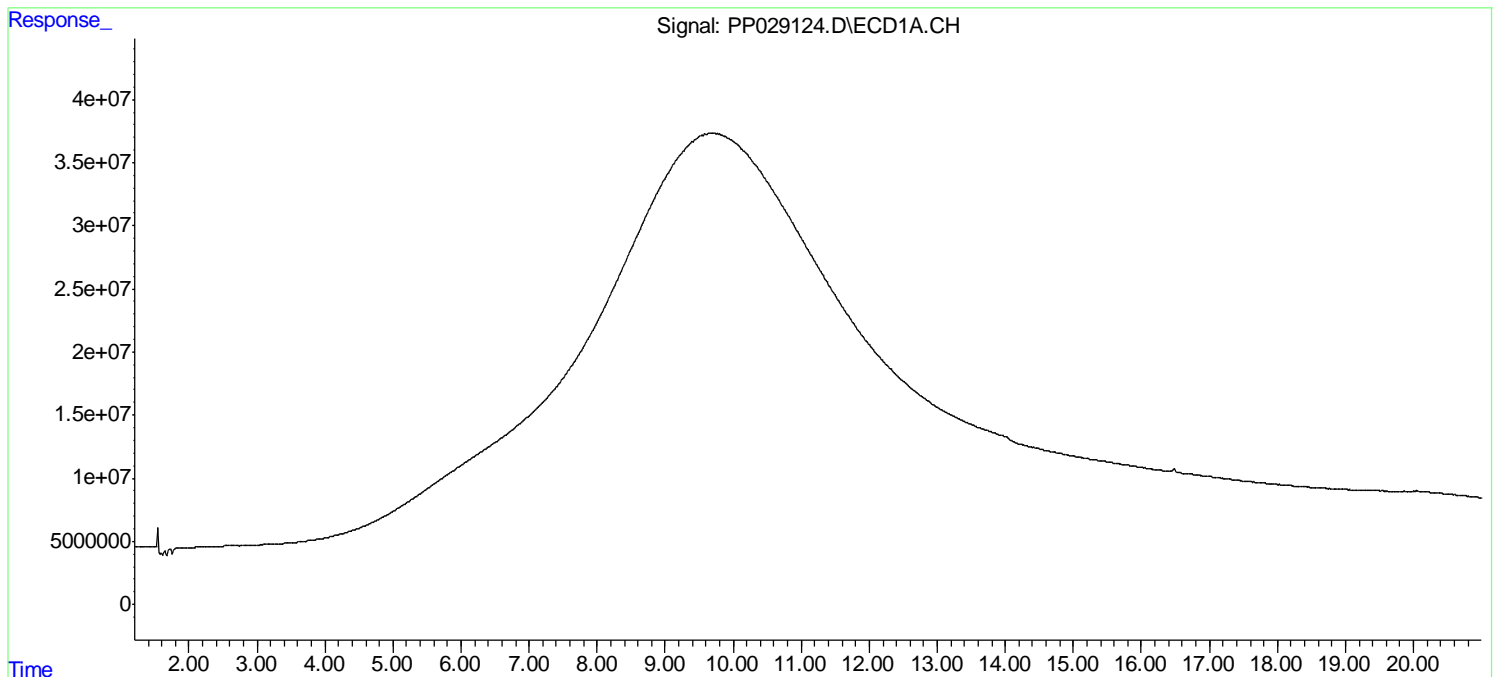
(f)=RT Delta > 1/2 Window (#)=Amounts differ by > 25% (m)=manual int.

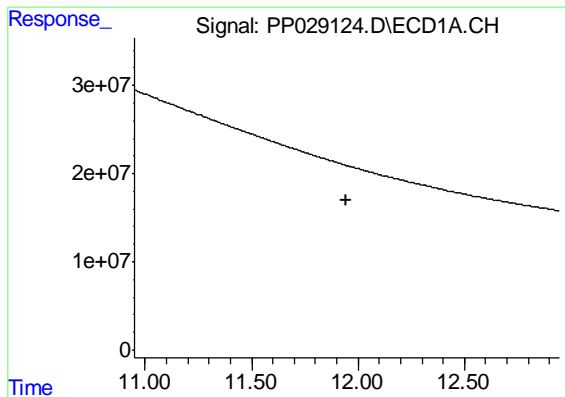
Data Path : Z:\pestpcbsrv\HPCHEM1\ECD_P\Data\PP021119\
Data File : PP029124.D
Signal(s) : Signal #1: ECD1A.CH Signal #2: ECD2B.CH
Acq On : 11 Feb 2019 10:02
Operator : EI\MA
Sample : HEXANE
Misc : hexane
ALS Vial : 1 Sample Multiplier: 1

Instrument :
ECD_P
ClientSampleId :
HEXANE

Integration File signal 1: autoint1.e
Integration File signal 2: autoint2.e
Quant Time: Feb 12 05:52:48 2019
Quant Method : Z:\pestpcbsrv\HPCHEM1\ECD_P\methods\PP021119.M
Quant Title : 8080.M
QLast Update : Tue Feb 12 05:52:04 2019
Response via : Initial Calibration
Integrator: ChemStation 6890 Scale Mode: Large solvent peaks clipped

Volume Inj. : 2 µl
Signal #1 Phase : ZB-CLPesticides-1 Signal #2 Phase: ZB-CLPesticides-2
Signal #1 Info : 30M x 0.32mm x0.5 Signal #2 Info : 30M x 0.32mm x 0.25µm

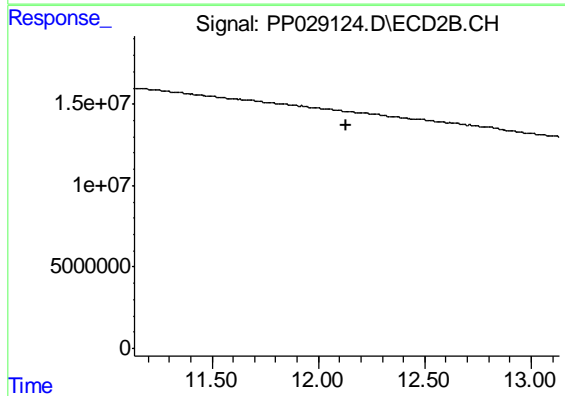




#4 2,4-DCAA

R.T.: 0.000 min
Exp R.T. : 11.947 min
Response: 0
Conc: N.D.

Instrument :
ECD_P
ClientSampleId :
HEXANE



#4 2,4-DCAA

R.T.: 0.000 min
Exp R.T. : 12.133 min
Response: 0
Conc: N.D.