

Data Path : Z:\pestpcbsrv\HPCHEM1\ECD_P\Data\PP021119\
 Data File : PP029125.D
 Signal(s) : Signal #1: ECD1A.CH Signal #2: ECD2B.CH
 Acq On : 11 Feb 2019 12:35
 Operator : EI\MA
 Sample : I.BLK
 Misc : hexane
 ALS Vial : 2 Sample Multiplier: 1

Instrument :
 ECD_P
 ClientSampleId :
 I.BLK

Integration File signal 1: autoint1.e
 Integration File signal 2: autoint2.e
 Quant Time: Feb 12 05:52:58 2019
 Quant Method : Z:\pestpcbsrv\HPCHEM1\ECD_P\methods\PP021119.M
 Quant Title : 8080.M
 QLast Update : Tue Feb 12 05:52:04 2019
 Response via : Initial Calibration
 Integrator: ChemStation 6890 Scale Mode: Large solvent peaks clipped

Volume Inj. : 2 µl
 Signal #1 Phase : ZB-CLPesticides-1 Signal #2 Phase: ZB-CLPesticides-2
 Signal #1 Info : 30M x 0.32mm x0.5 Signal #2 Info : 30M x 0.32mm x 0.25µm

Compound	RT#1	RT#2	Resp#1	Resp#2	ng/ml	ng/ml
----------	------	------	--------	--------	-------	-------

 System Monitoring Compounds

4) S	2,4-DCAA	11.962	12.137	35015174	9427213	1545.775	322.163 #
------	----------	--------	--------	----------	---------	----------	-----------

Target Compounds

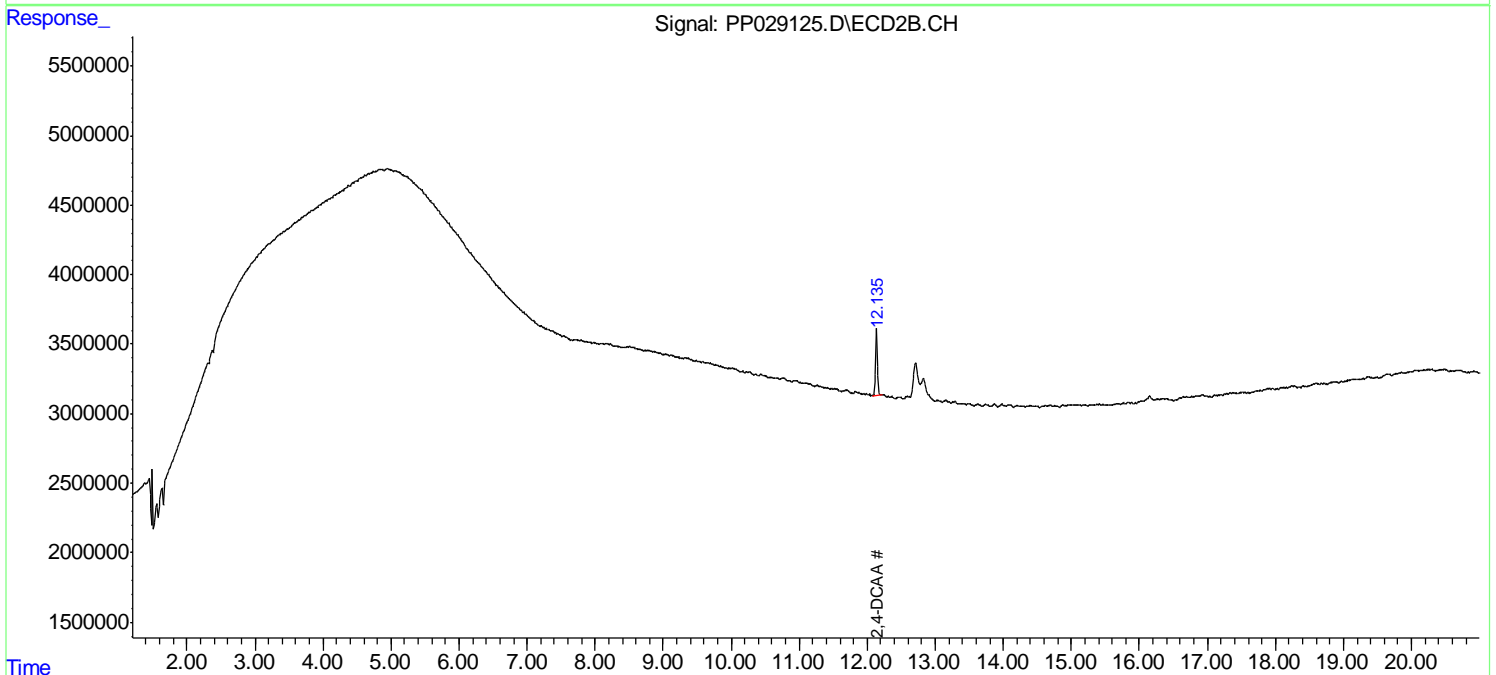
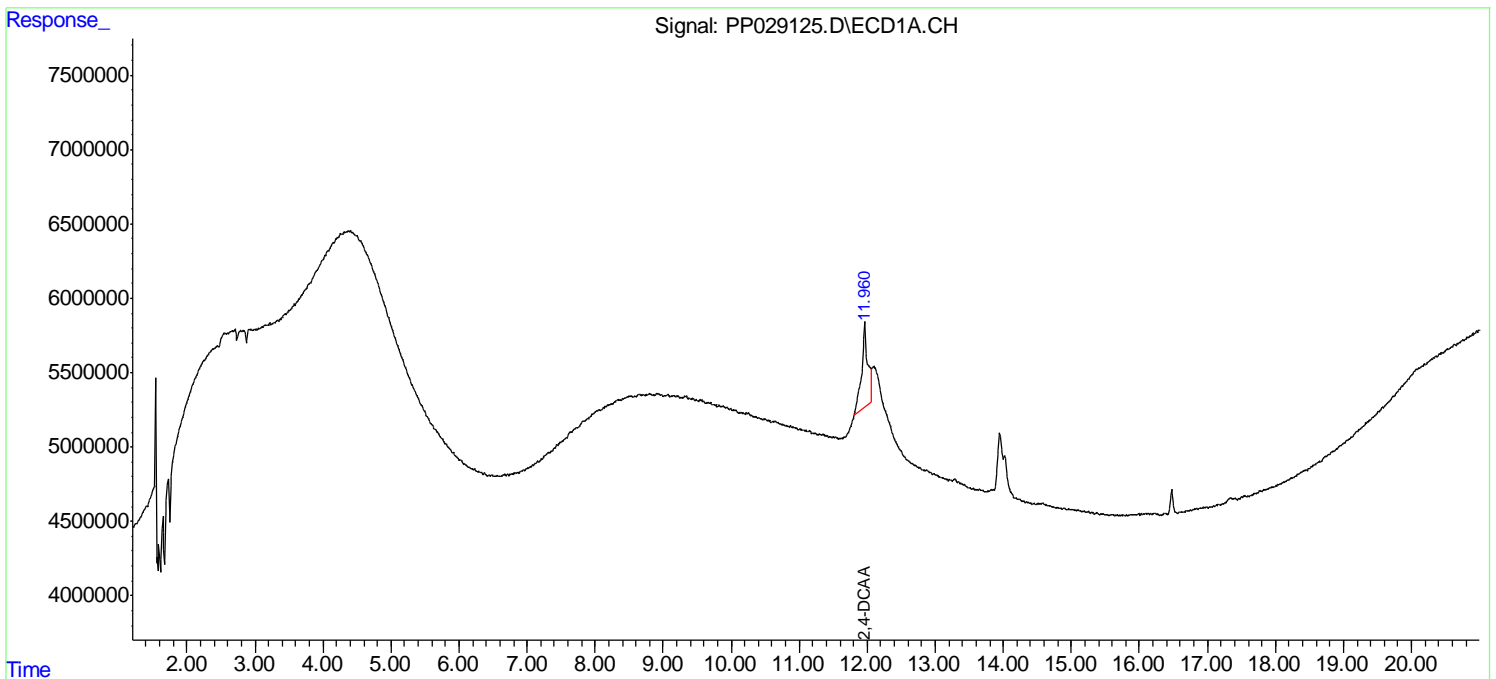
(f)=RT Delta > 1/2 Window (#)=Amounts differ by > 25% (m)=manual int.

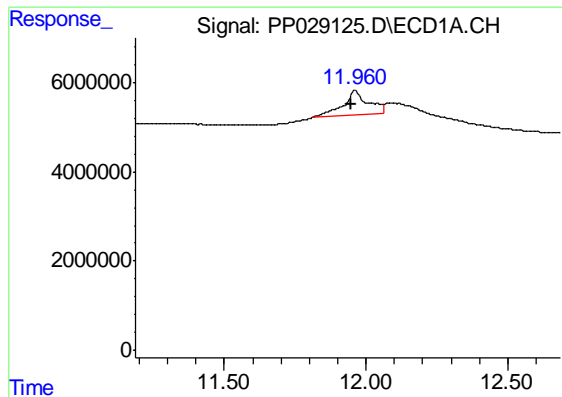
Data Path : Z:\pestpcbsrv\HPCHEM1\ECD_P\Data\PP021119\
 Data File : PP029125.D
 Signal(s) : Signal #1: ECD1A.CH Signal #2: ECD2B.CH
 Acq On : 11 Feb 2019 12:35
 Operator : EI\MA
 Sample : I.BLK
 Misc : hexane
 ALS Vial : 2 Sample Multiplier: 1

Instrument :
 ECD_P
 ClientSampled :
 I.BLK

Integration File signal 1: autoint1.e
 Integration File signal 2: autoint2.e
 Quant Time: Feb 12 05:52:58 2019
 Quant Method : Z:\pestpcbsrv\HPCHEM1\ECD_P\methods\PP021119.M
 Quant Title : 8080.M
 QLast Update : Tue Feb 12 05:52:04 2019
 Response via : Initial Calibration
 Integrator: ChemStation 6890 Scale Mode: Large solvent peaks clipped

Volume Inj. : 2 µl
 Signal #1 Phase : ZB-CLPesticides-1 Signal #2 Phase: ZB-CLPesticides-2
 Signal #1 Info : 30M x 0.32mm x0.5 Signal #2 Info : 30M x 0.32mm x 0.25µm

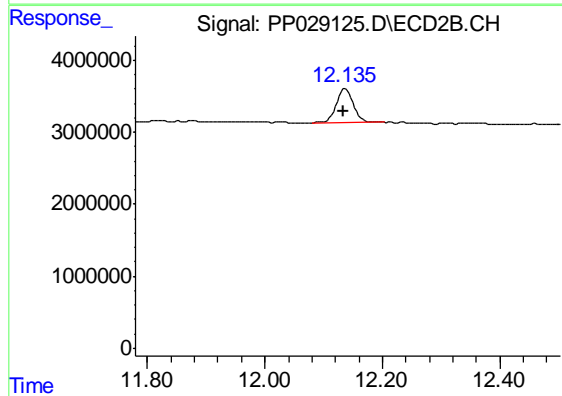




#4 2,4-DCAA

R.T.: 11.962 min
Delta R.T.: 0.015 min
Response: 35015174
Conc: 1545.78 ng/ml

Instrument :
ECD_P
ClientSampleId :
I.BLK



#4 2,4-DCAA

R.T.: 12.137 min
Delta R.T.: 0.004 min
Response: 9427213
Conc: 322.16 ng/ml