

Data Path : Z:\pestpcbsrv\HPCHEM1\ECD_P\Data\PP021121\
 Data File : PP033271.D
 Signal(s) : Signal #1: ECD1A.CH Signal #2: ECD2B.CH
 Acq On : 11 Feb 2021 14:33
 Operator : DD\AJ
 Sample : M1367-05 10X
 Misc :
 ALS Vial : 15 Sample Multiplier: 1

Instrument :
 ECD_P
 ClientSampleId :

Integration File signal 1: autoint1.e
 Integration File signal 2: autoint2.e
 Quant Time: Feb 12 00:54:24 2021
 Quant Method : Z:\pestpcbsrv\HPCHEM1\ECD_P\methods\PP020821.M
 Quant Title : GC EXTRACTABLES
 QLast Update : Tue Feb 09 04:00:57 2021
 Response via : Initial Calibration
 Integrator: ChemStation 6890 Scale Mode: Small noise peaks clipped

Volume Inj. : 2 µl
 Signal #1 Phase : ZB-MR1 Signal #2 Phase: ZB-MR2
 Signal #1 Info : 30Mx0.32mmx 0.50µ Signal #2 Info : 30M x 0.32mm x 0.25µm

Compound	RT#1	RT#2	Resp#1	Resp#2	ng/ml	ng/ml

System Monitoring Compounds						
1) SA Tetrachlo...	4.728	4.000	128000	85634	2.087	2.094
2) SA Decachlor...	10.546	9.263	123509	90767	2.835	2.709
Target Compounds						
29) L6 AR-1254-4	7.861f	0.000	23457	0	10.140	N.D. #
32) L7 AR-1260-2	7.965	0.000	12137	0	4.153	N.D. #
33) L7 AR-1260-3	8.308f	0.000	7104	0	2.776	N.D. #
34) L7 AR-1260-4	8.571	0.000	30124	0	12.331	N.D. #
35) L7 AR-1260-5	8.871	7.905	24792	20931	4.606	5.440
36) L8 AR-1262-1	8.308f	0.000	7104	0	1.869	N.D. #
37) L8 AR-1262-2	8.871	7.905	24792	20931	3.960	4.760

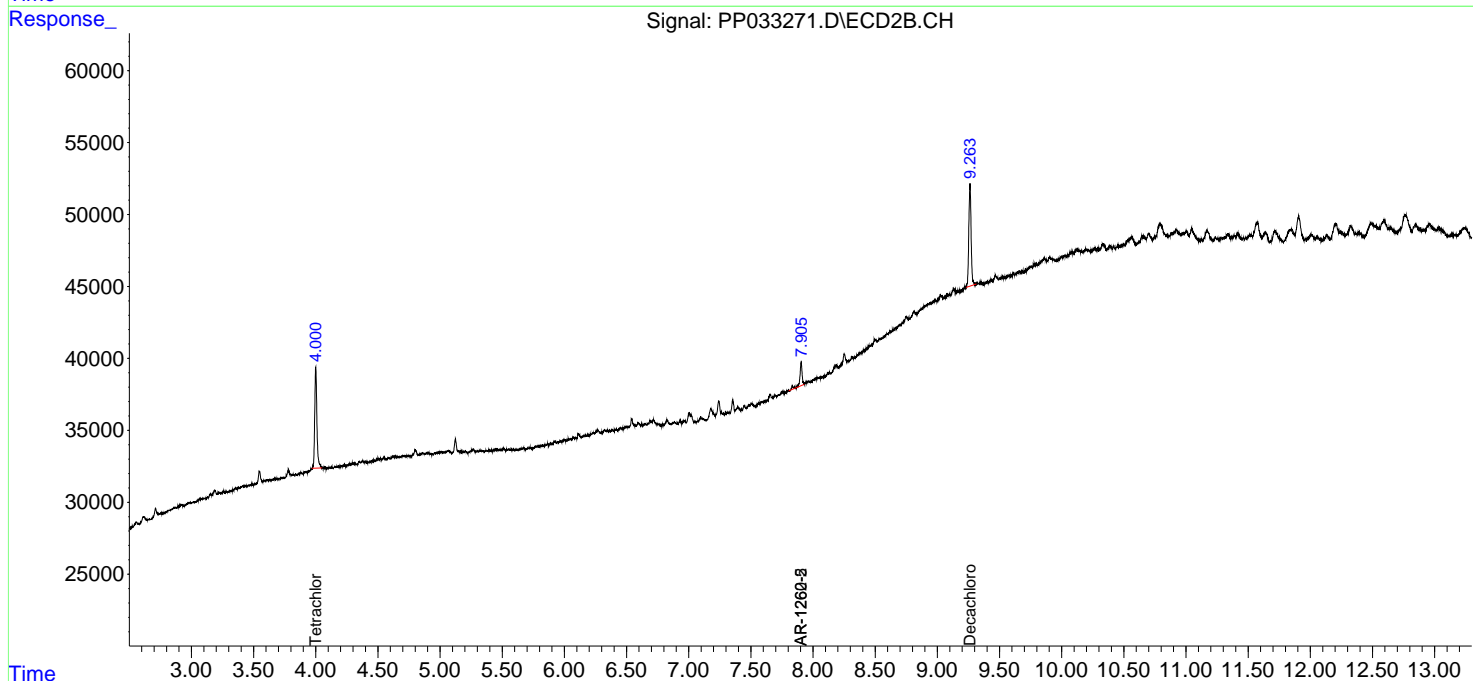
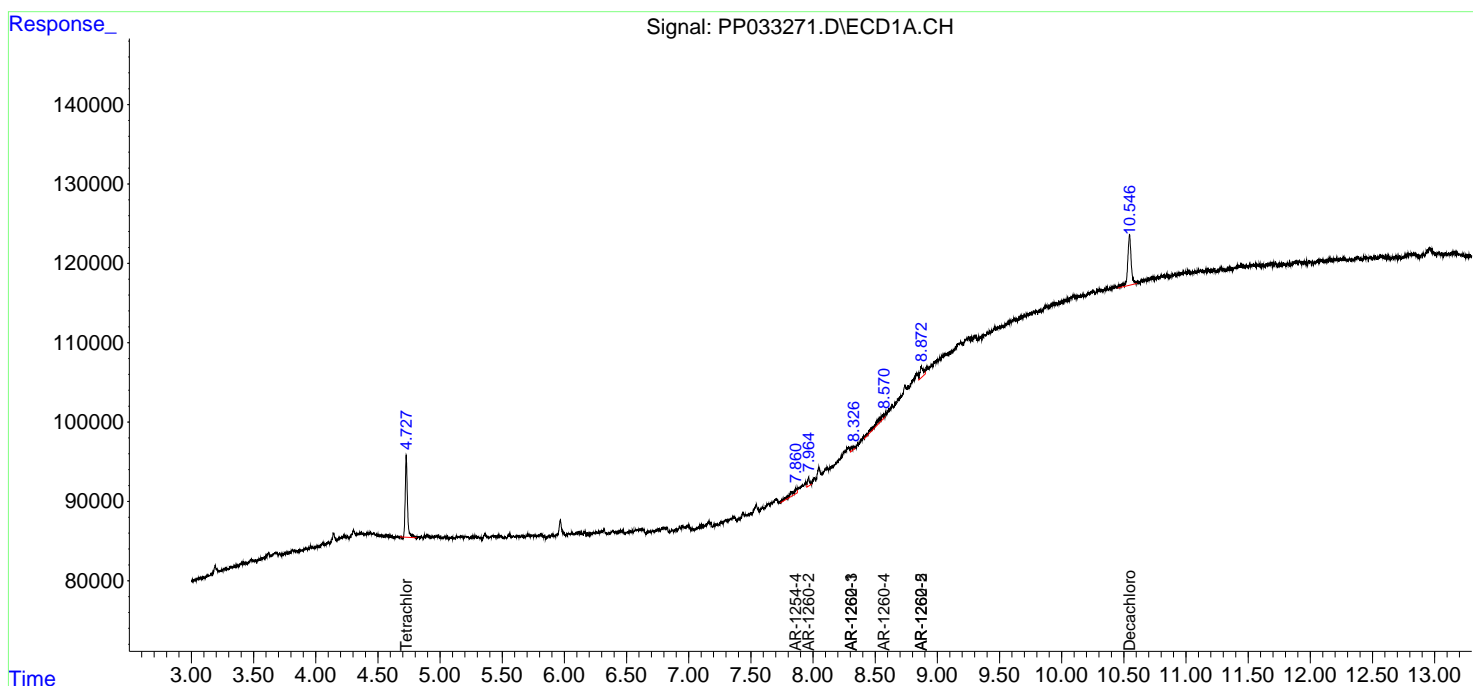
(f)=RT Delta > 1/2 Window (#)=Amounts differ by > 25% (m)=manual int.

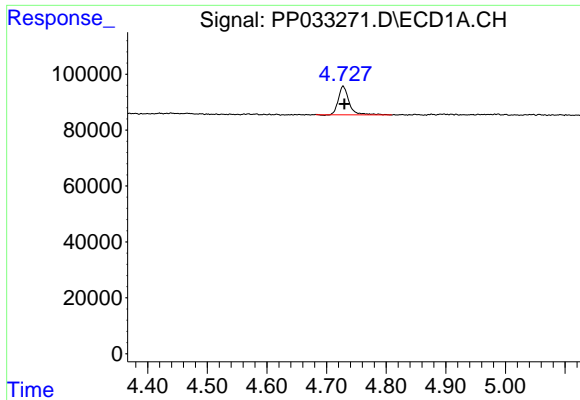
Data Path : Z:\pestpcbsrv\HPCHEM1\ECD_P\Data\PP021121\
 Data File : PP033271.D
 Signal(s) : Signal #1: ECD1A.CH Signal #2: ECD2B.CH
 Acq On : 11 Feb 2021 14:33
 Operator : DD\AJ
 Sample : M1367-05 10X
 Misc :
 ALS Vial : 15 Sample Multiplier: 1

Instrument :
 ECD_P
 ClientSampled :

Integration File signal 1: autoint1.e
 Integration File signal 2: autoint2.e
 Quant Time: Feb 12 00:54:24 2021
 Quant Method : Z:\pestpcbsrv\HPCHEM1\ECD_P\methods\PP020821.M
 Quant Title : GC EXTRACTABLES
 QLast Update : Tue Feb 09 04:00:57 2021
 Response via : Initial Calibration
 Integrator: ChemStation 6890 Scale Mode: Small noise peaks clipped

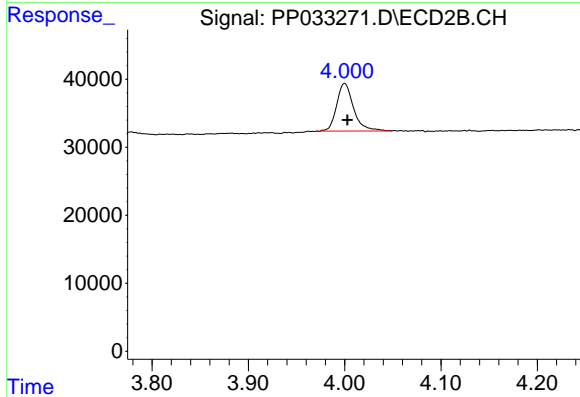
Volume Inj. : 2 µl
 Signal #1 Phase : ZB-MR1 Signal #2 Phase: ZB-MR2
 Signal #1 Info : 30Mx0.32mmx 0.50µ Signal #2 Info : 30M x 0.32mm x 0.25µm



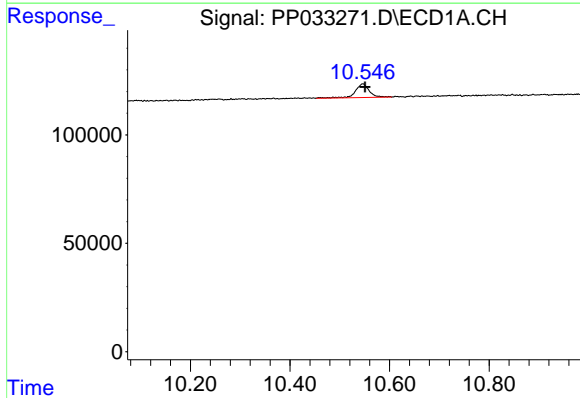


#1 Tetrachloro-m-xylene
 R.T.: 4.728 min
 Delta R.T.: -0.002 min
 Response: 128000
 Conc: 2.09 ng/ml

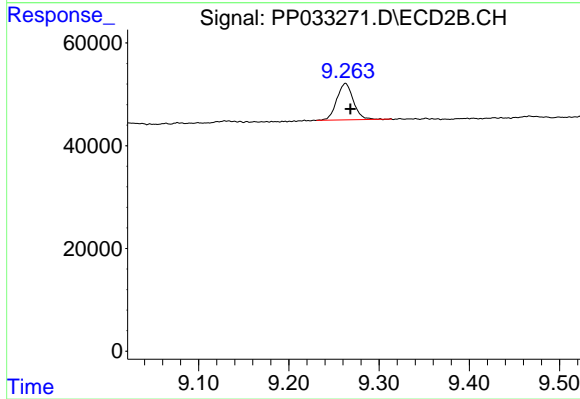
Instrument :
 ECD_P
 ClientSampleId :



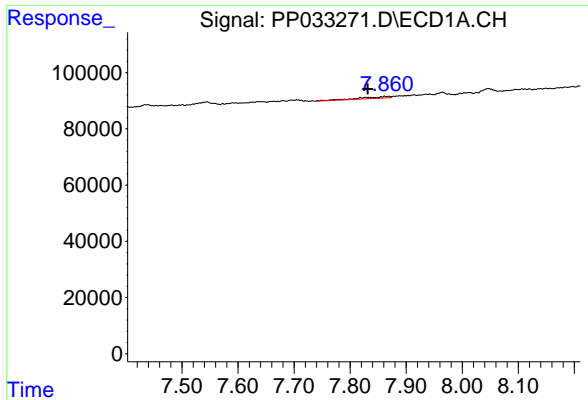
#1 Tetrachloro-m-xylene
 R.T.: 4.000 min
 Delta R.T.: -0.003 min
 Response: 85634
 Conc: 2.09 ng/ml



#2 Decachlorobiphenyl
 R.T.: 10.546 min
 Delta R.T.: -0.005 min
 Response: 123509
 Conc: 2.84 ng/ml

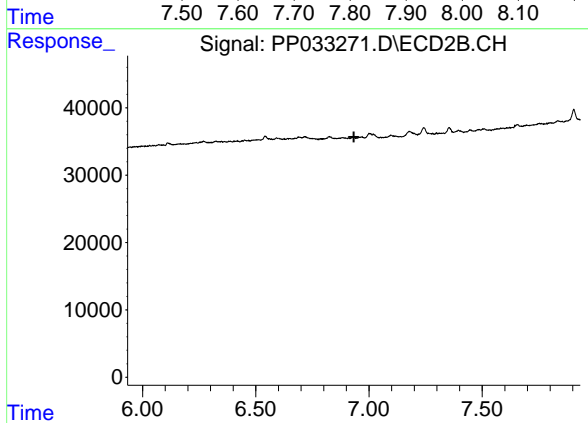


#2 Decachlorobiphenyl
 R.T.: 9.263 min
 Delta R.T.: -0.006 min
 Response: 90767
 Conc: 2.71 ng/ml

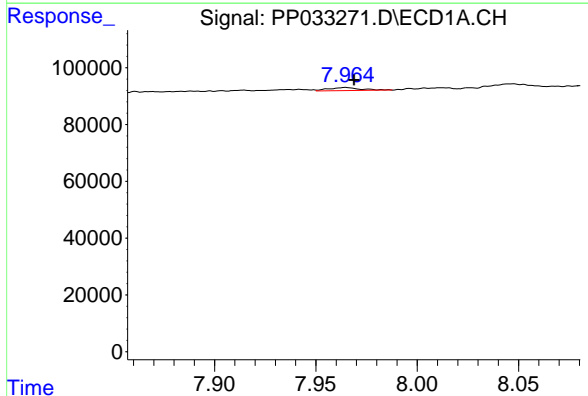


#29 AR-1254-4
 R.T.: 7.861 min
 Delta R.T.: 0.030 min
 Response: 23457
 Conc: 10.14 ng/ml

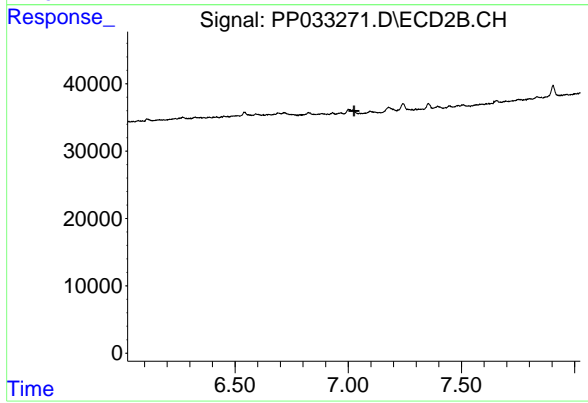
Instrument :
 ECD_P
 ClientSampleId :



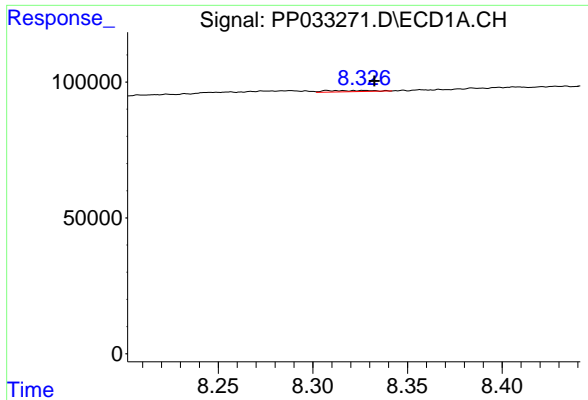
#29 AR-1254-4
 R.T.: 0.000 min
 Exp R.T. : 6.933 min
 Response: 0
 Conc: N.D.



#32 AR-1260-2
 R.T.: 7.965 min
 Delta R.T.: -0.004 min
 Response: 12137
 Conc: 4.15 ng/ml



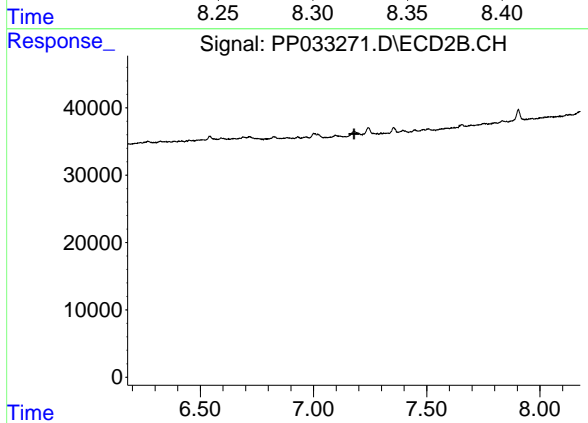
#32 AR-1260-2
 R.T.: 0.000 min
 Exp R.T. : 7.025 min
 Response: 0
 Conc: N.D.



#33 AR-1260-3

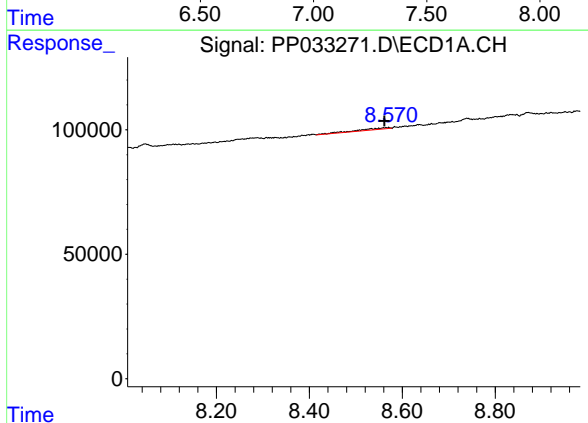
R.T.: 8.308 min
 Delta R.T.: -0.025 min
 Response: 7104
 Conc: 2.78 ng/ml

Instrument :
 ECD_P
 ClientSampleId :



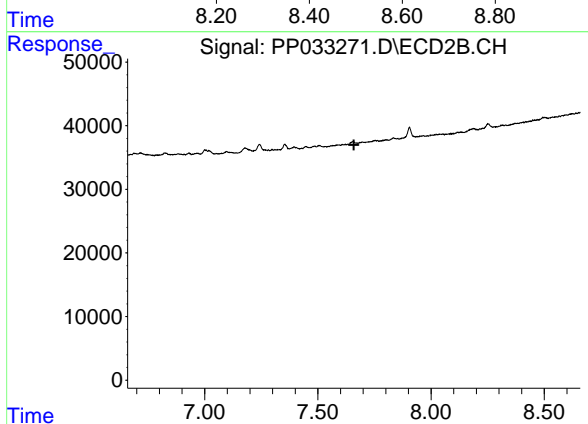
#33 AR-1260-3

R.T.: 0.000 min
 Exp R.T. : 7.179 min
 Response: 0
 Conc: N.D.



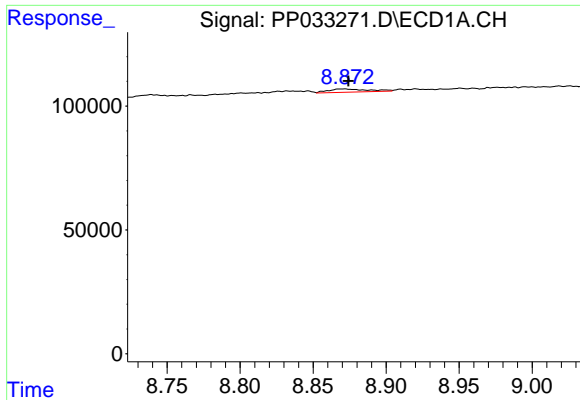
#34 AR-1260-4

R.T.: 8.571 min
 Delta R.T.: 0.009 min
 Response: 30124
 Conc: 12.33 ng/ml



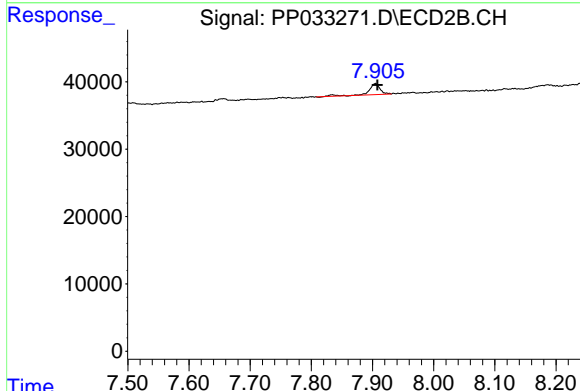
#34 AR-1260-4

R.T.: 0.000 min
 Exp R.T. : 7.659 min
 Response: 0
 Conc: N.D.

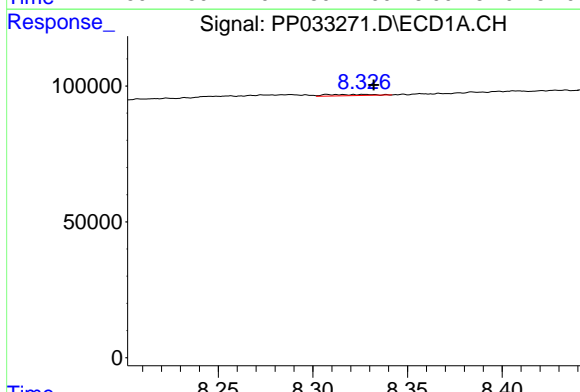


#35 AR-1260-5
 R.T.: 8.871 min
 Delta R.T.: -0.003 min
 Response: 24792
 Conc: 4.61 ng/ml

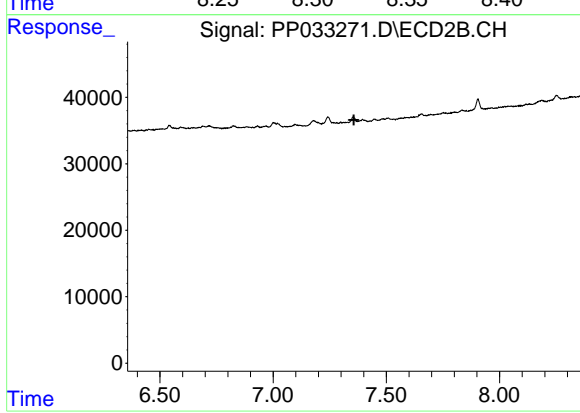
Instrument :
 ECD_P
 ClientSampleId :



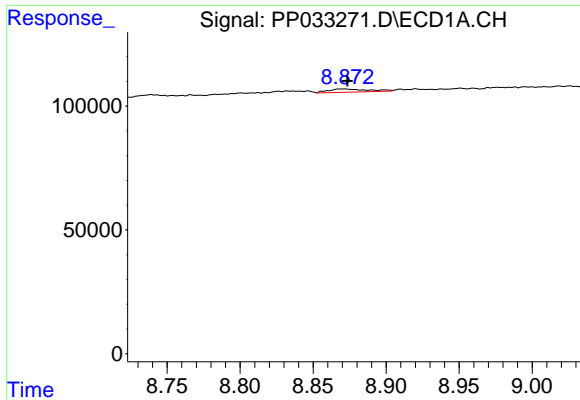
#35 AR-1260-5
 R.T.: 7.905 min
 Delta R.T.: -0.004 min
 Response: 20931
 Conc: 5.44 ng/ml



#36 AR-1262-1
 R.T.: 8.308 min
 Delta R.T.: -0.025 min
 Response: 7104
 Conc: 1.87 ng/ml



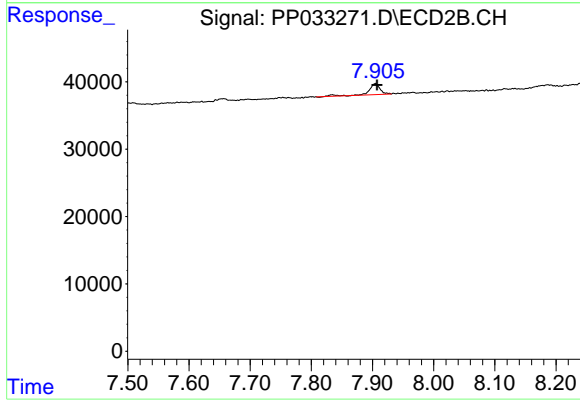
#36 AR-1262-1
 R.T.: 0.000 min
 Exp R.T. : 7.357 min
 Response: 0
 Conc: N.D.



#37 AR-1262-2

R.T.: 8.871 min
Delta R.T.: -0.002 min
Response: 24792
Conc: 3.96 ng/ml

Instrument :
ECD_P
ClientSampleId :



#37 AR-1262-2

R.T.: 7.905 min
Delta R.T.: -0.003 min
Response: 20931
Conc: 4.76 ng/ml