

Data Path : Z:\pestpcbsrv\HPCHEM1\ECD_P\Data\PP021121\
 Data File : PP033273.D
 Signal(s) : Signal #1: ECD1A.CH Signal #2: ECD2B.CH
 Acq On : 11 Feb 2021 15:06
 Operator : DD\AJ
 Sample : M1368-02 10X
 Misc :
 ALS Vial : 17 Sample Multiplier: 1

Instrument :
 ECD_P
 ClientSampleId :

Integration File signal 1: autoint1.e
 Integration File signal 2: autoint2.e
 Quant Time: Feb 12 00:55:18 2021
 Quant Method : Z:\pestpcbsrv\HPCHEM1\ECD_P\methods\PP020821.M
 Quant Title : GC EXTRACTABLES
 QLast Update : Tue Feb 09 04:00:57 2021
 Response via : Initial Calibration
 Integrator: ChemStation 6890 Scale Mode: Small noise peaks clipped

Volume Inj. : 2 µl
 Signal #1 Phase : ZB-MR1 Signal #2 Phase: ZB-MR2
 Signal #1 Info : 30Mx0.32mmx 0.50µ Signal #2 Info : 30M x 0.32mm x 0.25µm

Compound	RT#1	RT#2	Resp#1	Resp#2	ng/ml	ng/ml

System Monitoring Compounds						
1) SA Tetrachlo...	4.728	4.000	155916	92850	2.543	2.271
2) SA Decachlor...	10.546	9.263	109481	100059	2.513	2.987
Target Compounds						
27) L6 AR-1254-2	7.160	0.000	32904	0	11.223	N.D. #
28) L6 AR-1254-3	7.547	0.000	59799	0	19.688	N.D. #
30) L6 AR-1254-5	8.280f	7.355	115171	77708	47.596	32.092 #
31) L7 AR-1260-1	7.712	0.000	13161	0	6.011	N.D. #
32) L7 AR-1260-2	7.962	0.000	83002	0	28.399	N.D. #
33) L7 AR-1260-3	8.343	0.000	14177	0	5.539	N.D. #
34) L7 AR-1260-4	8.556	0.000	25418	0	10.404	N.D. #
35) L7 AR-1260-5	8.877	0.000	23132	0	4.297	N.D. #
36) L8 AR-1262-1	8.343	7.355	14177	77708	3.729	62.394 #
37) L8 AR-1262-2	8.877	0.000	23132	0	3.695	N.D. #
39) L8 AR-1262-4	9.257	0.000	27693	0	8.882	N.D. #
40) L8 AR-1262-5	9.871	0.000	13297	0	6.461	N.D. #
42) L9 AR-1268-2	9.257	0.000	27693	0	4.290	N.D. #
44) L9 AR-1268-4	9.871	0.000	13297	0	6.126	N.D. #

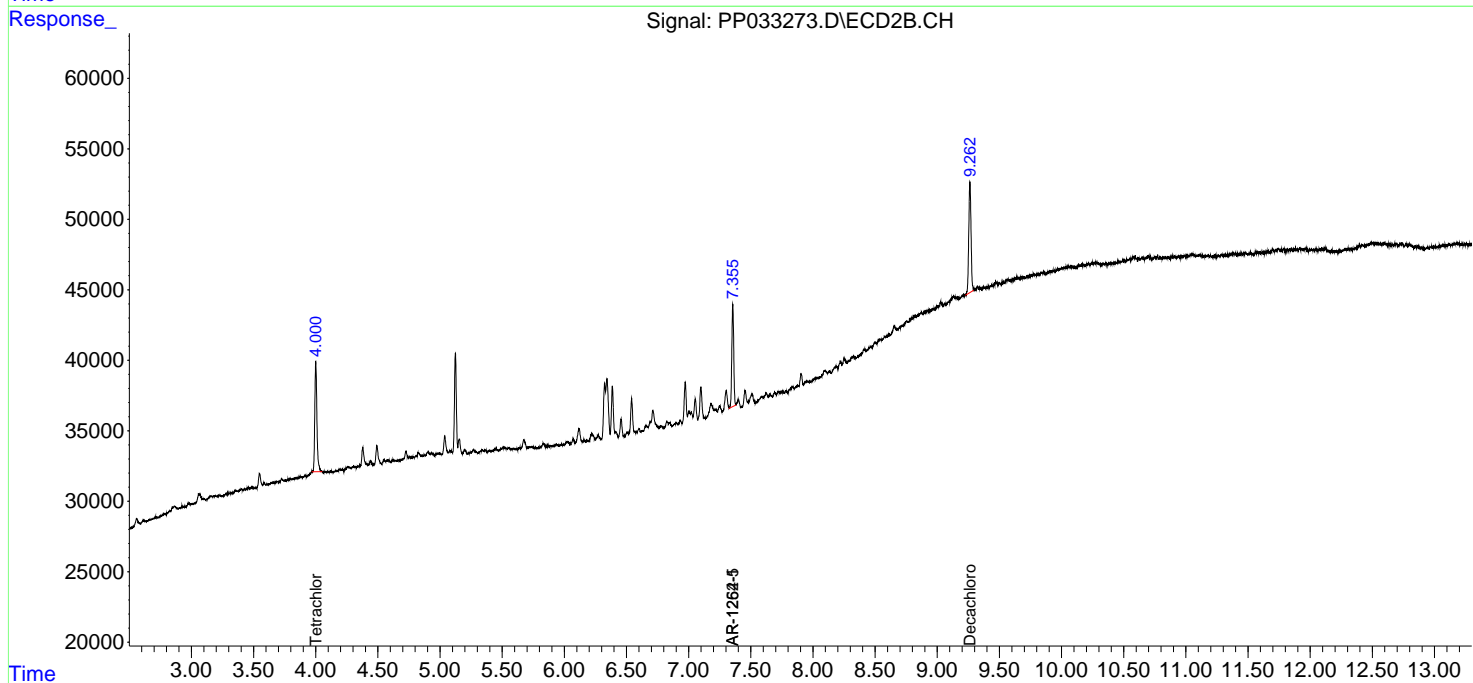
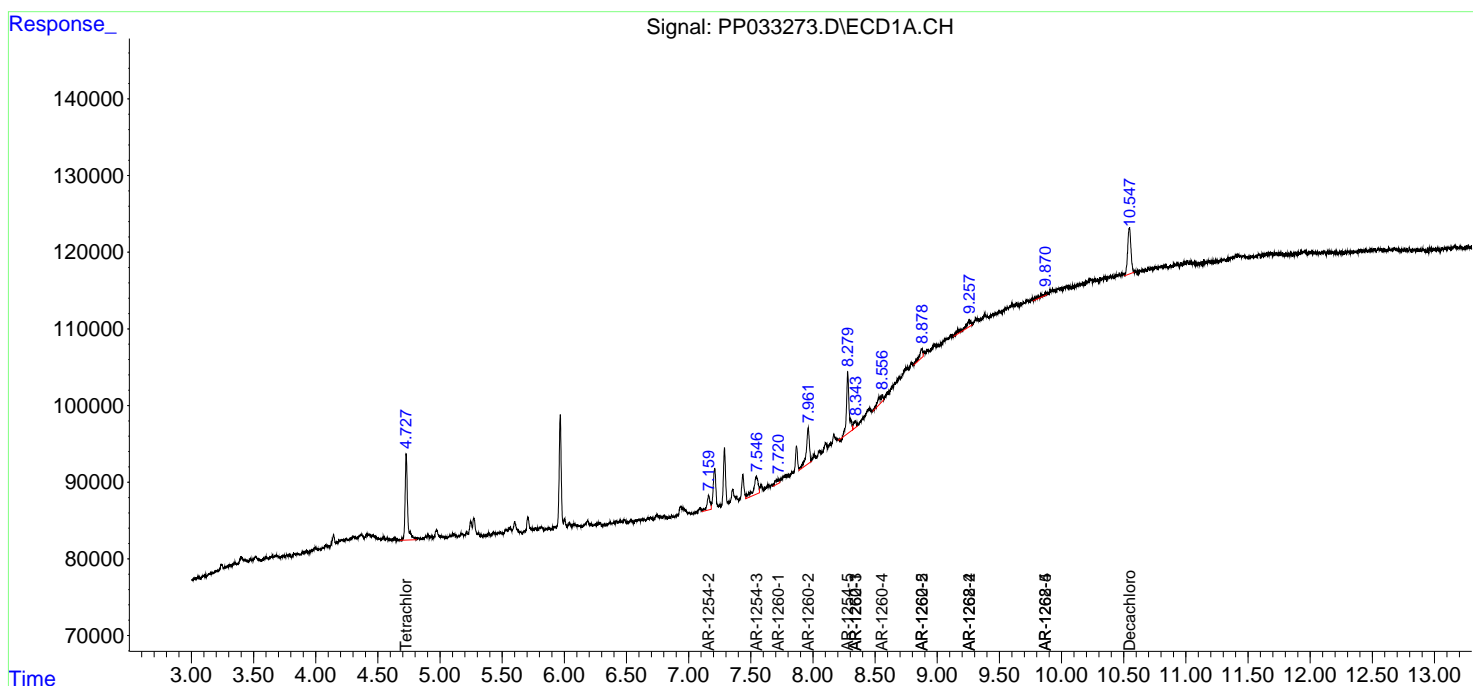
(f)=RT Delta > 1/2 Window (#)=Amounts differ by > 25% (m)=manual int.

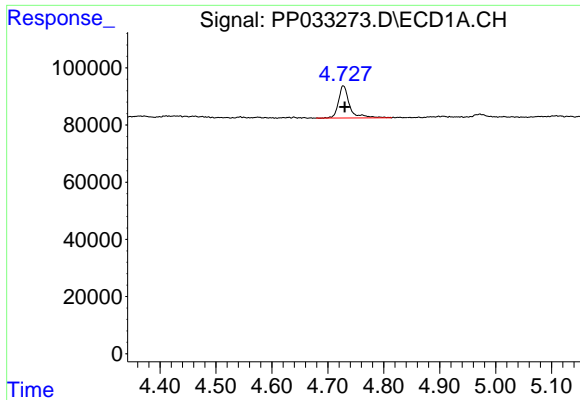
Data Path : Z:\pestpcbsrv\HPCHEM1\ECD_P\Data\PP021121\
 Data File : PP033273.D
 Signal(s) : Signal #1: ECD1A.CH Signal #2: ECD2B.CH
 Acq On : 11 Feb 2021 15:06
 Operator : DD\AJ
 Sample : M1368-02 10X
 Misc :
 ALS Vial : 17 Sample Multiplier: 1

Instrument :
 ECD_P
 ClientSampled :

Integration File signal 1: autoint1.e
 Integration File signal 2: autoint2.e
 Quant Time: Feb 12 00:55:18 2021
 Quant Method : Z:\pestpcbsrv\HPCHEM1\ECD_P\methods\PP020821.M
 Quant Title : GC EXTRACTABLES
 QLast Update : Tue Feb 09 04:00:57 2021
 Response via : Initial Calibration
 Integrator: ChemStation 6890 Scale Mode: Small noise peaks clipped

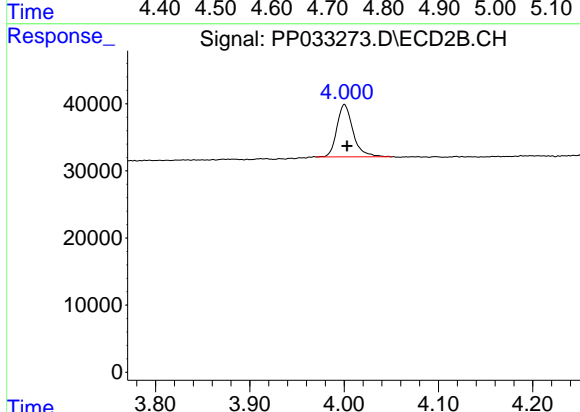
Volume Inj. : 2 µl
 Signal #1 Phase : ZB-MR1 Signal #2 Phase: ZB-MR2
 Signal #1 Info : 30Mx0.32mmx 0.50µ Signal #2 Info : 30M x 0.32mm x 0.25µm



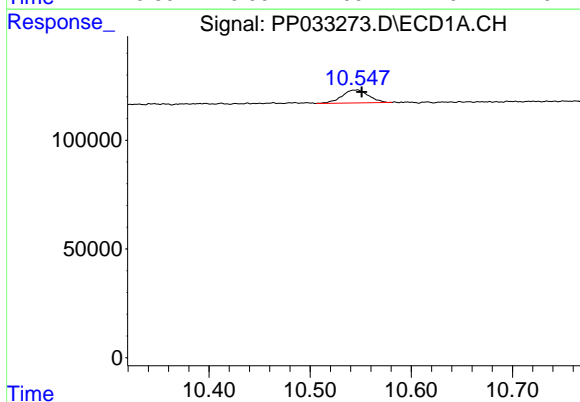


#1 Tetrachloro-m-xylene
 R.T.: 4.728 min
 Delta R.T.: -0.002 min
 Response: 155916
 Conc: 2.54 ng/ml

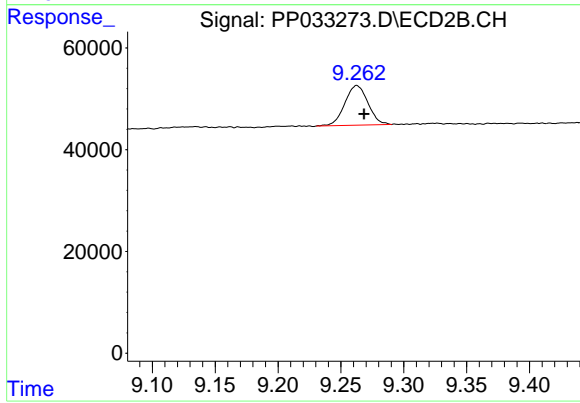
Instrument :
 ECD_P
 ClientSampleId :



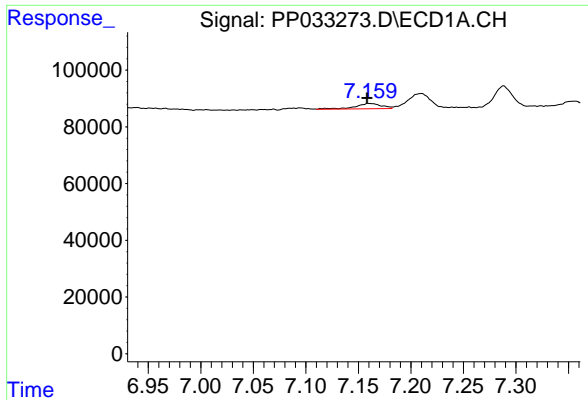
#1 Tetrachloro-m-xylene
 R.T.: 4.000 min
 Delta R.T.: -0.003 min
 Response: 92850
 Conc: 2.27 ng/ml



#2 Decachlorobiphenyl
 R.T.: 10.546 min
 Delta R.T.: -0.005 min
 Response: 109481
 Conc: 2.51 ng/ml



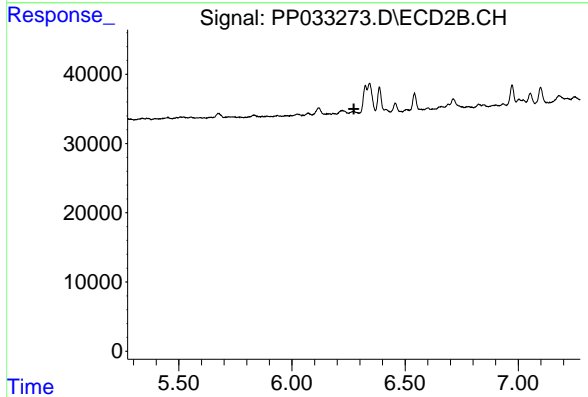
#2 Decachlorobiphenyl
 R.T.: 9.263 min
 Delta R.T.: -0.006 min
 Response: 100059
 Conc: 2.99 ng/ml



#27 AR-1254-2

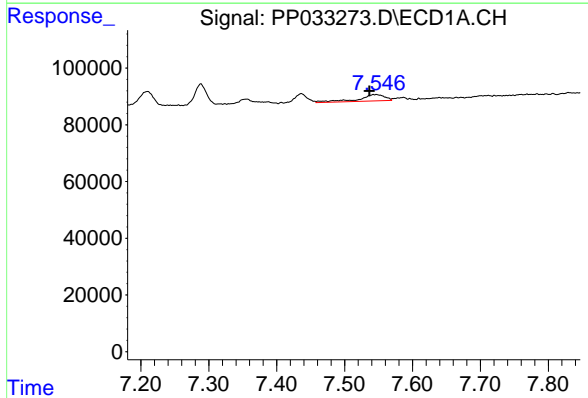
R.T.: 7.160 min
 Delta R.T.: 0.002 min
 Response: 32904
 Conc: 11.22 ng/ml

Instrument :
 ECD_P
 ClientSampled :



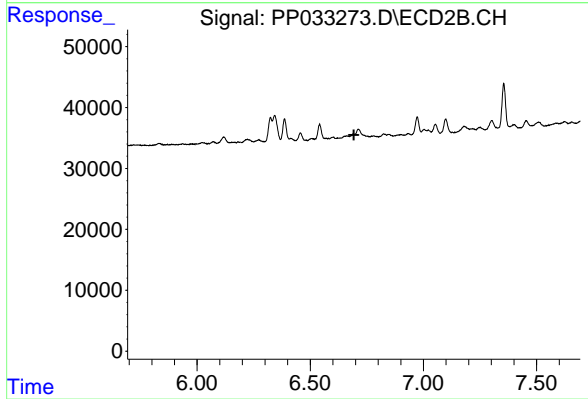
#27 AR-1254-2

R.T.: 0.000 min
 Exp R.T. : 6.274 min
 Response: 0
 Conc: N.D.



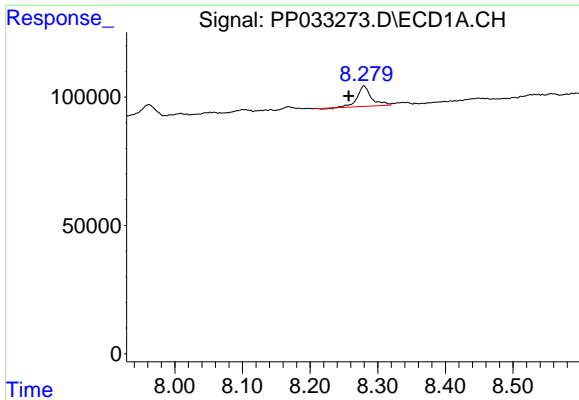
#28 AR-1254-3

R.T.: 7.547 min
 Delta R.T.: 0.010 min
 Response: 59799
 Conc: 19.69 ng/ml



#28 AR-1254-3

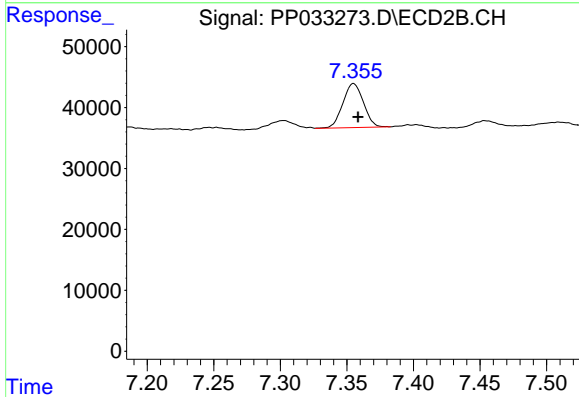
R.T.: 0.000 min
 Exp R.T. : 6.693 min
 Response: 0
 Conc: N.D.



#30 AR-1254-5

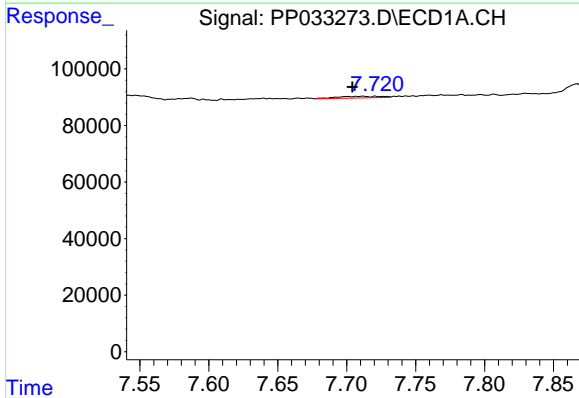
R.T.: 8.280 min
 Delta R.T.: 0.022 min
 Response: 115171
 Conc: 47.60 ng/ml

Instrument :
 ECD_P
 ClientSampleId :



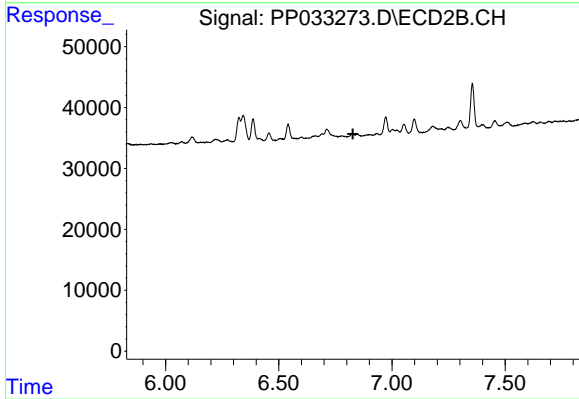
#30 AR-1254-5

R.T.: 7.355 min
 Delta R.T.: -0.003 min
 Response: 77708
 Conc: 32.09 ng/ml



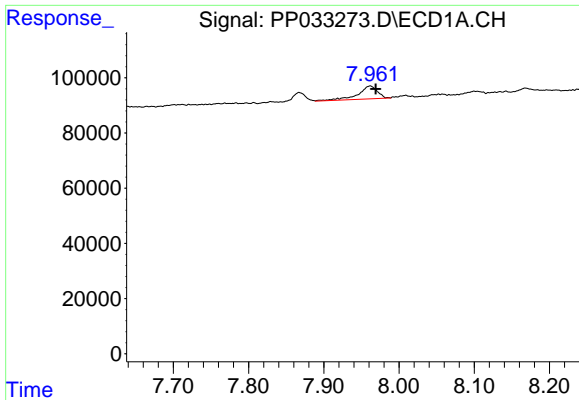
#31 AR-1260-1

R.T.: 7.712 min
 Delta R.T.: 0.008 min
 Response: 13161
 Conc: 6.01 ng/ml



#31 AR-1260-1

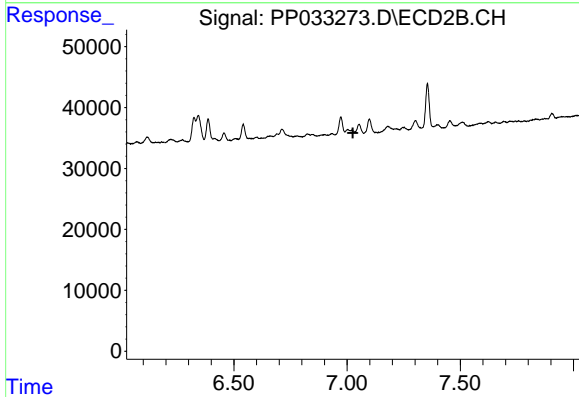
R.T.: 0.000 min
 Exp R.T.: 6.828 min
 Response: 0
 Conc: N.D.



#32 AR-1260-2

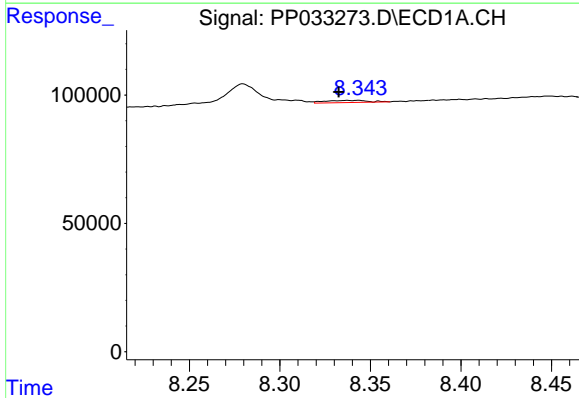
R.T.: 7.962 min
 Delta R.T.: -0.007 min
 Response: 83002
 Conc: 28.40 ng/ml

Instrument :
 ECD_P
 ClientSampleId :



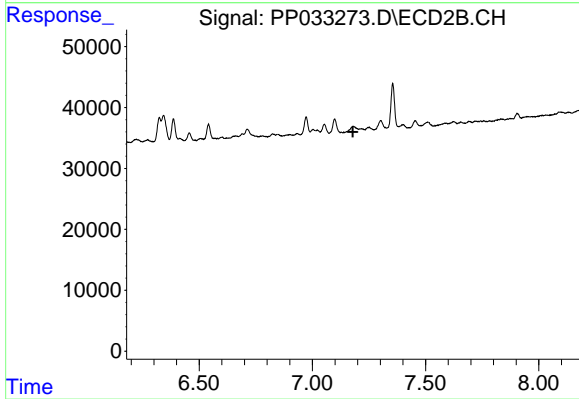
#32 AR-1260-2

R.T.: 0.000 min
 Exp R.T. : 7.025 min
 Response: 0
 Conc: N.D.



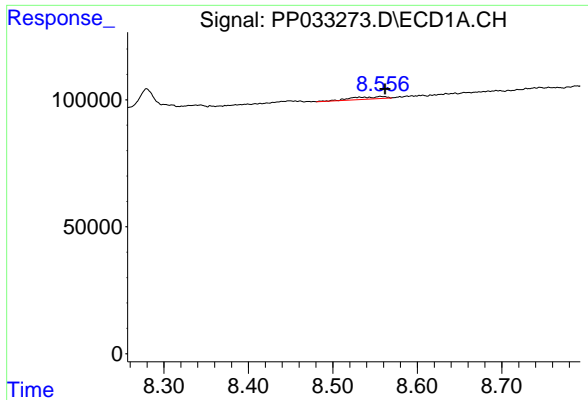
#33 AR-1260-3

R.T.: 8.343 min
 Delta R.T.: 0.011 min
 Response: 14177
 Conc: 5.54 ng/ml



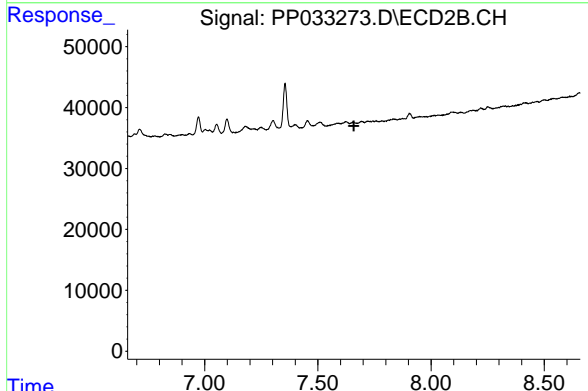
#33 AR-1260-3

R.T.: 0.000 min
 Exp R.T. : 7.179 min
 Response: 0
 Conc: N.D.

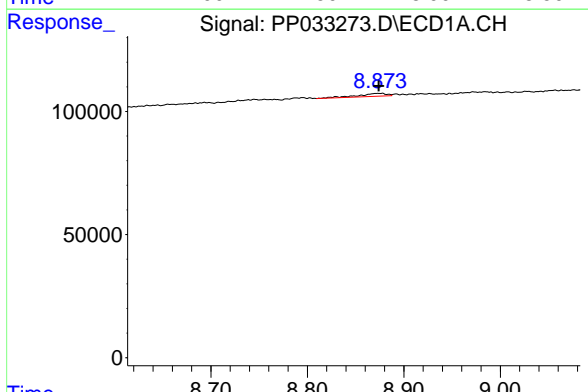


#34 AR-1260-4
 R.T.: 8.556 min
 Delta R.T.: -0.006 min
 Response: 25418
 Conc: 10.40 ng/ml

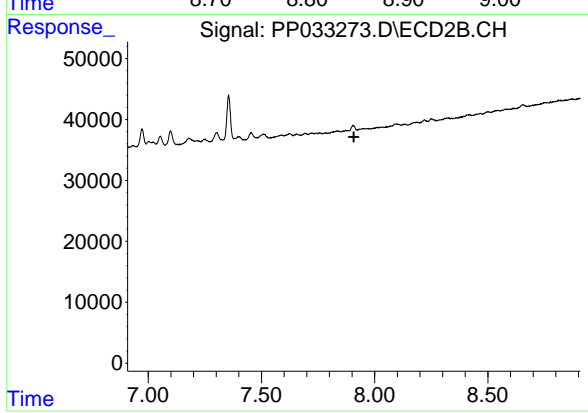
Instrument :
 ECD_P
 ClientSampled :



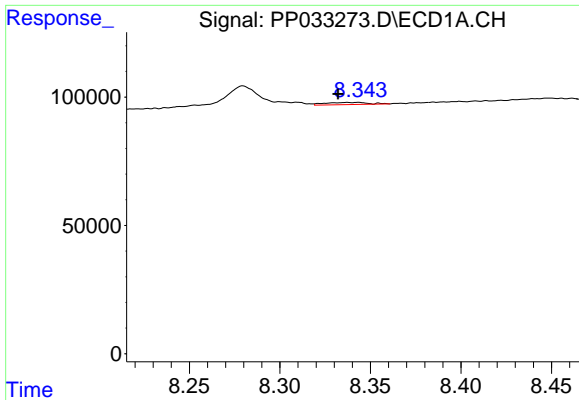
#34 AR-1260-4
 R.T.: 0.000 min
 Exp R.T. : 7.659 min
 Response: 0
 Conc: N.D.



#35 AR-1260-5
 R.T.: 8.877 min
 Delta R.T.: 0.003 min
 Response: 23132
 Conc: 4.30 ng/ml



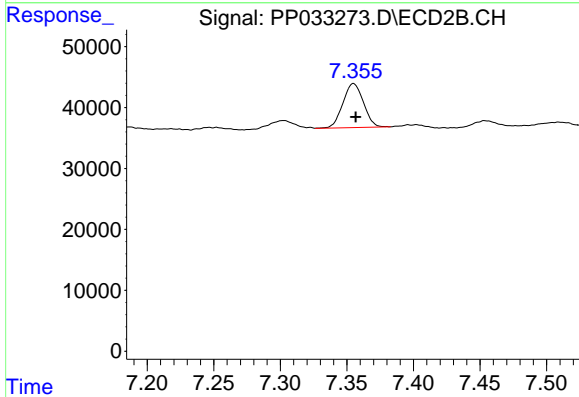
#35 AR-1260-5
 R.T.: 0.000 min
 Exp R.T. : 7.908 min
 Response: 0
 Conc: N.D.



#36 AR-1262-1

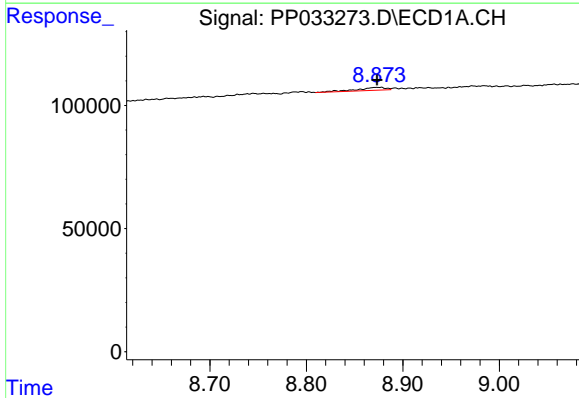
R.T.: 8.343 min
 Delta R.T.: 0.011 min
 Response: 14177
 Conc: 3.73 ng/ml

Instrument :
 ECD_P
 ClientSampleId :



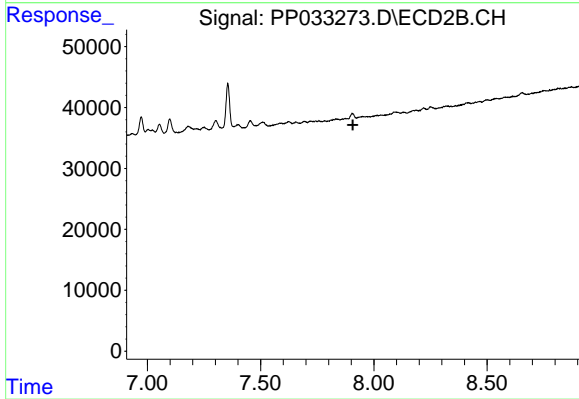
#36 AR-1262-1

R.T.: 7.355 min
 Delta R.T.: -0.002 min
 Response: 77708
 Conc: 62.39 ng/ml



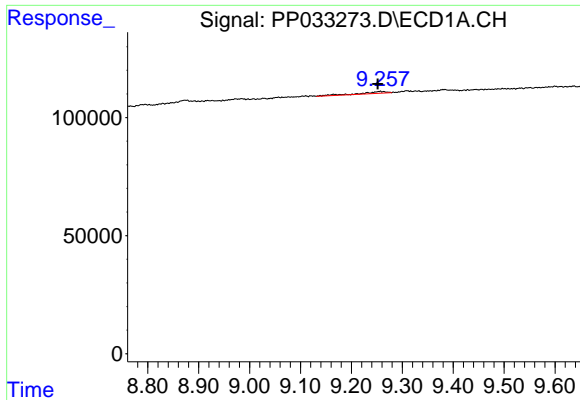
#37 AR-1262-2

R.T.: 8.877 min
 Delta R.T.: 0.003 min
 Response: 23132
 Conc: 3.69 ng/ml



#37 AR-1262-2

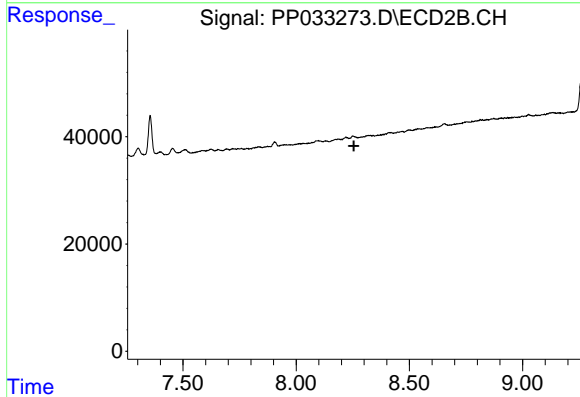
R.T.: 0.000 min
 Exp R.T. : 7.907 min
 Response: 0
 Conc: N.D.



#39 AR-1262-4

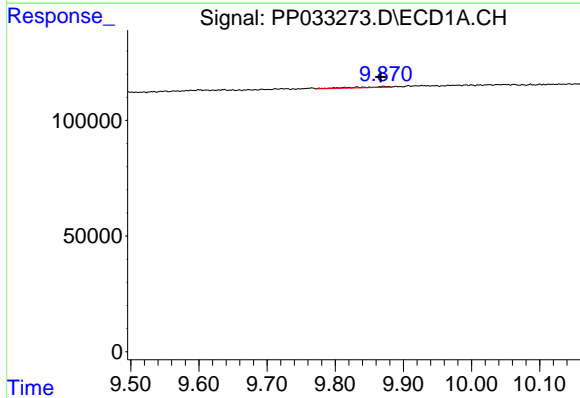
R.T.: 9.257 min
 Delta R.T.: 0.005 min
 Response: 27693
 Conc: 8.88 ng/ml

Instrument :
 ECD_P
 ClientSampled :



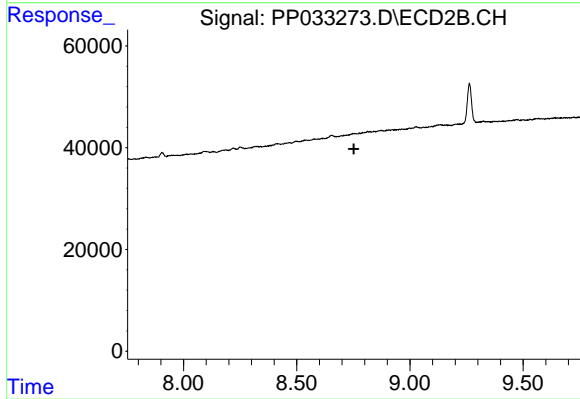
#39 AR-1262-4

R.T.: 0.000 min
 Exp R.T. : 8.255 min
 Response: 0
 Conc: N.D.



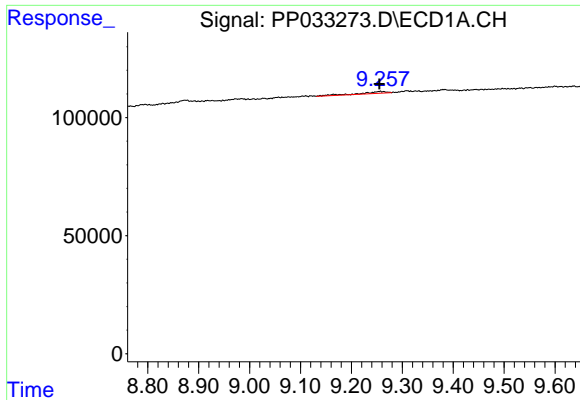
#40 AR-1262-5

R.T.: 9.871 min
 Delta R.T.: 0.004 min
 Response: 13297
 Conc: 6.46 ng/ml



#40 AR-1262-5

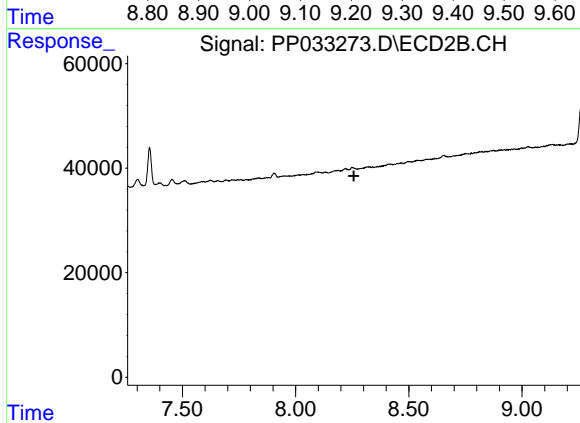
R.T.: 0.000 min
 Exp R.T. : 8.752 min
 Response: 0
 Conc: N.D.



#42 AR-1268-2

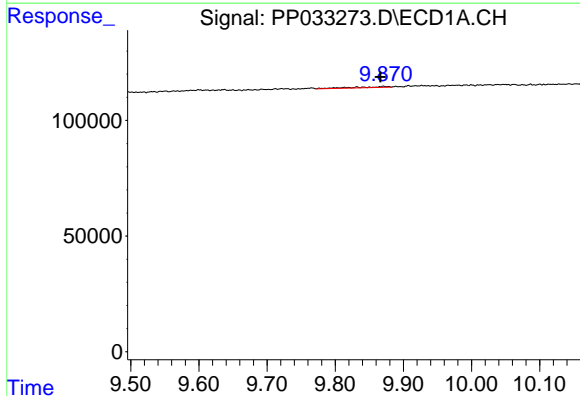
R.T.: 9.257 min
 Delta R.T.: 0.002 min
 Response: 27693
 Conc: 4.29 ng/ml

Instrument :
 ECD_P
 ClientSampled :



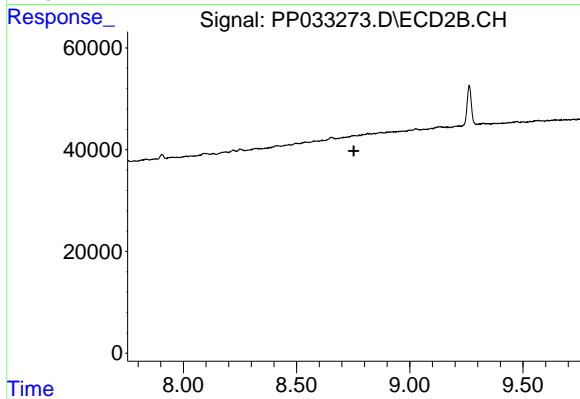
#42 AR-1268-2

R.T.: 0.000 min
 Exp R.T. : 8.257 min
 Response: 0
 Conc: N.D.



#44 AR-1268-4

R.T.: 9.871 min
 Delta R.T.: 0.005 min
 Response: 13297
 Conc: 6.13 ng/ml



#44 AR-1268-4

R.T.: 0.000 min
 Exp R.T. : 8.753 min
 Response: 0
 Conc: N.D.