

Data Path : Z:\pestpcbsrv\HPCHEM1\ECD_P\Data\PP021121\
 Data File : PP033288.D
 Signal(s) : Signal #1: ECD1A.CH Signal #2: ECD2B.CH
 Acq On : 11 Feb 2021 19:54
 Operator : DD\AJ
 Sample : AR1660CCC500
 Misc :
 ALS Vial : 3 Sample Multiplier: 1

Instrument :
 ECD_P
 ClientSampleId :
 AR1660CCC500

Integration File signal 1: autoint1.e
 Integration File signal 2: autoint2.e
 Quant Time: Feb 12 01:03:25 2021
 Quant Method : Z:\pestpcbsrv\HPCHEM1\ECD_P\methods\PP020821.M
 Quant Title : GC EXTRACTABLES
 QLast Update : Tue Feb 09 04:00:57 2021
 Response via : Initial Calibration
 Integrator: ChemStation 6890 Scale Mode: Small noise peaks clipped

Volume Inj. : 2 µl
 Signal #1 Phase : ZB-MR2 Signal #2 Phase: ZB-MR2
 Signal #1 Info : 30Mx0.32mmx 0.50µ Signal #2 Info : 30M x 0.32mm x 0.25µm

Compound	RT#1	RT#2	Resp#1	Resp#2	ng/ml	ng/ml

System Monitoring Compounds						
1) SA Tetrachlo...	4.728	4.002	3005516	2090173	49.012	51.115
2) SA Decachlor...	10.547	9.264	2192771	1786675	50.338	53.333
Target Compounds						
3) L1 AR-1016-1	6.027	5.246	828664	593339	505.574	540.613
4) L1 AR-1016-2	6.049	5.266	1241015	871108	495.576	533.785
5) L1 AR-1016-3	6.115	5.456	793591	483819	500.416	542.771
6) L1 AR-1016-4	6.220	5.507	651784	374458	491.776	519.975
7) L1 AR-1016-5	6.532	5.735	599492	461780	457.092	490.702
31) L7 AR-1260-1	7.702	6.824	1057499	858110	483.022	500.290
32) L7 AR-1260-2	7.966	7.022	1460442	1029987	499.699	509.740
33) L7 AR-1260-3	8.331	7.176	1261479	995961	492.884	502.044
34) L7 AR-1260-4	8.559	7.656	1172353	846619	479.871	503.251
35) L7 AR-1260-5	8.871	7.905	2661644	1987564	494.456	516.556

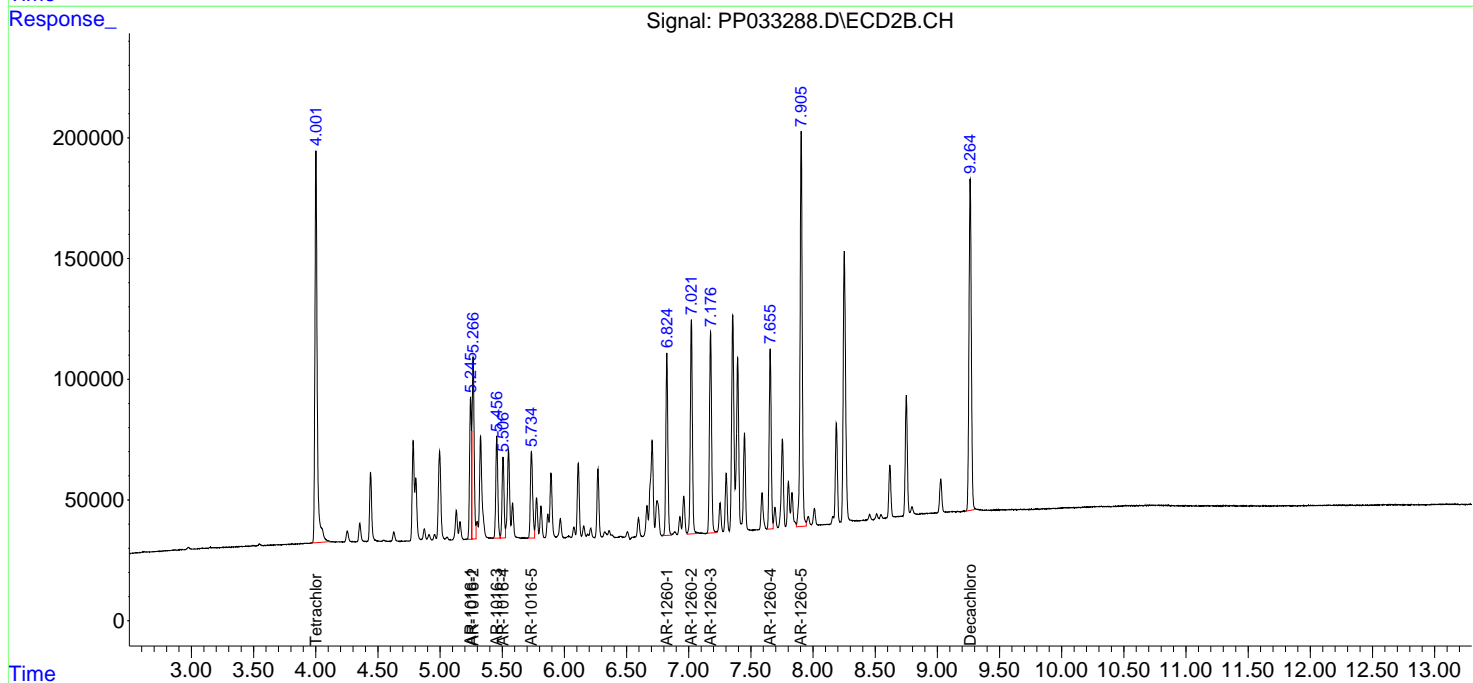
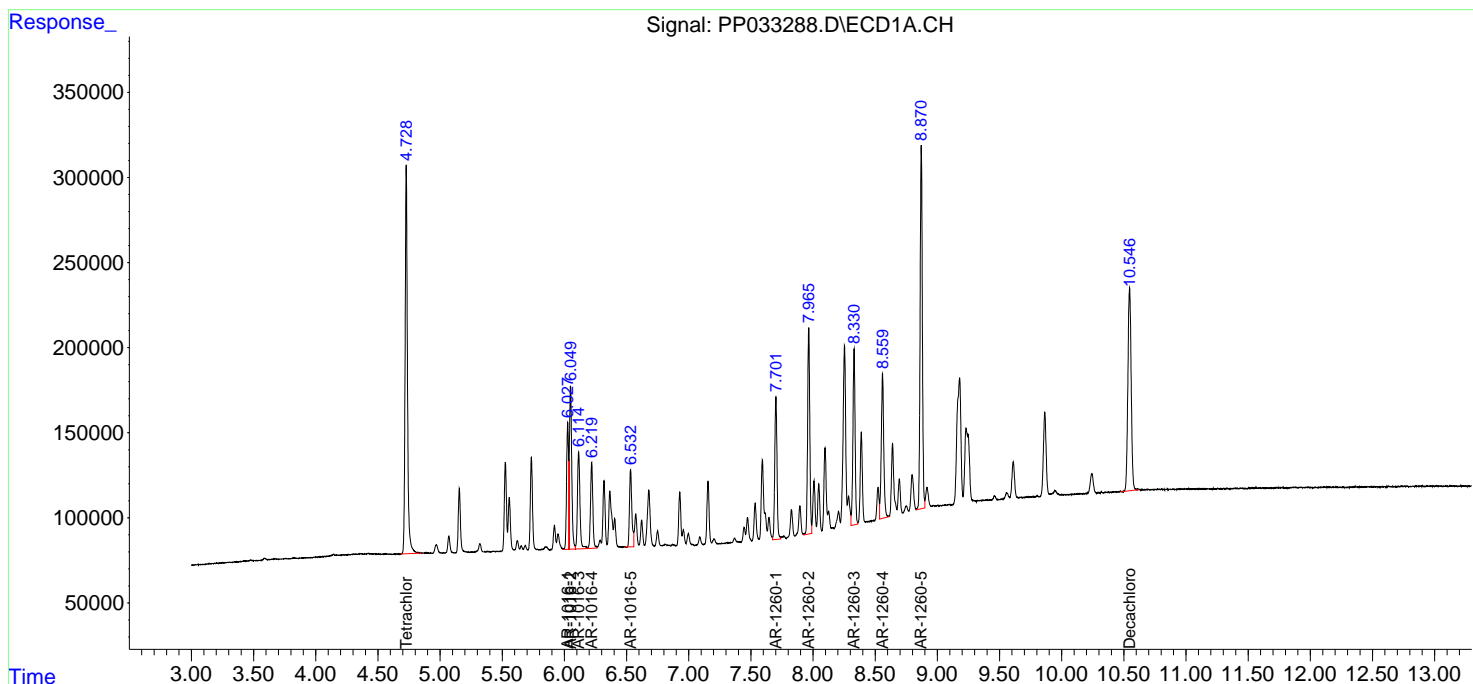
(f)=RT Delta > 1/2 Window (#)=Amounts differ by > 25% (m)=manual int.

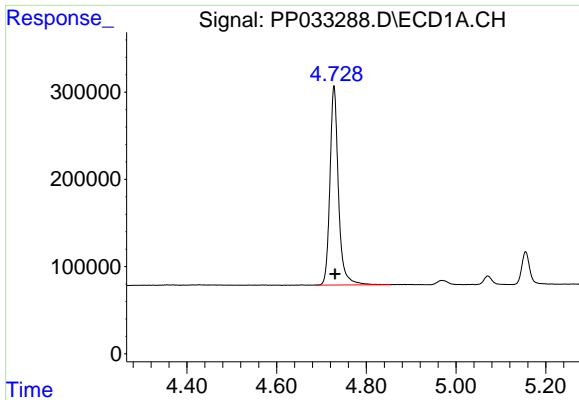
Data Path : Z:\pestpcbsrv\HPCHEM1\ECD_P\Data\PP021121\
 Data File : PP033288.D
 Signal(s) : Signal #1: ECD1A.CH Signal #2: ECD2B.CH
 Acq On : 11 Feb 2021 19:54
 Operator : DD\AJ
 Sample : AR1660CCC500
 Misc :
 ALS Vial : 3 Sample Multiplier: 1

Instrument :
 ECD_P
 ClientSampled :
 AR1660CCC500

Integration File signal 1: autoint1.e
 Integration File signal 2: autoint2.e
 Quant Time: Feb 12 01:03:25 2021
 Quant Method : Z:\pestpcbsrv\HPCHEM1\ECD_P\methods\PP020821.M
 Quant Title : GC EXTRACTABLES
 QLast Update : Tue Feb 09 04:00:57 2021
 Response via : Initial Calibration
 Integrator: ChemStation 6890 Scale Mode: Small noise peaks clipped

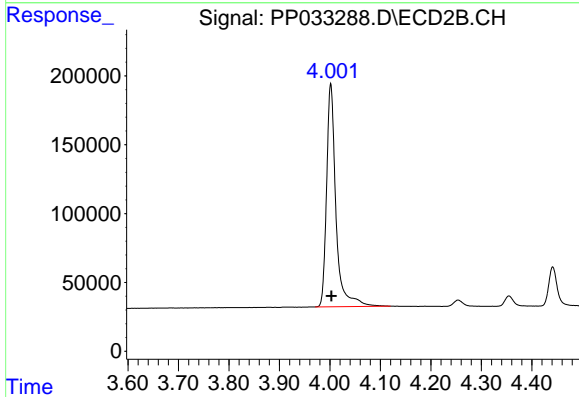
Volume Inj. : 2 µl
 Signal #1 Phase : ZB-MR1 Signal #2 Phase: ZB-MR2
 Signal #1 Info : 30Mx0.32mmx 0.50µ Signal #2 Info : 30M x 0.32mm x 0.25µm



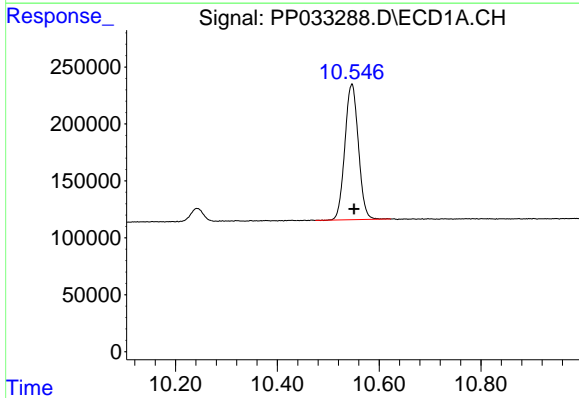


#1 Tetrachloro-m-xylene
 R.T.: 4.728 min
 Delta R.T.: -0.002 min
 Response: 3005516
 Conc: 49.01 ng/ml

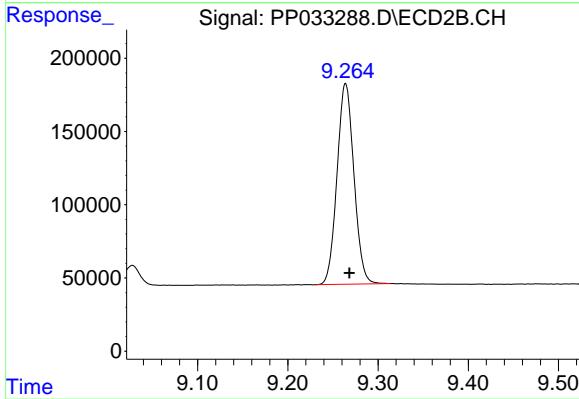
Instrument :
 ECD_P
 ClientSampleId :
 AR1660CCC500



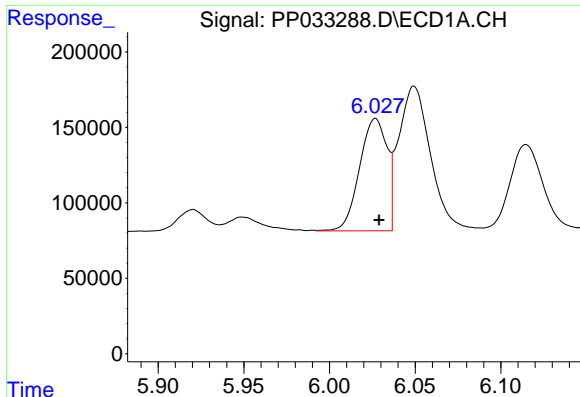
#1 Tetrachloro-m-xylene
 R.T.: 4.002 min
 Delta R.T.: -0.001 min
 Response: 2090173
 Conc: 51.11 ng/ml



#2 Decachlorobiphenyl
 R.T.: 10.547 min
 Delta R.T.: -0.004 min
 Response: 2192771
 Conc: 50.34 ng/ml



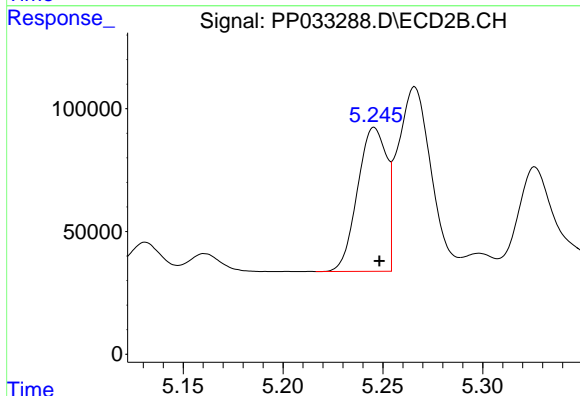
#2 Decachlorobiphenyl
 R.T.: 9.264 min
 Delta R.T.: -0.004 min
 Response: 1786675
 Conc: 53.33 ng/ml



#3 AR-1016-1

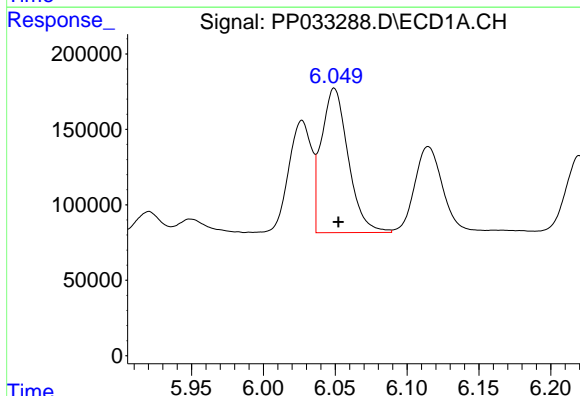
R.T.: 6.027 min
 Delta R.T.: -0.002 min
 Response: 828664
 Conc: 505.57 ng/ml

Instrument :
 ECD_P
 ClientSampleId :
 AR1660CCC500



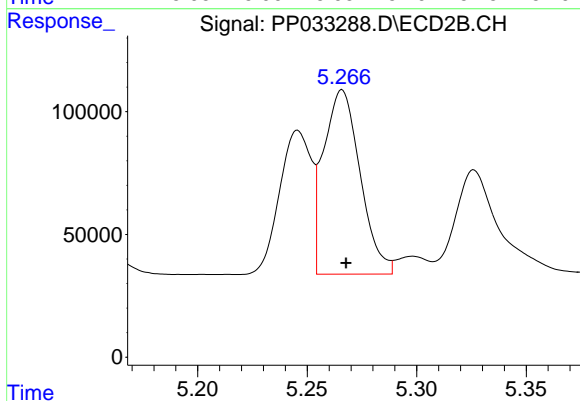
#3 AR-1016-1

R.T.: 5.246 min
 Delta R.T.: -0.003 min
 Response: 593339
 Conc: 540.61 ng/ml



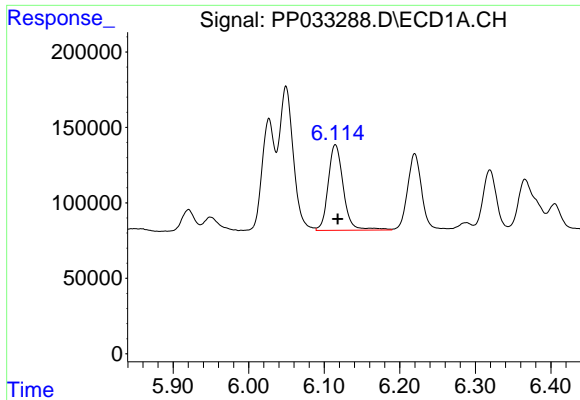
#4 AR-1016-2

R.T.: 6.049 min
 Delta R.T.: -0.003 min
 Response: 1241015
 Conc: 495.58 ng/ml



#4 AR-1016-2

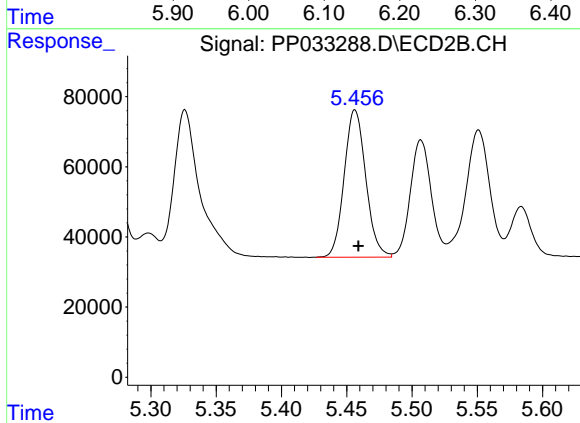
R.T.: 5.266 min
 Delta R.T.: -0.002 min
 Response: 871108
 Conc: 533.78 ng/ml



#5 AR-1016-3

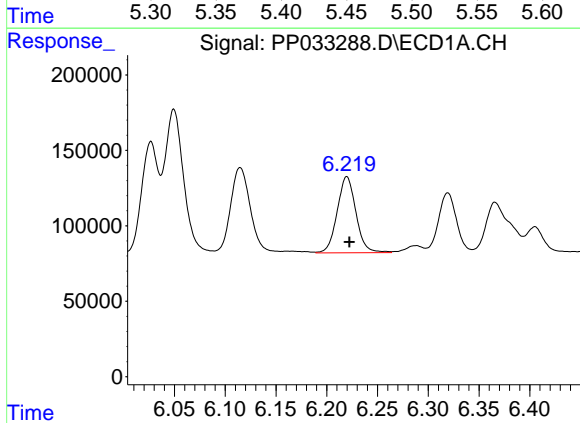
R.T.: 6.115 min
 Delta R.T.: -0.003 min
 Response: 793591
 Conc: 500.42 ng/ml

Instrument :
 ECD_P
 ClientSampleId :
 AR1660CCC500



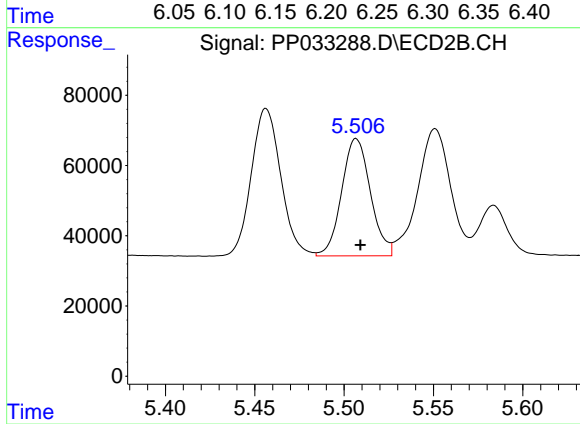
#5 AR-1016-3

R.T.: 5.456 min
 Delta R.T.: -0.003 min
 Response: 483819
 Conc: 542.77 ng/ml



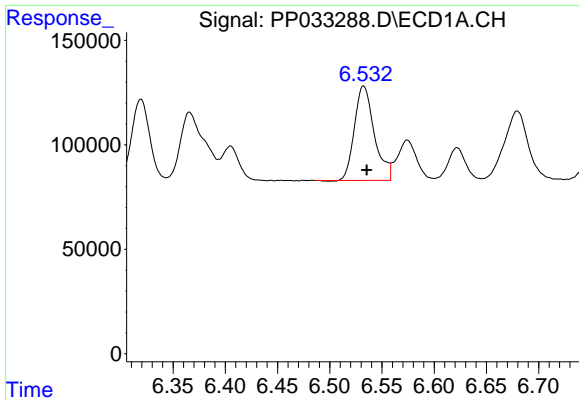
#6 AR-1016-4

R.T.: 6.220 min
 Delta R.T.: -0.003 min
 Response: 651784
 Conc: 491.78 ng/ml



#6 AR-1016-4

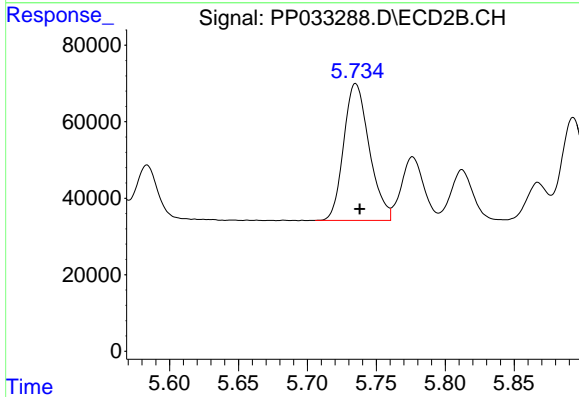
R.T.: 5.507 min
 Delta R.T.: -0.002 min
 Response: 374458
 Conc: 519.98 ng/ml



#7 AR-1016-5

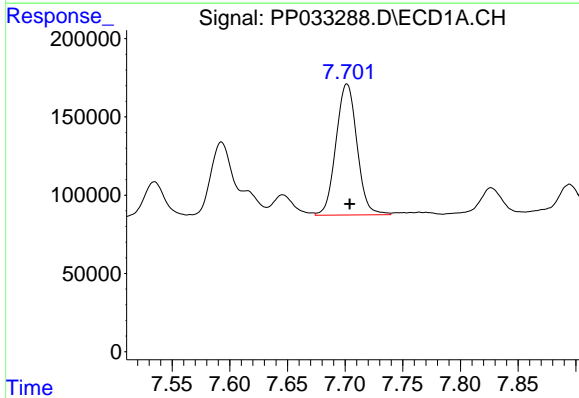
R.T.: 6.532 min
 Delta R.T.: -0.003 min
 Response: 599492
 Conc: 457.09 ng/ml

Instrument :
 ECD_P
ClientSampleId :
 AR1660CCC500



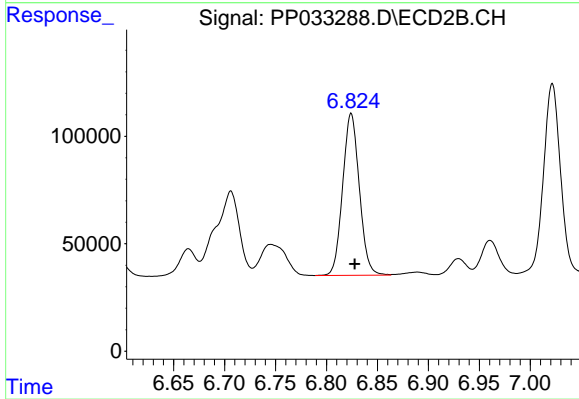
#7 AR-1016-5

R.T.: 5.735 min
 Delta R.T.: -0.003 min
 Response: 461780
 Conc: 490.70 ng/ml



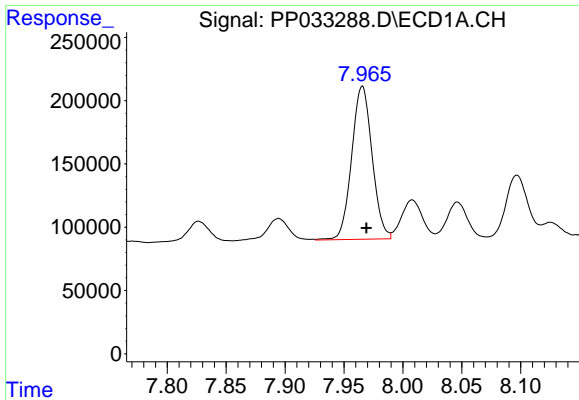
#31 AR-1260-1

R.T.: 7.702 min
 Delta R.T.: -0.002 min
 Response: 1057499
 Conc: 483.02 ng/ml



#31 AR-1260-1

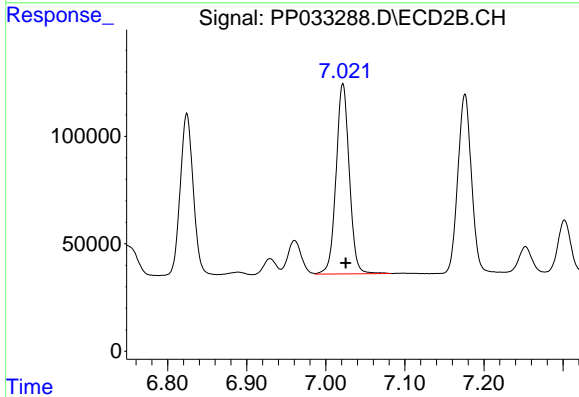
R.T.: 6.824 min
 Delta R.T.: -0.003 min
 Response: 858110
 Conc: 500.29 ng/ml



#32 AR-1260-2

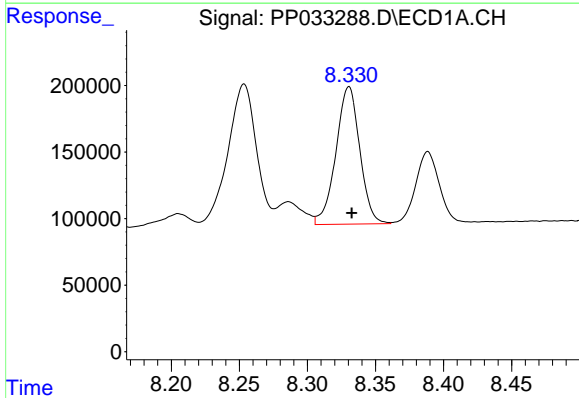
R.T.: 7.966 min
 Delta R.T.: -0.003 min
 Response: 1460442
 Conc: 499.70 ng/ml

Instrument :
 ECD_P
 ClientSampleId :
 AR1660CCC500



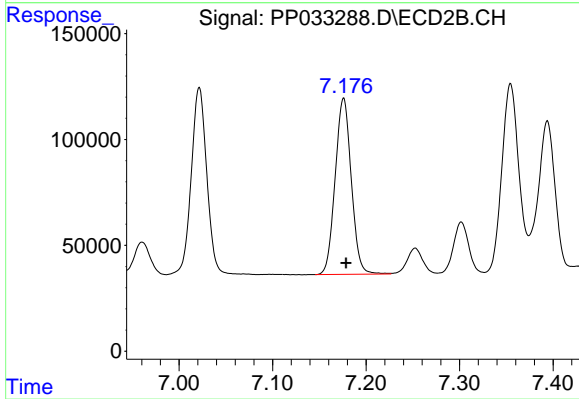
#32 AR-1260-2

R.T.: 7.022 min
 Delta R.T.: -0.004 min
 Response: 1029987
 Conc: 509.74 ng/ml



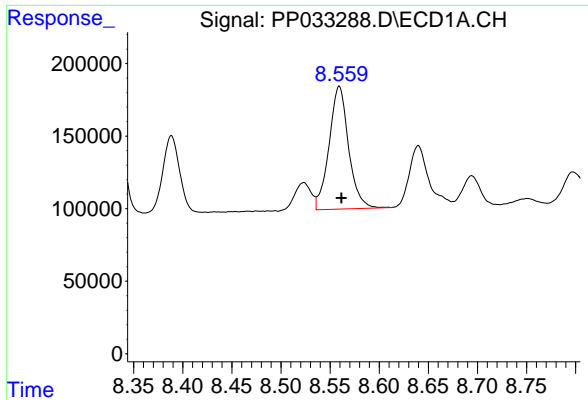
#33 AR-1260-3

R.T.: 8.331 min
 Delta R.T.: -0.002 min
 Response: 1261479
 Conc: 492.88 ng/ml



#33 AR-1260-3

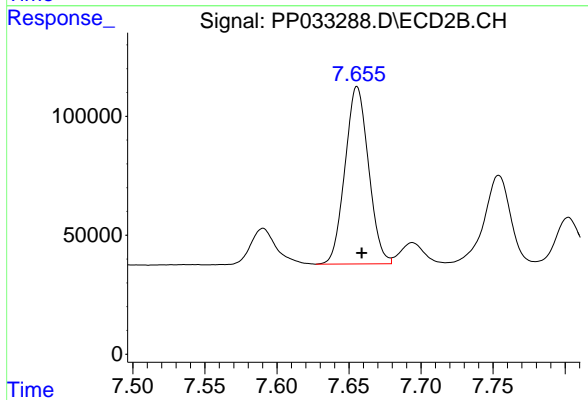
R.T.: 7.176 min
 Delta R.T.: -0.003 min
 Response: 995961
 Conc: 502.04 ng/ml



#34 AR-1260-4

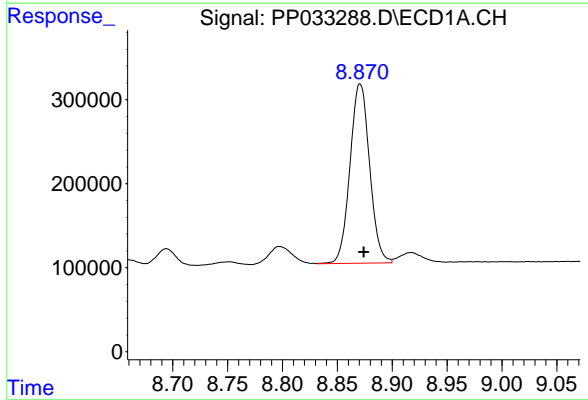
R.T.: 8.559 min
 Delta R.T.: -0.002 min
 Response: 1172353
 Conc: 479.87 ng/ml

Instrument :
 ECD_P
 ClientSampleId :
 AR1660CCC500



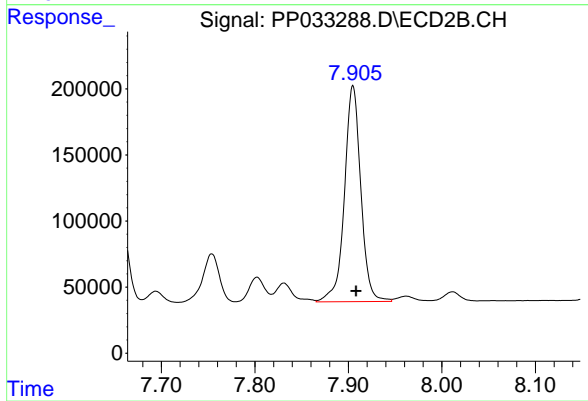
#34 AR-1260-4

R.T.: 7.656 min
 Delta R.T.: -0.003 min
 Response: 846619
 Conc: 503.25 ng/ml



#35 AR-1260-5

R.T.: 8.871 min
 Delta R.T.: -0.003 min
 Response: 2661644
 Conc: 494.46 ng/ml



#35 AR-1260-5

R.T.: 7.905 min
 Delta R.T.: -0.003 min
 Response: 1987564
 Conc: 516.56 ng/ml