

Data Path : Z:\pestpcbsrv\HPCHEM1\ECD_P\Data\PP021122\
 Data File : PP043595.D
 Signal(s) : Signal #1: ECD1A.ch Signal #2: ECD2B.ch
 Acq On : 11 Feb 2022 10:40
 Operator : YP\AJ
 Sample : I.BLK
 Misc :
 ALS Vial : 2 Sample Multiplier: 1

Instrument :
 ECD_P
 ClientSampleId :
 I.BLK

Integration File signal 1: autoint1.e
 Integration File signal 2: autoint2.e
 Quant Time: Feb 12 04:39:10 2022
 Quant Method : Z:\pestpcbsrv\HPCHEM1\ECD_P\methods\PP021022.M
 Quant Title : GC EXTRACTABLES
 QLast Update : Fri Feb 11 04:48:05 2022
 Response via : Initial Calibration
 Integrator: ChemStation

Volume Inj. : 2 µl
 Signal #1 Phase : ZB-MR1 Signal #2 Phase: ZB-MR2
 Signal #1 Info : 30Mx0.32mmx 0.50µ Signal #2 Info : 30M x 0.32mm x 0.25µm

Compound	RT#1	RT#2	Resp#1	Resp#2	ng/ml	ng/ml
System Monitoring Compounds						
1) SA Tetrachlo...	3.919	3.174	42320166	37455602	19.140	19.942
2) SA Decachlor...	10.073	8.555	24535388	34912183	20.655	21.519
Target Compounds						
3) L1 AR-1016-1	0.000	4.325	0	117229	N.D.	1.913 #
4) L1 AR-1016-2	5.228f	4.346	244966	686525	2.323	8.126 #
5) L1 AR-1016-3	5.265	4.528	947471	300184	14.389	6.426 #
6) L1 AR-1016-4	5.388f	4.577	761773	420847	14.047	11.261
8) L2 AR-1221-1	4.148	3.400	175387	26639	6.889	1.117 #
9) L2 AR-1221-2	4.241	3.488	690682	657873	35.976	36.427
10) L2 AR-1221-3	4.304	3.575	281817	34884	4.906	0.676 #
11) L3 AR-1232-1	4.304	3.575	281817	34884	5.807	0.811 #
12) L3 AR-1232-2	4.868f	4.346	195409	686525	8.246	19.232 #
13) L3 AR-1232-3	0.000	4.528	0	300184	N.D.	15.351 #
14) L3 AR-1232-4	5.388f	4.617	761773	481477	34.898	27.843
15) L3 AR-1232-5	5.480	0.000	632243	0	39.199	N.D. #
16) L4 AR-1242-1	0.000	4.325	0	117229	N.D.	2.405 #
17) L4 AR-1242-2	5.228f	4.346	244966	686525	2.961	10.196 #
18) L4 AR-1242-3	5.265	4.528	947471	300184	18.305	7.997 #
19) L4 AR-1242-4	5.388f	4.617	761773	481477	17.835	13.334 #
20) L4 AR-1242-5	6.184	5.170	3741288	516114	86.640	11.989 #
21) L5 AR-1248-1	0.000	4.325	0	117229	N.D.	3.147 #
22) L5 AR-1248-2	5.480	4.577	632243	420847	11.129	8.603
23) L5 AR-1248-3	0.000	4.617	0	481477	N.D.	9.383 #
25) L5 AR-1248-5	6.184	5.203f	3741288	9356667	54.119	163.300 #
26) L6 AR-1254-1	6.099	5.170	3011174	516114	39.853	5.910 #
27) L6 AR-1254-2	6.353	5.342	3204972	804832	28.573	10.551 #
28) L6 AR-1254-3	6.741	5.770	12230890	496713	105.701	4.053 #
29) L6 AR-1254-4	0.000	6.020	0	556467	N.D.	7.051 #
30) L6 AR-1254-5	0.000	6.473	0	273594	N.D.	2.366 #
31) L7 AR-1260-1	6.932	5.916	6642938	738145	79.326	9.230 #
32) L7 AR-1260-2	7.191	6.137f	35488	331642	0.392	3.396 #
33) L7 AR-1260-3	0.000	6.280	0	863101	N.D.	9.454 #
34) L7 AR-1260-4	0.000	6.794	0	197328	N.D.	2.439 #
35) L7 AR-1260-5	8.175f	7.063	136246	160578	0.879	0.869
36) L8 AR-1262-1	0.000	6.510	0	297972	N.D.	2.710 #
37) L8 AR-1262-2	8.175f	6.799	136246	196185	0.844	1.923 #
38) L8 AR-1262-3	0.000	7.372	0	43546	N.D.	0.511 #
39) L8 AR-1262-4	8.637f	7.440	142175	71619	2.965	0.461 #
40) L8 AR-1262-5	0.000	7.985	0	69404	N.D.	0.892 #
41) L9 AR-1268-1	0.000	7.372	0	43546	N.D.	0.172 #
42) L9 AR-1268-2	8.637f	7.440	142175	71619	0.812	0.317 #
43) L9 AR-1268-3	8.868	7.670	241556	87484	1.565	0.449 #

Data Path : Z:\pestpcbsrv\HPCHEM1\ECD_P\Data\PP021122\
 Data File : PP043595.D
 Signal(s) : Signal #1: ECD1A.ch Signal #2: ECD2B.ch
 Acq On : 11 Feb 2022 10:40
 Operator : YP\AJ
 Sample : I.BLK
 Misc :
 ALS Vial : 2 Sample Multiplier: 1

Instrument :
 ECD_P
 ClientSampleId :
 I.BLK

Integration File signal 1: autoint1.e
 Integration File signal 2: autoint2.e
 Quant Time: Feb 12 04:39:10 2022
 Quant Method : Z:\pestpcbsrv\HPCHEM1\ECD_P\methods\PP021022.M
 Quant Title : GC EXTRACTABLES
 QLast Update : Fri Feb 11 04:48:05 2022
 Response via : Initial Calibration
 Integrator: ChemStation

Volume Inj. : 2 µl
 Signal #1 Phase : ZB-MR1 Signal #2 Phase: ZB-MR2
 Signal #1 Info : 30Mx0.32mmx 0.50µ Signal #2 Info : 30M x 0.32mm x 0.25µm

	Compound	RT#1	RT#2	Resp#1	Resp#2	ng/ml	ng/ml
44)	L9 AR-1268-4	0.000	7.985	0	69404	N.D.	0.772 #
45)	L9 AR-1268-5	9.731	8.292	86731	165337	0.191	0.275 #

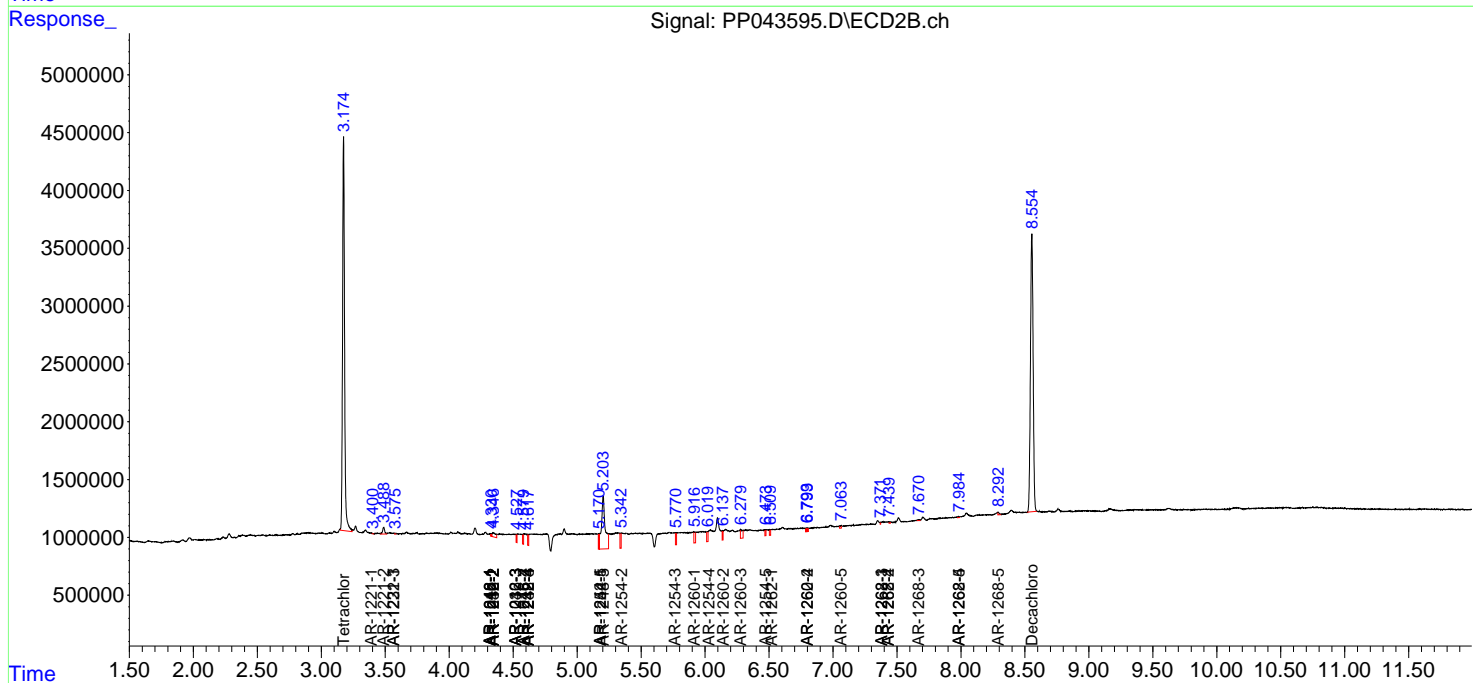
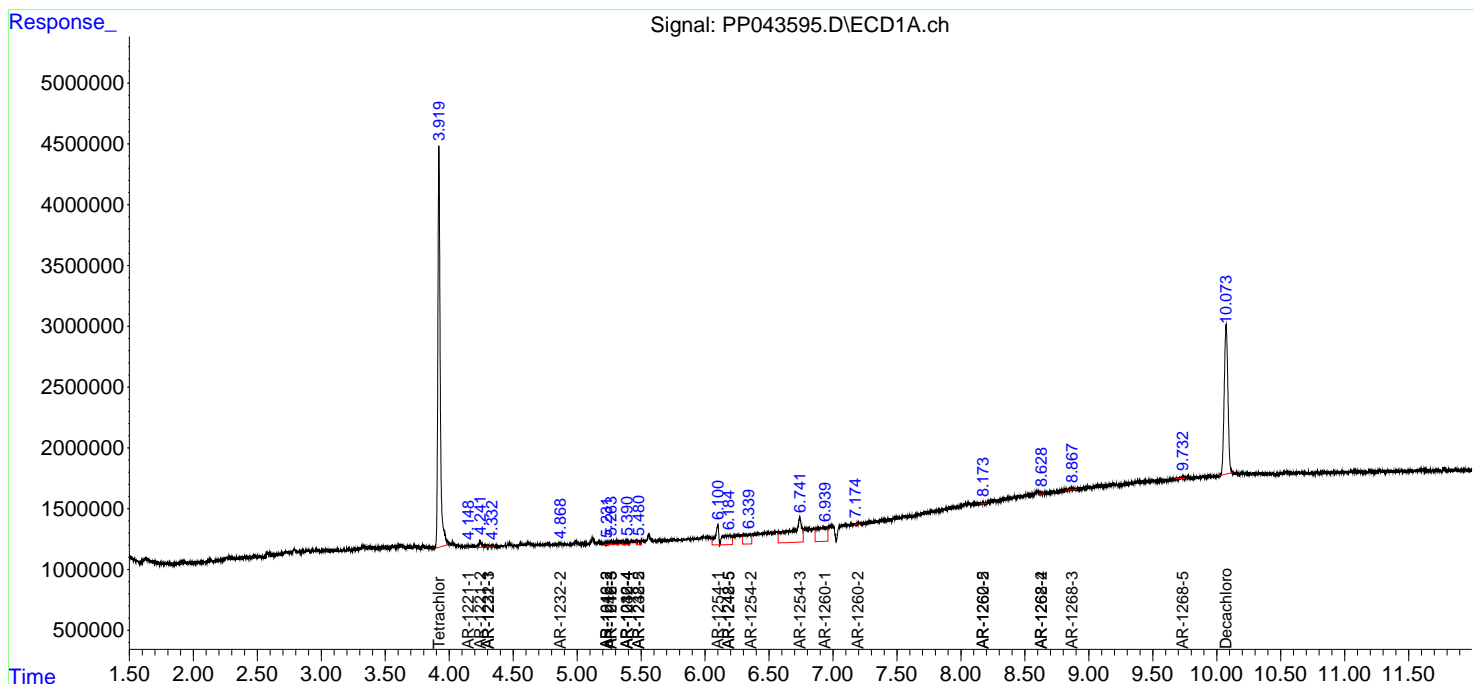
(f)=RT Delta > 1/2 Window (#)=Amounts differ by > 25% (m)=manual int.

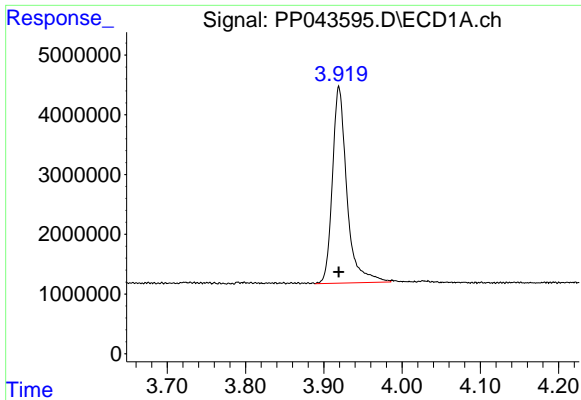
Data Path : Z:\pestpcbsrv\HPCHEM1\ECD_P\Data\PP021122\
 Data File : PP043595.D
 Signal(s) : Signal #1: ECD1A.ch Signal #2: ECD2B.ch
 Acq On : 11 Feb 2022 10:40
 Operator : YP\AJ
 Sample : I.BLK
 Misc :
 ALS Vial : 2 Sample Multiplier: 1

Instrument :
 ECD_P
ClientSampleId :
 I.BLK

Integration File signal 1: autoint1.e
 Integration File signal 2: autoint2.e
 Quant Time: Feb 12 04:39:10 2022
 Quant Method : Z:\pestpcbsrv\HPCHEM1\ECD_P\methods\PP021022.M
 Quant Title : GC EXTRACTABLES
 QLast Update : Fri Feb 11 04:48:05 2022
 Response via : Initial Calibration
 Integrator: ChemStation

Volume Inj. : 2 µl
 Signal #1 Phase : ZB-MR1 Signal #2 Phase: ZB-MR2
 Signal #1 Info : 30Mx0.32mmx 0.50µ Signal #2 Info : 30M x 0.32mm x 0.25µm

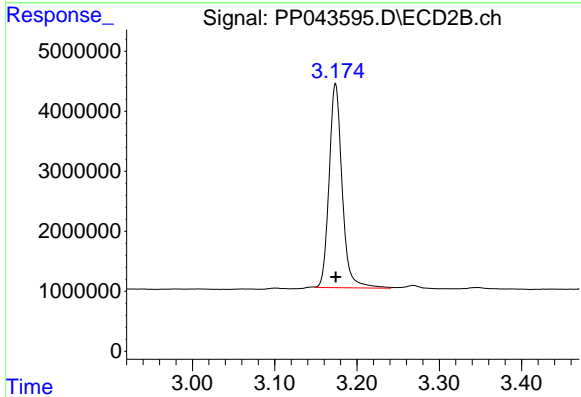




#1 Tetrachloro-m-xylene

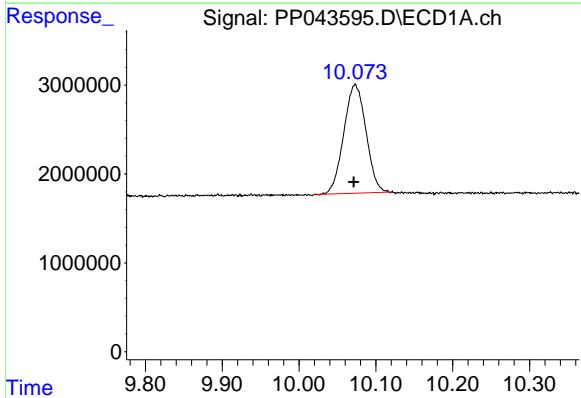
R.T.: 3.919 min
 Delta R.T.: 0.000 min
 Response: 42320166
 Conc: 19.14 ng/ml

Instrument :
 ECD_P
 ClientSampleId :
 I.BLK



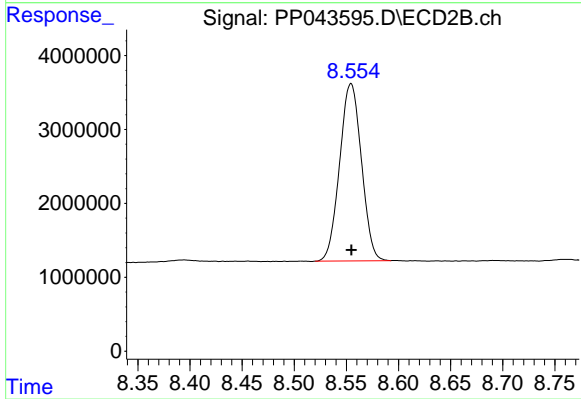
#1 Tetrachloro-m-xylene

R.T.: 3.174 min
 Delta R.T.: 0.000 min
 Response: 37455602
 Conc: 19.94 ng/ml



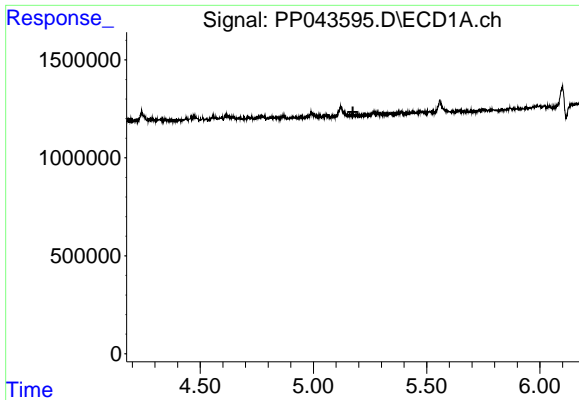
#2 Decachlorobiphenyl

R.T.: 10.073 min
 Delta R.T.: 0.002 min
 Response: 24535388
 Conc: 20.65 ng/ml



#2 Decachlorobiphenyl

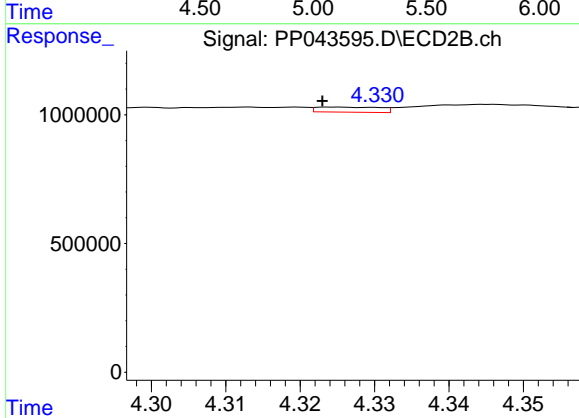
R.T.: 8.555 min
 Delta R.T.: 0.000 min
 Response: 34912183
 Conc: 21.52 ng/ml



#3 AR-1016-1

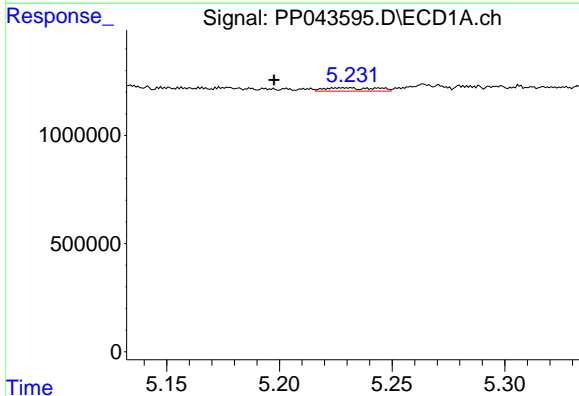
R.T.: 0.000 min
 Exp R.T.: 5.174 min
 Response: 0
 Conc: N.D.

Instrument :
 ECD_P
 ClientSampleId :
 I.BLK



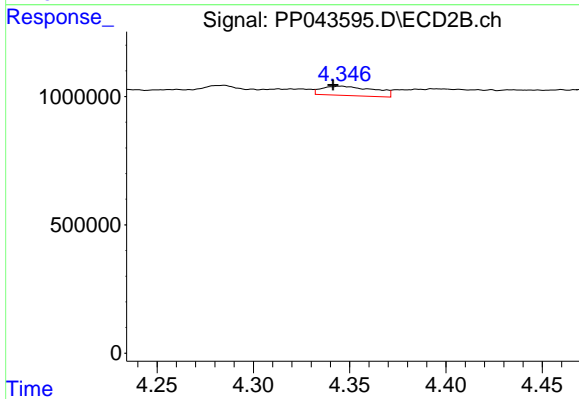
#3 AR-1016-1

R.T.: 4.325 min
 Delta R.T.: 0.002 min
 Response: 117229
 Conc: 1.91 ng/ml



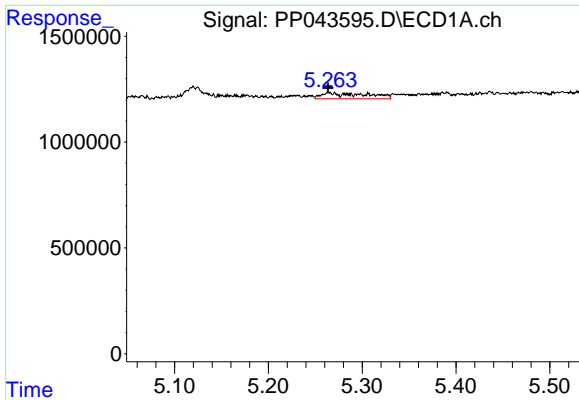
#4 AR-1016-2

R.T.: 5.228 min
 Delta R.T.: 0.031 min
 Response: 244966
 Conc: 2.32 ng/ml



#4 AR-1016-2

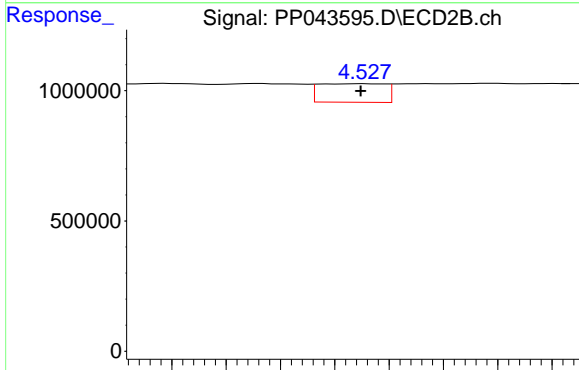
R.T.: 4.346 min
 Delta R.T.: 0.004 min
 Response: 686525
 Conc: 8.13 ng/ml



#5 AR-1016-3

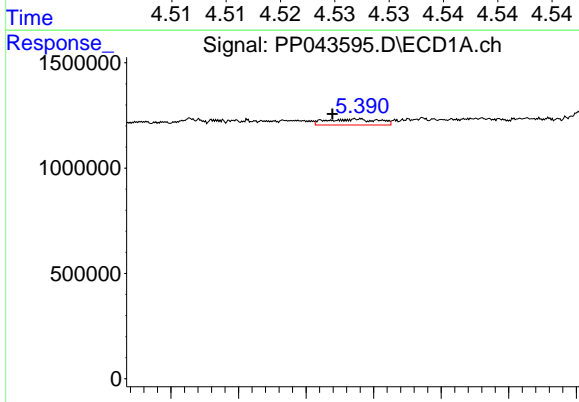
R.T.: 5.265 min
 Delta R.T.: 0.001 min
 Response: 947471
 Conc: 14.39 ng/ml

Instrument :
 ECD_P
 ClientSampleId :
 I.BLK



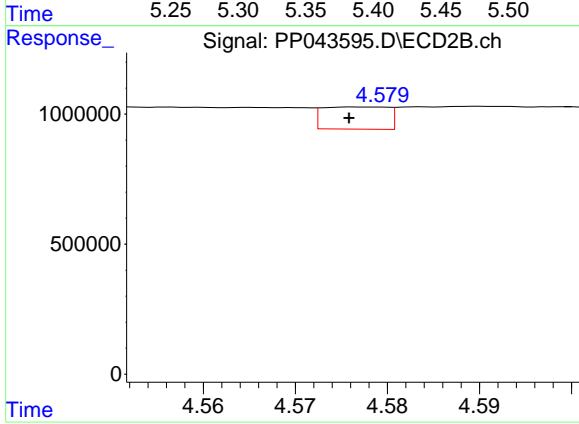
#5 AR-1016-3

R.T.: 4.528 min
 Delta R.T.: 0.000 min
 Response: 300184
 Conc: 6.43 ng/ml



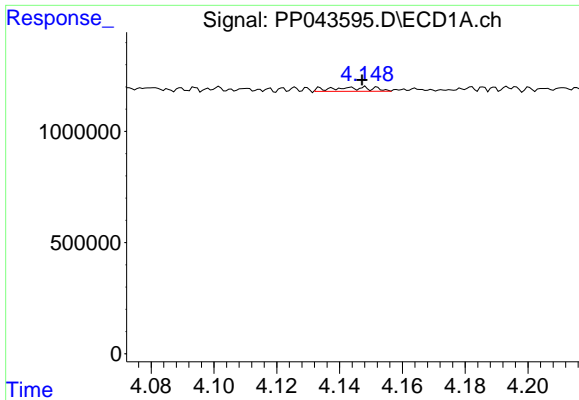
#6 AR-1016-4

R.T.: 5.388 min
 Delta R.T.: 0.018 min
 Response: 761773
 Conc: 14.05 ng/ml



#6 AR-1016-4

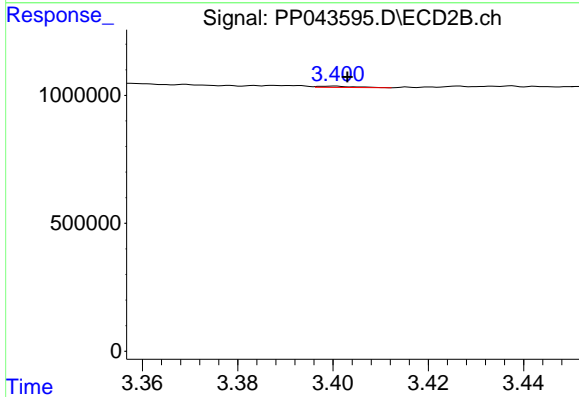
R.T.: 4.577 min
 Delta R.T.: 0.000 min
 Response: 420847
 Conc: 11.26 ng/ml



#8 AR-1221-1

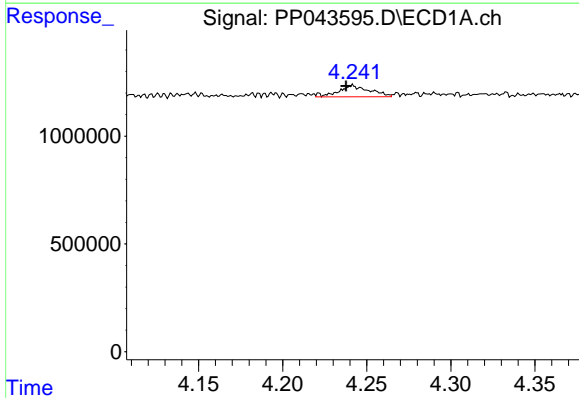
R.T.: 4.148 min
 Delta R.T.: 0.000 min
 Response: 175387
 Conc: 6.89 ng/ml

Instrument :
 ECD_P
 ClientSampleId :
 I.BLK



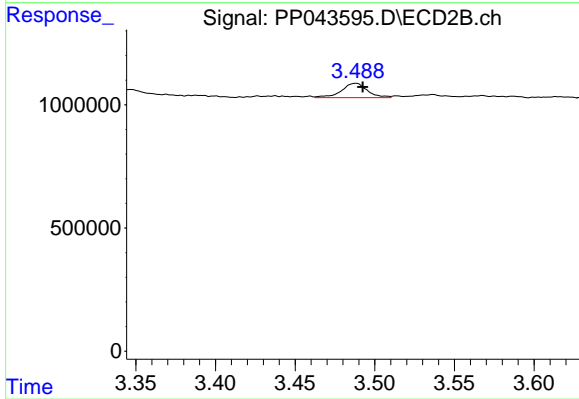
#8 AR-1221-1

R.T.: 3.400 min
 Delta R.T.: -0.003 min
 Response: 26639
 Conc: 1.12 ng/ml



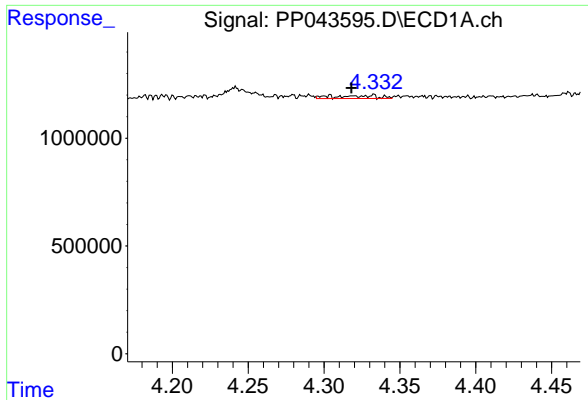
#9 AR-1221-2

R.T.: 4.241 min
 Delta R.T.: 0.004 min
 Response: 690682
 Conc: 35.98 ng/ml



#9 AR-1221-2

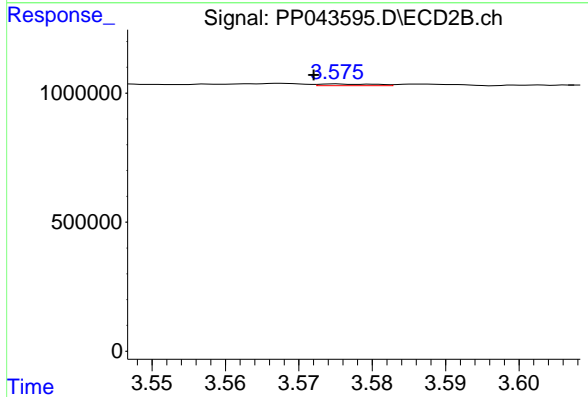
R.T.: 3.488 min
 Delta R.T.: -0.004 min
 Response: 657873
 Conc: 36.43 ng/ml



#10 AR-1221-3

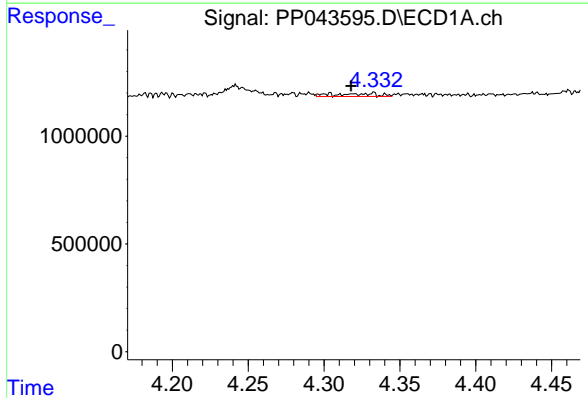
R.T.: 4.304 min
 Delta R.T.: -0.014 min
 Response: 281817
 Conc: 4.91 ng/ml

Instrument :
 ECD_P
 ClientSampleId :
 I.BLK



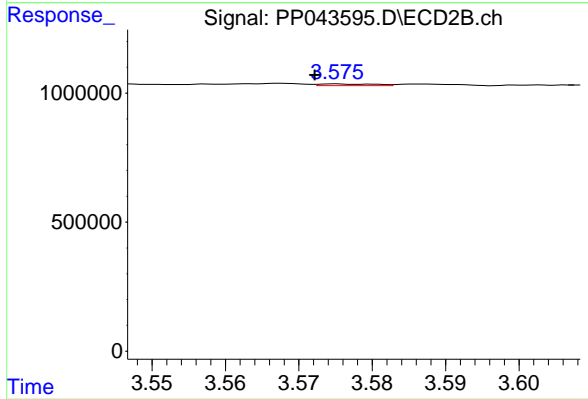
#10 AR-1221-3

R.T.: 3.575 min
 Delta R.T.: 0.003 min
 Response: 34884
 Conc: 0.68 ng/ml



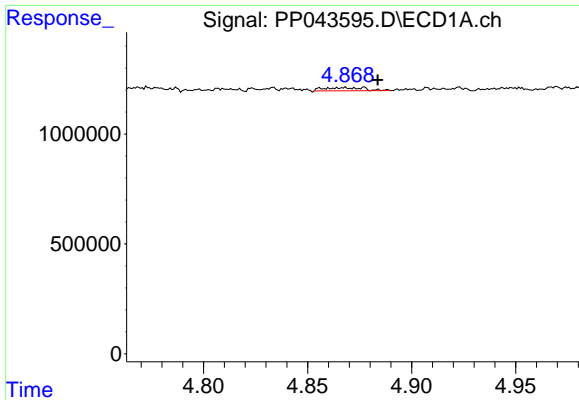
#11 AR-1232-1

R.T.: 4.304 min
 Delta R.T.: -0.014 min
 Response: 281817
 Conc: 5.81 ng/ml



#11 AR-1232-1

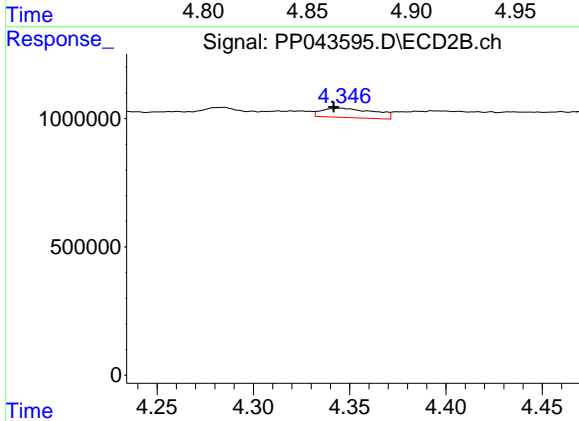
R.T.: 3.575 min
 Delta R.T.: 0.003 min
 Response: 34884
 Conc: 0.81 ng/ml



#12 AR-1232-2

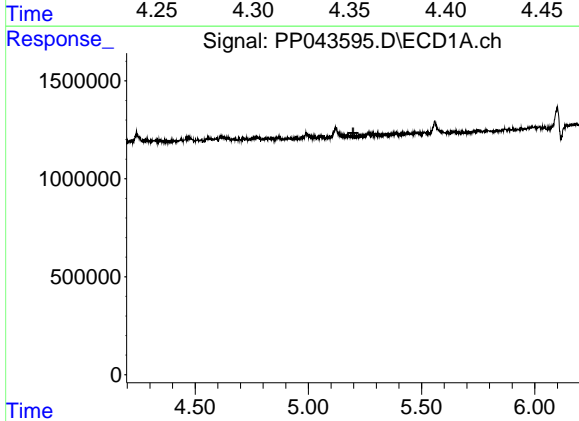
R.T.: 4.868 min
 Delta R.T.: -0.016 min
 Response: 195409
 Conc: 8.25 ng/ml

Instrument :
 ECD_P
 ClientSampleId :
 I.BLK



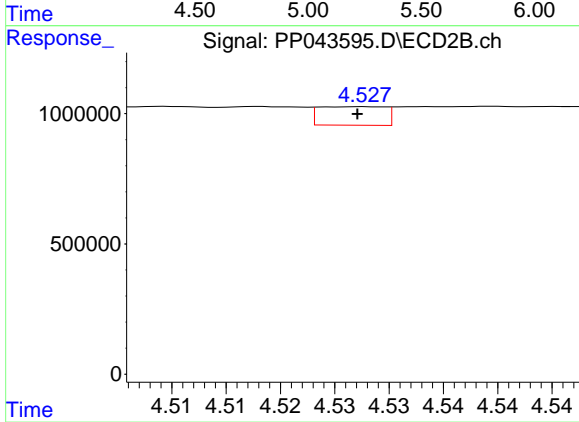
#12 AR-1232-2

R.T.: 4.346 min
 Delta R.T.: 0.004 min
 Response: 686525
 Conc: 19.23 ng/ml



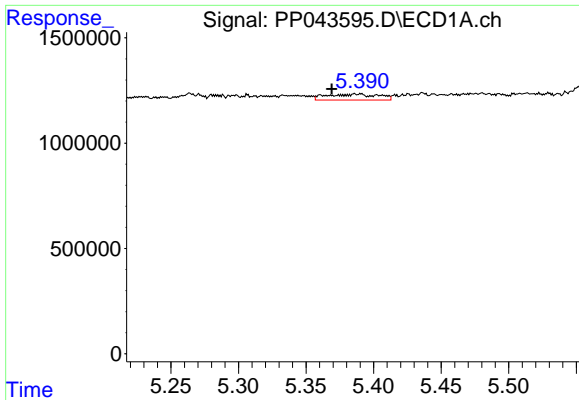
#13 AR-1232-3

R.T.: 0.000 min
 Exp R.T. : 5.197 min
 Response: 0
 Conc: N.D.



#13 AR-1232-3

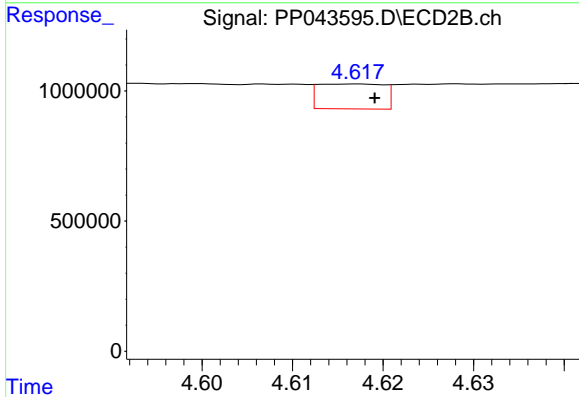
R.T.: 4.528 min
 Delta R.T.: 0.000 min
 Response: 300184
 Conc: 15.35 ng/ml



#14 AR-1232-4

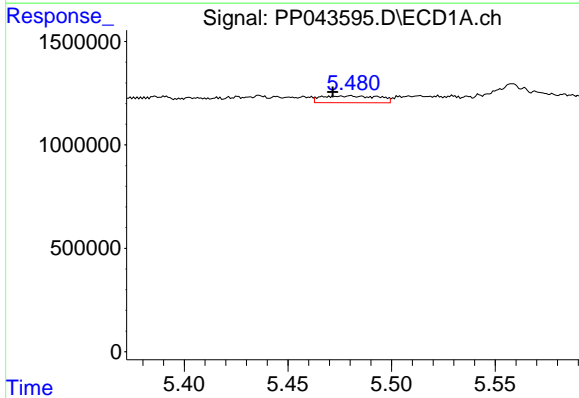
R.T.: 5.388 min
 Delta R.T.: 0.019 min
 Response: 761773
 Conc: 34.90 ng/ml

Instrument :
 ECD_P
 ClientSampleId :
 I.BLK



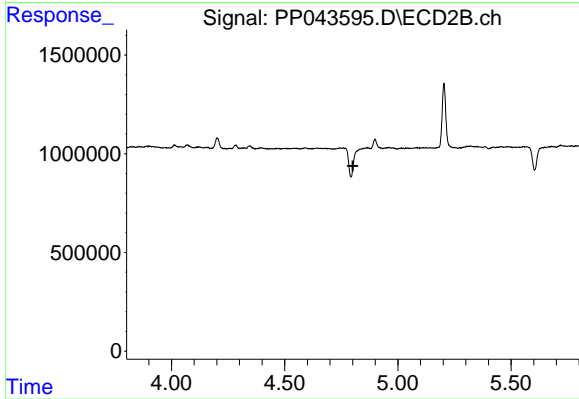
#14 AR-1232-4

R.T.: 4.617 min
 Delta R.T.: -0.002 min
 Response: 481477
 Conc: 27.84 ng/ml



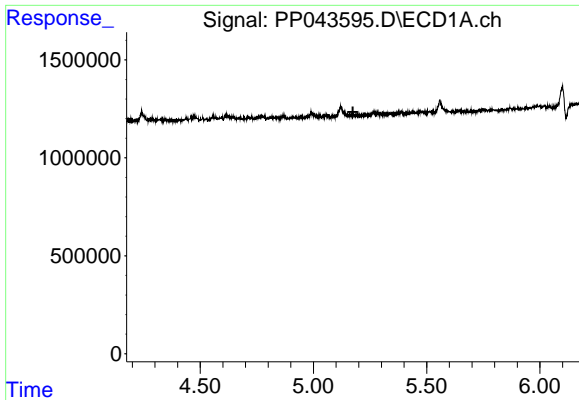
#15 AR-1232-5

R.T.: 5.480 min
 Delta R.T.: 0.008 min
 Response: 632243
 Conc: 39.20 ng/ml



#15 AR-1232-5

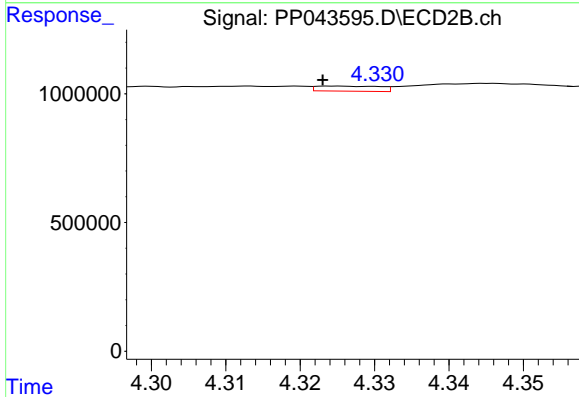
R.T.: 0.000 min
 Exp R.T. : 4.801 min
 Response: 0
 Conc: N.D.



#16 AR-1242-1

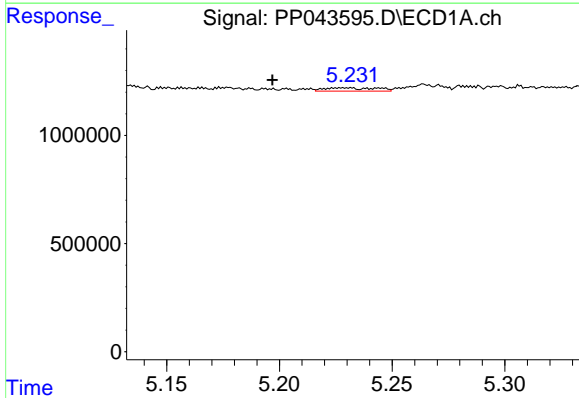
R.T.: 0.000 min
 Exp R.T.: 5.174 min
 Response: 0
 Conc: N.D.

Instrument :
 ECD_P
 ClientSampleId :
 I.BLK



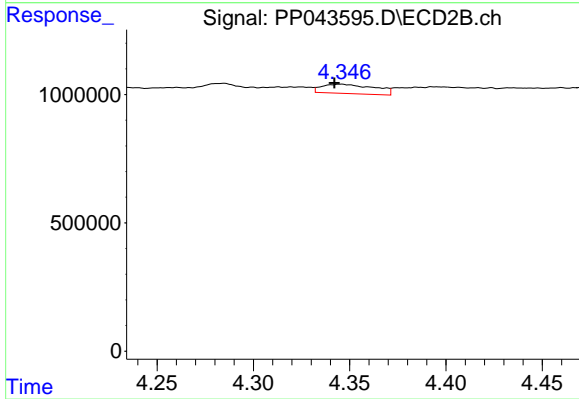
#16 AR-1242-1

R.T.: 4.325 min
 Delta R.T.: 0.002 min
 Response: 117229
 Conc: 2.40 ng/ml



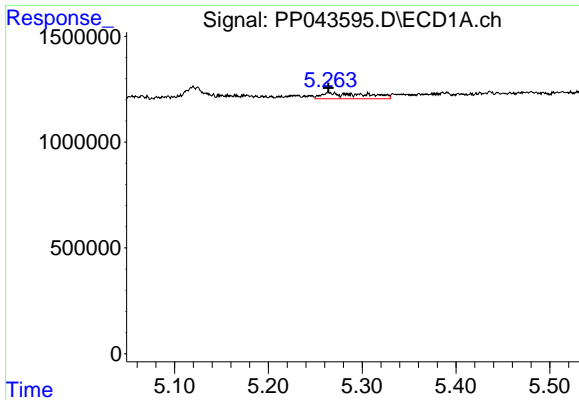
#17 AR-1242-2

R.T.: 5.228 min
 Delta R.T.: 0.031 min
 Response: 244966
 Conc: 2.96 ng/ml



#17 AR-1242-2

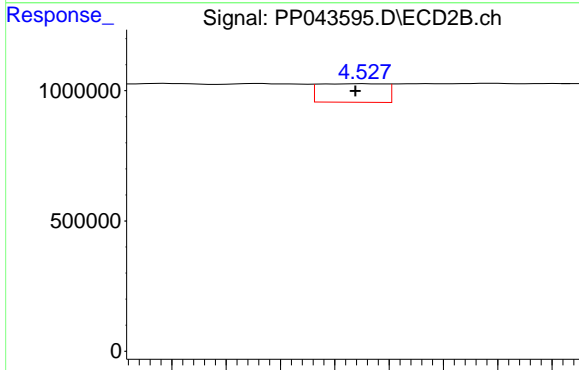
R.T.: 4.346 min
 Delta R.T.: 0.003 min
 Response: 686525
 Conc: 10.20 ng/ml



#18 AR-1242-3

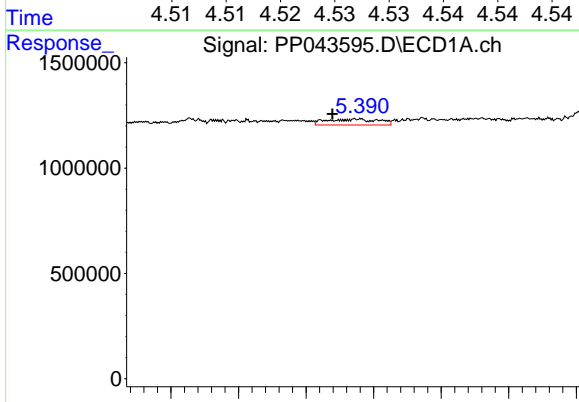
R.T.: 5.265 min
 Delta R.T.: 0.001 min
 Response: 947471
 Conc: 18.31 ng/ml

Instrument :
 ECD_P
 ClientSampleId :
 I.BLK



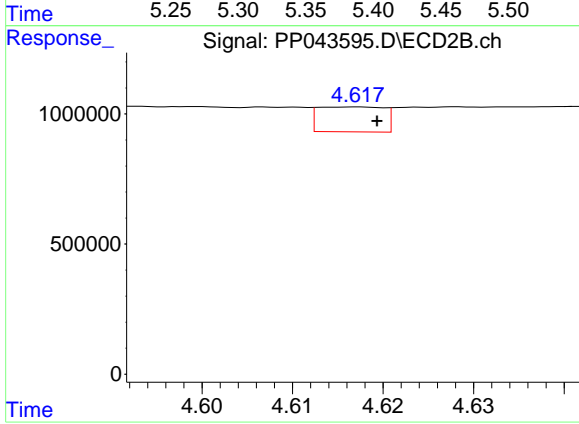
#18 AR-1242-3

R.T.: 4.528 min
 Delta R.T.: 0.000 min
 Response: 300184
 Conc: 8.00 ng/ml



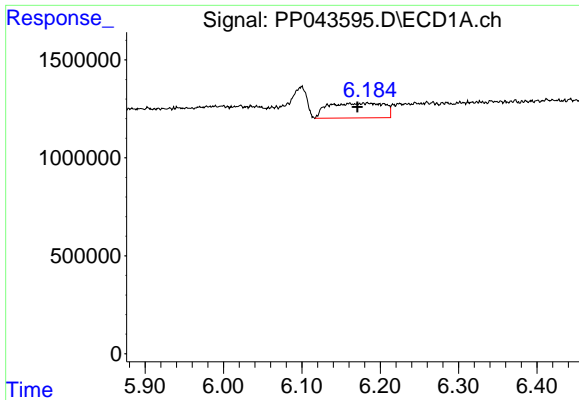
#19 AR-1242-4

R.T.: 5.388 min
 Delta R.T.: 0.018 min
 Response: 761773
 Conc: 17.83 ng/ml



#19 AR-1242-4

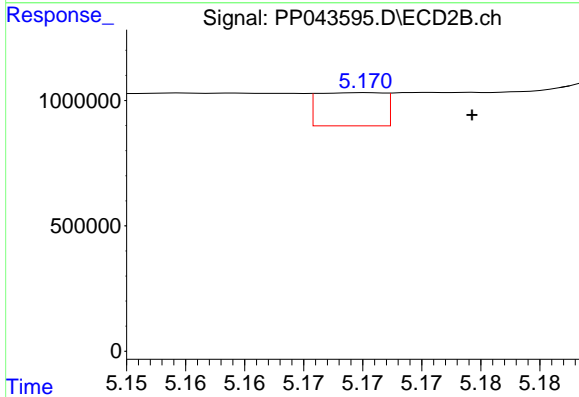
R.T.: 4.617 min
 Delta R.T.: -0.002 min
 Response: 481477
 Conc: 13.33 ng/ml



#20 AR-1242-5

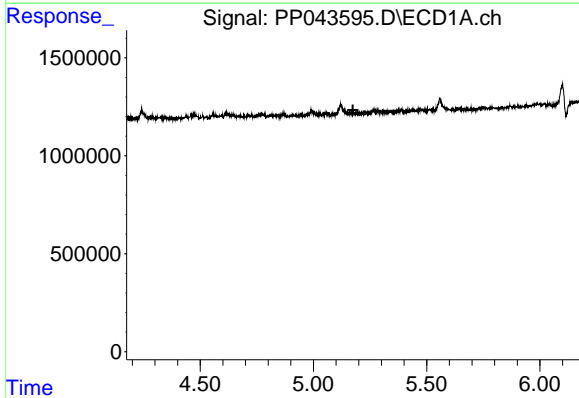
R.T.: 6.184 min
 Delta R.T.: 0.013 min
 Response: 3741288
 Conc: 86.64 ng/ml

Instrument :
 ECD_P
 ClientSampleId :
 I.BLK



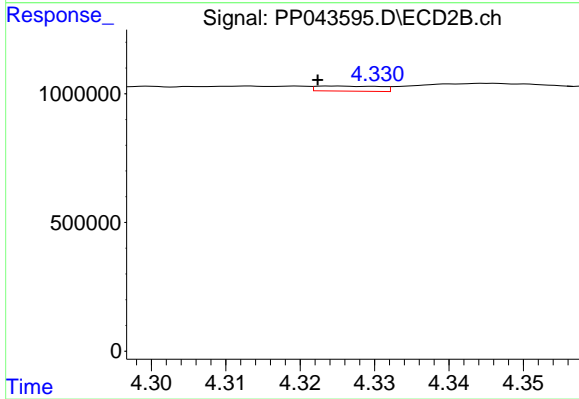
#20 AR-1242-5

R.T.: 5.170 min
 Delta R.T.: -0.009 min
 Response: 516114
 Conc: 11.99 ng/ml



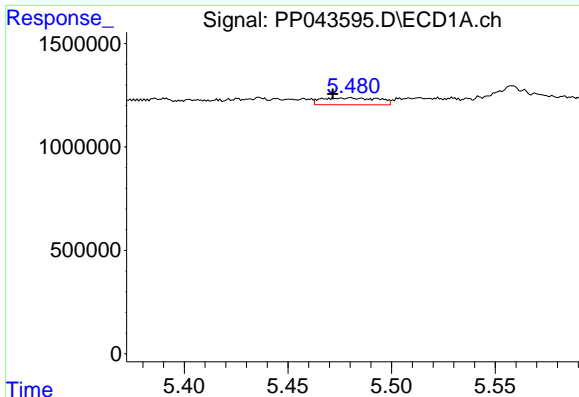
#21 AR-1248-1

R.T.: 0.000 min
 Exp R.T. : 5.174 min
 Response: 0
 Conc: N.D.



#21 AR-1248-1

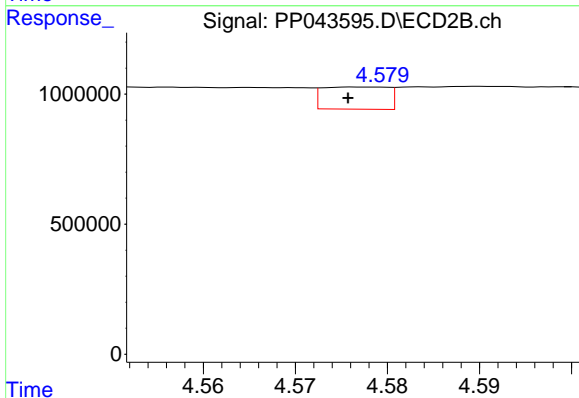
R.T.: 4.325 min
 Delta R.T.: 0.002 min
 Response: 117229
 Conc: 3.15 ng/ml



#22 AR-1248-2

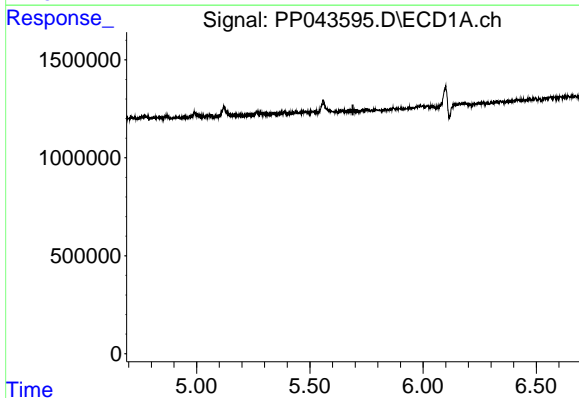
R.T.: 5.480 min
 Delta R.T.: 0.008 min
 Response: 632243
 Conc: 11.13 ng/ml

Instrument :
 ECD_P
 ClientSampleId :
 I.BLK



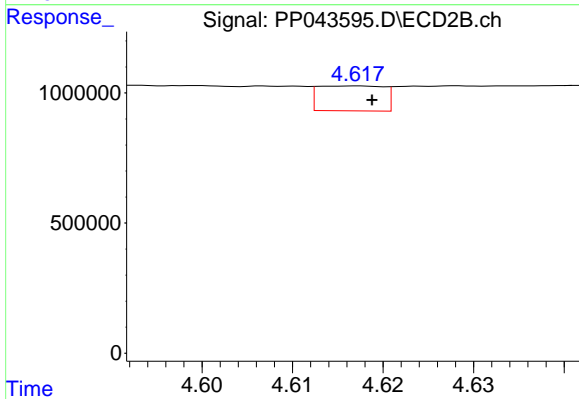
#22 AR-1248-2

R.T.: 4.577 min
 Delta R.T.: 0.000 min
 Response: 420847
 Conc: 8.60 ng/ml



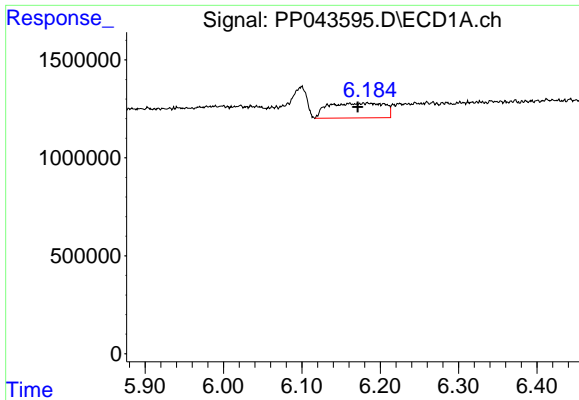
#23 AR-1248-3

R.T.: 0.000 min
 Exp R.T. : 5.690 min
 Response: 0
 Conc: N.D.



#23 AR-1248-3

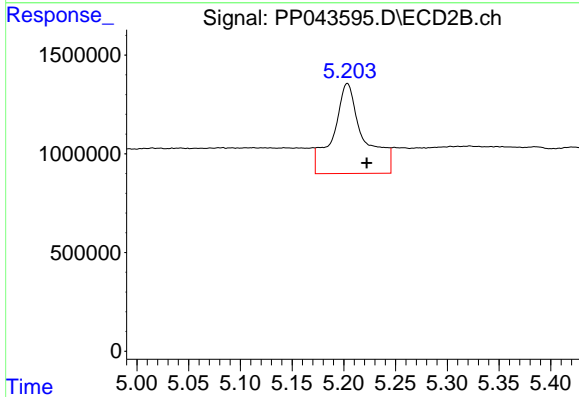
R.T.: 4.617 min
 Delta R.T.: -0.002 min
 Response: 481477
 Conc: 9.38 ng/ml



#25 AR-1248-5

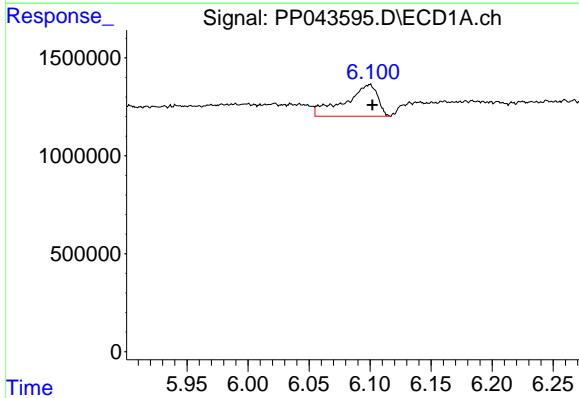
R.T.: 6.184 min
 Delta R.T.: 0.012 min
 Response: 3741288
 Conc: 54.12 ng/ml

Instrument :
 ECD_P
 ClientSampleId :
 I.BLK



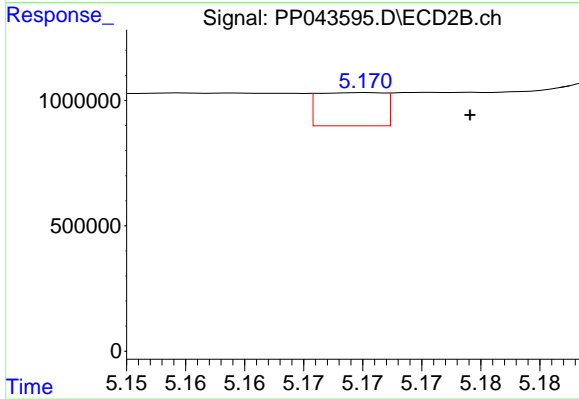
#25 AR-1248-5

R.T.: 5.203 min
 Delta R.T.: -0.019 min
 Response: 9356667
 Conc: 163.30 ng/ml



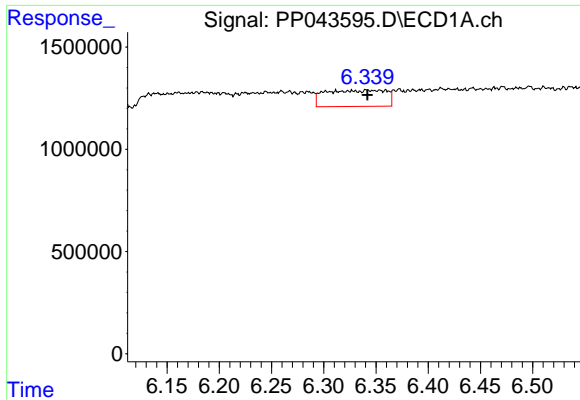
#26 AR-1254-1

R.T.: 6.099 min
 Delta R.T.: -0.003 min
 Response: 3011174
 Conc: 39.85 ng/ml



#26 AR-1254-1

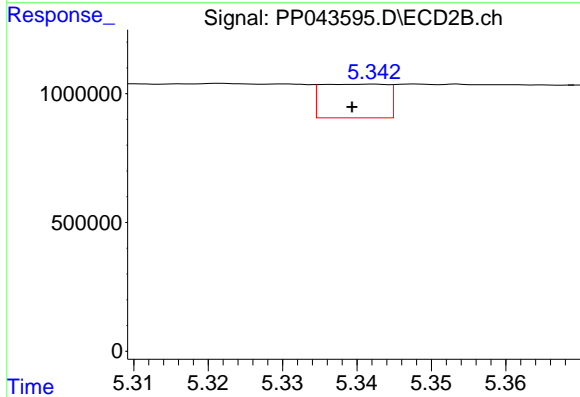
R.T.: 5.170 min
 Delta R.T.: -0.009 min
 Response: 516114
 Conc: 5.91 ng/ml



#27 AR-1254-2

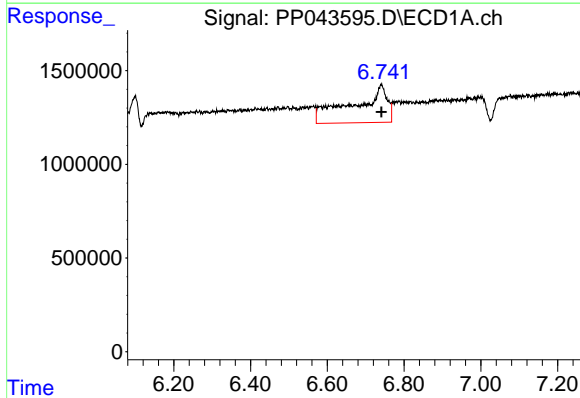
R.T.: 6.353 min
 Delta R.T.: 0.011 min
 Response: 3204972
 Conc: 28.57 ng/ml

Instrument :
 ECD_P
 ClientSampleId :
 I.BLK



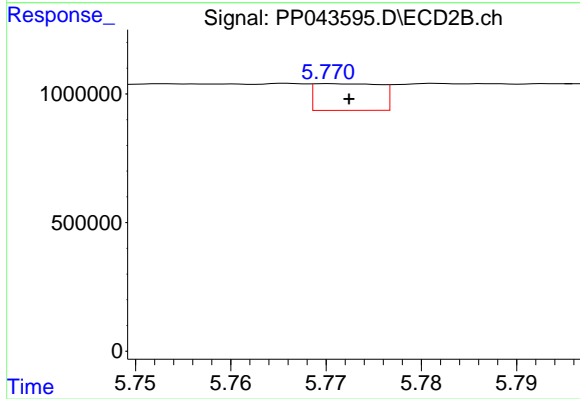
#27 AR-1254-2

R.T.: 5.342 min
 Delta R.T.: 0.003 min
 Response: 804832
 Conc: 10.55 ng/ml



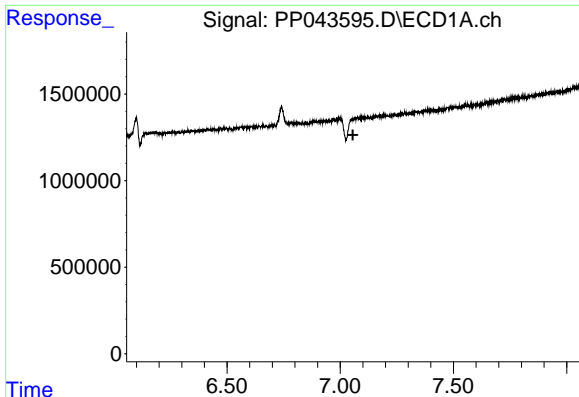
#28 AR-1254-3

R.T.: 6.741 min
 Delta R.T.: 0.000 min
 Response: 12230890
 Conc: 105.70 ng/ml



#28 AR-1254-3

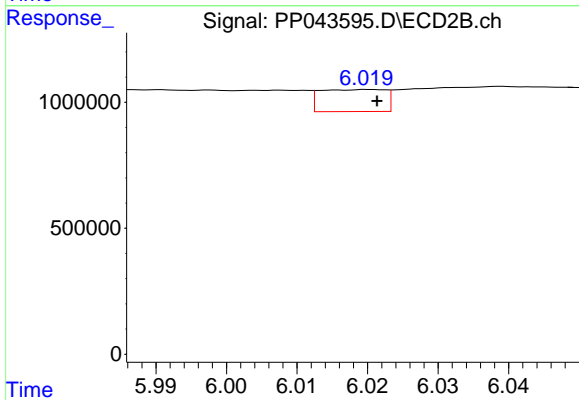
R.T.: 5.770 min
 Delta R.T.: -0.002 min
 Response: 496713
 Conc: 4.05 ng/ml



#29 AR-1254-4

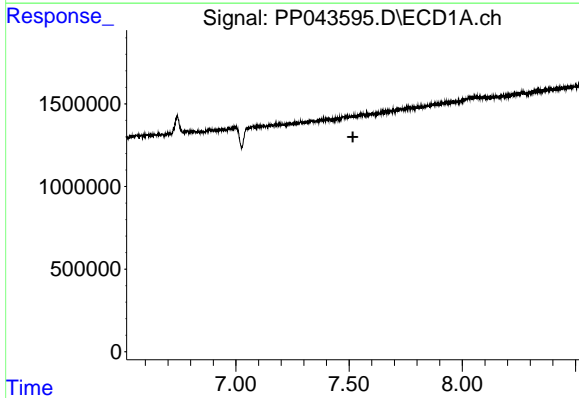
R.T.: 0.000 min
 Exp R.T.: 7.056 min
 Response: 0
 Conc: N.D.

Instrument :
 ECD_P
 ClientSampleId :
 I.BLK



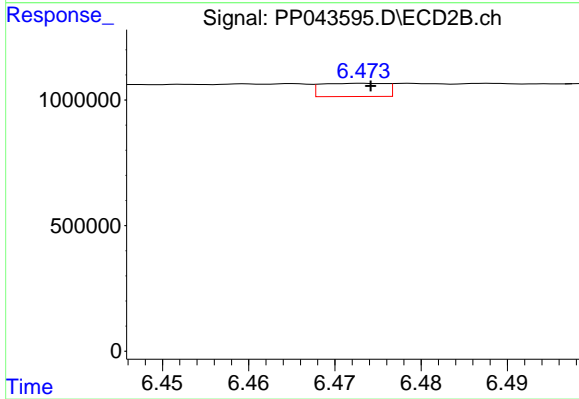
#29 AR-1254-4

R.T.: 6.020 min
 Delta R.T.: -0.001 min
 Response: 556467
 Conc: 7.05 ng/ml



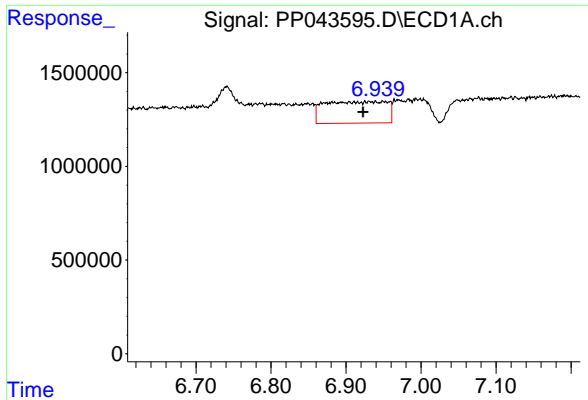
#30 AR-1254-5

R.T.: 0.000 min
 Exp R.T.: 7.517 min
 Response: 0
 Conc: N.D.



#30 AR-1254-5

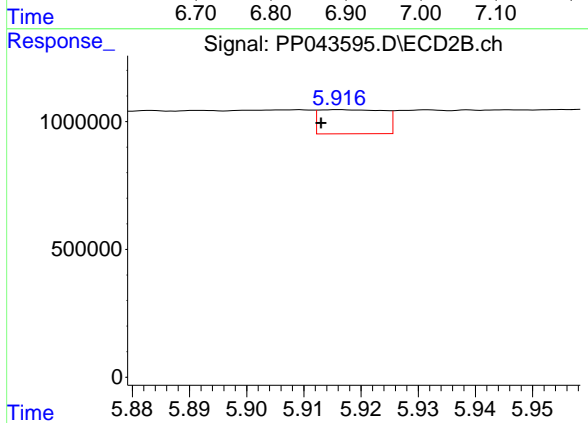
R.T.: 6.473 min
 Delta R.T.: 0.000 min
 Response: 273594
 Conc: 2.37 ng/ml



#31 AR-1260-1

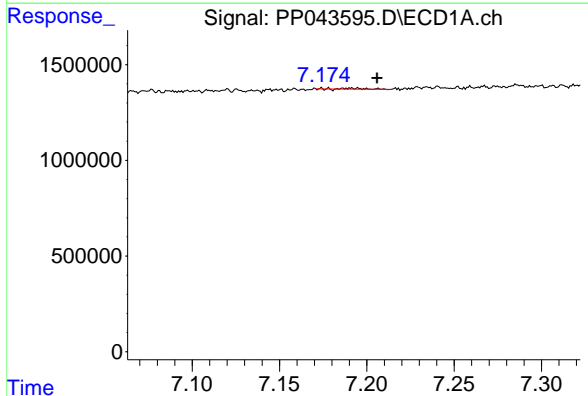
R.T.: 6.932 min
 Delta R.T.: 0.009 min
 Response: 6642938
 Conc: 79.33 ng/ml

Instrument :
 ECD_P
 ClientSampleId :
 I.BLK



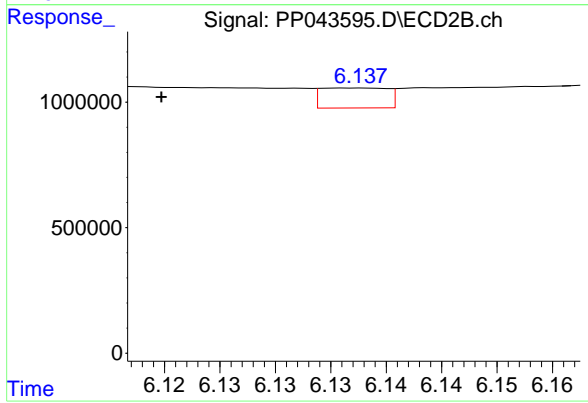
#31 AR-1260-1

R.T.: 5.916 min
 Delta R.T.: 0.003 min
 Response: 738145
 Conc: 9.23 ng/ml



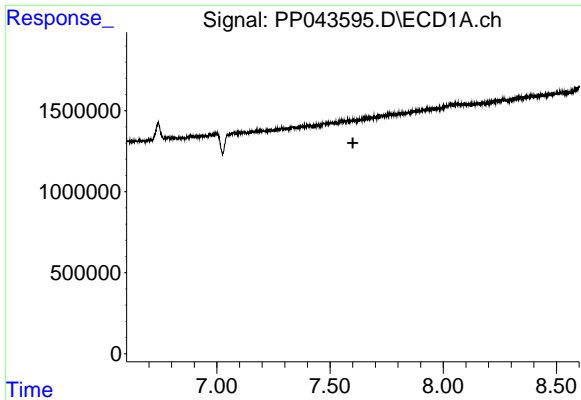
#32 AR-1260-2

R.T.: 7.191 min
 Delta R.T.: -0.015 min
 Response: 35488
 Conc: 0.39 ng/ml



#32 AR-1260-2

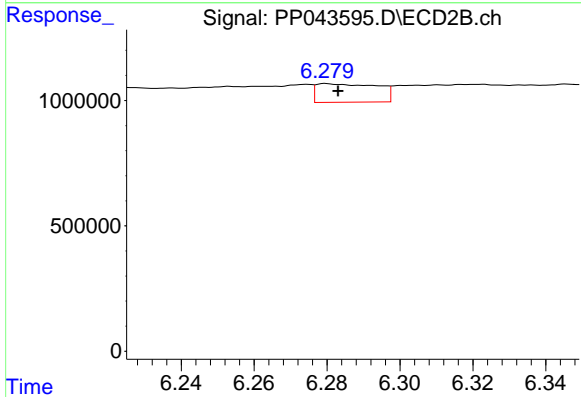
R.T.: 6.137 min
 Delta R.T.: 0.017 min
 Response: 331642
 Conc: 3.40 ng/ml



#33 AR-1260-3

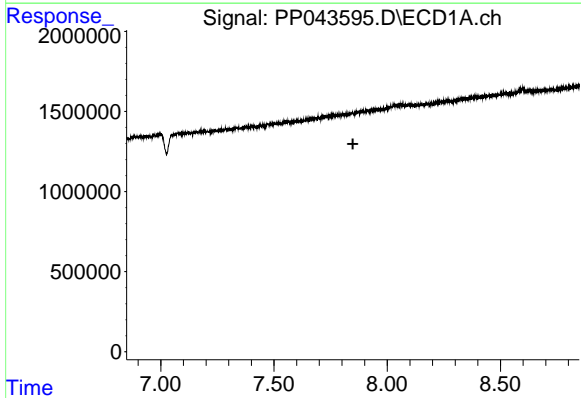
R.T.: 0.000 min
 Exp R.T. : 7.601 min
 Response: 0
 Conc: N.D.

Instrument :
 ECD_P
 ClientSampleId :
 I.BLK



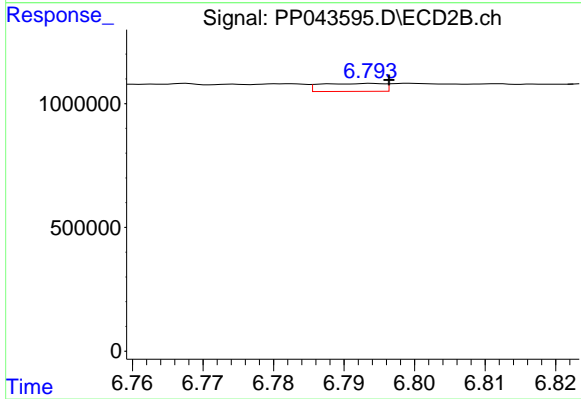
#33 AR-1260-3

R.T.: 6.280 min
 Delta R.T.: -0.003 min
 Response: 863101
 Conc: 9.45 ng/ml



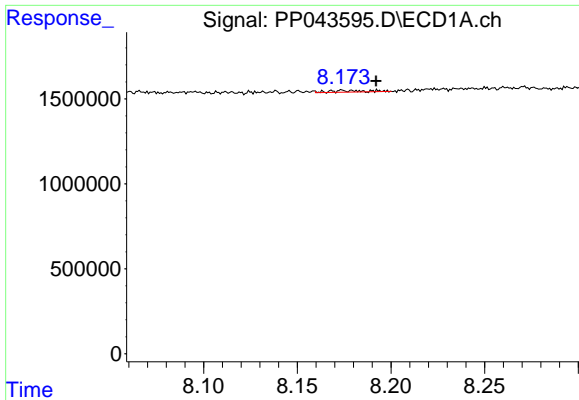
#34 AR-1260-4

R.T.: 0.000 min
 Exp R.T. : 7.849 min
 Response: 0
 Conc: N.D.



#34 AR-1260-4

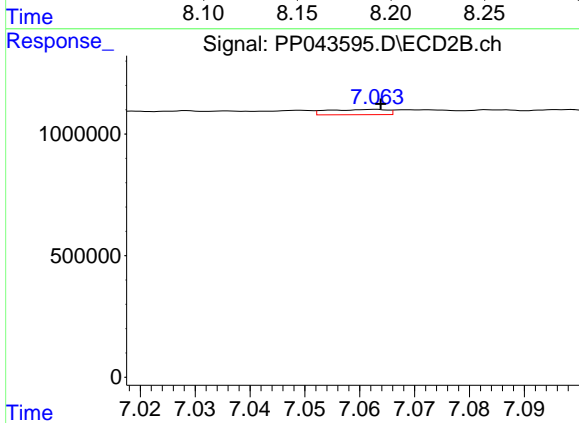
R.T.: 6.794 min
 Delta R.T.: -0.002 min
 Response: 197328
 Conc: 2.44 ng/ml



#35 AR-1260-5

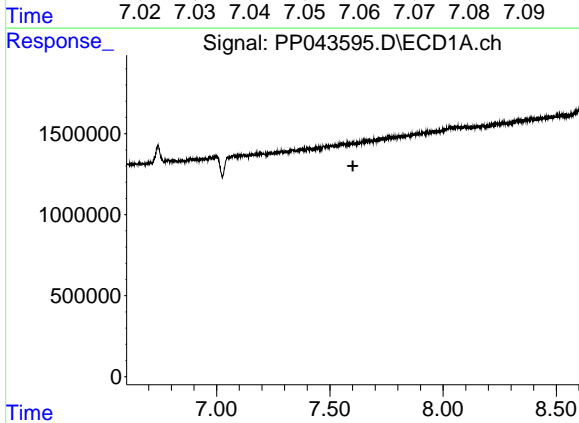
R.T.: 8.175 min
 Delta R.T.: -0.017 min
 Response: 136246
 Conc: 0.88 ng/ml

Instrument :
 ECD_P
 ClientSampleId :
 I.BLK



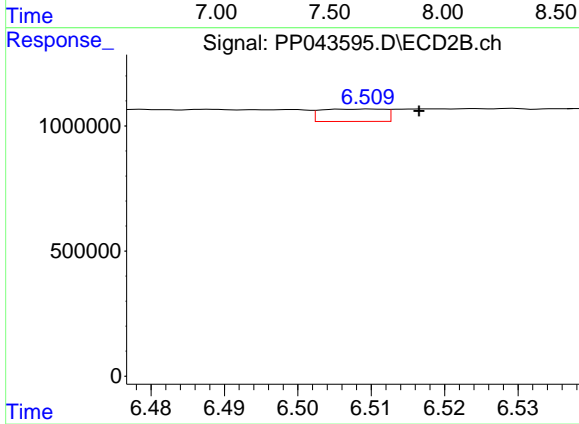
#35 AR-1260-5

R.T.: 7.063 min
 Delta R.T.: 0.000 min
 Response: 160578
 Conc: 0.87 ng/ml



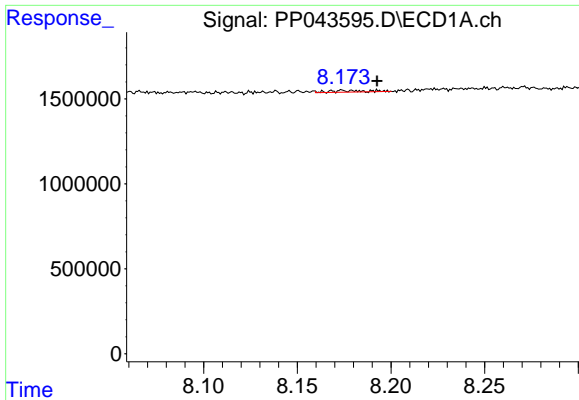
#36 AR-1262-1

R.T.: 0.000 min
 Exp R.T. : 7.602 min
 Response: 0
 Conc: N.D.



#36 AR-1262-1

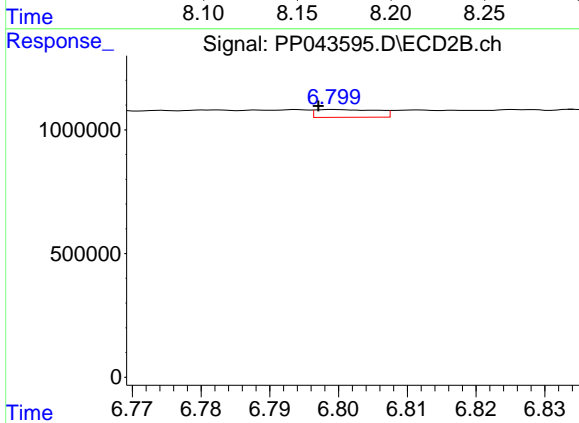
R.T.: 6.510 min
 Delta R.T.: -0.006 min
 Response: 297972
 Conc: 2.71 ng/ml



#37 AR-1262-2

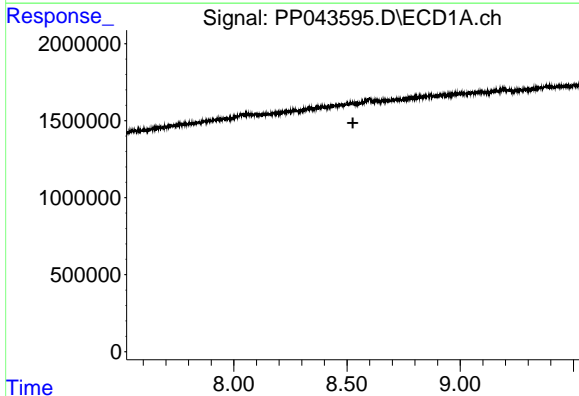
R.T.: 8.175 min
 Delta R.T.: -0.017 min
 Response: 136246
 Conc: 0.84 ng/ml

Instrument :
 ECD_P
 ClientSampleId :
 I.BLK



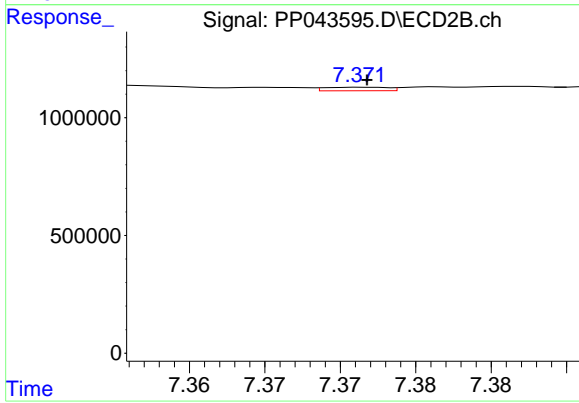
#37 AR-1262-2

R.T.: 6.799 min
 Delta R.T.: 0.002 min
 Response: 196185
 Conc: 1.92 ng/ml



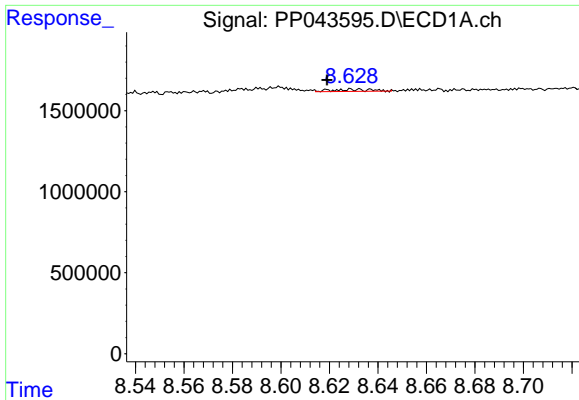
#38 AR-1262-3

R.T.: 0.000 min
 Exp R.T. : 8.526 min
 Response: 0
 Conc: N.D.



#38 AR-1262-3

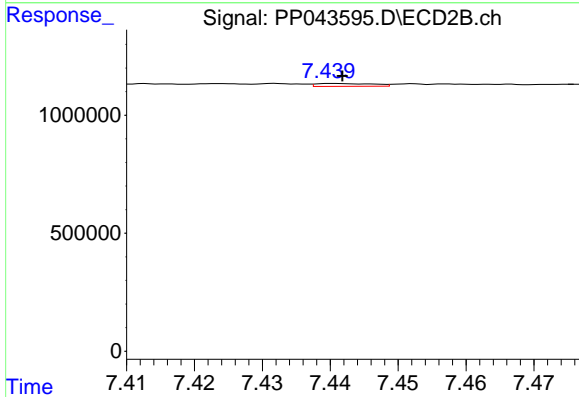
R.T.: 7.372 min
 Delta R.T.: 0.000 min
 Response: 43546
 Conc: 0.51 ng/ml



#39 AR-1262-4

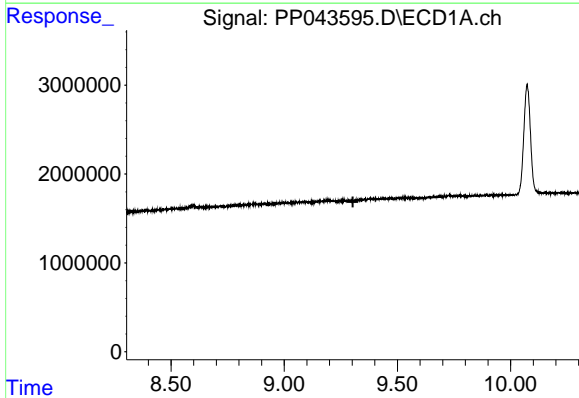
R.T.: 8.637 min
 Delta R.T.: 0.018 min
 Response: 142175
 Conc: 2.96 ng/ml

Instrument :
 ECD_P
 ClientSampleId :
 I.BLK



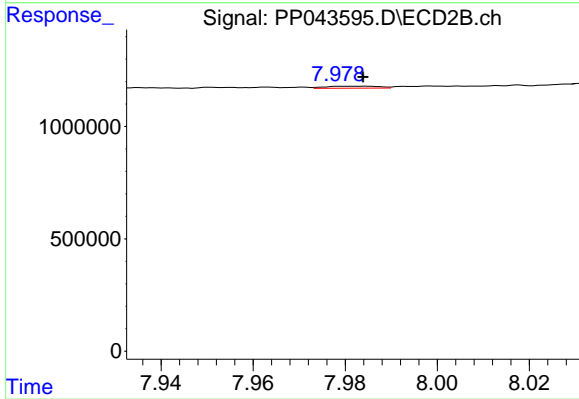
#39 AR-1262-4

R.T.: 7.440 min
 Delta R.T.: -0.001 min
 Response: 71619
 Conc: 0.46 ng/ml



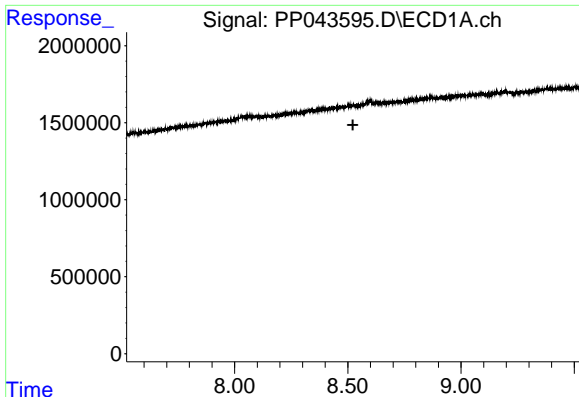
#40 AR-1262-5

R.T.: 0.000 min
 Exp R.T. : 9.303 min
 Response: 0
 Conc: N.D.



#40 AR-1262-5

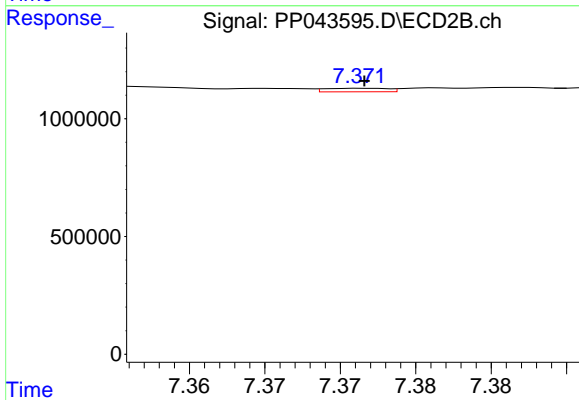
R.T.: 7.985 min
 Delta R.T.: 0.000 min
 Response: 69404
 Conc: 0.89 ng/ml



#41 AR-1268-1

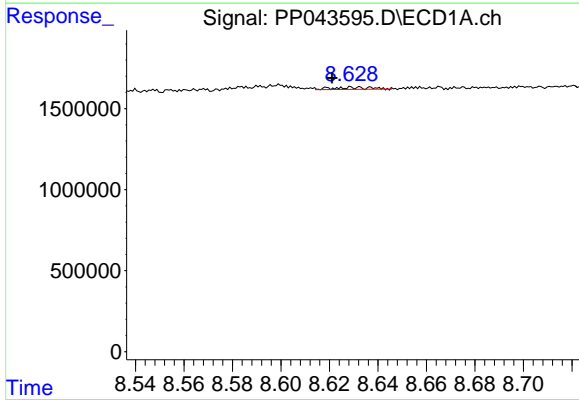
R.T.: 0.000 min
 Exp R.T.: 8.523 min
 Response: 0
 Conc: N.D.

Instrument :
 ECD_P
 ClientSampleId :
 I.BLK



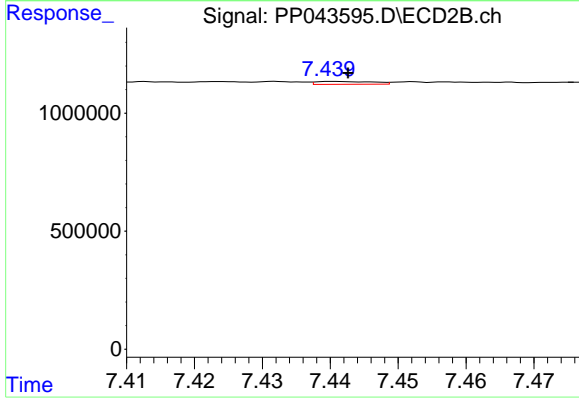
#41 AR-1268-1

R.T.: 7.372 min
 Delta R.T.: 0.000 min
 Response: 43546
 Conc: 0.17 ng/ml



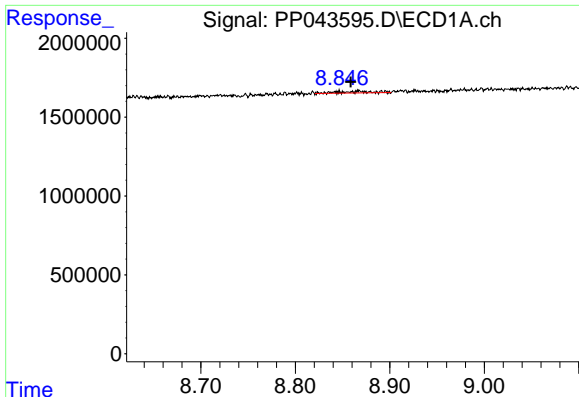
#42 AR-1268-2

R.T.: 8.637 min
 Delta R.T.: 0.015 min
 Response: 142175
 Conc: 0.81 ng/ml



#42 AR-1268-2

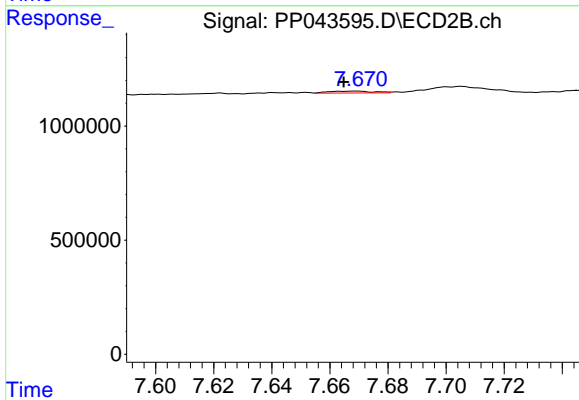
R.T.: 7.440 min
 Delta R.T.: -0.002 min
 Response: 71619
 Conc: 0.32 ng/ml



#43 AR-1268-3

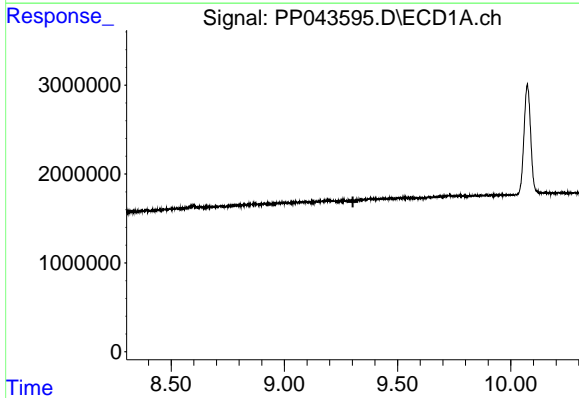
R.T.: 8.868 min
 Delta R.T.: 0.009 min
 Response: 241556
 Conc: 1.56 ng/ml

Instrument :
 ECD_P
 ClientSampleId :
 I.BLK



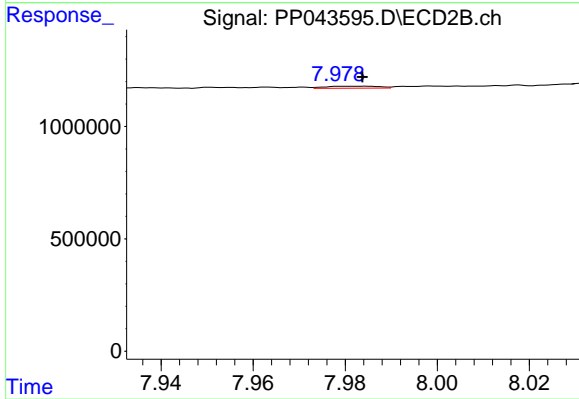
#43 AR-1268-3

R.T.: 7.670 min
 Delta R.T.: 0.005 min
 Response: 87484
 Conc: 0.45 ng/ml



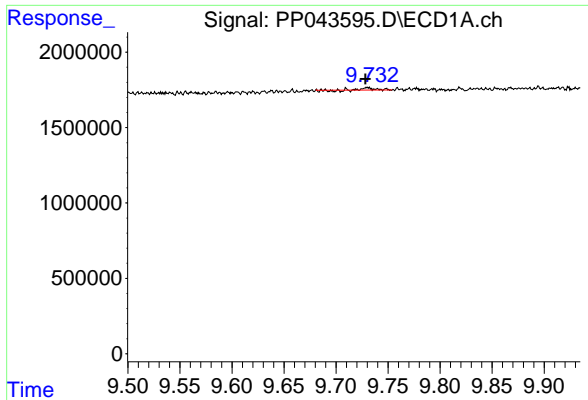
#44 AR-1268-4

R.T.: 0.000 min
 Exp R.T. : 9.302 min
 Response: 0
 Conc: N.D.



#44 AR-1268-4

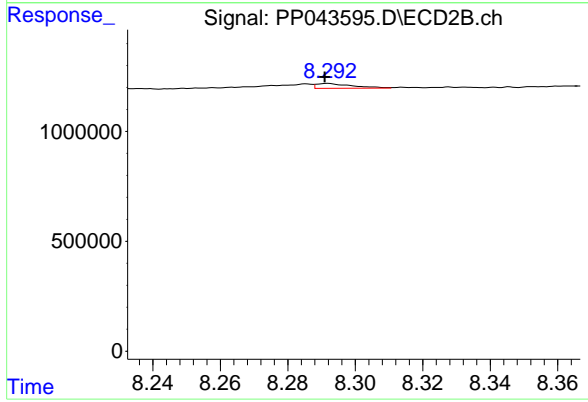
R.T.: 7.985 min
 Delta R.T.: 0.000 min
 Response: 69404
 Conc: 0.77 ng/ml



#45 AR-1268-5

R.T.: 9.731 min
 Delta R.T.: 0.002 min
 Response: 86731
 Conc: 0.19 ng/ml

Instrument :
 ECD_P
 ClientSampleId :
 I.BLK



#45 AR-1268-5

R.T.: 8.292 min
 Delta R.T.: 0.001 min
 Response: 165337
 Conc: 0.28 ng/ml