

Data Path : Z:\pestpcbsrv\HPCHEM1\ECD_P\Data\PP021122\
 Data File : PP043602.D
 Signal(s) : Signal #1: ECD1A.ch Signal #2: ECD2B.ch
 Acq On : 11 Feb 2022 13:42
 Operator : YP\AJ
 Sample : N1470-01MSD
 Misc :
 ALS Vial : 14 Sample Multiplier: 1

Instrument :
 ECD_P
 ClientSampleId :
 CTY2-WC-ROLLOFFMSD

Integration File signal 1: autoint1.e
 Integration File signal 2: autoint2.e
 Quant Time: Feb 12 04:42:09 2022
 Quant Method : Z:\pestpcbsrv\HPCHEM1\ECD_P\methods\PP021022.M
 Quant Title : GC EXTRACTABLES
 QLast Update : Fri Feb 11 04:48:05 2022
 Response via : Initial Calibration
 Integrator: ChemStation

Volume Inj. : 2 µl
 Signal #1 Phase : ZB-MR1 Signal #2 Phase: ZB-MR2
 Signal #1 Info : 30Mx0.32mmx 0.50µ Signal #2 Info : 30M x 0.32mm x 0.25µm

Compound	RT#1	RT#2	Resp#1	Resp#2	ng/ml	ng/ml

System Monitoring Compounds						
1) SA Tetrachlo...	3.919	3.174	44761576	37280741	20.244	19.848
2) SA Decachlor...	10.071	8.554	22226870	28801624	18.711	17.753
Target Compounds						
3) L1 AR-1016-1	5.174	4.322	30128097	24880185	415.203	406.079
4) L1 AR-1016-2	5.197	4.343	44596903	56716187	422.837	671.285 #
5) L1 AR-1016-3	5.263	4.526	28649476	24207673	435.104	518.178
6) L1 AR-1016-4	5.368	4.576	27427098	16165311	505.753	432.564
7) L1 AR-1016-5	5.691	4.801	25750427	26272315	490.224	575.105
8) L2 AR-1221-1	4.139	3.401	5090636	3384012	199.952	141.867 #
9) L2 AR-1221-2	4.238	3.492	4505398	4400670	234.676	243.669
10) L2 AR-1221-3	4.318	3.571	17946656	16601851	312.410	321.818
11) L3 AR-1232-1	4.318	3.571	17946656	16601851	369.791	385.864
12) L3 AR-1232-2	4.884	4.343	24357386	56716187	1027.861	1588.785 #
13) L3 AR-1232-3	5.197	4.526	44596903	24207673	1035.844	1237.981
14) L3 AR-1232-4	5.368	4.619	27427098	22715547	1256.493	1313.617
15) L3 AR-1232-5	5.472	4.801	18087619	26272315	1121.420	1398.641
16) L4 AR-1242-1	5.174	4.322	30128097	24880185	536.165	510.385
17) L4 AR-1242-2	5.197	4.343	44596903	56716187	539.040	842.299 #
18) L4 AR-1242-3	5.263	4.526	28649476	24207673	553.507	644.876
19) L4 AR-1242-4	5.368	4.619	27427098	22715547	642.133	629.074
20) L4 AR-1242-5	6.176	5.182	4786845	47750761	110.853	1109.246 #
21) L5 AR-1248-1	5.174	4.322	30128097	24880185	734.875	667.920
22) L5 AR-1248-2	5.472	4.576	18087619	16165311	318.372	330.435
23) L5 AR-1248-3	5.691	4.619	25750427	22715547	385.969	442.667
24) L5 AR-1248-4	6.150f	4.801	13264279	26272315	189.851	448.134 #
25) L5 AR-1248-5	6.176	5.224	4786845	9386621	69.243	163.822 #
26) L6 AR-1254-1	6.106	5.182	49225384	47750761	651.504	546.769
27) L6 AR-1254-2	6.344	5.338	42484019	22439544	378.752	294.184
28) L6 AR-1254-3	6.742	5.789f	19723330	27771478	170.451	226.598 #
29) L6 AR-1254-4	7.053	6.024	8068712	6181125	101.069	78.316
30) L6 AR-1254-5	7.515	6.473	50974401	56437126	594.363	488.022
31) L7 AR-1260-1	6.921	5.912	36580731	37108617	436.826	464.032
32) L7 AR-1260-2	7.203	6.119	56281856	47490294	621.757	486.317
33) L7 AR-1260-3	7.601	6.282	26215633	41458207	361.652	454.131 #
34) L7 AR-1260-4	7.849	6.796	32243138	32345253	375.548	399.768
35) L7 AR-1260-5	8.192	7.063	57012190	70998327	367.803	384.055
36) L8 AR-1262-1	7.601	6.515	26215633	33413388	265.503	303.943
37) L8 AR-1262-2	8.192	6.796	57012190	32345253	353.145	317.098
38) L8 AR-1262-3	8.537	7.371	36293487	15240513	331.753	178.828 #
39) L8 AR-1262-4	8.617	7.439	6949432	53368795	144.911	343.619 #
40) L8 AR-1262-5	9.301	7.982	13401842	18424041	240.656	236.831
41) L9 AR-1268-1	8.537	7.371	36293487	15240513	186.183	60.153 #

Data Path : Z:\pestpcbsrv\HPCHEM1\ECD_P\Data\PP021122\
 Data File : PP043602.D
 Signal(s) : Signal #1: ECD1A.ch Signal #2: ECD2B.ch
 Acq On : 11 Feb 2022 13:42
 Operator : YP\AJ
 Sample : N1470-01MSD
 Misc :
 ALS Vial : 14 Sample Multiplier: 1

Instrument :
 ECD_P
 ClientSampleId :
 CTY2-WC-ROLLOFFMSD

Integration File signal 1: autoint1.e
 Integration File signal 2: autoint2.e
 Quant Time: Feb 12 04:42:09 2022
 Quant Method : Z:\pestpcbsrv\HPCHEM1\ECD_P\methods\PP021022.M
 Quant Title : GC EXTRACTABLES
 QLast Update : Fri Feb 11 04:48:05 2022
 Response via : Initial Calibration
 Integrator: ChemStation

Volume Inj. : 2 µl
 Signal #1 Phase : ZB-MR1 Signal #2 Phase: ZB-MR2
 Signal #1 Info : 30Mx0.32mmx 0.50µ Signal #2 Info : 30M x 0.32mm x 0.25µm

	Compound	RT#1	RT#2	Resp#1	Resp#2	ng/ml	ng/ml
42)	L9 AR-1268-2	8.617	7.439	6949432	53368795	39.702	236.184 #
43)	L9 AR-1268-3	8.858	7.664	843209	1388219	5.462	7.129 #
44)	L9 AR-1268-4	9.301	7.982	13401842	18424041	214.189	204.879
45)	L9 AR-1268-5	9.728	8.290	4866562	6473365	10.709	10.773

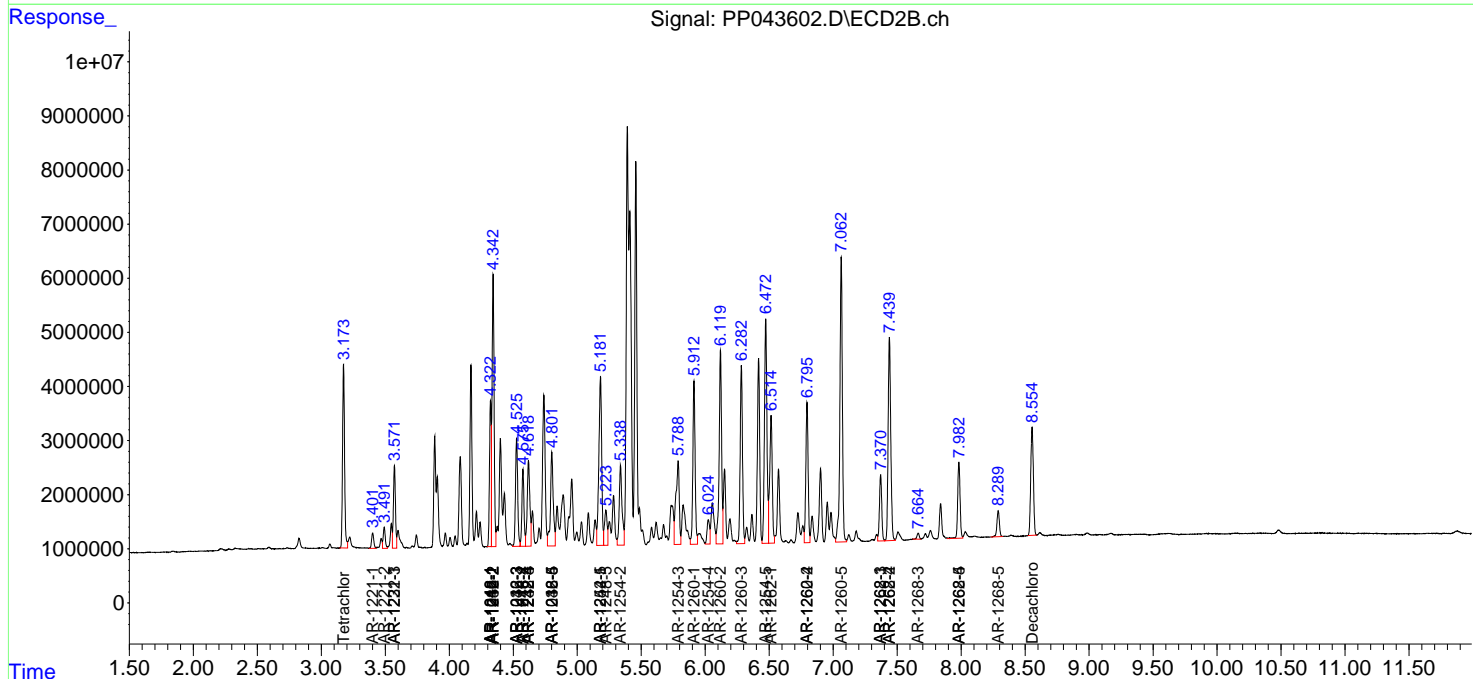
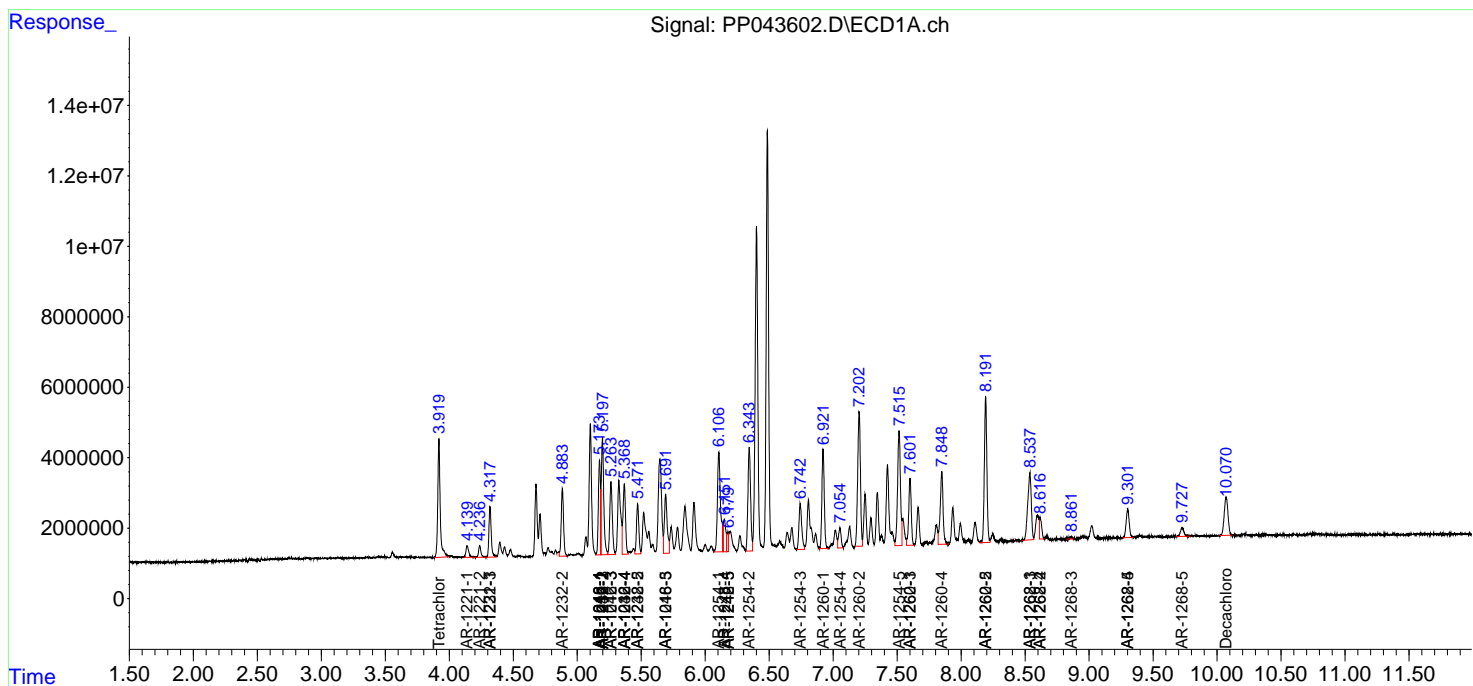
(f)=RT Delta > 1/2 Window (#)=Amounts differ by > 25% (m)=manual int.

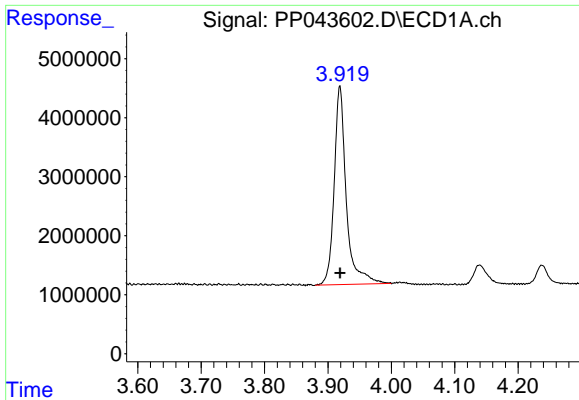
Data Path : Z:\pestpcbsrv\HPCHEM1\ECD_P\Data\PP021122\
 Data File : PP043602.D
 Signal(s) : Signal #1: ECD1A.ch Signal #2: ECD2B.ch
 Acq On : 11 Feb 2022 13:42
 Operator : YP\AJ
 Sample : N1470-01MSD
 Misc :
 ALS Vial : 14 Sample Multiplier: 1

Instrument :
 ECD_P
 ClientSampleId :
 CTY2-WC-ROLLOFFMSD

Integration File signal 1: autoint1.e
 Integration File signal 2: autoint2.e
 Quant Time: Feb 12 04:42:09 2022
 Quant Method : Z:\pestpcbsrv\HPCHEM1\ECD_P\methods\PP021022.M
 Quant Title : GC EXTRACTABLES
 QLast Update : Fri Feb 11 04:48:05 2022
 Response via : Initial Calibration
 Integrator: ChemStation

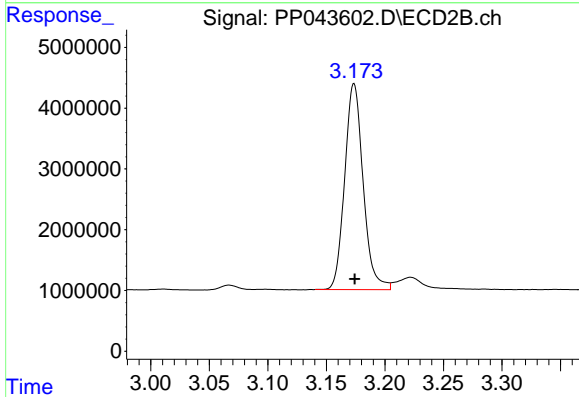
Volume Inj. : 2 µl
 Signal #1 Phase : ZB-MR1 Signal #2 Phase: ZB-MR2
 Signal #1 Info : 30Mx0.32mmx 0.50µ Signal #2 Info : 30M x 0.32mm x 0.25µm



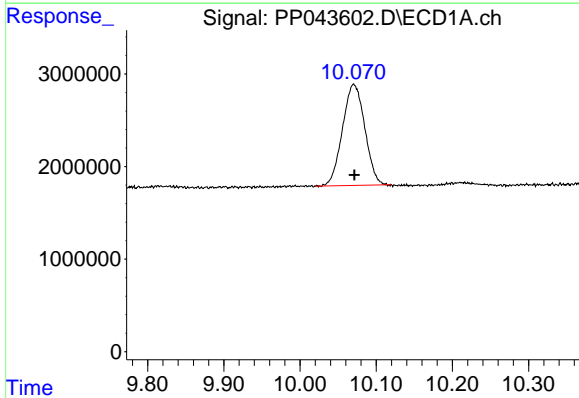


#1 Tetrachloro-m-xylene
 R.T.: 3.919 min
 Delta R.T.: 0.000 min
 Response: 44761576
 Conc: 20.24 ng/ml

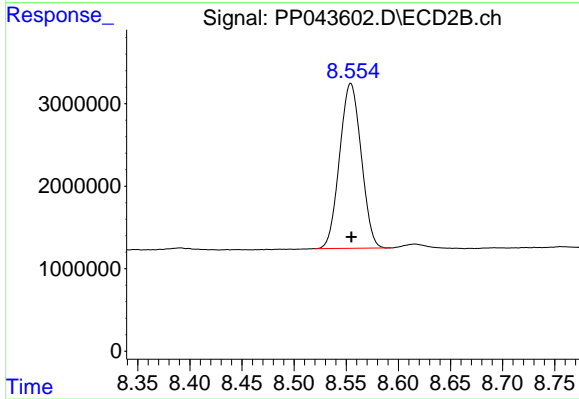
Instrument :
 ECD_P
 ClientSampleId :
 CTY2-WC-ROLLOFFMSD



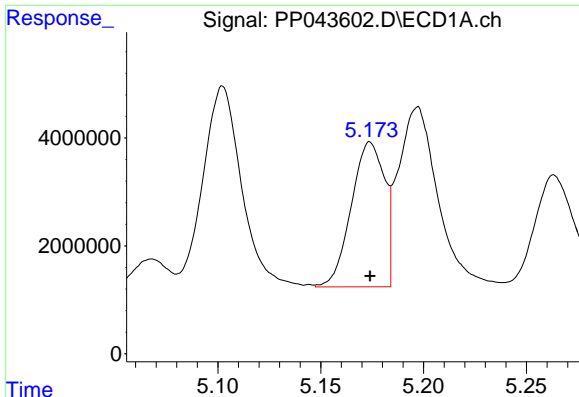
#1 Tetrachloro-m-xylene
 R.T.: 3.174 min
 Delta R.T.: 0.000 min
 Response: 37280741
 Conc: 19.85 ng/ml



#2 Decachlorobiphenyl
 R.T.: 10.071 min
 Delta R.T.: 0.000 min
 Response: 22226870
 Conc: 18.71 ng/ml



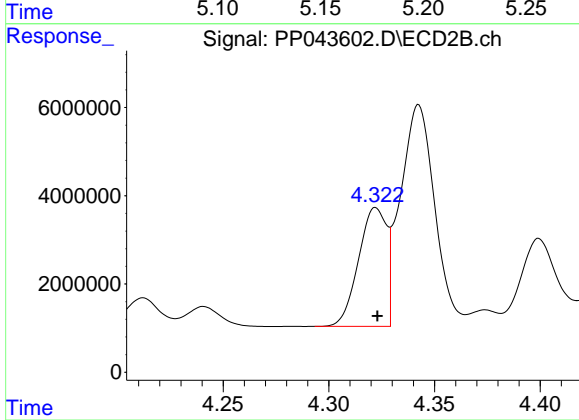
#2 Decachlorobiphenyl
 R.T.: 8.554 min
 Delta R.T.: 0.000 min
 Response: 28801624
 Conc: 17.75 ng/ml



#3 AR-1016-1

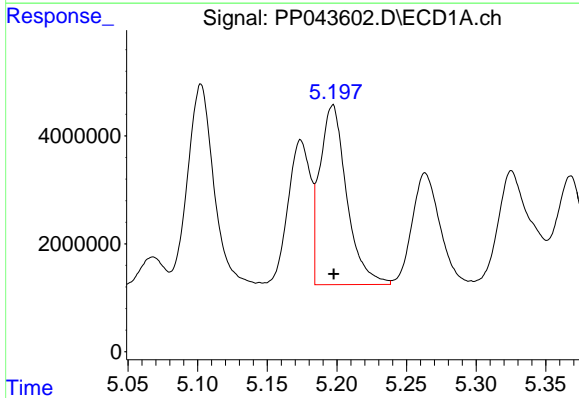
R.T.: 5.174 min
 Delta R.T.: 0.000 min
 Response: 30128097
 Conc: 415.20 ng/ml

Instrument :
 ECD_P
 ClientSampleId :
 CTY2-WC-ROLLOFFMSD



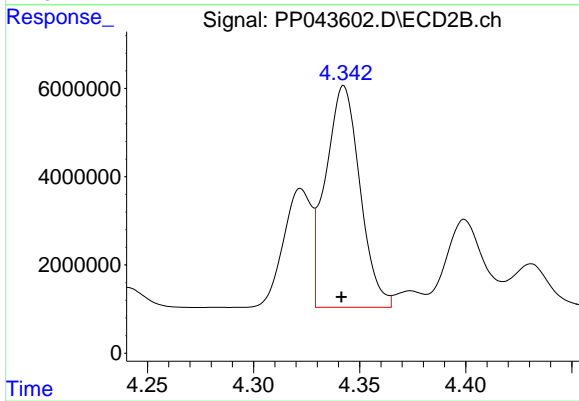
#3 AR-1016-1

R.T.: 4.322 min
 Delta R.T.: 0.000 min
 Response: 24880185
 Conc: 406.08 ng/ml



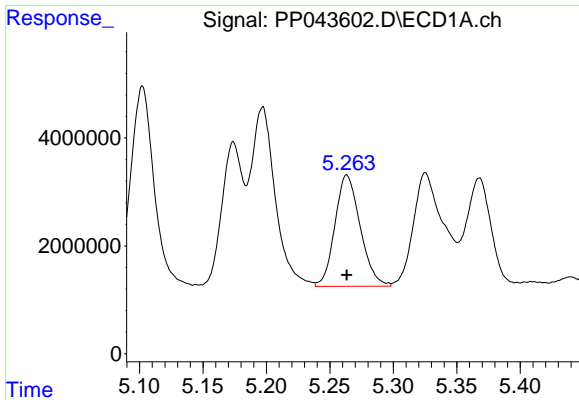
#4 AR-1016-2

R.T.: 5.197 min
 Delta R.T.: 0.000 min
 Response: 44596903
 Conc: 422.84 ng/ml



#4 AR-1016-2

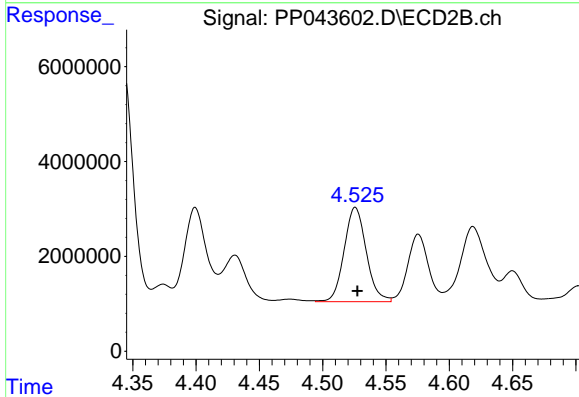
R.T.: 4.343 min
 Delta R.T.: 0.001 min
 Response: 56716187
 Conc: 671.29 ng/ml



#5 AR-1016-3

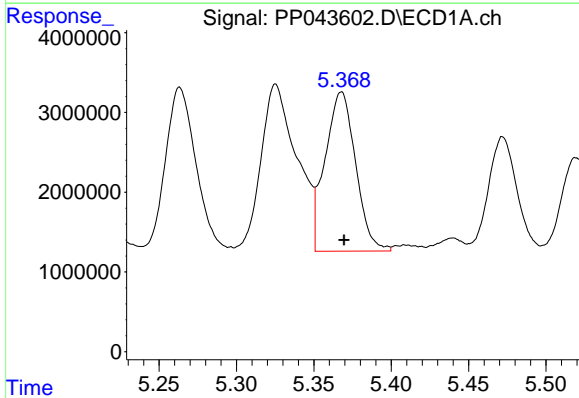
R.T.: 5.263 min
 Delta R.T.: 0.000 min
 Response: 28649476
 Conc: 435.10 ng/ml

Instrument :
 ECD_P
 ClientSampleId :
 CTY2-WC-ROLLOFFMSD



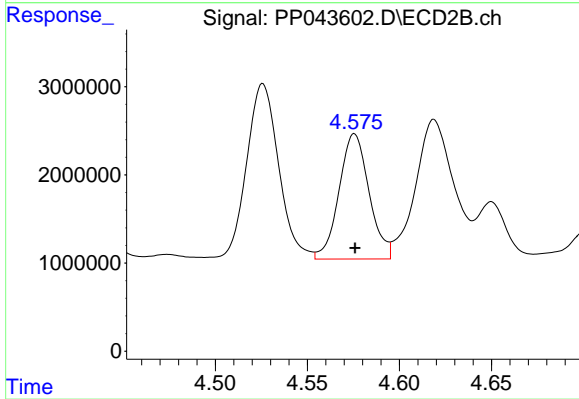
#5 AR-1016-3

R.T.: 4.526 min
 Delta R.T.: -0.002 min
 Response: 24207673
 Conc: 518.18 ng/ml



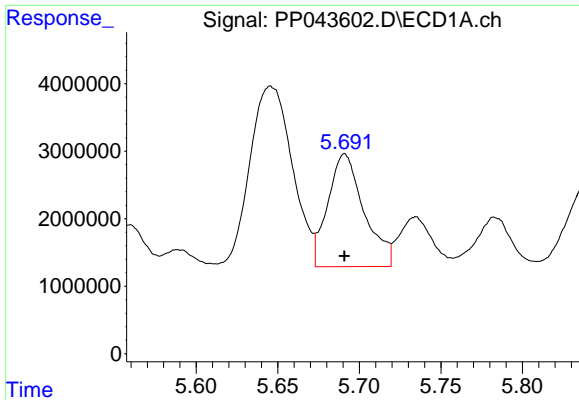
#6 AR-1016-4

R.T.: 5.368 min
 Delta R.T.: -0.002 min
 Response: 27427098
 Conc: 505.75 ng/ml



#6 AR-1016-4

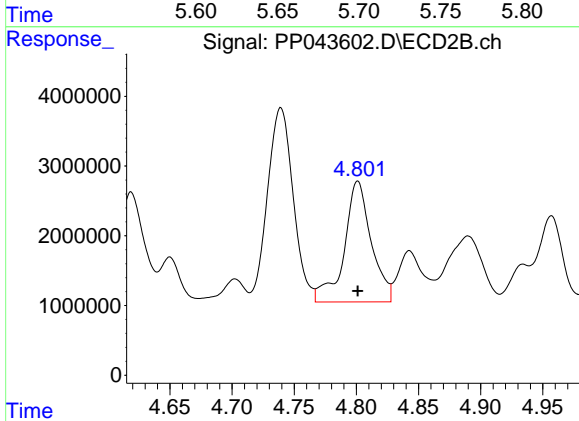
R.T.: 4.576 min
 Delta R.T.: 0.000 min
 Response: 16165311
 Conc: 432.56 ng/ml



#7 AR-1016-5

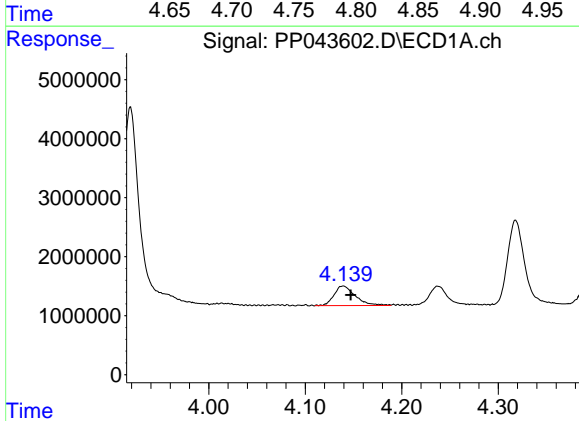
R.T.: 5.691 min
 Delta R.T.: 0.000 min
 Response: 25750427
 Conc: 490.22 ng/ml

Instrument :
 ECD_P
 ClientSampleId :
 CTY2-WC-ROLLOFFMSD



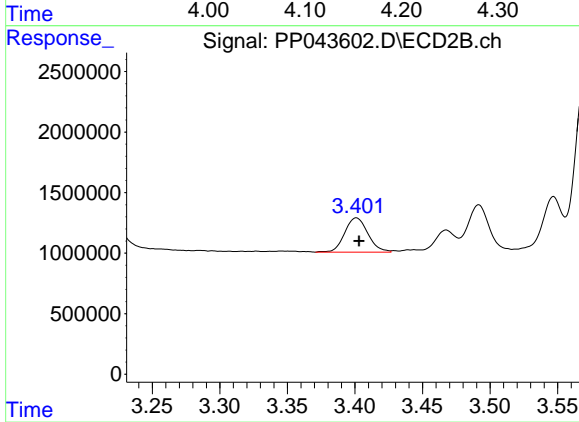
#7 AR-1016-5

R.T.: 4.801 min
 Delta R.T.: 0.000 min
 Response: 26272315
 Conc: 575.11 ng/ml



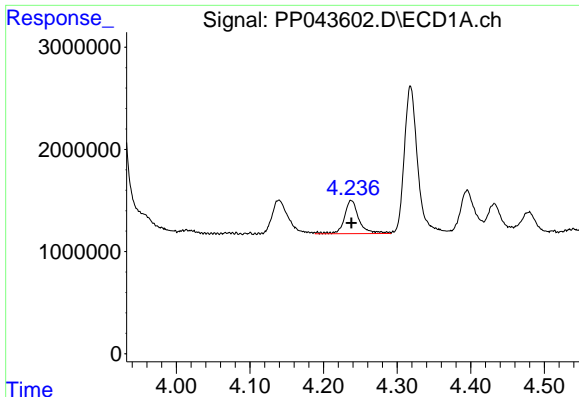
#8 AR-1221-1

R.T.: 4.139 min
 Delta R.T.: -0.008 min
 Response: 5090636
 Conc: 199.95 ng/ml



#8 AR-1221-1

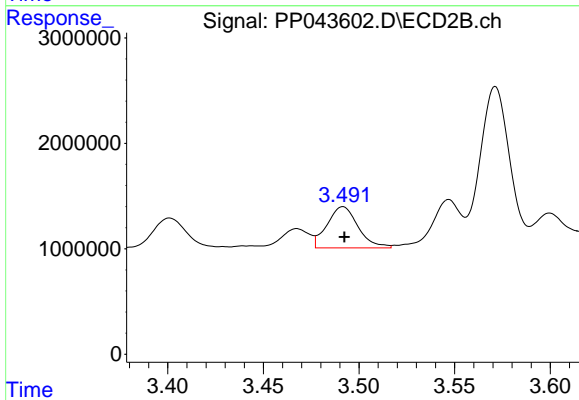
R.T.: 3.401 min
 Delta R.T.: -0.002 min
 Response: 3384012
 Conc: 141.87 ng/ml



#9 AR-1221-2

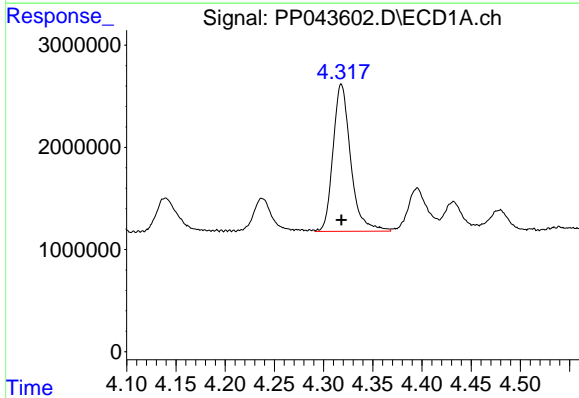
R.T.: 4.238 min
 Delta R.T.: 0.000 min
 Response: 4505398
 Conc: 234.68 ng/ml

Instrument :
 ECD_P
 ClientSampleId :
 CTY2-WC-ROLLOFFMSD



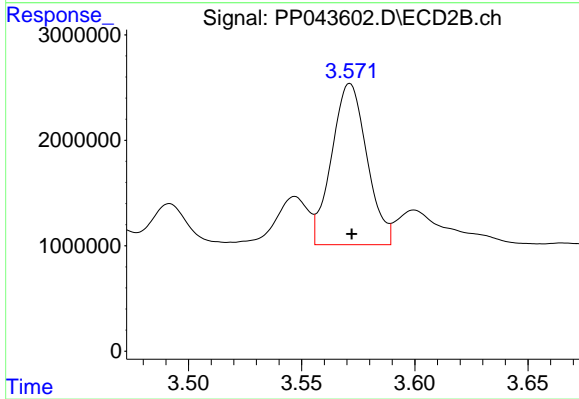
#9 AR-1221-2

R.T.: 3.492 min
 Delta R.T.: 0.000 min
 Response: 4400670
 Conc: 243.67 ng/ml



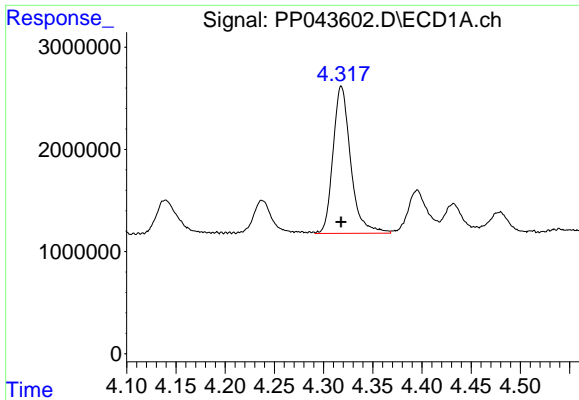
#10 AR-1221-3

R.T.: 4.318 min
 Delta R.T.: 0.000 min
 Response: 17946656
 Conc: 312.41 ng/ml



#10 AR-1221-3

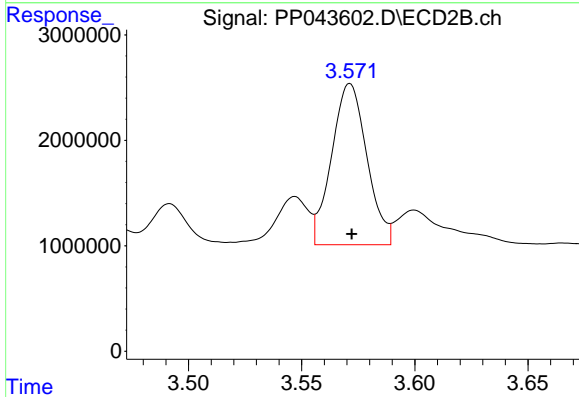
R.T.: 3.571 min
 Delta R.T.: 0.000 min
 Response: 16601851
 Conc: 321.82 ng/ml



#11 AR-1232-1

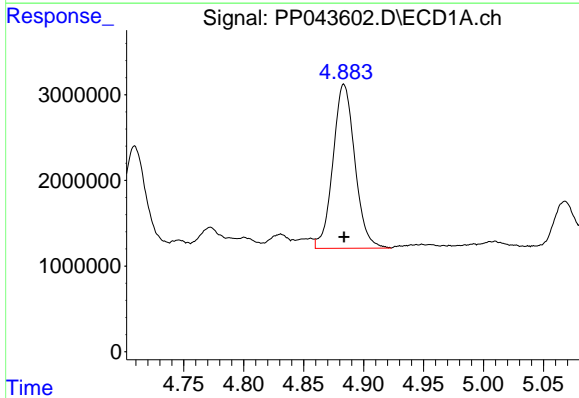
R.T.: 4.318 min
 Delta R.T.: 0.000 min
 Response: 17946656
 Conc: 369.79 ng/ml

Instrument :
 ECD_P
 ClientSampleId :
 CTY2-WC-ROLLOFFMSD



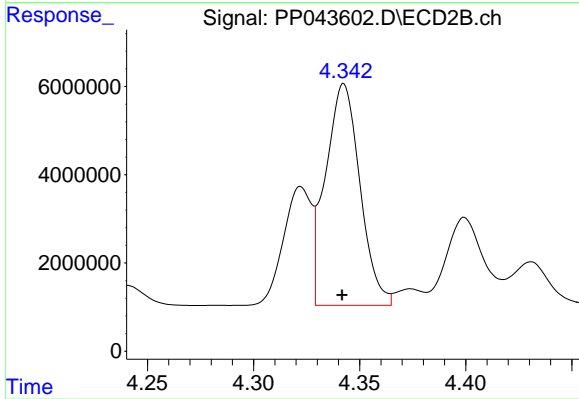
#11 AR-1232-1

R.T.: 3.571 min
 Delta R.T.: 0.000 min
 Response: 16601851
 Conc: 385.86 ng/ml



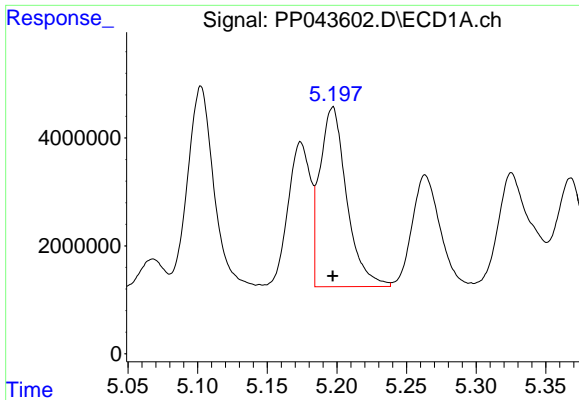
#12 AR-1232-2

R.T.: 4.884 min
 Delta R.T.: 0.000 min
 Response: 24357386
 Conc: 1027.86 ng/ml



#12 AR-1232-2

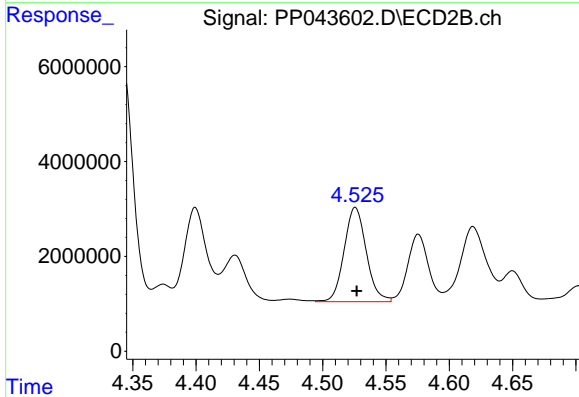
R.T.: 4.343 min
 Delta R.T.: 0.000 min
 Response: 56716187
 Conc: 1588.78 ng/ml



#13 AR-1232-3

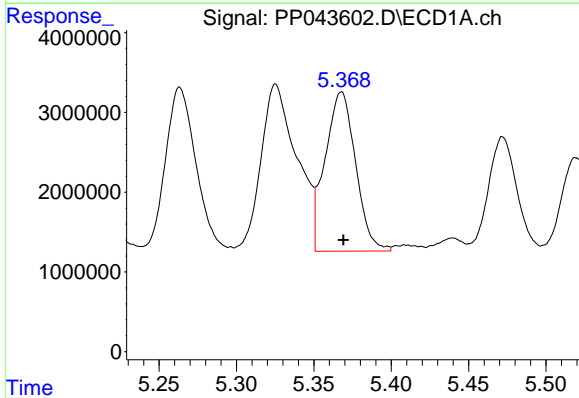
R.T.: 5.197 min
 Delta R.T.: 0.000 min
 Response: 44596903
 Conc: 1035.84 ng/ml

Instrument :
 ECD_P
 ClientSampleId :
 CTY2-WC-ROLLOFFMSD



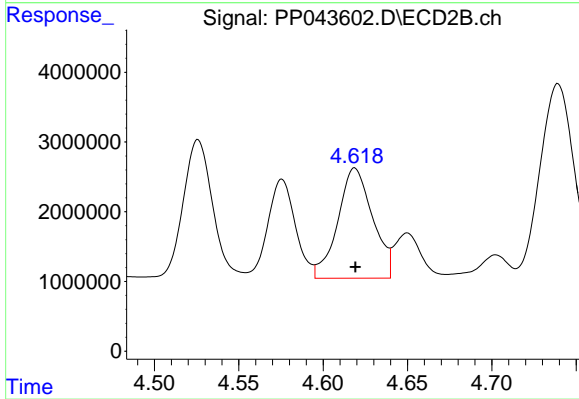
#13 AR-1232-3

R.T.: 4.526 min
 Delta R.T.: -0.001 min
 Response: 24207673
 Conc: 1237.98 ng/ml



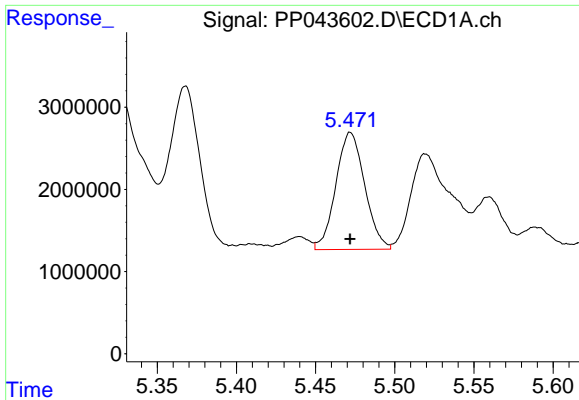
#14 AR-1232-4

R.T.: 5.368 min
 Delta R.T.: -0.001 min
 Response: 27427098
 Conc: 1256.49 ng/ml



#14 AR-1232-4

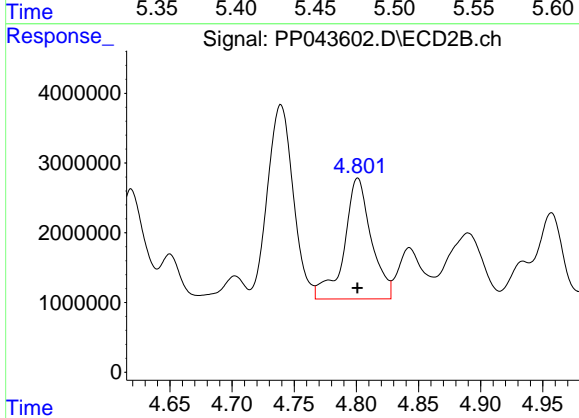
R.T.: 4.619 min
 Delta R.T.: 0.000 min
 Response: 22715547
 Conc: 1313.62 ng/ml



#15 AR-1232-5

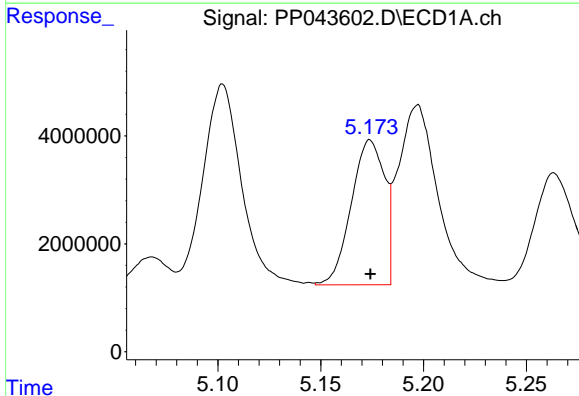
R.T.: 5.472 min
 Delta R.T.: 0.000 min
 Response: 18087619
 Conc: 1121.42 ng/ml

Instrument :
 ECD_P
 ClientSampleId :
 CTY2-WC-ROLLOFFMSD



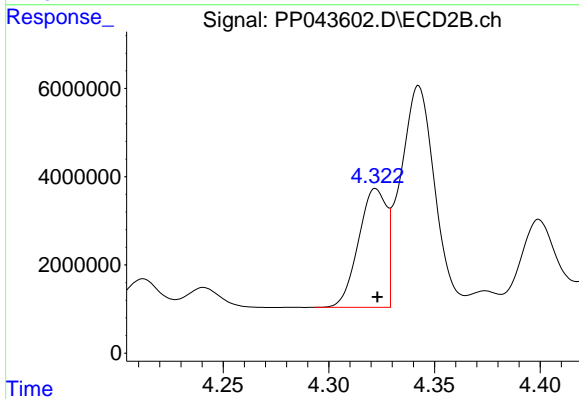
#15 AR-1232-5

R.T.: 4.801 min
 Delta R.T.: 0.000 min
 Response: 26272315
 Conc: 1398.64 ng/ml



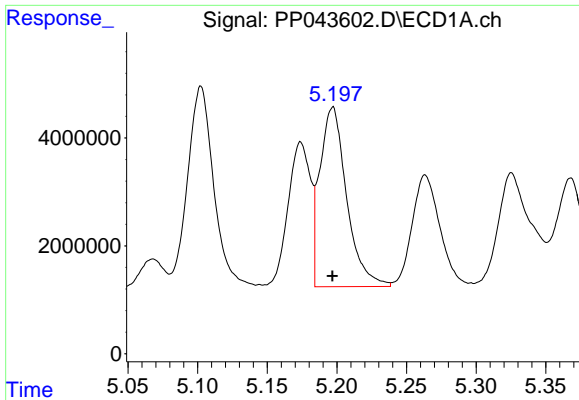
#16 AR-1242-1

R.T.: 5.174 min
 Delta R.T.: 0.000 min
 Response: 30128097
 Conc: 536.17 ng/ml



#16 AR-1242-1

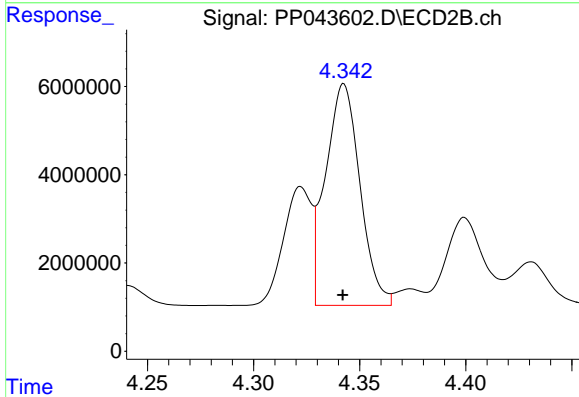
R.T.: 4.322 min
 Delta R.T.: 0.000 min
 Response: 24880185
 Conc: 510.38 ng/ml



#17 AR-1242-2

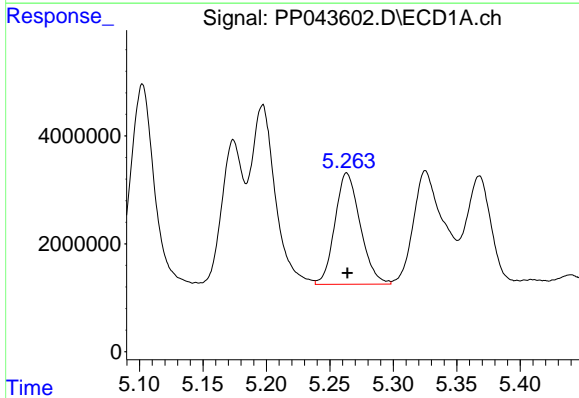
R.T.: 5.197 min
 Delta R.T.: 0.000 min
 Response: 44596903
 Conc: 539.04 ng/ml

Instrument :
 ECD_P
 ClientSampleId :
 CTY2-WC-ROLLOFFMSD



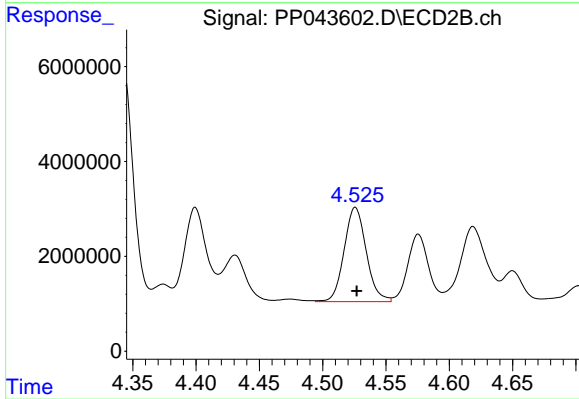
#17 AR-1242-2

R.T.: 4.343 min
 Delta R.T.: 0.000 min
 Response: 56716187
 Conc: 842.30 ng/ml



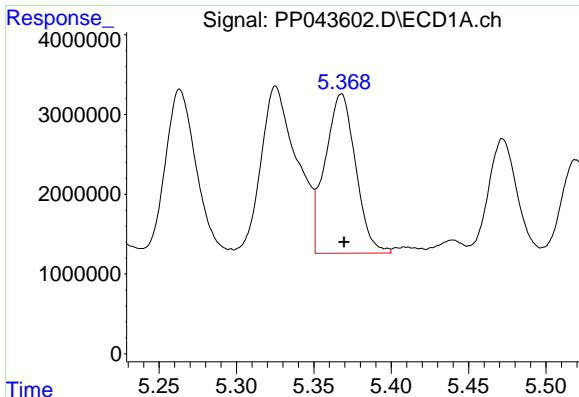
#18 AR-1242-3

R.T.: 5.263 min
 Delta R.T.: 0.000 min
 Response: 28649476
 Conc: 553.51 ng/ml



#18 AR-1242-3

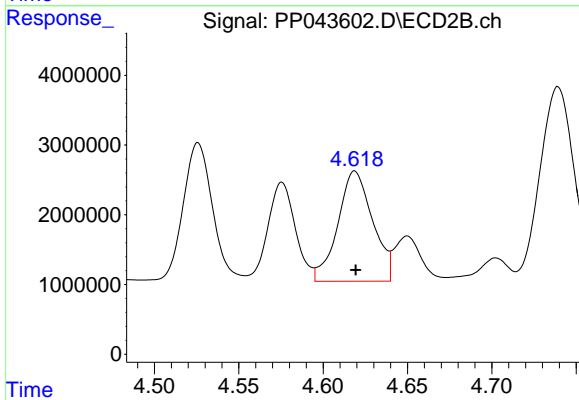
R.T.: 4.526 min
 Delta R.T.: -0.001 min
 Response: 24207673
 Conc: 644.88 ng/ml



#19 AR-1242-4

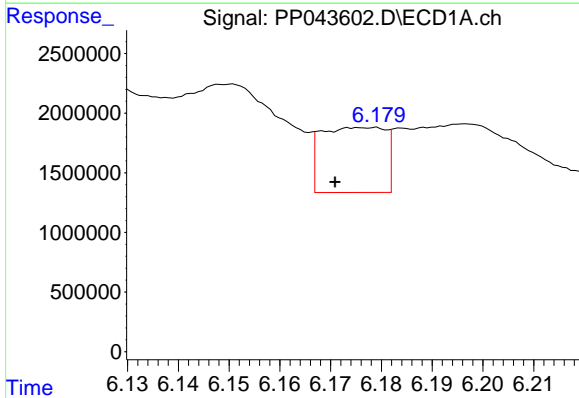
R.T.: 5.368 min
 Delta R.T.: -0.002 min
 Response: 27427098
 Conc: 642.13 ng/ml

Instrument :
 ECD_P
 ClientSampleId :
 CTY2-WC-ROLLOFFMSD



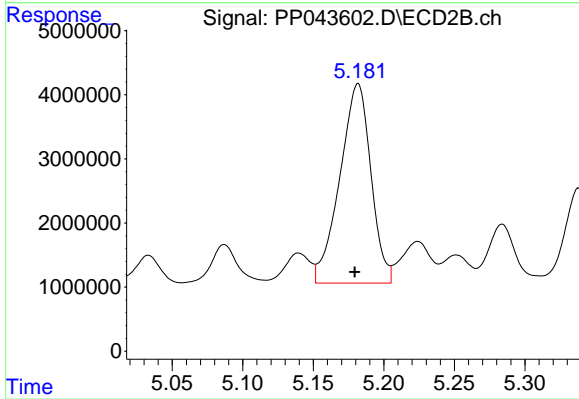
#19 AR-1242-4

R.T.: 4.619 min
 Delta R.T.: 0.000 min
 Response: 22715547
 Conc: 629.07 ng/ml



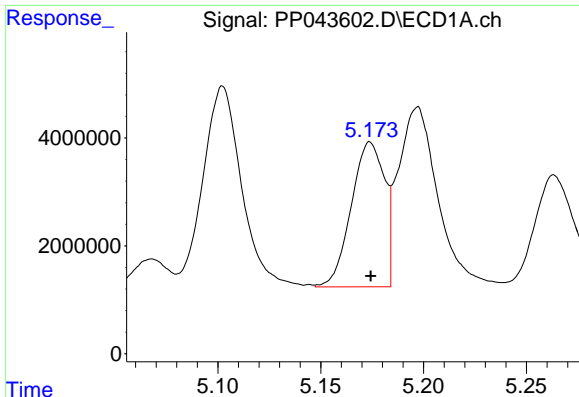
#20 AR-1242-5

R.T.: 6.176 min
 Delta R.T.: 0.005 min
 Response: 4786845
 Conc: 110.85 ng/ml



#20 AR-1242-5

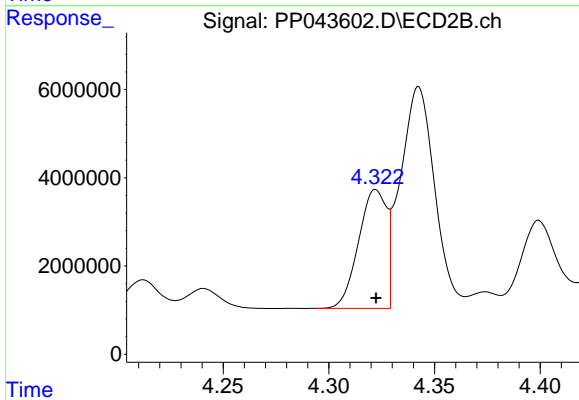
R.T.: 5.182 min
 Delta R.T.: 0.002 min
 Response: 47750761
 Conc: 1109.25 ng/ml



#21 AR-1248-1

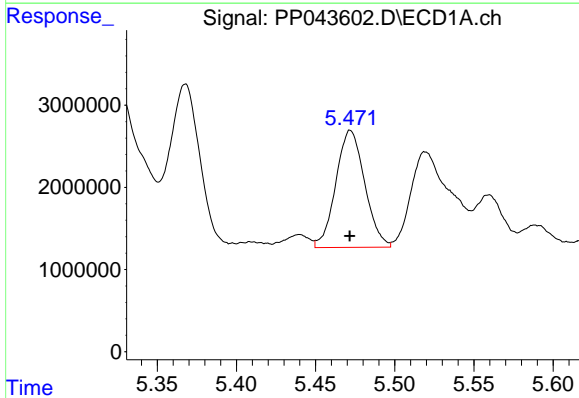
R.T.: 5.174 min
 Delta R.T.: 0.000 min
 Response: 30128097
 Conc: 734.87 ng/ml

Instrument :
 ECD_P
 ClientSampleId :
 CTY2-WC-ROLLOFFMSD



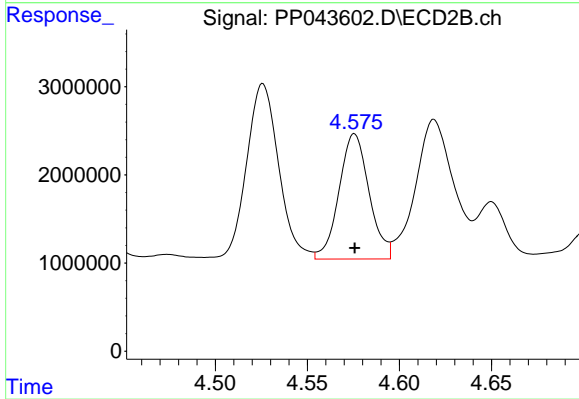
#21 AR-1248-1

R.T.: 4.322 min
 Delta R.T.: 0.000 min
 Response: 24880185
 Conc: 667.92 ng/ml



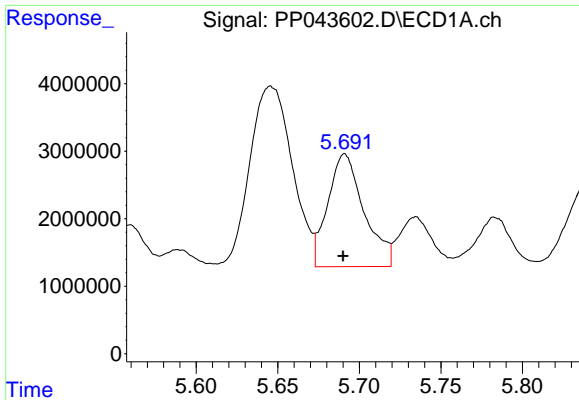
#22 AR-1248-2

R.T.: 5.472 min
 Delta R.T.: 0.000 min
 Response: 18087619
 Conc: 318.37 ng/ml



#22 AR-1248-2

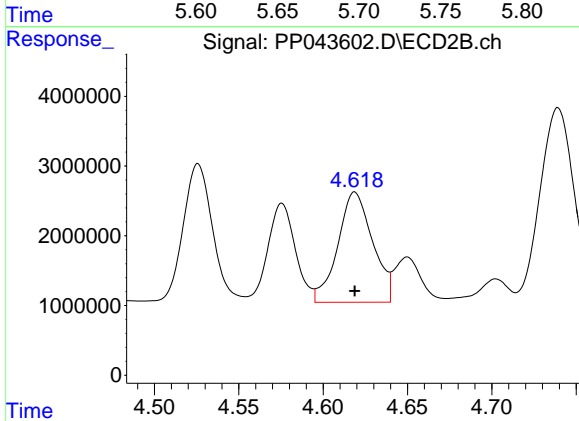
R.T.: 4.576 min
 Delta R.T.: 0.000 min
 Response: 16165311
 Conc: 330.43 ng/ml



#23 AR-1248-3

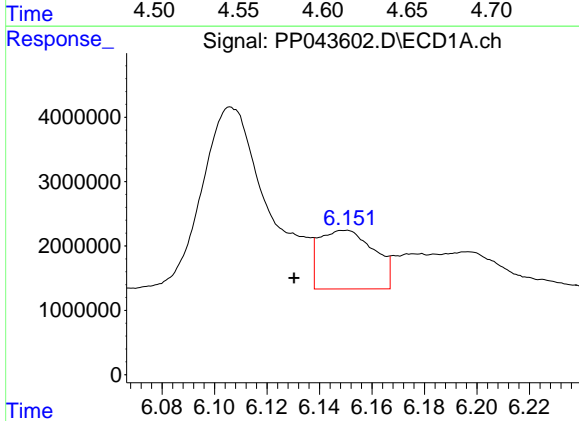
R.T.: 5.691 min
 Delta R.T.: 0.001 min
 Response: 25750427
 Conc: 385.97 ng/ml

Instrument :
 ECD_P
 ClientSampleId :
 CTY2-WC-ROLLOFFMSD



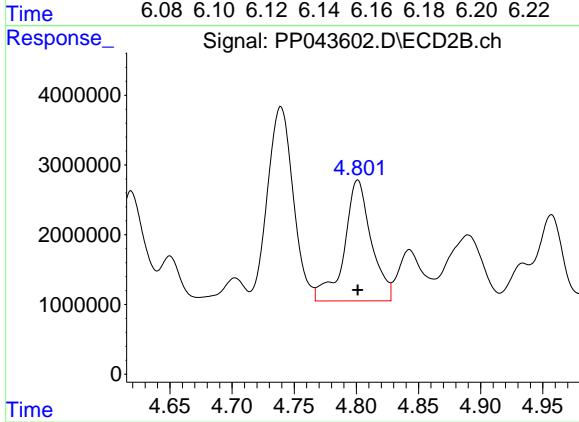
#23 AR-1248-3

R.T.: 4.619 min
 Delta R.T.: 0.000 min
 Response: 22715547
 Conc: 442.67 ng/ml



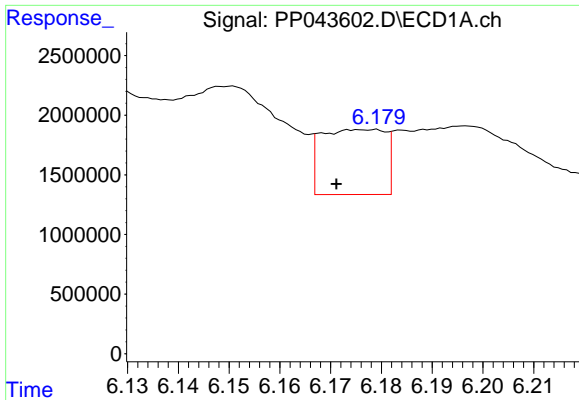
#24 AR-1248-4

R.T.: 6.150 min
 Delta R.T.: 0.019 min
 Response: 13264279
 Conc: 189.85 ng/ml



#24 AR-1248-4

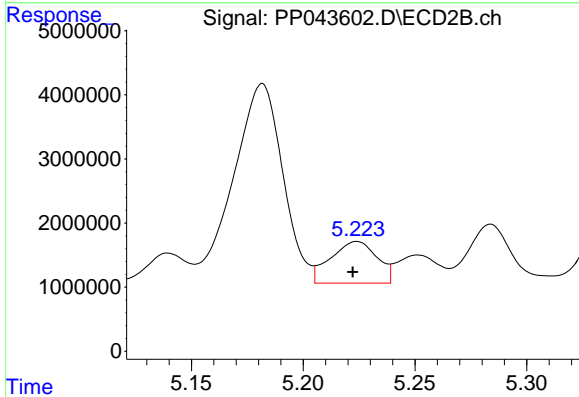
R.T.: 4.801 min
 Delta R.T.: 0.000 min
 Response: 26272315
 Conc: 448.13 ng/ml



#25 AR-1248-5

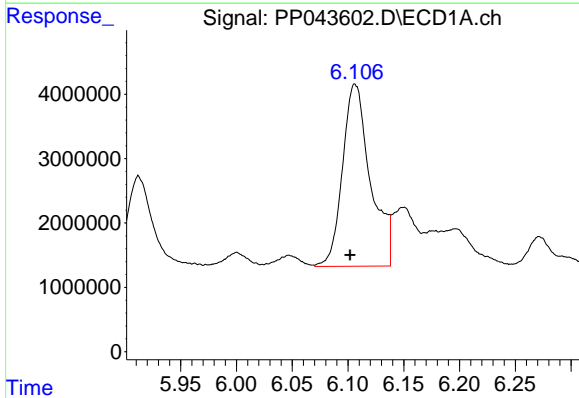
R.T.: 6.176 min
 Delta R.T.: 0.005 min
 Response: 4786845
 Conc: 69.24 ng/ml

Instrument :
 ECD_P
 ClientSampleId :
 CTY2-WC-ROLLOFFMSD



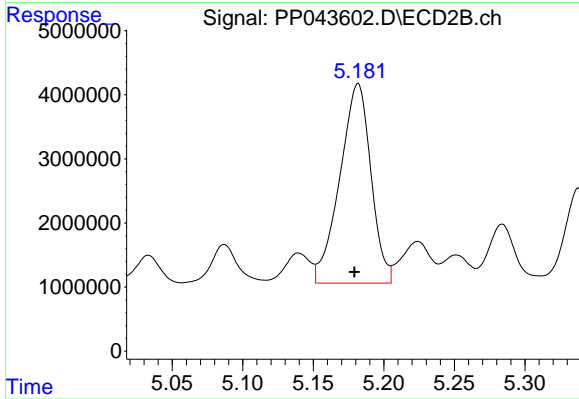
#25 AR-1248-5

R.T.: 5.224 min
 Delta R.T.: 0.002 min
 Response: 9386621
 Conc: 163.82 ng/ml



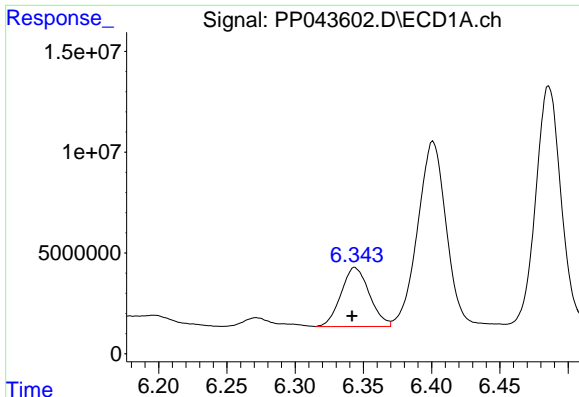
#26 AR-1254-1

R.T.: 6.106 min
 Delta R.T.: 0.005 min
 Response: 49225384
 Conc: 651.50 ng/ml



#26 AR-1254-1

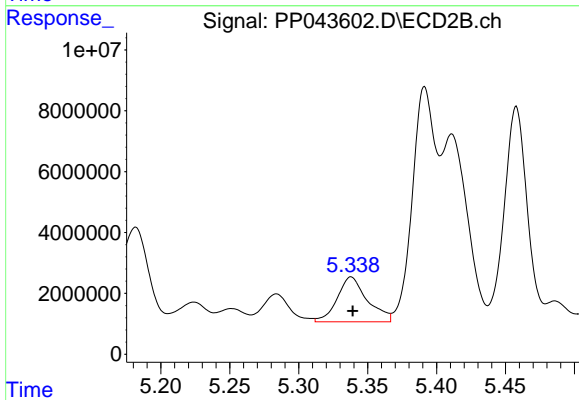
R.T.: 5.182 min
 Delta R.T.: 0.003 min
 Response: 47750761
 Conc: 546.77 ng/ml



#27 AR-1254-2

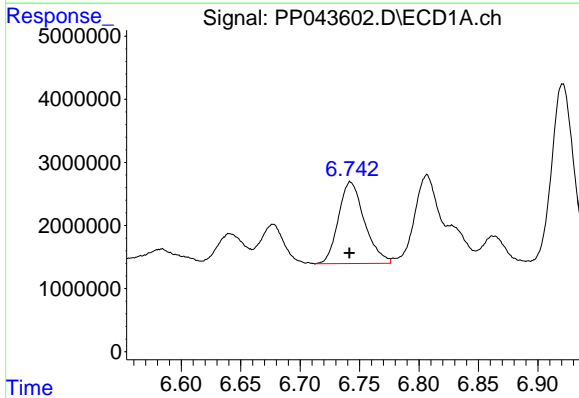
R.T.: 6.344 min
Delta R.T.: 0.002 min
Response: 42484019
Conc: 378.75 ng/ml

Instrument :
ECD_P
ClientSampleId :
CTY2-WC-ROLLOFFMSD



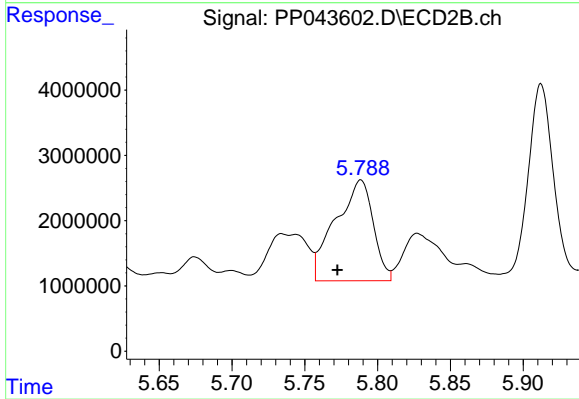
#27 AR-1254-2

R.T.: 5.338 min
Delta R.T.: -0.001 min
Response: 22439544
Conc: 294.18 ng/ml



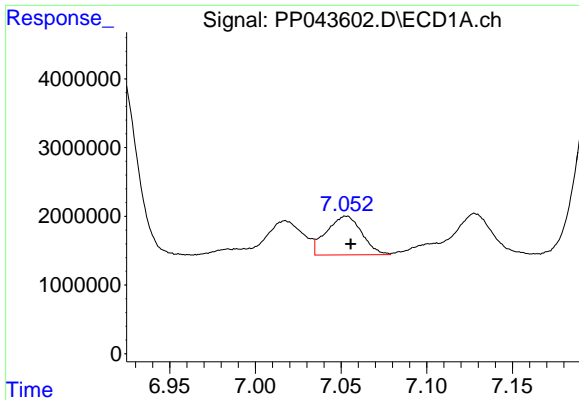
#28 AR-1254-3

R.T.: 6.742 min
Delta R.T.: 0.000 min
Response: 19723330
Conc: 170.45 ng/ml



#28 AR-1254-3

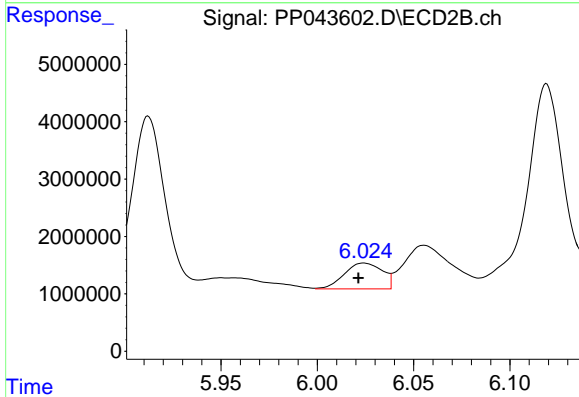
R.T.: 5.789 min
Delta R.T.: 0.016 min
Response: 27771478
Conc: 226.60 ng/ml



#29 AR-1254-4

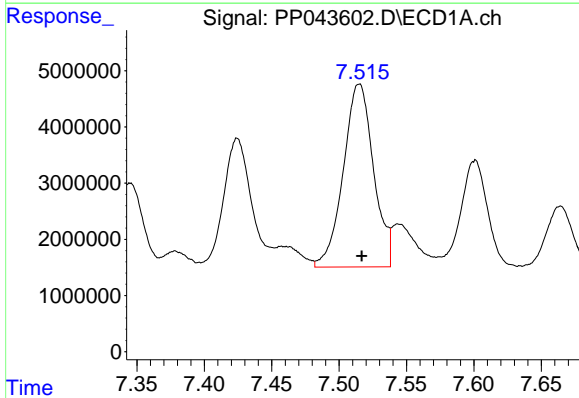
R.T.: 7.053 min
 Delta R.T.: -0.003 min
 Response: 8068712
 Conc: 101.07 ng/ml

Instrument :
 ECD_P
 ClientSampleId :
 CTY2-WC-ROLLOFFMSD



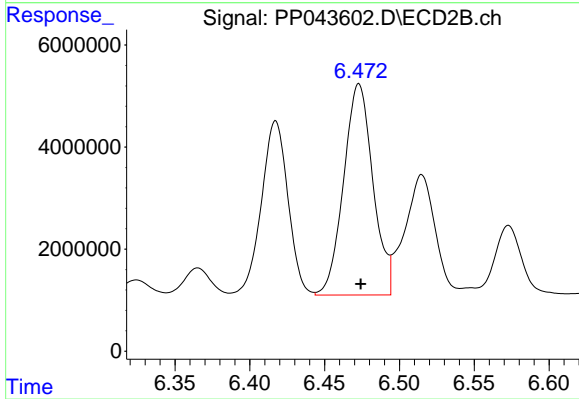
#29 AR-1254-4

R.T.: 6.024 min
 Delta R.T.: 0.003 min
 Response: 6181125
 Conc: 78.32 ng/ml



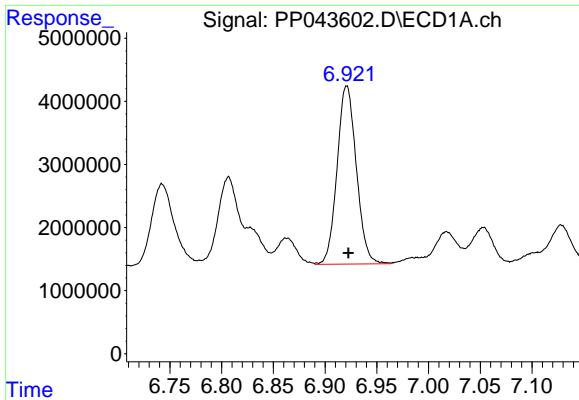
#30 AR-1254-5

R.T.: 7.515 min
 Delta R.T.: -0.002 min
 Response: 50974401
 Conc: 594.36 ng/ml



#30 AR-1254-5

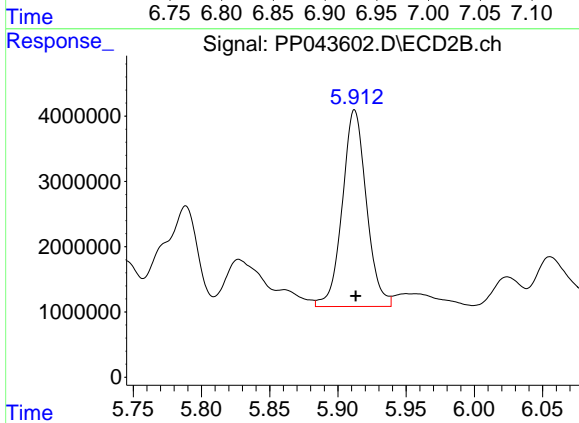
R.T.: 6.473 min
 Delta R.T.: -0.001 min
 Response: 56437126
 Conc: 488.02 ng/ml



#31 AR-1260-1

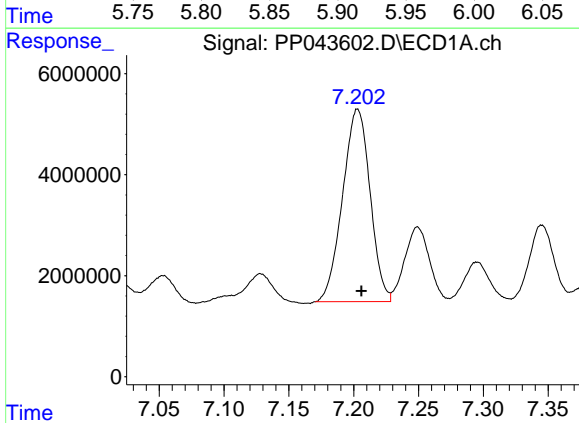
R.T.: 6.921 min
 Delta R.T.: -0.002 min
 Response: 36580731
 Conc: 436.83 ng/ml

Instrument :
 ECD_P
 ClientSampleId :
 CTY2-WC-ROLLOFFMSD



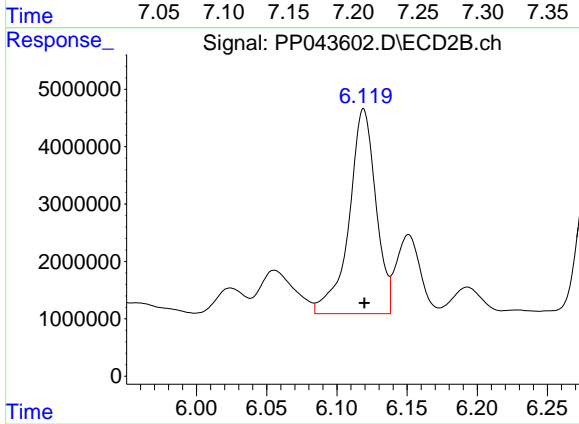
#31 AR-1260-1

R.T.: 5.912 min
 Delta R.T.: 0.000 min
 Response: 37108617
 Conc: 464.03 ng/ml



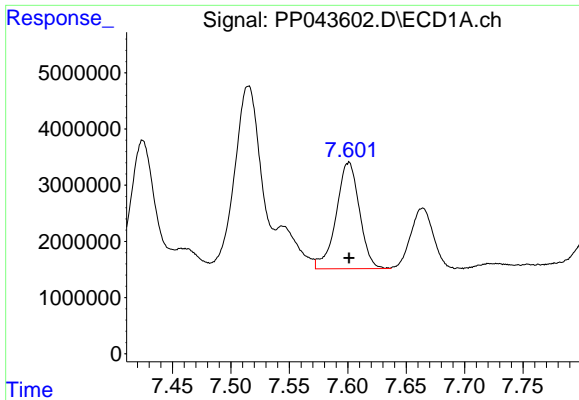
#32 AR-1260-2

R.T.: 7.203 min
 Delta R.T.: -0.003 min
 Response: 56281856
 Conc: 621.76 ng/ml



#32 AR-1260-2

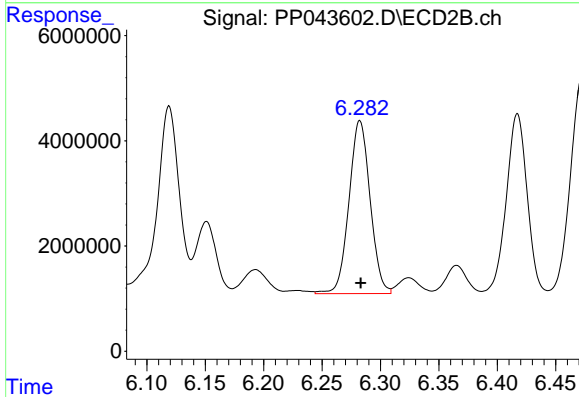
R.T.: 6.119 min
 Delta R.T.: 0.000 min
 Response: 47490294
 Conc: 486.32 ng/ml



#33 AR-1260-3

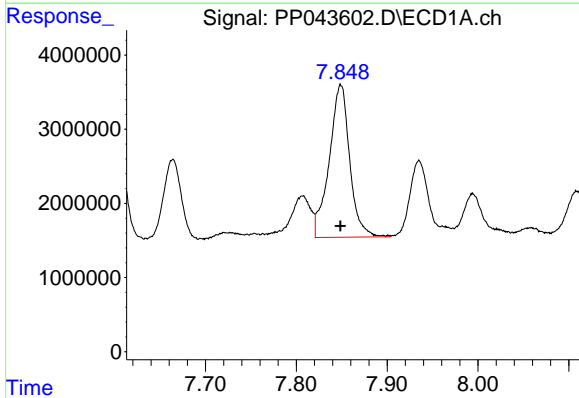
R.T.: 7.601 min
 Delta R.T.: 0.000 min
 Response: 26215633
 Conc: 361.65 ng/ml

Instrument :
 ECD_P
 ClientSampleId :
 CTY2-WC-ROLLOFFMSD



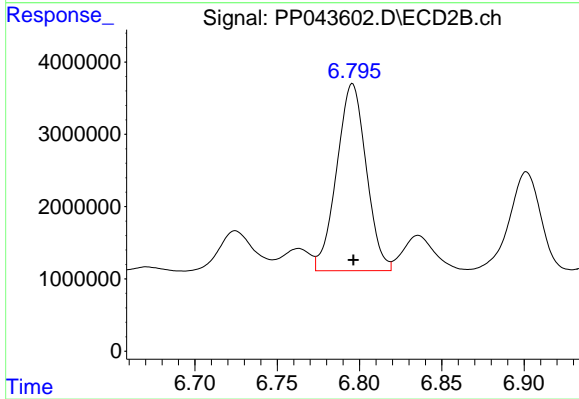
#33 AR-1260-3

R.T.: 6.282 min
 Delta R.T.: 0.000 min
 Response: 41458207
 Conc: 454.13 ng/ml



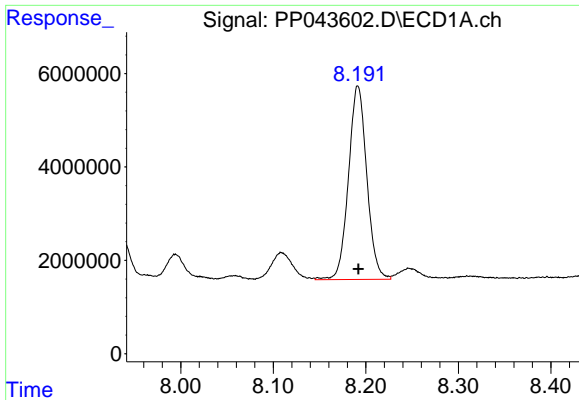
#34 AR-1260-4

R.T.: 7.849 min
 Delta R.T.: 0.000 min
 Response: 32243138
 Conc: 375.55 ng/ml



#34 AR-1260-4

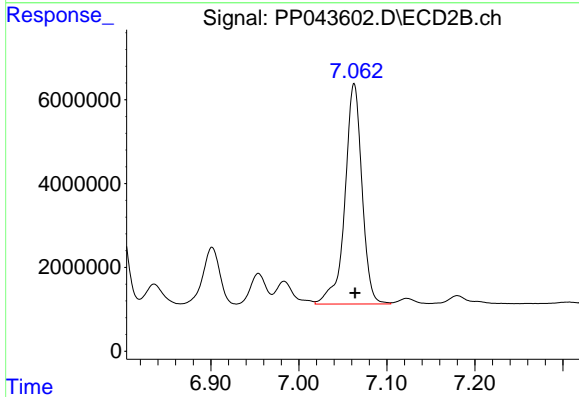
R.T.: 6.796 min
 Delta R.T.: 0.000 min
 Response: 32345253
 Conc: 399.77 ng/ml



#35 AR-1260-5

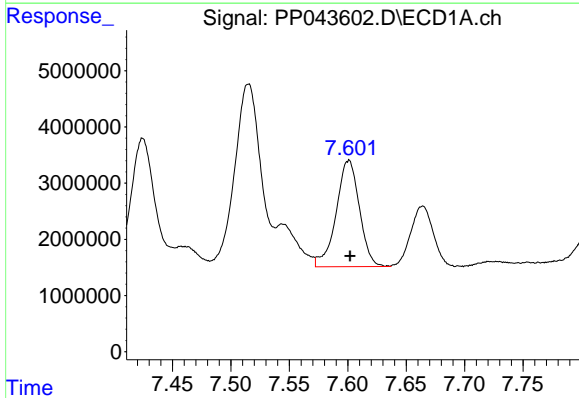
R.T.: 8.192 min
 Delta R.T.: 0.000 min
 Response: 57012190
 Conc: 367.80 ng/ml

Instrument :
 ECD_P
 ClientSampleId :
 CTY2-WC-ROLLOFFMSD



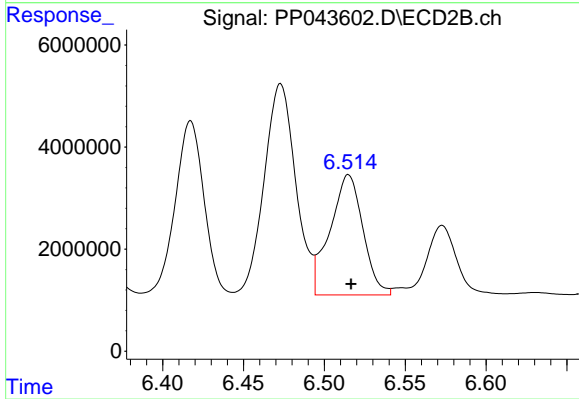
#35 AR-1260-5

R.T.: 7.063 min
 Delta R.T.: -0.001 min
 Response: 70998327
 Conc: 384.05 ng/ml



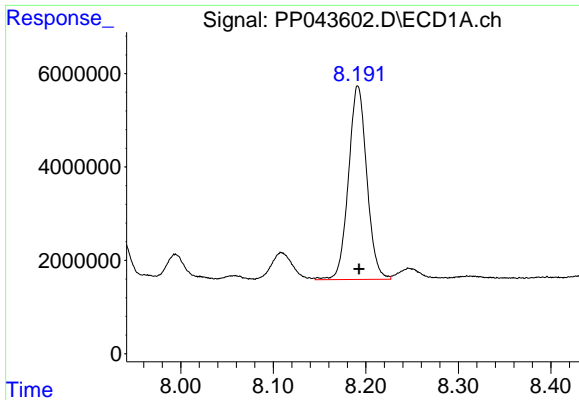
#36 AR-1262-1

R.T.: 7.601 min
 Delta R.T.: -0.001 min
 Response: 26215633
 Conc: 265.50 ng/ml



#36 AR-1262-1

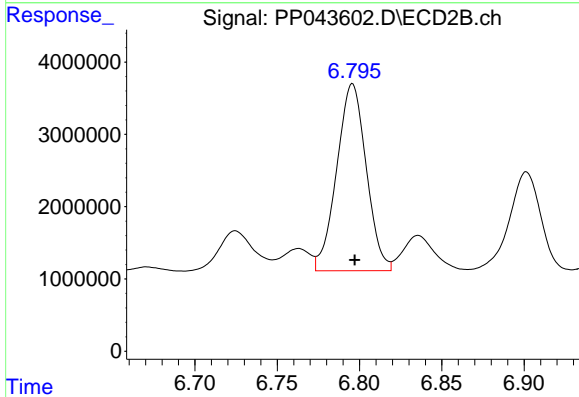
R.T.: 6.515 min
 Delta R.T.: -0.002 min
 Response: 33413388
 Conc: 303.94 ng/ml



#37 AR-1262-2

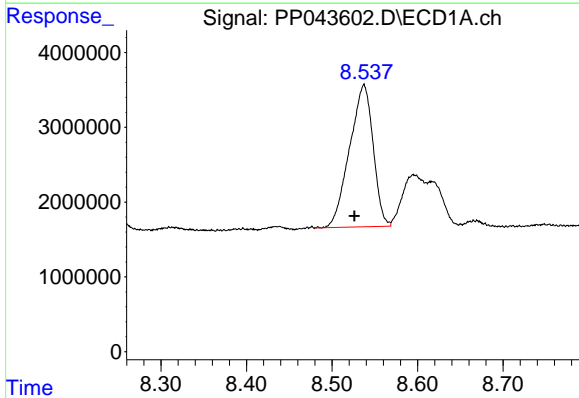
R.T.: 8.192 min
 Delta R.T.: -0.001 min
 Response: 57012190
 Conc: 353.14 ng/ml

Instrument :
 ECD_P
 ClientSampleId :
 CTY2-WC-ROLLOFFMSD



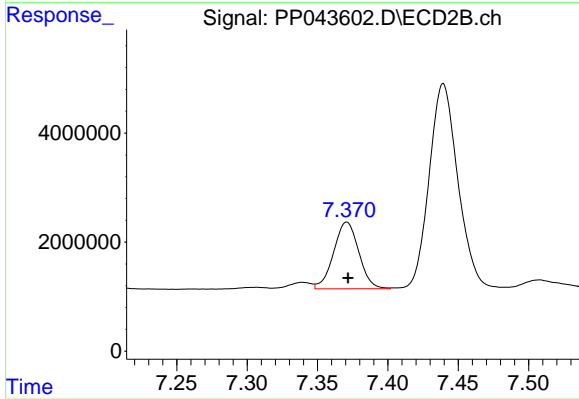
#37 AR-1262-2

R.T.: 6.796 min
 Delta R.T.: -0.001 min
 Response: 32345253
 Conc: 317.10 ng/ml



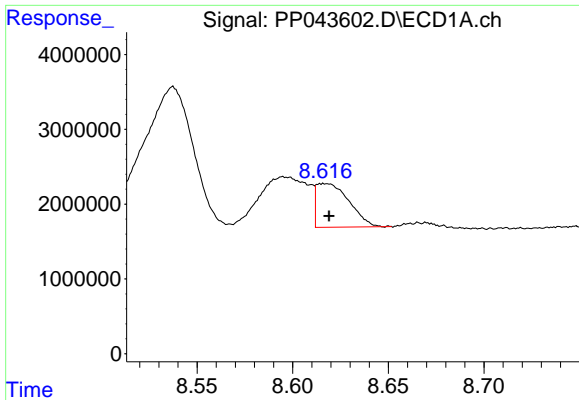
#38 AR-1262-3

R.T.: 8.537 min
 Delta R.T.: 0.011 min
 Response: 36293487
 Conc: 331.75 ng/ml



#38 AR-1262-3

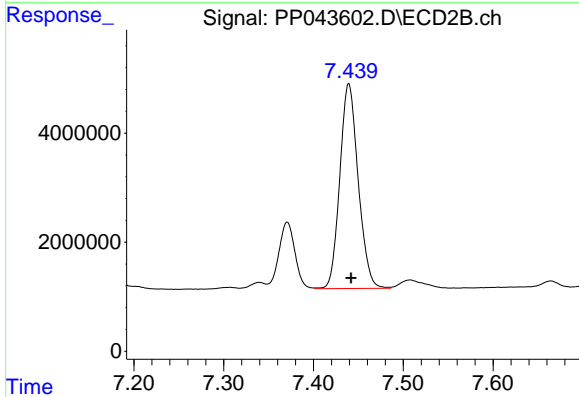
R.T.: 7.371 min
 Delta R.T.: 0.000 min
 Response: 15240513
 Conc: 178.83 ng/ml



#39 AR-1262-4

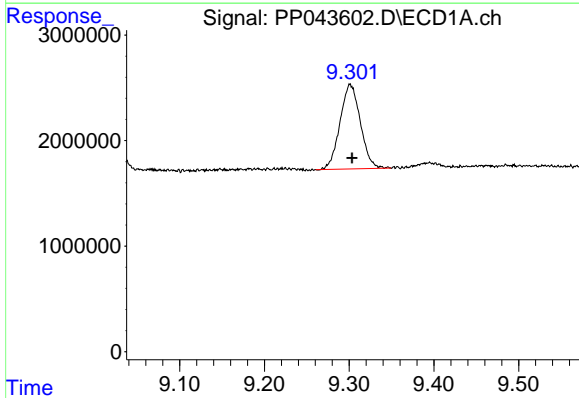
R.T.: 8.617 min
 Delta R.T.: -0.002 min
 Response: 6949432
 Conc: 144.91 ng/ml

Instrument :
 ECD_P
 ClientSampleId :
 CTY2-WC-ROLLOFFMSD



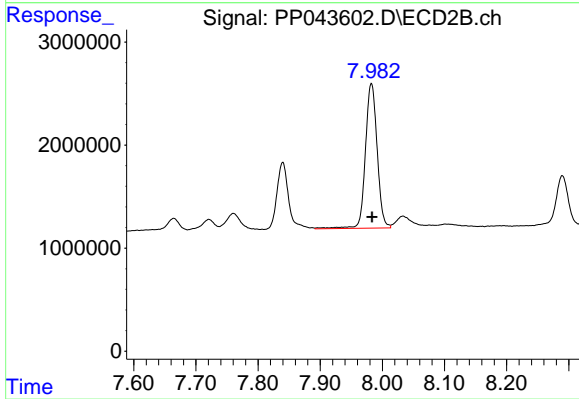
#39 AR-1262-4

R.T.: 7.439 min
 Delta R.T.: -0.002 min
 Response: 53368795
 Conc: 343.62 ng/ml



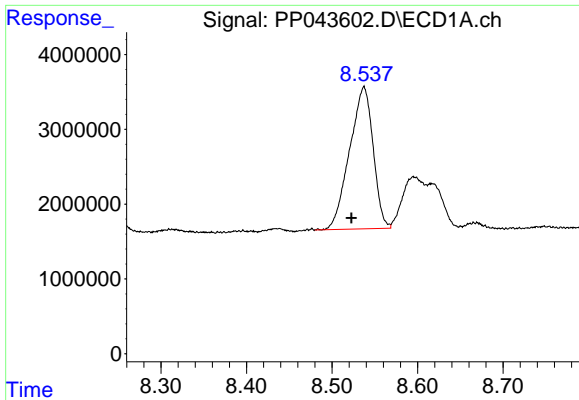
#40 AR-1262-5

R.T.: 9.301 min
 Delta R.T.: -0.002 min
 Response: 13401842
 Conc: 240.66 ng/ml



#40 AR-1262-5

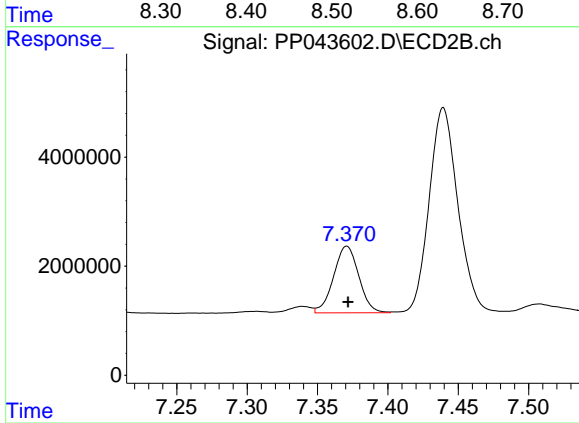
R.T.: 7.982 min
 Delta R.T.: -0.001 min
 Response: 18424041
 Conc: 236.83 ng/ml



#41 AR-1268-1

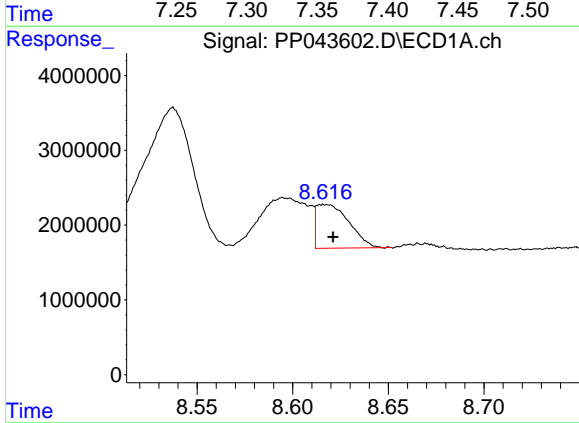
R.T.: 8.537 min
Delta R.T.: 0.015 min
Response: 36293487
Conc: 186.18 ng/ml

Instrument :
ECD_P
ClientSampleId :
CTY2-WC-ROLLOFFMSD



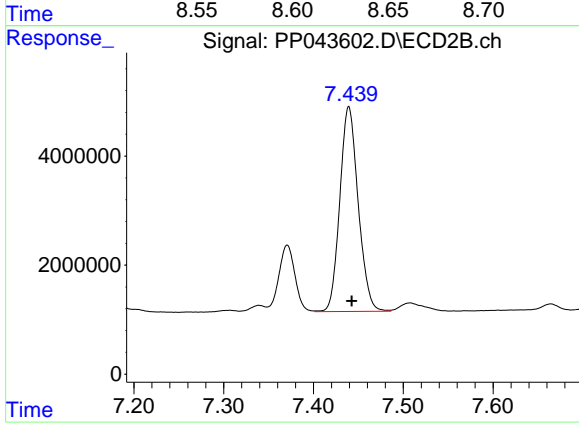
#41 AR-1268-1

R.T.: 7.371 min
Delta R.T.: 0.000 min
Response: 15240513
Conc: 60.15 ng/ml



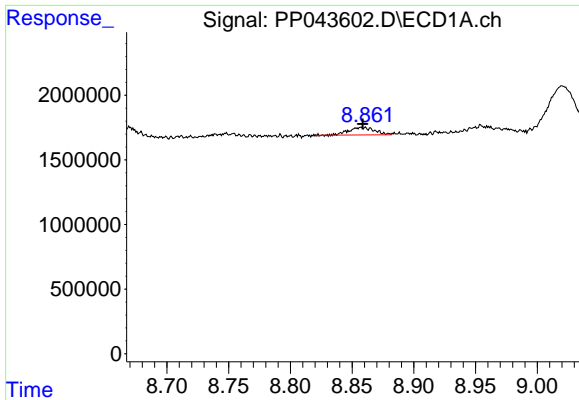
#42 AR-1268-2

R.T.: 8.617 min
Delta R.T.: -0.004 min
Response: 6949432
Conc: 39.70 ng/ml



#42 AR-1268-2

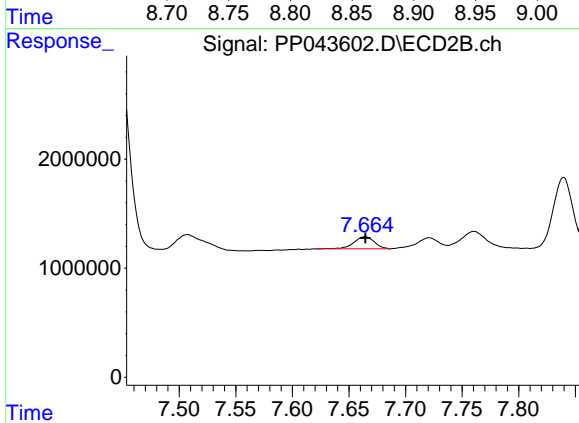
R.T.: 7.439 min
Delta R.T.: -0.003 min
Response: 53368795
Conc: 236.18 ng/ml



#43 AR-1268-3

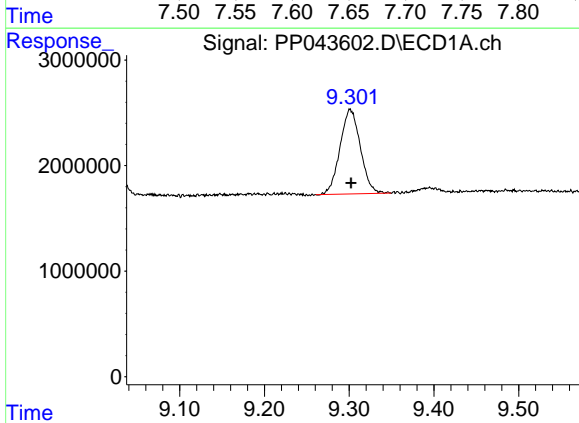
R.T.: 8.858 min
 Delta R.T.: -0.001 min
 Response: 843209
 Conc: 5.46 ng/ml

Instrument :
 ECD_P
 ClientSampleId :
 CTY2-WC-ROLLOFFMSD



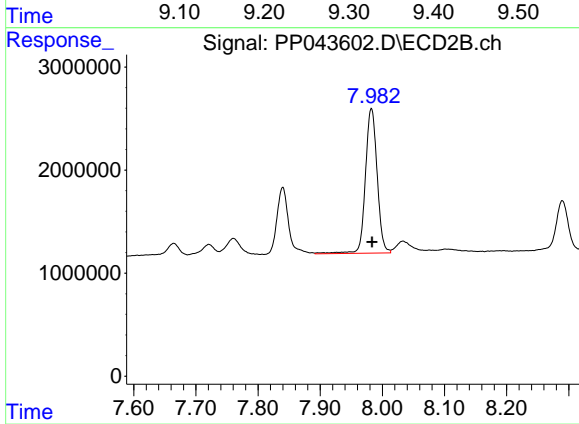
#43 AR-1268-3

R.T.: 7.664 min
 Delta R.T.: 0.000 min
 Response: 1388219
 Conc: 7.13 ng/ml



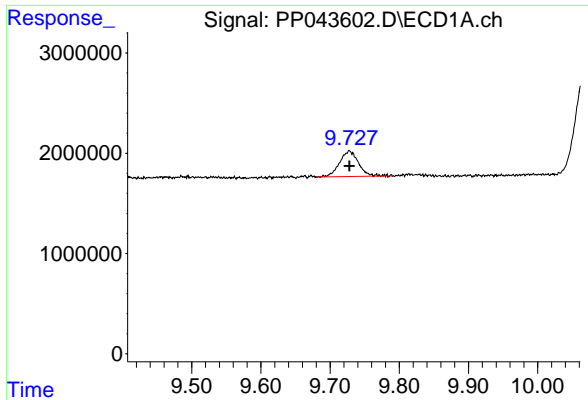
#44 AR-1268-4

R.T.: 9.301 min
 Delta R.T.: -0.001 min
 Response: 13401842
 Conc: 214.19 ng/ml



#44 AR-1268-4

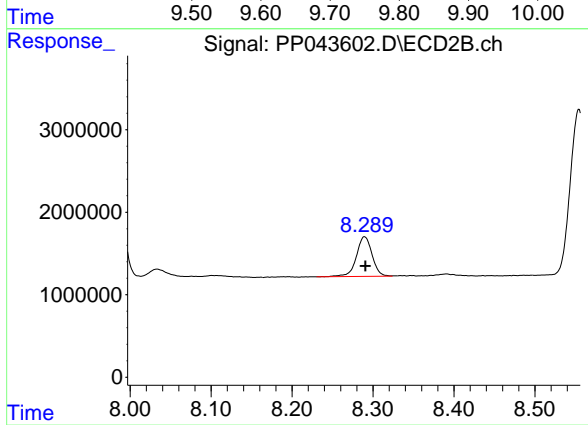
R.T.: 7.982 min
 Delta R.T.: -0.001 min
 Response: 18424041
 Conc: 204.88 ng/ml



#45 AR-1268-5

R.T.: 9.728 min
Delta R.T.: 0.000 min
Response: 4866562
Conc: 10.71 ng/ml

Instrument :
ECD_P
ClientSampleId :
CTY2-WC-ROLLOFFMSD



#45 AR-1268-5

R.T.: 8.290 min
Delta R.T.: -0.001 min
Response: 6473365
Conc: 10.77 ng/ml