

Data Path : Z:\pestpcbsrv\HPCHEM1\ECD\_P\Data\PP021122\  
 Data File : PP043608.D  
 Signal(s) : Signal #1: ECD1A.ch Signal #2: ECD2B.ch  
 Acq On : 11 Feb 2022 15:15  
 Operator : YP\AJ  
 Sample : AR1248CCC500  
 Misc :  
 ALS Vial : 5 Sample Multiplier: 1

Instrument :  
 ECD\_P  
 ClientSampleId :  
 AR1248CCC500

Integration File signal 1: autoint1.e  
 Integration File signal 2: autoint2.e  
 Quant Time: Feb 12 04:44:32 2022  
 Quant Method : Z:\pestpcbsrv\HPCHEM1\ECD\_P\methods\PP021022.M  
 Quant Title : GC EXTRACTABLES  
 QLast Update : Fri Feb 11 04:48:05 2022  
 Response via : Initial Calibration  
 Integrator: ChemStation

Volume Inj. : 2 µl  
 Signal #1 Phase : ZB-MR1 Signal #2 Phase: ZB-MR2  
 Signal #1 Info : 30Mx0.32mmx 0.50µ Signal #2 Info : 30M x 0.32mm x 0.25µm

Compound	RT#1	RT#2	Resp#1	Resp#2	ng/ml	ng/ml
System Monitoring Compounds						
1) SA Tetrachlo...	3.918	3.174	113.7E6	99445843	51.439	52.945
2) SA Decachlor...	10.068	8.553	65201553	82806664	54.889	51.040
Target Compounds						
3) L1 AR-1016-1	5.173	4.322	20836479	18492909	287.153	301.830
4) L1 AR-1016-2	5.196	4.340	25182279	19319016	238.761	228.657
5) L1 AR-1016-3	5.261	4.526	13575451	14230923	206.173	304.620 #
6) L1 AR-1016-4	5.367	4.575	15320944	25110105	282.516	671.915 #
7) L1 AR-1016-5	5.689	4.801	35741126	21940439	680.422	480.280 #
8) L2 AR-1221-1	4.146	3.400	592792	409643	23.284	17.173 #
9) L2 AR-1221-2	4.243	3.488	2001043	1861065	104.230	103.049
10) L2 AR-1221-3	4.317	3.571	2243434	2002964	39.053	38.826
11) L3 AR-1232-1	4.317	3.571	2243434	2002964	46.226	46.553
12) L3 AR-1232-2	4.883	4.340	9755631	19319016	411.679	541.182 #
13) L3 AR-1232-3	5.196	4.526	25182279	14230923	584.904	727.770
14) L3 AR-1232-4	5.367	4.618	15320944	26454102	701.885	1529.814 #
15) L3 AR-1232-5	5.470	4.801	29119550	21940439	1805.392	1168.028 #
16) L4 AR-1242-1	5.173	4.322	20836479	18492909	370.810	379.358
17) L4 AR-1242-2	5.196	4.340	25182279	19319016	304.376	286.909
18) L4 AR-1242-3	5.261	4.526	13575451	14230923	262.277	379.102 #
19) L4 AR-1242-4	5.367	4.618	15320944	26454102	358.700	732.608 #
20) L4 AR-1242-5	6.170	5.178	38191833	42994326	884.440	998.755
21) L5 AR-1248-1	5.173	4.322	20836479	18492909	508.237	496.451
22) L5 AR-1248-2	5.470	4.575	29119550	25110105	512.552	513.275
23) L5 AR-1248-3	5.689	4.618	35741126	26454102	535.718	515.522
24) L5 AR-1248-4	6.130	4.801	34587574	21940439	495.049	374.244
25) L5 AR-1248-5	6.170	5.221	38191833	37547358	552.456	655.305
26) L6 AR-1254-1	6.097	5.178	24774197	42994326	327.890	492.306 #
27) L6 AR-1254-2	6.341	5.338	38884516	17633374	346.661	231.175 #
28) L6 AR-1254-3	6.739	5.770	28285909	24459842	244.450	199.577
29) L6 AR-1254-4	7.053	6.020	17618798	20752502	220.694	262.940
30) L6 AR-1254-5	7.516	6.472	3030274	8331615	35.333	72.045 #
31) L7 AR-1260-1	6.920	5.924	9660889	16903215	115.365	211.370 #
32) L7 AR-1260-2	7.205	6.117	912621	3847633	10.082	39.401 #
33) L7 AR-1260-3	7.577f	6.279	600946	6876050	8.290	75.320 #
34) L7 AR-1260-4	7.831f	6.793	1691288	1640259	19.699	20.273
35) L7 AR-1260-5	8.193	7.061	722936	1209588	4.664	6.543 #
36) L8 AR-1262-1	7.577f	6.545f	600946	1970280	6.086	17.923 #
37) L8 AR-1262-2	8.193	6.793	722936	1640259	4.478	16.080 #
38) L8 AR-1262-3	8.536	7.382	543476	3272576	4.968	38.399 #
39) L8 AR-1262-4	8.593f	7.436	290160	1331923	6.050	8.576 #
40) L8 AR-1262-5	9.304	7.981	149260	270555	2.680	3.478 #
41) L9 AR-1268-1	8.536	7.382	543476	3272576	2.788	12.917 #

Data Path : Z:\pestpcbsrv\HPCHEM1\ECD\_P\Data\PP021122\  
 Data File : PP043608.D  
 Signal(s) : Signal #1: ECD1A.ch Signal #2: ECD2B.ch  
 Acq On : 11 Feb 2022 15:15  
 Operator : YP\AJ  
 Sample : AR1248CCC500  
 Misc :  
 ALS Vial : 5 Sample Multiplier: 1

Instrument :  
 ECD\_P  
 ClientSampleId :  
 AR1248CCC500

Integration File signal 1: autoint1.e  
 Integration File signal 2: autoint2.e  
 Quant Time: Feb 12 04:44:32 2022  
 Quant Method : Z:\pestpcbsrv\HPCHEM1\ECD\_P\methods\PP021022.M  
 Quant Title : GC EXTRACTABLES  
 QLast Update : Fri Feb 11 04:48:05 2022  
 Response via : Initial Calibration  
 Integrator: ChemStation

Volume Inj. : 2 µl  
 Signal #1 Phase : ZB-MR1 Signal #2 Phase: ZB-MR2  
 Signal #1 Info : 30Mx0.32mmx 0.50µ Signal #2 Info : 30M x 0.32mm x 0.25µm

	Compound	RT#1	RT#2	Resp#1	Resp#2	ng/ml	ng/ml
42)	L9 AR-1268-2	8.593f	7.436	290160	1331923	1.658	5.894 #
43)	L9 AR-1268-3	8.852	7.663	188320	231927	1.220	1.191
44)	L9 AR-1268-4	9.304	7.981	149260	270555	2.385	3.009 #
45)	L9 AR-1268-5	9.729	8.289	362135	643069	0.797	1.070 #

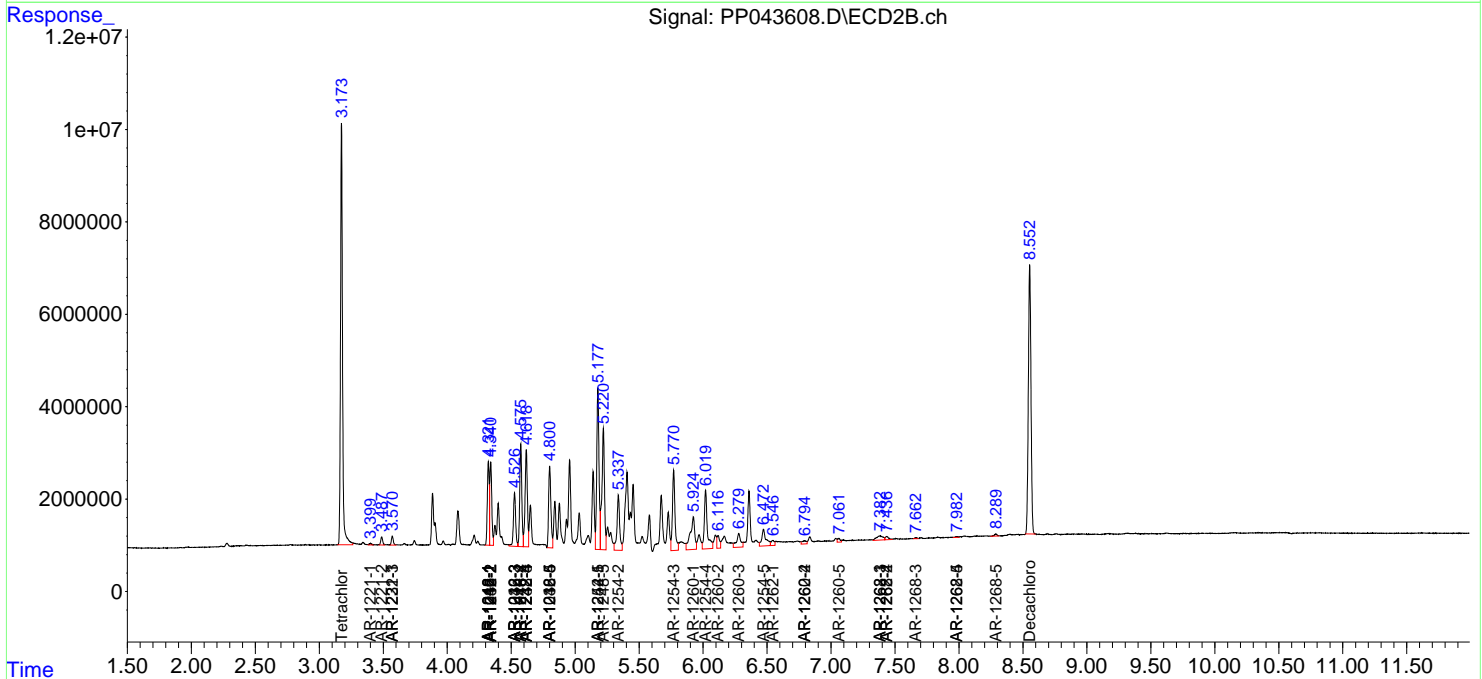
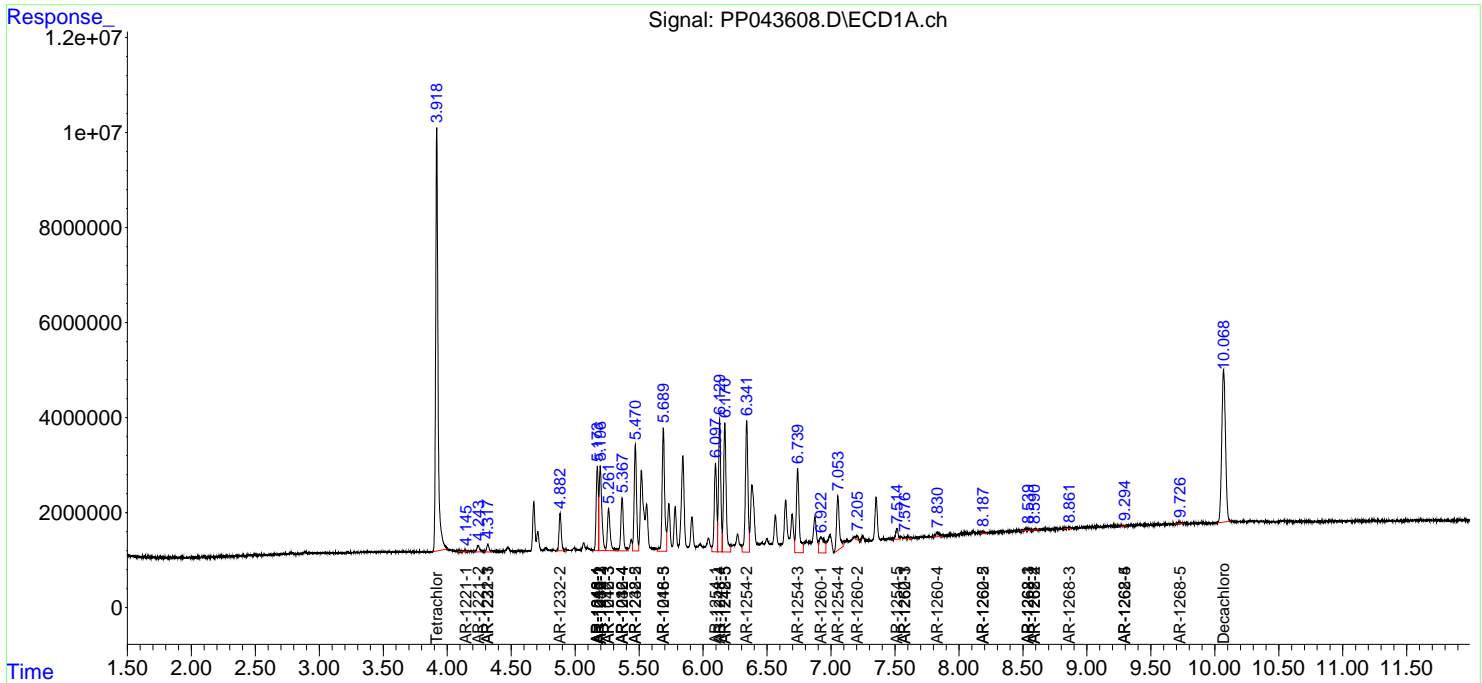
(f)=RT Delta > 1/2 Window (#)=Amounts differ by > 25% (m)=manual int.

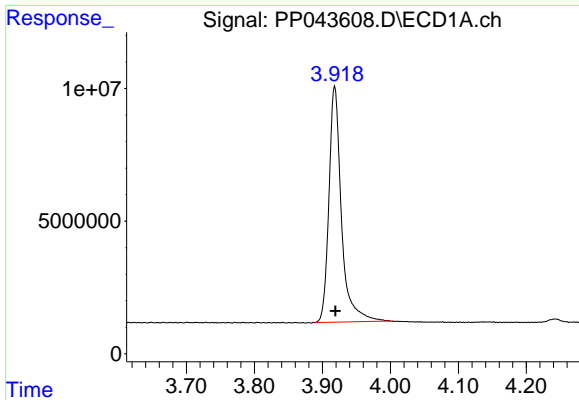
Data Path : Z:\pestpcbsrv\HPCHEM1\ECD\_P\Data\PP021122\  
 Data File : PP043608.D  
 Signal(s) : Signal #1: ECD1A.ch Signal #2: ECD2B.ch  
 Acq On : 11 Feb 2022 15:15  
 Operator : YP\AJ  
 Sample : AR1248CCC500  
 Misc :  
 ALS Vial : 5 Sample Multiplier: 1

Instrument :  
 ECD\_P  
 ClientSampleId :  
 AR1248CCC500

Integration File signal 1: autoint1.e  
 Integration File signal 2: autoint2.e  
 Quant Time: Feb 12 04:44:32 2022  
 Quant Method : Z:\pestpcbsrv\HPCHEM1\ECD\_P\methods\PP021022.M  
 Quant Title : GC EXTRACTABLES  
 QLast Update : Fri Feb 11 04:48:05 2022  
 Response via : Initial Calibration  
 Integrator: ChemStation

Volume Inj. : 2 µl  
 Signal #1 Phase : ZB-MR1 Signal #2 Phase: ZB-MR2  
 Signal #1 Info : 30Mx0.32mmx 0.50µ Signal #2 Info : 30M x 0.32mm x 0.25µm

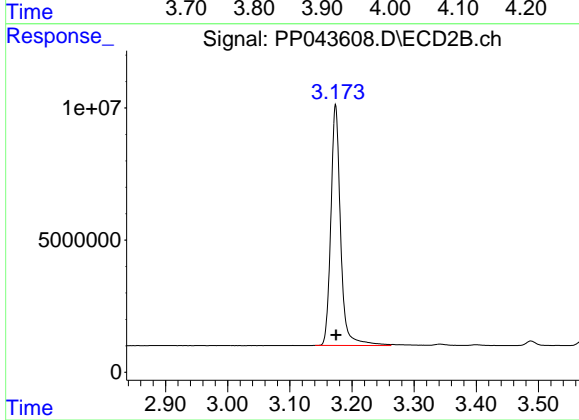




#1 Tetrachloro-m-xylene

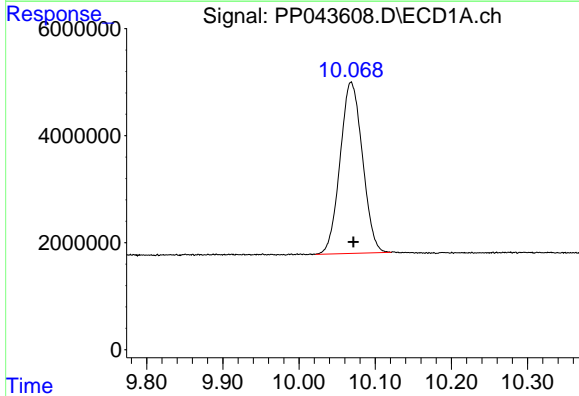
R.T.: 3.918 min  
Delta R.T.: 0.000 min  
Response: 113733202  
Conc: 51.44 ng/ml

Instrument :  
ECD\_P  
ClientSampleId :  
AR1248CCC500



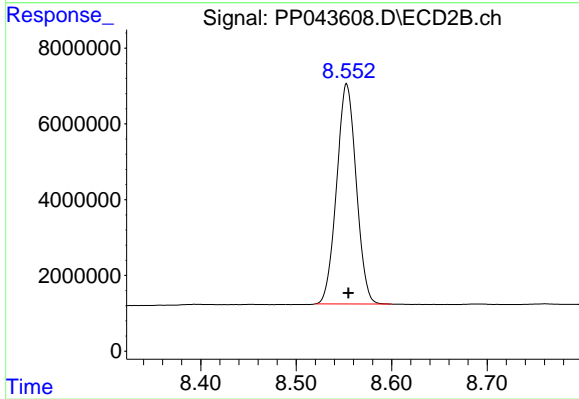
#1 Tetrachloro-m-xylene

R.T.: 3.174 min  
Delta R.T.: 0.000 min  
Response: 99445843  
Conc: 52.95 ng/ml



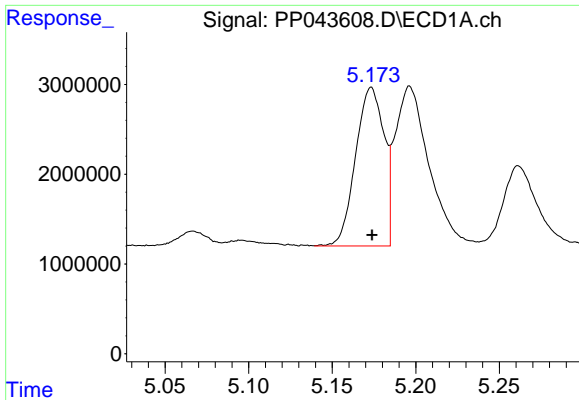
#2 Decachlorobiphenyl

R.T.: 10.068 min  
Delta R.T.: -0.003 min  
Response: 65201553  
Conc: 54.89 ng/ml



#2 Decachlorobiphenyl

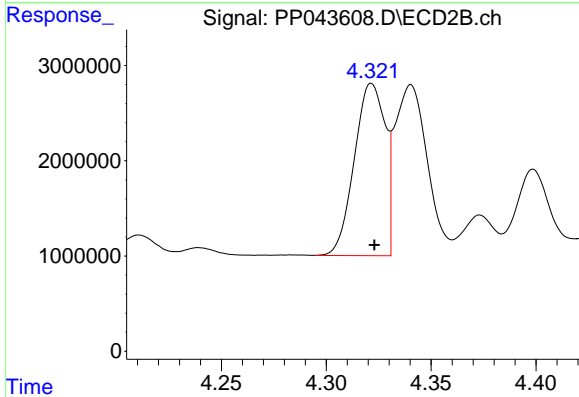
R.T.: 8.553 min  
Delta R.T.: -0.002 min  
Response: 82806664  
Conc: 51.04 ng/ml



#3 AR-1016-1

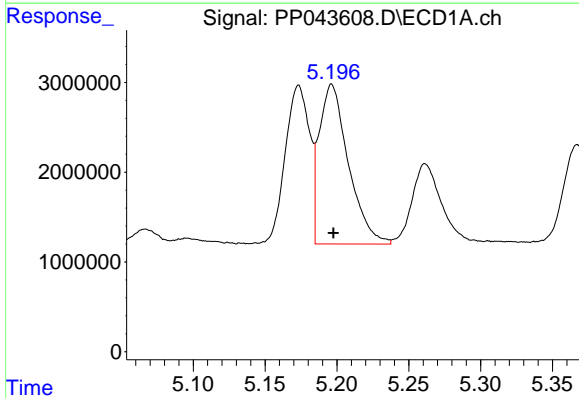
R.T.: 5.173 min  
 Delta R.T.: 0.000 min  
 Response: 20836479  
 Conc: 287.15 ng/ml

Instrument :  
 ECD\_P  
 ClientSampleId :  
 AR1248CCC500



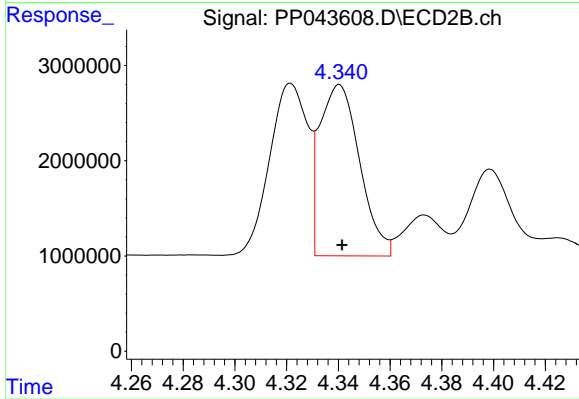
#3 AR-1016-1

R.T.: 4.322 min  
 Delta R.T.: -0.001 min  
 Response: 18492909  
 Conc: 301.83 ng/ml



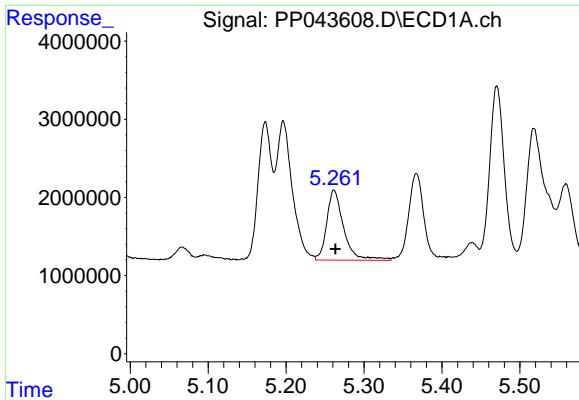
#4 AR-1016-2

R.T.: 5.196 min  
 Delta R.T.: -0.001 min  
 Response: 25182279  
 Conc: 238.76 ng/ml



#4 AR-1016-2

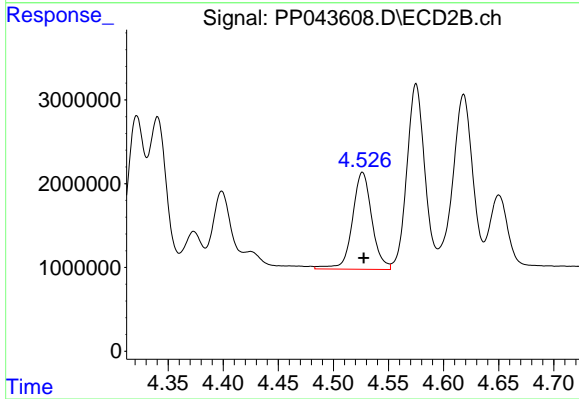
R.T.: 4.340 min  
 Delta R.T.: -0.001 min  
 Response: 19319016  
 Conc: 228.66 ng/ml



#5 AR-1016-3

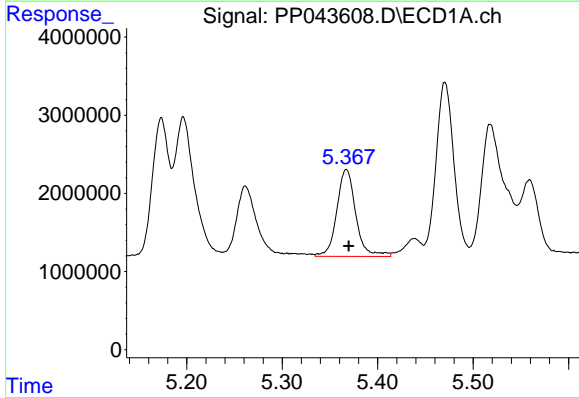
R.T.: 5.261 min  
 Delta R.T.: -0.002 min  
 Response: 13575451  
 Conc: 206.17 ng/ml

Instrument :  
 ECD\_P  
 ClientSampleId :  
 AR1248CCC500



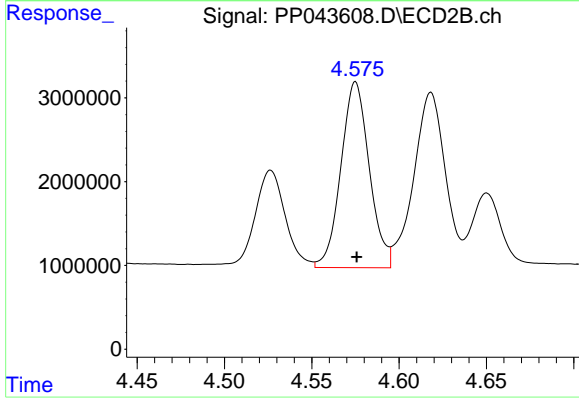
#5 AR-1016-3

R.T.: 4.526 min  
 Delta R.T.: 0.000 min  
 Response: 14230923  
 Conc: 304.62 ng/ml



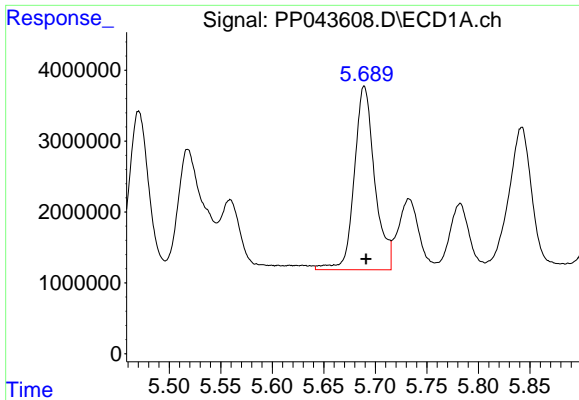
#6 AR-1016-4

R.T.: 5.367 min  
 Delta R.T.: -0.002 min  
 Response: 15320944  
 Conc: 282.52 ng/ml



#6 AR-1016-4

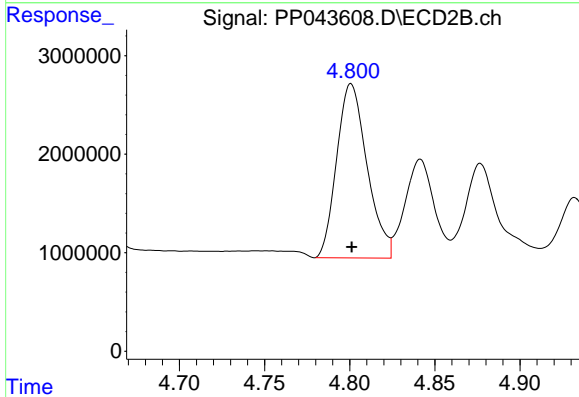
R.T.: 4.575 min  
 Delta R.T.: 0.000 min  
 Response: 25110105  
 Conc: 671.91 ng/ml



#7 AR-1016-5

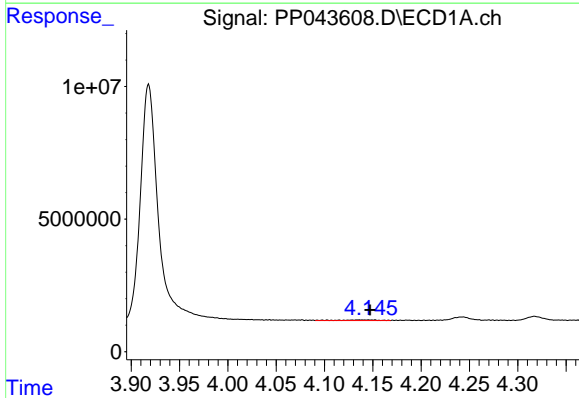
R.T.: 5.689 min  
 Delta R.T.: -0.002 min  
 Response: 35741126  
 Conc: 680.42 ng/ml

Instrument :  
 ECD\_P  
 ClientSampleId :  
 AR1248CCC500



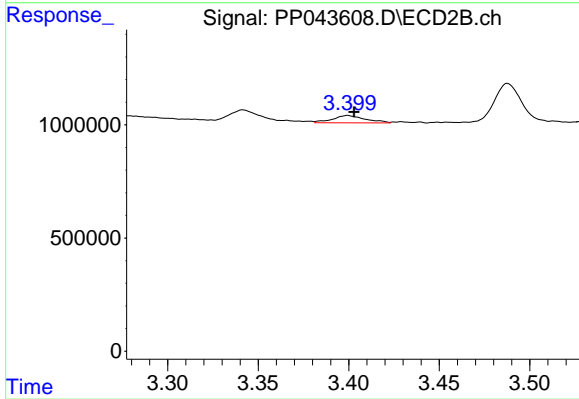
#7 AR-1016-5

R.T.: 4.801 min  
 Delta R.T.: 0.000 min  
 Response: 21940439  
 Conc: 480.28 ng/ml



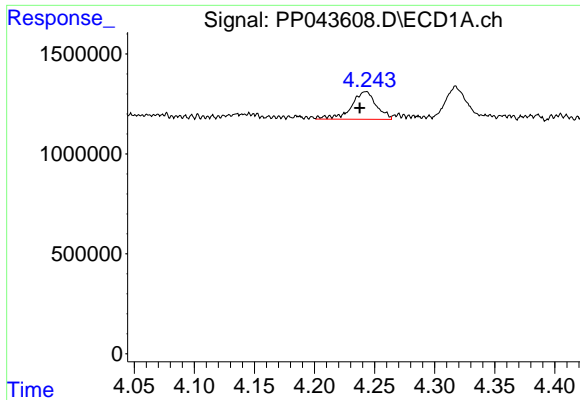
#8 AR-1221-1

R.T.: 4.146 min  
 Delta R.T.: -0.002 min  
 Response: 592792  
 Conc: 23.28 ng/ml



#8 AR-1221-1

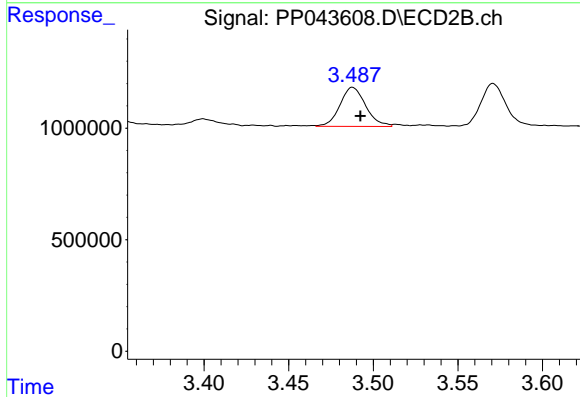
R.T.: 3.400 min  
 Delta R.T.: -0.003 min  
 Response: 409643  
 Conc: 17.17 ng/ml



#9 AR-1221-2

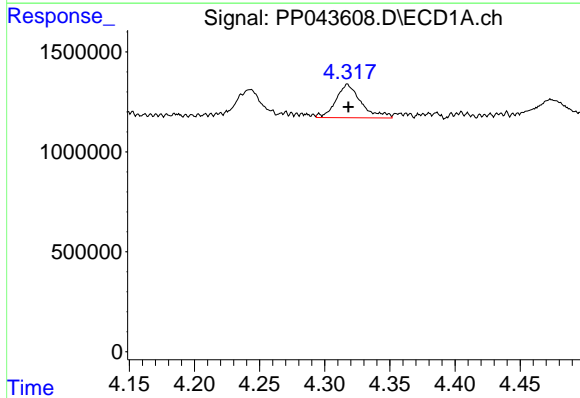
R.T.: 4.243 min  
 Delta R.T.: 0.005 min  
 Response: 2001043  
 Conc: 104.23 ng/ml

Instrument :  
 ECD\_P  
 ClientSampleId :  
 AR1248CCC500



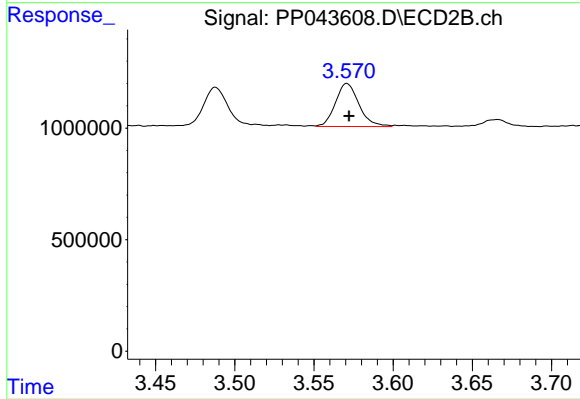
#9 AR-1221-2

R.T.: 3.488 min  
 Delta R.T.: -0.005 min  
 Response: 1861065  
 Conc: 103.05 ng/ml



#10 AR-1221-3

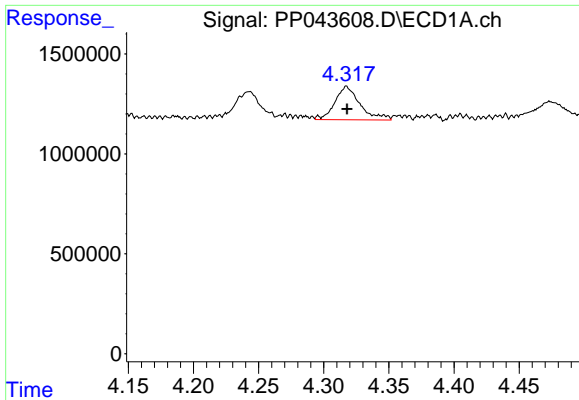
R.T.: 4.317 min  
 Delta R.T.: 0.000 min  
 Response: 2243434  
 Conc: 39.05 ng/ml



#10 AR-1221-3

R.T.: 3.571 min  
 Delta R.T.: -0.001 min  
 Response: 2002964  
 Conc: 38.83 ng/ml

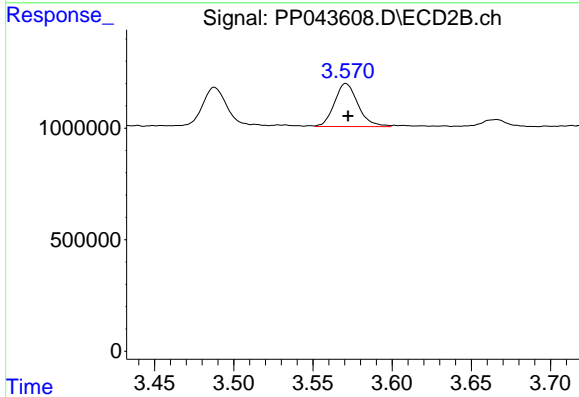




#11 AR-1232-1

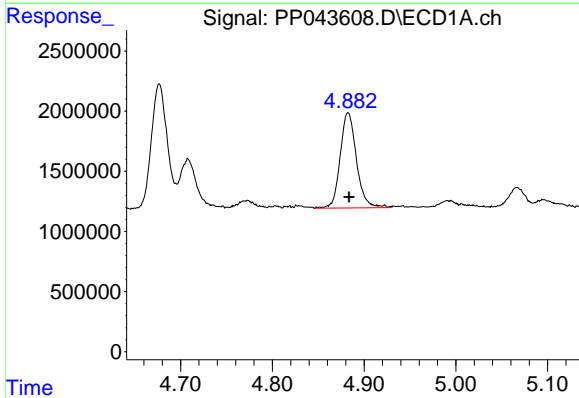
R.T.: 4.317 min  
 Delta R.T.: 0.000 min  
 Response: 2243434  
 Conc: 46.23 ng/ml

Instrument :  
 ECD\_P  
 ClientSampleId :  
 AR1248CCC500



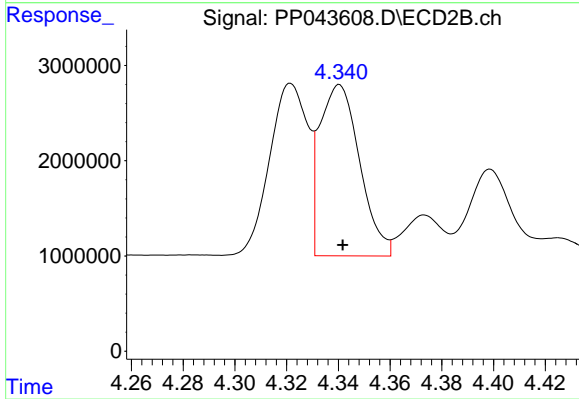
#11 AR-1232-1

R.T.: 3.571 min  
 Delta R.T.: -0.001 min  
 Response: 2002964  
 Conc: 46.55 ng/ml



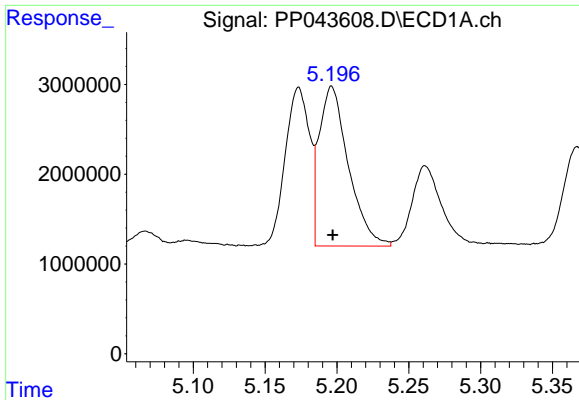
#12 AR-1232-2

R.T.: 4.883 min  
 Delta R.T.: -0.001 min  
 Response: 9755631  
 Conc: 411.68 ng/ml



#12 AR-1232-2

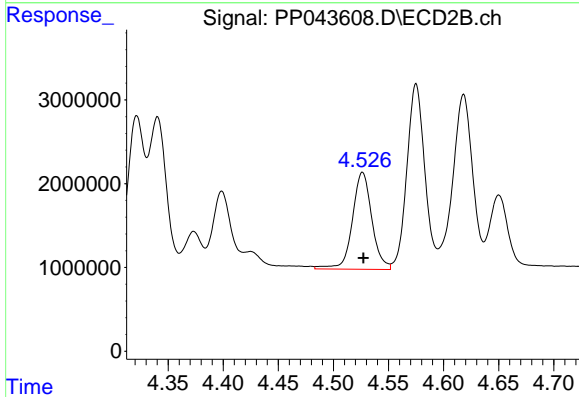
R.T.: 4.340 min  
 Delta R.T.: -0.001 min  
 Response: 19319016  
 Conc: 541.18 ng/ml



#13 AR-1232-3

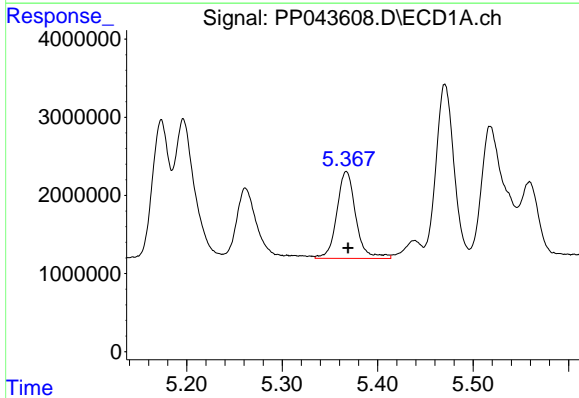
R.T.: 5.196 min  
 Delta R.T.: 0.000 min  
 Response: 25182279  
 Conc: 584.90 ng/ml

Instrument :  
 ECD\_P  
 ClientSampleId :  
 AR1248CCC500



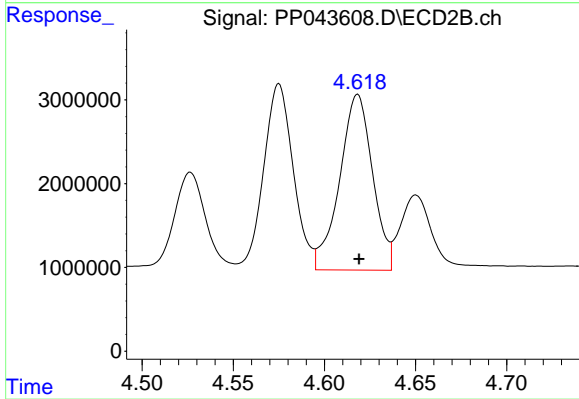
#13 AR-1232-3

R.T.: 4.526 min  
 Delta R.T.: 0.000 min  
 Response: 14230923  
 Conc: 727.77 ng/ml



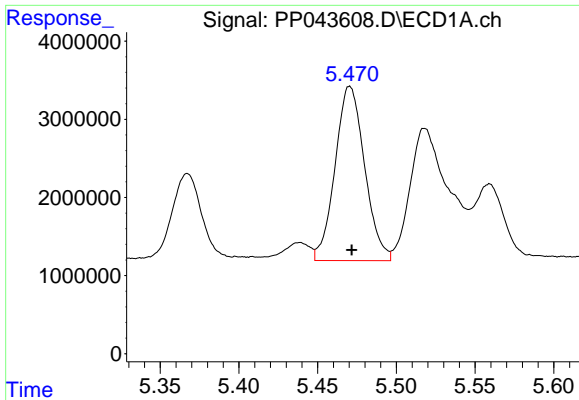
#14 AR-1232-4

R.T.: 5.367 min  
 Delta R.T.: -0.002 min  
 Response: 15320944  
 Conc: 701.88 ng/ml



#14 AR-1232-4

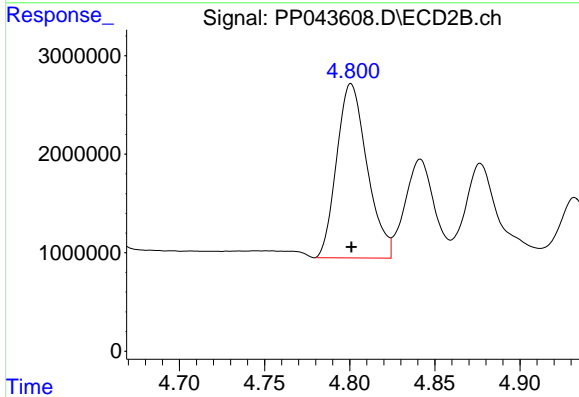
R.T.: 4.618 min  
 Delta R.T.: 0.000 min  
 Response: 26454102  
 Conc: 1529.81 ng/ml



#15 AR-1232-5

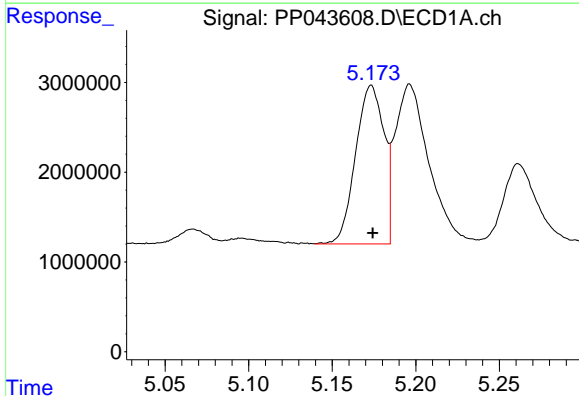
R.T.: 5.470 min  
 Delta R.T.: -0.001 min  
 Response: 29119550  
 Conc: 1805.39 ng/ml

Instrument :  
 ECD\_P  
 ClientSampleId :  
 AR1248CCC500



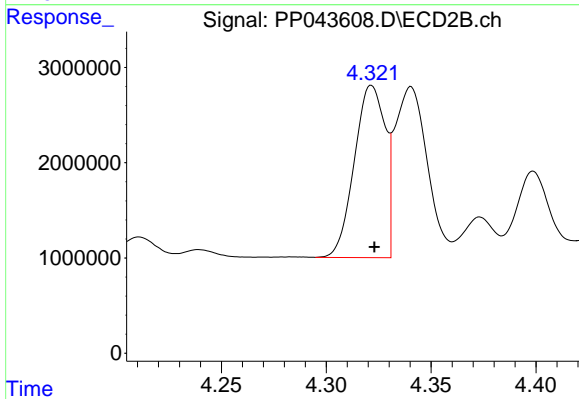
#15 AR-1232-5

R.T.: 4.801 min  
 Delta R.T.: 0.000 min  
 Response: 21940439  
 Conc: 1168.03 ng/ml



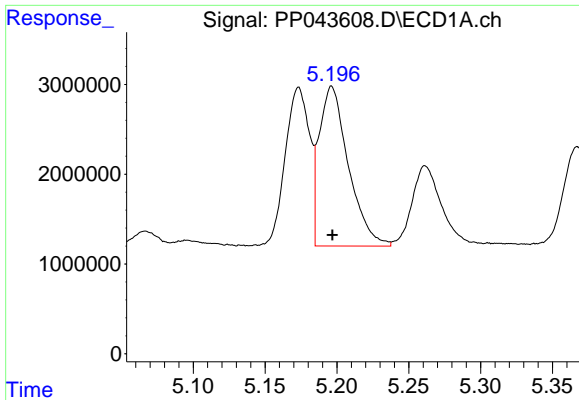
#16 AR-1242-1

R.T.: 5.173 min  
 Delta R.T.: 0.000 min  
 Response: 20836479  
 Conc: 370.81 ng/ml



#16 AR-1242-1

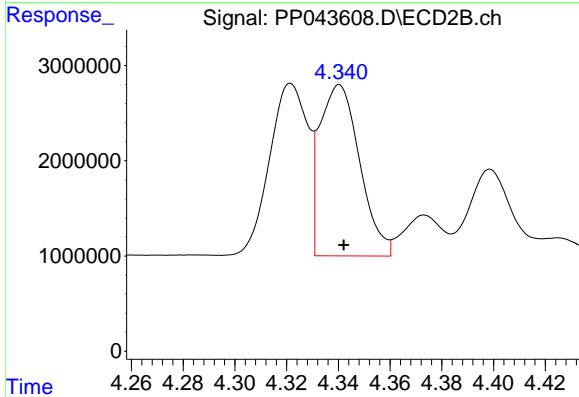
R.T.: 4.322 min  
 Delta R.T.: -0.001 min  
 Response: 18492909  
 Conc: 379.36 ng/ml



#17 AR-1242-2

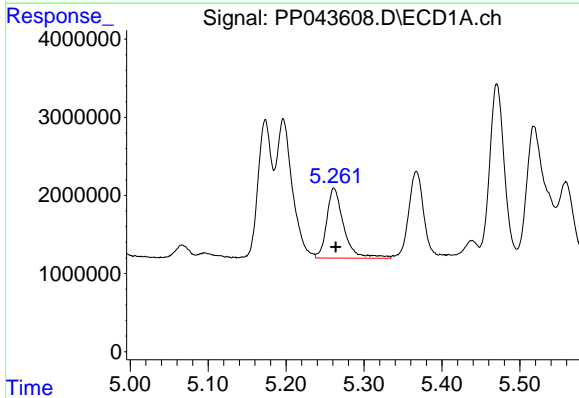
R.T.: 5.196 min  
 Delta R.T.: 0.000 min  
 Response: 25182279  
 Conc: 304.38 ng/ml

Instrument :  
 ECD\_P  
 ClientSampleId :  
 AR1248CCC500



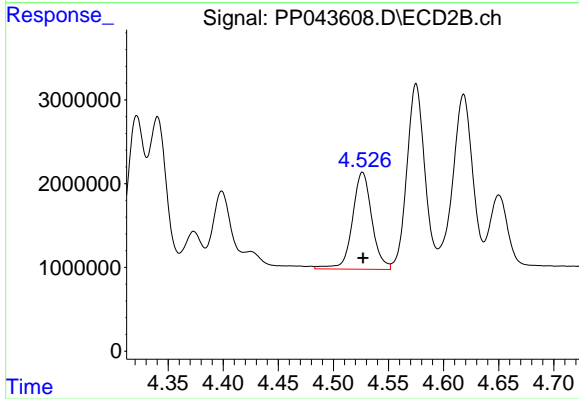
#17 AR-1242-2

R.T.: 4.340 min  
 Delta R.T.: -0.002 min  
 Response: 19319016  
 Conc: 286.91 ng/ml



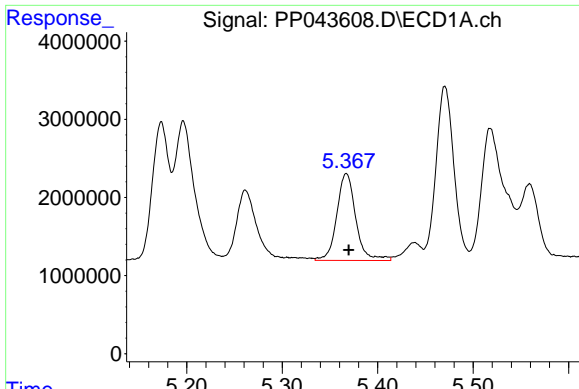
#18 AR-1242-3

R.T.: 5.261 min  
 Delta R.T.: -0.002 min  
 Response: 13575451  
 Conc: 262.28 ng/ml



#18 AR-1242-3

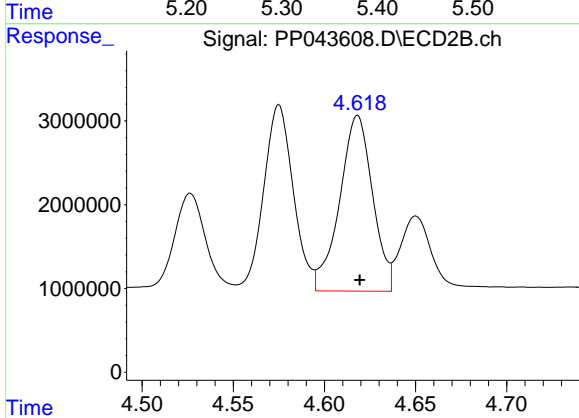
R.T.: 4.526 min  
 Delta R.T.: 0.000 min  
 Response: 14230923  
 Conc: 379.10 ng/ml



#19 AR-1242-4

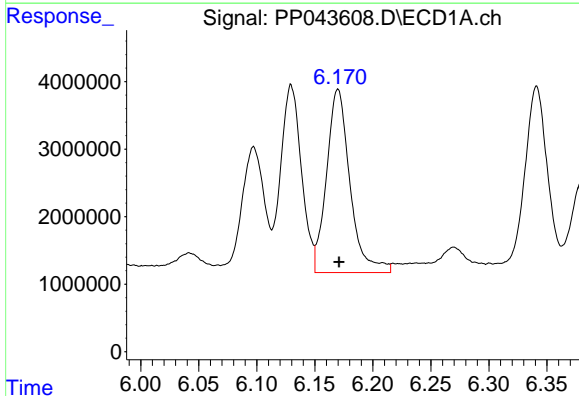
R.T.: 5.367 min  
 Delta R.T.: -0.002 min  
 Response: 15320944  
 Conc: 358.70 ng/ml

Instrument :  
 ECD\_P  
 ClientSampleId :  
 AR1248CCC500



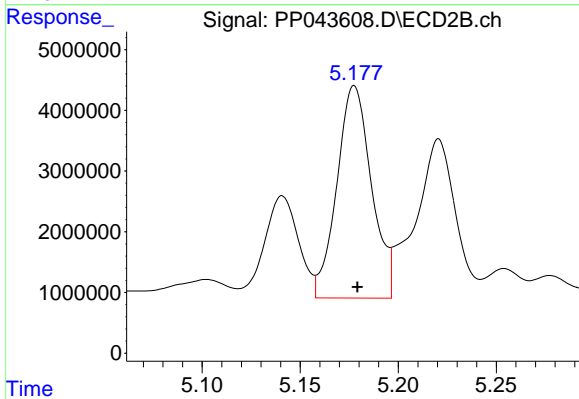
#19 AR-1242-4

R.T.: 4.618 min  
 Delta R.T.: -0.001 min  
 Response: 26454102  
 Conc: 732.61 ng/ml



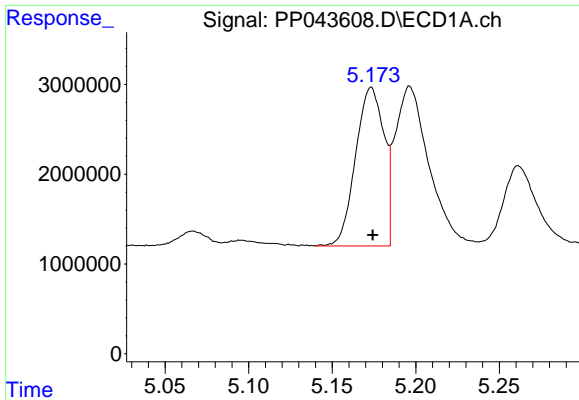
#20 AR-1242-5

R.T.: 6.170 min  
 Delta R.T.: 0.000 min  
 Response: 38191833  
 Conc: 884.44 ng/ml



#20 AR-1242-5

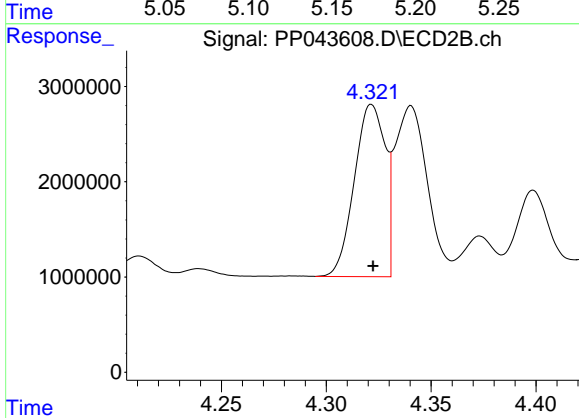
R.T.: 5.178 min  
 Delta R.T.: -0.002 min  
 Response: 42994326  
 Conc: 998.75 ng/ml



#21 AR-1248-1

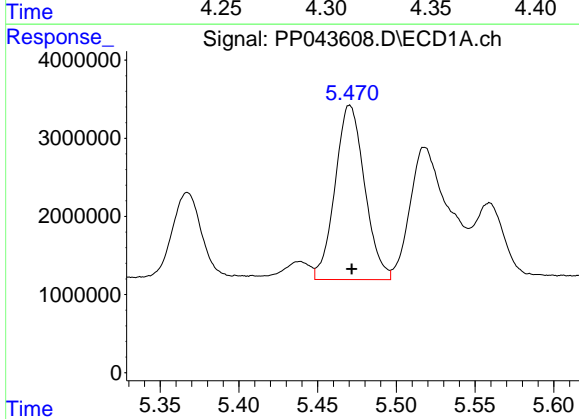
R.T.: 5.173 min  
 Delta R.T.: 0.000 min  
 Response: 20836479  
 Conc: 508.24 ng/ml

Instrument :  
 ECD\_P  
 ClientSampleId :  
 AR1248CCC500



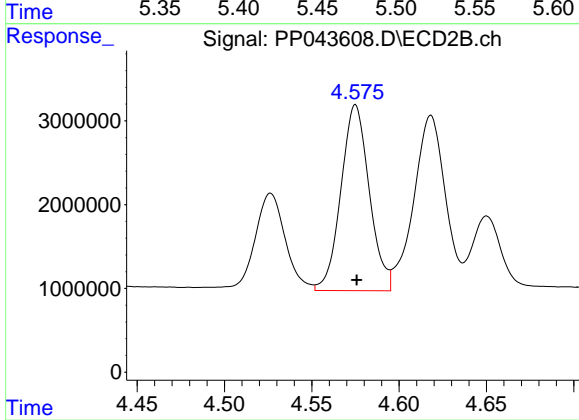
#21 AR-1248-1

R.T.: 4.322 min  
 Delta R.T.: 0.000 min  
 Response: 18492909  
 Conc: 496.45 ng/ml



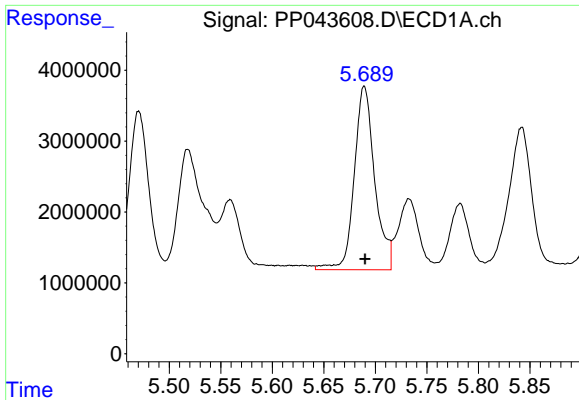
#22 AR-1248-2

R.T.: 5.470 min  
 Delta R.T.: -0.001 min  
 Response: 29119550  
 Conc: 512.55 ng/ml



#22 AR-1248-2

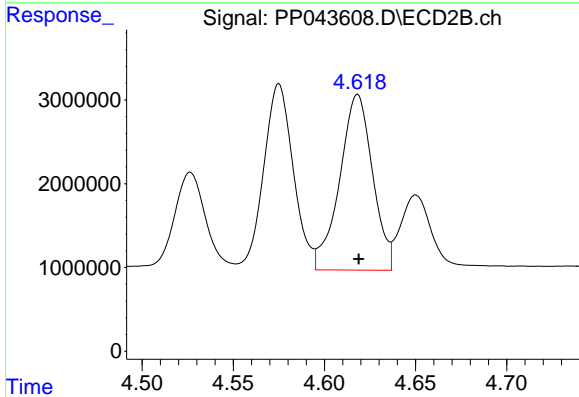
R.T.: 4.575 min  
 Delta R.T.: 0.000 min  
 Response: 25110105  
 Conc: 513.27 ng/ml



#23 AR-1248-3

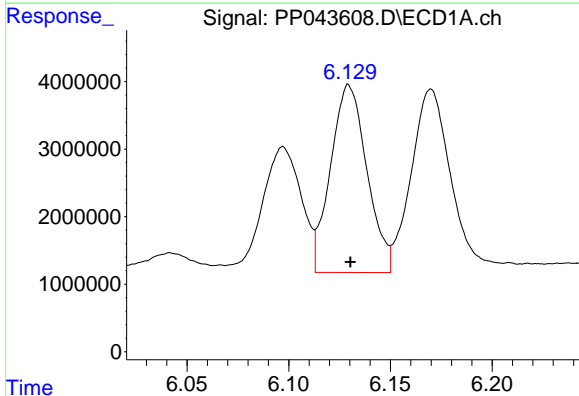
R.T.: 5.689 min  
 Delta R.T.: 0.000 min  
 Response: 35741126  
 Conc: 535.72 ng/ml

Instrument :  
 ECD\_P  
 ClientSampleId :  
 AR1248CCC500



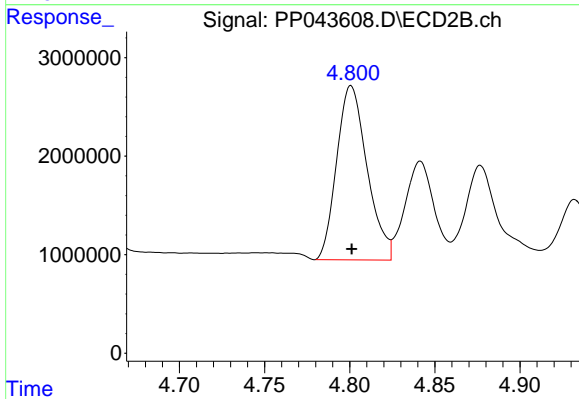
#23 AR-1248-3

R.T.: 4.618 min  
 Delta R.T.: 0.000 min  
 Response: 26454102  
 Conc: 515.52 ng/ml



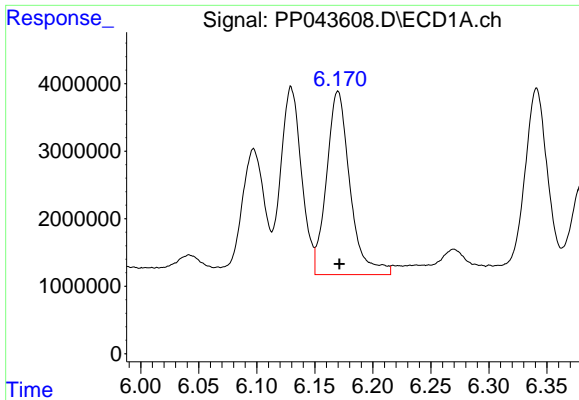
#24 AR-1248-4

R.T.: 6.130 min  
 Delta R.T.: 0.000 min  
 Response: 34587574  
 Conc: 495.05 ng/ml



#24 AR-1248-4

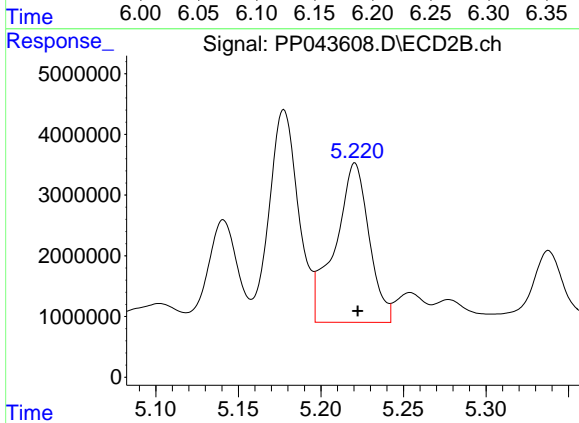
R.T.: 4.801 min  
 Delta R.T.: 0.000 min  
 Response: 21940439  
 Conc: 374.24 ng/ml



#25 AR-1248-5

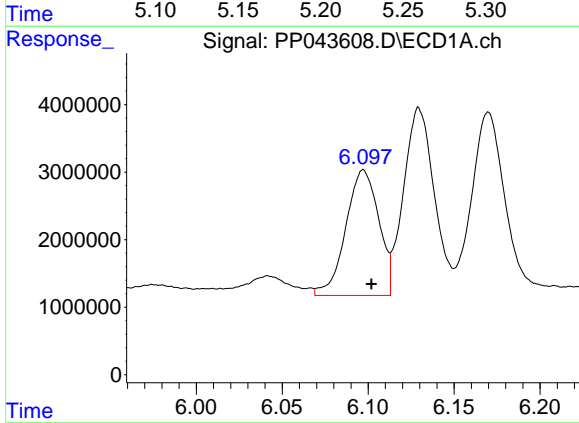
R.T.: 6.170 min  
 Delta R.T.: -0.001 min  
 Response: 38191833  
 Conc: 552.46 ng/ml

Instrument :  
 ECD\_P  
 ClientSampleId :  
 AR1248CCC500



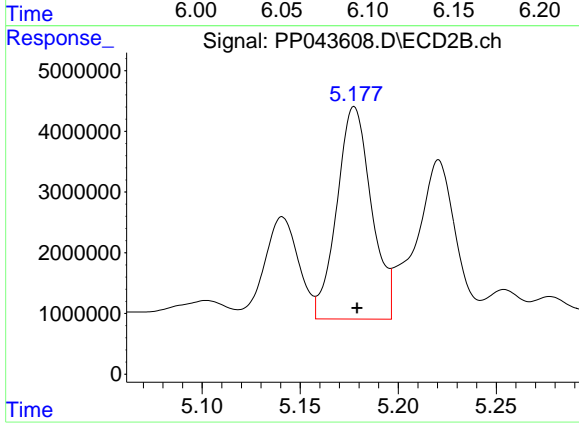
#25 AR-1248-5

R.T.: 5.221 min  
 Delta R.T.: -0.002 min  
 Response: 37547358  
 Conc: 655.30 ng/ml



#26 AR-1254-1

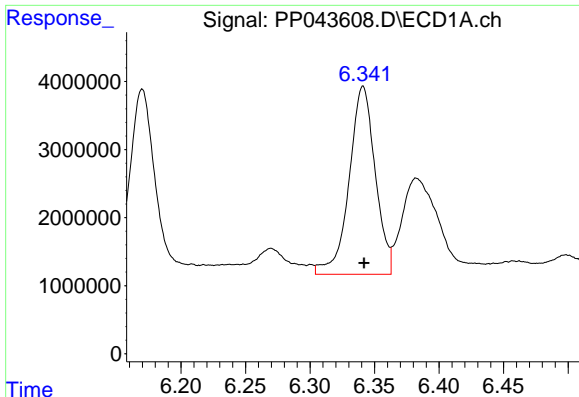
R.T.: 6.097 min  
 Delta R.T.: -0.005 min  
 Response: 24774197  
 Conc: 327.89 ng/ml



#26 AR-1254-1

R.T.: 5.178 min  
 Delta R.T.: -0.001 min  
 Response: 42994326  
 Conc: 492.31 ng/ml

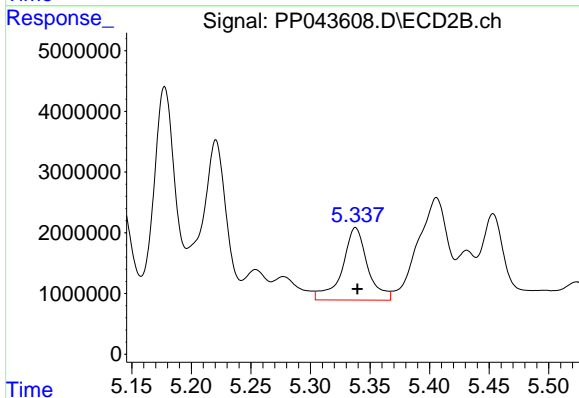




#27 AR-1254-2

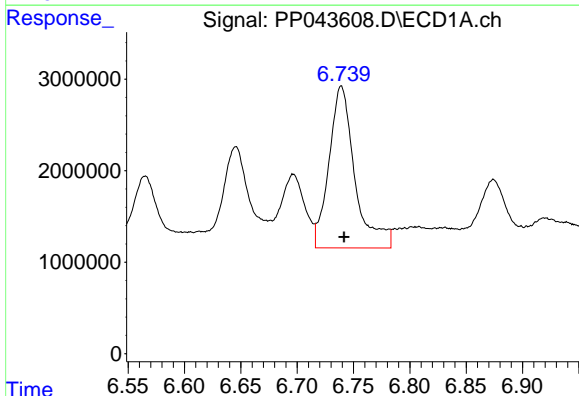
R.T.: 6.341 min  
 Delta R.T.: 0.000 min  
 Response: 38884516  
 Conc: 346.66 ng/ml

Instrument :  
 ECD\_P  
 ClientSampleId :  
 AR1248CCC500



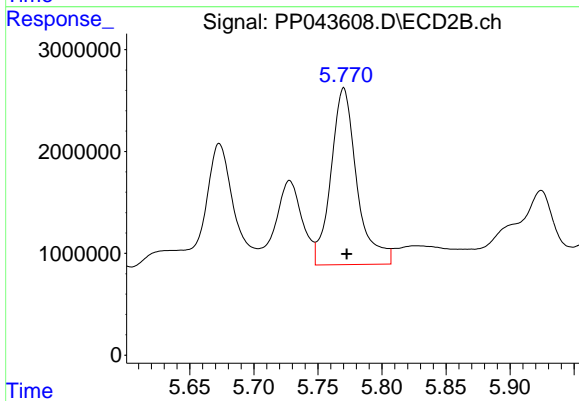
#27 AR-1254-2

R.T.: 5.338 min  
 Delta R.T.: -0.001 min  
 Response: 17633374  
 Conc: 231.17 ng/ml



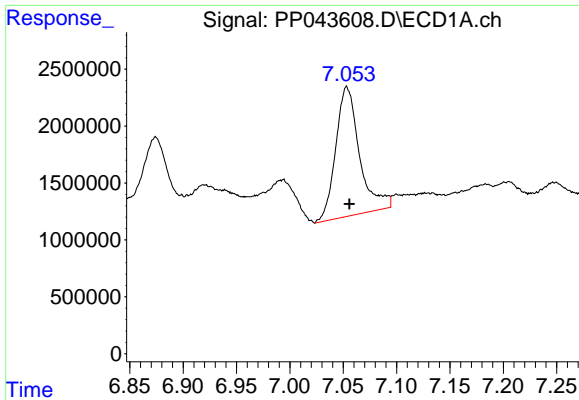
#28 AR-1254-3

R.T.: 6.739 min  
 Delta R.T.: -0.002 min  
 Response: 28285909  
 Conc: 244.45 ng/ml



#28 AR-1254-3

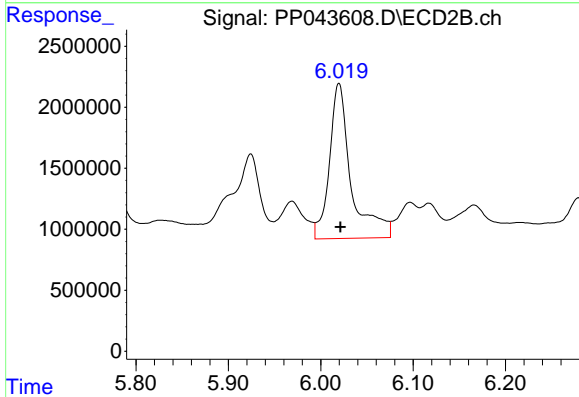
R.T.: 5.770 min  
 Delta R.T.: -0.002 min  
 Response: 24459842  
 Conc: 199.58 ng/ml



#29 AR-1254-4

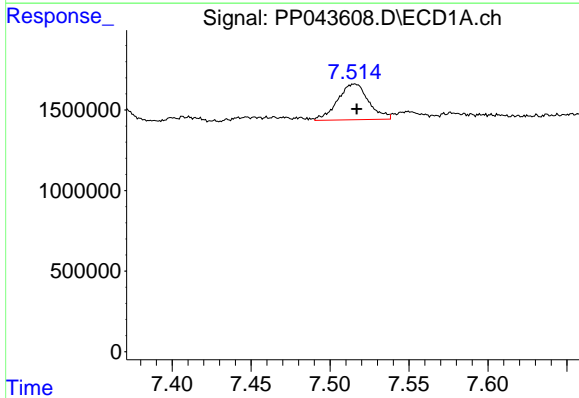
R.T.: 7.053 min  
 Delta R.T.: -0.002 min  
 Response: 17618798  
 Conc: 220.69 ng/ml

Instrument :  
 ECD\_P  
 ClientSampleId :  
 AR1248CCC500



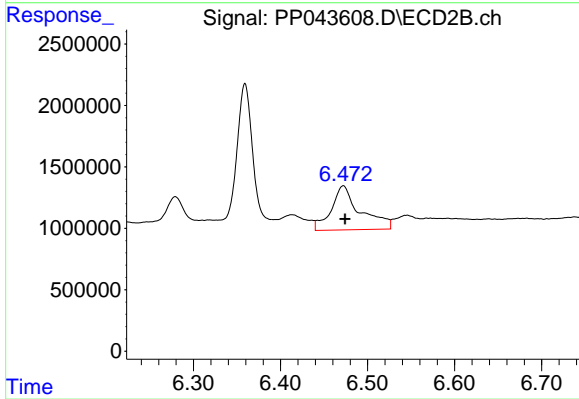
#29 AR-1254-4

R.T.: 6.020 min  
 Delta R.T.: -0.002 min  
 Response: 20752502  
 Conc: 262.94 ng/ml



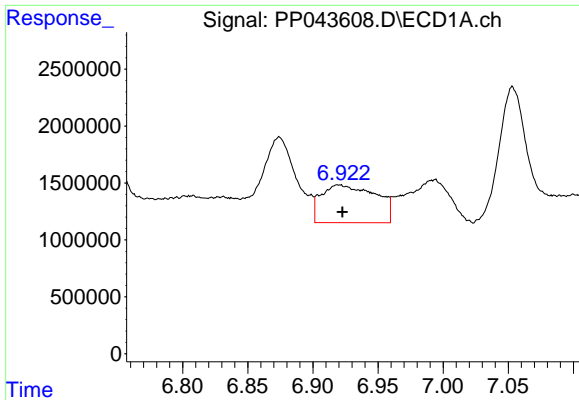
#30 AR-1254-5

R.T.: 7.516 min  
 Delta R.T.: -0.001 min  
 Response: 3030274  
 Conc: 35.33 ng/ml



#30 AR-1254-5

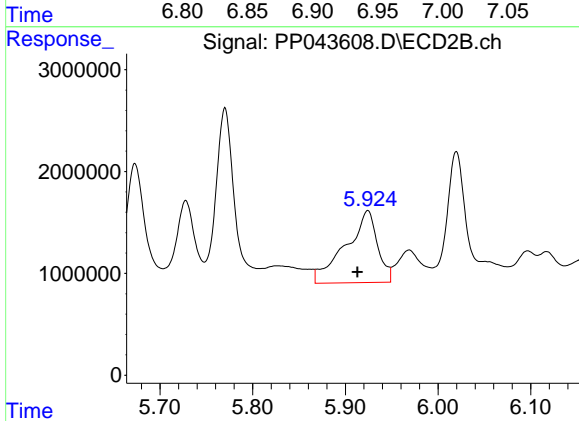
R.T.: 6.472 min  
 Delta R.T.: -0.002 min  
 Response: 8331615  
 Conc: 72.05 ng/ml



#31 AR-1260-1

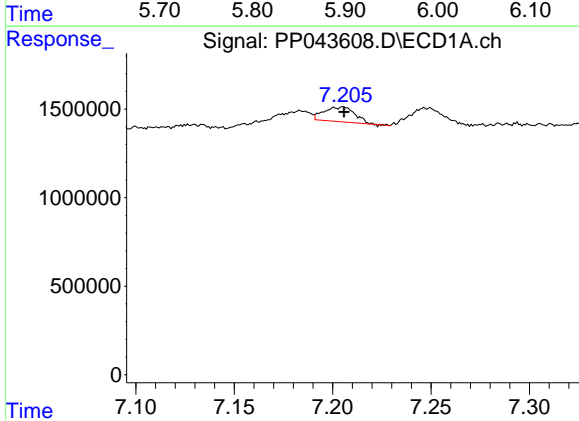
R.T.: 6.920 min  
 Delta R.T.: -0.003 min  
 Response: 9660889  
 Conc: 115.36 ng/ml

Instrument :  
 ECD\_P  
 ClientSampleId :  
 AR1248CCC500



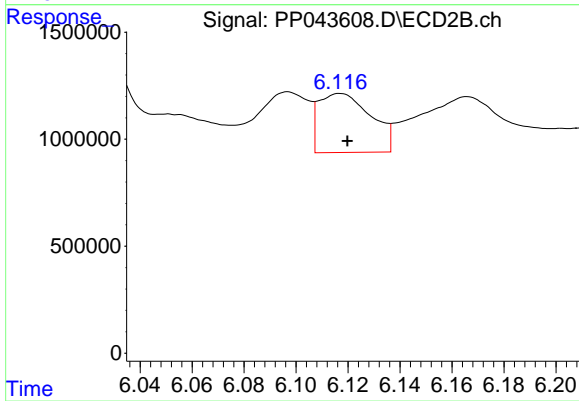
#31 AR-1260-1

R.T.: 5.924 min  
 Delta R.T.: 0.011 min  
 Response: 16903215  
 Conc: 211.37 ng/ml



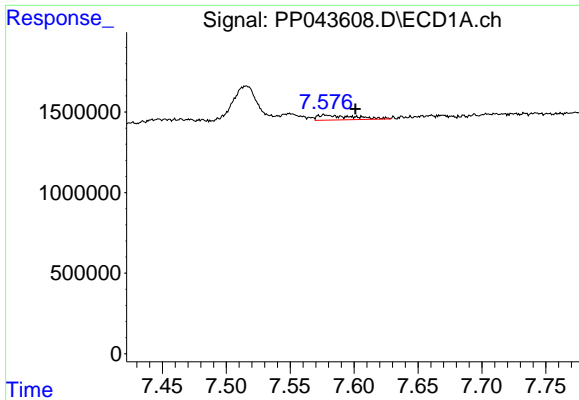
#32 AR-1260-2

R.T.: 7.205 min  
 Delta R.T.: 0.000 min  
 Response: 912621  
 Conc: 10.08 ng/ml



#32 AR-1260-2

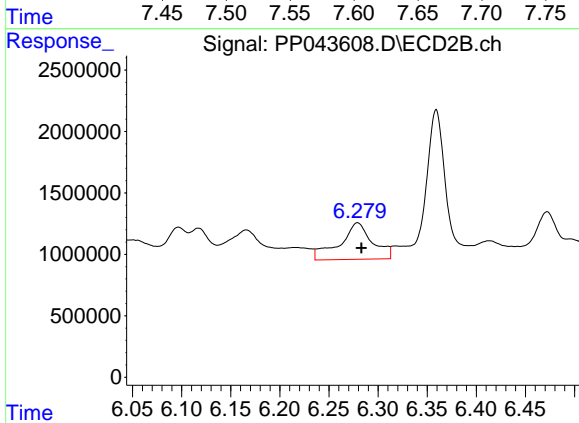
R.T.: 6.117 min  
 Delta R.T.: -0.003 min  
 Response: 3847633  
 Conc: 39.40 ng/ml



#33 AR-1260-3

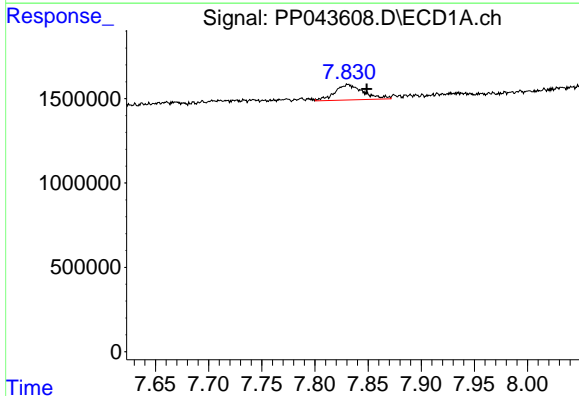
R.T.: 7.577 min  
 Delta R.T.: -0.024 min  
 Response: 600946  
 Conc: 8.29 ng/ml

Instrument :  
 ECD\_P  
 ClientSampleId :  
 AR1248CCC500



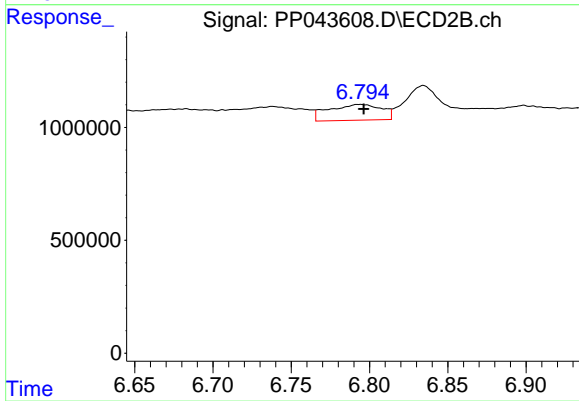
#33 AR-1260-3

R.T.: 6.279 min  
 Delta R.T.: -0.004 min  
 Response: 6876050  
 Conc: 75.32 ng/ml



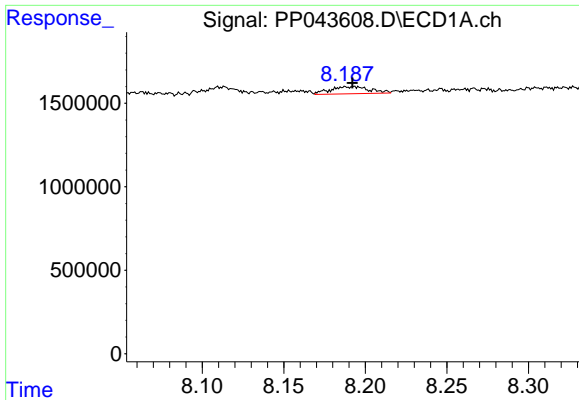
#34 AR-1260-4

R.T.: 7.831 min  
 Delta R.T.: -0.018 min  
 Response: 1691288  
 Conc: 19.70 ng/ml



#34 AR-1260-4

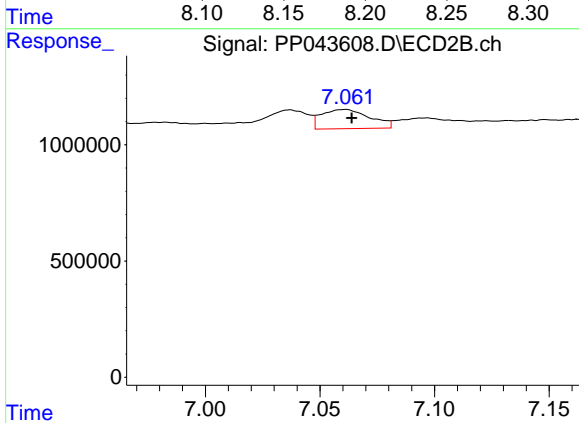
R.T.: 6.793 min  
 Delta R.T.: -0.003 min  
 Response: 1640259  
 Conc: 20.27 ng/ml



#35 AR-1260-5

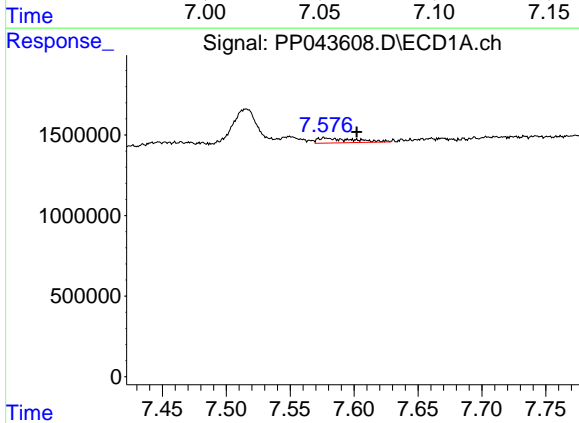
R.T.: 8.193 min  
 Delta R.T.: 0.001 min  
 Response: 722936  
 Conc: 4.66 ng/ml

Instrument :  
 ECD\_P  
 ClientSampleId :  
 AR1248CCC500



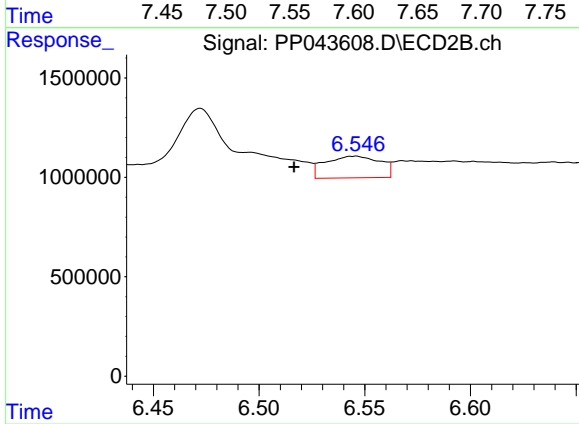
#35 AR-1260-5

R.T.: 7.061 min  
 Delta R.T.: -0.003 min  
 Response: 1209588  
 Conc: 6.54 ng/ml



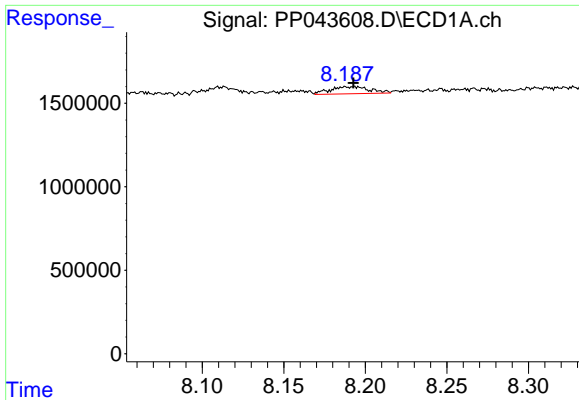
#36 AR-1262-1

R.T.: 7.577 min  
 Delta R.T.: -0.025 min  
 Response: 600946  
 Conc: 6.09 ng/ml



#36 AR-1262-1

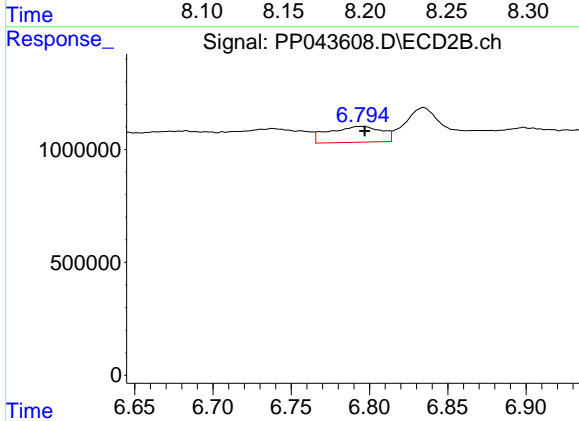
R.T.: 6.545 min  
 Delta R.T.: 0.029 min  
 Response: 1970280  
 Conc: 17.92 ng/ml



#37 AR-1262-2

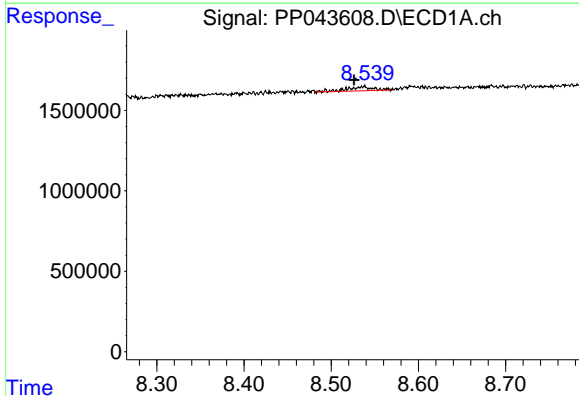
R.T.: 8.193 min  
 Delta R.T.: 0.000 min  
 Response: 722936  
 Conc: 4.48 ng/ml

Instrument :  
 ECD\_P  
 ClientSampleId :  
 AR1248CCC500



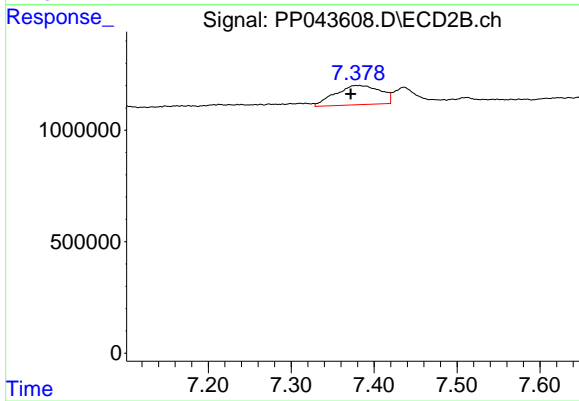
#37 AR-1262-2

R.T.: 6.793 min  
 Delta R.T.: -0.004 min  
 Response: 1640259  
 Conc: 16.08 ng/ml



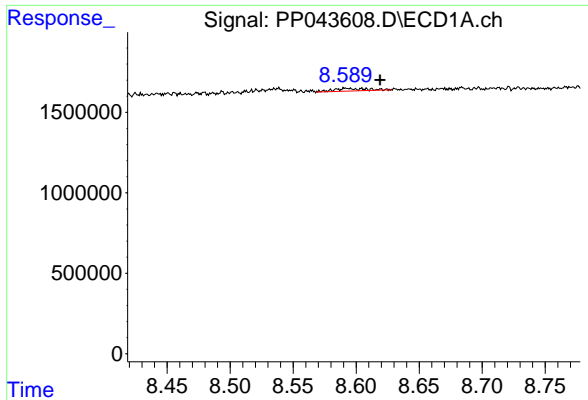
#38 AR-1262-3

R.T.: 8.536 min  
 Delta R.T.: 0.010 min  
 Response: 543476  
 Conc: 4.97 ng/ml



#38 AR-1262-3

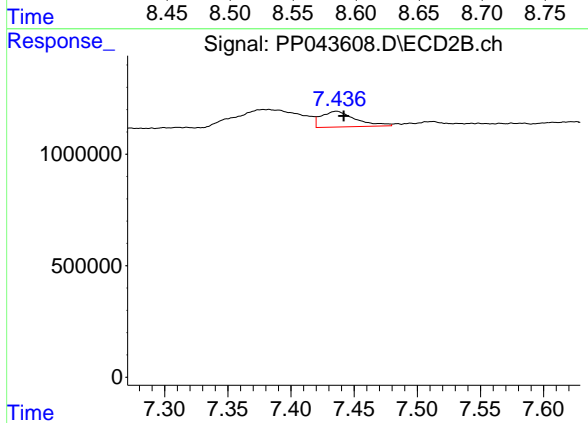
R.T.: 7.382 min  
 Delta R.T.: 0.011 min  
 Response: 3272576  
 Conc: 38.40 ng/ml



#39 AR-1262-4

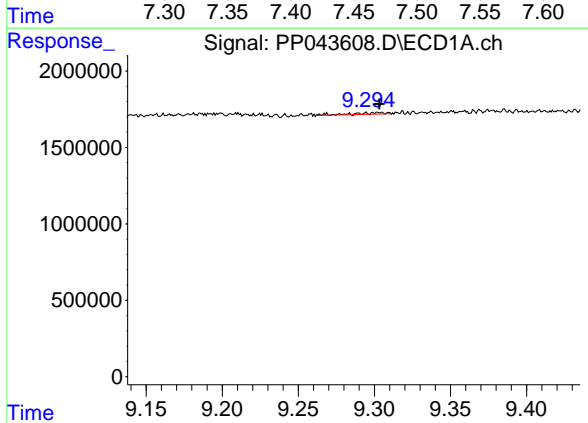
R.T.: 8.593 min  
 Delta R.T.: -0.026 min  
 Response: 290160  
 Conc: 6.05 ng/ml

Instrument :  
 ECD\_P  
 ClientSampleId :  
 AR1248CCC500



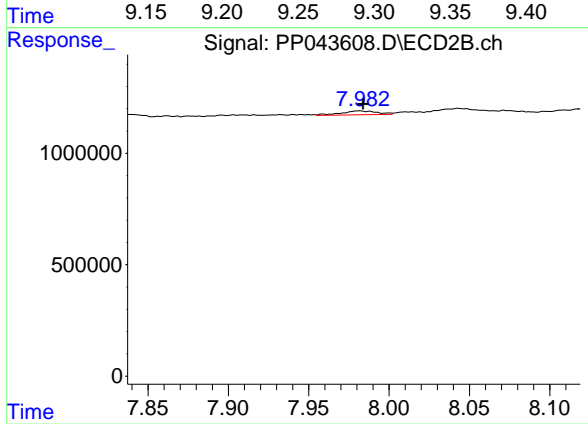
#39 AR-1262-4

R.T.: 7.436 min  
 Delta R.T.: -0.006 min  
 Response: 1331923  
 Conc: 8.58 ng/ml



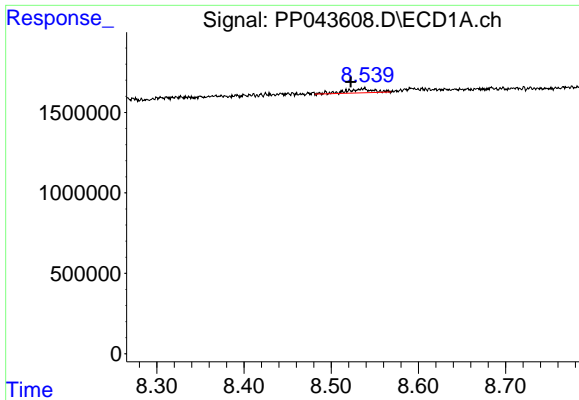
#40 AR-1262-5

R.T.: 9.304 min  
 Delta R.T.: 0.000 min  
 Response: 149260  
 Conc: 2.68 ng/ml



#40 AR-1262-5

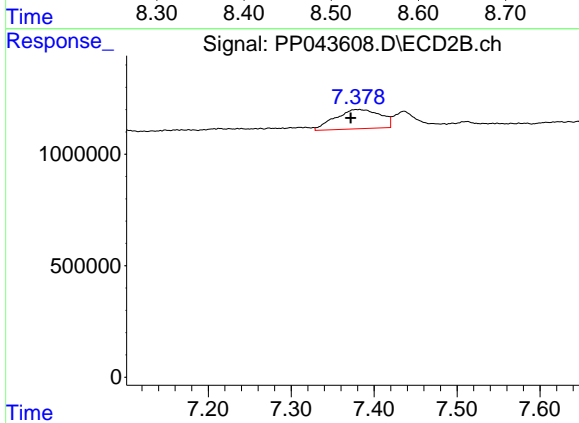
R.T.: 7.981 min  
 Delta R.T.: -0.002 min  
 Response: 270555  
 Conc: 3.48 ng/ml



#41 AR-1268-1

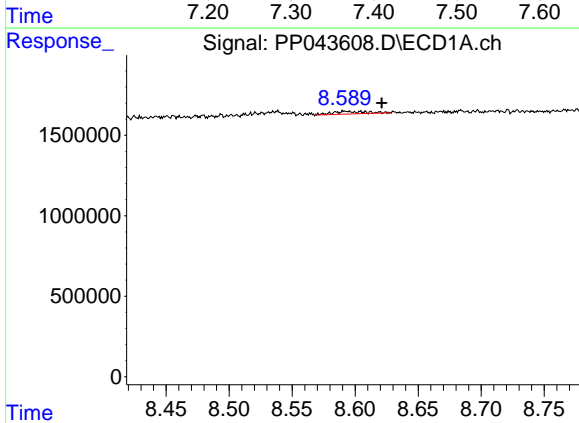
R.T.: 8.536 min  
 Delta R.T.: 0.014 min  
 Response: 543476  
 Conc: 2.79 ng/ml

Instrument :  
 ECD\_P  
 ClientSampleId :  
 AR1248CCC500



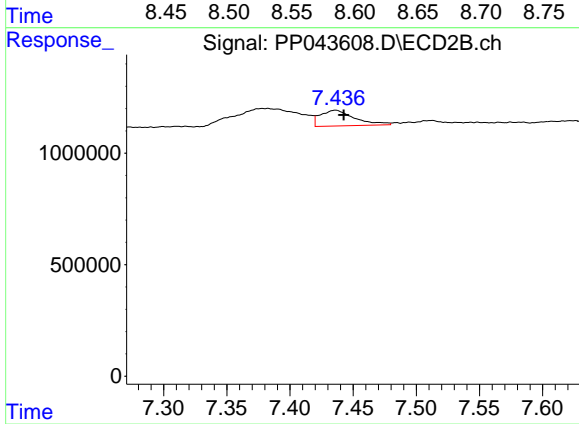
#41 AR-1268-1

R.T.: 7.382 min  
 Delta R.T.: 0.011 min  
 Response: 3272576  
 Conc: 12.92 ng/ml



#42 AR-1268-2

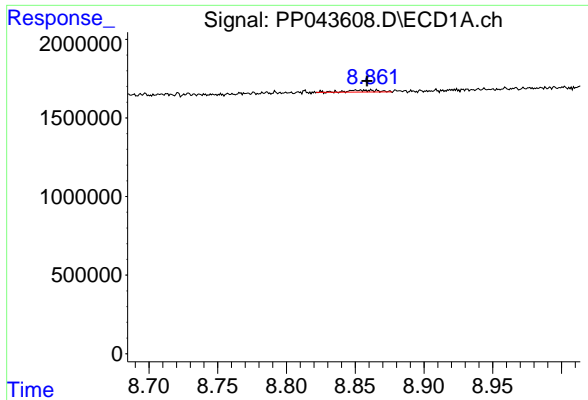
R.T.: 8.593 min  
 Delta R.T.: -0.028 min  
 Response: 290160  
 Conc: 1.66 ng/ml



#42 AR-1268-2

R.T.: 7.436 min  
 Delta R.T.: -0.007 min  
 Response: 1331923  
 Conc: 5.89 ng/ml

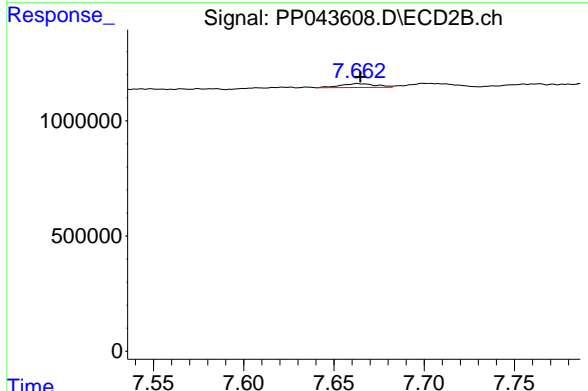




#43 AR-1268-3

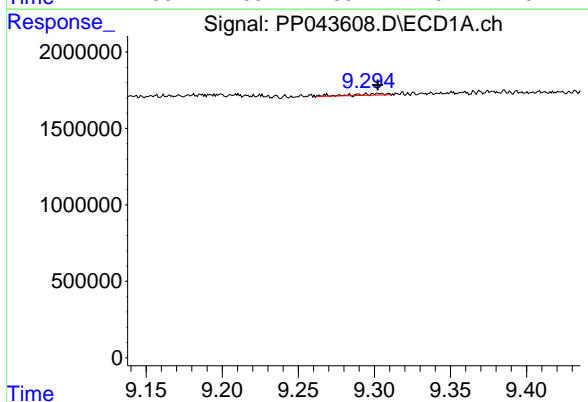
R.T.: 8.852 min  
 Delta R.T.: -0.006 min  
 Response: 188320  
 Conc: 1.22 ng/ml

Instrument :  
 ECD\_P  
 ClientSampleId :  
 AR1248CCC500



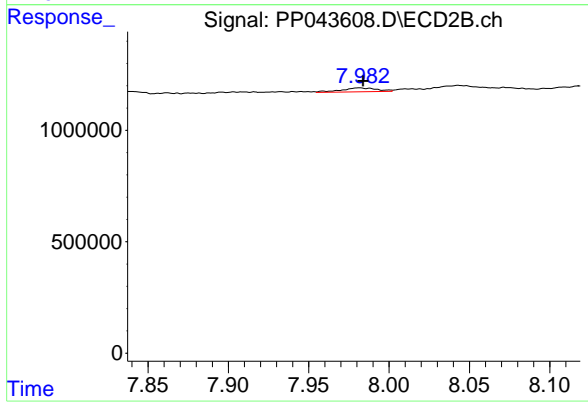
#43 AR-1268-3

R.T.: 7.663 min  
 Delta R.T.: -0.002 min  
 Response: 231927  
 Conc: 1.19 ng/ml



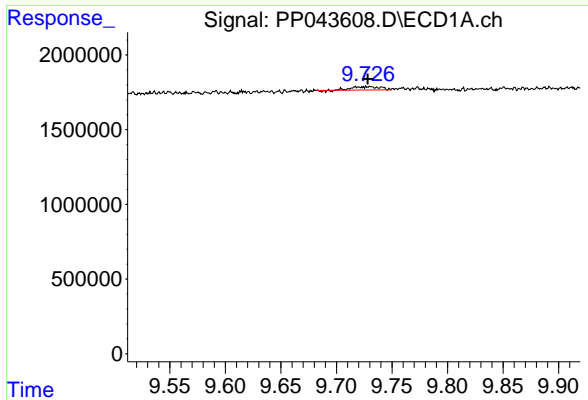
#44 AR-1268-4

R.T.: 9.304 min  
 Delta R.T.: 0.001 min  
 Response: 149260  
 Conc: 2.39 ng/ml



#44 AR-1268-4

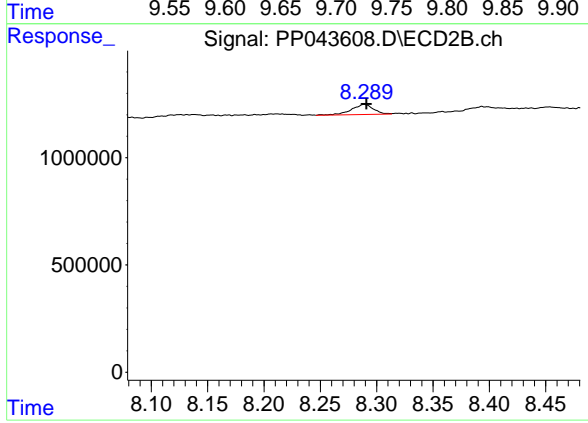
R.T.: 7.981 min  
 Delta R.T.: -0.002 min  
 Response: 270555  
 Conc: 3.01 ng/ml



#45 AR-1268-5

R.T.: 9.729 min  
 Delta R.T.: 0.000 min  
 Response: 362135  
 Conc: 0.80 ng/ml

Instrument :  
 ECD\_P  
 ClientSampleId :  
 AR1248CCC500



#45 AR-1268-5

R.T.: 8.289 min  
 Delta R.T.: -0.002 min  
 Response: 643069  
 Conc: 1.07 ng/ml