

Data Path : Z:\pestpcbsrv\HPCHEM1\ECD_P\Data\PP021122\
 Data File : PP043612.D
 Signal(s) : Signal #1: ECD1A.ch Signal #2: ECD2B.ch
 Acq On : 11 Feb 2022 16:17
 Operator : YP\AJ
 Sample : N1477-04
 Misc :
 ALS Vial : 18 Sample Multiplier: 1

Instrument :
 ECD_P
 ClientSampleId :
 20220088-AMENDED-BERKELEY-8-COMP

Integration File signal 1: autoint1.e
 Integration File signal 2: autoint2.e
 Quant Time: Feb 12 04:46:02 2022
 Quant Method : Z:\pestpcbsrv\HPCHEM1\ECD_P\methods\PP021022.M
 Quant Title : GC EXTRACTABLES
 QLast Update : Fri Feb 11 04:48:05 2022
 Response via : Initial Calibration
 Integrator: ChemStation

Volume Inj. : 2 µl
 Signal #1 Phase : ZB-MR1 Signal #2 Phase: ZB-MR2
 Signal #1 Info : 30Mx0.32mmx 0.50µ Signal #2 Info : 30M x 0.32mm x 0.25µm

Compound	RT#1	RT#2	Resp#1	Resp#2	ng/ml	ng/ml
System Monitoring Compounds						
1) SA Tetrachlo...	3.917	3.173	37603224	34928659	17.007	18.596
2) SA Decachlor...	10.069	8.554	18523895	25847988	15.594	15.932
Target Compounds						
3) L1 AR-1016-1	5.175	4.322	47014	40595	0.648	0.663
4) L1 AR-1016-2	5.193	4.343	88970	285337	0.844	3.377 #
5) L1 AR-1016-3	5.264	4.524	93062	50711	1.413	1.085
6) L1 AR-1016-4	5.370	4.575	41583	102518	0.767	2.743 #
7) L1 AR-1016-5	5.690	4.806	59091	103977	1.125	2.276 #
8) L2 AR-1221-1	4.148	3.407	120011	9455	4.714	0.396 #
9) L2 AR-1221-2	4.242	3.486	497967	710893	25.938	39.363 #
10) L2 AR-1221-3	4.316	3.568	100891	78422	1.756	1.520
11) L3 AR-1232-1	4.316	3.568	100891	78422	2.079	1.823
12) L3 AR-1232-2	4.889	4.343	63809	285337	2.693	7.993 #
13) L3 AR-1232-3	5.193	4.524	88970	50711	2.066	2.593 #
14) L3 AR-1232-4	5.370	4.616	41583	116735	1.905	6.751 #
15) L3 AR-1232-5	5.474	4.806	201130	103977	12.470	5.535 #
16) L4 AR-1242-1	5.175	4.322	47014	40595	0.837	0.833
17) L4 AR-1242-2	5.193	4.343	88970	285337	1.075	4.238 #
18) L4 AR-1242-3	5.264	4.524	93062	50711	1.798	1.351
19) L4 AR-1242-4	5.370	4.616	41583	116735	0.974	3.233 #
20) L4 AR-1242-5	6.171	5.176	191660	285229	4.438	6.626 #
21) L5 AR-1248-1	5.175	4.322	47014	40595	1.147	1.090
22) L5 AR-1248-2	5.474	4.575	201130	102518	3.540	2.096 #
23) L5 AR-1248-3	5.690	4.616	59091	116735	0.886	2.275 #
24) L5 AR-1248-4	6.136	4.806	136624	103977	1.955	1.774
25) L5 AR-1248-5	6.171	5.216	191660	259035	2.772	4.521 #
26) L6 AR-1254-1	6.091	5.176	196637	285229	2.603	3.266 #
27) L6 AR-1254-2	6.342	5.335	250332	318840	2.232	4.180 #
28) L6 AR-1254-3	6.737	5.775	721930	121628	6.239	0.992 #
29) L6 AR-1254-4	7.042	6.014	276434	74904	3.463	0.949 #
30) L6 AR-1254-5	0.000	6.470	0	94184	N.D.	0.814 #
31) L7 AR-1260-1	6.934	5.905	244242	697343	2.917	8.720 #
32) L7 AR-1260-2	7.216	6.123	83469	481762	0.922	4.933 #
33) L7 AR-1260-3	7.595	6.286	73025	19783	1.007	0.217 #
34) L7 AR-1260-4	7.845	6.793	607837	202546	7.080	2.503 #
35) L7 AR-1260-5	8.194	7.067	88820	22282	0.573	0.121 #
36) L8 AR-1262-1	7.595	6.514	73025	39584	0.740	0.360 #
37) L8 AR-1262-2	8.194	6.793	88820	202546	0.550	1.986 #
38) L8 AR-1262-3	0.000	7.379	0	244095	N.D.	2.864 #
39) L8 AR-1262-4	8.637f	7.442	126564	49202	2.639	0.317 #
40) L8 AR-1262-5	0.000	7.980	0	56344	N.D.	0.724 #
41) L9 AR-1268-1	0.000	7.379	0	244095	N.D.	0.963 #

Data Path : Z:\pestpcbsrv\HPCHEM1\ECD_P\Data\PP021122\
 Data File : PP043612.D
 Signal(s) : Signal #1: ECD1A.ch Signal #2: ECD2B.ch
 Acq On : 11 Feb 2022 16:17
 Operator : YP\AJ
 Sample : N1477-04
 Misc :
 ALS Vial : 18 Sample Multiplier: 1

Instrument :
 ECD_P
ClientSampleId :
 20220088-AMENDED-BERKELEY-8-COMP

Integration File signal 1: autoint1.e
 Integration File signal 2: autoint2.e
 Quant Time: Feb 12 04:46:02 2022
 Quant Method : Z:\pestpcbsrv\HPCHEM1\ECD_P\methods\PP021022.M
 Quant Title : GC EXTRACTABLES
 QLast Update : Fri Feb 11 04:48:05 2022
 Response via : Initial Calibration
 Integrator: ChemStation

Volume Inj. : 2 µl
 Signal #1 Phase : ZB-MR1 Signal #2 Phase: ZB-MR2
 Signal #1 Info : 30Mx0.32mmx 0.50µ Signal #2 Info : 30M x 0.32mm x 0.25µm

	Compound	RT#1	RT#2	Resp#1	Resp#2	ng/ml	ng/ml
42)	L9 AR-1268-2	8.637f	7.442	126564	49202	0.723	0.218 #
43)	L9 AR-1268-3	0.000	7.663	0	113425	N.D.	0.582 #
44)	L9 AR-1268-4	0.000	7.980	0	56344	N.D.	0.627 #

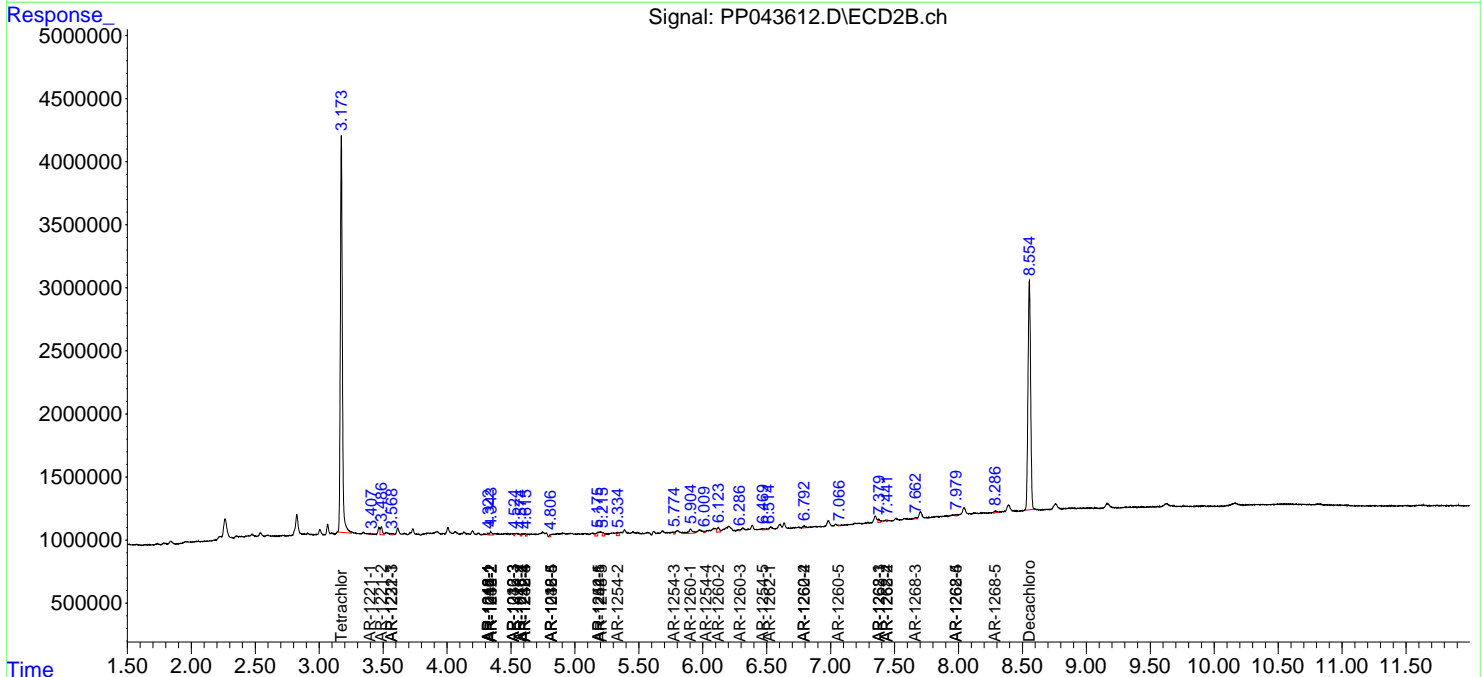
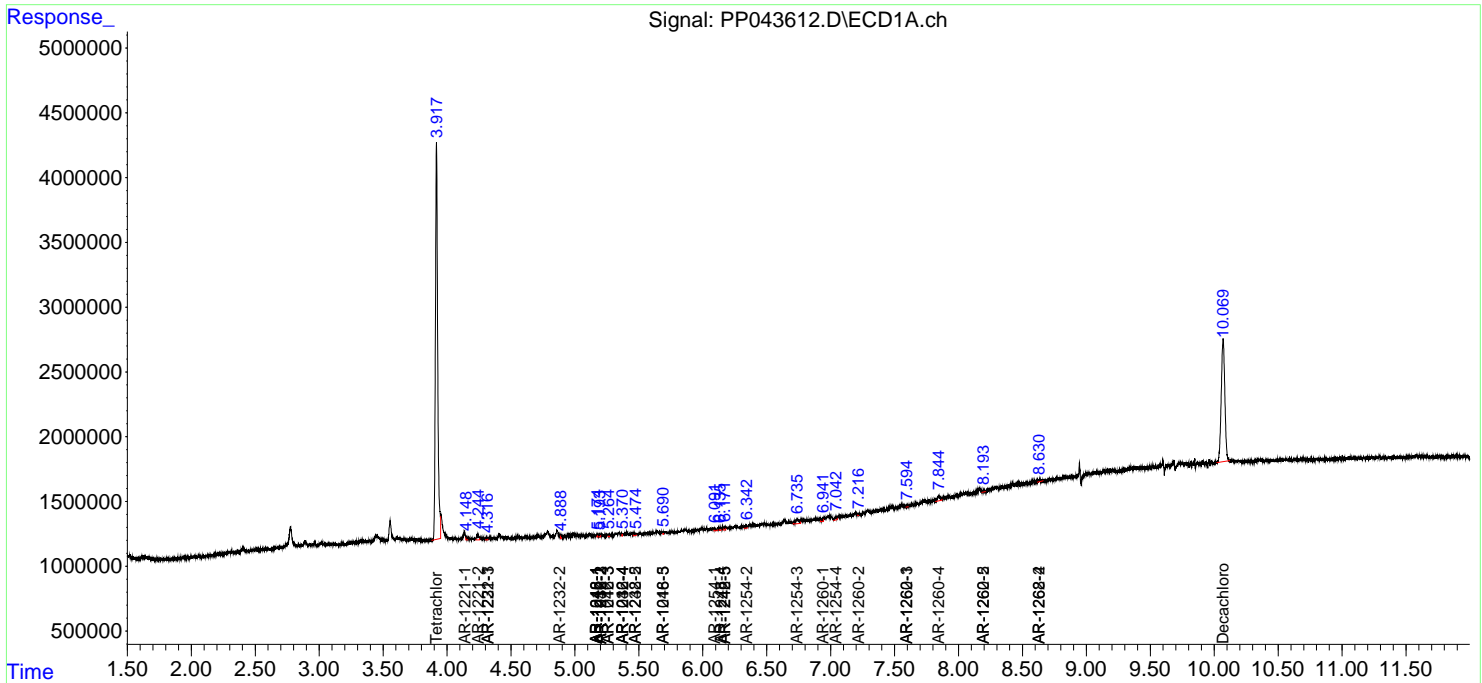
(f)=RT Delta > 1/2 Window (#)=Amounts differ by > 25% (m)=manual int.

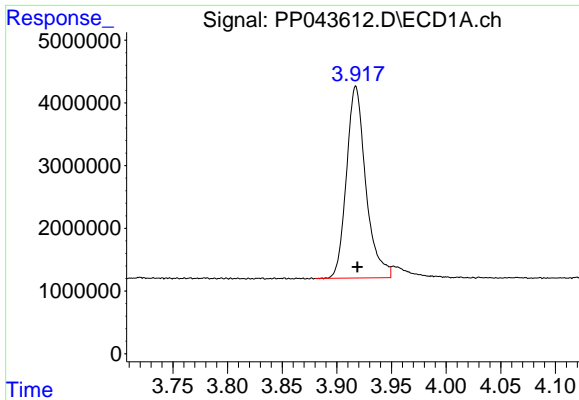
Data Path : Z:\pestpcbsrv\HPCHEM1\ECD_P\Data\PP021122\
 Data File : PP043612.D
 Signal(s) : Signal #1: ECD1A.ch Signal #2: ECD2B.ch
 Acq On : 11 Feb 2022 16:17
 Operator : YP\AJ
 Sample : N1477-04
 Misc :
 ALS Vial : 18 Sample Multiplier: 1

Instrument :
 ECD_P
ClientSampleId :
 20220088-AMENDED-BERKELEY-8-COMP

Integration File signal 1: autoint1.e
 Integration File signal 2: autoint2.e
 Quant Time: Feb 12 04:46:02 2022
 Quant Method : Z:\pestpcbsrv\HPCHEM1\ECD_P\methods\PP021022.M
 Quant Title : GC EXTRACTABLES
 QLast Update : Fri Feb 11 04:48:05 2022
 Response via : Initial Calibration
 Integrator: ChemStation

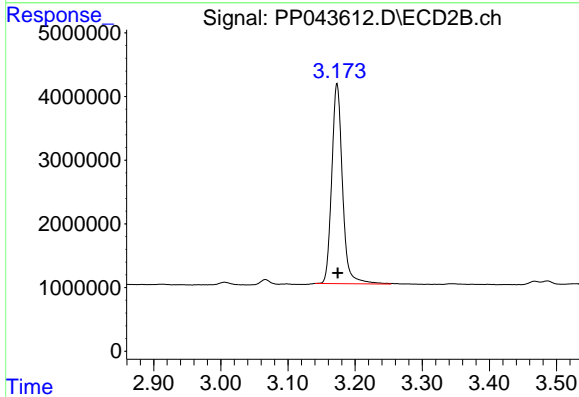
Volume Inj. : 2 µl
 Signal #1 Phase : ZB-MR1 Signal #2 Phase: ZB-MR2
 Signal #1 Info : 30Mx0.32mmx 0.50µ Signal #2 Info : 30M x 0.32mm x 0.25µm



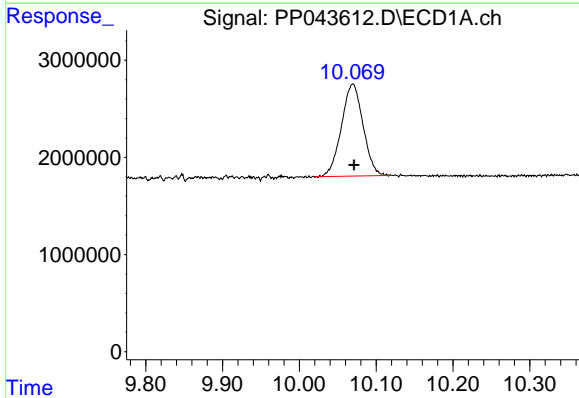


#1 Tetrachloro-m-xylene
 R.T.: 3.917 min
 Delta R.T.: -0.002 min
 Response: 37603224
 Conc: 17.01 ng/ml

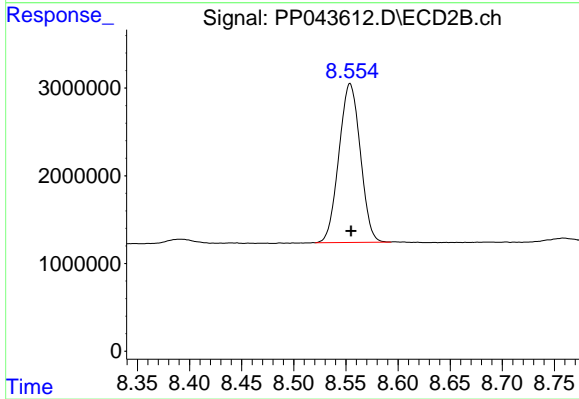
Instrument : ECD_P
 ClientSampleId : 20220088-AMENDED-BERKELEY-8-COMP



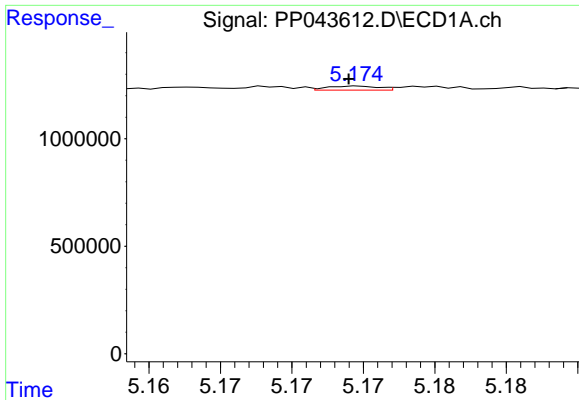
#1 Tetrachloro-m-xylene
 R.T.: 3.173 min
 Delta R.T.: -0.001 min
 Response: 34928659
 Conc: 18.60 ng/ml



#2 Decachlorobiphenyl
 R.T.: 10.069 min
 Delta R.T.: -0.002 min
 Response: 18523895
 Conc: 15.59 ng/ml



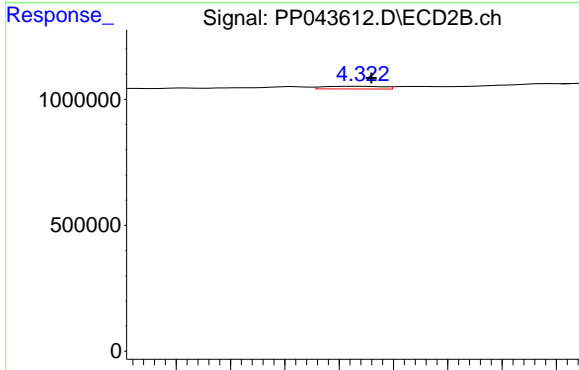
#2 Decachlorobiphenyl
 R.T.: 8.554 min
 Delta R.T.: 0.000 min
 Response: 25847988
 Conc: 15.93 ng/ml



#3 AR-1016-1

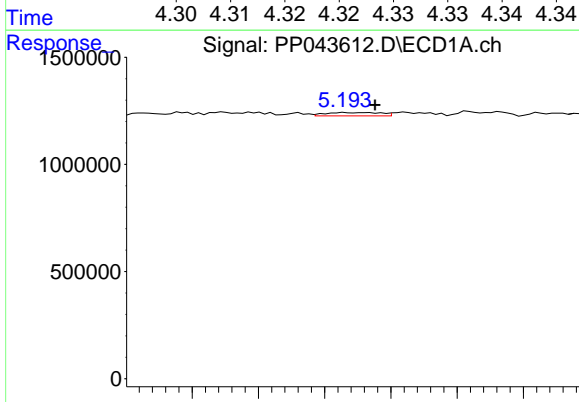
R.T.: 5.175 min
 Delta R.T.: 0.000 min
 Response: 47014
 Conc: 0.65 ng/ml

Instrument : ECD_P
 ClientSampleId : 20220088-AMENDED-BERKELEY-8-COMP



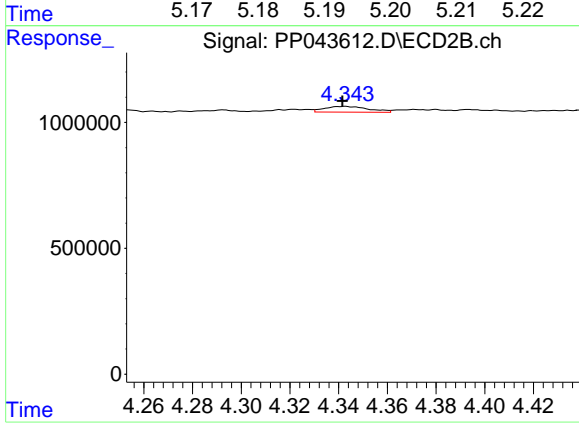
#3 AR-1016-1

R.T.: 4.322 min
 Delta R.T.: -0.001 min
 Response: 40595
 Conc: 0.66 ng/ml



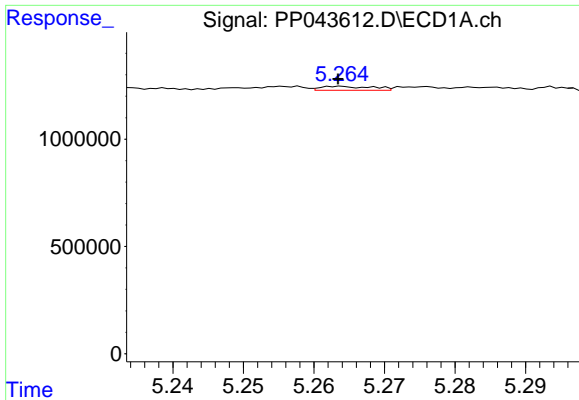
#4 AR-1016-2

R.T.: 5.193 min
 Delta R.T.: -0.004 min
 Response: 88970
 Conc: 0.84 ng/ml



#4 AR-1016-2

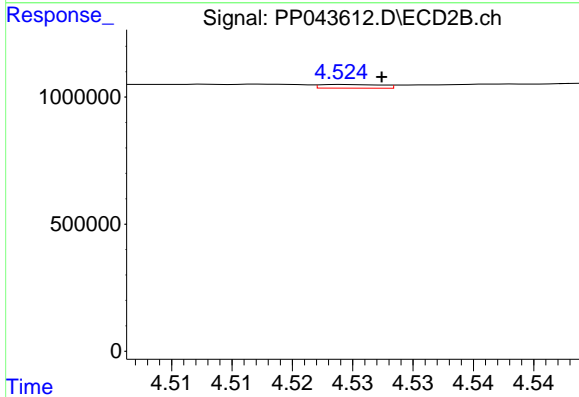
R.T.: 4.343 min
 Delta R.T.: 0.001 min
 Response: 285337
 Conc: 3.38 ng/ml



#5 AR-1016-3

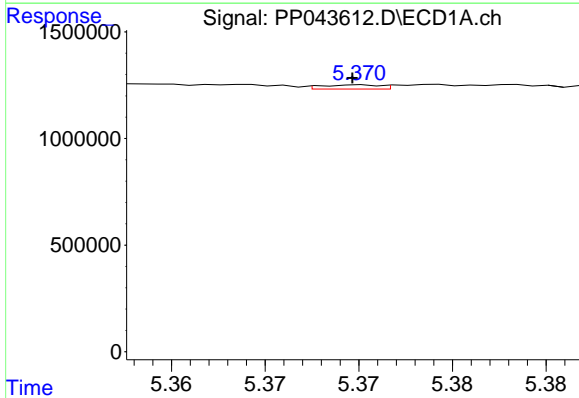
R.T.: 5.264 min
 Delta R.T.: 0.000 min
 Response: 93062
 Conc: 1.41 ng/ml

Instrument : ECD_P
 ClientSampleId : 20220088-AMENDED-BERKELEY-8-COMP



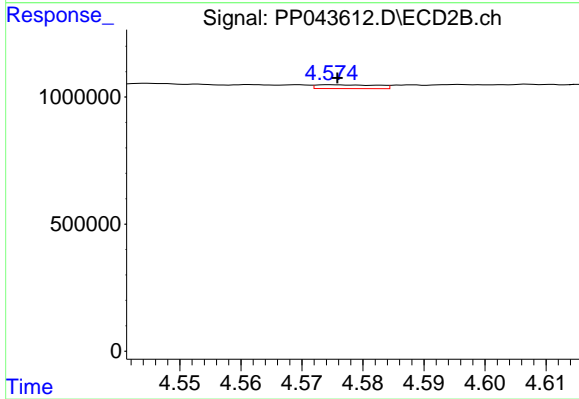
#5 AR-1016-3

R.T.: 4.524 min
 Delta R.T.: -0.003 min
 Response: 50711
 Conc: 1.09 ng/ml



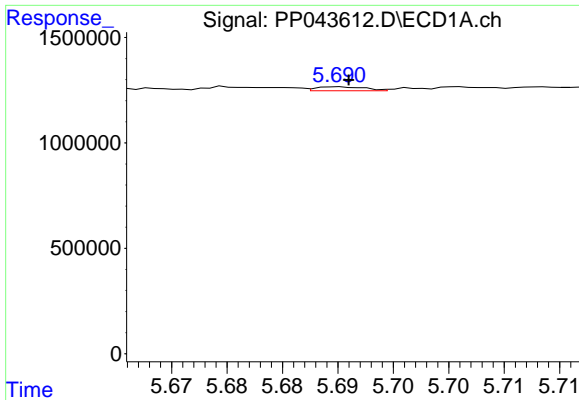
#6 AR-1016-4

R.T.: 5.370 min
 Delta R.T.: 0.000 min
 Response: 41583
 Conc: 0.77 ng/ml



#6 AR-1016-4

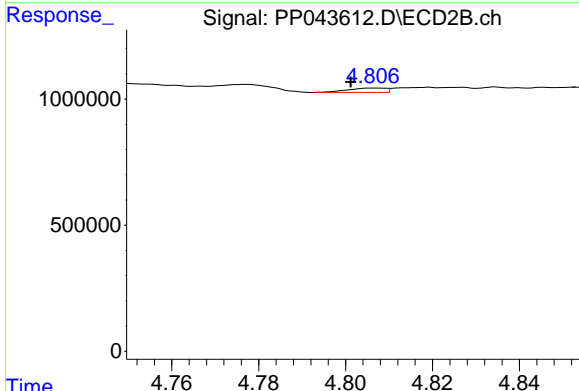
R.T.: 4.575 min
 Delta R.T.: -0.001 min
 Response: 102518
 Conc: 2.74 ng/ml



#7 AR-1016-5

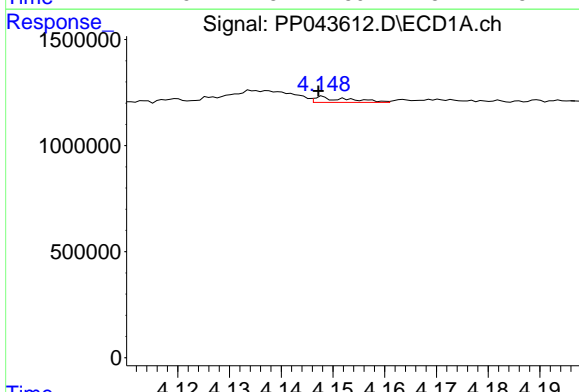
R.T.: 5.690 min
 Delta R.T.: 0.000 min
 Response: 59091
 Conc: 1.12 ng/ml

Instrument : ECD_P
 ClientSampleId : 20220088-AMENDED-BERKELEY-8-COMP



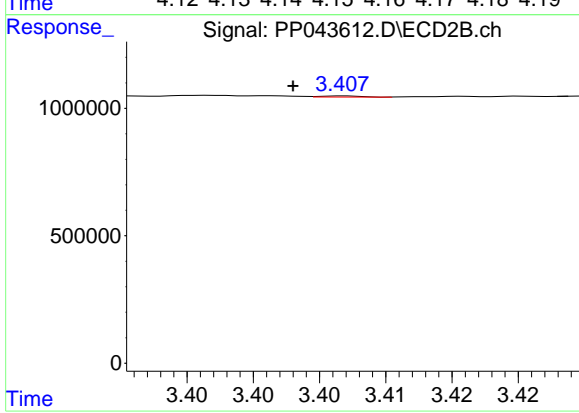
#7 AR-1016-5

R.T.: 4.806 min
 Delta R.T.: 0.005 min
 Response: 103977
 Conc: 2.28 ng/ml



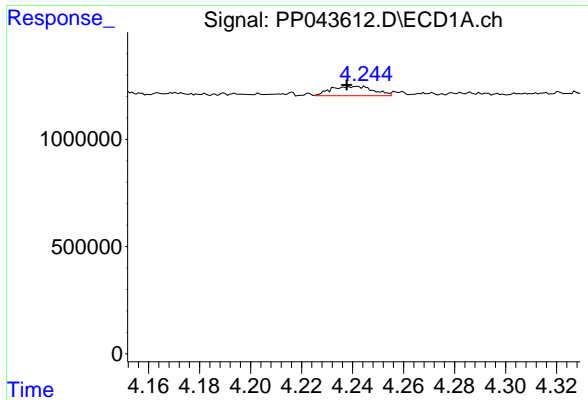
#8 AR-1221-1

R.T.: 4.148 min
 Delta R.T.: 0.000 min
 Response: 120011
 Conc: 4.71 ng/ml



#8 AR-1221-1

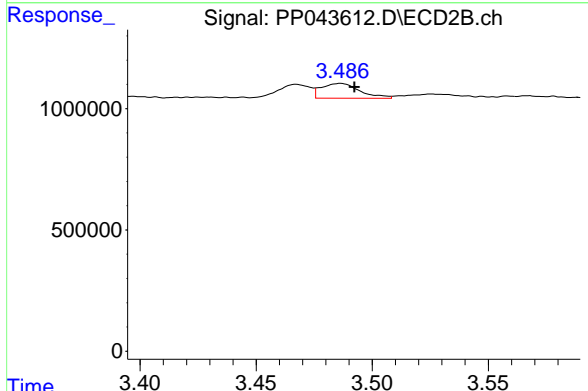
R.T.: 3.407 min
 Delta R.T.: 0.004 min
 Response: 9455
 Conc: 0.40 ng/ml



#9 AR-1221-2

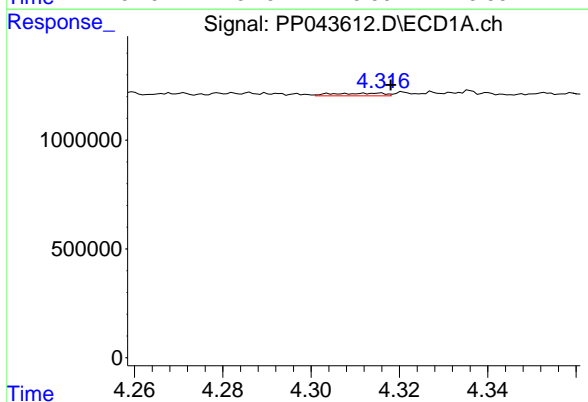
R.T.: 4.242 min
 Delta R.T.: 0.004 min
 Response: 497967
 Conc: 25.94 ng/ml

Instrument :
 ECD_P
 ClientSampleId :
 20220088-AMENDED-BERKELEY-8-COMP



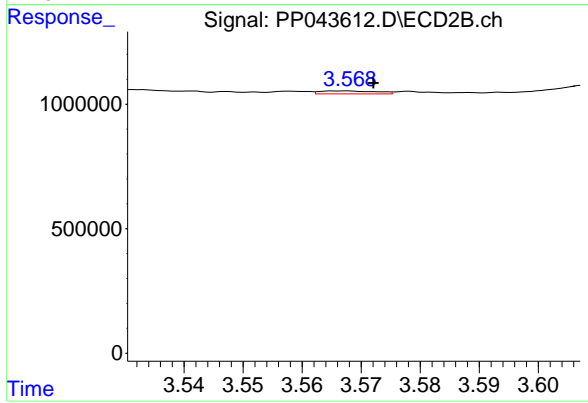
#9 AR-1221-2

R.T.: 3.486 min
 Delta R.T.: -0.006 min
 Response: 710893
 Conc: 39.36 ng/ml



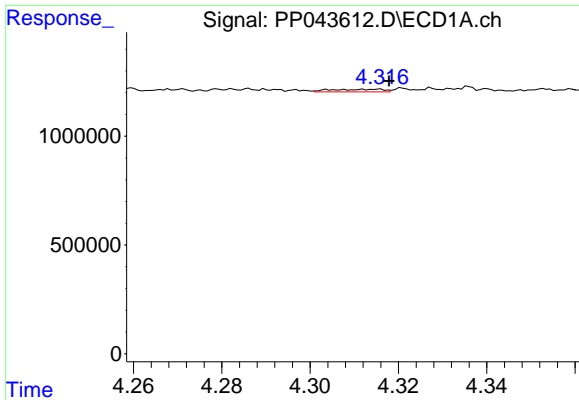
#10 AR-1221-3

R.T.: 4.316 min
 Delta R.T.: -0.002 min
 Response: 100891
 Conc: 1.76 ng/ml



#10 AR-1221-3

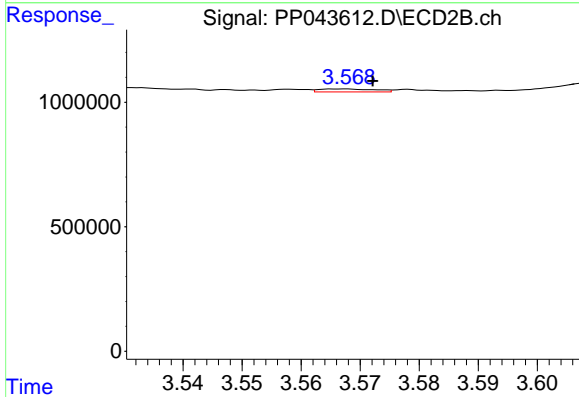
R.T.: 3.568 min
 Delta R.T.: -0.005 min
 Response: 78422
 Conc: 1.52 ng/ml



#11 AR-1232-1

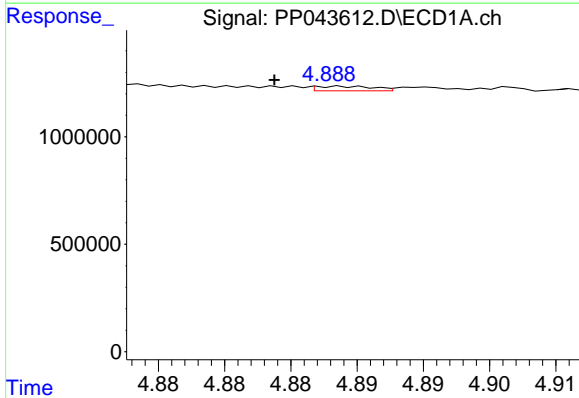
R.T.: 4.316 min
 Delta R.T.: -0.002 min
 Response: 100891
 Conc: 2.08 ng/ml

Instrument : ECD_P
 ClientSampleId : 20220088-AMENDED-BERKELEY-8-COMP



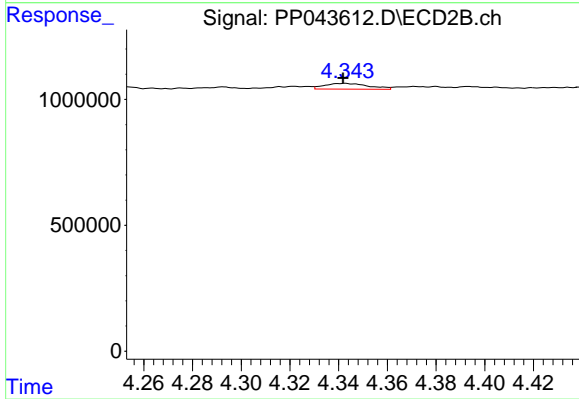
#11 AR-1232-1

R.T.: 3.568 min
 Delta R.T.: -0.005 min
 Response: 78422
 Conc: 1.82 ng/ml



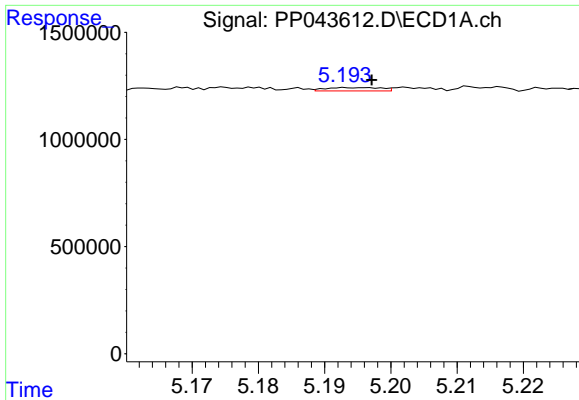
#12 AR-1232-2

R.T.: 4.889 min
 Delta R.T.: 0.005 min
 Response: 63809
 Conc: 2.69 ng/ml



#12 AR-1232-2

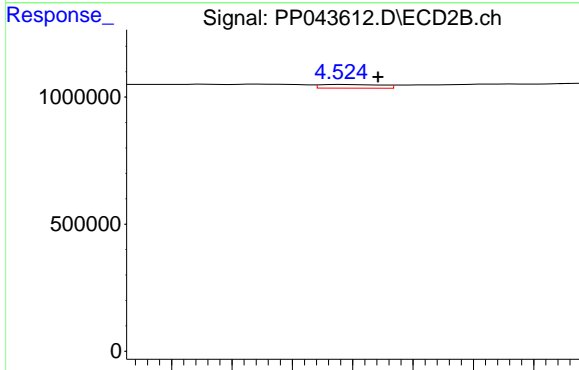
R.T.: 4.343 min
 Delta R.T.: 0.001 min
 Response: 285337
 Conc: 7.99 ng/ml



#13 AR-1232-3

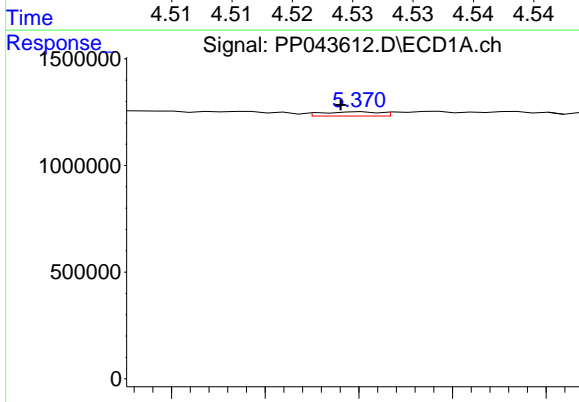
R.T.: 5.193 min
 Delta R.T.: -0.004 min
 Response: 88970
 Conc: 2.07 ng/ml

Instrument :
 ECD_P
 ClientSampleId :
 20220088-AMENDED-BERKELEY-8-COMP



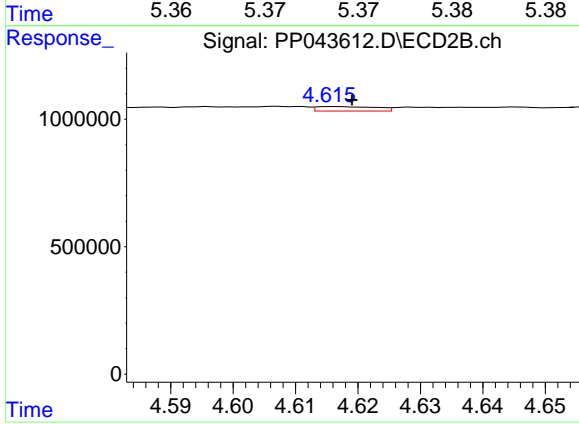
#13 AR-1232-3

R.T.: 4.524 min
 Delta R.T.: -0.003 min
 Response: 50711
 Conc: 2.59 ng/ml



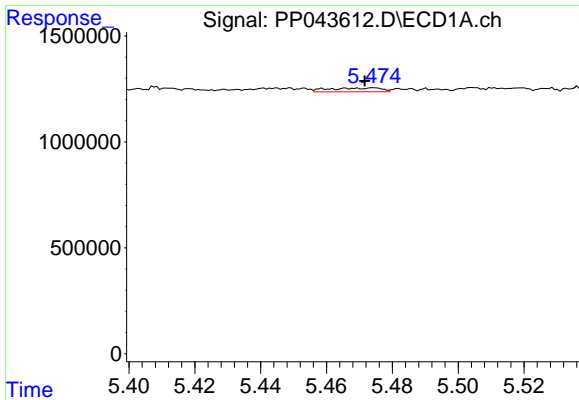
#14 AR-1232-4

R.T.: 5.370 min
 Delta R.T.: 0.001 min
 Response: 41583
 Conc: 1.91 ng/ml



#14 AR-1232-4

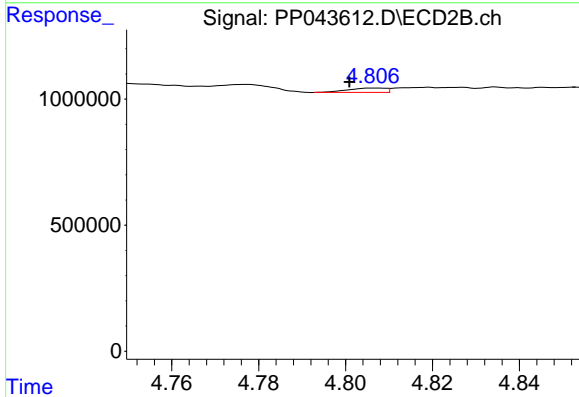
R.T.: 4.616 min
 Delta R.T.: -0.003 min
 Response: 116735
 Conc: 6.75 ng/ml



#15 AR-1232-5

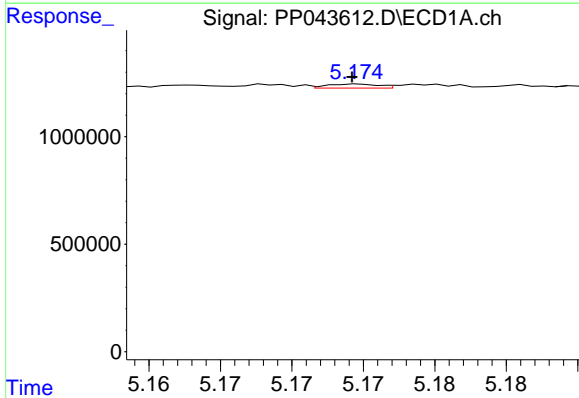
R.T.: 5.474 min
 Delta R.T.: 0.003 min
 Response: 201130
 Conc: 12.47 ng/ml

Instrument : ECD_P
 ClientSampleId : 20220088-AMENDED-BERKELEY-8-COMP



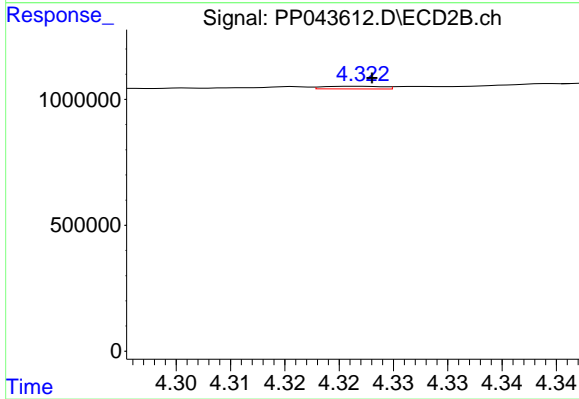
#15 AR-1232-5

R.T.: 4.806 min
 Delta R.T.: 0.005 min
 Response: 103977
 Conc: 5.54 ng/ml



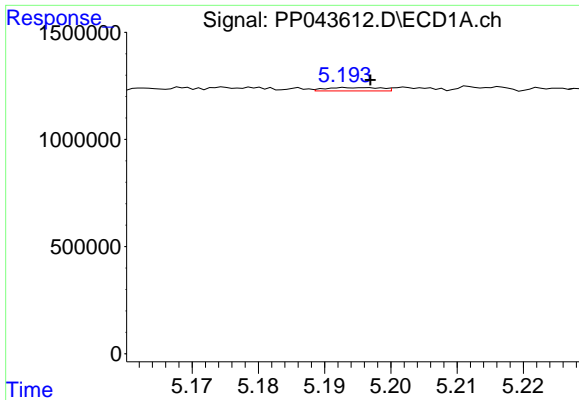
#16 AR-1242-1

R.T.: 5.175 min
 Delta R.T.: 0.000 min
 Response: 47014
 Conc: 0.84 ng/ml



#16 AR-1242-1

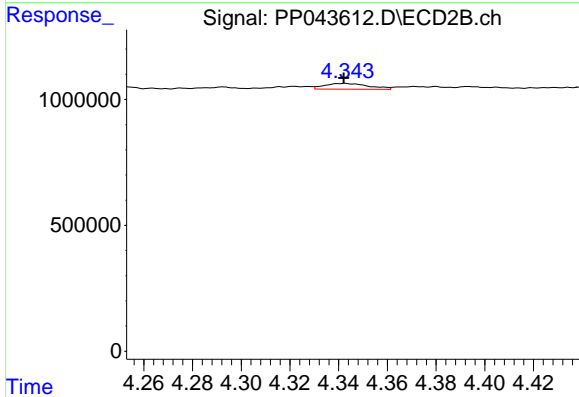
R.T.: 4.322 min
 Delta R.T.: -0.001 min
 Response: 40595
 Conc: 0.83 ng/ml



#17 AR-1242-2

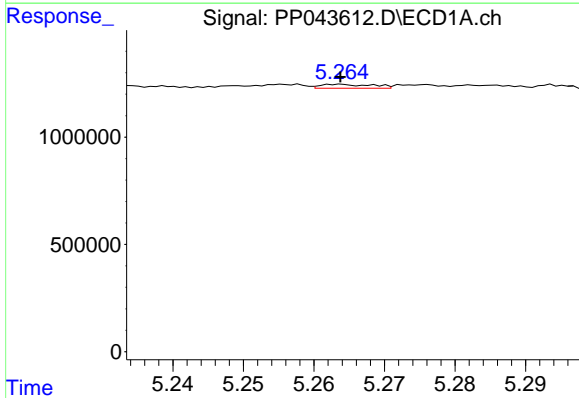
R.T.: 5.193 min
 Delta R.T.: -0.004 min
 Response: 88970
 Conc: 1.08 ng/ml

Instrument :
 ECD_P
ClientSampleId :
 20220088-AMENDED-BERKELEY-8-COMP



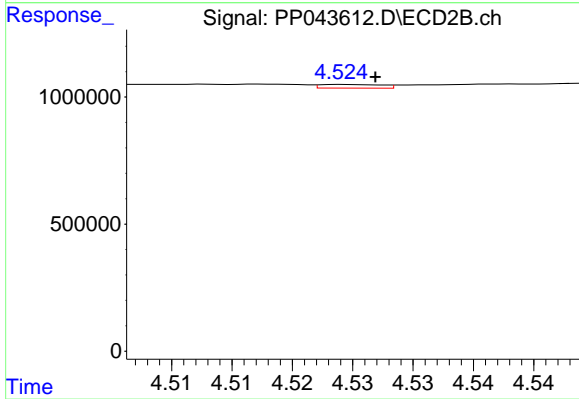
#17 AR-1242-2

R.T.: 4.343 min
 Delta R.T.: 0.000 min
 Response: 285337
 Conc: 4.24 ng/ml



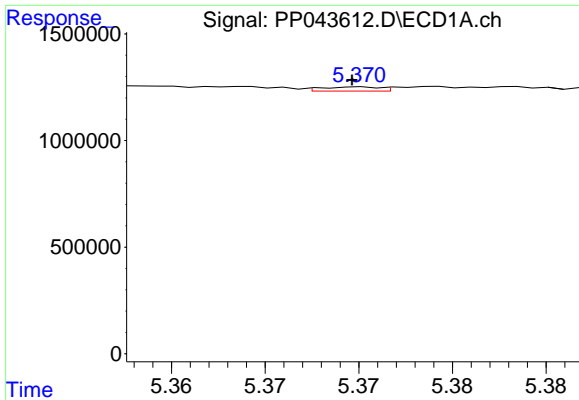
#18 AR-1242-3

R.T.: 5.264 min
 Delta R.T.: 0.000 min
 Response: 93062
 Conc: 1.80 ng/ml



#18 AR-1242-3

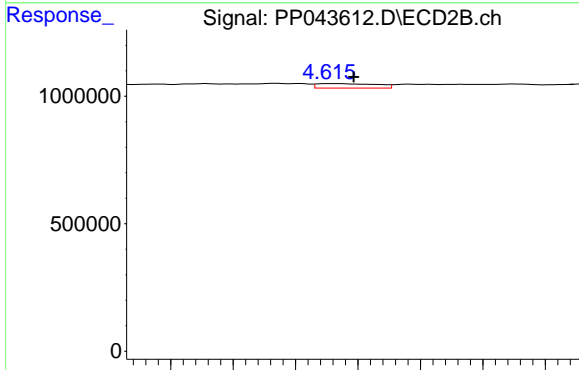
R.T.: 4.524 min
 Delta R.T.: -0.003 min
 Response: 50711
 Conc: 1.35 ng/ml



#19 AR-1242-4

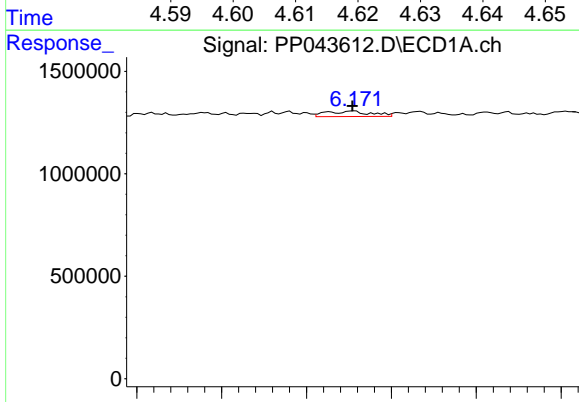
R.T.: 5.370 min
 Delta R.T.: 0.000 min
 Response: 41583
 Conc: 0.97 ng/ml

Instrument :
 ECD_P
ClientSampleId :
 20220088-AMENDED-BERKELEY-8-COMP



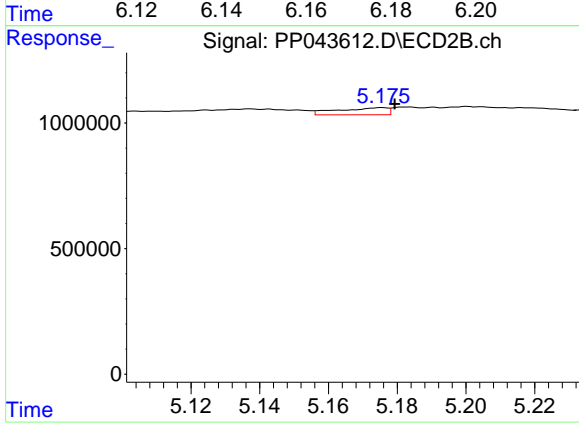
#19 AR-1242-4

R.T.: 4.616 min
 Delta R.T.: -0.003 min
 Response: 116735
 Conc: 3.23 ng/ml



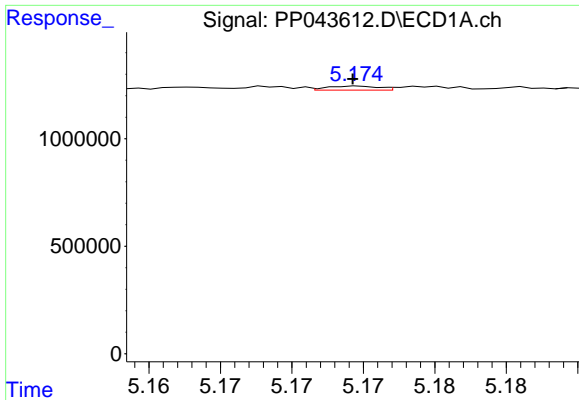
#20 AR-1242-5

R.T.: 6.171 min
 Delta R.T.: 0.000 min
 Response: 191660
 Conc: 4.44 ng/ml



#20 AR-1242-5

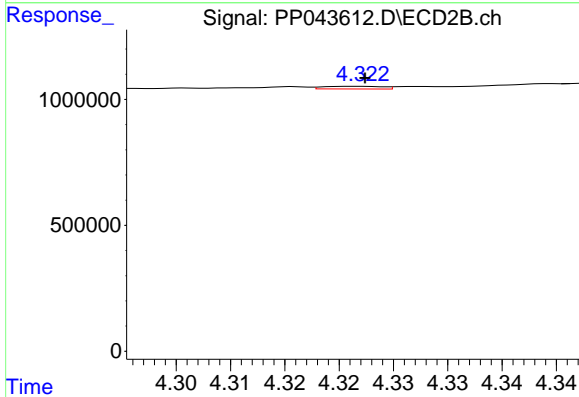
R.T.: 5.176 min
 Delta R.T.: -0.004 min
 Response: 285229
 Conc: 6.63 ng/ml



#21 AR-1248-1

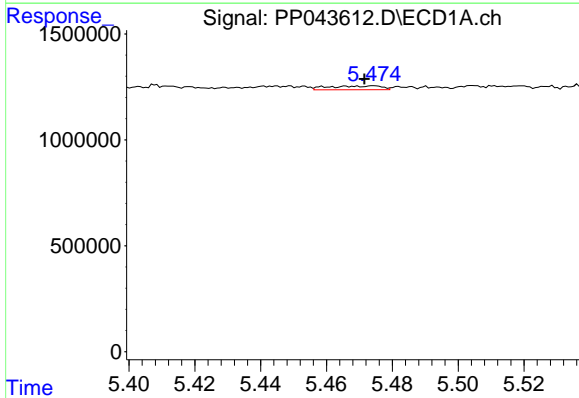
R.T.: 5.175 min
 Delta R.T.: 0.000 min
 Response: 47014
 Conc: 1.15 ng/ml

Instrument : ECD_P
 ClientSampleId : 20220088-AMENDED-BERKELEY-8-COMP



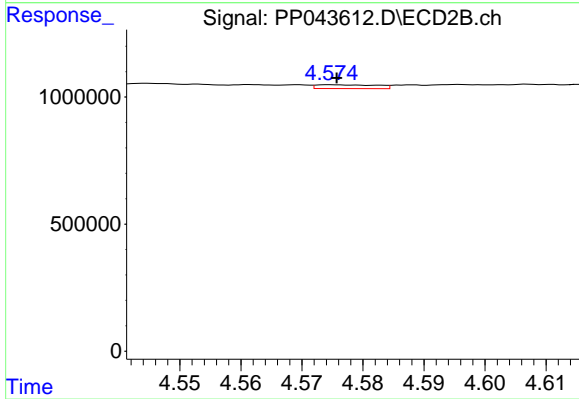
#21 AR-1248-1

R.T.: 4.322 min
 Delta R.T.: 0.000 min
 Response: 40595
 Conc: 1.09 ng/ml



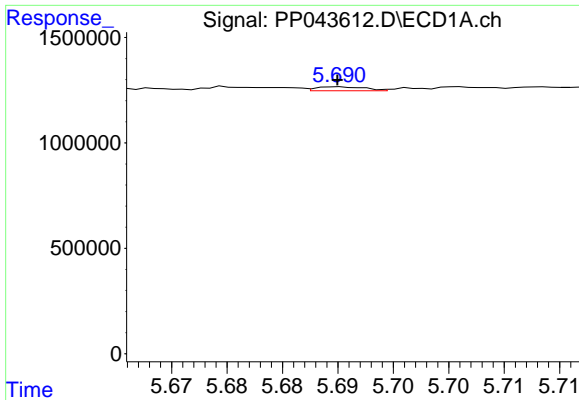
#22 AR-1248-2

R.T.: 5.474 min
 Delta R.T.: 0.003 min
 Response: 201130
 Conc: 3.54 ng/ml



#22 AR-1248-2

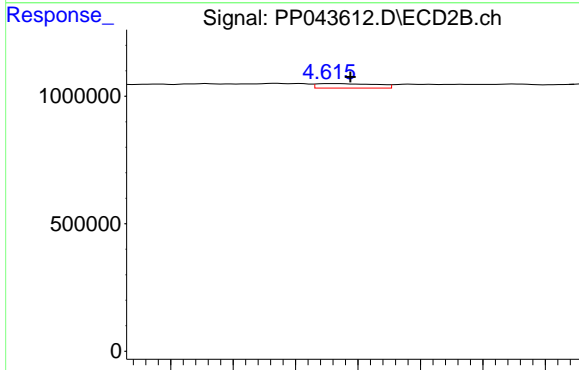
R.T.: 4.575 min
 Delta R.T.: 0.000 min
 Response: 102518
 Conc: 2.10 ng/ml



#23 AR-1248-3

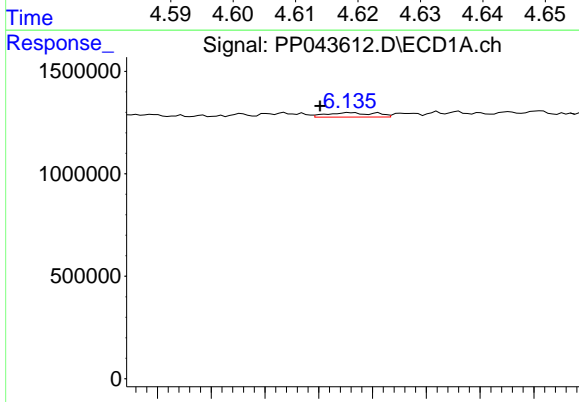
R.T.: 5.690 min
 Delta R.T.: 0.000 min
 Response: 59091
 Conc: 0.89 ng/ml

Instrument : ECD_P
 ClientSampleId : 20220088-AMENDED-BERKELEY-8-COMP



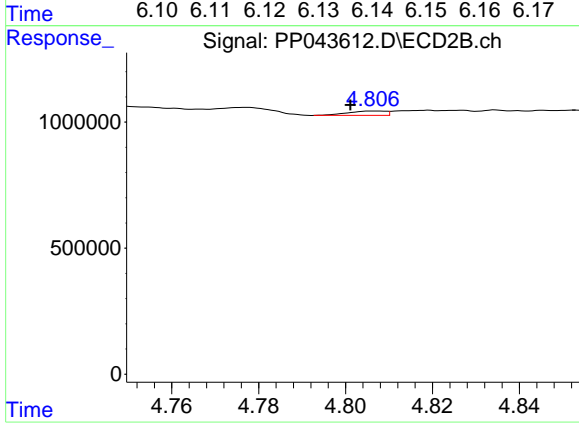
#23 AR-1248-3

R.T.: 4.616 min
 Delta R.T.: -0.003 min
 Response: 116735
 Conc: 2.27 ng/ml



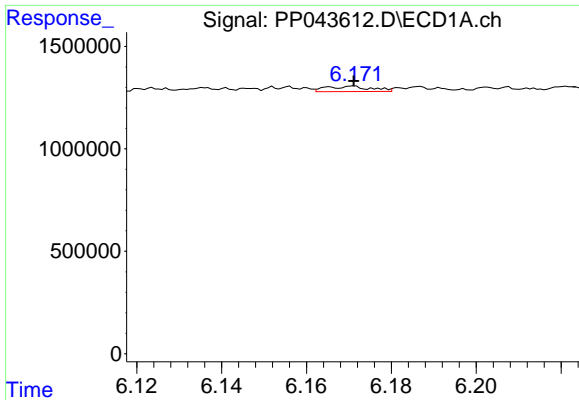
#24 AR-1248-4

R.T.: 6.136 min
 Delta R.T.: 0.006 min
 Response: 136624
 Conc: 1.96 ng/ml



#24 AR-1248-4

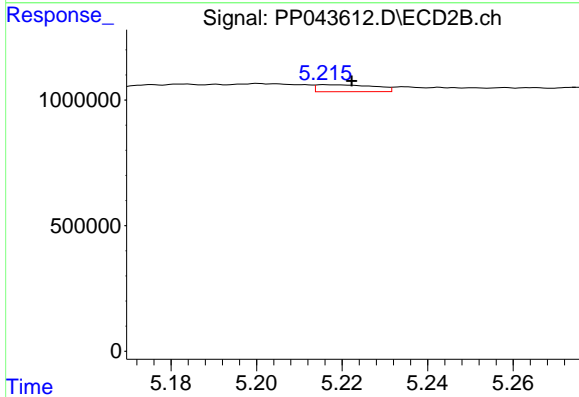
R.T.: 4.806 min
 Delta R.T.: 0.005 min
 Response: 103977
 Conc: 1.77 ng/ml



#25 AR-1248-5

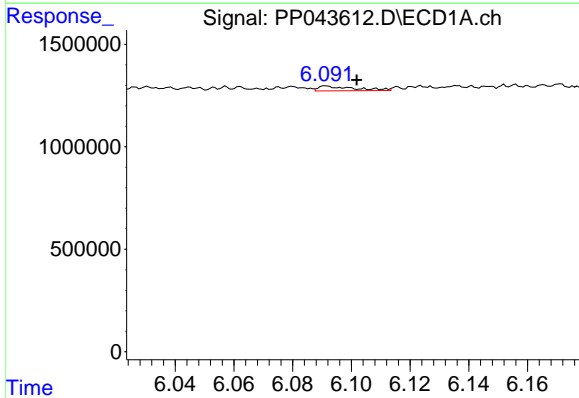
R.T.: 6.171 min
 Delta R.T.: 0.000 min
 Response: 191660
 Conc: 2.77 ng/ml

Instrument :
 ECD_P
 ClientSampleId :
 20220088-AMENDED-BERKELEY-8-COMP



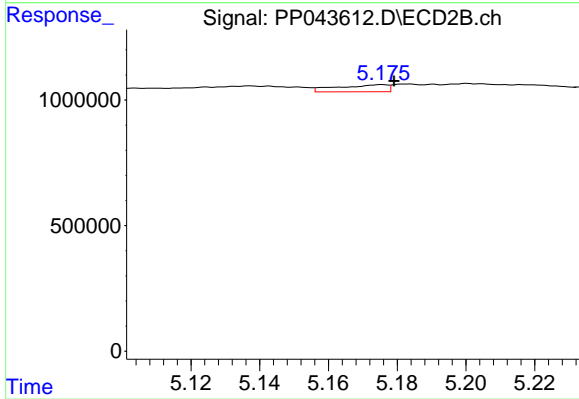
#25 AR-1248-5

R.T.: 5.216 min
 Delta R.T.: -0.006 min
 Response: 259035
 Conc: 4.52 ng/ml



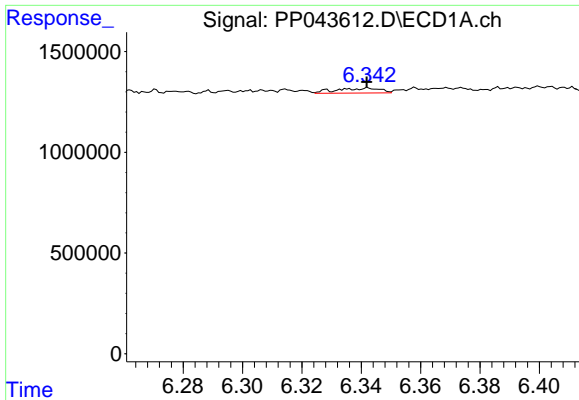
#26 AR-1254-1

R.T.: 6.091 min
 Delta R.T.: -0.010 min
 Response: 196637
 Conc: 2.60 ng/ml



#26 AR-1254-1

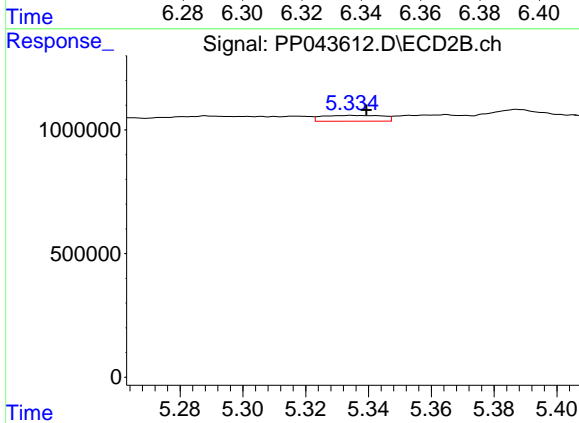
R.T.: 5.176 min
 Delta R.T.: -0.003 min
 Response: 285229
 Conc: 3.27 ng/ml



#27 AR-1254-2

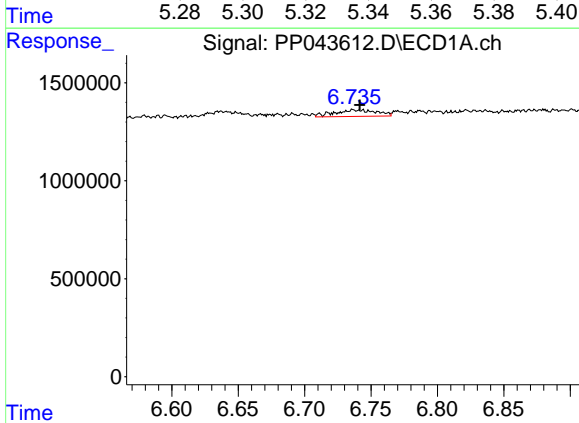
R.T.: 6.342 min
 Delta R.T.: 0.000 min
 Response: 250332
 Conc: 2.23 ng/ml

Instrument :
 ECD_P
 ClientSampleId :
 20220088-AMENDED-BERKELEY-8-COMP



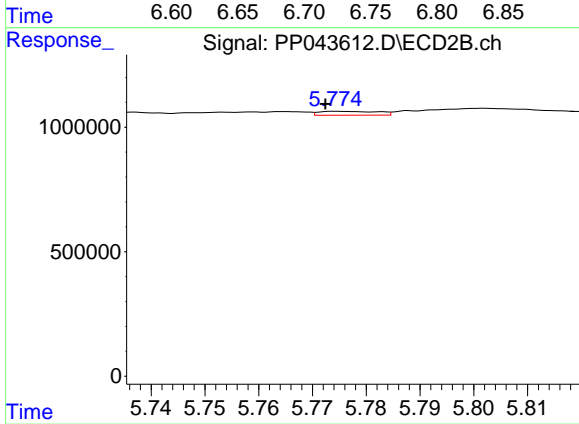
#27 AR-1254-2

R.T.: 5.335 min
 Delta R.T.: -0.005 min
 Response: 318840
 Conc: 4.18 ng/ml



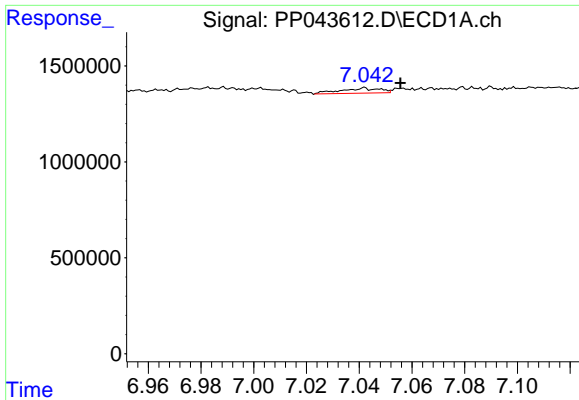
#28 AR-1254-3

R.T.: 6.737 min
 Delta R.T.: -0.005 min
 Response: 721930
 Conc: 6.24 ng/ml



#28 AR-1254-3

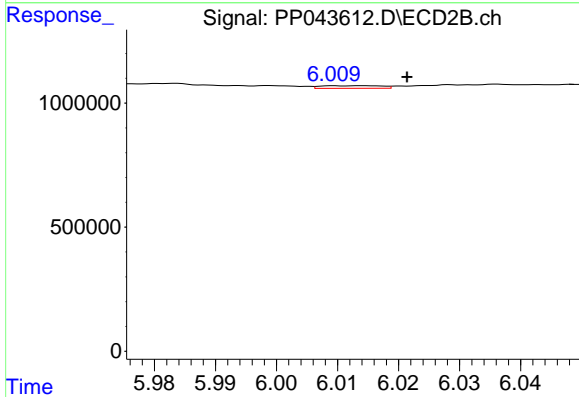
R.T.: 5.775 min
 Delta R.T.: 0.002 min
 Response: 121628
 Conc: 0.99 ng/ml



#29 AR-1254-4

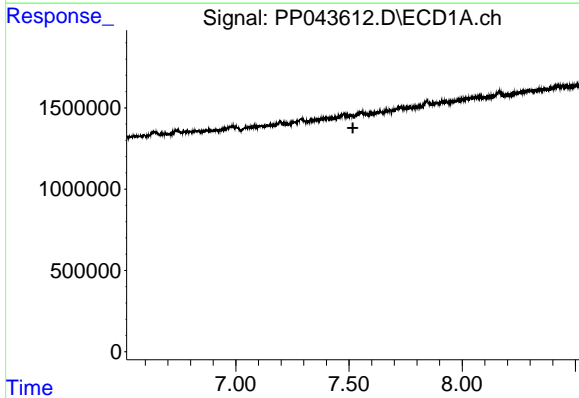
R.T.: 7.042 min
 Delta R.T.: -0.014 min
 Response: 276434
 Conc: 3.46 ng/ml

Instrument :
 ECD_P
 ClientSampleId :
 20220088-AMENDED-BERKELEY-8-COMP



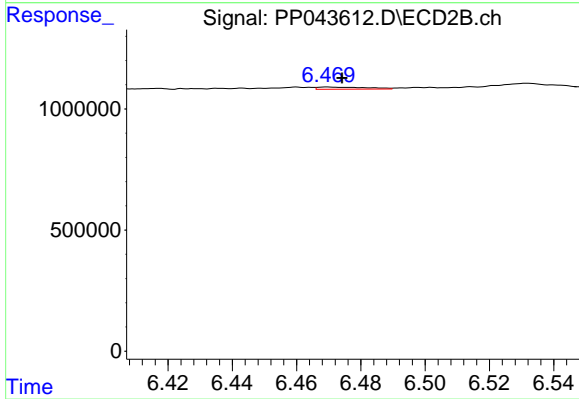
#29 AR-1254-4

R.T.: 6.014 min
 Delta R.T.: -0.007 min
 Response: 74904
 Conc: 0.95 ng/ml



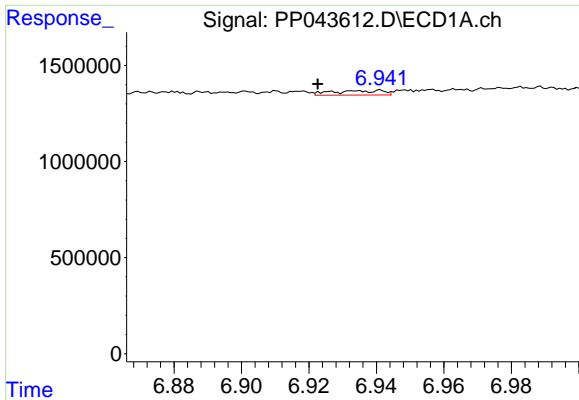
#30 AR-1254-5

R.T.: 0.000 min
 Exp R.T. : 7.517 min
 Response: 0
 Conc: N.D.



#30 AR-1254-5

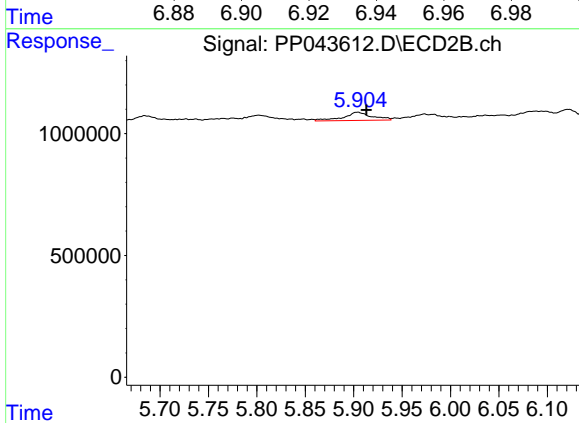
R.T.: 6.470 min
 Delta R.T.: -0.004 min
 Response: 94184
 Conc: 0.81 ng/ml



#31 AR-1260-1

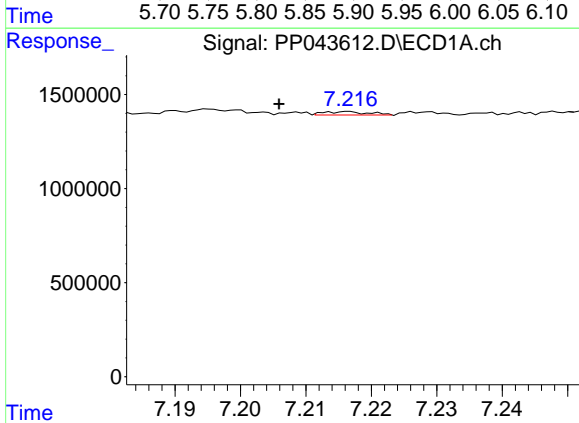
R.T.: 6.934 min
 Delta R.T.: 0.011 min
 Response: 244242
 Conc: 2.92 ng/ml

Instrument :
 ECD_P
 ClientSampleId :
 20220088-AMENDED-BERKELEY-8-COMP



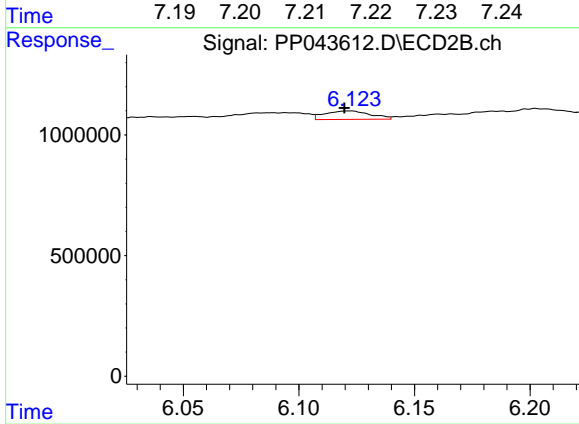
#31 AR-1260-1

R.T.: 5.905 min
 Delta R.T.: -0.008 min
 Response: 697343
 Conc: 8.72 ng/ml



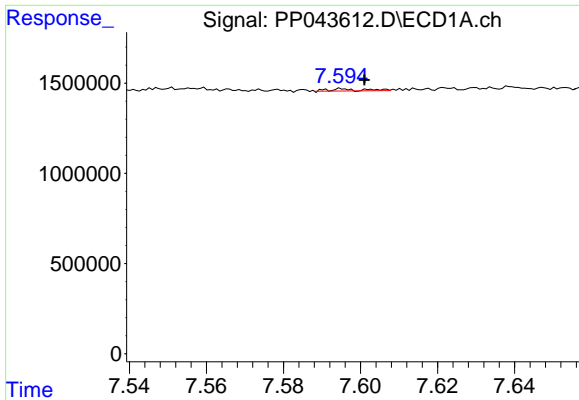
#32 AR-1260-2

R.T.: 7.216 min
 Delta R.T.: 0.010 min
 Response: 83469
 Conc: 0.92 ng/ml



#32 AR-1260-2

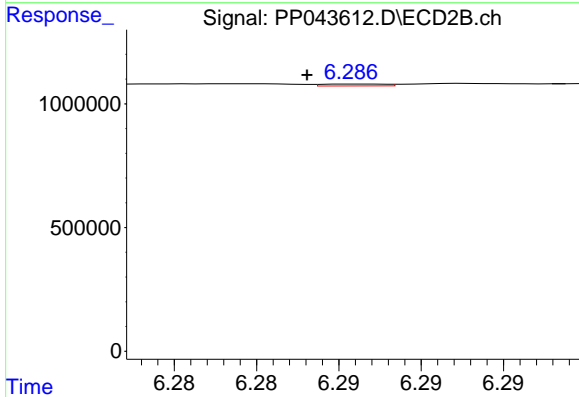
R.T.: 6.123 min
 Delta R.T.: 0.003 min
 Response: 481762
 Conc: 4.93 ng/ml



#33 AR-1260-3

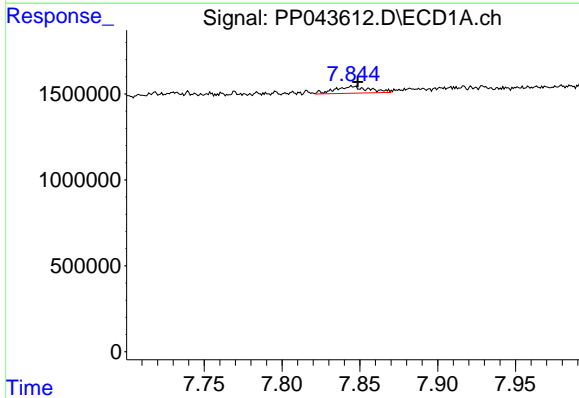
R.T.: 7.595 min
 Delta R.T.: -0.006 min
 Response: 73025
 Conc: 1.01 ng/ml

Instrument :
 ECD_P
 ClientSampleId :
 20220088-AMENDED-BERKELEY-8-COMP



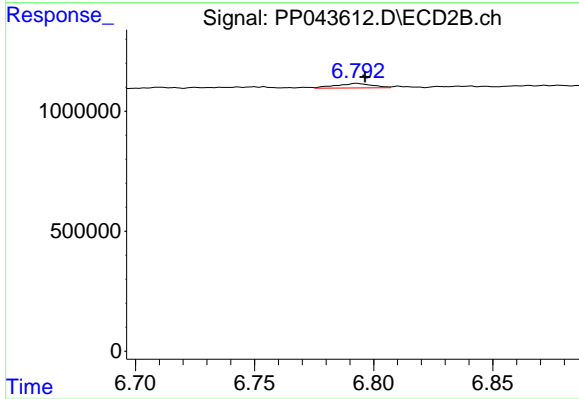
#33 AR-1260-3

R.T.: 6.286 min
 Delta R.T.: 0.003 min
 Response: 19783
 Conc: 0.22 ng/ml



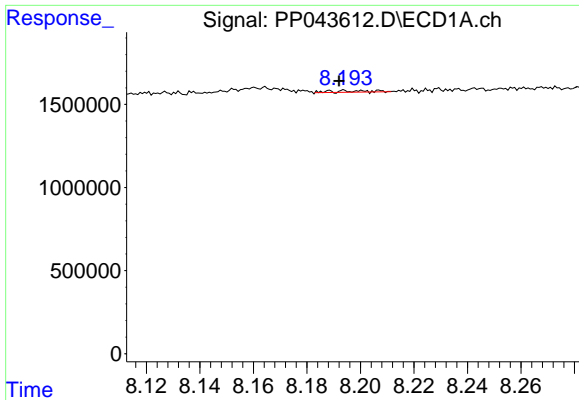
#34 AR-1260-4

R.T.: 7.845 min
 Delta R.T.: -0.003 min
 Response: 607837
 Conc: 7.08 ng/ml



#34 AR-1260-4

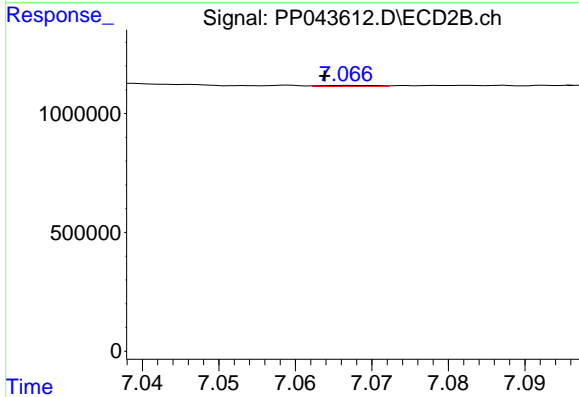
R.T.: 6.793 min
 Delta R.T.: -0.004 min
 Response: 202546
 Conc: 2.50 ng/ml



#35 AR-1260-5

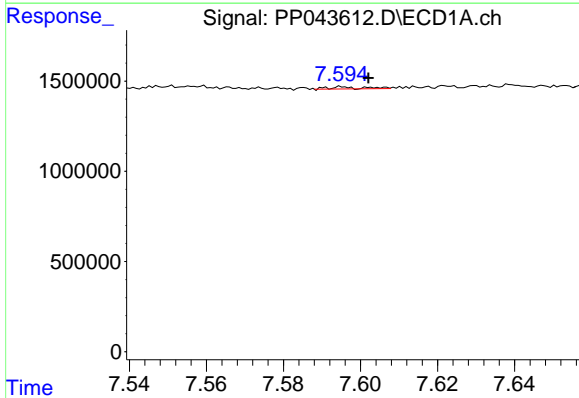
R.T.: 8.194 min
 Delta R.T.: 0.002 min
 Response: 88820
 Conc: 0.57 ng/ml

Instrument :
 ECD_P
 ClientSampleId :
 20220088-AMENDED-BERKELEY-8-COMP



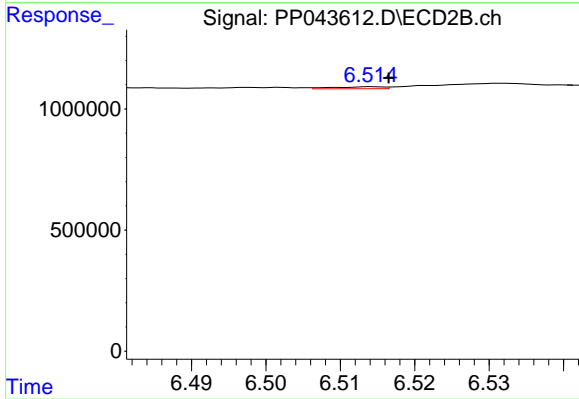
#35 AR-1260-5

R.T.: 7.067 min
 Delta R.T.: 0.003 min
 Response: 22282
 Conc: 0.12 ng/ml



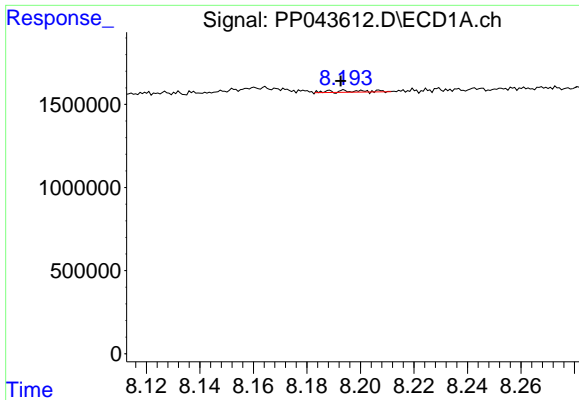
#36 AR-1262-1

R.T.: 7.595 min
 Delta R.T.: -0.007 min
 Response: 73025
 Conc: 0.74 ng/ml



#36 AR-1262-1

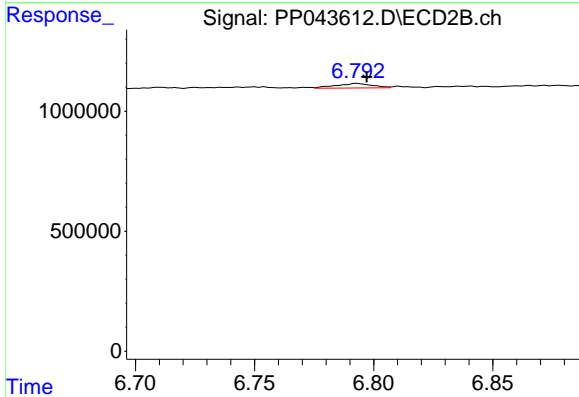
R.T.: 6.514 min
 Delta R.T.: -0.002 min
 Response: 39584
 Conc: 0.36 ng/ml



#37 AR-1262-2

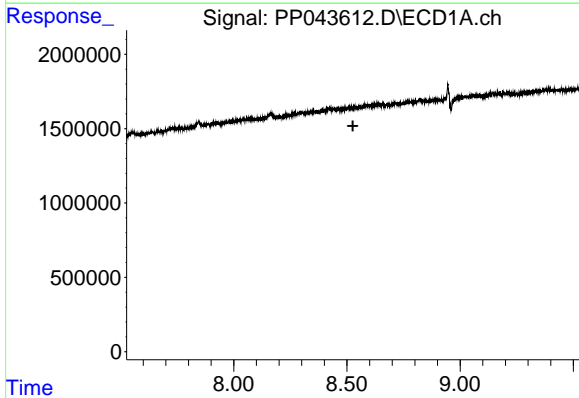
R.T.: 8.194 min
 Delta R.T.: 0.002 min
 Response: 88820
 Conc: 0.55 ng/ml

Instrument : ECD_P
 ClientSampleId : 20220088-AMENDED-BERKELEY-8-COMP



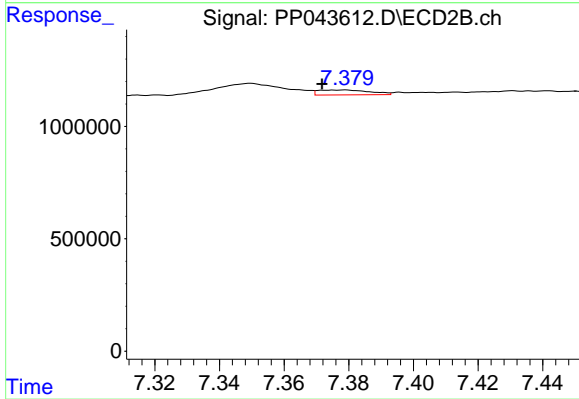
#37 AR-1262-2

R.T.: 6.793 min
 Delta R.T.: -0.004 min
 Response: 202546
 Conc: 1.99 ng/ml



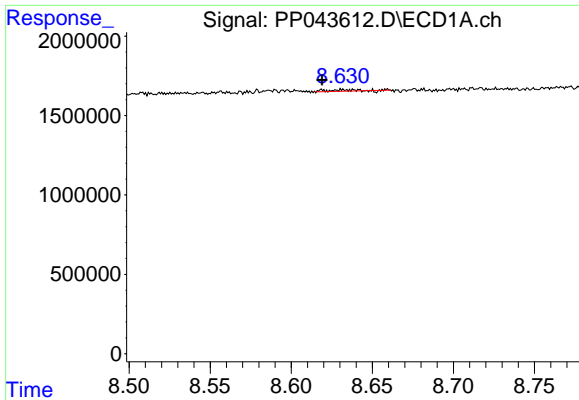
#38 AR-1262-3

R.T.: 0.000 min
 Exp R.T. : 8.526 min
 Response: 0
 Conc: N.D.



#38 AR-1262-3

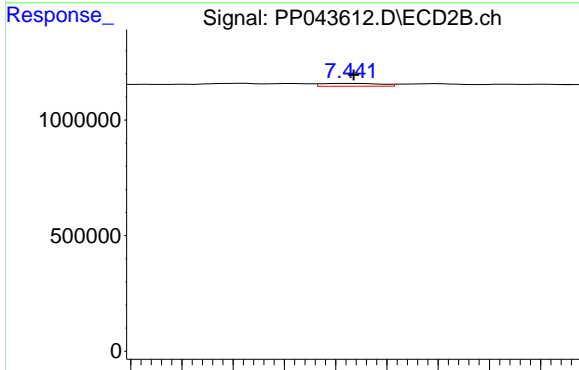
R.T.: 7.379 min
 Delta R.T.: 0.007 min
 Response: 244095
 Conc: 2.86 ng/ml



#39 AR-1262-4

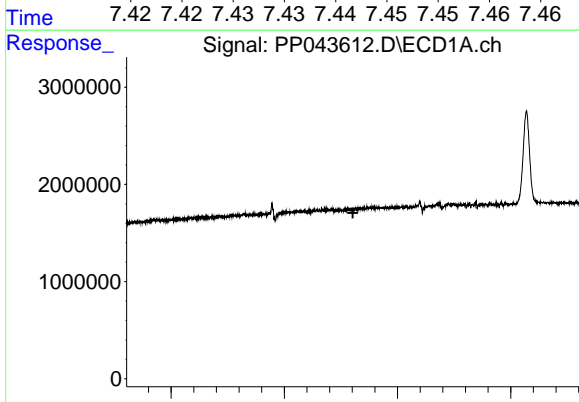
R.T.: 8.637 min
 Delta R.T.: 0.018 min
 Response: 126564
 Conc: 2.64 ng/ml

Instrument :
 ECD_P
ClientSampleId :
 20220088-AMENDED-BERKELEY-8-COMP



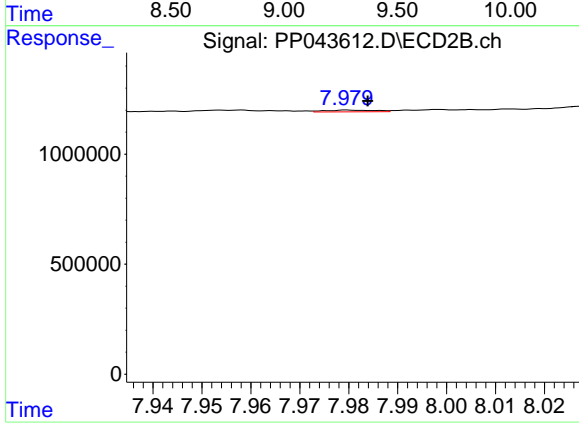
#39 AR-1262-4

R.T.: 7.442 min
 Delta R.T.: 0.000 min
 Response: 49202
 Conc: 0.32 ng/ml



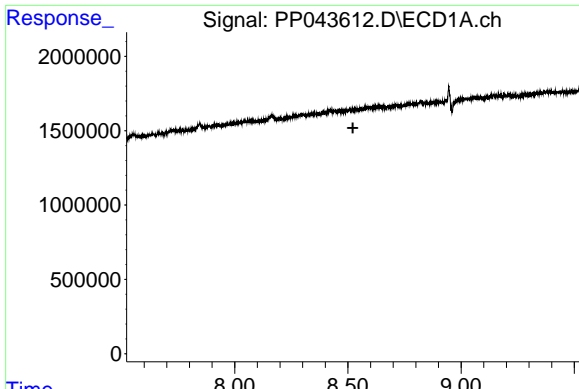
#40 AR-1262-5

R.T.: 0.000 min
 Exp R.T. : 9.303 min
 Response: 0
 Conc: N.D.



#40 AR-1262-5

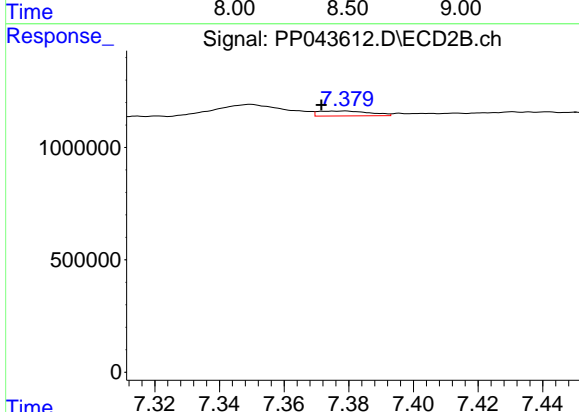
R.T.: 7.980 min
 Delta R.T.: -0.004 min
 Response: 56344
 Conc: 0.72 ng/ml



#41 AR-1268-1

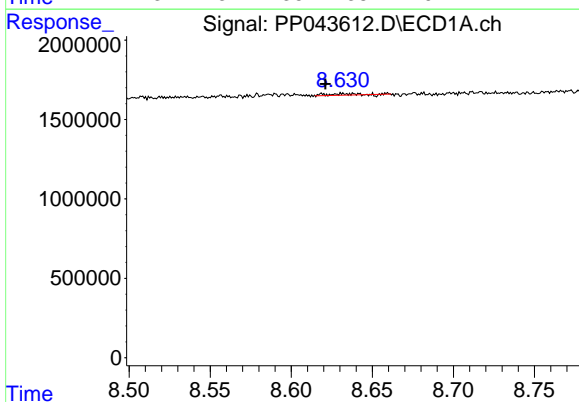
R.T.: 0.000 min
 Exp R.T.: 8.523 min
 Response: 0
 Conc: N.D.

Instrument :
 ECD_P
ClientSampleId :
 20220088-AMENDED-BERKELEY-8-COMP



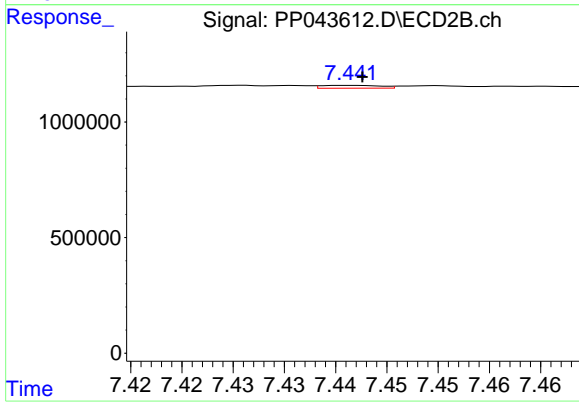
#41 AR-1268-1

R.T.: 7.379 min
 Delta R.T.: 0.007 min
 Response: 244095
 Conc: 0.96 ng/ml



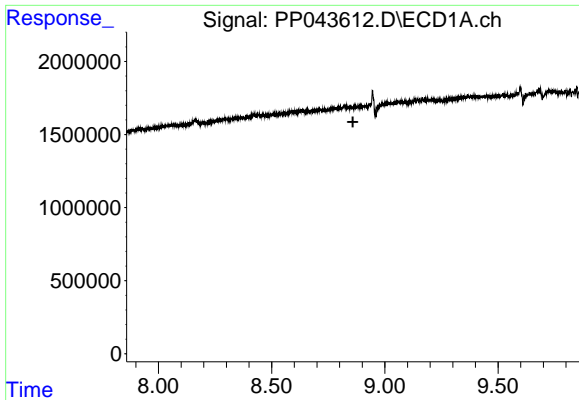
#42 AR-1268-2

R.T.: 8.637 min
 Delta R.T.: 0.016 min
 Response: 126564
 Conc: 0.72 ng/ml



#42 AR-1268-2

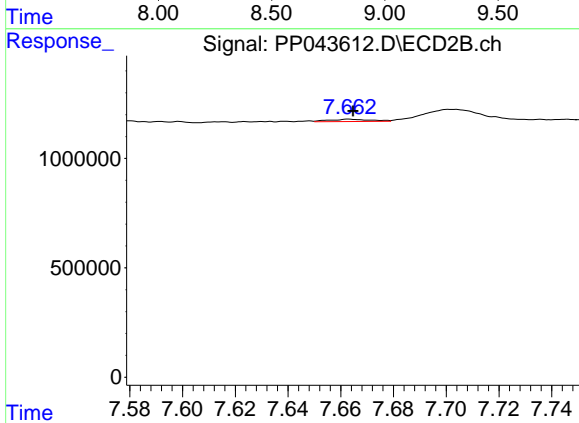
R.T.: 7.442 min
 Delta R.T.: -0.001 min
 Response: 49202
 Conc: 0.22 ng/ml



#43 AR-1268-3

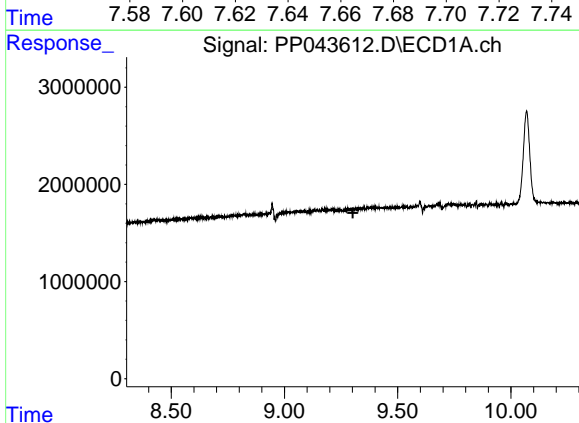
R.T.: 0.000 min
 Exp R.T.: 8.859 min
 Response: 0
 Conc: N.D.

Instrument : ECD_P
 ClientSampleId : 20220088-AMENDED-BERKELEY-8-COMP



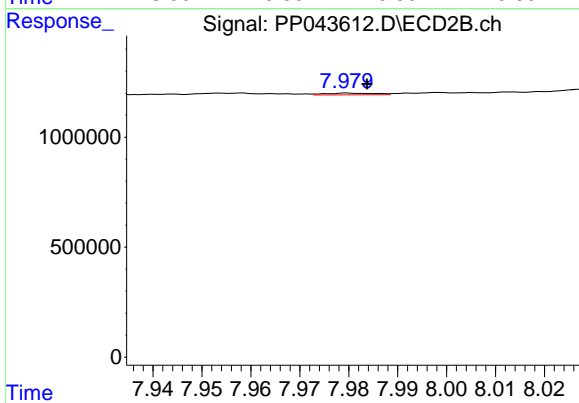
#43 AR-1268-3

R.T.: 7.663 min
 Delta R.T.: -0.002 min
 Response: 113425
 Conc: 0.58 ng/ml



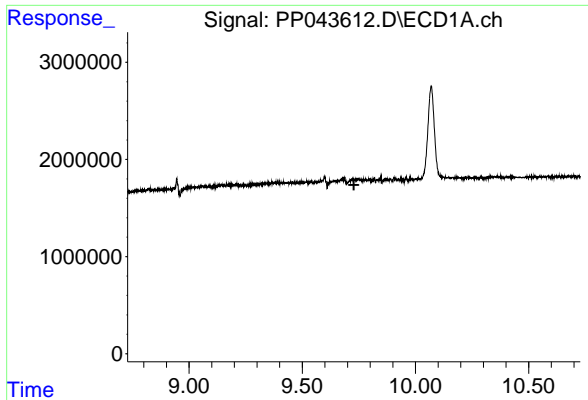
#44 AR-1268-4

R.T.: 0.000 min
 Exp R.T.: 9.302 min
 Response: 0
 Conc: N.D.



#44 AR-1268-4

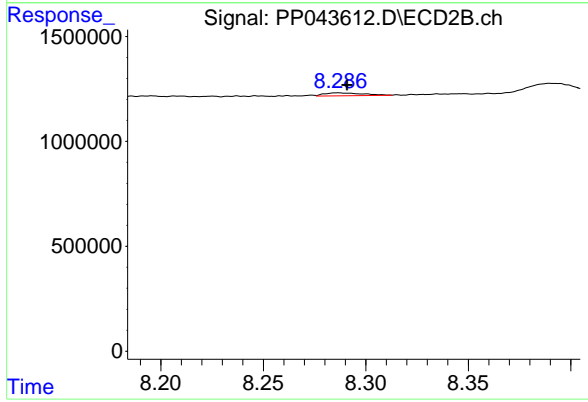
R.T.: 7.980 min
 Delta R.T.: -0.004 min
 Response: 56344
 Conc: 0.63 ng/ml



#45 AR-1268-5

R.T.: 9.723 min
 Delta R.T.: -0.005 min
 Response: -369814
 Conc: N.D.

Instrument :
 ECD_P
 ClientSampleId :
 20220088-AMENDED-BERKELEY-8-COMP



#45 AR-1268-5

R.T.: 8.287 min
 Delta R.T.: -0.004 min
 Response: 183018
 Conc: 0.30 ng/ml