

Data Path : Z:\pestpcbsrv\HPCHEM1\ECD_P\Data\PP021122\
 Data File : PP043613.D
 Signal(s) : Signal #1: ECD1A.ch Signal #2: ECD2B.ch
 Acq On : 11 Feb 2022 16:32
 Operator : YP\AJ
 Sample : N1487-01
 Misc :
 ALS Vial : 19 Sample Multiplier: 1

Instrument :
 ECD_P
 ClientSampleId :
 251488

Integration File signal 1: autoint1.e
 Integration File signal 2: autoint2.e
 Quant Time: Feb 12 04:46:23 2022
 Quant Method : Z:\pestpcbsrv\HPCHEM1\ECD_P\methods\PP021022.M
 Quant Title : GC EXTRACTABLES
 QLast Update : Fri Feb 11 04:48:05 2022
 Response via : Initial Calibration
 Integrator: ChemStation

Volume Inj. : 2 µl
 Signal #1 Phase : ZB-MR1 Signal #2 Phase: ZB-MR2
 Signal #1 Info : 30Mx0.32mmx 0.50µ Signal #2 Info : 30M x 0.32mm x 0.25µm

Compound	RT#1	RT#2	Resp#1	Resp#2	ng/ml	ng/ml
System Monitoring Compounds						
1) SA Tetrachlo...	3.918	3.174	25213389	29173858	11.403	15.532 #
2) SA Decachlor...	10.068	8.554	16268870	23329598	13.696	14.380
Target Compounds						
3) L1 AR-1016-1	5.173	4.323	108196	135293	1.491	2.208 #
4) L1 AR-1016-2	5.194	4.342	245513	848260	2.328	10.040 #
5) L1 AR-1016-3	5.264	4.525	281260	464778	4.272	9.949 #
6) L1 AR-1016-4	5.380	4.575	88410	978436	1.630	26.182 #
7) L1 AR-1016-5	5.689	4.800	1178499	1198116	22.436	26.227
8) L2 AR-1221-1	4.136	3.396	650294	1280866	25.542	53.697 #
9) L2 AR-1221-2	4.238	3.486	338740	871302	17.644	48.245 #
10) L2 AR-1221-3	4.314	3.571	309428	616085	5.386	11.943 #
11) L3 AR-1232-1	4.314	3.571	309428	616085	6.376	14.319 #
12) L3 AR-1232-2	4.886	4.342	198113	848260	8.360	23.762 #
13) L3 AR-1232-3	5.194	4.525	245513	464778	5.702	23.769 #
14) L3 AR-1232-4	5.380	4.618	88410	793424	4.050	45.883 #
15) L3 AR-1232-5	5.470	4.800	1041787	1198116	64.590	63.783
16) L4 AR-1242-1	5.173	4.323	108196	135293	1.925	2.775 #
17) L4 AR-1242-2	5.194	4.342	245513	848260	2.967	12.598 #
18) L4 AR-1242-3	5.264	4.525	281260	464778	5.434	12.381 #
19) L4 AR-1242-4	5.380	4.618	88410	793424	2.070	21.973 #
20) L4 AR-1242-5	6.173	5.180	2197643	4580143	50.893	106.396 #
21) L5 AR-1248-1	5.173	4.323	108196	135293	2.639	3.632 #
22) L5 AR-1248-2	5.470	4.575	1041787	978436	18.337	20.000
23) L5 AR-1248-3	5.689	4.618	1178499	793424	17.664	15.462
24) L5 AR-1248-4	6.131	4.800	2748268	1198116	39.336	20.437 #
25) L5 AR-1248-5	6.173	5.221	2197643	2001900	31.790	34.939
26) L6 AR-1254-1	6.102	5.180	3320089	4580143	43.942	52.445
27) L6 AR-1254-2	6.341	5.338	3899796	2247201	34.767	29.461
28) L6 AR-1254-3	6.742	5.771	4411183	4380959	38.122	35.746
29) L6 AR-1254-4	7.058	6.022	339650	1561730	4.254	19.788 #
30) L6 AR-1254-5	7.517	6.473	1656828	4945129	19.319	42.761 #
31) L7 AR-1260-1	6.923	5.913	1144290	2740961	13.664	34.275 #
32) L7 AR-1260-2	7.195	6.118	5856723	2103889	64.700	21.545 #
33) L7 AR-1260-3	7.599	6.281	306722	1476944	4.231	16.178 #
34) L7 AR-1260-4	7.846	6.795	1164045	884871	13.558	10.936
35) L7 AR-1260-5	8.193	7.062	675986	1366552	4.361	7.392 #
36) L8 AR-1262-1	7.604	6.516	314034	1161460	3.180	10.565 #
37) L8 AR-1262-2	8.193	6.795	675986	884871	4.187	8.675 #
38) L8 AR-1262-3	8.540	7.374	755374	769888	6.905	9.034 #
39) L8 AR-1262-4	8.620	7.439	267678	1503490	5.582	9.680 #
40) L8 AR-1262-5	9.296	7.983	309250	824423	5.553	10.598 #
41) L9 AR-1268-1	8.540f	7.374	755374	769888	3.875	3.039

Data Path : Z:\pestpcbsrv\HPCHEM1\ECD_P\Data\PP021122\
 Data File : PP043613.D
 Signal(s) : Signal #1: ECD1A.ch Signal #2: ECD2B.ch
 Acq On : 11 Feb 2022 16:32
 Operator : YP\AJ
 Sample : N1487-01
 Misc :
 ALS Vial : 19 Sample Multiplier: 1

Instrument :
 ECD_P
 ClientSampleId :
 251488

Integration File signal 1: autoint1.e
 Integration File signal 2: autoint2.e
 Quant Time: Feb 12 04:46:23 2022
 Quant Method : Z:\pestpcbsrv\HPCHEM1\ECD_P\methods\PP021022.M
 Quant Title : GC EXTRACTABLES
 QLast Update : Fri Feb 11 04:48:05 2022
 Response via : Initial Calibration
 Integrator: ChemStation

Volume Inj. : 2 µl
 Signal #1 Phase : ZB-MR1 Signal #2 Phase: ZB-MR2
 Signal #1 Info : 30Mx0.32mmx 0.50µ Signal #2 Info : 30M x 0.32mm x 0.25µm

	Compound	RT#1	RT#2	Resp#1	Resp#2	ng/ml	ng/ml
42)	L9 AR-1268-2	8.620	7.439	267678	1503490	1.529	6.654 #
43)	L9 AR-1268-3	8.840f	7.663	188018	-1267	1.218	N.D. #
44)	L9 AR-1268-4	9.296	7.983	309250	824423	4.942	9.168 #
45)	L9 AR-1268-5	9.723	8.273f	655463	1081368	1.442	1.800

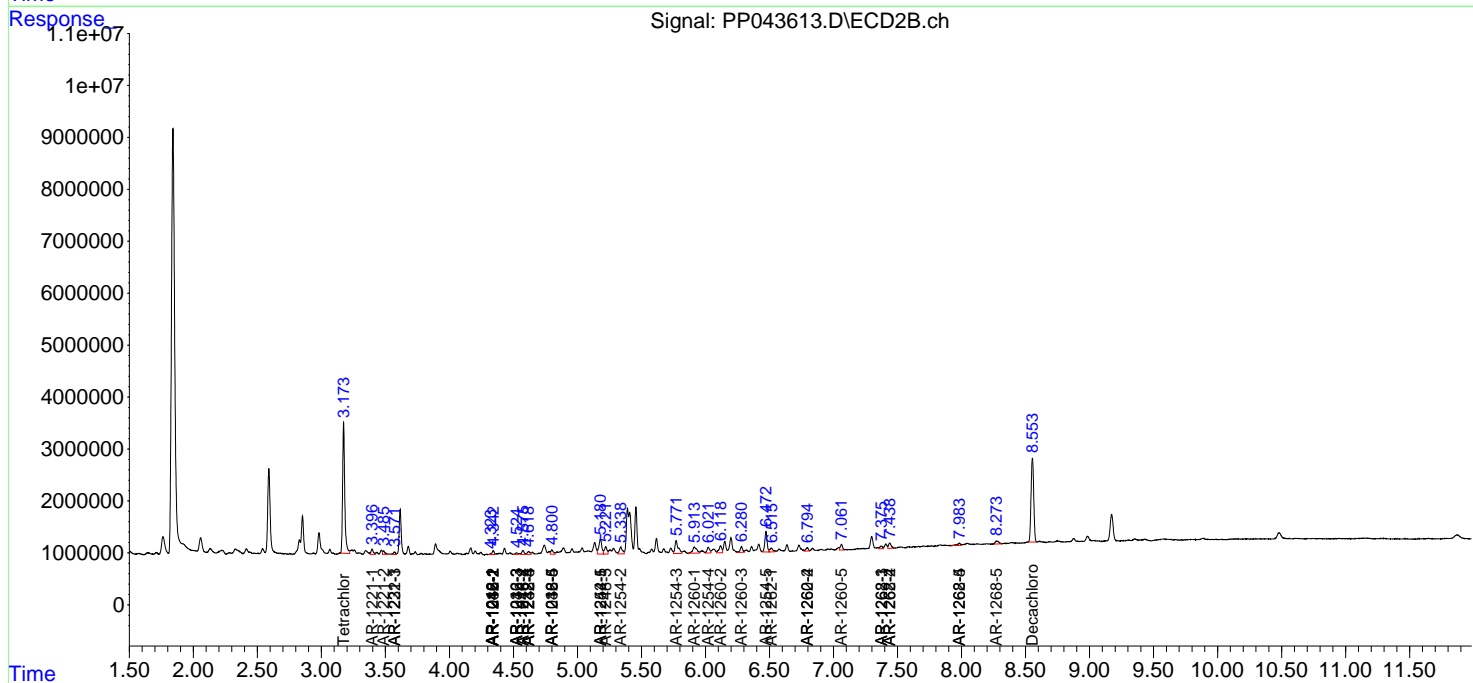
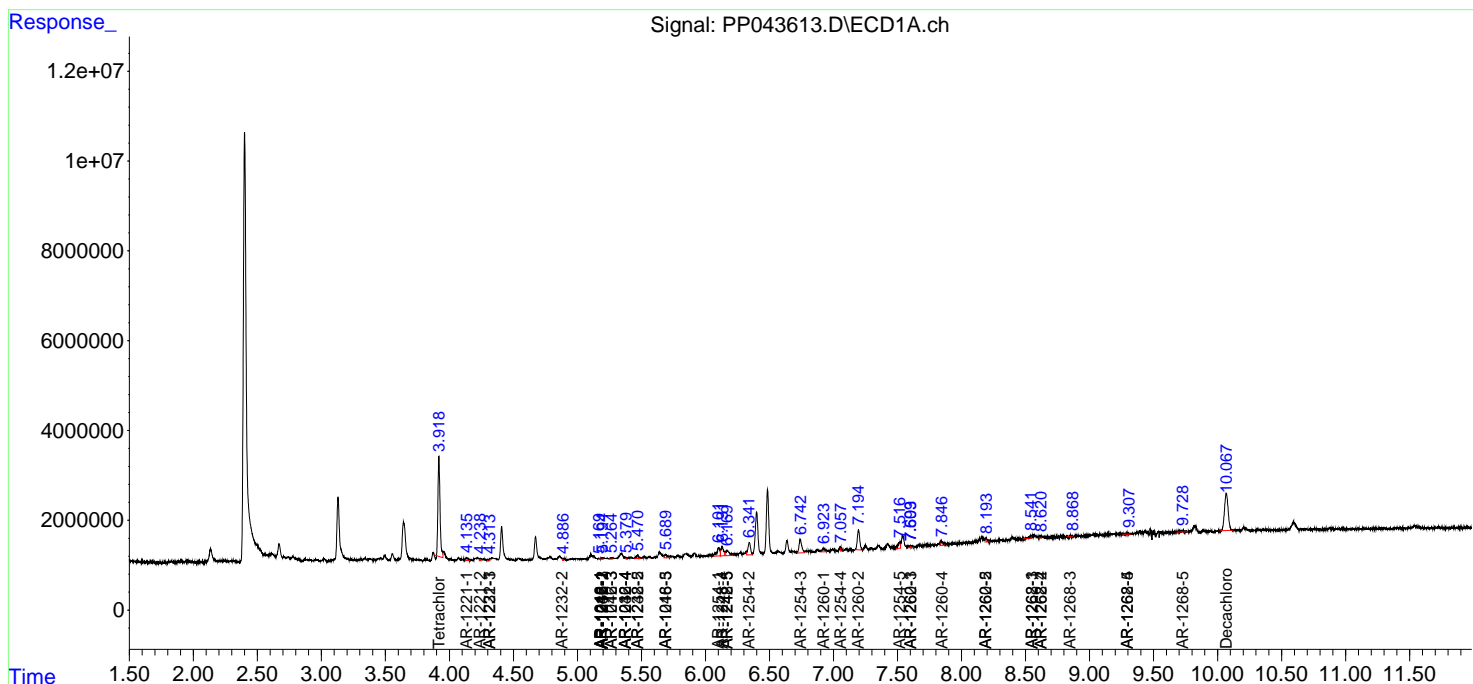
(f)=RT Delta > 1/2 Window (#)=Amounts differ by > 25% (m)=manual int.

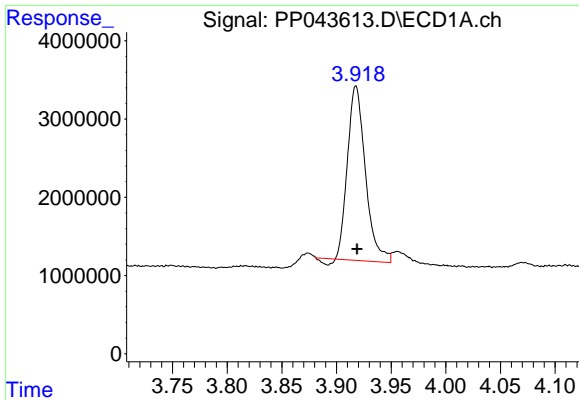
Data Path : Z:\pestpcbsrv\HPCHEM1\ECD_P\Data\PP021122\
 Data File : PP043613.D
 Signal(s) : Signal #1: ECD1A.ch Signal #2: ECD2B.ch
 Acq On : 11 Feb 2022 16:32
 Operator : YP\AJ
 Sample : N1487-01
 Misc :
 ALS Vial : 19 Sample Multiplier: 1

Instrument :
 ECD_P
 ClientSampleId :
 251488

Integration File signal 1: autoint1.e
 Integration File signal 2: autoint2.e
 Quant Time: Feb 12 04:46:23 2022
 Quant Method : Z:\pestpcbsrv\HPCHEM1\ECD_P\methods\PP021022.M
 Quant Title : GC EXTRACTABLES
 QLast Update : Fri Feb 11 04:48:05 2022
 Response via : Initial Calibration
 Integrator: ChemStation

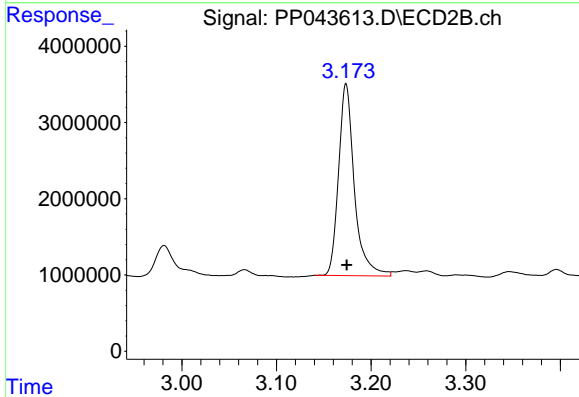
Volume Inj. : 2 µl
 Signal #1 Phase : ZB-MR1 Signal #2 Phase: ZB-MR2
 Signal #1 Info : 30Mx0.32mmx 0.50µ Signal #2 Info : 30M x 0.32mm x 0.25µm



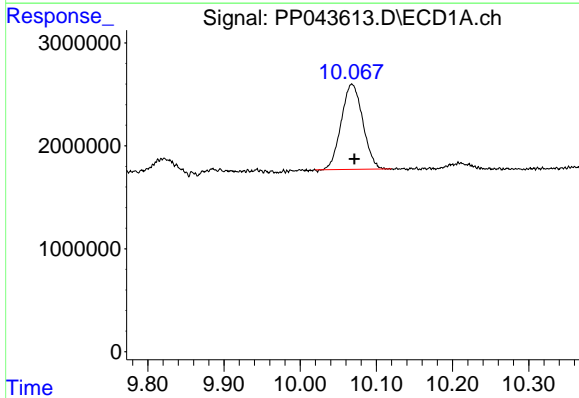


#1 Tetrachloro-m-xylene
 R.T.: 3.918 min
 Delta R.T.: -0.001 min
 Response: 25213389
 Conc: 11.40 ng/ml

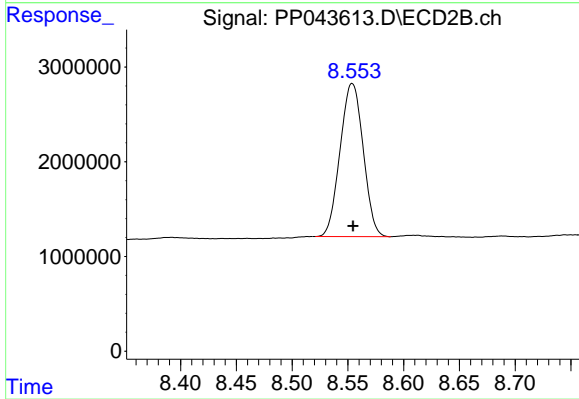
Instrument :
 ECD_P
 ClientSampleId :
 251488



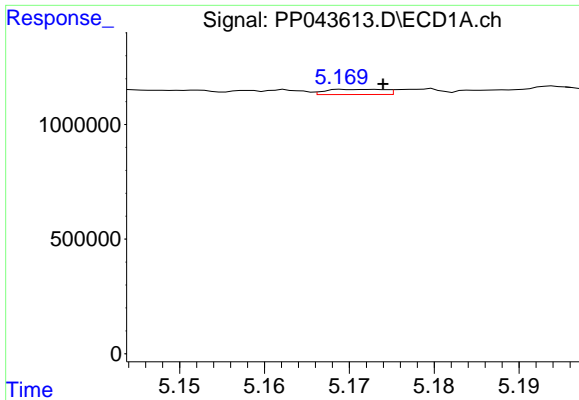
#1 Tetrachloro-m-xylene
 R.T.: 3.174 min
 Delta R.T.: 0.000 min
 Response: 29173858
 Conc: 15.53 ng/ml



#2 Decachlorobiphenyl
 R.T.: 10.068 min
 Delta R.T.: -0.003 min
 Response: 16268870
 Conc: 13.70 ng/ml



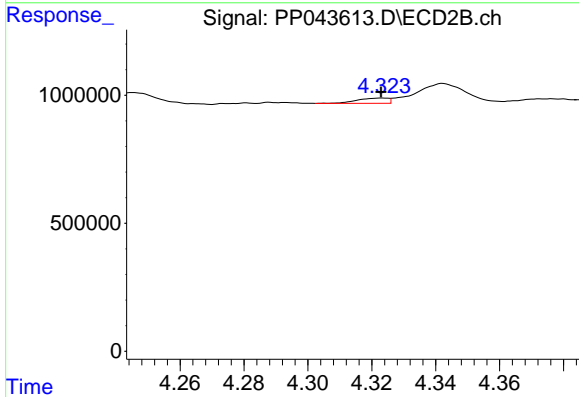
#2 Decachlorobiphenyl
 R.T.: 8.554 min
 Delta R.T.: 0.000 min
 Response: 23329598
 Conc: 14.38 ng/ml



#3 AR-1016-1

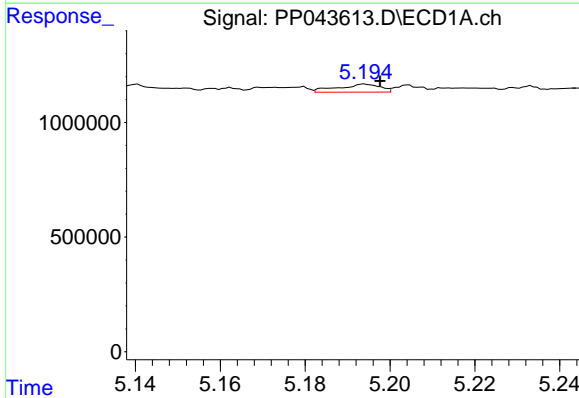
R.T.: 5.173 min
 Delta R.T.: -0.001 min
 Response: 108196
 Conc: 1.49 ng/ml

Instrument :
 ECD_P
 ClientSampleId :
 251488



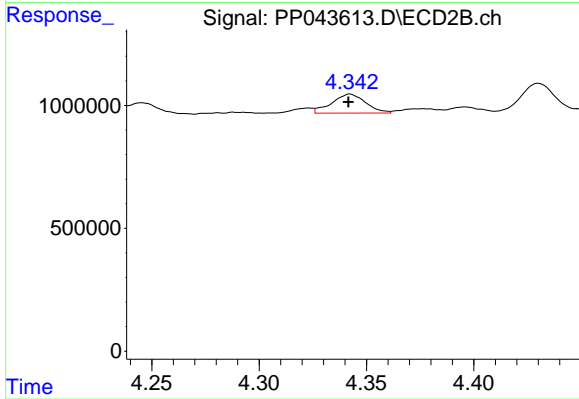
#3 AR-1016-1

R.T.: 4.323 min
 Delta R.T.: 0.000 min
 Response: 135293
 Conc: 2.21 ng/ml



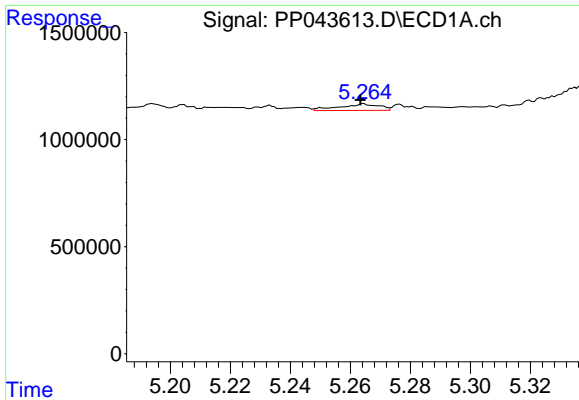
#4 AR-1016-2

R.T.: 5.194 min
 Delta R.T.: -0.004 min
 Response: 245513
 Conc: 2.33 ng/ml



#4 AR-1016-2

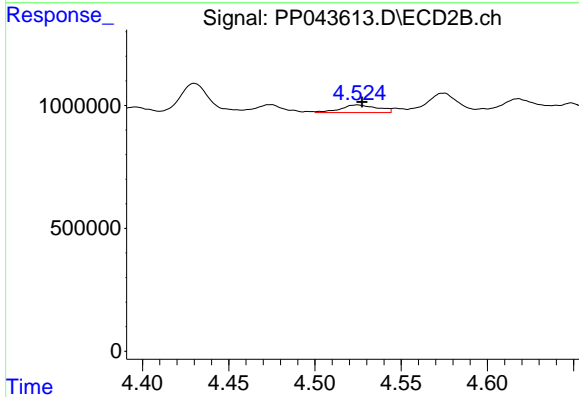
R.T.: 4.342 min
 Delta R.T.: 0.000 min
 Response: 848260
 Conc: 10.04 ng/ml



#5 AR-1016-3

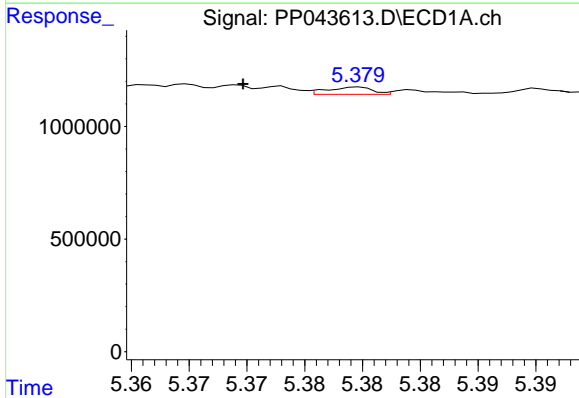
R.T.: 5.264 min
 Delta R.T.: 0.001 min
 Response: 281260
 Conc: 4.27 ng/ml

Instrument :
 ECD_P
 ClientSampleId :
 251488



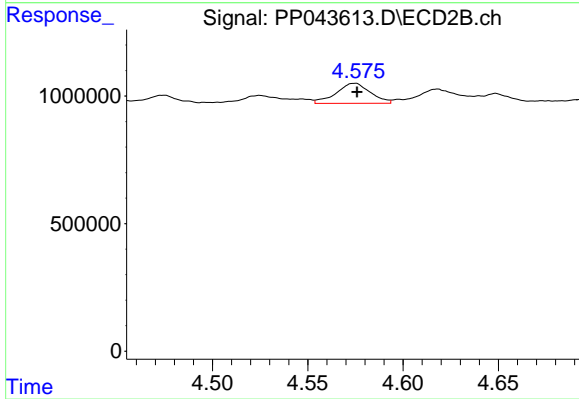
#5 AR-1016-3

R.T.: 4.525 min
 Delta R.T.: -0.003 min
 Response: 464778
 Conc: 9.95 ng/ml



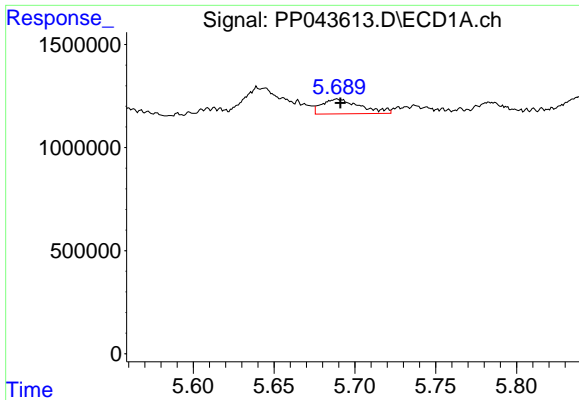
#6 AR-1016-4

R.T.: 5.380 min
 Delta R.T.: 0.010 min
 Response: 88410
 Conc: 1.63 ng/ml



#6 AR-1016-4

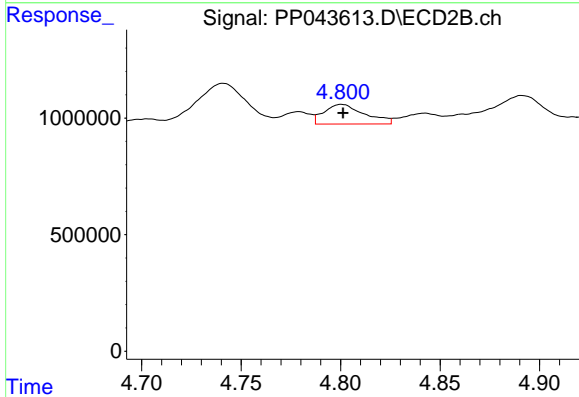
R.T.: 4.575 min
 Delta R.T.: 0.000 min
 Response: 978436
 Conc: 26.18 ng/ml



#7 AR-1016-5

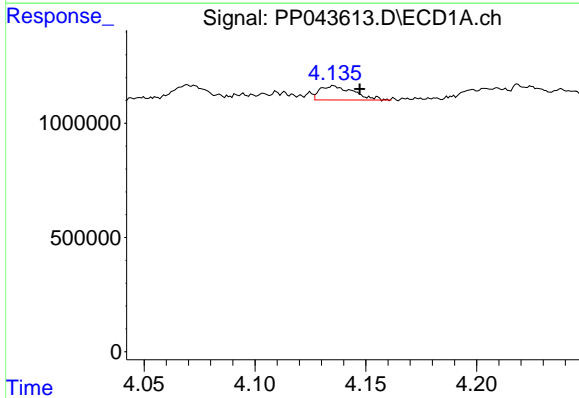
R.T.: 5.689 min
 Delta R.T.: -0.002 min
 Response: 1178499
 Conc: 22.44 ng/ml

Instrument :
 ECD_P
 ClientSampleId :
 251488



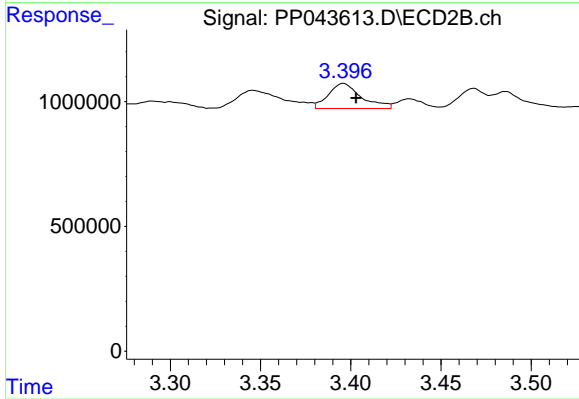
#7 AR-1016-5

R.T.: 4.800 min
 Delta R.T.: 0.000 min
 Response: 1198116
 Conc: 26.23 ng/ml



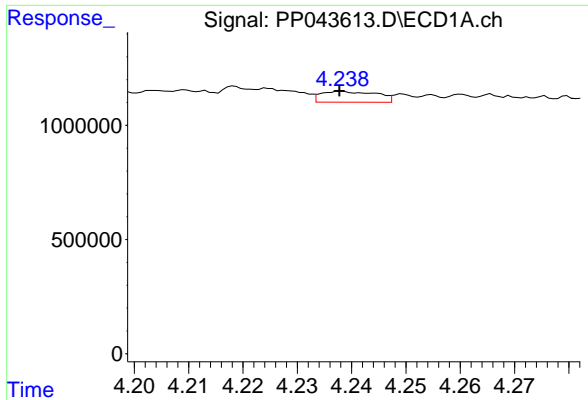
#8 AR-1221-1

R.T.: 4.136 min
 Delta R.T.: -0.012 min
 Response: 650294
 Conc: 25.54 ng/ml



#8 AR-1221-1

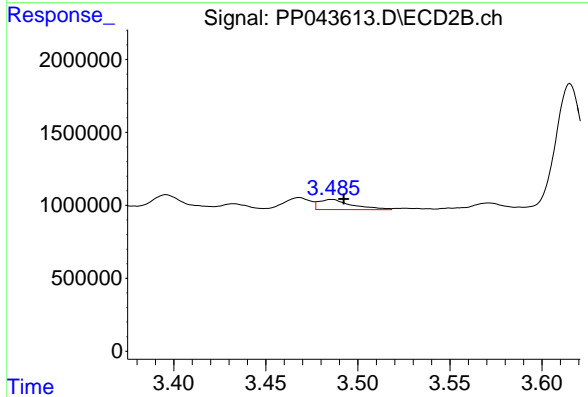
R.T.: 3.396 min
 Delta R.T.: -0.007 min
 Response: 1280866
 Conc: 53.70 ng/ml



#9 AR-1221-2

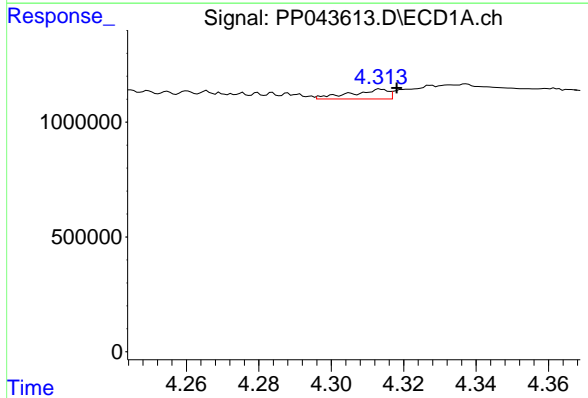
R.T.: 4.238 min
 Delta R.T.: 0.000 min
 Response: 338740
 Conc: 17.64 ng/ml

Instrument :
 ECD_P
 ClientSampleId :
 251488



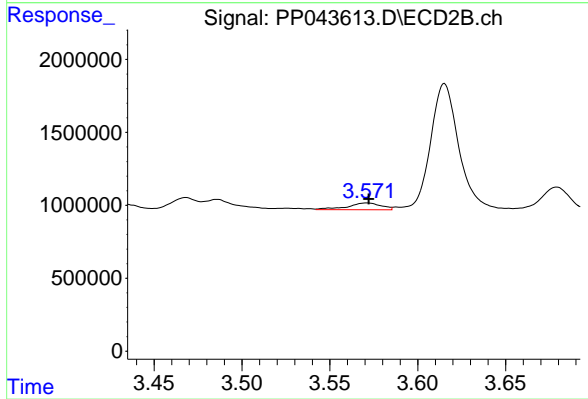
#9 AR-1221-2

R.T.: 3.486 min
 Delta R.T.: -0.006 min
 Response: 871302
 Conc: 48.24 ng/ml



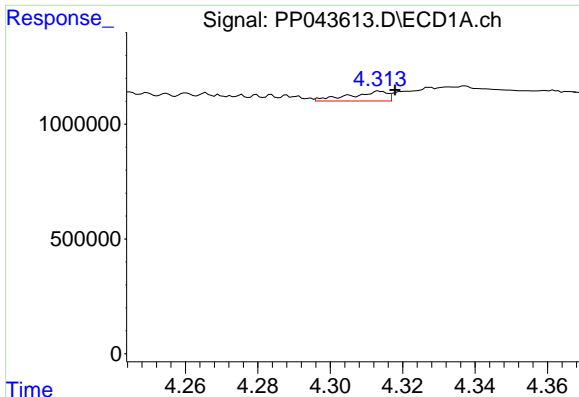
#10 AR-1221-3

R.T.: 4.314 min
 Delta R.T.: -0.004 min
 Response: 309428
 Conc: 5.39 ng/ml



#10 AR-1221-3

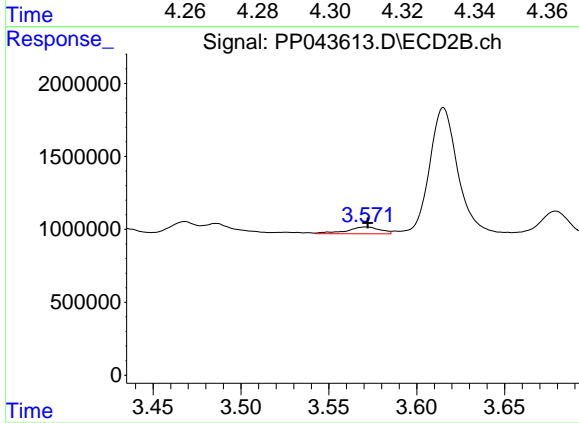
R.T.: 3.571 min
 Delta R.T.: 0.000 min
 Response: 616085
 Conc: 11.94 ng/ml



#11 AR-1232-1

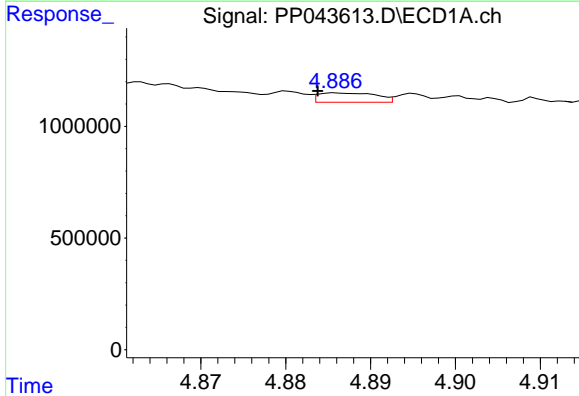
R.T.: 4.314 min
 Delta R.T.: -0.004 min
 Response: 309428
 Conc: 6.38 ng/ml

Instrument :
 ECD_P
 ClientSampleId :
 251488



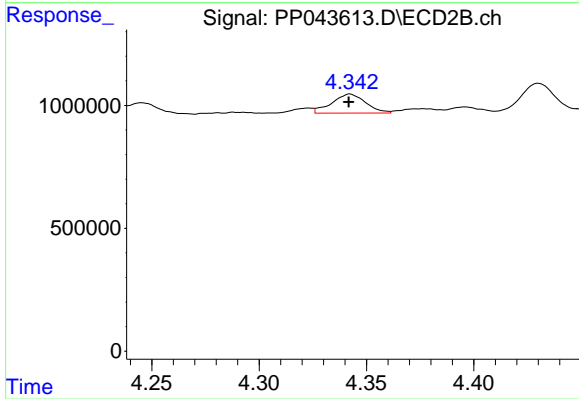
#11 AR-1232-1

R.T.: 3.571 min
 Delta R.T.: 0.000 min
 Response: 616085
 Conc: 14.32 ng/ml



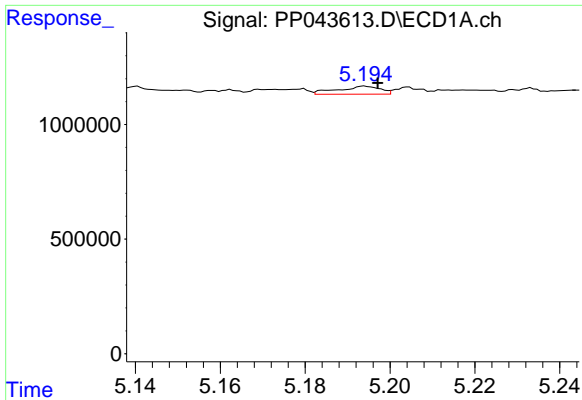
#12 AR-1232-2

R.T.: 4.886 min
 Delta R.T.: 0.002 min
 Response: 198113
 Conc: 8.36 ng/ml



#12 AR-1232-2

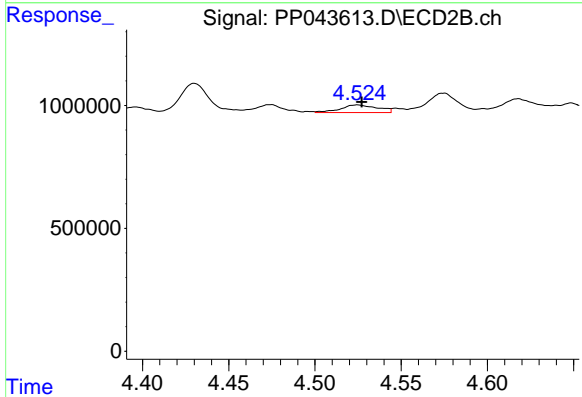
R.T.: 4.342 min
 Delta R.T.: 0.000 min
 Response: 848260
 Conc: 23.76 ng/ml



#13 AR-1232-3

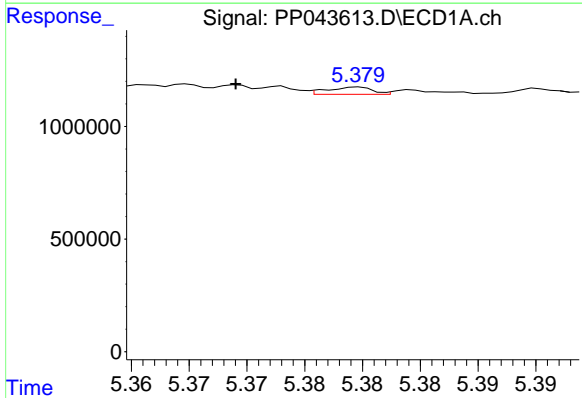
R.T.: 5.194 min
 Delta R.T.: -0.003 min
 Response: 245513
 Conc: 5.70 ng/ml

Instrument :
 ECD_P
 ClientSampleId :
 251488



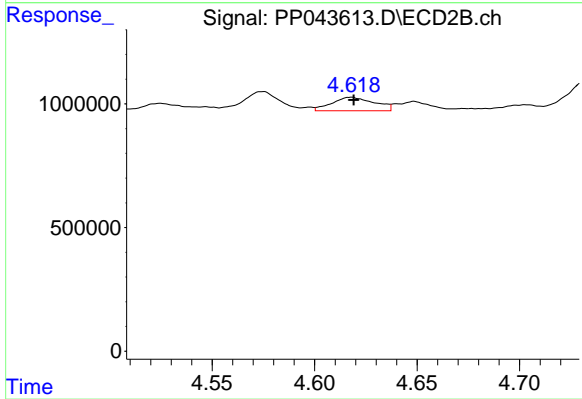
#13 AR-1232-3

R.T.: 4.525 min
 Delta R.T.: -0.002 min
 Response: 464778
 Conc: 23.77 ng/ml



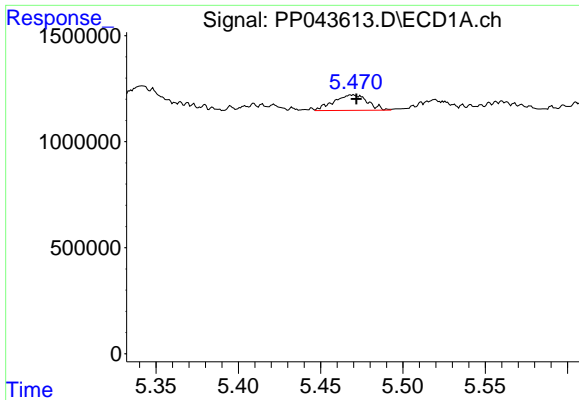
#14 AR-1232-4

R.T.: 5.380 min
 Delta R.T.: 0.011 min
 Response: 88410
 Conc: 4.05 ng/ml



#14 AR-1232-4

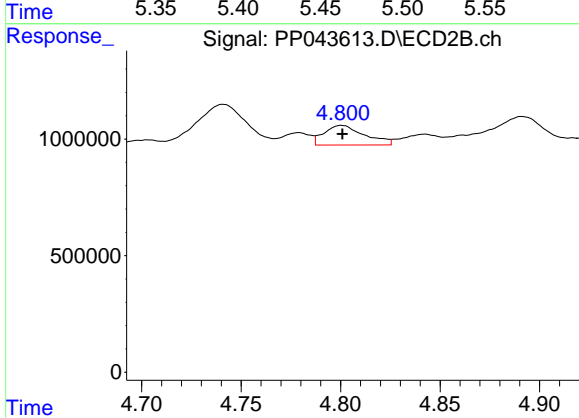
R.T.: 4.618 min
 Delta R.T.: 0.000 min
 Response: 793424
 Conc: 45.88 ng/ml



#15 AR-1232-5

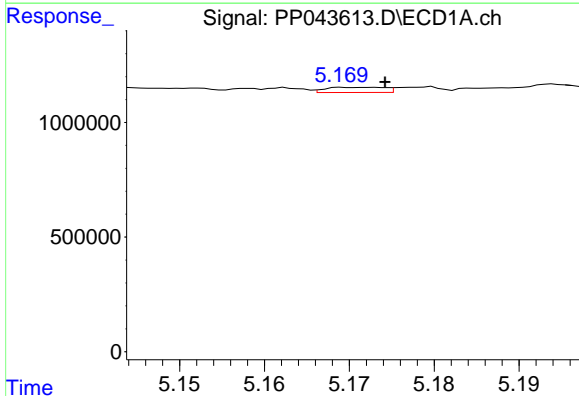
R.T.: 5.470 min
 Delta R.T.: -0.002 min
 Response: 1041787
 Conc: 64.59 ng/ml

Instrument :
 ECD_P
 ClientSampleId :
 251488



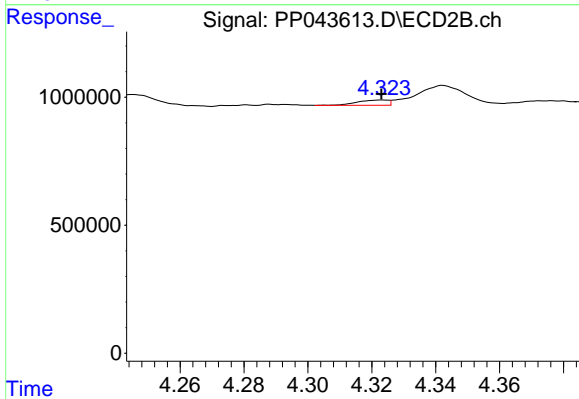
#15 AR-1232-5

R.T.: 4.800 min
 Delta R.T.: 0.000 min
 Response: 1198116
 Conc: 63.78 ng/ml



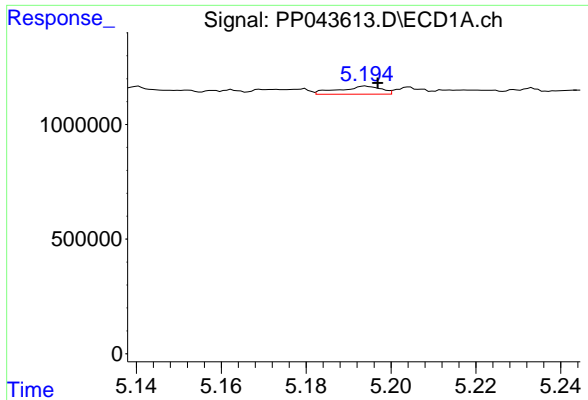
#16 AR-1242-1

R.T.: 5.173 min
 Delta R.T.: -0.001 min
 Response: 108196
 Conc: 1.93 ng/ml



#16 AR-1242-1

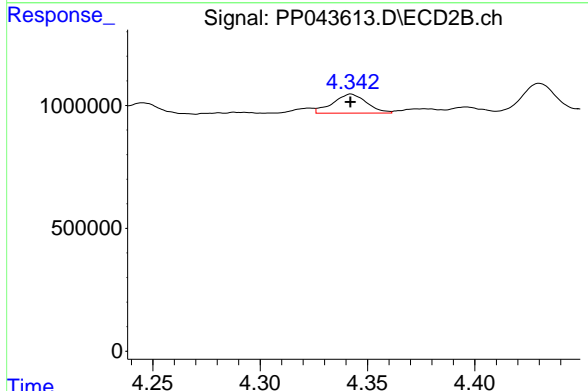
R.T.: 4.323 min
 Delta R.T.: 0.000 min
 Response: 135293
 Conc: 2.78 ng/ml



#17 AR-1242-2

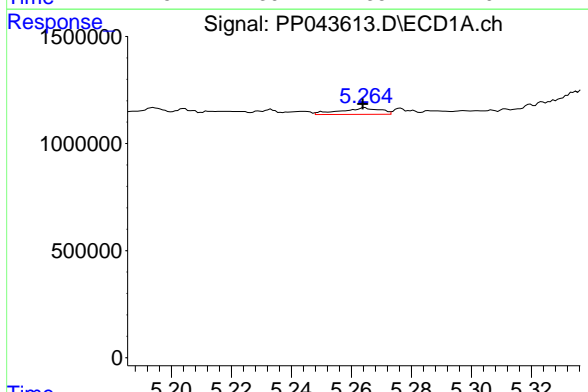
R.T.: 5.194 min
 Delta R.T.: -0.003 min
 Response: 245513
 Conc: 2.97 ng/ml

Instrument :
 ECD_P
 ClientSampleId :
 251488



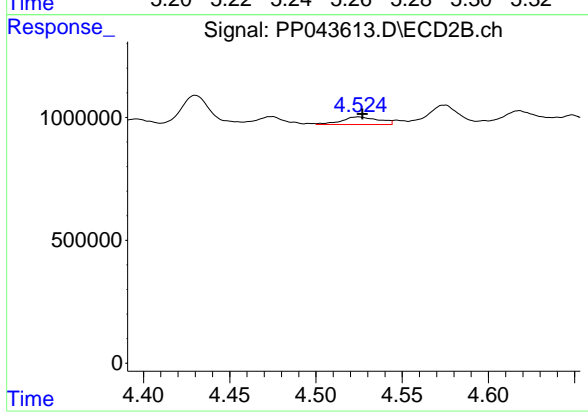
#17 AR-1242-2

R.T.: 4.342 min
 Delta R.T.: 0.000 min
 Response: 848260
 Conc: 12.60 ng/ml



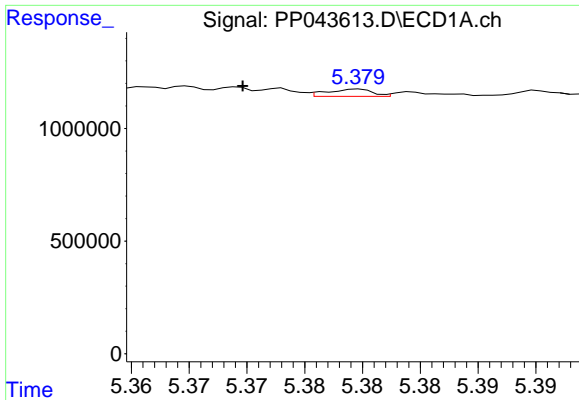
#18 AR-1242-3

R.T.: 5.264 min
 Delta R.T.: 0.000 min
 Response: 281260
 Conc: 5.43 ng/ml



#18 AR-1242-3

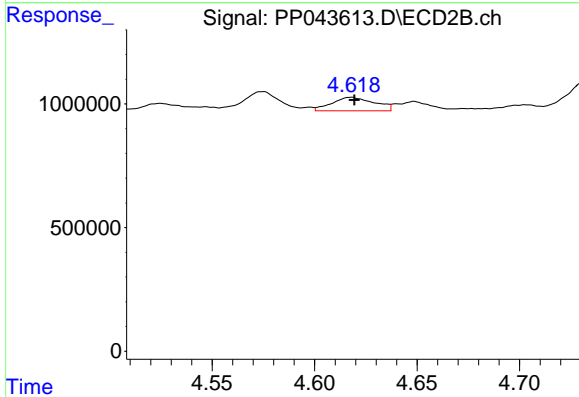
R.T.: 4.525 min
 Delta R.T.: -0.002 min
 Response: 464778
 Conc: 12.38 ng/ml



#19 AR-1242-4

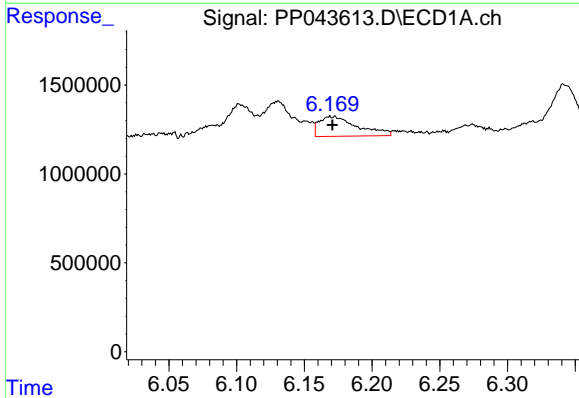
R.T.: 5.380 min
 Delta R.T.: 0.010 min
 Response: 88410
 Conc: 2.07 ng/ml

Instrument :
 ECD_P
 ClientSampleId :
 251488



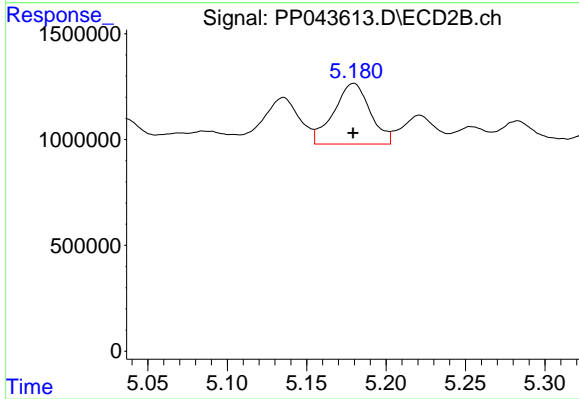
#19 AR-1242-4

R.T.: 4.618 min
 Delta R.T.: -0.001 min
 Response: 793424
 Conc: 21.97 ng/ml



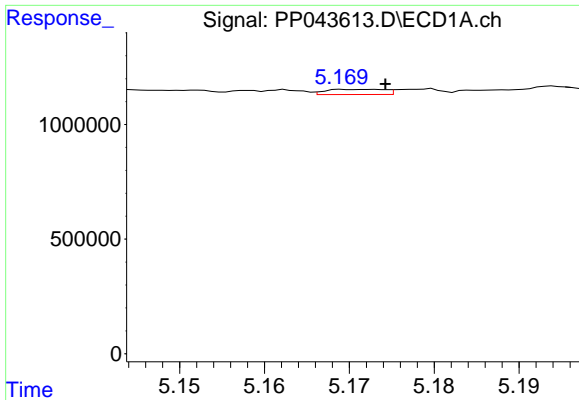
#20 AR-1242-5

R.T.: 6.173 min
 Delta R.T.: 0.002 min
 Response: 2197643
 Conc: 50.89 ng/ml



#20 AR-1242-5

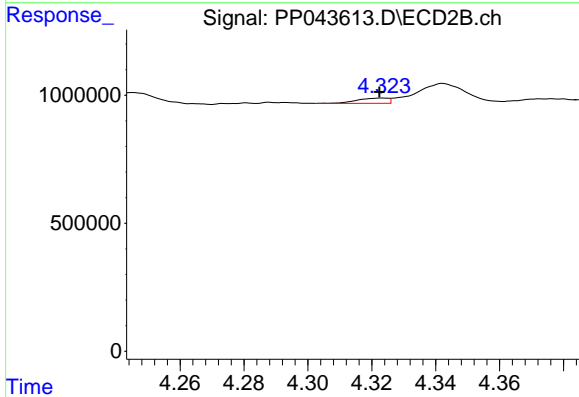
R.T.: 5.180 min
 Delta R.T.: 0.000 min
 Response: 4580143
 Conc: 106.40 ng/ml



#21 AR-1248-1

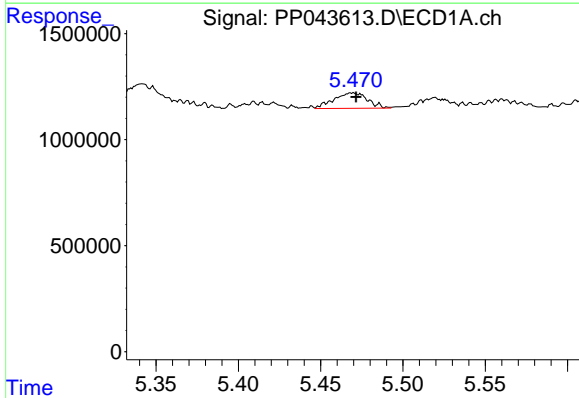
R.T.: 5.173 min
 Delta R.T.: -0.002 min
 Response: 108196
 Conc: 2.64 ng/ml

Instrument :
 ECD_P
 ClientSampleId :
 251488



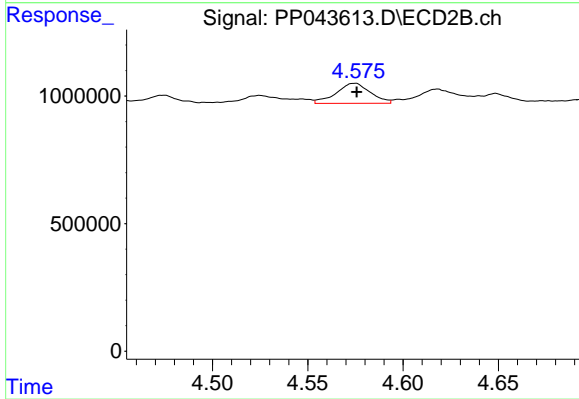
#21 AR-1248-1

R.T.: 4.323 min
 Delta R.T.: 0.000 min
 Response: 135293
 Conc: 3.63 ng/ml



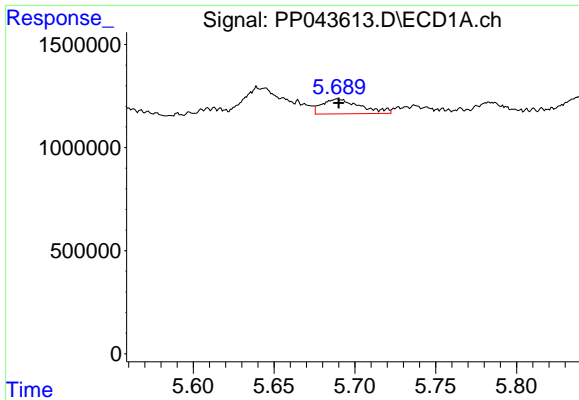
#22 AR-1248-2

R.T.: 5.470 min
 Delta R.T.: -0.002 min
 Response: 1041787
 Conc: 18.34 ng/ml



#22 AR-1248-2

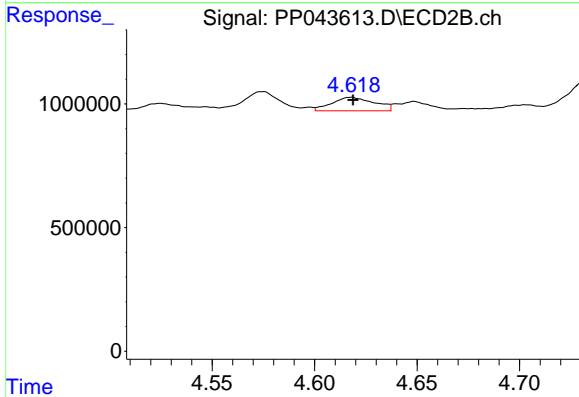
R.T.: 4.575 min
 Delta R.T.: 0.000 min
 Response: 978436
 Conc: 20.00 ng/ml



#23 AR-1248-3

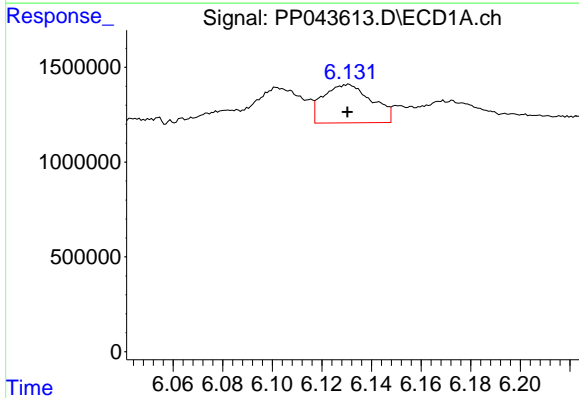
R.T.: 5.689 min
 Delta R.T.: -0.001 min
 Response: 1178499
 Conc: 17.66 ng/ml

Instrument :
 ECD_P
 ClientSampleId :
 251488



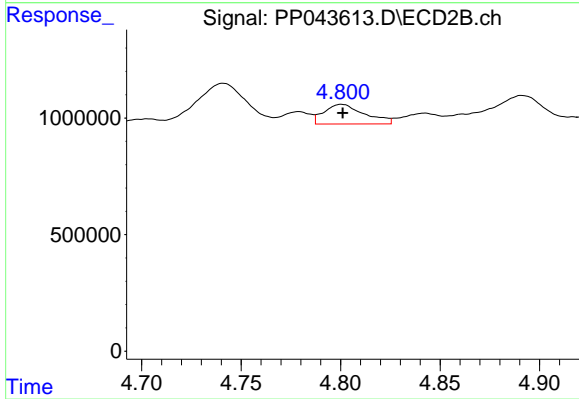
#23 AR-1248-3

R.T.: 4.618 min
 Delta R.T.: 0.000 min
 Response: 793424
 Conc: 15.46 ng/ml



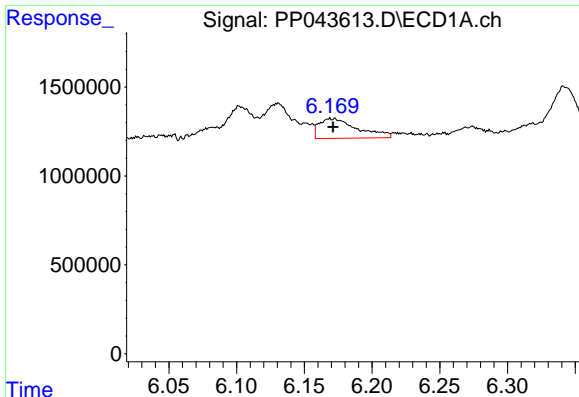
#24 AR-1248-4

R.T.: 6.131 min
 Delta R.T.: 0.000 min
 Response: 2748268
 Conc: 39.34 ng/ml



#24 AR-1248-4

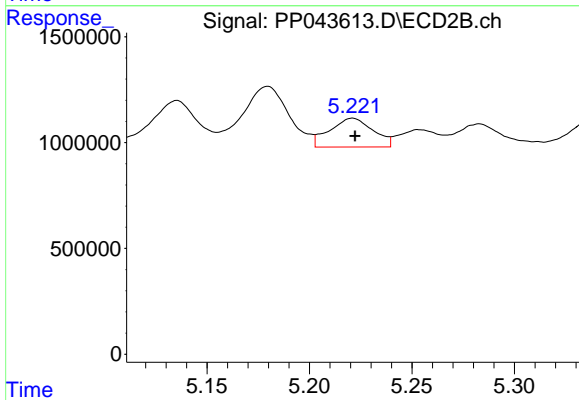
R.T.: 4.800 min
 Delta R.T.: 0.000 min
 Response: 1198116
 Conc: 20.44 ng/ml



#25 AR-1248-5

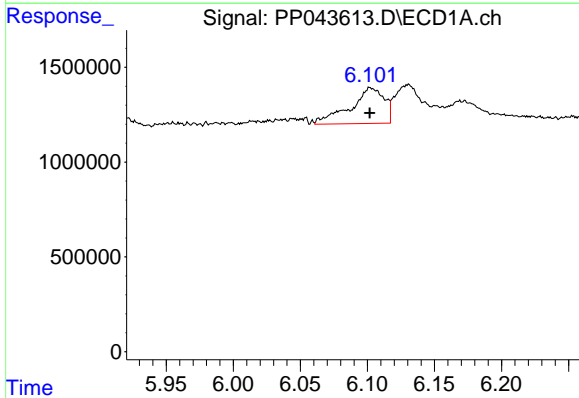
R.T.: 6.173 min
 Delta R.T.: 0.002 min
 Response: 2197643
 Conc: 31.79 ng/ml

Instrument :
 ECD_P
 ClientSampleId :
 251488



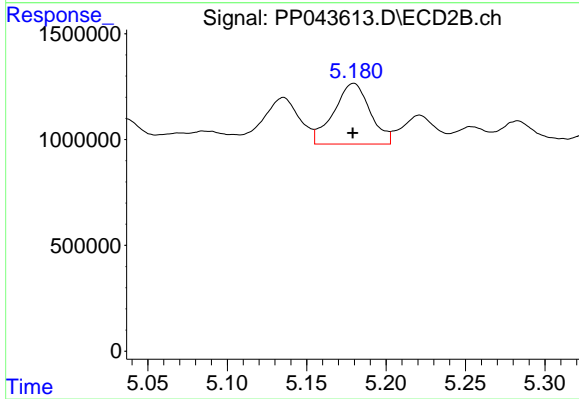
#25 AR-1248-5

R.T.: 5.221 min
 Delta R.T.: -0.001 min
 Response: 2001900
 Conc: 34.94 ng/ml



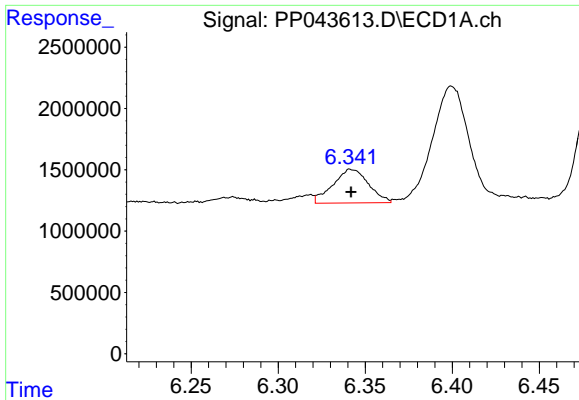
#26 AR-1254-1

R.T.: 6.102 min
 Delta R.T.: 0.000 min
 Response: 3320089
 Conc: 43.94 ng/ml



#26 AR-1254-1

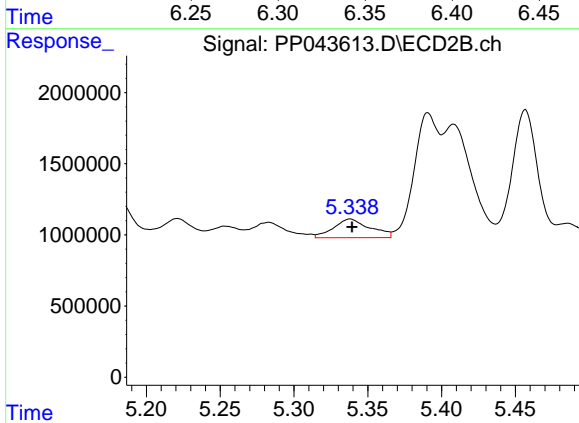
R.T.: 5.180 min
 Delta R.T.: 0.000 min
 Response: 4580143
 Conc: 52.44 ng/ml



#27 AR-1254-2

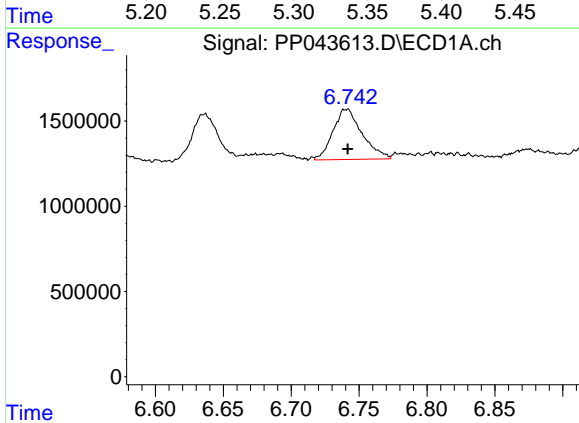
R.T.: 6.341 min
 Delta R.T.: 0.000 min
 Response: 3899796
 Conc: 34.77 ng/ml

Instrument :
 ECD_P
 ClientSampleId :
 251488



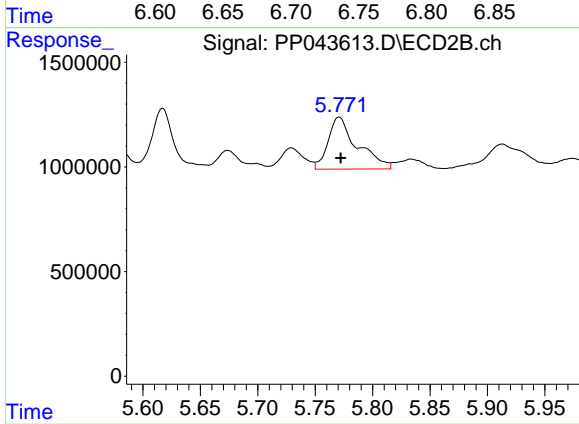
#27 AR-1254-2

R.T.: 5.338 min
 Delta R.T.: -0.001 min
 Response: 2247201
 Conc: 29.46 ng/ml



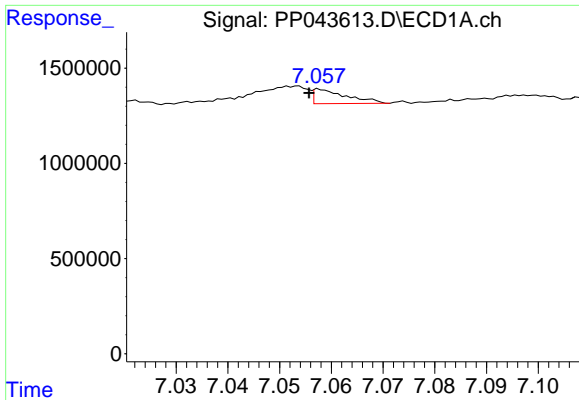
#28 AR-1254-3

R.T.: 6.742 min
 Delta R.T.: 0.000 min
 Response: 4411183
 Conc: 38.12 ng/ml



#28 AR-1254-3

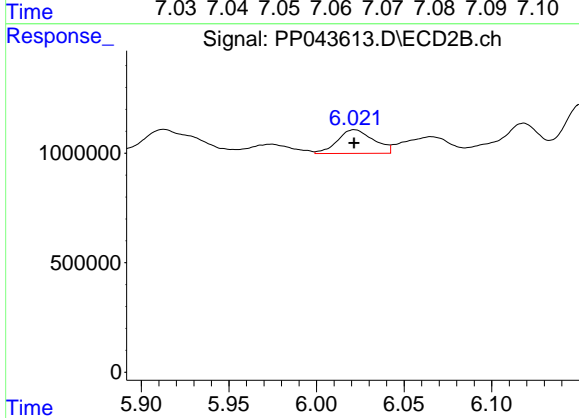
R.T.: 5.771 min
 Delta R.T.: -0.002 min
 Response: 4380959
 Conc: 35.75 ng/ml



#29 AR-1254-4

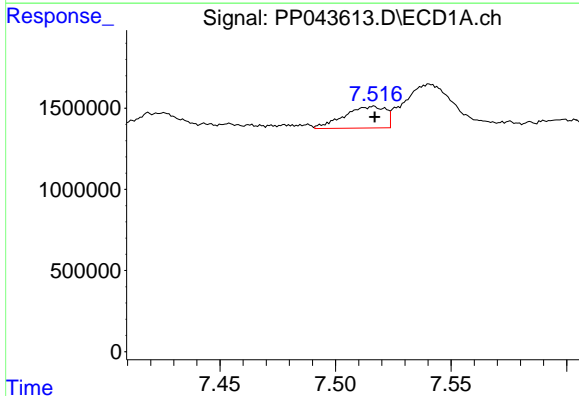
R.T.: 7.058 min
 Delta R.T.: 0.002 min
 Response: 339650
 Conc: 4.25 ng/ml

Instrument :
 ECD_P
 ClientSampleId :
 251488



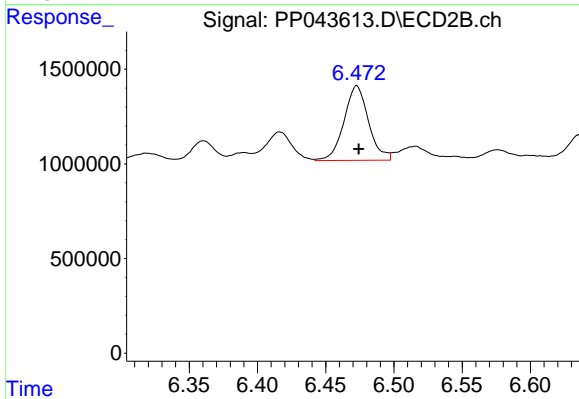
#29 AR-1254-4

R.T.: 6.022 min
 Delta R.T.: 0.000 min
 Response: 1561730
 Conc: 19.79 ng/ml



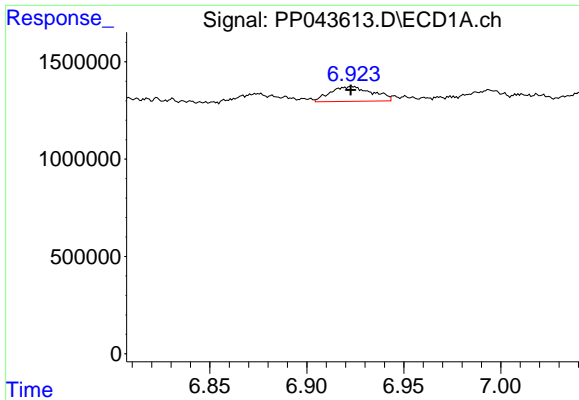
#30 AR-1254-5

R.T.: 7.517 min
 Delta R.T.: 0.000 min
 Response: 1656828
 Conc: 19.32 ng/ml



#30 AR-1254-5

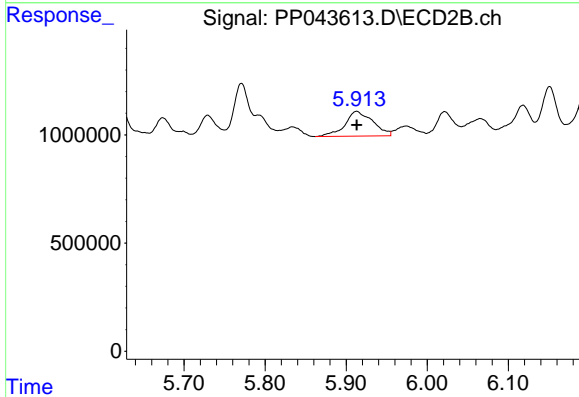
R.T.: 6.473 min
 Delta R.T.: -0.001 min
 Response: 4945129
 Conc: 42.76 ng/ml



#31 AR-1260-1

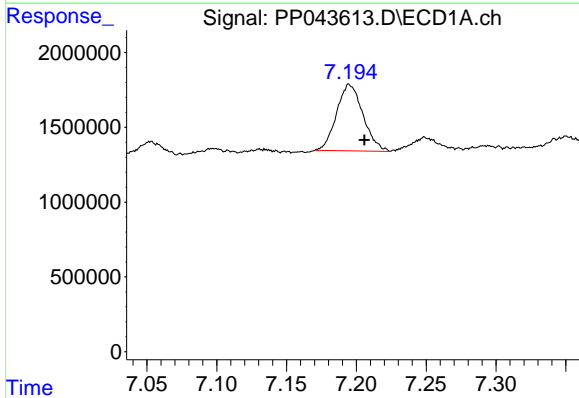
R.T.: 6.923 min
 Delta R.T.: 0.000 min
 Response: 1144290
 Conc: 13.66 ng/ml

Instrument :
 ECD_P
 ClientSampleId :
 251488



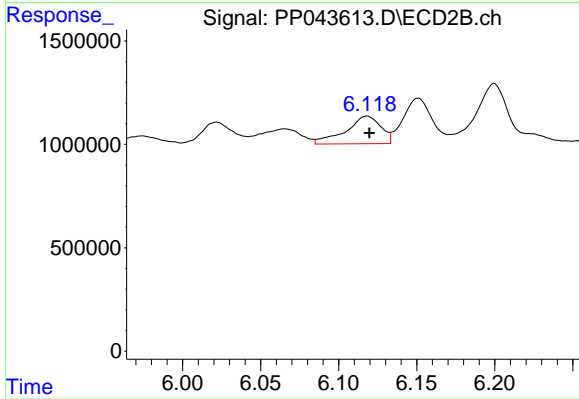
#31 AR-1260-1

R.T.: 5.913 min
 Delta R.T.: 0.000 min
 Response: 2740961
 Conc: 34.27 ng/ml



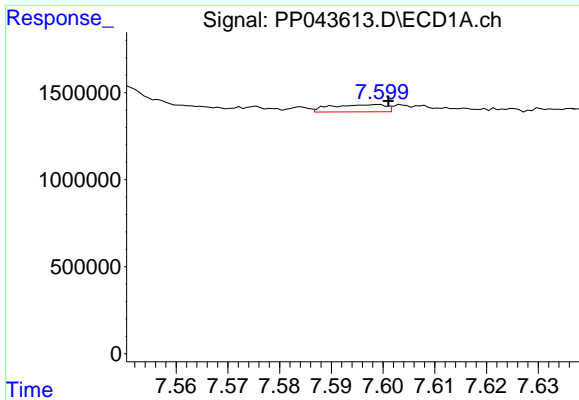
#32 AR-1260-2

R.T.: 7.195 min
 Delta R.T.: -0.011 min
 Response: 5856723
 Conc: 64.70 ng/ml



#32 AR-1260-2

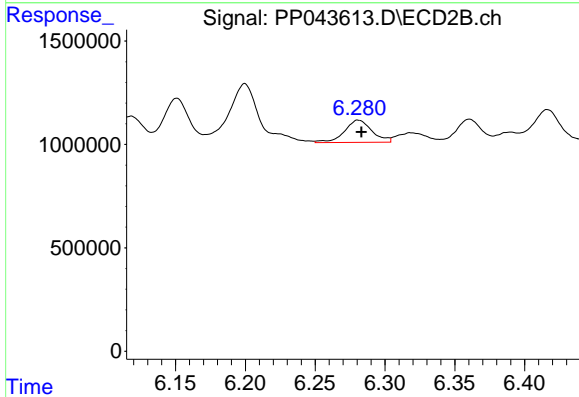
R.T.: 6.118 min
 Delta R.T.: -0.002 min
 Response: 2103889
 Conc: 21.54 ng/ml



#33 AR-1260-3

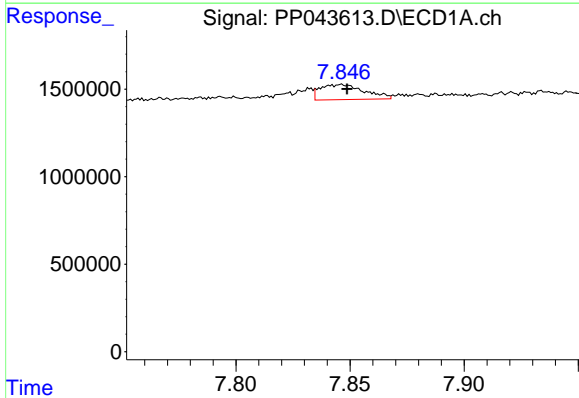
R.T.: 7.599 min
 Delta R.T.: -0.002 min
 Response: 306722
 Conc: 4.23 ng/ml

Instrument :
 ECD_P
 ClientSampleId :
 251488



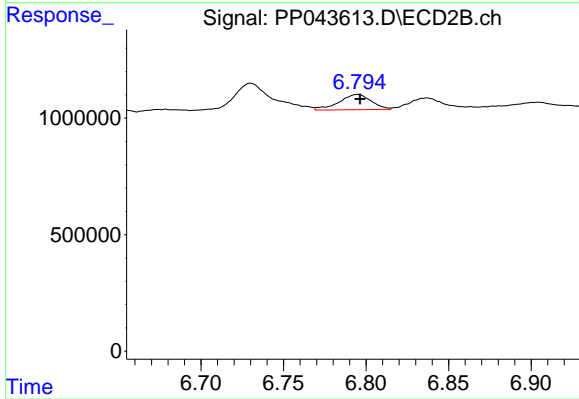
#33 AR-1260-3

R.T.: 6.281 min
 Delta R.T.: -0.002 min
 Response: 1476944
 Conc: 16.18 ng/ml



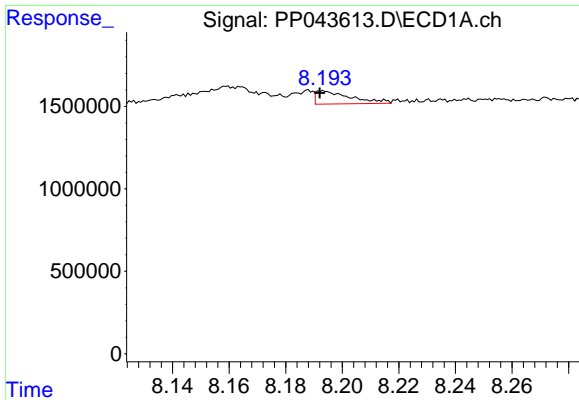
#34 AR-1260-4

R.T.: 7.846 min
 Delta R.T.: -0.002 min
 Response: 1164045
 Conc: 13.56 ng/ml



#34 AR-1260-4

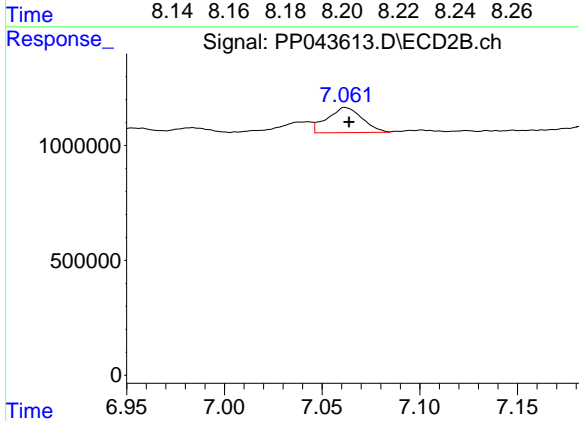
R.T.: 6.795 min
 Delta R.T.: -0.002 min
 Response: 884871
 Conc: 10.94 ng/ml



#35 AR-1260-5

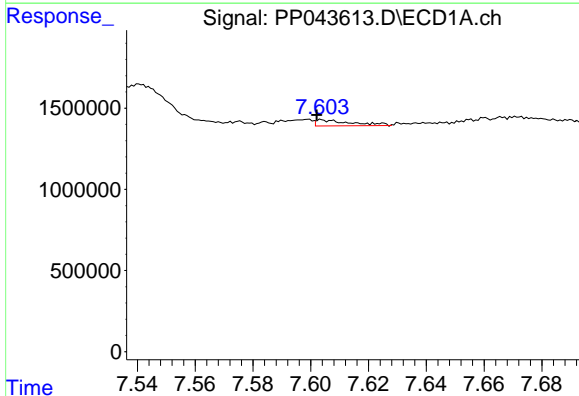
R.T.: 8.193 min
 Delta R.T.: 0.001 min
 Response: 675986
 Conc: 4.36 ng/ml

Instrument :
 ECD_P
 ClientSampleId :
 251488



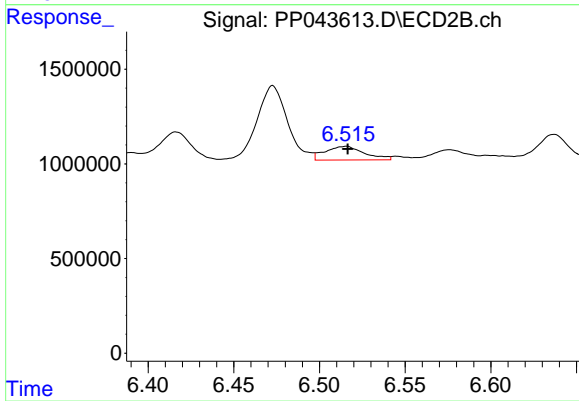
#35 AR-1260-5

R.T.: 7.062 min
 Delta R.T.: -0.002 min
 Response: 1366552
 Conc: 7.39 ng/ml



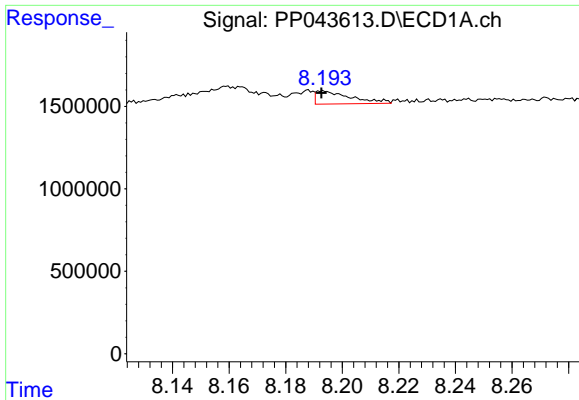
#36 AR-1262-1

R.T.: 7.604 min
 Delta R.T.: 0.002 min
 Response: 314034
 Conc: 3.18 ng/ml



#36 AR-1262-1

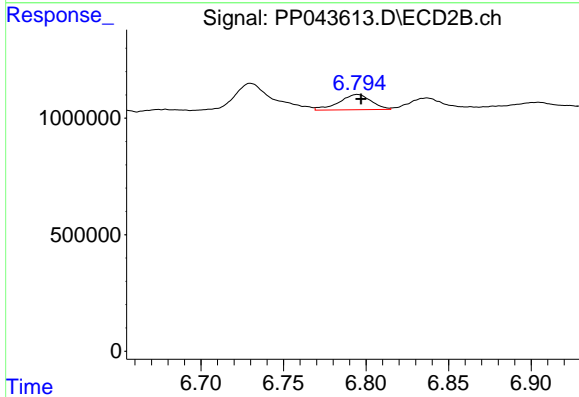
R.T.: 6.516 min
 Delta R.T.: 0.000 min
 Response: 1161460
 Conc: 10.57 ng/ml



#37 AR-1262-2

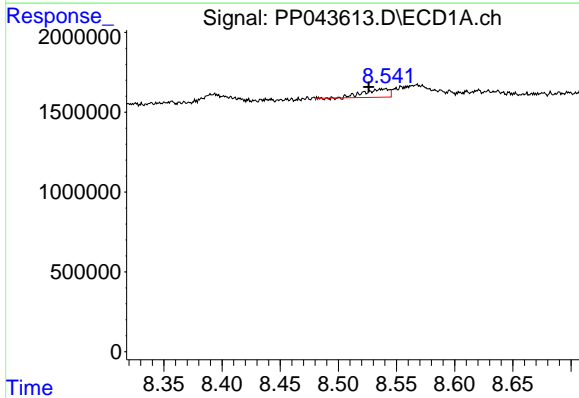
R.T.: 8.193 min
 Delta R.T.: 0.000 min
 Response: 675986
 Conc: 4.19 ng/ml

Instrument :
 ECD_P
 ClientSampleId :
 251488



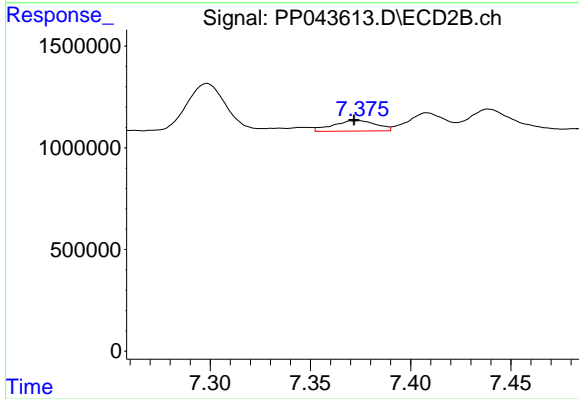
#37 AR-1262-2

R.T.: 6.795 min
 Delta R.T.: -0.002 min
 Response: 884871
 Conc: 8.67 ng/ml



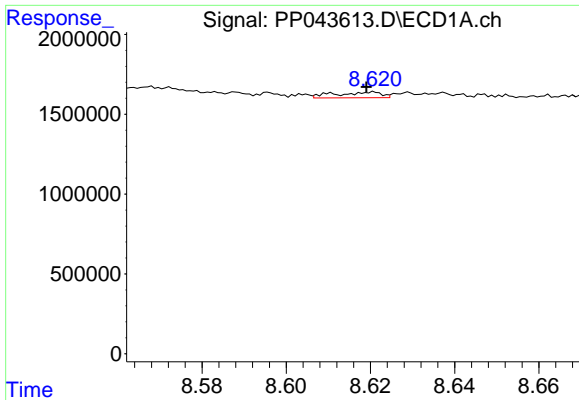
#38 AR-1262-3

R.T.: 8.540 min
 Delta R.T.: 0.014 min
 Response: 755374
 Conc: 6.90 ng/ml



#38 AR-1262-3

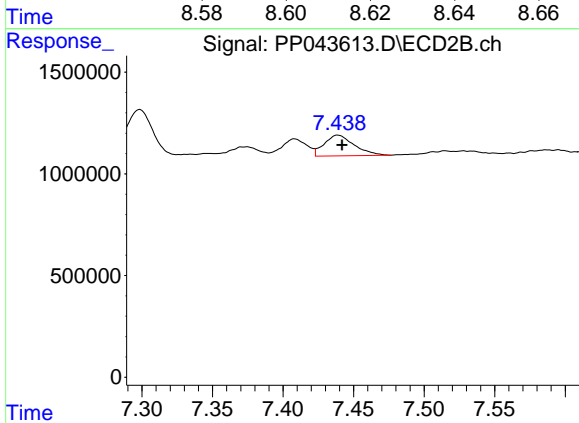
R.T.: 7.374 min
 Delta R.T.: 0.002 min
 Response: 769888
 Conc: 9.03 ng/ml



#39 AR-1262-4

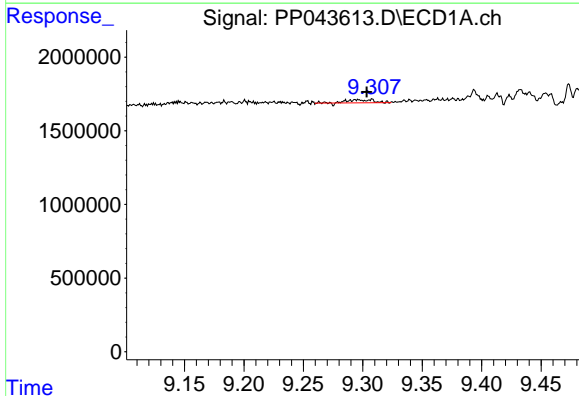
R.T.: 8.620 min
 Delta R.T.: 0.001 min
 Response: 267678
 Conc: 5.58 ng/ml

Instrument :
 ECD_P
 ClientSampleId :
 251488



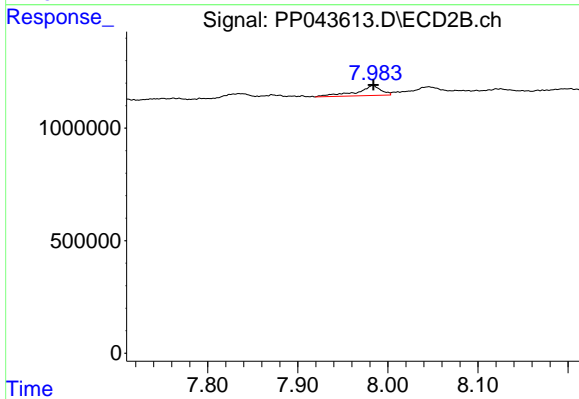
#39 AR-1262-4

R.T.: 7.439 min
 Delta R.T.: -0.003 min
 Response: 1503490
 Conc: 9.68 ng/ml



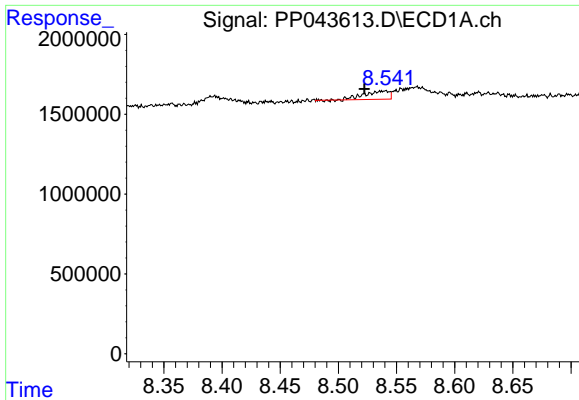
#40 AR-1262-5

R.T.: 9.296 min
 Delta R.T.: -0.008 min
 Response: 309250
 Conc: 5.55 ng/ml



#40 AR-1262-5

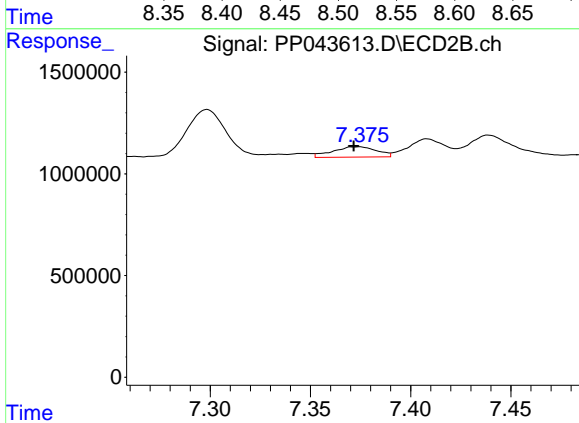
R.T.: 7.983 min
 Delta R.T.: 0.000 min
 Response: 824423
 Conc: 10.60 ng/ml



#41 AR-1268-1

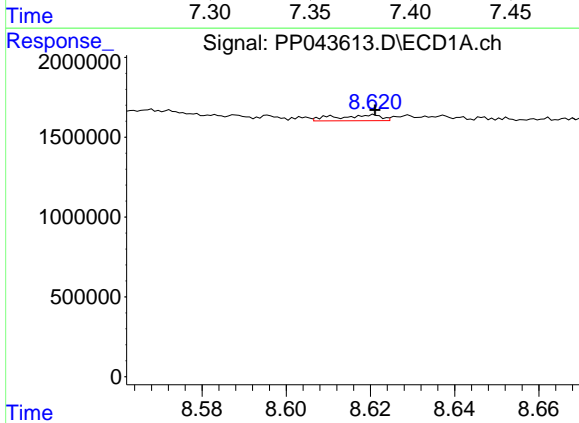
R.T.: 8.540 min
 Delta R.T.: 0.018 min
 Response: 755374
 Conc: 3.88 ng/ml

Instrument :
 ECD_P
 ClientSampleId :
 251488



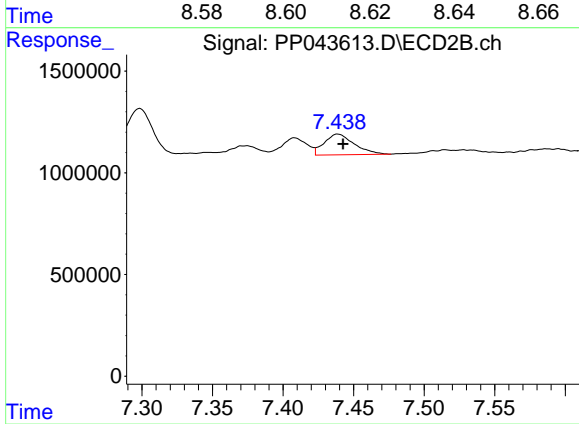
#41 AR-1268-1

R.T.: 7.374 min
 Delta R.T.: 0.003 min
 Response: 769888
 Conc: 3.04 ng/ml



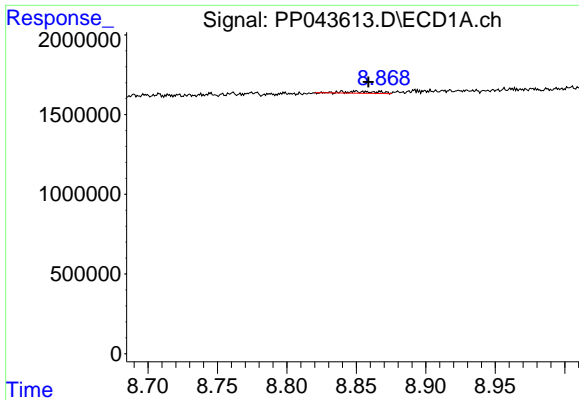
#42 AR-1268-2

R.T.: 8.620 min
 Delta R.T.: 0.000 min
 Response: 267678
 Conc: 1.53 ng/ml



#42 AR-1268-2

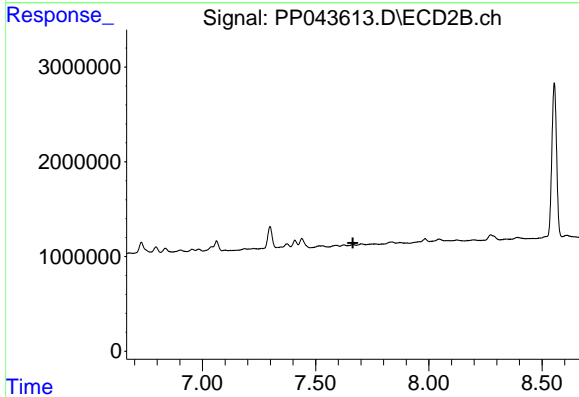
R.T.: 7.439 min
 Delta R.T.: -0.004 min
 Response: 1503490
 Conc: 6.65 ng/ml



#43 AR-1268-3

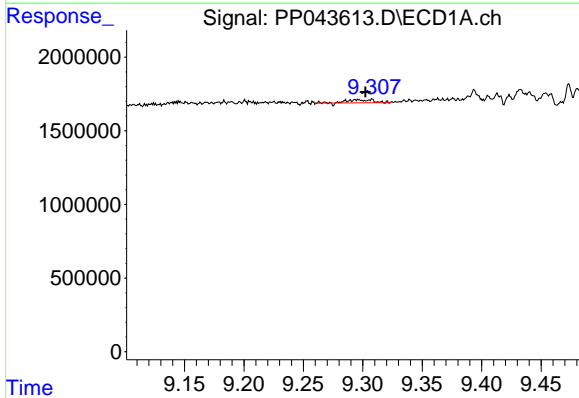
R.T.: 8.840 min
 Delta R.T.: -0.019 min
 Response: 188018
 Conc: 1.22 ng/ml

Instrument :
 ECD_P
 ClientSampleId :
 251488



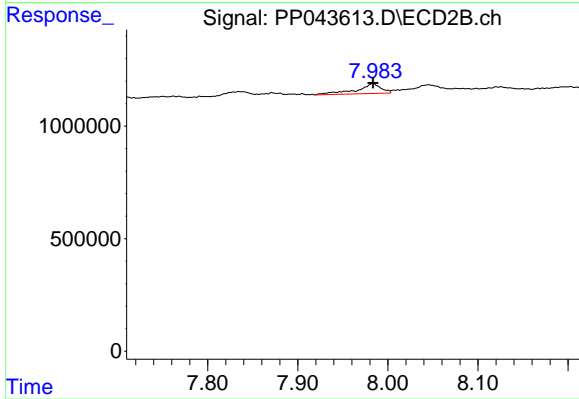
#43 AR-1268-3

R.T.: 7.663 min
 Delta R.T.: -0.002 min
 Response: -1267
 Conc: N.D.



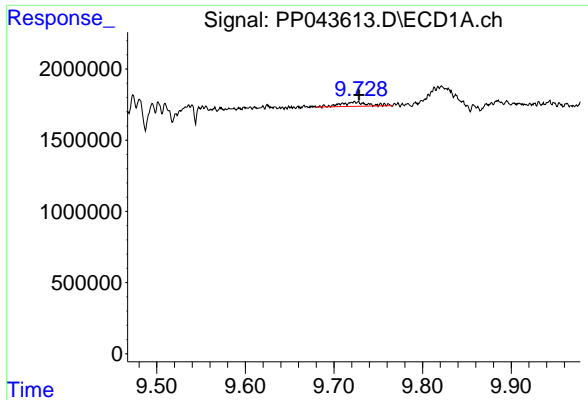
#44 AR-1268-4

R.T.: 9.296 min
 Delta R.T.: -0.007 min
 Response: 309250
 Conc: 4.94 ng/ml



#44 AR-1268-4

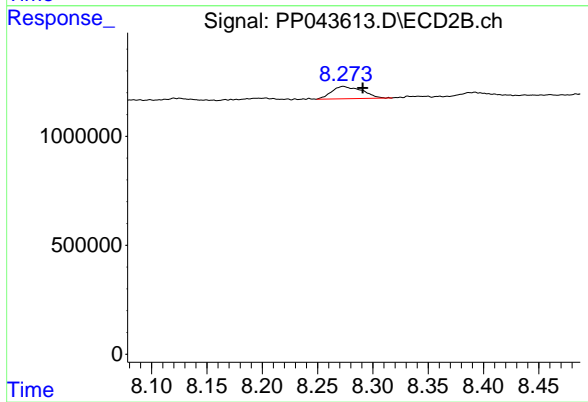
R.T.: 7.983 min
 Delta R.T.: 0.000 min
 Response: 824423
 Conc: 9.17 ng/ml



#45 AR-1268-5

R.T.: 9.723 min
Delta R.T.: -0.005 min
Response: 655463
Conc: 1.44 ng/ml

Instrument :
ECD_P
ClientSampleId :
251488



#45 AR-1268-5

R.T.: 8.273 min
Delta R.T.: -0.018 min
Response: 1081368
Conc: 1.80 ng/ml