

Data Path : Z:\pestpcbsrv\HPCHEM1\ECD\_P\Data\PP021122\  
 Data File : PP043639.D  
 Signal(s) : Signal #1: ECD1A.ch Signal #2: ECD2B.ch  
 Acq On : 12 Feb 2022 00:09  
 Operator : YP\AJ  
 Sample : AR1242CCC500  
 Misc :  
 ALS Vial : 4 Sample Multiplier: 1

Instrument :  
 ECD\_P  
 ClientSampleId :  
 AR1242CCC500

Integration File signal 1: autoint1.e  
 Integration File signal 2: autoint2.e  
 Quant Time: Feb 12 04:56:32 2022  
 Quant Method : Z:\pestpcbsrv\HPCHEM1\ECD\_P\methods\PP021022.M  
 Quant Title : GC EXTRACTABLES  
 QLast Update : Fri Feb 11 04:48:05 2022  
 Response via : Initial Calibration  
 Integrator: ChemStation

Volume Inj. : 2 µl  
 Signal #1 Phase : ZB-MR2 Signal #2 Phase: ZB-MR2  
 Signal #1 Info : 30Mx0.32mmx 0.50µ Signal #2 Info : 30M x 0.32mm x 0.25µm

Compound	RT#1	RT#2	Resp#1	Resp#2	ng/ml	ng/ml
System Monitoring Compounds						
1) SA Tetrachlo...	3.918	3.174	117.1E6	97278328	52.981	51.791
2) SA Decachlor...	10.070	8.553	66730409	84552422	56.176	52.116
Target Compounds						
3) L1 AR-1016-1	5.173	4.322	28157320	24311678	388.044	396.800
4) L1 AR-1016-2	5.196	4.341	41005567	33691699	388.786	398.770
5) L1 AR-1016-3	5.263	4.526	25711403	19216498	390.483	411.339
6) L1 AR-1016-4	5.368	4.575	21524643	14650279	396.912	392.023
7) L1 AR-1016-5	5.689	4.801	22092620	16819426	420.588	368.180
8) L2 AR-1221-1	4.141	3.402	3257227	3181965	127.939	133.396
9) L2 AR-1221-2	4.238	3.491	5003797	4765722	260.637	263.882
10) L2 AR-1221-3	4.317	3.571	17634755	16106871	306.980	312.224
11) L3 AR-1232-1	4.317	3.571	17634755	16106871	363.364	374.359
12) L3 AR-1232-2	4.883	4.341	22748766	33691699	959.979	943.802
13) L3 AR-1232-3	5.196	4.526	41005567	19216498	952.429	982.732
14) L3 AR-1232-4	5.368	4.618	21524643	18444992	986.089	1066.656
15) L3 AR-1232-5	5.471	4.801	16629918	16819426	1031.044	895.404
16) L4 AR-1242-1	5.173	4.322	28157320	24311678	501.093	498.722
17) L4 AR-1242-2	5.196	4.341	41005567	33691699	495.631	500.360
18) L4 AR-1242-3	5.263	4.526	25711403	19216498	496.743	511.915
19) L4 AR-1242-4	5.368	4.618	21524643	18444992	503.943	510.807
20) L4 AR-1242-5	6.170	5.178	22145091	22995941	512.832	534.194
21) L5 AR-1248-1	5.173	4.322	28157320	24311678	686.804	652.658
22) L5 AR-1248-2	5.471	4.575	16629918	14650279	292.714	299.466
23) L5 AR-1248-3	5.689	4.618	22092620	18444992	331.143	359.445
24) L5 AR-1248-4	6.129	4.801	20234110	16819426	289.609	286.894
25) L5 AR-1248-5	6.170	5.221	22145091	20621715	320.335	359.906
26) L6 AR-1254-1	6.098	5.178	14547313	22995941	192.536	263.315 #
27) L6 AR-1254-2	6.341	5.338	19212046	8263094	171.278	108.330 #
28) L6 AR-1254-3	6.740	5.771	9760458	9582282	84.351	78.186
29) L6 AR-1254-4	7.054	6.020	7019027	7406548	87.921	93.843
30) L6 AR-1254-5	7.515	6.473	1706885	3421594	19.902	29.587 #
31) L7 AR-1260-1	6.922	5.925	2151147	4160236	25.688	52.022 #
32) L7 AR-1260-2	7.203	6.118	671408	1701214	7.417	17.421 #
33) L7 AR-1260-3	7.598	6.279	67837	2624208	0.936	28.745 #
34) L7 AR-1260-4	7.832f	6.798	1276948	393761	14.873	4.867 #
35) L7 AR-1260-5	8.186	7.062	221478	314829	1.429	1.703
36) L8 AR-1262-1	7.598	0.000	67837	0	0.687	N.D. #
37) L8 AR-1262-2	8.186	6.798	221478	393761	1.372	3.860 #
38) L8 AR-1262-3	8.532	7.392f	314452	135606	2.874	1.591 #
39) L8 AR-1262-4	8.595f	7.437	792569	287841	16.527	1.853 #
40) L8 AR-1262-5	9.281f	7.989	105256	222764	1.890	2.864 #
41) L9 AR-1268-1	8.532	7.392f	314452	135606	1.613	0.535 #

Data Path : Z:\pestpcbsrv\HPCHEM1\ECD\_P\Data\PP021122\  
 Data File : PP043639.D  
 Signal(s) : Signal #1: ECD1A.ch Signal #2: ECD2B.ch  
 Acq On : 12 Feb 2022 00:09  
 Operator : YP\AJ  
 Sample : AR1242CCC500  
 Misc :  
 ALS Vial : 4 Sample Multiplier: 1

Instrument :  
 ECD\_P  
 ClientSampleId :  
 AR1242CCC500

Integration File signal 1: autoint1.e  
 Integration File signal 2: autoint2.e  
 Quant Time: Feb 12 04:56:32 2022  
 Quant Method : Z:\pestpcbsrv\HPCHEM1\ECD\_P\methods\PP021022.M  
 Quant Title : GC EXTRACTABLES  
 QLast Update : Fri Feb 11 04:48:05 2022  
 Response via : Initial Calibration  
 Integrator: ChemStation

Volume Inj. : 2 µl  
 Signal #1 Phase : ZB-MR1 Signal #2 Phase: ZB-MR2  
 Signal #1 Info : 30Mx0.32mmx 0.50µ Signal #2 Info : 30M x 0.32mm x 0.25µm

	Compound	RT#1	RT#2	Resp#1	Resp#2	ng/ml	ng/ml
42)	L9 AR-1268-2	8.595f	7.437	792569	287841	4.528	1.274 #
43)	L9 AR-1268-3	8.866	7.664	332700	231016	2.155	1.186 #
44)	L9 AR-1268-4	9.281f	7.989	105256	222764	1.682	2.477 #
45)	L9 AR-1268-5	9.727	8.289	284018	650810	0.625	1.083 #

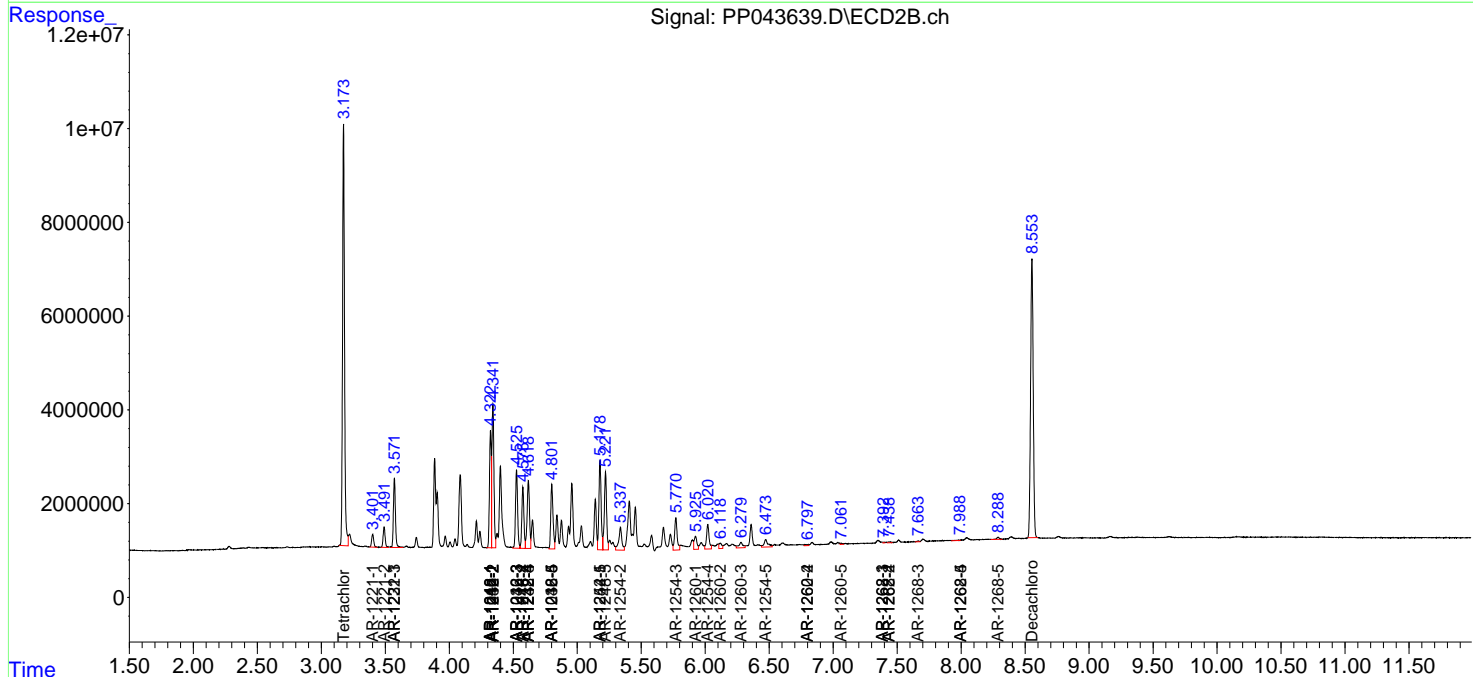
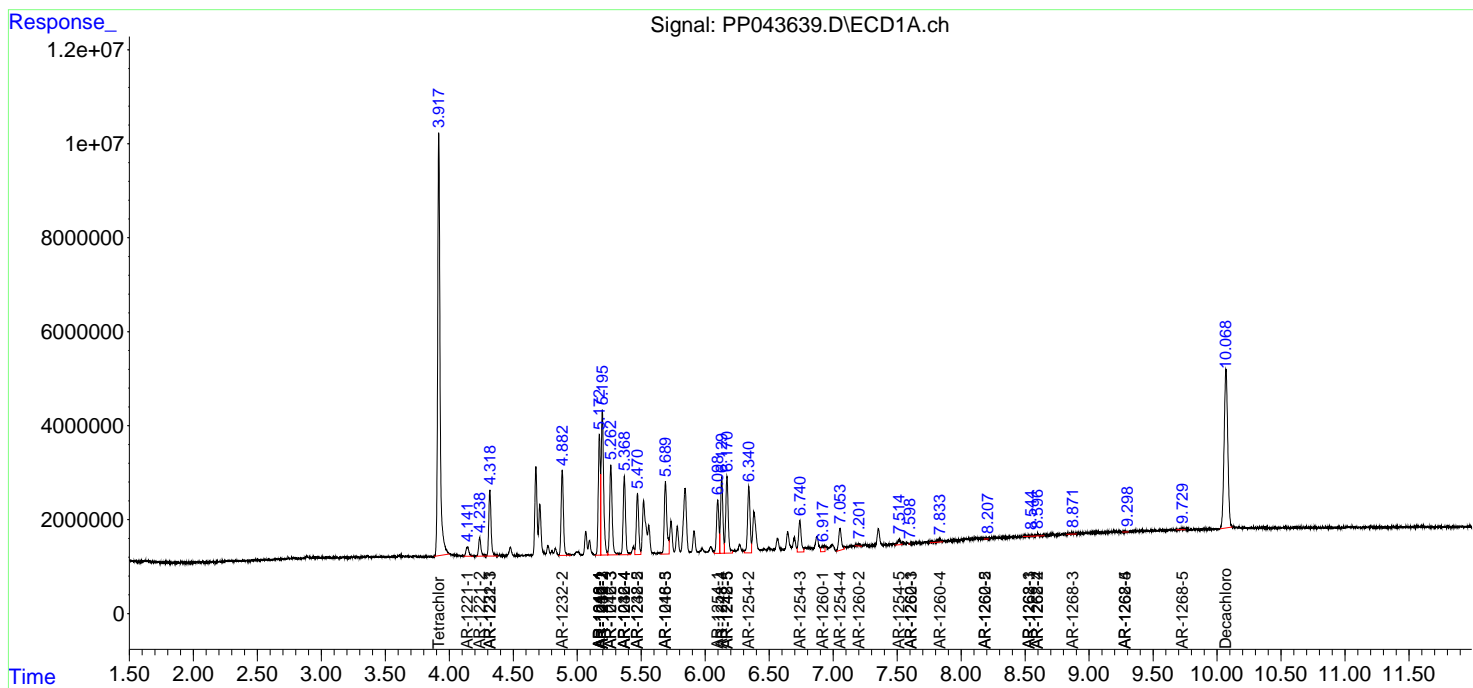
(f)=RT Delta > 1/2 Window (#)=Amounts differ by > 25% (m)=manual int.

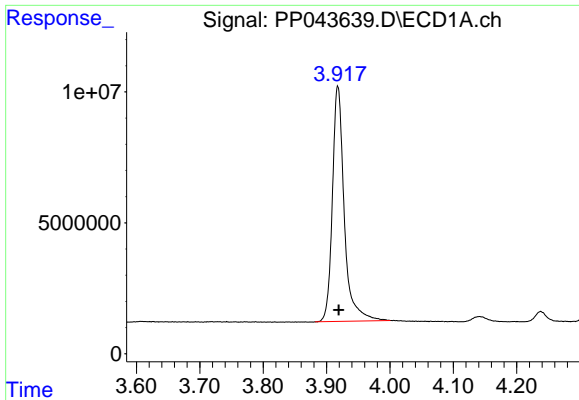
Data Path : Z:\pestpcbsrv\HPCHEM1\ECD\_P\Data\PP021122\  
 Data File : PP043639.D  
 Signal(s) : Signal #1: ECD1A.ch Signal #2: ECD2B.ch  
 Acq On : 12 Feb 2022 00:09  
 Operator : YP\AJ  
 Sample : AR1242CCC500  
 Misc :  
 ALS Vial : 4 Sample Multiplier: 1

Instrument :  
 ECD\_P  
 ClientSampleId :  
 AR1242CCC500

Integration File signal 1: autoint1.e  
 Integration File signal 2: autoint2.e  
 Quant Time: Feb 12 04:56:32 2022  
 Quant Method : Z:\pestpcbsrv\HPCHEM1\ECD\_P\methods\PP021022.M  
 Quant Title : GC EXTRACTABLES  
 QLast Update : Fri Feb 11 04:48:05 2022  
 Response via : Initial Calibration  
 Integrator: ChemStation

Volume Inj. : 2 µl  
 Signal #1 Phase : ZB-MR1 Signal #2 Phase: ZB-MR2  
 Signal #1 Info : 30Mx0.32mmx 0.50µ Signal #2 Info : 30M x 0.32mm x 0.25µm

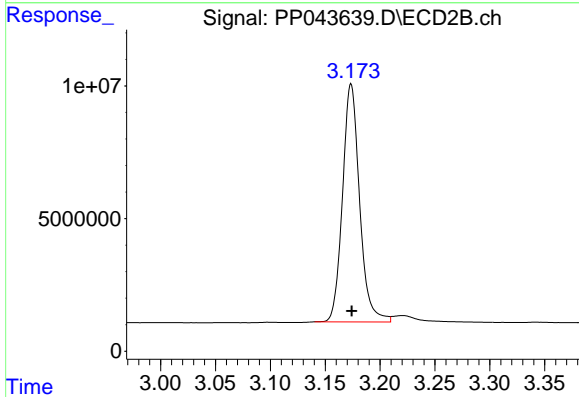




#1 Tetrachloro-m-xylene

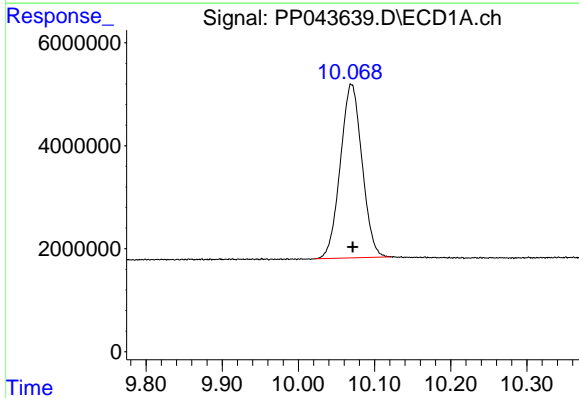
R.T.: 3.918 min  
 Delta R.T.: -0.001 min  
 Response: 117144257  
 Conc: 52.98 ng/ml

Instrument :  
 ECD\_P  
 ClientSampleId :  
 AR1242CCC500



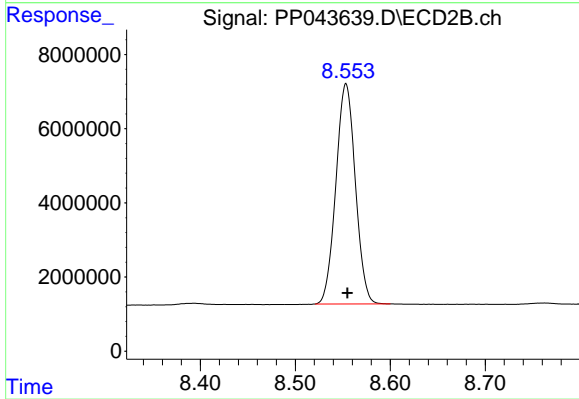
#1 Tetrachloro-m-xylene

R.T.: 3.174 min  
 Delta R.T.: 0.000 min  
 Response: 97278328  
 Conc: 51.79 ng/ml



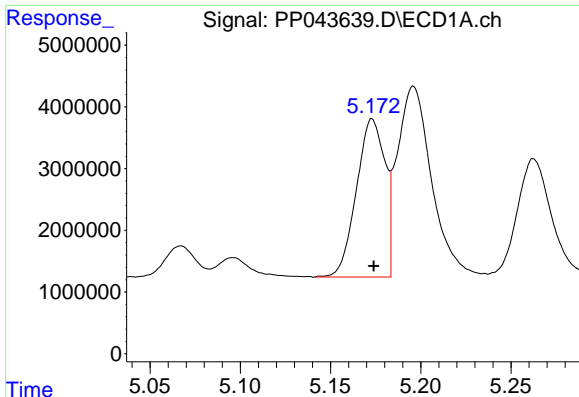
#2 Decachlorobiphenyl

R.T.: 10.070 min  
 Delta R.T.: -0.002 min  
 Response: 66730409  
 Conc: 56.18 ng/ml



#2 Decachlorobiphenyl

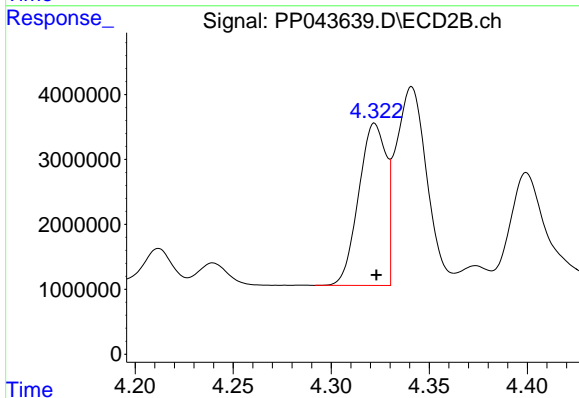
R.T.: 8.553 min  
 Delta R.T.: -0.001 min  
 Response: 84552422  
 Conc: 52.12 ng/ml



#3 AR-1016-1

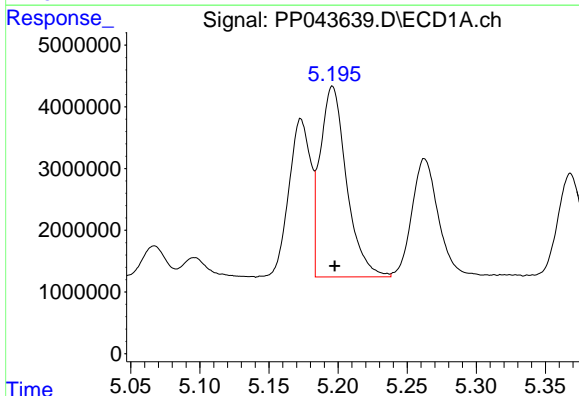
R.T.: 5.173 min  
 Delta R.T.: 0.000 min  
 Response: 28157320  
 Conc: 388.04 ng/ml

Instrument :  
 ECD\_P  
 ClientSampleId :  
 AR1242CCC500



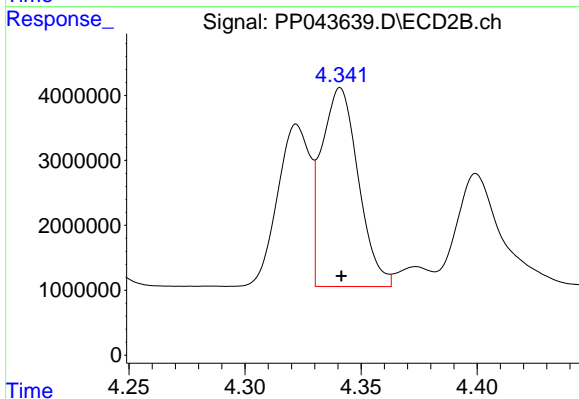
#3 AR-1016-1

R.T.: 4.322 min  
 Delta R.T.: 0.000 min  
 Response: 24311678  
 Conc: 396.80 ng/ml



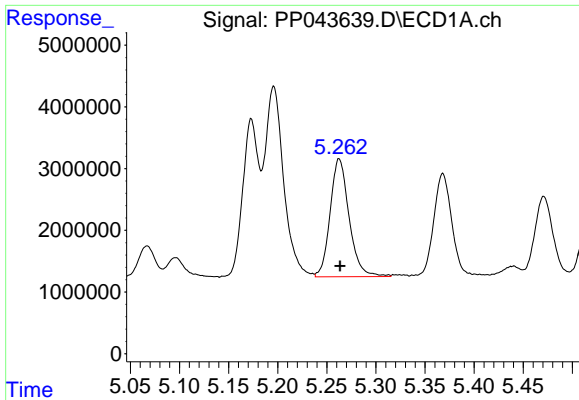
#4 AR-1016-2

R.T.: 5.196 min  
 Delta R.T.: -0.002 min  
 Response: 41005567  
 Conc: 388.79 ng/ml



#4 AR-1016-2

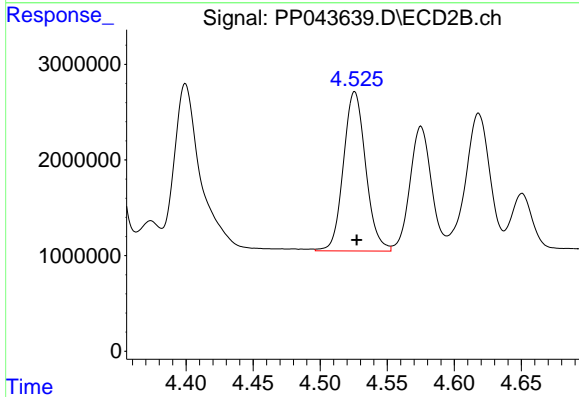
R.T.: 4.341 min  
 Delta R.T.: 0.000 min  
 Response: 33691699  
 Conc: 398.77 ng/ml



#5 AR-1016-3

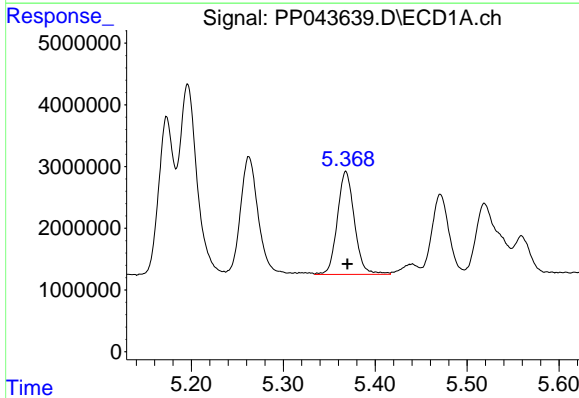
R.T.: 5.263 min  
 Delta R.T.: 0.000 min  
 Response: 25711403  
 Conc: 390.48 ng/ml

Instrument :  
 ECD\_P  
 ClientSampleId :  
 AR1242CCC500



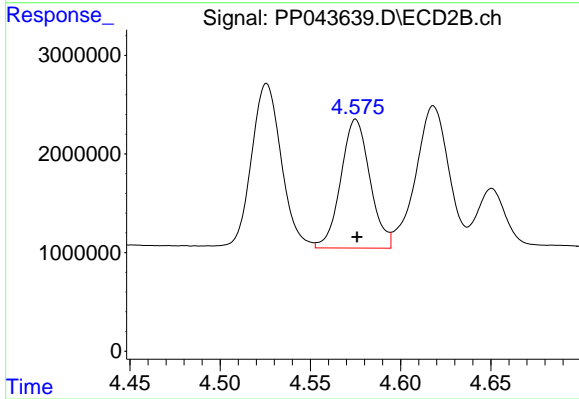
#5 AR-1016-3

R.T.: 4.526 min  
 Delta R.T.: -0.002 min  
 Response: 19216498  
 Conc: 411.34 ng/ml



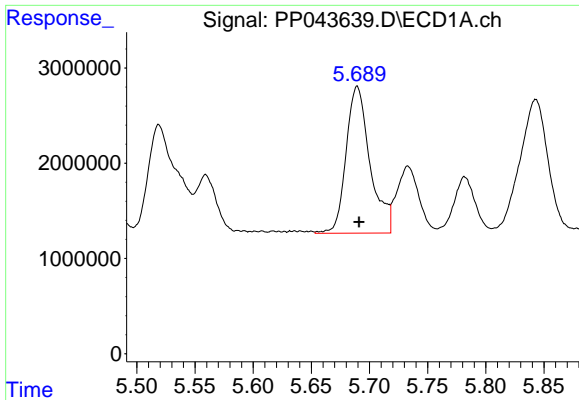
#6 AR-1016-4

R.T.: 5.368 min  
 Delta R.T.: -0.002 min  
 Response: 21524643  
 Conc: 396.91 ng/ml



#6 AR-1016-4

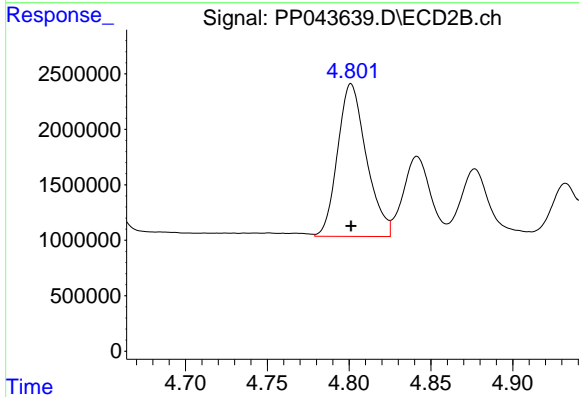
R.T.: 4.575 min  
 Delta R.T.: 0.000 min  
 Response: 14650279  
 Conc: 392.02 ng/ml



#7 AR-1016-5

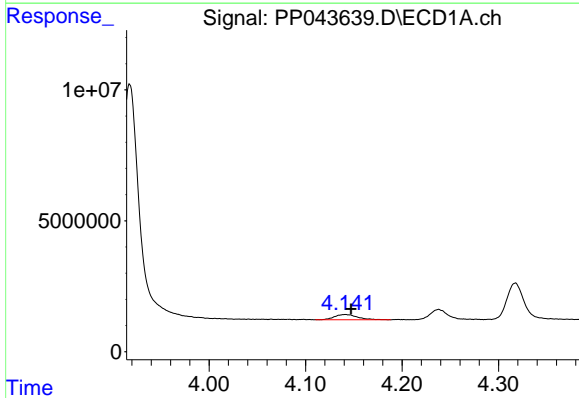
R.T.: 5.689 min  
 Delta R.T.: -0.002 min  
 Response: 22092620  
 Conc: 420.59 ng/ml

Instrument :  
 ECD\_P  
 ClientSampleId :  
 AR1242CCC500



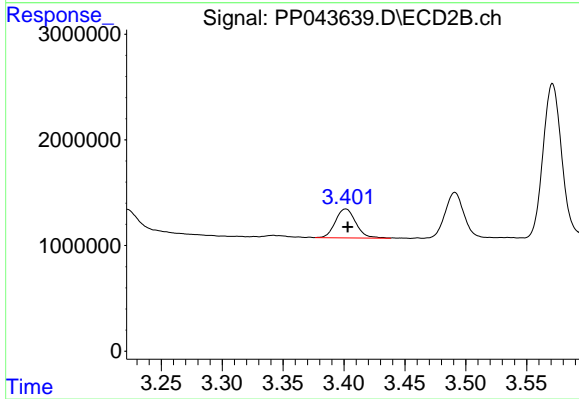
#7 AR-1016-5

R.T.: 4.801 min  
 Delta R.T.: 0.000 min  
 Response: 16819426  
 Conc: 368.18 ng/ml



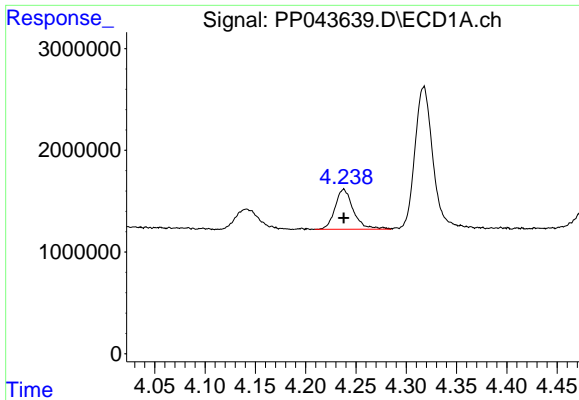
#8 AR-1221-1

R.T.: 4.141 min  
 Delta R.T.: -0.006 min  
 Response: 3257227  
 Conc: 127.94 ng/ml



#8 AR-1221-1

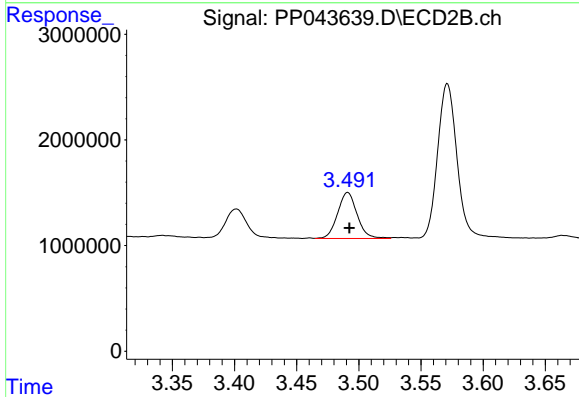
R.T.: 3.402 min  
 Delta R.T.: -0.001 min  
 Response: 3181965  
 Conc: 133.40 ng/ml



#9 AR-1221-2

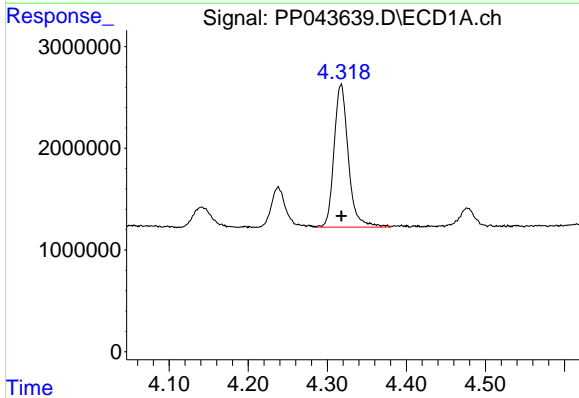
R.T.: 4.238 min  
 Delta R.T.: 0.000 min  
 Response: 5003797  
 Conc: 260.64 ng/ml

Instrument :  
 ECD\_P  
 ClientSampleId :  
 AR1242CCC500



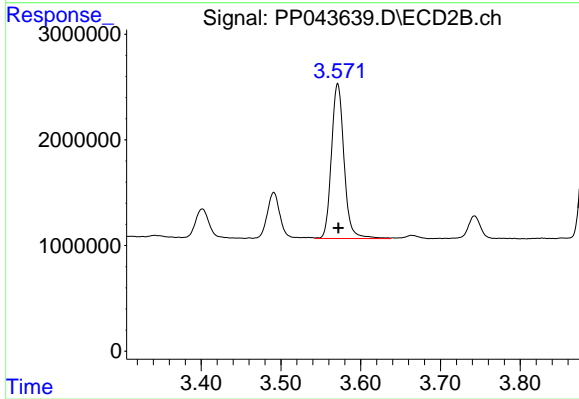
#9 AR-1221-2

R.T.: 3.491 min  
 Delta R.T.: -0.001 min  
 Response: 4765722  
 Conc: 263.88 ng/ml



#10 AR-1221-3

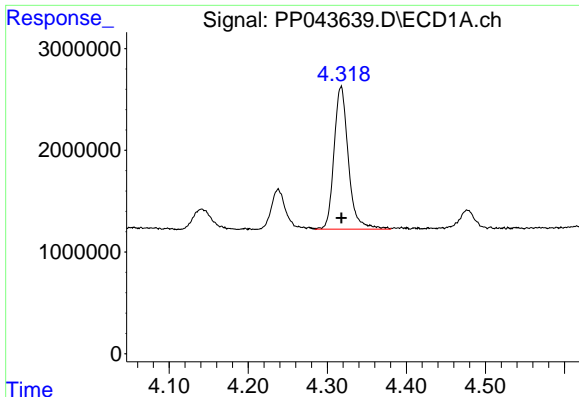
R.T.: 4.317 min  
 Delta R.T.: 0.000 min  
 Response: 17634755  
 Conc: 306.98 ng/ml



#10 AR-1221-3

R.T.: 3.571 min  
 Delta R.T.: 0.000 min  
 Response: 16106871  
 Conc: 312.22 ng/ml

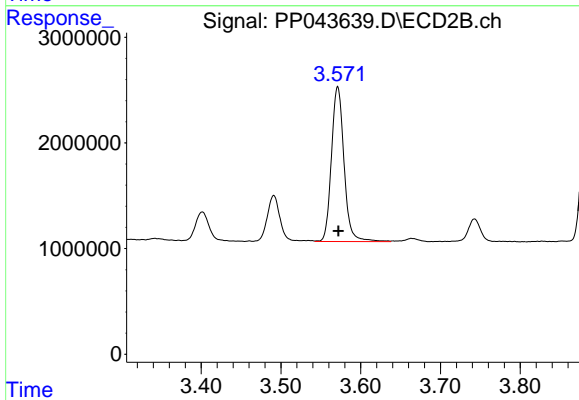




#11 AR-1232-1

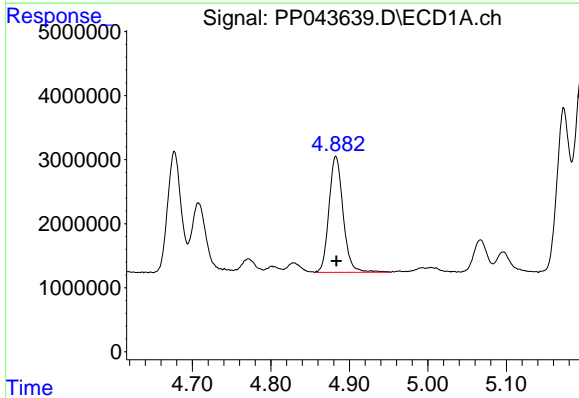
R.T.: 4.317 min  
 Delta R.T.: 0.000 min  
 Response: 17634755  
 Conc: 363.36 ng/ml

Instrument :  
 ECD\_P  
 ClientSampleId :  
 AR1242CCC500



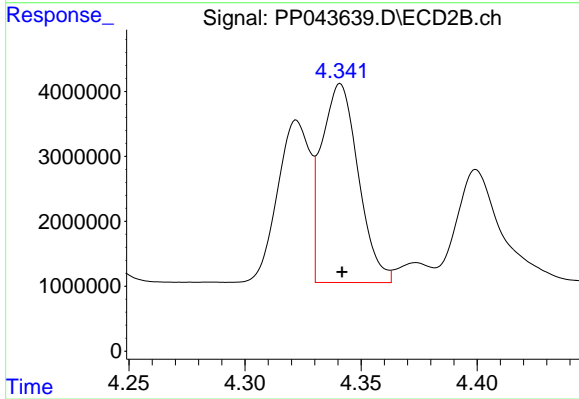
#11 AR-1232-1

R.T.: 3.571 min  
 Delta R.T.: 0.000 min  
 Response: 16106871  
 Conc: 374.36 ng/ml



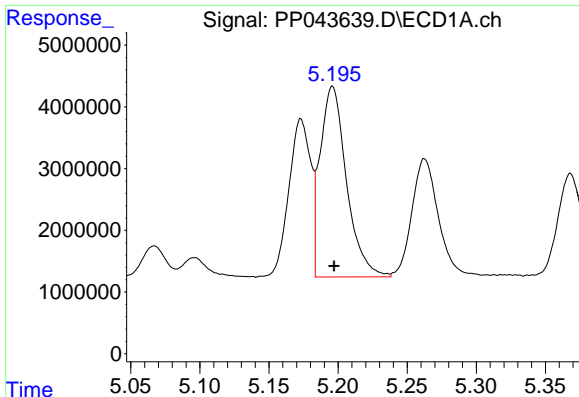
#12 AR-1232-2

R.T.: 4.883 min  
 Delta R.T.: 0.000 min  
 Response: 22748766  
 Conc: 959.98 ng/ml



#12 AR-1232-2

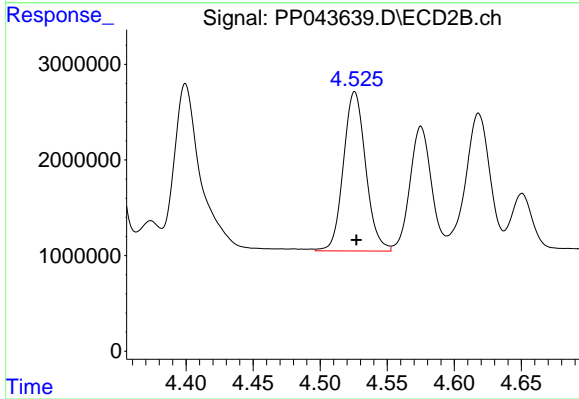
R.T.: 4.341 min  
 Delta R.T.: 0.000 min  
 Response: 33691699  
 Conc: 943.80 ng/ml



#13 AR-1232-3

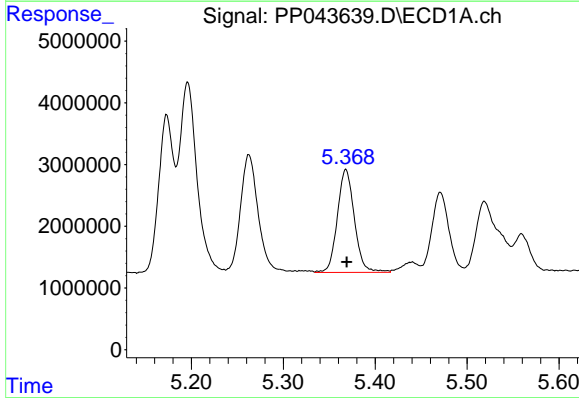
R.T.: 5.196 min  
 Delta R.T.: -0.001 min  
 Response: 41005567  
 Conc: 952.43 ng/ml

Instrument :  
 ECD\_P  
 ClientSampleId :  
 AR1242CCC500



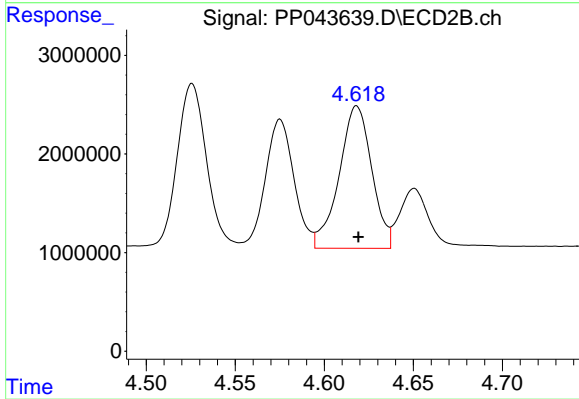
#13 AR-1232-3

R.T.: 4.526 min  
 Delta R.T.: -0.001 min  
 Response: 19216498  
 Conc: 982.73 ng/ml



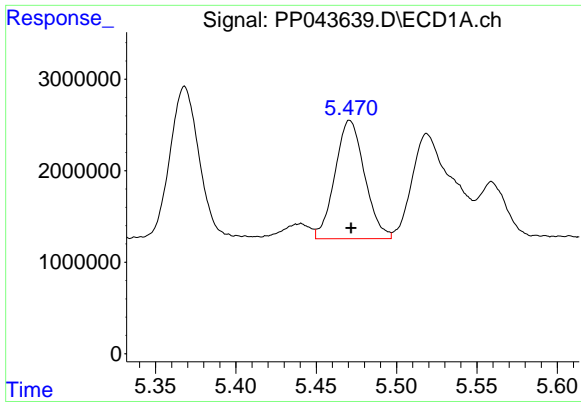
#14 AR-1232-4

R.T.: 5.368 min  
 Delta R.T.: 0.000 min  
 Response: 21524643  
 Conc: 986.09 ng/ml



#14 AR-1232-4

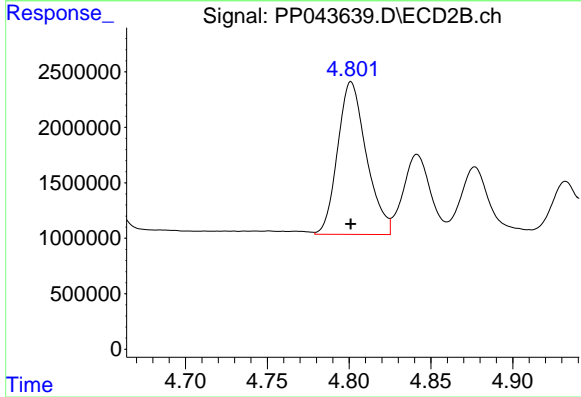
R.T.: 4.618 min  
 Delta R.T.: 0.000 min  
 Response: 18444992  
 Conc: 1066.66 ng/ml



#15 AR-1232-5

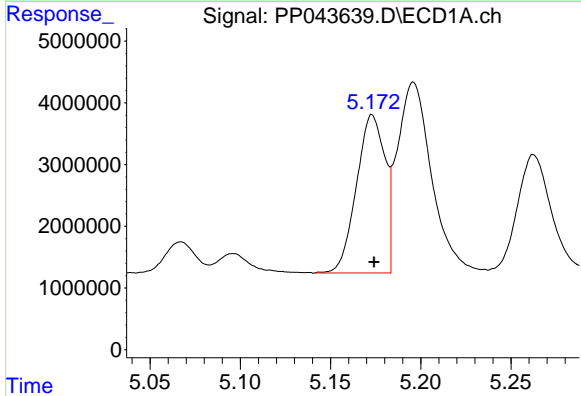
R.T.: 5.471 min  
 Delta R.T.: 0.000 min  
 Response: 16629918  
 Conc: 1031.04 ng/ml

Instrument :  
 ECD\_P  
 ClientSampleId :  
 AR1242CCC500



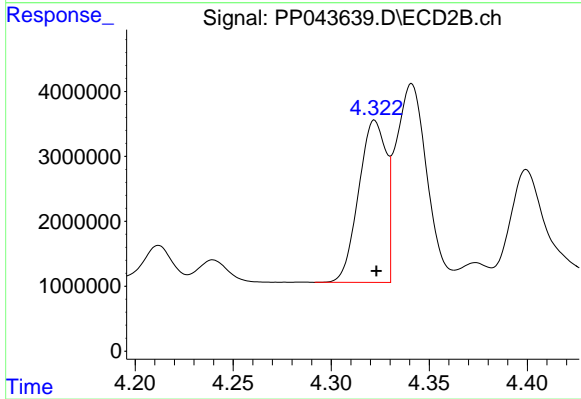
#15 AR-1232-5

R.T.: 4.801 min  
 Delta R.T.: 0.000 min  
 Response: 16819426  
 Conc: 895.40 ng/ml



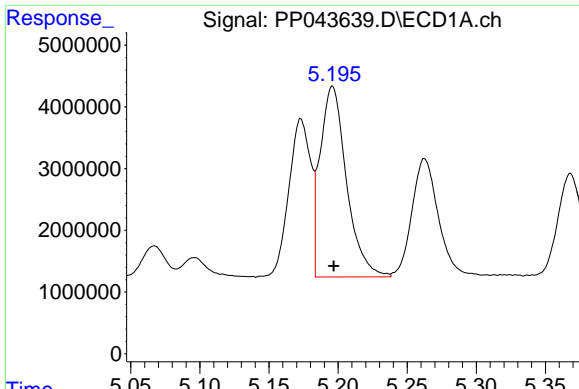
#16 AR-1242-1

R.T.: 5.173 min  
 Delta R.T.: -0.001 min  
 Response: 28157320  
 Conc: 501.09 ng/ml



#16 AR-1242-1

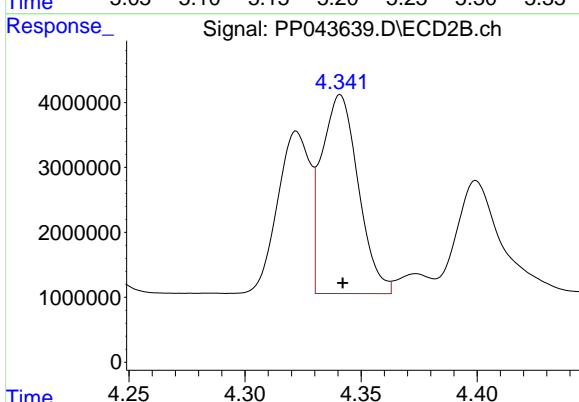
R.T.: 4.322 min  
 Delta R.T.: 0.000 min  
 Response: 24311678  
 Conc: 498.72 ng/ml



#17 AR-1242-2

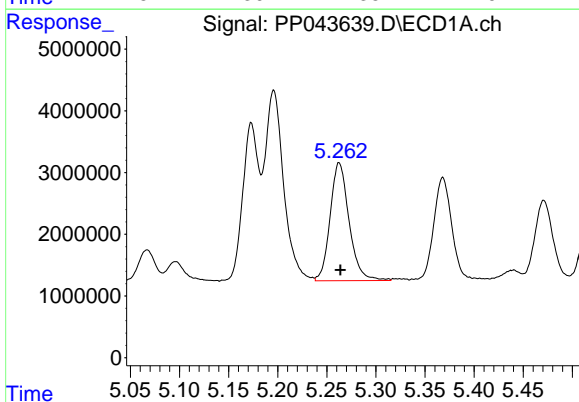
R.T.: 5.196 min  
 Delta R.T.: 0.000 min  
 Response: 41005567  
 Conc: 495.63 ng/ml

**Instrument :**  
 ECD\_P  
**ClientSampleId :**  
 AR1242CCC500



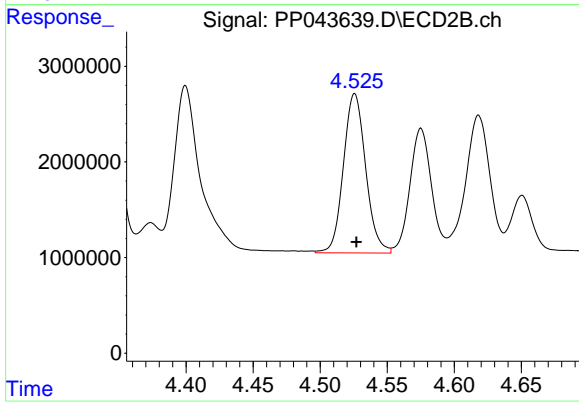
#17 AR-1242-2

R.T.: 4.341 min  
 Delta R.T.: 0.000 min  
 Response: 33691699  
 Conc: 500.36 ng/ml



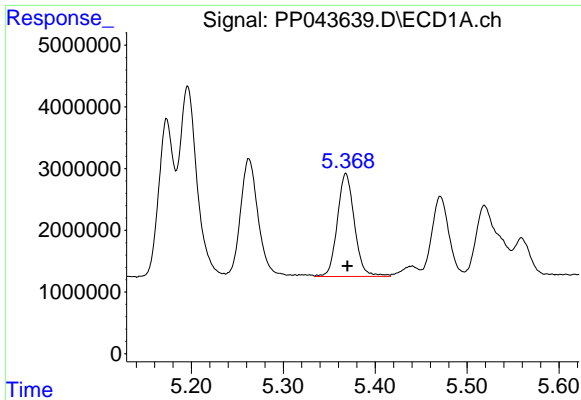
#18 AR-1242-3

R.T.: 5.263 min  
 Delta R.T.: -0.001 min  
 Response: 25711403  
 Conc: 496.74 ng/ml



#18 AR-1242-3

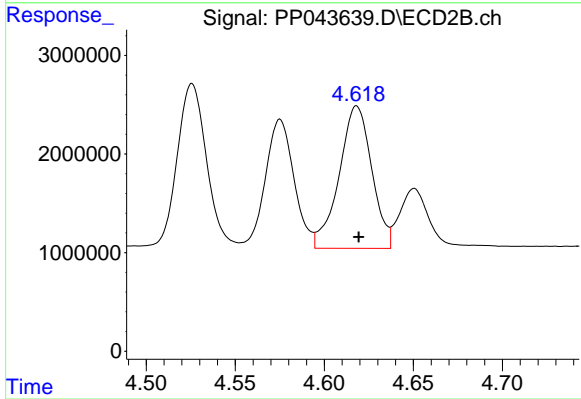
R.T.: 4.526 min  
 Delta R.T.: -0.001 min  
 Response: 19216498  
 Conc: 511.91 ng/ml



#19 AR-1242-4

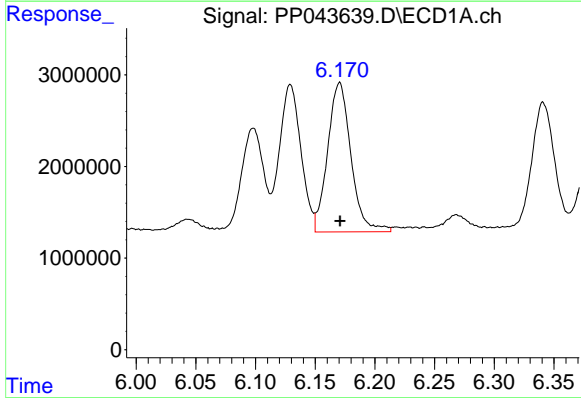
R.T.: 5.368 min  
 Delta R.T.: -0.002 min  
 Response: 21524643  
 Conc: 503.94 ng/ml

Instrument :  
 ECD\_P  
 ClientSampleId :  
 AR1242CCC500



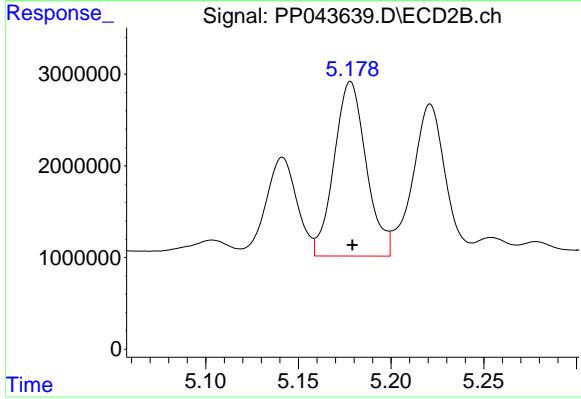
#19 AR-1242-4

R.T.: 4.618 min  
 Delta R.T.: -0.001 min  
 Response: 18444992  
 Conc: 510.81 ng/ml



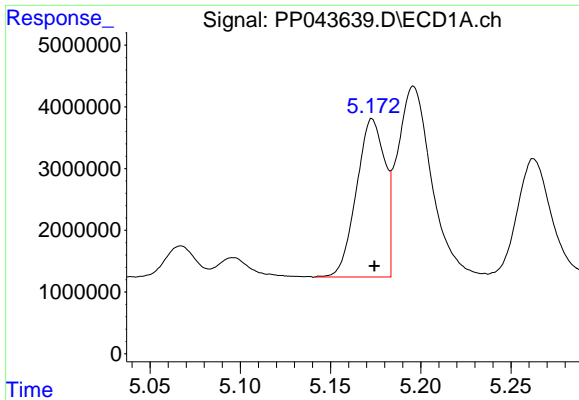
#20 AR-1242-5

R.T.: 6.170 min  
 Delta R.T.: 0.000 min  
 Response: 22145091  
 Conc: 512.83 ng/ml



#20 AR-1242-5

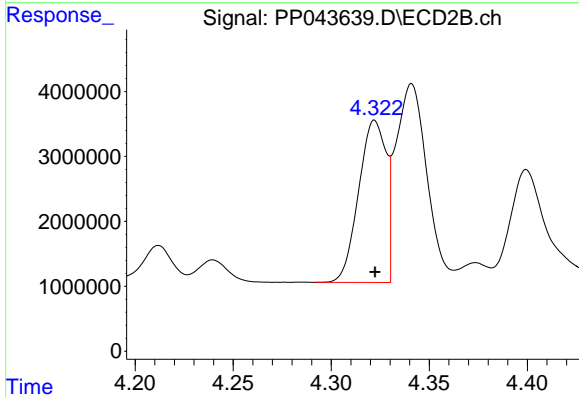
R.T.: 5.178 min  
 Delta R.T.: -0.001 min  
 Response: 22995941  
 Conc: 534.19 ng/ml



#21 AR-1248-1

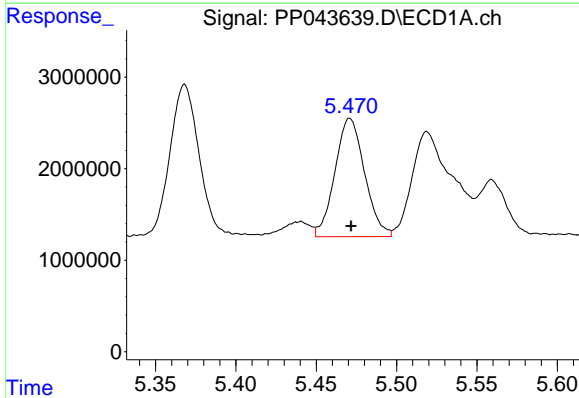
R.T.: 5.173 min  
 Delta R.T.: -0.001 min  
 Response: 28157320  
 Conc: 686.80 ng/ml

Instrument :  
 ECD\_P  
 ClientSampleId :  
 AR1242CCC500



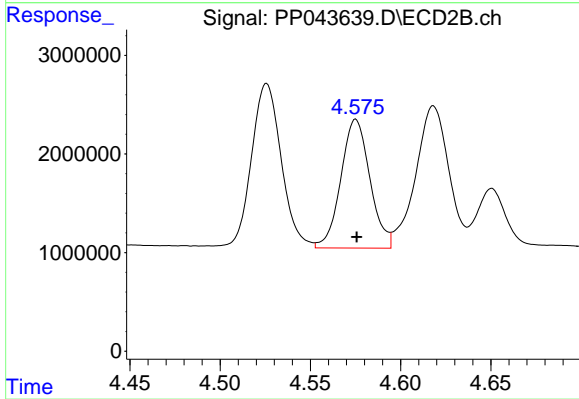
#21 AR-1248-1

R.T.: 4.322 min  
 Delta R.T.: 0.000 min  
 Response: 24311678  
 Conc: 652.66 ng/ml



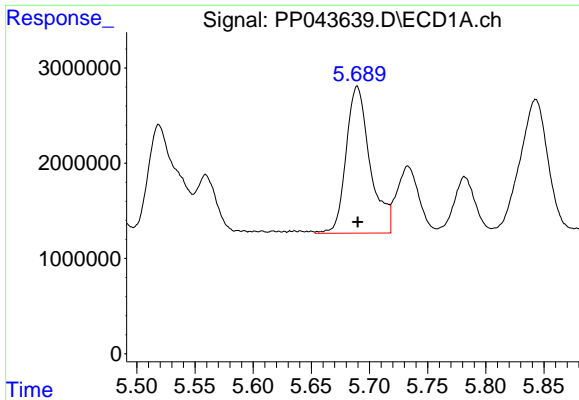
#22 AR-1248-2

R.T.: 5.471 min  
 Delta R.T.: 0.000 min  
 Response: 16629918  
 Conc: 292.71 ng/ml



#22 AR-1248-2

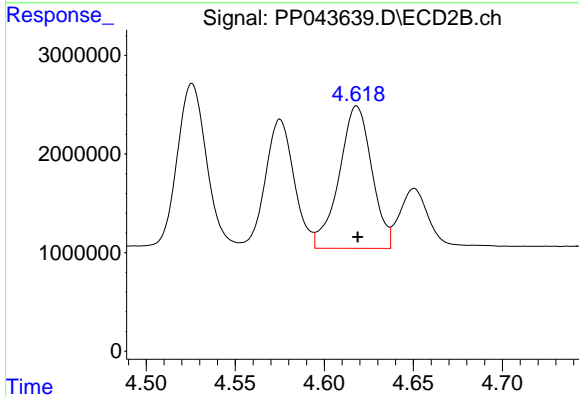
R.T.: 4.575 min  
 Delta R.T.: 0.000 min  
 Response: 14650279  
 Conc: 299.47 ng/ml



#23 AR-1248-3

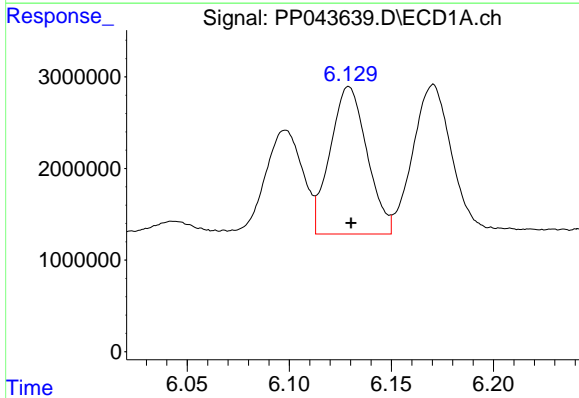
R.T.: 5.689 min  
 Delta R.T.: 0.000 min  
 Response: 22092620  
 Conc: 331.14 ng/ml

Instrument :  
 ECD\_P  
 ClientSampleId :  
 AR1242CCC500



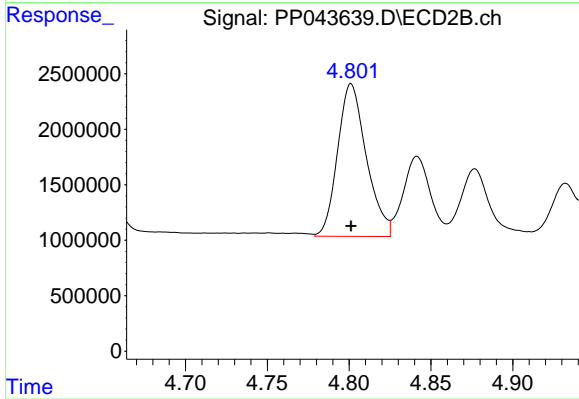
#23 AR-1248-3

R.T.: 4.618 min  
 Delta R.T.: 0.000 min  
 Response: 18444992  
 Conc: 359.45 ng/ml



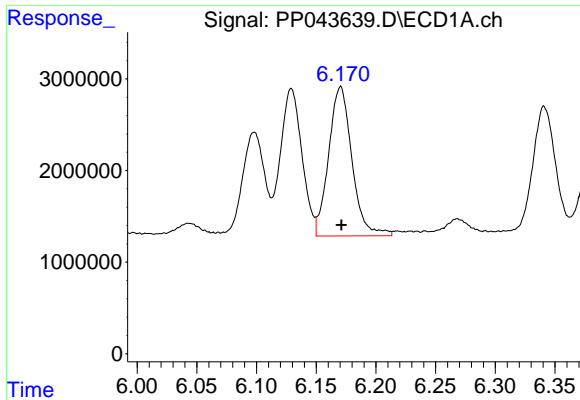
#24 AR-1248-4

R.T.: 6.129 min  
 Delta R.T.: -0.001 min  
 Response: 20234110  
 Conc: 289.61 ng/ml



#24 AR-1248-4

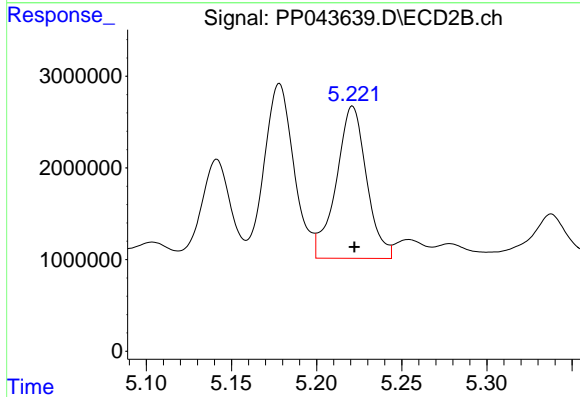
R.T.: 4.801 min  
 Delta R.T.: 0.000 min  
 Response: 16819426  
 Conc: 286.89 ng/ml



#25 AR-1248-5

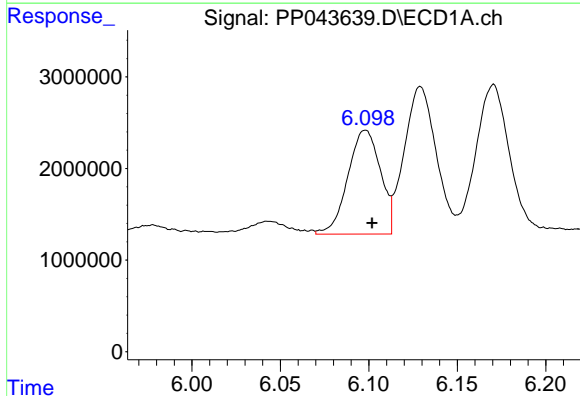
R.T.: 6.170 min  
 Delta R.T.: 0.000 min  
 Response: 22145091  
 Conc: 320.34 ng/ml

Instrument :  
 ECD\_P  
 ClientSampleId :  
 AR1242CCC500



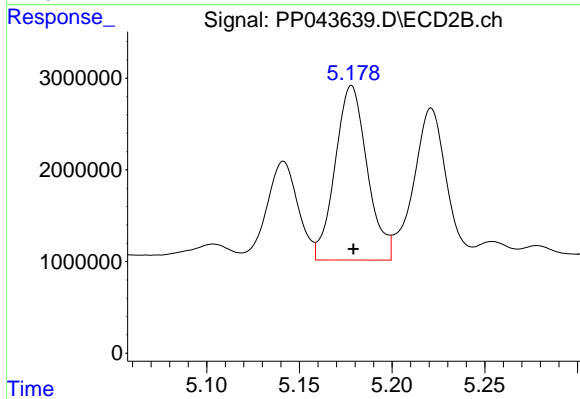
#25 AR-1248-5

R.T.: 5.221 min  
 Delta R.T.: -0.001 min  
 Response: 20621715  
 Conc: 359.91 ng/ml



#26 AR-1254-1

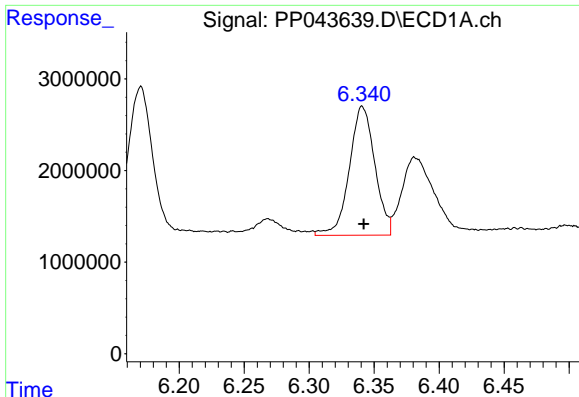
R.T.: 6.098 min  
 Delta R.T.: -0.004 min  
 Response: 14547313  
 Conc: 192.54 ng/ml



#26 AR-1254-1

R.T.: 5.178 min  
 Delta R.T.: 0.000 min  
 Response: 22995941  
 Conc: 263.31 ng/ml

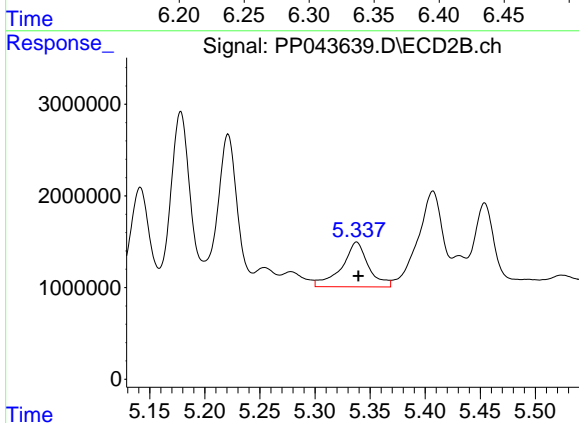




#27 AR-1254-2

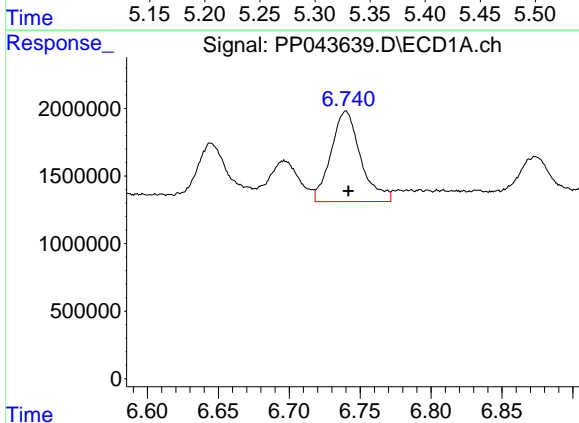
R.T.: 6.341 min  
 Delta R.T.: 0.000 min  
 Response: 19212046  
 Conc: 171.28 ng/ml

Instrument :  
 ECD\_P  
 ClientSampleId :  
 AR1242CCC500



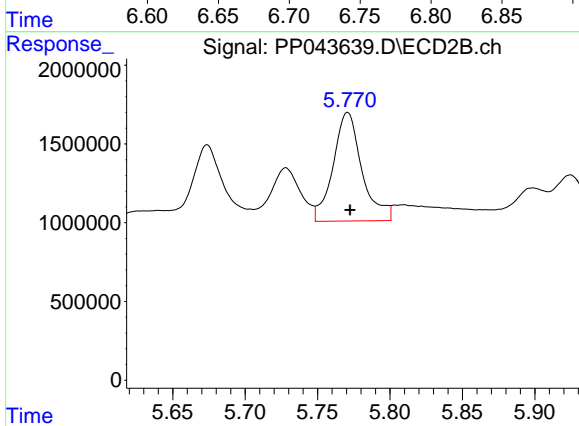
#27 AR-1254-2

R.T.: 5.338 min  
 Delta R.T.: -0.002 min  
 Response: 8263094  
 Conc: 108.33 ng/ml



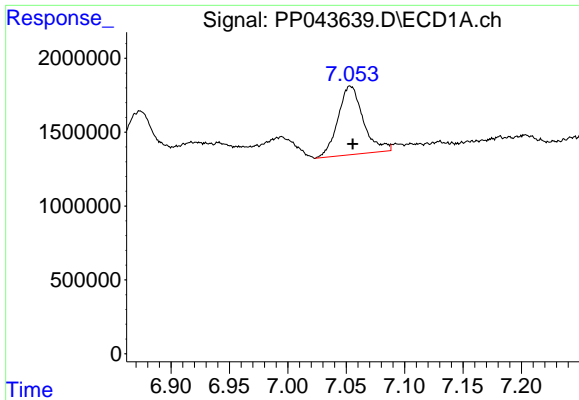
#28 AR-1254-3

R.T.: 6.740 min  
 Delta R.T.: -0.002 min  
 Response: 9760458  
 Conc: 84.35 ng/ml



#28 AR-1254-3

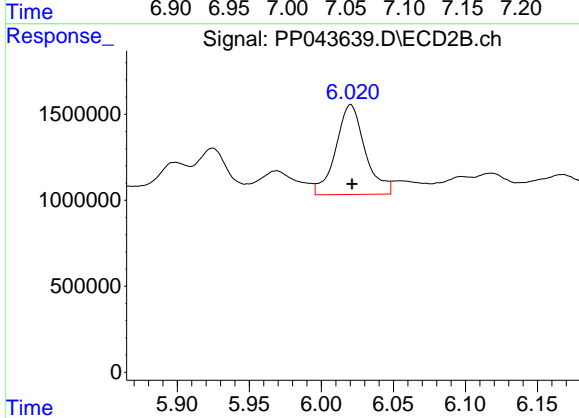
R.T.: 5.771 min  
 Delta R.T.: -0.002 min  
 Response: 9582282  
 Conc: 78.19 ng/ml



#29 AR-1254-4

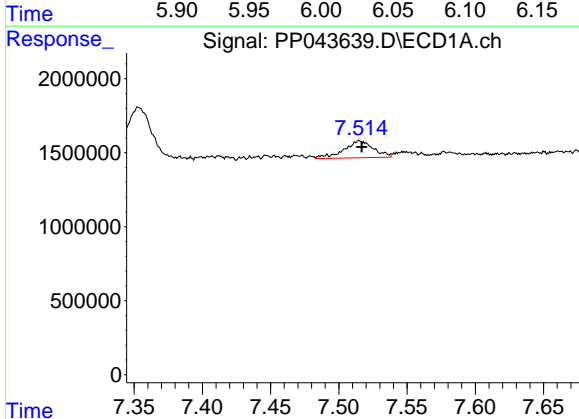
R.T.: 7.054 min  
 Delta R.T.: -0.002 min  
 Response: 7019027  
 Conc: 87.92 ng/ml

Instrument :  
 ECD\_P  
 ClientSampleId :  
 AR1242CCC500



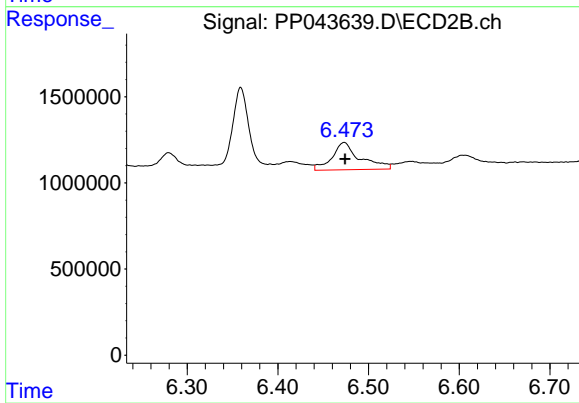
#29 AR-1254-4

R.T.: 6.020 min  
 Delta R.T.: 0.000 min  
 Response: 7406548  
 Conc: 93.84 ng/ml



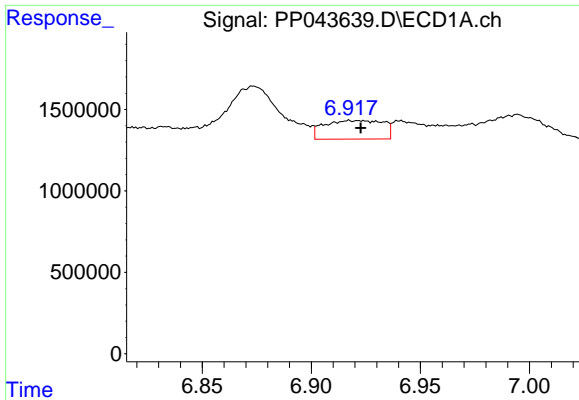
#30 AR-1254-5

R.T.: 7.515 min  
 Delta R.T.: -0.002 min  
 Response: 1706885  
 Conc: 19.90 ng/ml



#30 AR-1254-5

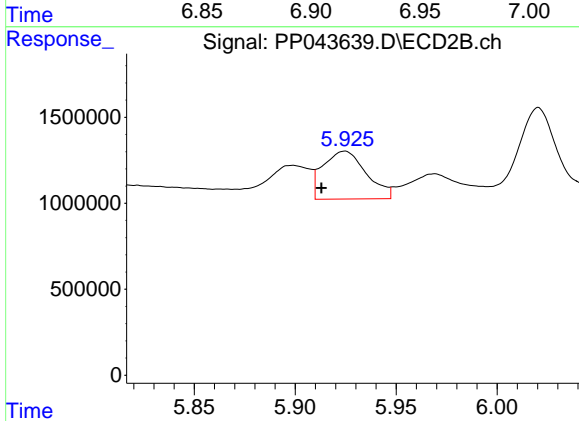
R.T.: 6.473 min  
 Delta R.T.: 0.000 min  
 Response: 3421594  
 Conc: 29.59 ng/ml



#31 AR-1260-1

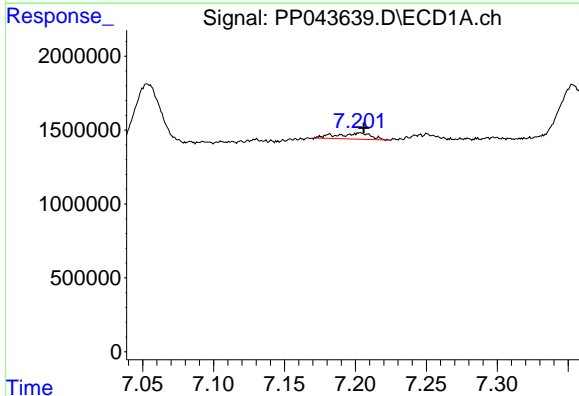
R.T.: 6.922 min  
 Delta R.T.: 0.000 min  
 Response: 2151147  
 Conc: 25.69 ng/ml

Instrument :  
 ECD\_P  
 ClientSampleId :  
 AR1242CCC500



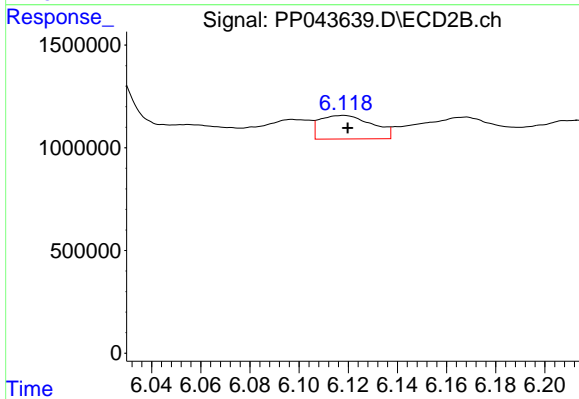
#31 AR-1260-1

R.T.: 5.925 min  
 Delta R.T.: 0.011 min  
 Response: 4160236  
 Conc: 52.02 ng/ml



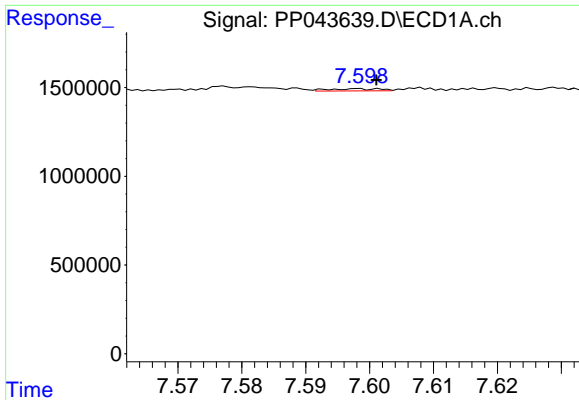
#32 AR-1260-2

R.T.: 7.203 min  
 Delta R.T.: -0.003 min  
 Response: 671408  
 Conc: 7.42 ng/ml



#32 AR-1260-2

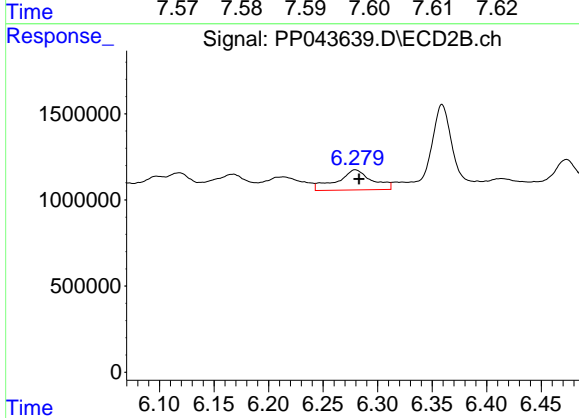
R.T.: 6.118 min  
 Delta R.T.: -0.002 min  
 Response: 1701214  
 Conc: 17.42 ng/ml



#33 AR-1260-3

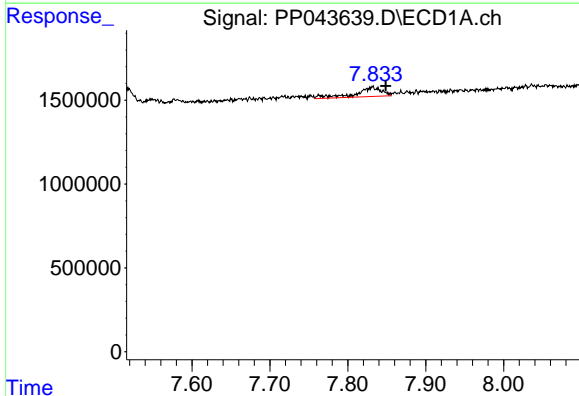
R.T.: 7.598 min  
 Delta R.T.: -0.003 min  
 Response: 67837  
 Conc: 0.94 ng/ml

Instrument :  
 ECD\_P  
 ClientSampleId :  
 AR1242CCC500



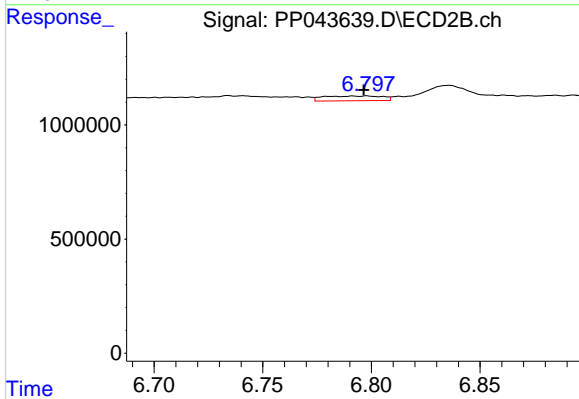
#33 AR-1260-3

R.T.: 6.279 min  
 Delta R.T.: -0.004 min  
 Response: 2624208  
 Conc: 28.75 ng/ml



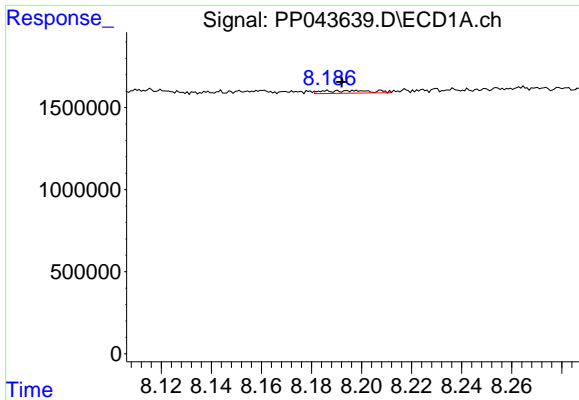
#34 AR-1260-4

R.T.: 7.832 min  
 Delta R.T.: -0.017 min  
 Response: 1276948  
 Conc: 14.87 ng/ml



#34 AR-1260-4

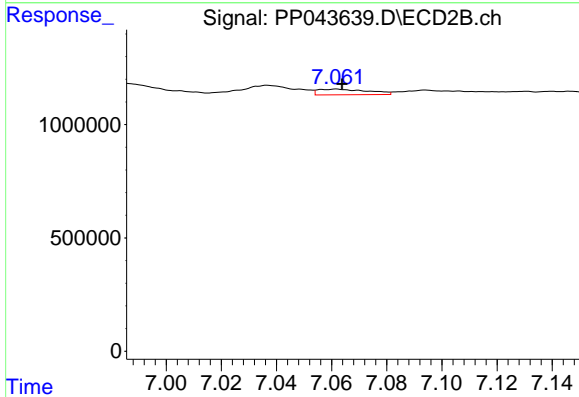
R.T.: 6.798 min  
 Delta R.T.: 0.002 min  
 Response: 393761  
 Conc: 4.87 ng/ml



#35 AR-1260-5

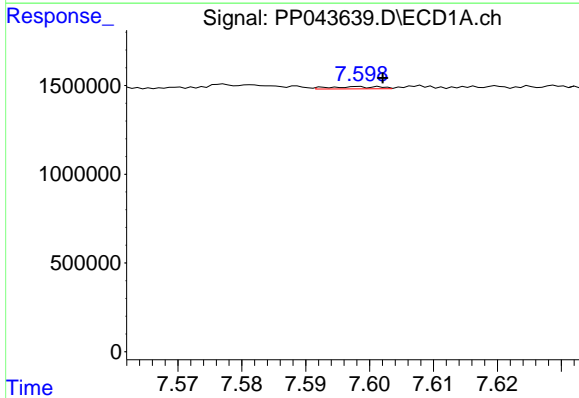
R.T.: 8.186 min  
 Delta R.T.: -0.006 min  
 Response: 221478  
 Conc: 1.43 ng/ml

Instrument :  
 ECD\_P  
 ClientSampleId :  
 AR1242CCC500



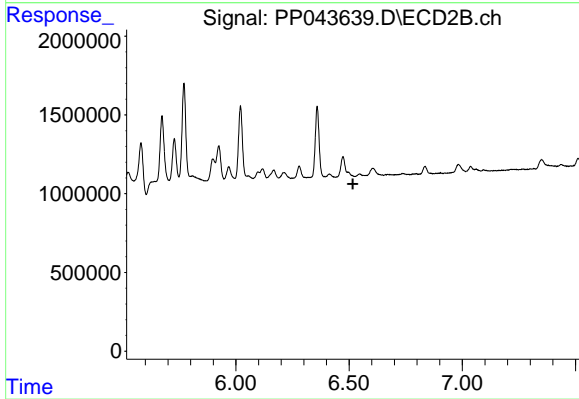
#35 AR-1260-5

R.T.: 7.062 min  
 Delta R.T.: -0.002 min  
 Response: 314829  
 Conc: 1.70 ng/ml



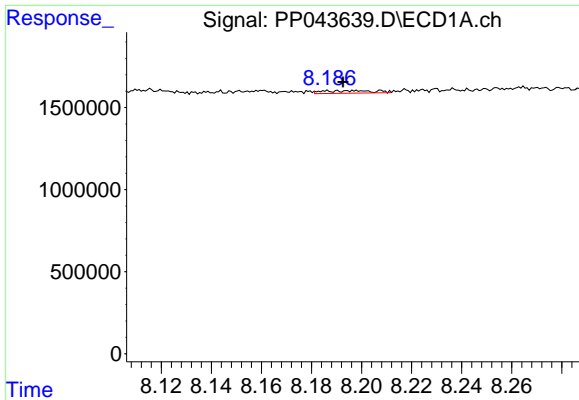
#36 AR-1262-1

R.T.: 7.598 min  
 Delta R.T.: -0.004 min  
 Response: 67837  
 Conc: 0.69 ng/ml



#36 AR-1262-1

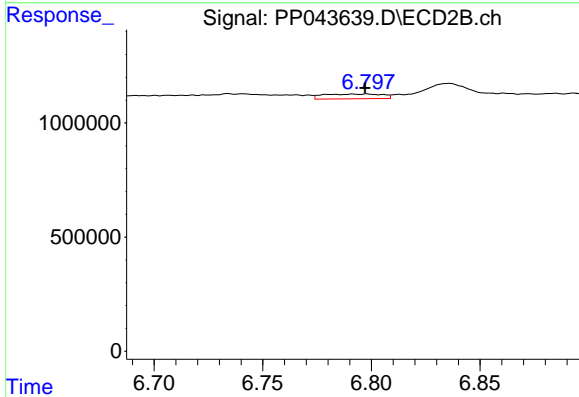
R.T.: 0.000 min  
 Exp R.T. : 6.516 min  
 Response: 0  
 Conc: N.D.



#37 AR-1262-2

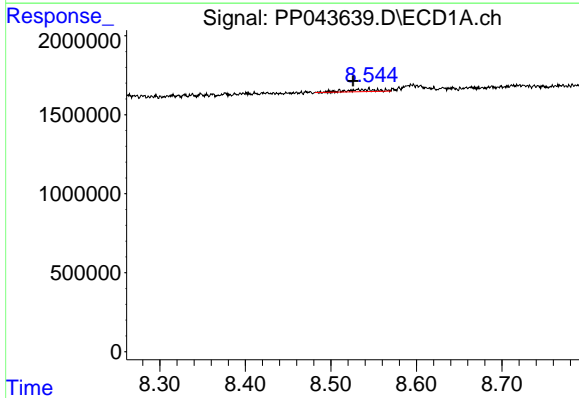
R.T.: 8.186 min  
 Delta R.T.: -0.007 min  
 Response: 221478  
 Conc: 1.37 ng/ml

Instrument :  
 ECD\_P  
 ClientSampleId :  
 AR1242CCC500



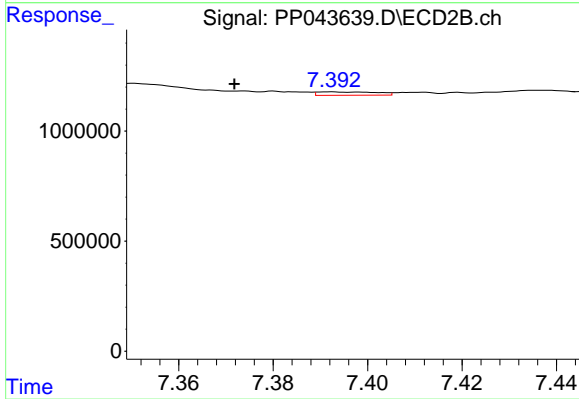
#37 AR-1262-2

R.T.: 6.798 min  
 Delta R.T.: 0.000 min  
 Response: 393761  
 Conc: 3.86 ng/ml



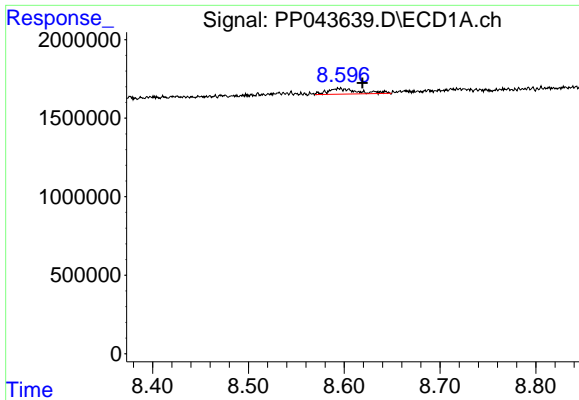
#38 AR-1262-3

R.T.: 8.532 min  
 Delta R.T.: 0.005 min  
 Response: 314452  
 Conc: 2.87 ng/ml



#38 AR-1262-3

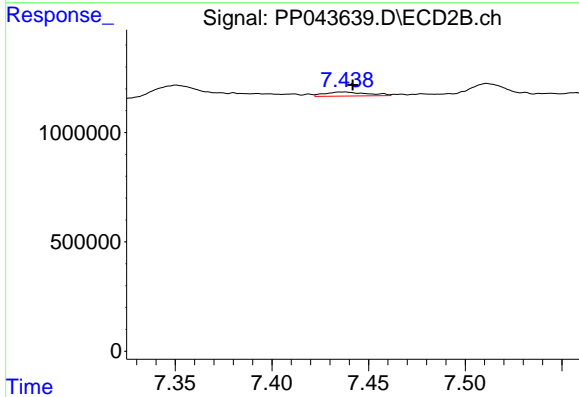
R.T.: 7.392 min  
 Delta R.T.: 0.020 min  
 Response: 135606  
 Conc: 1.59 ng/ml



#39 AR-1262-4

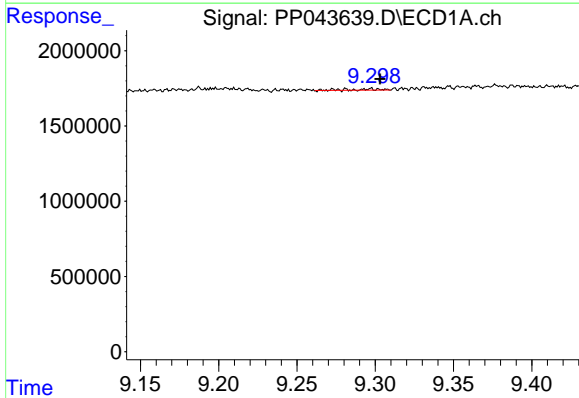
R.T.: 8.595 min  
 Delta R.T.: -0.024 min  
 Response: 792569  
 Conc: 16.53 ng/ml

Instrument :  
 ECD\_P  
 ClientSampleId :  
 AR1242CCC500



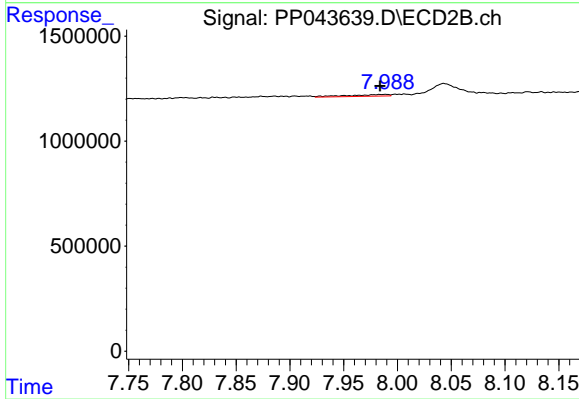
#39 AR-1262-4

R.T.: 7.437 min  
 Delta R.T.: -0.005 min  
 Response: 287841  
 Conc: 1.85 ng/ml



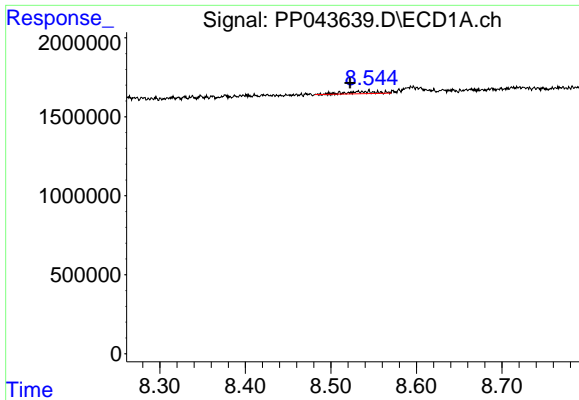
#40 AR-1262-5

R.T.: 9.281 min  
 Delta R.T.: -0.022 min  
 Response: 105256  
 Conc: 1.89 ng/ml



#40 AR-1262-5

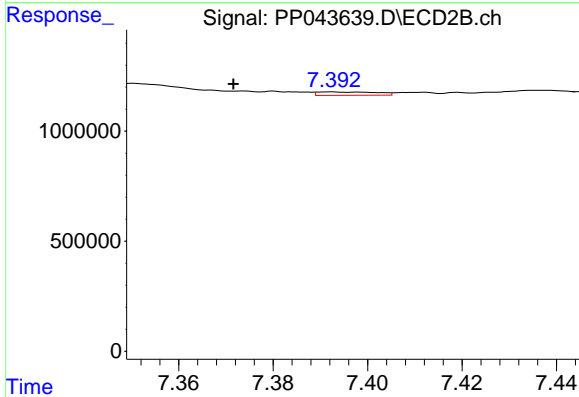
R.T.: 7.989 min  
 Delta R.T.: 0.005 min  
 Response: 222764  
 Conc: 2.86 ng/ml



#41 AR-1268-1

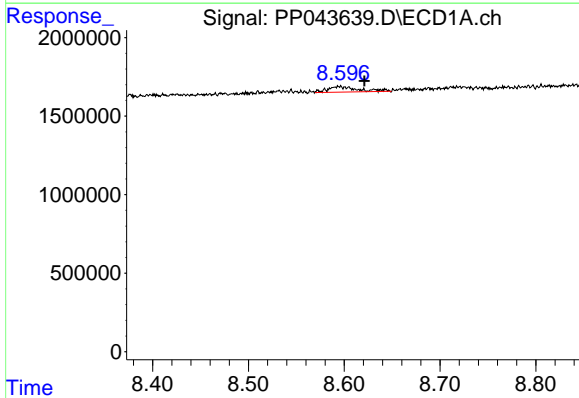
R.T.: 8.532 min  
 Delta R.T.: 0.009 min  
 Response: 314452  
 Conc: 1.61 ng/ml

Instrument :  
 ECD\_P  
 ClientSampleId :  
 AR1242CCC500



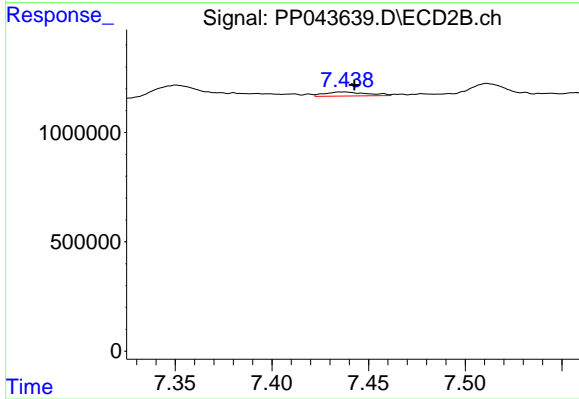
#41 AR-1268-1

R.T.: 7.392 min  
 Delta R.T.: 0.021 min  
 Response: 135606  
 Conc: 0.54 ng/ml



#42 AR-1268-2

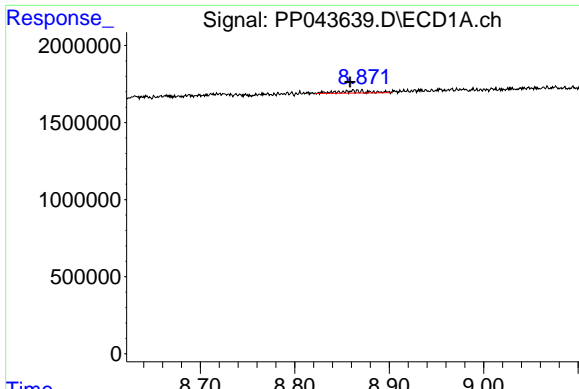
R.T.: 8.595 min  
 Delta R.T.: -0.027 min  
 Response: 792569  
 Conc: 4.53 ng/ml



#42 AR-1268-2

R.T.: 7.437 min  
 Delta R.T.: -0.006 min  
 Response: 287841  
 Conc: 1.27 ng/ml

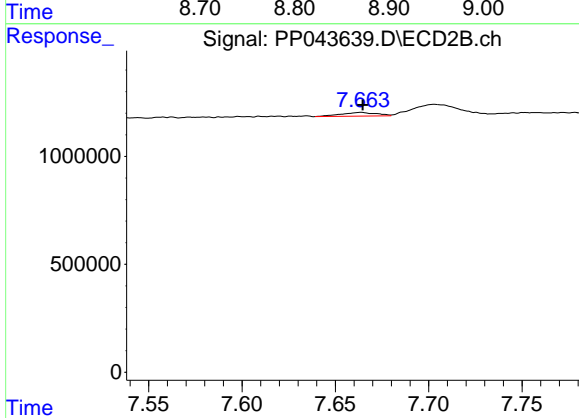




#43 AR-1268-3

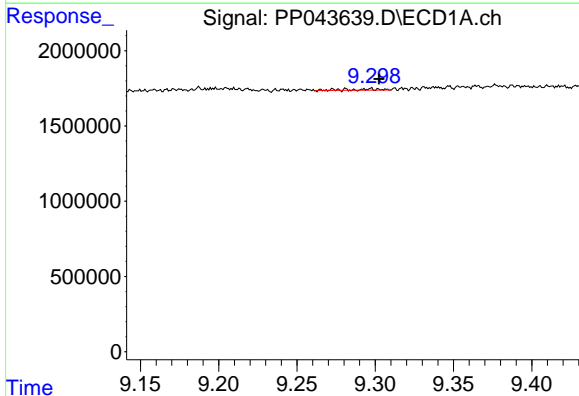
R.T.: 8.866 min  
 Delta R.T.: 0.007 min  
 Response: 332700  
 Conc: 2.16 ng/ml

Instrument :  
 ECD\_P  
 ClientSampleId :  
 AR1242CCC500



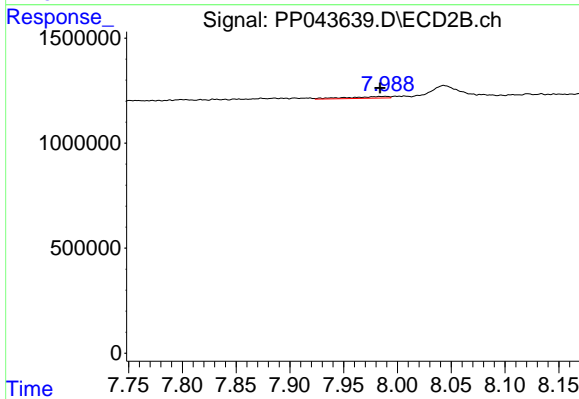
#43 AR-1268-3

R.T.: 7.664 min  
 Delta R.T.: 0.000 min  
 Response: 231016  
 Conc: 1.19 ng/ml



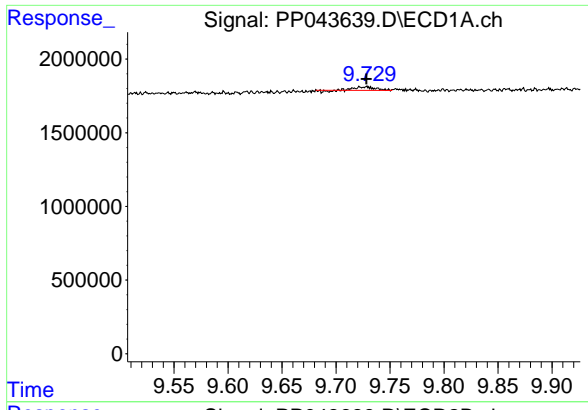
#44 AR-1268-4

R.T.: 9.281 min  
 Delta R.T.: -0.021 min  
 Response: 105256  
 Conc: 1.68 ng/ml



#44 AR-1268-4

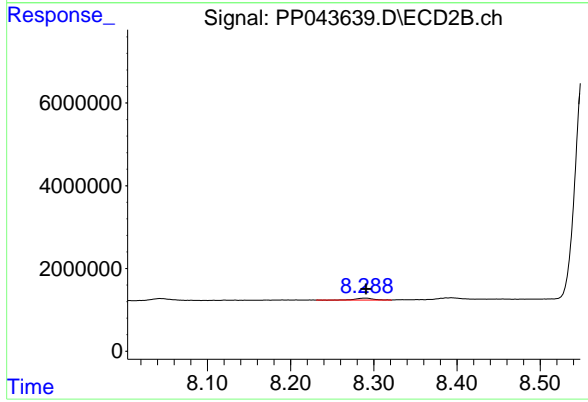
R.T.: 7.989 min  
 Delta R.T.: 0.005 min  
 Response: 222764  
 Conc: 2.48 ng/ml



#45 AR-1268-5

R.T.: 9.727 min  
 Delta R.T.: -0.001 min  
 Response: 284018  
 Conc: 0.62 ng/ml

Instrument :  
 ECD\_P  
 ClientSampleId :  
 AR1242CCC500



#45 AR-1268-5

R.T.: 8.289 min  
 Delta R.T.: -0.002 min  
 Response: 650810  
 Conc: 1.08 ng/ml