

Data Path : Z:\pestpcbsrv\HPCHEM1\ECD\_P\Data\PP021122\  
 Data File : PP043643.D  
 Signal(s) : Signal #1: ECD1A.ch Signal #2: ECD2B.ch  
 Acq On : 12 Feb 2022 01:25  
 Operator : YP\AJ  
 Sample : I.BLK  
 Misc :  
 ALS Vial : 2 Sample Multiplier: 1

Instrument :  
 ECD\_P  
 ClientSampleId :  
 I.BLK

Integration File signal 1: autoint1.e  
 Integration File signal 2: autoint2.e  
 Quant Time: Feb 12 04:58:20 2022  
 Quant Method : Z:\pestpcbsrv\HPCHEM1\ECD\_P\methods\PP021022.M  
 Quant Title : GC EXTRACTABLES  
 QLast Update : Fri Feb 11 04:48:05 2022  
 Response via : Initial Calibration  
 Integrator: ChemStation

Volume Inj. : 2 µl  
 Signal #1 Phase : ZB-MR1 Signal #2 Phase: ZB-MR2  
 Signal #1 Info : 30Mx0.32mmx 0.50µ Signal #2 Info : 30M x 0.32mm x 0.25µm

Compound	RT#1	RT#2	Resp#1	Resp#2	ng/ml	ng/ml
-----						
System Monitoring Compounds						
1) SA Tetrachlo...	3.919	3.174	42096160	38153083	19.039	20.313
2) SA Decachlor...	10.070	8.554	25587623	34917672	21.541	21.522
Target Compounds						
3) L1 AR-1016-1	0.000	4.325	0	66247	N.D.	1.081 #
4) L1 AR-1016-2	0.000	4.345	0	663361	N.D.	7.851 #
5) L1 AR-1016-3	5.266	4.528	442000	540422	6.713	11.568 #
6) L1 AR-1016-4	0.000	4.570	0	487636	N.D.	13.049 #
7) L1 AR-1016-5	5.660f	0.000	1476610	0	28.111	N.D. #
8) L2 AR-1221-1	4.171f	3.402	387916	12355	15.237	0.518 #
9) L2 AR-1221-2	4.242	3.488	851295	619034	44.342	34.276
10) L2 AR-1221-3	4.306	3.574	228107	18075	3.971	0.350 #
11) L3 AR-1232-1	4.306	3.574	228107	18075	4.700	0.420 #
12) L3 AR-1232-2	4.885	4.345	274347	663361	11.577	18.583 #
13) L3 AR-1232-3	0.000	4.528	0	540422	N.D.	27.637 #
14) L3 AR-1232-4	0.000	4.616	0	644265	N.D.	37.257 #
16) L4 AR-1242-1	0.000	4.325	0	66247	N.D.	1.359 #
17) L4 AR-1242-2	0.000	4.345	0	663361	N.D.	9.852 #
18) L4 AR-1242-3	5.266	4.528	442000	540422	8.539	14.396 #
19) L4 AR-1242-4	0.000	4.616	0	644265	N.D.	17.842 #
20) L4 AR-1242-5	6.185	5.166	3523187	1076001	81.589	24.995 #
21) L5 AR-1248-1	0.000	4.325	0	66247	N.D.	1.778 #
22) L5 AR-1248-2	0.000	4.570	0	487636	N.D.	9.968 #
23) L5 AR-1248-3	0.000	4.616	0	644265	N.D.	12.555 #
25) L5 AR-1248-5	6.185	5.239f	3523187	394789	50.964	6.890 #
26) L6 AR-1254-1	6.096	5.166	3459687	1076001	45.789	12.321 #
27) L6 AR-1254-2	0.000	5.340	0	1081684	N.D.	14.181 #
28) L6 AR-1254-3	6.740	5.774	8005460	610236	69.184	4.979 #
29) L6 AR-1254-4	0.000	6.017	0	554079	N.D.	7.020 #
30) L6 AR-1254-5	0.000	6.477	0	569571	N.D.	4.925 #
31) L7 AR-1260-1	0.000	5.911	0	924486	N.D.	11.560 #
32) L7 AR-1260-2	0.000	6.135	0	601503	N.D.	6.160 #
33) L7 AR-1260-3	0.000	6.286	0	503286	N.D.	5.513 #
34) L7 AR-1260-4	0.000	6.800	0	317761	N.D.	3.927 #
35) L7 AR-1260-5	0.000	7.065	0	116255	N.D.	0.629 #
36) L8 AR-1262-1	0.000	6.526	0	980997	N.D.	8.924 #
37) L8 AR-1262-2	0.000	6.800	0	317761	N.D.	3.115 #
38) L8 AR-1262-3	0.000	7.383	0	1997543	N.D.	23.439 #
39) L8 AR-1262-4	8.595f	7.436	887445	149785	18.505	0.964 #
40) L8 AR-1262-5	0.000	7.981	0	73310	N.D.	0.942 #
41) L9 AR-1268-1	0.000	7.383	0	1997543	N.D.	7.884 #
42) L9 AR-1268-2	8.595f	7.436	887445	149785	5.070	0.663 #
43) L9 AR-1268-3	0.000	7.659	0	39572	N.D.	0.203 #

Data Path : Z:\pestpcbsrv\HPCHEM1\ECD\_P\Data\PP021122\  
 Data File : PP043643.D  
 Signal(s) : Signal #1: ECD1A.ch Signal #2: ECD2B.ch  
 Acq On : 12 Feb 2022 01:25  
 Operator : YP\AJ  
 Sample : I.BLK  
 Misc :  
 ALS Vial : 2 Sample Multiplier: 1

Instrument :  
 ECD\_P  
 ClientSampleId :  
 I.BLK

Integration File signal 1: autoint1.e  
 Integration File signal 2: autoint2.e  
 Quant Time: Feb 12 04:58:20 2022  
 Quant Method : Z:\pestpcbsrv\HPCHEM1\ECD\_P\methods\PP021022.M  
 Quant Title : GC EXTRACTABLES  
 QLast Update : Fri Feb 11 04:48:05 2022  
 Response via : Initial Calibration  
 Integrator: ChemStation

Volume Inj. : 2 µl  
 Signal #1 Phase : ZB-MR1 Signal #2 Phase: ZB-MR2  
 Signal #1 Info : 30Mx0.32mmx 0.50µ Signal #2 Info : 30M x 0.32mm x 0.25µm

	Compound	RT#1	RT#2	Resp#1	Resp#2	ng/ml	ng/ml
44)	L9 AR-1268-4	0.000	7.981	0	73310	N.D.	0.815 #
45)	L9 AR-1268-5	9.732	8.286	448818	354382	0.988	0.590 #

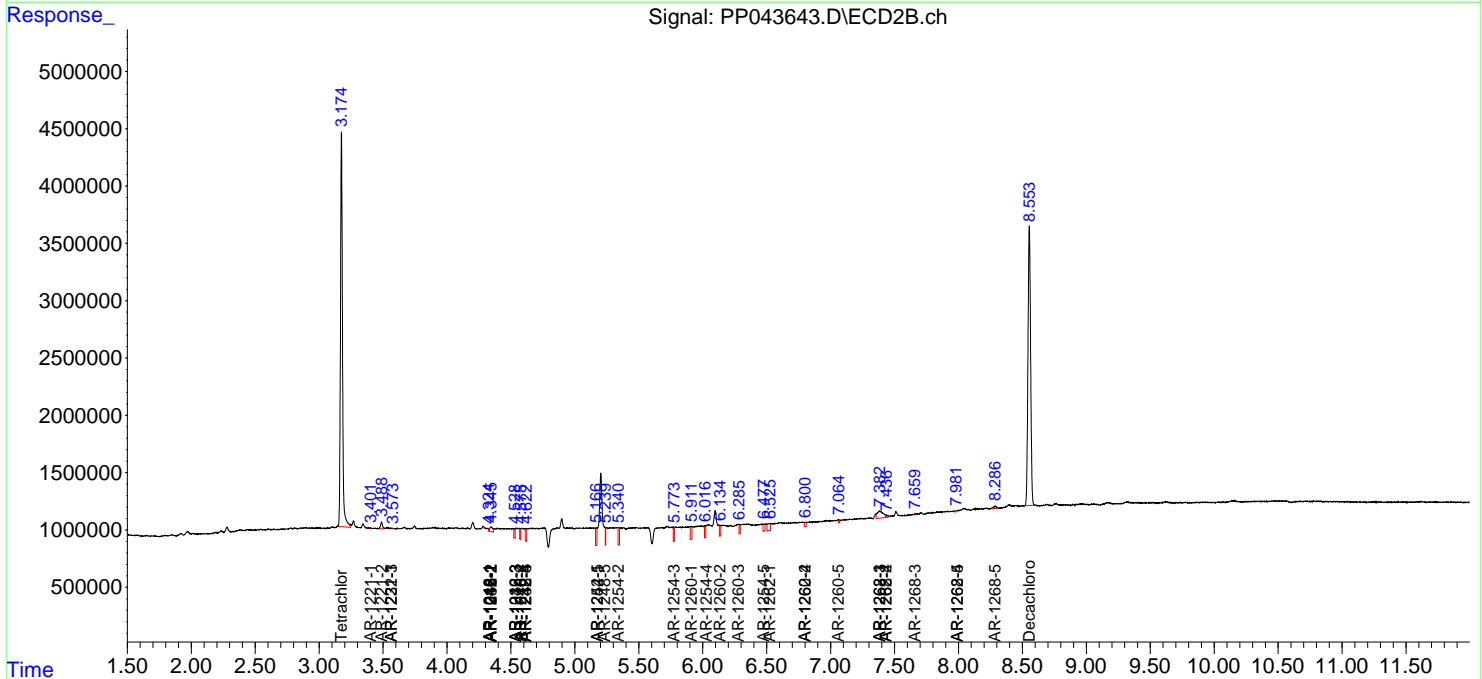
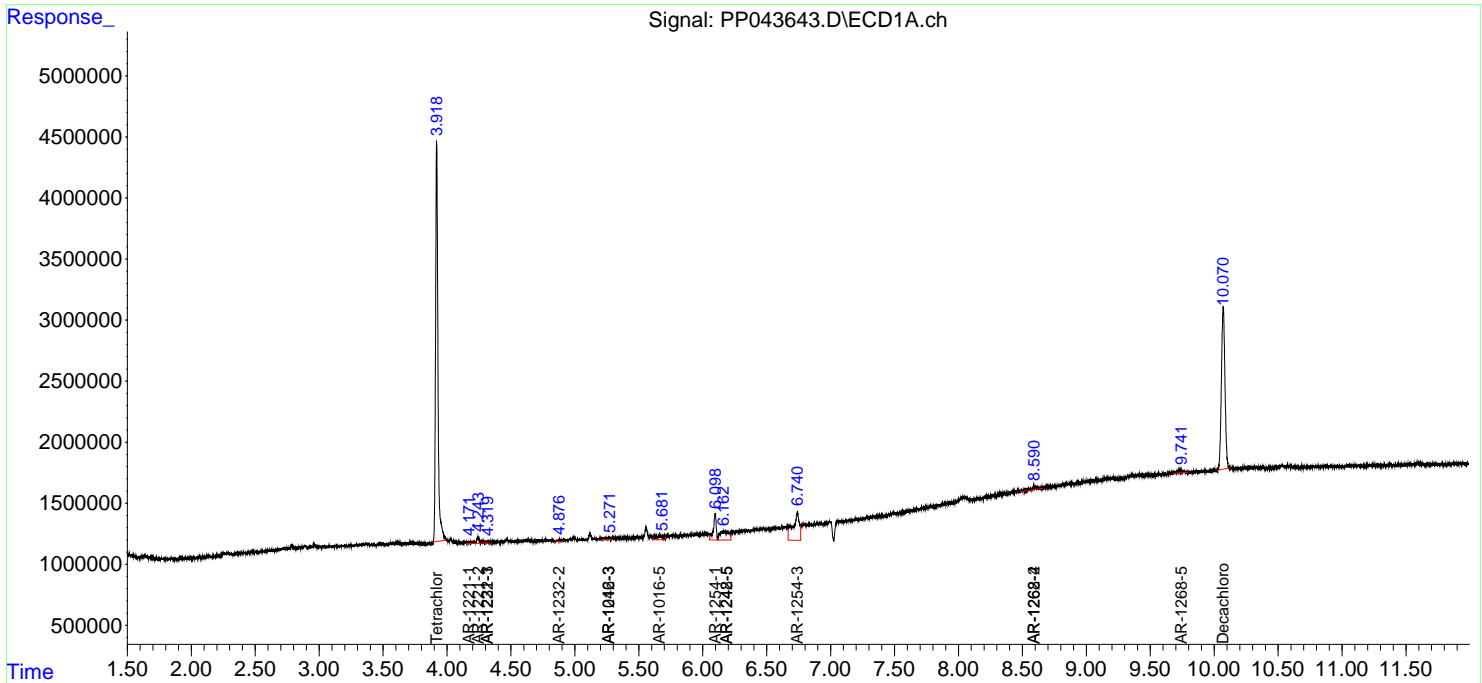
(f)=RT Delta > 1/2 Window (#)=Amounts differ by > 25% (m)=manual int.

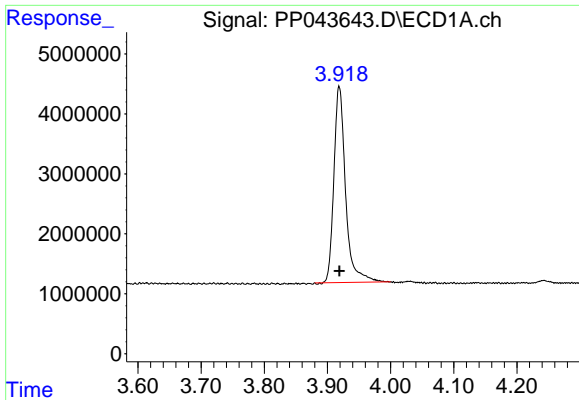
Data Path : Z:\pestpcbsrv\HPCHEM1\ECD\_P\Data\PP021122\  
 Data File : PP043643.D  
 Signal(s) : Signal #1: ECD1A.ch Signal #2: ECD2B.ch  
 Acq On : 12 Feb 2022 01:25  
 Operator : YP\AJ  
 Sample : I.BLK  
 Misc :  
 ALS Vial : 2 Sample Multiplier: 1

**Instrument :**  
 ECD\_P  
**ClientSampleId :**  
 I.BLK

Integration File signal 1: autoint1.e  
 Integration File signal 2: autoint2.e  
 Quant Time: Feb 12 04:58:20 2022  
 Quant Method : Z:\pestpcbsrv\HPCHEM1\ECD\_P\methods\PP021022.M  
 Quant Title : GC EXTRACTABLES  
 QLast Update : Fri Feb 11 04:48:05 2022  
 Response via : Initial Calibration  
 Integrator: ChemStation

Volume Inj. : 2 µl  
 Signal #1 Phase : ZB-MR1 Signal #2 Phase: ZB-MR2  
 Signal #1 Info : 30Mx0.32mmx 0.50µ Signal #2 Info : 30M x 0.32mm x 0.25µm

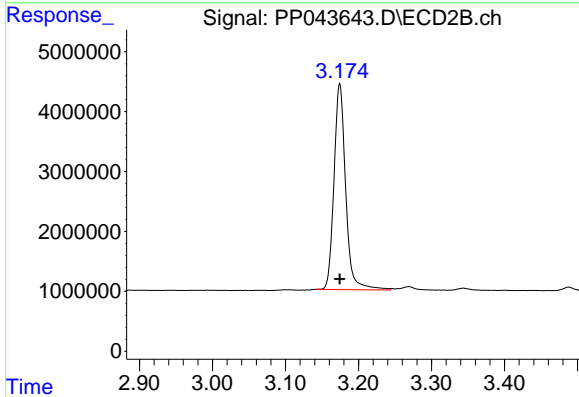




#1 Tetrachloro-m-xylene

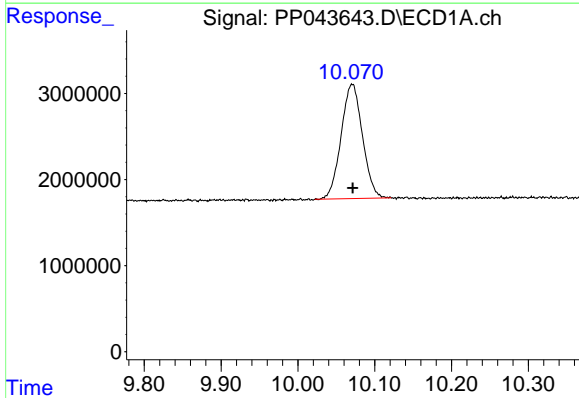
R.T.: 3.919 min  
 Delta R.T.: 0.000 min  
 Response: 42096160  
 Conc: 19.04 ng/ml

Instrument :  
 ECD\_P  
 ClientSampleId :  
 I.BLK



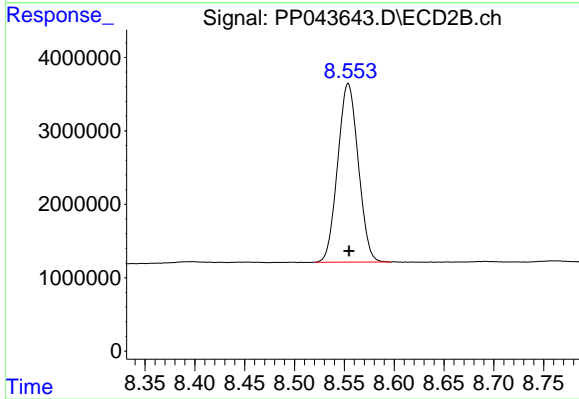
#1 Tetrachloro-m-xylene

R.T.: 3.174 min  
 Delta R.T.: 0.000 min  
 Response: 38153083  
 Conc: 20.31 ng/ml



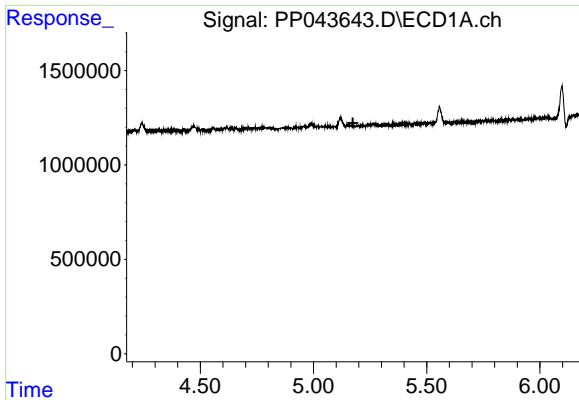
#2 Decachlorobiphenyl

R.T.: 10.070 min  
 Delta R.T.: -0.001 min  
 Response: 25587623  
 Conc: 21.54 ng/ml



#2 Decachlorobiphenyl

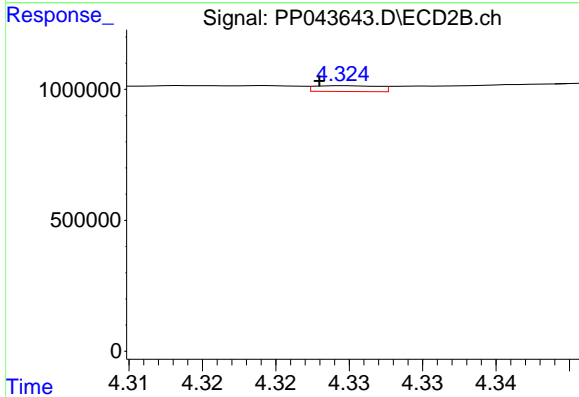
R.T.: 8.554 min  
 Delta R.T.: 0.000 min  
 Response: 34917672  
 Conc: 21.52 ng/ml



#3 AR-1016-1

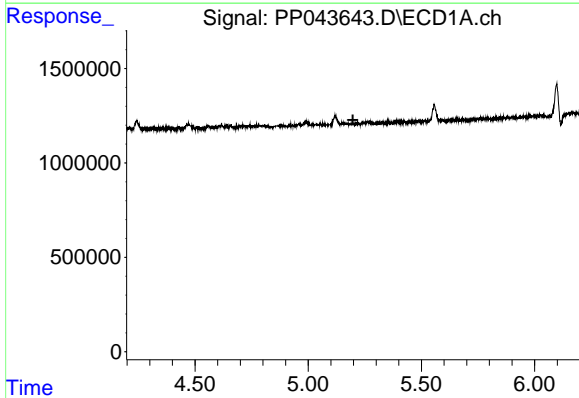
R.T.: 0.000 min  
 Exp R.T.: 5.174 min  
 Response: 0  
 Conc: N.D.

Instrument :  
 ECD\_P  
 ClientSampleId :  
 I.BLK



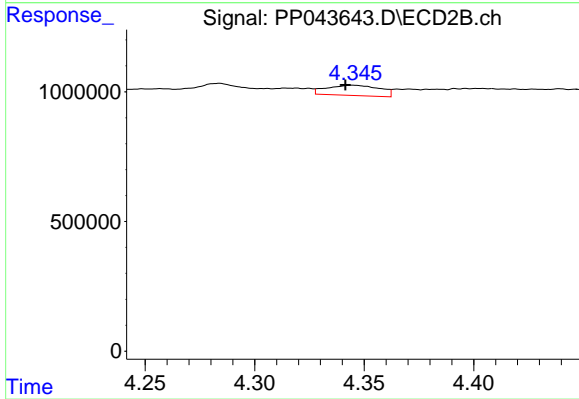
#3 AR-1016-1

R.T.: 4.325 min  
 Delta R.T.: 0.002 min  
 Response: 66247  
 Conc: 1.08 ng/ml



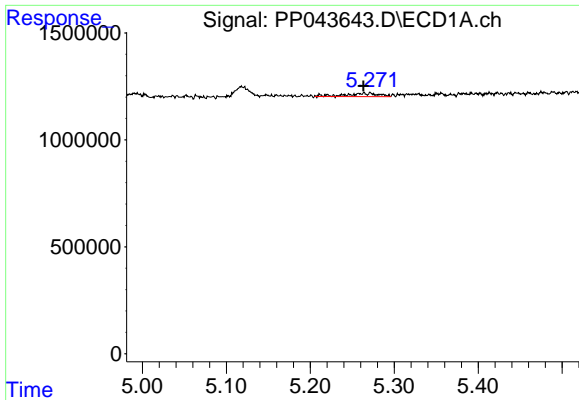
#4 AR-1016-2

R.T.: 0.000 min  
 Exp R.T.: 5.198 min  
 Response: 0  
 Conc: N.D.



#4 AR-1016-2

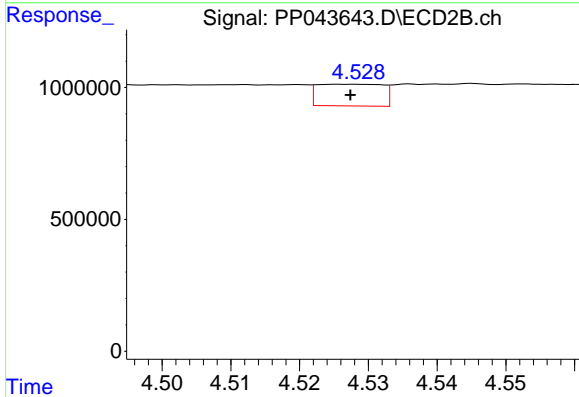
R.T.: 4.345 min  
 Delta R.T.: 0.003 min  
 Response: 663361  
 Conc: 7.85 ng/ml



#5 AR-1016-3

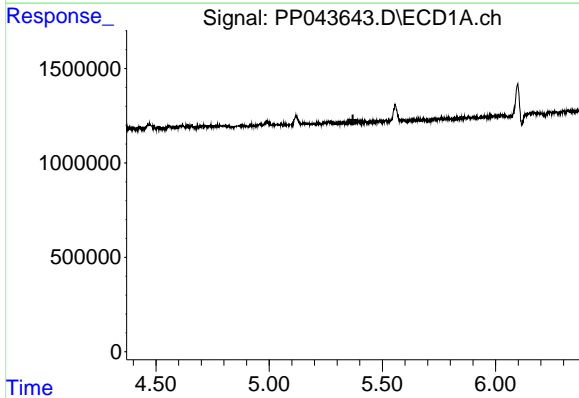
R.T.: 5.266 min  
 Delta R.T.: 0.002 min  
 Response: 442000  
 Conc: 6.71 ng/ml

Instrument :  
 ECD\_P  
 ClientSampleId :  
 I.BLK



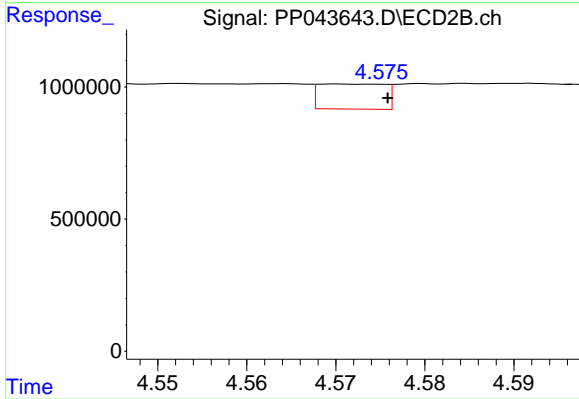
#5 AR-1016-3

R.T.: 4.528 min  
 Delta R.T.: 0.000 min  
 Response: 540422  
 Conc: 11.57 ng/ml



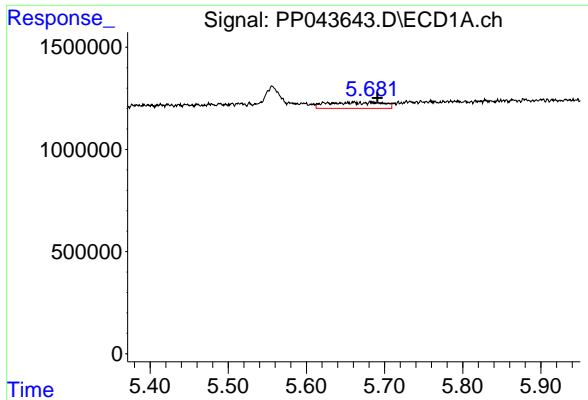
#6 AR-1016-4

R.T.: 0.000 min  
 Exp R.T. : 5.370 min  
 Response: 0  
 Conc: N.D.



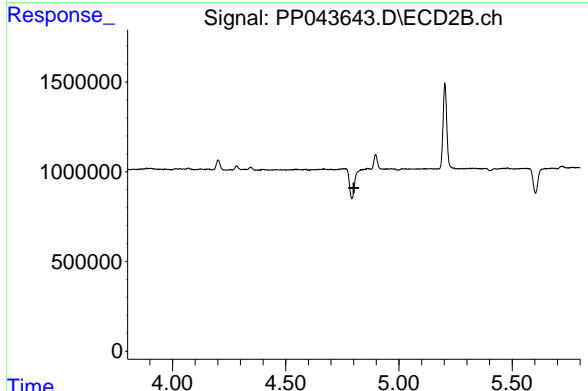
#6 AR-1016-4

R.T.: 4.570 min  
 Delta R.T.: -0.006 min  
 Response: 487636  
 Conc: 13.05 ng/ml

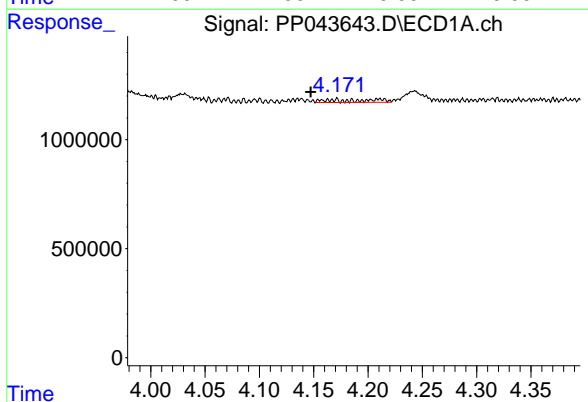


#7 AR-1016-5  
 R.T.: 5.660 min  
 Delta R.T.: -0.031 min  
 Response: 1476610  
 Conc: 28.11 ng/ml

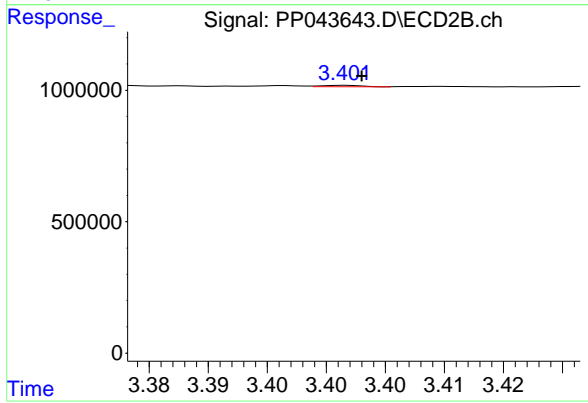
Instrument :  
 ECD\_P  
 ClientSampleId :  
 I.BLK



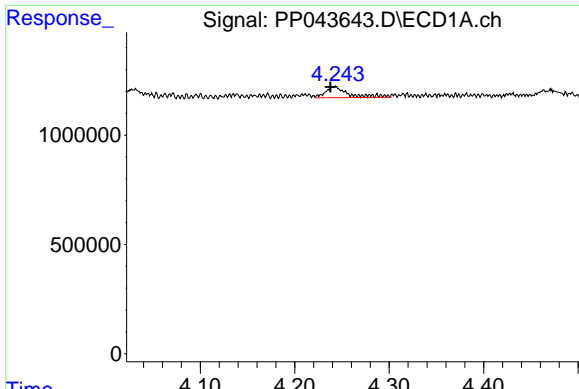
#7 AR-1016-5  
 R.T.: 0.000 min  
 Exp R.T. : 4.801 min  
 Response: 0  
 Conc: N.D.



#8 AR-1221-1  
 R.T.: 4.171 min  
 Delta R.T.: 0.024 min  
 Response: 387916  
 Conc: 15.24 ng/ml



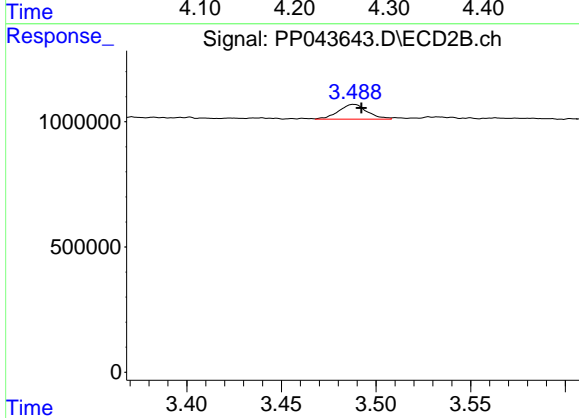
#8 AR-1221-1  
 R.T.: 3.402 min  
 Delta R.T.: -0.001 min  
 Response: 12355  
 Conc: 0.52 ng/ml



#9 AR-1221-2

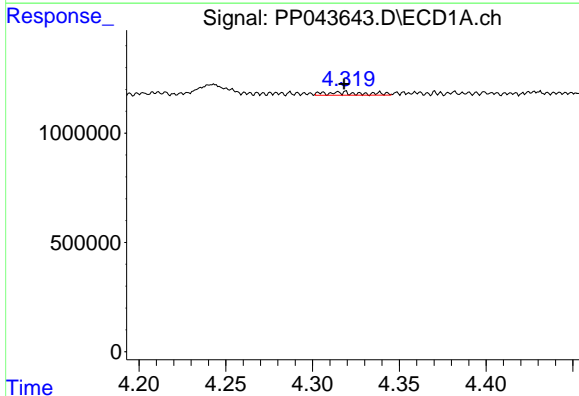
R.T.: 4.242 min  
 Delta R.T.: 0.005 min  
 Response: 851295  
 Conc: 44.34 ng/ml

Instrument :  
 ECD\_P  
 ClientSampleId :  
 I.BLK



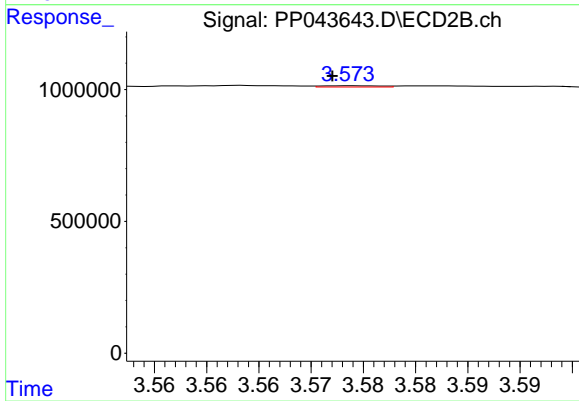
#9 AR-1221-2

R.T.: 3.488 min  
 Delta R.T.: -0.004 min  
 Response: 619034  
 Conc: 34.28 ng/ml



#10 AR-1221-3

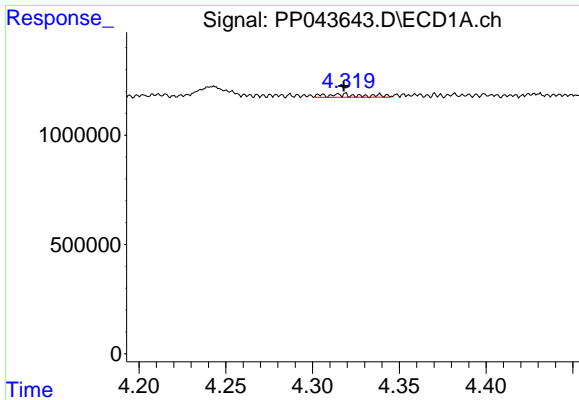
R.T.: 4.306 min  
 Delta R.T.: -0.012 min  
 Response: 228107  
 Conc: 3.97 ng/ml



#10 AR-1221-3

R.T.: 3.574 min  
 Delta R.T.: 0.002 min  
 Response: 18075  
 Conc: 0.35 ng/ml

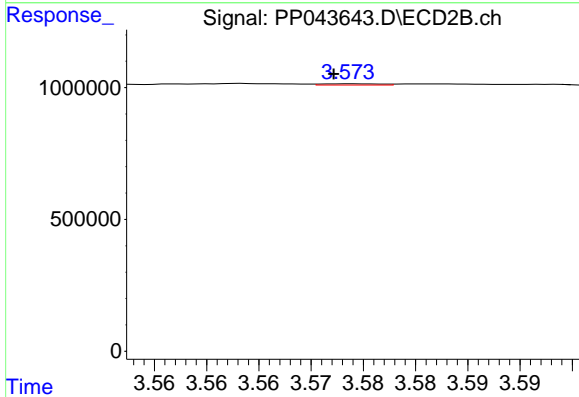




#11 AR-1232-1

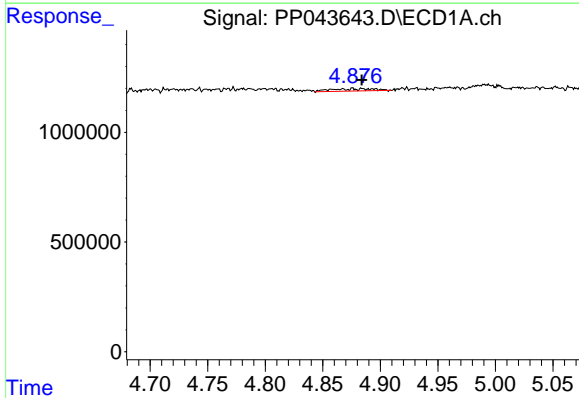
R.T.: 4.306 min  
 Delta R.T.: -0.012 min  
 Response: 228107  
 Conc: 4.70 ng/ml

Instrument :  
 ECD\_P  
 ClientSampleId :  
 I.BLK



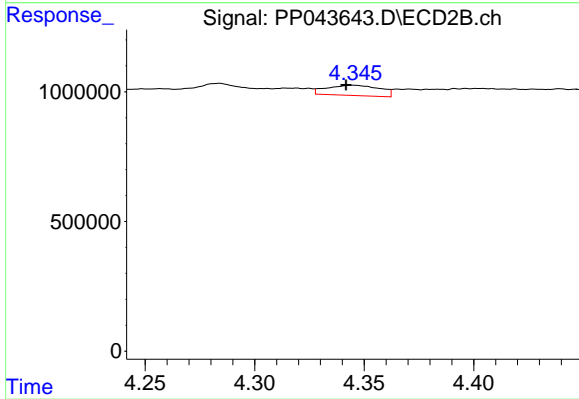
#11 AR-1232-1

R.T.: 3.574 min  
 Delta R.T.: 0.002 min  
 Response: 18075  
 Conc: 0.42 ng/ml



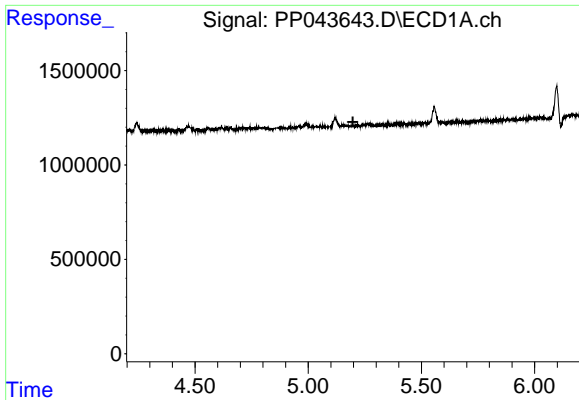
#12 AR-1232-2

R.T.: 4.885 min  
 Delta R.T.: 0.002 min  
 Response: 274347  
 Conc: 11.58 ng/ml



#12 AR-1232-2

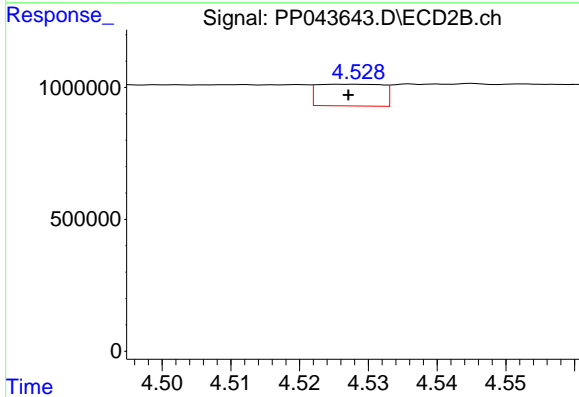
R.T.: 4.345 min  
 Delta R.T.: 0.003 min  
 Response: 663361  
 Conc: 18.58 ng/ml



#13 AR-1232-3

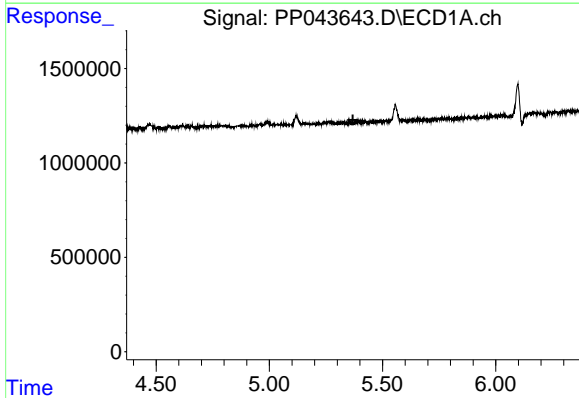
R.T.: 0.000 min  
 Exp R.T. : 5.197 min  
 Response: 0  
 Conc: N.D.

Instrument :  
 ECD\_P  
 ClientSampleId :  
 I.BLK



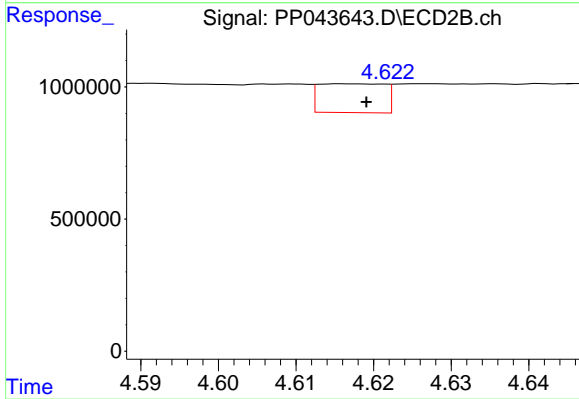
#13 AR-1232-3

R.T.: 4.528 min  
 Delta R.T.: 0.001 min  
 Response: 540422  
 Conc: 27.64 ng/ml



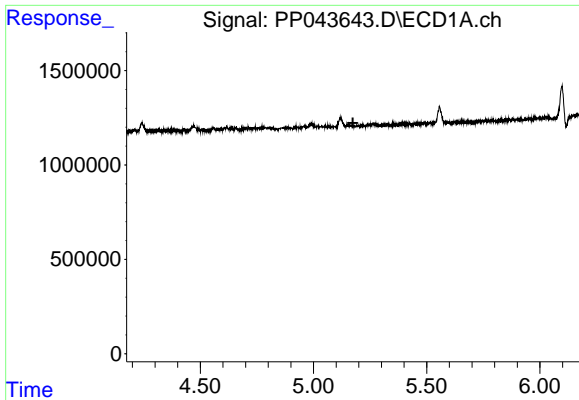
#14 AR-1232-4

R.T.: 0.000 min  
 Exp R.T. : 5.369 min  
 Response: 0  
 Conc: N.D.



#14 AR-1232-4

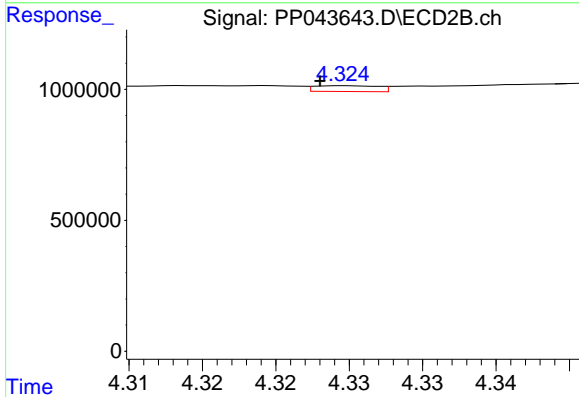
R.T.: 4.616 min  
 Delta R.T.: -0.003 min  
 Response: 644265  
 Conc: 37.26 ng/ml



#16 AR-1242-1

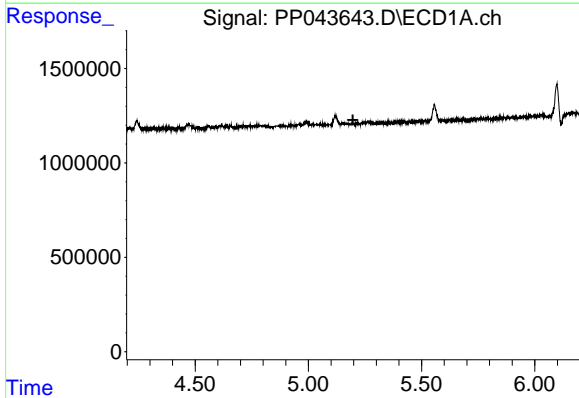
R.T.: 0.000 min  
 Exp R.T.: 5.174 min  
 Response: 0  
 Conc: N.D.

Instrument :  
 ECD\_P  
 ClientSampleId :  
 I.BLK



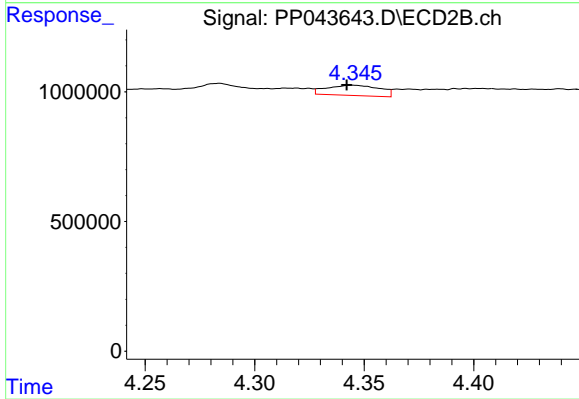
#16 AR-1242-1

R.T.: 4.325 min  
 Delta R.T.: 0.002 min  
 Response: 66247  
 Conc: 1.36 ng/ml



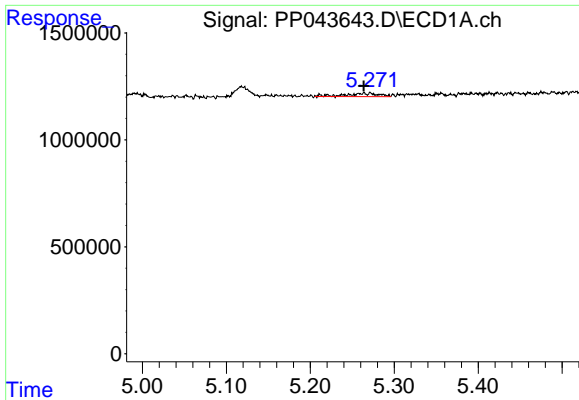
#17 AR-1242-2

R.T.: 0.000 min  
 Exp R.T.: 5.197 min  
 Response: 0  
 Conc: N.D.



#17 AR-1242-2

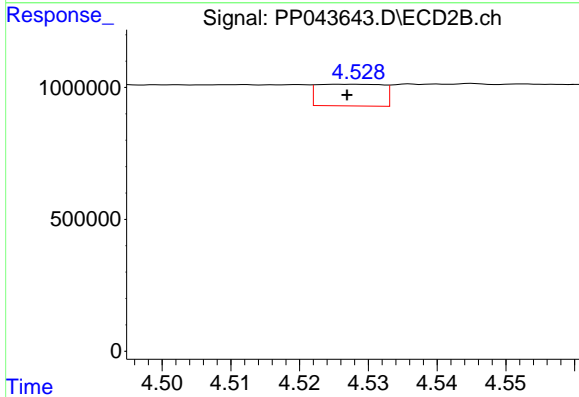
R.T.: 4.345 min  
 Delta R.T.: 0.002 min  
 Response: 663361  
 Conc: 9.85 ng/ml



#18 AR-1242-3

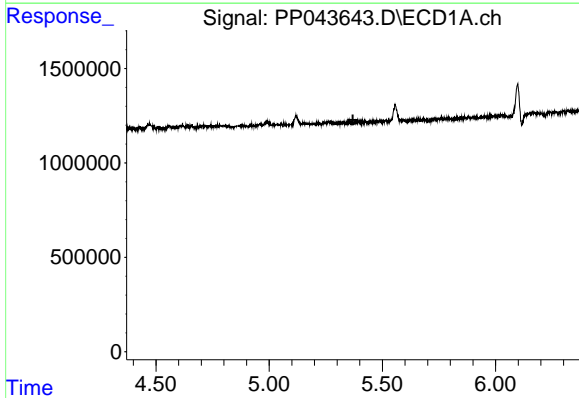
R.T.: 5.266 min  
 Delta R.T.: 0.002 min  
 Response: 442000  
 Conc: 8.54 ng/ml

Instrument :  
 ECD\_P  
 ClientSampleId :  
 I.BLK



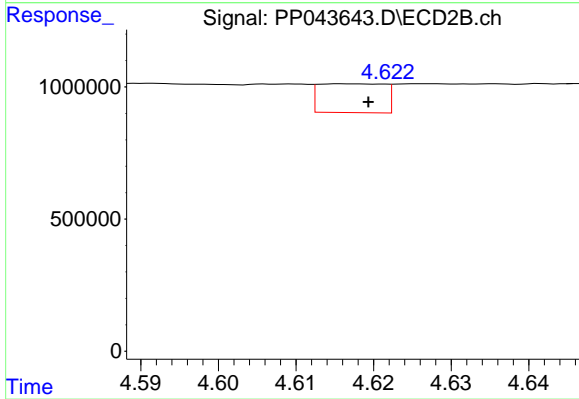
#18 AR-1242-3

R.T.: 4.528 min  
 Delta R.T.: 0.001 min  
 Response: 540422  
 Conc: 14.40 ng/ml



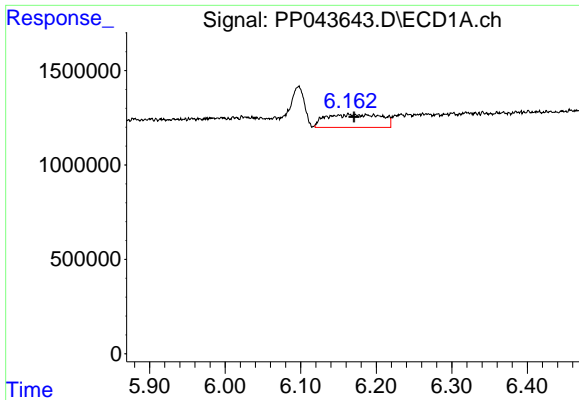
#19 AR-1242-4

R.T.: 0.000 min  
 Exp R.T. : 5.370 min  
 Response: 0  
 Conc: N.D.



#19 AR-1242-4

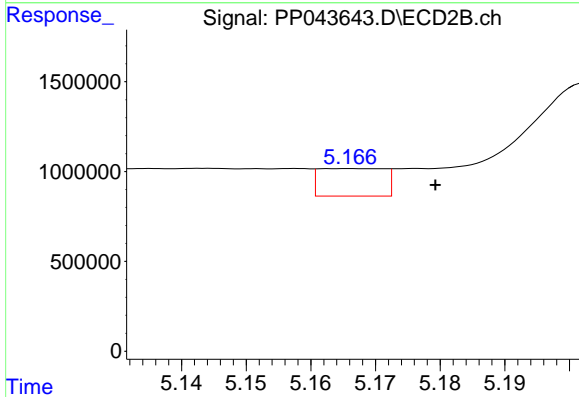
R.T.: 4.616 min  
 Delta R.T.: -0.003 min  
 Response: 644265  
 Conc: 17.84 ng/ml



#20 AR-1242-5

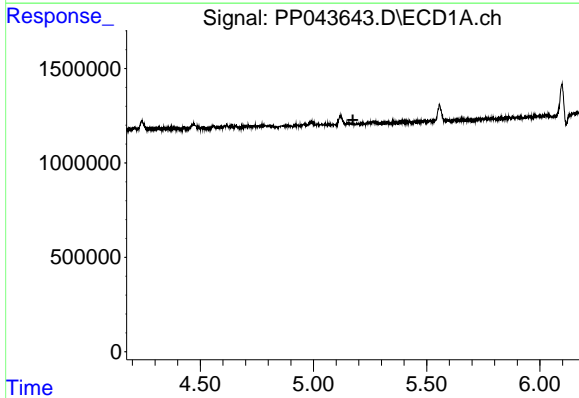
R.T.: 6.185 min  
 Delta R.T.: 0.014 min  
 Response: 3523187  
 Conc: 81.59 ng/ml

Instrument :  
 ECD\_P  
 ClientSampleId :  
 I.BLK



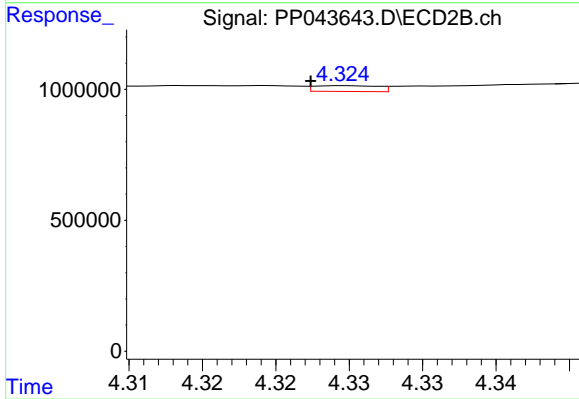
#20 AR-1242-5

R.T.: 5.166 min  
 Delta R.T.: -0.013 min  
 Response: 1076001  
 Conc: 25.00 ng/ml



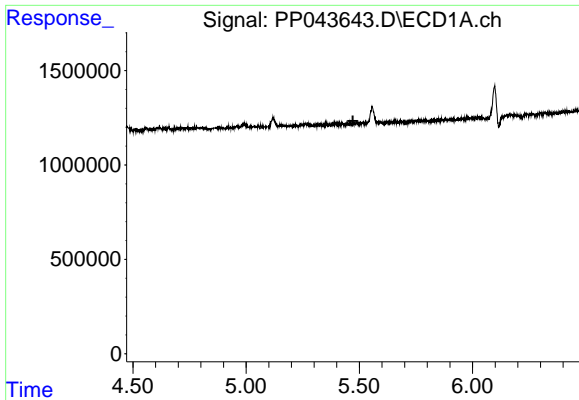
#21 AR-1248-1

R.T.: 0.000 min  
 Exp R.T. : 5.174 min  
 Response: 0  
 Conc: N.D.



#21 AR-1248-1

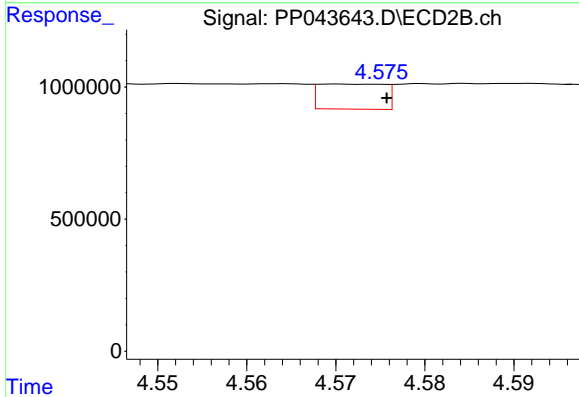
R.T.: 4.325 min  
 Delta R.T.: 0.002 min  
 Response: 66247  
 Conc: 1.78 ng/ml



#22 AR-1248-2

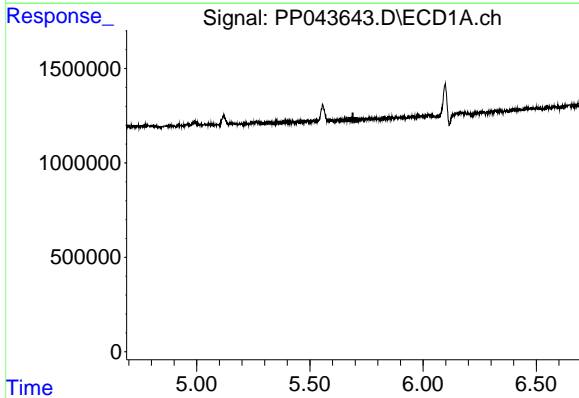
R.T.: 0.000 min  
 Exp R.T.: 5.472 min  
 Response: 0  
 Conc: N.D.

Instrument :  
 ECD\_P  
 ClientSampleId :  
 I.BLK



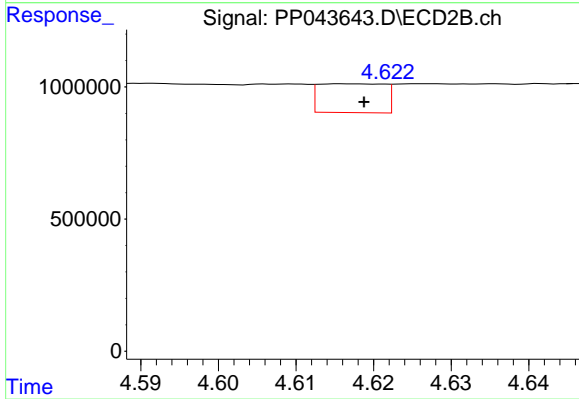
#22 AR-1248-2

R.T.: 4.570 min  
 Delta R.T.: -0.006 min  
 Response: 487636  
 Conc: 9.97 ng/ml



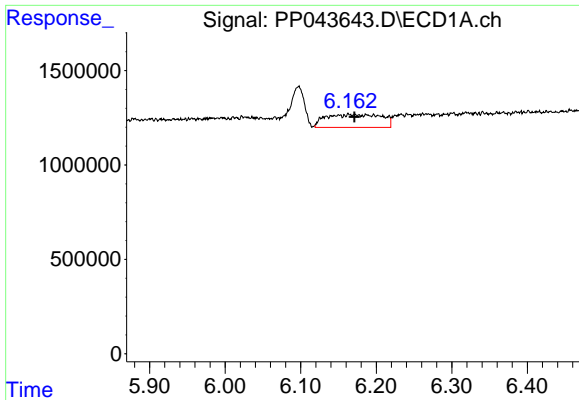
#23 AR-1248-3

R.T.: 0.000 min  
 Exp R.T.: 5.690 min  
 Response: 0  
 Conc: N.D.



#23 AR-1248-3

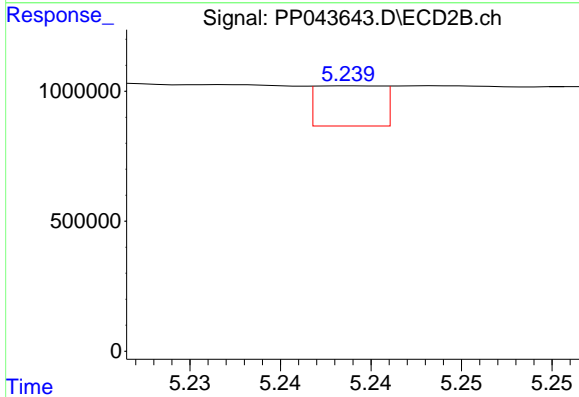
R.T.: 4.616 min  
 Delta R.T.: -0.003 min  
 Response: 644265  
 Conc: 12.56 ng/ml



#25 AR-1248-5

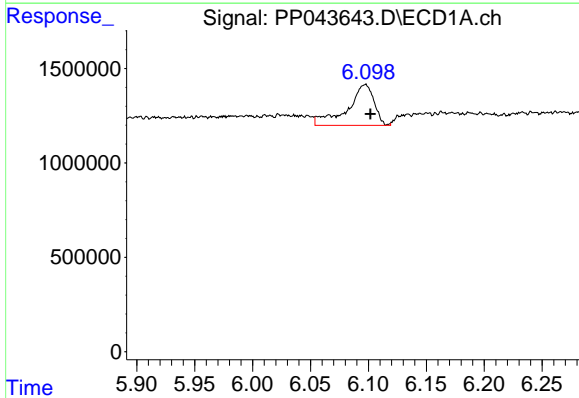
R.T.: 6.185 min  
 Delta R.T.: 0.014 min  
 Response: 3523187  
 Conc: 50.96 ng/ml

Instrument :  
 ECD\_P  
 ClientSampleId :  
 I.BLK



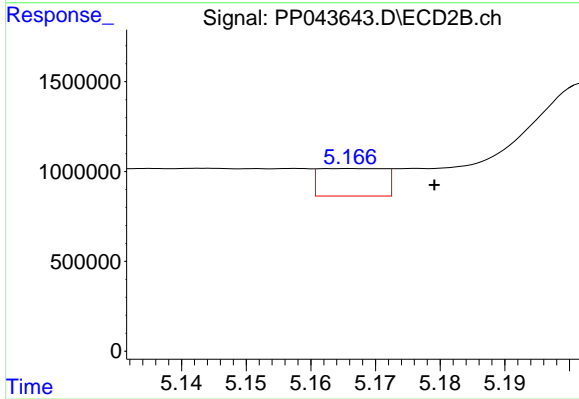
#25 AR-1248-5

R.T.: 5.239 min  
 Delta R.T.: 0.017 min  
 Response: 394789  
 Conc: 6.89 ng/ml



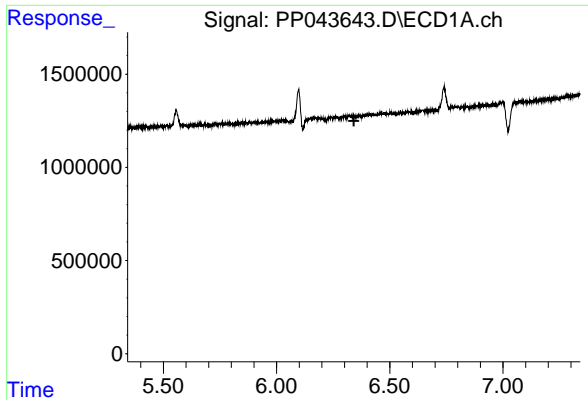
#26 AR-1254-1

R.T.: 6.096 min  
 Delta R.T.: -0.005 min  
 Response: 3459687  
 Conc: 45.79 ng/ml



#26 AR-1254-1

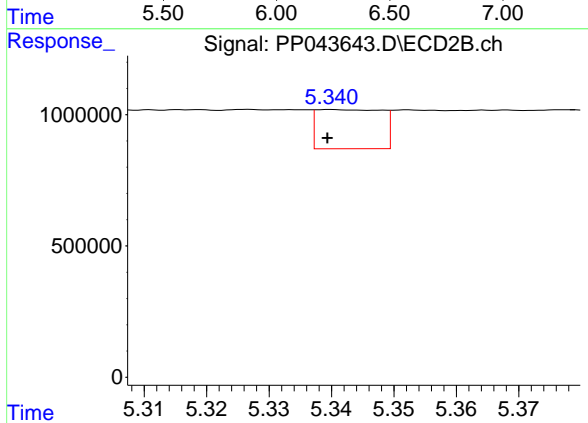
R.T.: 5.166 min  
 Delta R.T.: -0.013 min  
 Response: 1076001  
 Conc: 12.32 ng/ml



#27 AR-1254-2

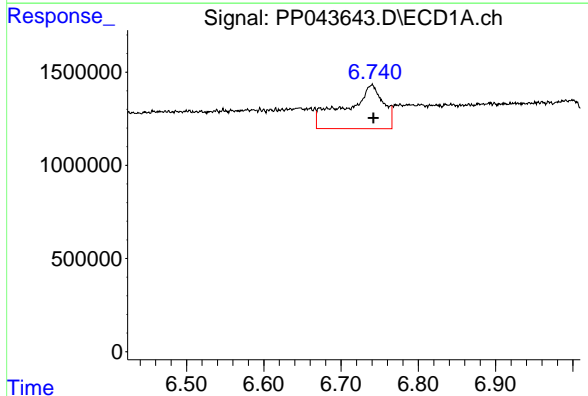
R.T.: 0.000 min  
 Exp R.T.: 6.342 min  
 Response: 0  
 Conc: N.D.

Instrument :  
 ECD\_P  
 ClientSampleId :  
 I.BLK



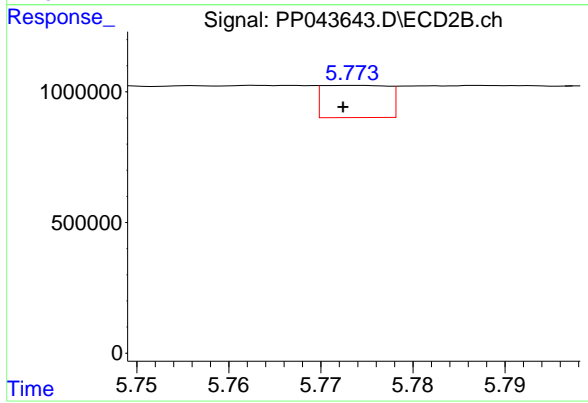
#27 AR-1254-2

R.T.: 5.340 min  
 Delta R.T.: 0.000 min  
 Response: 1081684  
 Conc: 14.18 ng/ml



#28 AR-1254-3

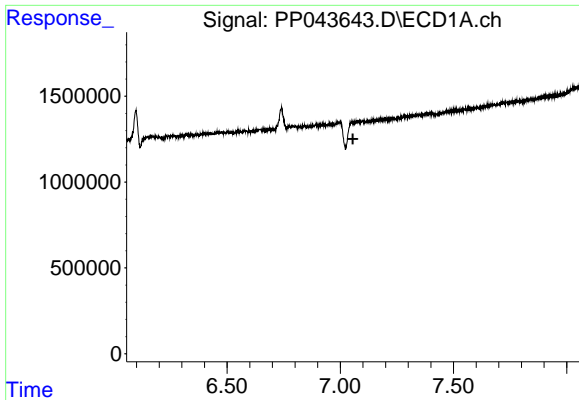
R.T.: 6.740 min  
 Delta R.T.: -0.002 min  
 Response: 8005460  
 Conc: 69.18 ng/ml



#28 AR-1254-3

R.T.: 5.774 min  
 Delta R.T.: 0.001 min  
 Response: 610236  
 Conc: 4.98 ng/ml

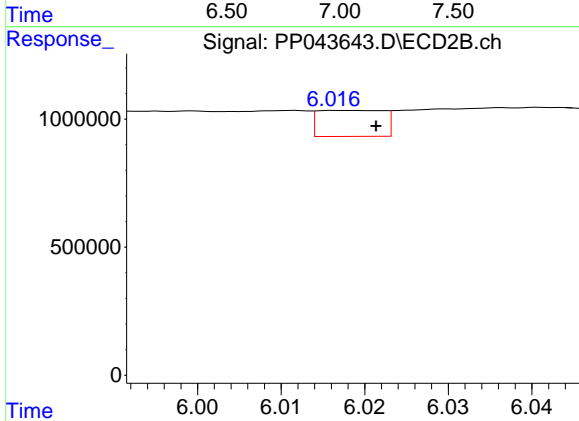




#29 AR-1254-4

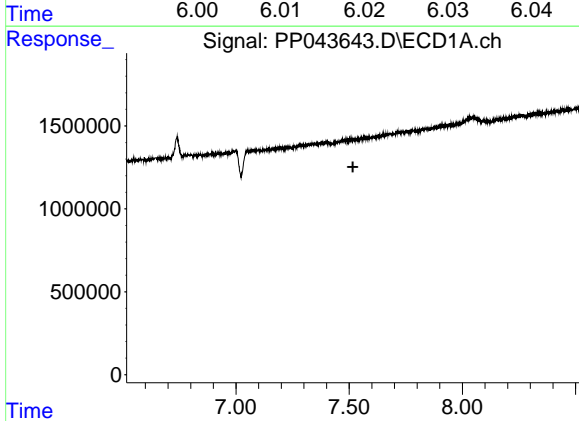
R.T.: 0.000 min  
 Exp R.T.: 7.056 min  
 Response: 0  
 Conc: N.D.

Instrument :  
 ECD\_P  
 ClientSampleId :  
 I.BLK



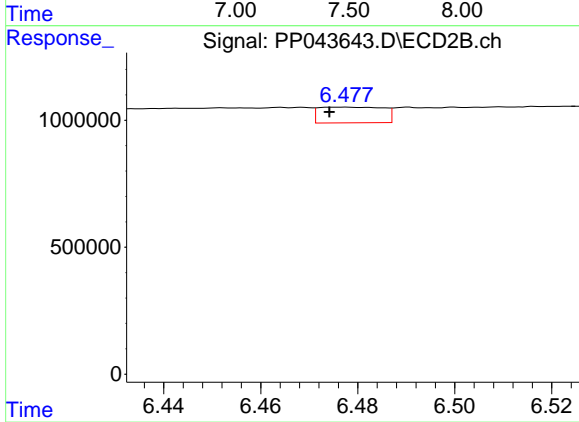
#29 AR-1254-4

R.T.: 6.017 min  
 Delta R.T.: -0.005 min  
 Response: 554079  
 Conc: 7.02 ng/ml



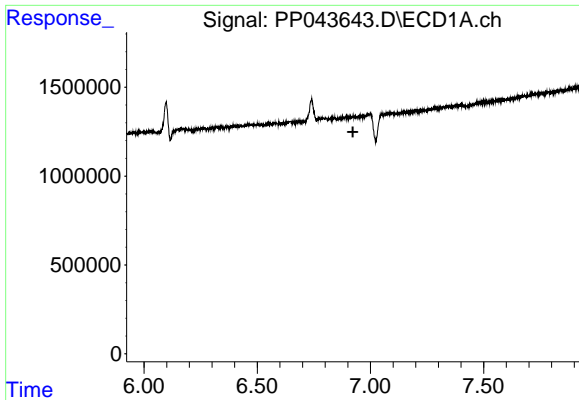
#30 AR-1254-5

R.T.: 0.000 min  
 Exp R.T.: 7.517 min  
 Response: 0  
 Conc: N.D.



#30 AR-1254-5

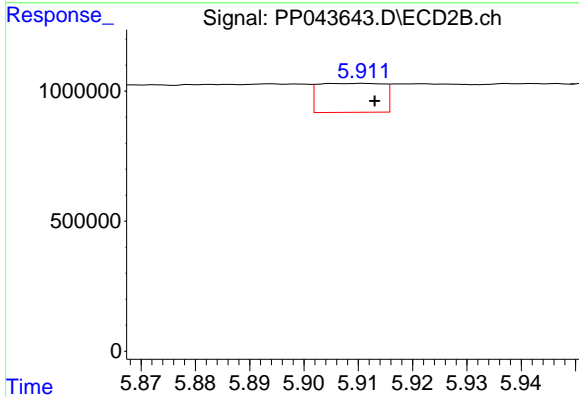
R.T.: 6.477 min  
 Delta R.T.: 0.003 min  
 Response: 569571  
 Conc: 4.93 ng/ml



#31 AR-1260-1

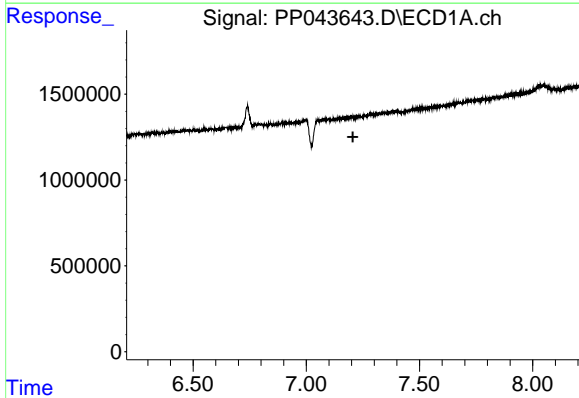
R.T.: 0.000 min  
 Exp R.T.: 6.923 min  
 Response: 0  
 Conc: N.D.

Instrument :  
 ECD\_P  
 ClientSampleId :  
 I.BLK



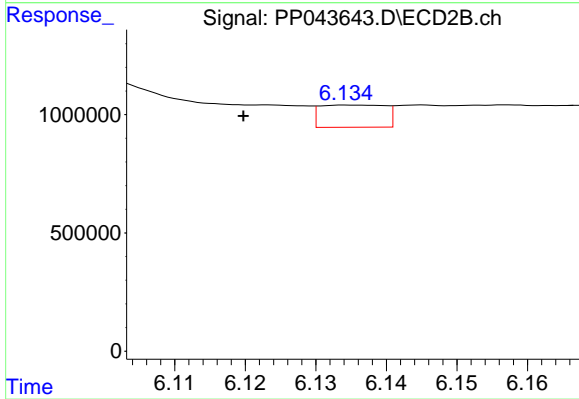
#31 AR-1260-1

R.T.: 5.911 min  
 Delta R.T.: -0.002 min  
 Response: 924486  
 Conc: 11.56 ng/ml



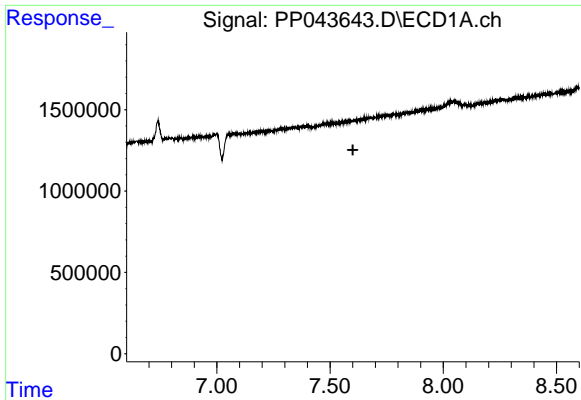
#32 AR-1260-2

R.T.: 0.000 min  
 Exp R.T.: 7.206 min  
 Response: 0  
 Conc: N.D.



#32 AR-1260-2

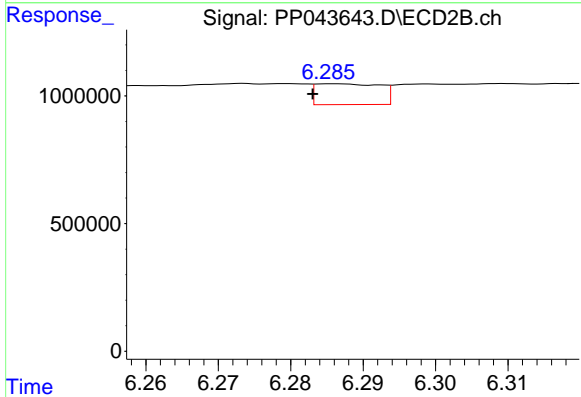
R.T.: 6.135 min  
 Delta R.T.: 0.015 min  
 Response: 601503  
 Conc: 6.16 ng/ml



#33 AR-1260-3

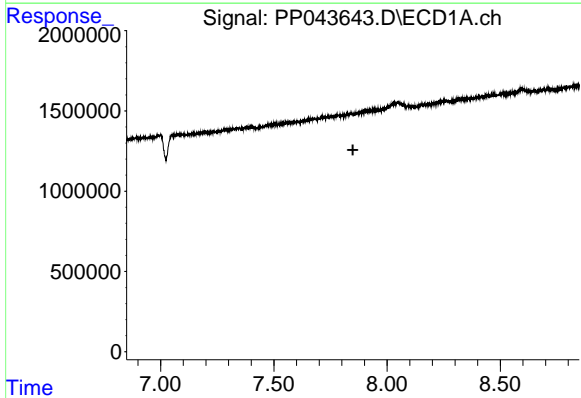
R.T.: 0.000 min  
 Exp R.T. : 7.601 min  
 Response: 0  
 Conc: N.D.

Instrument :  
 ECD\_P  
 ClientSampleId :  
 I.BLK



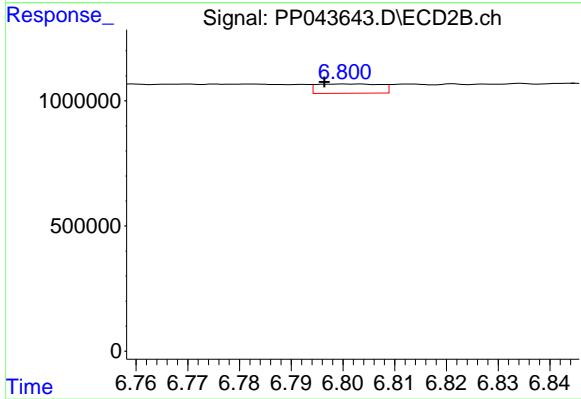
#33 AR-1260-3

R.T.: 6.286 min  
 Delta R.T.: 0.003 min  
 Response: 503286  
 Conc: 5.51 ng/ml



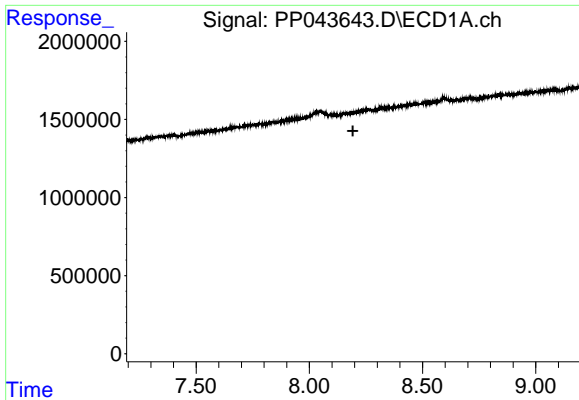
#34 AR-1260-4

R.T.: 0.000 min  
 Exp R.T. : 7.849 min  
 Response: 0  
 Conc: N.D.



#34 AR-1260-4

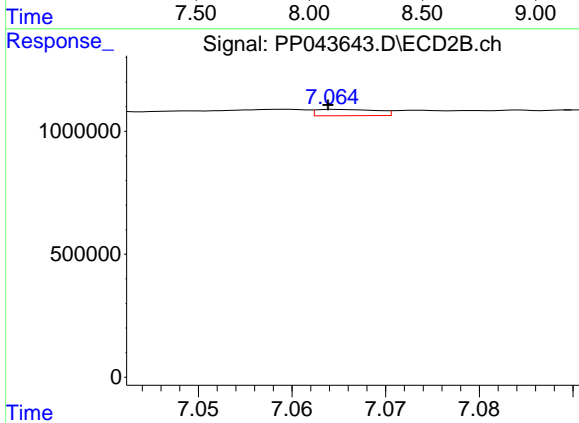
R.T.: 6.800 min  
 Delta R.T.: 0.004 min  
 Response: 317761  
 Conc: 3.93 ng/ml



#35 AR-1260-5

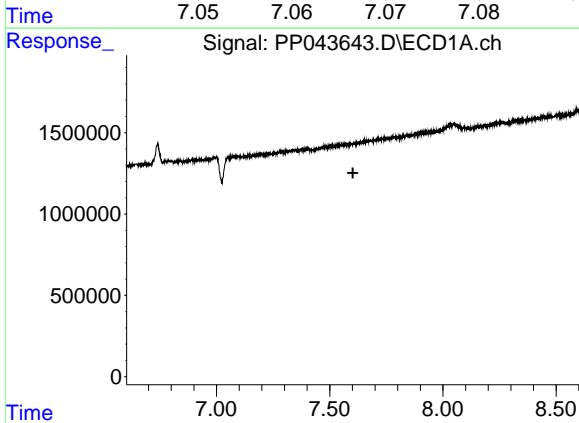
R.T.: 0.000 min  
 Exp R.T.: 8.192 min  
 Response: 0  
 Conc: N.D.

Instrument :  
 ECD\_P  
 ClientSampleId :  
 I.BLK



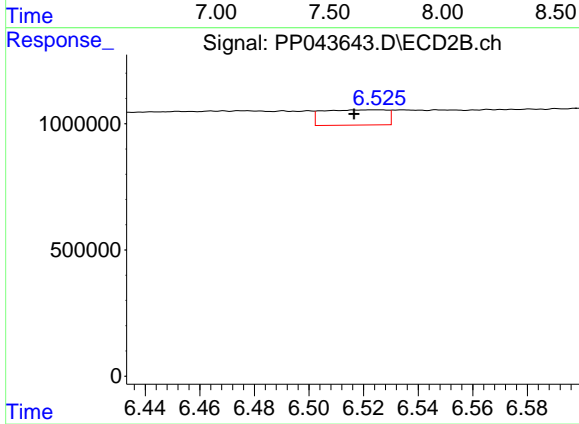
#35 AR-1260-5

R.T.: 7.065 min  
 Delta R.T.: 0.000 min  
 Response: 116255  
 Conc: 0.63 ng/ml



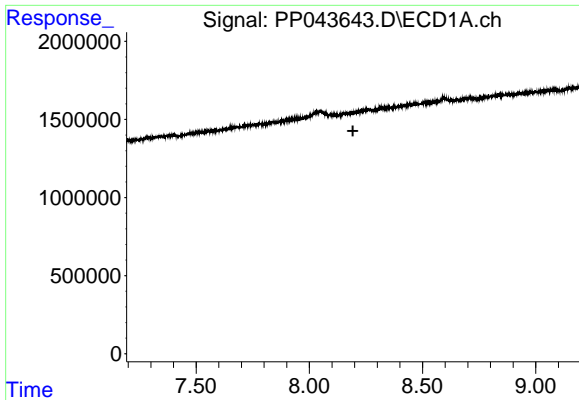
#36 AR-1262-1

R.T.: 0.000 min  
 Exp R.T.: 7.602 min  
 Response: 0  
 Conc: N.D.



#36 AR-1262-1

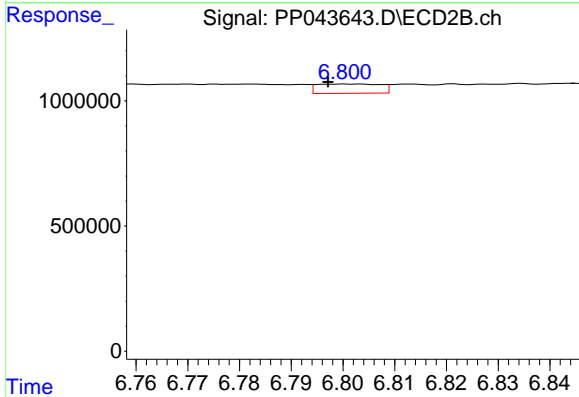
R.T.: 6.526 min  
 Delta R.T.: 0.010 min  
 Response: 980997  
 Conc: 8.92 ng/ml



#37 AR-1262-2

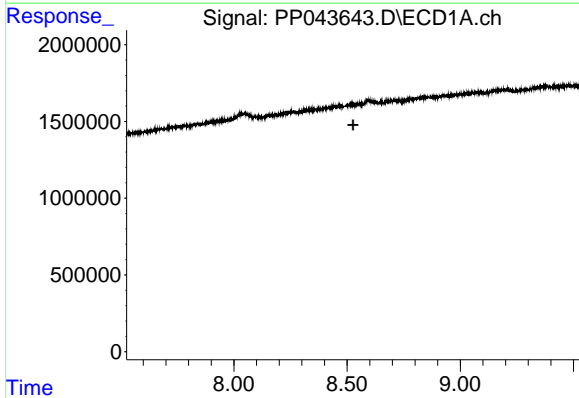
R.T.: 0.000 min  
 Exp R.T. : 8.193 min  
 Response: 0  
 Conc: N.D.

Instrument :  
 ECD\_P  
 ClientSampleId :  
 I.BLK



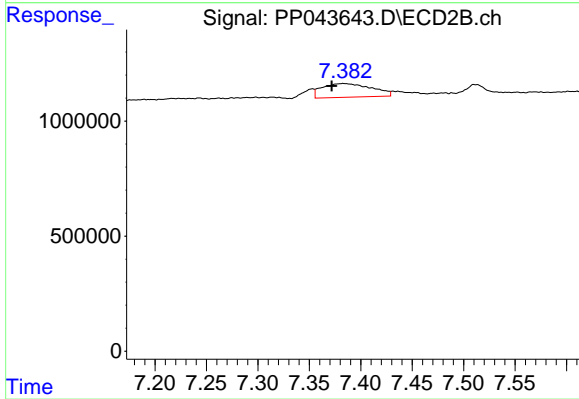
#37 AR-1262-2

R.T.: 6.800 min  
 Delta R.T.: 0.003 min  
 Response: 317761  
 Conc: 3.12 ng/ml



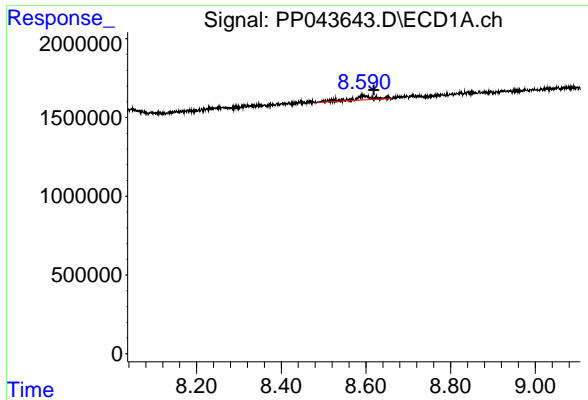
#38 AR-1262-3

R.T.: 0.000 min  
 Exp R.T. : 8.526 min  
 Response: 0  
 Conc: N.D.



#38 AR-1262-3

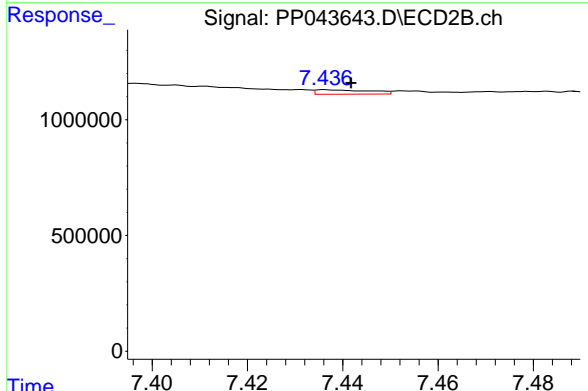
R.T.: 7.383 min  
 Delta R.T.: 0.011 min  
 Response: 1997543  
 Conc: 23.44 ng/ml



#39 AR-1262-4

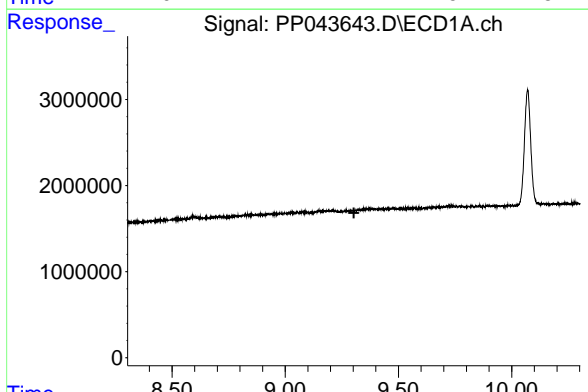
R.T.: 8.595 min  
 Delta R.T.: -0.024 min  
 Response: 887445  
 Conc: 18.51 ng/ml

Instrument :  
 ECD\_P  
 ClientSampleId :  
 I.BLK



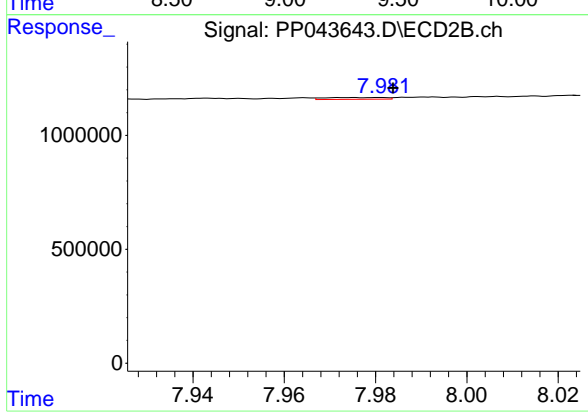
#39 AR-1262-4

R.T.: 7.436 min  
 Delta R.T.: -0.005 min  
 Response: 149785  
 Conc: 0.96 ng/ml



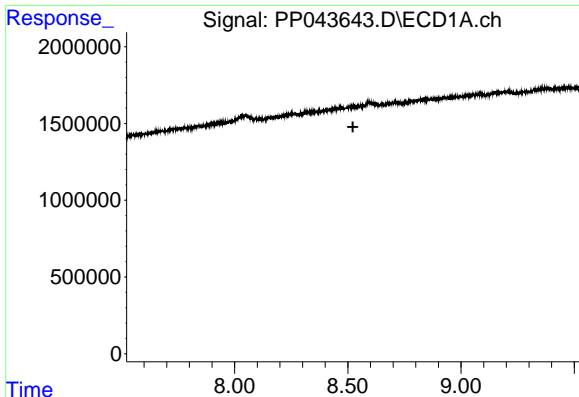
#40 AR-1262-5

R.T.: 0.000 min  
 Exp R.T. : 9.303 min  
 Response: 0  
 Conc: N.D.



#40 AR-1262-5

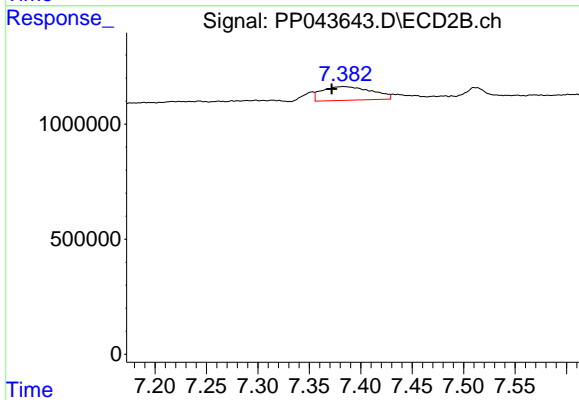
R.T.: 7.981 min  
 Delta R.T.: -0.003 min  
 Response: 73310  
 Conc: 0.94 ng/ml



#41 AR-1268-1

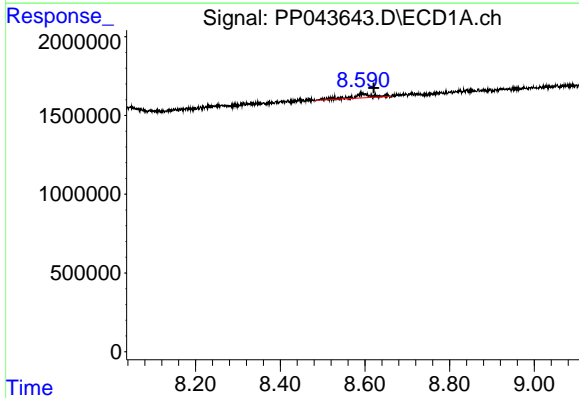
R.T.: 0.000 min  
 Exp R.T.: 8.523 min  
 Response: 0  
 Conc: N.D.

Instrument :  
 ECD\_P  
 ClientSampleId :  
 I.BLK



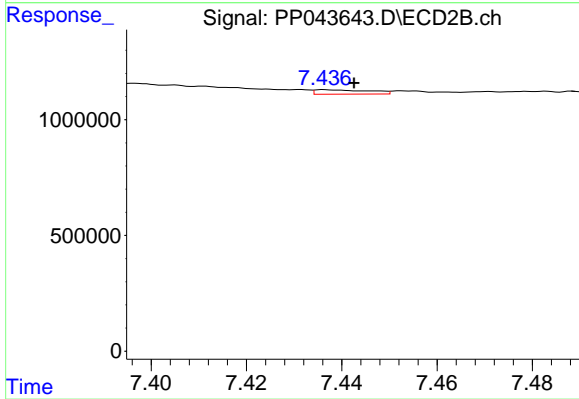
#41 AR-1268-1

R.T.: 7.383 min  
 Delta R.T.: 0.011 min  
 Response: 1997543  
 Conc: 7.88 ng/ml



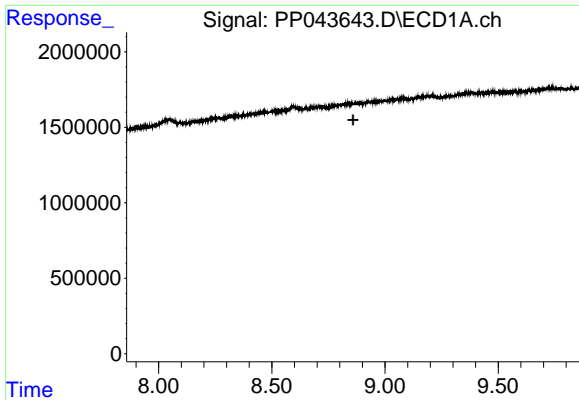
#42 AR-1268-2

R.T.: 8.595 min  
 Delta R.T.: -0.026 min  
 Response: 887445  
 Conc: 5.07 ng/ml



#42 AR-1268-2

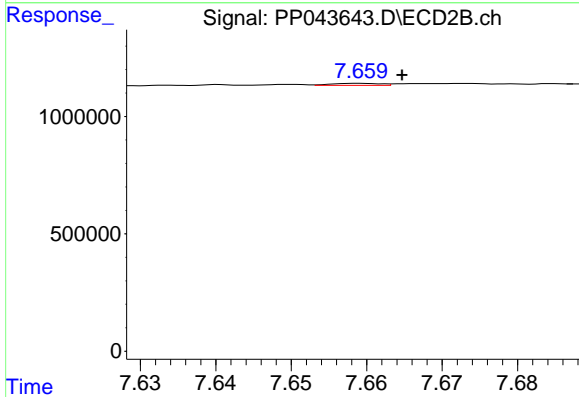
R.T.: 7.436 min  
 Delta R.T.: -0.006 min  
 Response: 149785  
 Conc: 0.66 ng/ml



#43 AR-1268-3

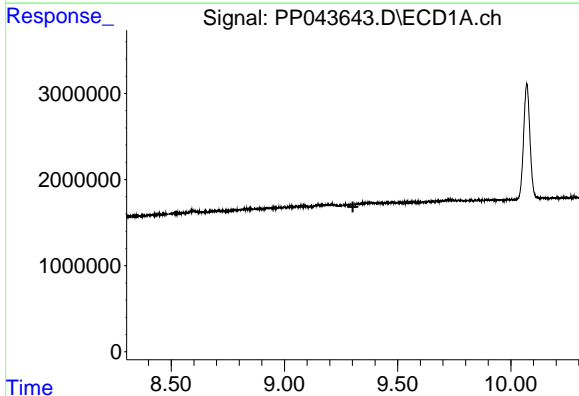
R.T.: 0.000 min  
 Exp R.T. : 8.859 min  
 Response: 0  
 Conc: N.D.

Instrument :  
 ECD\_P  
 ClientSampleId :  
 I.BLK



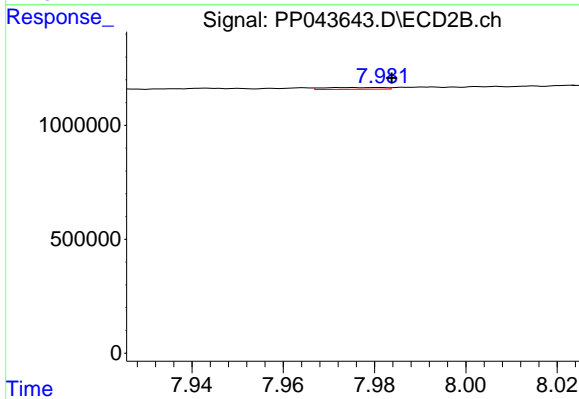
#43 AR-1268-3

R.T.: 7.659 min  
 Delta R.T.: -0.006 min  
 Response: 39572  
 Conc: 0.20 ng/ml



#44 AR-1268-4

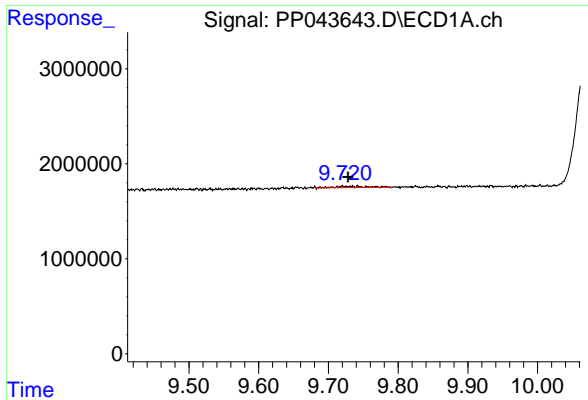
R.T.: 0.000 min  
 Exp R.T. : 9.302 min  
 Response: 0  
 Conc: N.D.



#44 AR-1268-4

R.T.: 7.981 min  
 Delta R.T.: -0.002 min  
 Response: 73310  
 Conc: 0.82 ng/ml

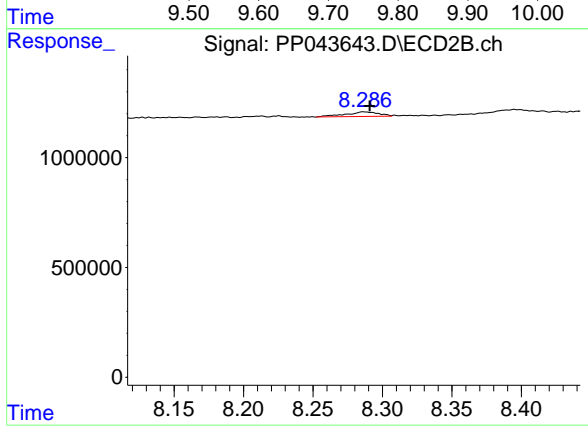




#45 AR-1268-5

R.T.: 9.732 min  
 Delta R.T.: 0.004 min  
 Response: 448818  
 Conc: 0.99 ng/ml

Instrument :  
 ECD\_P  
 ClientSampleId :  
 I.BLK



#45 AR-1268-5

R.T.: 8.286 min  
 Delta R.T.: -0.005 min  
 Response: 354382  
 Conc: 0.59 ng/ml