

Data Path : Z:\pestpcbsrv\HPCHEM1\ECD_P\Data\PP021122\
 Data File : PP043647.D
 Signal(s) : Signal #1: ECD1A.ch Signal #2: ECD2B.ch
 Acq On : 12 Feb 2022 02:26
 Operator : YP\AJ
 Sample : N1505-01
 Misc :
 ALS Vial : 41 Sample Multiplier: 1

Instrument :
 ECD_P
 ClientSampleId :
 SU-02-021022

Integration File signal 1: autoint1.e
 Integration File signal 2: autoint2.e
 Quant Time: Feb 12 04:59:56 2022
 Quant Method : Z:\pestpcbsrv\HPCHEM1\ECD_P\methods\PP021022.M
 Quant Title : GC EXTRACTABLES
 QLast Update : Fri Feb 11 04:48:05 2022
 Response via : Initial Calibration
 Integrator: ChemStation

Volume Inj. : 2 µl
 Signal #1 Phase : ZB-MR1 Signal #2 Phase: ZB-MR2
 Signal #1 Info : 30Mx0.32mmx 0.50µ Signal #2 Info : 30M x 0.32mm x 0.25µm

Compound	RT#1	RT#2	Resp#1	Resp#2	ng/ml	ng/ml
System Monitoring Compounds						
1) SA Tetrachlo...	3.919	3.175	27980435	32994780	12.655	17.567 #
2) SA Decachlor...	10.070	8.553	18979384	21910308	15.977	13.505
Target Compounds						
3) L1 AR-1016-1	5.180	4.351f	3142828	4978216	43.312	81.251 #
4) L1 AR-1016-2	5.190	4.351	4746323	4978216	45.001	58.921 #
5) L1 AR-1016-3	5.259	4.520	10833505	15521913	164.530	332.255 #
6) L1 AR-1016-4	5.350f	4.556f	6627201	14095905	122.205	377.189 #
7) L1 AR-1016-5	5.685	4.800	8747782	43774430	166.536	958.229 #
8) L2 AR-1221-1	4.138	3.400	1881982	494871	73.921	20.746 #
9) L2 AR-1221-2	4.248	3.489	2431090	1473683	126.630	81.599 #
10) L2 AR-1221-3	4.338f	3.581	8187313	2554557	142.522	49.519 #
11) L3 AR-1232-1	4.338f	3.581	8187313	2554557	168.700	59.374 #
12) L3 AR-1232-2	4.879	4.351	6984471	4978216	294.739	139.454 #
13) L3 AR-1232-3	5.190	4.520	4746323	15521913	110.242	793.791 #
14) L3 AR-1232-4	5.350f	4.632	6627201	30827987	303.606	1782.752 #
15) L3 AR-1232-5	5.464	4.800	12146648	43774430	753.084	2330.389 #
16) L4 AR-1242-1	5.180	4.351f	3142828	4978216	55.930	102.122 #
17) L4 AR-1242-2	5.190	4.351	4746323	4978216	57.368	73.932 #
18) L4 AR-1242-3	5.259	4.520	10833505	15521913	209.303	413.493 #
19) L4 AR-1242-4	5.350f	4.632	6627201	30827987	155.158	853.736 #
20) L4 AR-1242-5	6.175	5.175	1302225	25754103	30.157	598.266 #
21) L5 AR-1248-1	5.180	4.351f	3142828	4978216	76.659	133.642 #
22) L5 AR-1248-2	5.464	4.556f	12146648	14095905	213.801	288.134 #
23) L5 AR-1248-3	5.685	4.632	8747782	30827987	131.119	600.758 #
24) L5 AR-1248-4	6.130	4.800	1580955	43774430	22.628	746.673 #
25) L5 AR-1248-5	6.175	5.226	1302225	30654838	18.837	535.011 #
26) L6 AR-1254-1	6.089	5.175	1106802	25754103	14.649	294.897 #
27) L6 AR-1254-2	6.338	5.317f	516704	30996704	4.606	406.369 #
28) L6 AR-1254-3	6.755	5.795f	3652972	3460884	31.569	28.239
29) L6 AR-1254-4	7.042	0.000	906485	0	11.355	N.D. #
30) L6 AR-1254-5	7.540f	6.473	6943582	6190759	80.962	53.533 #
31) L7 AR-1260-1	0.000	5.907	0	1869482	N.D.	23.377 #
32) L7 AR-1260-2	7.197	6.127	4182598	1092957	46.206	11.192 #
33) L7 AR-1260-3	7.608	6.271	184363	288418	2.543	3.159
34) L7 AR-1260-4	7.852	6.798	1312210	327432	15.284	4.047 #
35) L7 AR-1260-5	8.192	7.060	115801	295578	0.747	1.599 #
36) L8 AR-1262-1	7.608	6.519	184363	119180	1.867	1.084 #
37) L8 AR-1262-2	8.192	6.798	115801	327432	0.717	3.210 #
38) L8 AR-1262-3	8.541	7.380	74580	717388	0.682	8.418 #
39) L8 AR-1262-4	8.621	7.415f	198153	1248841	4.132	8.041 #
40) L8 AR-1262-5	9.288f	7.982	18233	171302	0.327	2.202 #
41) L9 AR-1268-1	8.505f	7.380	36560	717388	0.188	2.831 #

Data Path : Z:\pestpcbsrv\HPCHEM1\ECD_P\Data\PP021122\
 Data File : PP043647.D
 Signal(s) : Signal #1: ECD1A.ch Signal #2: ECD2B.ch
 Acq On : 12 Feb 2022 02:26
 Operator : YP\AJ
 Sample : N1505-01
 Misc :
 ALS Vial : 41 Sample Multiplier: 1

Instrument :
 ECD_P
 ClientSampleId :
 SU-02-021022

Integration File signal 1: autoint1.e
 Integration File signal 2: autoint2.e
 Quant Time: Feb 12 04:59:56 2022
 Quant Method : Z:\pestpcbsrv\HPCHEM1\ECD_P\methods\PP021022.M
 Quant Title : GC EXTRACTABLES
 QLast Update : Fri Feb 11 04:48:05 2022
 Response via : Initial Calibration
 Integrator: ChemStation

Volume Inj. : 2 µl
 Signal #1 Phase : ZB-MR1 Signal #2 Phase: ZB-MR2
 Signal #1 Info : 30Mx0.32mmx 0.50µ Signal #2 Info : 30M x 0.32mm x 0.25µm

	Compound	RT#1	RT#2	Resp#1	Resp#2	ng/ml	ng/ml
42)	L9 AR-1268-2	8.621	7.415f	198153	1248841	1.132	5.527 #
43)	L9 AR-1268-3	8.865	7.652	417772	219983	2.706	1.130 #
44)	L9 AR-1268-4	9.288	7.982	18233	171302	0.291	1.905 #
45)	L9 AR-1268-5	9.704f	8.292	257438	380249	0.566	0.633

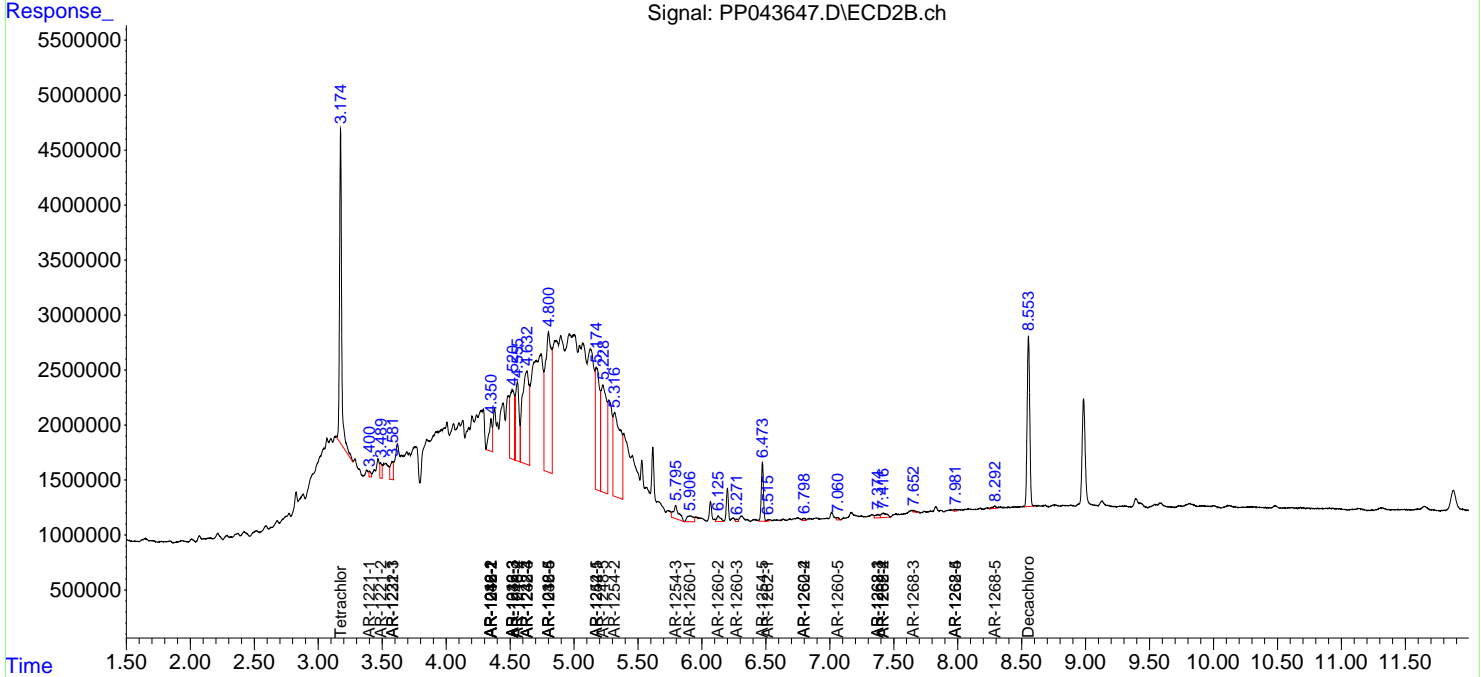
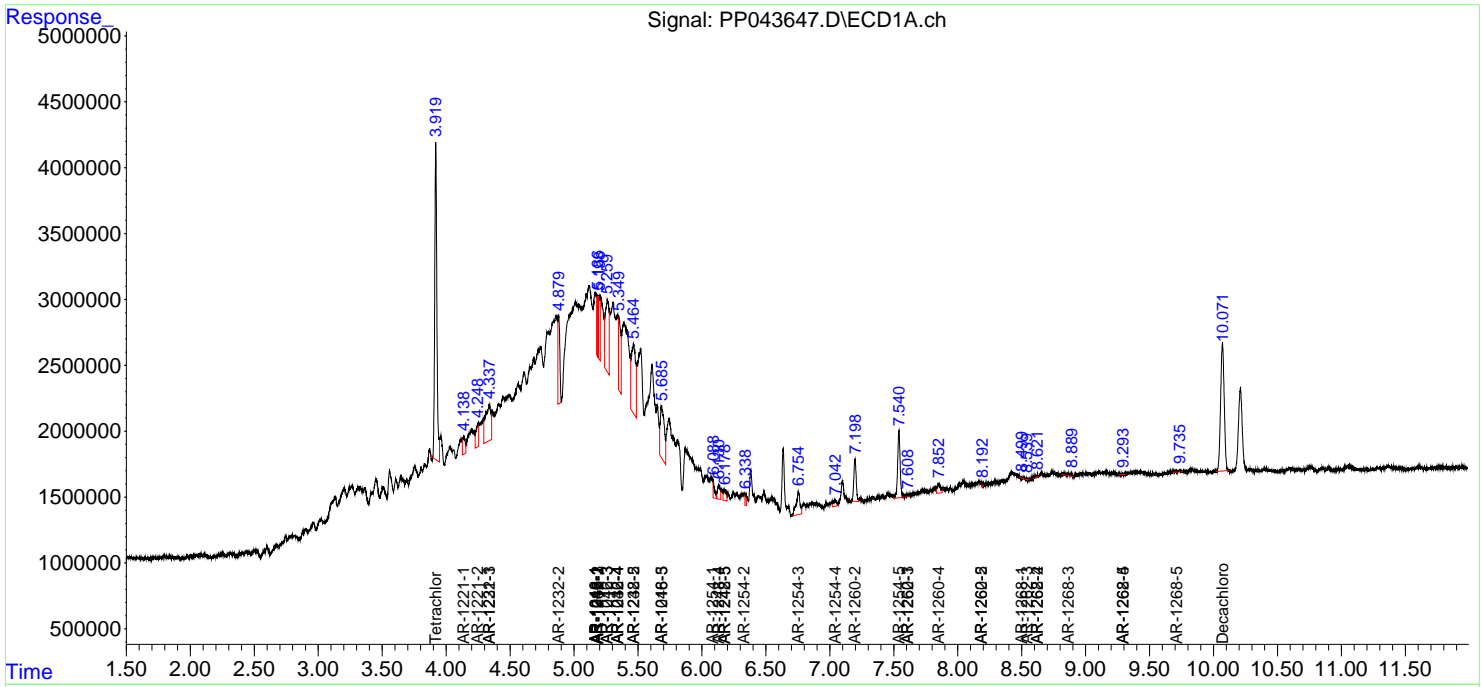
(f)=RT Delta > 1/2 Window (#)=Amounts differ by > 25% (m)=manual int.

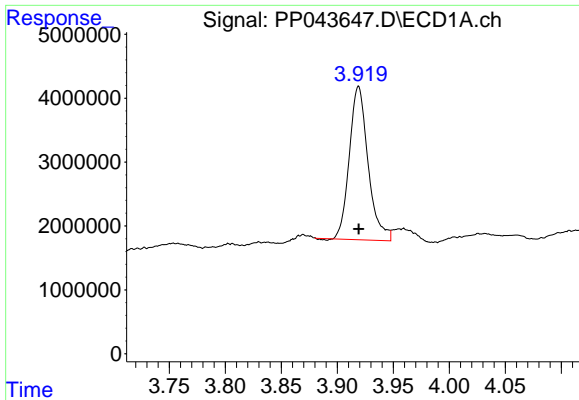
Data Path : Z:\pestpcbsrv\HPCHEM1\ECD_P\Data\PP021122\
 Data File : PP043647.D
 Signal(s) : Signal #1: ECD1A.ch Signal #2: ECD2B.ch
 Acq On : 12 Feb 2022 02:26
 Operator : YP\AJ
 Sample : N1505-01
 Misc :
 ALS Vial : 41 Sample Multiplier: 1

Instrument :
 ECD_P
ClientSampleId :
 SU-02-021022

Integration File signal 1: autoint1.e
 Integration File signal 2: autoint2.e
 Quant Time: Feb 12 04:59:56 2022
 Quant Method : Z:\pestpcbsrv\HPCHEM1\ECD_P\methods\PP021022.M
 Quant Title : GC EXTRACTABLES
 QLast Update : Fri Feb 11 04:48:05 2022
 Response via : Initial Calibration
 Integrator: ChemStation

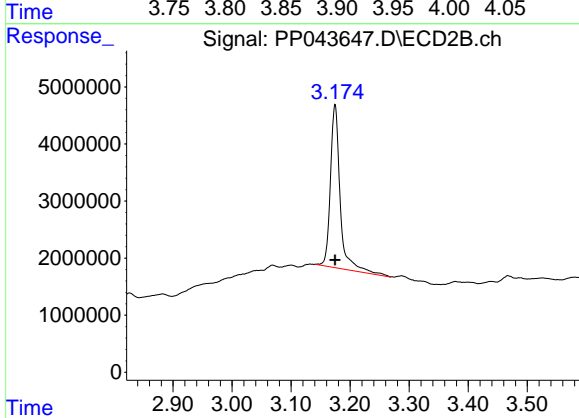
Volume Inj. : 2 µl
 Signal #1 Phase : ZB-MR1 Signal #2 Phase: ZB-MR2
 Signal #1 Info : 30Mx0.32mmx 0.50µ Signal #2 Info : 30M x 0.32mm x 0.25µm



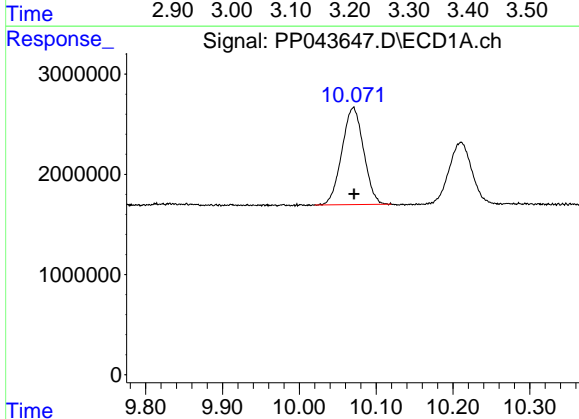


#1 Tetrachloro-m-xylene
 R.T.: 3.919 min
 Delta R.T.: 0.000 min
 Response: 27980435
 Conc: 12.65 ng/ml

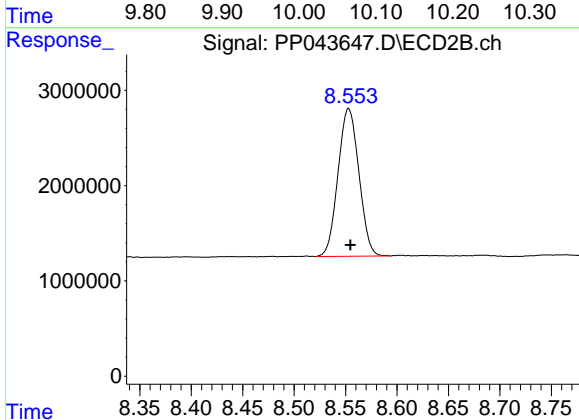
Instrument :
 ECD_P
 ClientSampleId :
 SU-02-021022



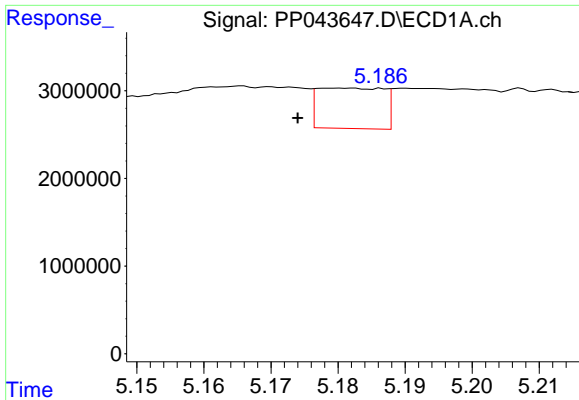
#1 Tetrachloro-m-xylene
 R.T.: 3.175 min
 Delta R.T.: 0.000 min
 Response: 32994780
 Conc: 17.57 ng/ml



#2 Decachlorobiphenyl
 R.T.: 10.070 min
 Delta R.T.: -0.001 min
 Response: 18979384
 Conc: 15.98 ng/ml



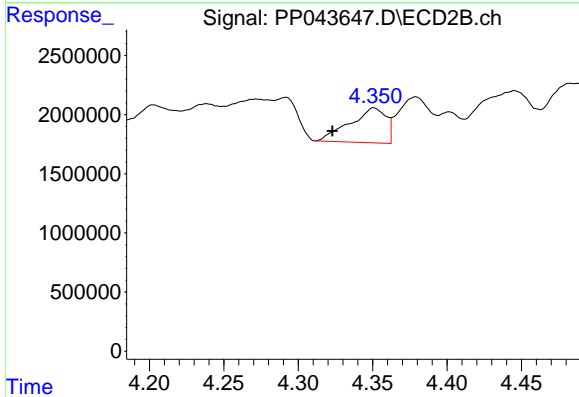
#2 Decachlorobiphenyl
 R.T.: 8.553 min
 Delta R.T.: -0.002 min
 Response: 21910308
 Conc: 13.50 ng/ml



#3 AR-1016-1

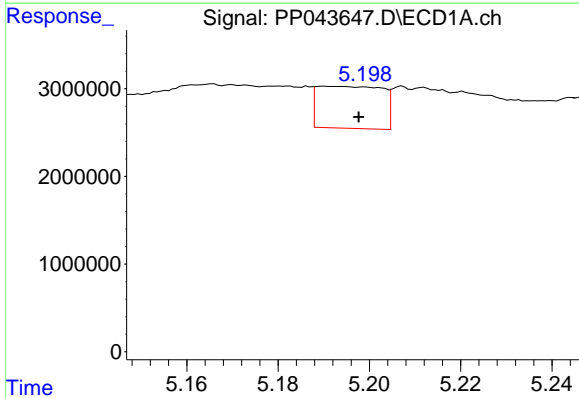
R.T.: 5.180 min
 Delta R.T.: 0.006 min
 Response: 3142828
 Conc: 43.31 ng/ml

Instrument :
 ECD_P
 ClientSampleId :
 SU-02-021022



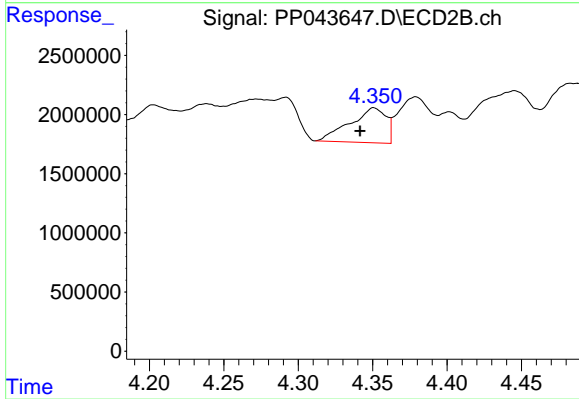
#3 AR-1016-1

R.T.: 4.351 min
 Delta R.T.: 0.028 min
 Response: 4978216
 Conc: 81.25 ng/ml



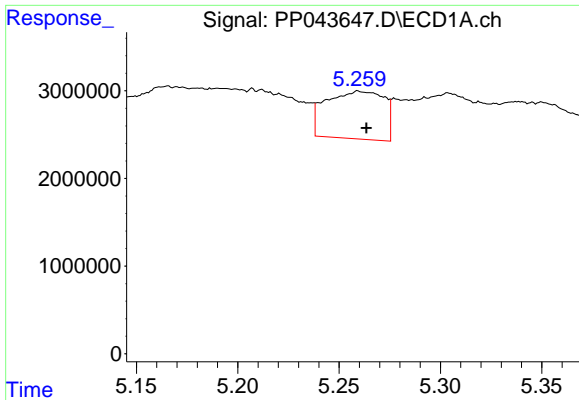
#4 AR-1016-2

R.T.: 5.190 min
 Delta R.T.: -0.007 min
 Response: 4746323
 Conc: 45.00 ng/ml



#4 AR-1016-2

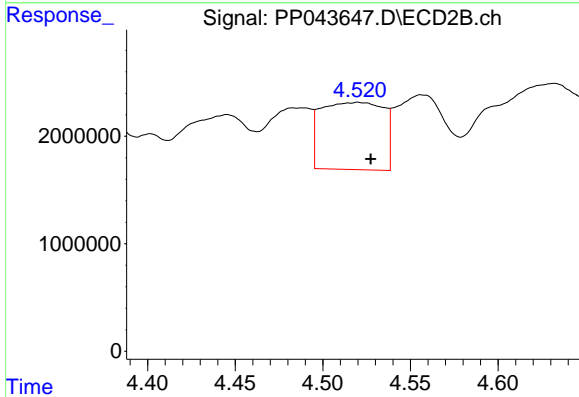
R.T.: 4.351 min
 Delta R.T.: 0.009 min
 Response: 4978216
 Conc: 58.92 ng/ml



#5 AR-1016-3

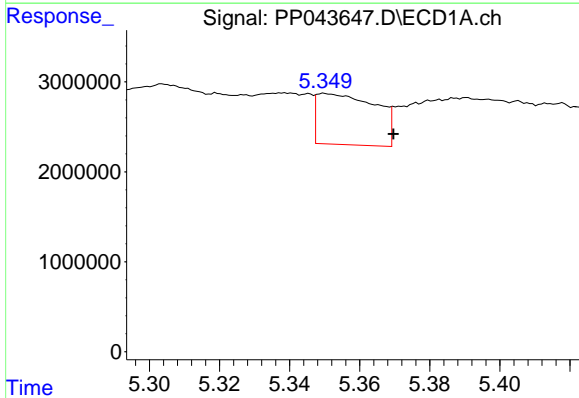
R.T.: 5.259 min
 Delta R.T.: -0.004 min
 Response: 10833505
 Conc: 164.53 ng/ml

Instrument :
 ECD_P
 ClientSampleId :
 SU-02-021022



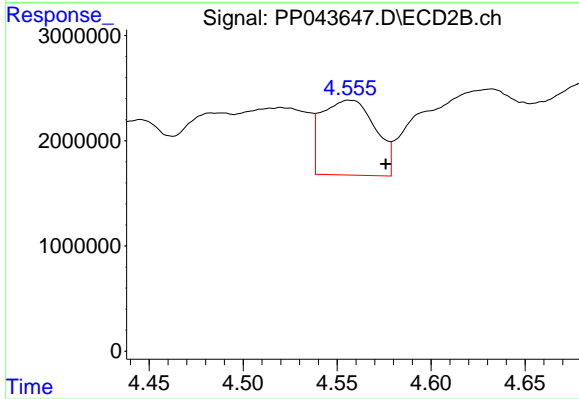
#5 AR-1016-3

R.T.: 4.520 min
 Delta R.T.: -0.007 min
 Response: 15521913
 Conc: 332.25 ng/ml



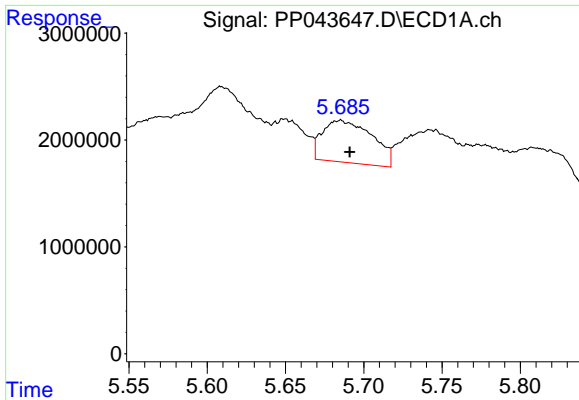
#6 AR-1016-4

R.T.: 5.350 min
 Delta R.T.: -0.020 min
 Response: 6627201
 Conc: 122.20 ng/ml



#6 AR-1016-4

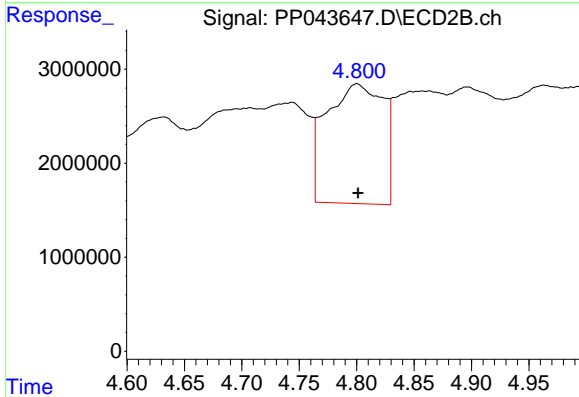
R.T.: 4.556 min
 Delta R.T.: -0.020 min
 Response: 14095905
 Conc: 377.19 ng/ml



#7 AR-1016-5

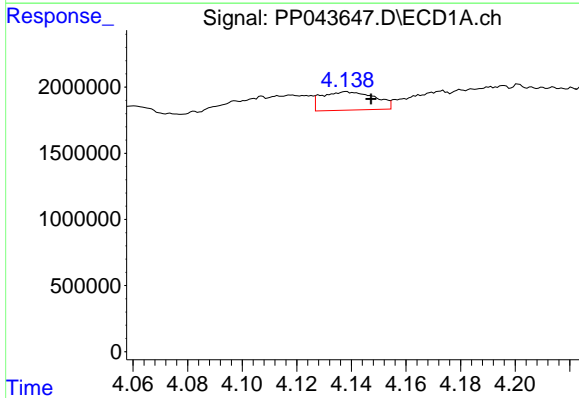
R.T.: 5.685 min
 Delta R.T.: -0.006 min
 Response: 8747782
 Conc: 166.54 ng/ml

Instrument :
 ECD_P
 ClientSampleId :
 SU-02-021022



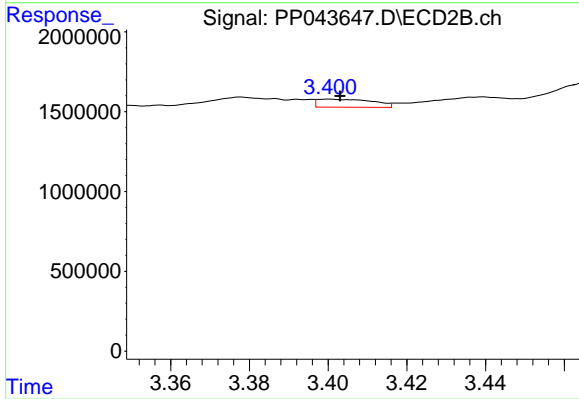
#7 AR-1016-5

R.T.: 4.800 min
 Delta R.T.: 0.000 min
 Response: 43774430
 Conc: 958.23 ng/ml



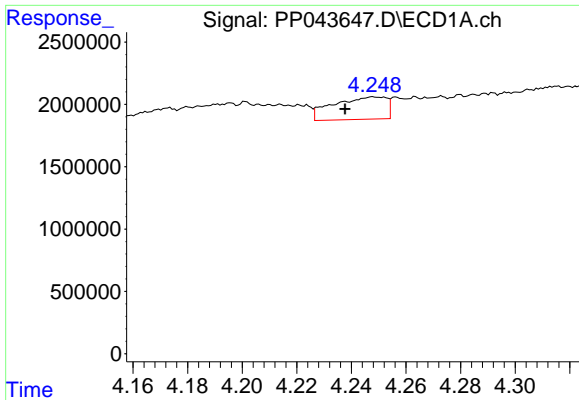
#8 AR-1221-1

R.T.: 4.138 min
 Delta R.T.: -0.009 min
 Response: 1881982
 Conc: 73.92 ng/ml



#8 AR-1221-1

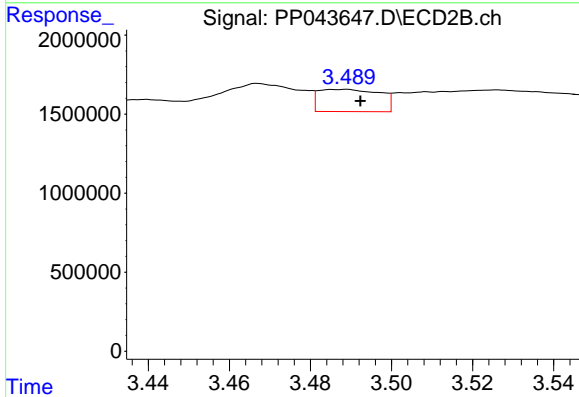
R.T.: 3.400 min
 Delta R.T.: -0.003 min
 Response: 494871
 Conc: 20.75 ng/ml



#9 AR-1221-2

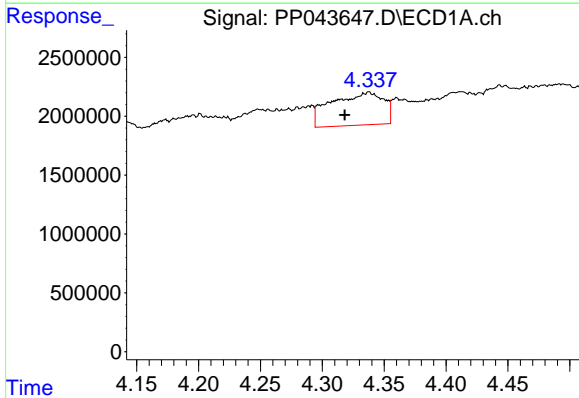
R.T.: 4.248 min
 Delta R.T.: 0.010 min
 Response: 2431090
 Conc: 126.63 ng/ml

Instrument :
 ECD_P
 ClientSampleId :
 SU-02-021022



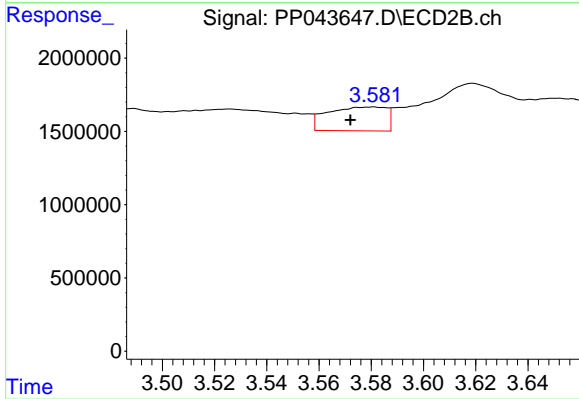
#9 AR-1221-2

R.T.: 3.489 min
 Delta R.T.: -0.003 min
 Response: 1473683
 Conc: 81.60 ng/ml



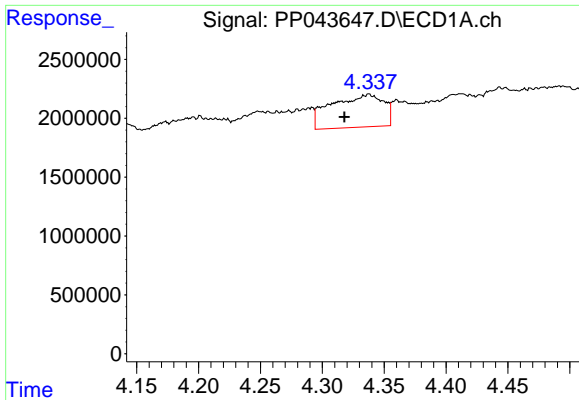
#10 AR-1221-3

R.T.: 4.338 min
 Delta R.T.: 0.020 min
 Response: 8187313
 Conc: 142.52 ng/ml



#10 AR-1221-3

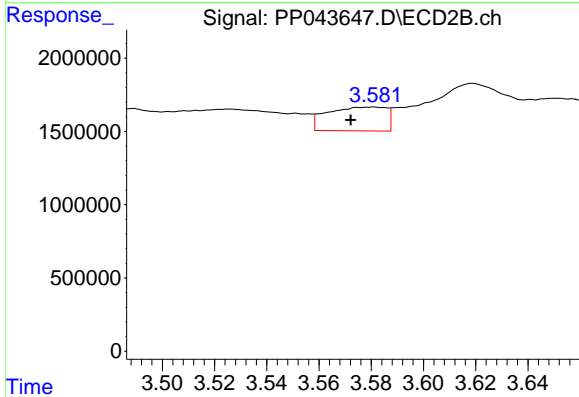
R.T.: 3.581 min
 Delta R.T.: 0.009 min
 Response: 2554557
 Conc: 49.52 ng/ml



#11 AR-1232-1

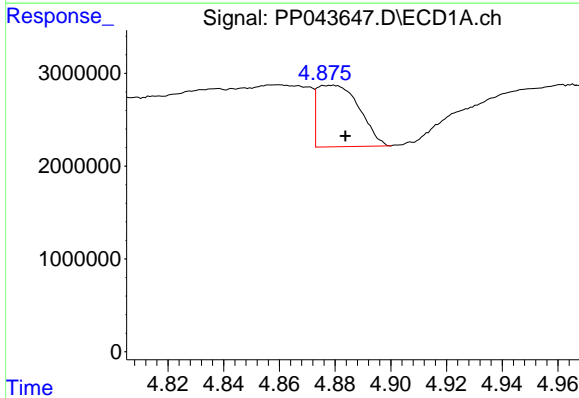
R.T.: 4.338 min
 Delta R.T.: 0.020 min
 Response: 8187313
 Conc: 168.70 ng/ml

Instrument :
 ECD_P
 ClientSampleId :
 SU-02-021022



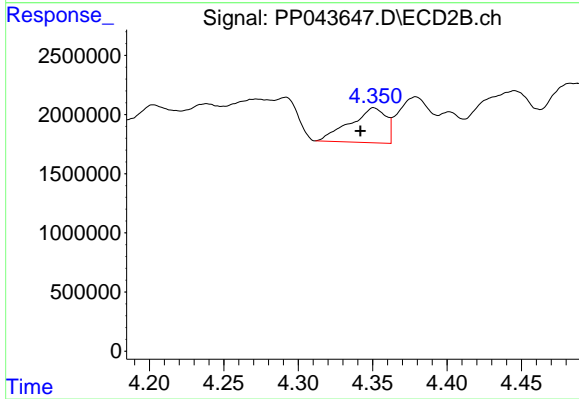
#11 AR-1232-1

R.T.: 3.581 min
 Delta R.T.: 0.009 min
 Response: 2554557
 Conc: 59.37 ng/ml



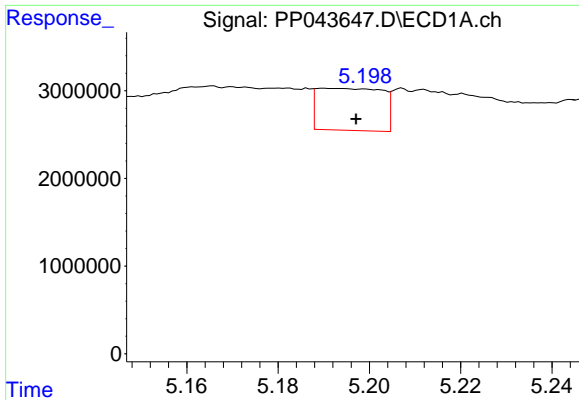
#12 AR-1232-2

R.T.: 4.879 min
 Delta R.T.: -0.005 min
 Response: 6984471
 Conc: 294.74 ng/ml



#12 AR-1232-2

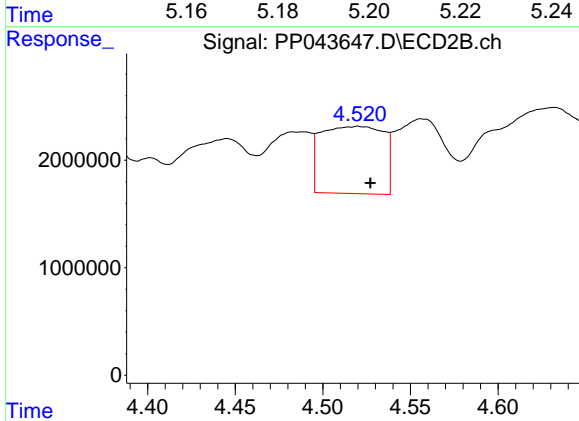
R.T.: 4.351 min
 Delta R.T.: 0.009 min
 Response: 4978216
 Conc: 139.45 ng/ml



#13 AR-1232-3

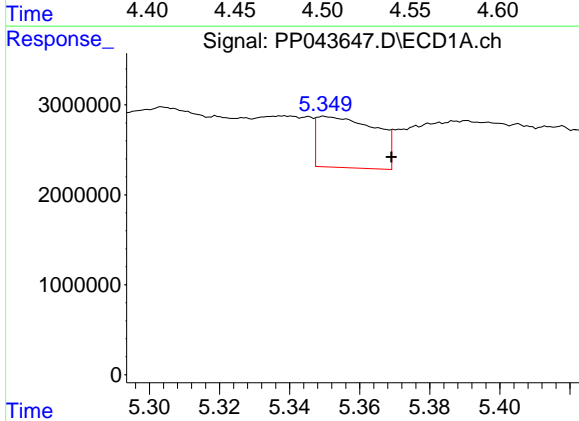
R.T.: 5.190 min
 Delta R.T.: -0.007 min
 Response: 4746323
 Conc: 110.24 ng/ml

Instrument :
 ECD_P
 ClientSampleId :
 SU-02-021022



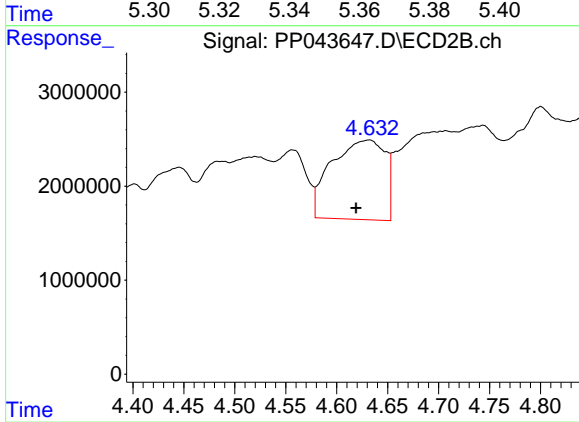
#13 AR-1232-3

R.T.: 4.520 min
 Delta R.T.: -0.007 min
 Response: 15521913
 Conc: 793.79 ng/ml



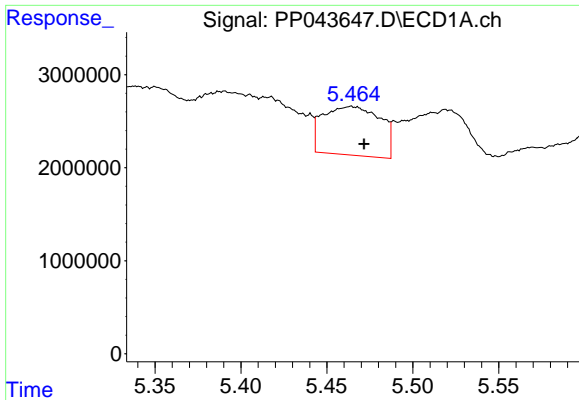
#14 AR-1232-4

R.T.: 5.350 min
 Delta R.T.: -0.019 min
 Response: 6627201
 Conc: 303.61 ng/ml



#14 AR-1232-4

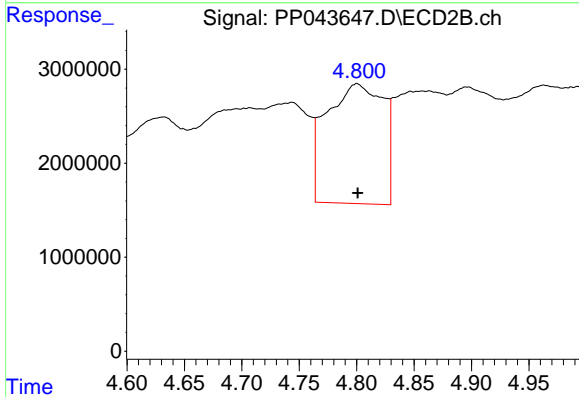
R.T.: 4.632 min
 Delta R.T.: 0.013 min
 Response: 30827987
 Conc: 1782.75 ng/ml



#15 AR-1232-5

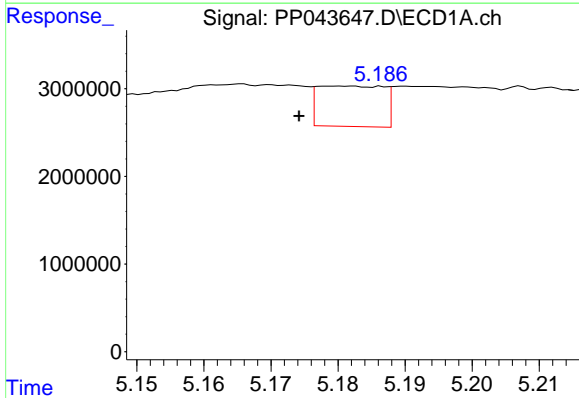
R.T.: 5.464 min
 Delta R.T.: -0.008 min
 Response: 12146648
 Conc: 753.08 ng/ml

Instrument :
 ECD_P
 ClientSampleId :
 SU-02-021022



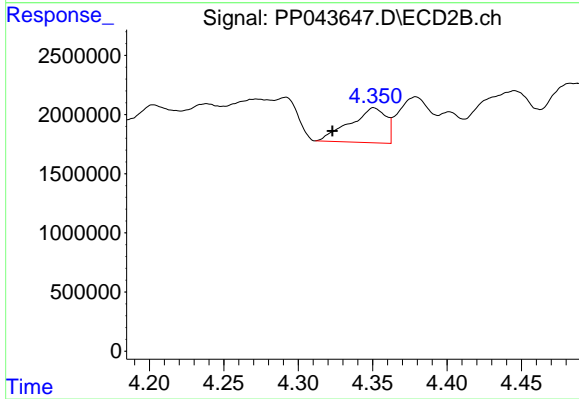
#15 AR-1232-5

R.T.: 4.800 min
 Delta R.T.: 0.000 min
 Response: 43774430
 Conc: 2330.39 ng/ml



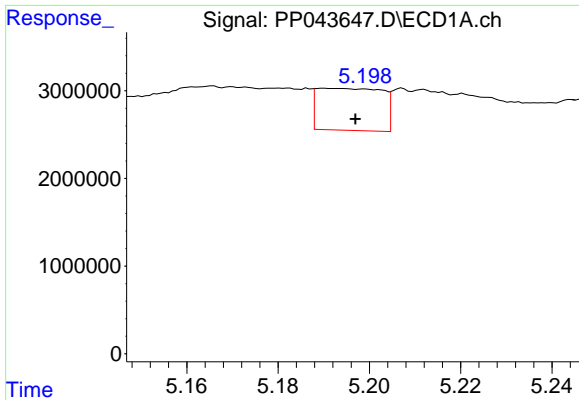
#16 AR-1242-1

R.T.: 5.180 min
 Delta R.T.: 0.006 min
 Response: 3142828
 Conc: 55.93 ng/ml



#16 AR-1242-1

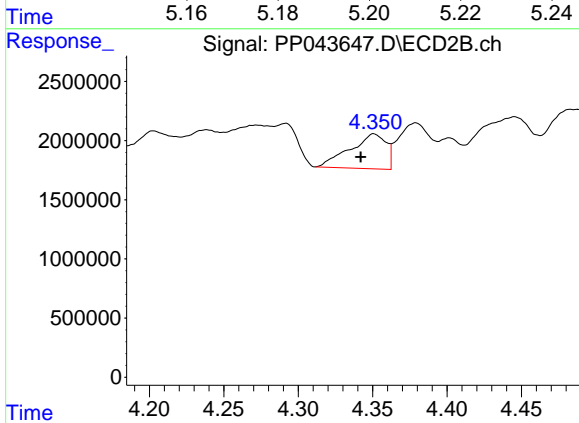
R.T.: 4.351 min
 Delta R.T.: 0.028 min
 Response: 4978216
 Conc: 102.12 ng/ml



#17 AR-1242-2

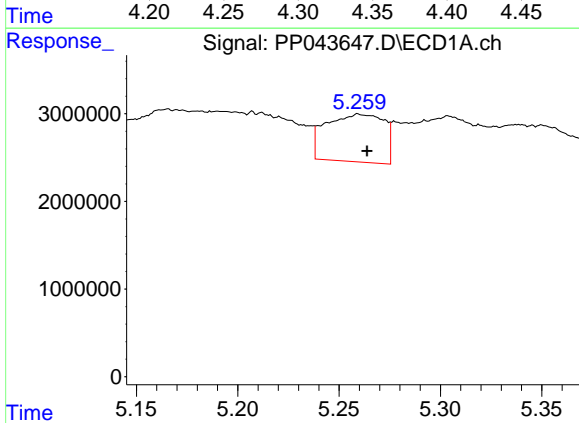
R.T.: 5.190 min
 Delta R.T.: -0.007 min
 Response: 4746323
 Conc: 57.37 ng/ml

Instrument :
 ECD_P
 ClientSampleId :
 SU-02-021022



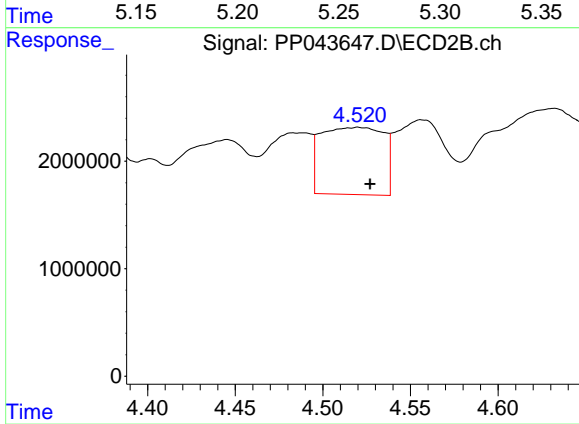
#17 AR-1242-2

R.T.: 4.351 min
 Delta R.T.: 0.009 min
 Response: 4978216
 Conc: 73.93 ng/ml



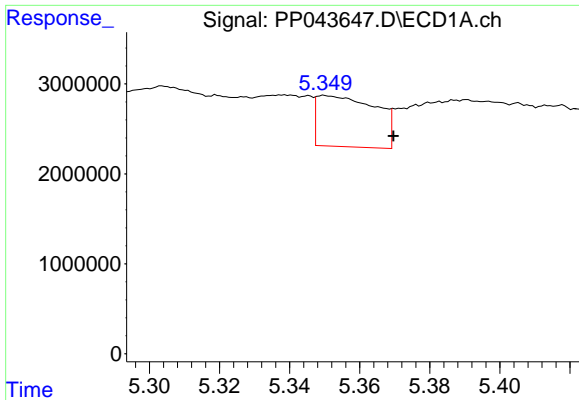
#18 AR-1242-3

R.T.: 5.259 min
 Delta R.T.: -0.004 min
 Response: 10833505
 Conc: 209.30 ng/ml



#18 AR-1242-3

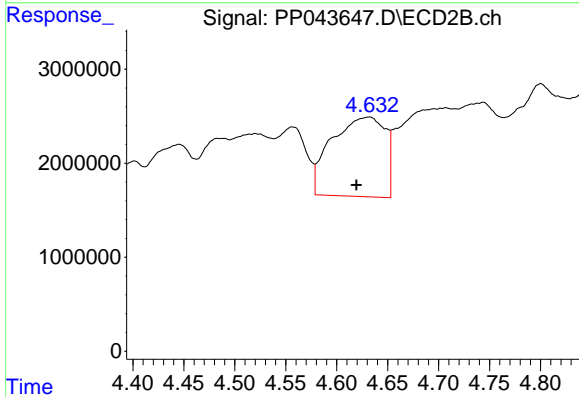
R.T.: 4.520 min
 Delta R.T.: -0.007 min
 Response: 15521913
 Conc: 413.49 ng/ml



#19 AR-1242-4

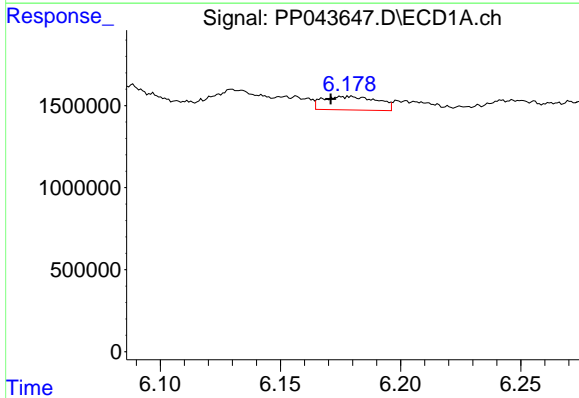
R.T.: 5.350 min
 Delta R.T.: -0.020 min
 Response: 6627201
 Conc: 155.16 ng/ml

Instrument :
 ECD_P
 ClientSampleId :
 SU-02-021022



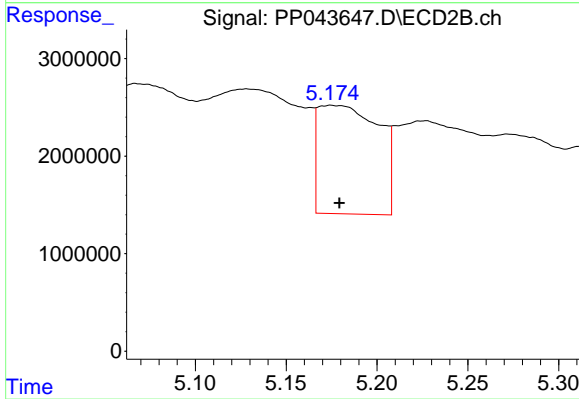
#19 AR-1242-4

R.T.: 4.632 min
 Delta R.T.: 0.013 min
 Response: 30827987
 Conc: 853.74 ng/ml



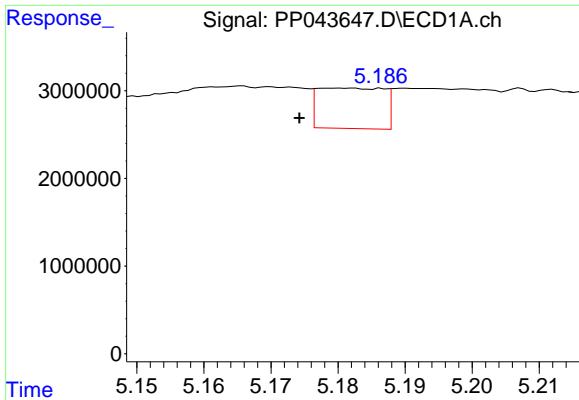
#20 AR-1242-5

R.T.: 6.175 min
 Delta R.T.: 0.004 min
 Response: 1302225
 Conc: 30.16 ng/ml



#20 AR-1242-5

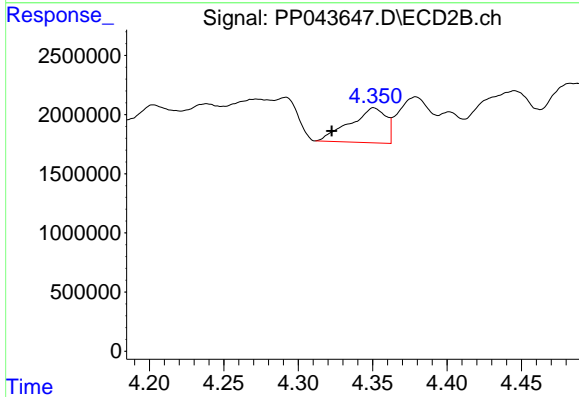
R.T.: 5.175 min
 Delta R.T.: -0.004 min
 Response: 25754103
 Conc: 598.27 ng/ml



#21 AR-1248-1

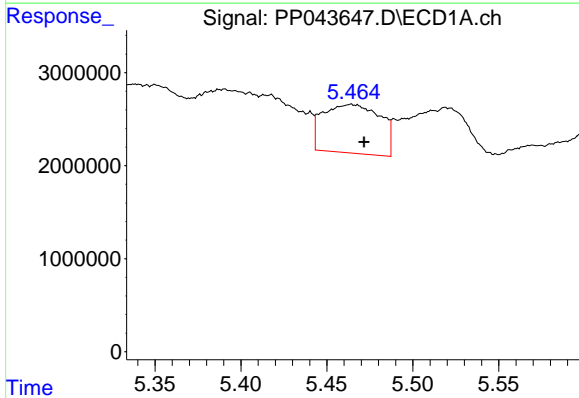
R.T.: 5.180 min
 Delta R.T.: 0.006 min
 Response: 3142828
 Conc: 76.66 ng/ml

Instrument :
 ECD_P
 ClientSampleId :
 SU-02-021022



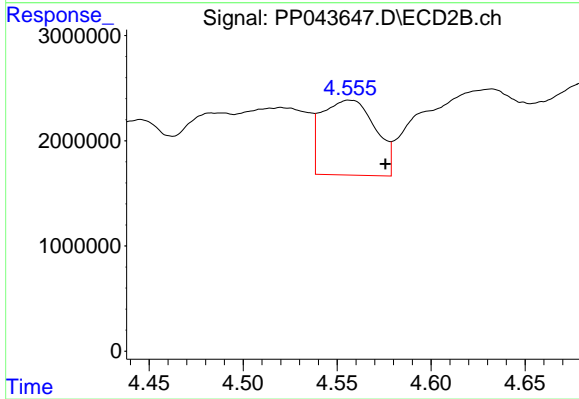
#21 AR-1248-1

R.T.: 4.351 min
 Delta R.T.: 0.028 min
 Response: 4978216
 Conc: 133.64 ng/ml



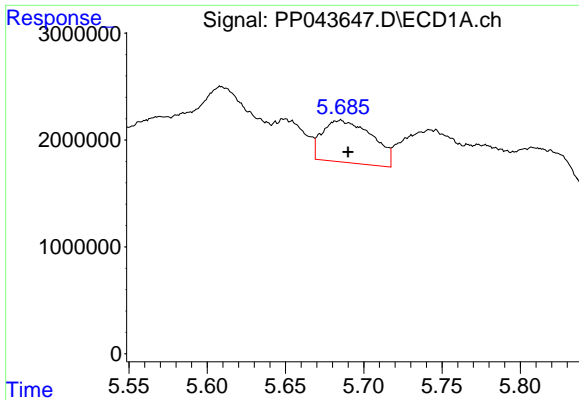
#22 AR-1248-2

R.T.: 5.464 min
 Delta R.T.: -0.007 min
 Response: 12146648
 Conc: 213.80 ng/ml



#22 AR-1248-2

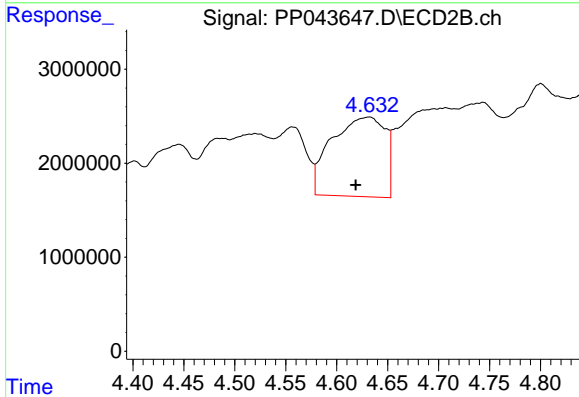
R.T.: 4.556 min
 Delta R.T.: -0.020 min
 Response: 14095905
 Conc: 288.13 ng/ml



#23 AR-1248-3

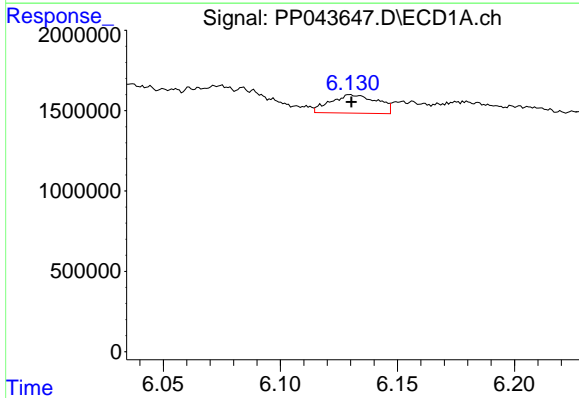
R.T.: 5.685 min
 Delta R.T.: -0.004 min
 Response: 8747782
 Conc: 131.12 ng/ml

Instrument :
 ECD_P
 ClientSampleId :
 SU-02-021022



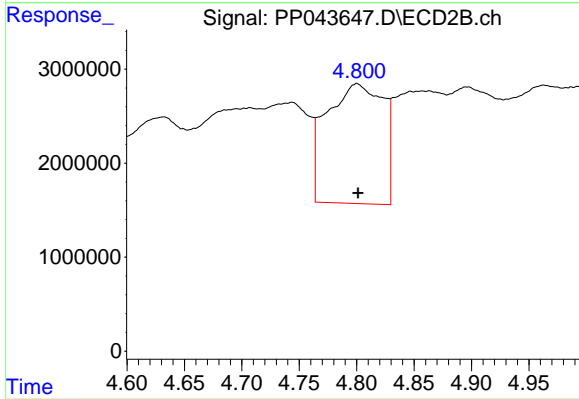
#23 AR-1248-3

R.T.: 4.632 min
 Delta R.T.: 0.013 min
 Response: 30827987
 Conc: 600.76 ng/ml



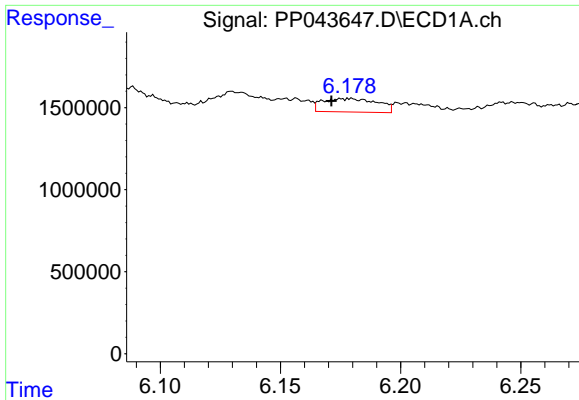
#24 AR-1248-4

R.T.: 6.130 min
 Delta R.T.: 0.000 min
 Response: 1580955
 Conc: 22.63 ng/ml



#24 AR-1248-4

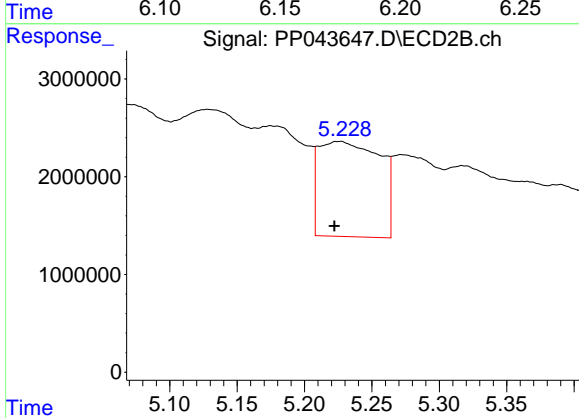
R.T.: 4.800 min
 Delta R.T.: 0.000 min
 Response: 43774430
 Conc: 746.67 ng/ml



#25 AR-1248-5

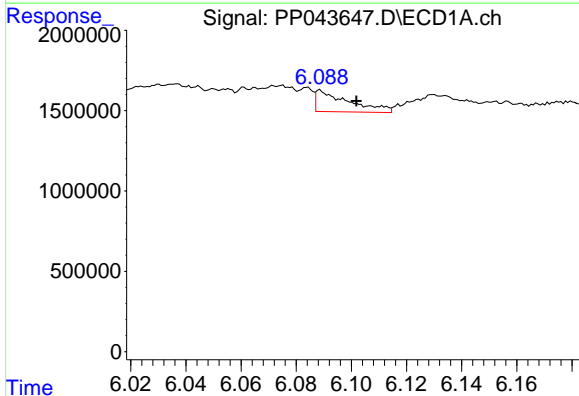
R.T.: 6.175 min
 Delta R.T.: 0.004 min
 Response: 1302225
 Conc: 18.84 ng/ml

Instrument :
 ECD_P
 ClientSampleId :
 SU-02-021022



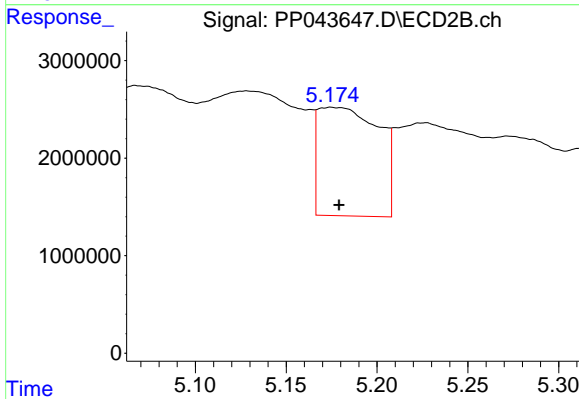
#25 AR-1248-5

R.T.: 5.226 min
 Delta R.T.: 0.004 min
 Response: 30654838
 Conc: 535.01 ng/ml



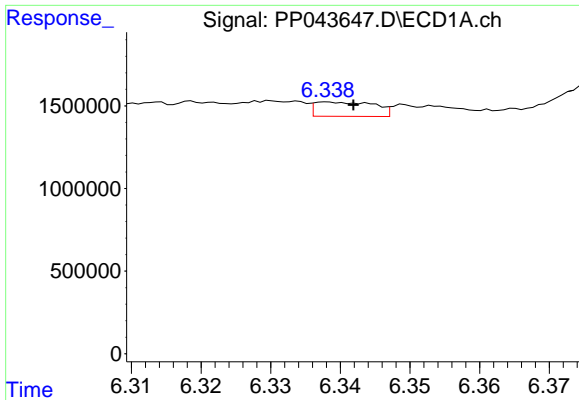
#26 AR-1254-1

R.T.: 6.089 min
 Delta R.T.: -0.013 min
 Response: 1106802
 Conc: 14.65 ng/ml



#26 AR-1254-1

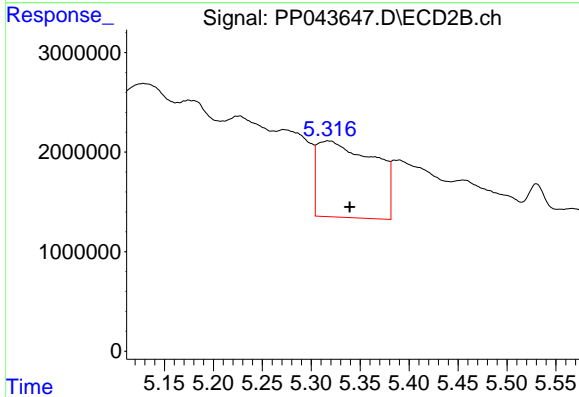
R.T.: 5.175 min
 Delta R.T.: -0.004 min
 Response: 25754103
 Conc: 294.90 ng/ml



#27 AR-1254-2

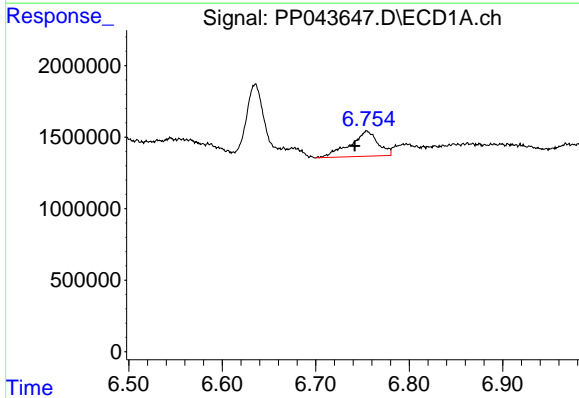
R.T.: 6.338 min
 Delta R.T.: -0.004 min
 Response: 516704
 Conc: 4.61 ng/ml

Instrument :
 ECD_P
 ClientSampleId :
 SU-02-021022



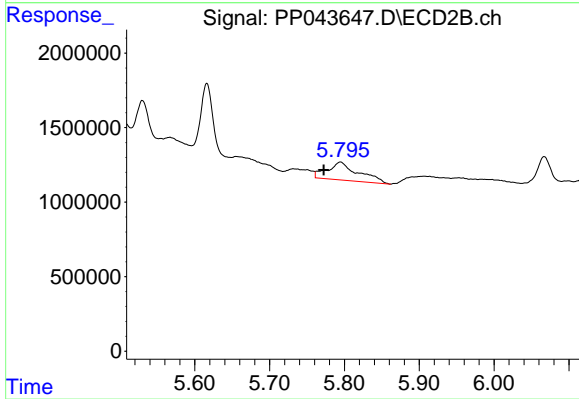
#27 AR-1254-2

R.T.: 5.317 min
 Delta R.T.: -0.022 min
 Response: 30996704
 Conc: 406.37 ng/ml



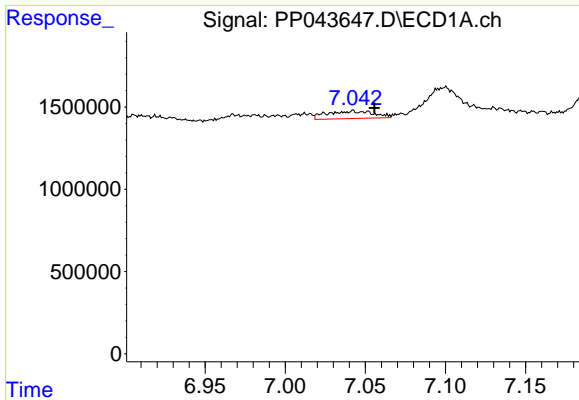
#28 AR-1254-3

R.T.: 6.755 min
 Delta R.T.: 0.013 min
 Response: 3652972
 Conc: 31.57 ng/ml



#28 AR-1254-3

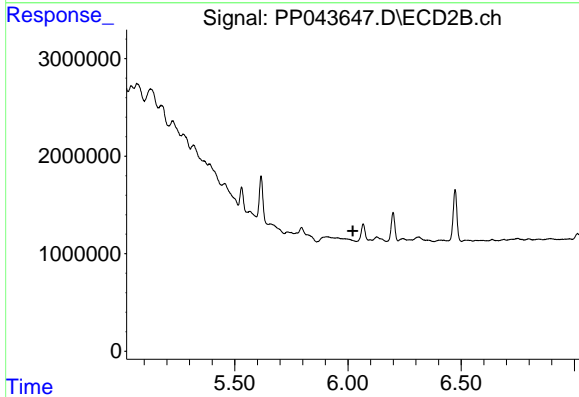
R.T.: 5.795 min
 Delta R.T.: 0.022 min
 Response: 3460884
 Conc: 28.24 ng/ml



#29 AR-1254-4

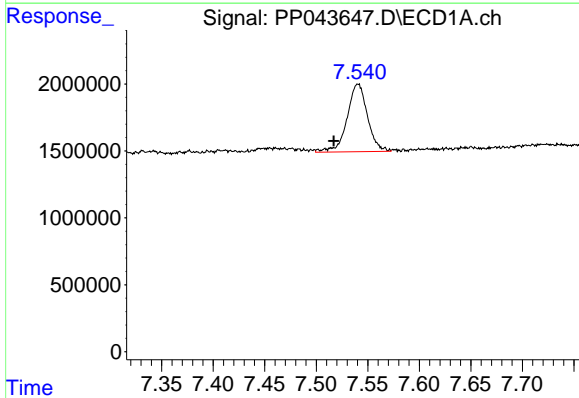
R.T.: 7.042 min
 Delta R.T.: -0.013 min
 Response: 906485
 Conc: 11.35 ng/ml

Instrument :
 ECD_P
 ClientSampleId :
 SU-02-021022



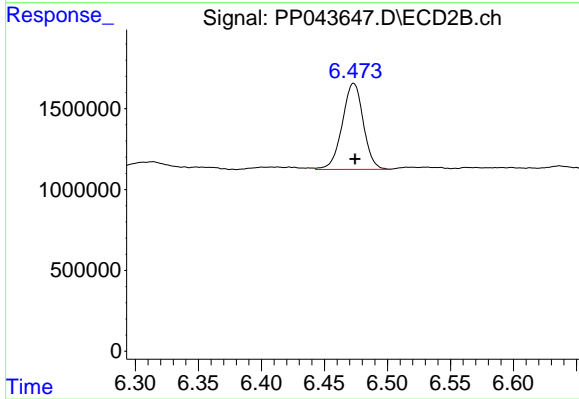
#29 AR-1254-4

R.T.: 0.000 min
 Exp R.T. : 6.021 min
 Response: 0
 Conc: N.D.



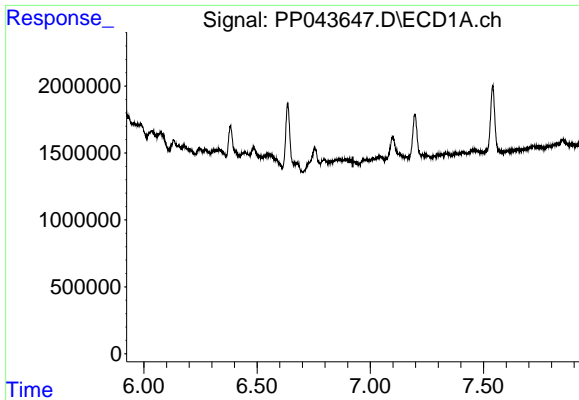
#30 AR-1254-5

R.T.: 7.540 min
 Delta R.T.: 0.024 min
 Response: 6943582
 Conc: 80.96 ng/ml



#30 AR-1254-5

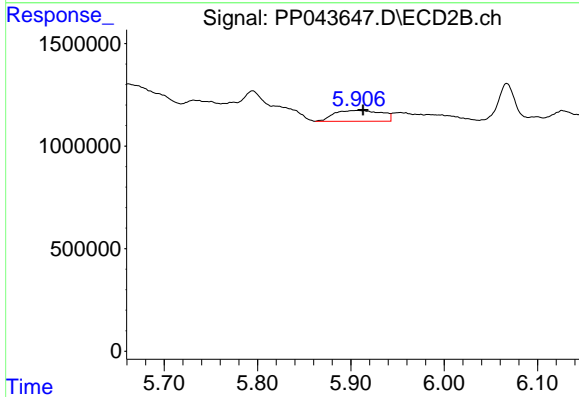
R.T.: 6.473 min
 Delta R.T.: 0.000 min
 Response: 6190759
 Conc: 53.53 ng/ml



#31 AR-1260-1

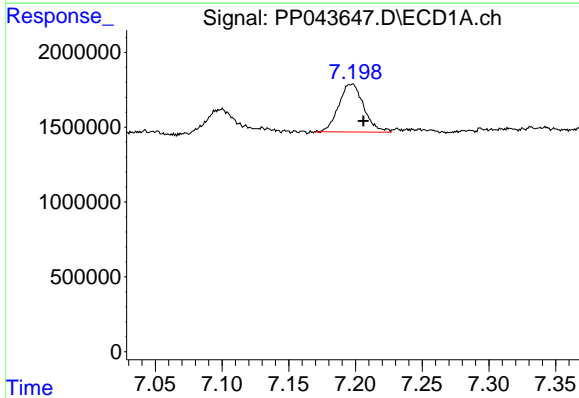
R.T.: 0.000 min
 Exp R.T.: 6.923 min
 Response: 0
 Conc: N.D.

Instrument :
 ECD_P
 ClientSampleId :
 SU-02-021022



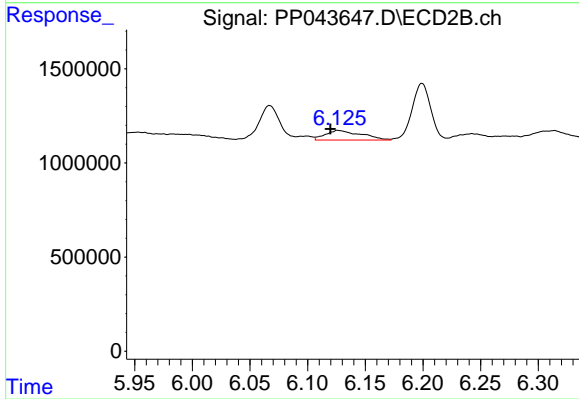
#31 AR-1260-1

R.T.: 5.907 min
 Delta R.T.: -0.006 min
 Response: 1869482
 Conc: 23.38 ng/ml



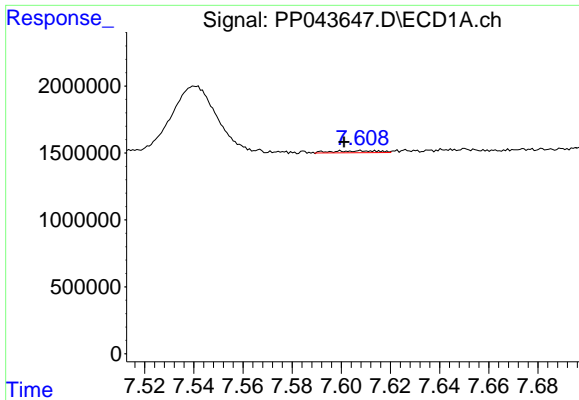
#32 AR-1260-2

R.T.: 7.197 min
 Delta R.T.: -0.009 min
 Response: 4182598
 Conc: 46.21 ng/ml



#32 AR-1260-2

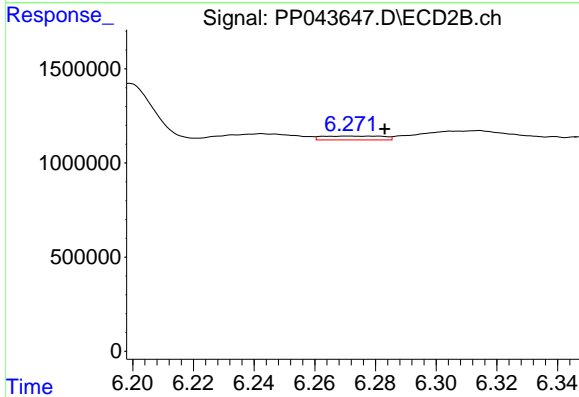
R.T.: 6.127 min
 Delta R.T.: 0.007 min
 Response: 1092957
 Conc: 11.19 ng/ml



#33 AR-1260-3

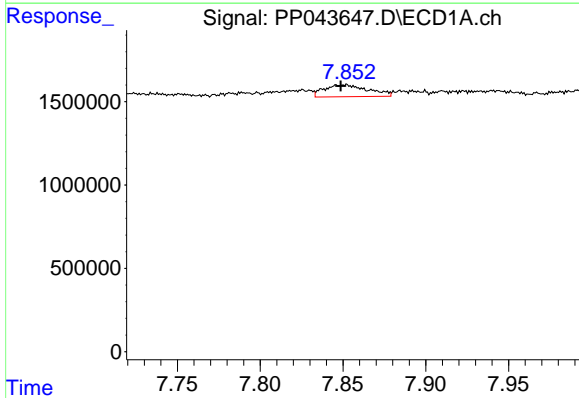
R.T.: 7.608 min
 Delta R.T.: 0.007 min
 Response: 184363
 Conc: 2.54 ng/ml

Instrument :
 ECD_P
 ClientSampleId :
 SU-02-021022



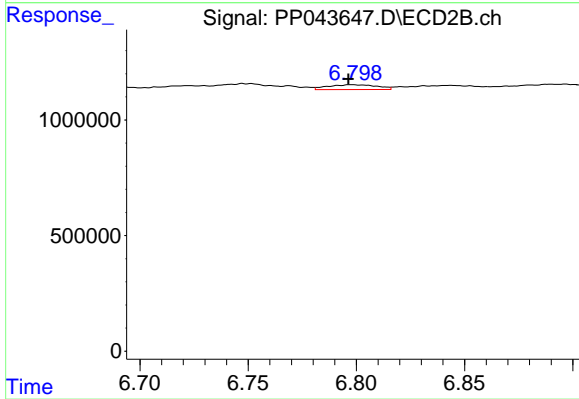
#33 AR-1260-3

R.T.: 6.271 min
 Delta R.T.: -0.012 min
 Response: 288418
 Conc: 3.16 ng/ml



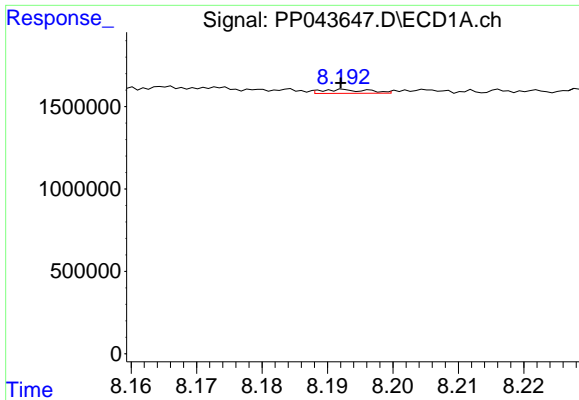
#34 AR-1260-4

R.T.: 7.852 min
 Delta R.T.: 0.003 min
 Response: 1312210
 Conc: 15.28 ng/ml



#34 AR-1260-4

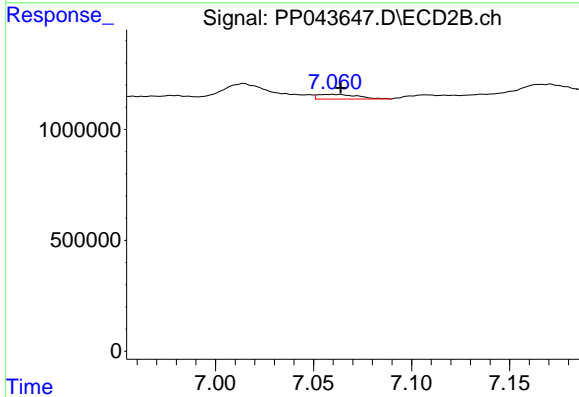
R.T.: 6.798 min
 Delta R.T.: 0.002 min
 Response: 327432
 Conc: 4.05 ng/ml



#35 AR-1260-5

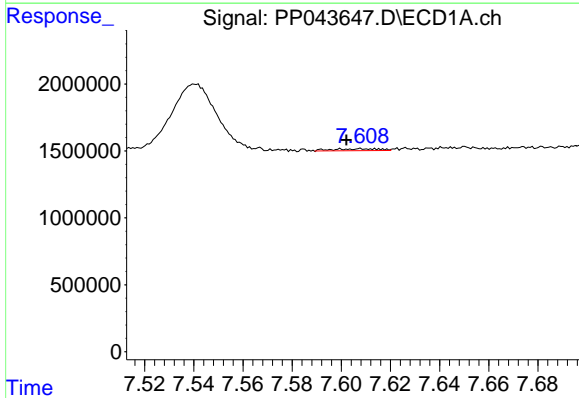
R.T.: 8.192 min
 Delta R.T.: 0.000 min
 Response: 115801
 Conc: 0.75 ng/ml

Instrument : ECD_P
 ClientSampleId : SU-02-021022



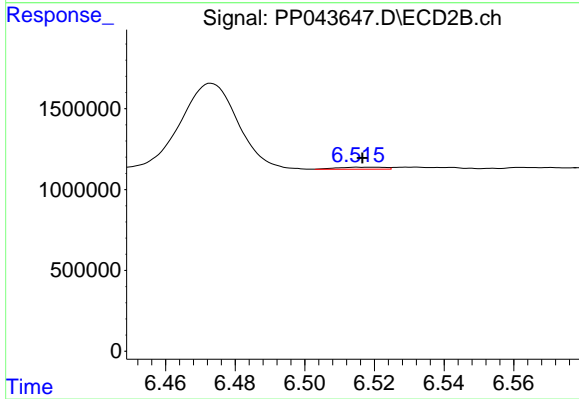
#35 AR-1260-5

R.T.: 7.060 min
 Delta R.T.: -0.004 min
 Response: 295578
 Conc: 1.60 ng/ml



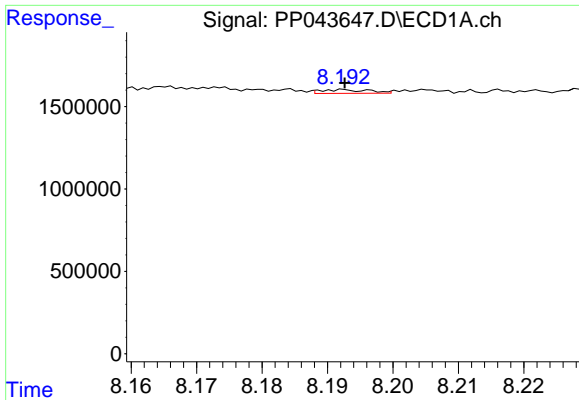
#36 AR-1262-1

R.T.: 7.608 min
 Delta R.T.: 0.006 min
 Response: 184363
 Conc: 1.87 ng/ml



#36 AR-1262-1

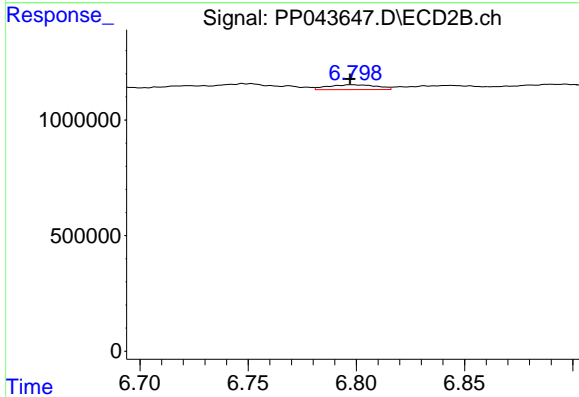
R.T.: 6.519 min
 Delta R.T.: 0.003 min
 Response: 119180
 Conc: 1.08 ng/ml



#37 AR-1262-2

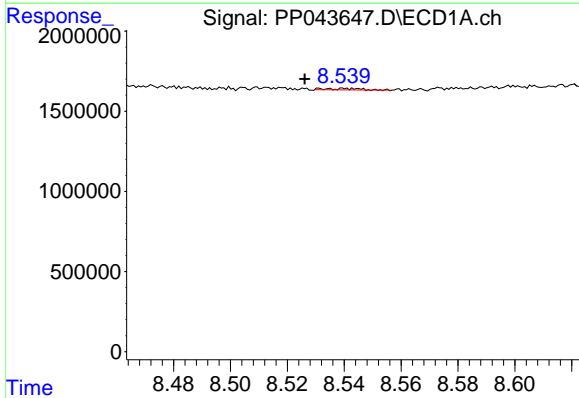
R.T.: 8.192 min
 Delta R.T.: 0.000 min
 Response: 115801
 Conc: 0.72 ng/ml

Instrument :
 ECD_P
 ClientSampleId :
 SU-02-021022



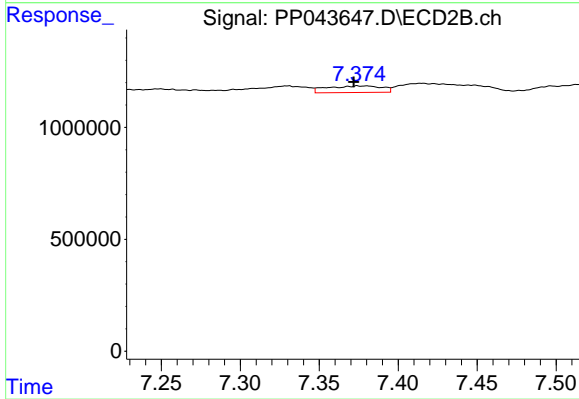
#37 AR-1262-2

R.T.: 6.798 min
 Delta R.T.: 0.000 min
 Response: 327432
 Conc: 3.21 ng/ml



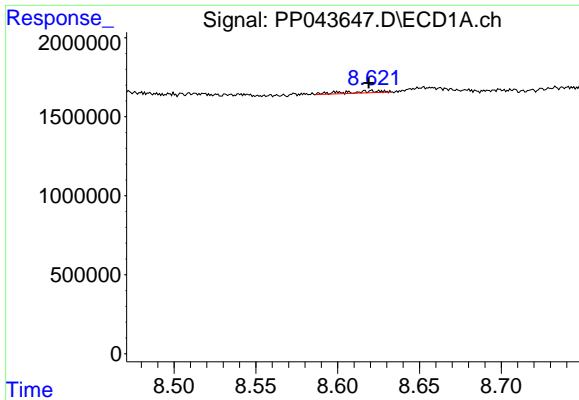
#38 AR-1262-3

R.T.: 8.541 min
 Delta R.T.: 0.015 min
 Response: 74580
 Conc: 0.68 ng/ml



#38 AR-1262-3

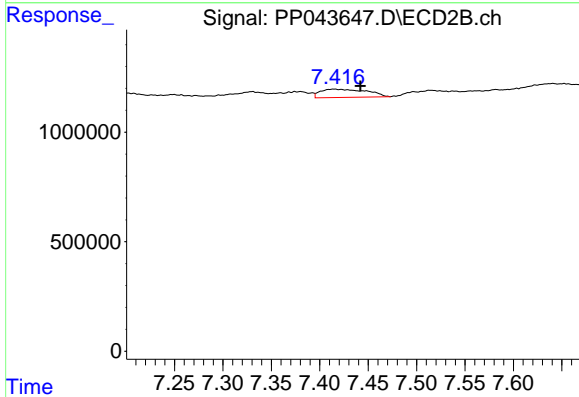
R.T.: 7.380 min
 Delta R.T.: 0.008 min
 Response: 717388
 Conc: 8.42 ng/ml



#39 AR-1262-4

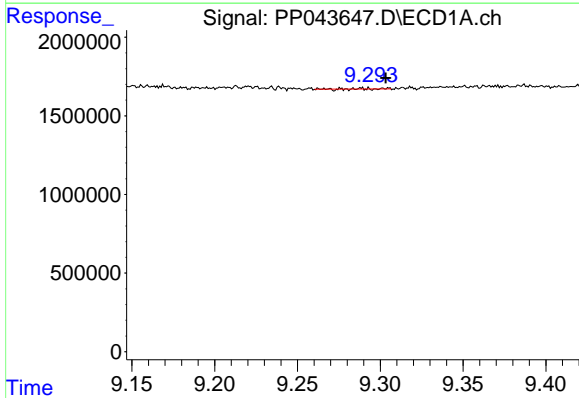
R.T.: 8.621 min
 Delta R.T.: 0.002 min
 Response: 198153
 Conc: 4.13 ng/ml

Instrument :
 ECD_P
 ClientSampleId :
 SU-02-021022



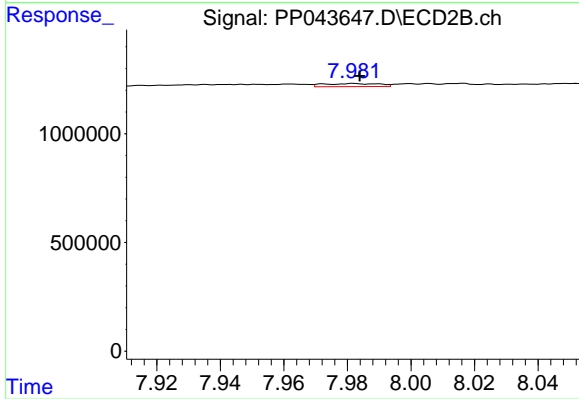
#39 AR-1262-4

R.T.: 7.415 min
 Delta R.T.: -0.027 min
 Response: 1248841
 Conc: 8.04 ng/ml



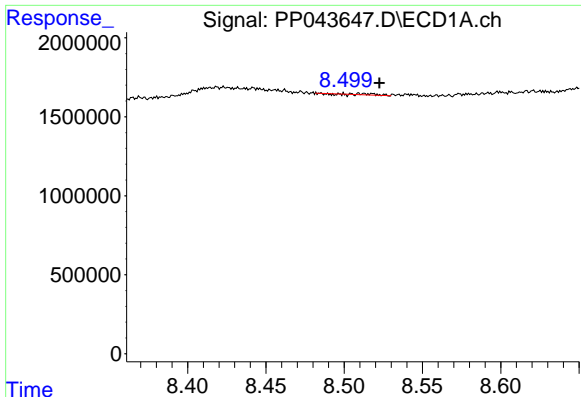
#40 AR-1262-5

R.T.: 9.288 min
 Delta R.T.: -0.015 min
 Response: 18233
 Conc: 0.33 ng/ml



#40 AR-1262-5

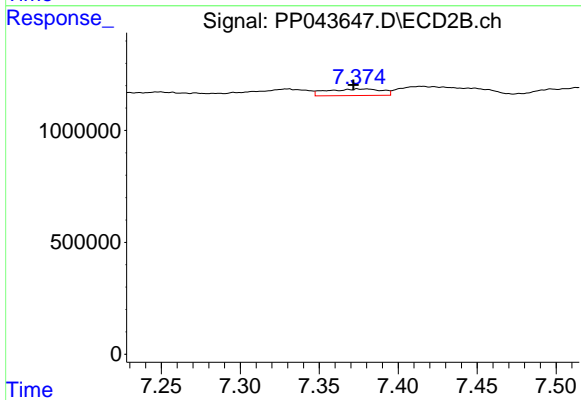
R.T.: 7.982 min
 Delta R.T.: -0.002 min
 Response: 171302
 Conc: 2.20 ng/ml



#41 AR-1268-1

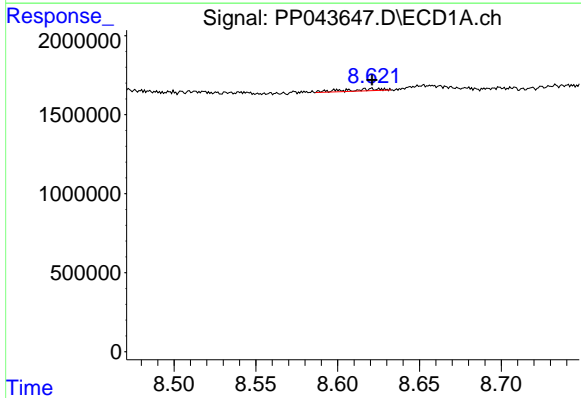
R.T.: 8.505 min
 Delta R.T.: -0.018 min
 Response: 36560
 Conc: 0.19 ng/ml

Instrument :
 ECD_P
 ClientSampleId :
 SU-02-021022



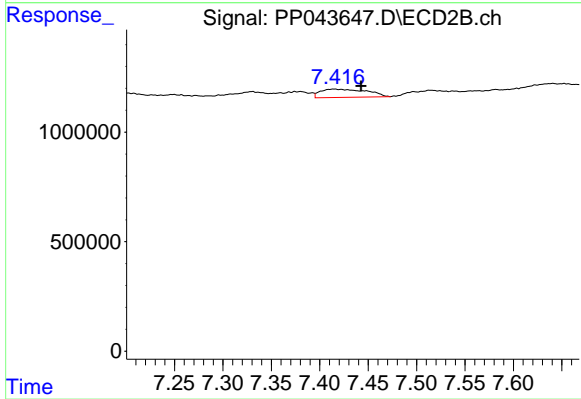
#41 AR-1268-1

R.T.: 7.380 min
 Delta R.T.: 0.009 min
 Response: 717388
 Conc: 2.83 ng/ml



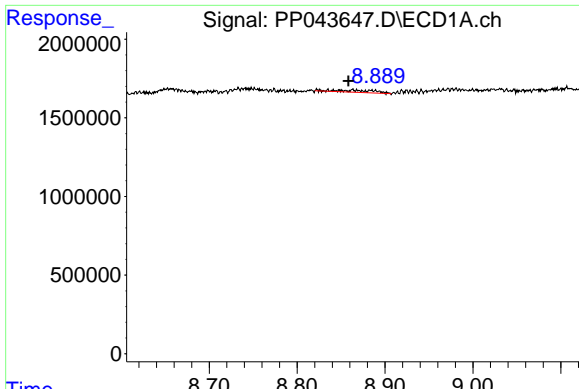
#42 AR-1268-2

R.T.: 8.621 min
 Delta R.T.: 0.000 min
 Response: 198153
 Conc: 1.13 ng/ml



#42 AR-1268-2

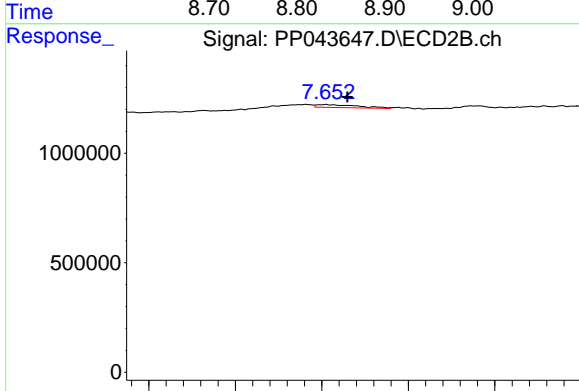
R.T.: 7.415 min
 Delta R.T.: -0.027 min
 Response: 1248841
 Conc: 5.53 ng/ml



#43 AR-1268-3

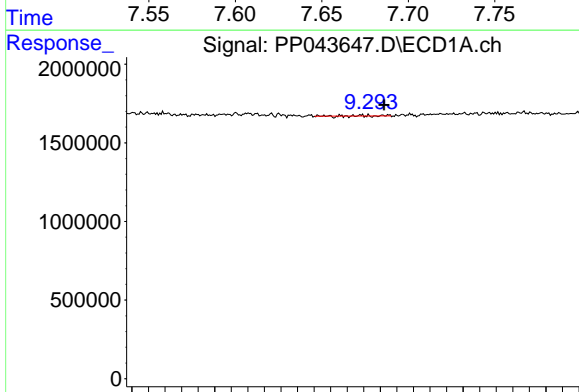
R.T.: 8.865 min
 Delta R.T.: 0.006 min
 Response: 417772
 Conc: 2.71 ng/ml

Instrument :
 ECD_P
 ClientSampleId :
 SU-02-021022



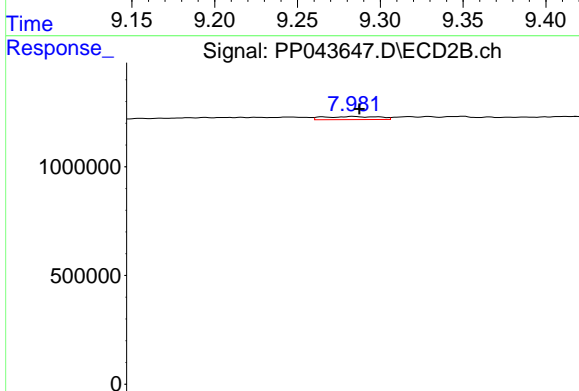
#43 AR-1268-3

R.T.: 7.652 min
 Delta R.T.: -0.012 min
 Response: 219983
 Conc: 1.13 ng/ml



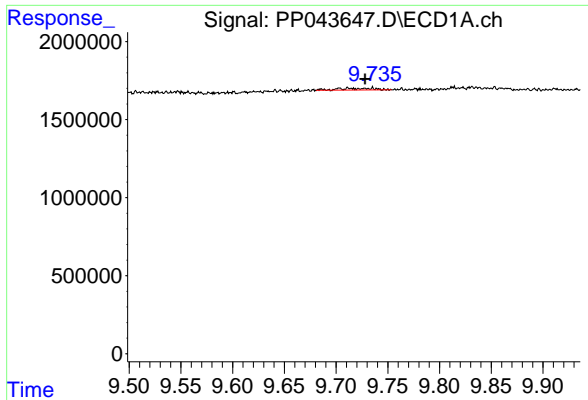
#44 AR-1268-4

R.T.: 9.288 min
 Delta R.T.: -0.015 min
 Response: 18233
 Conc: 0.29 ng/ml



#44 AR-1268-4

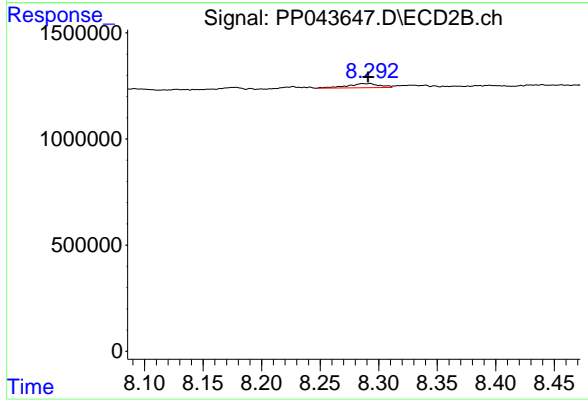
R.T.: 7.982 min
 Delta R.T.: -0.002 min
 Response: 171302
 Conc: 1.90 ng/ml



#45 AR-1268-5

R.T.: 9.704 min
 Delta R.T.: -0.024 min
 Response: 257438
 Conc: 0.57 ng/ml

Instrument :
 ECD_P
 ClientSampleId :
 SU-02-021022



#45 AR-1268-5

R.T.: 8.292 min
 Delta R.T.: 0.001 min
 Response: 380249
 Conc: 0.63 ng/ml