

Data Path : Z:\pestpcbsrv\HPCHEM1\ECD_P\Data\PP021125\
 Data File : PP069654.D
 Signal(s) : Signal #1: ECD1A.ch Signal #2: ECD2B.ch
 Acq On : 11 Feb 2025 09:45
 Operator : YP\AJ
 Sample : AR1248CCC500
 Misc :
 ALS Vial : 5 Sample Multiplier: 1

Instrument :
 ECD_P
ClientSampleId :
 AR1248CCC500

Manual Integrations
APPROVED
 Reviewed By :Yogesh Patel 02/12/2025
 Supervised By :Ankita Jodhani 02/12/2025

Integration File signal 1: autoint1.e
 Integration File signal 2: autoint2.e
 Quant Time: Feb 12 01:24:28 2025
 Quant Method : Z:\pestpcbsrv\HPCHEM1\ECD_P\methods\PP012825.M
 Quant Title : GC EXTRACTABLES
 QLast Update : Wed Jan 29 00:13:21 2025
 Response via : Initial Calibration
 Integrator: ChemStation

Volume Inj. : 2 µl
 Signal #1 Phase : ZB-MR1 Signal #2 Phase: ZB-MR2
 Signal #1 Info : 30Mx0.32mmx 0.50µ Signal #2 Info : 30M x 0.32mm x 0.25µm

Compound	RT#1	RT#2	Resp#1	Resp#2	ng/ml	ng/ml

System Monitoring Compounds						
1) SA Tetrachlo...	4.531	3.836	77077132	48825797	53.844	54.704
2) SA Decachlor...	10.259	8.894	56569619	56759748	51.761	50.747
Target Compounds						
21) L5 AR-1248-1	5.683	4.926	16131933	11480635	497.300	521.597
22) L5 AR-1248-2	5.955	5.165	21968648	14968618	517.562	497.882
23) L5 AR-1248-3	6.157	5.207	23848746	15813733	507.559	510.379
24) L5 AR-1248-4	6.556	5.379	29046322	18387692	526.953	497.722m
25) L5 AR-1248-5	6.595	5.774	27738382	19300393	519.603	516.199

(f)=RT Delta > 1/2 Window (#)=Amounts differ by > 25% (m)=manual int.

Data Path : Z:\pestpcbsrv\HPCHEM1\ECD_P\Data\PP021125\
 Data File : PP069654.D
 Signal(s) : Signal #1: ECD1A.ch Signal #2: ECD2B.ch
 Acq On : 11 Feb 2025 09:45
 Operator : YP\AJ
 Sample : AR1248CCC500
 Misc :
 ALS Vial : 5 Sample Multiplier: 1

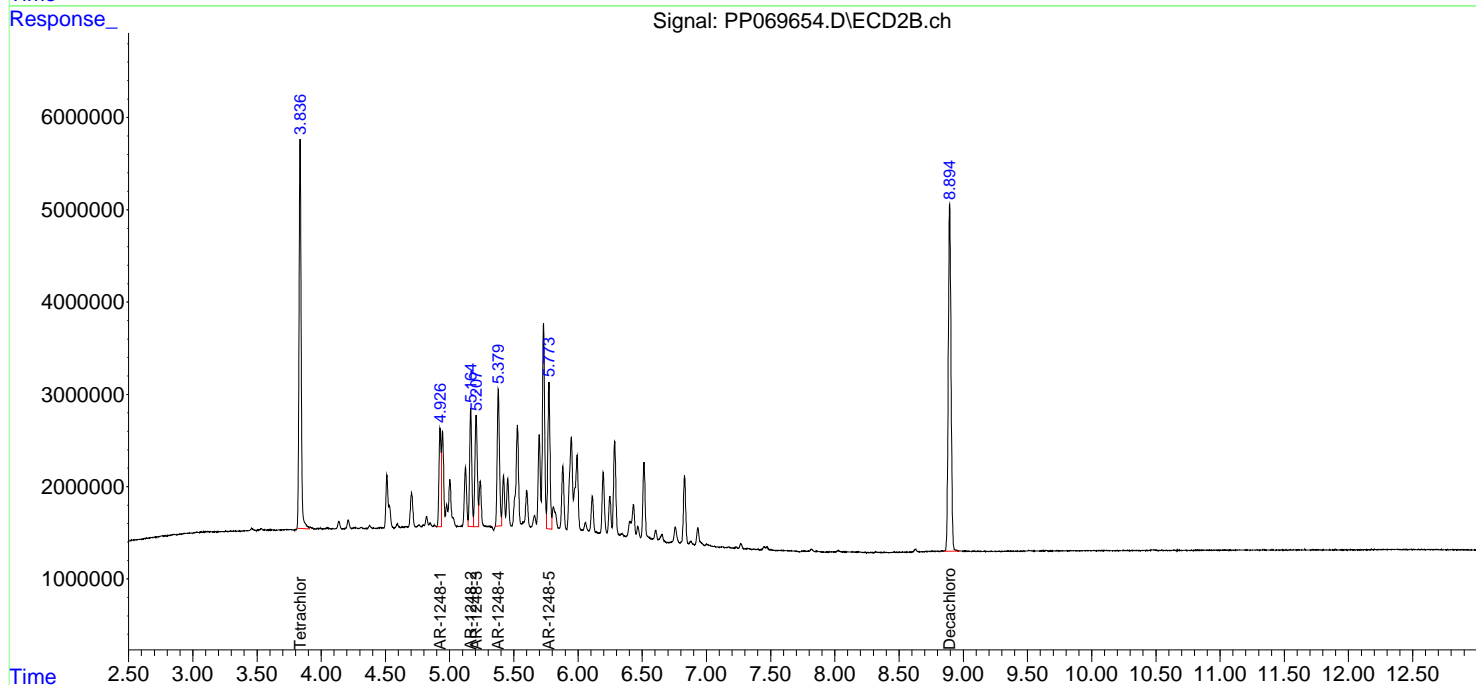
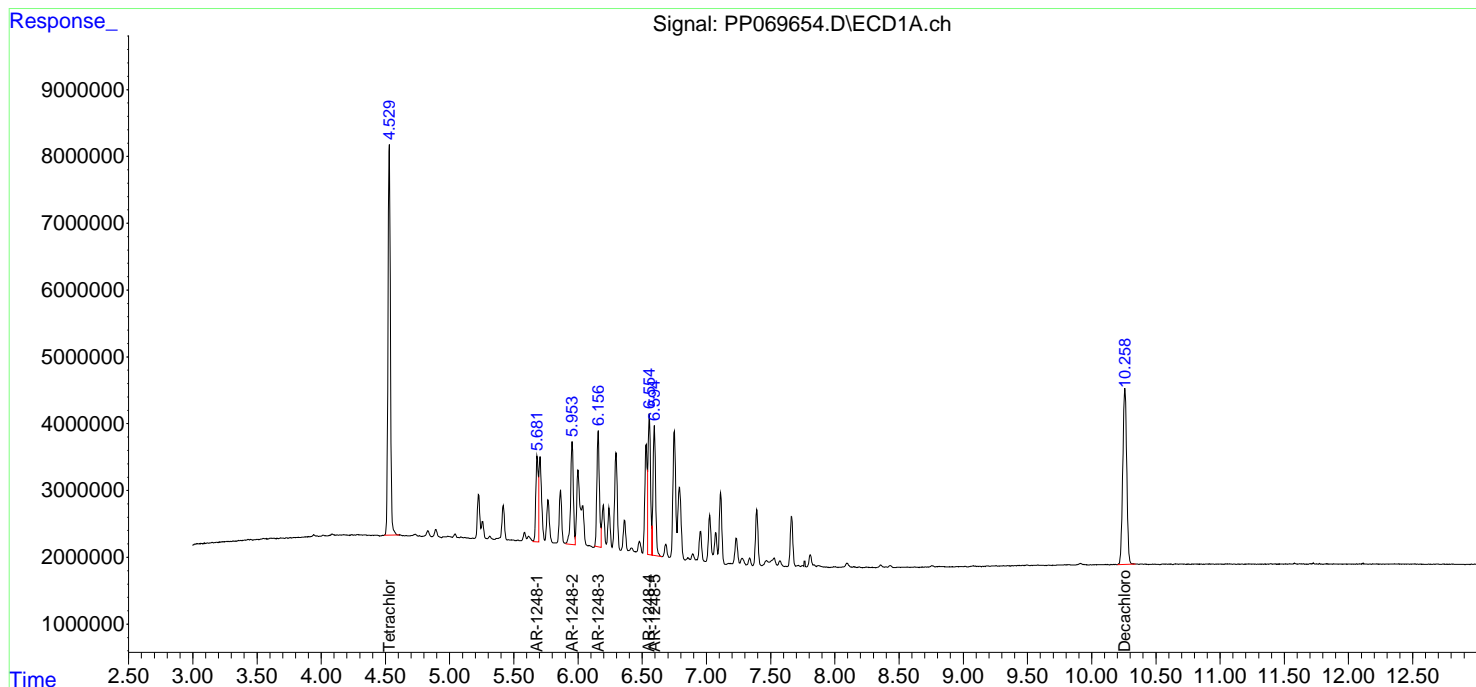
Instrument :
 ECD_P
ClientSampleId :
 AR1248CCC500

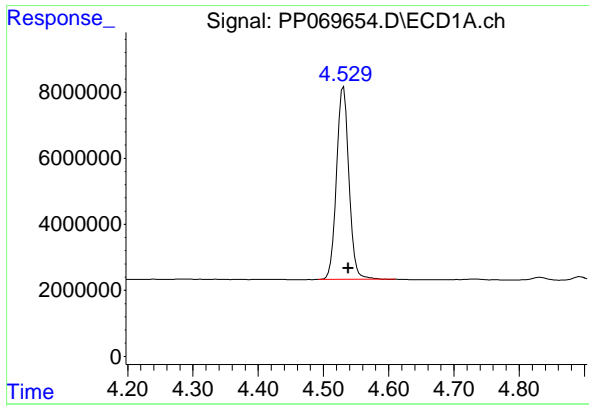
Manual Integrations
APPROVED

Reviewed By :Yogesh Patel 02/12/2025
 Supervised By :Ankita Jodhani 02/12/2025

Integration File signal 1: autoint1.e
 Integration File signal 2: autoint2.e
 Quant Time: Feb 12 01:24:28 2025
 Quant Method : Z:\pestpcbsrv\HPCHEM1\ECD_P\methods\PP012825.M
 Quant Title : GC EXTRACTABLES
 QLast Update : Wed Jan 29 00:13:21 2025
 Response via : Initial Calibration
 Integrator: ChemStation

Volume Inj. : 2 µl
 Signal #1 Phase : ZB-MR1 Signal #2 Phase: ZB-MR2
 Signal #1 Info : 30Mx0.32mmx 0.50µm Signal #2 Info : 30M x 0.32mm x 0.25µm





#1 Tetrachloro-m-xylene

R.T.: 4.531 min
 Delta R.T.: -0.007 min
 Response: 77077132
 Conc: 53.84 ng/ml

Instrument :

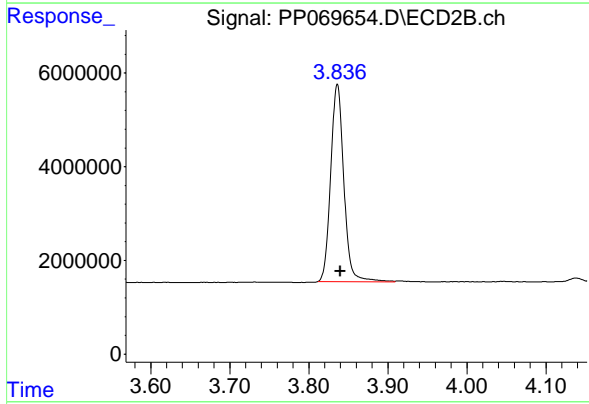
ECD_P

Client Sample Id :

AR1248CCC500

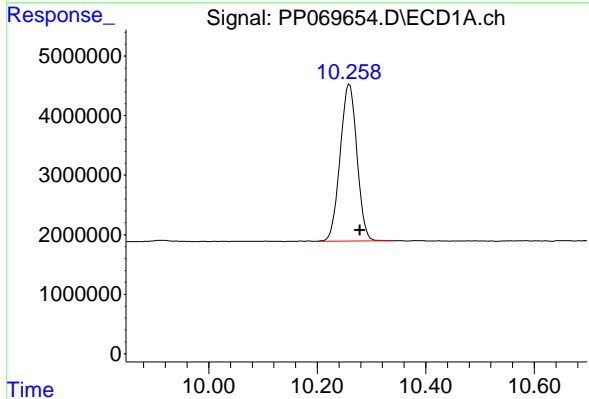
Manual Integrations
 APPROVED

Reviewed By :Yogesh Patel 02/12/2025
 Supervised By :Ankita Jodhani 02/12/2025



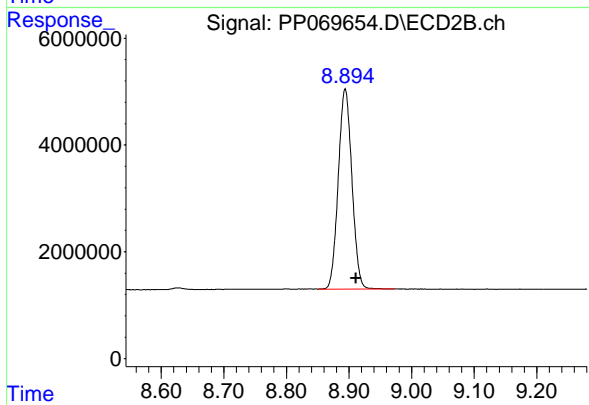
#1 Tetrachloro-m-xylene

R.T.: 3.836 min
 Delta R.T.: -0.004 min
 Response: 48825797
 Conc: 54.70 ng/ml



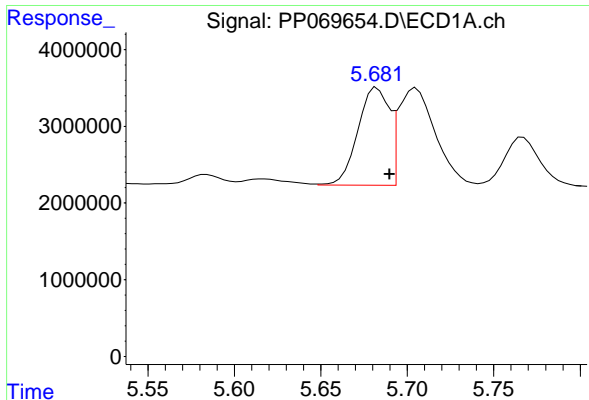
#2 Decachlorobiphenyl

R.T.: 10.259 min
 Delta R.T.: -0.019 min
 Response: 56569619
 Conc: 51.76 ng/ml



#2 Decachlorobiphenyl

R.T.: 8.894 min
 Delta R.T.: -0.017 min
 Response: 56759748
 Conc: 50.75 ng/ml



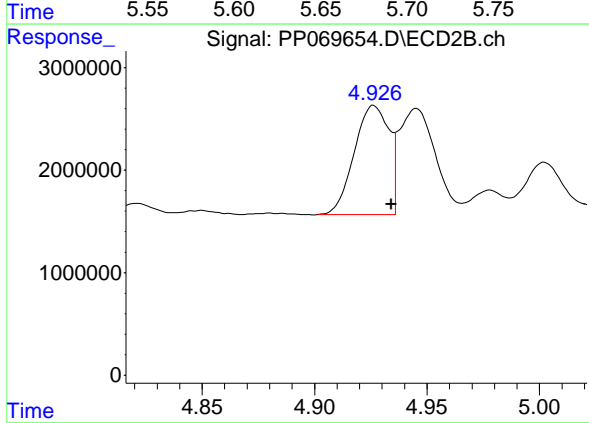
#21 AR-1248-1

R.T.: 5.683 min
 Delta R.T.: -0.007 min
 Response: 16131933
 Conc: 497.30 ng/ml

Instrument : ECD_P
 Client Sample Id : AR1248CCC500

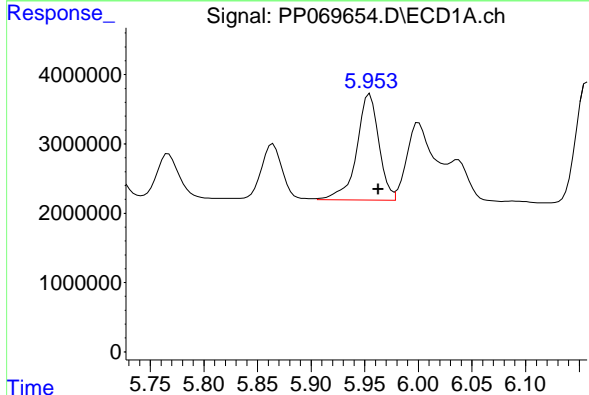
Manual Integrations
 APPROVED

Reviewed By :Yogesh Patel 02/12/2025
 Supervised By :Ankita Jodhani 02/12/2025



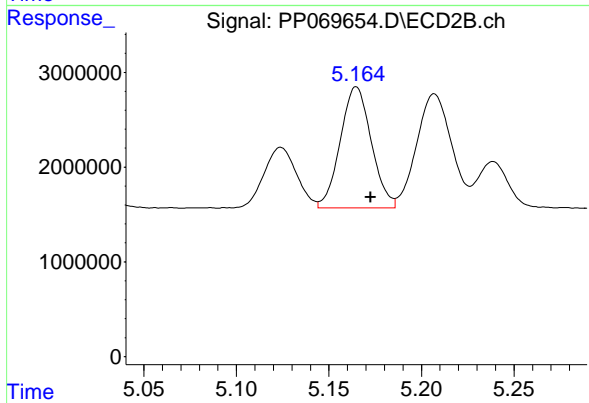
#21 AR-1248-1

R.T.: 4.926 min
 Delta R.T.: -0.008 min
 Response: 11480635
 Conc: 521.60 ng/ml



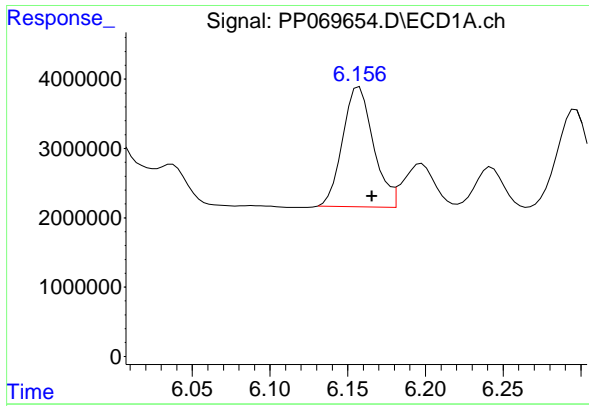
#22 AR-1248-2

R.T.: 5.955 min
 Delta R.T.: -0.008 min
 Response: 21968648
 Conc: 517.56 ng/ml



#22 AR-1248-2

R.T.: 5.165 min
 Delta R.T.: -0.008 min
 Response: 14968618
 Conc: 497.88 ng/ml



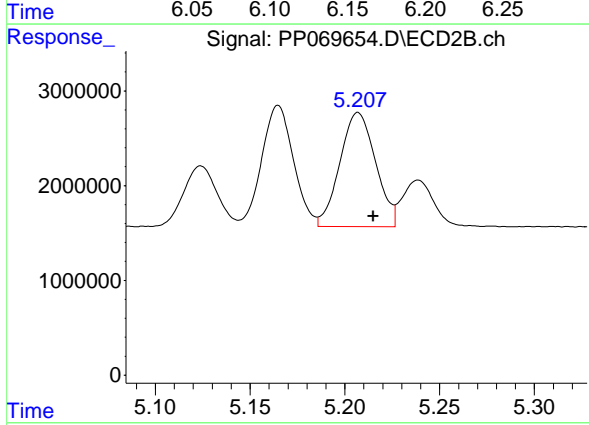
#23 AR-1248-3

R.T.: 6.157 min
 Delta R.T.: -0.008 min
 Response: 23848746
 Conc: 507.56 ng/ml

Instrument :
 ECD_P
 ClientSampleId :
 AR1248CCC500

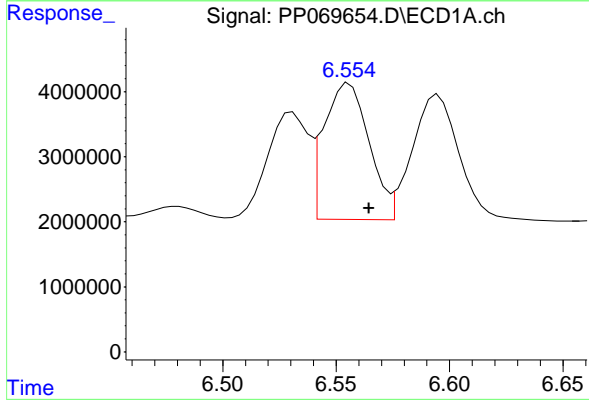
Manual Integrations
 APPROVED

Reviewed By :Yogesh Patel 02/12/2025
 Supervised By :Ankita Jodhani 02/12/2025



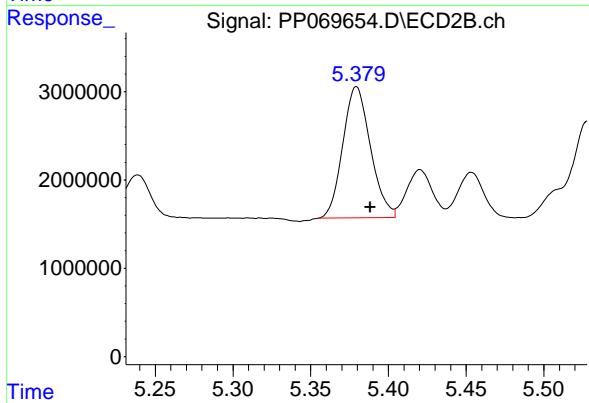
#23 AR-1248-3

R.T.: 5.207 min
 Delta R.T.: -0.008 min
 Response: 15813733
 Conc: 510.38 ng/ml



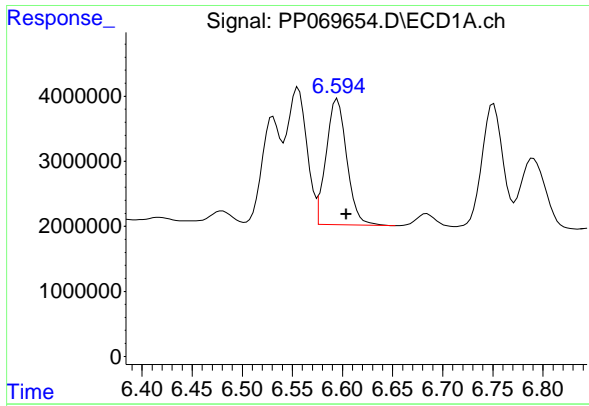
#24 AR-1248-4

R.T.: 6.556 min
 Delta R.T.: -0.009 min
 Response: 29046322
 Conc: 526.95 ng/ml



#24 AR-1248-4

R.T.: 5.379 min
 Delta R.T.: -0.009 min
 Response: 18387692
 Conc: 497.72 ng/ml m



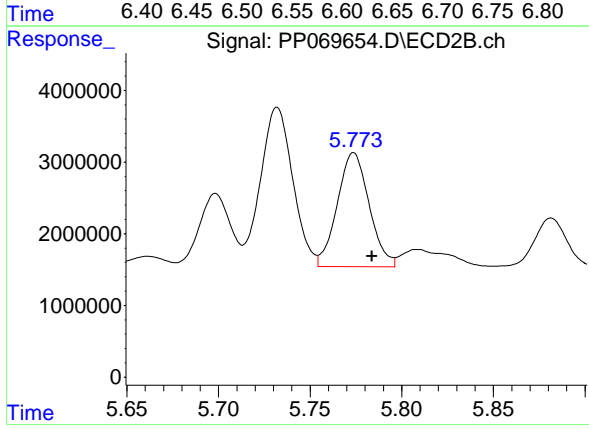
#25 AR-1248-5

R.T.: 6.595 min
 Delta R.T.: -0.009 min
 Response: 27738382
 Conc: 519.60 ng/ml

Instrument : ECD_P
 Client Sample Id : AR1248CCC500

Manual Integrations
 APPROVED

Reviewed By :Yogesh Patel 02/12/2025
 Supervised By :Ankita Jodhani 02/12/2025



#25 AR-1248-5

R.T.: 5.774 min
 Delta R.T.: -0.010 min
 Response: 19300393
 Conc: 516.20 ng/ml