

Data Path : Z:\pestpcbsrv\HPCHEM1\ECD\_P\Data\PP021125\  
 Data File : PP069666.D  
 Signal(s) : Signal #1: ECD1A.ch Signal #2: ECD2B.ch  
 Acq On : 11 Feb 2025 17:31  
 Operator : YP\AJ  
 Sample : AR1248CCC500  
 Misc :  
 ALS Vial : 5 Sample Multiplier: 1

**Instrument :**  
 ECD\_P  
**ClientSampleId :**  
 AR1248CCC500

Integration File signal 1: autoint1.e  
 Integration File signal 2: autoint2.e  
 Quant Time: Feb 12 01:27:57 2025  
 Quant Method : Z:\pestpcbsrv\HPCHEM1\ECD\_P\methods\PP012825.M  
 Quant Title : GC EXTRACTABLES  
 QLast Update : Wed Jan 29 00:13:21 2025  
 Response via : Initial Calibration  
 Integrator: ChemStation

Volume Inj. : 2 µl  
 Signal #1 Phase : ZB-MR1 Signal #2 Phase: ZB-MR2  
 Signal #1 Info : 30Mx0.32mmx 0.50µ Signal #2 Info : 30M x 0.32mm x 0.25µm

Compound	RT#1	RT#2	Resp#1	Resp#2	ng/ml	ng/ml
-----						
System Monitoring Compounds						
1) SA Tetrachlo...	4.533	3.837	74878308	47533874	52.308	53.257
2) SA Decachlor...	10.263	8.896	50126653	46883660	45.866	41.917
Target Compounds						
21) L5 AR-1248-1	5.686	4.927	16123227	11282312	497.031	512.586
22) L5 AR-1248-2	5.958	5.165	21122662	14622141	497.631	486.358
23) L5 AR-1248-3	6.161	5.208	21450949	15532847	456.528	501.314
24) L5 AR-1248-4	6.559	5.380	25287543	19631312	458.762	531.385
25) L5 AR-1248-5	6.598	5.775	24435138	19225669	457.726	514.201
-----						

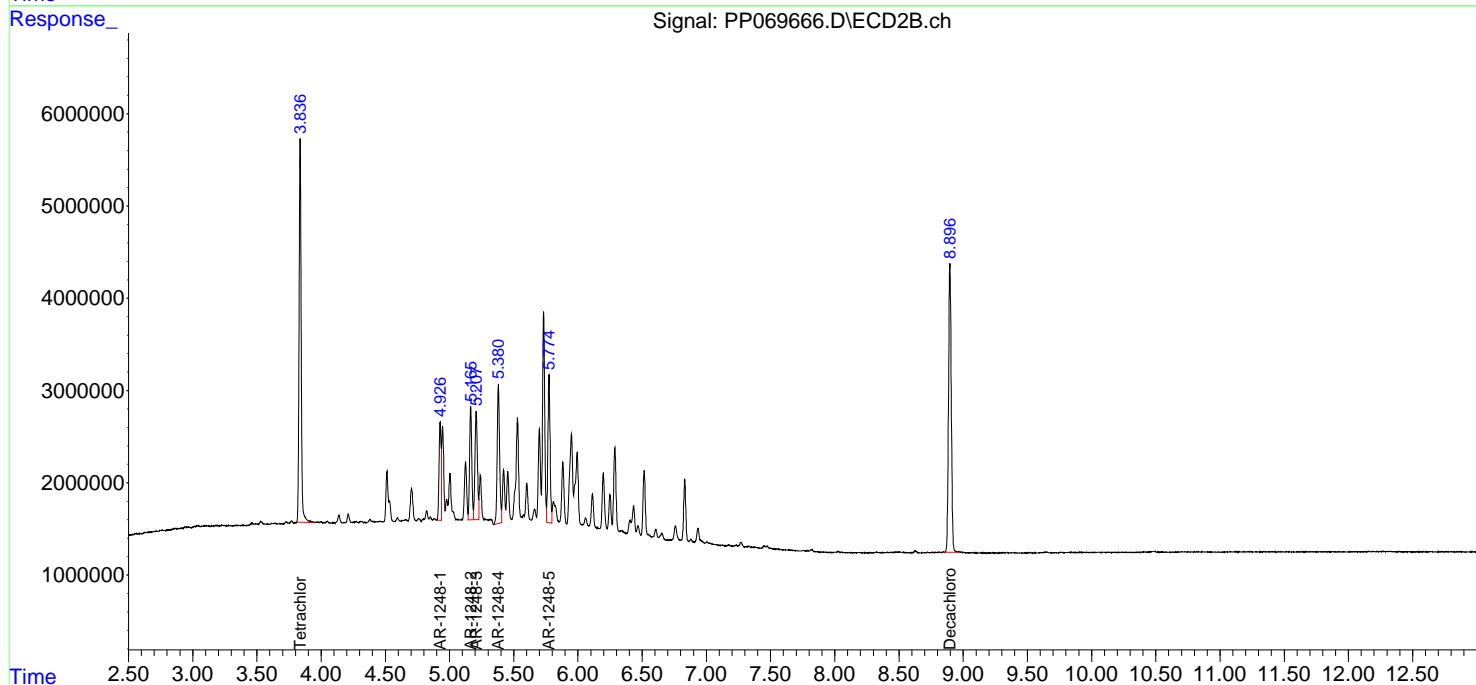
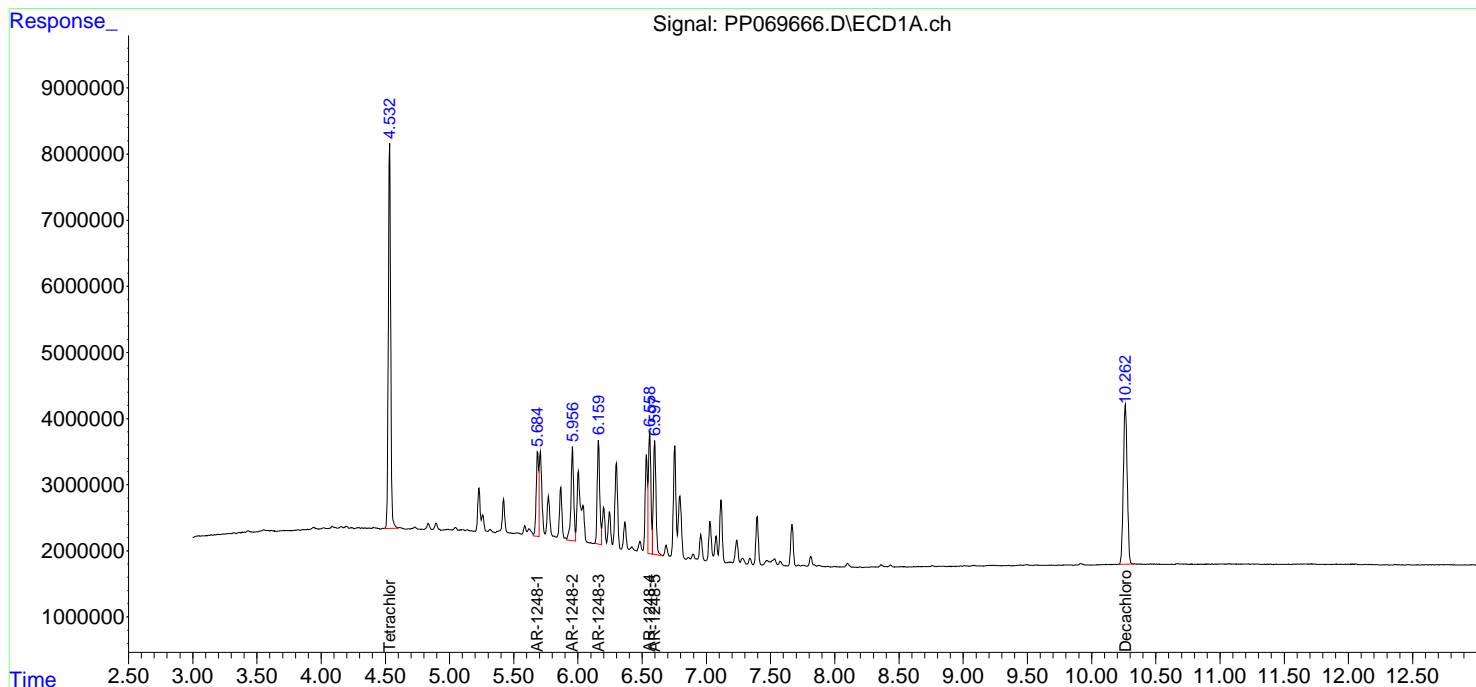
(f)=RT Delta > 1/2 Window (#)=Amounts differ by > 25% (m)=manual int.

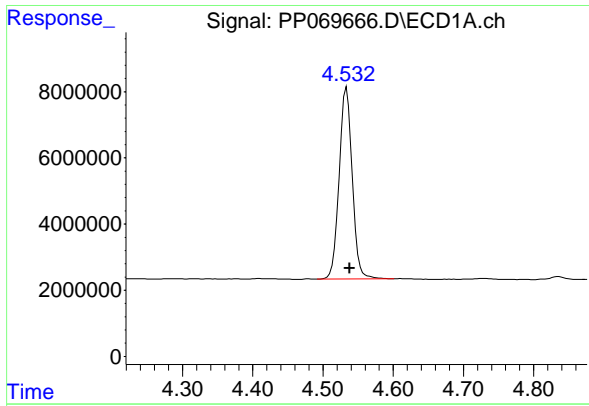
Data Path : Z:\pestpcbsrv\HPCHEM1\ECD\_P\Data\PP021125\  
 Data File : PP069666.D  
 Signal(s) : Signal #1: ECD1A.ch Signal #2: ECD2B.ch  
 Acq On : 11 Feb 2025 17:31  
 Operator : YP\AJ  
 Sample : AR1248CCC500  
 Misc :  
 ALS Vial : 5 Sample Multiplier: 1

Instrument :  
 ECD\_P  
 ClientSampleId :  
 AR1248CCC500

Integration File signal 1: autoint1.e  
 Integration File signal 2: autoint2.e  
 Quant Time: Feb 12 01:27:57 2025  
 Quant Method : Z:\pestpcbsrv\HPCHEM1\ECD\_P\methods\PP012825.M  
 Quant Title : GC EXTRACTABLES  
 QLast Update : Wed Jan 29 00:13:21 2025  
 Response via : Initial Calibration  
 Integrator: ChemStation

Volume Inj. : 2 µl  
 Signal #1 Phase : ZB-MR1 Signal #2 Phase: ZB-MR2  
 Signal #1 Info : 30Mx0.32mmx 0.50µm Signal #2 Info : 30M x 0.32mm x 0.25µm

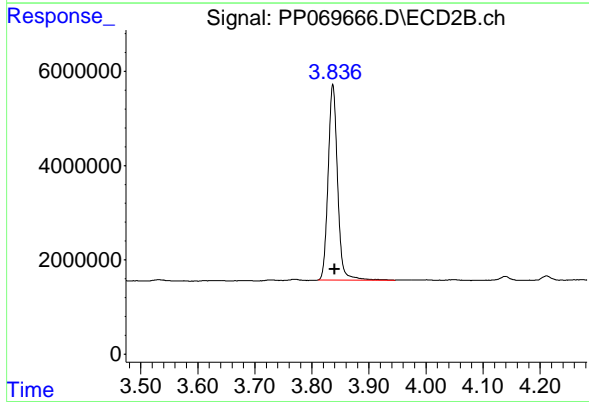




#1 Tetrachloro-m-xylene

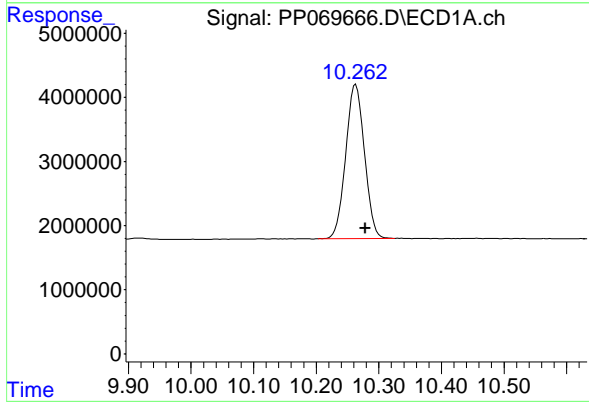
R.T.: 4.533 min  
 Delta R.T.: -0.005 min  
 Response: 74878308  
 Conc: 52.31 ng/ml

Instrument :  
 ECD\_P  
 ClientSampleId :  
 AR1248CCC500



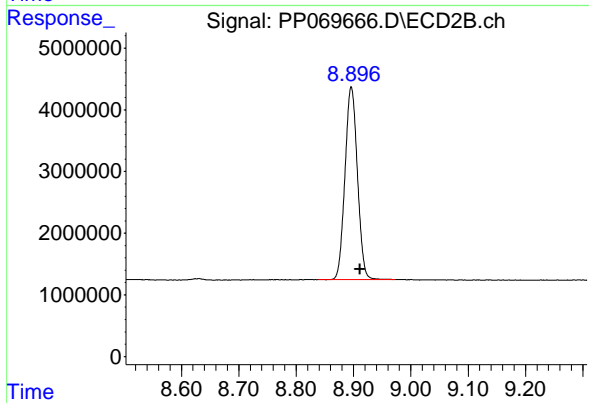
#1 Tetrachloro-m-xylene

R.T.: 3.837 min  
 Delta R.T.: -0.003 min  
 Response: 47533874  
 Conc: 53.26 ng/ml



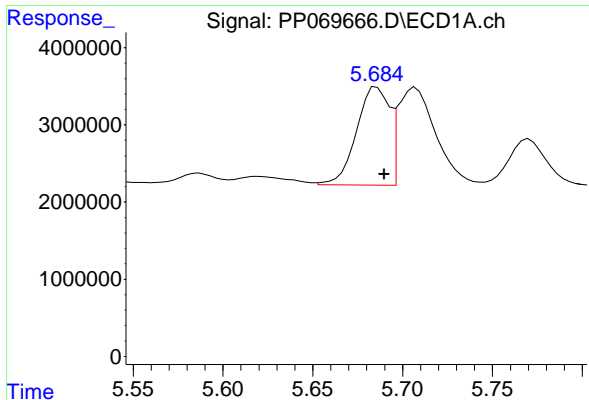
#2 Decachlorobiphenyl

R.T.: 10.263 min  
 Delta R.T.: -0.015 min  
 Response: 50126653  
 Conc: 45.87 ng/ml



#2 Decachlorobiphenyl

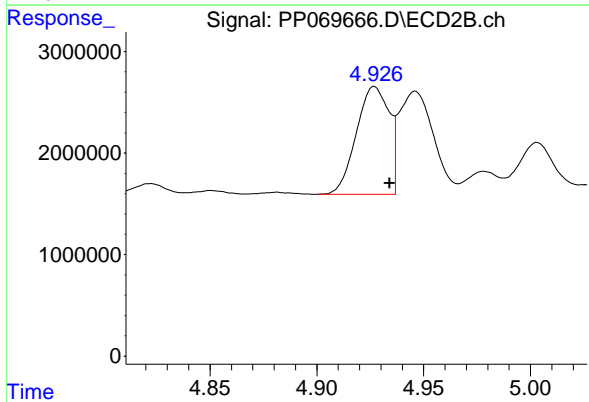
R.T.: 8.896 min  
 Delta R.T.: -0.015 min  
 Response: 46883660  
 Conc: 41.92 ng/ml



#21 AR-1248-1

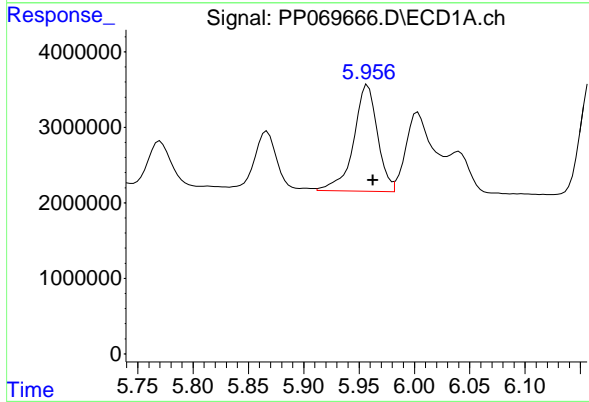
R.T.: 5.686 min  
 Delta R.T.: -0.004 min  
 Response: 16123227  
 Conc: 497.03 ng/ml

Instrument :  
 ECD\_P  
 ClientSampleId :  
 AR1248CCC500



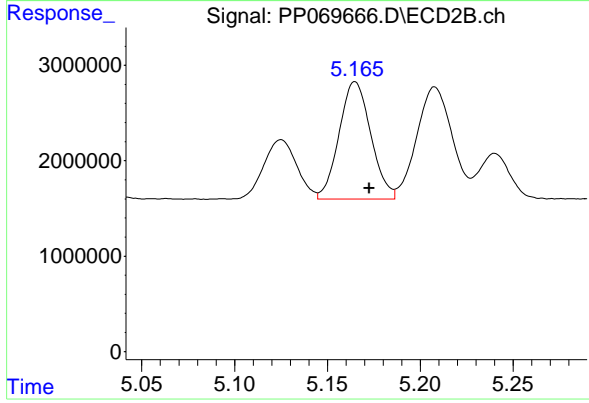
#21 AR-1248-1

R.T.: 4.927 min  
 Delta R.T.: -0.007 min  
 Response: 11282312  
 Conc: 512.59 ng/ml



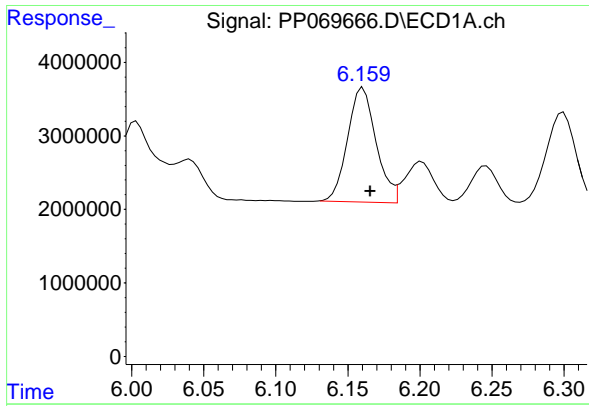
#22 AR-1248-2

R.T.: 5.958 min  
 Delta R.T.: -0.005 min  
 Response: 21122662  
 Conc: 497.63 ng/ml



#22 AR-1248-2

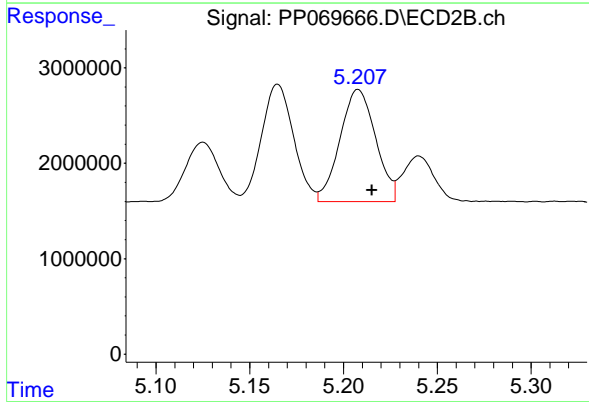
R.T.: 5.165 min  
 Delta R.T.: -0.008 min  
 Response: 14622141  
 Conc: 486.36 ng/ml



#23 AR-1248-3

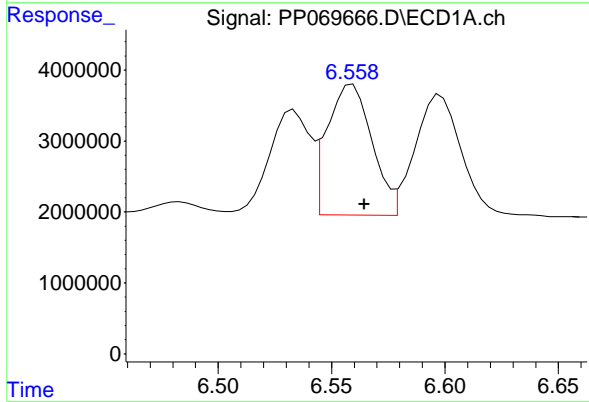
R.T.: 6.161 min  
 Delta R.T.: -0.005 min  
 Response: 21450949  
 Conc: 456.53 ng/ml

Instrument :  
 ECD\_P  
 ClientSampleId :  
 AR1248CCC500



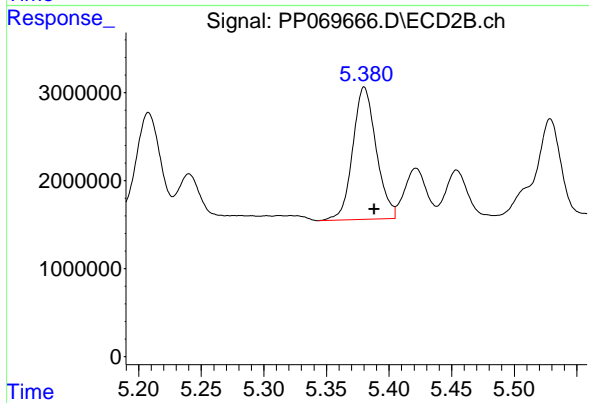
#23 AR-1248-3

R.T.: 5.208 min  
 Delta R.T.: -0.007 min  
 Response: 15532847  
 Conc: 501.31 ng/ml



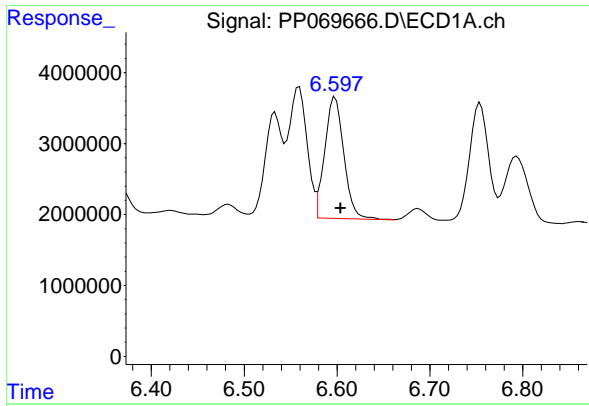
#24 AR-1248-4

R.T.: 6.559 min  
 Delta R.T.: -0.005 min  
 Response: 25287543  
 Conc: 458.76 ng/ml



#24 AR-1248-4

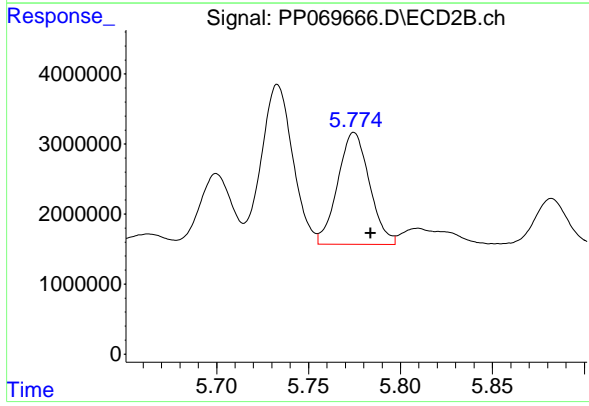
R.T.: 5.380 min  
 Delta R.T.: -0.008 min  
 Response: 19631312  
 Conc: 531.38 ng/ml



#25 AR-1248-5

R.T.: 6.598 min  
Delta R.T.: -0.006 min  
Response: 24435138  
Conc: 457.73 ng/ml

Instrument :  
ECD\_P  
ClientSampleId :  
AR1248CCC500



#25 AR-1248-5

R.T.: 5.775 min  
Delta R.T.: -0.009 min  
Response: 19225669  
Conc: 514.20 ng/ml