

Data Path : Z:\pestpcbsrv\HPCHEM1\ECD\_P\Data\PP021221\  
 Data File : PP033293.D  
 Signal(s) : Signal #1: ECD1A.CH Signal #2: ECD2B.CH  
 Acq On : 12 Feb 2021 8:52  
 Operator : DD\AJ  
 Sample : AR1660CCC500  
 Misc :  
 ALS Vial : 3 Sample Multiplier: 1

**Instrument :**  
 ECD\_P  
**ClientSampleId :**  
 AR1660CCC500

**Manual Integrations**  
**APPROVED**  
 mohammad  
 2/15/2021 8:16:13 AM

Integration File signal 1: autoint1.e  
 Integration File signal 2: autoint2.e  
 Quant Time: Feb 12 12:50:51 2021  
 Quant Method : Z:\pestpcbsrv\HPCHEM1\ECD\_P\methods\PP020821.M  
 Quant Title : GC EXTRACTABLES  
 QLast Update : Tue Feb 09 04:00:57 2021  
 Response via : Initial Calibration  
 Integrator: ChemStation 6890 Scale Mode: Small noise peaks clipped

Volume Inj. : 2 µl  
 Signal #1 Phase : ZB-MR1 Signal #2 Phase: ZB-MR2  
 Signal #1 Info : 30Mx0.32mmx 0.50µ Signal #2 Info : 30M x 0.32mm x 0.25µm

Compound	RT#1	RT#2	Resp#1	Resp#2	ng/ml	ng/ml
-----						
System Monitoring Compounds						
1) SA Tetrachlo...	4.730	4.000	3322657	2125934	54.184	51.989
2) SA Decachlor...	10.547	9.261	2385649	1830643	54.766	54.646
Target Compounds						
3) L1 AR-1016-1	6.028	5.246	918539	611695	560.407	557.338
4) L1 AR-1016-2	6.051	5.265	1367554	894176	546.107	547.920
5) L1 AR-1016-3	6.116	5.457	851023	499330	536.631	560.172
6) L1 AR-1016-4	6.221	5.508	726017	386735	547.785	537.024
7) L1 AR-1016-5	6.534	5.737	662762	418931	505.332m	445.169
31) L7 AR-1260-1	7.703	6.825	1261837	887623	576.355	517.497
32) L7 AR-1260-2	7.967	7.021	1629303	1083026	557.475	535.990
33) L7 AR-1260-3	8.331	7.175	1354815	1030246	529.352	519.327
34) L7 AR-1260-4	8.560	7.655	1270808	876203	520.171	520.837
35) L7 AR-1260-5	8.871	7.903	2938843	2059940	545.952	535.366

(f)=RT Delta > 1/2 Window (#)=Amounts differ by > 25% (m)=manual int.

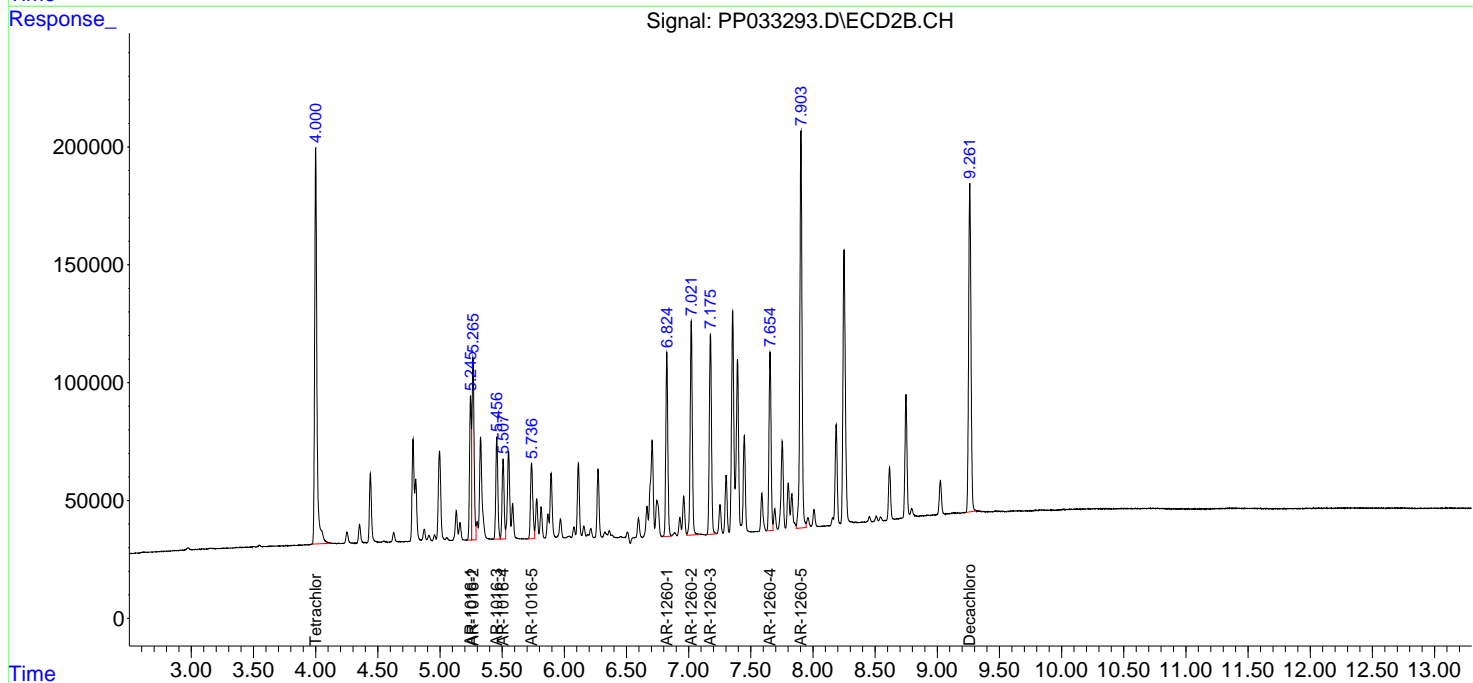
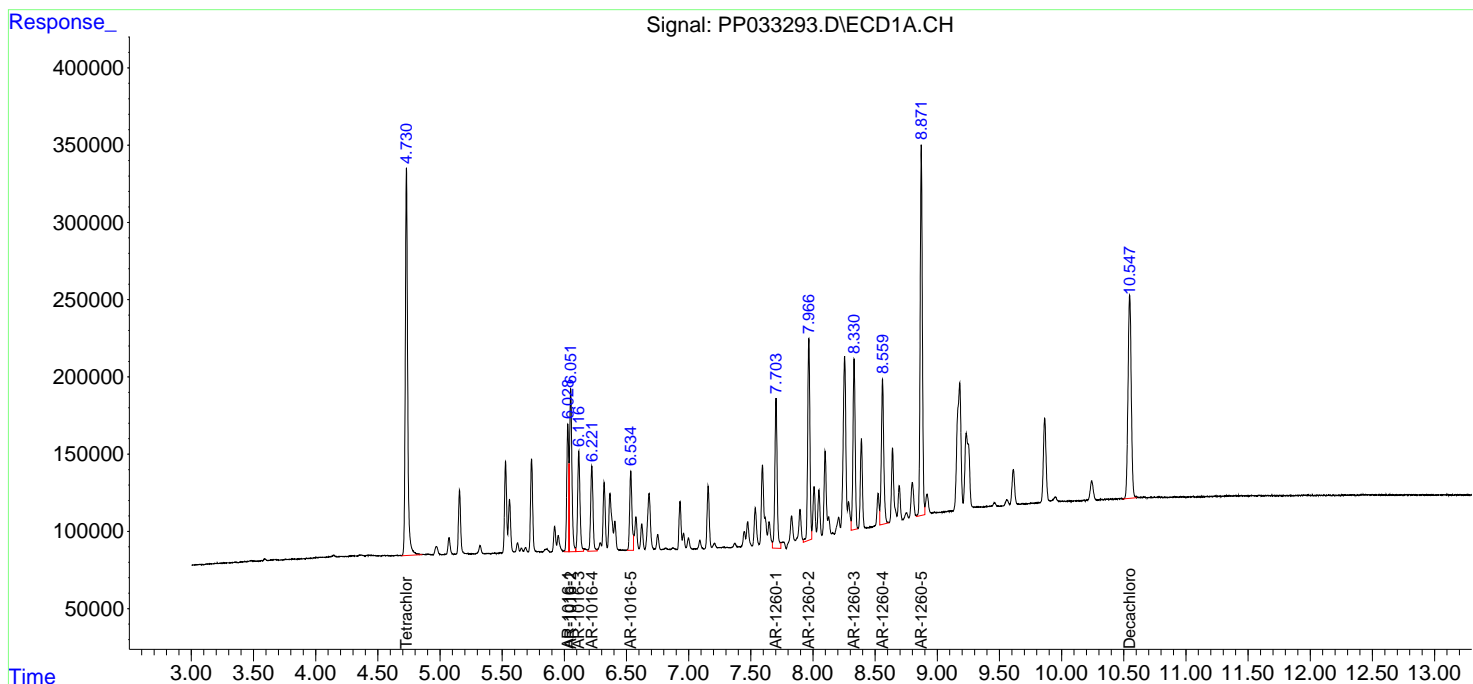
Data Path : Z:\pestpcbsrv\HPCHEM1\ECD\_P\Data\PP021221\  
 Data File : PP033293.D  
 Signal(s) : Signal #1: ECD1A.CH Signal #2: ECD2B.CH  
 Acq On : 12 Feb 2021 8:52  
 Operator : DD\AJ  
 Sample : AR1660CCC500  
 Misc :  
 ALS Vial : 3 Sample Multiplier: 1

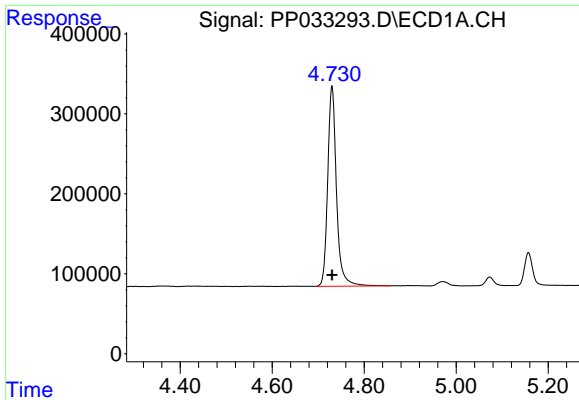
**Instrument :**  
 ECD\_P  
**Client Sampled :**  
 AR1660CCC500

**Manual Integrations**  
**APPROVED**  
 mohammad  
 2/15/2021 8:16:13 AM

Integration File signal 1: autoint1.e  
 Integration File signal 2: autoint2.e  
 Quant Time: Feb 12 12:50:51 2021  
 Quant Method : Z:\pestpcbsrv\HPCHEM1\ECD\_P\methods\PP020821.M  
 Quant Title : GC EXTRACTABLES  
 QLast Update : Tue Feb 09 04:00:57 2021  
 Response via : Initial Calibration  
 Integrator: ChemStation 6890 Scale Mode: Small noise peaks clipped

Volume Inj. : 2 µl  
 Signal #1 Phase : ZB-MR1 Signal #2 Phase: ZB-MR2  
 Signal #1 Info : 30Mx0.32mmx 0.50µ Signal #2 Info : 30M x 0.32mm x 0.25µm

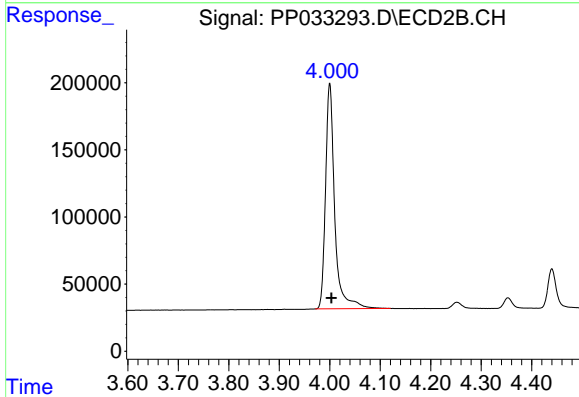




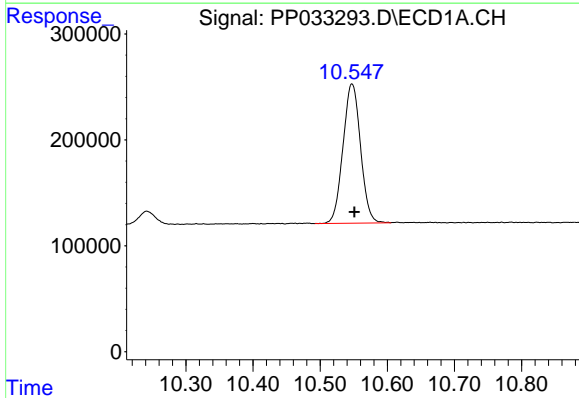
#1 Tetrachloro-m-xylene  
 R.T.: 4.730 min  
 Delta R.T.: 0.000 min  
 Response: 3322657  
 Conc: 54.18 ng/ml

Instrument :  
 ECD\_P  
 ClientSampleId :  
 AR1660CCC500

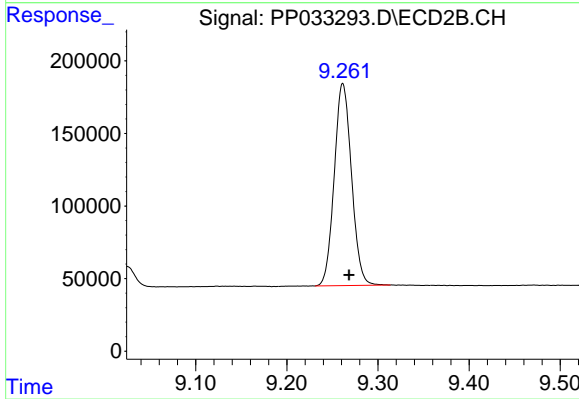
Manual Integrations  
 APPROVED  
 mohammad  
 2/15/2021 8:16:13 AM



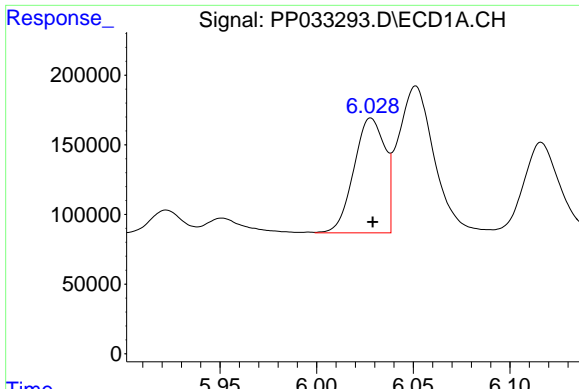
#1 Tetrachloro-m-xylene  
 R.T.: 4.000 min  
 Delta R.T.: -0.003 min  
 Response: 2125934  
 Conc: 51.99 ng/ml



#2 Decachlorobiphenyl  
 R.T.: 10.547 min  
 Delta R.T.: -0.004 min  
 Response: 2385649  
 Conc: 54.77 ng/ml



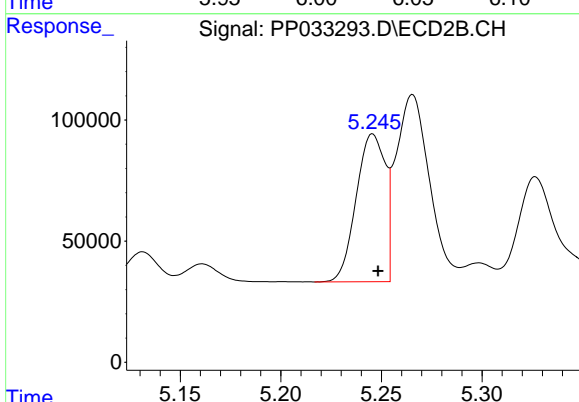
#2 Decachlorobiphenyl  
 R.T.: 9.261 min  
 Delta R.T.: -0.007 min  
 Response: 1830643  
 Conc: 54.65 ng/ml



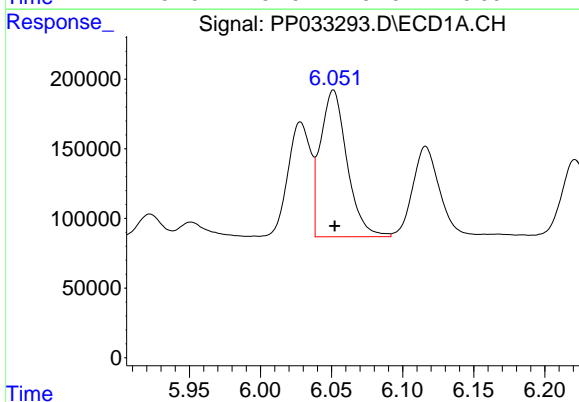
#3 AR-1016-1  
 R.T.: 6.028 min  
 Delta R.T.: 0.000 min  
 Response: 918539  
 Conc: 560.41 ng/ml

**Instrument :**  
 ECD\_P  
**ClientSampled :**  
 AR1660CCC500

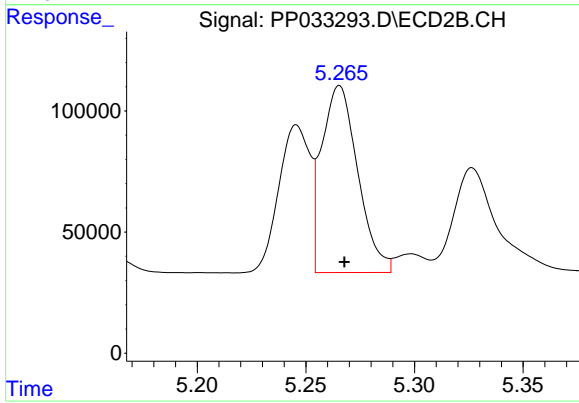
**Manual Integrations**  
**APPROVED**  
 mohammad  
 2/15/2021 8:16:13 AM



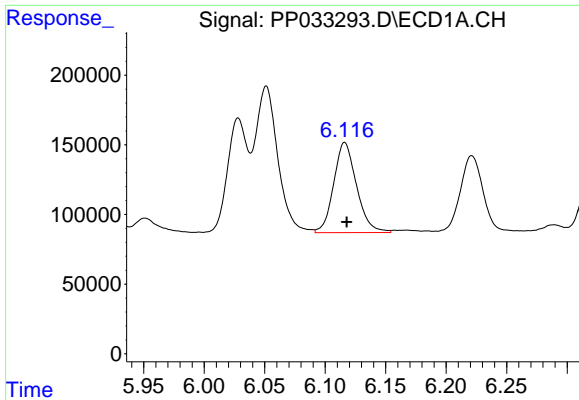
#3 AR-1016-1  
 R.T.: 5.246 min  
 Delta R.T.: -0.003 min  
 Response: 611695  
 Conc: 557.34 ng/ml



#4 AR-1016-2  
 R.T.: 6.051 min  
 Delta R.T.: 0.000 min  
 Response: 1367554  
 Conc: 546.11 ng/ml



#4 AR-1016-2  
 R.T.: 5.265 min  
 Delta R.T.: -0.002 min  
 Response: 894176  
 Conc: 547.92 ng/ml

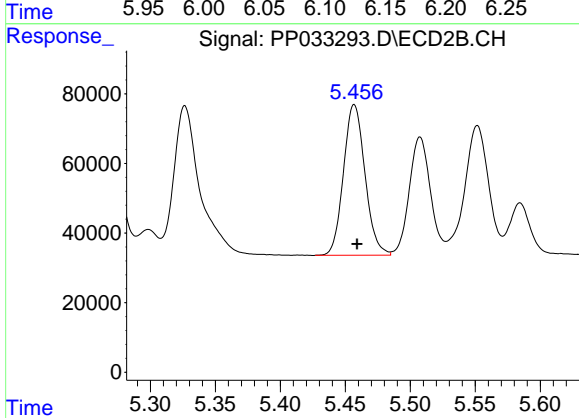


#5 AR-1016-3

R.T.: 6.116 min  
 Delta R.T.: -0.002 min  
 Response: 851023  
 Conc: 536.63 ng/ml

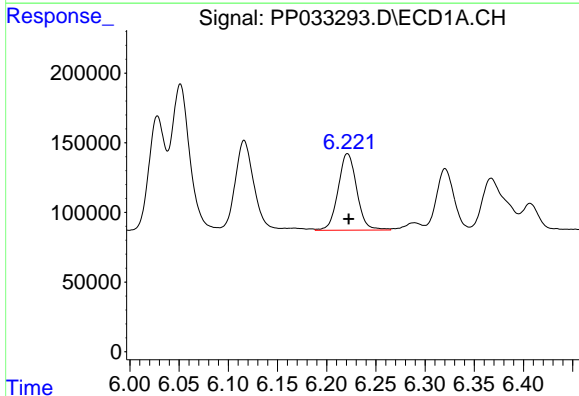
Instrument :  
 ECD\_P  
 ClientSampleId :  
 AR1660CCC500

Manual Integrations  
 APPROVED  
 mohammad  
 2/15/2021 8:16:13 AM



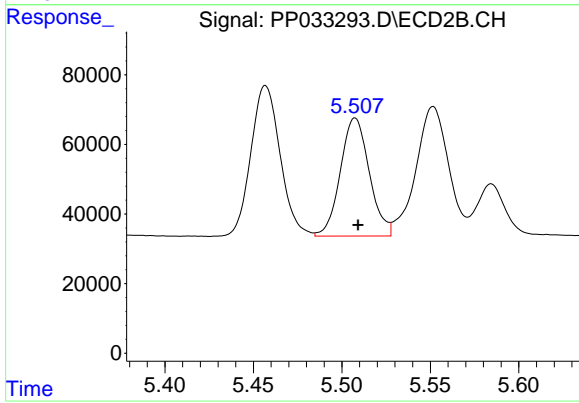
#5 AR-1016-3

R.T.: 5.457 min  
 Delta R.T.: -0.002 min  
 Response: 499330  
 Conc: 560.17 ng/ml



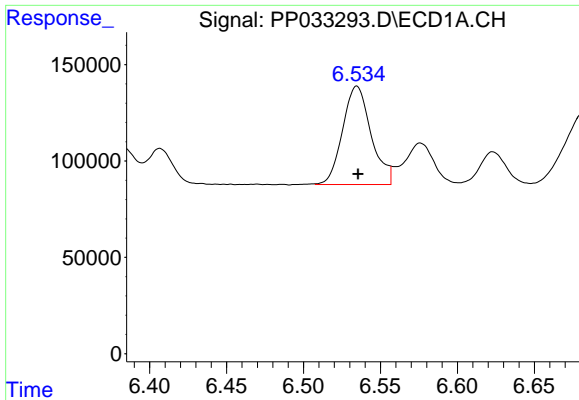
#6 AR-1016-4

R.T.: 6.221 min  
 Delta R.T.: -0.001 min  
 Response: 726017  
 Conc: 547.79 ng/ml



#6 AR-1016-4

R.T.: 5.508 min  
 Delta R.T.: -0.002 min  
 Response: 386735  
 Conc: 537.02 ng/ml

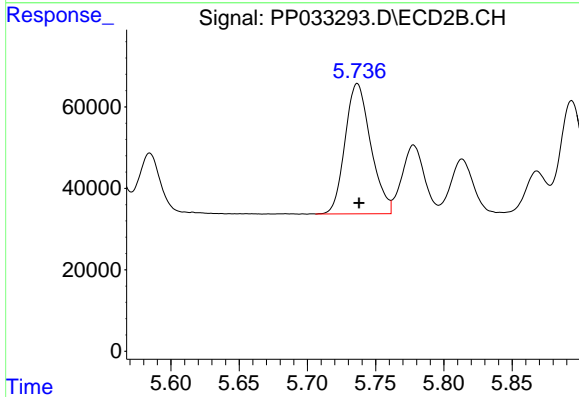


#7 AR-1016-5

R.T.: 6.534 min  
 Delta R.T.: -0.001 min  
 Response: 662762  
 Conc: 505.33 ng/ml m

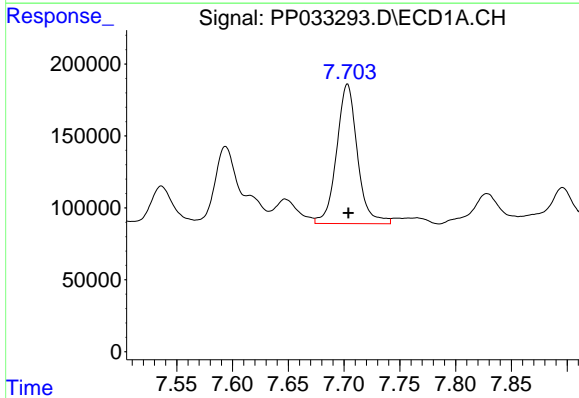
**Instrument :**  
 ECD\_P  
**ClientSampled :**  
 AR1660CCC500

**Manual Integrations**  
**APPROVED**  
 mohammad  
 2/15/2021 8:16:13 AM



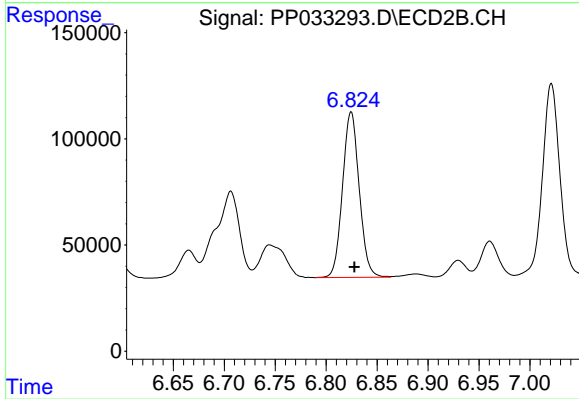
#7 AR-1016-5

R.T.: 5.737 min  
 Delta R.T.: -0.001 min  
 Response: 418931  
 Conc: 445.17 ng/ml



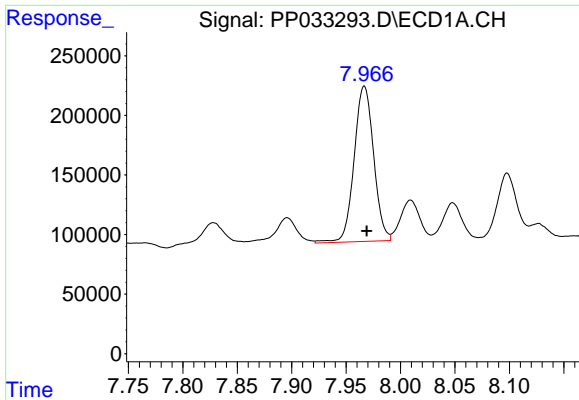
#31 AR-1260-1

R.T.: 7.703 min  
 Delta R.T.: 0.000 min  
 Response: 1261837  
 Conc: 576.35 ng/ml



#31 AR-1260-1

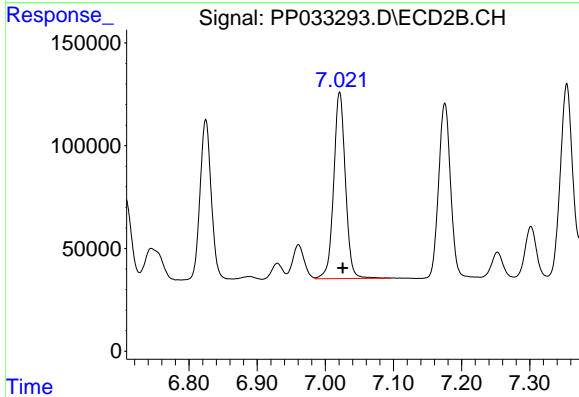
R.T.: 6.825 min  
 Delta R.T.: -0.003 min  
 Response: 887623  
 Conc: 517.50 ng/ml



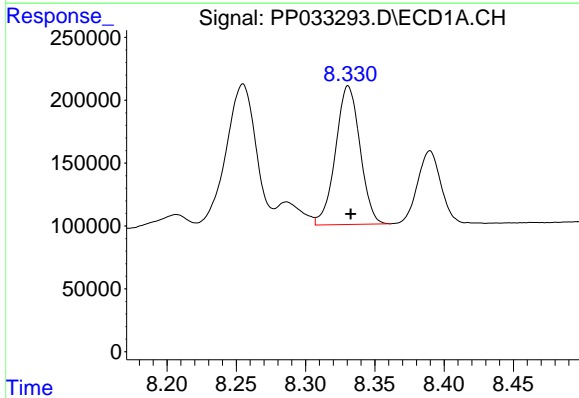
#32 AR-1260-2  
 R.T.: 7.967 min  
 Delta R.T.: -0.002 min  
 Response: 1629303  
 Conc: 557.48 ng/ml

**Instrument :**  
 ECD\_P  
**ClientSampled :**  
 AR1660CCC500

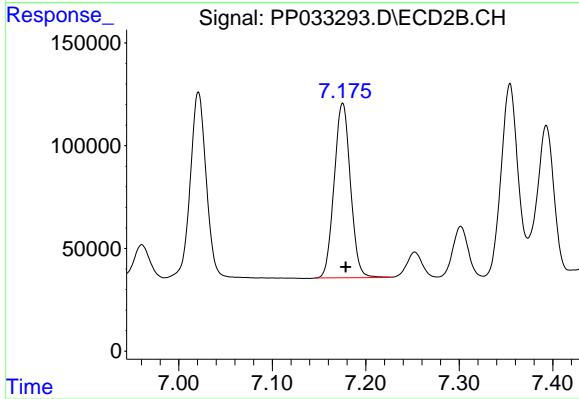
**Manual Integrations**  
**APPROVED**  
 mohammad  
 2/15/2021 8:16:13 AM



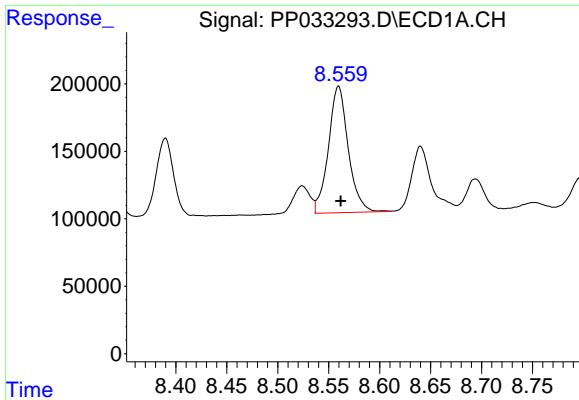
#32 AR-1260-2  
 R.T.: 7.021 min  
 Delta R.T.: -0.004 min  
 Response: 1083026  
 Conc: 535.99 ng/ml



#33 AR-1260-3  
 R.T.: 8.331 min  
 Delta R.T.: -0.002 min  
 Response: 1354815  
 Conc: 529.35 ng/ml



#33 AR-1260-3  
 R.T.: 7.175 min  
 Delta R.T.: -0.003 min  
 Response: 1030246  
 Conc: 519.33 ng/ml



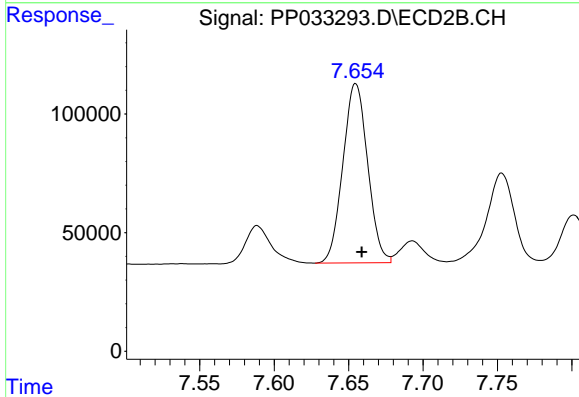
#34 AR-1260-4

R.T.: 8.560 min  
 Delta R.T.: -0.002 min  
 Response: 1270808  
 Conc: 520.17 ng/ml

Instrument :  
 ECD\_P  
 ClientSampled :  
 AR1660CCC500

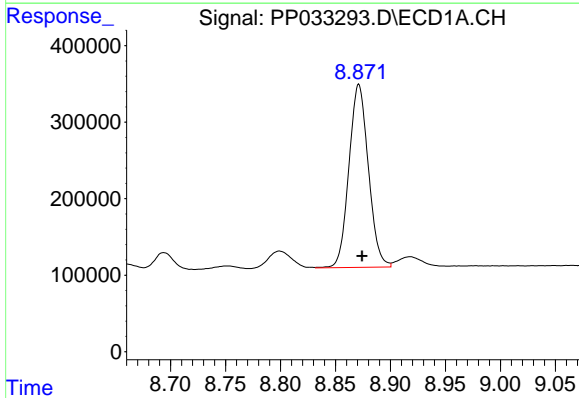
Manual Integrations  
 APPROVED

mohammad  
 2/15/2021 8:16:13 AM



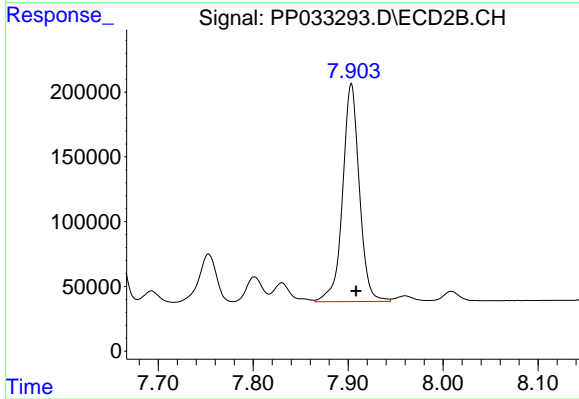
#34 AR-1260-4

R.T.: 7.655 min  
 Delta R.T.: -0.004 min  
 Response: 876203  
 Conc: 520.84 ng/ml



#35 AR-1260-5

R.T.: 8.871 min  
 Delta R.T.: -0.003 min  
 Response: 2938843  
 Conc: 545.95 ng/ml



#35 AR-1260-5

R.T.: 7.903 min  
 Delta R.T.: -0.005 min  
 Response: 2059940  
 Conc: 535.37 ng/ml