

Data Path : Z:\pestpcbsrv\HPCHEM1\ECD_P\Data\PP021221\
 Data File : PP033296.D
 Signal(s) : Signal #1: ECD1A.CH Signal #2: ECD2B.CH
 Acq On : 12 Feb 2021 10:40
 Operator : DD\AJ
 Sample : I.BLK
 Misc :
 ALS Vial : 2 Sample Multiplier: 1

Instrument :
 ECD_P
 ClientSampleId :
 I.BLK

Integration File signal 1: autoint1.e
 Integration File signal 2: autoint2.e
 Quant Time: Feb 12 12:52:23 2021
 Quant Method : Z:\pestpcbsrv\HPCHEM1\ECD_P\methods\PP020821.M
 Quant Title : GC EXTRACTABLES
 QLast Update : Tue Feb 09 04:00:57 2021
 Response via : Initial Calibration
 Integrator: ChemStation 6890 Scale Mode: Small noise peaks clipped

Volume Inj. : 2 µl
 Signal #1 Phase : ZB-MR1 Signal #2 Phase: ZB-MR2
 Signal #1 Info : 30Mx0.32mmx 0.50µ Signal #2 Info : 30M x 0.32mm x 0.25µm

| Compound | RT#1 | RT#2 | Resp#1 | Resp#2 | ng/ml | ng/ml |
|-----------------------------|--------|-------|---------|--------|--------|--------|
| ----- | | | | | | |
| System Monitoring Compounds | | | | | | |
| 1) SA Tetrachlo... | 4.726 | 3.997 | 1369806 | 870797 | 22.338 | 21.295 |
| 2) SA Decachlor... | 10.545 | 9.261 | 1014829 | 788828 | 23.297 | 23.547 |

Target Compounds

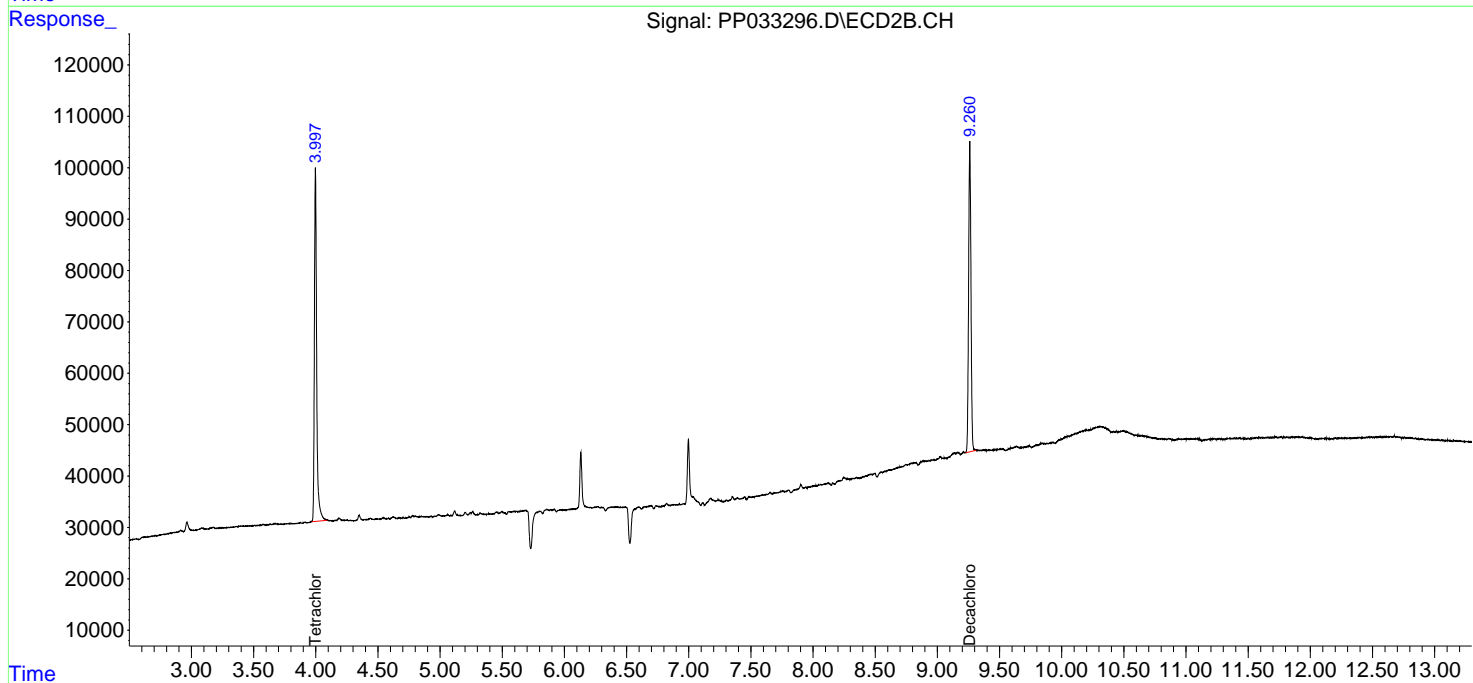
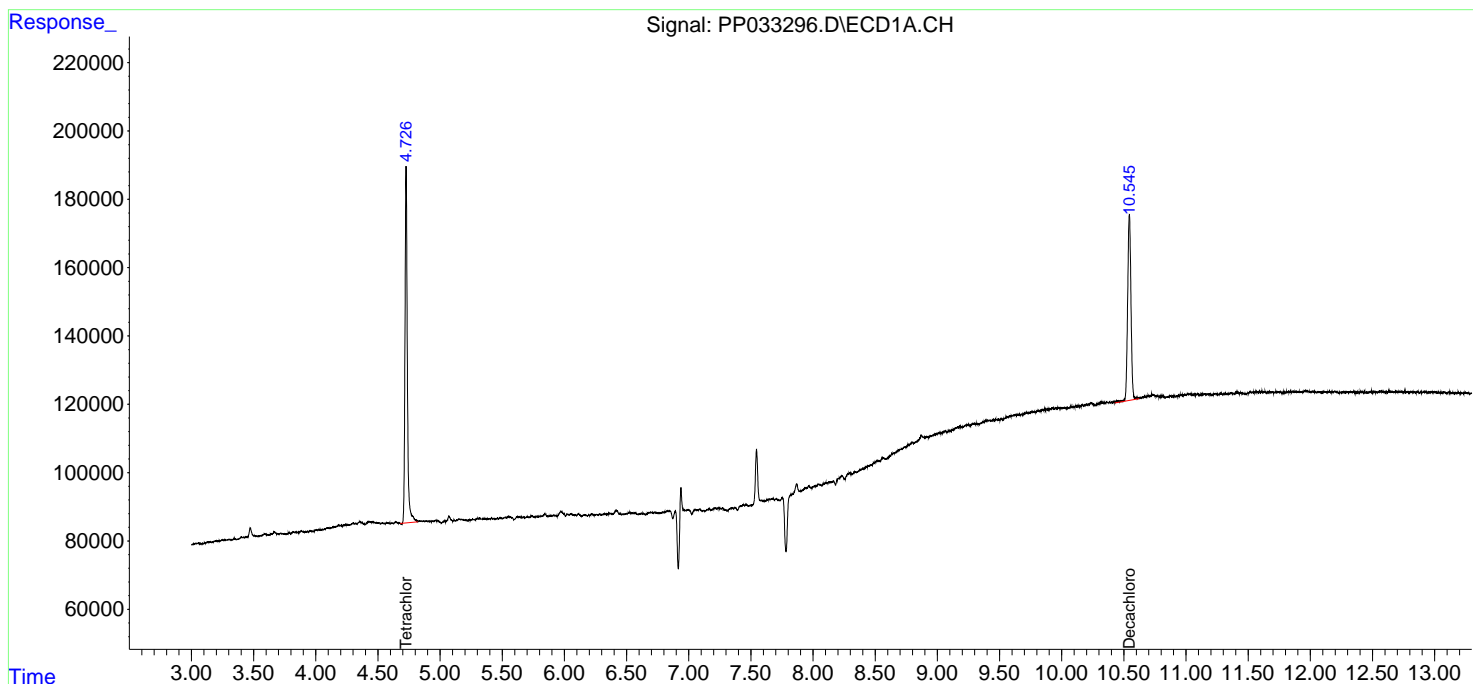
(f)=RT Delta > 1/2 Window (#)=Amounts differ by > 25% (m)=manual int.

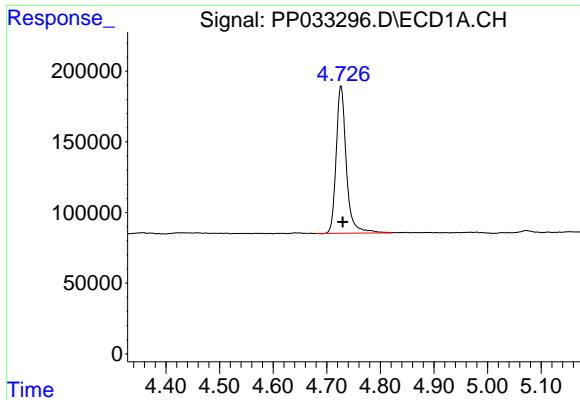
Data Path : Z:\pestpcbsrv\HPCHEM1\ECD_P\Data\PP021221\
 Data File : PP033296.D
 Signal(s) : Signal #1: ECD1A.CH Signal #2: ECD2B.CH
 Acq On : 12 Feb 2021 10:40
 Operator : DD\AJ
 Sample : I.BLK
 Misc :
 ALS Vial : 2 Sample Multiplier: 1

Instrument :
 ECD_P
 ClientSampled :
 I.BLK

Integration File signal 1: autoint1.e
 Integration File signal 2: autoint2.e
 Quant Time: Feb 12 12:52:23 2021
 Quant Method : Z:\pestpcbsrv\HPCHEM1\ECD_P\methods\PP020821.M
 Quant Title : GC EXTRACTABLES
 QLast Update : Tue Feb 09 04:00:57 2021
 Response via : Initial Calibration
 Integrator: ChemStation 6890 Scale Mode: Small noise peaks clipped

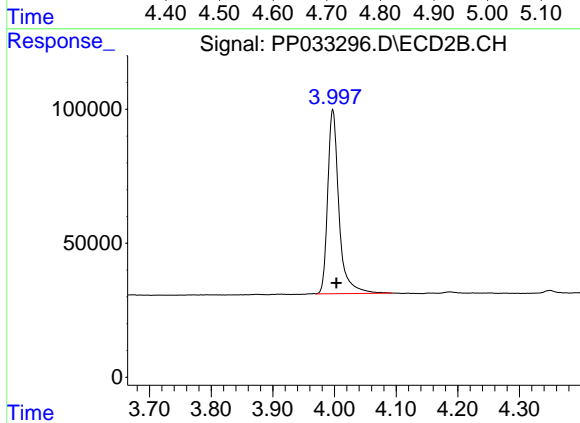
Volume Inj. : 2 µl
 Signal #1 Phase : ZB-MR1 Signal #2 Phase: ZB-MR2
 Signal #1 Info : 30Mx0.32mmx 0.50µ Signal #2 Info : 30M x 0.32mm x 0.25µm



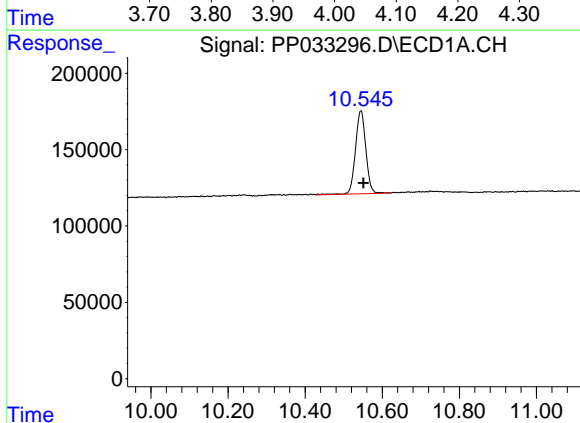


#1 Tetrachloro-m-xylene
 R.T.: 4.726 min
 Delta R.T.: -0.004 min
 Response: 1369806
 Conc: 22.34 ng/ml

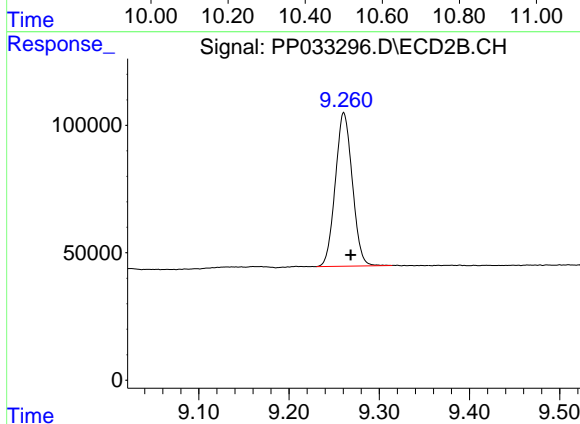
Instrument :
 ECD_P
 ClientSampleId :
 I.BLK



#1 Tetrachloro-m-xylene
 R.T.: 3.997 min
 Delta R.T.: -0.006 min
 Response: 870797
 Conc: 21.30 ng/ml



#2 Decachlorobiphenyl
 R.T.: 10.545 min
 Delta R.T.: -0.006 min
 Response: 1014829
 Conc: 23.30 ng/ml



#2 Decachlorobiphenyl
 R.T.: 9.261 min
 Delta R.T.: -0.008 min
 Response: 788828
 Conc: 23.55 ng/ml