

Data Path : Z:\pestpcbsrv\HPCHEM1\ECD_P\Data\PP021221\
 Data File : PP033314.D
 Signal(s) : Signal #1: ECD1A.CH Signal #2: ECD2B.CH
 Acq On : 12 Feb 2021 16:05
 Operator : DD\AJ
 Sample : M1397-01
 Misc :
 ALS Vial : 19 Sample Multiplier: 1

Instrument :
 ECD_P
 ClientSampleId :
 FK-BPM-04-014-ABCD

Integration File signal 1: autoint1.e
 Integration File signal 2: autoint2.e
 Quant Time: Feb 12 16:54:34 2021
 Quant Method : Z:\pestpcbsrv\HPCHEM1\ECD_P\methods\PP020821.M
 Quant Title : GC EXTRACTABLES
 QLast Update : Tue Feb 09 04:00:57 2021
 Response via : Initial Calibration
 Integrator: ChemStation 6890 Scale Mode: Small noise peaks clipped

Volume Inj. : 2 µl
 Signal #1 Phase : ZB-MR1 Signal #2 Phase: ZB-MR2
 Signal #1 Info : 30Mx0.32mmx 0.50µ Signal #2 Info : 30M x 0.32mm x 0.25µm

Compound	RT#1	RT#2	Resp#1	Resp#2	ng/ml	ng/ml

System Monitoring Compounds						
1) SA Tetrachlo...	4.727	4.000	1420172	966618	23.159	23.638
2) SA Decachlor...	10.544	9.260	999981	814111	22.956	24.302

Target Compounds

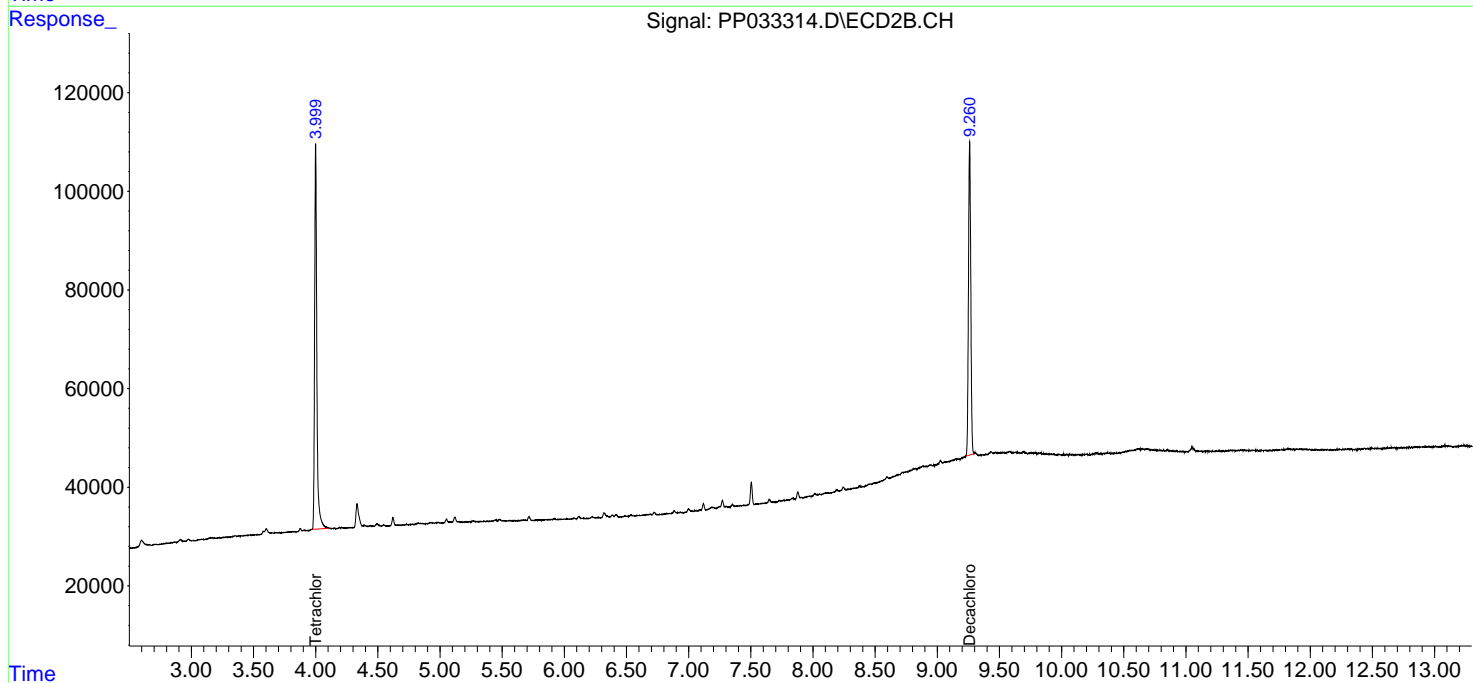
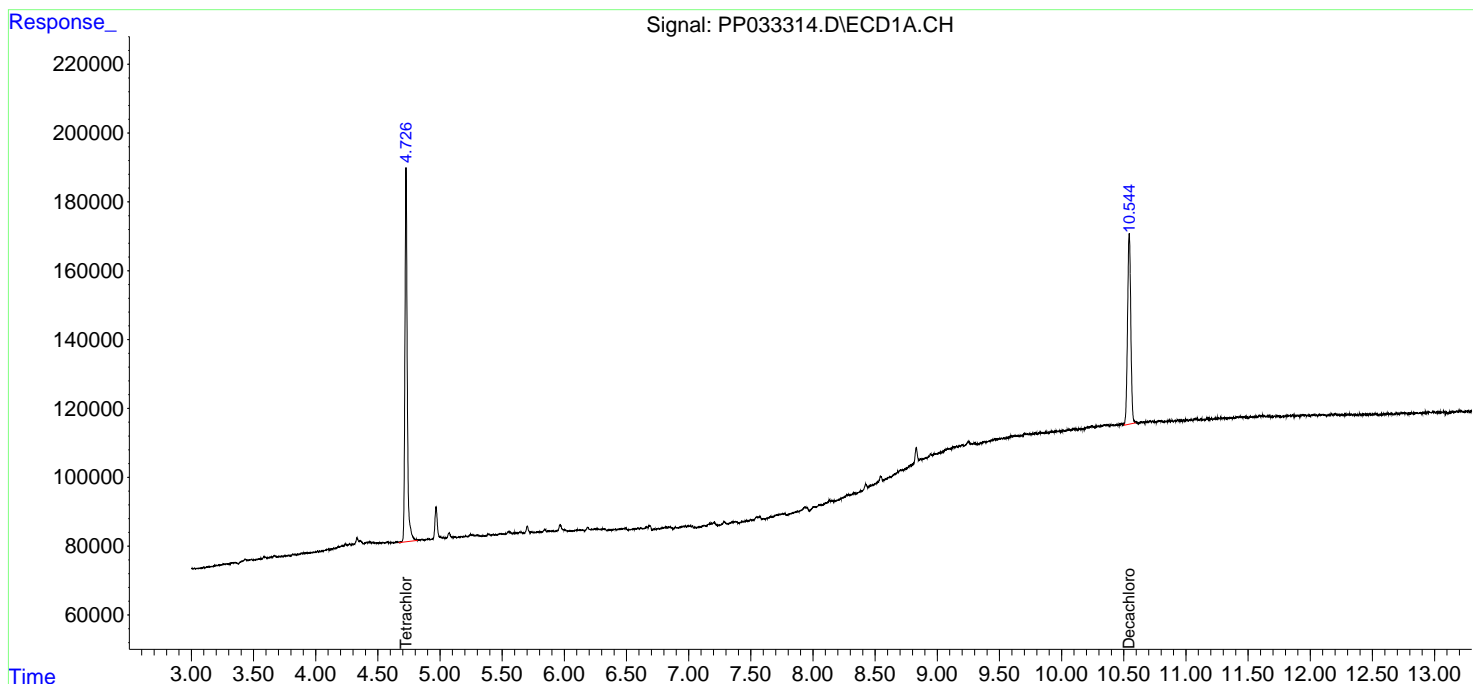
(f)=RT Delta > 1/2 Window (#)=Amounts differ by > 25% (m)=manual int.

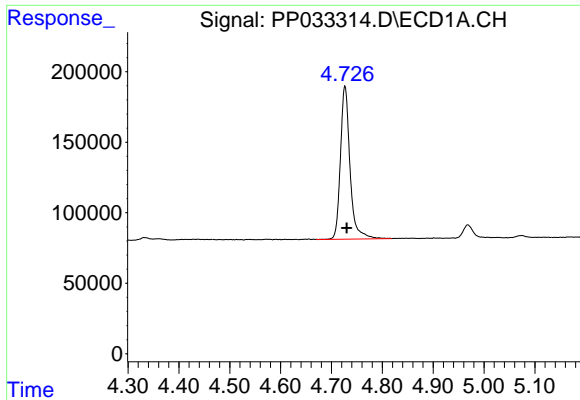
Data Path : Z:\pestpcbsrv\HPCHEM1\ECD_P\Data\PP021221\
 Data File : PP033314.D
 Signal(s) : Signal #1: ECD1A.CH Signal #2: ECD2B.CH
 Acq On : 12 Feb 2021 16:05
 Operator : DD\AJ
 Sample : M1397-01
 Misc :
 ALS Vial : 19 Sample Multiplier: 1

Instrument :
 ECD_P
 ClientSampleId :
 FK-BPM-04-014-ABCD

Integration File signal 1: autoint1.e
 Integration File signal 2: autoint2.e
 Quant Time: Feb 12 16:54:34 2021
 Quant Method : Z:\pestpcbsrv\HPCHEM1\ECD_P\methods\PP020821.M
 Quant Title : GC EXTRACTABLES
 QLast Update : Tue Feb 09 04:00:57 2021
 Response via : Initial Calibration
 Integrator: ChemStation 6890 Scale Mode: Small noise peaks clipped

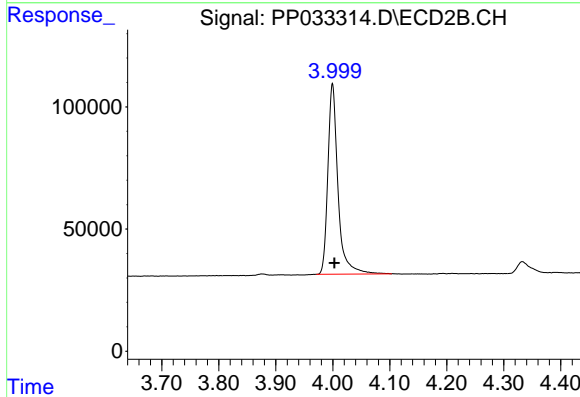
Volume Inj. : 2 µl
 Signal #1 Phase : ZB-MR1 Signal #2 Phase: ZB-MR2
 Signal #1 Info : 30Mx0.32mmx 0.50µ Signal #2 Info : 30M x 0.32mm x 0.25µm



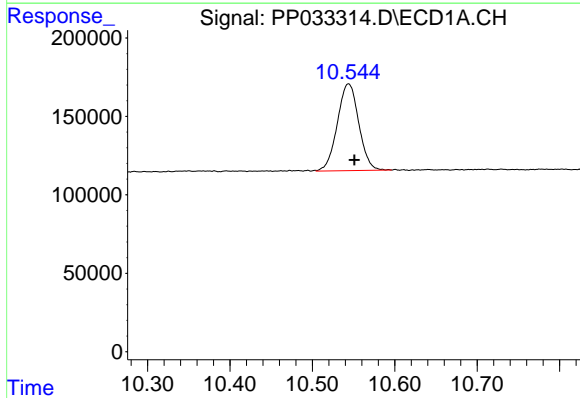


#1 Tetrachloro-m-xylene
 R.T.: 4.727 min
 Delta R.T.: -0.003 min
 Response: 1420172
 Conc: 23.16 ng/ml

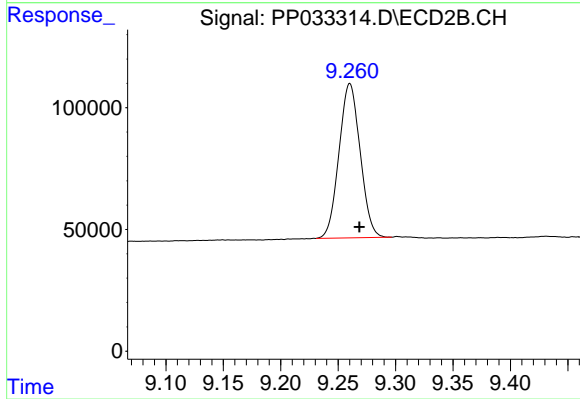
Instrument :
 ECD_P
 ClientSampleId :
 FK-BPM-04-014-ABCD



#1 Tetrachloro-m-xylene
 R.T.: 4.000 min
 Delta R.T.: -0.003 min
 Response: 966618
 Conc: 23.64 ng/ml



#2 Decachlorobiphenyl
 R.T.: 10.544 min
 Delta R.T.: -0.007 min
 Response: 999981
 Conc: 22.96 ng/ml



#2 Decachlorobiphenyl
 R.T.: 9.260 min
 Delta R.T.: -0.008 min
 Response: 814111
 Conc: 24.30 ng/ml