

Data Path : Z:\pestpcbsrv\HPCHEM1\ECD_P\Data\PP021221\
 Data File : PP033326.D
 Signal(s) : Signal #1: ECD1A.CH Signal #2: ECD2B.CH
 Acq On : 12 Feb 2021 20:16
 Operator : DD\AJ
 Sample : AR1242CCC500
 Misc :
 ALS Vial : 4 Sample Multiplier: 1

Instrument :
 ECD_P
 ClientSampleId :
 AR1242CCC500

Integration File signal 1: autoint1.e
 Integration File signal 2: autoint2.e
 Quant Time: Feb 13 00:09:42 2021
 Quant Method : Z:\pestpcbsrv\HPCHEM1\ECD_P\methods\PP020821.M
 Quant Title : GC EXTRACTABLES
 QLast Update : Tue Feb 09 04:00:57 2021
 Response via : Initial Calibration
 Integrator: ChemStation 6890 Scale Mode: Small noise peaks clipped

Volume Inj. : 2 µl
 Signal #1 Phase : ZB-MR1 Signal #2 Phase: ZB-MR2
 Signal #1 Info : 30Mx0.32mmx 0.50µ Signal #2 Info : 30M x 0.32mm x 0.25µm

Compound	RT#1	RT#2	Resp#1	Resp#2	ng/ml	ng/ml

System Monitoring Compounds						
1) SA Tetrachlo...	4.726	3.996	3299055	2216932	53.799	54.215
2) SA Decachlor...	10.542	9.259	2404750	1893287	55.204	56.516
Target Compounds						
16) L4 AR-1242-1	6.024	5.242	642864	449524	494.547	519.363
17) L4 AR-1242-2	6.048	5.262	975585	653903	495.145	509.522
18) L4 AR-1242-3	6.113	5.452	624867	365421	493.021	519.870
19) L4 AR-1242-4	6.218	5.547	510636	336651	465.212	483.338
20) L4 AR-1242-5	6.994	6.109	531357	410378	511.436	486.016

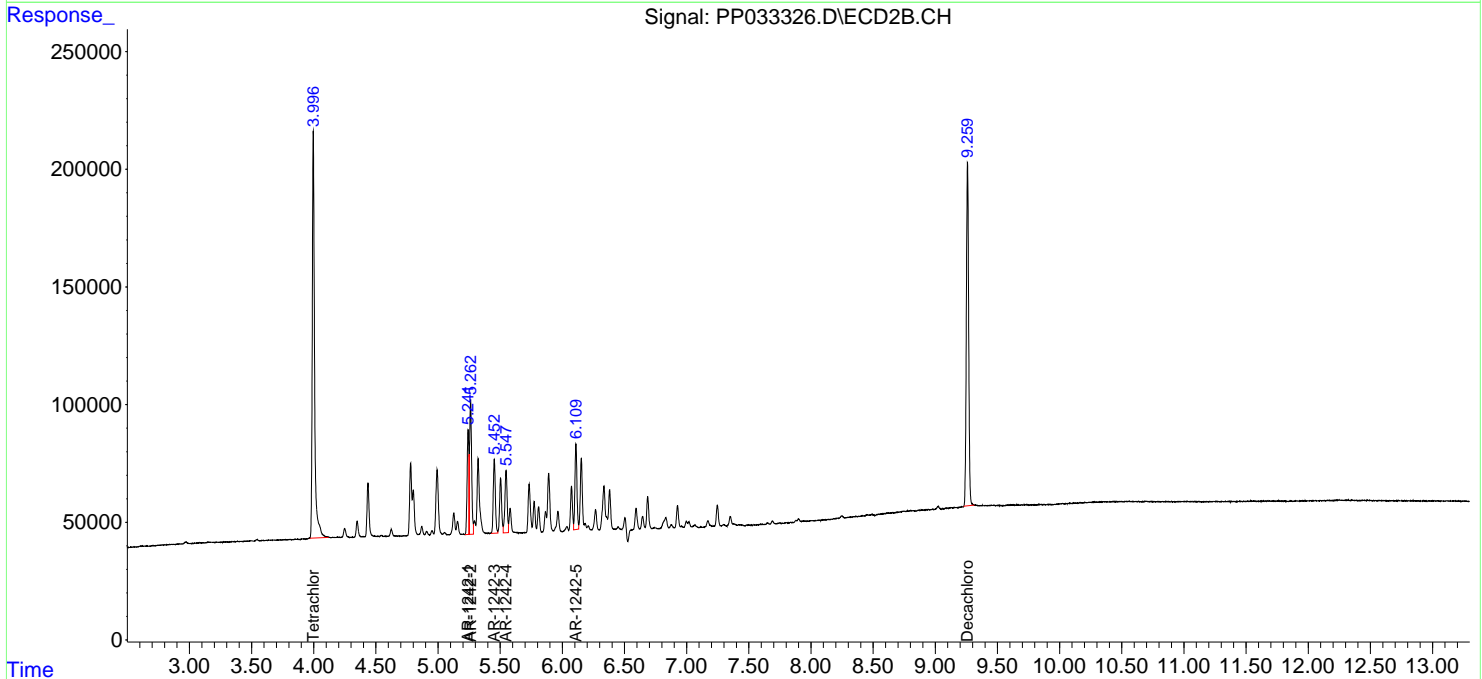
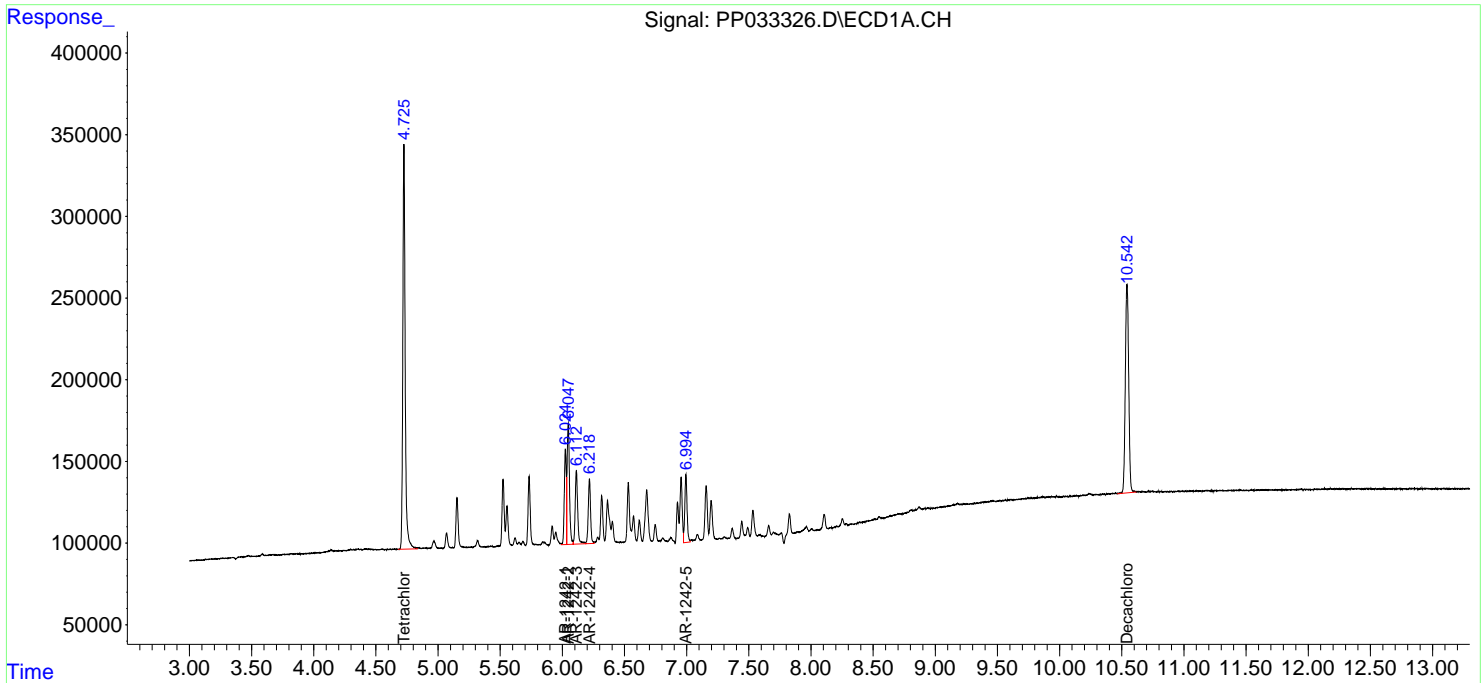
(f)=RT Delta > 1/2 Window (#)=Amounts differ by > 25% (m)=manual int.

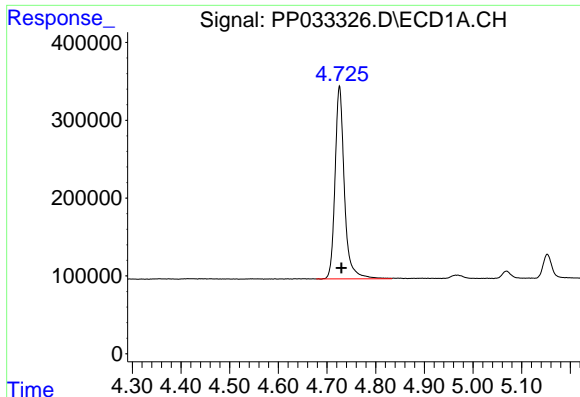
Data Path : Z:\pestpcbsrv\HPCHEM1\ECD_P\Data\PP021221\
 Data File : PP033326.D
 Signal(s) : Signal #1: ECD1A.CH Signal #2: ECD2B.CH
 Acq On : 12 Feb 2021 20:16
 Operator : DD\AJ
 Sample : AR1242CCC500
 Misc :
 ALS Vial : 4 Sample Multiplier: 1

Instrument :
 ECD_P
 ClientSampled :
 AR1242CCC500

Integration File signal 1: autoint1.e
 Integration File signal 2: autoint2.e
 Quant Time: Feb 13 00:09:42 2021
 Quant Method : Z:\pestpcbsrv\HPCHEM1\ECD_P\methods\PP020821.M
 Quant Title : GC EXTRACTABLES
 QLast Update : Tue Feb 09 04:00:57 2021
 Response via : Initial Calibration
 Integrator: ChemStation 6890 Scale Mode: Small noise peaks clipped

Volume Inj. : 2 µl
 Signal #1 Phase : ZB-MR1 Signal #2 Phase: ZB-MR2
 Signal #1 Info : 30Mx0.32mmx 0.50µ Signal #2 Info : 30M x 0.32mm x 0.25µm

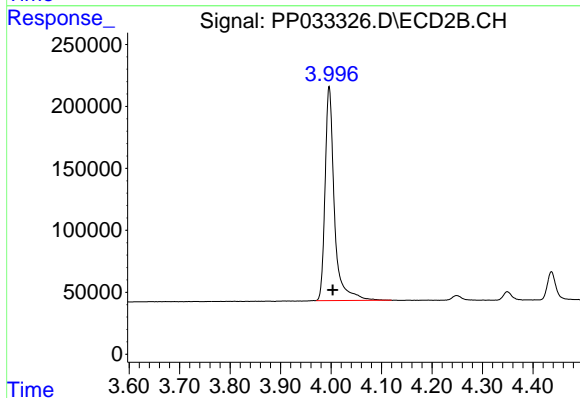




#1 Tetrachloro-m-xylene

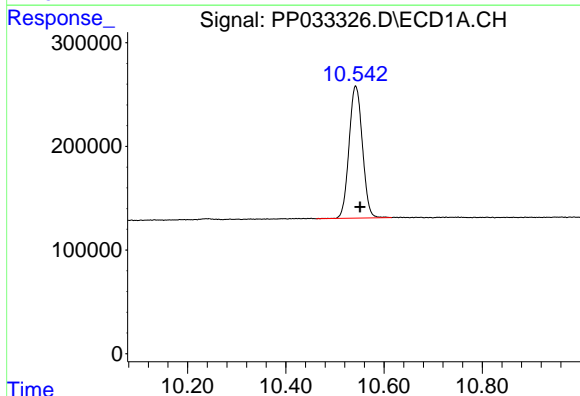
R.T.: 4.726 min
 Delta R.T.: -0.004 min
 Response: 3299055
 Conc: 53.80 ng/ml

Instrument :
 ECD_P
 ClientSampleId :
 AR1242CCC500



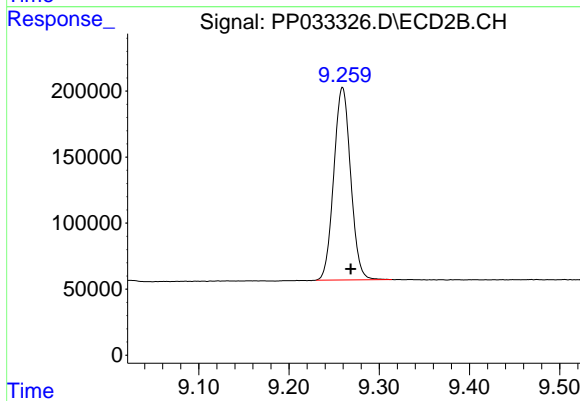
#1 Tetrachloro-m-xylene

R.T.: 3.996 min
 Delta R.T.: -0.007 min
 Response: 2216932
 Conc: 54.21 ng/ml



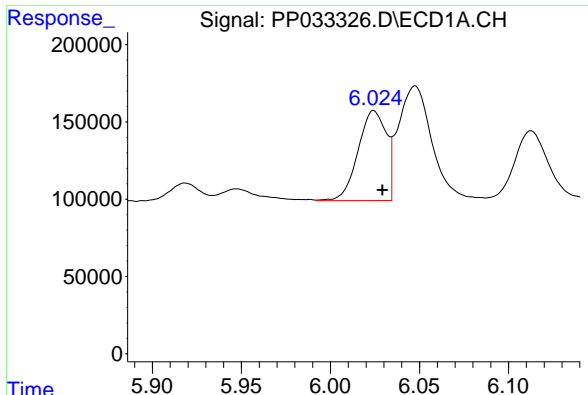
#2 Decachlorobiphenyl

R.T.: 10.542 min
 Delta R.T.: -0.009 min
 Response: 2404750
 Conc: 55.20 ng/ml



#2 Decachlorobiphenyl

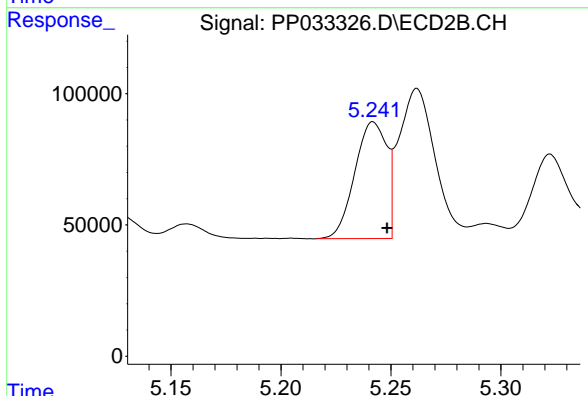
R.T.: 9.259 min
 Delta R.T.: -0.009 min
 Response: 1893287
 Conc: 56.52 ng/ml



#16 AR-1242-1

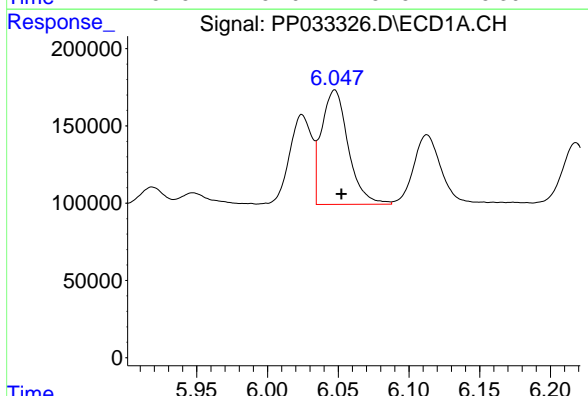
R.T.: 6.024 min
 Delta R.T.: -0.005 min
 Response: 642864
 Conc: 494.55 ng/ml

Instrument :
 ECD_P
 ClientSampleId :
 AR1242CCC500



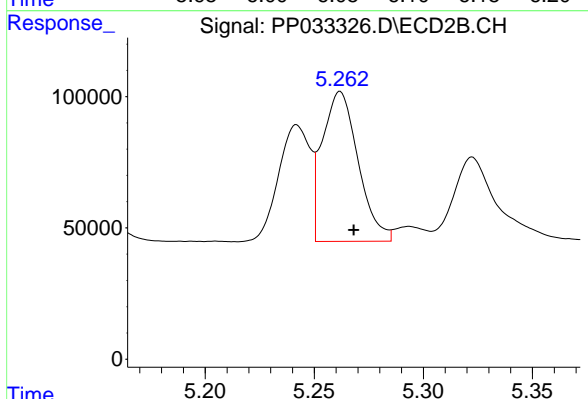
#16 AR-1242-1

R.T.: 5.242 min
 Delta R.T.: -0.006 min
 Response: 449524
 Conc: 519.36 ng/ml



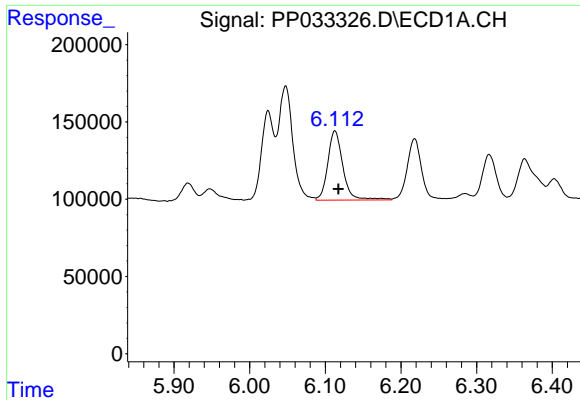
#17 AR-1242-2

R.T.: 6.048 min
 Delta R.T.: -0.005 min
 Response: 975585
 Conc: 495.14 ng/ml



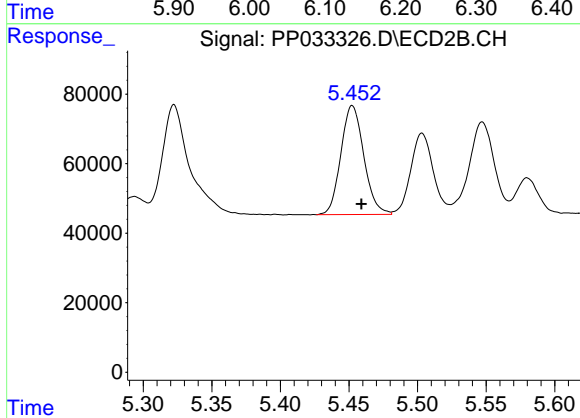
#17 AR-1242-2

R.T.: 5.262 min
 Delta R.T.: -0.006 min
 Response: 653903
 Conc: 509.52 ng/ml

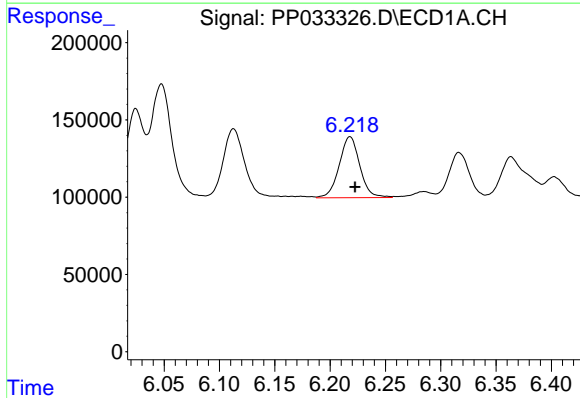


#18 AR-1242-3
 R.T.: 6.113 min
 Delta R.T.: -0.005 min
 Response: 624867
 Conc: 493.02 ng/ml

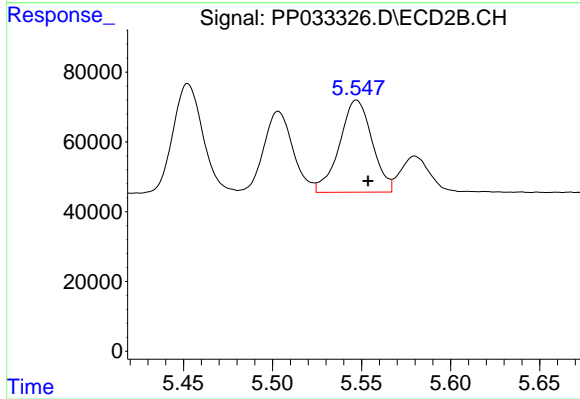
Instrument :
 ECD_P
 ClientSampleId :
 AR1242CCC500



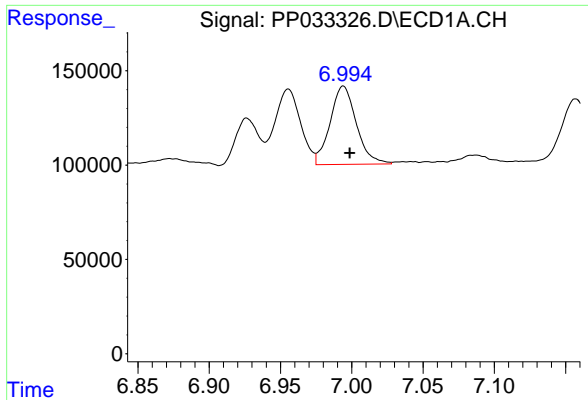
#18 AR-1242-3
 R.T.: 5.452 min
 Delta R.T.: -0.007 min
 Response: 365421
 Conc: 519.87 ng/ml



#19 AR-1242-4
 R.T.: 6.218 min
 Delta R.T.: -0.004 min
 Response: 510636
 Conc: 465.21 ng/ml



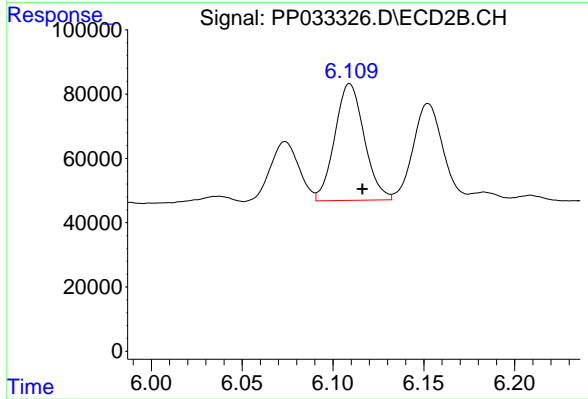
#19 AR-1242-4
 R.T.: 5.547 min
 Delta R.T.: -0.006 min
 Response: 336651
 Conc: 483.34 ng/ml



#20 AR-1242-5

R.T.: 6.994 min
Delta R.T.: -0.004 min
Response: 531357
Conc: 511.44 ng/ml

Instrument :
ECD_P
ClientSampleId :
AR1242CCC500



#20 AR-1242-5

R.T.: 6.109 min
Delta R.T.: -0.007 min
Response: 410378
Conc: 486.02 ng/ml