

Data Path : Z:\pestpcbsrv\HPCHEM1\ECD\_P\Data\PP021325\  
 Data File : PP069727.D  
 Signal(s) : Signal #1: ECD1A.ch Signal #2: ECD2B.ch  
 Acq On : 13 Feb 2025 16:47  
 Operator : YP\AJ  
 Sample : PB166969BS  
 Misc :  
 ALS Vial : 19 Sample Multiplier: 1

Instrument :  
 ECD\_P  
 ClientSampleId :

Integration File signal 1: autoint1.e  
 Integration File signal 2: autoint2.e  
 Quant Time: Feb 13 18:03:09 2025  
 Quant Method : Z:\pestpcbsrv\HPCHEM1\ECD\_P\methods\PP012825.M  
 Quant Title : GC EXTRACTABLES  
 QLast Update : Wed Jan 29 00:13:21 2025  
 Response via : Initial Calibration  
 Integrator: ChemStation

Volume Inj. : 2 µl  
 Signal #1 Phase : ZB-MR1 Signal #2 Phase: ZB-MR2  
 Signal #1 Info : 30Mx0.32mmx 0.50µ Signal #2 Info : 30M x 0.32mm x 0.25µm

Compound	RT#1	RT#2	Resp#1	Resp#2	ng/ml	ng/ml
-----						
System Monitoring Compounds						
1) SA Tetrachlo...	4.534	3.838	31447230	19201861	21.968	21.514
2) SA Decachlor...	10.269	8.900	23074688	22912645	21.113	20.485
Target Compounds						
3) L1 AR-1016-1	5.688	4.929	19236258	13029063	415.174	399.480
4) L1 AR-1016-2	5.709	4.948	27488836	17910696	404.979	398.384
5) L1 AR-1016-3	5.772	5.125	17046648	10002704	400.188	401.974
6) L1 AR-1016-4	5.869	5.167	14086459	7887856	402.465	390.560
7) L1 AR-1016-5	6.162	5.383	12720738	10274618	384.794	383.040
8) L2 AR-1221-1	4.732	4.048	1854248	1294648	97.492	105.102
9) L2 AR-1221-2	4.821	4.137	2410909	1768929	176.075	182.677
10) L2 AR-1221-3	4.897	4.213	9766701	7034432	232.854	241.119
11) L3 AR-1232-1	4.897	4.213	9766701	7034432	293.351	299.599
12) L3 AR-1232-2	5.423	4.948	13330994	17910696	815.750	759.837
13) L3 AR-1232-3	5.709	5.125	27488836	10002704	800.048	772.574
14) L3 AR-1232-4	5.869	5.210	14086459	9620118	790.655	867.748
15) L3 AR-1232-5	5.959	5.383	11550604	10274618	1007.694	841.470
16) L4 AR-1242-1	5.688	4.929	19236258	13029063	461.243	451.895
17) L4 AR-1242-2	5.709	4.948	27488836	17910696	465.984	454.612
18) L4 AR-1242-3	5.772	5.125	17046648	10002704	459.495	444.484
19) L4 AR-1242-4	5.869	5.210	14086459	9620118	429.535	445.742
20) L4 AR-1242-5	6.600	5.737	2317125	8792146	71.112	305.619 #
21) L5 AR-1248-1	5.688	4.929	19236258	13029063	592.997	591.946
22) L5 AR-1248-2	5.959	5.167	11550604	7887856	272.122	262.364
23) L5 AR-1248-3	6.162	5.210	12720738	9620118	270.728	310.484
24) L5 AR-1248-4	6.537	5.383	12520653	10274618	227.147	278.116
25) L5 AR-1248-5	6.600	5.777	2317125	1584809	43.405	42.387
26) L6 AR-1254-1	6.537	5.737	12520653	8792146	216.382	159.695 #
27) L6 AR-1254-2	6.753	5.884	10969159	9147093	136.701	189.111 #
28) L6 AR-1254-3	7.117	6.305	5993546	19273249	71.108	253.943 #
29) L6 AR-1254-4	7.400	6.519	4049681	1745822	59.390	34.065 #
30) L6 AR-1254-5	7.815	6.936	34744928	27664975	510.608	415.637
31) L7 AR-1260-1	7.281	6.421	23249882	20627979	397.867	427.704
32) L7 AR-1260-2	7.535	6.609	29868550	26021246	383.851	424.465
33) L7 AR-1260-3	7.894	6.763	20845755	23159400	333.429	384.986
34) L7 AR-1260-4	8.119	7.235	22473529	17056910	340.628	367.070
35) L7 AR-1260-5	8.440	7.476	43653274	40706294	333.420	366.245
36) L8 AR-1262-1	8.119	6.975	22473529	19488220	284.409	274.431
37) L8 AR-1262-2	8.440	7.235	43653274	17056910	285.459	279.716
38) L8 AR-1262-3	8.766	7.760	27636321	8941270	260.034	170.964 #
39) L8 AR-1262-4	8.829	7.823	15755451	29023550	192.626	313.984 #
40) L8 AR-1262-5	9.504	8.326	10941462	10348629	193.277	216.534
41) L9 AR-1268-1	8.766	7.760	27636321	8941270	156.510	61.612 #

Data Path : Z:\pestpcbsrv\HPCHEM1\ECD\_P\Data\PP021325\  
 Data File : PP069727.D  
 Signal(s) : Signal #1: ECD1A.ch Signal #2: ECD2B.ch  
 Acq On : 13 Feb 2025 16:47  
 Operator : YP\AJ  
 Sample : PB166969BS  
 Misc :  
 ALS Vial : 19 Sample Multiplier: 1

Instrument :  
 ECD\_P  
 ClientSampleId :

Integration File signal 1: autoint1.e  
 Integration File signal 2: autoint2.e  
 Quant Time: Feb 13 18:03:09 2025  
 Quant Method : Z:\pestpcbsrv\HPCHEM1\ECD\_P\methods\PP012825.M  
 Quant Title : GC EXTRACTABLES  
 QLast Update : Wed Jan 29 00:13:21 2025  
 Response via : Initial Calibration  
 Integrator: ChemStation

Volume Inj. : 2 µl  
 Signal #1 Phase : ZB-MR1 Signal #2 Phase: ZB-MR2  
 Signal #1 Info : 30Mx0.32mmx 0.50µ Signal #2 Info : 30M x 0.32mm x 0.25µm

	Compound	RT#1	RT#2	Resp#1	Resp#2	ng/ml	ng/ml
42)	L9 AR-1268-2	8.829	7.823	15755451	29023550	100.116	218.525 #
43)	L9 AR-1268-3	9.084	8.032	846929	755989	6.333	6.647
44)	L9 AR-1268-4	9.504	8.326	10941462	10348629	186.330	198.714
45)	L9 AR-1268-5	9.924	8.632	3536373	3497187	9.284	9.819

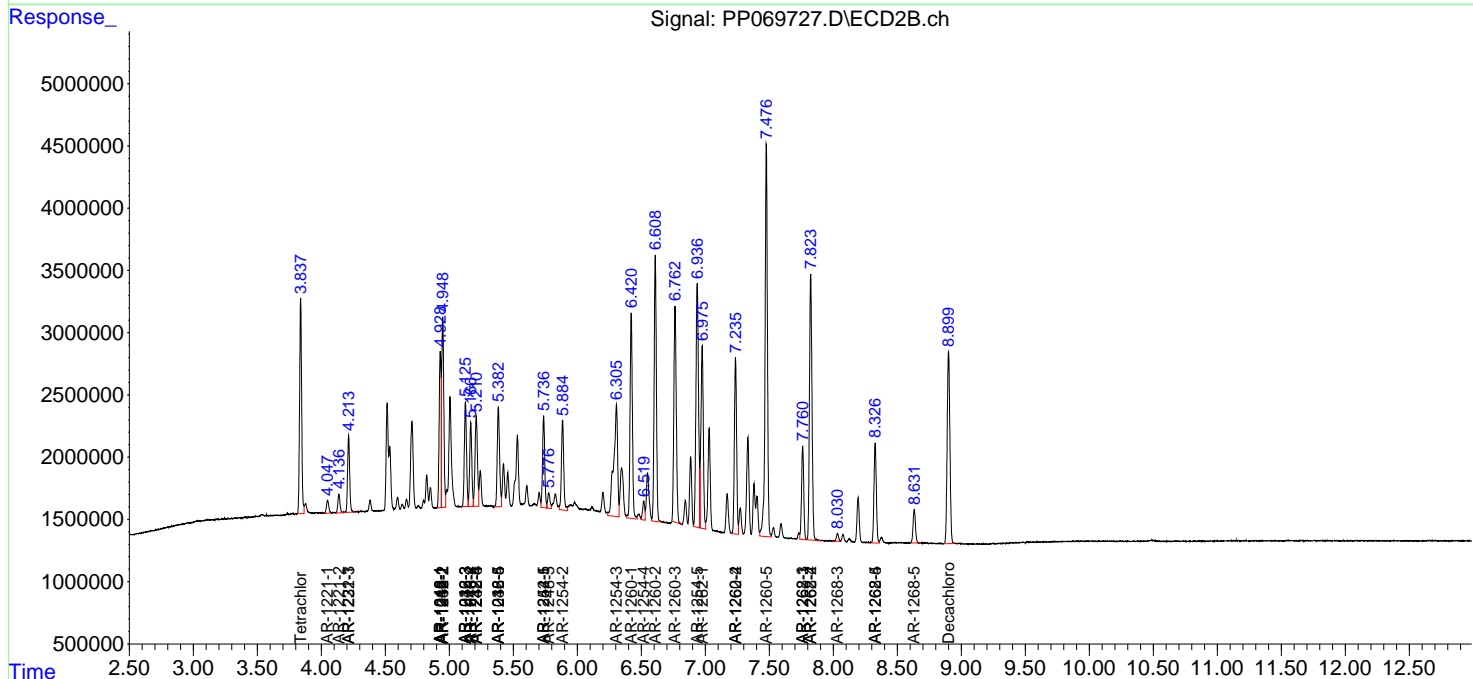
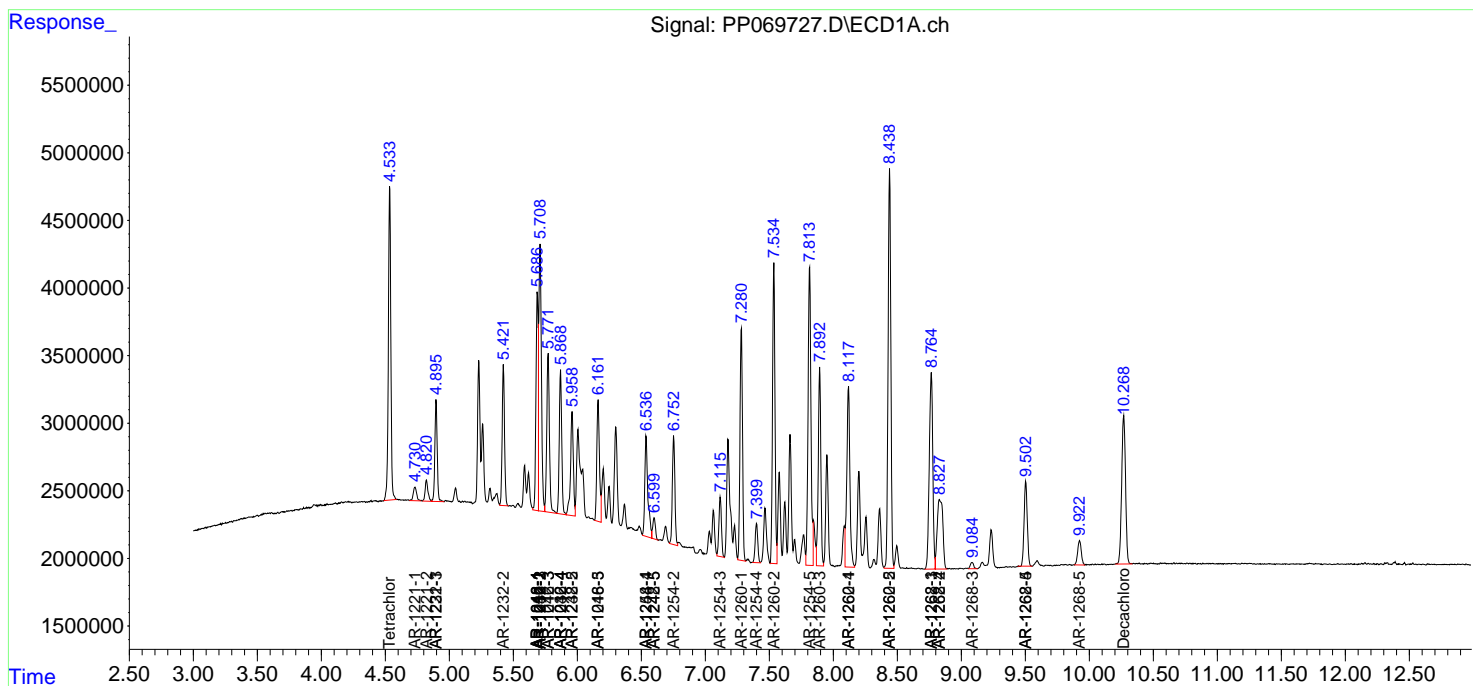
(f)=RT Delta > 1/2 Window (#)=Amounts differ by > 25% (m)=manual int.

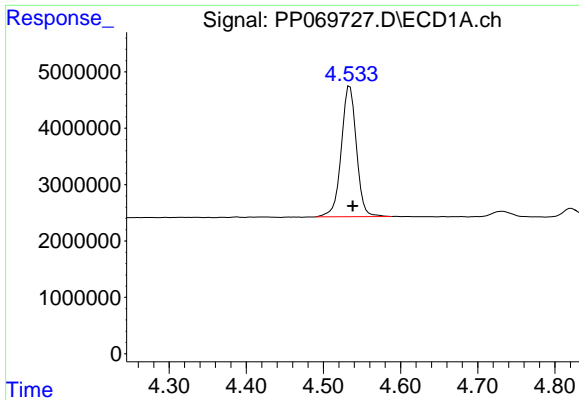
Data Path : Z:\pestpcbsrv\HPCHEM1\ECD\_P\Data\PP021325\  
 Data File : PP069727.D  
 Signal(s) : Signal #1: ECD1A.ch Signal #2: ECD2B.ch  
 Acq On : 13 Feb 2025 16:47  
 Operator : YP\AJ  
 Sample : PB166969BS  
 Misc :  
 ALS Vial : 19 Sample Multiplier: 1

Instrument :  
 ECD\_P  
 ClientSampleId :

Integration File signal 1: autoint1.e  
 Integration File signal 2: autoint2.e  
 Quant Time: Feb 13 18:03:09 2025  
 Quant Method : Z:\pestpcbsrv\HPCHEM1\ECD\_P\methods\PP012825.M  
 Quant Title : GC EXTRACTABLES  
 QLast Update : Wed Jan 29 00:13:21 2025  
 Response via : Initial Calibration  
 Integrator: ChemStation

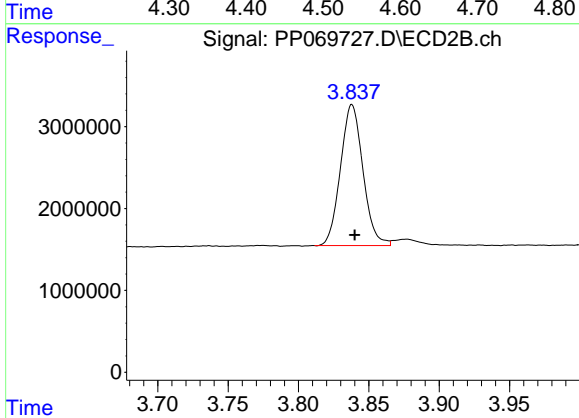
Volume Inj. : 2 µl  
 Signal #1 Phase : ZB-MR1 Signal #2 Phase: ZB-MR2  
 Signal #1 Info : 30Mx0.32mmx 0.50µ Signal #2 Info : 30M x 0.32mm x 0.25µm



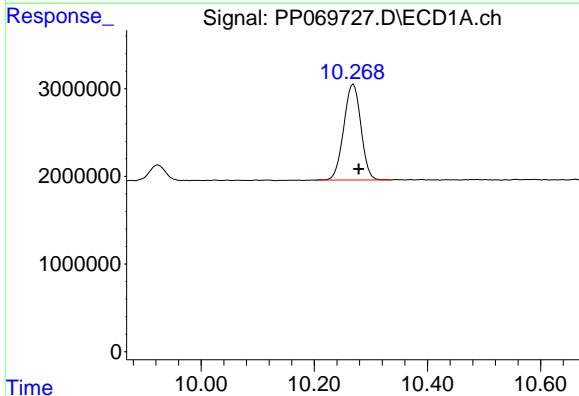


#1 Tetrachloro-m-xylene  
 R.T.: 4.534 min  
 Delta R.T.: -0.004 min  
 Response: 31447230  
 Conc: 21.97 ng/ml

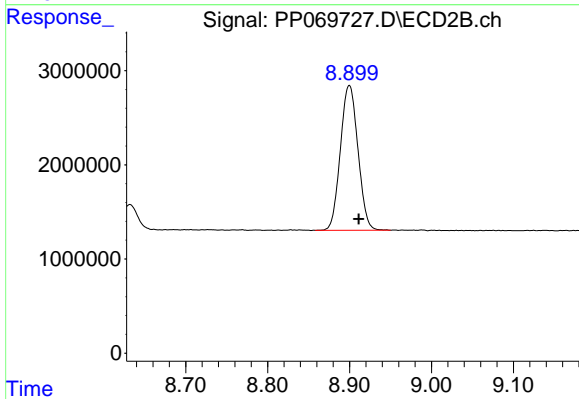
Instrument :  
 ECD\_P  
 ClientSampleId :



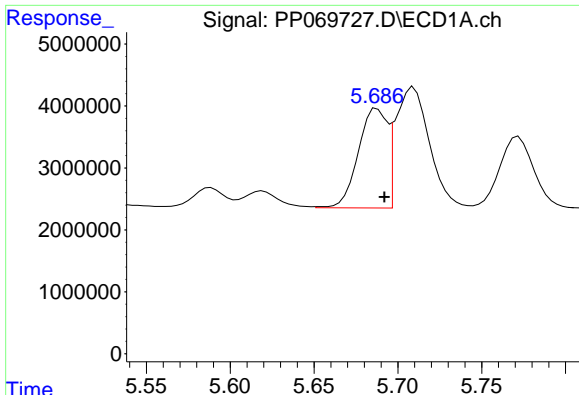
#1 Tetrachloro-m-xylene  
 R.T.: 3.838 min  
 Delta R.T.: -0.002 min  
 Response: 19201861  
 Conc: 21.51 ng/ml



#2 Decachlorobiphenyl  
 R.T.: 10.269 min  
 Delta R.T.: -0.009 min  
 Response: 23074688  
 Conc: 21.11 ng/ml



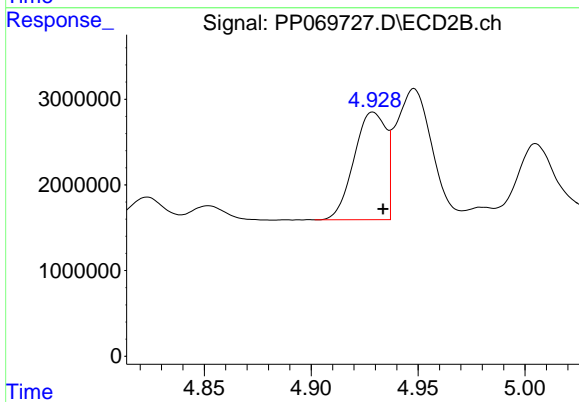
#2 Decachlorobiphenyl  
 R.T.: 8.900 min  
 Delta R.T.: -0.011 min  
 Response: 22912645  
 Conc: 20.49 ng/ml



#3 AR-1016-1

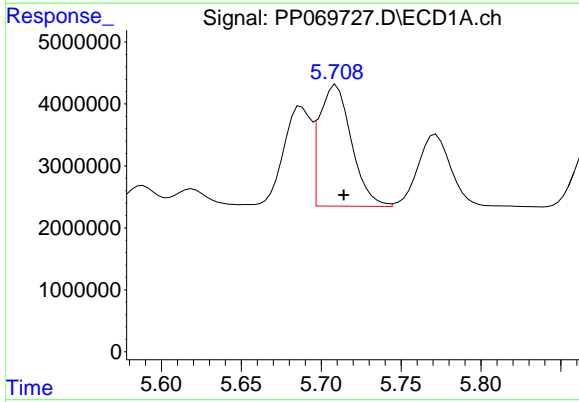
R.T.: 5.688 min  
 Delta R.T.: -0.004 min  
 Response: 19236258  
 Conc: 415.17 ng/ml

Instrument :  
 ECD\_P  
 ClientSampleId :



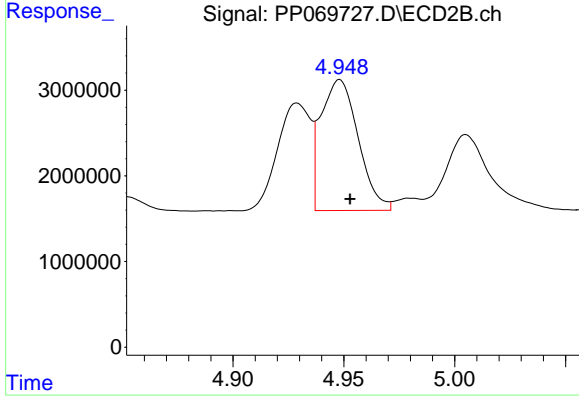
#3 AR-1016-1

R.T.: 4.929 min  
 Delta R.T.: -0.005 min  
 Response: 13029063  
 Conc: 399.48 ng/ml



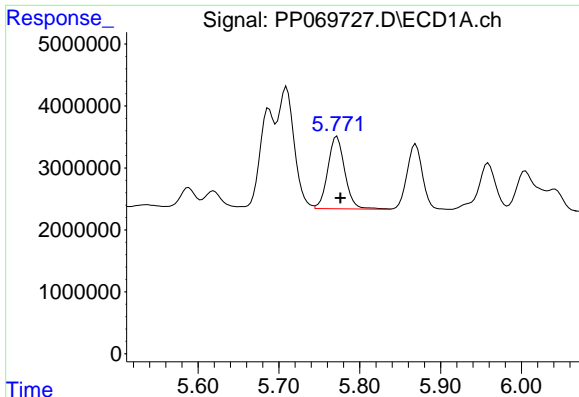
#4 AR-1016-2

R.T.: 5.709 min  
 Delta R.T.: -0.005 min  
 Response: 27488836  
 Conc: 404.98 ng/ml



#4 AR-1016-2

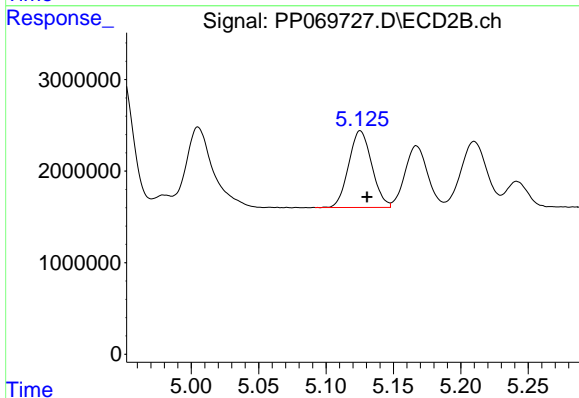
R.T.: 4.948 min  
 Delta R.T.: -0.005 min  
 Response: 17910696  
 Conc: 398.38 ng/ml



#5 AR-1016-3

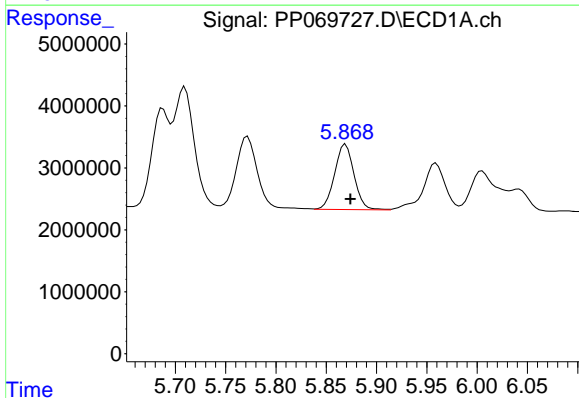
R.T.: 5.772 min  
 Delta R.T.: -0.004 min  
 Response: 17046648  
 Conc: 400.19 ng/ml

Instrument :  
 ECD\_P  
 ClientSampleId :



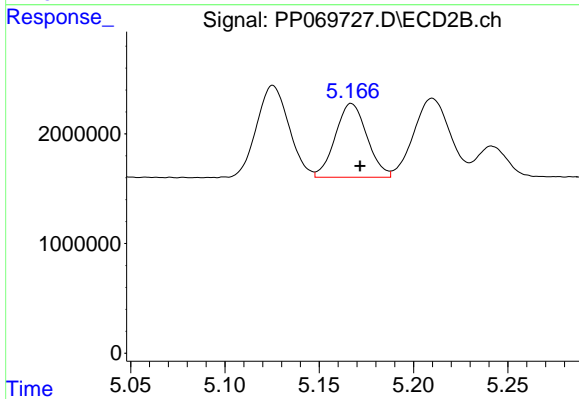
#5 AR-1016-3

R.T.: 5.125 min  
 Delta R.T.: -0.005 min  
 Response: 10002704  
 Conc: 401.97 ng/ml



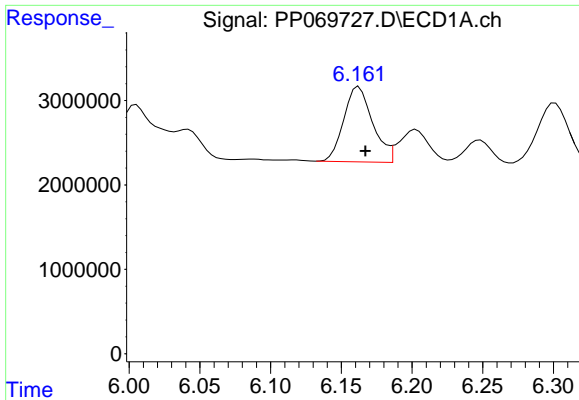
#6 AR-1016-4

R.T.: 5.869 min  
 Delta R.T.: -0.005 min  
 Response: 14086459  
 Conc: 402.46 ng/ml



#6 AR-1016-4

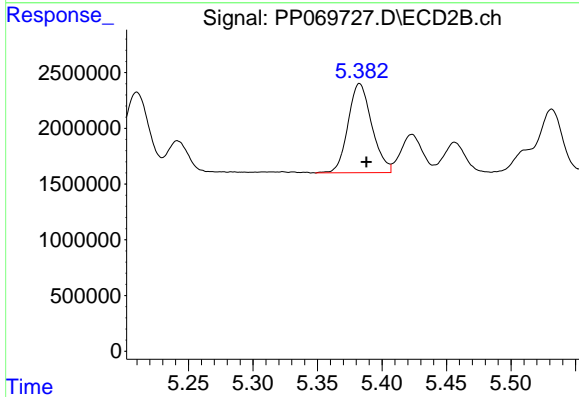
R.T.: 5.167 min  
 Delta R.T.: -0.004 min  
 Response: 7887856  
 Conc: 390.56 ng/ml



#7 AR-1016-5

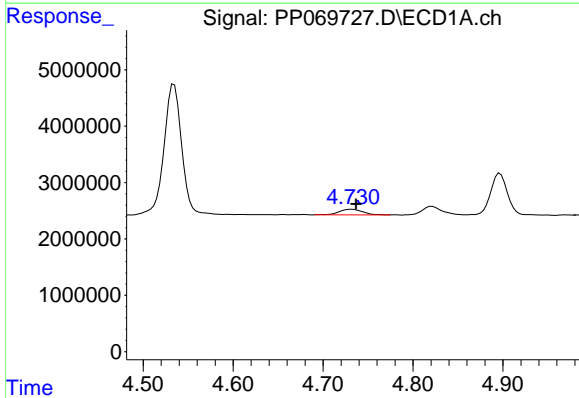
R.T.: 6.162 min  
 Delta R.T.: -0.005 min  
 Response: 12720738  
 Conc: 384.79 ng/ml

Instrument :  
 ECD\_P  
 ClientSampleId :



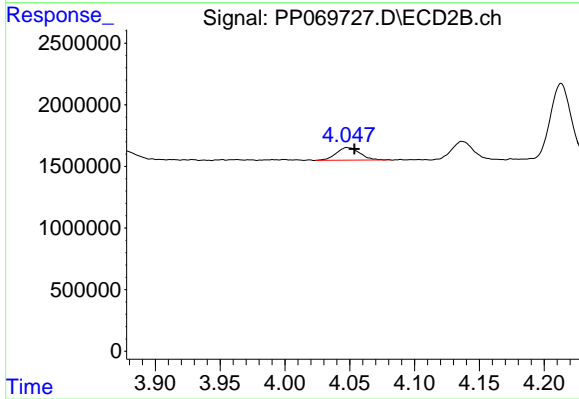
#7 AR-1016-5

R.T.: 5.383 min  
 Delta R.T.: -0.005 min  
 Response: 10274618  
 Conc: 383.04 ng/ml



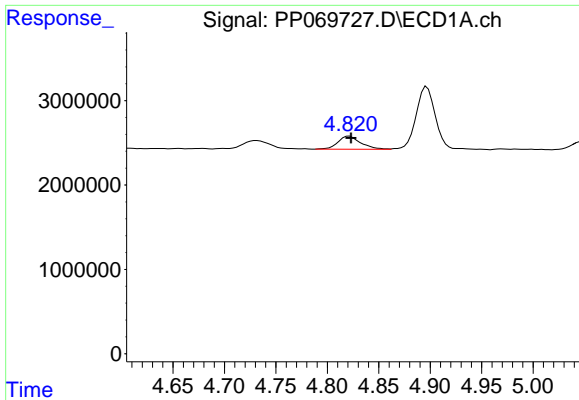
#8 AR-1221-1

R.T.: 4.732 min  
 Delta R.T.: -0.005 min  
 Response: 1854248  
 Conc: 97.49 ng/ml



#8 AR-1221-1

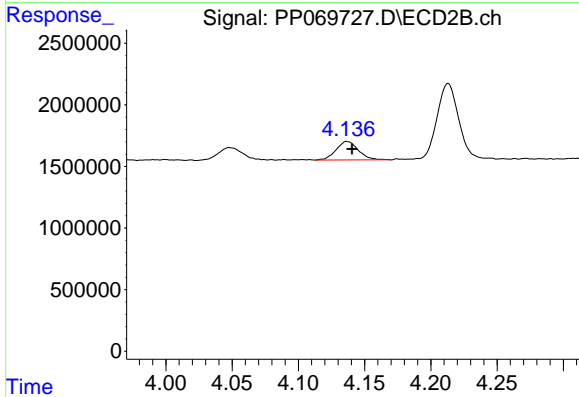
R.T.: 4.048 min  
 Delta R.T.: -0.005 min  
 Response: 1294648  
 Conc: 105.10 ng/ml



#9 AR-1221-2

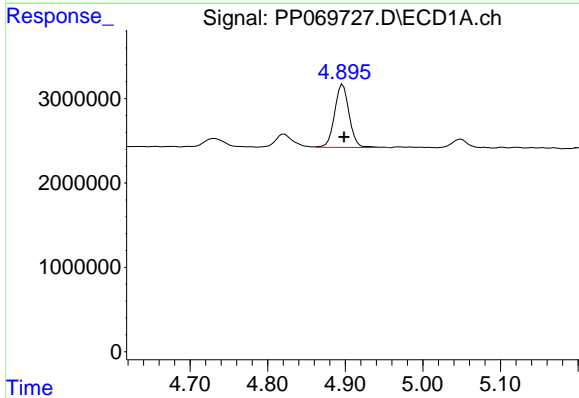
R.T.: 4.821 min  
 Delta R.T.: -0.002 min  
 Response: 2410909  
 Conc: 176.08 ng/ml

Instrument :  
 ECD\_P  
 ClientSampleId :



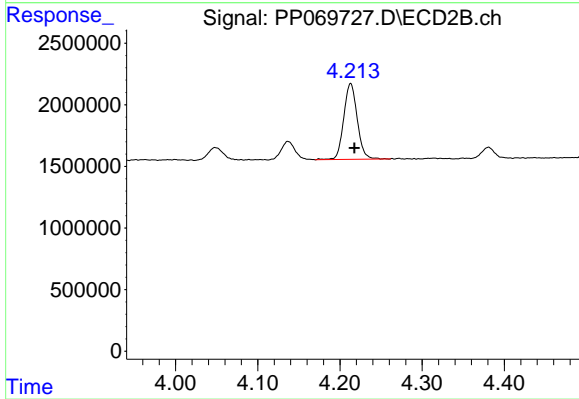
#9 AR-1221-2

R.T.: 4.137 min  
 Delta R.T.: -0.004 min  
 Response: 1768929  
 Conc: 182.68 ng/ml



#10 AR-1221-3

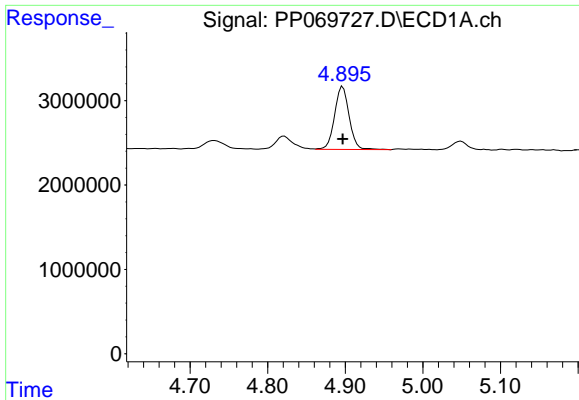
R.T.: 4.897 min  
 Delta R.T.: -0.002 min  
 Response: 9766701  
 Conc: 232.85 ng/ml



#10 AR-1221-3

R.T.: 4.213 min  
 Delta R.T.: -0.005 min  
 Response: 7034432  
 Conc: 241.12 ng/ml

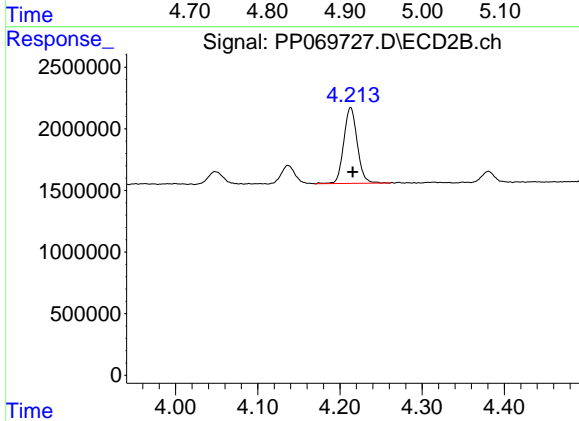




#11 AR-1232-1

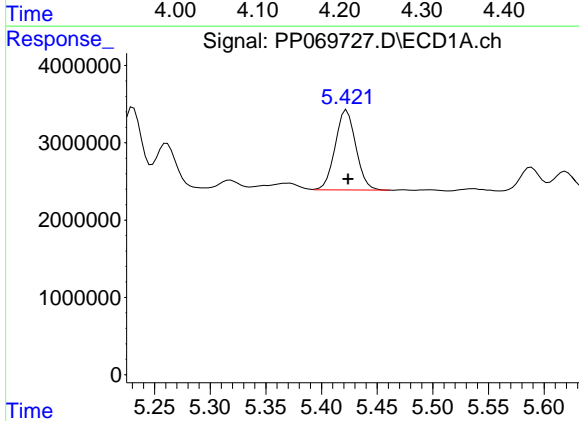
R.T.: 4.897 min  
 Delta R.T.: 0.000 min  
 Response: 9766701  
 Conc: 293.35 ng/ml

Instrument :  
 ECD\_P  
 ClientSampleId :



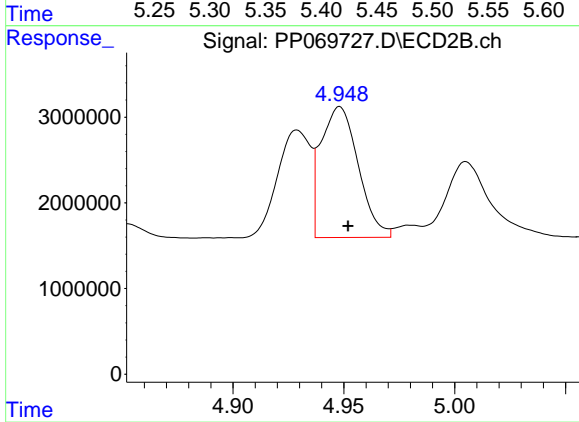
#11 AR-1232-1

R.T.: 4.213 min  
 Delta R.T.: -0.002 min  
 Response: 7034432  
 Conc: 299.60 ng/ml



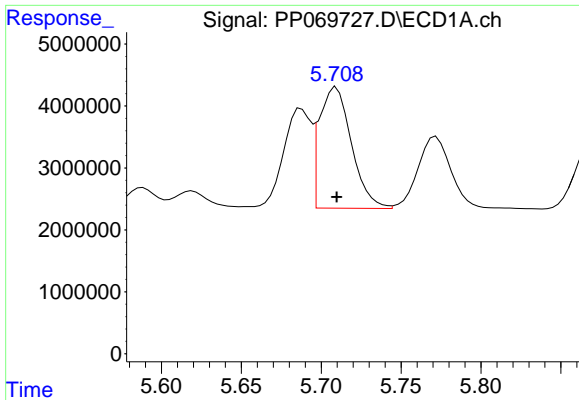
#12 AR-1232-2

R.T.: 5.423 min  
 Delta R.T.: 0.000 min  
 Response: 13330994  
 Conc: 815.75 ng/ml



#12 AR-1232-2

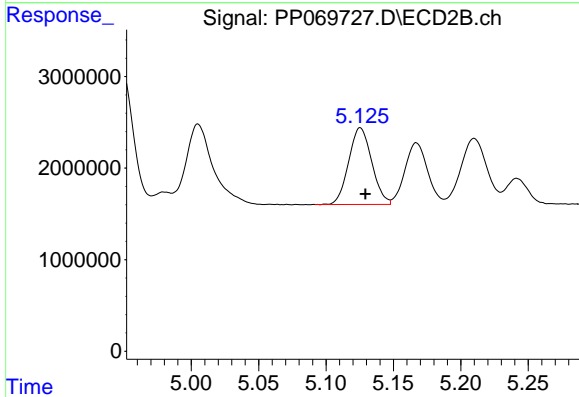
R.T.: 4.948 min  
 Delta R.T.: -0.004 min  
 Response: 17910696  
 Conc: 759.84 ng/ml



#13 AR-1232-3

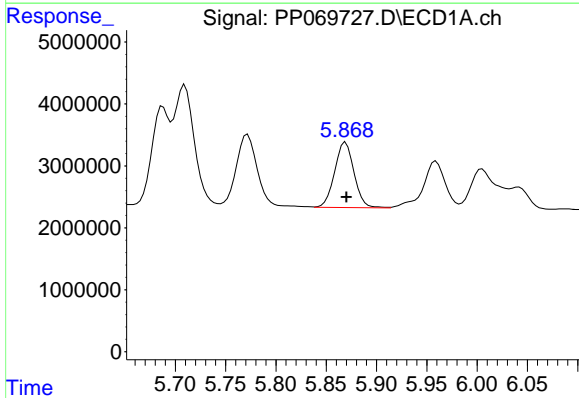
R.T.: 5.709 min  
 Delta R.T.: 0.000 min  
 Response: 27488836  
 Conc: 800.05 ng/ml

Instrument :  
 ECD\_P  
 ClientSampleId :



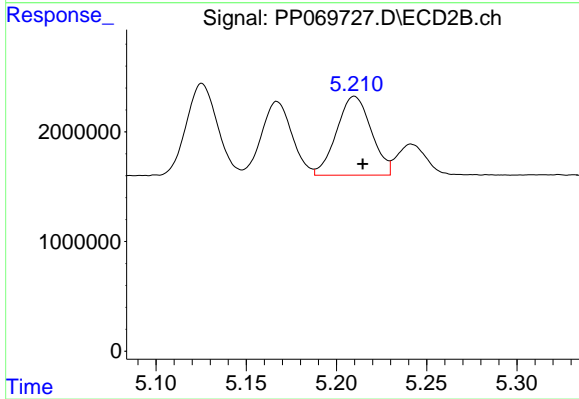
#13 AR-1232-3

R.T.: 5.125 min  
 Delta R.T.: -0.004 min  
 Response: 10002704  
 Conc: 772.57 ng/ml



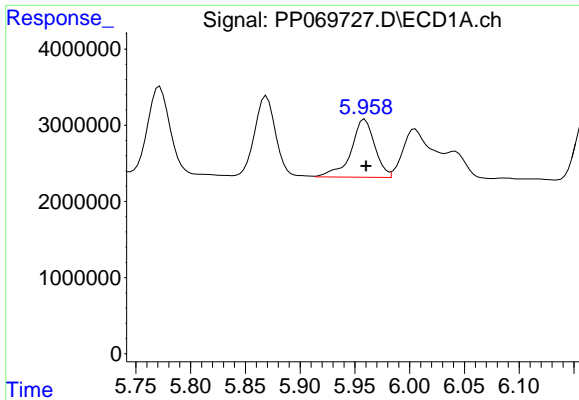
#14 AR-1232-4

R.T.: 5.869 min  
 Delta R.T.: 0.000 min  
 Response: 14086459  
 Conc: 790.65 ng/ml



#14 AR-1232-4

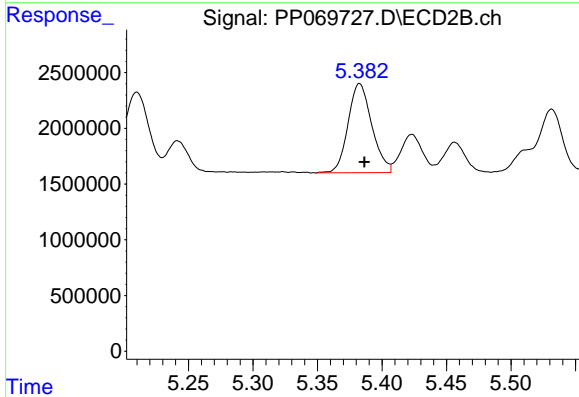
R.T.: 5.210 min  
 Delta R.T.: -0.005 min  
 Response: 9620118  
 Conc: 867.75 ng/ml



#15 AR-1232-5

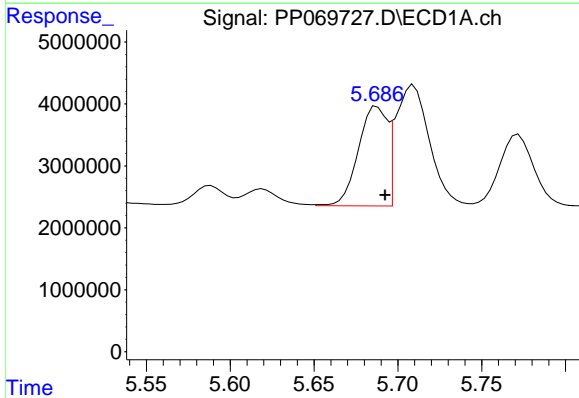
R.T.: 5.959 min  
 Delta R.T.: -0.001 min  
 Response: 11550604  
 Conc: 1007.69 ng/ml

Instrument :  
 ECD\_P  
 ClientSampleId :



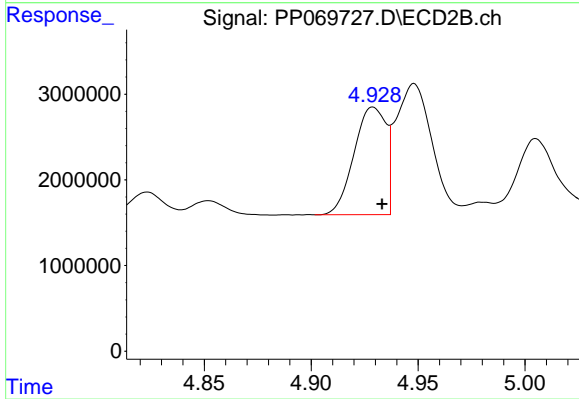
#15 AR-1232-5

R.T.: 5.383 min  
 Delta R.T.: -0.004 min  
 Response: 10274618  
 Conc: 841.47 ng/ml



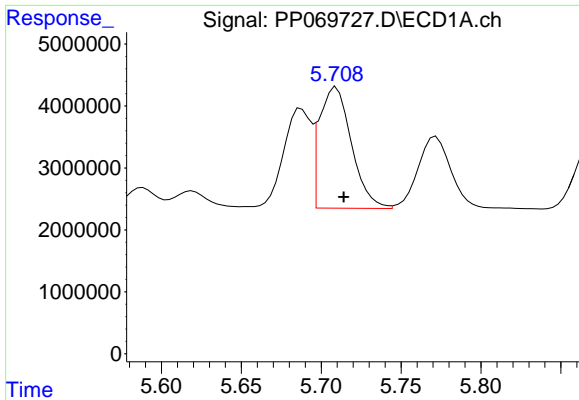
#16 AR-1242-1

R.T.: 5.688 min  
 Delta R.T.: -0.005 min  
 Response: 19236258  
 Conc: 461.24 ng/ml



#16 AR-1242-1

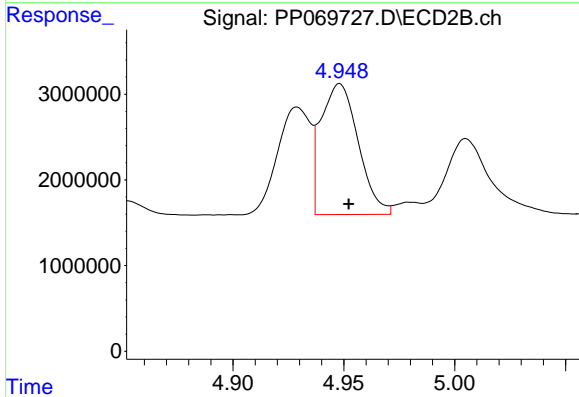
R.T.: 4.929 min  
 Delta R.T.: -0.004 min  
 Response: 13029063  
 Conc: 451.90 ng/ml



#17 AR-1242-2

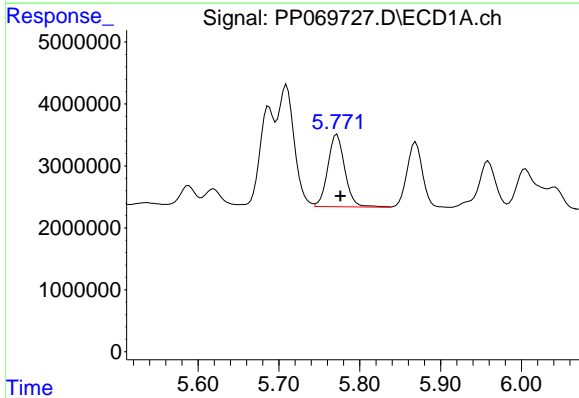
R.T.: 5.709 min  
 Delta R.T.: -0.005 min  
 Response: 27488836  
 Conc: 465.98 ng/ml

Instrument :  
 ECD\_P  
 ClientSampleId :



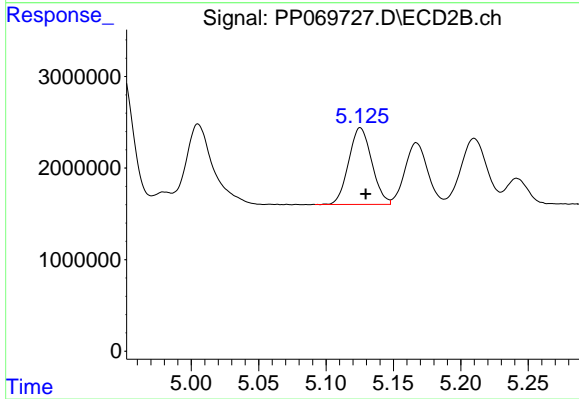
#17 AR-1242-2

R.T.: 4.948 min  
 Delta R.T.: -0.004 min  
 Response: 17910696  
 Conc: 454.61 ng/ml



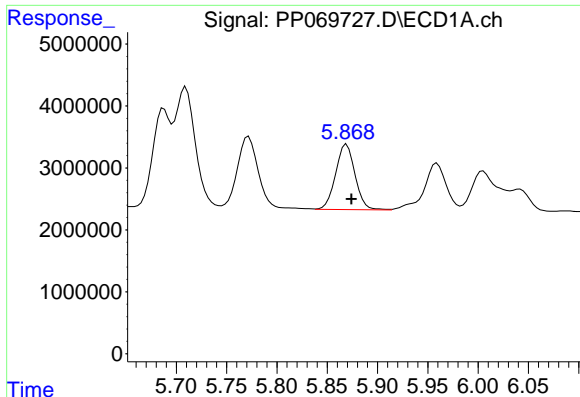
#18 AR-1242-3

R.T.: 5.772 min  
 Delta R.T.: -0.004 min  
 Response: 17046648  
 Conc: 459.50 ng/ml



#18 AR-1242-3

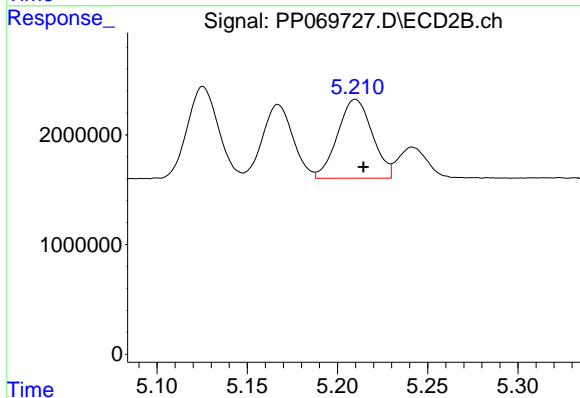
R.T.: 5.125 min  
 Delta R.T.: -0.004 min  
 Response: 10002704  
 Conc: 444.48 ng/ml



#19 AR-1242-4

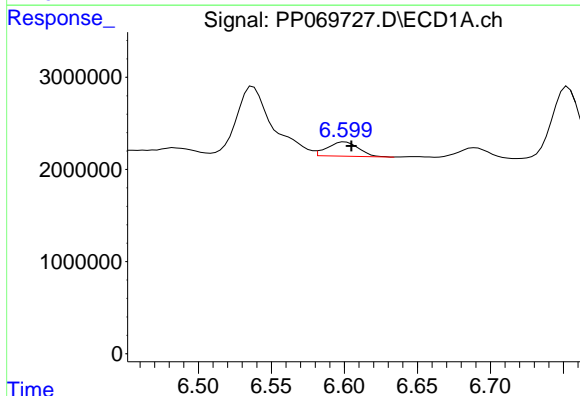
R.T.: 5.869 min  
 Delta R.T.: -0.005 min  
 Response: 14086459  
 Conc: 429.54 ng/ml

Instrument :  
 ECD\_P  
 ClientSampleId :



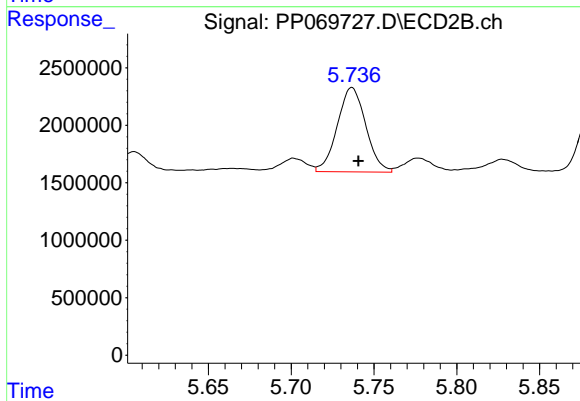
#19 AR-1242-4

R.T.: 5.210 min  
 Delta R.T.: -0.004 min  
 Response: 9620118  
 Conc: 445.74 ng/ml



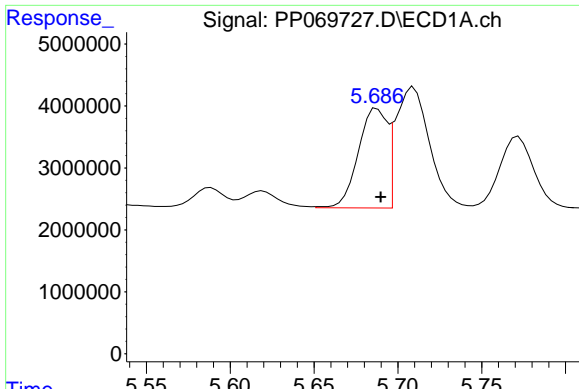
#20 AR-1242-5

R.T.: 6.600 min  
 Delta R.T.: -0.004 min  
 Response: 2317125  
 Conc: 71.11 ng/ml



#20 AR-1242-5

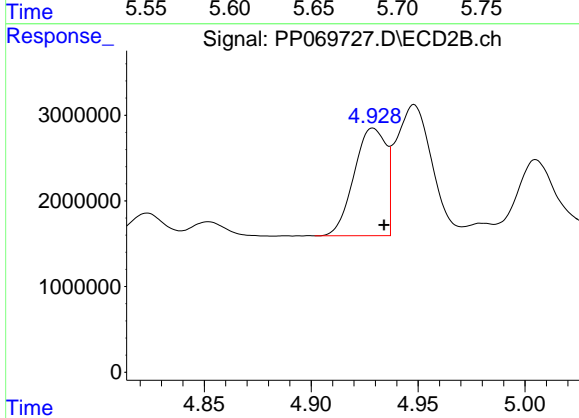
R.T.: 5.737 min  
 Delta R.T.: -0.004 min  
 Response: 8792146  
 Conc: 305.62 ng/ml



#21 AR-1248-1

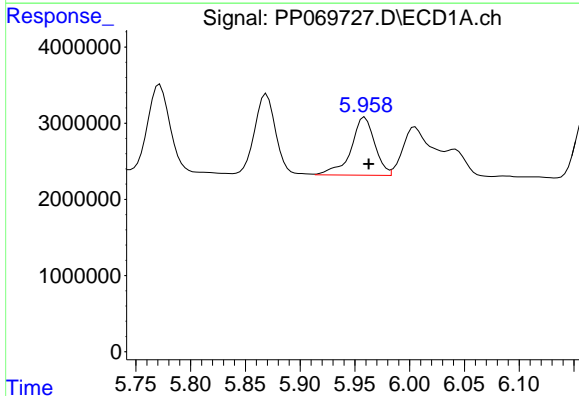
R.T.: 5.688 min  
 Delta R.T.: -0.002 min  
 Response: 19236258  
 Conc: 593.00 ng/ml

Instrument :  
 ECD\_P  
 ClientSampleId :



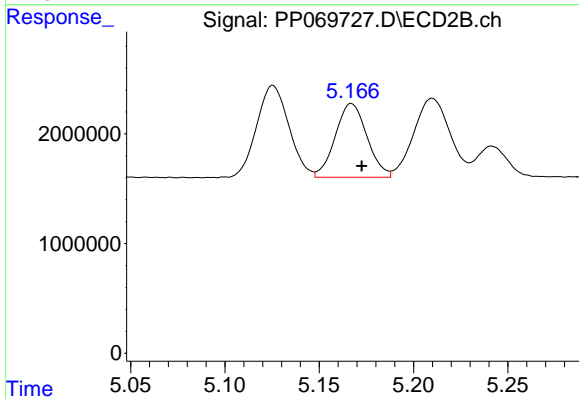
#21 AR-1248-1

R.T.: 4.929 min  
 Delta R.T.: -0.005 min  
 Response: 13029063  
 Conc: 591.95 ng/ml



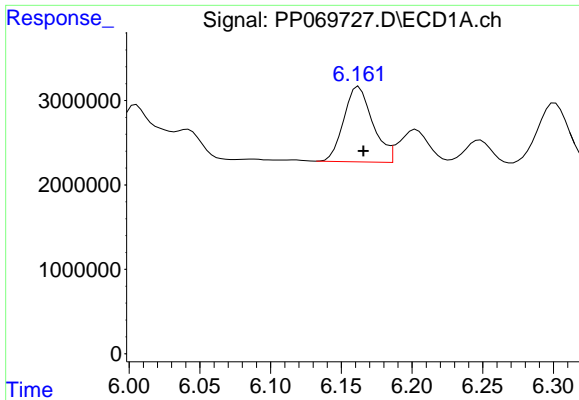
#22 AR-1248-2

R.T.: 5.959 min  
 Delta R.T.: -0.004 min  
 Response: 11550604  
 Conc: 272.12 ng/ml



#22 AR-1248-2

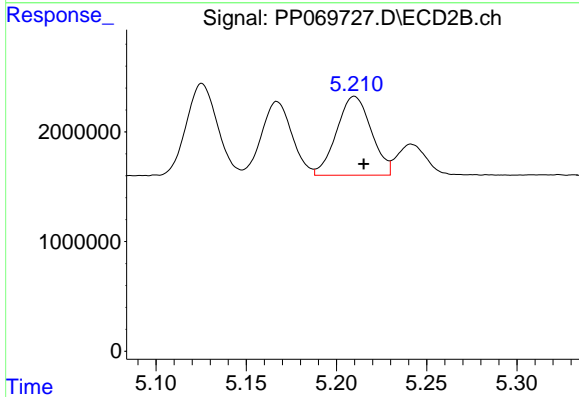
R.T.: 5.167 min  
 Delta R.T.: -0.005 min  
 Response: 7887856  
 Conc: 262.36 ng/ml



#23 AR-1248-3

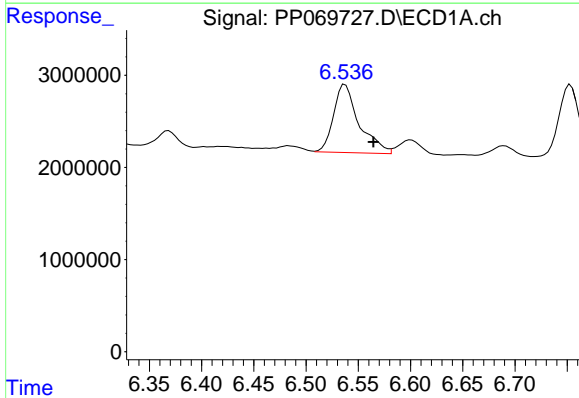
R.T.: 6.162 min  
 Delta R.T.: -0.003 min  
 Response: 12720738  
 Conc: 270.73 ng/ml

Instrument :  
 ECD\_P  
 ClientSampleId :



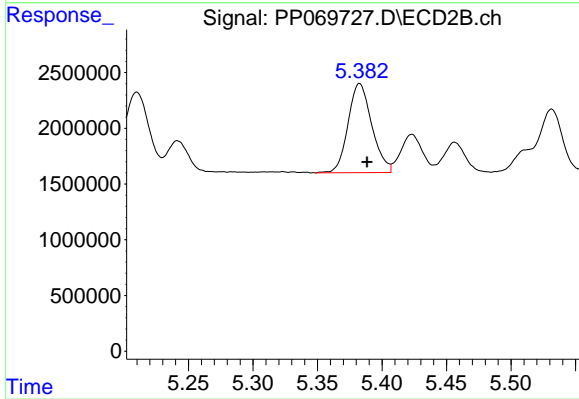
#23 AR-1248-3

R.T.: 5.210 min  
 Delta R.T.: -0.005 min  
 Response: 9620118  
 Conc: 310.48 ng/ml



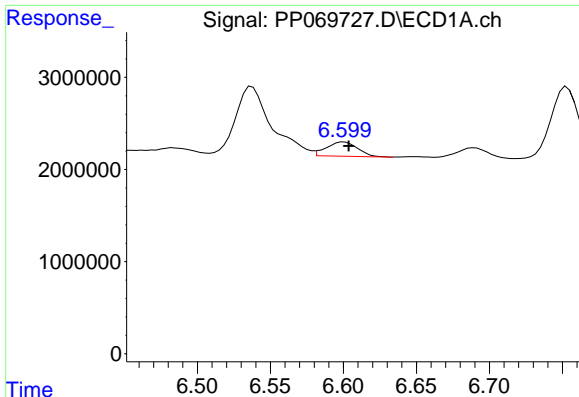
#24 AR-1248-4

R.T.: 6.537 min  
 Delta R.T.: -0.027 min  
 Response: 12520653  
 Conc: 227.15 ng/ml



#24 AR-1248-4

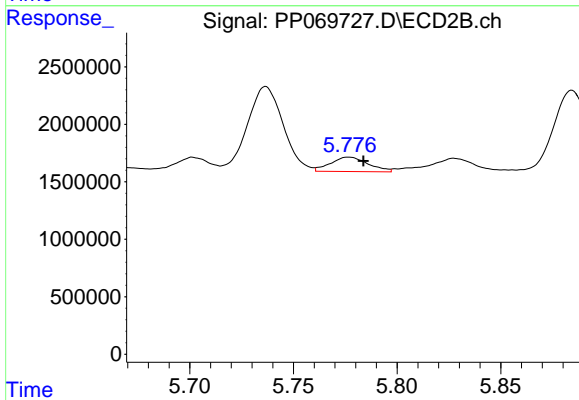
R.T.: 5.383 min  
 Delta R.T.: -0.006 min  
 Response: 10274618  
 Conc: 278.12 ng/ml



#25 AR-1248-5

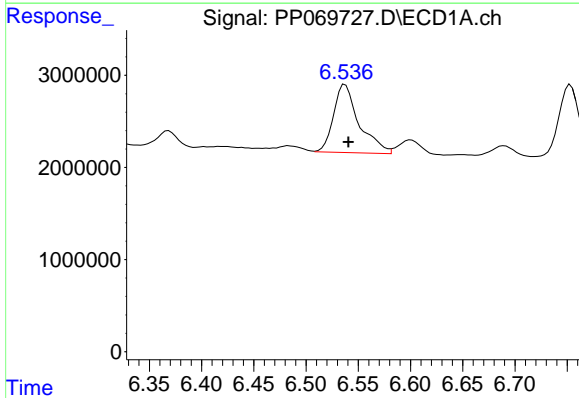
R.T.: 6.600 min  
 Delta R.T.: -0.003 min  
 Response: 2317125  
 Conc: 43.41 ng/ml

Instrument :  
 ECD\_P  
 ClientSampleId :



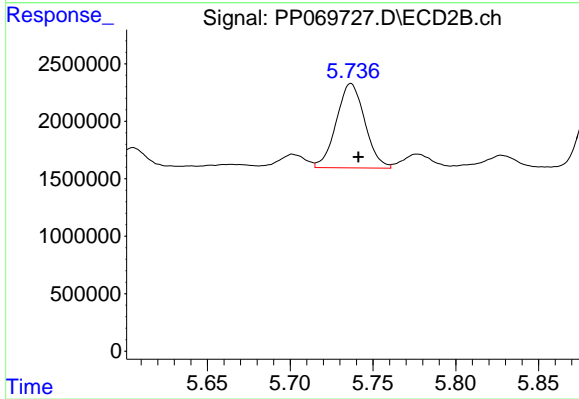
#25 AR-1248-5

R.T.: 5.777 min  
 Delta R.T.: -0.007 min  
 Response: 1584809  
 Conc: 42.39 ng/ml



#26 AR-1254-1

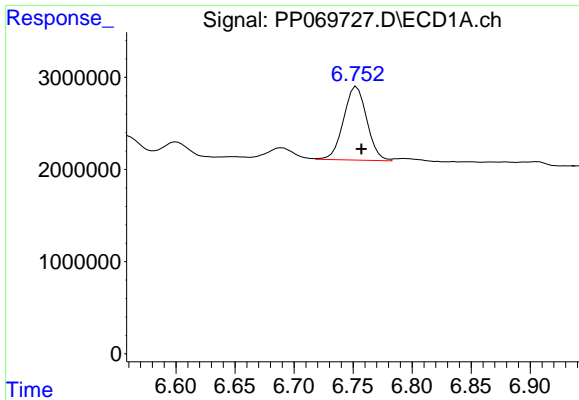
R.T.: 6.537 min  
 Delta R.T.: -0.003 min  
 Response: 12520653  
 Conc: 216.38 ng/ml



#26 AR-1254-1

R.T.: 5.737 min  
 Delta R.T.: -0.005 min  
 Response: 8792146  
 Conc: 159.70 ng/ml

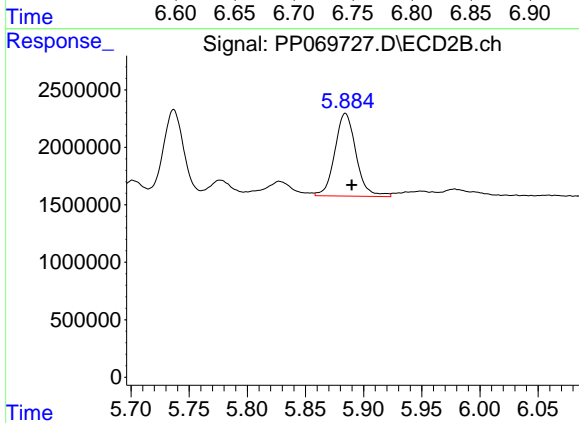




#27 AR-1254-2

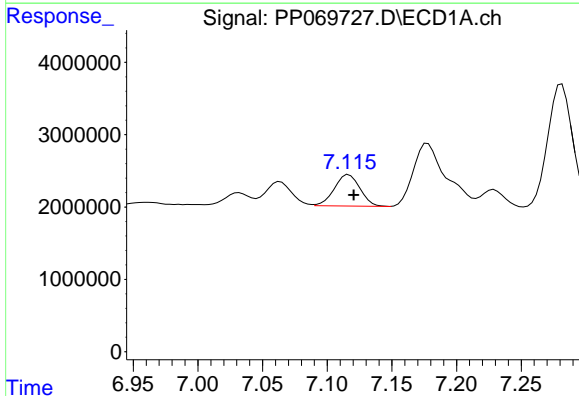
R.T.: 6.753 min  
 Delta R.T.: -0.004 min  
 Response: 10969159  
 Conc: 136.70 ng/ml

Instrument :  
 ECD\_P  
 ClientSampleId :



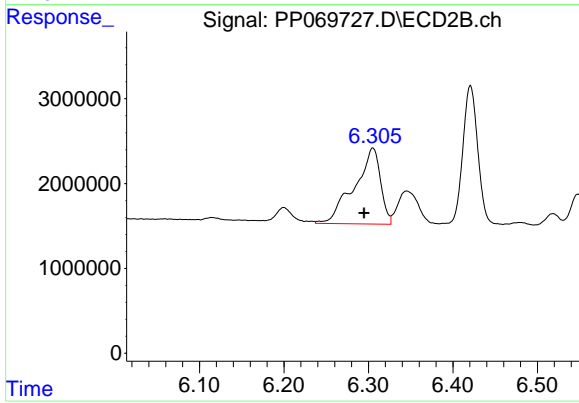
#27 AR-1254-2

R.T.: 5.884 min  
 Delta R.T.: -0.005 min  
 Response: 9147093  
 Conc: 189.11 ng/ml



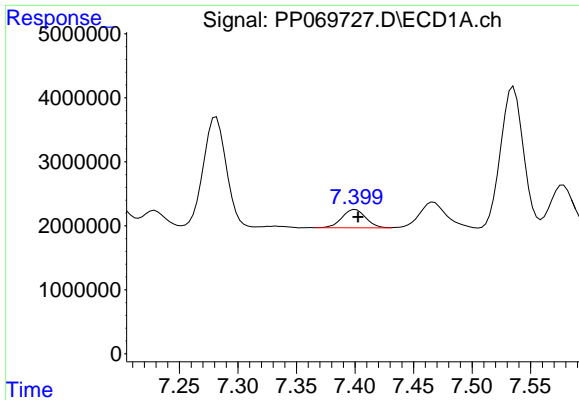
#28 AR-1254-3

R.T.: 7.117 min  
 Delta R.T.: -0.004 min  
 Response: 5993546  
 Conc: 71.11 ng/ml



#28 AR-1254-3

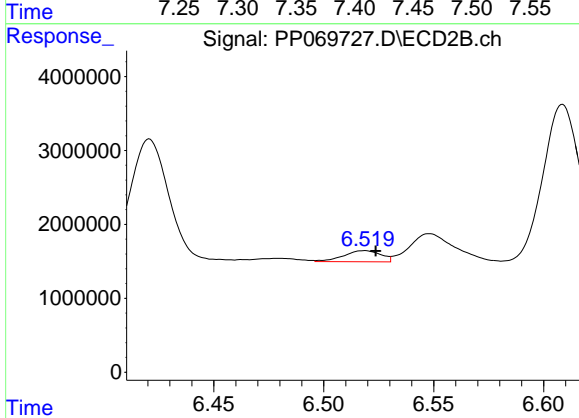
R.T.: 6.305 min  
 Delta R.T.: 0.010 min  
 Response: 19273249  
 Conc: 253.94 ng/ml



#29 AR-1254-4

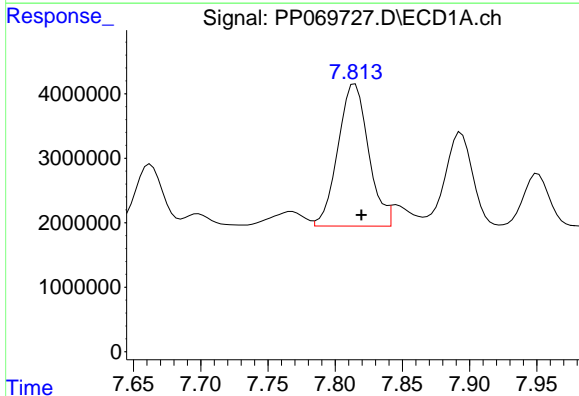
R.T.: 7.400 min  
 Delta R.T.: -0.002 min  
 Response: 4049681  
 Conc: 59.39 ng/ml

Instrument :  
 ECD\_P  
 ClientSampleId :



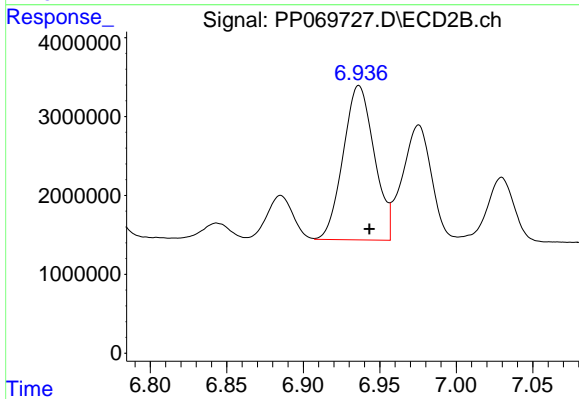
#29 AR-1254-4

R.T.: 6.519 min  
 Delta R.T.: -0.005 min  
 Response: 1745822  
 Conc: 34.07 ng/ml



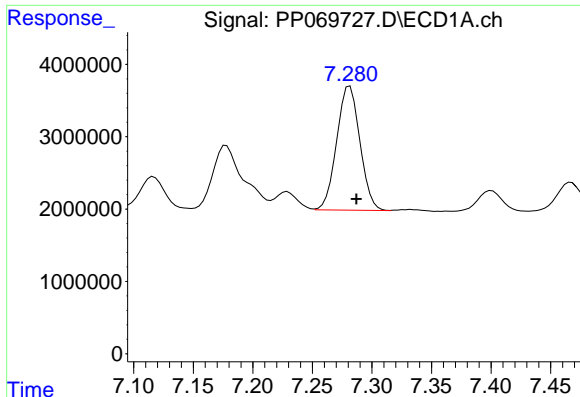
#30 AR-1254-5

R.T.: 7.815 min  
 Delta R.T.: -0.005 min  
 Response: 34744928  
 Conc: 510.61 ng/ml



#30 AR-1254-5

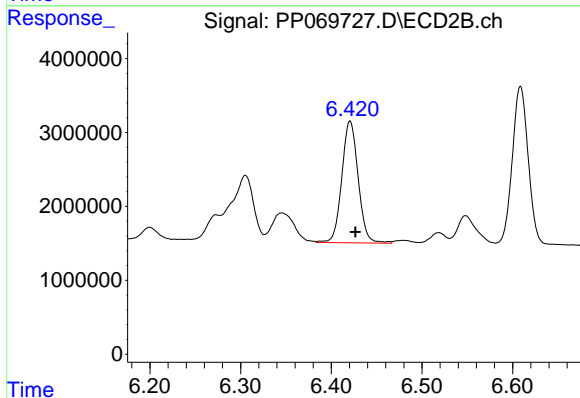
R.T.: 6.936 min  
 Delta R.T.: -0.007 min  
 Response: 27664975  
 Conc: 415.64 ng/ml



#31 AR-1260-1

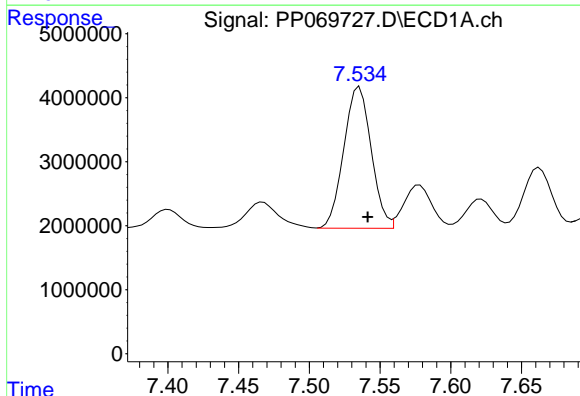
R.T.: 7.281 min  
 Delta R.T.: -0.005 min  
 Response: 23249882  
 Conc: 397.87 ng/ml

Instrument :  
 ECD\_P  
 ClientSampleId :



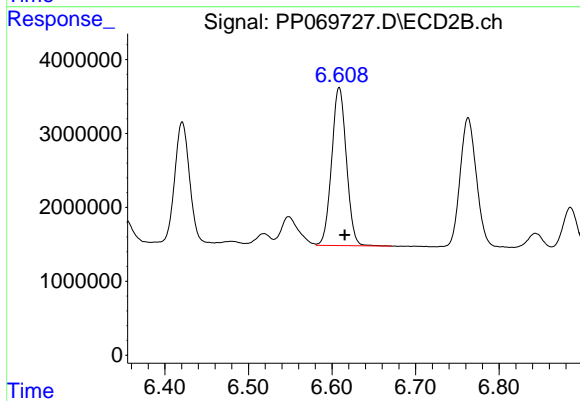
#31 AR-1260-1

R.T.: 6.421 min  
 Delta R.T.: -0.006 min  
 Response: 20627979  
 Conc: 427.70 ng/ml



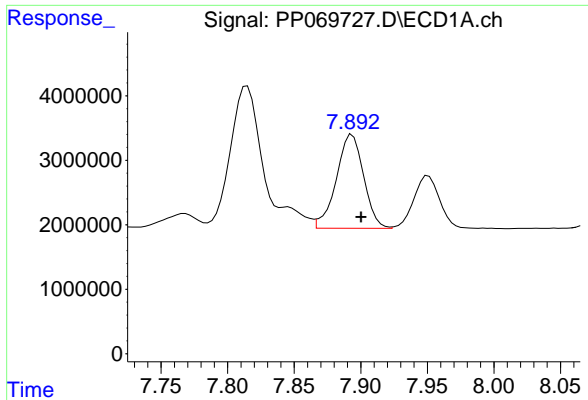
#32 AR-1260-2

R.T.: 7.535 min  
 Delta R.T.: -0.006 min  
 Response: 29868550  
 Conc: 383.85 ng/ml



#32 AR-1260-2

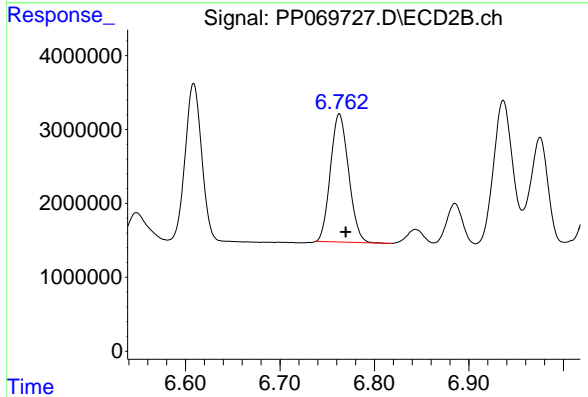
R.T.: 6.609 min  
 Delta R.T.: -0.006 min  
 Response: 26021246  
 Conc: 424.46 ng/ml



#33 AR-1260-3

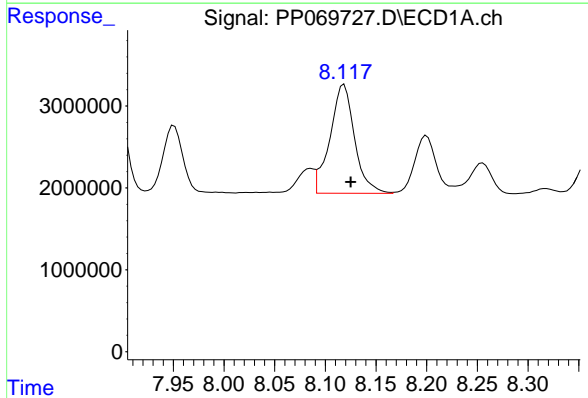
R.T.: 7.894 min  
 Delta R.T.: -0.007 min  
 Response: 20845755  
 Conc: 333.43 ng/ml

Instrument :  
 ECD\_P  
 ClientSampleId :



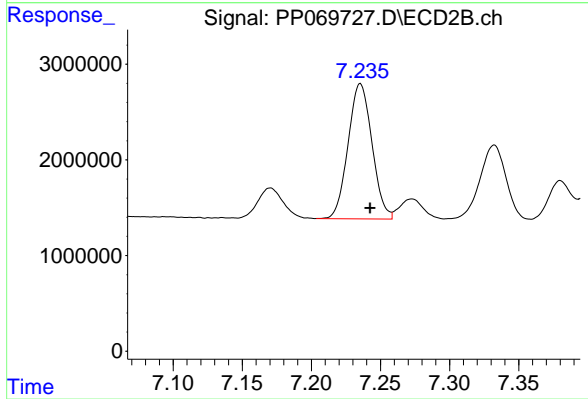
#33 AR-1260-3

R.T.: 6.763 min  
 Delta R.T.: -0.007 min  
 Response: 23159400  
 Conc: 384.99 ng/ml



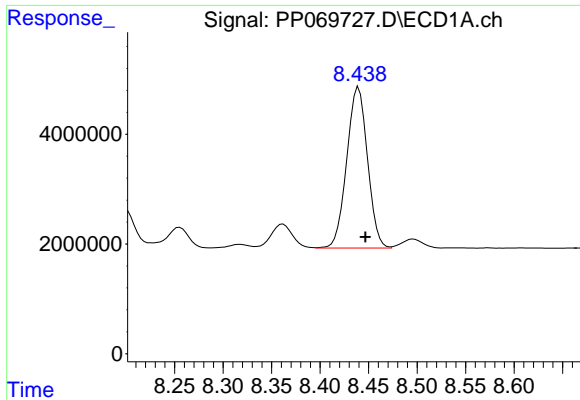
#34 AR-1260-4

R.T.: 8.119 min  
 Delta R.T.: -0.007 min  
 Response: 22473529  
 Conc: 340.63 ng/ml



#34 AR-1260-4

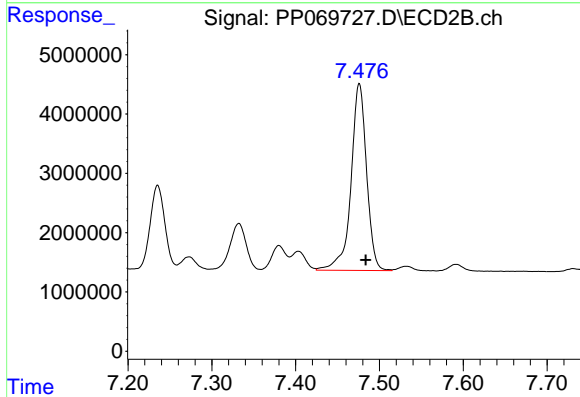
R.T.: 7.235 min  
 Delta R.T.: -0.007 min  
 Response: 17056910  
 Conc: 367.07 ng/ml



#35 AR-1260-5

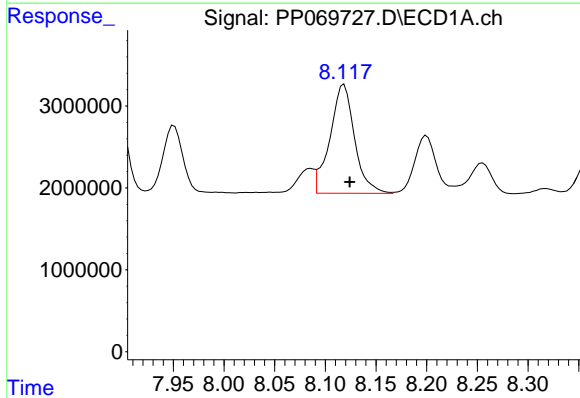
R.T.: 8.440 min  
 Delta R.T.: -0.007 min  
 Response: 43653274  
 Conc: 333.42 ng/ml

Instrument :  
 ECD\_P  
 ClientSampleId :



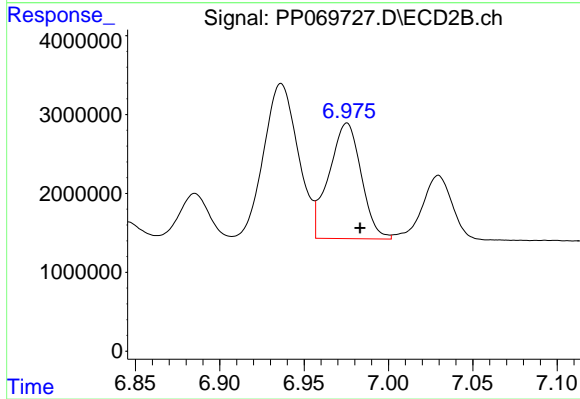
#35 AR-1260-5

R.T.: 7.476 min  
 Delta R.T.: -0.008 min  
 Response: 40706294  
 Conc: 366.24 ng/ml



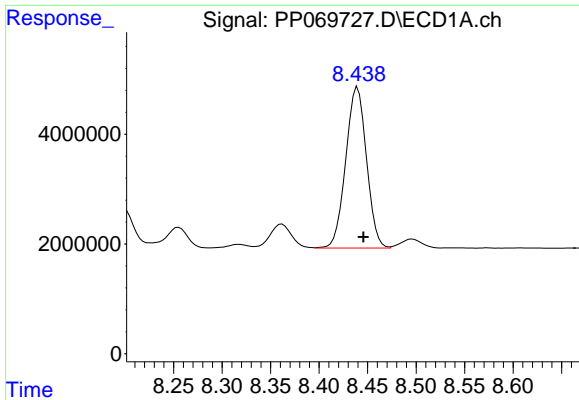
#36 AR-1262-1

R.T.: 8.119 min  
 Delta R.T.: -0.005 min  
 Response: 22473529  
 Conc: 284.41 ng/ml



#36 AR-1262-1

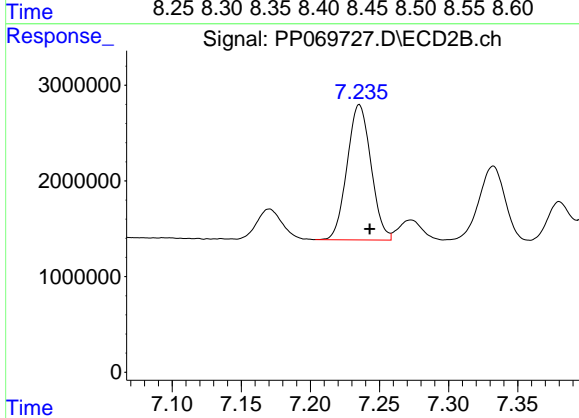
R.T.: 6.975 min  
 Delta R.T.: -0.008 min  
 Response: 19488220  
 Conc: 274.43 ng/ml



#37 AR-1262-2

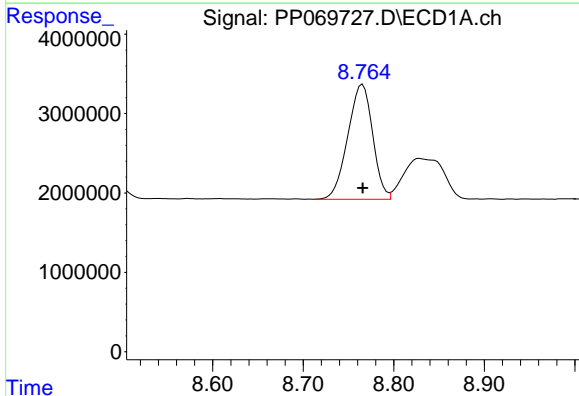
R.T.: 8.440 min  
 Delta R.T.: -0.006 min  
 Response: 43653274  
 Conc: 285.46 ng/ml

Instrument :  
 ECD\_P  
 ClientSampleId :



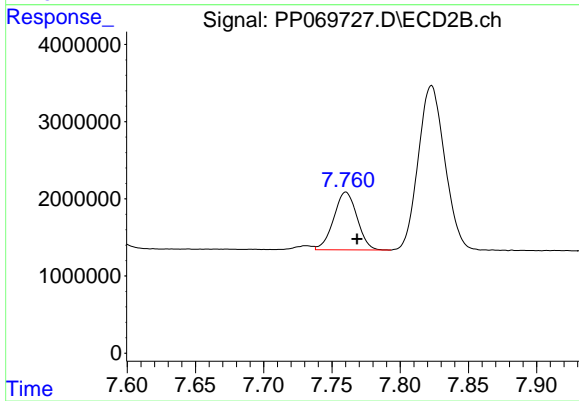
#37 AR-1262-2

R.T.: 7.235 min  
 Delta R.T.: -0.008 min  
 Response: 17056910  
 Conc: 279.72 ng/ml



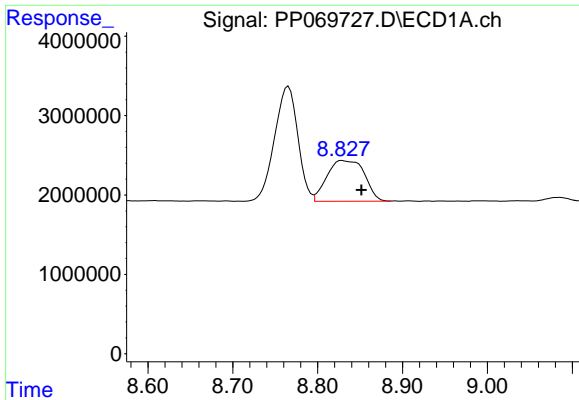
#38 AR-1262-3

R.T.: 8.766 min  
 Delta R.T.: 0.000 min  
 Response: 27636321  
 Conc: 260.03 ng/ml



#38 AR-1262-3

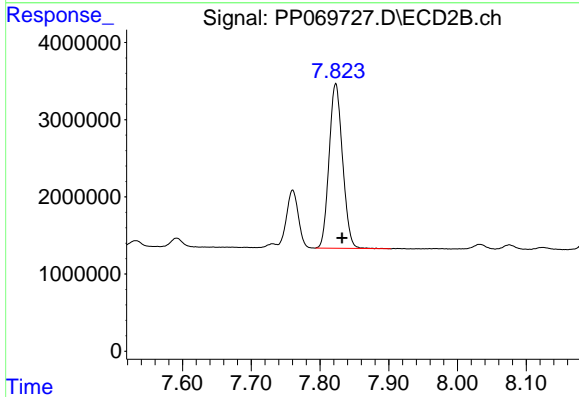
R.T.: 7.760 min  
 Delta R.T.: -0.008 min  
 Response: 8941270  
 Conc: 170.96 ng/ml



#39 AR-1262-4

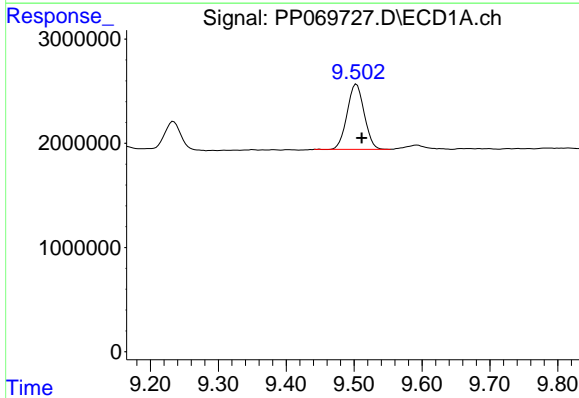
R.T.: 8.829 min  
 Delta R.T.: -0.023 min  
 Response: 15755451  
 Conc: 192.63 ng/ml

Instrument :  
 ECD\_P  
 ClientSampleId :



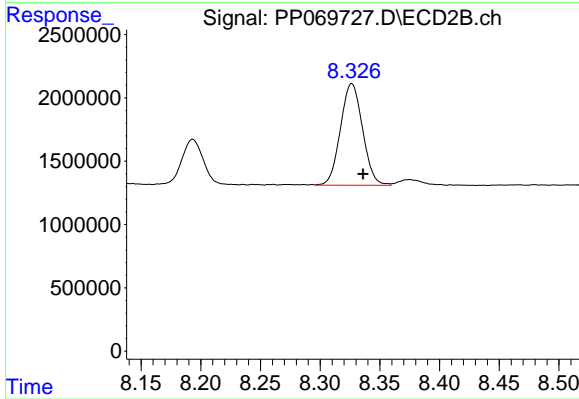
#39 AR-1262-4

R.T.: 7.823 min  
 Delta R.T.: -0.009 min  
 Response: 29023550  
 Conc: 313.98 ng/ml



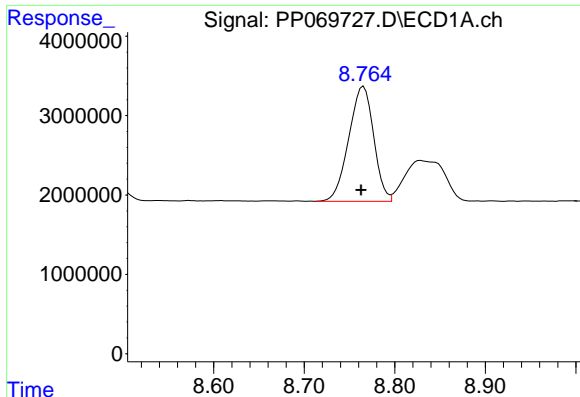
#40 AR-1262-5

R.T.: 9.504 min  
 Delta R.T.: -0.008 min  
 Response: 10941462  
 Conc: 193.28 ng/ml



#40 AR-1262-5

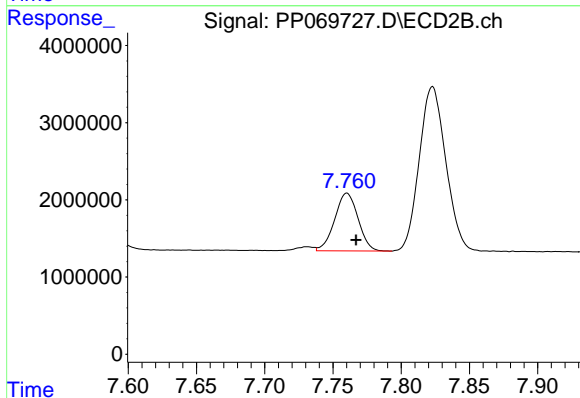
R.T.: 8.326 min  
 Delta R.T.: -0.009 min  
 Response: 10348629  
 Conc: 216.53 ng/ml



#41 AR-1268-1

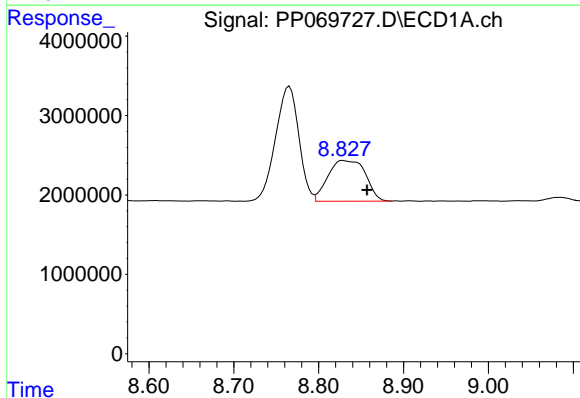
R.T.: 8.766 min  
 Delta R.T.: 0.003 min  
 Response: 27636321  
 Conc: 156.51 ng/ml

Instrument :  
 ECD\_P  
 ClientSampleId :



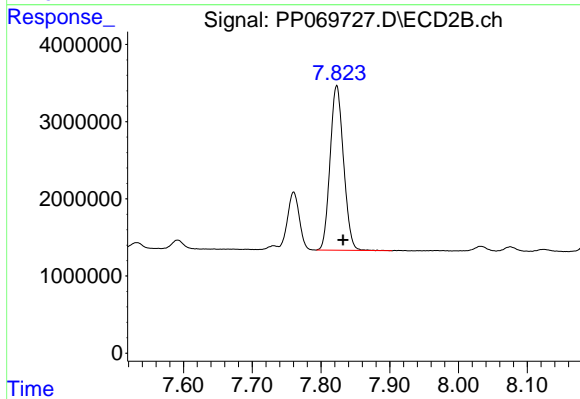
#41 AR-1268-1

R.T.: 7.760 min  
 Delta R.T.: -0.007 min  
 Response: 8941270  
 Conc: 61.61 ng/ml



#42 AR-1268-2

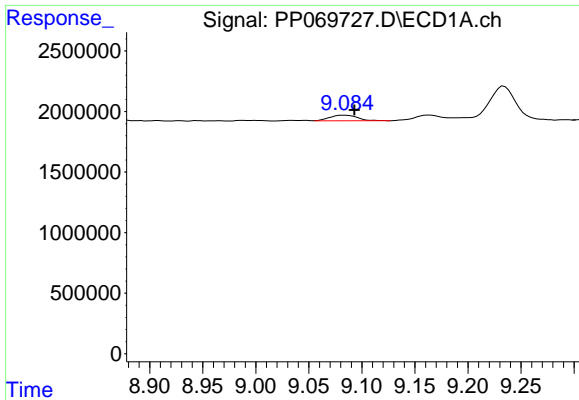
R.T.: 8.829 min  
 Delta R.T.: -0.028 min  
 Response: 15755451  
 Conc: 100.12 ng/ml



#42 AR-1268-2

R.T.: 7.823 min  
 Delta R.T.: -0.009 min  
 Response: 29023550  
 Conc: 218.53 ng/ml

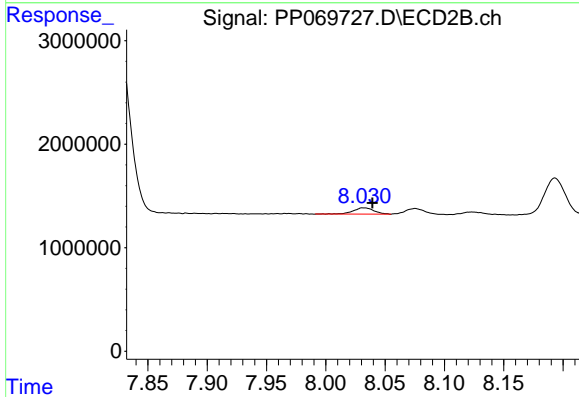




#43 AR-1268-3

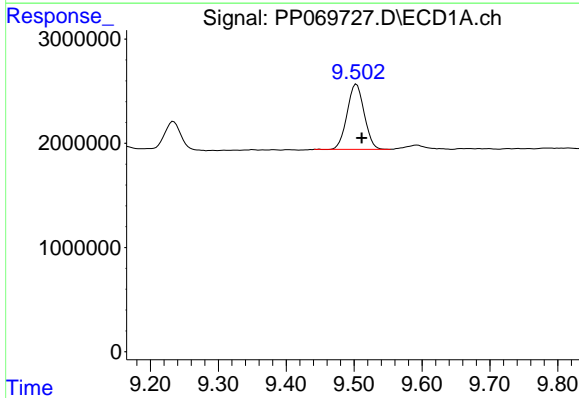
R.T.: 9.084 min  
 Delta R.T.: -0.009 min  
 Response: 846929  
 Conc: 6.33 ng/ml

Instrument :  
 ECD\_P  
 ClientSampleId :



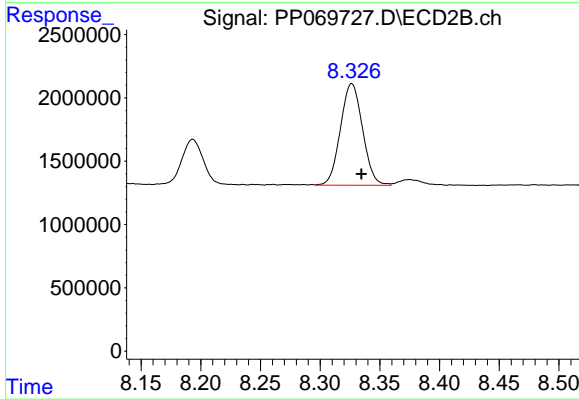
#43 AR-1268-3

R.T.: 8.032 min  
 Delta R.T.: -0.007 min  
 Response: 755989  
 Conc: 6.65 ng/ml



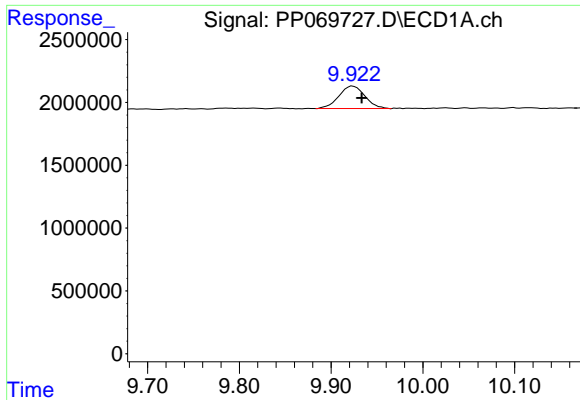
#44 AR-1268-4

R.T.: 9.504 min  
 Delta R.T.: -0.008 min  
 Response: 10941462  
 Conc: 186.33 ng/ml



#44 AR-1268-4

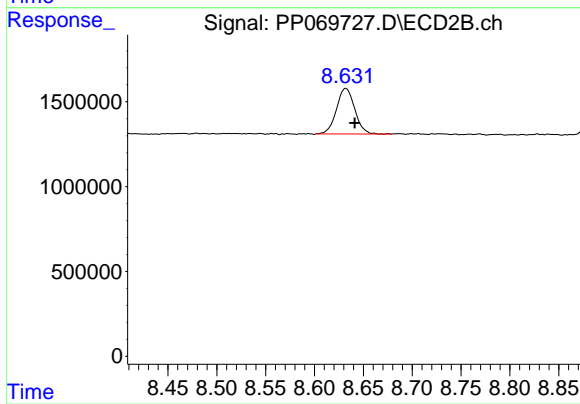
R.T.: 8.326 min  
 Delta R.T.: -0.008 min  
 Response: 10348629  
 Conc: 198.71 ng/ml



#45 AR-1268-5

R.T.: 9.924 min  
Delta R.T.: -0.010 min  
Response: 3536373  
Conc: 9.28 ng/ml

Instrument :  
ECD\_P  
ClientSampleId :



#45 AR-1268-5

R.T.: 8.632 min  
Delta R.T.: -0.009 min  
Response: 3497187  
Conc: 9.82 ng/ml