

Data Path : Z:\pestpcbsrv\HPCHEM1\ECD_P\Data\PP021323\
 Data File : PP055575.D
 Signal(s) : Signal #1: ECD1A.ch Signal #2: ECD2B.ch
 Acq On : 13 Feb 2023 15:23
 Operator : YP\AJ
 Sample : PB150809BL
 Misc :
 ALS Vial : 14 Sample Multiplier: 1

Instrument :
 ECD_P
ClientSampleId :
 PB150809BL

Integration File signal 1: autoint1.e
 Integration File signal 2: autoint2.e
 Quant Time: Feb 13 20:20:12 2023
 Quant Method : Z:\pestpcbsrv\HPCHEM1\ECD_P\methods\PP012423.M
 Quant Title : GC EXTRACTABLES
 QLast Update : Tue Jan 24 03:37:45 2023
 Response via : Initial Calibration
 Integrator: ChemStation

Volume Inj. : 2 µl
 Signal #1 Phase : ZB-MR1 Signal #2 Phase: ZB-MR2
 Signal #1 Info : 30Mx0.32mmx 0.50µ Signal #2 Info : 30M x 0.32mm x 0.25µm

| Compound | RT#1 | RT#2 | Resp#1 | Resp#2 | ng/ml | ng/ml |
|-----------------------------|--------|-------|----------|----------|--------|--------|
| ----- | | | | | | |
| System Monitoring Compounds | | | | | | |
| 1) SA Tetrachlo... | 4.329 | 3.575 | 32593847 | 28037336 | 18.746 | 18.676 |
| 2) SA Decachlor... | 10.087 | 8.585 | 32792815 | 26295717 | 18.937 | 19.470 |

Target Compounds

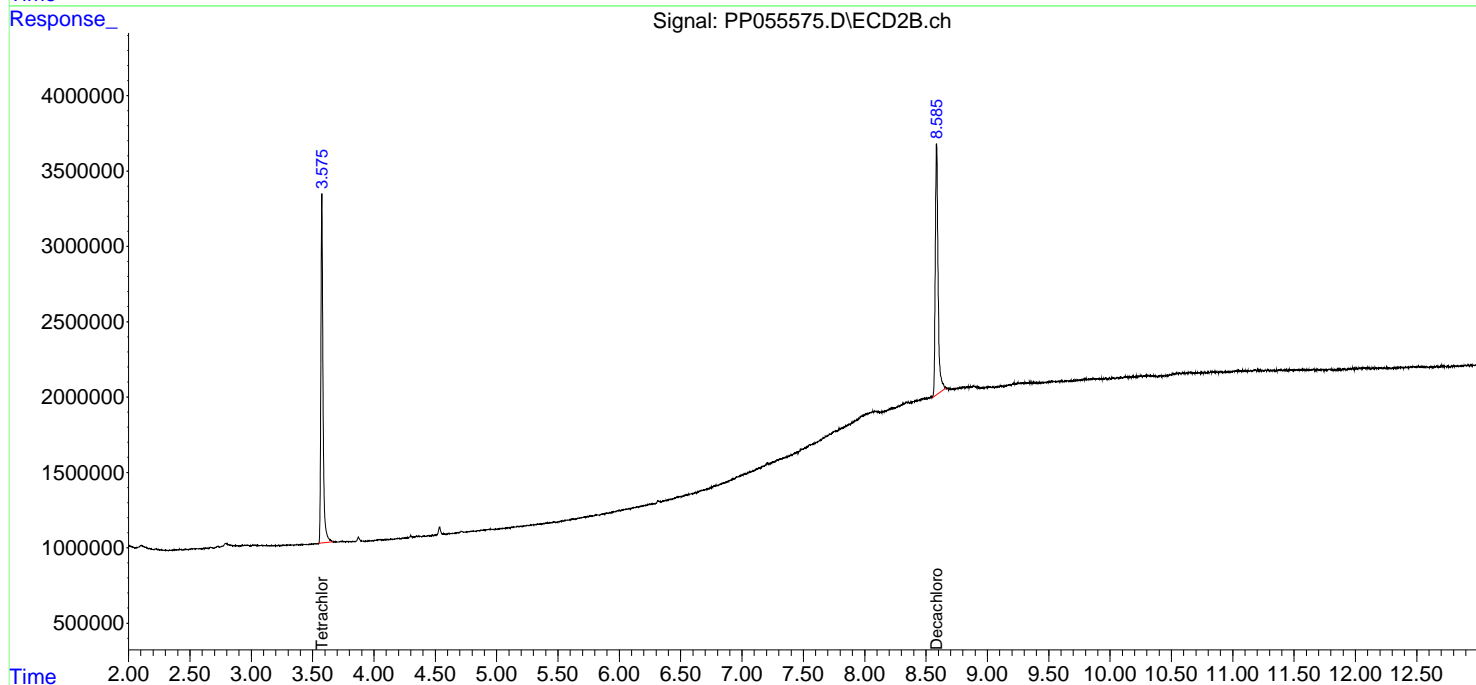
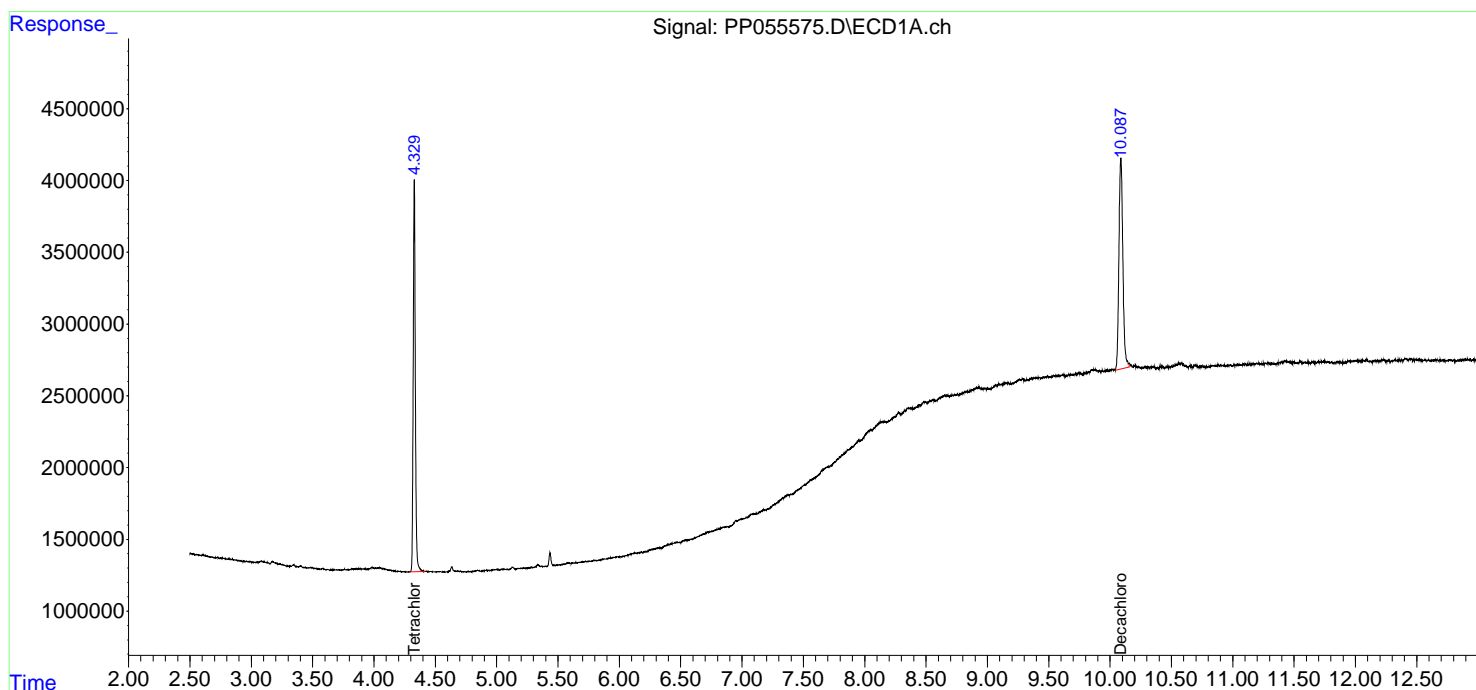
 (f)=RT Delta > 1/2 Window (#)=Amounts differ by > 25% (m)=manual int.

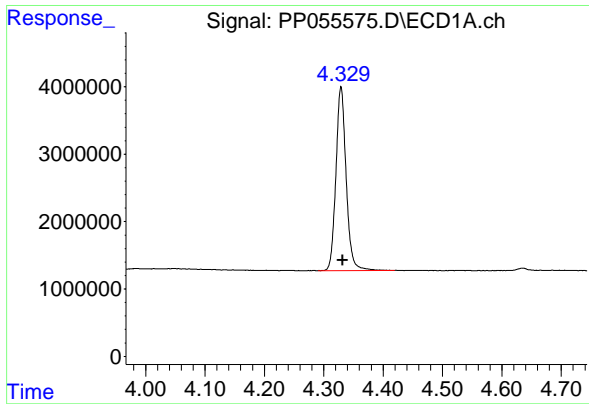
Data Path : Z:\pestpcbsrv\HPCHEM1\ECD_P\Data\PP021323\
 Data File : PP055575.D
 Signal(s) : Signal #1: ECD1A.ch Signal #2: ECD2B.ch
 Acq On : 13 Feb 2023 15:23
 Operator : YP\AJ
 Sample : PB150809BL
 Misc :
 ALS Vial : 14 Sample Multiplier: 1

Instrument :
 ECD_P
 ClientSampleId :
 PB150809BL

Integration File signal 1: autoint1.e
 Integration File signal 2: autoint2.e
 Quant Time: Feb 13 20:20:12 2023
 Quant Method : Z:\pestpcbsrv\HPCHEM1\ECD_P\methods\PP012423.M
 Quant Title : GC EXTRACTABLES
 QLast Update : Tue Jan 24 03:37:45 2023
 Response via : Initial Calibration
 Integrator: ChemStation

Volume Inj. : 2 µl
 Signal #1 Phase : ZB-MR1 Signal #2 Phase: ZB-MR2
 Signal #1 Info : 30Mx0.32mmx 0.50µm Signal #2 Info : 30M x 0.32mm x 0.25µm

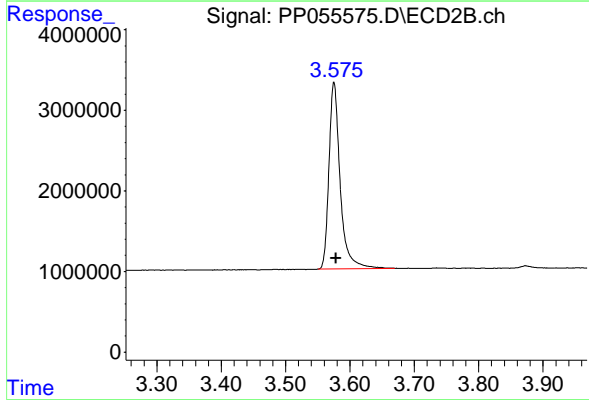




#1 Tetrachloro-m-xylene

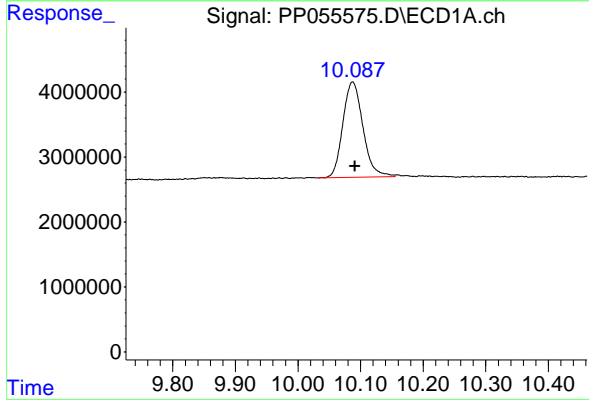
R.T.: 4.329 min
 Delta R.T.: -0.003 min
 Response: 32593847
 Conc: 18.75 ng/ml

Instrument :
 ECD_P
 ClientSampleId :
 PB150809BL



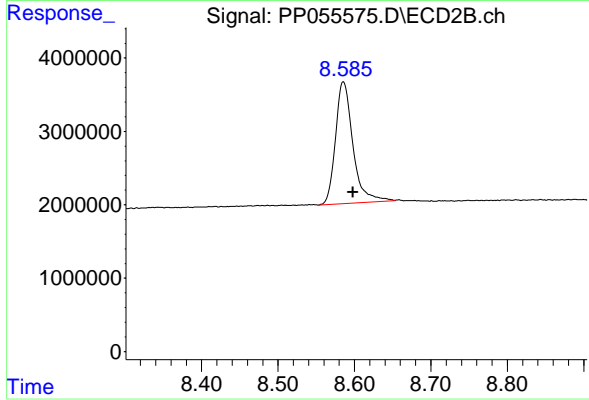
#1 Tetrachloro-m-xylene

R.T.: 3.575 min
 Delta R.T.: -0.003 min
 Response: 28037336
 Conc: 18.68 ng/ml



#2 Decachlorobiphenyl

R.T.: 10.087 min
 Delta R.T.: -0.004 min
 Response: 32792815
 Conc: 18.94 ng/ml



#2 Decachlorobiphenyl

R.T.: 8.585 min
 Delta R.T.: -0.013 min
 Response: 26295717
 Conc: 19.47 ng/ml