

Data Path : Z:\pestpcbsrv\HPCHEM1\ECD_P\Data\PP021422\
 Data File : PP043701.D
 Signal(s) : Signal #1: ECD1A.ch Signal #2: ECD2B.ch
 Acq On : 14 Feb 2022 20:44
 Operator : YP\AJ
 Sample : AR1660CCC500
 Misc :
 ALS Vial : 3 Sample Multiplier: 1

Instrument :
 ECD_P
 ClientSampleId :
 AR1660CCC500

Integration File signal 1: autoint1.e
 Integration File signal 2: autoint2.e
 Quant Time: Feb 15 00:41:17 2022
 Quant Method : Z:\pestpcbsrv\HPCHEM1\ECD_P\methods\PP021022.M
 Quant Title : GC EXTRACTABLES
 QLast Update : Fri Feb 11 04:48:05 2022
 Response via : Initial Calibration
 Integrator: ChemStation

Volume Inj. : 2 µl
 Signal #1 Phase : ZB-MR1 Signal #2 Phase: ZB-MR2
 Signal #1 Info : 30Mx0.32mmx 0.50µ Signal #2 Info : 30M x 0.32mm x 0.25µm

Compound	RT#1	RT#2	Resp#1	Resp#2	ng/ml	ng/ml

System Monitoring Compounds						
1) SA Tetrachlo...	3.919	3.175	100.7E6	86191841	45.551	45.889
2) SA Decachlor...	10.067	8.552	59178980	76120428	49.819	46.919
Target Compounds						
3) L1 AR-1016-1	5.174	4.323	31566263	28135842	435.023	459.216
4) L1 AR-1016-2	5.196	4.341	46635146	39203225	442.162	464.004
5) L1 AR-1016-3	5.262	4.526	28983505	21881239	440.177	468.379
6) L1 AR-1016-4	5.368	4.575	23762962	17667547	438.186	472.761
7) L1 AR-1016-5	5.689	4.800	23351690	21703967	444.558	475.103
31) L7 AR-1260-1	6.919	5.911	37202078	37309002	444.245	466.538
32) L7 AR-1260-2	7.203	6.118	41346164	45292308	456.759	463.809
33) L7 AR-1260-3	7.599	6.281	32265904	42483949	445.117	465.367
34) L7 AR-1260-4	7.846	6.795	36841141	38158009	429.102	471.610
35) L7 AR-1260-5	8.189	7.061	67008279	88081188	432.291	476.462

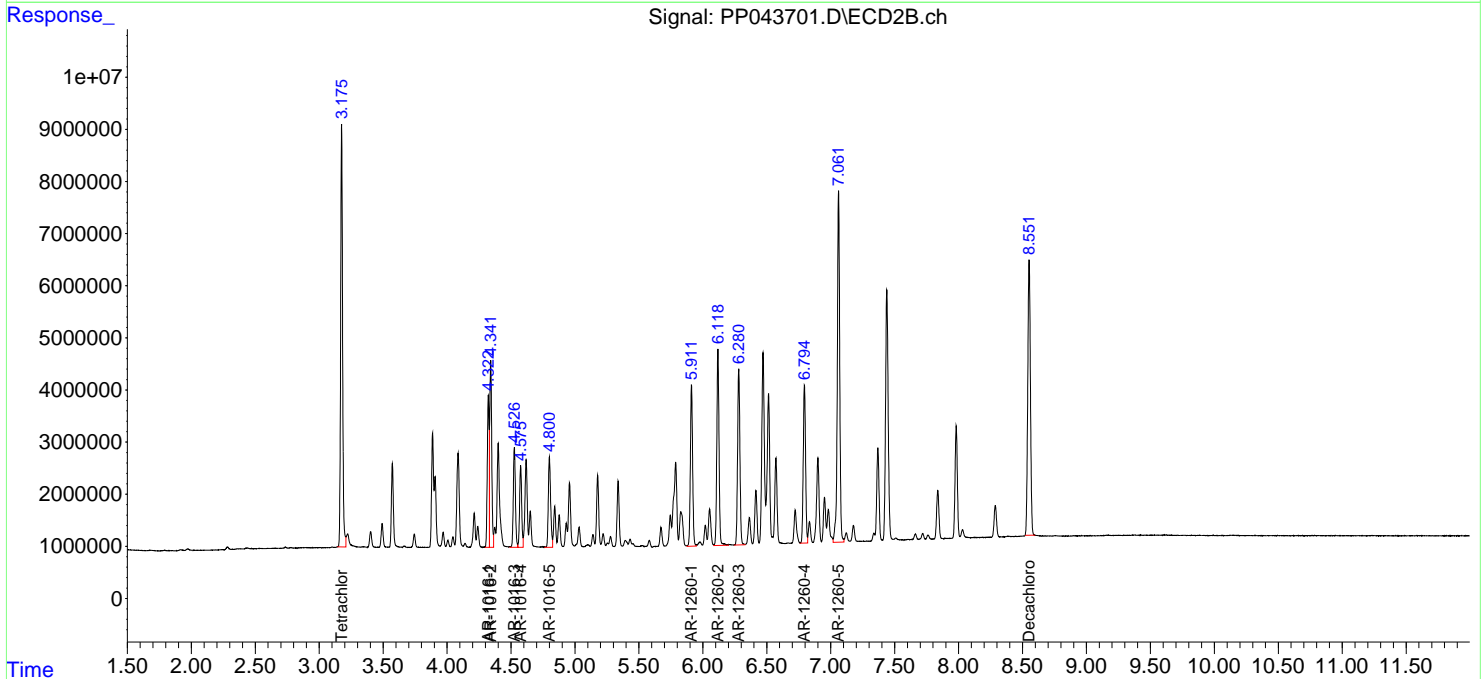
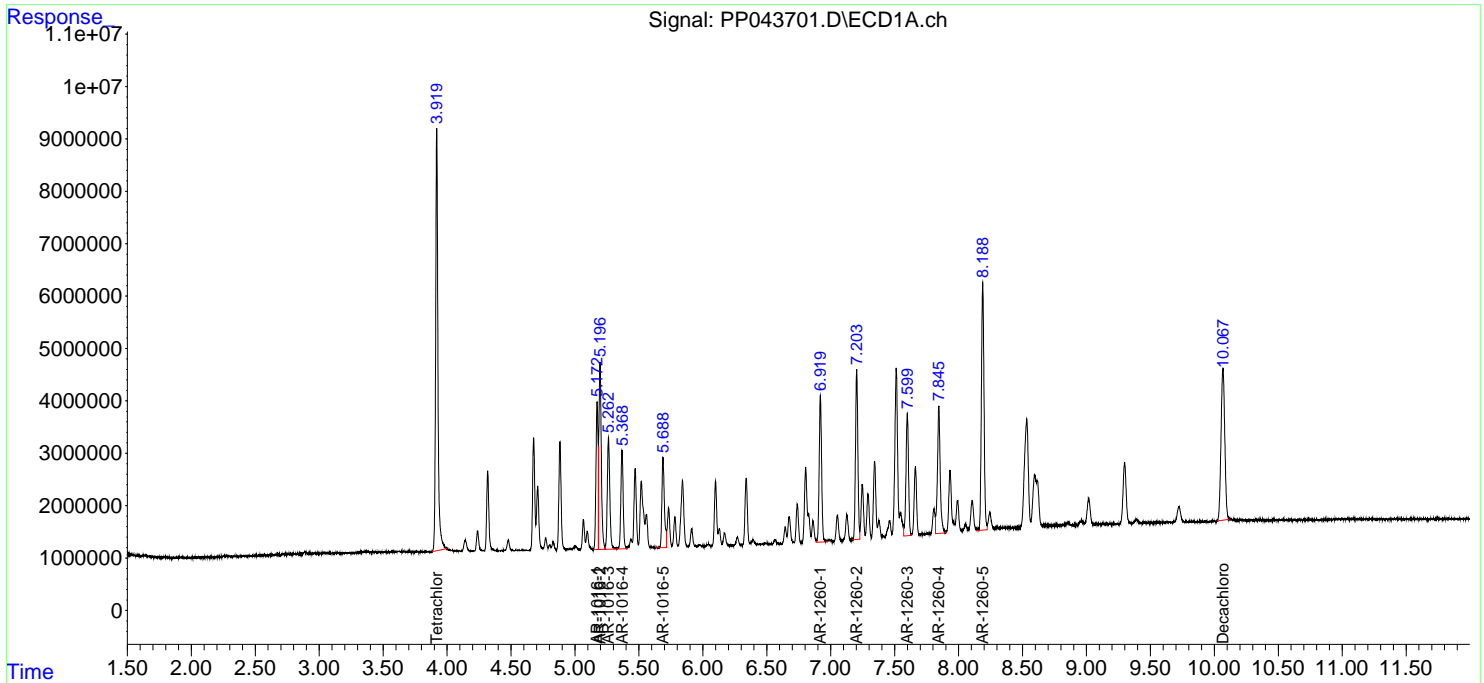
(f)=RT Delta > 1/2 Window (#)=Amounts differ by > 25% (m)=manual int.

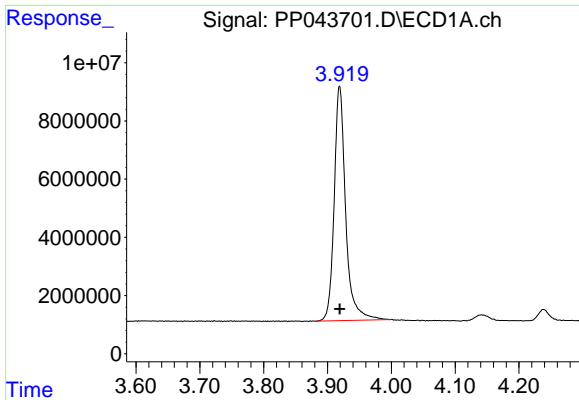
Data Path : Z:\pestpcbsrv\HPCHEM1\ECD_P\Data\PP021422\
 Data File : PP043701.D
 Signal(s) : Signal #1: ECD1A.ch Signal #2: ECD2B.ch
 Acq On : 14 Feb 2022 20:44
 Operator : YP\AJ
 Sample : AR1660CCC500
 Misc :
 ALS Vial : 3 Sample Multiplier: 1

Instrument :
 ECD_P
 ClientSampleId :
 AR1660CCC500

Integration File signal 1: autoint1.e
 Integration File signal 2: autoint2.e
 Quant Time: Feb 15 00:41:17 2022
 Quant Method : Z:\pestpcbsrv\HPCHEM1\ECD_P\methods\PP021022.M
 Quant Title : GC EXTRACTABLES
 QLast Update : Fri Feb 11 04:48:05 2022
 Response via : Initial Calibration
 Integrator: ChemStation

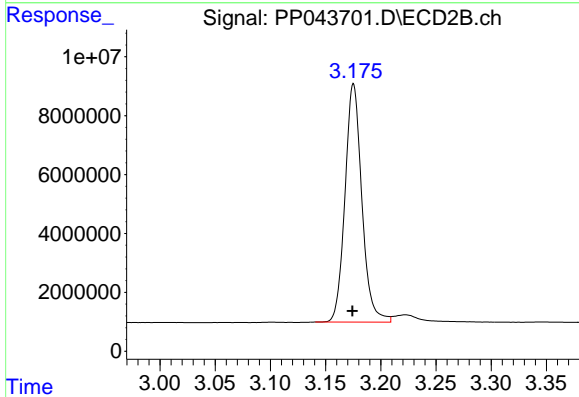
Volume Inj. : 2 µl
 Signal #1 Phase : ZB-MR1 Signal #2 Phase: ZB-MR2
 Signal #1 Info : 30Mx0.32mmx 0.50µ Signal #2 Info : 30M x 0.32mm x 0.25µm



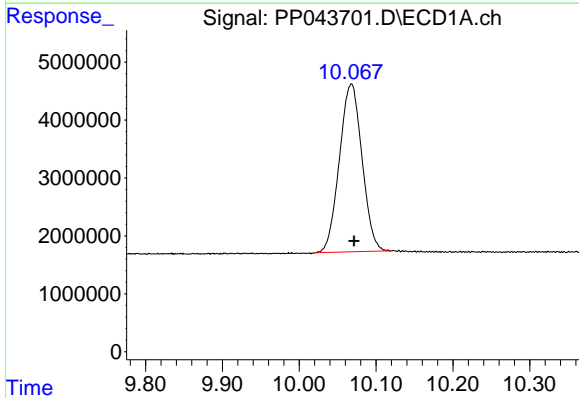


#1 Tetrachloro-m-xylene
 R.T.: 3.919 min
 Delta R.T.: 0.000 min
 Response: 100715006
 Conc: 45.55 ng/ml

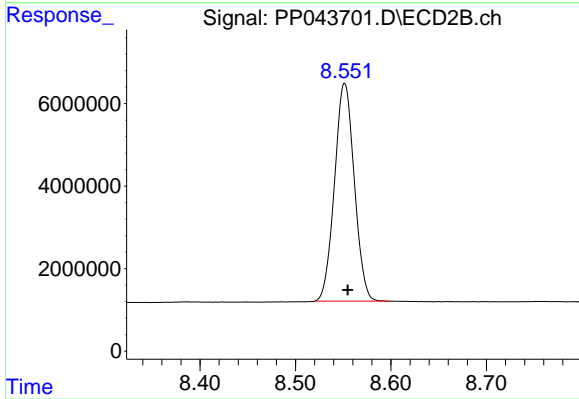
Instrument :
 ECD_P
 ClientSampleId :
 AR1660CCC500



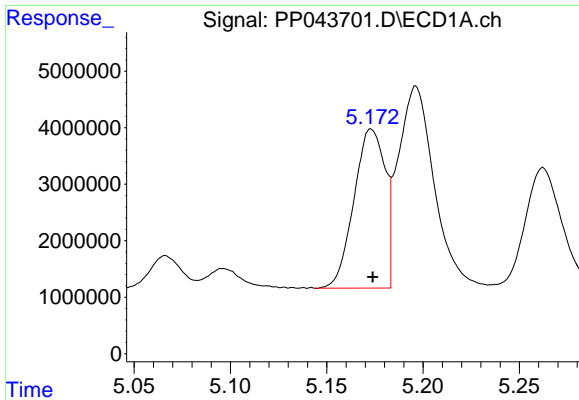
#1 Tetrachloro-m-xylene
 R.T.: 3.175 min
 Delta R.T.: 0.001 min
 Response: 86191841
 Conc: 45.89 ng/ml



#2 Decachlorobiphenyl
 R.T.: 10.067 min
 Delta R.T.: -0.004 min
 Response: 59178980
 Conc: 49.82 ng/ml



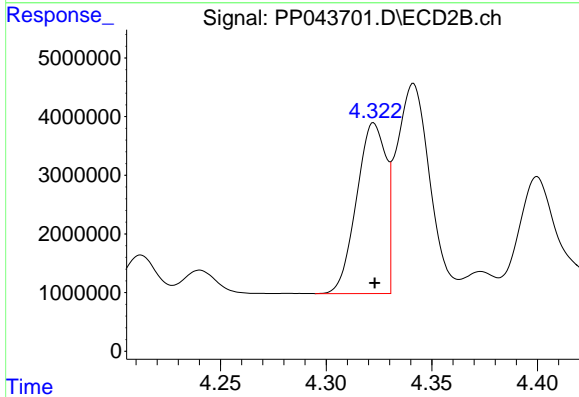
#2 Decachlorobiphenyl
 R.T.: 8.552 min
 Delta R.T.: -0.003 min
 Response: 76120428
 Conc: 46.92 ng/ml



#3 AR-1016-1

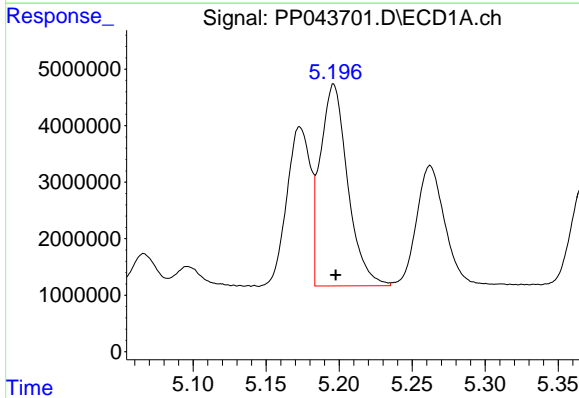
R.T.: 5.174 min
 Delta R.T.: 0.000 min
 Response: 31566263
 Conc: 435.02 ng/ml

Instrument :
 ECD_P
 ClientSampleId :
 AR1660CCC500



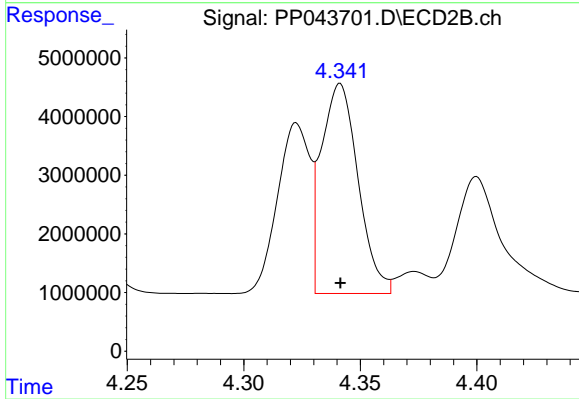
#3 AR-1016-1

R.T.: 4.323 min
 Delta R.T.: 0.000 min
 Response: 28135842
 Conc: 459.22 ng/ml



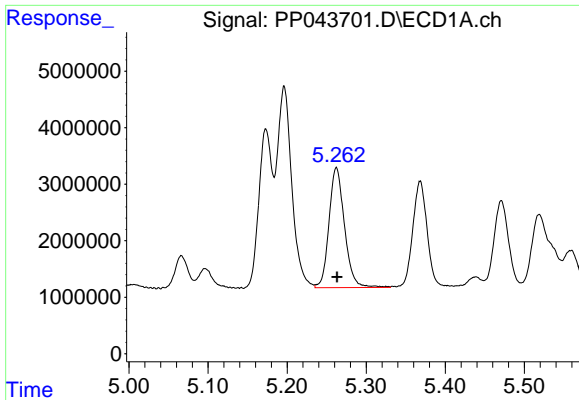
#4 AR-1016-2

R.T.: 5.196 min
 Delta R.T.: -0.001 min
 Response: 46635146
 Conc: 442.16 ng/ml



#4 AR-1016-2

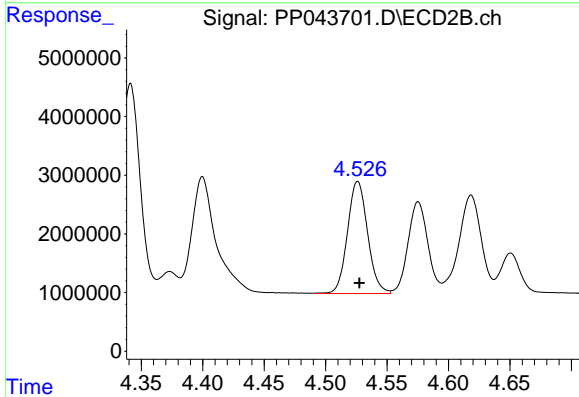
R.T.: 4.341 min
 Delta R.T.: 0.000 min
 Response: 39203225
 Conc: 464.00 ng/ml



#5 AR-1016-3

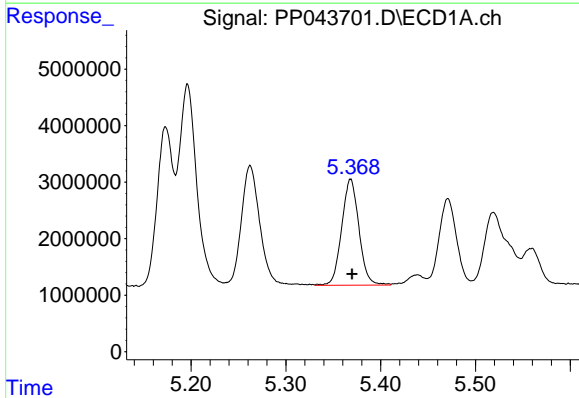
R.T.: 5.262 min
 Delta R.T.: -0.001 min
 Response: 28983505
 Conc: 440.18 ng/ml

Instrument :
 ECD_P
 ClientSampleId :
 AR1660CCC500



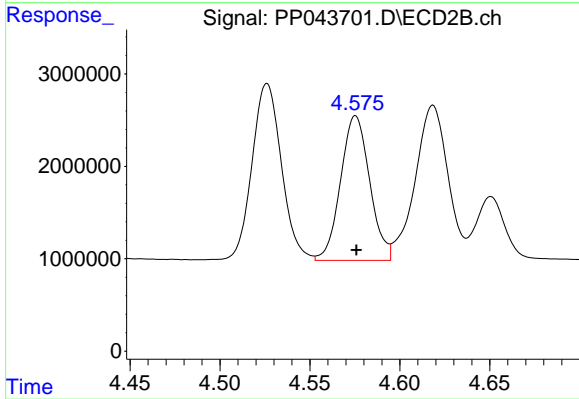
#5 AR-1016-3

R.T.: 4.526 min
 Delta R.T.: -0.001 min
 Response: 21881239
 Conc: 468.38 ng/ml



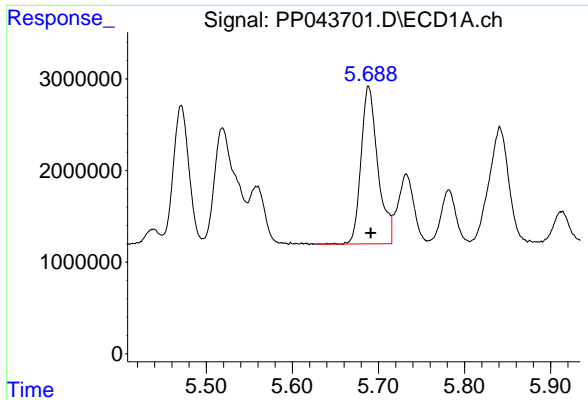
#6 AR-1016-4

R.T.: 5.368 min
 Delta R.T.: -0.001 min
 Response: 23762962
 Conc: 438.19 ng/ml



#6 AR-1016-4

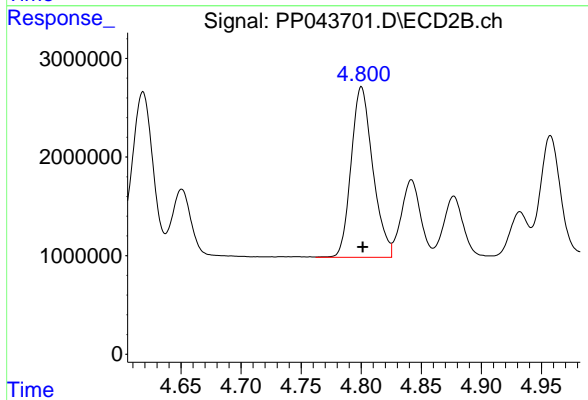
R.T.: 4.575 min
 Delta R.T.: 0.000 min
 Response: 17667547
 Conc: 472.76 ng/ml



#7 AR-1016-5

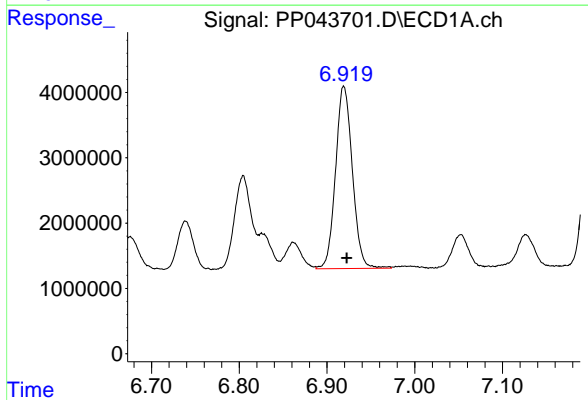
R.T.: 5.689 min
Delta R.T.: -0.002 min
Response: 23351690
Conc: 444.56 ng/ml

Instrument :
ECD_P
ClientSampleId :
AR1660CCC500



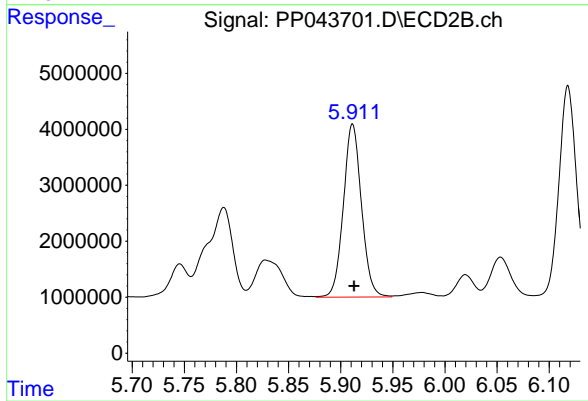
#7 AR-1016-5

R.T.: 4.800 min
Delta R.T.: -0.001 min
Response: 21703967
Conc: 475.10 ng/ml



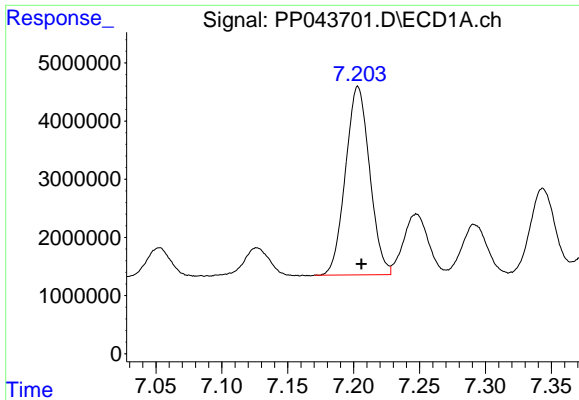
#31 AR-1260-1

R.T.: 6.919 min
Delta R.T.: -0.003 min
Response: 37202078
Conc: 444.25 ng/ml



#31 AR-1260-1

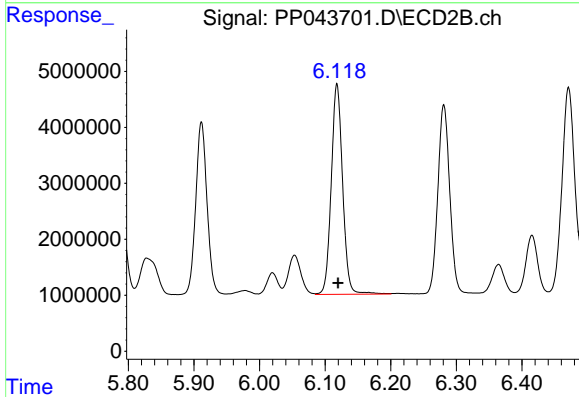
R.T.: 5.911 min
Delta R.T.: -0.002 min
Response: 37309002
Conc: 466.54 ng/ml



#32 AR-1260-2

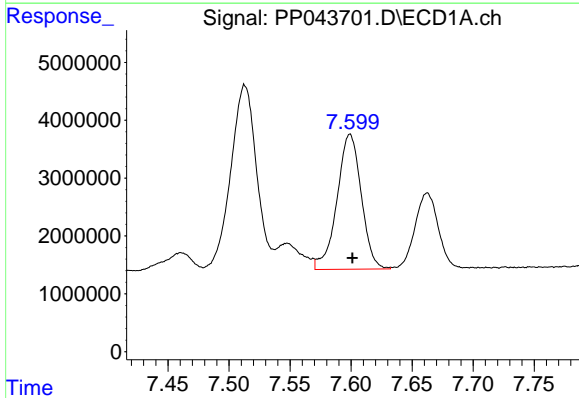
R.T.: 7.203 min
 Delta R.T.: -0.003 min
 Response: 41346164
 Conc: 456.76 ng/ml

Instrument :
 ECD_P
 ClientSampleId :
 AR1660CCC500



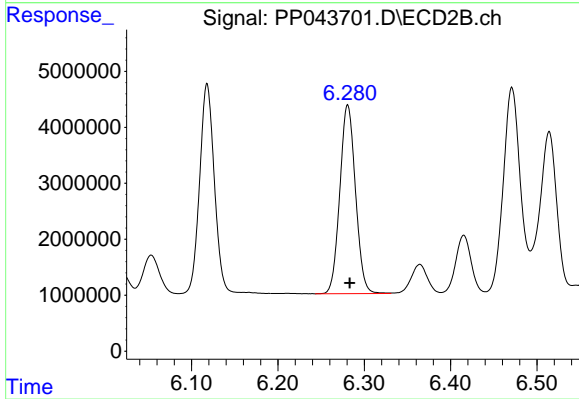
#32 AR-1260-2

R.T.: 6.118 min
 Delta R.T.: -0.002 min
 Response: 45292308
 Conc: 463.81 ng/ml



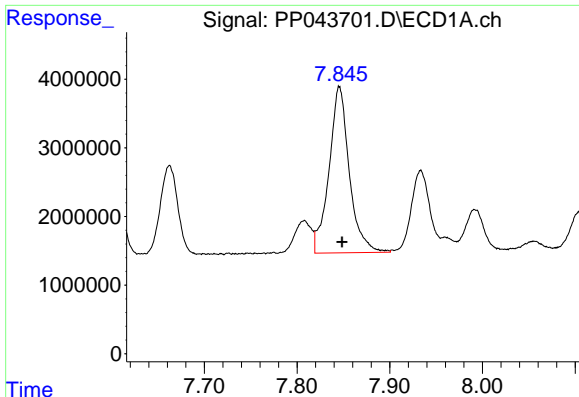
#33 AR-1260-3

R.T.: 7.599 min
 Delta R.T.: -0.002 min
 Response: 32265904
 Conc: 445.12 ng/ml



#33 AR-1260-3

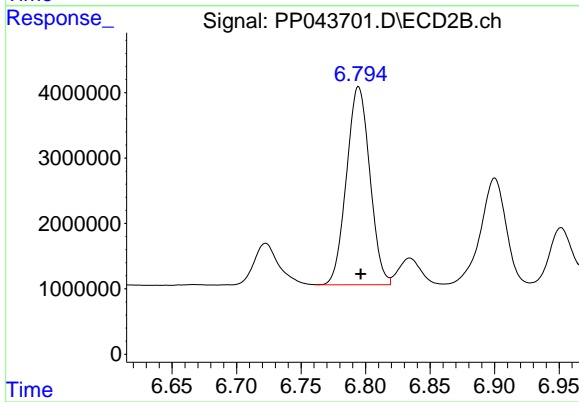
R.T.: 6.281 min
 Delta R.T.: -0.002 min
 Response: 42483949
 Conc: 465.37 ng/ml



#34 AR-1260-4

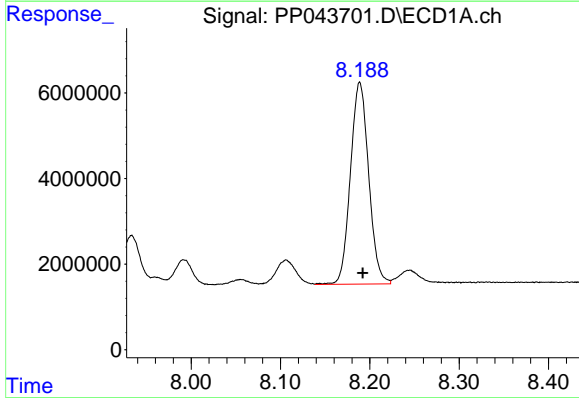
R.T.: 7.846 min
Delta R.T.: -0.003 min
Response: 36841141
Conc: 429.10 ng/ml

Instrument :
ECD_P
ClientSampleId :
AR1660CCC500



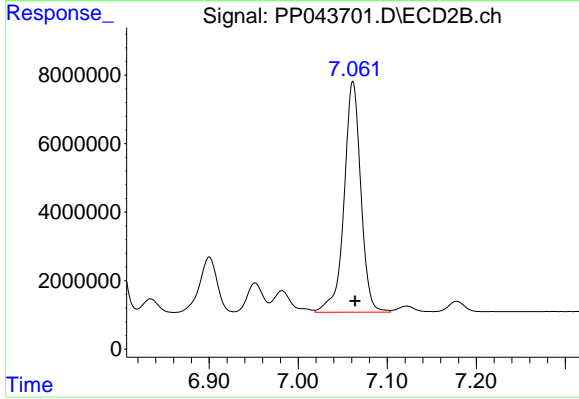
#34 AR-1260-4

R.T.: 6.795 min
Delta R.T.: -0.002 min
Response: 38158009
Conc: 471.61 ng/ml



#35 AR-1260-5

R.T.: 8.189 min
Delta R.T.: -0.003 min
Response: 67008279
Conc: 432.29 ng/ml



#35 AR-1260-5

R.T.: 7.061 min
Delta R.T.: -0.002 min
Response: 88081188
Conc: 476.46 ng/ml