

Data Path : Z:\pestpcbsrv\HPCHEM1\ECD_P\Data\PP021422\
 Data File : PP043718.D
 Signal(s) : Signal #1: ECD1A.ch Signal #2: ECD2B.ch
 Acq On : 15 Feb 2022 01:33
 Operator : YP\AJ
 Sample : AR1248CCC500
 Misc :
 ALS Vial : 5 Sample Multiplier: 1

Instrument :
 ECD_P
ClientSampleId :
 AR1248CCC500

Integration File signal 1: autoint1.e
 Integration File signal 2: autoint2.e
 Quant Time: Feb 15 02:20:14 2022
 Quant Method : Z:\pestpcbsrv\HPCHEM1\ECD_P\methods\PP021022.M
 Quant Title : GC EXTRACTABLES
 QLast Update : Fri Feb 11 04:48:05 2022
 Response via : Initial Calibration
 Integrator: ChemStation

Volume Inj. : 2 µl
 Signal #1 Phase : ZB-MR1 Signal #2 Phase: ZB-MR2
 Signal #1 Info : 30Mx0.32mmx 0.50µ Signal #2 Info : 30M x 0.32mm x 0.25µm

Compound	RT#1	RT#2	Resp#1	Resp#2	ng/ml	ng/ml

System Monitoring Compounds						
1) SA Tetrachlo...	3.919	3.176	101.4E6	91474097	45.865	48.701
2) SA Decachlor...	10.067	8.552	59449523	74529169	50.047	45.938
Target Compounds						
21) L5 AR-1248-1	5.173	4.322	18758816	17227285	457.559	462.474
22) L5 AR-1248-2	5.470	4.575	25480346	22679634	448.496	463.594
23) L5 AR-1248-3	5.689	4.618	29843157	23767094	447.314	463.159
24) L5 AR-1248-4	6.129	4.801	31038991	26202927	444.259	446.951
25) L5 AR-1248-5	6.170	5.221	30621400	26784024	442.948	467.455

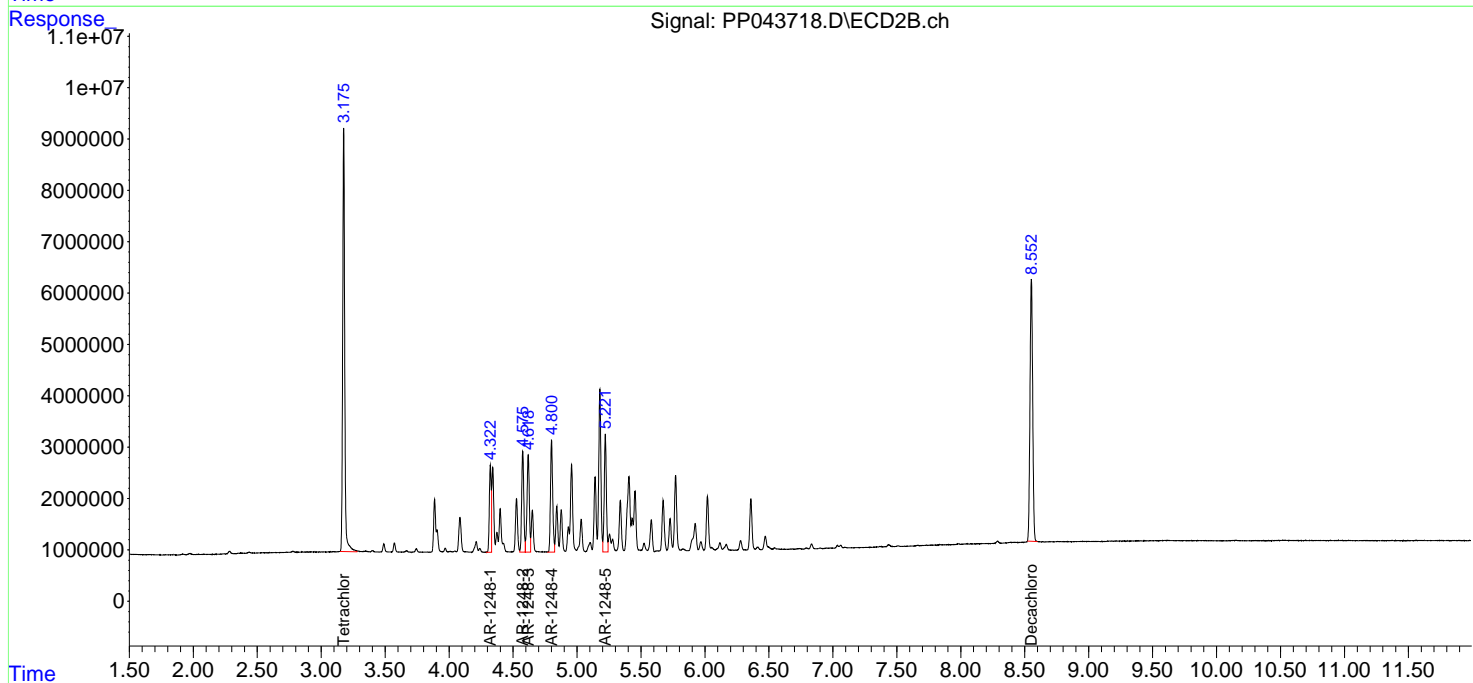
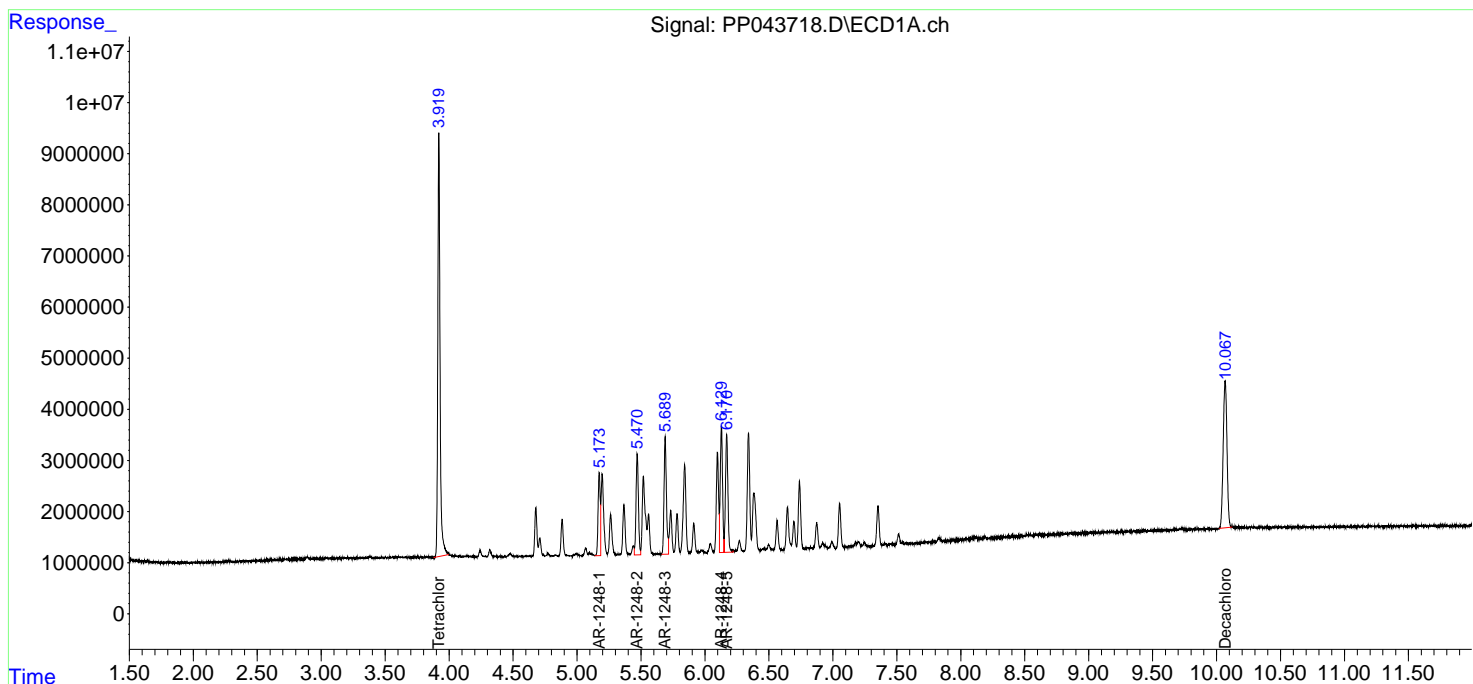
(f)=RT Delta > 1/2 Window (#)=Amounts differ by > 25% (m)=manual int.

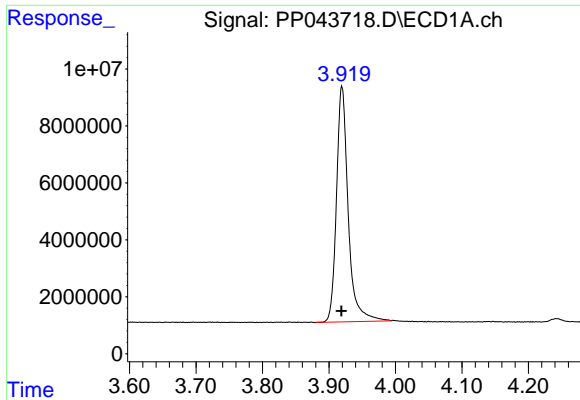
Data Path : Z:\pestpcbsrv\HPCHEM1\ECD_P\Data\PP021422\
 Data File : PP043718.D
 Signal(s) : Signal #1: ECD1A.ch Signal #2: ECD2B.ch
 Acq On : 15 Feb 2022 01:33
 Operator : YP\AJ
 Sample : AR1248CCC500
 Misc :
 ALS Vial : 5 Sample Multiplier: 1

Instrument :
 ECD_P
 ClientSampleId :
 AR1248CCC500

Integration File signal 1: autoint1.e
 Integration File signal 2: autoint2.e
 Quant Time: Feb 15 02:20:14 2022
 Quant Method : Z:\pestpcbsrv\HPCHEM1\ECD_P\methods\PP021022.M
 Quant Title : GC EXTRACTABLES
 QLast Update : Fri Feb 11 04:48:05 2022
 Response via : Initial Calibration
 Integrator: ChemStation

Volume Inj. : 2 µl
 Signal #1 Phase : ZB-MR1 Signal #2 Phase: ZB-MR2
 Signal #1 Info : 30Mx0.32mmx 0.50µ Signal #2 Info : 30M x 0.32mm x 0.25µm

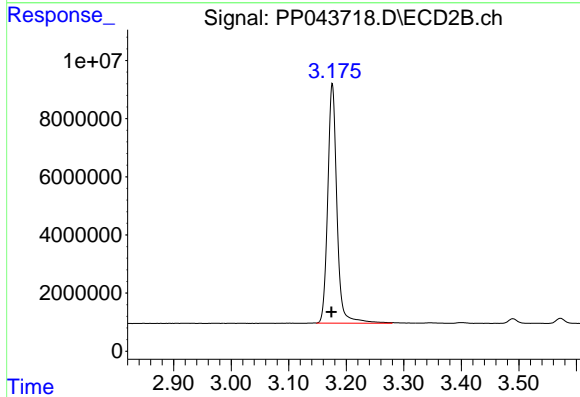




#1 Tetrachloro-m-xylene

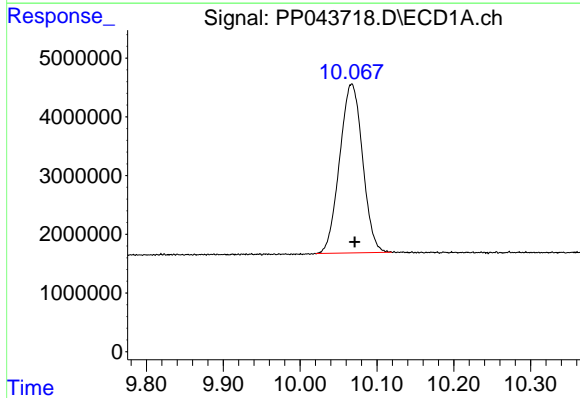
R.T.: 3.919 min
 Delta R.T.: 0.000 min
 Response: 101409795
 Conc: 45.87 ng/ml

Instrument :
 ECD_P
 ClientSampleId :
 AR1248CCC500



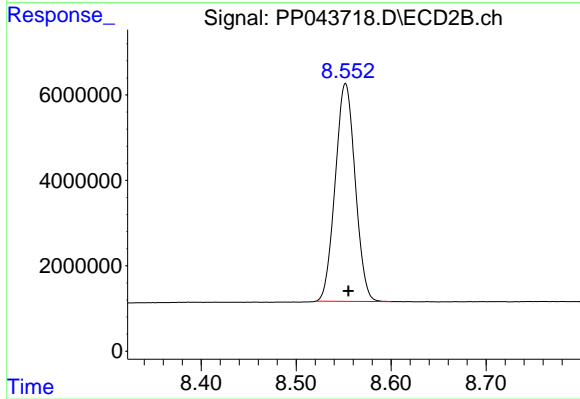
#1 Tetrachloro-m-xylene

R.T.: 3.176 min
 Delta R.T.: 0.001 min
 Response: 91474097
 Conc: 48.70 ng/ml



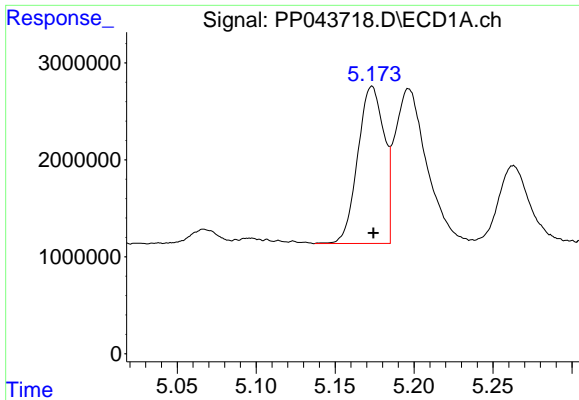
#2 Decachlorobiphenyl

R.T.: 10.067 min
 Delta R.T.: -0.004 min
 Response: 59449523
 Conc: 50.05 ng/ml



#2 Decachlorobiphenyl

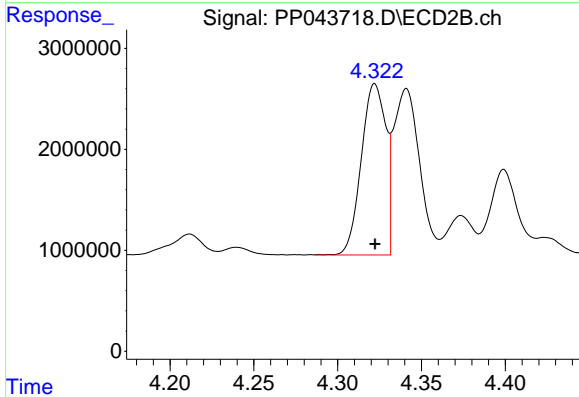
R.T.: 8.552 min
 Delta R.T.: -0.003 min
 Response: 74529169
 Conc: 45.94 ng/ml



#21 AR-1248-1

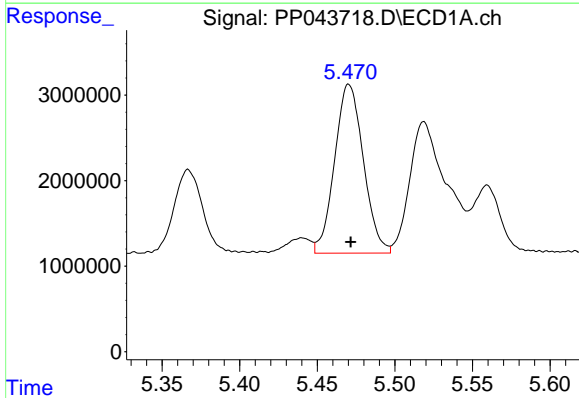
R.T.: 5.173 min
 Delta R.T.: 0.000 min
 Response: 18758816
 Conc: 457.56 ng/ml

Instrument :
 ECD_P
 ClientSampleId :
 AR1248CCC500



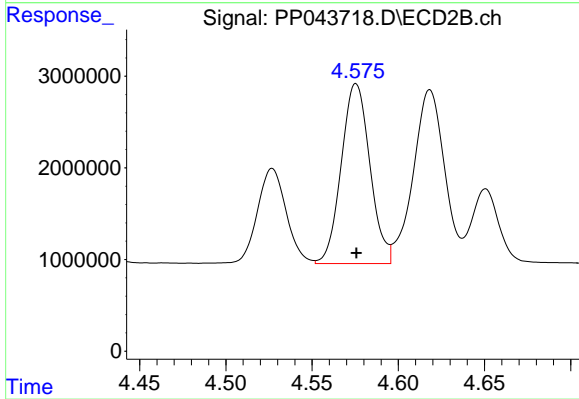
#21 AR-1248-1

R.T.: 4.322 min
 Delta R.T.: 0.000 min
 Response: 17227285
 Conc: 462.47 ng/ml



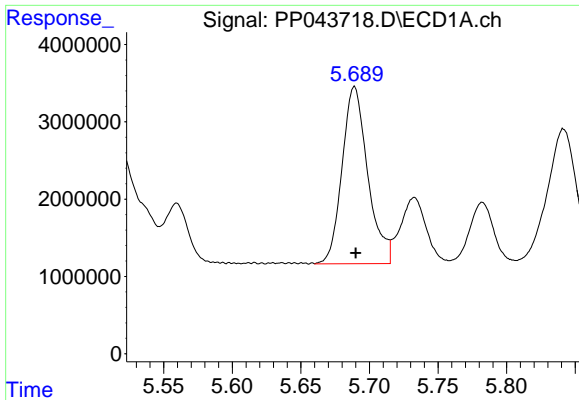
#22 AR-1248-2

R.T.: 5.470 min
 Delta R.T.: -0.001 min
 Response: 25480346
 Conc: 448.50 ng/ml



#22 AR-1248-2

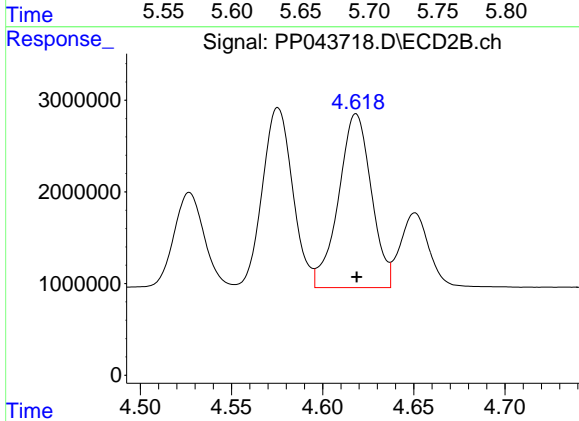
R.T.: 4.575 min
 Delta R.T.: 0.000 min
 Response: 22679634
 Conc: 463.59 ng/ml



#23 AR-1248-3

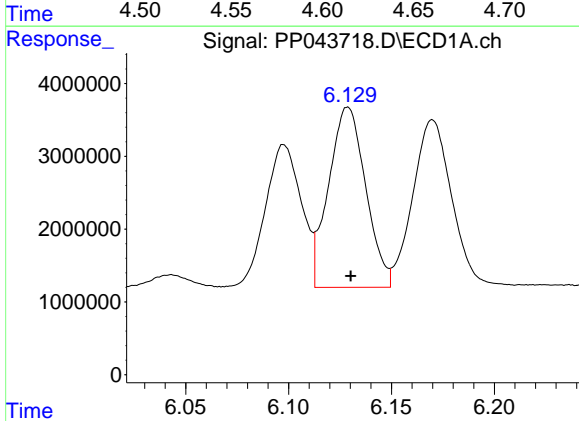
R.T.: 5.689 min
 Delta R.T.: 0.000 min
 Response: 29843157
 Conc: 447.31 ng/ml

Instrument :
 ECD_P
 ClientSampleId :
 AR1248CCC500



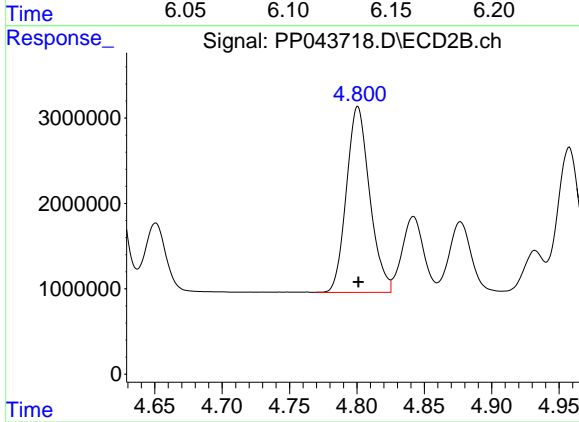
#23 AR-1248-3

R.T.: 4.618 min
 Delta R.T.: 0.000 min
 Response: 23767094
 Conc: 463.16 ng/ml



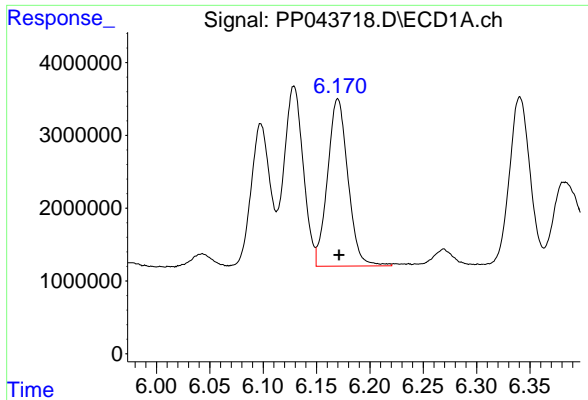
#24 AR-1248-4

R.T.: 6.129 min
 Delta R.T.: -0.001 min
 Response: 31038991
 Conc: 444.26 ng/ml



#24 AR-1248-4

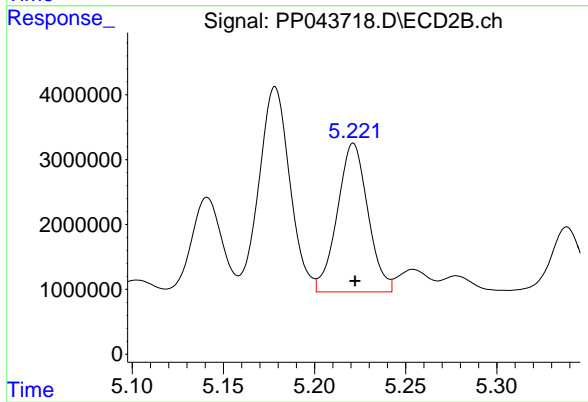
R.T.: 4.801 min
 Delta R.T.: 0.000 min
 Response: 26202927
 Conc: 446.95 ng/ml



#25 AR-1248-5

R.T.: 6.170 min
Delta R.T.: -0.001 min
Response: 30621400
Conc: 442.95 ng/ml

Instrument :
ECD_P
ClientSampleId :
AR1248CCC500



#25 AR-1248-5

R.T.: 5.221 min
Delta R.T.: 0.000 min
Response: 26784024
Conc: 467.45 ng/ml