

Data Path : Z:\pestpcbsrv\HPCHEM1\ECD\_P\Data\PP021422\  
 Data File : PP043719.D  
 Signal(s) : Signal #1: ECD1A.ch Signal #2: ECD2B.ch  
 Acq On : 15 Feb 2022 01:48  
 Operator : YP\AJ  
 Sample : AR1254CCC500  
 Misc :  
 ALS Vial : 6 Sample Multiplier: 1

Instrument :  
 ECD\_P  
 ClientSampleId :  
 AR1254CCC500

Integration File signal 1: autoint1.e  
 Integration File signal 2: autoint2.e  
 Quant Time: Feb 15 02:20:42 2022  
 Quant Method : Z:\pestpcbsrv\HPCHEM1\ECD\_P\methods\PP021022.M  
 Quant Title : GC EXTRACTABLES  
 QLast Update : Fri Feb 11 04:48:05 2022  
 Response via : Initial Calibration  
 Integrator: ChemStation

Volume Inj. : 2 µl  
 Signal #1 Phase : ZB-MR1 Signal #2 Phase: ZB-MR2  
 Signal #1 Info : 30Mx0.32mmx 0.50µ Signal #2 Info : 30M x 0.32mm x 0.25µm

Compound	RT#1	RT#2	Resp#1	Resp#2	ng/ml	ng/ml
-----						
System Monitoring Compounds						
1) SA Tetrachlo...	3.919	3.176	103.8E6	93114032	46.966	49.574
2) SA Decachlor...	10.066	8.553	61086364	76742629	51.425	47.302
Target Compounds						
26) L6 AR-1254-1	6.099	5.177	28955336	44045943	383.228	504.347 #
27) L6 AR-1254-2	6.339	5.338	51576897	37403888	459.816	490.368
28) L6 AR-1254-3	6.739	5.770	54965518	59107970	475.018	482.285
29) L6 AR-1254-4	7.053	6.020	38370129	38329724	480.627	485.648
30) L6 AR-1254-5	7.514	6.472	39321875	55420714	458.494	479.233
-----						

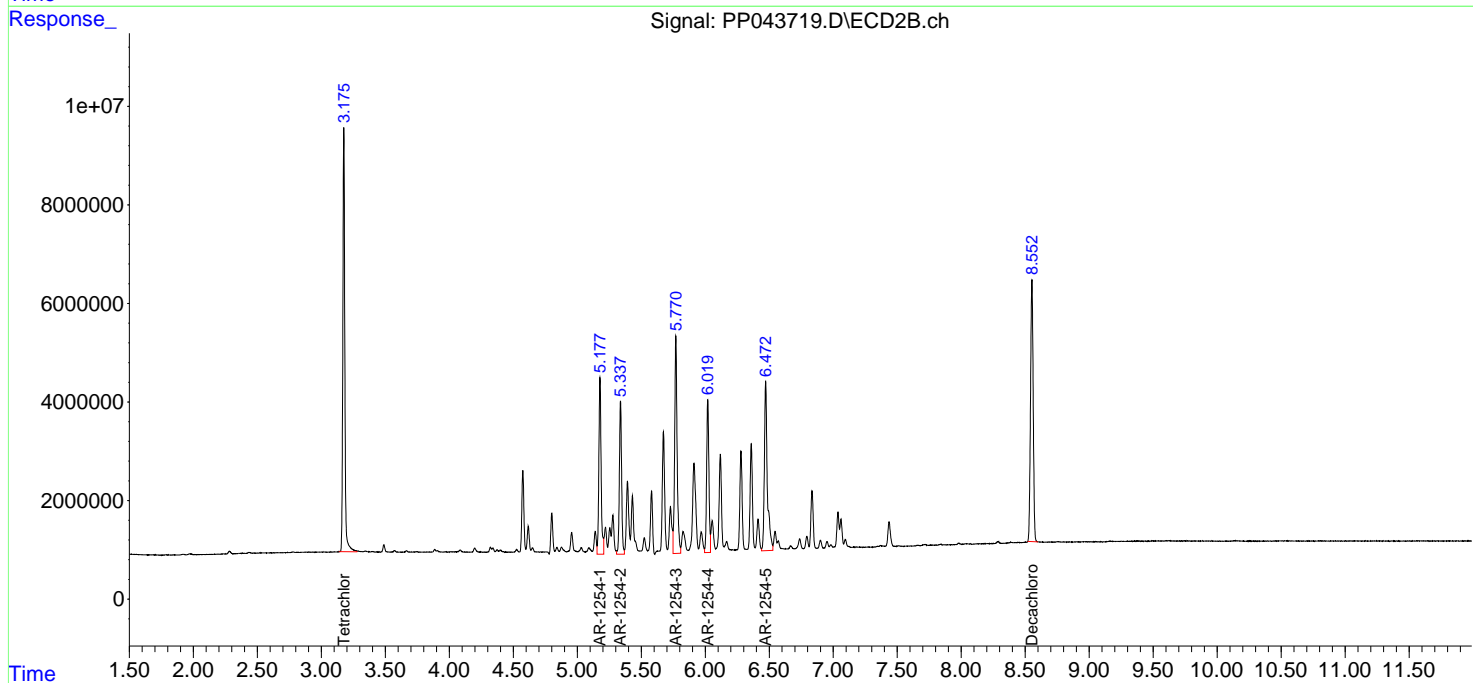
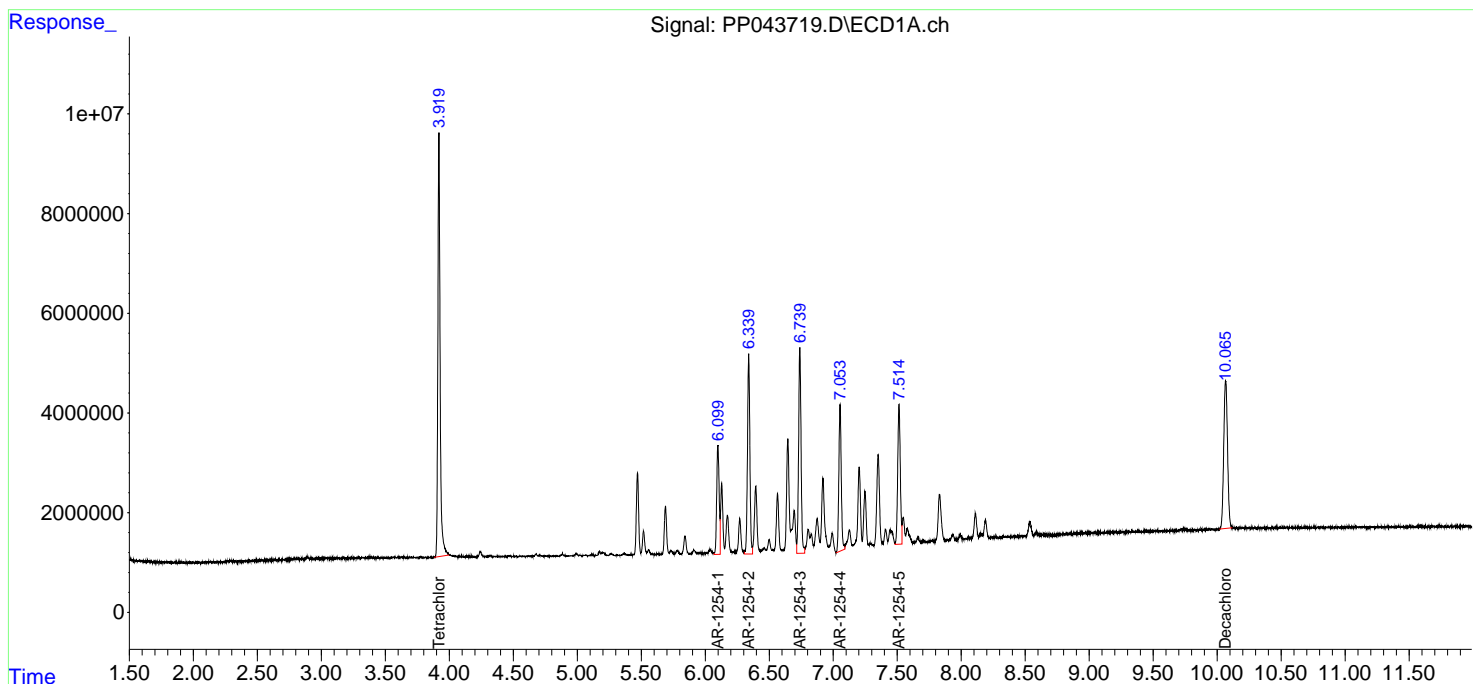
(f)=RT Delta > 1/2 Window (#)=Amounts differ by > 25% (m)=manual int.

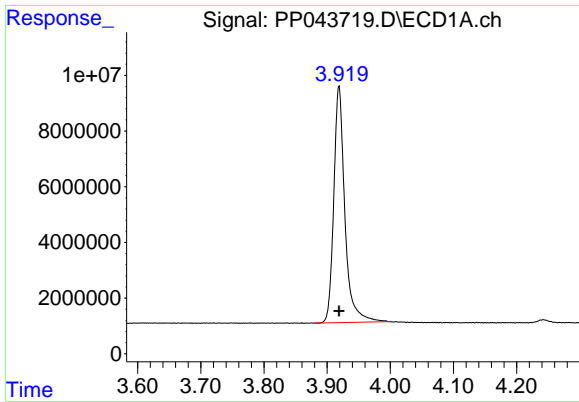
Data Path : Z:\pestpcbsrv\HPCHEM1\ECD\_P\Data\PP021422\  
 Data File : PP043719.D  
 Signal(s) : Signal #1: ECD1A.ch Signal #2: ECD2B.ch  
 Acq On : 15 Feb 2022 01:48  
 Operator : YP\AJ  
 Sample : AR1254CCC500  
 Misc :  
 ALS Vial : 6 Sample Multiplier: 1

Instrument :  
 ECD\_P  
 ClientSampleId :  
 AR1254CCC500

Integration File signal 1: autoint1.e  
 Integration File signal 2: autoint2.e  
 Quant Time: Feb 15 02:20:42 2022  
 Quant Method : Z:\pestpcbsrv\HPCHEM1\ECD\_P\methods\PP021022.M  
 Quant Title : GC EXTRACTABLES  
 QLast Update : Fri Feb 11 04:48:05 2022  
 Response via : Initial Calibration  
 Integrator: ChemStation

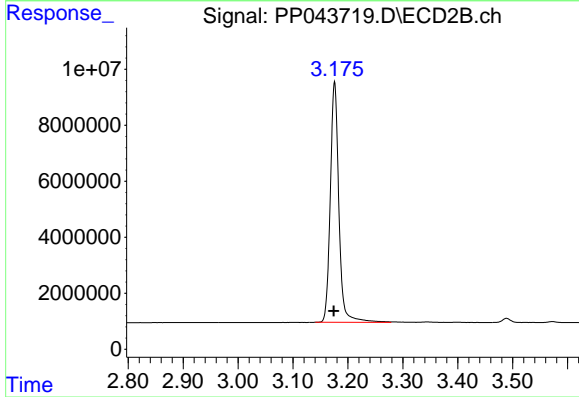
Volume Inj. : 2 µl  
 Signal #1 Phase : ZB-MR1 Signal #2 Phase: ZB-MR2  
 Signal #1 Info : 30Mx0.32mmx 0.50µ Signal #2 Info : 30M x 0.32mm x 0.25µm



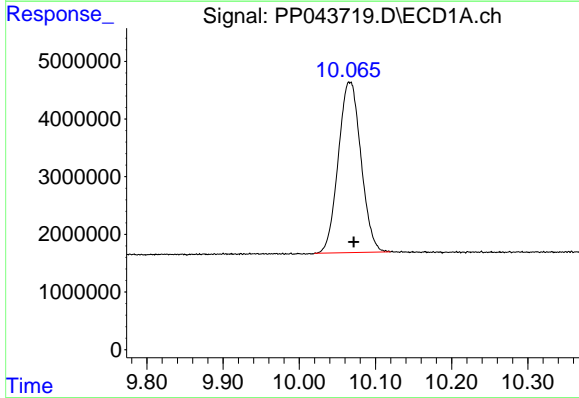


#1 Tetrachloro-m-xylene  
 R.T.: 3.919 min  
 Delta R.T.: 0.000 min  
 Response: 103843590  
 Conc: 46.97 ng/ml

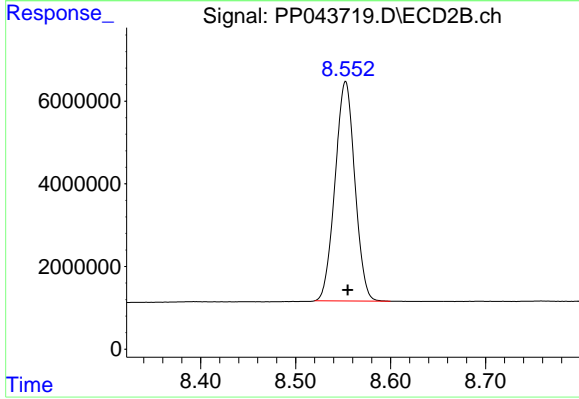
Instrument :  
 ECD\_P  
 ClientSampleId :  
 AR1254CCC500



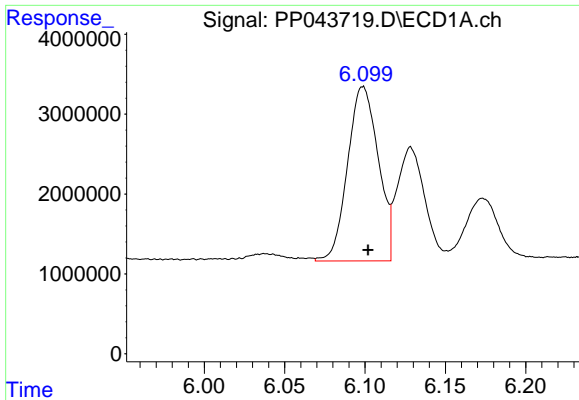
#1 Tetrachloro-m-xylene  
 R.T.: 3.176 min  
 Delta R.T.: 0.002 min  
 Response: 93114032  
 Conc: 49.57 ng/ml



#2 Decachlorobiphenyl  
 R.T.: 10.066 min  
 Delta R.T.: -0.005 min  
 Response: 61086364  
 Conc: 51.42 ng/ml



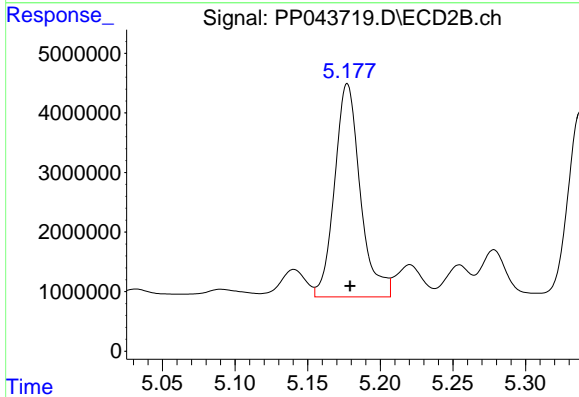
#2 Decachlorobiphenyl  
 R.T.: 8.553 min  
 Delta R.T.: -0.002 min  
 Response: 76742629  
 Conc: 47.30 ng/ml



#26 AR-1254-1

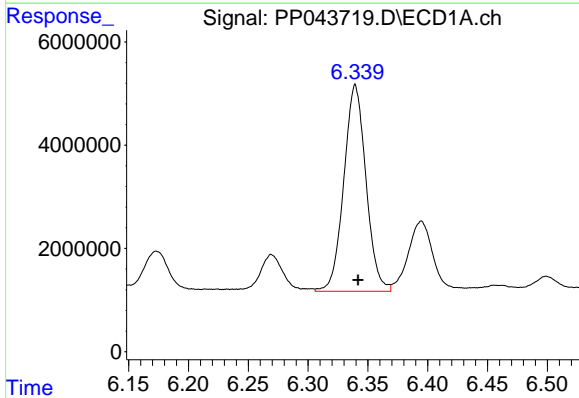
R.T.: 6.099 min  
 Delta R.T.: -0.003 min  
 Response: 28955336  
 Conc: 383.23 ng/ml

Instrument :  
 ECD\_P  
 ClientSampleId :  
 AR1254CCC500



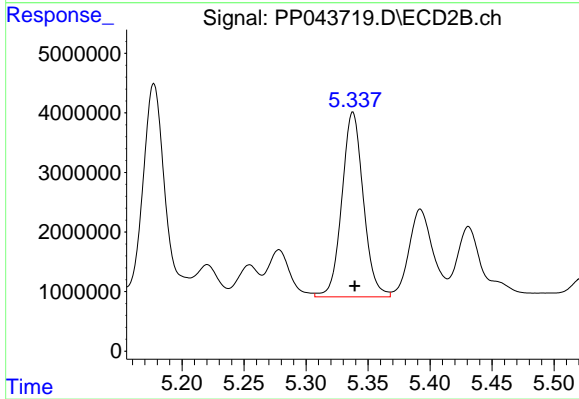
#26 AR-1254-1

R.T.: 5.177 min  
 Delta R.T.: -0.002 min  
 Response: 44045943  
 Conc: 504.35 ng/ml



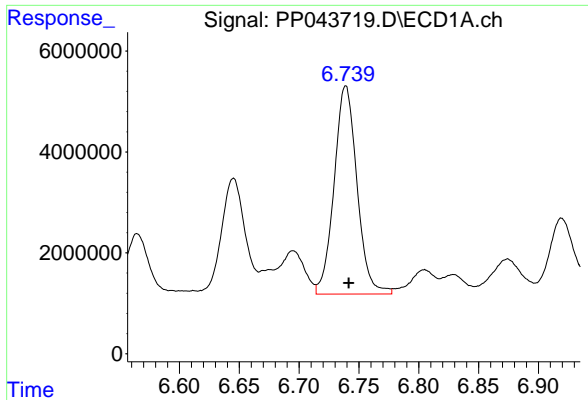
#27 AR-1254-2

R.T.: 6.339 min  
 Delta R.T.: -0.002 min  
 Response: 51576897  
 Conc: 459.82 ng/ml



#27 AR-1254-2

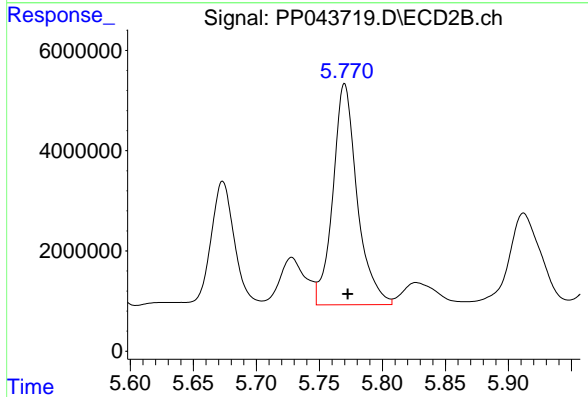
R.T.: 5.338 min  
 Delta R.T.: -0.002 min  
 Response: 37403888  
 Conc: 490.37 ng/ml



#28 AR-1254-3

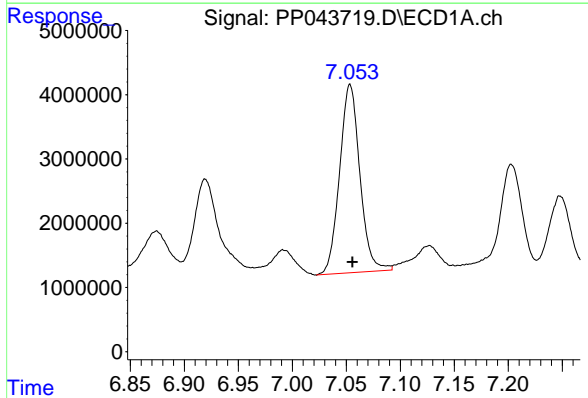
R.T.: 6.739 min  
 Delta R.T.: -0.003 min  
 Response: 54965518  
 Conc: 475.02 ng/ml

Instrument :  
 ECD\_P  
 ClientSampleId :  
 AR1254CCC500



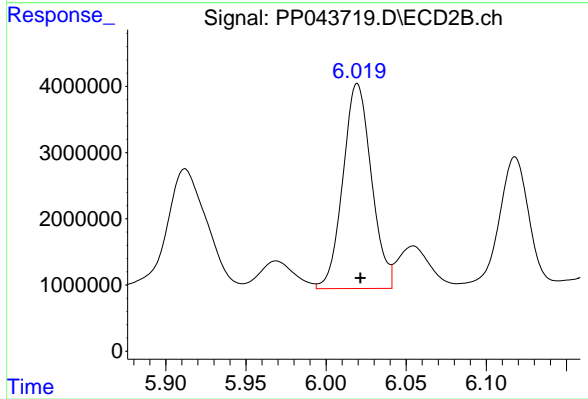
#28 AR-1254-3

R.T.: 5.770 min  
 Delta R.T.: -0.002 min  
 Response: 59107970  
 Conc: 482.28 ng/ml



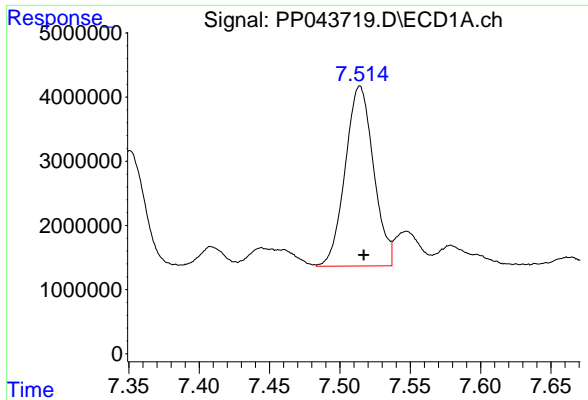
#29 AR-1254-4

R.T.: 7.053 min  
 Delta R.T.: -0.002 min  
 Response: 38370129  
 Conc: 480.63 ng/ml



#29 AR-1254-4

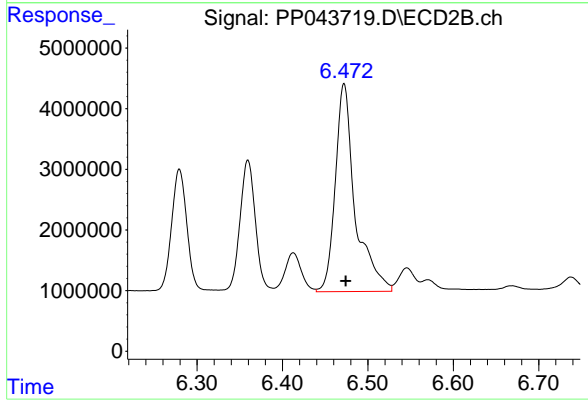
R.T.: 6.020 min  
 Delta R.T.: -0.002 min  
 Response: 38329724  
 Conc: 485.65 ng/ml



#30 AR-1254-5

R.T.: 7.514 min  
 Delta R.T.: -0.003 min  
 Response: 39321875  
 Conc: 458.49 ng/ml

Instrument :  
 ECD\_P  
 ClientSampleId :  
 AR1254CCC500



#30 AR-1254-5

R.T.: 6.472 min  
 Delta R.T.: -0.002 min  
 Response: 55420714  
 Conc: 479.23 ng/ml