

Data Path : Z:\pestpcbsrv\HPCHEM1\ECD_P\Data\PP011625\
 Data File : PP069165.D
 Signal(s) : Signal #1: ECD1A.ch Signal #2: ECD2B.ch
 Acq On : 17 Jan 2025 00:37
 Operator : YP\AJ
 Sample : AR1242CCC500
 Misc :
 ALS Vial : 4 Sample Multiplier: 1

Instrument :
 ECD_P
 ClientSampleId :

Integration File signal 1: autoint1.e
 Integration File signal 2: autoint2.e
 Quant Time: Jan 17 05:35:46 2025
 Quant Method : Z:\pestpcbsrv\HPCHEM1\ECD_P\methods\PP010625.M
 Quant Title : GC EXTRACTABLES
 QLast Update : Tue Jan 07 11:05:55 2025
 Response via : Initial Calibration
 Integrator: ChemStation

Volume Inj. : 2 µl
 Signal #1 Phase : ZB-MR1 Signal #2 Phase: ZB-MR2
 Signal #1 Info : 30Mx0.32mmx 0.50µ Signal #2 Info : 30M x 0.32mm x 0.25µm

Compound	RT#1	RT#2	Resp#1	Resp#2	ng/ml	ng/ml
System Monitoring Compounds						
1) SA Tetrachlo...	4.667	3.980	70474874	49126777	50.654	50.326
2) SA Decachlor...	10.514	9.102	50373682	51898086	45.119	43.201
Target Compounds						
3) L1 AR-1016-1	5.827	5.080	17938136	14589768	400.085	431.233
4) L1 AR-1016-2	5.849	5.100	27118589	20062826	403.468	398.606
5) L1 AR-1016-3	5.913	5.279	16401703	11309581	388.772	417.378
6) L1 AR-1016-4	6.010	5.319	13768221	9350959	393.550	379.490
7) L1 AR-1016-5	6.304	5.537	13624394	11974415	393.869	396.559
8) L2 AR-1221-1	4.863	4.192	2277949	1530016	128.081	113.406
9) L2 AR-1221-2	4.956	4.282	3101803	2497432	240.974	240.642
10) L2 AR-1221-3	5.031	4.358	10300512	8578733	265.697	276.295
11) L3 AR-1232-1	5.031	4.358	10300512	8578733	347.025	348.294
12) L3 AR-1232-2	5.561	5.100	13809197	20062826	821.525	838.794
13) L3 AR-1232-3	5.849	5.279	27118589	11309581	865.382	900.432
14) L3 AR-1232-4	6.010	5.363	13768221	11454733	880.140	955.201
15) L3 AR-1232-5	6.100	5.537	11615066	11974415	964.311	932.864
16) L4 AR-1242-1	5.827	5.080	17938136	14589768	484.010	497.145
17) L4 AR-1242-2	5.849	5.100	27118589	20062826	472.726	476.525
18) L4 AR-1242-3	5.913	5.279	16401703	11309581	476.726	486.074
19) L4 AR-1242-4	6.010	5.363	13768221	11454733	478.797	470.061
20) L4 AR-1242-5	6.744	5.891	14702796	13830259	468.490	476.355
21) L5 AR-1248-1	5.827	5.080	17938136	14589768	609.567	634.361
22) L5 AR-1248-2	6.100	5.319	11615066	9350959	269.361	273.887
23) L5 AR-1248-3	6.304	5.363	13624394	11454733	288.790	324.195
24) L5 AR-1248-4	6.705	5.537	14221186	11974415	264.823	290.911
25) L5 AR-1248-5	6.744	5.933	14702796	11367437	282.652	293.837
26) L6 AR-1254-1	6.679	5.891	9926502	13830259	186.405	229.999
27) L6 AR-1254-2	6.901	6.039	12142919	3475518	149.348	64.964 #
28) L6 AR-1254-3	7.263	6.447	5092494	4394913	63.200	53.388
29) L6 AR-1254-4	7.545	6.676	3803890	3212469	62.462	71.388
30) L6 AR-1254-5	7.965	7.095	1325326	1155679	20.736	15.489 #
31) L7 AR-1260-1	7.434	6.594	701753	1575334	11.186	27.495 #
32) L7 AR-1260-2	7.680	6.766	739051	480319	9.759	7.291 #
33) L7 AR-1260-3	0.000	6.920	0	495605	N.D.	7.698 #
34) L7 AR-1260-4	8.257	7.434	565482	313136	8.541	5.590 #
35) L7 AR-1260-5	0.000	7.665	0	63359	N.D.	0.516 #
36) L8 AR-1262-1	8.257	7.095f	565482	1155679	7.146	14.473 #
37) L8 AR-1262-2	0.000	7.434	0	313136	N.D.	4.478 #
38) L8 AR-1262-3	0.000	7.898	0	181280	N.D.	3.148 #
39) L8 AR-1262-4	0.000	7.984	0	96015	N.D.	0.952 #
41) L9 AR-1268-1	0.000	7.898	0	181280	N.D.	1.117 #
42) L9 AR-1268-2	0.000	7.984	0	96015	N.D.	0.649 #

Data Path : Z:\pestpcbsrv\HPCHEM1\ECD_P\Data\PP011625\
 Data File : PP069165.D
 Signal(s) : Signal #1: ECD1A.ch Signal #2: ECD2B.ch
 Acq On : 17 Jan 2025 00:37
 Operator : YP\AJ
 Sample : AR1242CCC500
 Misc :
 ALS Vial : 4 Sample Multiplier: 1

Instrument :
 ECD_P
 ClientSampleId :

Integration File signal 1: autoint1.e
 Integration File signal 2: autoint2.e
 Quant Time: Jan 17 05:35:46 2025
 Quant Method : Z:\pestpcbsrv\HPCHEM1\ECD_P\methods\PP010625.M
 Quant Title : GC EXTRACTABLES
 QLast Update : Tue Jan 07 11:05:55 2025
 Response via : Initial Calibration
 Integrator: ChemStation

Volume Inj. : 2 µl
 Signal #1 Phase : ZB-MR1 Signal #2 Phase: ZB-MR2
 Signal #1 Info : 30Mx0.32mmx 0.50µ Signal #2 Info : 30M x 0.32mm x 0.25µm

	Compound	RT#1	RT#2	Resp#1	Resp#2	ng/ml	ng/ml
43)	L9 AR-1268-3	0.000	8.198	0	264158	N.D.	1.988 #
45)	L9 AR-1268-5	0.000	8.821	0	379361	N.D.	0.973 #

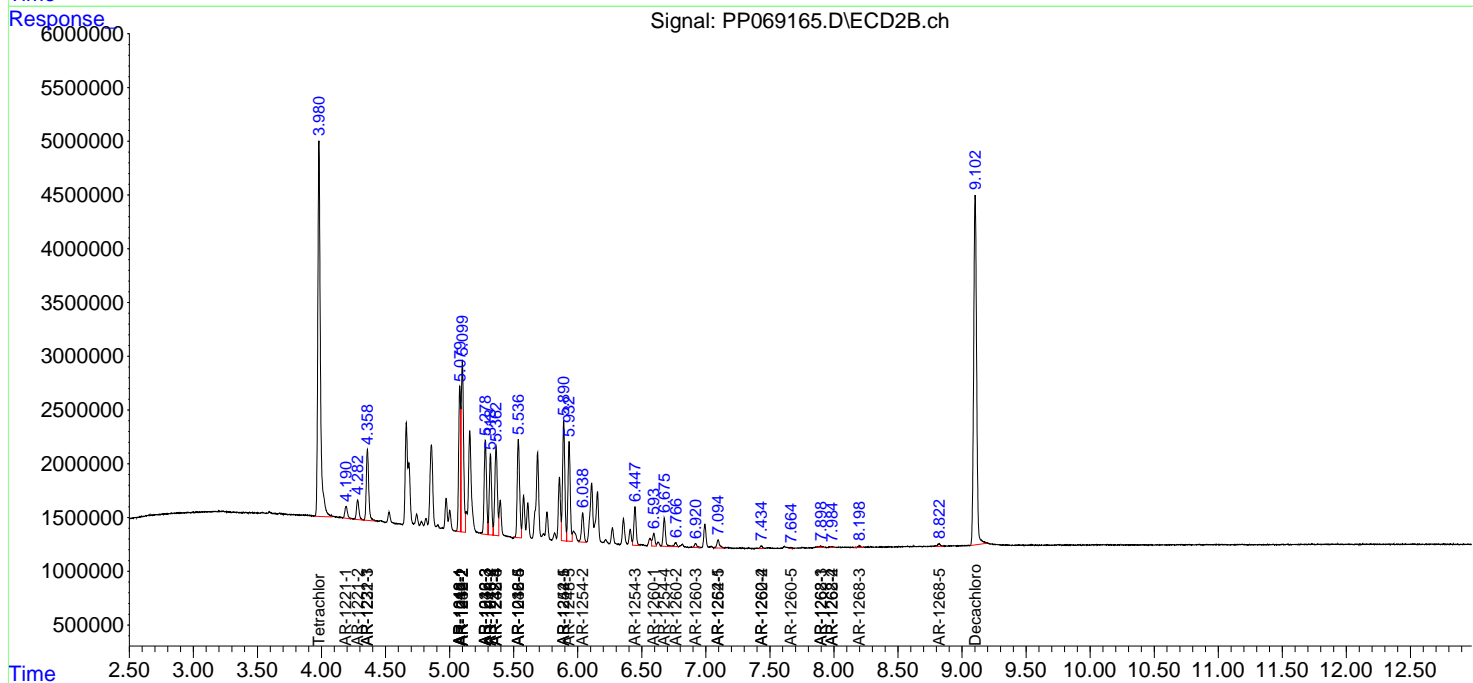
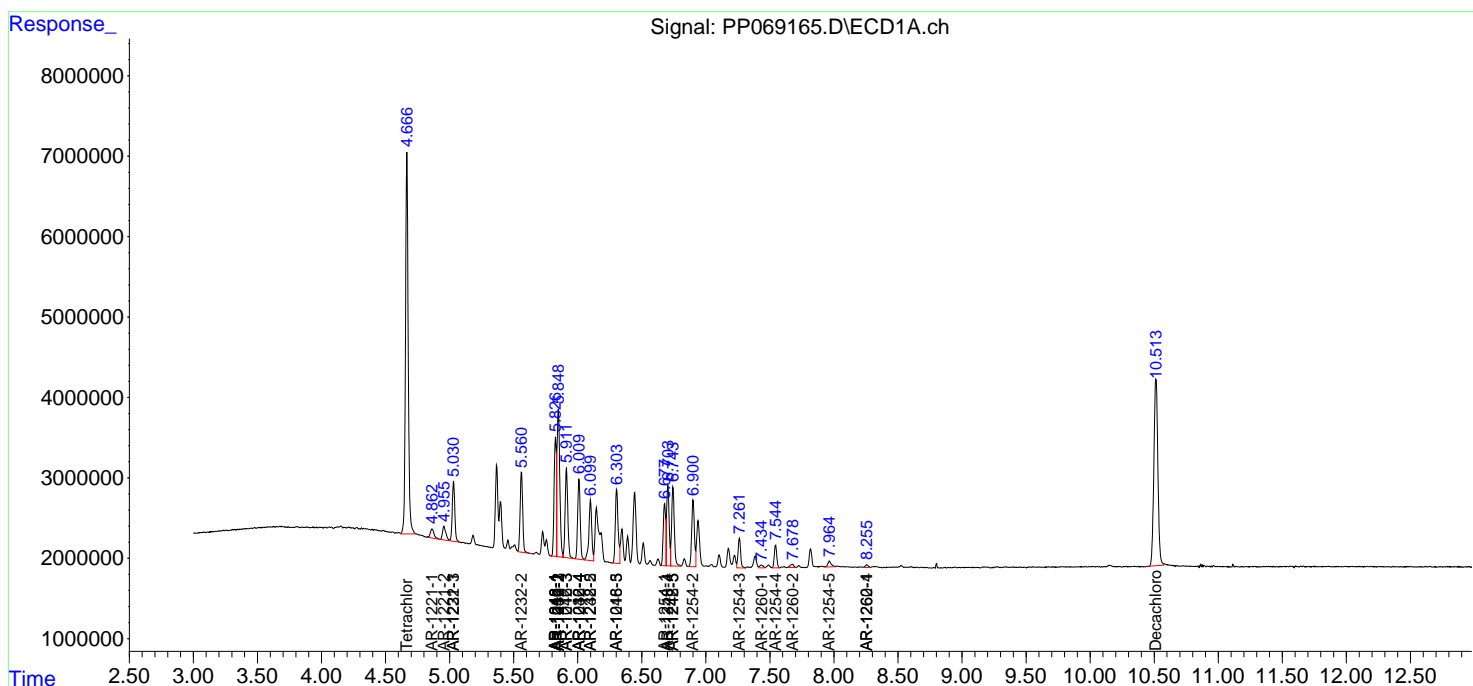
(f)=RT Delta > 1/2 Window (#)=Amounts differ by > 25% (m)=manual int.

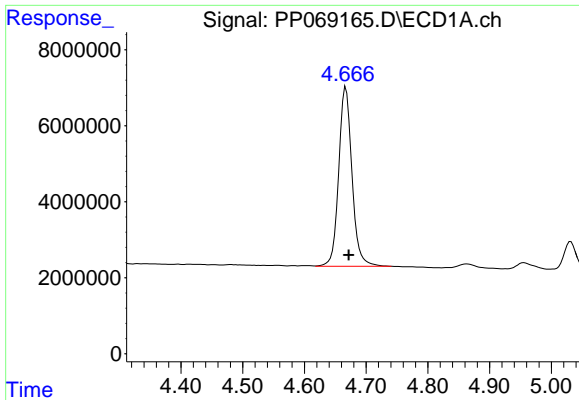
Data Path : Z:\pestpcbsrv\HPCHEM1\ECD_P\Data\PP011625\
 Data File : PP069165.D
 Signal(s) : Signal #1: ECD1A.ch Signal #2: ECD2B.ch
 Acq On : 17 Jan 2025 00:37
 Operator : YP\AJ
 Sample : AR1242CCC500
 Misc :
 ALS Vial : 4 Sample Multiplier: 1

Instrument :
 ECD_P
 ClientSampleId :

Integration File signal 1: autoint1.e
 Integration File signal 2: autoint2.e
 Quant Time: Jan 17 05:35:46 2025
 Quant Method : Z:\pestpcbsrv\HPCHEM1\ECD_P\methods\PP010625.M
 Quant Title : GC EXTRACTABLES
 QLast Update : Tue Jan 07 11:05:55 2025
 Response via : Initial Calibration
 Integrator: ChemStation

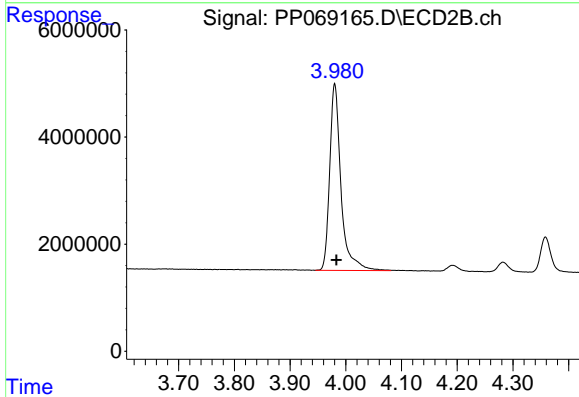
Volume Inj. : 2 µl
 Signal #1 Phase : ZB-MR1 Signal #2 Phase: ZB-MR2
 Signal #1 Info : 30Mx0.32mmx 0.50µ Signal #2 Info : 30M x 0.32mm x 0.25µm



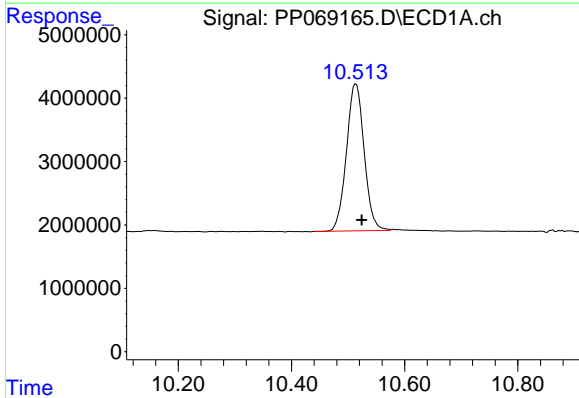


#1 Tetrachloro-m-xylene
R.T.: 4.667 min
Delta R.T.: -0.005 min
Response: 70474874
Conc: 50.65 ng/ml

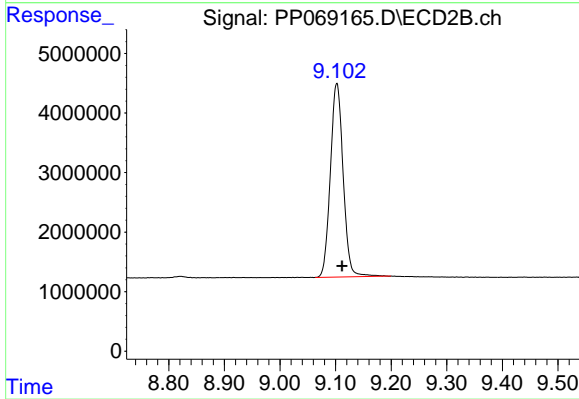
Instrument :
ECD_P
ClientSampleId :



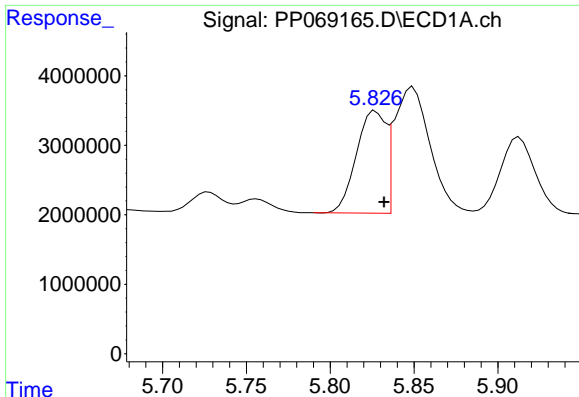
#1 Tetrachloro-m-xylene
R.T.: 3.980 min
Delta R.T.: -0.003 min
Response: 49126777
Conc: 50.33 ng/ml



#2 Decachlorobiphenyl
R.T.: 10.514 min
Delta R.T.: -0.010 min
Response: 50373682
Conc: 45.12 ng/ml



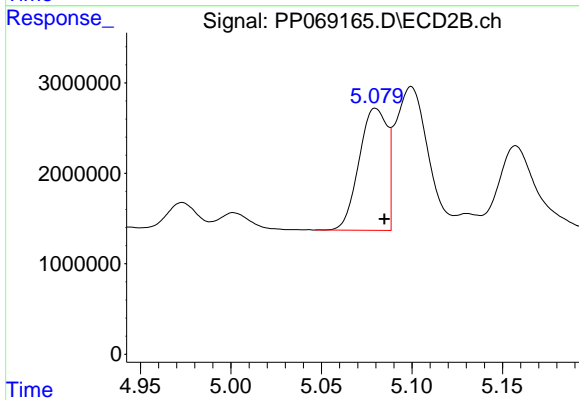
#2 Decachlorobiphenyl
R.T.: 9.102 min
Delta R.T.: -0.009 min
Response: 51898086
Conc: 43.20 ng/ml



#3 AR-1016-1

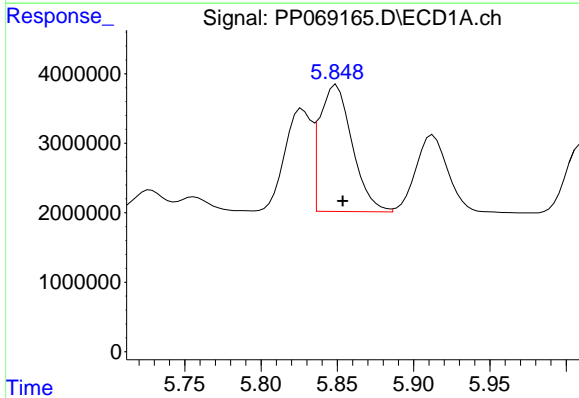
R.T.: 5.827 min
 Delta R.T.: -0.005 min
 Response: 17938136
 Conc: 400.08 ng/ml

Instrument :
 ECD_P
 ClientSampleId :



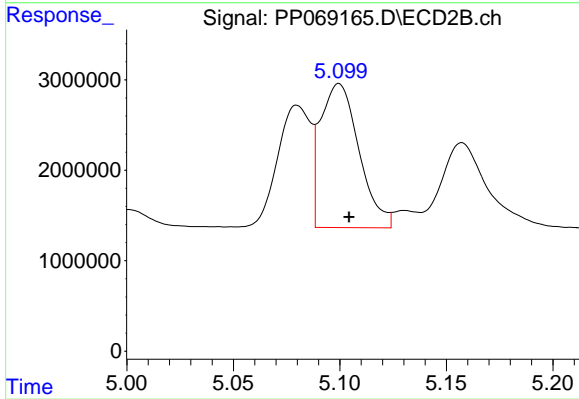
#3 AR-1016-1

R.T.: 5.080 min
 Delta R.T.: -0.005 min
 Response: 14589768
 Conc: 431.23 ng/ml



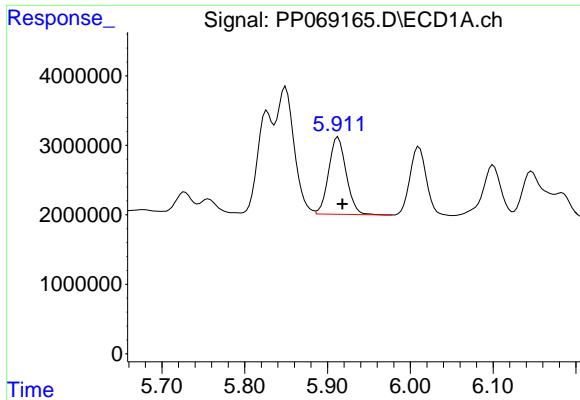
#4 AR-1016-2

R.T.: 5.849 min
 Delta R.T.: -0.004 min
 Response: 27118589
 Conc: 403.47 ng/ml



#4 AR-1016-2

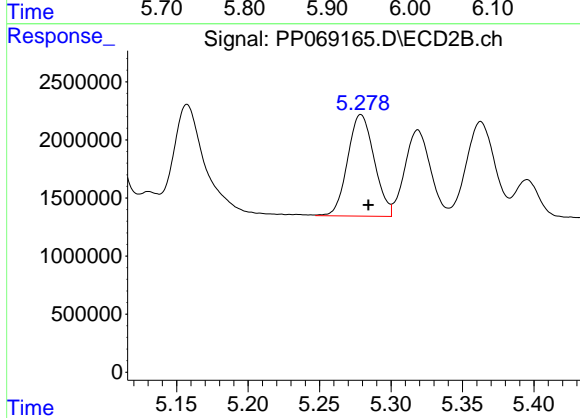
R.T.: 5.100 min
 Delta R.T.: -0.005 min
 Response: 20062826
 Conc: 398.61 ng/ml



#5 AR-1016-3

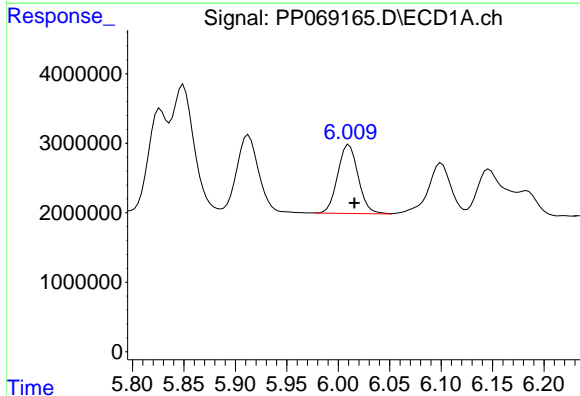
R.T.: 5.913 min
 Delta R.T.: -0.005 min
 Response: 16401703
 Conc: 388.77 ng/ml

Instrument :
 ECD_P
 ClientSampleId :



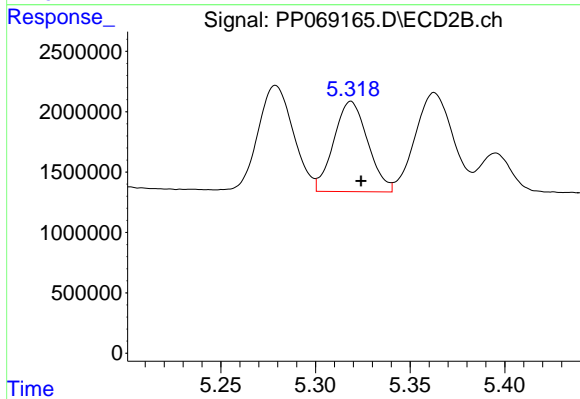
#5 AR-1016-3

R.T.: 5.279 min
 Delta R.T.: -0.005 min
 Response: 11309581
 Conc: 417.38 ng/ml



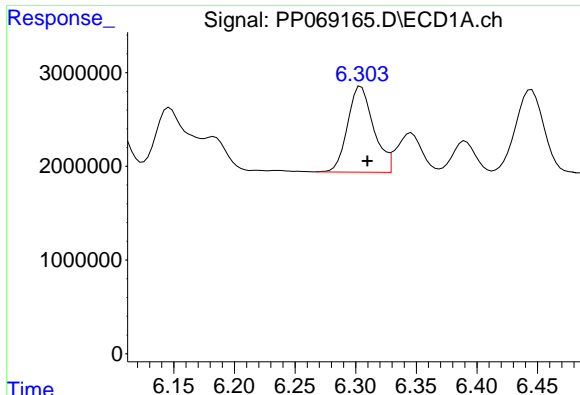
#6 AR-1016-4

R.T.: 6.010 min
 Delta R.T.: -0.005 min
 Response: 13768221
 Conc: 393.55 ng/ml



#6 AR-1016-4

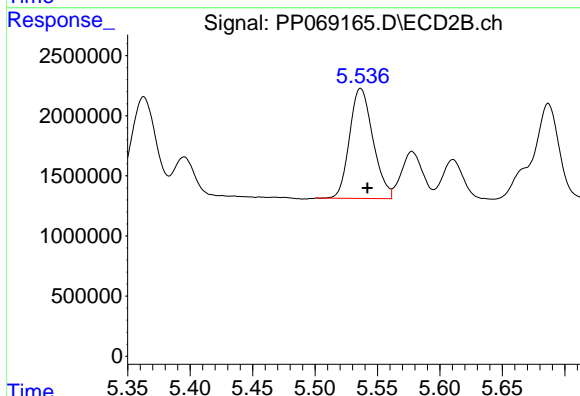
R.T.: 5.319 min
 Delta R.T.: -0.005 min
 Response: 9350959
 Conc: 379.49 ng/ml



#7 AR-1016-5

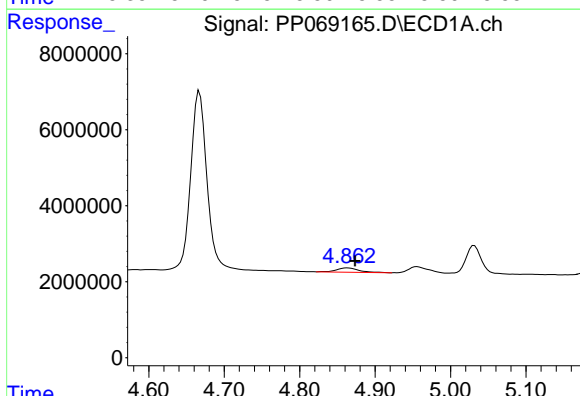
R.T.: 6.304 min
 Delta R.T.: -0.005 min
 Response: 13624394
 Conc: 393.87 ng/ml

Instrument :
 ECD_P
 ClientSampleId :



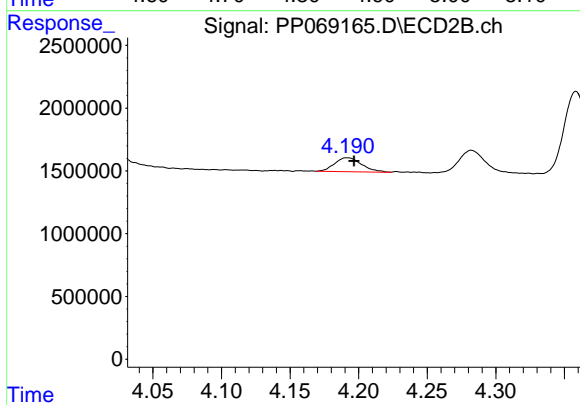
#7 AR-1016-5

R.T.: 5.537 min
 Delta R.T.: -0.005 min
 Response: 11974415
 Conc: 396.56 ng/ml



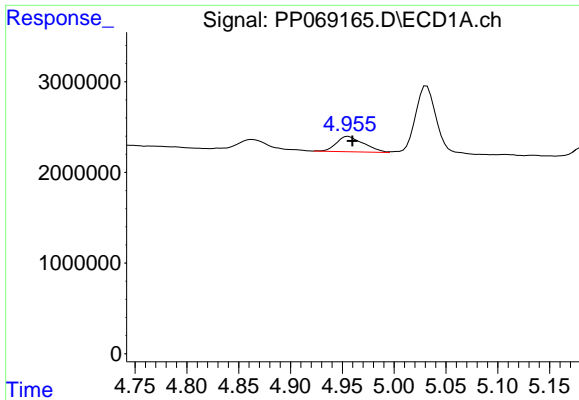
#8 AR-1221-1

R.T.: 4.863 min
 Delta R.T.: -0.010 min
 Response: 2277949
 Conc: 128.08 ng/ml



#8 AR-1221-1

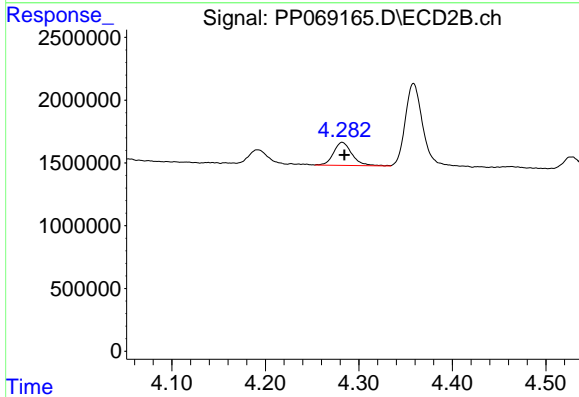
R.T.: 4.192 min
 Delta R.T.: -0.005 min
 Response: 1530016
 Conc: 113.41 ng/ml



#9 AR-1221-2

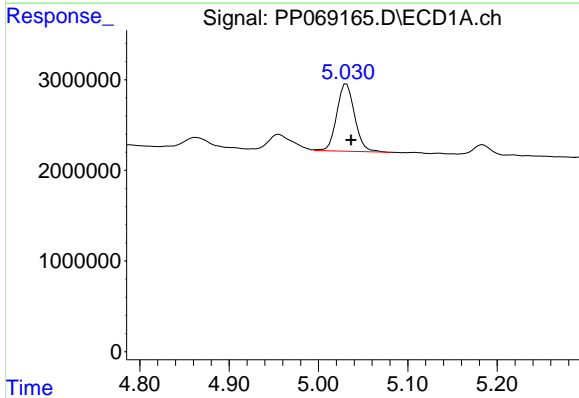
R.T.: 4.956 min
 Delta R.T.: -0.004 min
 Response: 3101803
 Conc: 240.97 ng/ml

Instrument :
 ECD_P
 ClientSampleId :



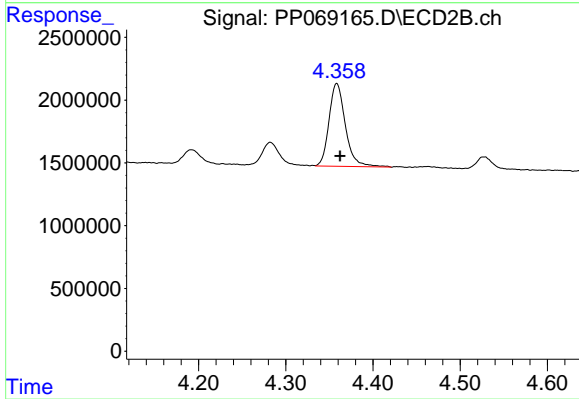
#9 AR-1221-2

R.T.: 4.282 min
 Delta R.T.: -0.003 min
 Response: 2497432
 Conc: 240.64 ng/ml



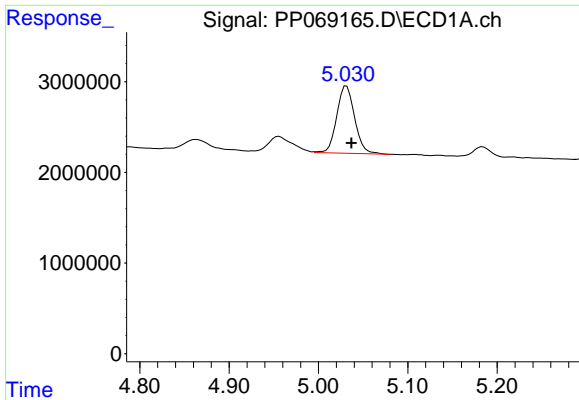
#10 AR-1221-3

R.T.: 5.031 min
 Delta R.T.: -0.005 min
 Response: 10300512
 Conc: 265.70 ng/ml



#10 AR-1221-3

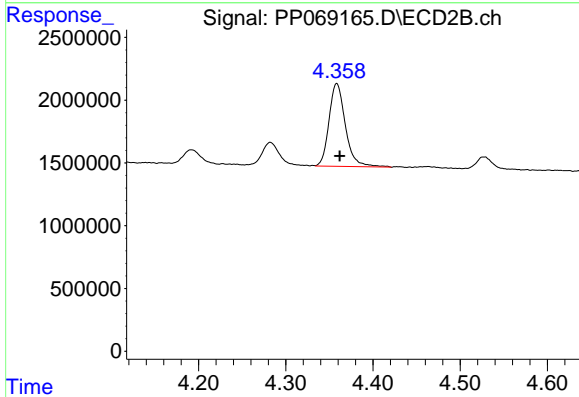
R.T.: 4.358 min
 Delta R.T.: -0.004 min
 Response: 8578733
 Conc: 276.29 ng/ml



#11 AR-1232-1

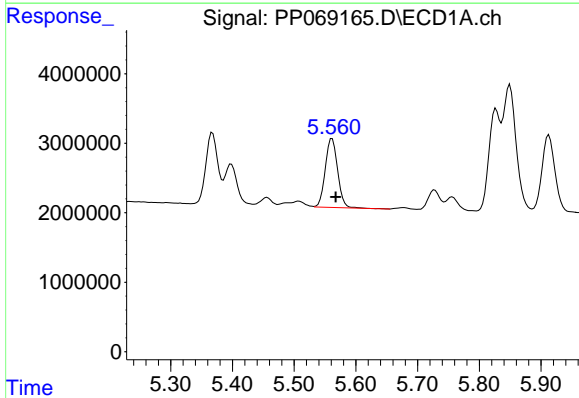
R.T.: 5.031 min
 Delta R.T.: -0.005 min
 Response: 10300512
 Conc: 347.02 ng/ml

Instrument :
 ECD_P
 ClientSampleId :



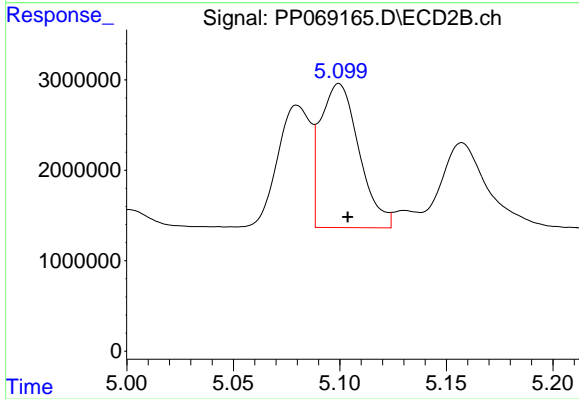
#11 AR-1232-1

R.T.: 4.358 min
 Delta R.T.: -0.003 min
 Response: 8578733
 Conc: 348.29 ng/ml



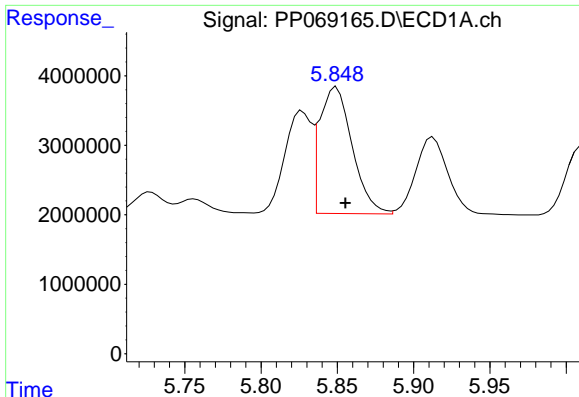
#12 AR-1232-2

R.T.: 5.561 min
 Delta R.T.: -0.006 min
 Response: 13809197
 Conc: 821.52 ng/ml



#12 AR-1232-2

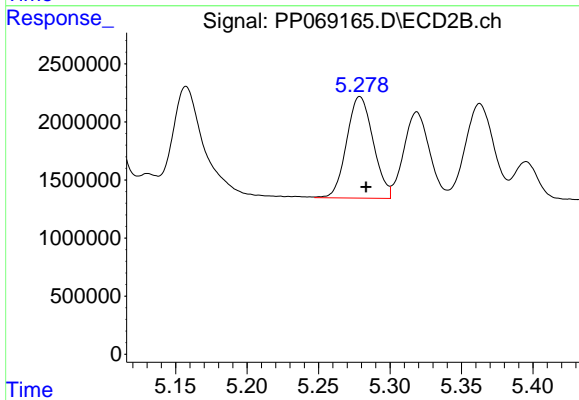
R.T.: 5.100 min
 Delta R.T.: -0.004 min
 Response: 20062826
 Conc: 838.79 ng/ml



#13 AR-1232-3

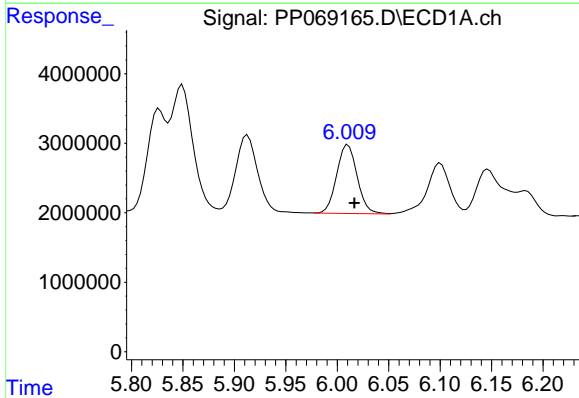
R.T.: 5.849 min
 Delta R.T.: -0.006 min
 Response: 27118589
 Conc: 865.38 ng/ml

Instrument :
 ECD_P
 ClientSampleId :



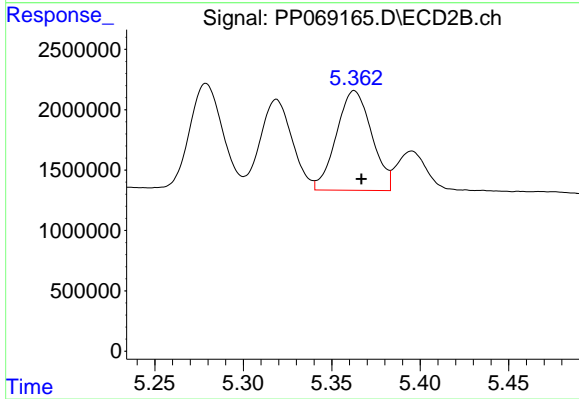
#13 AR-1232-3

R.T.: 5.279 min
 Delta R.T.: -0.004 min
 Response: 11309581
 Conc: 900.43 ng/ml



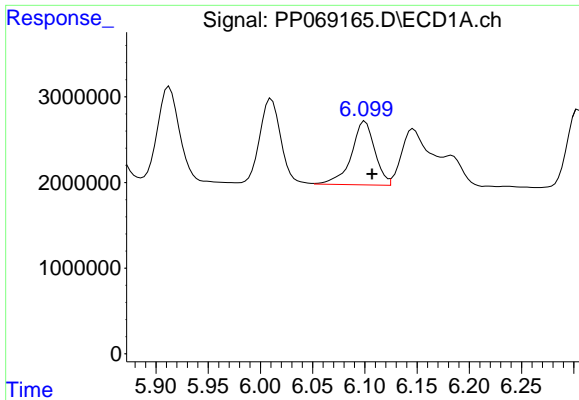
#14 AR-1232-4

R.T.: 6.010 min
 Delta R.T.: -0.006 min
 Response: 13768221
 Conc: 880.14 ng/ml



#14 AR-1232-4

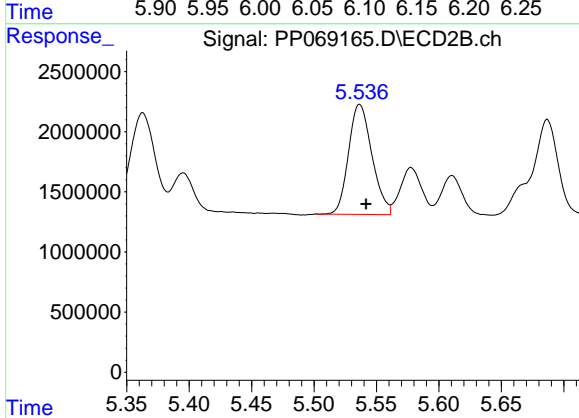
R.T.: 5.363 min
 Delta R.T.: -0.004 min
 Response: 11454733
 Conc: 955.20 ng/ml



#15 AR-1232-5

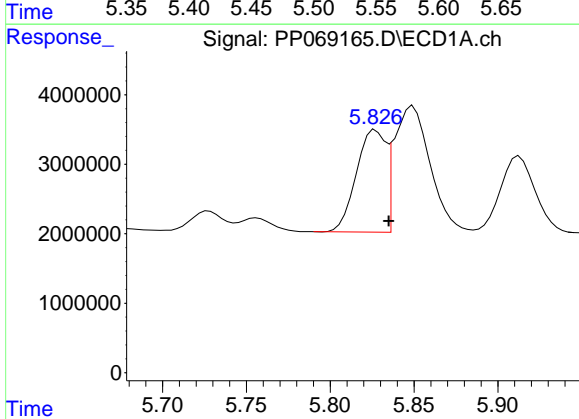
R.T.: 6.100 min
 Delta R.T.: -0.007 min
 Response: 11615066
 Conc: 964.31 ng/ml

Instrument :
 ECD_P
 ClientSampleId :



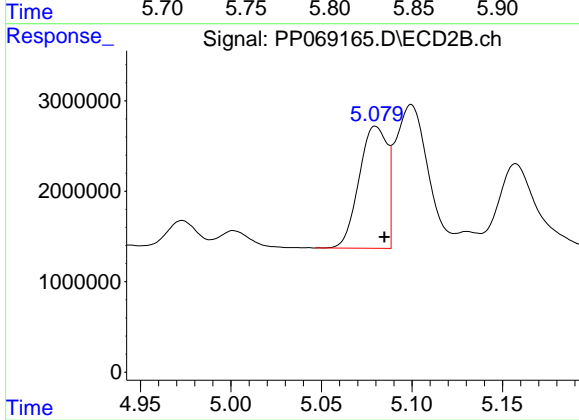
#15 AR-1232-5

R.T.: 5.537 min
 Delta R.T.: -0.005 min
 Response: 11974415
 Conc: 932.86 ng/ml



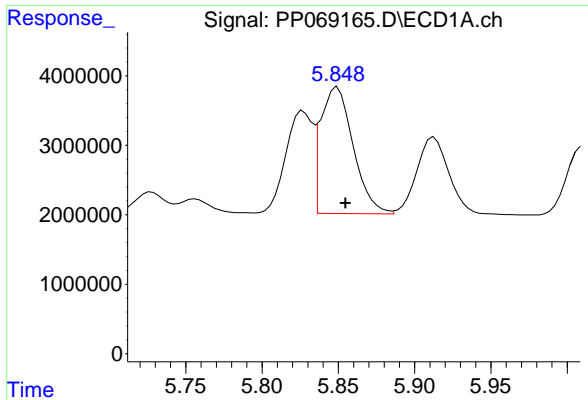
#16 AR-1242-1

R.T.: 5.827 min
 Delta R.T.: -0.008 min
 Response: 17938136
 Conc: 484.01 ng/ml



#16 AR-1242-1

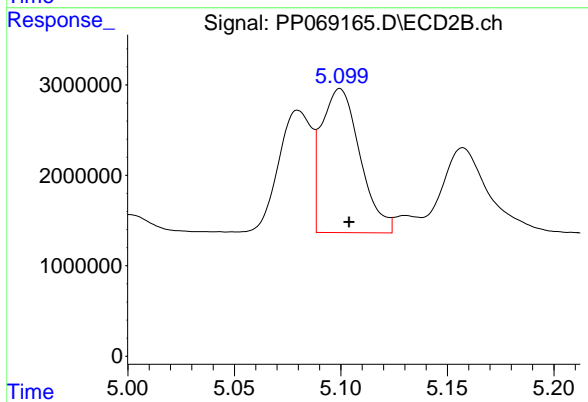
R.T.: 5.080 min
 Delta R.T.: -0.005 min
 Response: 14589768
 Conc: 497.15 ng/ml



#17 AR-1242-2

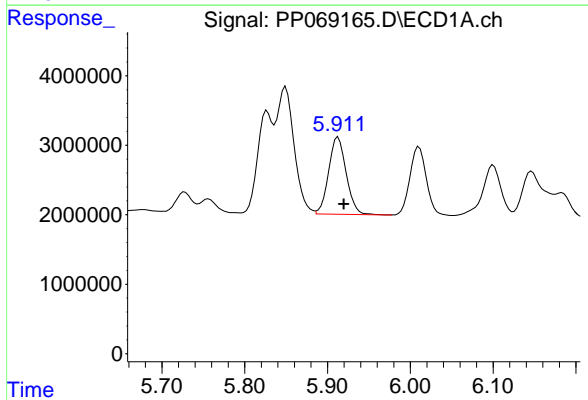
R.T.: 5.849 min
 Delta R.T.: -0.005 min
 Response: 27118589
 Conc: 472.73 ng/ml

Instrument :
 ECD_P
 ClientSampleId :



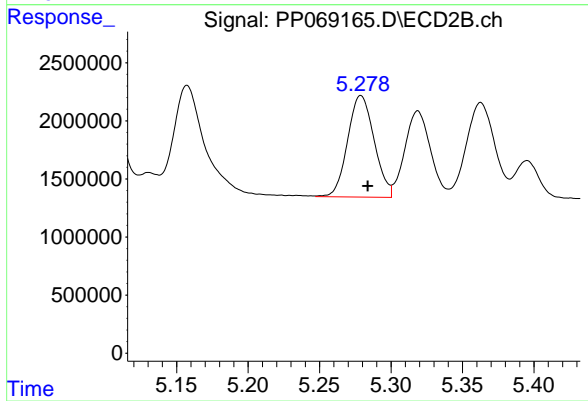
#17 AR-1242-2

R.T.: 5.100 min
 Delta R.T.: -0.004 min
 Response: 20062826
 Conc: 476.52 ng/ml



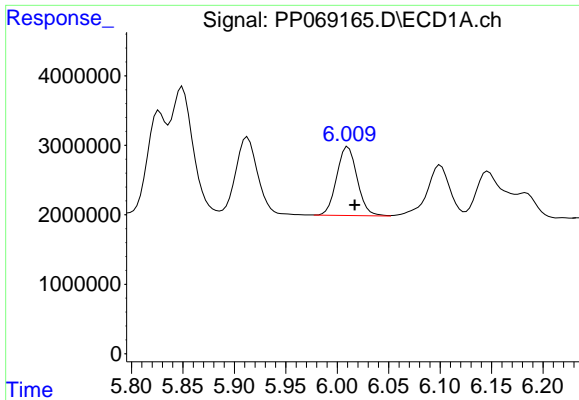
#18 AR-1242-3

R.T.: 5.913 min
 Delta R.T.: -0.007 min
 Response: 16401703
 Conc: 476.73 ng/ml



#18 AR-1242-3

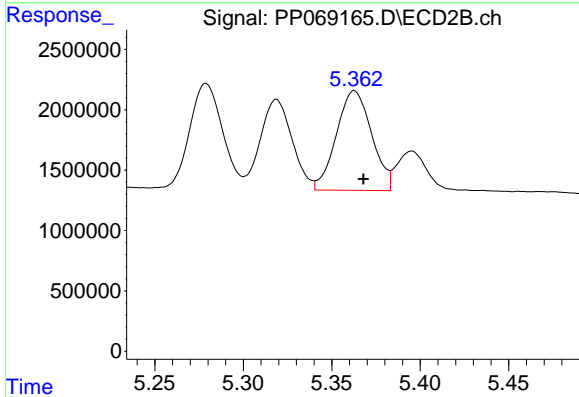
R.T.: 5.279 min
 Delta R.T.: -0.005 min
 Response: 11309581
 Conc: 486.07 ng/ml



#19 AR-1242-4

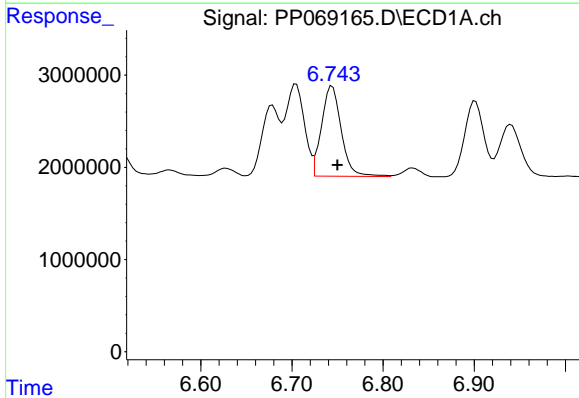
R.T.: 6.010 min
 Delta R.T.: -0.006 min
 Response: 13768221
 Conc: 478.80 ng/ml

Instrument :
 ECD_P
 ClientSampleId :



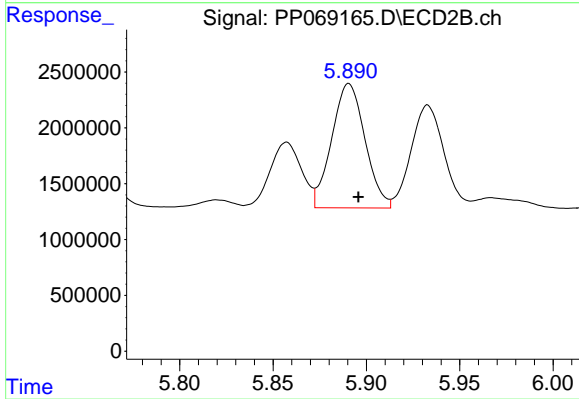
#19 AR-1242-4

R.T.: 5.363 min
 Delta R.T.: -0.005 min
 Response: 11454733
 Conc: 470.06 ng/ml



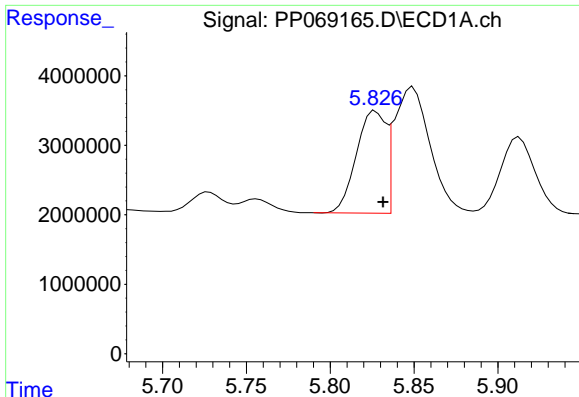
#20 AR-1242-5

R.T.: 6.744 min
 Delta R.T.: -0.006 min
 Response: 14702796
 Conc: 468.49 ng/ml



#20 AR-1242-5

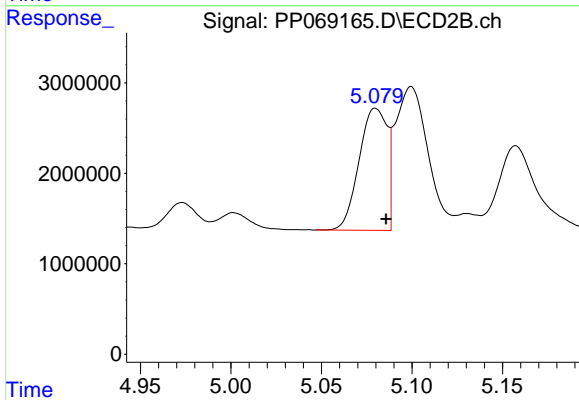
R.T.: 5.891 min
 Delta R.T.: -0.005 min
 Response: 13830259
 Conc: 476.35 ng/ml



#21 AR-1248-1

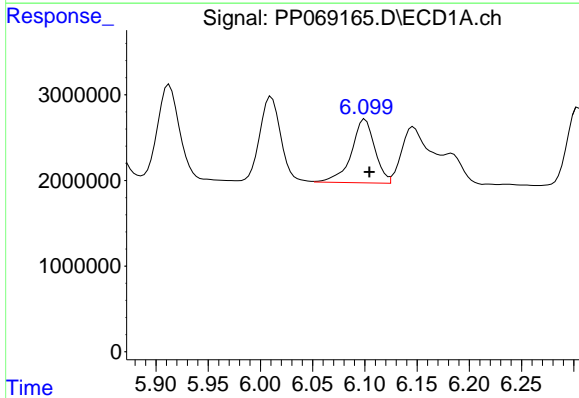
R.T.: 5.827 min
 Delta R.T.: -0.005 min
 Response: 17938136
 Conc: 609.57 ng/ml

Instrument :
 ECD_P
 ClientSampleId :



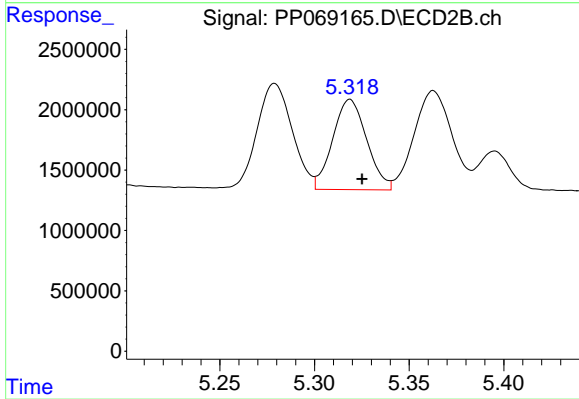
#21 AR-1248-1

R.T.: 5.080 min
 Delta R.T.: -0.006 min
 Response: 14589768
 Conc: 634.36 ng/ml



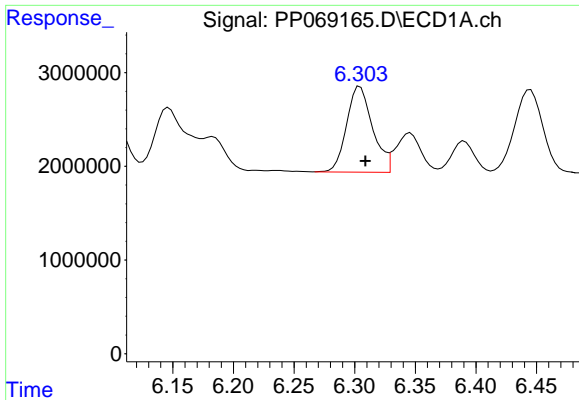
#22 AR-1248-2

R.T.: 6.100 min
 Delta R.T.: -0.004 min
 Response: 11615066
 Conc: 269.36 ng/ml



#22 AR-1248-2

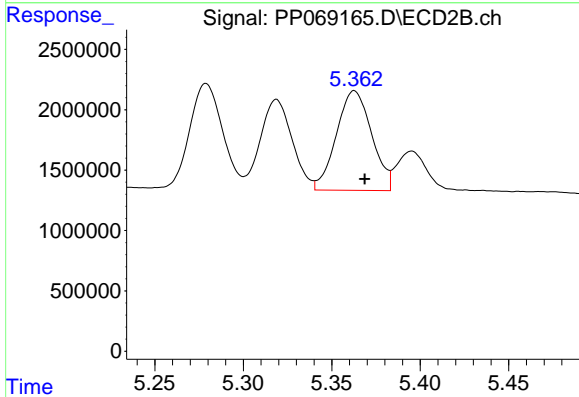
R.T.: 5.319 min
 Delta R.T.: -0.006 min
 Response: 9350959
 Conc: 273.89 ng/ml



#23 AR-1248-3

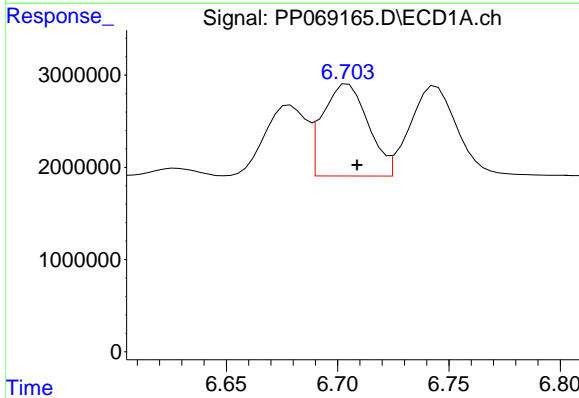
R.T.: 6.304 min
 Delta R.T.: -0.005 min
 Response: 13624394
 Conc: 288.79 ng/ml

Instrument :
 ECD_P
 ClientSampleId :



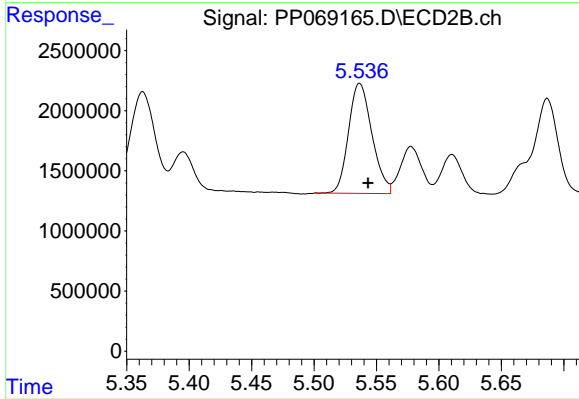
#23 AR-1248-3

R.T.: 5.363 min
 Delta R.T.: -0.006 min
 Response: 11454733
 Conc: 324.19 ng/ml



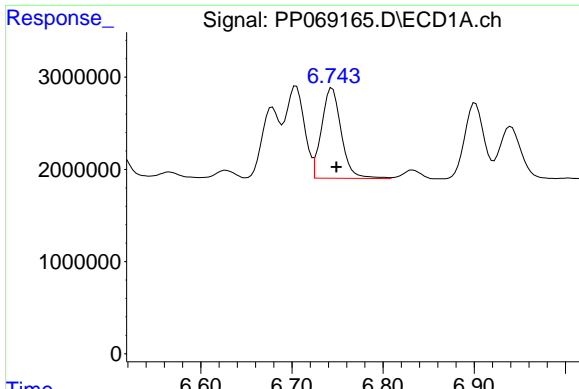
#24 AR-1248-4

R.T.: 6.705 min
 Delta R.T.: -0.004 min
 Response: 14221186
 Conc: 264.82 ng/ml



#24 AR-1248-4

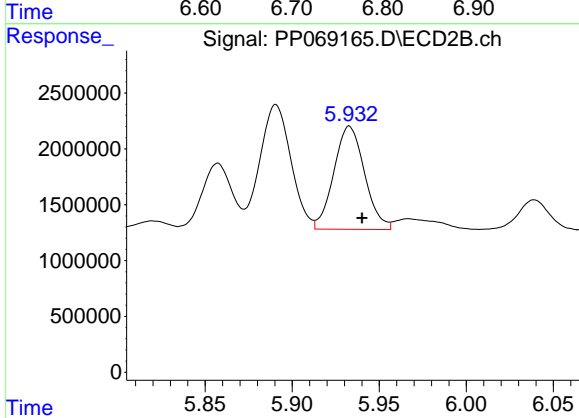
R.T.: 5.537 min
 Delta R.T.: -0.007 min
 Response: 11974415
 Conc: 290.91 ng/ml



#25 AR-1248-5

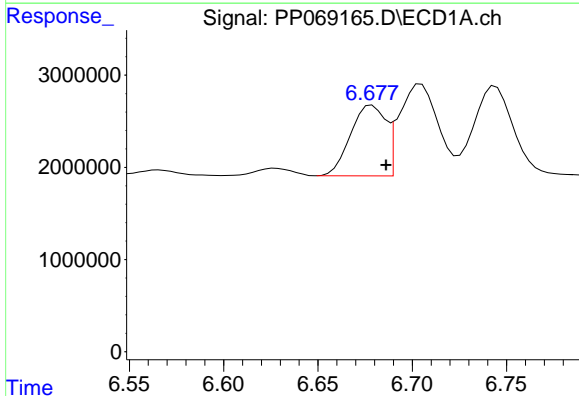
R.T.: 6.744 min
 Delta R.T.: -0.005 min
 Response: 14702796
 Conc: 282.65 ng/ml

Instrument :
 ECD_P
 ClientSampleId :



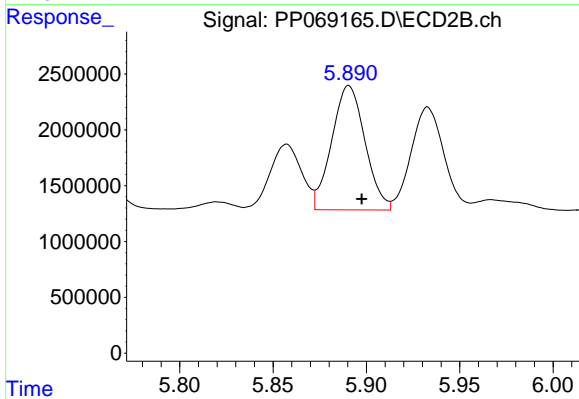
#25 AR-1248-5

R.T.: 5.933 min
 Delta R.T.: -0.007 min
 Response: 11367437
 Conc: 293.84 ng/ml



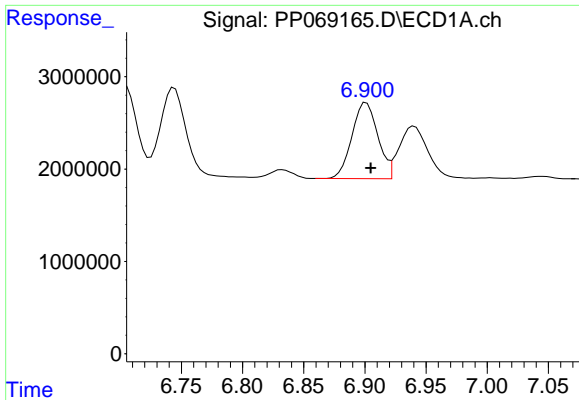
#26 AR-1254-1

R.T.: 6.679 min
 Delta R.T.: -0.007 min
 Response: 9926502
 Conc: 186.41 ng/ml



#26 AR-1254-1

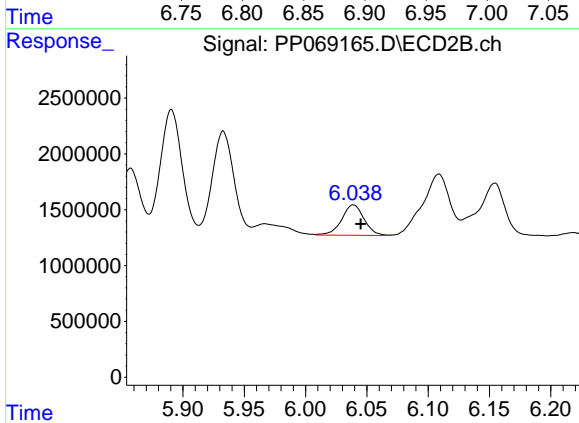
R.T.: 5.891 min
 Delta R.T.: -0.007 min
 Response: 13830259
 Conc: 230.00 ng/ml



#27 AR-1254-2

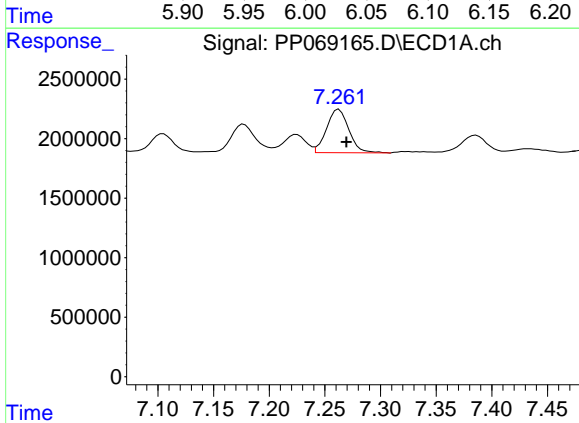
R.T.: 6.901 min
 Delta R.T.: -0.003 min
 Response: 12142919
 Conc: 149.35 ng/ml

Instrument :
 ECD_P
 ClientSampleId :



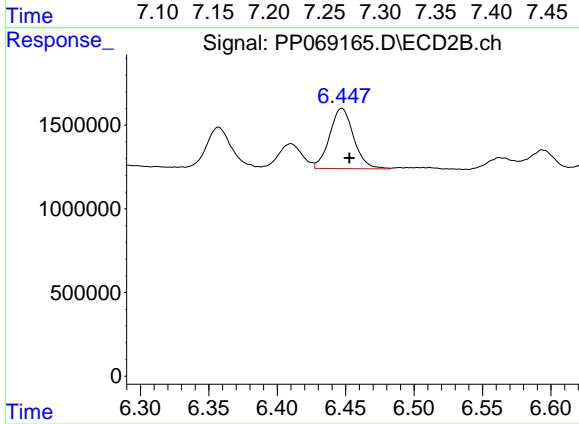
#27 AR-1254-2

R.T.: 6.039 min
 Delta R.T.: -0.006 min
 Response: 3475518
 Conc: 64.96 ng/ml



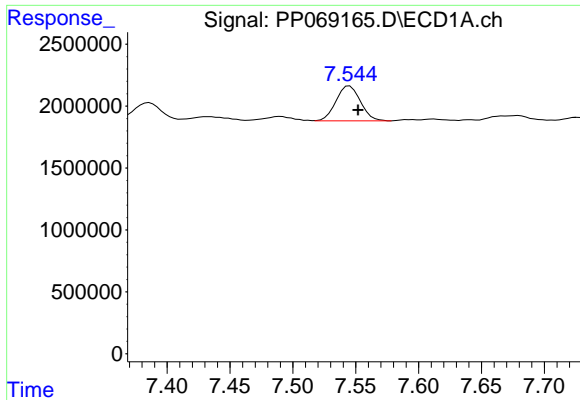
#28 AR-1254-3

R.T.: 7.263 min
 Delta R.T.: -0.007 min
 Response: 5092494
 Conc: 63.20 ng/ml



#28 AR-1254-3

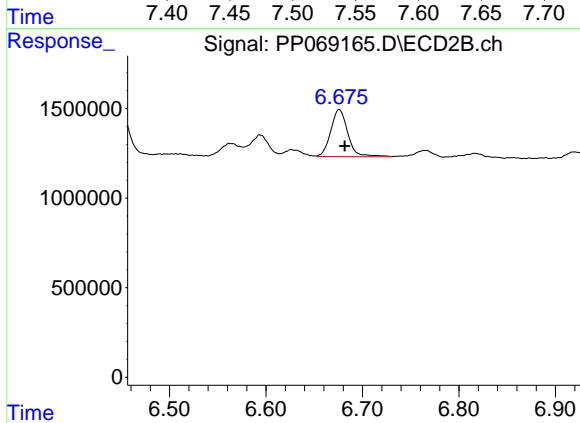
R.T.: 6.447 min
 Delta R.T.: -0.006 min
 Response: 4394913
 Conc: 53.39 ng/ml



#29 AR-1254-4

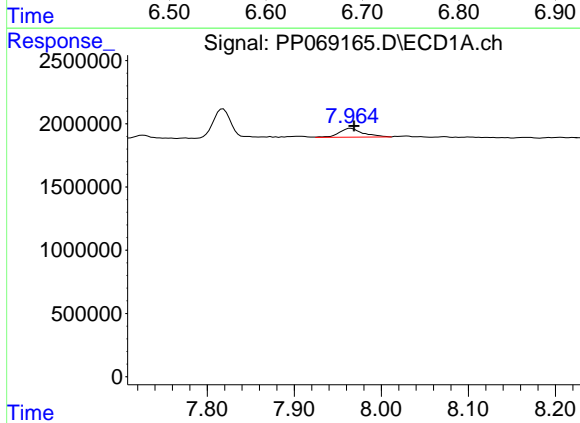
R.T.: 7.545 min
 Delta R.T.: -0.007 min
 Response: 3803890
 Conc: 62.46 ng/ml

Instrument :
 ECD_P
 ClientSampleId :



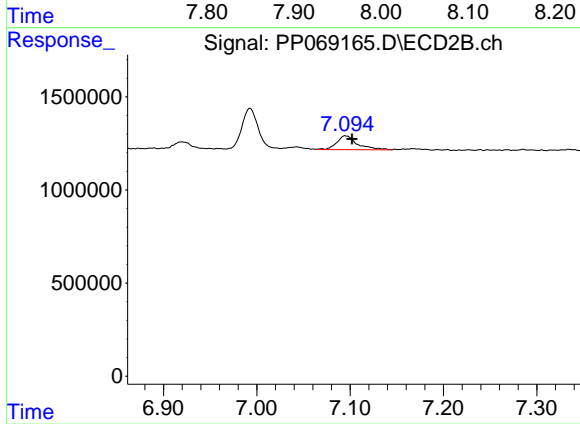
#29 AR-1254-4

R.T.: 6.676 min
 Delta R.T.: -0.006 min
 Response: 3212469
 Conc: 71.39 ng/ml



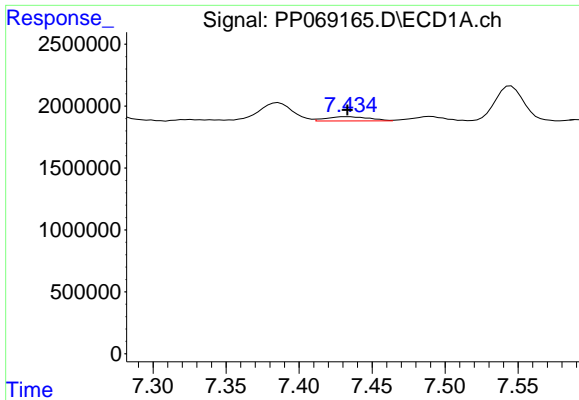
#30 AR-1254-5

R.T.: 7.965 min
 Delta R.T.: -0.004 min
 Response: 1325326
 Conc: 20.74 ng/ml



#30 AR-1254-5

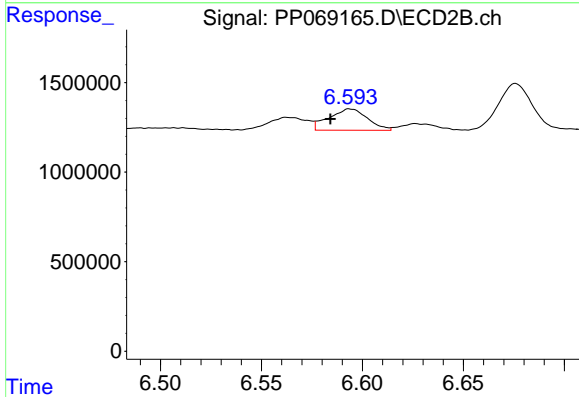
R.T.: 7.095 min
 Delta R.T.: -0.007 min
 Response: 1155679
 Conc: 15.49 ng/ml



#31 AR-1260-1

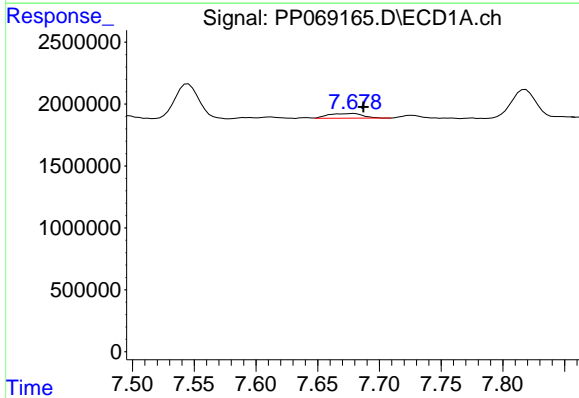
R.T.: 7.434 min
 Delta R.T.: 0.000 min
 Response: 701753
 Conc: 11.19 ng/ml

Instrument :
 ECD_P
 ClientSampleId :



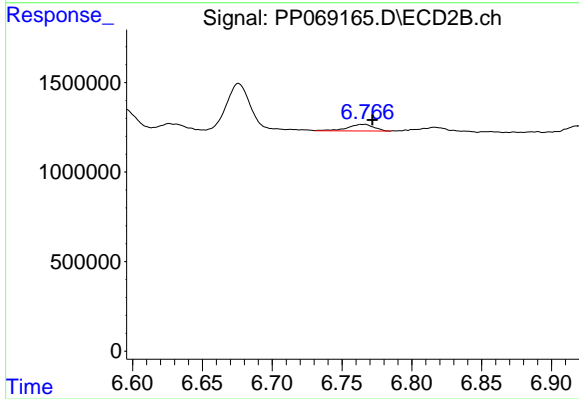
#31 AR-1260-1

R.T.: 6.594 min
 Delta R.T.: 0.010 min
 Response: 1575334
 Conc: 27.50 ng/ml



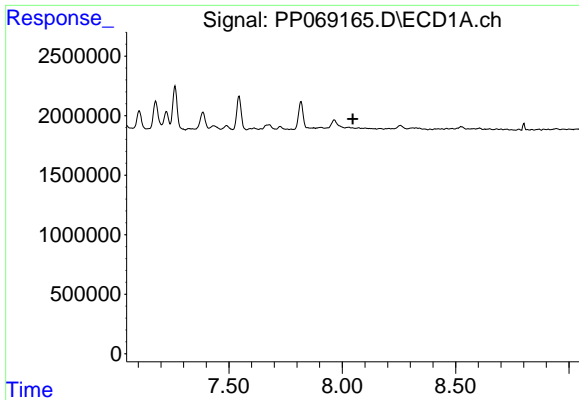
#32 AR-1260-2

R.T.: 7.680 min
 Delta R.T.: -0.007 min
 Response: 739051
 Conc: 9.76 ng/ml



#32 AR-1260-2

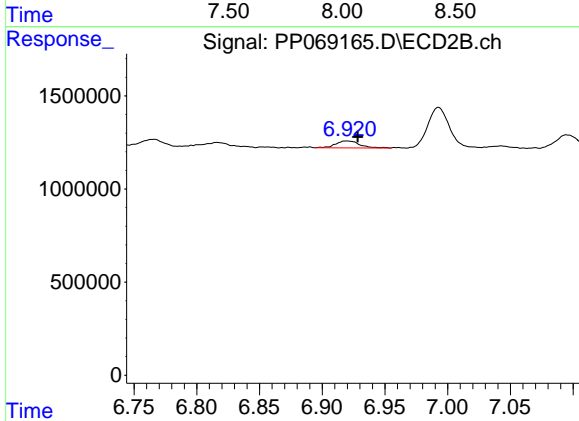
R.T.: 6.766 min
 Delta R.T.: -0.006 min
 Response: 480319
 Conc: 7.29 ng/ml



#33 AR-1260-3

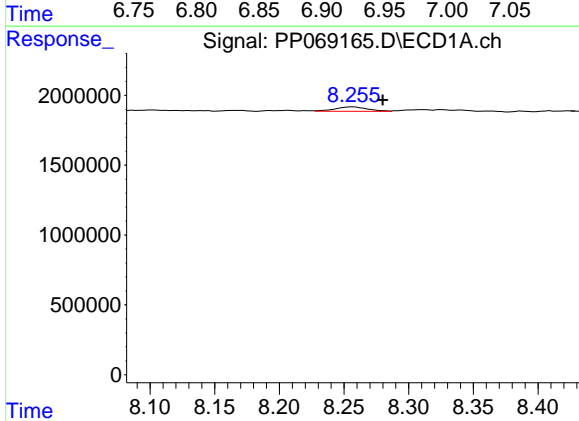
R.T.: 0.000 min
 Exp R.T.: 8.047 min
 Response: 0
 Conc: N.D.

Instrument :
 ECD_P
 ClientSampleId :



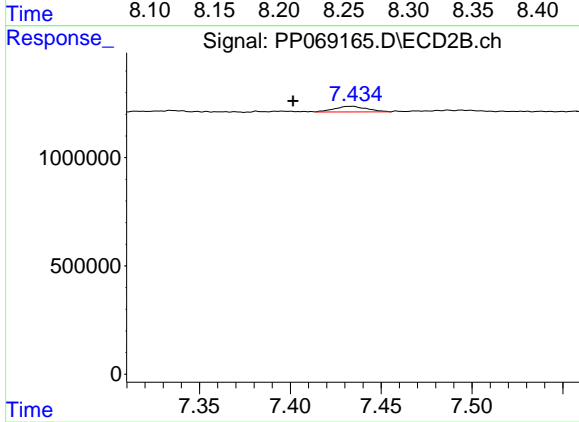
#33 AR-1260-3

R.T.: 6.920 min
 Delta R.T.: -0.009 min
 Response: 495605
 Conc: 7.70 ng/ml



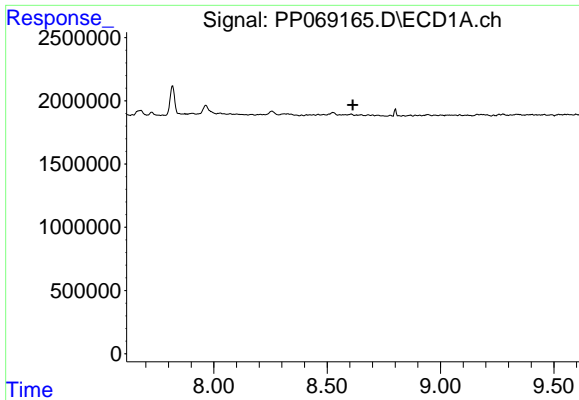
#34 AR-1260-4

R.T.: 8.257 min
 Delta R.T.: -0.023 min
 Response: 565482
 Conc: 8.54 ng/ml



#34 AR-1260-4

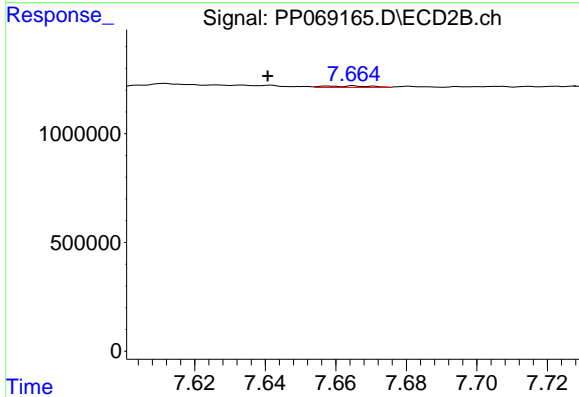
R.T.: 7.434 min
 Delta R.T.: 0.032 min
 Response: 313136
 Conc: 5.59 ng/ml



#35 AR-1260-5

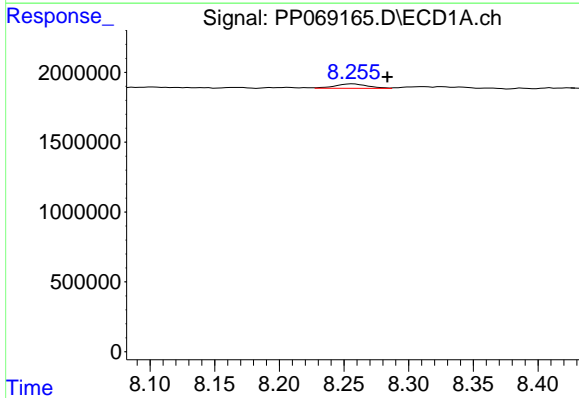
R.T.: 0.000 min
 Exp R.T.: 8.613 min
 Response: 0
 Conc: N.D.

Instrument :
 ECD_P
 ClientSampleId :



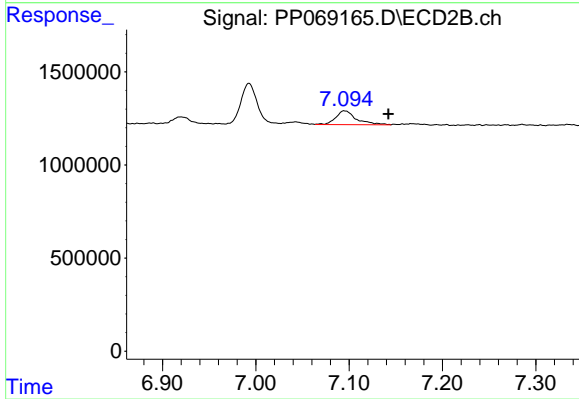
#35 AR-1260-5

R.T.: 7.665 min
 Delta R.T.: 0.024 min
 Response: 63359
 Conc: 0.52 ng/ml



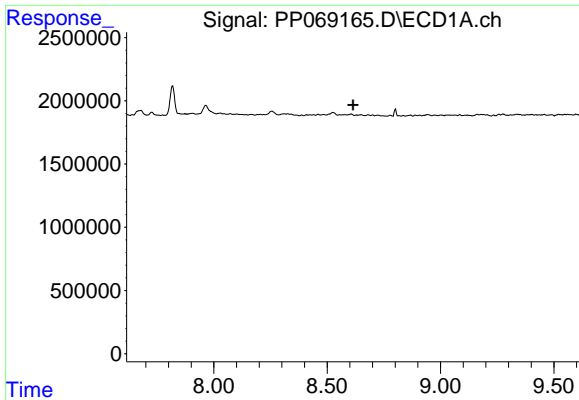
#36 AR-1262-1

R.T.: 8.257 min
 Delta R.T.: -0.027 min
 Response: 565482
 Conc: 7.15 ng/ml



#36 AR-1262-1

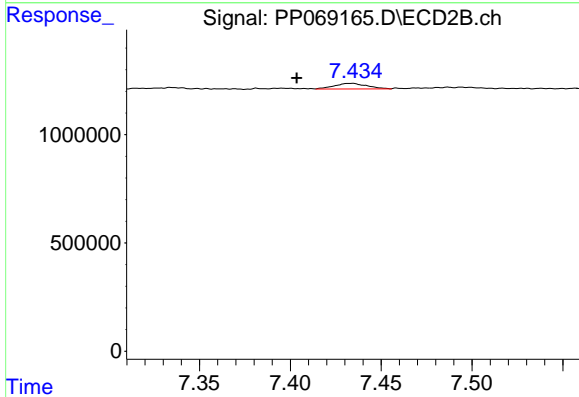
R.T.: 7.095 min
 Delta R.T.: -0.047 min
 Response: 1155679
 Conc: 14.47 ng/ml



#37 AR-1262-2

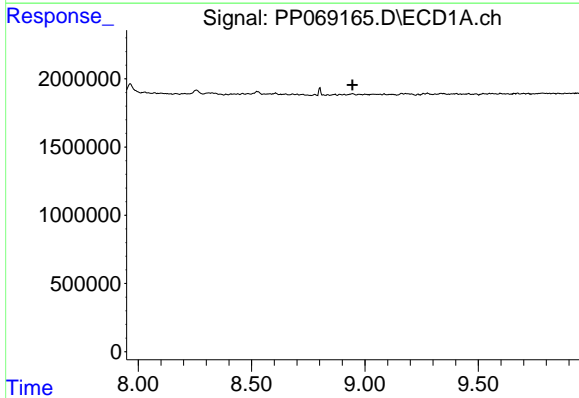
R.T.: 0.000 min
 Exp R.T. : 8.615 min
 Response: 0
 Conc: N.D.

Instrument :
 ECD_P
 ClientSampleId :



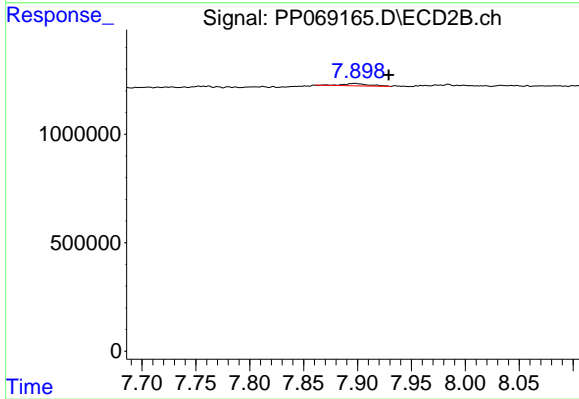
#37 AR-1262-2

R.T.: 7.434 min
 Delta R.T.: 0.030 min
 Response: 313136
 Conc: 4.48 ng/ml



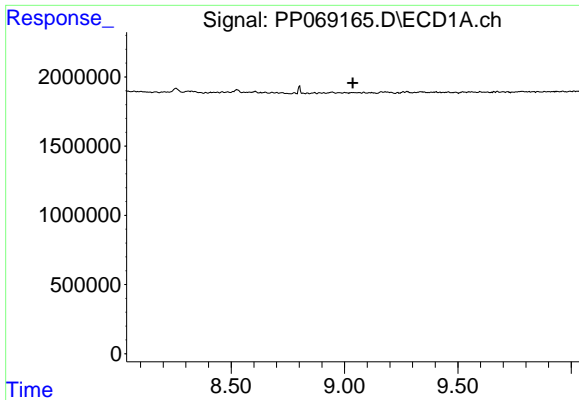
#38 AR-1262-3

R.T.: 0.000 min
 Exp R.T. : 8.945 min
 Response: 0
 Conc: N.D.



#38 AR-1262-3

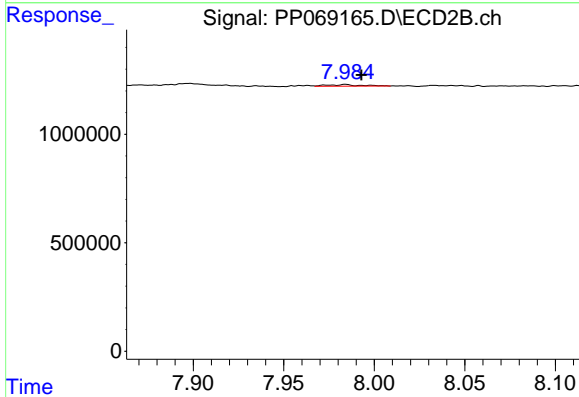
R.T.: 7.898 min
 Delta R.T.: -0.031 min
 Response: 181280
 Conc: 3.15 ng/ml



#39 AR-1262-4

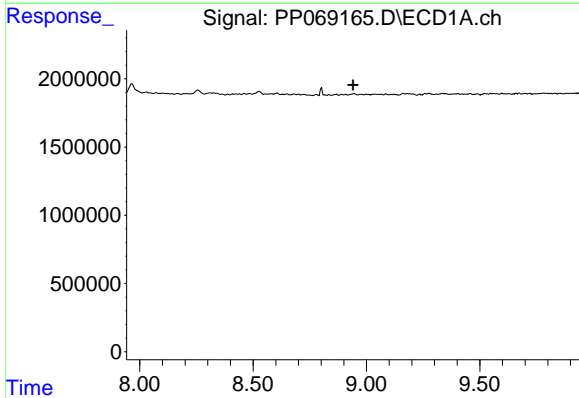
R.T.: 0.000 min
 Exp R.T. : 9.036 min
 Response: 0
 Conc: N.D.

Instrument :
 ECD_P
 ClientSampleId :



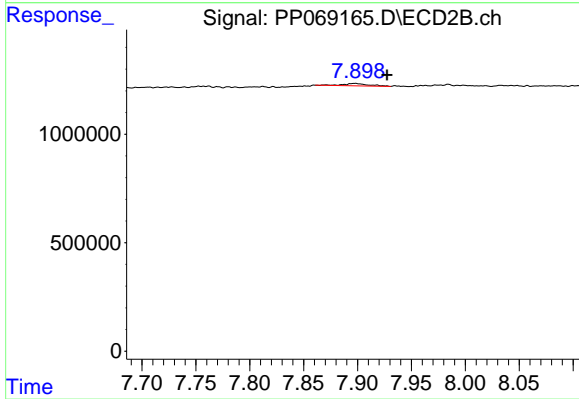
#39 AR-1262-4

R.T.: 7.984 min
 Delta R.T.: -0.009 min
 Response: 96015
 Conc: 0.95 ng/ml



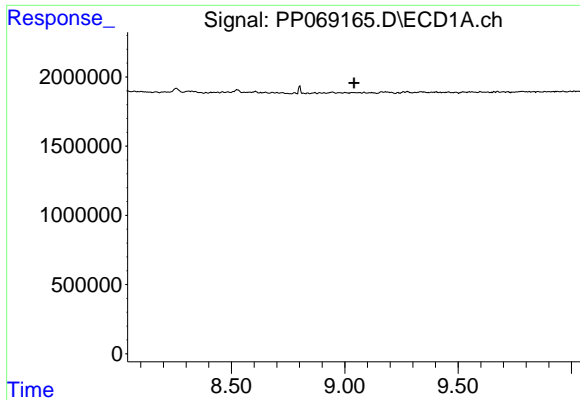
#41 AR-1268-1

R.T.: 0.000 min
 Exp R.T. : 8.941 min
 Response: 0
 Conc: N.D.



#41 AR-1268-1

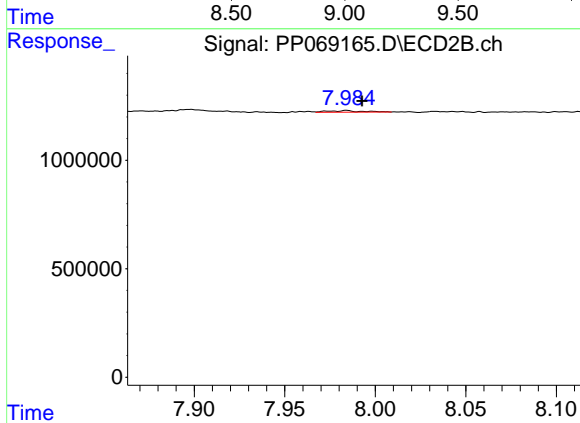
R.T.: 7.898 min
 Delta R.T.: -0.030 min
 Response: 181280
 Conc: 1.12 ng/ml



#42 AR-1268-2

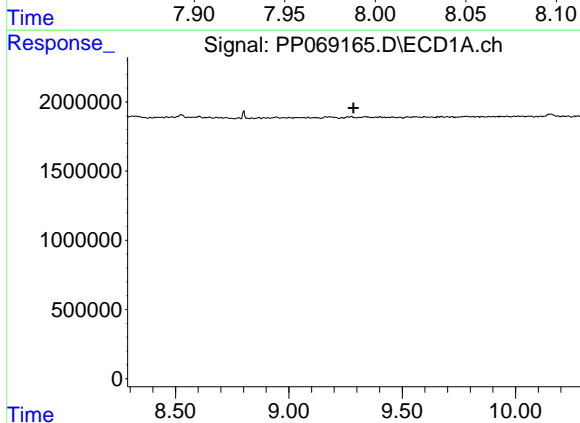
R.T.: 0.000 min
 Exp R.T.: 9.041 min
 Response: 0
 Conc: N.D.

Instrument :
 ECD_P
 ClientSampleId :



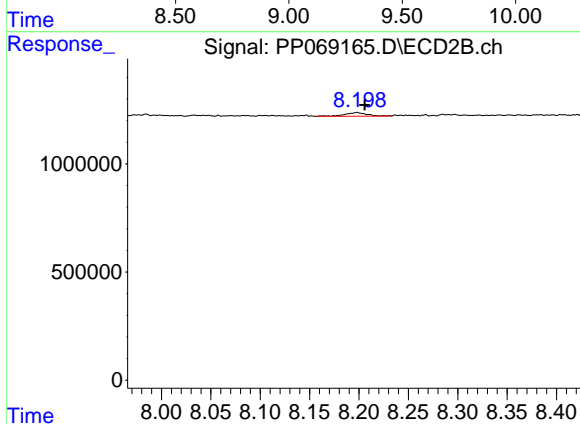
#42 AR-1268-2

R.T.: 7.984 min
 Delta R.T.: -0.008 min
 Response: 96015
 Conc: 0.65 ng/ml



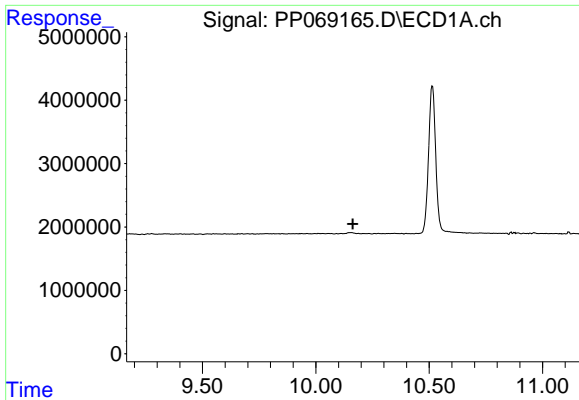
#43 AR-1268-3

R.T.: 0.000 min
 Exp R.T.: 9.285 min
 Response: 0
 Conc: N.D.



#43 AR-1268-3

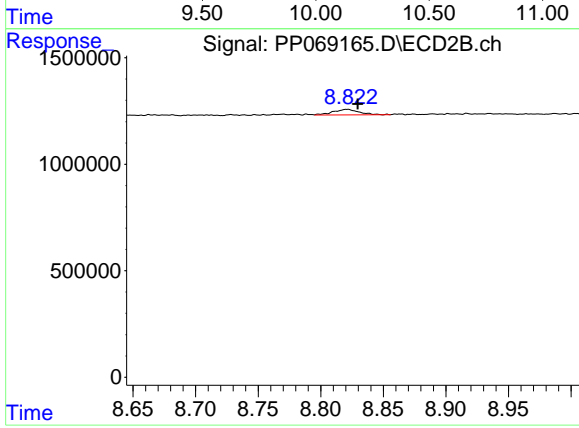
R.T.: 8.198 min
 Delta R.T.: -0.008 min
 Response: 264158
 Conc: 1.99 ng/ml



#45 AR-1268-5

R.T.: 0.000 min
 Exp R.T.: 10.164 min
 Response: 0
 Conc: N.D.

Instrument :
 ECD_P
 ClientSampleId :



#45 AR-1268-5

R.T.: 8.821 min
 Delta R.T.: -0.008 min
 Response: 379361
 Conc: 0.97 ng/ml