

Data Path : Z:\pestpcbsrv\HPCHEM1\ECD_P\Data\PP021521\
 Data File : PP033342.D
 Signal(s) : Signal #1: ECD1A.CH Signal #2: ECD2B.CH
 Acq On : 15 Feb 2021 14:33
 Operator : DD\AJ
 Sample : M1403-01MSD
 Misc :
 ALS Vial : 15 Sample Multiplier: 1

Instrument :
 ECD_P
 ClientSampleId :
 72-11939MSD

Integration File signal 1: autoint1.e
 Integration File signal 2: autoint2.e
 Quant Time: Feb 15 14:53:21 2021
 Quant Method : Z:\pestpcbsrv\HPCHEM1\ECD_P\methods\PP020821.M
 Quant Title : GC EXTRACTABLES
 QLast Update : Tue Feb 09 04:00:57 2021
 Response via : Initial Calibration
 Integrator: ChemStation 6890 Scale Mode: Small noise peaks clipped

Volume Inj. : 2 µl
 Signal #1 Phase : ZB-MR1 Signal #2 Phase: ZB-MR2
 Signal #1 Info : 30Mx0.32mmx 0.50µ Signal #2 Info : 30M x 0.32mm x 0.25µm

Compound	RT#1	RT#2	Resp#1	Resp#2	ng/ml	ng/ml
System Monitoring Compounds						
1) SA Tetrachlo...	4.725	4.000	1648084	956361	26.876	23.388
2) SA Decachlor...	10.542	9.260	1021124	713458	23.441	21.297
Target Compounds						
3) L1 AR-1016-1	6.025	5.245	1326685	702422	809.420	640.003
4) L1 AR-1016-2	6.047	5.265	1719167	1119477	686.516	685.976
5) L1 AR-1016-3	6.112	5.455	1025284	605807	646.515	679.623
6) L1 AR-1016-4	6.217	5.506	937896	423339	707.649	587.853
7) L1 AR-1016-5	6.532	5.736	682464	663922	520.355	705.504 #
8) L2 AR-1221-1	4.966	4.252	247282	79198	400.841	190.075 #
9) L2 AR-1221-2	5.068	4.352	120197	94012	258.374	297.500
10) L2 AR-1221-3	5.152	4.440	600064	392871	425.410	398.945
11) L3 AR-1232-1	5.152	4.440	600064	392871	517.483	495.744
12) L3 AR-1232-2	5.732	5.265	846856	1119477	1326.401	1514.218
13) L3 AR-1232-3	6.047	5.455	1719167	605807	1567.071	1527.411
14) L3 AR-1232-4	6.217	5.551	937896	544298	1634.059	1552.696
15) L3 AR-1232-5	6.316	5.736	601552	663922	1646.212	1746.943
16) L4 AR-1242-1	6.025	5.245	1326685	702422	1020.602	811.553
17) L4 AR-1242-2	6.047	5.265	1719167	1119477	872.539	872.297
18) L4 AR-1242-3	6.112	5.455	1025284	605807	808.950	861.858
19) L4 AR-1242-4	6.217	5.551	937896	544298	854.466	781.461
20) L4 AR-1242-5	6.996	6.117	375455	2636213	361.379	3122.103 #
21) L5 AR-1248-1	6.025	5.245	1326685	702422	1385.626	1080.089
22) L5 AR-1248-2	6.316	5.506	601552	423339	453.977	441.274
23) L5 AR-1248-3	6.532	5.551	682464	544298	421.461	535.327 #
24) L5 AR-1248-4	6.950	5.736	6094012	663922	3541.706	535.734 #
25) L5 AR-1248-5	6.996	6.157	375455	425267	215.779	376.565 #
26) L6 AR-1254-1	6.950f	6.117	6094012	2636213	3245.769	1379.386 #
27) L6 AR-1254-2	7.160	6.269	1998230	967696	681.581	590.193
28) L6 AR-1254-3	7.533	6.705	1670159	766628	549.883	285.237 #
29) L6 AR-1254-4	7.822	6.936	377237	266968	163.075	178.802
30) L6 AR-1254-5	8.252	7.353	2049573	4853684	847.007	2004.512 #
31) L7 AR-1260-1	7.699	6.823	1674838	1066091	764.996	621.547
32) L7 AR-1260-2	7.958	7.020	4628444	1373508	1583.648	679.749 #
33) L7 AR-1260-3	8.328	7.174	1327037	1319687	518.499	665.228 #
34) L7 AR-1260-4	8.556	7.654	1517260	1110777	621.050	660.273
35) L7 AR-1260-5	8.868	7.902	3098744	2170140	575.657	564.006
36) L8 AR-1262-1	8.328	7.353	1327037	4853684	349.064	3897.145 #
37) L8 AR-1262-2	8.868	7.902	3098744	2170140	494.935	493.487
38) L8 AR-1262-3	9.177	8.186	1789243	350285	436.462	185.950 #
39) L8 AR-1262-4	9.228f	8.249	163486	1535366	52.438	450.035 #
40) L8 AR-1262-5	9.861	8.746	761311	481894	369.910	312.674
41) L9 AR-1268-1	9.177	8.186	1789243	350285	237.563	67.706 #

Data Path : Z:\pestpcbsrv\HPCHEM1\ECD_P\Data\PP021521\
 Data File : PP033342.D
 Signal(s) : Signal #1: ECD1A.CH Signal #2: ECD2B.CH
 Acq On : 15 Feb 2021 14:33
 Operator : DD\AJ
 Sample : M1403-01MSD
 Misc :
 ALS Vial : 15 Sample Multiplier: 1

Instrument :
 ECD_P
 ClientSampleId :
 72-11939MSD

Integration File signal 1: autoint1.e
 Integration File signal 2: autoint2.e
 Quant Time: Feb 15 14:53:21 2021
 Quant Method : Z:\pestpcbsrv\HPCHEM1\ECD_P\methods\PP020821.M
 Quant Title : GC EXTRACTABLES
 QLast Update : Tue Feb 09 04:00:57 2021
 Response via : Initial Calibration
 Integrator: ChemStation 6890 Scale Mode: Small noise peaks clipped

Volume Inj. : 2 µl
 Signal #1 Phase : ZB-MR1 Signal #2 Phase: ZB-MR2
 Signal #1 Info : 30Mx0.32mmx 0.50µ Signal #2 Info : 30M x 0.32mm x 0.25µm

	Compound	RT#1	RT#2	Resp#1	Resp#2	ng/ml	ng/ml
42)	L9 AR-1268-2	9.228f	8.249	163486	1535366	25.324	312.158 #
43)	L9 AR-1268-3	9.459	8.451	68526	52086	11.165	11.915
44)	L9 AR-1268-4	9.861	8.746	761311	481894	350.722	290.019
45)	L9 AR-1268-5	10.241	9.023	244767	198370	14.952	15.516

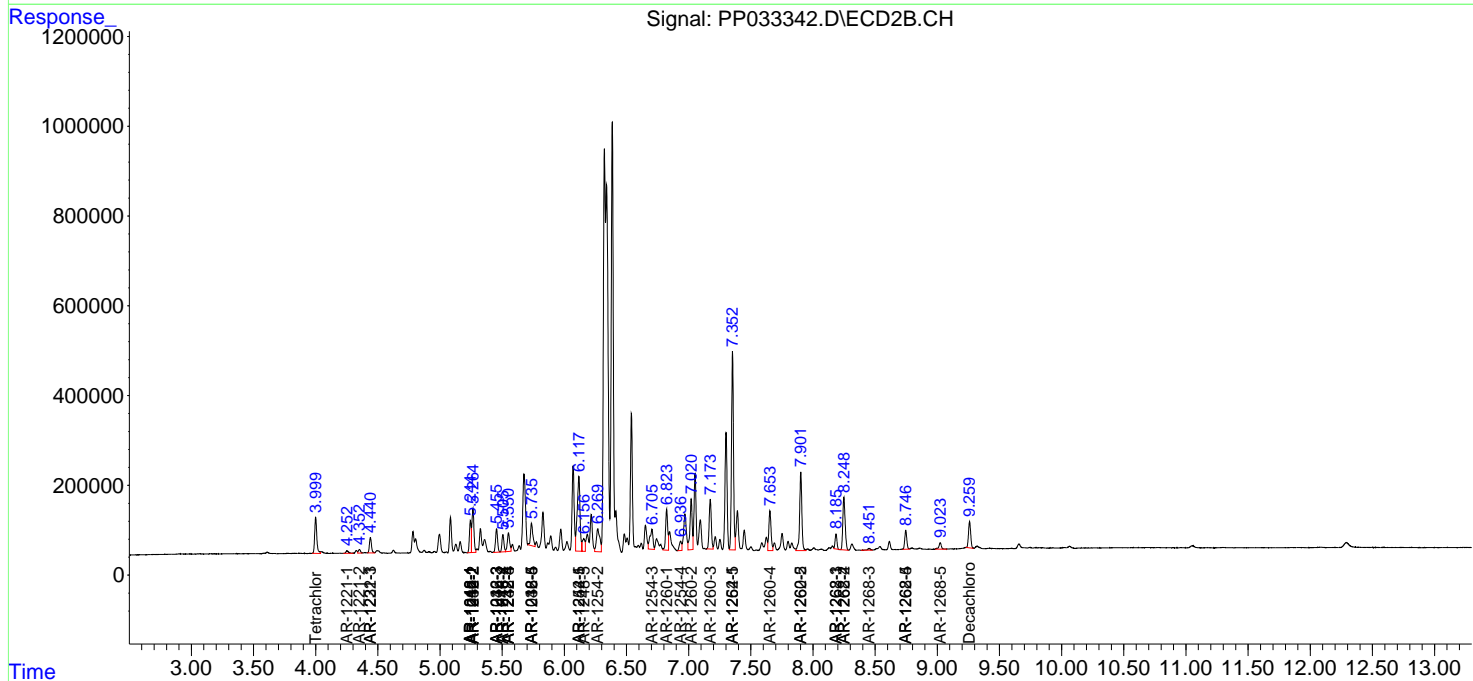
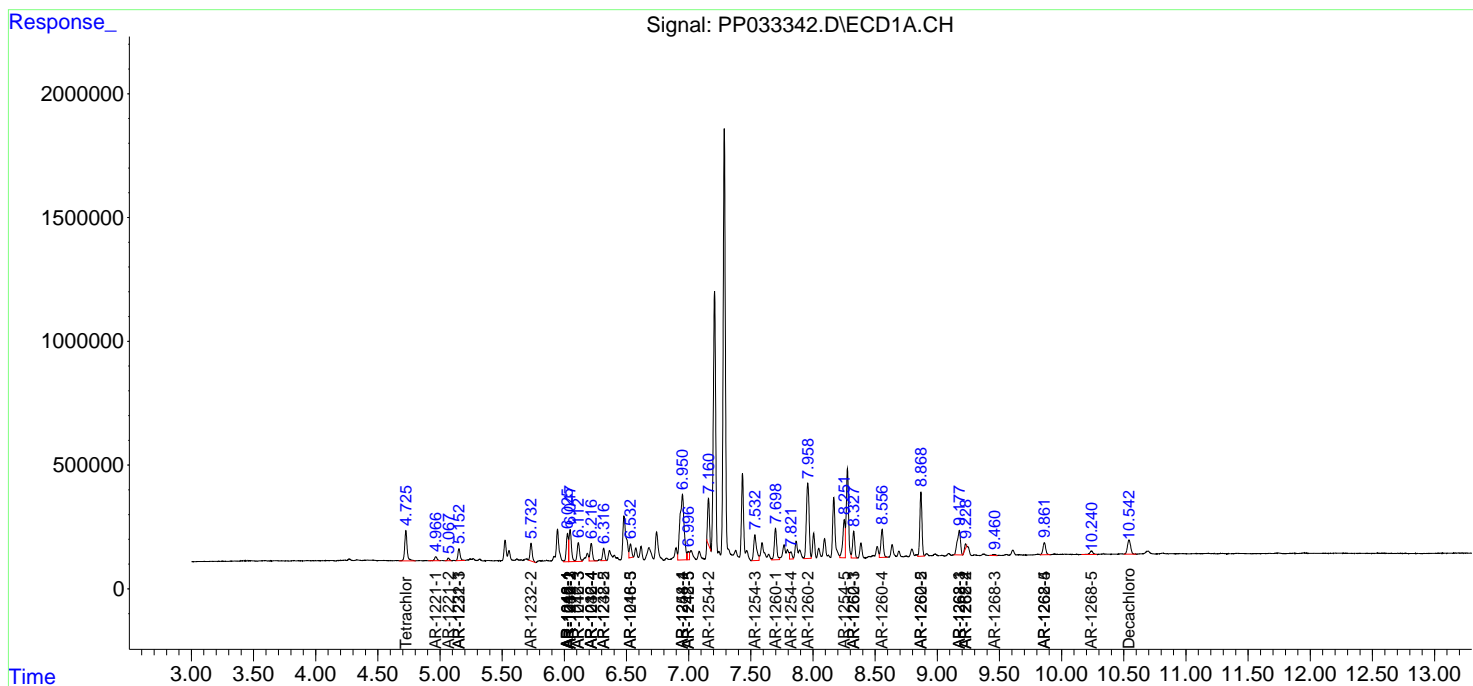
(f)=RT Delta > 1/2 Window (#)=Amounts differ by > 25% (m)=manual int.

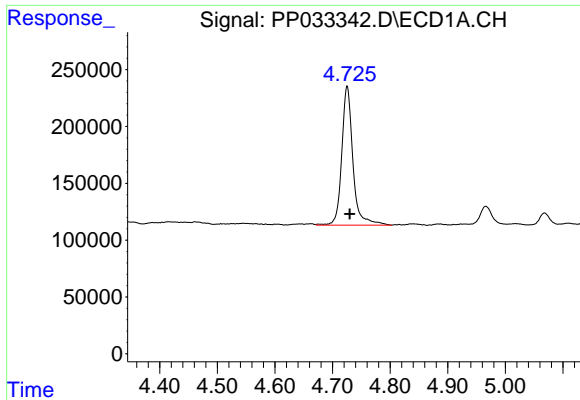
Data Path : Z:\pestpcbsrv\HPCHEM1\ECD_P\Data\PP021521\
 Data File : PP033342.D
 Signal(s) : Signal #1: ECD1A.CH Signal #2: ECD2B.CH
 Acq On : 15 Feb 2021 14:33
 Operator : DD\AJ
 Sample : M1403-01MSD
 Misc :
 ALS Vial : 15 Sample Multiplier: 1

Instrument :
 ECD_P
 ClientSampled :
 72-11939MSD

Integration File signal 1: autoint1.e
 Integration File signal 2: autoint2.e
 Quant Time: Feb 15 14:53:21 2021
 Quant Method : Z:\pestpcbsrv\HPCHEM1\ECD_P\methods\PP020821.M
 Quant Title : GC EXTRACTABLES
 QLast Update : Tue Feb 09 04:00:57 2021
 Response via : Initial Calibration
 Integrator: ChemStation 6890 Scale Mode: Small noise peaks clipped

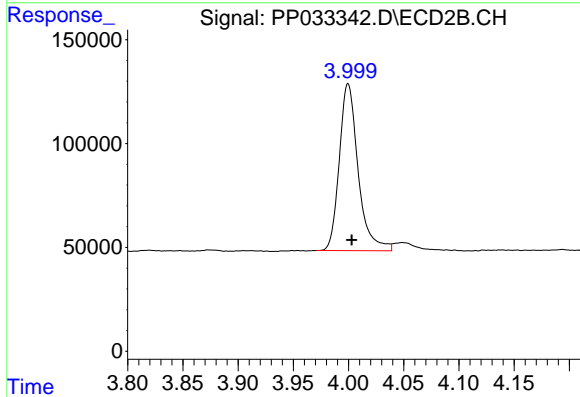
Volume Inj. : 2 µl
 Signal #1 Phase : ZB-MR1 Signal #2 Phase: ZB-MR2
 Signal #1 Info : 30Mx0.32mmx 0.50µ Signal #2 Info : 30M x 0.32mm x 0.25µm



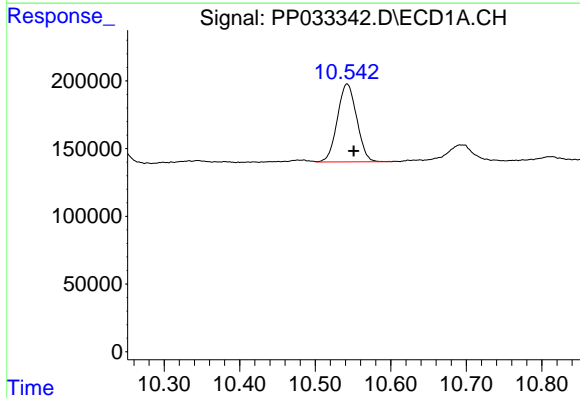


#1 Tetrachloro-m-xylene
 R.T.: 4.725 min
 Delta R.T.: -0.005 min
 Response: 1648084
 Conc: 26.88 ng/ml

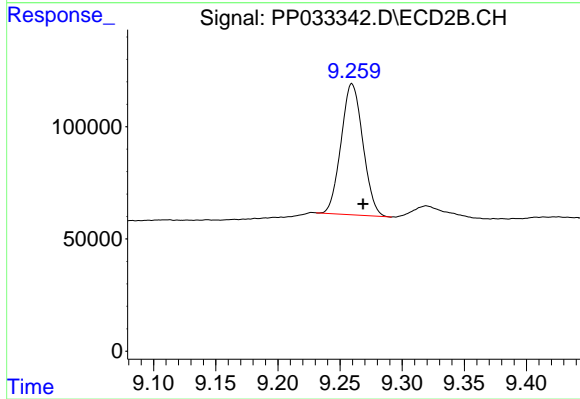
Instrument :
 ECD_P
 ClientSampleId :
 72-11939MSD



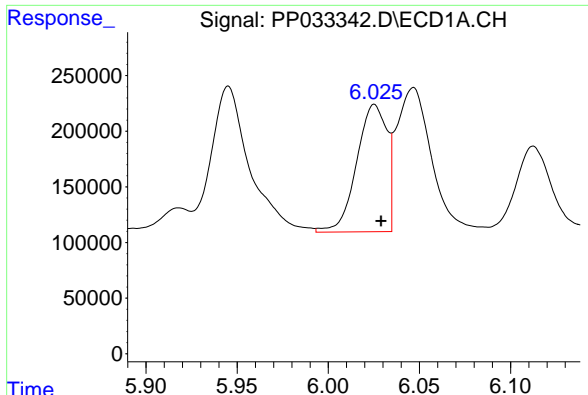
#1 Tetrachloro-m-xylene
 R.T.: 4.000 min
 Delta R.T.: -0.003 min
 Response: 956361
 Conc: 23.39 ng/ml



#2 Decachlorobiphenyl
 R.T.: 10.542 min
 Delta R.T.: -0.009 min
 Response: 1021124
 Conc: 23.44 ng/ml



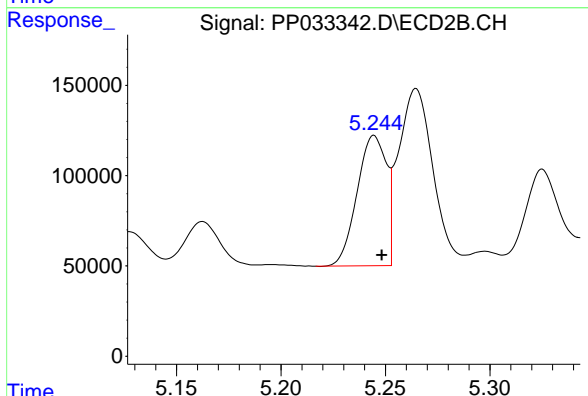
#2 Decachlorobiphenyl
 R.T.: 9.260 min
 Delta R.T.: -0.009 min
 Response: 713458
 Conc: 21.30 ng/ml



#3 AR-1016-1

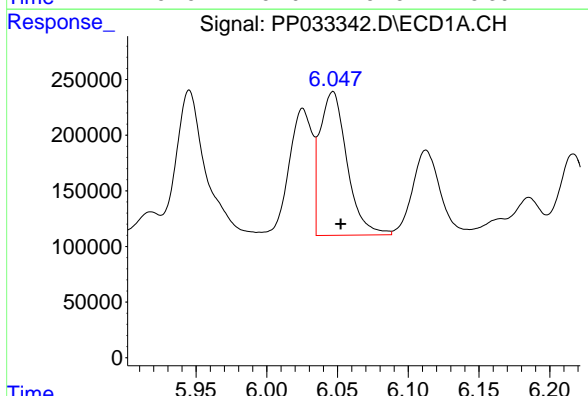
R.T.: 6.025 min
Delta R.T.: -0.004 min
Response: 1326685
Conc: 809.42 ng/ml

Instrument :
ECD_P
ClientSampleId :
72-11939MSD



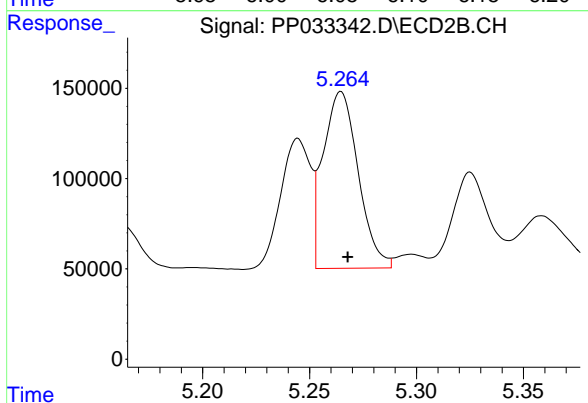
#3 AR-1016-1

R.T.: 5.245 min
Delta R.T.: -0.004 min
Response: 702422
Conc: 640.00 ng/ml



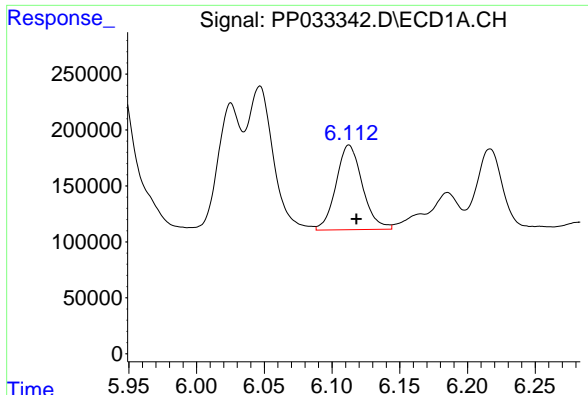
#4 AR-1016-2

R.T.: 6.047 min
Delta R.T.: -0.006 min
Response: 1719167
Conc: 686.52 ng/ml



#4 AR-1016-2

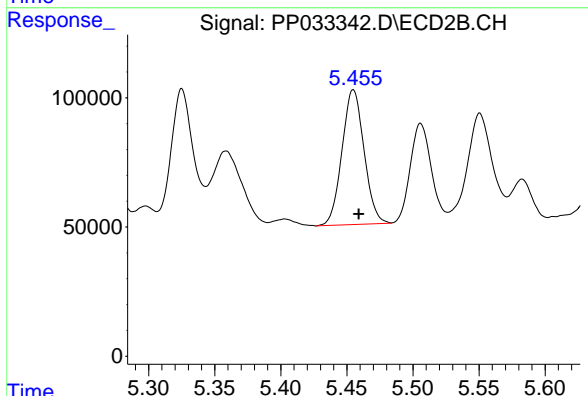
R.T.: 5.265 min
Delta R.T.: -0.003 min
Response: 1119477
Conc: 685.98 ng/ml



#5 AR-1016-3

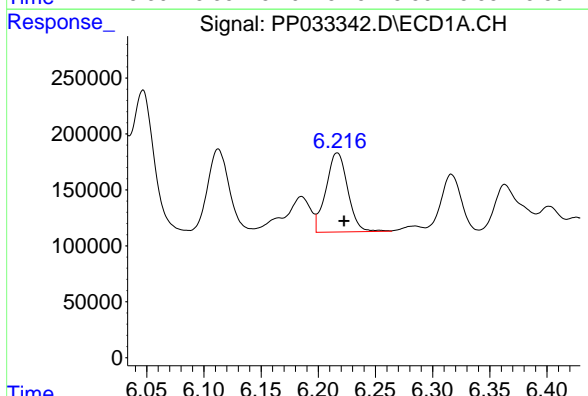
R.T.: 6.112 min
 Delta R.T.: -0.005 min
 Response: 1025284
 Conc: 646.51 ng/ml

Instrument :
 ECD_P
 ClientSampleId :
 72-11939MSD



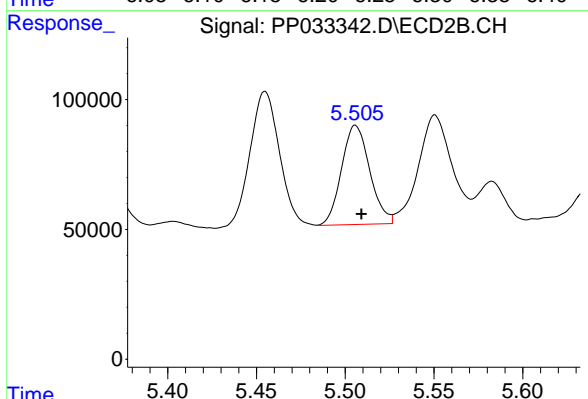
#5 AR-1016-3

R.T.: 5.455 min
 Delta R.T.: -0.004 min
 Response: 605807
 Conc: 679.62 ng/ml



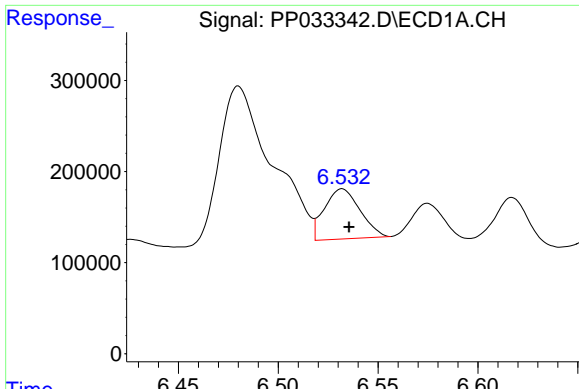
#6 AR-1016-4

R.T.: 6.217 min
 Delta R.T.: -0.006 min
 Response: 937896
 Conc: 707.65 ng/ml



#6 AR-1016-4

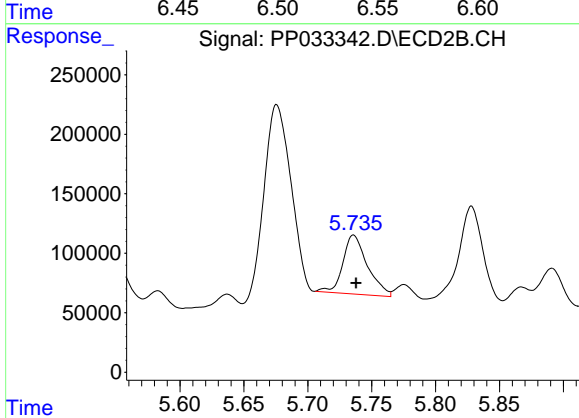
R.T.: 5.506 min
 Delta R.T.: -0.003 min
 Response: 423339
 Conc: 587.85 ng/ml



#7 AR-1016-5

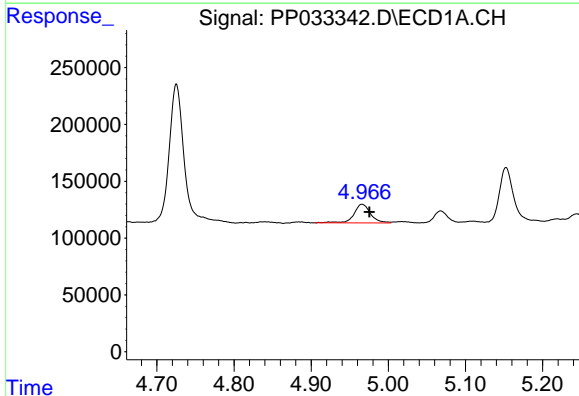
R.T.: 6.532 min
 Delta R.T.: -0.003 min
 Response: 682464
 Conc: 520.35 ng/ml

Instrument :
 ECD_P
ClientSampleId :
 72-11939MSD



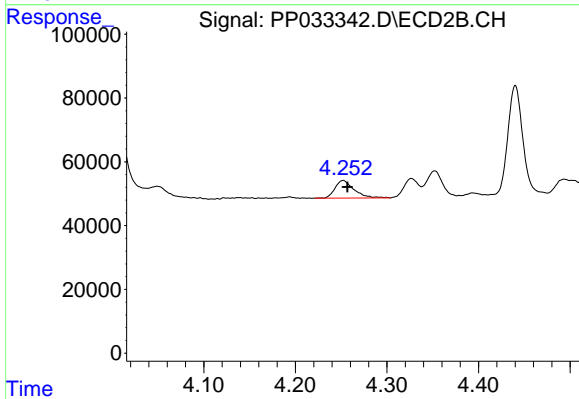
#7 AR-1016-5

R.T.: 5.736 min
 Delta R.T.: -0.002 min
 Response: 663922
 Conc: 705.50 ng/ml



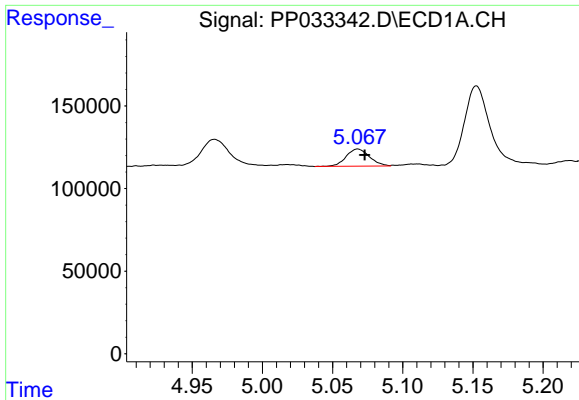
#8 AR-1221-1

R.T.: 4.966 min
 Delta R.T.: -0.009 min
 Response: 247282
 Conc: 400.84 ng/ml



#8 AR-1221-1

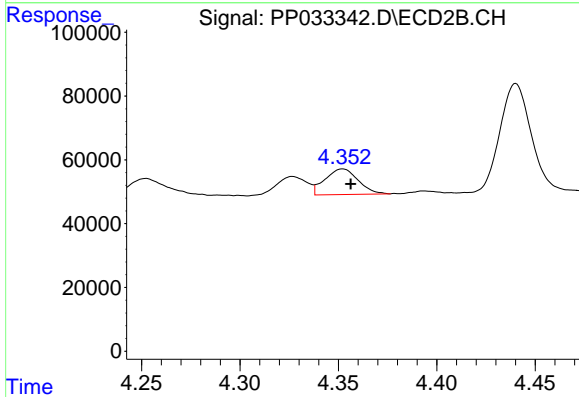
R.T.: 4.252 min
 Delta R.T.: -0.005 min
 Response: 79198
 Conc: 190.07 ng/ml



#9 AR-1221-2

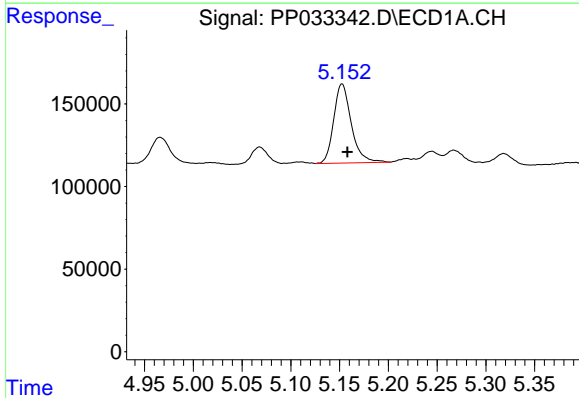
R.T.: 5.068 min
 Delta R.T.: -0.005 min
 Response: 120197
 Conc: 258.37 ng/ml

Instrument :
 ECD_P
ClientSampled :
 72-11939MSD



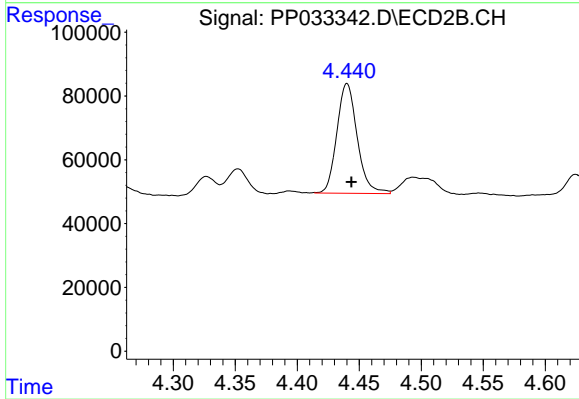
#9 AR-1221-2

R.T.: 4.352 min
 Delta R.T.: -0.004 min
 Response: 94012
 Conc: 297.50 ng/ml



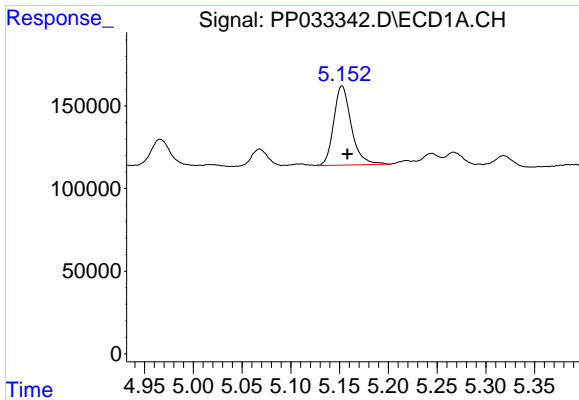
#10 AR-1221-3

R.T.: 5.152 min
 Delta R.T.: -0.005 min
 Response: 600064
 Conc: 425.41 ng/ml



#10 AR-1221-3

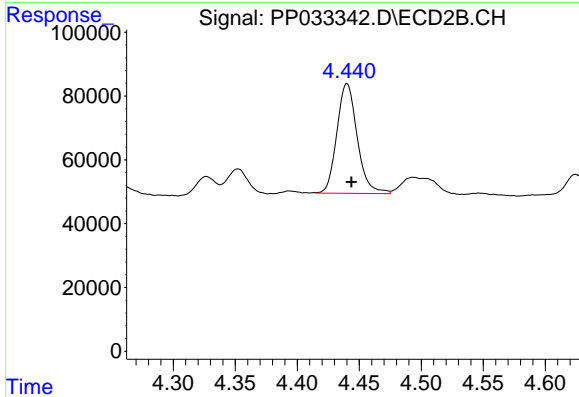
R.T.: 4.440 min
 Delta R.T.: -0.004 min
 Response: 392871
 Conc: 398.94 ng/ml



#11 AR-1232-1

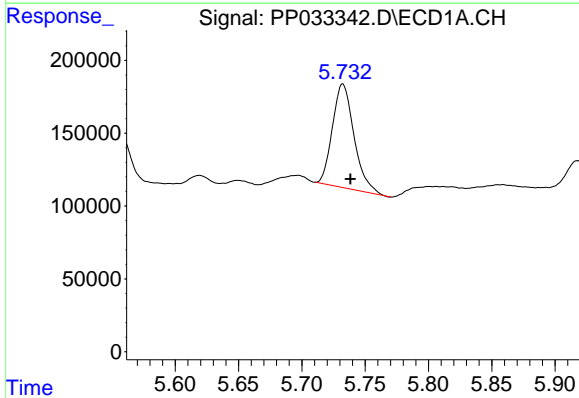
R.T.: 5.152 min
 Delta R.T.: -0.006 min
 Response: 600064
 Conc: 517.48 ng/ml

Instrument :
 ECD_P
 ClientSampleId :
 72-11939MSD



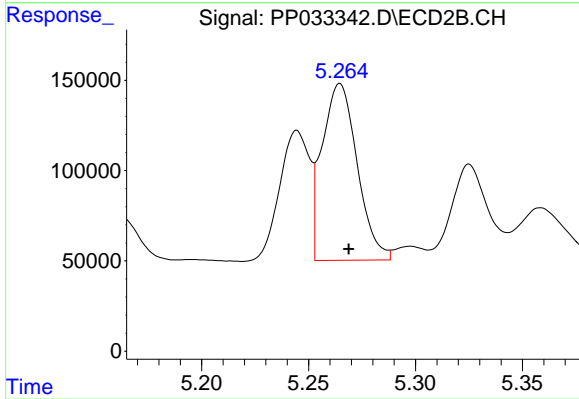
#11 AR-1232-1

R.T.: 4.440 min
 Delta R.T.: -0.004 min
 Response: 392871
 Conc: 495.74 ng/ml



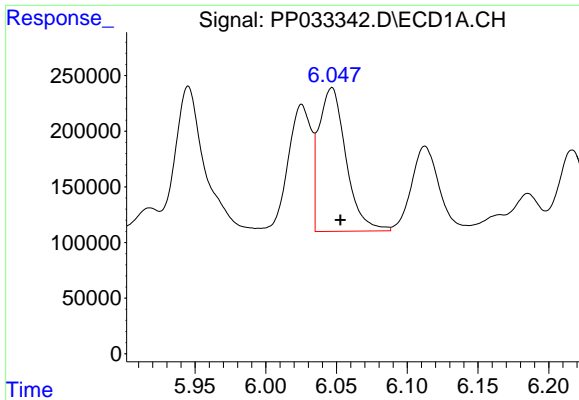
#12 AR-1232-2

R.T.: 5.732 min
 Delta R.T.: -0.006 min
 Response: 846856
 Conc: 1326.40 ng/ml



#12 AR-1232-2

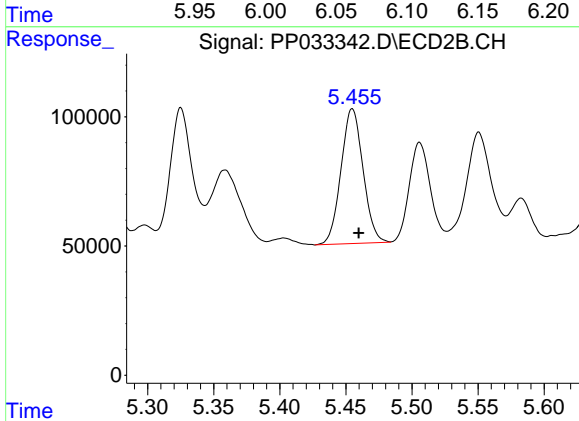
R.T.: 5.265 min
 Delta R.T.: -0.004 min
 Response: 1119477
 Conc: 1514.22 ng/ml



#13 AR-1232-3

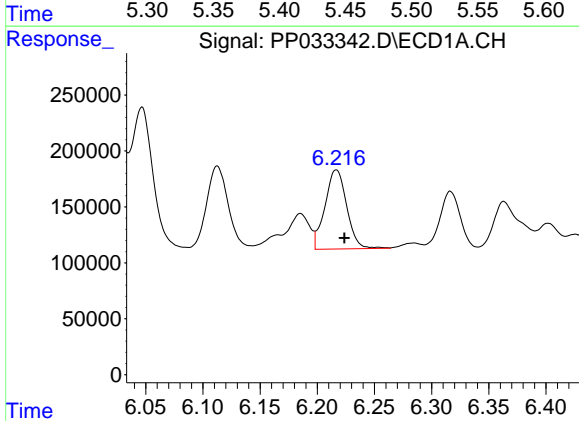
R.T.: 6.047 min
 Delta R.T.: -0.006 min
 Response: 1719167
 Conc: 1567.07 ng/ml

Instrument :
 ECD_P
 ClientSampleId :
 72-11939MSD



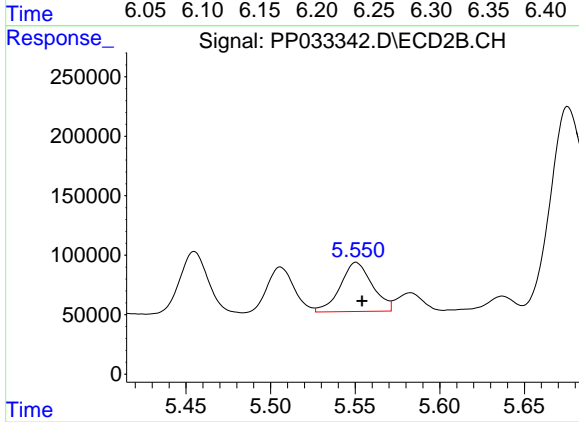
#13 AR-1232-3

R.T.: 5.455 min
 Delta R.T.: -0.005 min
 Response: 605807
 Conc: 1527.41 ng/ml



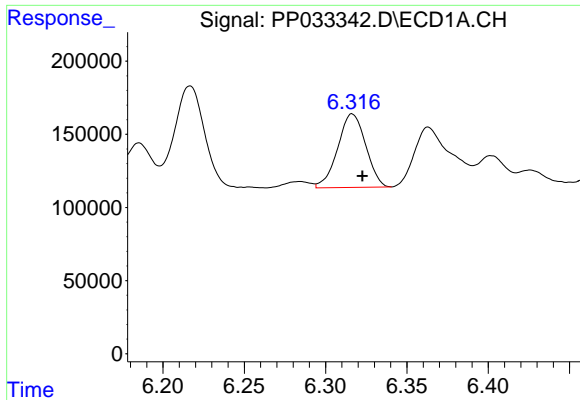
#14 AR-1232-4

R.T.: 6.217 min
 Delta R.T.: -0.007 min
 Response: 937896
 Conc: 1634.06 ng/ml



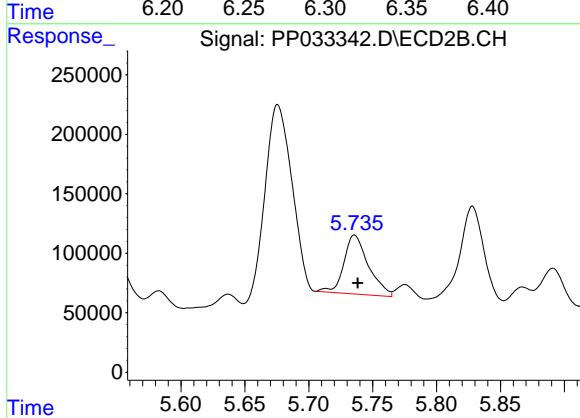
#14 AR-1232-4

R.T.: 5.551 min
 Delta R.T.: -0.004 min
 Response: 544298
 Conc: 1552.70 ng/ml

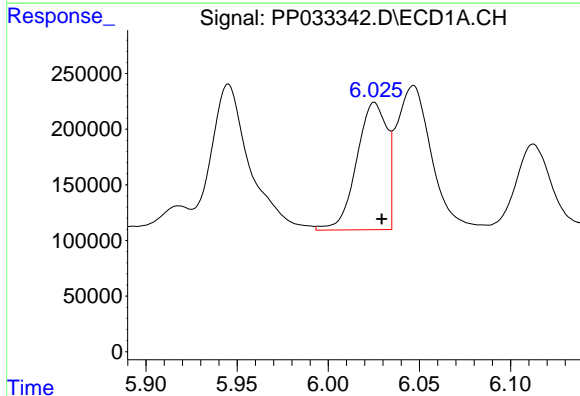


#15 AR-1232-5
 R.T.: 6.316 min
 Delta R.T.: -0.006 min
 Response: 601552
 Conc: 1646.21 ng/ml

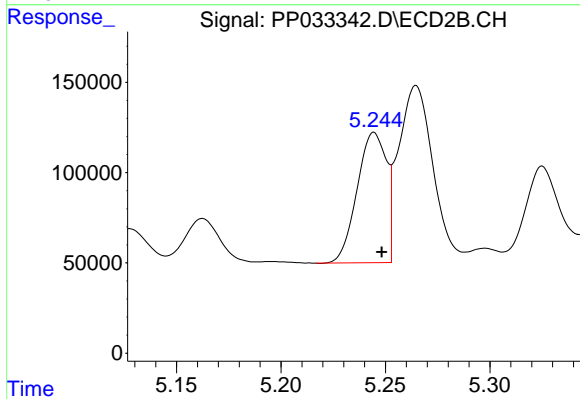
Instrument :
 ECD_P
 ClientSampleId :
 72-11939MSD



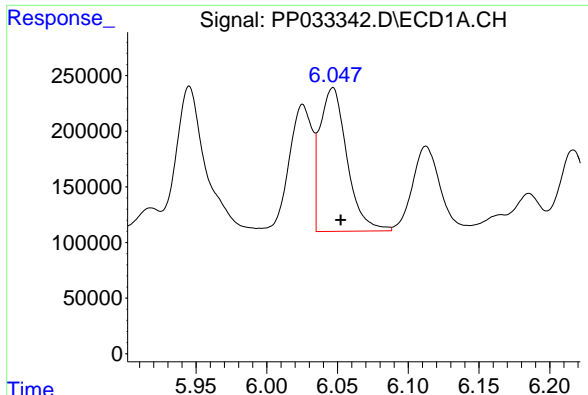
#15 AR-1232-5
 R.T.: 5.736 min
 Delta R.T.: -0.003 min
 Response: 663922
 Conc: 1746.94 ng/ml



#16 AR-1242-1
 R.T.: 6.025 min
 Delta R.T.: -0.004 min
 Response: 1326685
 Conc: 1020.60 ng/ml



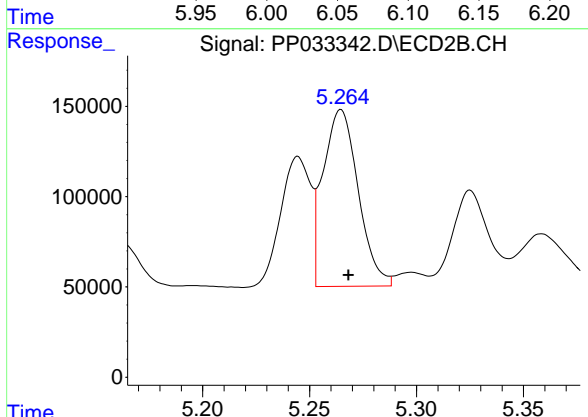
#16 AR-1242-1
 R.T.: 5.245 min
 Delta R.T.: -0.004 min
 Response: 702422
 Conc: 811.55 ng/ml



#17 AR-1242-2

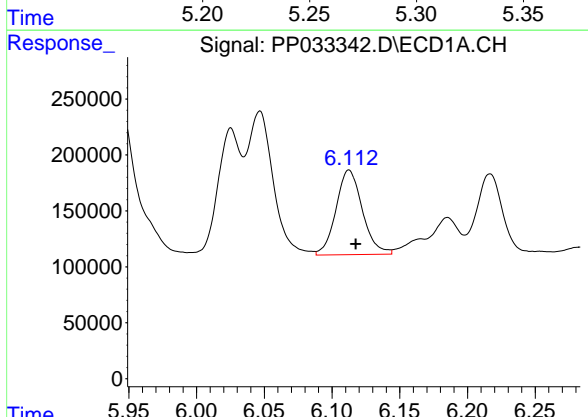
R.T.: 6.047 min
 Delta R.T.: -0.005 min
 Response: 1719167
 Conc: 872.54 ng/ml

Instrument :
 ECD_P
 ClientSampleId :
 72-11939MSD



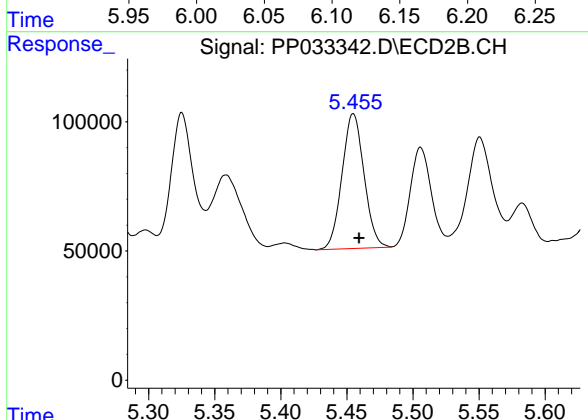
#17 AR-1242-2

R.T.: 5.265 min
 Delta R.T.: -0.003 min
 Response: 1119477
 Conc: 872.30 ng/ml



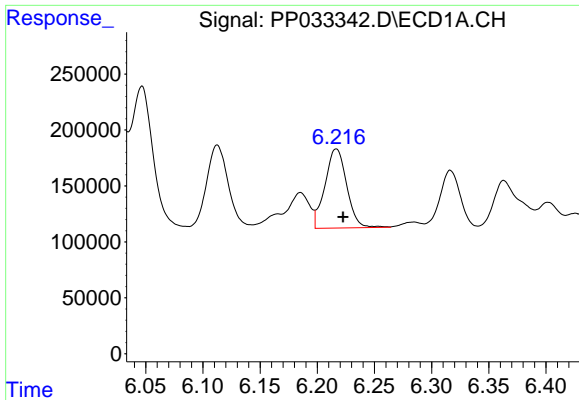
#18 AR-1242-3

R.T.: 6.112 min
 Delta R.T.: -0.005 min
 Response: 1025284
 Conc: 808.95 ng/ml



#18 AR-1242-3

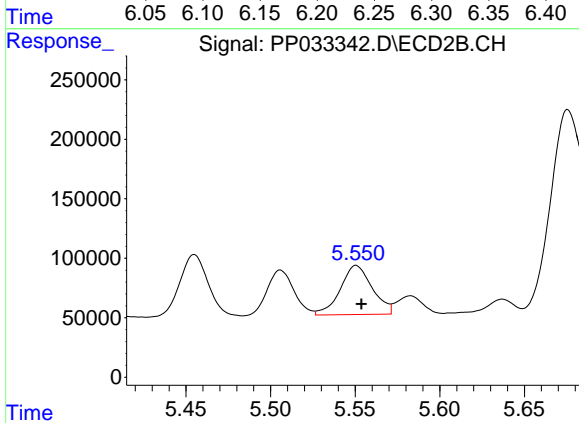
R.T.: 5.455 min
 Delta R.T.: -0.004 min
 Response: 605807
 Conc: 861.86 ng/ml



#19 AR-1242-4

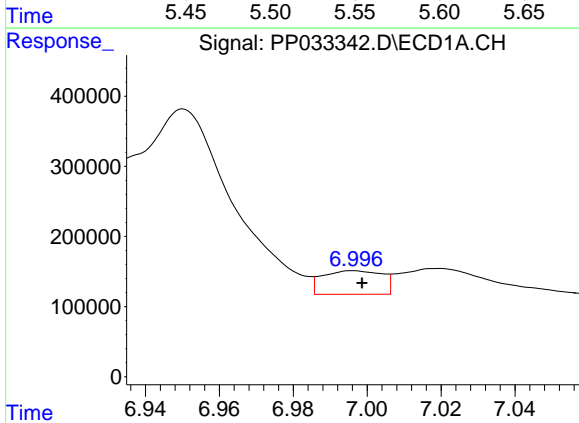
R.T.: 6.217 min
 Delta R.T.: -0.006 min
 Response: 937896
 Conc: 854.47 ng/ml

Instrument :
 ECD_P
 ClientSampleId :
 72-11939MSD



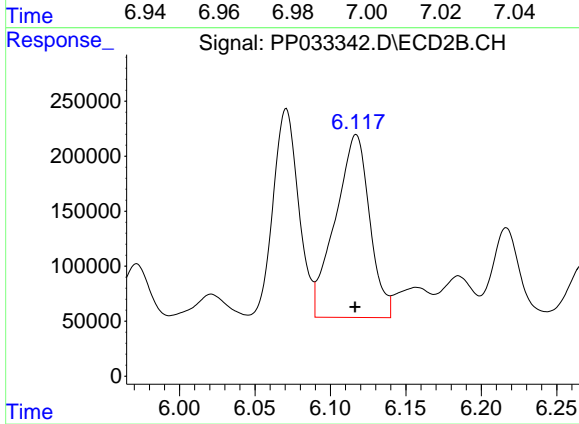
#19 AR-1242-4

R.T.: 5.551 min
 Delta R.T.: -0.003 min
 Response: 544298
 Conc: 781.46 ng/ml



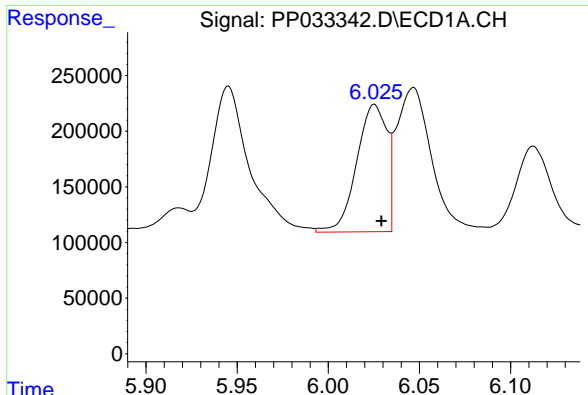
#20 AR-1242-5

R.T.: 6.996 min
 Delta R.T.: -0.002 min
 Response: 375455
 Conc: 361.38 ng/ml



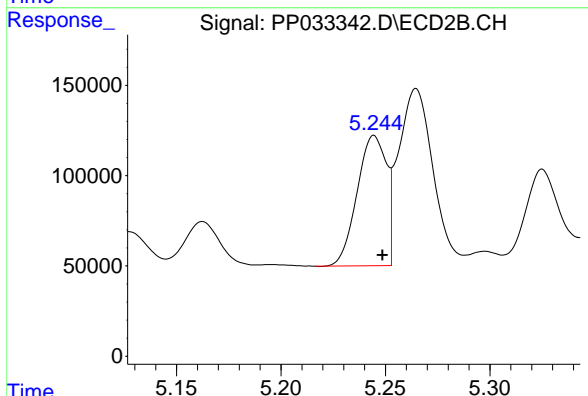
#20 AR-1242-5

R.T.: 6.117 min
 Delta R.T.: 0.000 min
 Response: 2636213
 Conc: 3122.10 ng/ml

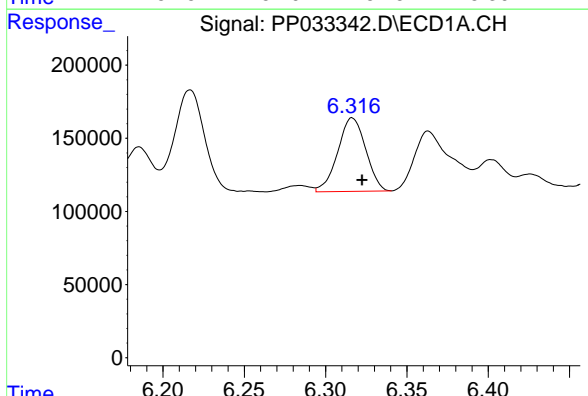


#21 AR-1248-1
 R.T.: 6.025 min
 Delta R.T.: -0.004 min
 Response: 1326685
 Conc: 1385.63 ng/ml

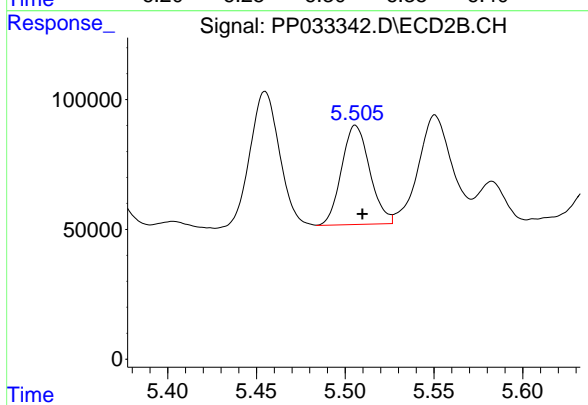
Instrument :
 ECD_P
 ClientSampleId :
 72-11939MSD



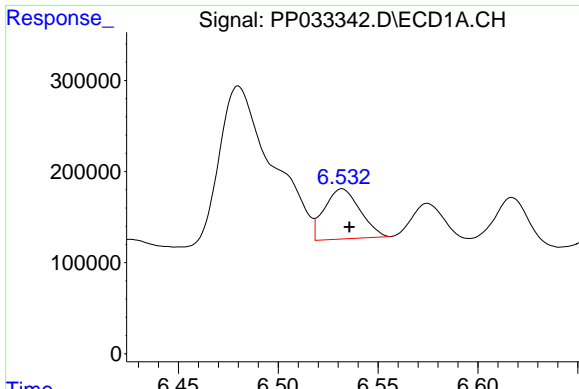
#21 AR-1248-1
 R.T.: 5.245 min
 Delta R.T.: -0.004 min
 Response: 702422
 Conc: 1080.09 ng/ml



#22 AR-1248-2
 R.T.: 6.316 min
 Delta R.T.: -0.006 min
 Response: 601552
 Conc: 453.98 ng/ml

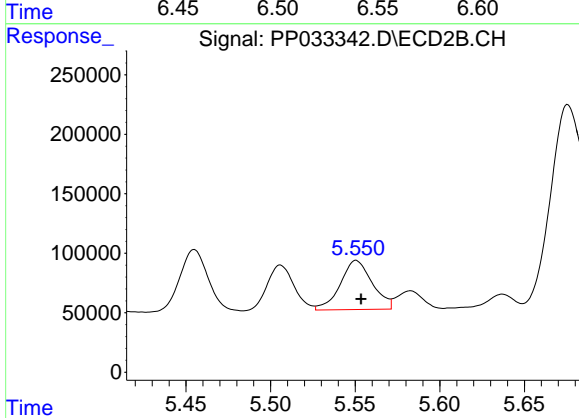


#22 AR-1248-2
 R.T.: 5.506 min
 Delta R.T.: -0.004 min
 Response: 423339
 Conc: 441.27 ng/ml

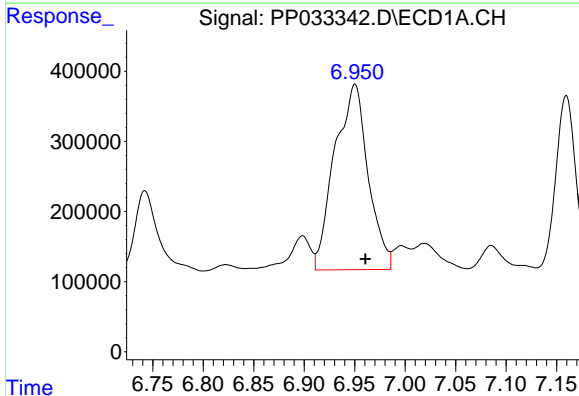


#23 AR-1248-3
 R.T.: 6.532 min
 Delta R.T.: -0.004 min
 Response: 682464
 Conc: 421.46 ng/ml

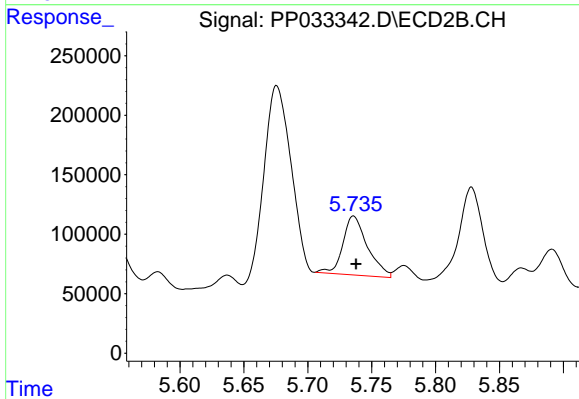
Instrument :
 ECD_P
 ClientSampleId :
 72-11939MSD



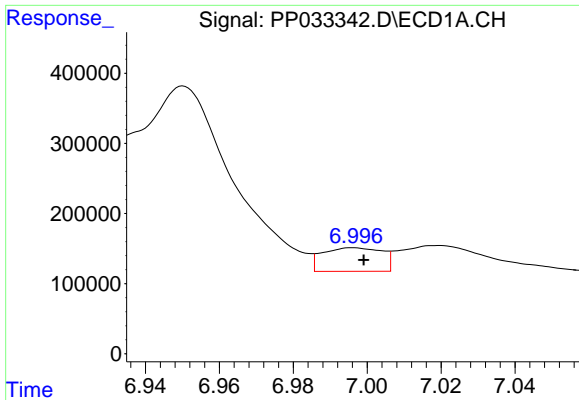
#23 AR-1248-3
 R.T.: 5.551 min
 Delta R.T.: -0.003 min
 Response: 544298
 Conc: 535.33 ng/ml



#24 AR-1248-4
 R.T.: 6.950 min
 Delta R.T.: -0.010 min
 Response: 6094012
 Conc: 3541.71 ng/ml

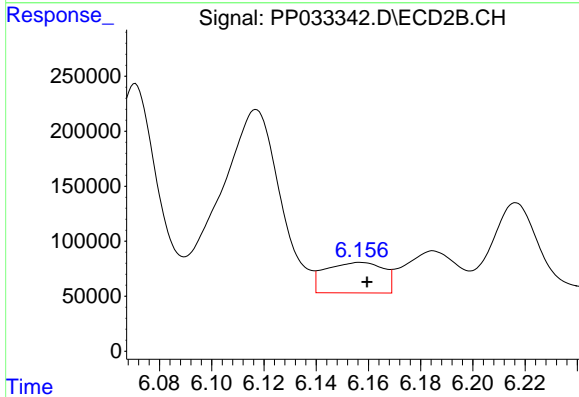


#24 AR-1248-4
 R.T.: 5.736 min
 Delta R.T.: -0.002 min
 Response: 663922
 Conc: 535.73 ng/ml

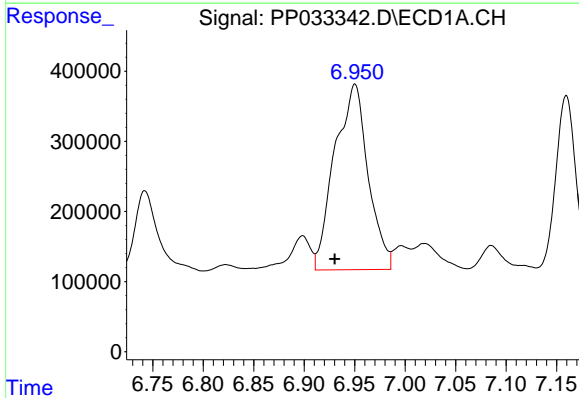


#25 AR-1248-5
 R.T.: 6.996 min
 Delta R.T.: -0.003 min
 Response: 375455
 Conc: 215.78 ng/ml

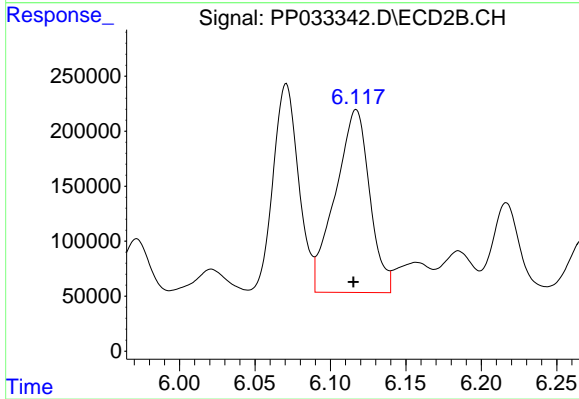
Instrument :
 ECD_P
ClientSampled :
 72-11939MSD



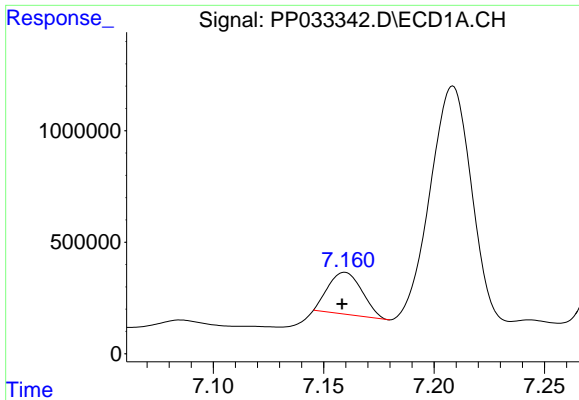
#25 AR-1248-5
 R.T.: 6.157 min
 Delta R.T.: -0.003 min
 Response: 425267
 Conc: 376.57 ng/ml



#26 AR-1254-1
 R.T.: 6.950 min
 Delta R.T.: 0.020 min
 Response: 6094012
 Conc: 3245.77 ng/ml



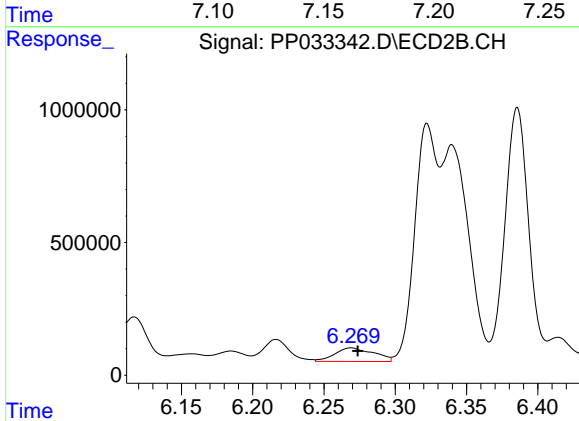
#26 AR-1254-1
 R.T.: 6.117 min
 Delta R.T.: 0.002 min
 Response: 2636213
 Conc: 1379.39 ng/ml



#27 AR-1254-2

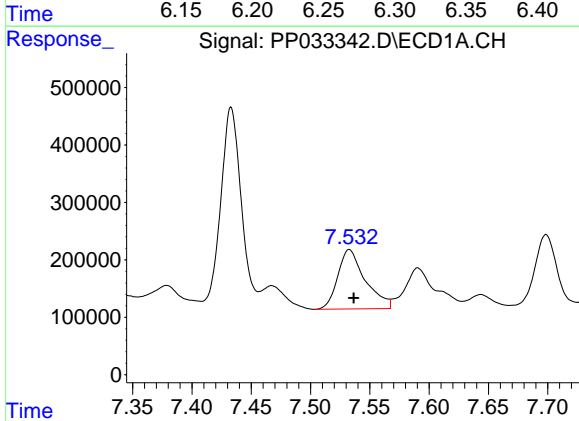
R.T.: 7.160 min
 Delta R.T.: 0.001 min
 Response: 1998230
 Conc: 681.58 ng/ml

Instrument :
 ECD_P
 ClientSampleId :
 72-11939MSD



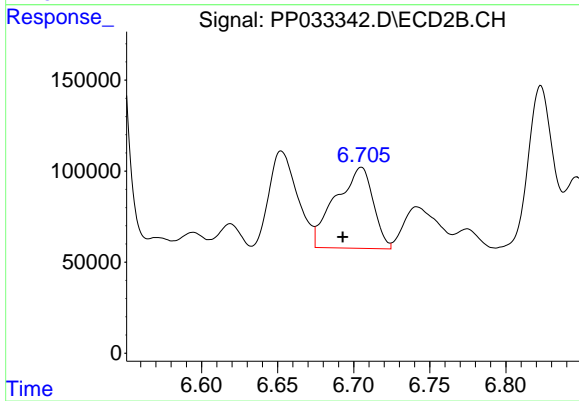
#27 AR-1254-2

R.T.: 6.269 min
 Delta R.T.: -0.005 min
 Response: 967696
 Conc: 590.19 ng/ml



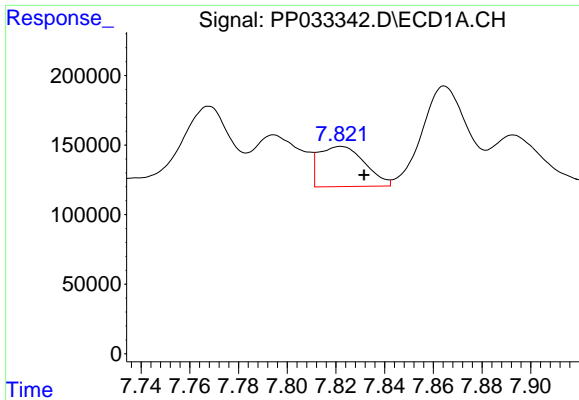
#28 AR-1254-3

R.T.: 7.533 min
 Delta R.T.: -0.004 min
 Response: 1670159
 Conc: 549.88 ng/ml



#28 AR-1254-3

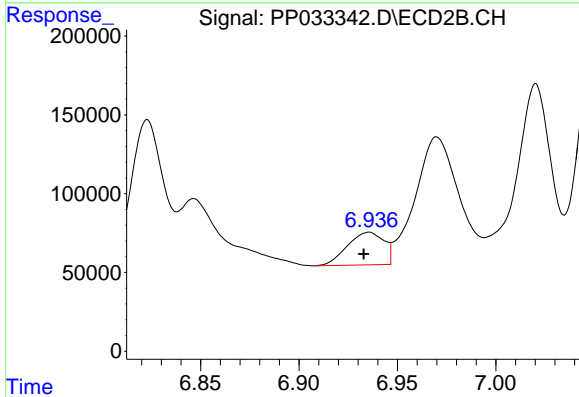
R.T.: 6.705 min
 Delta R.T.: 0.012 min
 Response: 766628
 Conc: 285.24 ng/ml



#29 AR-1254-4

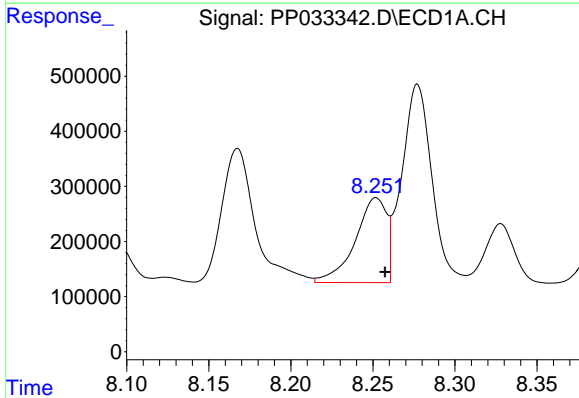
R.T.: 7.822 min
 Delta R.T.: -0.009 min
 Response: 377237
 Conc: 163.08 ng/ml

Instrument :
 ECD_P
ClientSampled :
 72-11939MSD



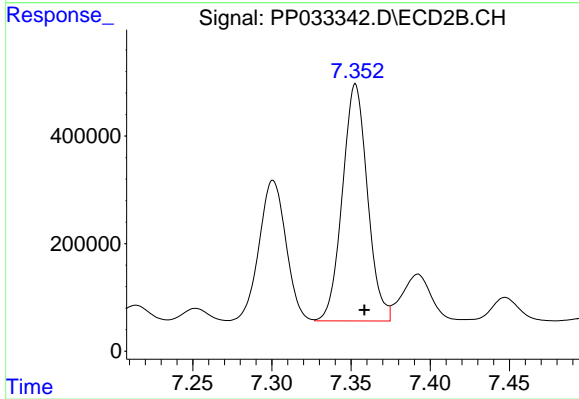
#29 AR-1254-4

R.T.: 6.936 min
 Delta R.T.: 0.003 min
 Response: 266968
 Conc: 178.80 ng/ml



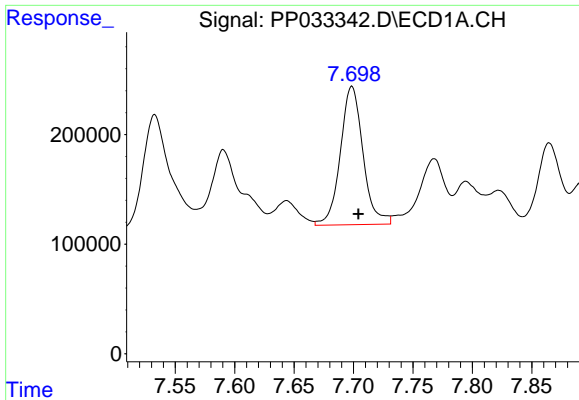
#30 AR-1254-5

R.T.: 8.252 min
 Delta R.T.: -0.005 min
 Response: 2049573
 Conc: 847.01 ng/ml



#30 AR-1254-5

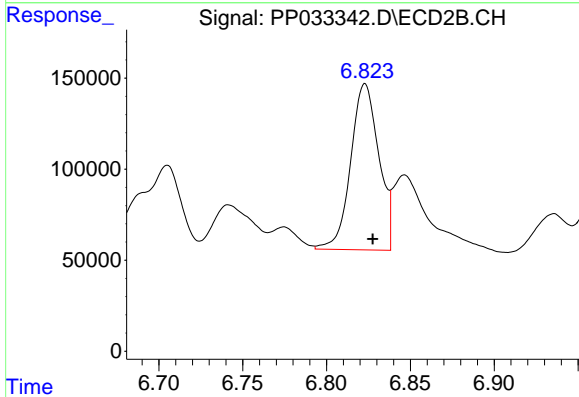
R.T.: 7.353 min
 Delta R.T.: -0.006 min
 Response: 4853684
 Conc: 2004.51 ng/ml



#31 AR-1260-1

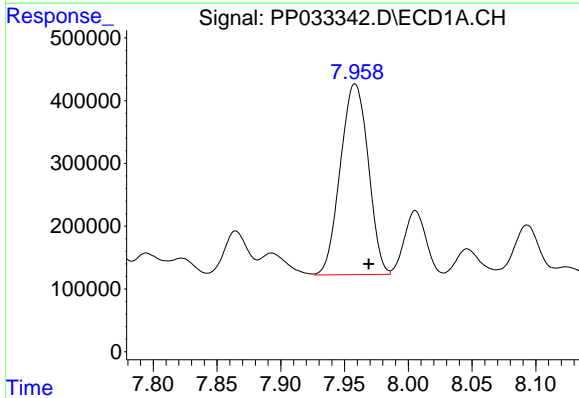
R.T.: 7.699 min
 Delta R.T.: -0.005 min
 Response: 1674838
 Conc: 765.00 ng/ml

Instrument :
 ECD_P
 ClientSampleId :
 72-11939MSD



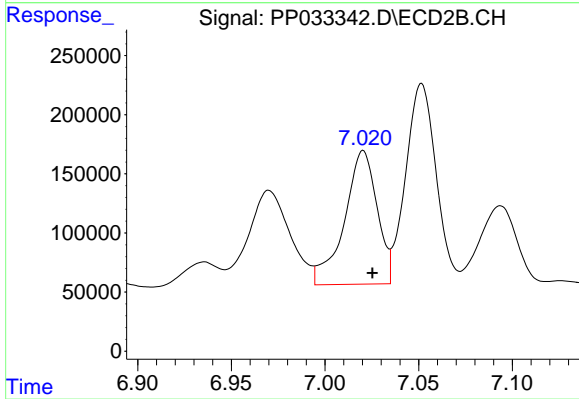
#31 AR-1260-1

R.T.: 6.823 min
 Delta R.T.: -0.005 min
 Response: 1066091
 Conc: 621.55 ng/ml



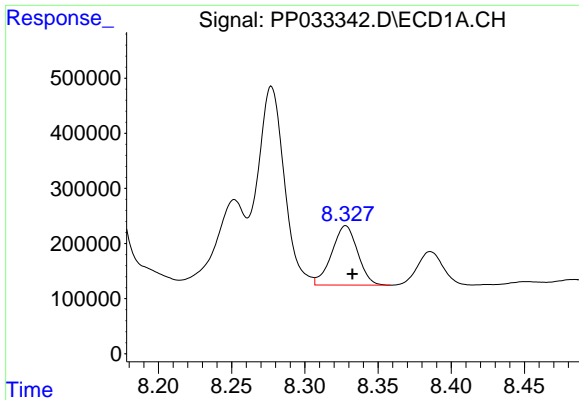
#32 AR-1260-2

R.T.: 7.958 min
 Delta R.T.: -0.011 min
 Response: 4628444
 Conc: 1583.65 ng/ml



#32 AR-1260-2

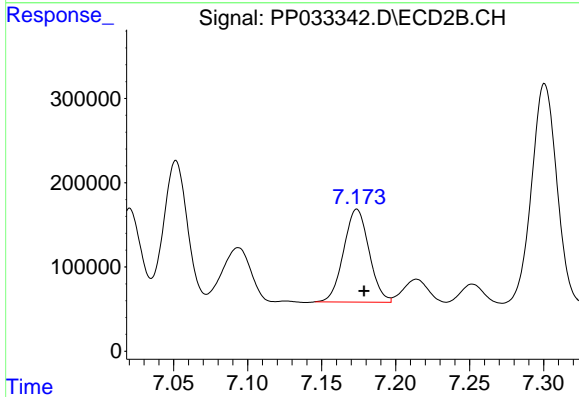
R.T.: 7.020 min
 Delta R.T.: -0.005 min
 Response: 1373508
 Conc: 679.75 ng/ml



#33 AR-1260-3

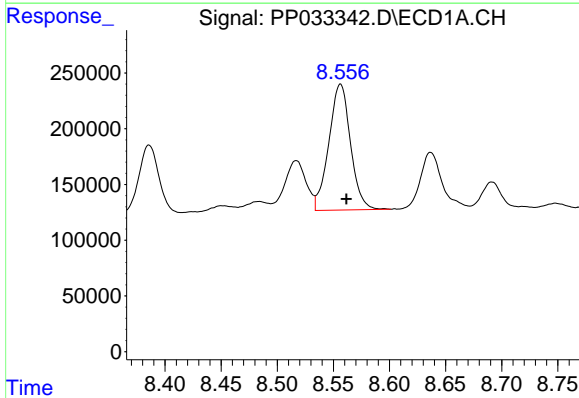
R.T.: 8.328 min
 Delta R.T.: -0.005 min
 Response: 1327037
 Conc: 518.50 ng/ml

Instrument :
 ECD_P
 ClientSampleId :
 72-11939MSD



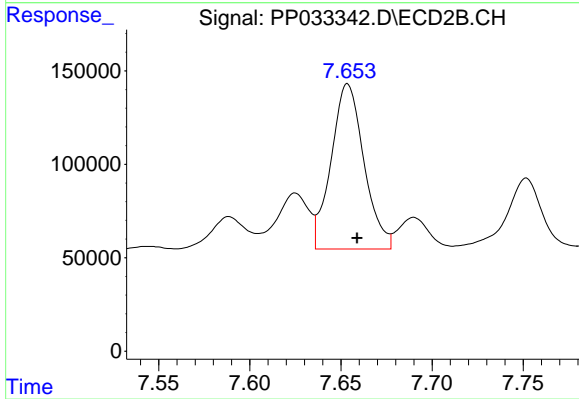
#33 AR-1260-3

R.T.: 7.174 min
 Delta R.T.: -0.005 min
 Response: 1319687
 Conc: 665.23 ng/ml



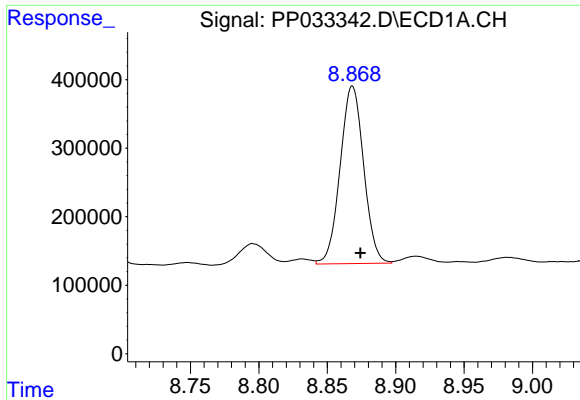
#34 AR-1260-4

R.T.: 8.556 min
 Delta R.T.: -0.005 min
 Response: 1517260
 Conc: 621.05 ng/ml



#34 AR-1260-4

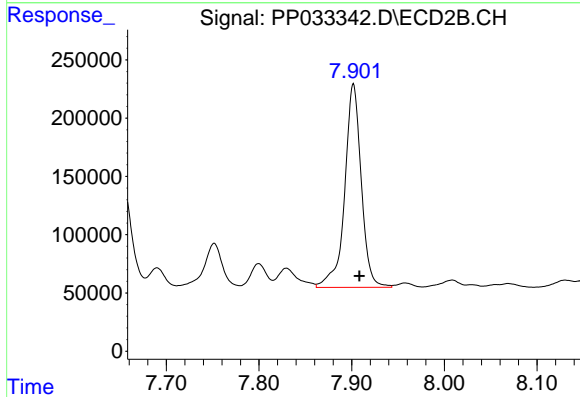
R.T.: 7.654 min
 Delta R.T.: -0.005 min
 Response: 1110777
 Conc: 660.27 ng/ml



#35 AR-1260-5

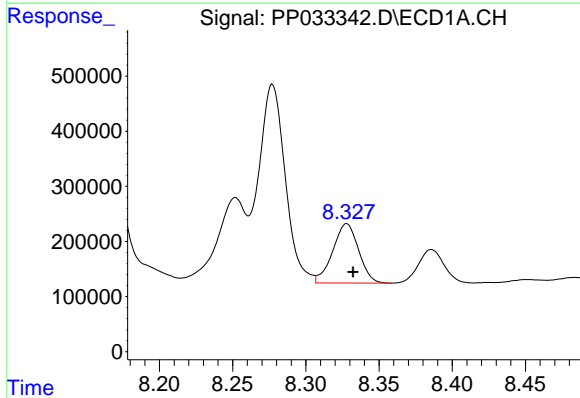
R.T.: 8.868 min
 Delta R.T.: -0.006 min
 Response: 3098744
 Conc: 575.66 ng/ml

Instrument :
 ECD_P
 ClientSampleId :
 72-11939MSD



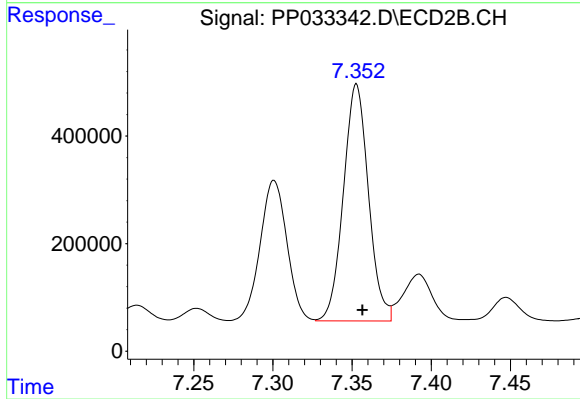
#35 AR-1260-5

R.T.: 7.902 min
 Delta R.T.: -0.006 min
 Response: 2170140
 Conc: 564.01 ng/ml



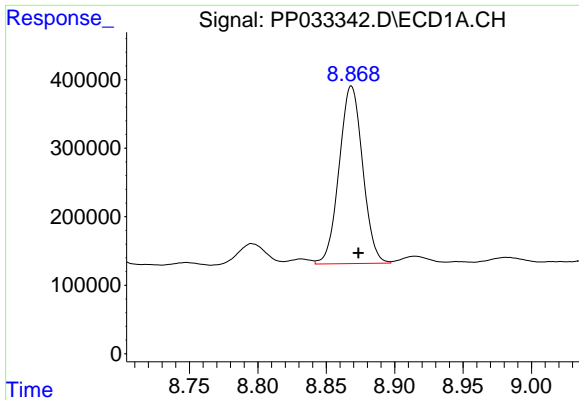
#36 AR-1262-1

R.T.: 8.328 min
 Delta R.T.: -0.004 min
 Response: 1327037
 Conc: 349.06 ng/ml



#36 AR-1262-1

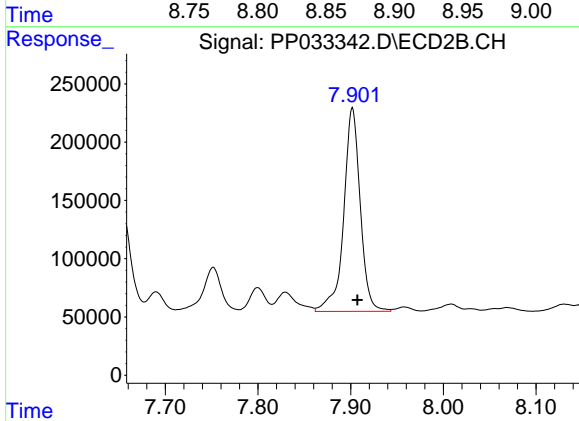
R.T.: 7.353 min
 Delta R.T.: -0.004 min
 Response: 4853684
 Conc: 3897.15 ng/ml



#37 AR-1262-2

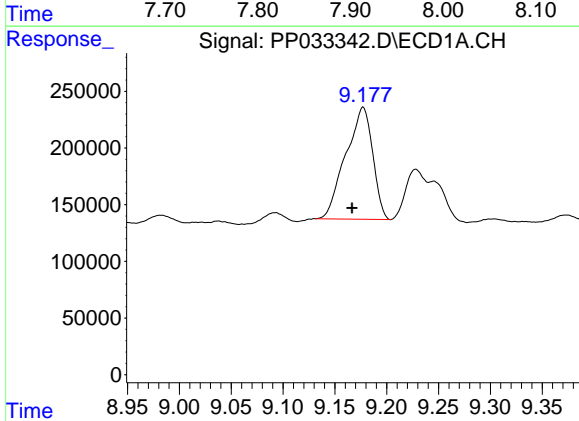
R.T.: 8.868 min
 Delta R.T.: -0.005 min
 Response: 3098744
 Conc: 494.94 ng/ml

Instrument :
 ECD_P
 ClientSampleId :
 72-11939MSD



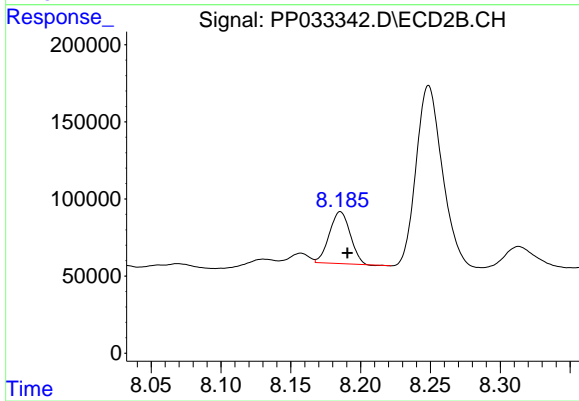
#37 AR-1262-2

R.T.: 7.902 min
 Delta R.T.: -0.005 min
 Response: 2170140
 Conc: 493.49 ng/ml



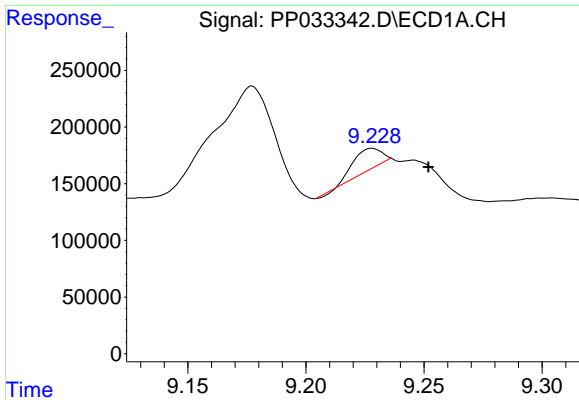
#38 AR-1262-3

R.T.: 9.177 min
 Delta R.T.: 0.010 min
 Response: 1789243
 Conc: 436.46 ng/ml



#38 AR-1262-3

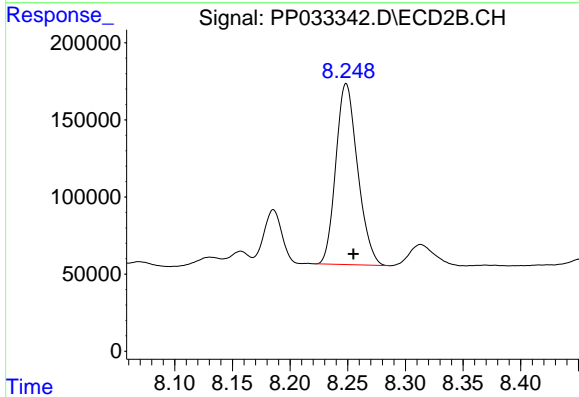
R.T.: 8.186 min
 Delta R.T.: -0.005 min
 Response: 350285
 Conc: 185.95 ng/ml



#39 AR-1262-4

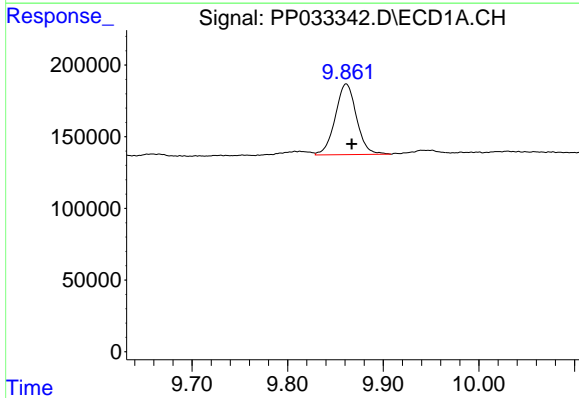
R.T.: 9.228 min
 Delta R.T.: -0.024 min
 Response: 163486
 Conc: 52.44 ng/ml

Instrument :
 ECD_P
 ClientSampleId :
 72-11939MSD



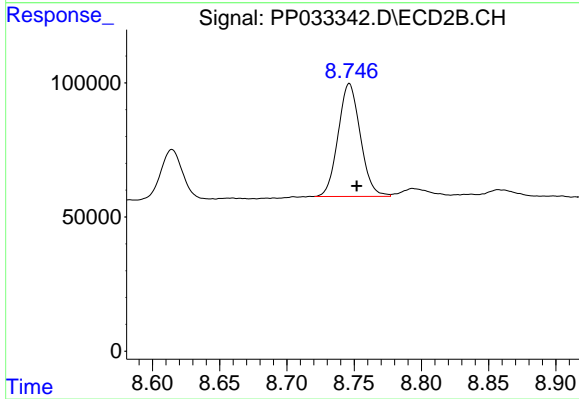
#39 AR-1262-4

R.T.: 8.249 min
 Delta R.T.: -0.006 min
 Response: 1535366
 Conc: 450.04 ng/ml



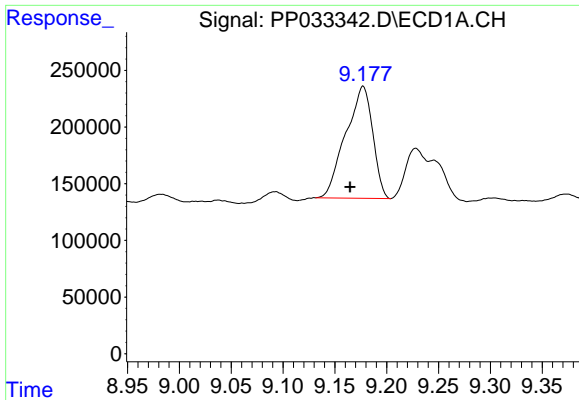
#40 AR-1262-5

R.T.: 9.861 min
 Delta R.T.: -0.006 min
 Response: 761311
 Conc: 369.91 ng/ml



#40 AR-1262-5

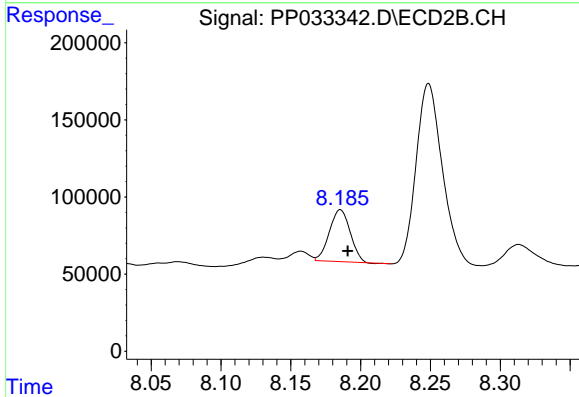
R.T.: 8.746 min
 Delta R.T.: -0.006 min
 Response: 481894
 Conc: 312.67 ng/ml



#41 AR-1268-1

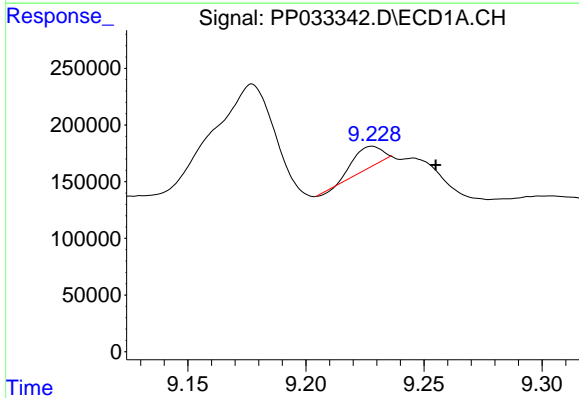
R.T.: 9.177 min
 Delta R.T.: 0.013 min
 Response: 1789243
 Conc: 237.56 ng/ml

Instrument :
 ECD_P
 ClientSampleId :
 72-11939MSD



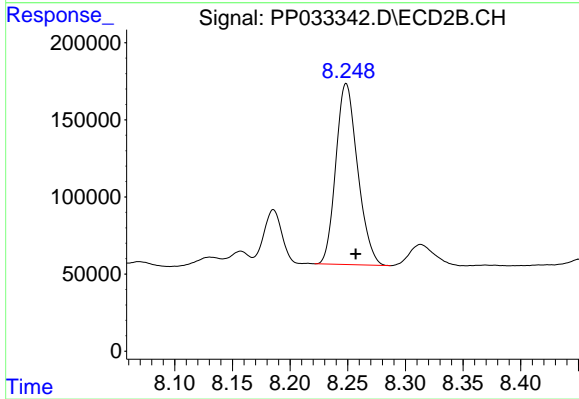
#41 AR-1268-1

R.T.: 8.186 min
 Delta R.T.: -0.005 min
 Response: 350285
 Conc: 67.71 ng/ml



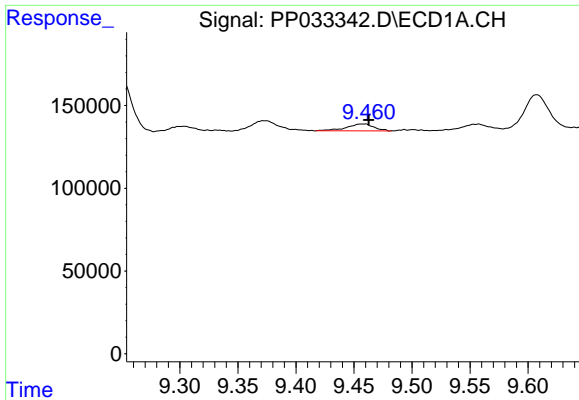
#42 AR-1268-2

R.T.: 9.228 min
 Delta R.T.: -0.027 min
 Response: 163486
 Conc: 25.32 ng/ml



#42 AR-1268-2

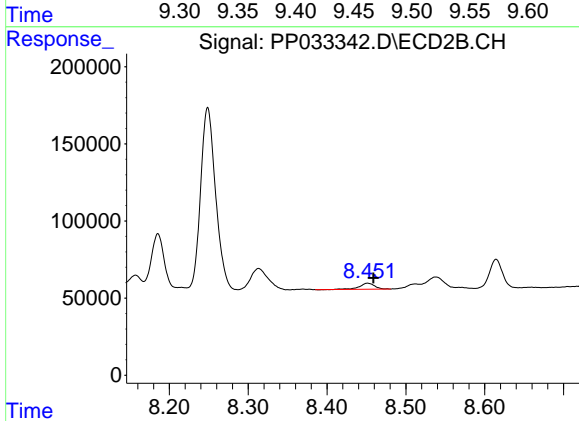
R.T.: 8.249 min
 Delta R.T.: -0.008 min
 Response: 1535366
 Conc: 312.16 ng/ml



#43 AR-1268-3

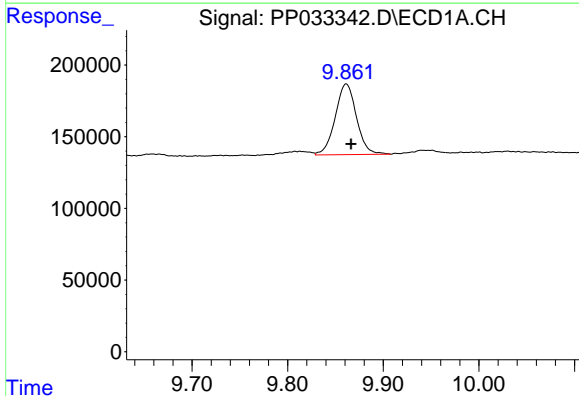
R.T.: 9.459 min
 Delta R.T.: -0.004 min
 Response: 68526
 Conc: 11.16 ng/ml

Instrument :
 ECD_P
 ClientSampleId :
 72-11939MSD



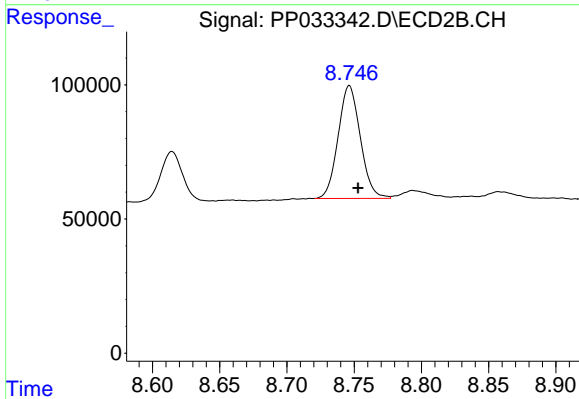
#43 AR-1268-3

R.T.: 8.451 min
 Delta R.T.: -0.007 min
 Response: 52086
 Conc: 11.92 ng/ml



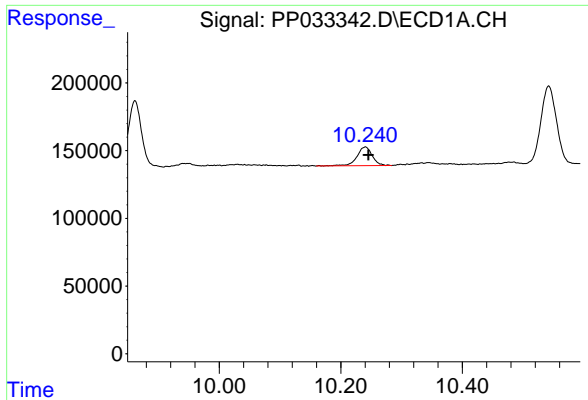
#44 AR-1268-4

R.T.: 9.861 min
 Delta R.T.: -0.005 min
 Response: 761311
 Conc: 350.72 ng/ml



#44 AR-1268-4

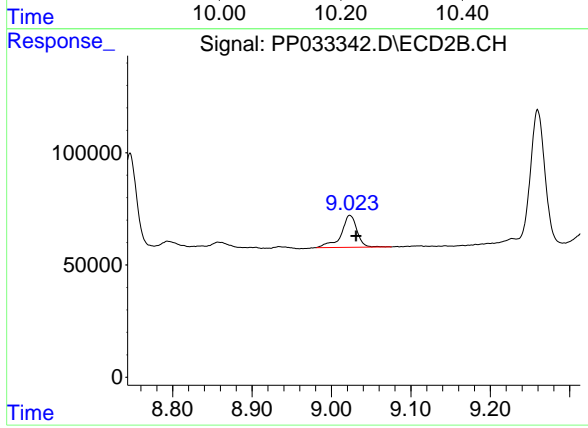
R.T.: 8.746 min
 Delta R.T.: -0.006 min
 Response: 481894
 Conc: 290.02 ng/ml



#45 AR-1268-5

R.T.: 10.241 min
Delta R.T.: -0.005 min
Response: 244767
Conc: 14.95 ng/ml

Instrument :
ECD_P
ClientSampled :
72-11939MSD



#45 AR-1268-5

R.T.: 9.023 min
Delta R.T.: -0.008 min
Response: 198370
Conc: 15.52 ng/ml