

Data Path : Z:\pestpcbsrv\HPCHEM1\ECD_P\Data\PP021522\
 Data File : PP043757.D
 Signal(s) : Signal #1: ECD1A.ch Signal #2: ECD2B.ch
 Acq On : 15 Feb 2022 18:44
 Operator : YP\AJ
 Sample : N1544-06 10X
 Misc :
 ALS Vial : 24 Sample Multiplier: 1

Instrument :
 ECD_P
ClientSampleId :
 06-A-06-B-06-C

Integration File signal 1: autoint1.e
 Integration File signal 2: autoint2.e
 Quant Time: Feb 16 00:44:45 2022
 Quant Method : Z:\pestpcbsrv\HPCHEM1\ECD_P\methods\PP021022.M
 Quant Title : GC EXTRACTABLES
 QLast Update : Fri Feb 11 04:48:05 2022
 Response via : Initial Calibration
 Integrator: ChemStation

Volume Inj. : 2 µl
 Signal #1 Phase : ZB-MR1 Signal #2 Phase: ZB-MR2
 Signal #1 Info : 30Mx0.32mmx 0.50µ Signal #2 Info : 30M x 0.32mm x 0.25µm

| Compound | RT#1 | RT#2 | Resp#1 | Resp#2 | ng/ml | ng/ml |
|-----------------------------|--------|-------|---------|---------|--------|---------|
| ----- | | | | | | |
| System Monitoring Compounds | | | | | | |
| 1) SA Tetrachlo... | 3.918 | 3.174 | 4404208 | 4701280 | 1.992 | 2.503m# |
| 2) SA Decachlor... | 10.064 | 8.548 | 3486252 | 4143440 | 2.935m | 2.554 |

Target Compounds

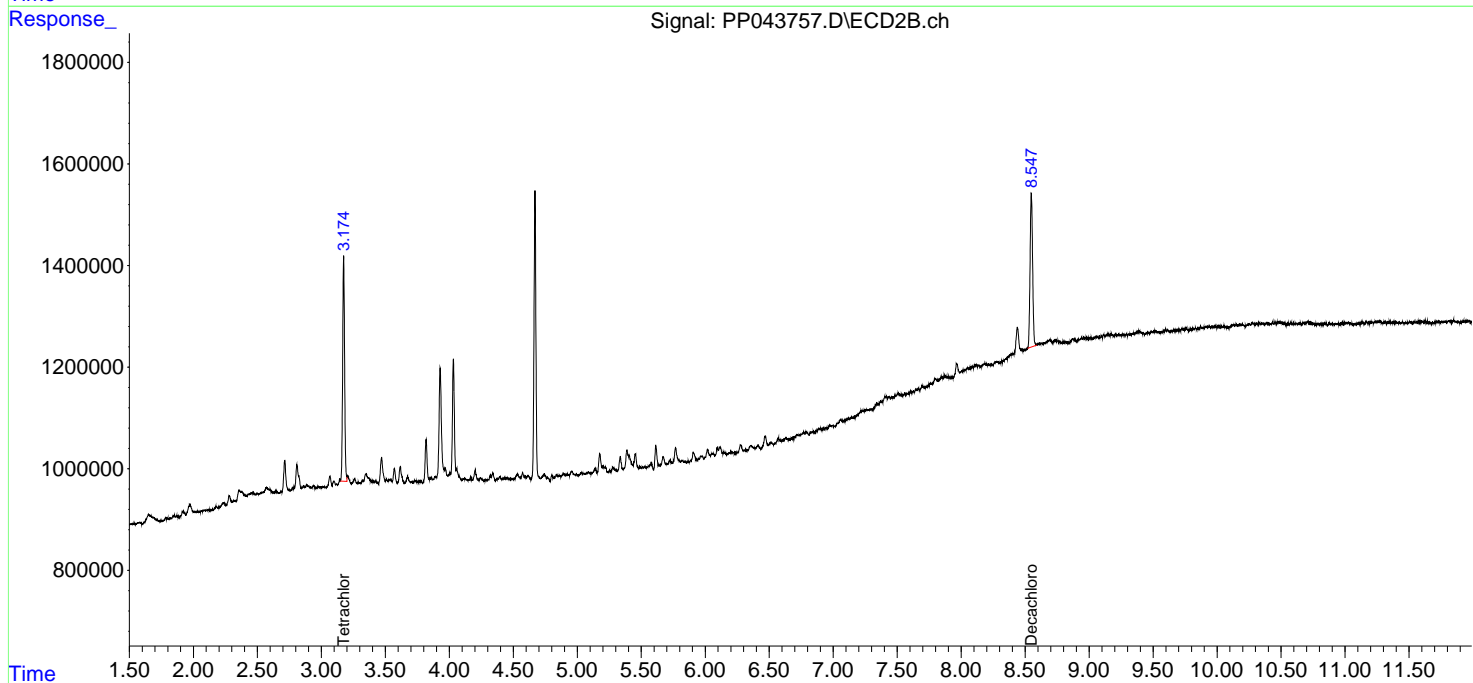
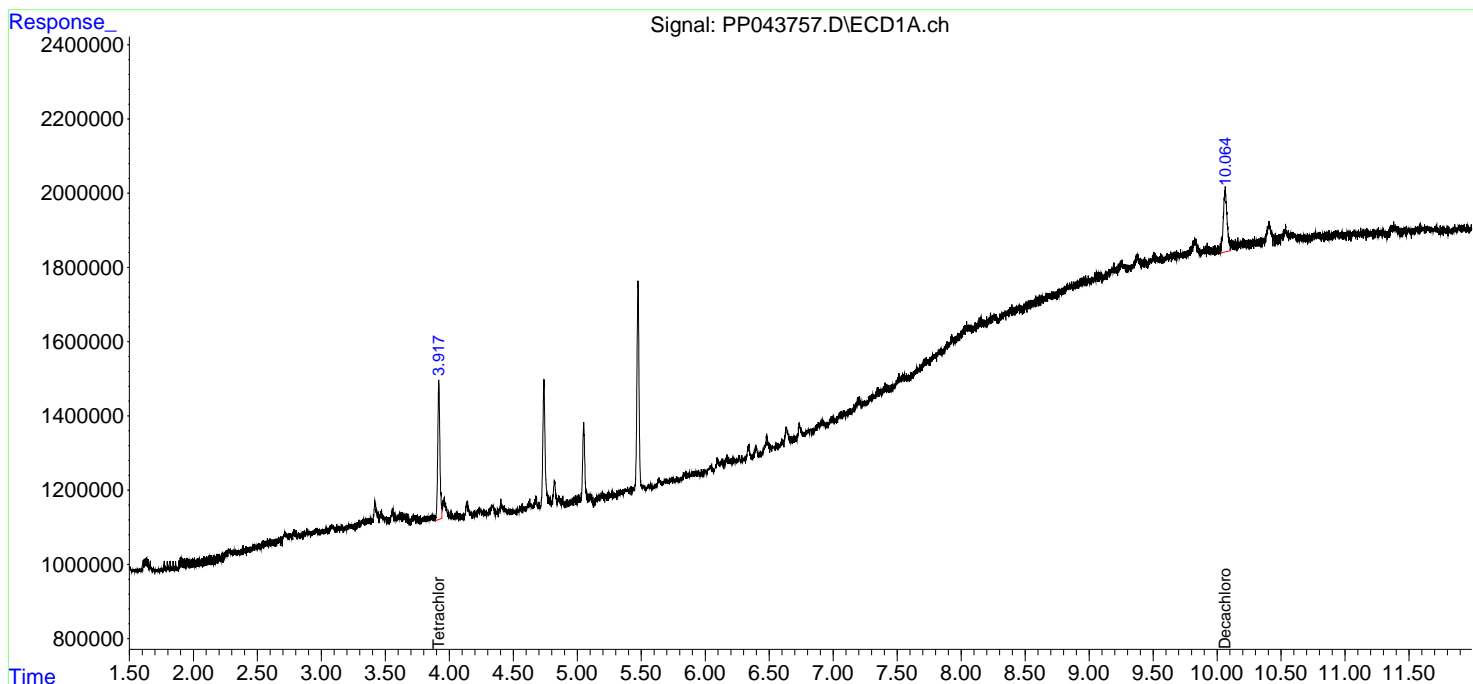
 (f)=RT Delta > 1/2 Window (#)=Amounts differ by > 25% (m)=manual int.

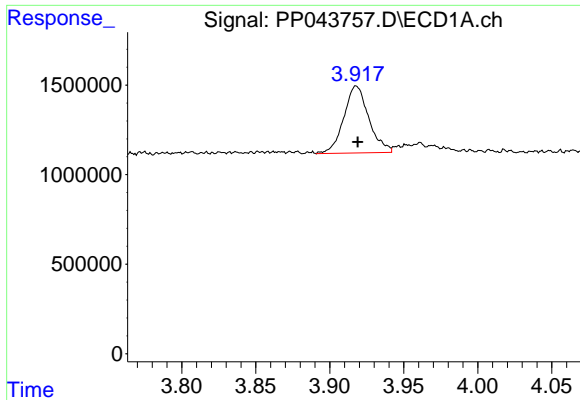
Data Path : Z:\pestpcbsrv\HPCHEM1\ECD_P\Data\PP021522\
 Data File : PP043757.D
 Signal(s) : Signal #1: ECD1A.ch Signal #2: ECD2B.ch
 Acq On : 15 Feb 2022 18:44
 Operator : YP\AJ
 Sample : N1544-06 10X
 Misc :
 ALS Vial : 24 Sample Multiplier: 1

Instrument :
 ECD_P
 ClientSampleId :
 06-A-06-B-06-C

Integration File signal 1: autoint1.e
 Integration File signal 2: autoint2.e
 Quant Time: Feb 16 00:44:45 2022
 Quant Method : Z:\pestpcbsrv\HPCHEM1\ECD_P\methods\PP021022.M
 Quant Title : GC EXTRACTABLES
 QLast Update : Fri Feb 11 04:48:05 2022
 Response via : Initial Calibration
 Integrator: ChemStation

Volume Inj. : 2 µl
 Signal #1 Phase : ZB-MR1 Signal #2 Phase: ZB-MR2
 Signal #1 Info : 30Mx0.32mmx 0.50µ Signal #2 Info : 30M x 0.32mm x 0.25µm

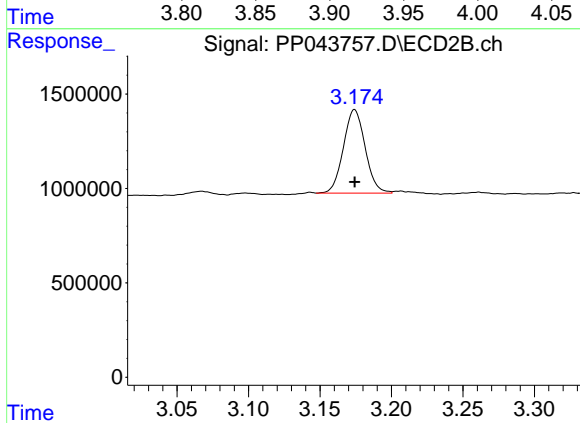




#1 Tetrachloro-m-xylene

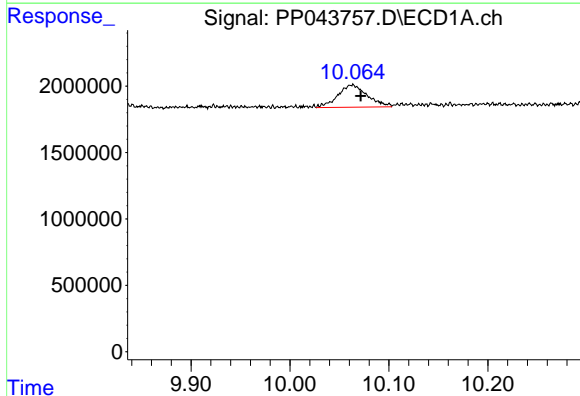
R.T.: 3.918 min
 Delta R.T.: -0.001 min
 Response: 4404208
 Conc: 1.99 ng/ml

Instrument :
 ECD_P
 ClientSampleId :
 06-A-06-B-06-C



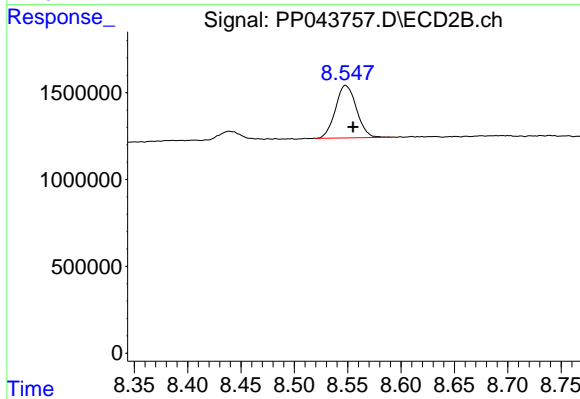
#1 Tetrachloro-m-xylene

R.T.: 3.174 min
 Delta R.T.: 0.000 min
 Response: 4701280
 Conc: 2.50 ng/ml m



#2 Decachlorobiphenyl

R.T.: 10.064 min
 Delta R.T.: -0.008 min
 Response: 3486252
 Conc: 2.93 ng/ml m



#2 Decachlorobiphenyl

R.T.: 8.548 min
 Delta R.T.: -0.007 min
 Response: 4143440
 Conc: 2.55 ng/ml