

Data Path : Z:\pestpcbsrv\HPCHEM1\ECD_L\Data\PL021623\
 Data File : PL080976.D
 Signal(s) : Signal #1: ECD1A.ch Signal #2: ECD2B.ch
 Acq On : 16 Feb 2023 13:30
 Operator : AR\AJ
 Sample : 01570-01
 Misc :
 ALS Vial : 13 Sample Multiplier: 1

Instrument :
 ECD_P
 ClientSampleId :

Integration File signal 1: autoint1.e
 Integration File signal 2: autoint2.e
 Quant Time: Feb 16 20:38:34 2023
 Quant Method : Z:\pestpcbsrv\HPCHEM1\ECD_L\methods\PL012023.M
 Quant Title : GC Extractables
 QLast Update : Sun Jan 22 23:56:48 2023
 Response via : Initial Calibration
 Integrator: ChemStation

Volume Inj. : 1 µl
 Signal #1 Phase : ZB-MR2 Signal #2 Phase: ZB-MR1
 Signal #1 Info : 30M x 0.32mm x0.2 Signal #2 Info : 30M x 0.32mm x0.5µm

	Compound	RT#1	RT#2	Resp#1	Resp#2	ng/ml	ng/ml

System Monitoring Compounds							
1)	SA Tetrachlo...	3.353	2.688	20851014	19847116	9.722	9.036
2)	SA Decachlor...	8.791	7.834	19373230	24248940	11.066	10.178
Target Compounds							
2)	A alpha-BHC	0.000	3.205	0	132936	N.D.	0.042 #
3)	MA gamma-BHC...	0.000	3.509	0	4052	N.D.	0.001 #
4)	MA Heptachlor	4.714	3.873	347871	266679	0.118	0.084 #
5)	MB Aldrin	0.000	4.138	0	755530	N.D.	0.256 #
6)	B beta-BHC	4.338	3.822	605146	104213	0.443	0.078 #
7)	B delta-BHC	4.571	4.042	1559061	146074	0.539	0.051 #
8)	Heptachlo...	5.477	4.665f	467917	302239	0.181	0.109 #
9)	A Endosulfan I	0.000	5.009	0	80564	N.D.	0.031 #
10)	B gamma-Chl...	5.730	4.914f	521930	576405	0.207	0.203
11)	B alpha-Chl...	5.817	4.957	639238	358523	0.253	0.125 #
12)	B 4,4'-DDE	5.988	5.145	3897779	3620182	1.750	1.535
13)	MA Dieldrin	6.130	5.276	214776	134396	0.090	0.050 #
15)	B Endosulfa...	6.568	0.000	800466	0	0.349	N.D. #
16)	A 4,4'-DDD	6.511	0.000	296733	0	0.162	N.D. #
17)	MA 4,4'-DDT	6.816	5.947	306456	547583	0.148	0.261 #
18)	B Endrin al...	0.000	6.042	0	77600	N.D.	0.042 #
19)	B Endosulfa...	0.000	6.247	0	203627	N.D.	0.088 #
21)	B Endrin ke...	7.410	6.740f	336129	5207	0.152	0.002 #
22)	Mirex	0.000	6.930	0	29797	N.D.	0.013 #
23)	Chlordane-1	0.000	3.684	0	243239	N.D.	2.987 #
24)	Chlordane-2	0.000	4.259	0	49474	N.D.	0.549 #
25)	Chlordane-3	5.730	4.914f	521930	576405	1.545	2.185 #
26)	Chlordane-4	5.817	4.957	639238	358523	1.482	1.331
27)	Chlordane-5	0.000	5.650f	0	566058	N.D.	7.955 #

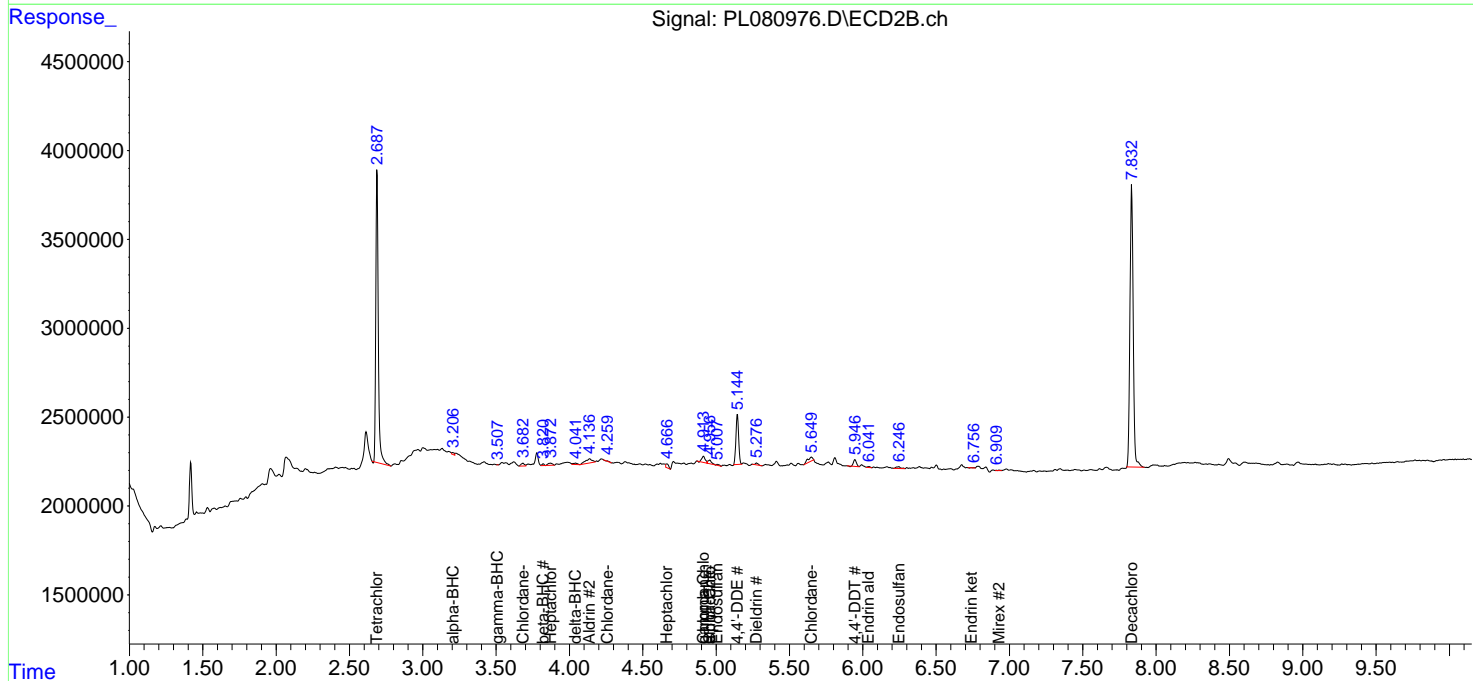
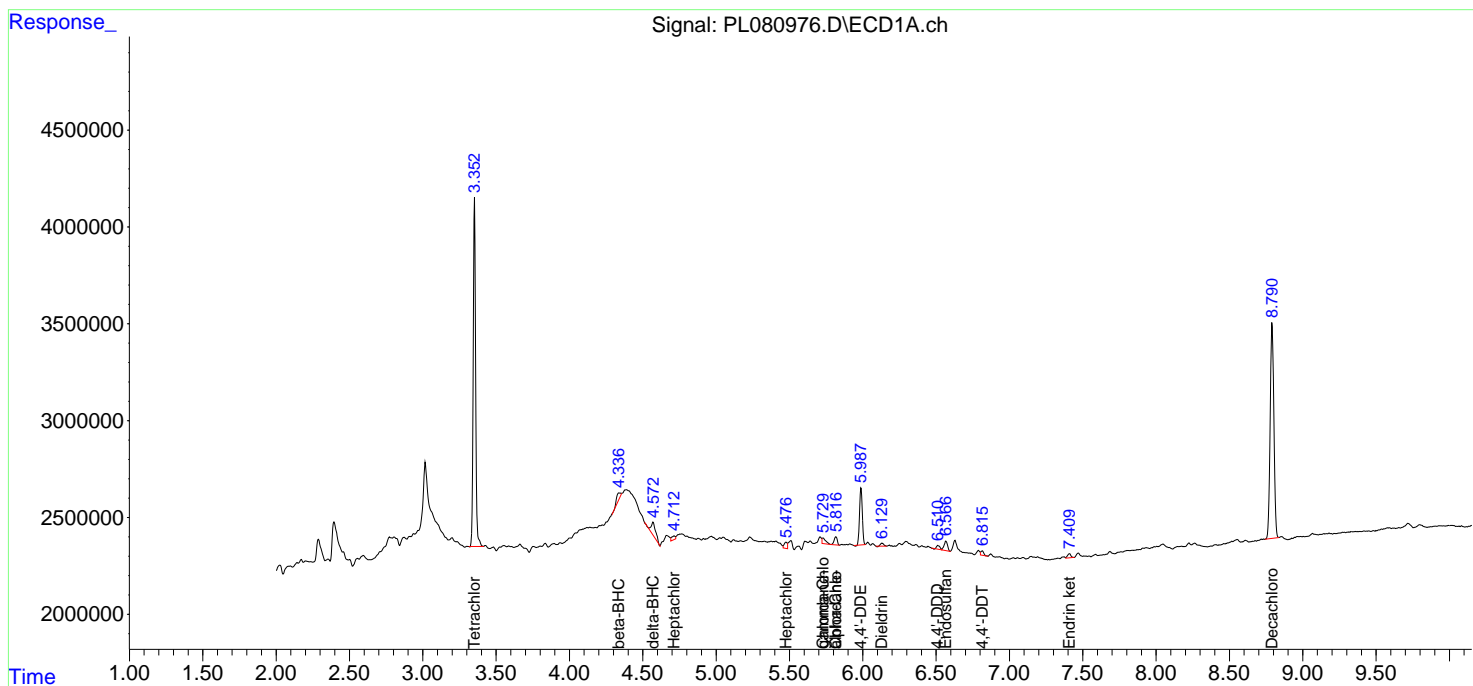
(f)=RT Delta > 1/2 Window (#)=Amounts differ by > 25% (m)=manual int.

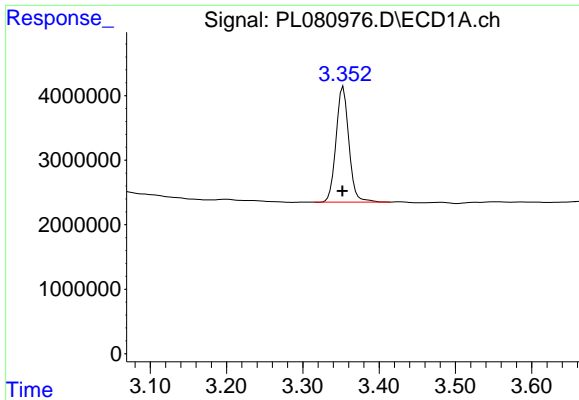
Data Path : Z:\pestpcbsrv\HPCHEM1\ECD_L\Data\PL021623\
 Data File : PL080976.D
 Signal(s) : Signal #1: ECD1A.ch Signal #2: ECD2B.ch
 Acq On : 16 Feb 2023 13:30
 Operator : AR\AJ
 Sample : 01570-01
 Misc :
 ALS Vial : 13 Sample Multiplier: 1

Instrument :
 ECD_P
 ClientSampleId :

Integration File signal 1: autoint1.e
 Integration File signal 2: autoint2.e
 Quant Time: Feb 16 20:38:34 2023
 Quant Method : Z:\pestpcbsrv\HPCHEM1\ECD_L\methods\PL012023.M
 Quant Title : GC Extractables
 QLast Update : Sun Jan 22 23:56:48 2023
 Response via : Initial Calibration
 Integrator: ChemStation

Volume Inj. : 1 µl
 Signal #1 Phase : ZB-MR2 Signal #2 Phase: ZB-MR1
 Signal #1 Info : 30M x 0.32mm x0.2 Signal #2 Info : 30M x 0.32mm x0.5µm

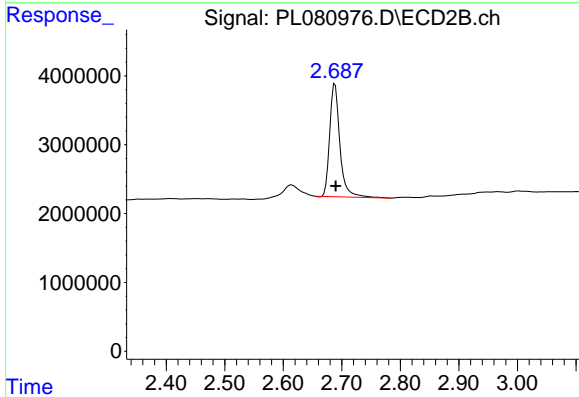




#1 Tetrachloro-m-xylene

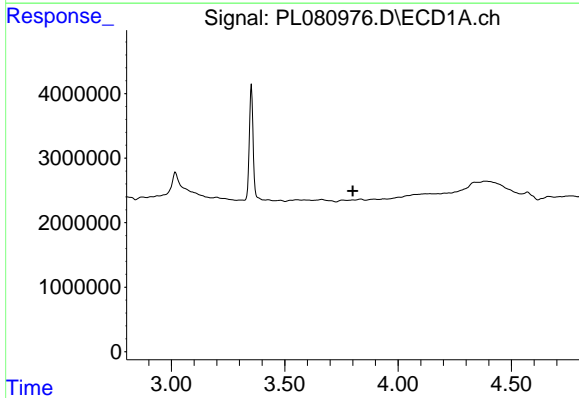
R.T.: 3.353 min
 Delta R.T.: 0.001 min
 Response: 20851014
 Conc: 9.72 ng/ml

Instrument :
 ECD_P
 ClientSampleId :



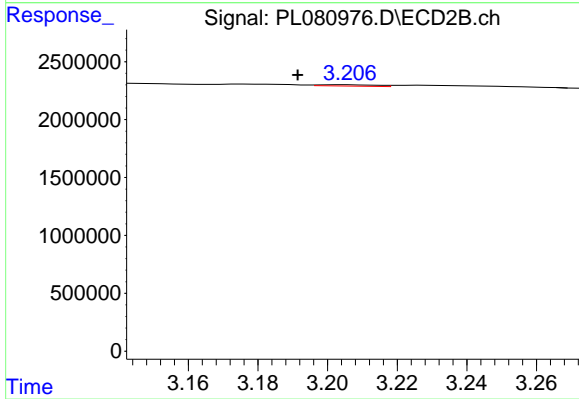
#1 Tetrachloro-m-xylene

R.T.: 2.688 min
 Delta R.T.: -0.001 min
 Response: 19847116
 Conc: 9.04 ng/ml



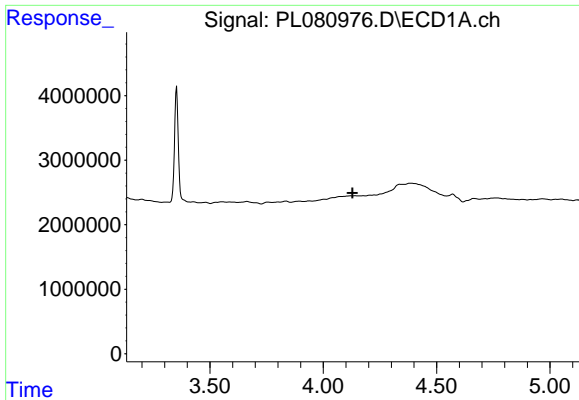
#2 alpha-BHC

R.T.: 0.000 min
 Exp R.T. : 3.801 min
 Response: 0
 Conc: N.D.



#2 alpha-BHC

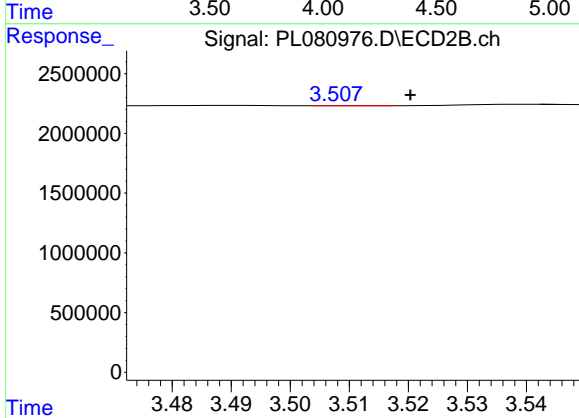
R.T.: 3.205 min
 Delta R.T.: 0.013 min
 Response: 132936
 Conc: 0.04 ng/ml



#3 gamma-BHC (Lindane)

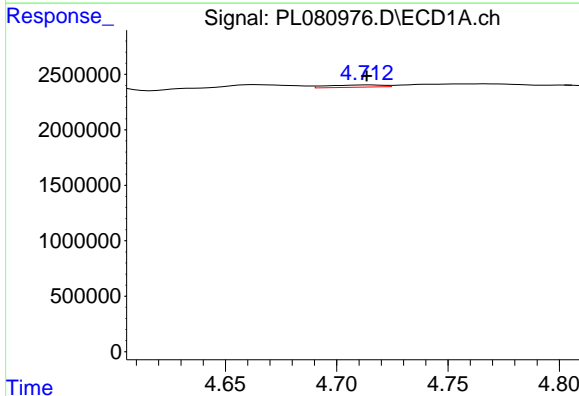
R.T.: 0.000 min
 Exp R.T.: 4.129 min
 Response: 0
 Conc: N.D.

Instrument :
 ECD_P
 ClientSampleId :



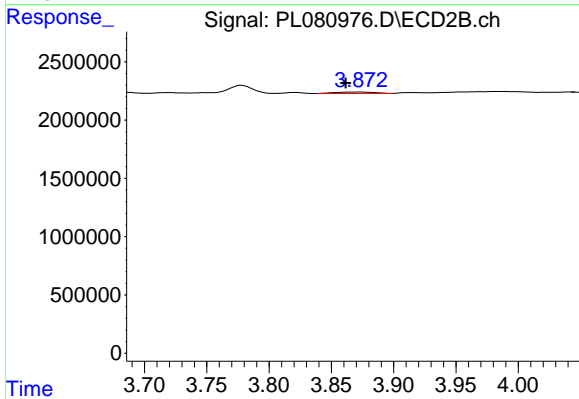
#3 gamma-BHC (Lindane)

R.T.: 3.509 min
 Delta R.T.: -0.011 min
 Response: 4052
 Conc: 0.00 ng/ml



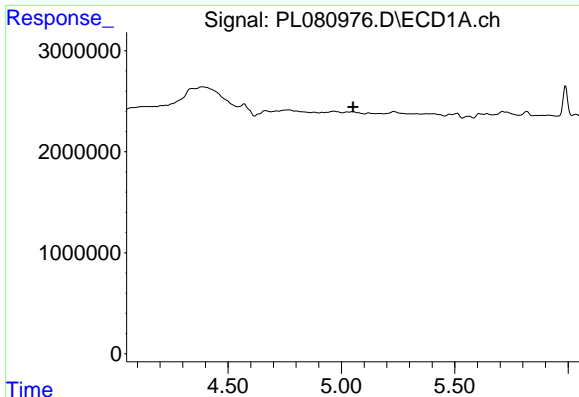
#4 Heptachlor

R.T.: 4.714 min
 Delta R.T.: 0.000 min
 Response: 347871
 Conc: 0.12 ng/ml



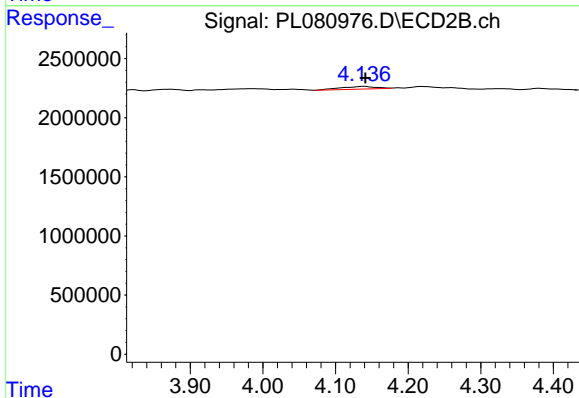
#4 Heptachlor

R.T.: 3.873 min
 Delta R.T.: 0.012 min
 Response: 266679
 Conc: 0.08 ng/ml

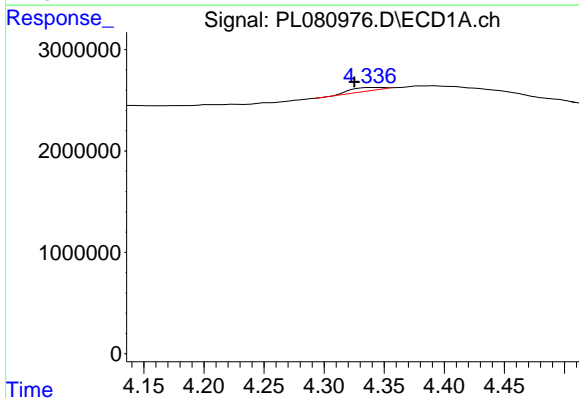


#5 Aldrin
 R.T.: 0.000 min
 Exp R.T.: 5.052 min
 Response: 0
 Conc: N.D.

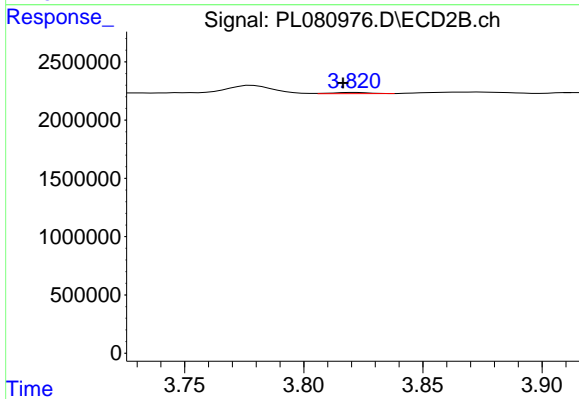
Instrument :
 ECD_P
 ClientSampleId :



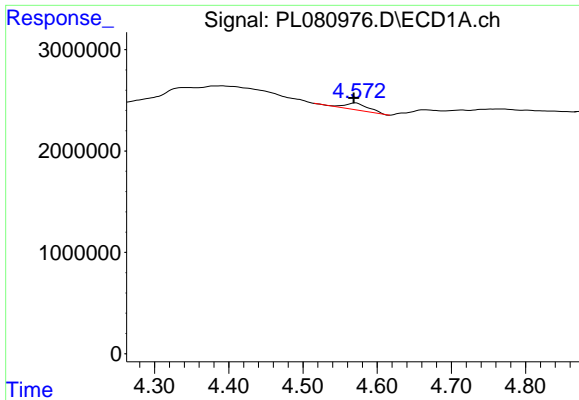
#5 Aldrin
 R.T.: 4.138 min
 Delta R.T.: -0.003 min
 Response: 755530
 Conc: 0.26 ng/ml



#6 beta-BHC
 R.T.: 4.338 min
 Delta R.T.: 0.013 min
 Response: 605146
 Conc: 0.44 ng/ml



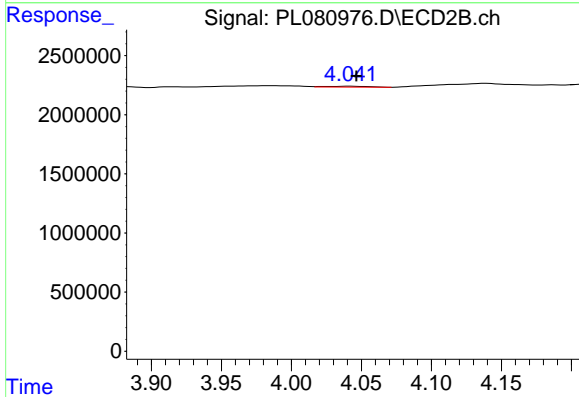
#6 beta-BHC
 R.T.: 3.822 min
 Delta R.T.: 0.005 min
 Response: 104213
 Conc: 0.08 ng/ml



#7 delta-BHC

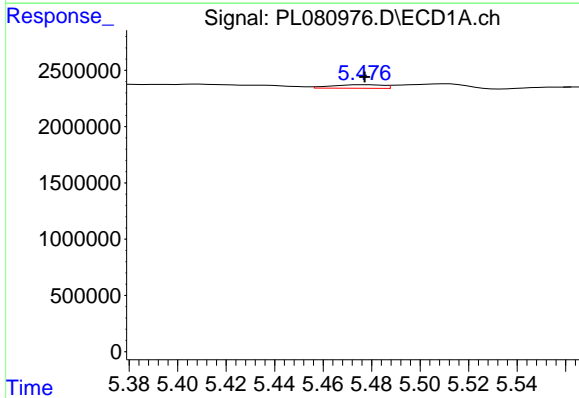
R.T.: 4.571 min
 Delta R.T.: 0.003 min
 Response: 1559061
 Conc: 0.54 ng/ml

Instrument :
 ECD_P
 ClientSampleId :



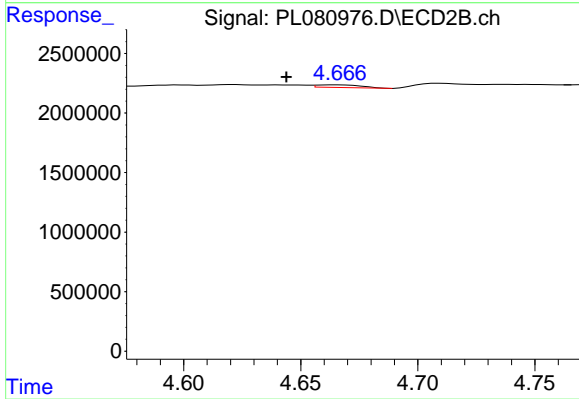
#7 delta-BHC

R.T.: 4.042 min
 Delta R.T.: -0.004 min
 Response: 146074
 Conc: 0.05 ng/ml



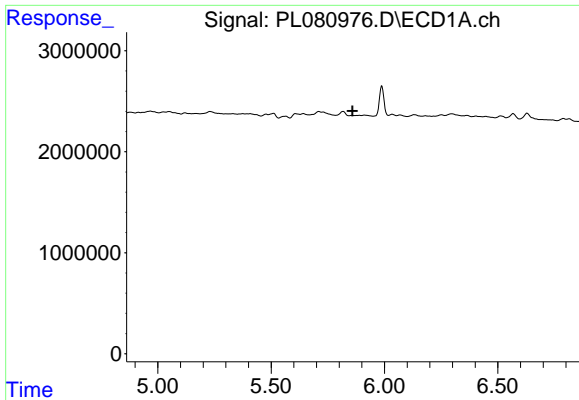
#8 Heptachlor epoxide

R.T.: 5.477 min
 Delta R.T.: 0.000 min
 Response: 467917
 Conc: 0.18 ng/ml



#8 Heptachlor epoxide

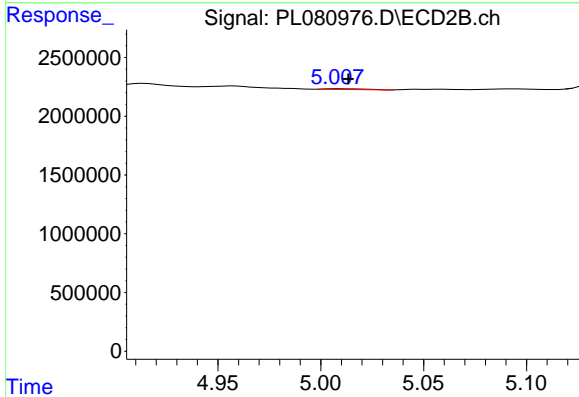
R.T.: 4.665 min
 Delta R.T.: 0.021 min
 Response: 302239
 Conc: 0.11 ng/ml



#9 Endosulfan I

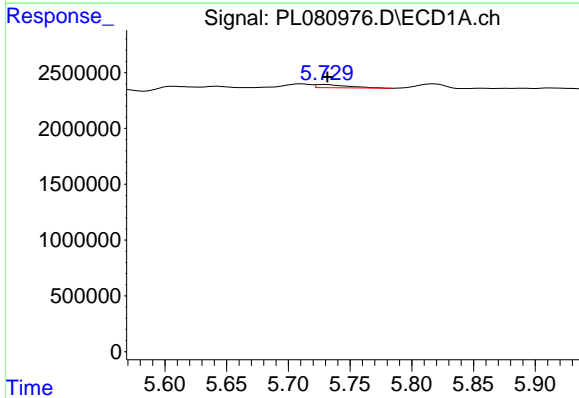
R.T.: 0.000 min
 Exp R.T.: 5.859 min
 Response: 0
 Conc: N.D.

Instrument :
 ECD_P
 ClientSampleId :



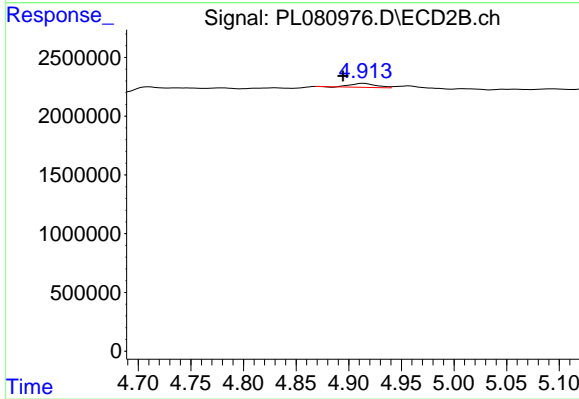
#9 Endosulfan I

R.T.: 5.009 min
 Delta R.T.: -0.005 min
 Response: 80564
 Conc: 0.03 ng/ml



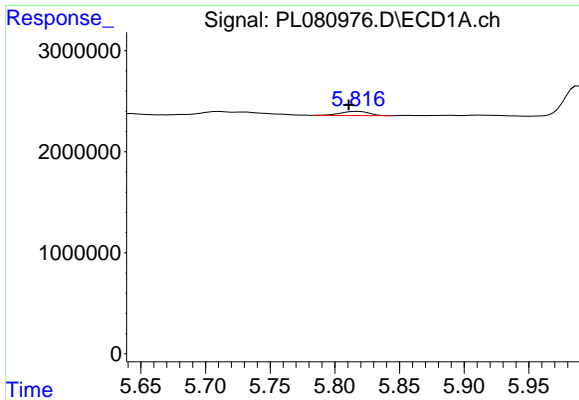
#10 gamma-Chlordane

R.T.: 5.730 min
 Delta R.T.: -0.001 min
 Response: 521930
 Conc: 0.21 ng/ml



#10 gamma-Chlordane

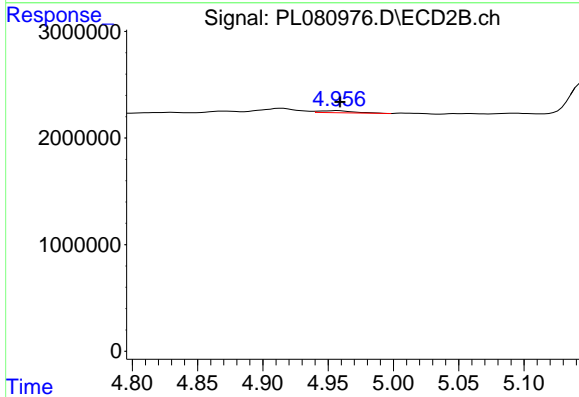
R.T.: 4.914 min
 Delta R.T.: 0.020 min
 Response: 576405
 Conc: 0.20 ng/ml



#11 alpha-Chlordane

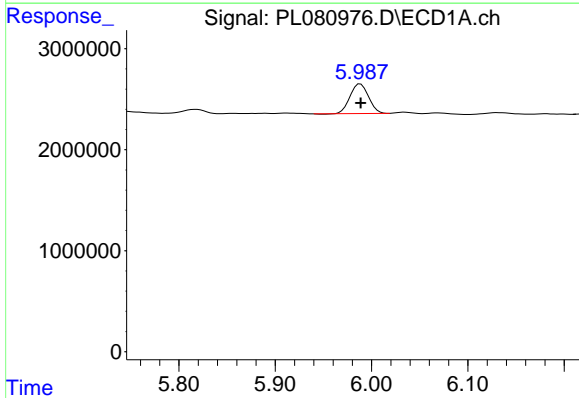
R.T.: 5.817 min
 Delta R.T.: 0.007 min
 Response: 639238
 Conc: 0.25 ng/ml

Instrument :
 ECD_P
 ClientSampleId :



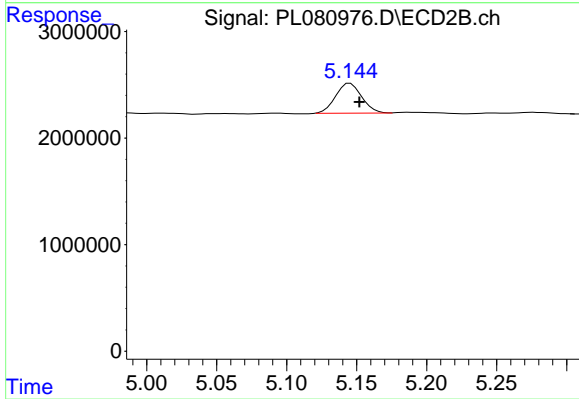
#11 alpha-Chlordane

R.T.: 4.957 min
 Delta R.T.: -0.002 min
 Response: 358523
 Conc: 0.13 ng/ml



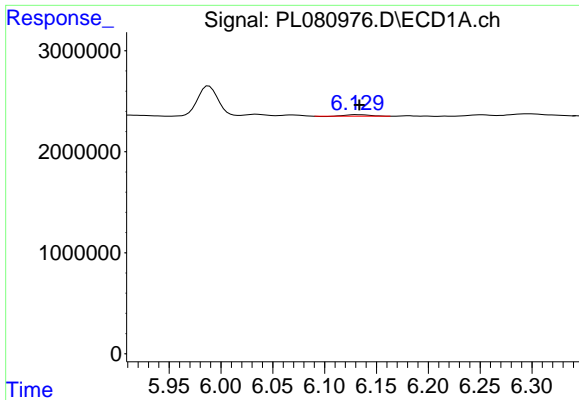
#12 4,4'-DDE

R.T.: 5.988 min
 Delta R.T.: 0.000 min
 Response: 3897779
 Conc: 1.75 ng/ml



#12 4,4'-DDE

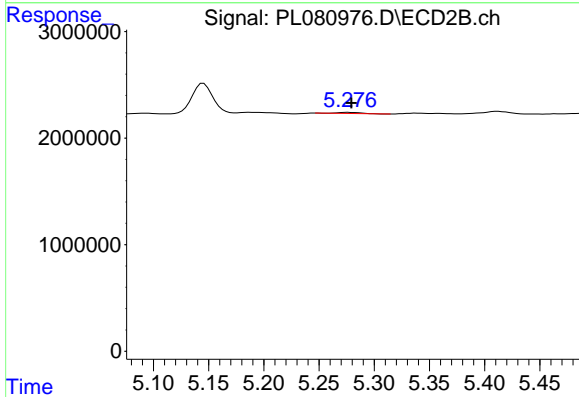
R.T.: 5.145 min
 Delta R.T.: -0.006 min
 Response: 3620182
 Conc: 1.53 ng/ml



#13 Dieldrin

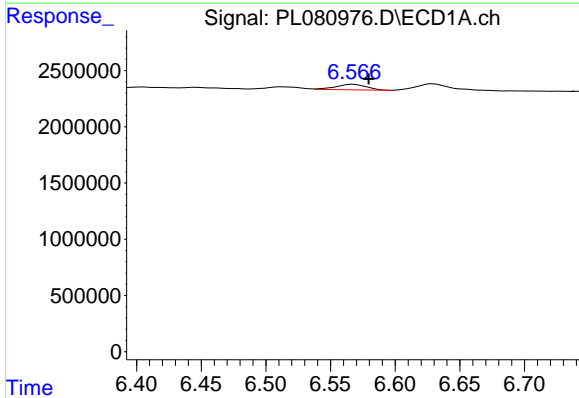
R.T.: 6.130 min
 Delta R.T.: -0.003 min
 Response: 214776
 Conc: 0.09 ng/ml

Instrument :
 ECD_P
 ClientSampleId :



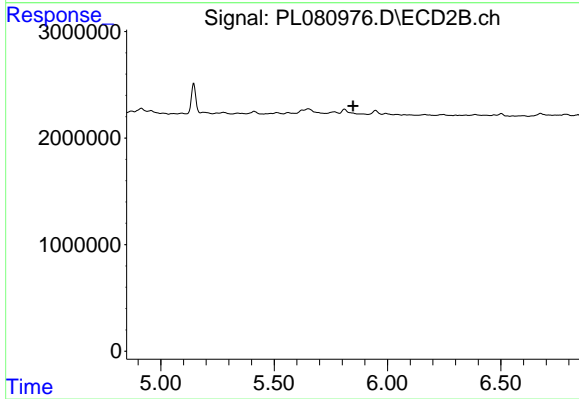
#13 Dieldrin

R.T.: 5.276 min
 Delta R.T.: -0.003 min
 Response: 134396
 Conc: 0.05 ng/ml



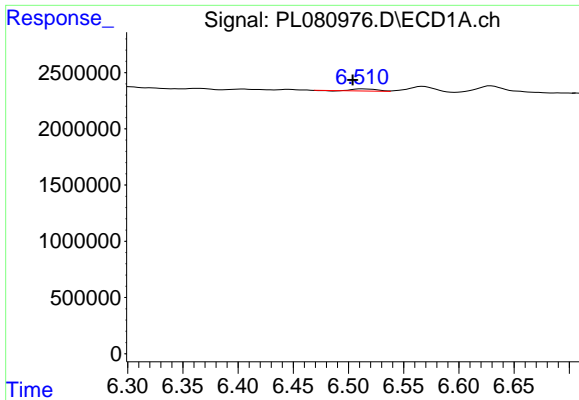
#15 Endosulfan II

R.T.: 6.568 min
 Delta R.T.: -0.012 min
 Response: 800466
 Conc: 0.35 ng/ml



#15 Endosulfan II

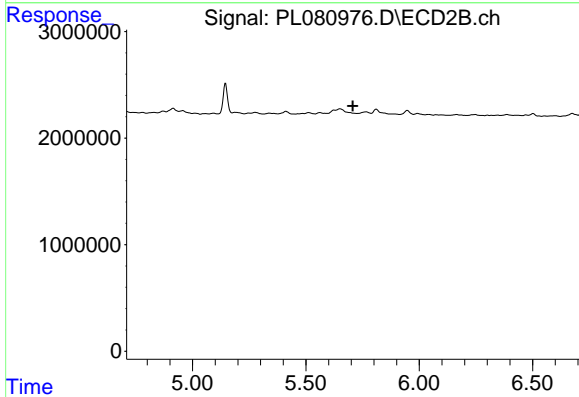
R.T.: 0.000 min
 Exp R.T. : 5.848 min
 Response: 0
 Conc: N.D.



#16 4,4'-DDD

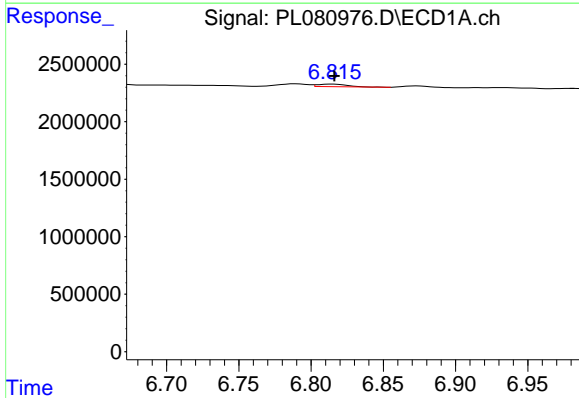
R.T.: 6.511 min
 Delta R.T.: 0.008 min
 Response: 296733
 Conc: 0.16 ng/ml

Instrument :
 ECD_P
 ClientSampleId :



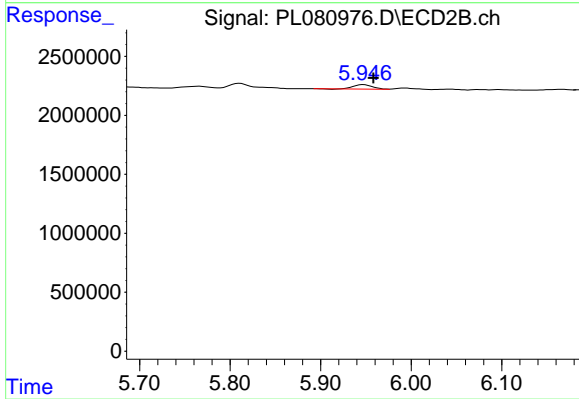
#16 4,4'-DDD

R.T.: 0.000 min
 Exp R.T. : 5.706 min
 Response: 0
 Conc: N.D.



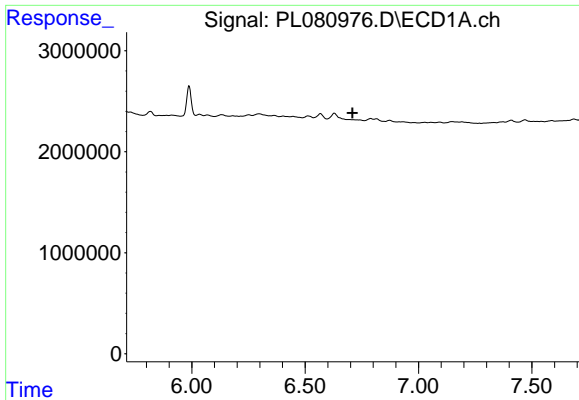
#17 4,4'-DDT

R.T.: 6.816 min
 Delta R.T.: 0.000 min
 Response: 306456
 Conc: 0.15 ng/ml



#17 4,4'-DDT

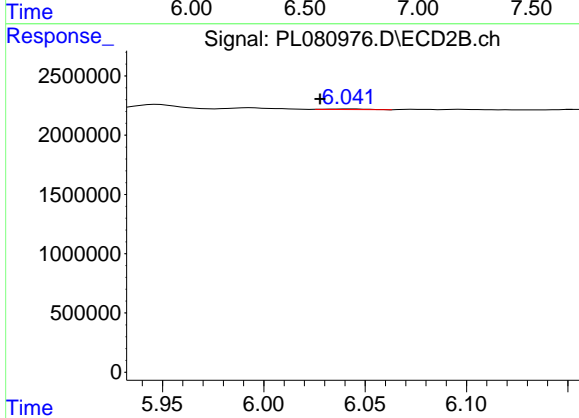
R.T.: 5.947 min
 Delta R.T.: -0.011 min
 Response: 547583
 Conc: 0.26 ng/ml



#18 Endrin aldehyde

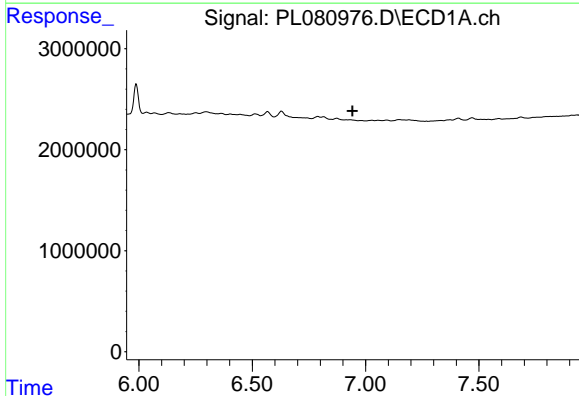
R.T.: 0.000 min
 Exp R.T.: 6.709 min
 Response: 0
 Conc: N.D.

Instrument :
 ECD_P
 ClientSampleId :



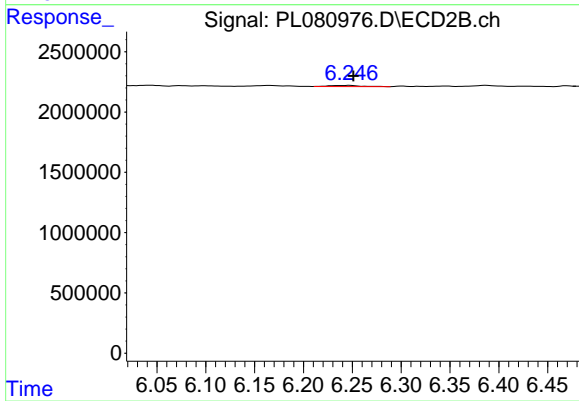
#18 Endrin aldehyde

R.T.: 6.042 min
 Delta R.T.: 0.015 min
 Response: 77600
 Conc: 0.04 ng/ml



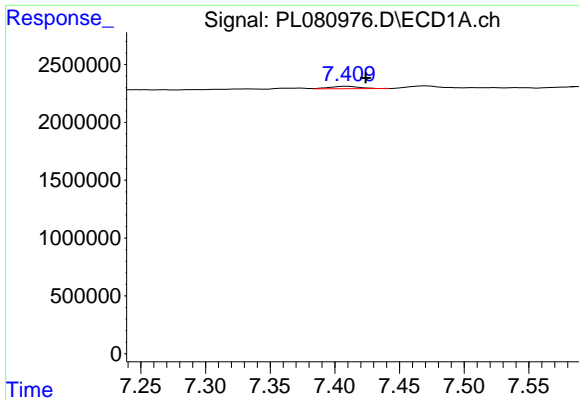
#19 Endosulfan Sulfate

R.T.: 0.000 min
 Exp R.T.: 6.943 min
 Response: 0
 Conc: N.D.



#19 Endosulfan Sulfate

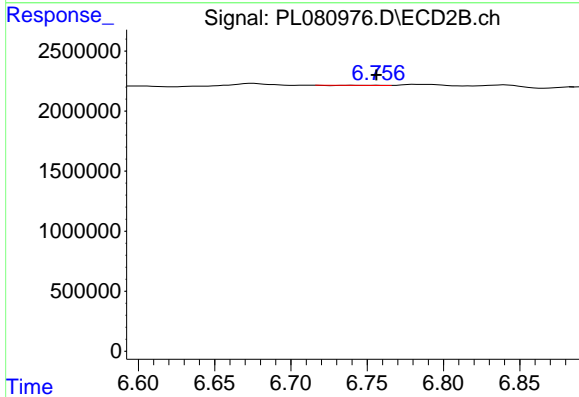
R.T.: 6.247 min
 Delta R.T.: -0.004 min
 Response: 203627
 Conc: 0.09 ng/ml



#21 Endrin ketone

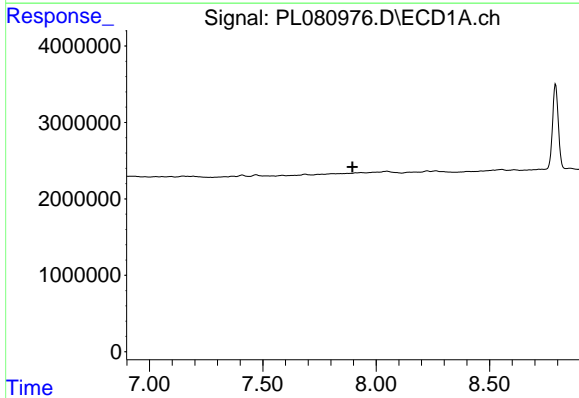
R.T.: 7.410 min
 Delta R.T.: -0.014 min
 Response: 336129
 Conc: 0.15 ng/ml

Instrument :
 ECD_P
 ClientSampleId :



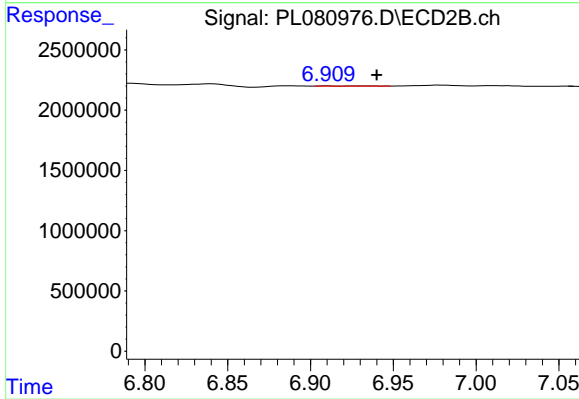
#21 Endrin ketone

R.T.: 6.740 min
 Delta R.T.: -0.016 min
 Response: 5207
 Conc: 0.00 ng/ml



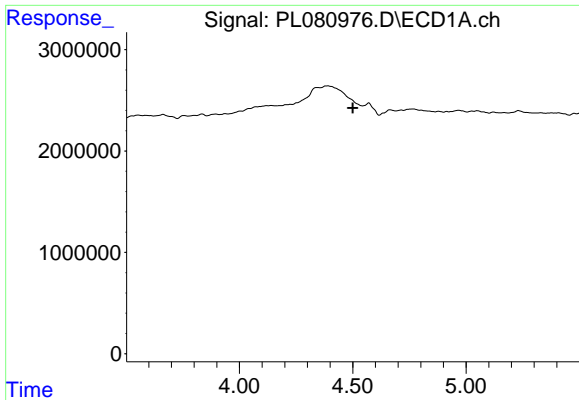
#22 Mirex

R.T.: 0.000 min
 Exp R.T. : 7.896 min
 Response: 0
 Conc: N.D.



#22 Mirex

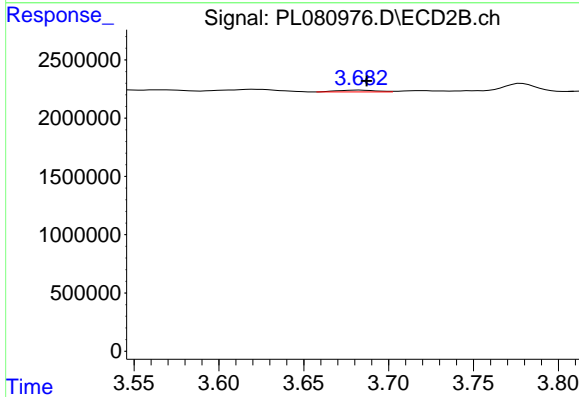
R.T.: 6.930 min
 Delta R.T.: -0.010 min
 Response: 29797
 Conc: 0.01 ng/ml



#23 Chlordane-1

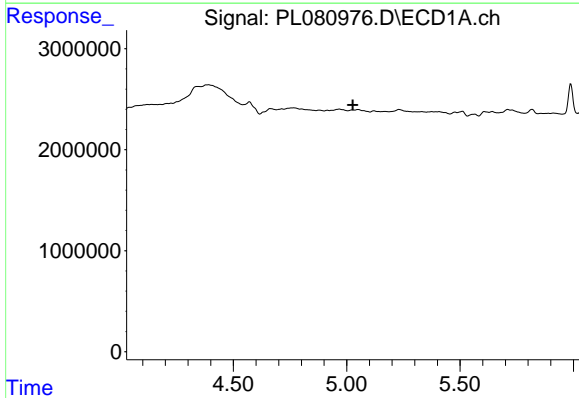
R.T.: 0.000 min
 Exp R.T.: 4.500 min
 Response: 0
 Conc: N.D.

Instrument :
 ECD_P
 ClientSampleId :



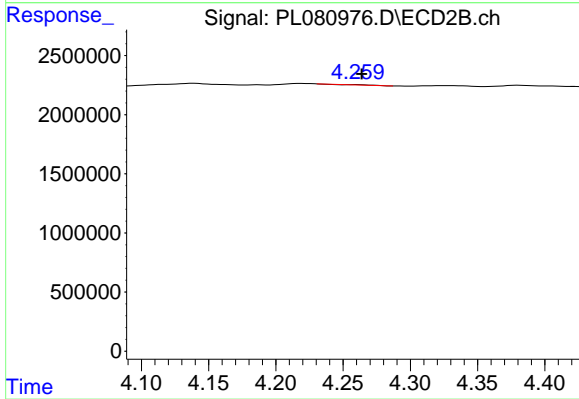
#23 Chlordane-1

R.T.: 3.684 min
 Delta R.T.: -0.003 min
 Response: 243239
 Conc: 2.99 ng/ml



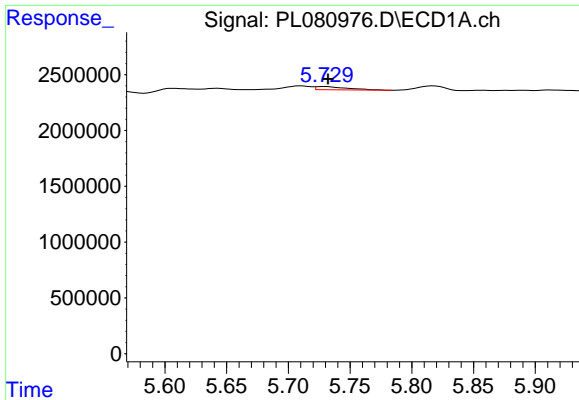
#24 Chlordane-2

R.T.: 0.000 min
 Exp R.T.: 5.027 min
 Response: 0
 Conc: N.D.



#24 Chlordane-2

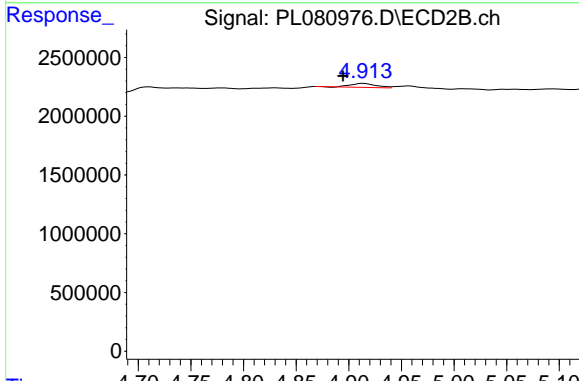
R.T.: 4.259 min
 Delta R.T.: -0.005 min
 Response: 49474
 Conc: 0.55 ng/ml



#25 Chlordane-3

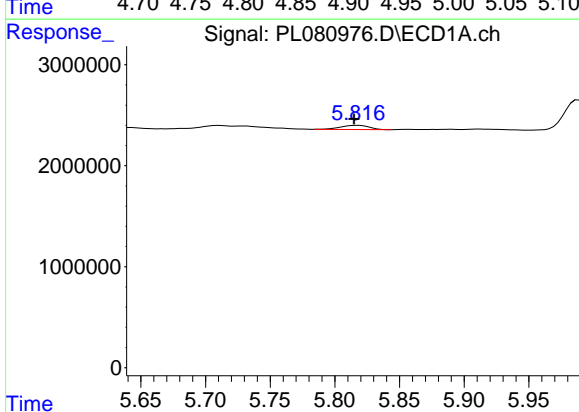
R.T.: 5.730 min
 Delta R.T.: -0.002 min
 Response: 521930
 Conc: 1.54 ng/ml

Instrument :
 ECD_P
 ClientSampleId :



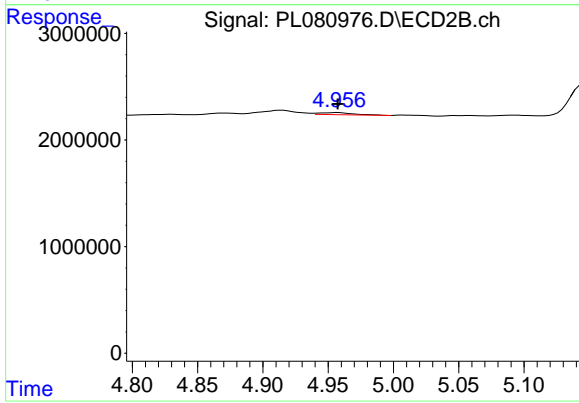
#25 Chlordane-3

R.T.: 4.914 min
 Delta R.T.: 0.020 min
 Response: 576405
 Conc: 2.19 ng/ml



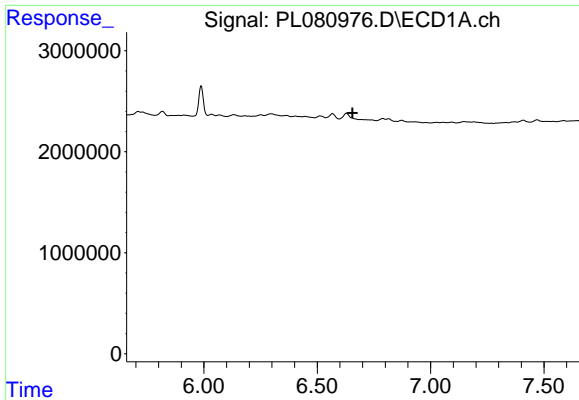
#26 Chlordane-4

R.T.: 5.817 min
 Delta R.T.: 0.003 min
 Response: 639238
 Conc: 1.48 ng/ml



#26 Chlordane-4

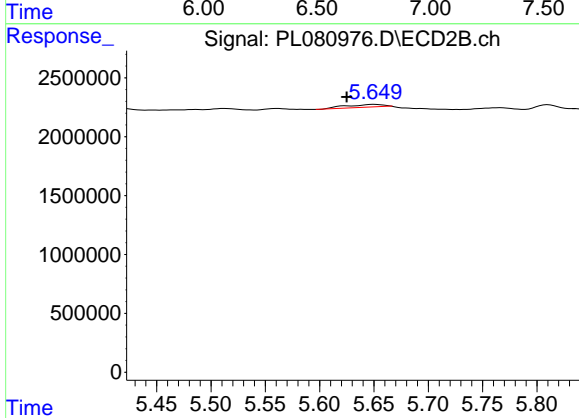
R.T.: 4.957 min
 Delta R.T.: 0.000 min
 Response: 358523
 Conc: 1.33 ng/ml



#27 Chlordane-5

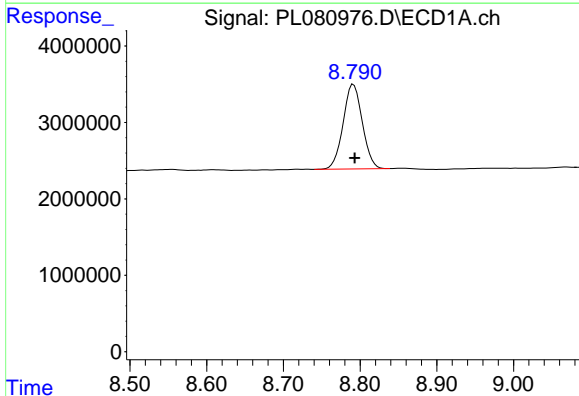
R.T.: 0.000 min
 Exp R.T.: 6.656 min
 Response: 0
 Conc: N.D.

Instrument :
 ECD_P
 ClientSampleId :



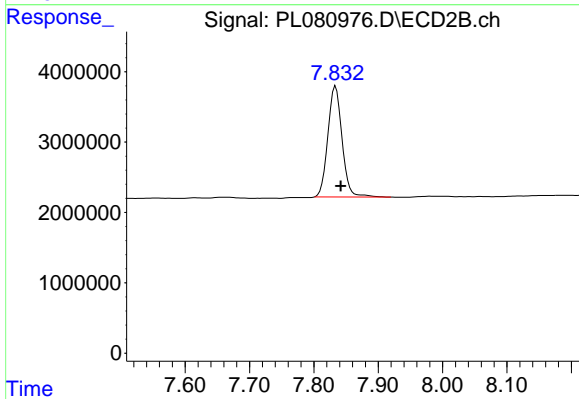
#27 Chlordane-5

R.T.: 5.650 min
 Delta R.T.: 0.025 min
 Response: 566058
 Conc: 7.96 ng/ml



#28 Decachlorobiphenyl

R.T.: 8.791 min
 Delta R.T.: -0.002 min
 Response: 19373230
 Conc: 11.07 ng/ml



#28 Decachlorobiphenyl

R.T.: 7.834 min
 Delta R.T.: -0.008 min
 Response: 24248940
 Conc: 10.18 ng/ml