

Data Path : Z:\pestpcbsrv\HPCHEM1\ECD_0\Data\P0021623\
 Data File : P0092472.D
 Signal(s) : Signal #1: ECD1A.ch Signal #2: ECD2B.ch
 Acq On : 16 Feb 2023 09:19
 Operator : YP/AJ
 Sample : AR1660CCC500
 Misc :
 ALS Vial : 3 Sample Multiplier: 1

Instrument :
 ECD_P
 ClientSampleId :

Integration File signal 1: autoint1.e
 Integration File signal 2: autoint2.e
 Quant Time: Feb 16 20:23:11 2023
 Quant Method : Z:\pestpcbsrv\HPCHEM1\ECD_0\methods\P0012323.M
 Quant Title : GC EXTRACTABLES
 QLast Update : Tue Jan 24 04:40:59 2023
 Response via : Initial Calibration
 Integrator: ChemStation

Volume Inj. : 2 µl
 Signal #1 Phase : ZB-MR1 Signal #2 Phase: ZB-MR2
 Signal #1 Info : 30Mx0.32mmx 0.50µ Signal #2 Info : 30M x 0.32mm x 0.25µm

Compound	RT#1	RT#2	Resp#1	Resp#2	ng/ml	ng/ml
System Monitoring Compounds						
1) SA Tetrachlo...	4.449	3.643	150.7E6	62906896	52.073	44.801
2) SA Decachlor...	10.377	8.681	115.9E6	54453450	56.141	48.236
Target Compounds						
3) L1 AR-1016-1	5.637	4.730	47496473	19984131	519.329	434.809
4) L1 AR-1016-2	5.659	4.748	68940400	28539406	514.827	435.199
5) L1 AR-1016-3	5.722	4.925	44340858	15731613	515.265	444.963
6) L1 AR-1016-4	5.821	4.967	34648882	13890635	519.740	446.543
7) L1 AR-1016-5	6.123	5.181	37657086	18221409	524.105	458.215
8) L2 AR-1221-1	4.655	3.856	5719467	2282928	151.289	120.595
9) L2 AR-1221-2	4.748	3.942	7916971	3316569	286.075	235.988
10) L2 AR-1221-3	4.824	4.018	29273848	12647713	346.913	302.033
11) L3 AR-1232-1	4.824	4.018	29273848	12647713	423.064	359.568
12) L3 AR-1232-2	5.363	4.748	41298711	28539406	1182.030	930.986
13) L3 AR-1232-3	5.659	4.925	68940400	15731613	1126.067	977.143
14) L3 AR-1232-4	5.821	5.008	34648882	17038027	1156.092	1043.138
15) L3 AR-1232-5	5.916	5.181	31217880	18221409	1263.139	1018.709
16) L4 AR-1242-1	5.637	4.730	47496473	19984131	609.017	512.376
17) L4 AR-1242-2	5.659	4.748	68940400	28539406	612.453	525.478
18) L4 AR-1242-3	5.722	4.925	44340858	15731613	610.816	540.157
19) L4 AR-1242-4	5.821	5.008	34648882	17038027	625.719	529.691
20) L4 AR-1242-5	6.575	5.534	9451590	17874109	169.317	493.736 #
21) L5 AR-1248-1	5.637	4.730	47496473	19984131	818.278	685.975
22) L5 AR-1248-2	5.916	4.967	31217880	13890635	341.613	307.879
23) L5 AR-1248-3	6.123	5.008	37657086	17038027	383.967	365.312
24) L5 AR-1248-4	6.534	5.181	10947464	18221409	111.813	339.129 #
25) L5 AR-1248-5	6.575	5.574	9451590	4655562	100.250	98.339
26) L6 AR-1254-1	6.508	5.534	31787974	17874109	287.114	228.016
27) L6 AR-1254-2	6.733	5.682	28522866	14060489	175.466	203.213
28) L6 AR-1254-3	7.106	6.103	12969062	23632322	78.634	221.411 #
29) L6 AR-1254-4	7.398	6.317	8751443	1624920	80.006	27.590 #
30) L6 AR-1254-5	7.827	6.737	97700431	40587669	694.393	445.942 #
31) L7 AR-1260-1	7.275	6.219	72616645	34037285	551.146	450.589
32) L7 AR-1260-2	7.540	6.407	78333890	39080698	528.260	446.056
33) L7 AR-1260-3	7.908	6.562	62254193	36515644	549.640	421.225
34) L7 AR-1260-4	8.138	7.037	67914341	30549210	547.851	456.179
35) L7 AR-1260-5	8.473	7.280	120.3E6	66146386	541.843	464.837
36) L8 AR-1262-1	7.827	6.737	97700431	40587669	904.214	874.549
37) L8 AR-1262-2	8.473	7.280	120.3E6	66146386	504.026	448.334
38) L8 AR-1262-3	8.809	7.566	79770638	15145690	471.888	242.343 #
39) L8 AR-1262-4	8.889	7.629	52219162	48303562	513.283	440.884
40) L8 AR-1262-5	9.583	8.128	35622535	17737748	398.329	344.247
41) L9 AR-1268-1	8.809	7.566	79770638	15145690	252.166	83.236 #

Data Path : Z:\pestpcbsrv\HPCHEM1\ECD_0\Data\P0021623\
 Data File : P0092472.D
 Signal(s) : Signal #1: ECD1A.ch Signal #2: ECD2B.ch
 Acq On : 16 Feb 2023 09:19
 Operator : YP/AJ
 Sample : AR1660CCC500
 Misc :
 ALS Vial : 3 Sample Multiplier: 1

Instrument :
 ECD_P
 ClientSampleId :

Integration File signal 1: autoint1.e
 Integration File signal 2: autoint2.e
 Quant Time: Feb 16 20:23:11 2023
 Quant Method : Z:\pestpcbsrv\HPCHEM1\ECD_0\methods\P0012323.M
 Quant Title : GC EXTRACTABLES
 QLast Update : Tue Jan 24 04:40:59 2023
 Response via : Initial Calibration
 Integrator: ChemStation

Volume Inj. : 2 µl
 Signal #1 Phase : ZB-MR1 Signal #2 Phase: ZB-MR2
 Signal #1 Info : 30Mx0.32mmx 0.50µ Signal #2 Info : 30M x 0.32mm x 0.25µm

	Compound	RT#1	RT#2	Resp#1	Resp#2	ng/ml	ng/ml
42)	L9 AR-1268-2	8.889	7.629	52219162	48303562	173.002	291.889 #
43)	L9 AR-1268-3	9.134	7.838	1776161	928711	7.017	6.254
44)	L9 AR-1268-4	9.583	8.128	35622535	17737748	340.818	282.572
45)	L9 AR-1268-5	10.021	8.422	10086519	5351077	12.745	12.643

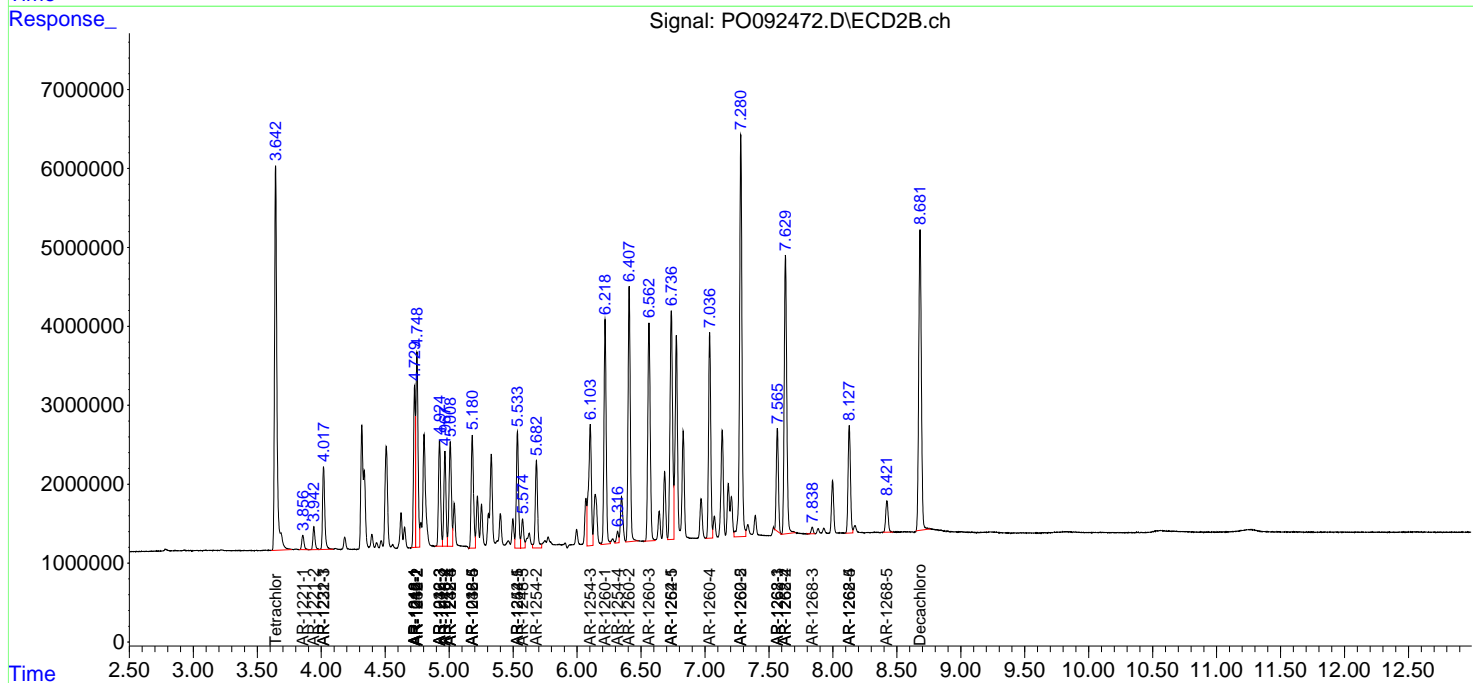
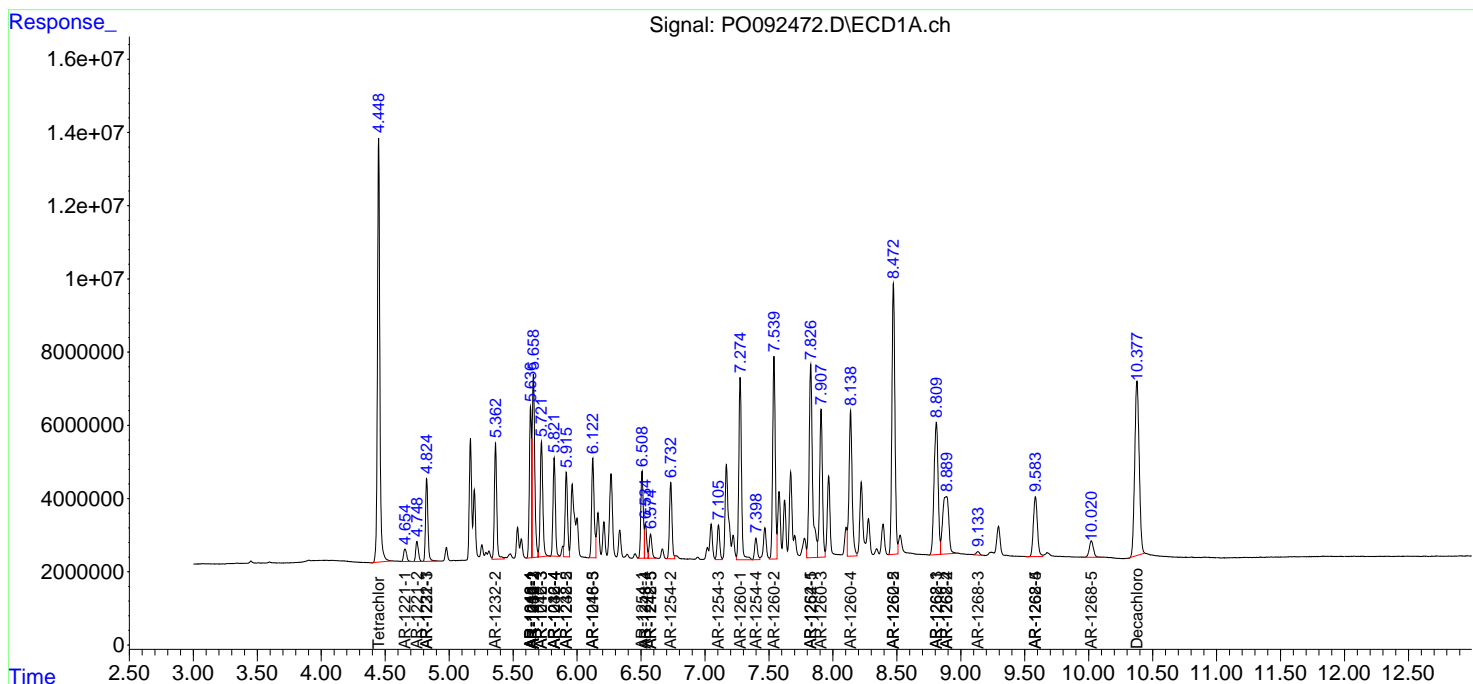
(f)=RT Delta > 1/2 Window (#)=Amounts differ by > 25% (m)=manual int.

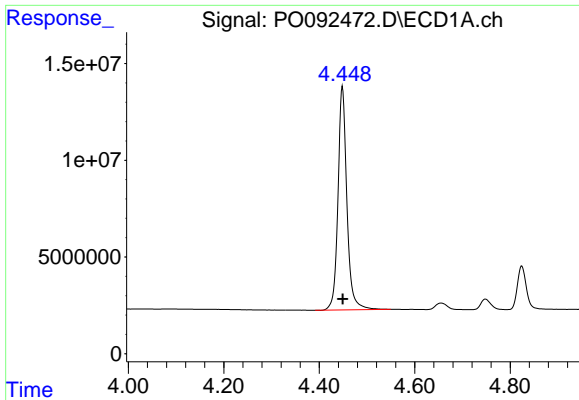
Data Path : Z:\pestpcbsrv\HPCHEM1\ECD_O\Data\PO021623\
 Data File : PO092472.D
 Signal(s) : Signal #1: ECD1A.ch Signal #2: ECD2B.ch
 Acq On : 16 Feb 2023 09:19
 Operator : YP/AJ
 Sample : AR1660CCC500
 Misc :
 ALS Vial : 3 Sample Multiplier: 1

Instrument :
 ECD_P
 ClientSampleId :

Integration File signal 1: autoint1.e
 Integration File signal 2: autoint2.e
 Quant Time: Feb 16 20:23:11 2023
 Quant Method : Z:\pestpcbsrv\HPCHEM1\ECD_O\methods\PO012323.M
 Quant Title : GC EXTRACTABLES
 QLast Update : Tue Jan 24 04:40:59 2023
 Response via : Initial Calibration
 Integrator: ChemStation

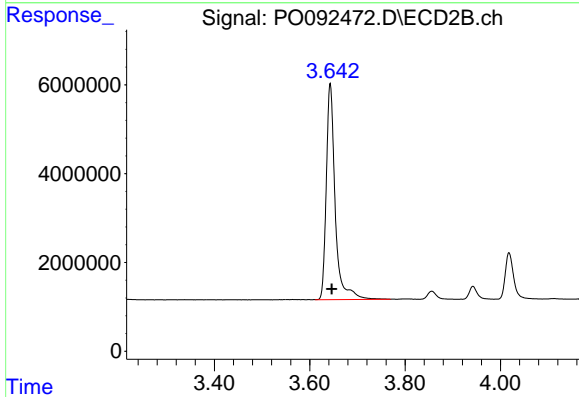
Volume Inj. : 2 µl
 Signal #1 Phase : ZB-MR1 Signal #2 Phase: ZB-MR2
 Signal #1 Info : 30Mx0.32mmx 0.50µ Signal #2 Info : 30M x 0.32mm x 0.25µm



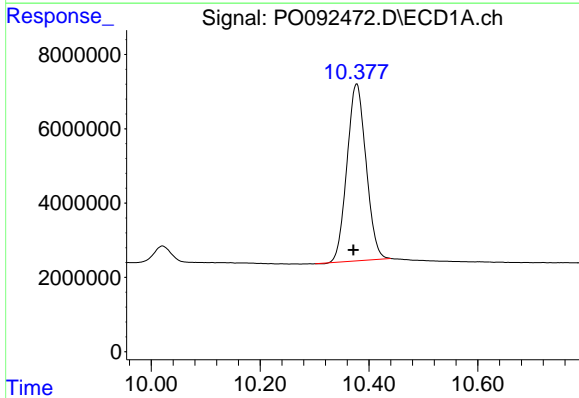


#1 Tetrachloro-m-xylene
 R.T.: 4.449 min
 Delta R.T.: 0.000 min
 Response: 150745250
 Conc: 52.07 ng/ml

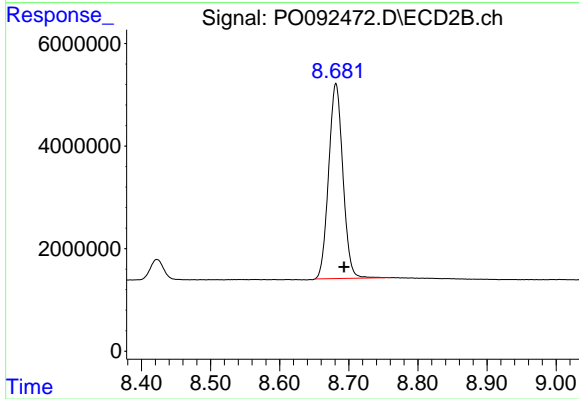
Instrument :
 ECD_P
 ClientSampleId :



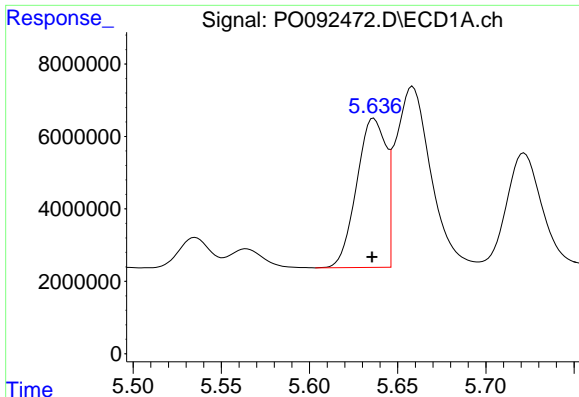
#1 Tetrachloro-m-xylene
 R.T.: 3.643 min
 Delta R.T.: -0.003 min
 Response: 62906896
 Conc: 44.80 ng/ml



#2 Decachlorobiphenyl
 R.T.: 10.377 min
 Delta R.T.: 0.006 min
 Response: 115872266
 Conc: 56.14 ng/ml



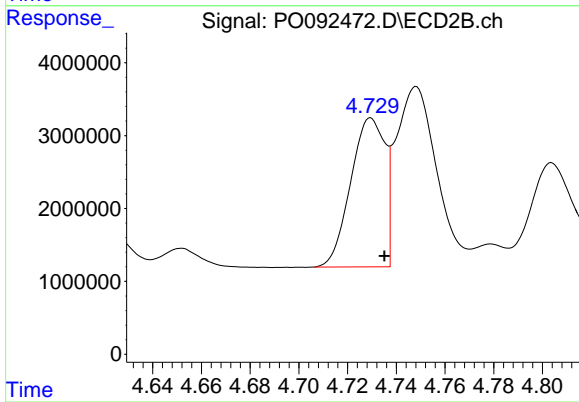
#2 Decachlorobiphenyl
 R.T.: 8.681 min
 Delta R.T.: -0.012 min
 Response: 54453450
 Conc: 48.24 ng/ml



#3 AR-1016-1

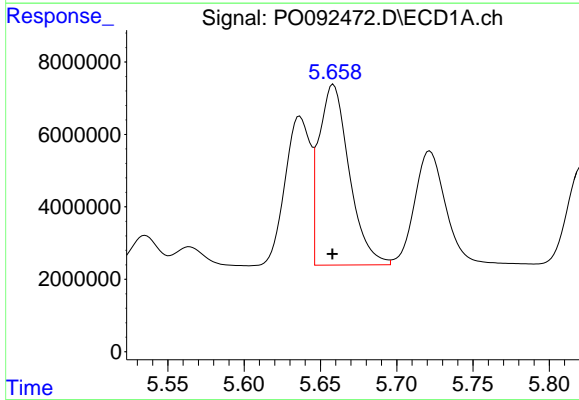
R.T.: 5.637 min
 Delta R.T.: 0.001 min
 Response: 47496473
 Conc: 519.33 ng/ml

Instrument :
 ECD_P
 ClientSampleId :



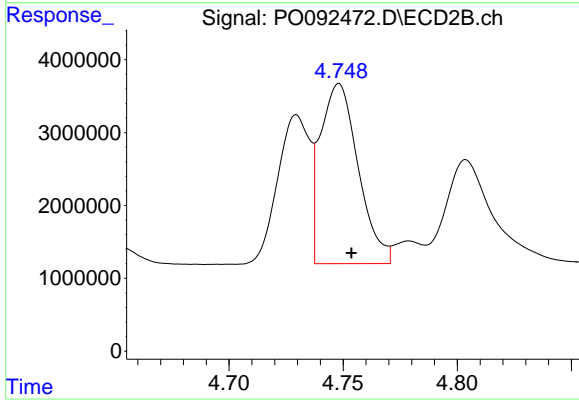
#3 AR-1016-1

R.T.: 4.730 min
 Delta R.T.: -0.006 min
 Response: 19984131
 Conc: 434.81 ng/ml



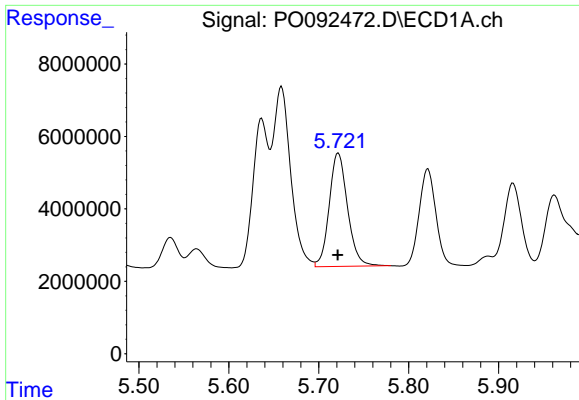
#4 AR-1016-2

R.T.: 5.659 min
 Delta R.T.: 0.000 min
 Response: 68940400
 Conc: 514.83 ng/ml



#4 AR-1016-2

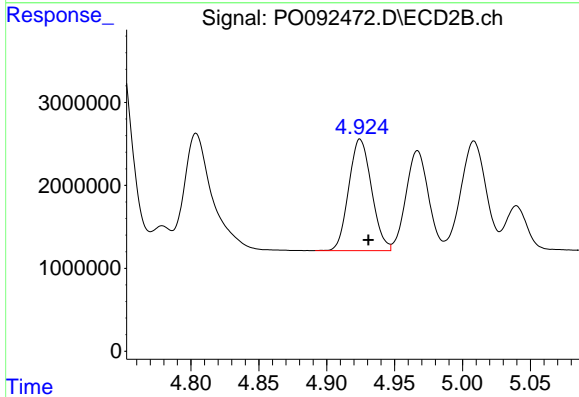
R.T.: 4.748 min
 Delta R.T.: -0.006 min
 Response: 28539406
 Conc: 435.20 ng/ml



#5 AR-1016-3

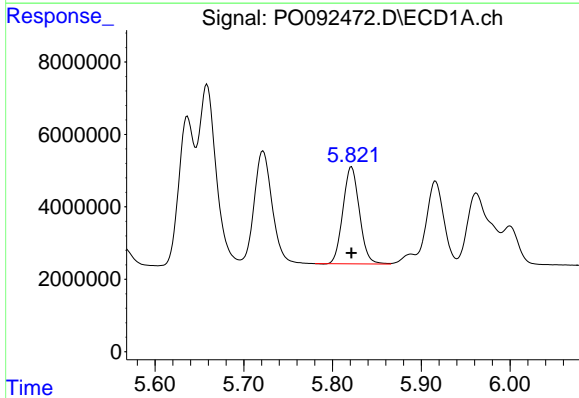
R.T.: 5.722 min
 Delta R.T.: 0.000 min
 Response: 44340858
 Conc: 515.27 ng/ml

Instrument :
 ECD_P
 ClientSampleId :



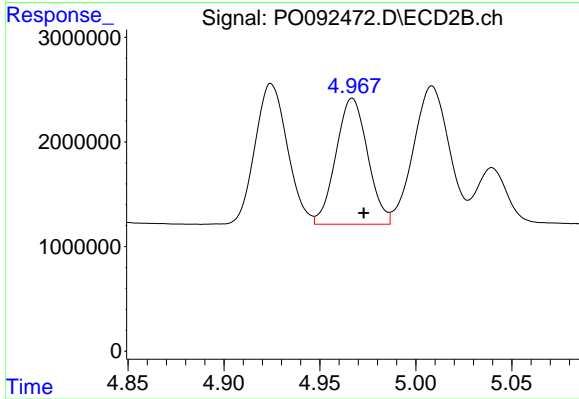
#5 AR-1016-3

R.T.: 4.925 min
 Delta R.T.: -0.006 min
 Response: 15731613
 Conc: 444.96 ng/ml



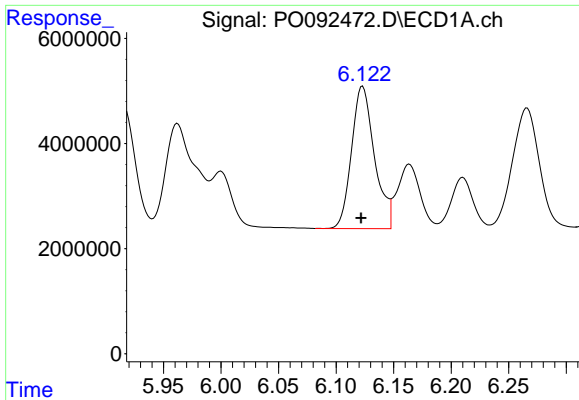
#6 AR-1016-4

R.T.: 5.821 min
 Delta R.T.: 0.000 min
 Response: 34648882
 Conc: 519.74 ng/ml



#6 AR-1016-4

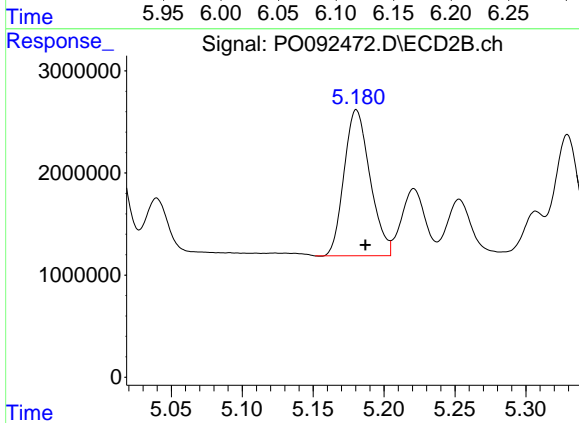
R.T.: 4.967 min
 Delta R.T.: -0.006 min
 Response: 13890635
 Conc: 446.54 ng/ml



#7 AR-1016-5

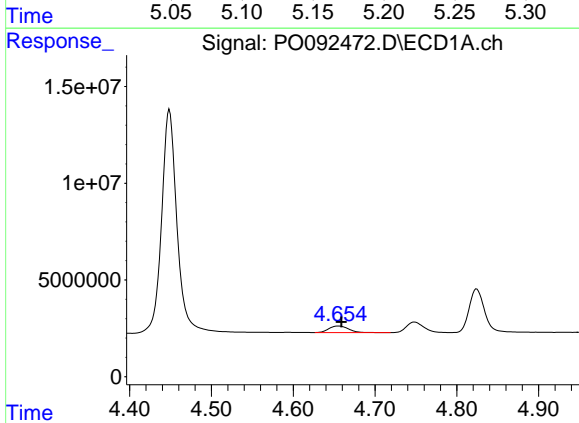
R.T.: 6.123 min
 Delta R.T.: 0.001 min
 Response: 37657086
 Conc: 524.10 ng/ml

Instrument :
 ECD_P
 ClientSampleId :



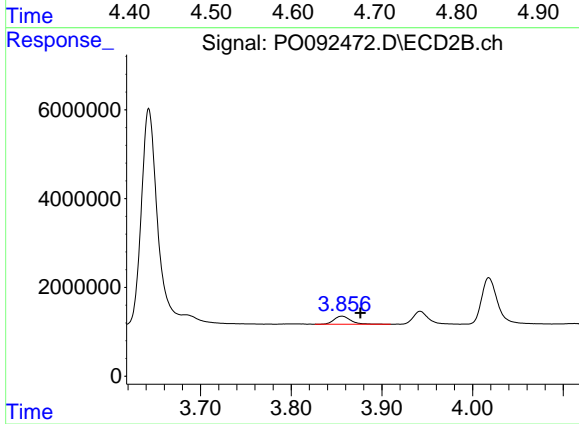
#7 AR-1016-5

R.T.: 5.181 min
 Delta R.T.: -0.006 min
 Response: 18221409
 Conc: 458.22 ng/ml



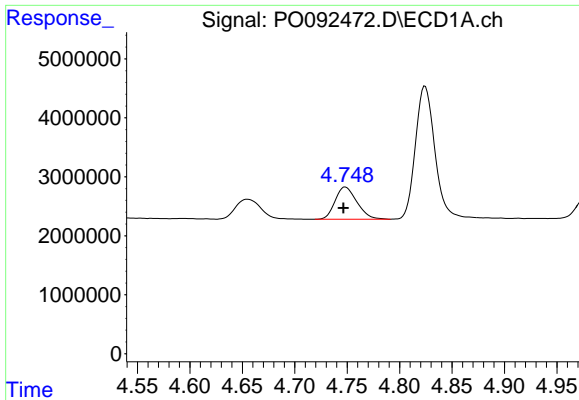
#8 AR-1221-1

R.T.: 4.655 min
 Delta R.T.: -0.004 min
 Response: 5719467
 Conc: 151.29 ng/ml



#8 AR-1221-1

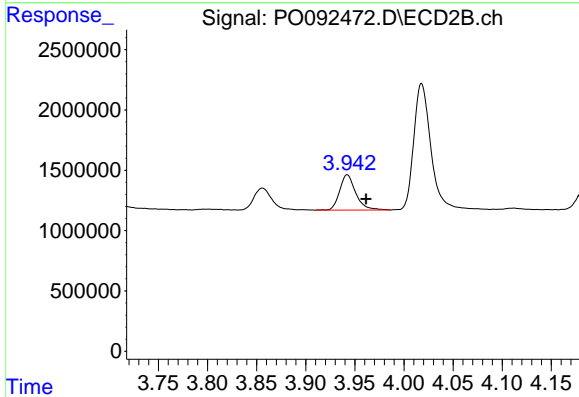
R.T.: 3.856 min
 Delta R.T.: -0.021 min
 Response: 2282928
 Conc: 120.59 ng/ml



#9 AR-1221-2

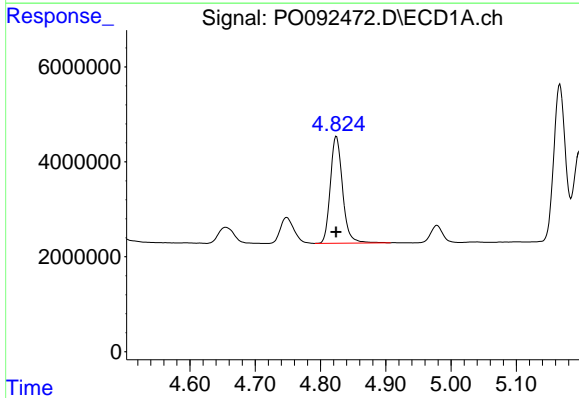
R.T.: 4.748 min
 Delta R.T.: 0.002 min
 Response: 7916971
 Conc: 286.07 ng/ml

Instrument :
 ECD_P
 ClientSampleId :



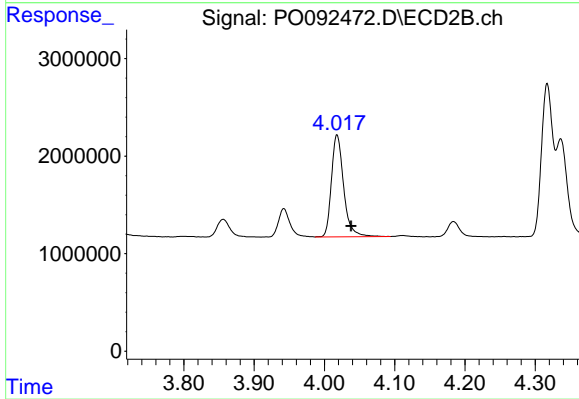
#9 AR-1221-2

R.T.: 3.942 min
 Delta R.T.: -0.019 min
 Response: 3316569
 Conc: 235.99 ng/ml



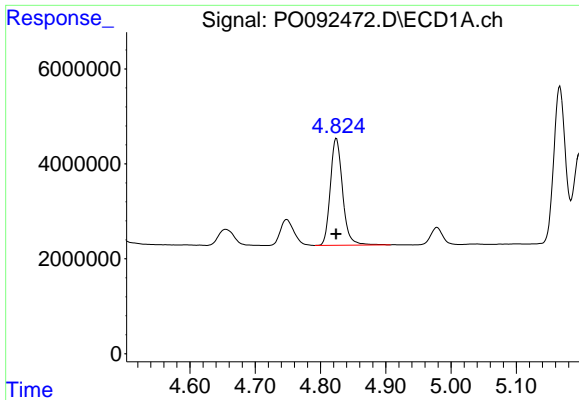
#10 AR-1221-3

R.T.: 4.824 min
 Delta R.T.: 0.000 min
 Response: 29273848
 Conc: 346.91 ng/ml



#10 AR-1221-3

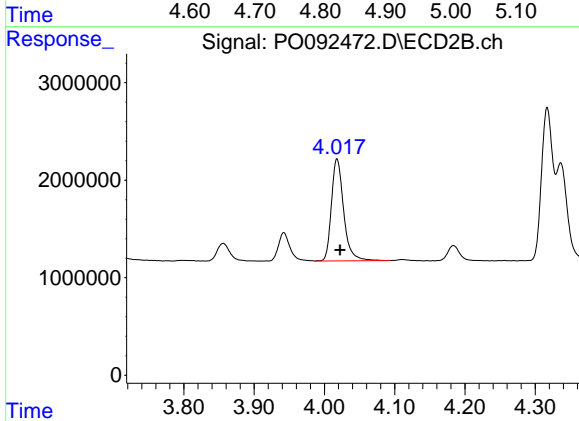
R.T.: 4.018 min
 Delta R.T.: -0.020 min
 Response: 12647713
 Conc: 302.03 ng/ml



#11 AR-1232-1

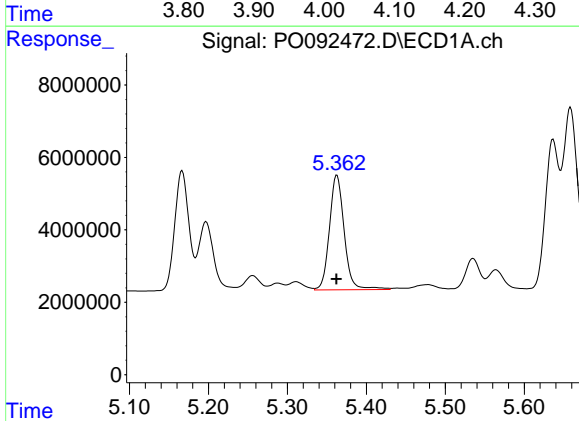
R.T.: 4.824 min
 Delta R.T.: 0.000 min
 Response: 29273848
 Conc: 423.06 ng/ml

Instrument :
 ECD_P
 ClientSampleId :



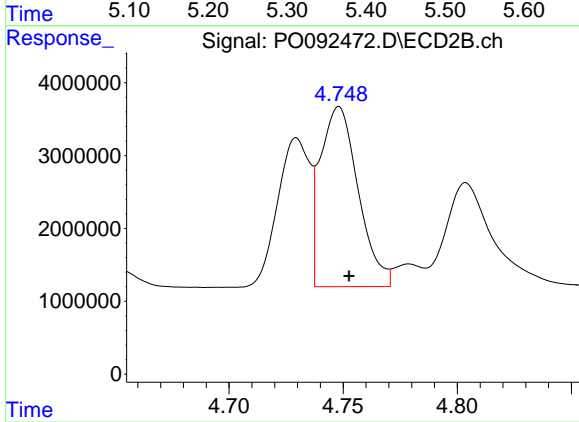
#11 AR-1232-1

R.T.: 4.018 min
 Delta R.T.: -0.004 min
 Response: 12647713
 Conc: 359.57 ng/ml



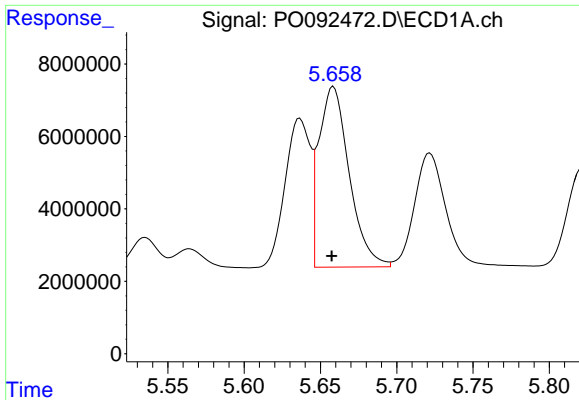
#12 AR-1232-2

R.T.: 5.363 min
 Delta R.T.: 0.000 min
 Response: 41298711
 Conc: 1182.03 ng/ml



#12 AR-1232-2

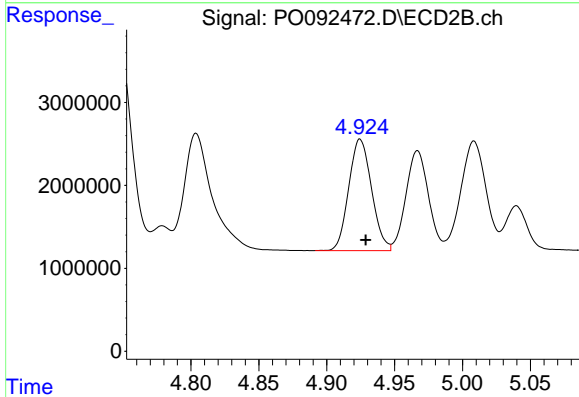
R.T.: 4.748 min
 Delta R.T.: -0.005 min
 Response: 28539406
 Conc: 930.99 ng/ml



#13 AR-1232-3

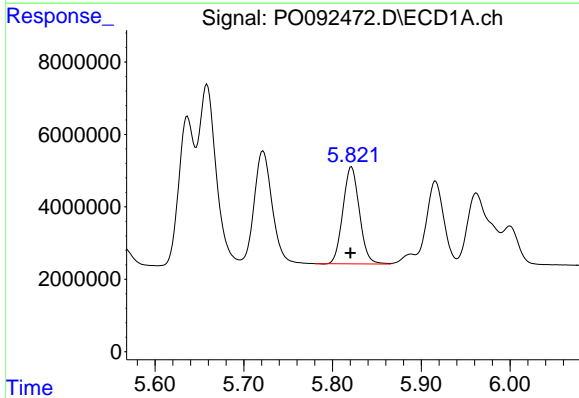
R.T.: 5.659 min
 Delta R.T.: 0.001 min
 Response: 68940400
 Conc: 1126.07 ng/ml

Instrument :
 ECD_P
 ClientSampleId :



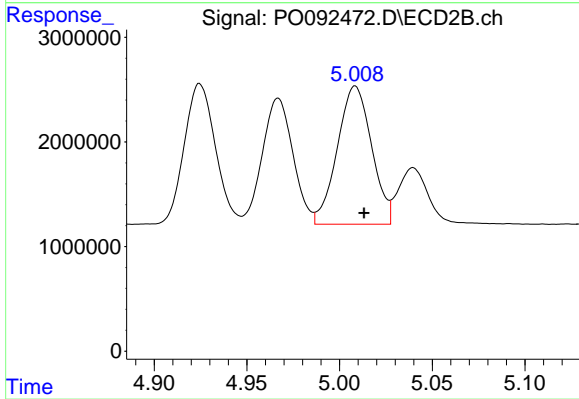
#13 AR-1232-3

R.T.: 4.925 min
 Delta R.T.: -0.004 min
 Response: 15731613
 Conc: 977.14 ng/ml



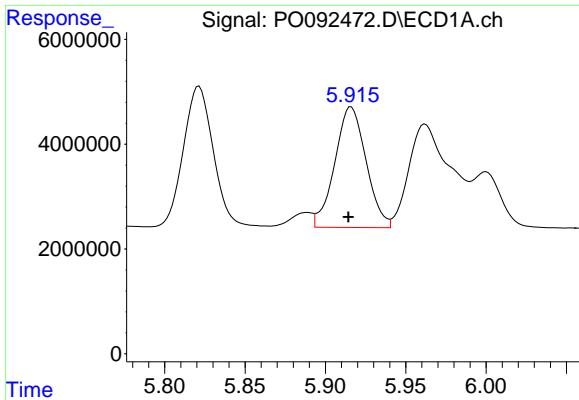
#14 AR-1232-4

R.T.: 5.821 min
 Delta R.T.: 0.001 min
 Response: 34648882
 Conc: 1156.09 ng/ml



#14 AR-1232-4

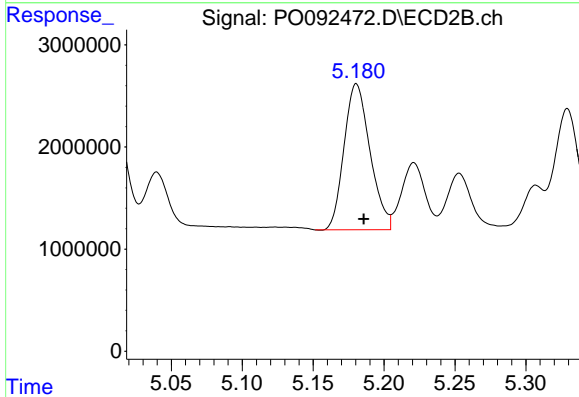
R.T.: 5.008 min
 Delta R.T.: -0.005 min
 Response: 17038027
 Conc: 1043.14 ng/ml



#15 AR-1232-5

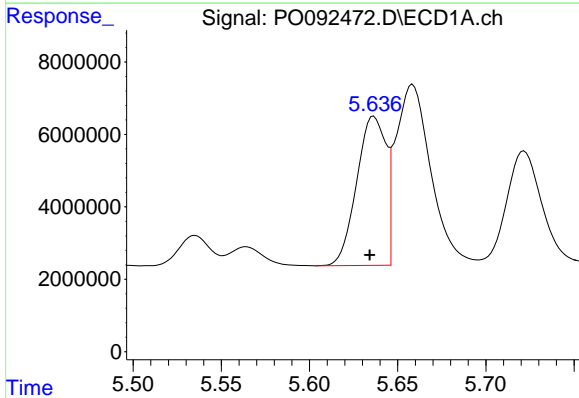
R.T.: 5.916 min
 Delta R.T.: 0.002 min
 Response: 31217880
 Conc: 1263.14 ng/ml

Instrument :
 ECD_P
 ClientSampleId :



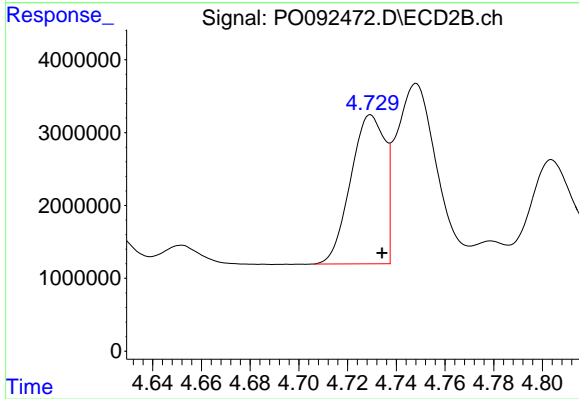
#15 AR-1232-5

R.T.: 5.181 min
 Delta R.T.: -0.005 min
 Response: 18221409
 Conc: 1018.71 ng/ml



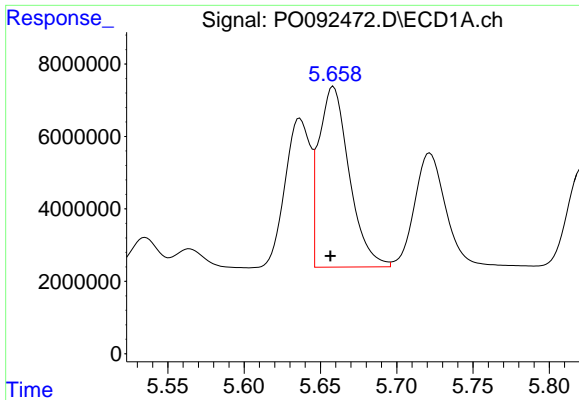
#16 AR-1242-1

R.T.: 5.637 min
 Delta R.T.: 0.002 min
 Response: 47496473
 Conc: 609.02 ng/ml



#16 AR-1242-1

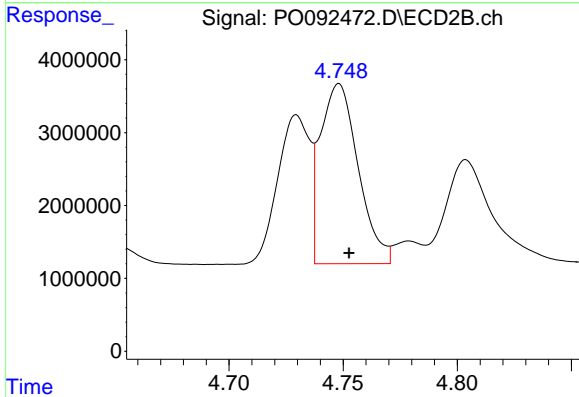
R.T.: 4.730 min
 Delta R.T.: -0.005 min
 Response: 19984131
 Conc: 512.38 ng/ml



#17 AR-1242-2

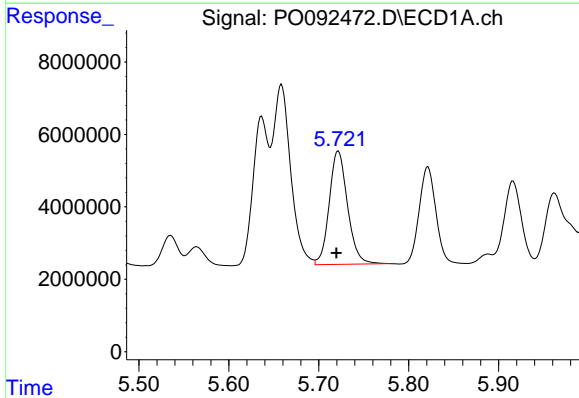
R.T.: 5.659 min
 Delta R.T.: 0.002 min
 Response: 68940400
 Conc: 612.45 ng/ml

Instrument :
 ECD_P
 ClientSampleId :



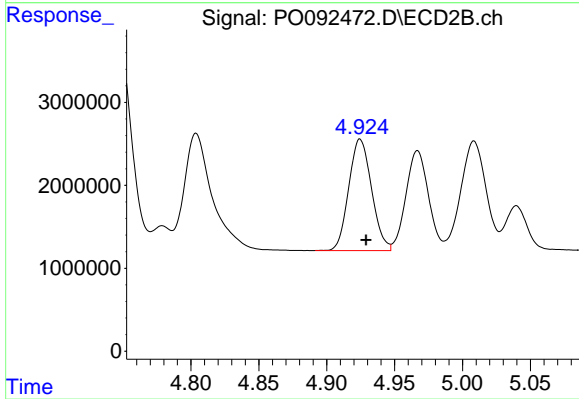
#17 AR-1242-2

R.T.: 4.748 min
 Delta R.T.: -0.004 min
 Response: 28539406
 Conc: 525.48 ng/ml



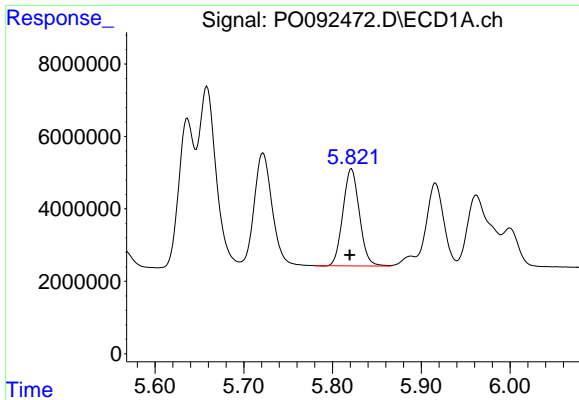
#18 AR-1242-3

R.T.: 5.722 min
 Delta R.T.: 0.002 min
 Response: 44340858
 Conc: 610.82 ng/ml



#18 AR-1242-3

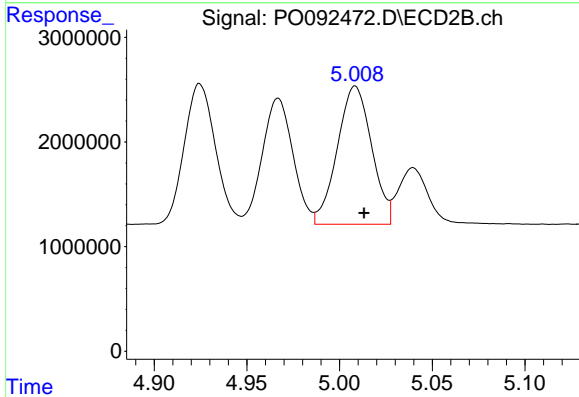
R.T.: 4.925 min
 Delta R.T.: -0.004 min
 Response: 15731613
 Conc: 540.16 ng/ml



#19 AR-1242-4

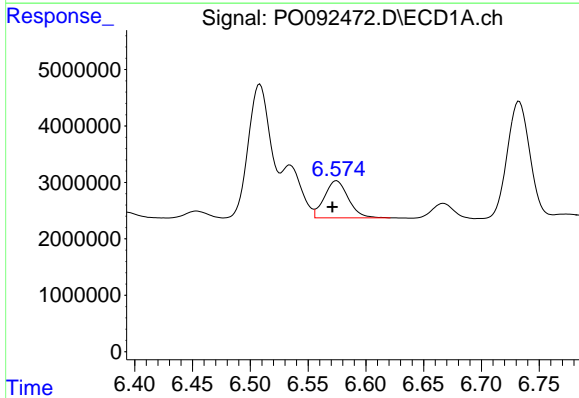
R.T.: 5.821 min
 Delta R.T.: 0.002 min
 Response: 34648882
 Conc: 625.72 ng/ml

Instrument :
 ECD_P
 ClientSampleId :



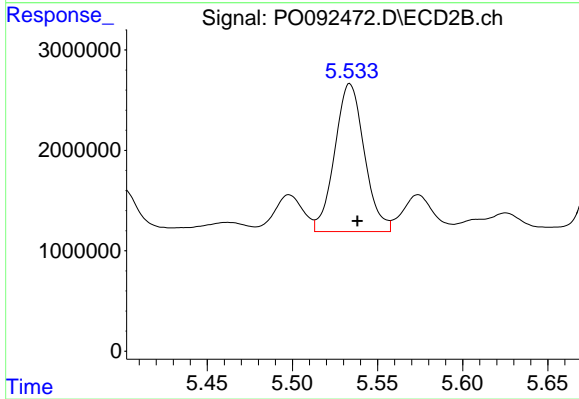
#19 AR-1242-4

R.T.: 5.008 min
 Delta R.T.: -0.005 min
 Response: 17038027
 Conc: 529.69 ng/ml



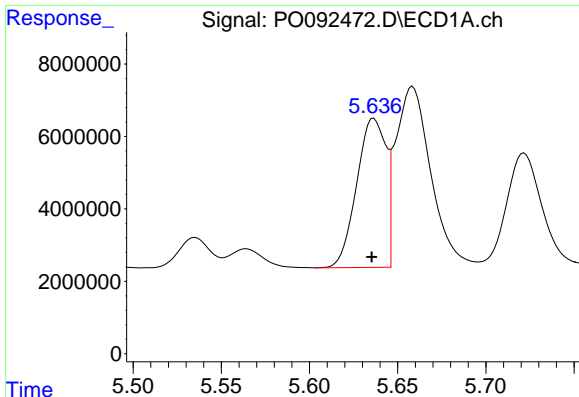
#20 AR-1242-5

R.T.: 6.575 min
 Delta R.T.: 0.004 min
 Response: 9451590
 Conc: 169.32 ng/ml



#20 AR-1242-5

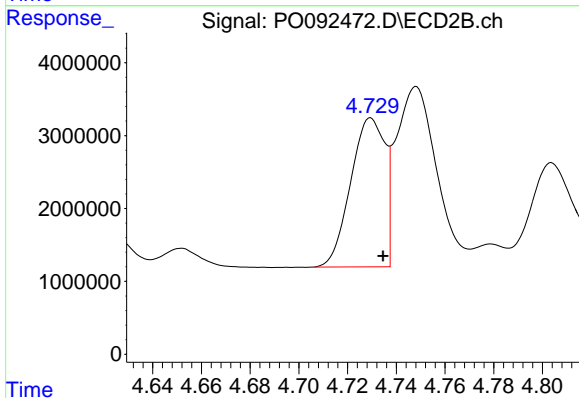
R.T.: 5.534 min
 Delta R.T.: -0.004 min
 Response: 17874109
 Conc: 493.74 ng/ml



#21 AR-1248-1

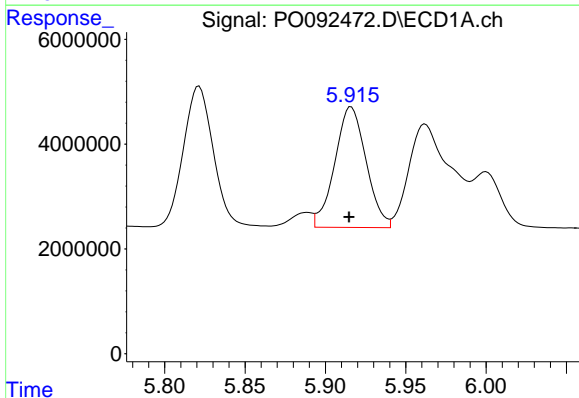
R.T.: 5.637 min
 Delta R.T.: 0.001 min
 Response: 47496473
 Conc: 818.28 ng/ml

Instrument :
 ECD_P
 ClientSampleId :



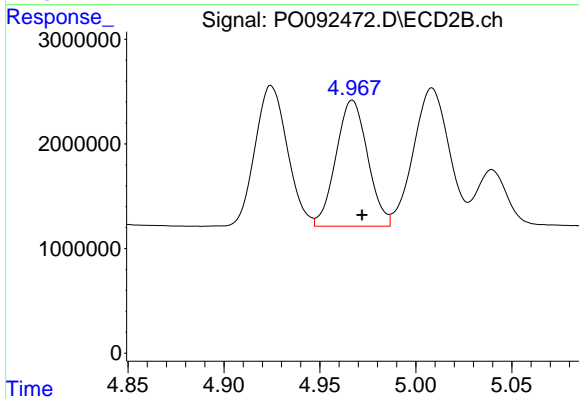
#21 AR-1248-1

R.T.: 4.730 min
 Delta R.T.: -0.005 min
 Response: 19984131
 Conc: 685.97 ng/ml



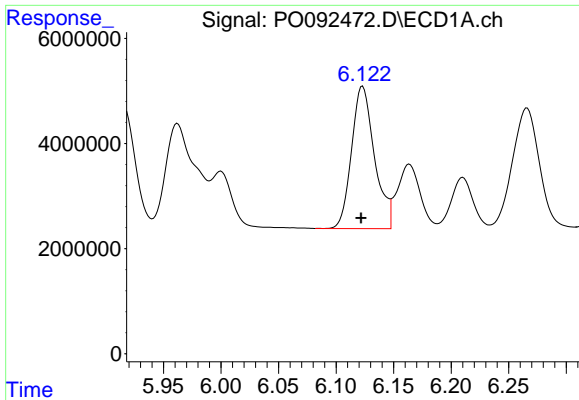
#22 AR-1248-2

R.T.: 5.916 min
 Delta R.T.: 0.001 min
 Response: 31217880
 Conc: 341.61 ng/ml



#22 AR-1248-2

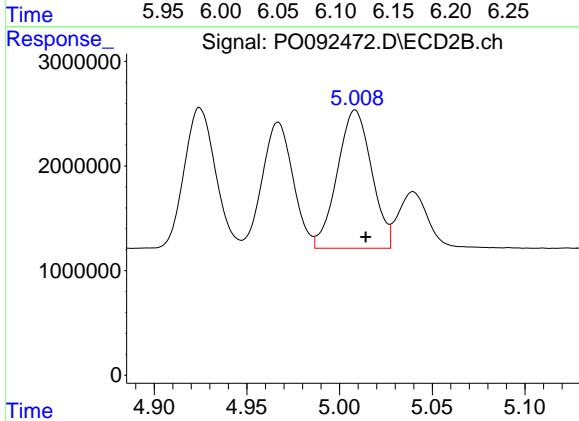
R.T.: 4.967 min
 Delta R.T.: -0.005 min
 Response: 13890635
 Conc: 307.88 ng/ml



#23 AR-1248-3

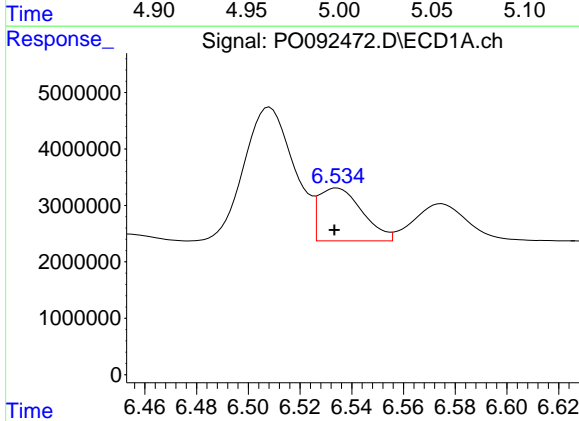
R.T.: 6.123 min
 Delta R.T.: 0.001 min
 Response: 37657086
 Conc: 383.97 ng/ml

Instrument :
 ECD_P
 ClientSampleId :



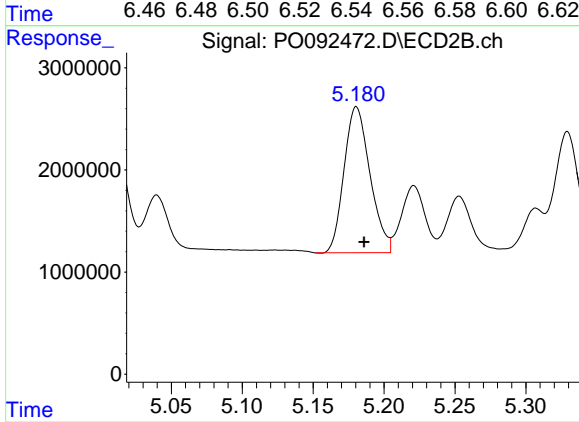
#23 AR-1248-3

R.T.: 5.008 min
 Delta R.T.: -0.006 min
 Response: 17038027
 Conc: 365.31 ng/ml



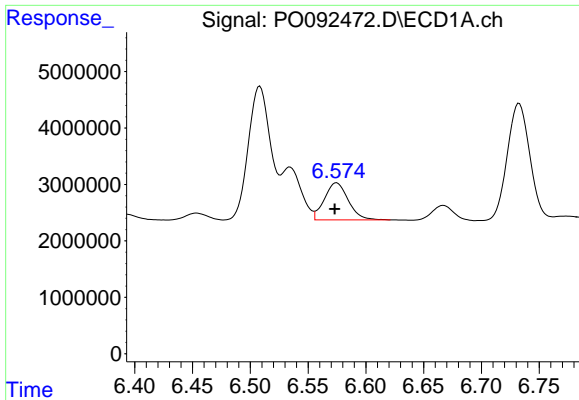
#24 AR-1248-4

R.T.: 6.534 min
 Delta R.T.: 0.001 min
 Response: 10947464
 Conc: 111.81 ng/ml



#24 AR-1248-4

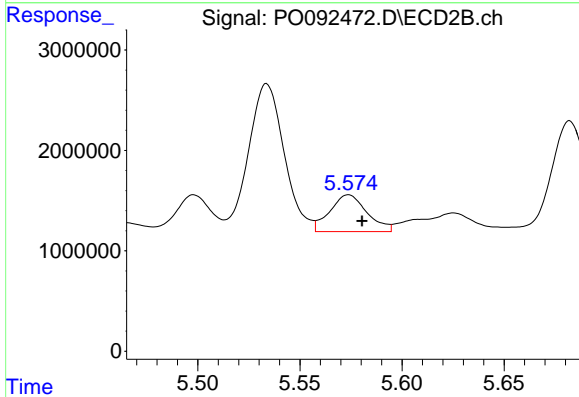
R.T.: 5.181 min
 Delta R.T.: -0.005 min
 Response: 18221409
 Conc: 339.13 ng/ml



#25 AR-1248-5

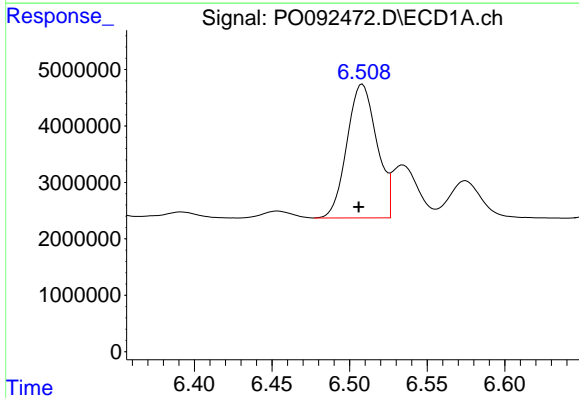
R.T.: 6.575 min
 Delta R.T.: 0.002 min
 Response: 9451590
 Conc: 100.25 ng/ml

Instrument :
 ECD_P
 ClientSampleId :



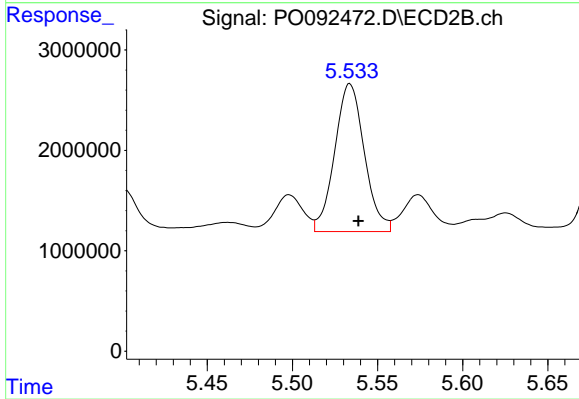
#25 AR-1248-5

R.T.: 5.574 min
 Delta R.T.: -0.007 min
 Response: 4655562
 Conc: 98.34 ng/ml



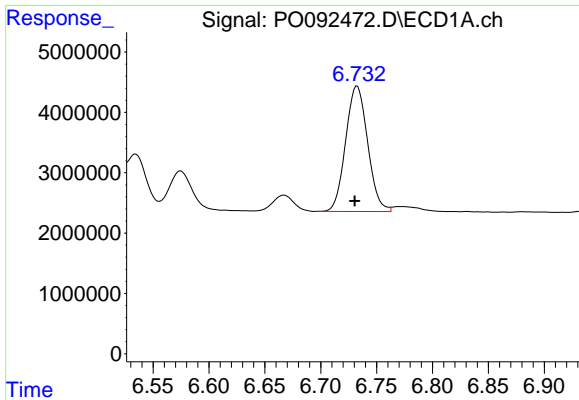
#26 AR-1254-1

R.T.: 6.508 min
 Delta R.T.: 0.002 min
 Response: 31787974
 Conc: 287.11 ng/ml



#26 AR-1254-1

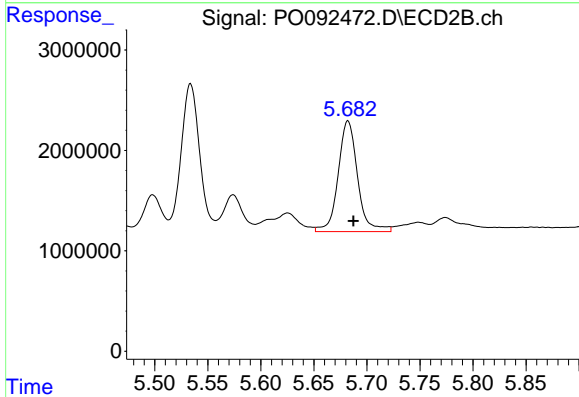
R.T.: 5.534 min
 Delta R.T.: -0.005 min
 Response: 17874109
 Conc: 228.02 ng/ml



#27 AR-1254-2

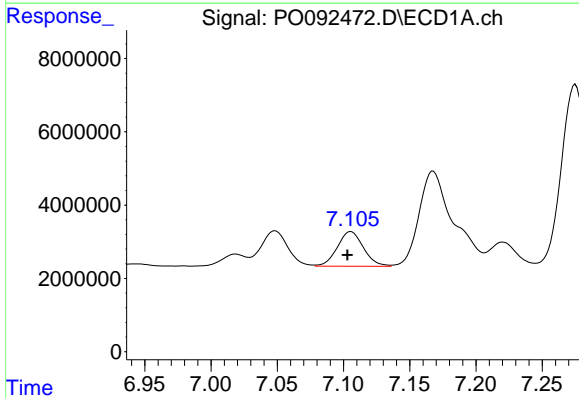
R.T.: 6.733 min
 Delta R.T.: 0.002 min
 Response: 28522866
 Conc: 175.47 ng/ml

Instrument :
 ECD_P
 ClientSampleId :



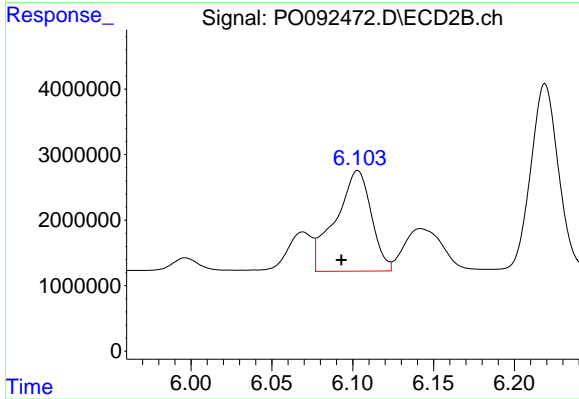
#27 AR-1254-2

R.T.: 5.682 min
 Delta R.T.: -0.005 min
 Response: 14060489
 Conc: 203.21 ng/ml



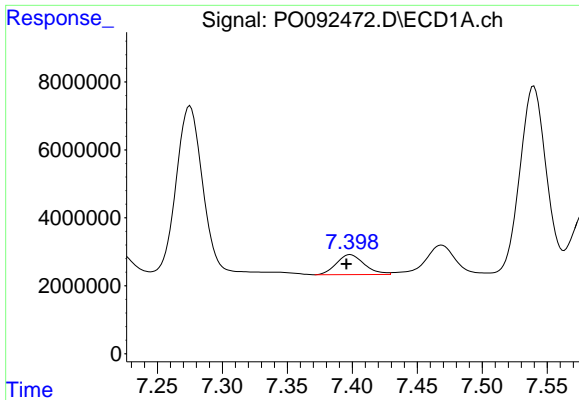
#28 AR-1254-3

R.T.: 7.106 min
 Delta R.T.: 0.003 min
 Response: 12969062
 Conc: 78.63 ng/ml



#28 AR-1254-3

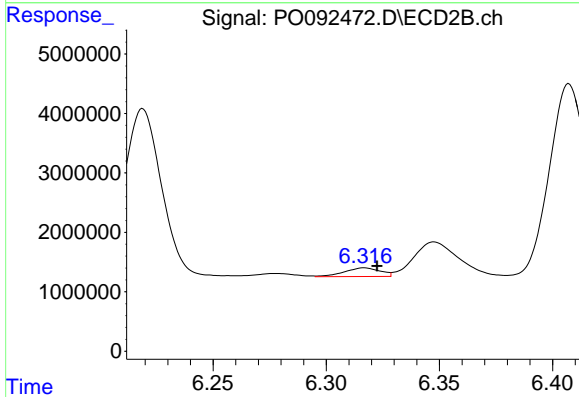
R.T.: 6.103 min
 Delta R.T.: 0.010 min
 Response: 23632322
 Conc: 221.41 ng/ml



#29 AR-1254-4

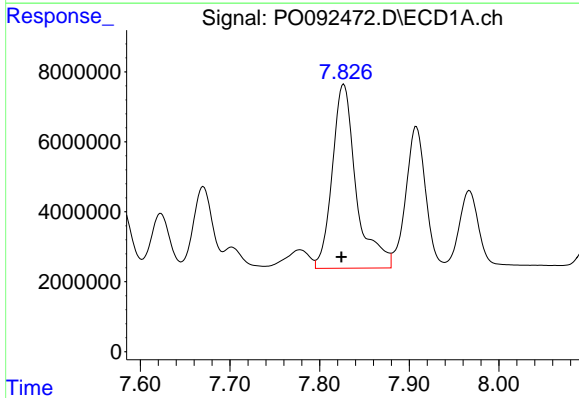
R.T.: 7.398 min
 Delta R.T.: 0.003 min
 Response: 8751443
 Conc: 80.01 ng/ml

Instrument :
 ECD_P
 ClientSampleId :



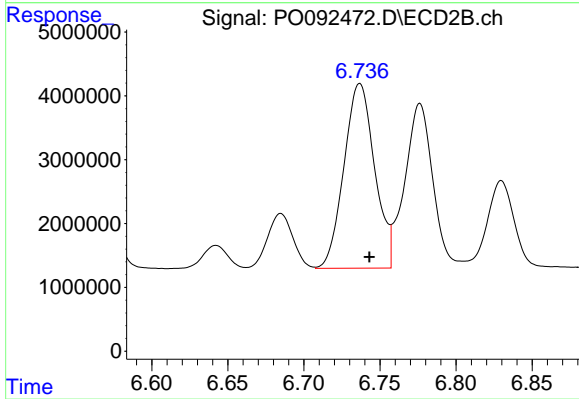
#29 AR-1254-4

R.T.: 6.317 min
 Delta R.T.: -0.006 min
 Response: 1624920
 Conc: 27.59 ng/ml



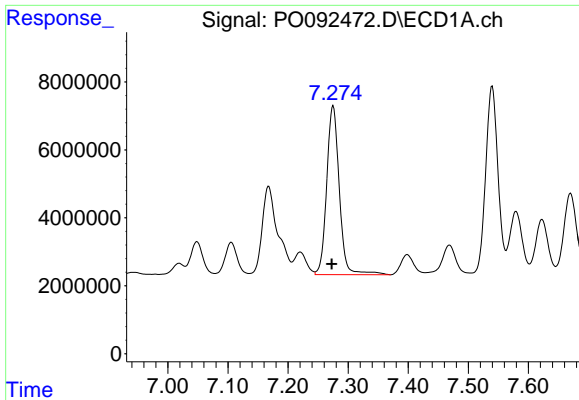
#30 AR-1254-5

R.T.: 7.827 min
 Delta R.T.: 0.003 min
 Response: 97700431
 Conc: 694.39 ng/ml



#30 AR-1254-5

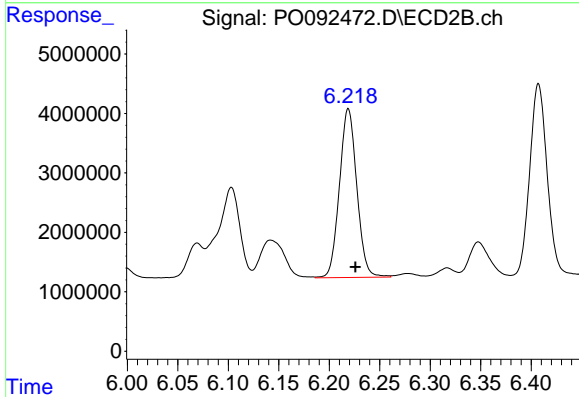
R.T.: 6.737 min
 Delta R.T.: -0.006 min
 Response: 40587669
 Conc: 445.94 ng/ml



#31 AR-1260-1

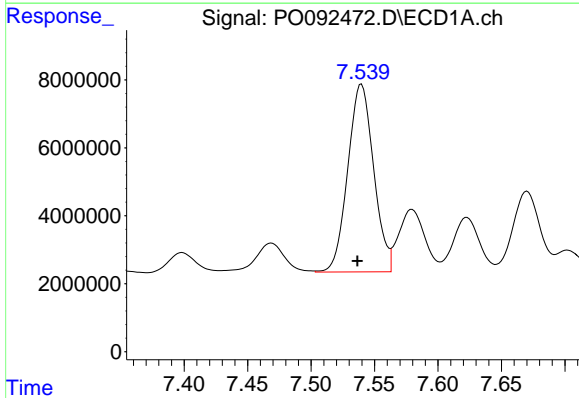
R.T.: 7.275 min
 Delta R.T.: 0.002 min
 Response: 72616645
 Conc: 551.15 ng/ml

Instrument :
 ECD_P
 ClientSampleId :



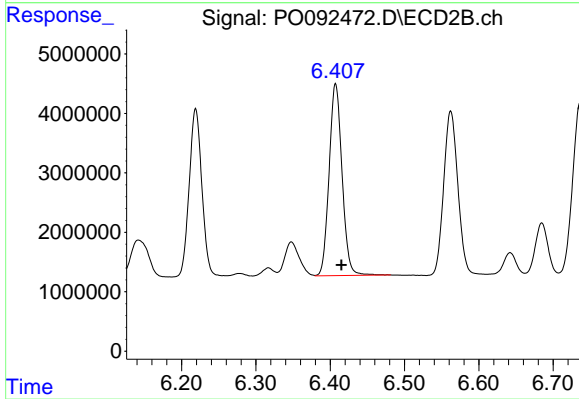
#31 AR-1260-1

R.T.: 6.219 min
 Delta R.T.: -0.007 min
 Response: 34037285
 Conc: 450.59 ng/ml



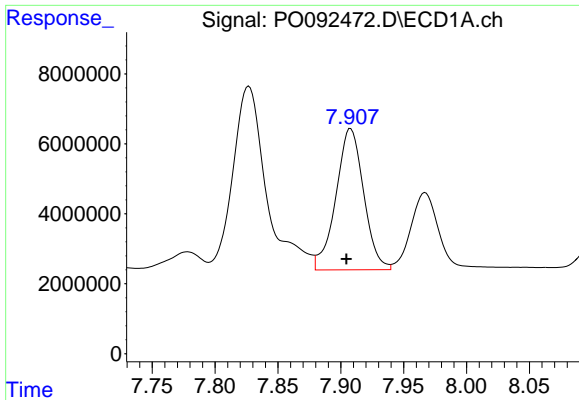
#32 AR-1260-2

R.T.: 7.540 min
 Delta R.T.: 0.003 min
 Response: 78333890
 Conc: 528.26 ng/ml



#32 AR-1260-2

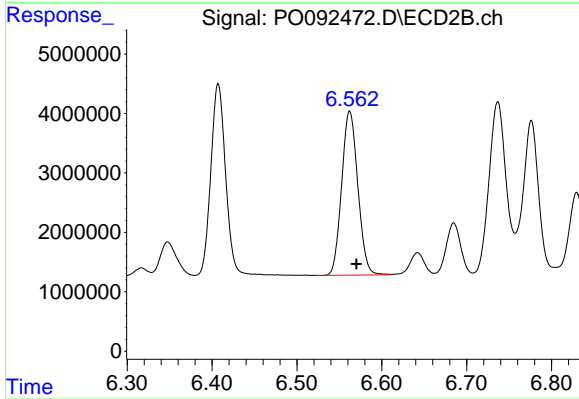
R.T.: 6.407 min
 Delta R.T.: -0.008 min
 Response: 39080698
 Conc: 446.06 ng/ml



#33 AR-1260-3

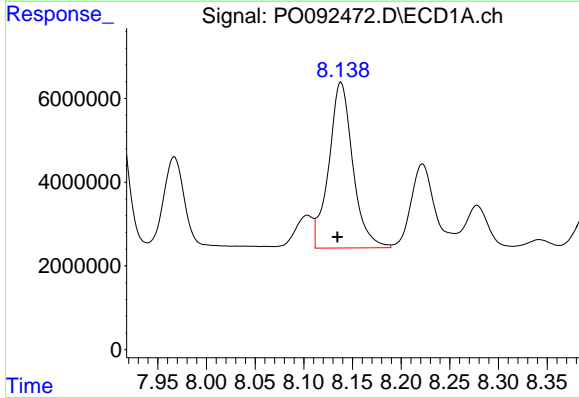
R.T.: 7.908 min
 Delta R.T.: 0.003 min
 Response: 62254193
 Conc: 549.64 ng/ml

Instrument :
 ECD_P
 ClientSampleId :



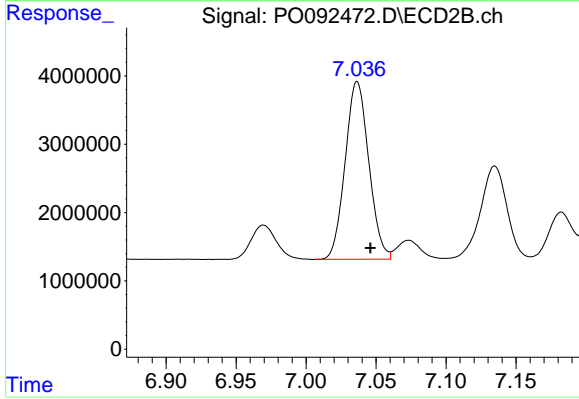
#33 AR-1260-3

R.T.: 6.562 min
 Delta R.T.: -0.008 min
 Response: 36515644
 Conc: 421.22 ng/ml



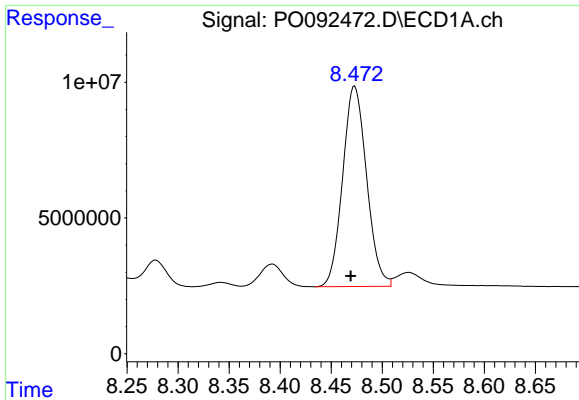
#34 AR-1260-4

R.T.: 8.138 min
 Delta R.T.: 0.004 min
 Response: 67914341
 Conc: 547.85 ng/ml



#34 AR-1260-4

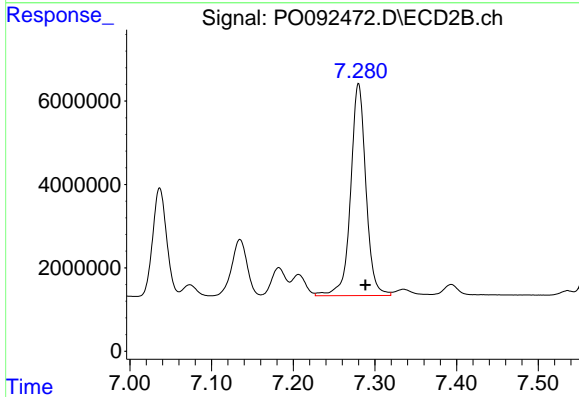
R.T.: 7.037 min
 Delta R.T.: -0.009 min
 Response: 30549210
 Conc: 456.18 ng/ml



#35 AR-1260-5

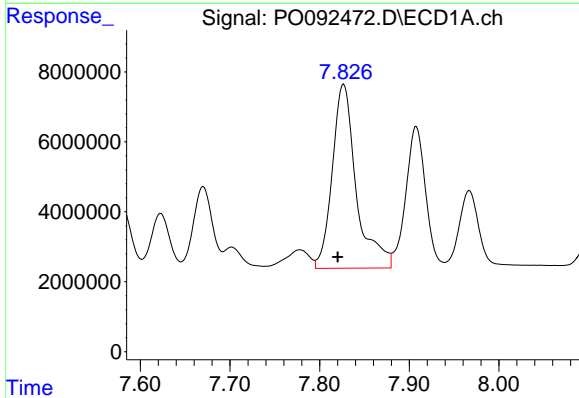
R.T.: 8.473 min
 Delta R.T.: 0.004 min
 Response: 120320215
 Conc: 541.84 ng/ml

Instrument :
 ECD_P
 ClientSampleId :



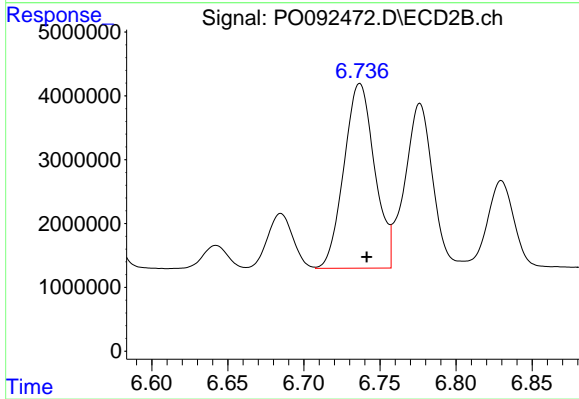
#35 AR-1260-5

R.T.: 7.280 min
 Delta R.T.: -0.008 min
 Response: 66146386
 Conc: 464.84 ng/ml



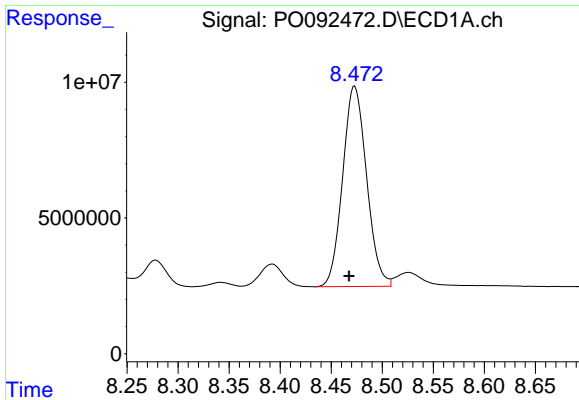
#36 AR-1262-1

R.T.: 7.827 min
 Delta R.T.: 0.007 min
 Response: 97700431
 Conc: 904.21 ng/ml



#36 AR-1262-1

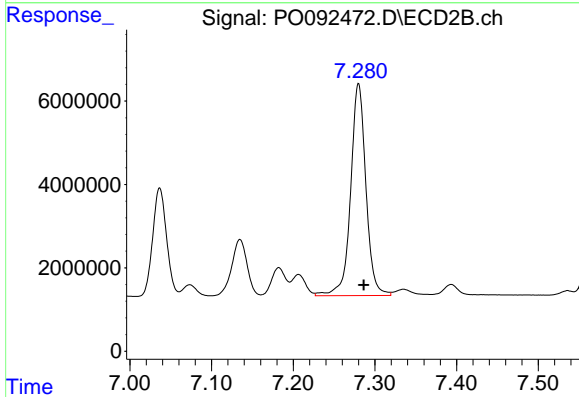
R.T.: 6.737 min
 Delta R.T.: -0.005 min
 Response: 40587669
 Conc: 874.55 ng/ml



#37 AR-1262-2

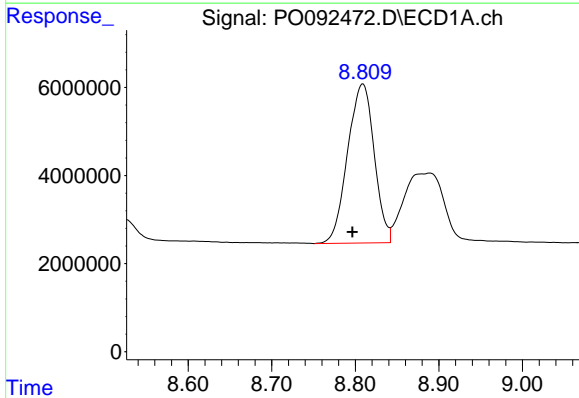
R.T.: 8.473 min
 Delta R.T.: 0.005 min
 Response: 120320215
 Conc: 504.03 ng/ml

Instrument :
 ECD_P
 ClientSampleId :



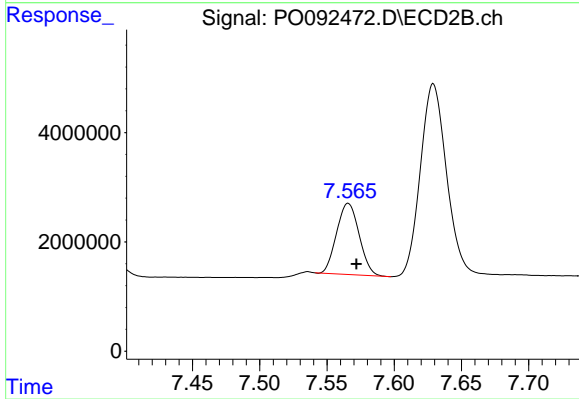
#37 AR-1262-2

R.T.: 7.280 min
 Delta R.T.: -0.006 min
 Response: 66146386
 Conc: 448.33 ng/ml



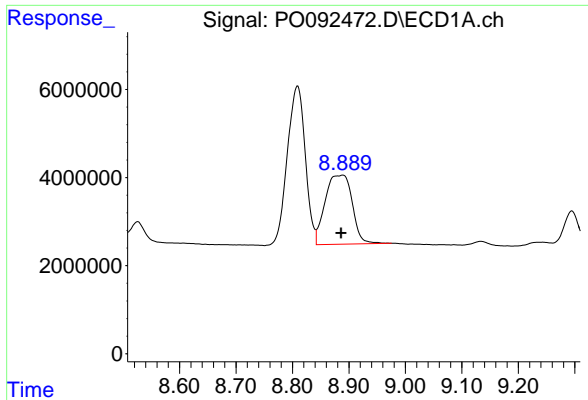
#38 AR-1262-3

R.T.: 8.809 min
 Delta R.T.: 0.012 min
 Response: 79770638
 Conc: 471.89 ng/ml



#38 AR-1262-3

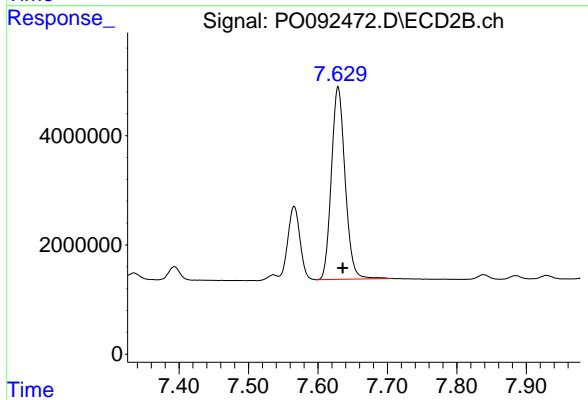
R.T.: 7.566 min
 Delta R.T.: -0.006 min
 Response: 15145690
 Conc: 242.34 ng/ml



#39 AR-1262-4

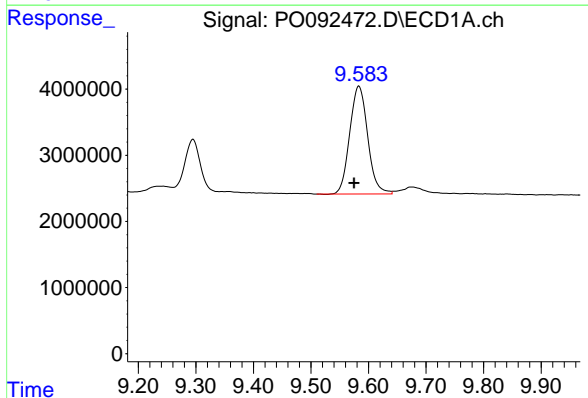
R.T.: 8.889 min
Delta R.T.: 0.003 min
Response: 52219162
Conc: 513.28 ng/ml

Instrument :
ECD_P
ClientSampleId :



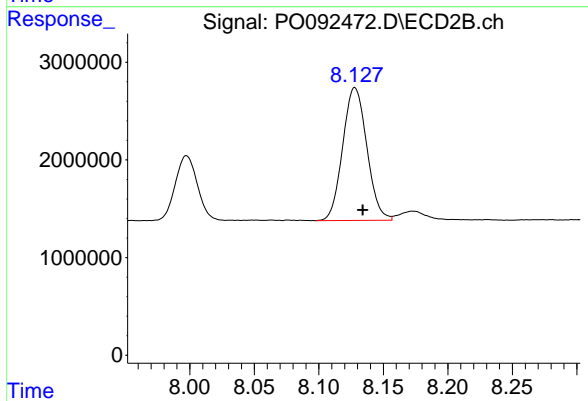
#39 AR-1262-4

R.T.: 7.629 min
Delta R.T.: -0.007 min
Response: 48303562
Conc: 440.88 ng/ml



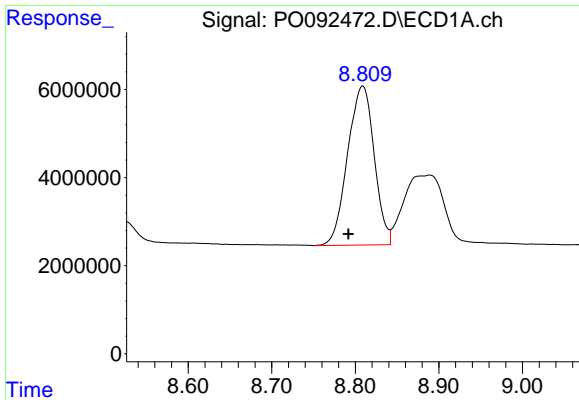
#40 AR-1262-5

R.T.: 9.583 min
Delta R.T.: 0.008 min
Response: 35622535
Conc: 398.33 ng/ml



#40 AR-1262-5

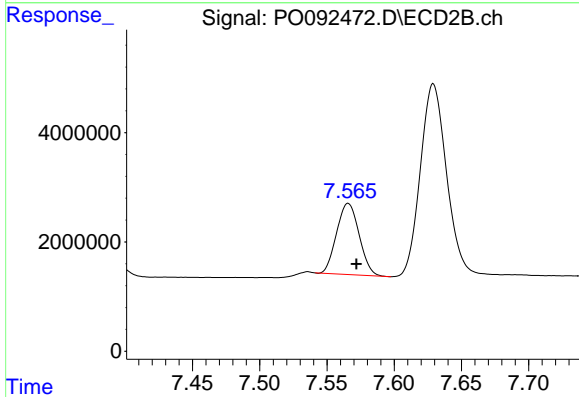
R.T.: 8.128 min
Delta R.T.: -0.006 min
Response: 17737748
Conc: 344.25 ng/ml



#41 AR-1268-1

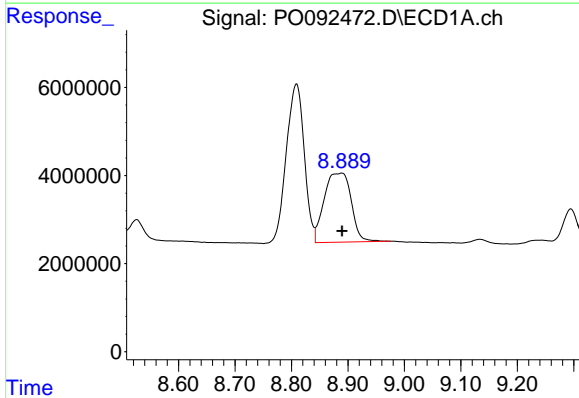
R.T.: 8.809 min
Delta R.T.: 0.018 min
Response: 79770638
Conc: 252.17 ng/ml

Instrument :
ECD_P
ClientSampleId :



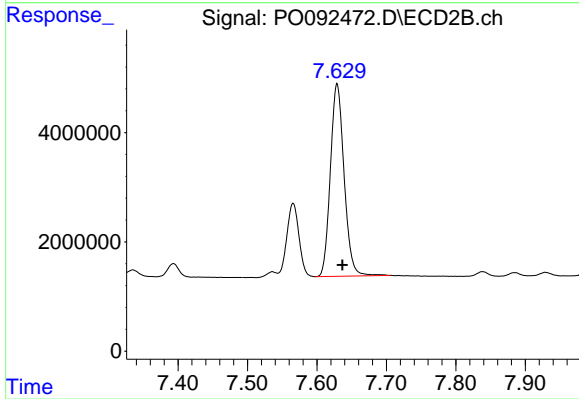
#41 AR-1268-1

R.T.: 7.566 min
Delta R.T.: -0.006 min
Response: 15145690
Conc: 83.24 ng/ml



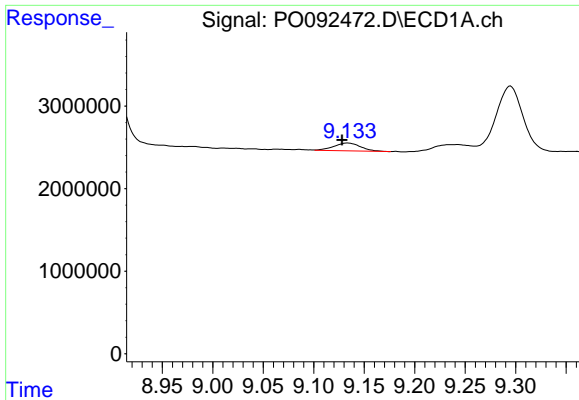
#42 AR-1268-2

R.T.: 8.889 min
Delta R.T.: 0.000 min
Response: 52219162
Conc: 173.00 ng/ml



#42 AR-1268-2

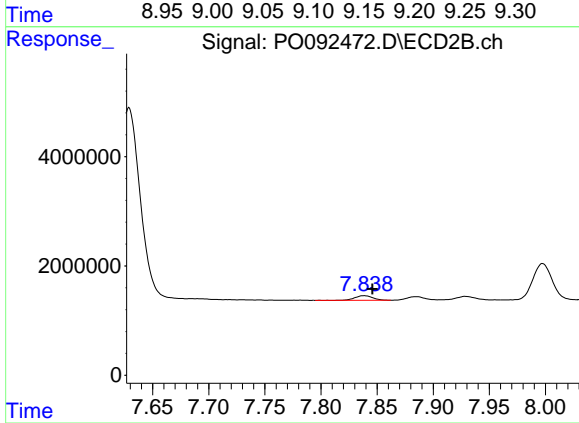
R.T.: 7.629 min
Delta R.T.: -0.007 min
Response: 48303562
Conc: 291.89 ng/ml



#43 AR-1268-3

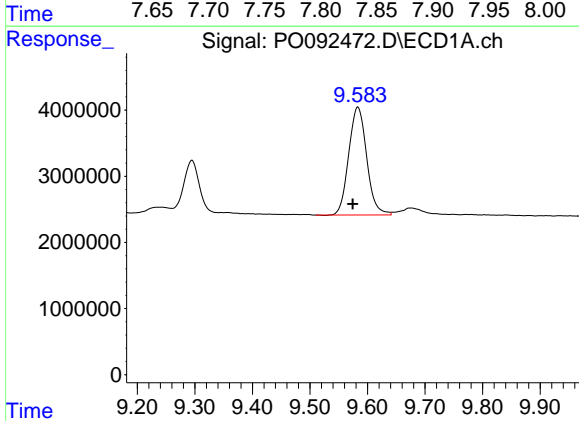
R.T.: 9.134 min
 Delta R.T.: 0.005 min
 Response: 1776161
 Conc: 7.02 ng/ml

Instrument :
 ECD_P
 ClientSampleId :



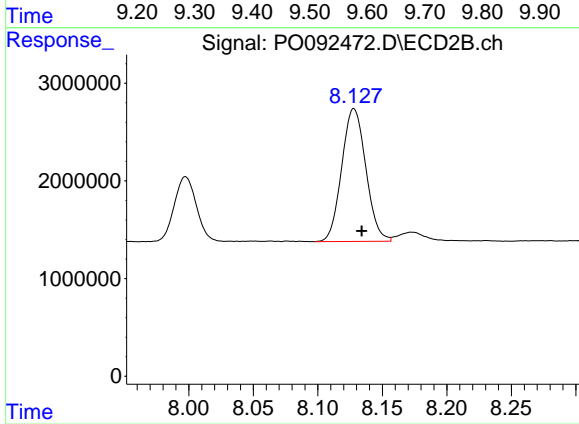
#43 AR-1268-3

R.T.: 7.838 min
 Delta R.T.: -0.007 min
 Response: 928711
 Conc: 6.25 ng/ml



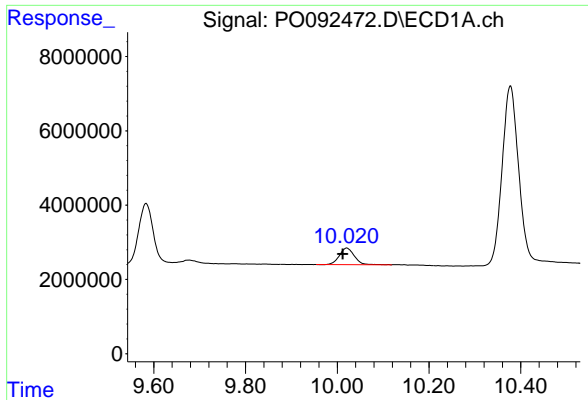
#44 AR-1268-4

R.T.: 9.583 min
 Delta R.T.: 0.009 min
 Response: 35622535
 Conc: 340.82 ng/ml



#44 AR-1268-4

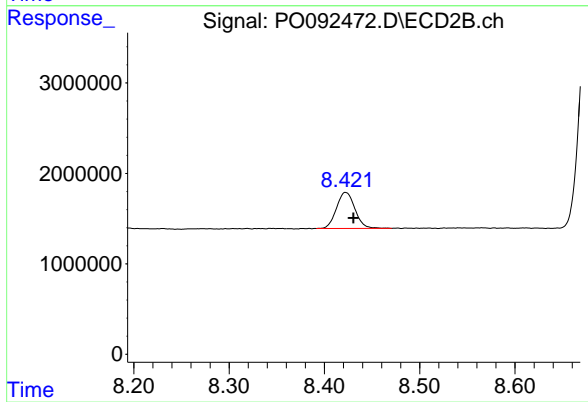
R.T.: 8.128 min
 Delta R.T.: -0.006 min
 Response: 17737748
 Conc: 282.57 ng/ml



#45 AR-1268-5

R.T.: 10.021 min
Delta R.T.: 0.009 min
Response: 10086519
Conc: 12.75 ng/ml

Instrument :
ECD_P
ClientSampleId :



#45 AR-1268-5

R.T.: 8.422 min
Delta R.T.: -0.008 min
Response: 5351077
Conc: 12.64 ng/ml