

Data Path : Z:\pestpcbsrv\HPCHEM1\ECD\_P\Data\PP021722\  
 Data File : PP043801.D  
 Signal(s) : Signal #1: ECD1A.ch Signal #2: ECD2B.ch  
 Acq On : 17 Feb 2022 15:18  
 Operator : YP\AJ  
 Sample : N1561-02  
 Misc :  
 ALS Vial : 24 Sample Multiplier: 1

Instrument :  
 ECD\_P  
 ClientSampleId :

Integration File signal 1: autoint1.e  
 Integration File signal 2: autoint2.e  
 Quant Time: Feb 18 00:42:10 2022  
 Quant Method : Z:\pestpcbsrv\HPCHEM1\ECD\_P\methods\PP021022.M  
 Quant Title : GC EXTRACTABLES  
 QLast Update : Fri Feb 11 04:48:05 2022  
 Response via : Initial Calibration  
 Integrator: ChemStation

Volume Inj. : 2 µl  
 Signal #1 Phase : ZB-MR1 Signal #2 Phase: ZB-MR2  
 Signal #1 Info : 30Mx0.32mmx 0.50µ Signal #2 Info : 30M x 0.32mm x 0.25µm

Compound	RT#1	RT#2	Resp#1	Resp#2	ng/ml	ng/ml
System Monitoring Compounds						
1) SA Tetrachlo...	3.916	3.174	43943096	39359011	19.874	20.955
2) SA Decachlor...	10.062	8.548	16935267	25422905	14.257	15.670
Target Compounds						
3) L1 AR-1016-1	5.187	4.320	210367	68893	2.899	1.124 #
4) L1 AR-1016-2	5.202	4.341	86709	1774124	0.822	20.998 #
5) L1 AR-1016-3	5.260	4.538	121115	739872	1.839	15.837 #
6) L1 AR-1016-4	5.381	4.572	2066120	1971430	38.099	52.753 #
7) L1 AR-1016-5	5.683	4.798	984006	2667012	18.733	58.381 #
8) L2 AR-1221-1	4.136	3.397	2453148	242229	96.356	10.155 #
9) L2 AR-1221-2	4.239	3.505	309526	156271	16.123	8.653 #
10) L2 AR-1221-3	4.316	3.568	73180	650320	1.274	12.606 #
11) L3 AR-1232-1	4.316	3.568	73180	650320	1.508	15.115 #
12) L3 AR-1232-2	4.882	4.341	564331	1774124	23.814	49.698 #
13) L3 AR-1232-3	5.202	4.538	86709	739872	2.014	37.837 #
14) L3 AR-1232-4	5.381	4.614	2066120	562251	94.653	32.514 #
15) L3 AR-1232-5	5.465	4.798	2451739	2667012	152.006	141.982
16) L4 AR-1242-1	5.187	4.320	210367	68893	3.744	1.413 #
17) L4 AR-1242-2	5.202	4.341	86709	1774124	1.048	26.348 #
18) L4 AR-1242-3	5.267	4.538	176904	739872	3.418	19.710 #
19) L4 AR-1242-4	5.381	4.614	2066120	562251	48.373	15.571 #
20) L4 AR-1242-5	6.174	5.175	3979777	12496981	92.163	290.304 #
21) L5 AR-1248-1	5.187	4.320	210367	68893	5.131	1.849 #
22) L5 AR-1248-2	5.465	4.572	2451739	1971430	43.155	40.298
23) L5 AR-1248-3	5.683	4.614	984006	562251	14.749	10.957 #
24) L5 AR-1248-4	6.124	4.798	6309356	2667012	90.305	45.492 #
25) L5 AR-1248-5	6.174	5.220	3979777	6209330	57.569	108.370 #
26) L6 AR-1254-1	6.097	5.175	7010911	12496981	92.790	143.096 #
27) L6 AR-1254-2	6.336	5.336	11773204	12287316	104.960	161.088 #
28) L6 AR-1254-3	6.735	5.767	17439766	29094154	150.716	237.390 #
29) L6 AR-1254-4	7.049	6.017	7132982	8447824	89.348	107.036
30) L6 AR-1254-5	7.510	6.468	31450828	41061734	366.718	355.069
31) L7 AR-1260-1	6.915	5.908	14878158	24886956	177.666	311.204 #
32) L7 AR-1260-2	7.197	6.115	20700994	24650803	228.688	252.433
33) L7 AR-1260-3	7.594	6.277	11536828	18937084	159.154	207.436 #
34) L7 AR-1260-4	7.841	6.790	18584120	10845708	216.456	134.046 #
35) L7 AR-1260-5	8.186	7.058	25819774	26987229	166.571	145.983
36) L8 AR-1262-1	7.594	6.510	11536828	13336260	116.841	121.313
37) L8 AR-1262-2	8.186	6.790	25819774	10845708	159.933	106.326 #
38) L8 AR-1262-3	8.528	7.366	14080983	7027927	128.712	82.464 #
39) L8 AR-1262-4	8.610	7.435	4603447	23763115	95.992	153.000 #
40) L8 AR-1262-5	9.294	7.978	5457668	8157068	98.003	104.855
41) L9 AR-1268-1	8.528	7.366	14080983	7027927	72.234	27.739 #

Data Path : Z:\pestpcbsrv\HPCHEM1\ECD\_P\Data\PP021722\  
 Data File : PP043801.D  
 Signal(s) : Signal #1: ECD1A.ch Signal #2: ECD2B.ch  
 Acq On : 17 Feb 2022 15:18  
 Operator : YP\AJ  
 Sample : N1561-02  
 Misc :  
 ALS Vial : 24 Sample Multiplier: 1

Instrument :  
 ECD\_P  
 ClientSampleId :

Integration File signal 1: autoint1.e  
 Integration File signal 2: autoint2.e  
 Quant Time: Feb 18 00:42:10 2022  
 Quant Method : Z:\pestpcbsrv\HPCHEM1\ECD\_P\methods\PP021022.M  
 Quant Title : GC EXTRACTABLES  
 QLast Update : Fri Feb 11 04:48:05 2022  
 Response via : Initial Calibration  
 Integrator: ChemStation

Volume Inj. : 2 µl  
 Signal #1 Phase : ZB-MR1 Signal #2 Phase: ZB-MR2  
 Signal #1 Info : 30Mx0.32mmx 0.50µ Signal #2 Info : 30M x 0.32mm x 0.25µm

	Compound	RT#1	RT#2	Resp#1	Resp#2	ng/ml	ng/ml
42)	L9 AR-1268-2	8.610	7.435	4603447	23763115	26.299	105.164 #
43)	L9 AR-1268-3	8.848	7.654	96459	2030881	0.625	10.429 #
44)	L9 AR-1268-4	9.294	7.978	5457668	8157068	87.225	90.708
45)	L9 AR-1268-5	9.725	8.283	7093867	12911464	15.610	21.488 #

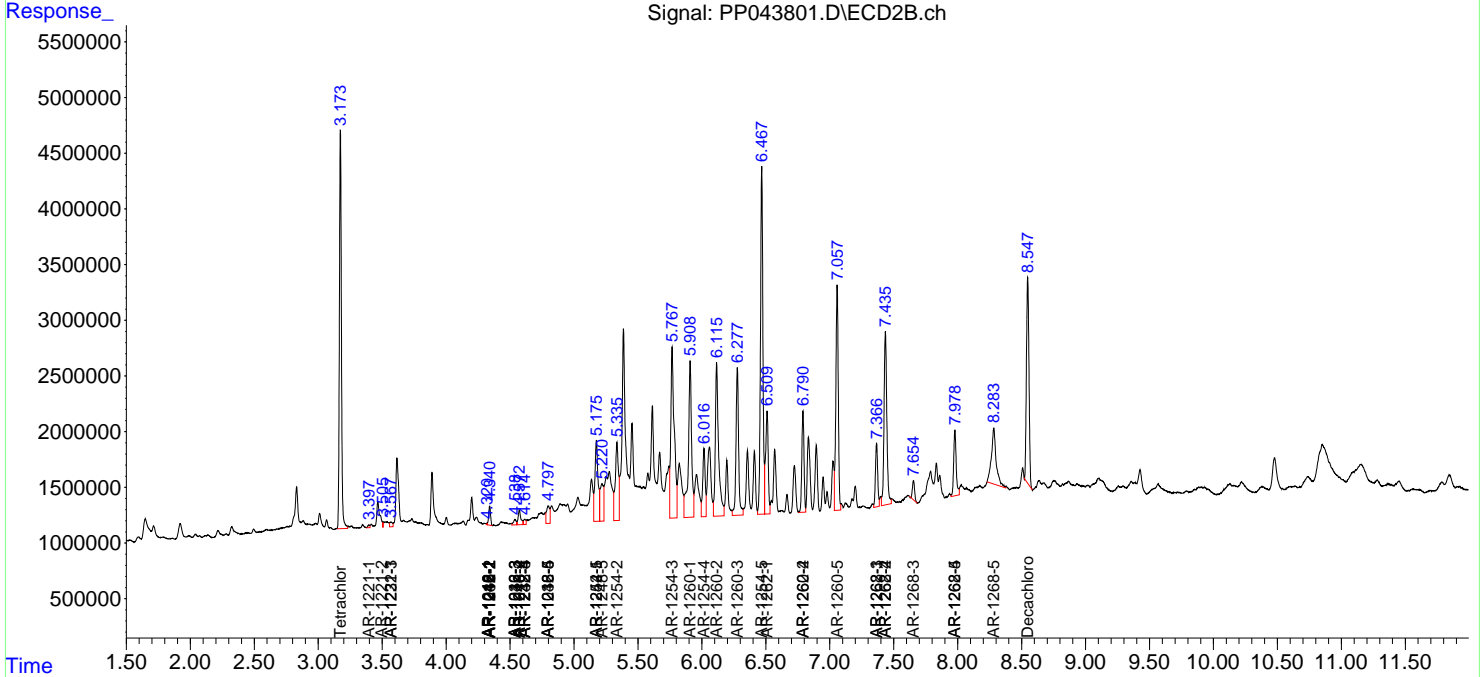
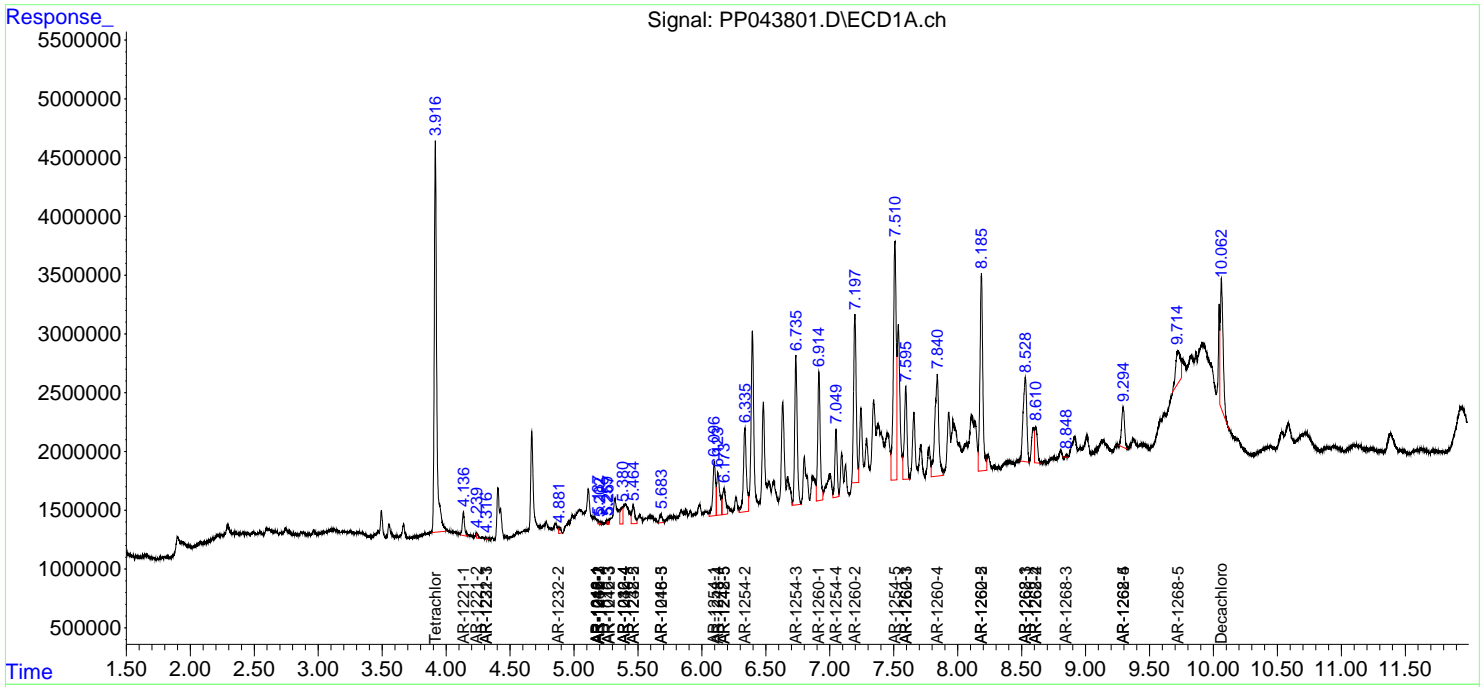
(f)=RT Delta > 1/2 Window (#)=Amounts differ by > 25% (m)=manual int.

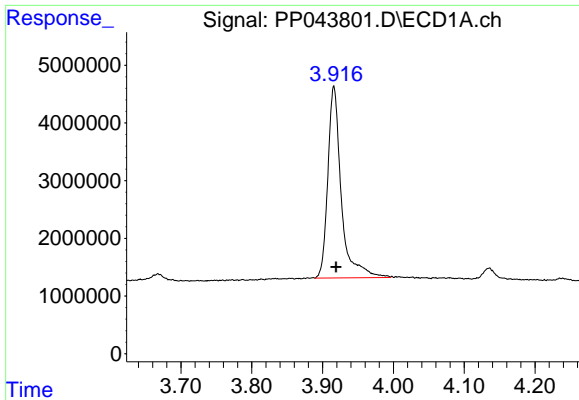
Data Path : Z:\pestpcbsrv\HPCHEM1\ECD\_P\Data\PP021722\  
 Data File : PP043801.D  
 Signal(s) : Signal #1: ECD1A.ch Signal #2: ECD2B.ch  
 Acq On : 17 Feb 2022 15:18  
 Operator : YP\AJ  
 Sample : N1561-02  
 Misc :  
 ALS Vial : 24 Sample Multiplier: 1

Instrument :  
 ECD\_P  
 ClientSampleId :

Integration File signal 1: autoint1.e  
 Integration File signal 2: autoint2.e  
 Quant Time: Feb 18 00:42:10 2022  
 Quant Method : Z:\pestpcbsrv\HPCHEM1\ECD\_P\methods\PP021022.M  
 Quant Title : GC EXTRACTABLES  
 QLast Update : Fri Feb 11 04:48:05 2022  
 Response via : Initial Calibration  
 Integrator: ChemStation

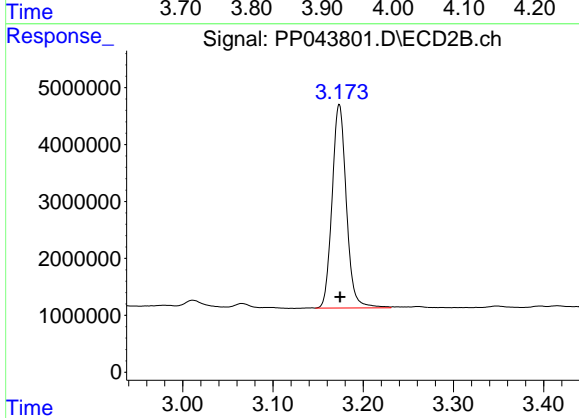
Volume Inj. : 2 µl  
 Signal #1 Phase : ZB-MR1 Signal #2 Phase: ZB-MR2  
 Signal #1 Info : 30Mx0.32mmx 0.50µ Signal #2 Info : 30M x 0.32mm x 0.25µm



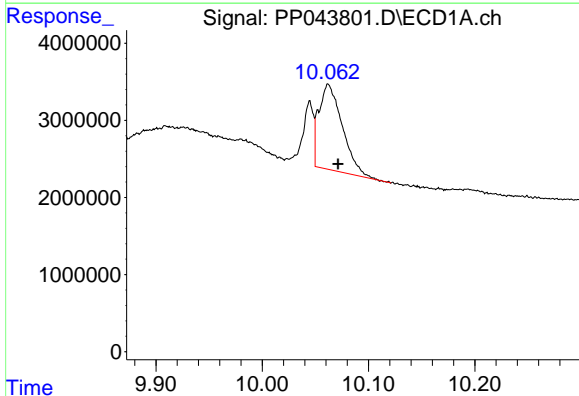


#1 Tetrachloro-m-xylene  
 R.T.: 3.916 min  
 Delta R.T.: -0.003 min  
 Response: 43943096  
 Conc: 19.87 ng/ml

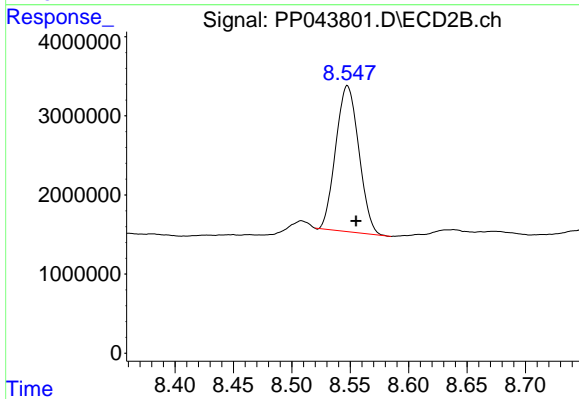
Instrument :  
 ECD\_P  
 ClientSampleId :



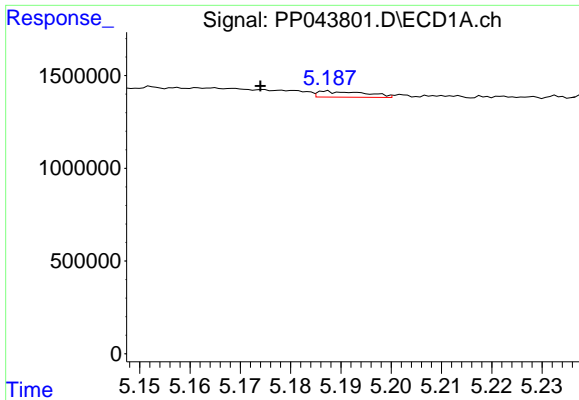
#1 Tetrachloro-m-xylene  
 R.T.: 3.174 min  
 Delta R.T.: 0.000 min  
 Response: 39359011  
 Conc: 20.95 ng/ml



#2 Decachlorobiphenyl  
 R.T.: 10.062 min  
 Delta R.T.: -0.009 min  
 Response: 16935267  
 Conc: 14.26 ng/ml



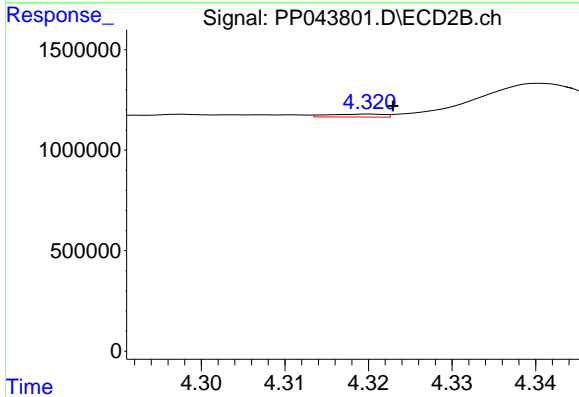
#2 Decachlorobiphenyl  
 R.T.: 8.548 min  
 Delta R.T.: -0.007 min  
 Response: 25422905  
 Conc: 15.67 ng/ml



#3 AR-1016-1

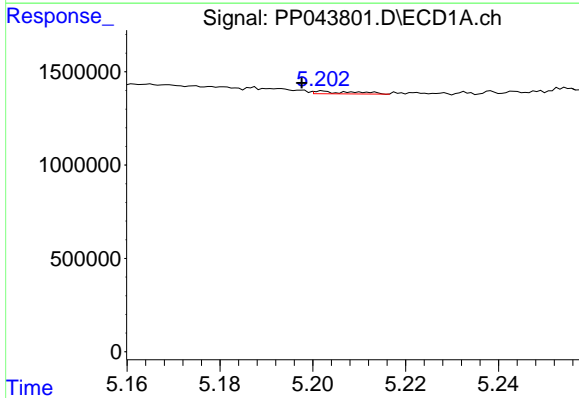
R.T.: 5.187 min  
 Delta R.T.: 0.013 min  
 Response: 210367  
 Conc: 2.90 ng/ml

Instrument :  
 ECD\_P  
 ClientSampleId :



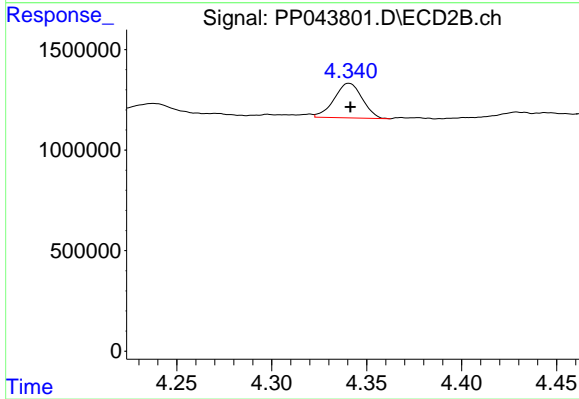
#3 AR-1016-1

R.T.: 4.320 min  
 Delta R.T.: -0.003 min  
 Response: 68893  
 Conc: 1.12 ng/ml



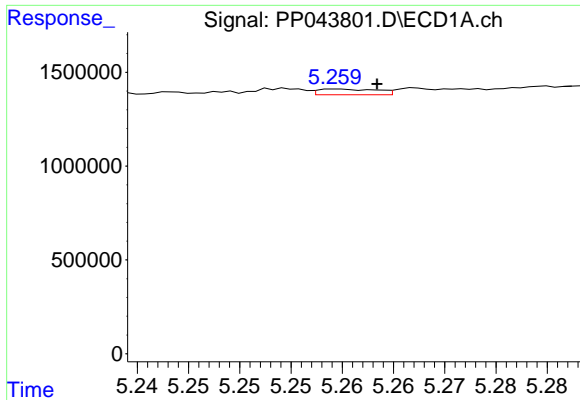
#4 AR-1016-2

R.T.: 5.202 min  
 Delta R.T.: 0.005 min  
 Response: 86709  
 Conc: 0.82 ng/ml



#4 AR-1016-2

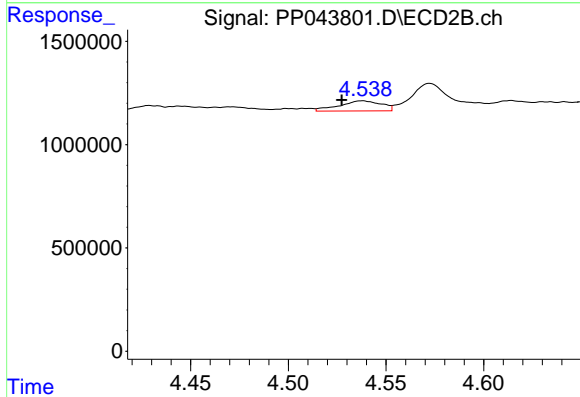
R.T.: 4.341 min  
 Delta R.T.: 0.000 min  
 Response: 1774124  
 Conc: 21.00 ng/ml



#5 AR-1016-3

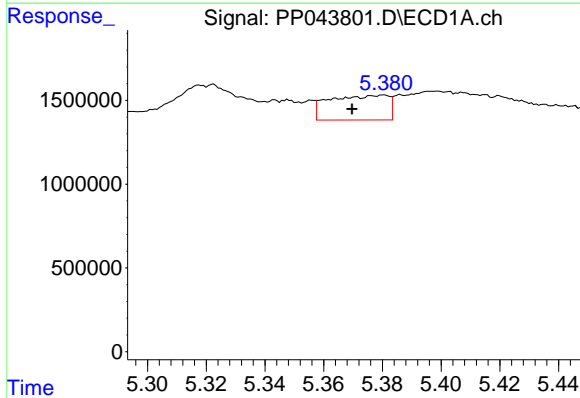
R.T.: 5.260 min  
 Delta R.T.: -0.004 min  
 Response: 121115  
 Conc: 1.84 ng/ml

Instrument :  
 ECD\_P  
 ClientSampleId :



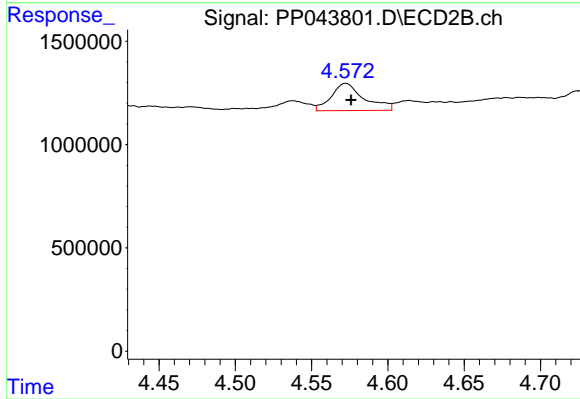
#5 AR-1016-3

R.T.: 4.538 min  
 Delta R.T.: 0.011 min  
 Response: 739872  
 Conc: 15.84 ng/ml



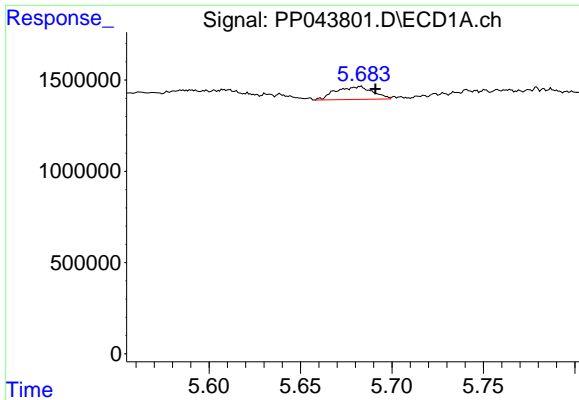
#6 AR-1016-4

R.T.: 5.381 min  
 Delta R.T.: 0.011 min  
 Response: 2066120  
 Conc: 38.10 ng/ml



#6 AR-1016-4

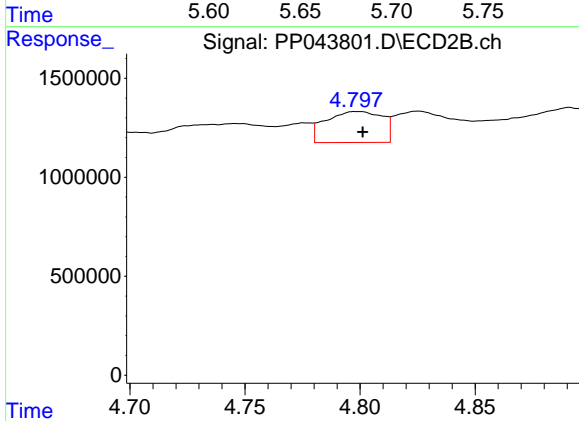
R.T.: 4.572 min  
 Delta R.T.: -0.003 min  
 Response: 1971430  
 Conc: 52.75 ng/ml



#7 AR-1016-5

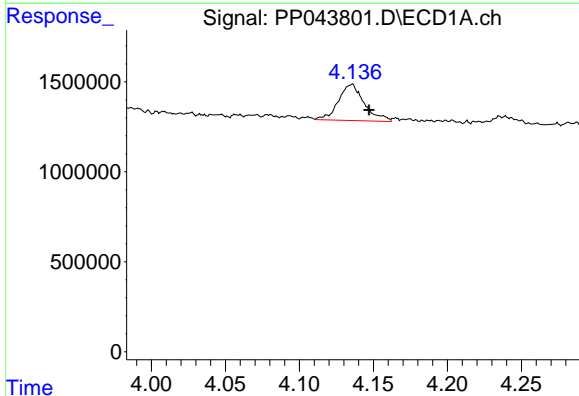
R.T.: 5.683 min  
 Delta R.T.: -0.008 min  
 Response: 984006  
 Conc: 18.73 ng/ml

Instrument :  
 ECD\_P  
 ClientSampleId :



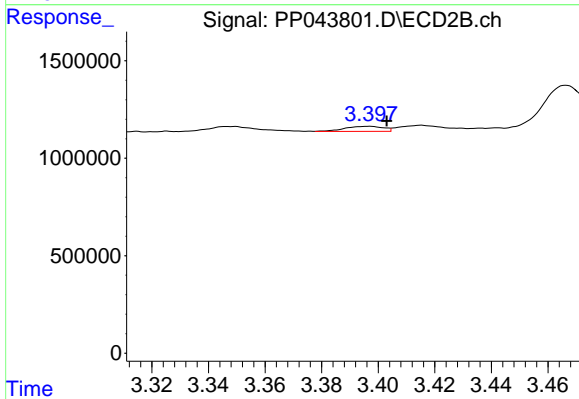
#7 AR-1016-5

R.T.: 4.798 min  
 Delta R.T.: -0.003 min  
 Response: 2667012  
 Conc: 58.38 ng/ml



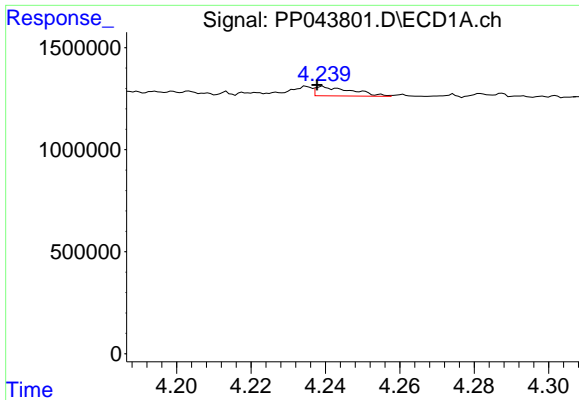
#8 AR-1221-1

R.T.: 4.136 min  
 Delta R.T.: -0.011 min  
 Response: 2453148  
 Conc: 96.36 ng/ml



#8 AR-1221-1

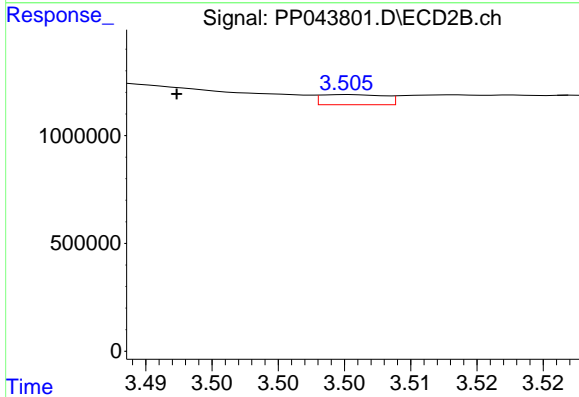
R.T.: 3.397 min  
 Delta R.T.: -0.006 min  
 Response: 242229  
 Conc: 10.15 ng/ml



#9 AR-1221-2

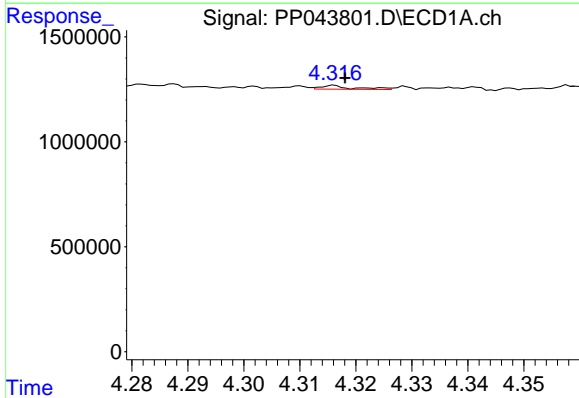
R.T.: 4.239 min  
 Delta R.T.: 0.002 min  
 Response: 309526  
 Conc: 16.12 ng/ml

Instrument :  
 ECD\_P  
 ClientSampleId :



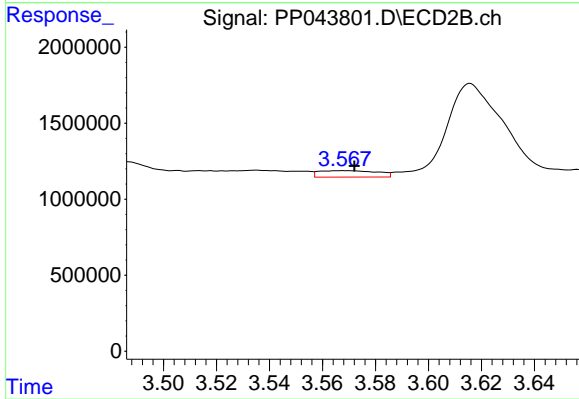
#9 AR-1221-2

R.T.: 3.505 min  
 Delta R.T.: 0.013 min  
 Response: 156271  
 Conc: 8.65 ng/ml



#10 AR-1221-3

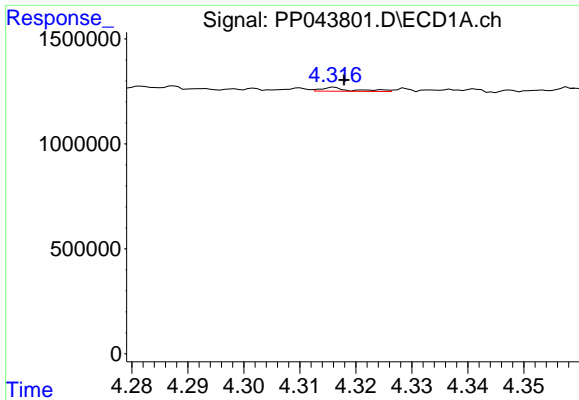
R.T.: 4.316 min  
 Delta R.T.: -0.002 min  
 Response: 73180  
 Conc: 1.27 ng/ml



#10 AR-1221-3

R.T.: 3.568 min  
 Delta R.T.: -0.004 min  
 Response: 650320  
 Conc: 12.61 ng/ml

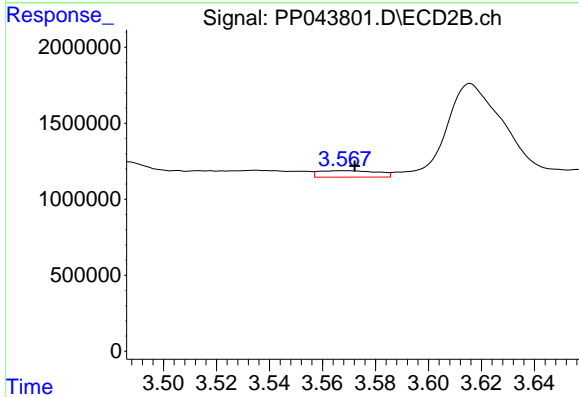




#11 AR-1232-1

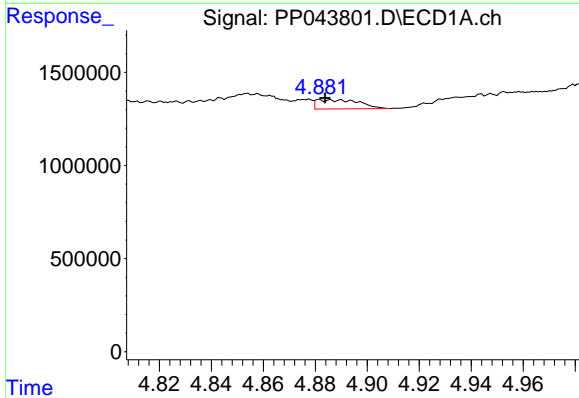
R.T.: 4.316 min  
 Delta R.T.: -0.002 min  
 Response: 73180  
 Conc: 1.51 ng/ml

Instrument :  
 ECD\_P  
 ClientSampleId :



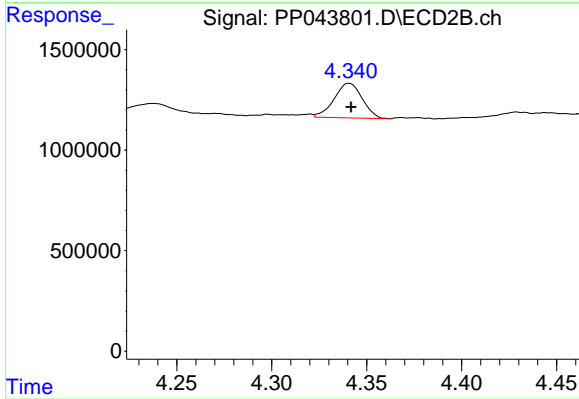
#11 AR-1232-1

R.T.: 3.568 min  
 Delta R.T.: -0.004 min  
 Response: 650320  
 Conc: 15.11 ng/ml



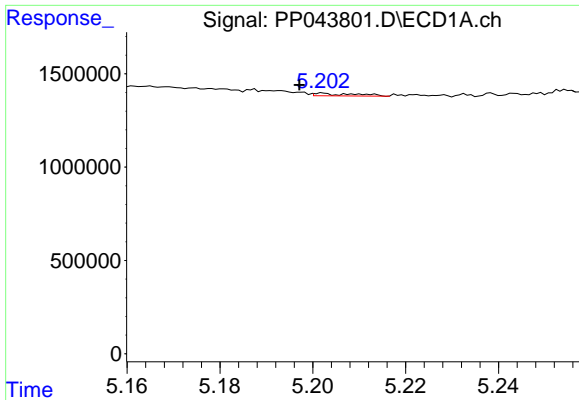
#12 AR-1232-2

R.T.: 4.882 min  
 Delta R.T.: -0.002 min  
 Response: 564331  
 Conc: 23.81 ng/ml



#12 AR-1232-2

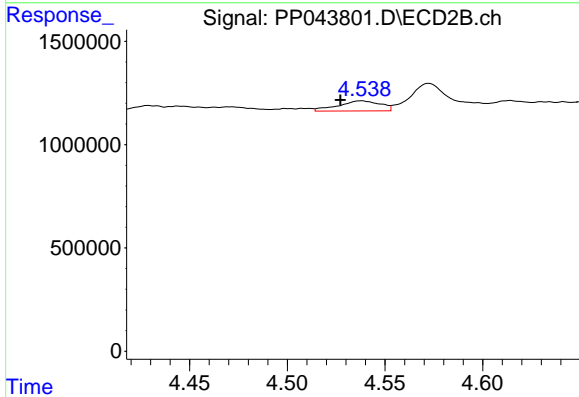
R.T.: 4.341 min  
 Delta R.T.: -0.001 min  
 Response: 1774124  
 Conc: 49.70 ng/ml



#13 AR-1232-3

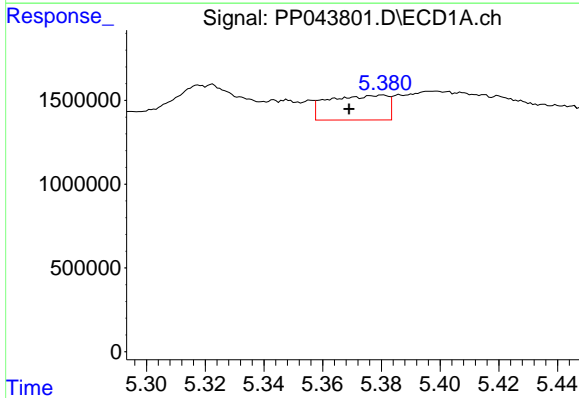
R.T.: 5.202 min  
 Delta R.T.: 0.005 min  
 Response: 86709  
 Conc: 2.01 ng/ml

Instrument :  
 ECD\_P  
 ClientSampleId :



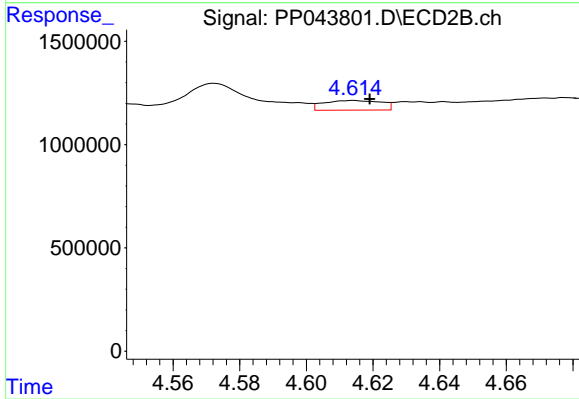
#13 AR-1232-3

R.T.: 4.538 min  
 Delta R.T.: 0.011 min  
 Response: 739872  
 Conc: 37.84 ng/ml



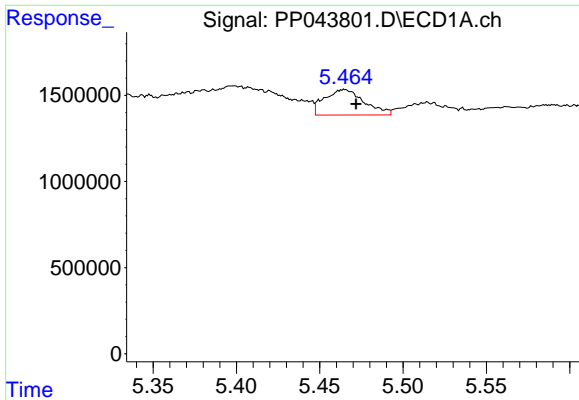
#14 AR-1232-4

R.T.: 5.381 min  
 Delta R.T.: 0.011 min  
 Response: 2066120  
 Conc: 94.65 ng/ml



#14 AR-1232-4

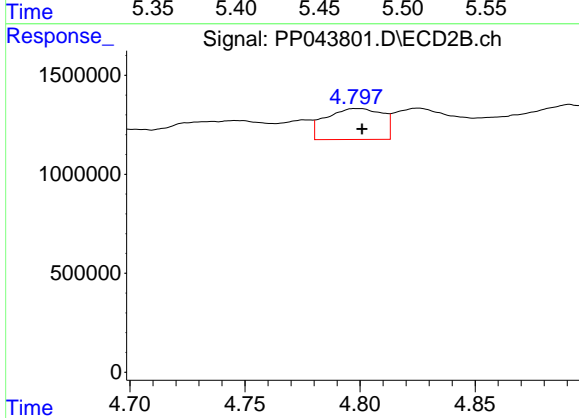
R.T.: 4.614 min  
 Delta R.T.: -0.005 min  
 Response: 562251  
 Conc: 32.51 ng/ml



#15 AR-1232-5

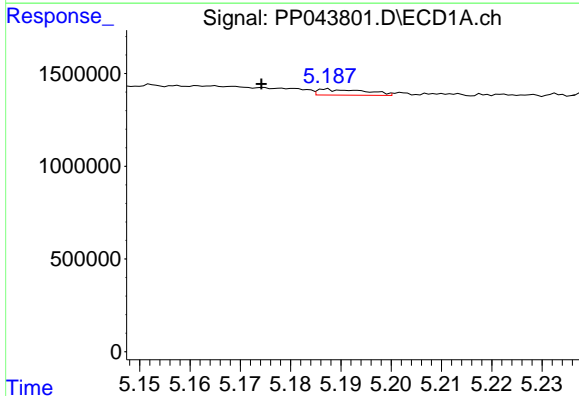
R.T.: 5.465 min  
 Delta R.T.: -0.007 min  
 Response: 2451739  
 Conc: 152.01 ng/ml

Instrument :  
 ECD\_P  
 ClientSampleId :



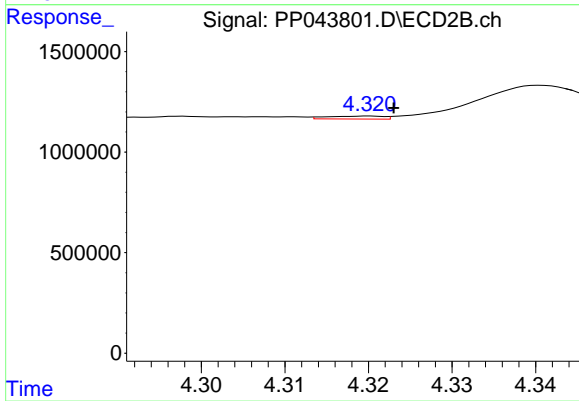
#15 AR-1232-5

R.T.: 4.798 min  
 Delta R.T.: -0.003 min  
 Response: 2667012  
 Conc: 141.98 ng/ml



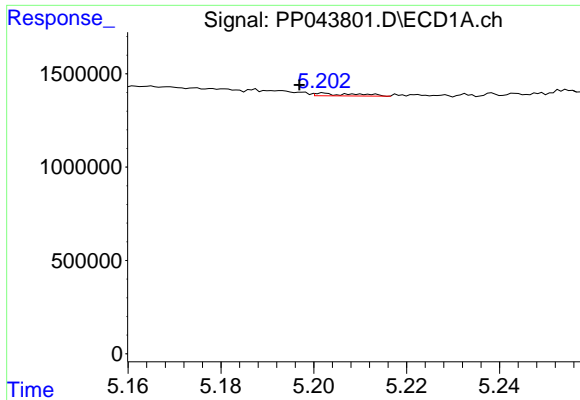
#16 AR-1242-1

R.T.: 5.187 min  
 Delta R.T.: 0.013 min  
 Response: 210367  
 Conc: 3.74 ng/ml



#16 AR-1242-1

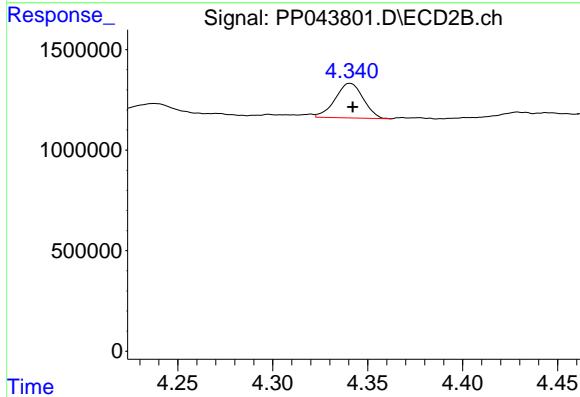
R.T.: 4.320 min  
 Delta R.T.: -0.003 min  
 Response: 68893  
 Conc: 1.41 ng/ml



#17 AR-1242-2

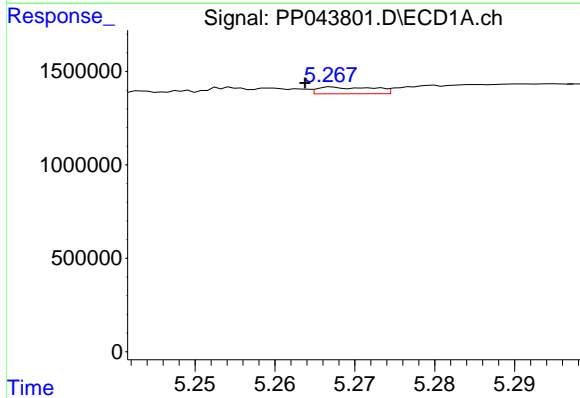
R.T.: 5.202 min  
 Delta R.T.: 0.005 min  
 Response: 86709  
 Conc: 1.05 ng/ml

Instrument :  
 ECD\_P  
 ClientSampleId :



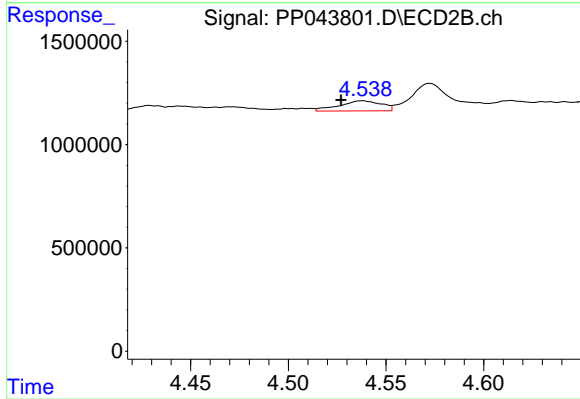
#17 AR-1242-2

R.T.: 4.341 min  
 Delta R.T.: -0.001 min  
 Response: 1774124  
 Conc: 26.35 ng/ml



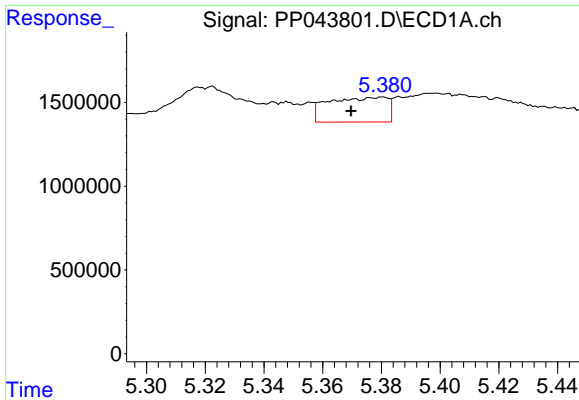
#18 AR-1242-3

R.T.: 5.267 min  
 Delta R.T.: 0.004 min  
 Response: 176904  
 Conc: 3.42 ng/ml



#18 AR-1242-3

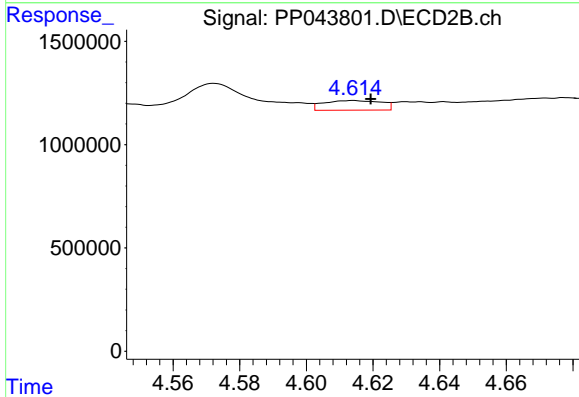
R.T.: 4.538 min  
 Delta R.T.: 0.011 min  
 Response: 739872  
 Conc: 19.71 ng/ml



#19 AR-1242-4

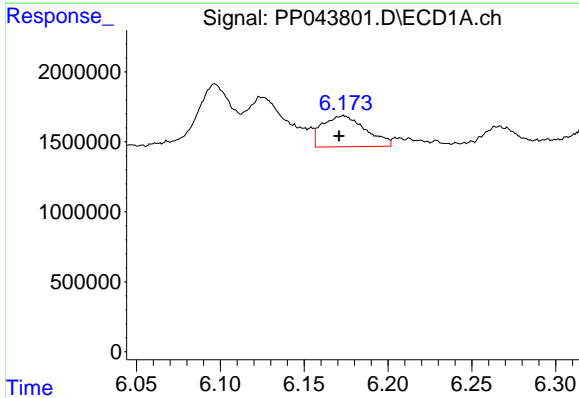
R.T.: 5.381 min  
 Delta R.T.: 0.011 min  
 Response: 2066120  
 Conc: 48.37 ng/ml

Instrument :  
 ECD\_P  
 ClientSampleId :



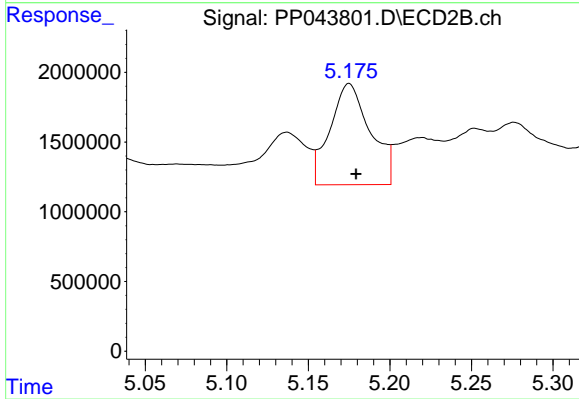
#19 AR-1242-4

R.T.: 4.614 min  
 Delta R.T.: -0.005 min  
 Response: 562251  
 Conc: 15.57 ng/ml



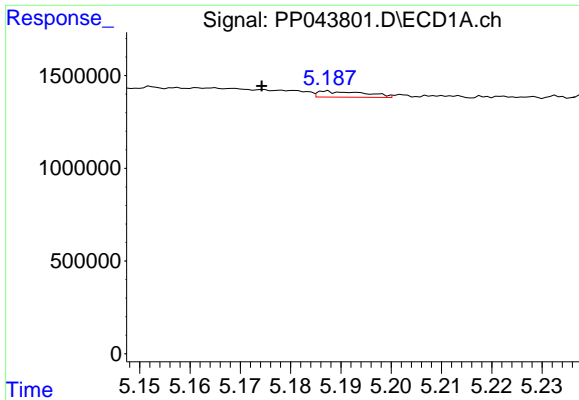
#20 AR-1242-5

R.T.: 6.174 min  
 Delta R.T.: 0.003 min  
 Response: 3979777  
 Conc: 92.16 ng/ml



#20 AR-1242-5

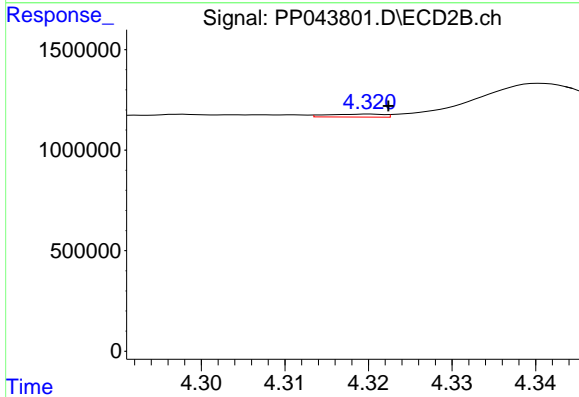
R.T.: 5.175 min  
 Delta R.T.: -0.004 min  
 Response: 12496981  
 Conc: 290.30 ng/ml



#21 AR-1248-1

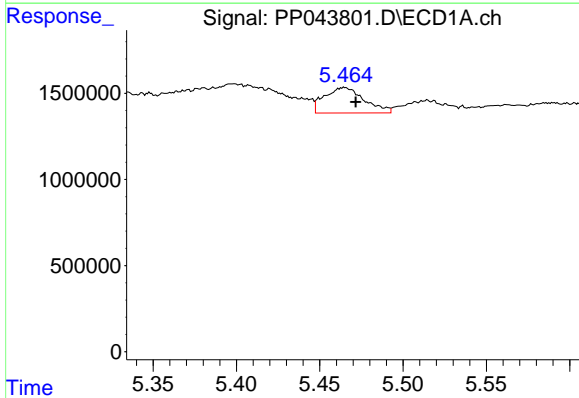
R.T.: 5.187 min  
 Delta R.T.: 0.013 min  
 Response: 210367  
 Conc: 5.13 ng/ml

Instrument :  
 ECD\_P  
 ClientSampleId :



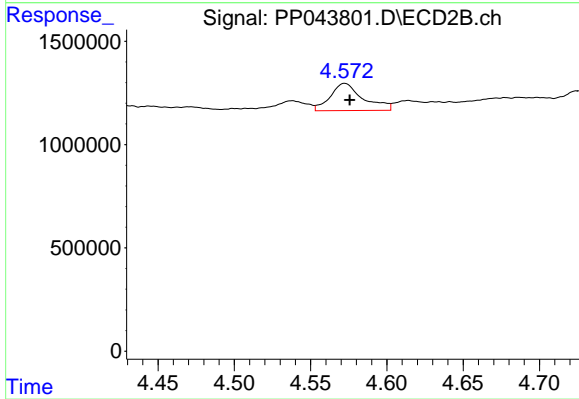
#21 AR-1248-1

R.T.: 4.320 min  
 Delta R.T.: -0.002 min  
 Response: 68893  
 Conc: 1.85 ng/ml



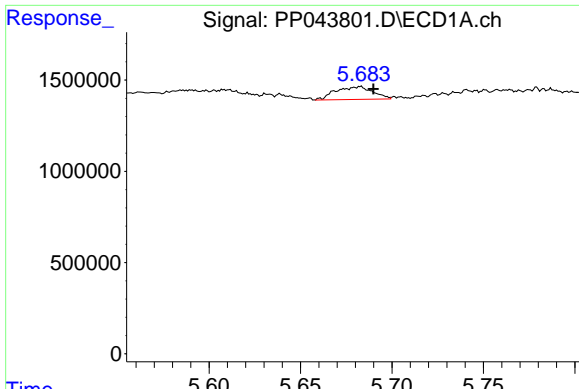
#22 AR-1248-2

R.T.: 5.465 min  
 Delta R.T.: -0.007 min  
 Response: 2451739  
 Conc: 43.15 ng/ml



#22 AR-1248-2

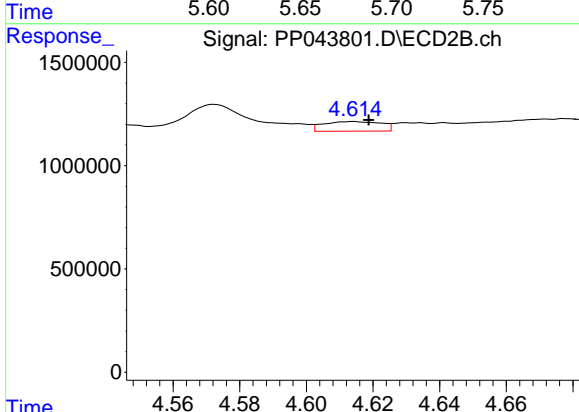
R.T.: 4.572 min  
 Delta R.T.: -0.003 min  
 Response: 1971430  
 Conc: 40.30 ng/ml



#23 AR-1248-3

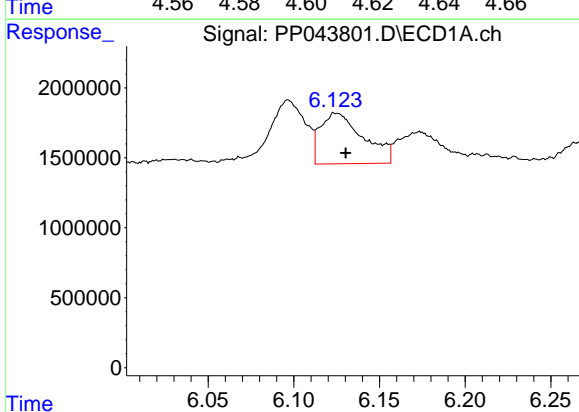
R.T.: 5.683 min  
 Delta R.T.: -0.007 min  
 Response: 984006  
 Conc: 14.75 ng/ml

Instrument :  
 ECD\_P  
 ClientSampleId :



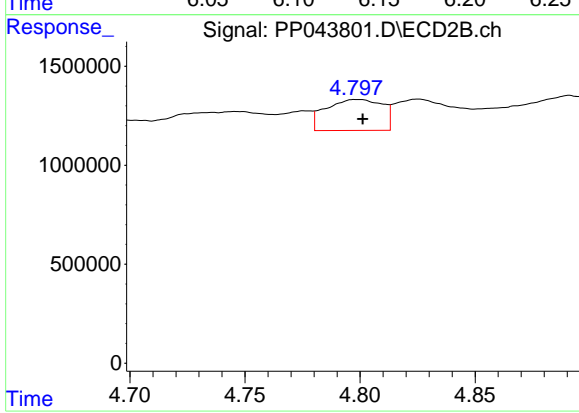
#23 AR-1248-3

R.T.: 4.614 min  
 Delta R.T.: -0.004 min  
 Response: 562251  
 Conc: 10.96 ng/ml



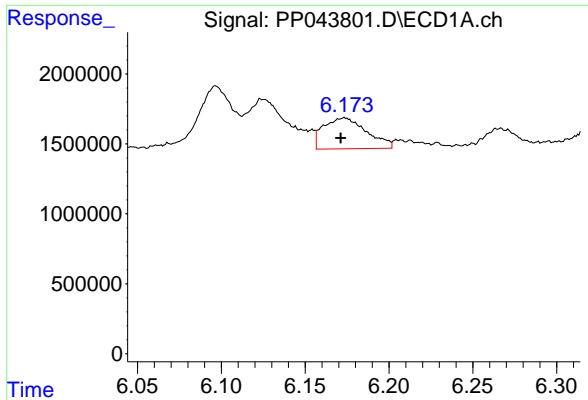
#24 AR-1248-4

R.T.: 6.124 min  
 Delta R.T.: -0.007 min  
 Response: 6309356  
 Conc: 90.31 ng/ml



#24 AR-1248-4

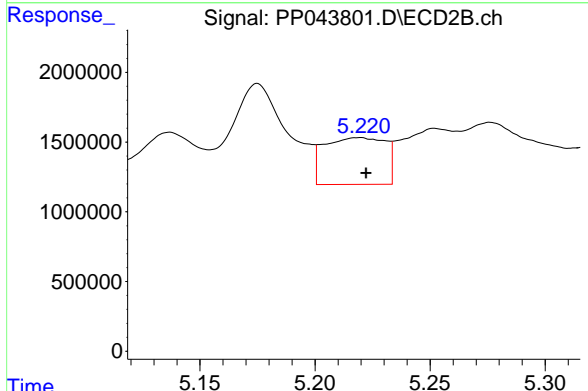
R.T.: 4.798 min  
 Delta R.T.: -0.003 min  
 Response: 2667012  
 Conc: 45.49 ng/ml



#25 AR-1248-5

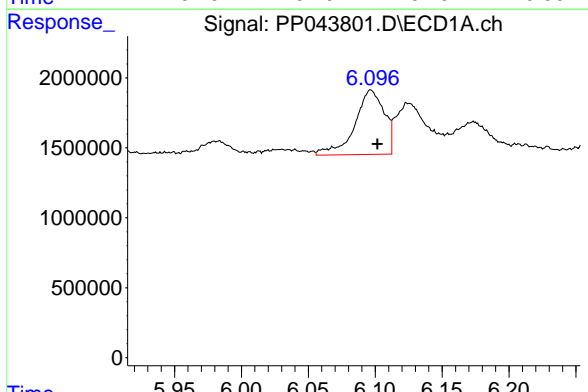
R.T.: 6.174 min  
 Delta R.T.: 0.002 min  
 Response: 3979777  
 Conc: 57.57 ng/ml

Instrument :  
 ECD\_P  
 ClientSampleId :



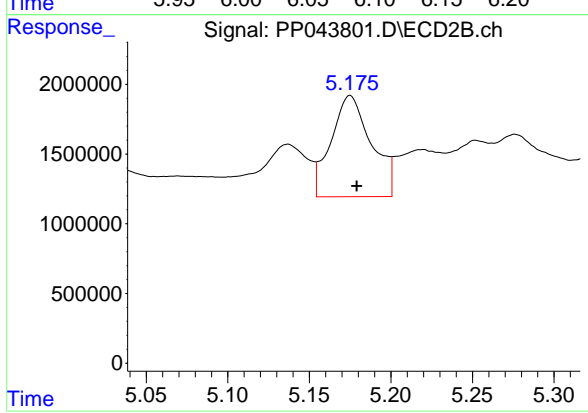
#25 AR-1248-5

R.T.: 5.220 min  
 Delta R.T.: -0.002 min  
 Response: 6209330  
 Conc: 108.37 ng/ml



#26 AR-1254-1

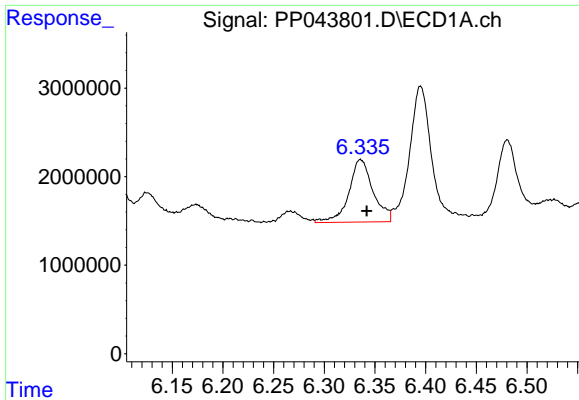
R.T.: 6.097 min  
 Delta R.T.: -0.005 min  
 Response: 7010911  
 Conc: 92.79 ng/ml



#26 AR-1254-1

R.T.: 5.175 min  
 Delta R.T.: -0.004 min  
 Response: 12496981  
 Conc: 143.10 ng/ml

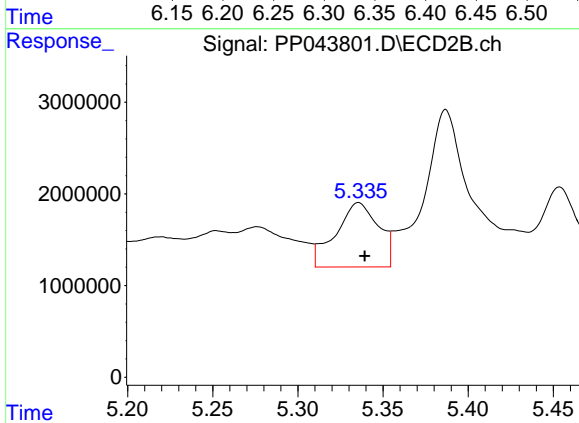




#27 AR-1254-2

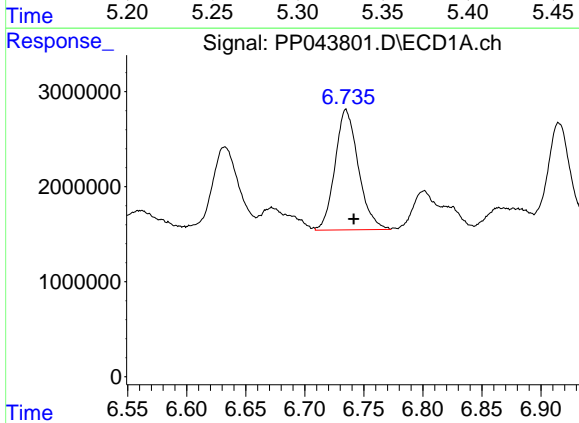
R.T.: 6.336 min  
 Delta R.T.: -0.006 min  
 Response: 11773204  
 Conc: 104.96 ng/ml

Instrument :  
 ECD\_P  
 ClientSampleId :



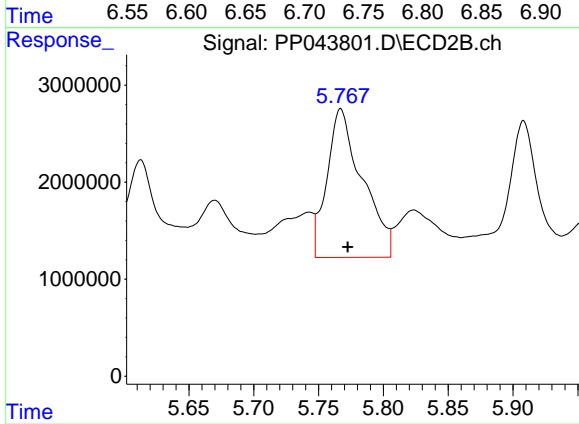
#27 AR-1254-2

R.T.: 5.336 min  
 Delta R.T.: -0.004 min  
 Response: 12287316  
 Conc: 161.09 ng/ml



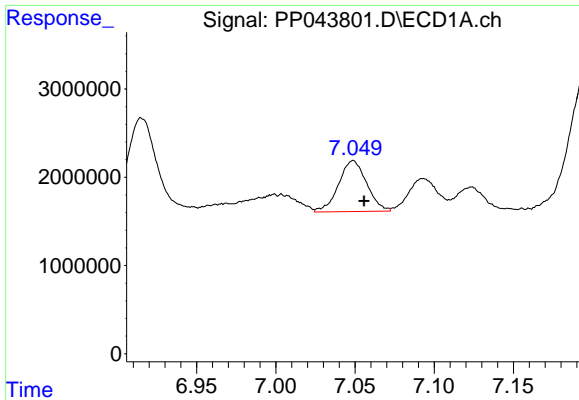
#28 AR-1254-3

R.T.: 6.735 min  
 Delta R.T.: -0.007 min  
 Response: 17439766  
 Conc: 150.72 ng/ml



#28 AR-1254-3

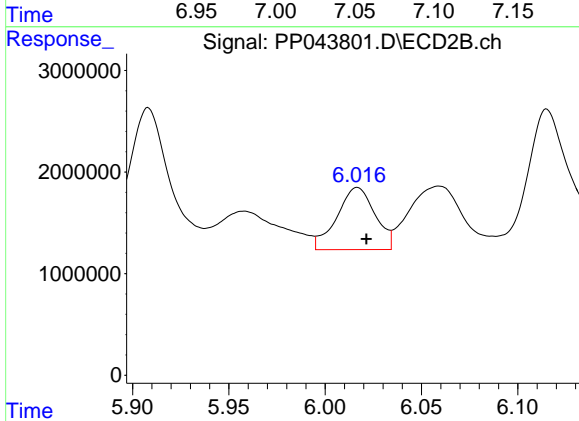
R.T.: 5.767 min  
 Delta R.T.: -0.005 min  
 Response: 29094154  
 Conc: 237.39 ng/ml



#29 AR-1254-4

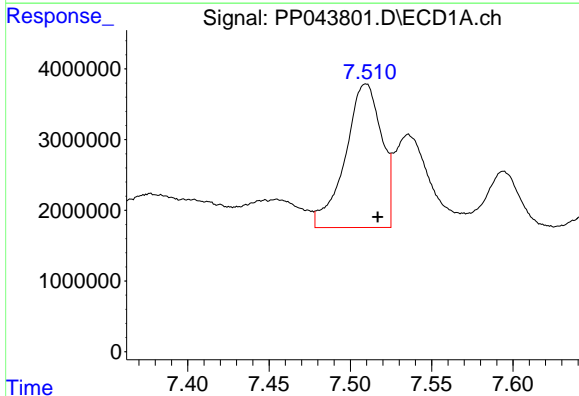
R.T.: 7.049 min  
 Delta R.T.: -0.007 min  
 Response: 7132982  
 Conc: 89.35 ng/ml

Instrument :  
 ECD\_P  
 ClientSampleId :



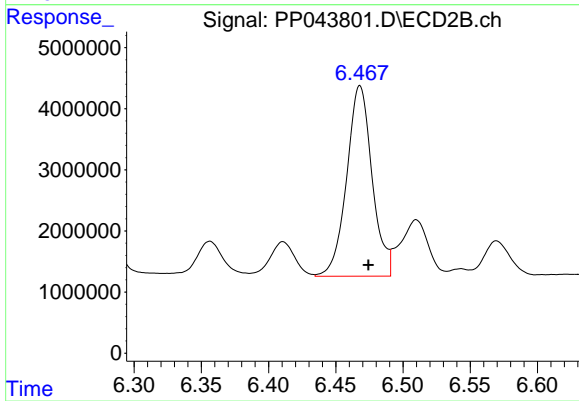
#29 AR-1254-4

R.T.: 6.017 min  
 Delta R.T.: -0.005 min  
 Response: 8447824  
 Conc: 107.04 ng/ml



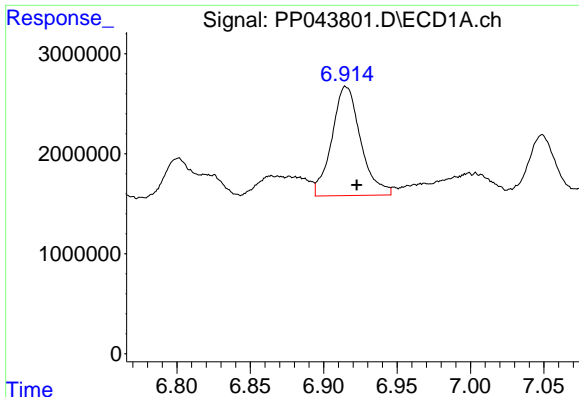
#30 AR-1254-5

R.T.: 7.510 min  
 Delta R.T.: -0.007 min  
 Response: 31450828  
 Conc: 366.72 ng/ml



#30 AR-1254-5

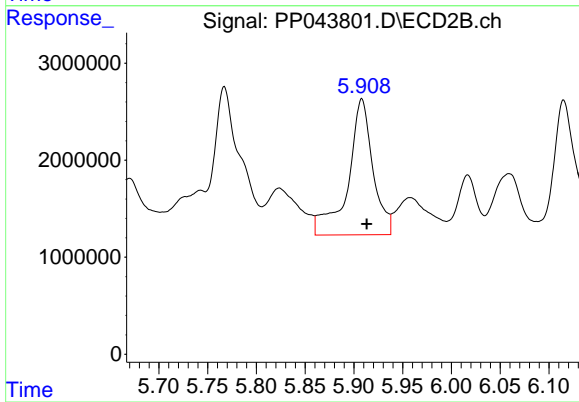
R.T.: 6.468 min  
 Delta R.T.: -0.006 min  
 Response: 41061734  
 Conc: 355.07 ng/ml



#31 AR-1260-1

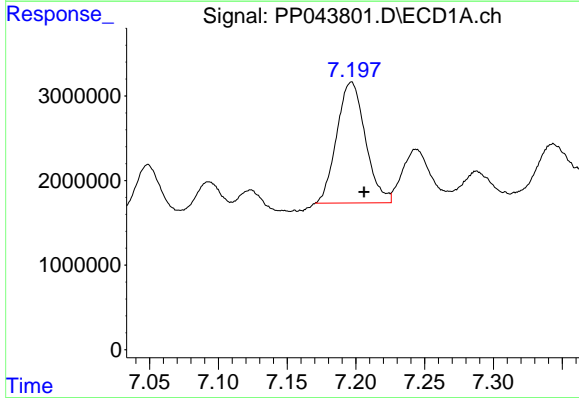
R.T.: 6.915 min  
 Delta R.T.: -0.008 min  
 Response: 14878158  
 Conc: 177.67 ng/ml

Instrument :  
 ECD\_P  
 ClientSampleId :



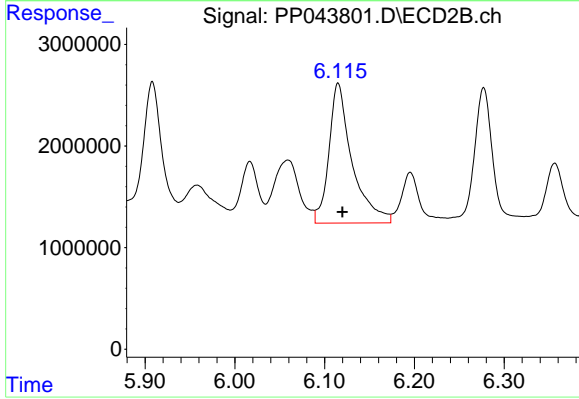
#31 AR-1260-1

R.T.: 5.908 min  
 Delta R.T.: -0.005 min  
 Response: 24886956  
 Conc: 311.20 ng/ml



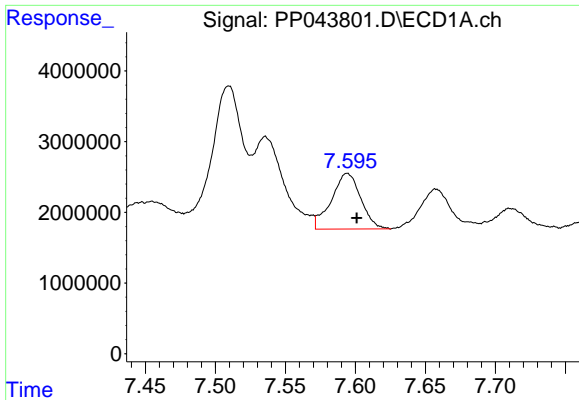
#32 AR-1260-2

R.T.: 7.197 min  
 Delta R.T.: -0.009 min  
 Response: 20700994  
 Conc: 228.69 ng/ml



#32 AR-1260-2

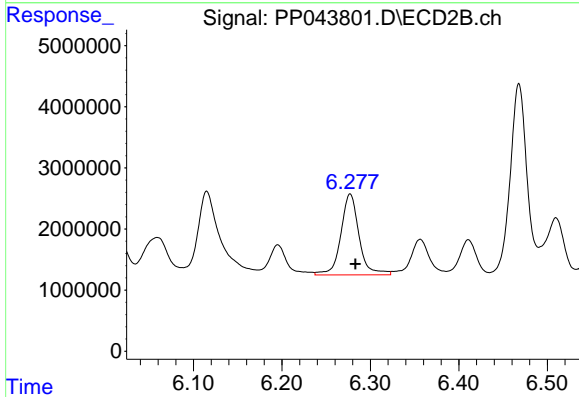
R.T.: 6.115 min  
 Delta R.T.: -0.005 min  
 Response: 24650803  
 Conc: 252.43 ng/ml



#33 AR-1260-3

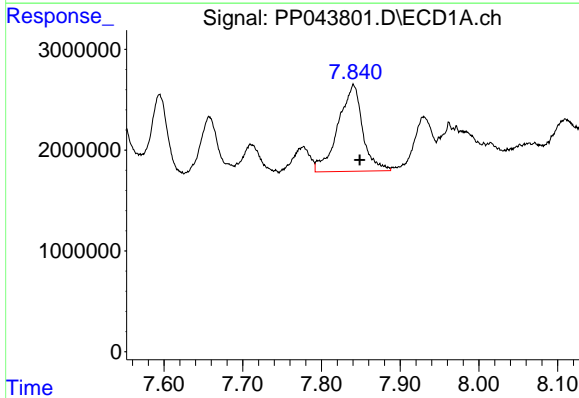
R.T.: 7.594 min  
 Delta R.T.: -0.007 min  
 Response: 11536828  
 Conc: 159.15 ng/ml

Instrument :  
 ECD\_P  
 ClientSampleId :



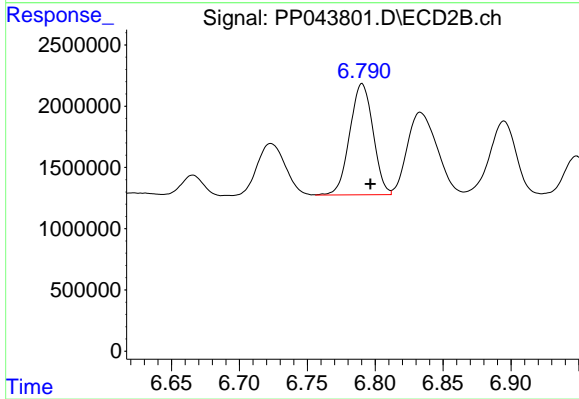
#33 AR-1260-3

R.T.: 6.277 min  
 Delta R.T.: -0.006 min  
 Response: 18937084  
 Conc: 207.44 ng/ml



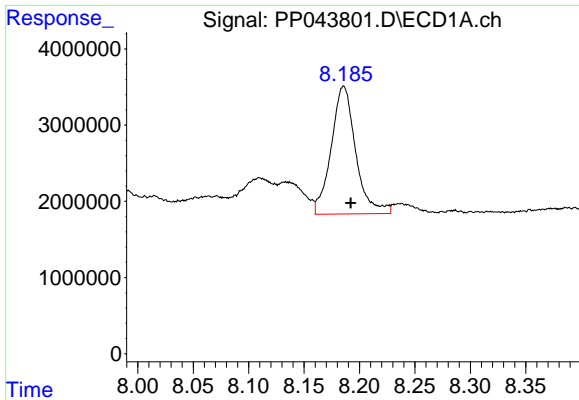
#34 AR-1260-4

R.T.: 7.841 min  
 Delta R.T.: -0.008 min  
 Response: 18584120  
 Conc: 216.46 ng/ml



#34 AR-1260-4

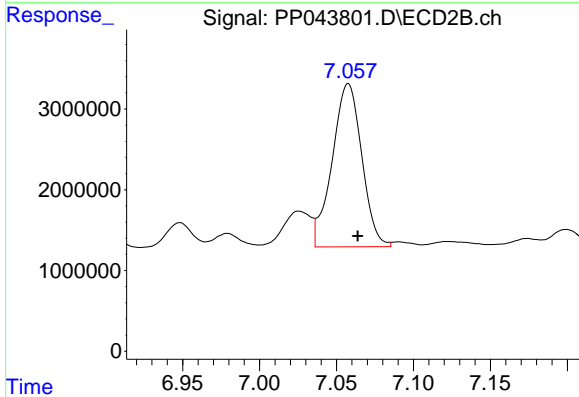
R.T.: 6.790 min  
 Delta R.T.: -0.006 min  
 Response: 10845708  
 Conc: 134.05 ng/ml



#35 AR-1260-5

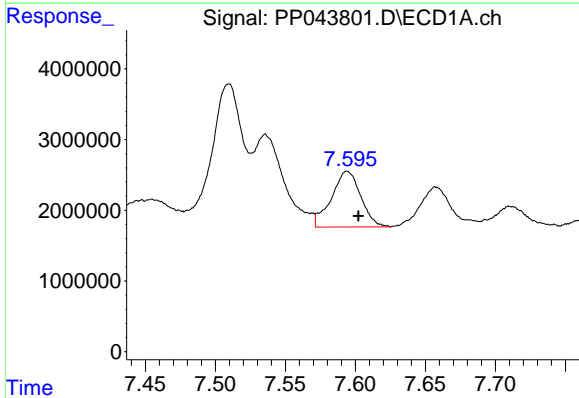
R.T.: 8.186 min  
 Delta R.T.: -0.006 min  
 Response: 25819774  
 Conc: 166.57 ng/ml

Instrument :  
 ECD\_P  
 ClientSampleId :



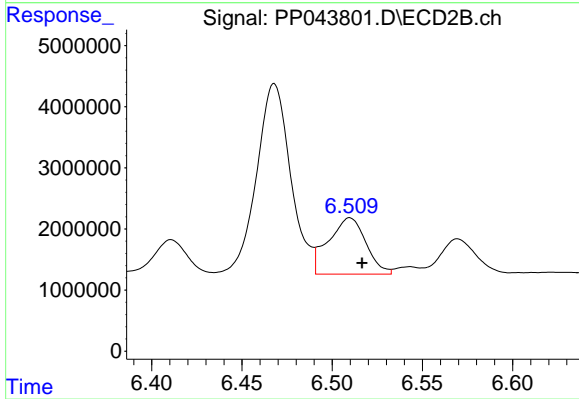
#35 AR-1260-5

R.T.: 7.058 min  
 Delta R.T.: -0.006 min  
 Response: 26987229  
 Conc: 145.98 ng/ml



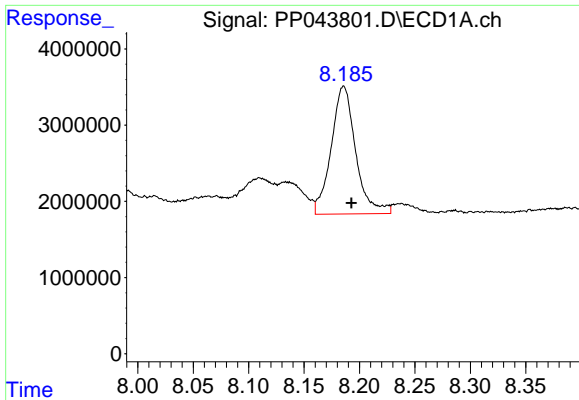
#36 AR-1262-1

R.T.: 7.594 min  
 Delta R.T.: -0.008 min  
 Response: 11536828  
 Conc: 116.84 ng/ml



#36 AR-1262-1

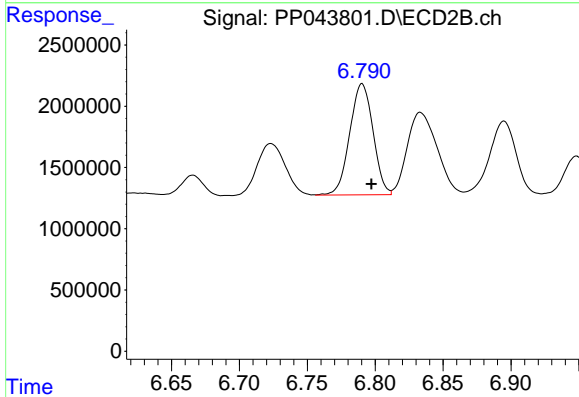
R.T.: 6.510 min  
 Delta R.T.: -0.007 min  
 Response: 13336260  
 Conc: 121.31 ng/ml



#37 AR-1262-2

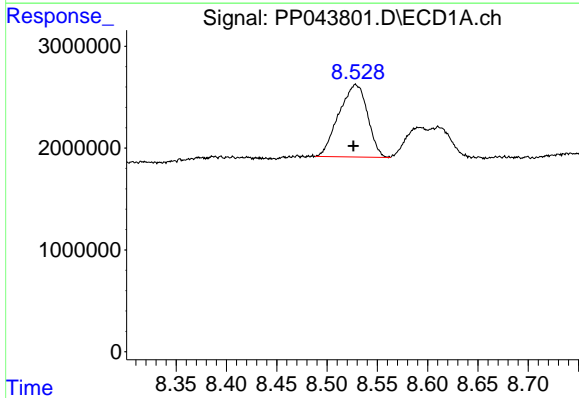
R.T.: 8.186 min  
 Delta R.T.: -0.007 min  
 Response: 25819774  
 Conc: 159.93 ng/ml

Instrument :  
 ECD\_P  
 ClientSampleId :



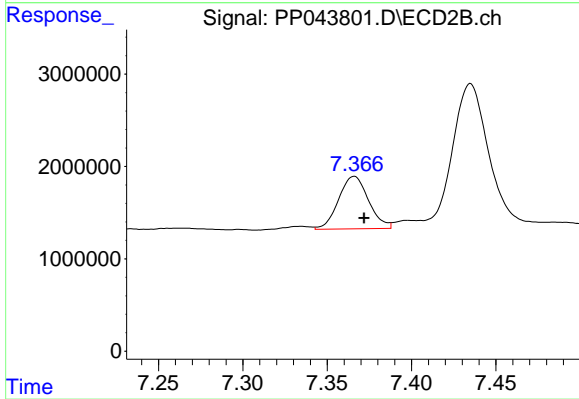
#37 AR-1262-2

R.T.: 6.790 min  
 Delta R.T.: -0.007 min  
 Response: 10845708  
 Conc: 106.33 ng/ml



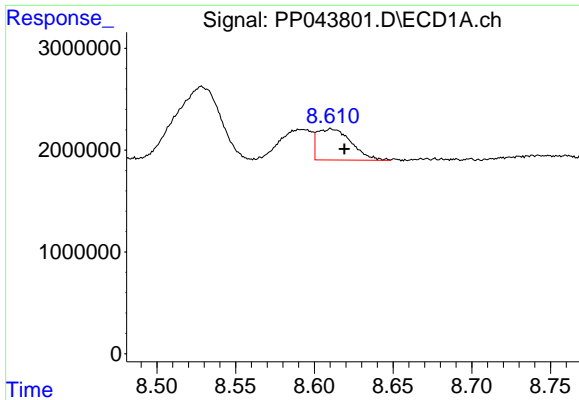
#38 AR-1262-3

R.T.: 8.528 min  
 Delta R.T.: 0.002 min  
 Response: 14080983  
 Conc: 128.71 ng/ml



#38 AR-1262-3

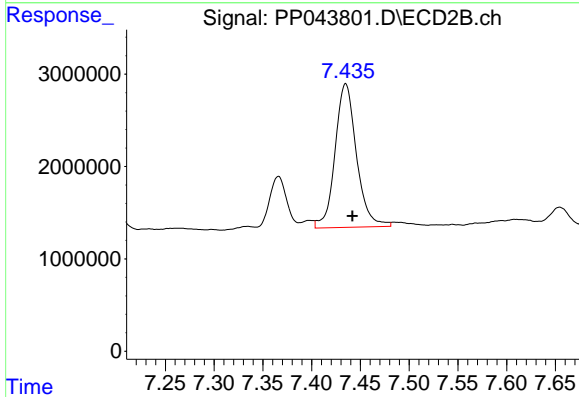
R.T.: 7.366 min  
 Delta R.T.: -0.006 min  
 Response: 7027927  
 Conc: 82.46 ng/ml



#39 AR-1262-4

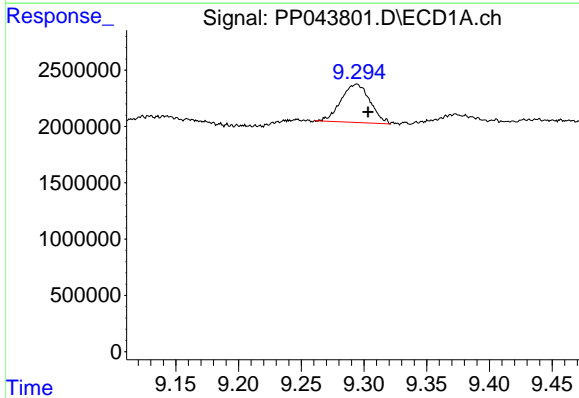
R.T.: 8.610 min  
 Delta R.T.: -0.009 min  
 Response: 4603447  
 Conc: 95.99 ng/ml

Instrument :  
 ECD\_P  
 ClientSampleId :



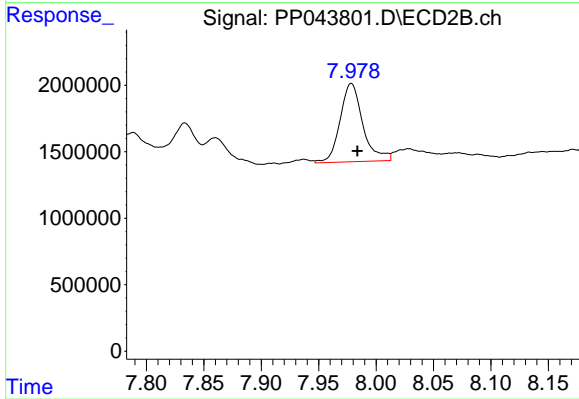
#39 AR-1262-4

R.T.: 7.435 min  
 Delta R.T.: -0.007 min  
 Response: 23763115  
 Conc: 153.00 ng/ml



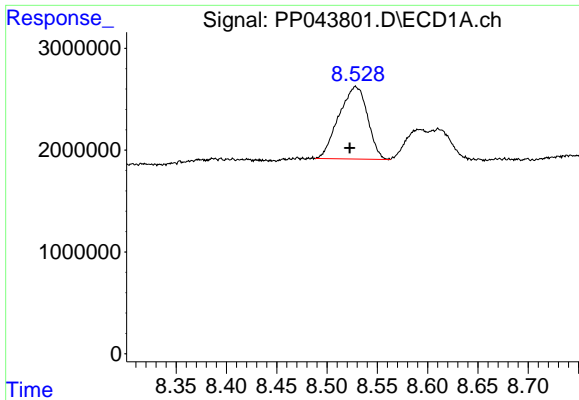
#40 AR-1262-5

R.T.: 9.294 min  
 Delta R.T.: -0.009 min  
 Response: 5457668  
 Conc: 98.00 ng/ml



#40 AR-1262-5

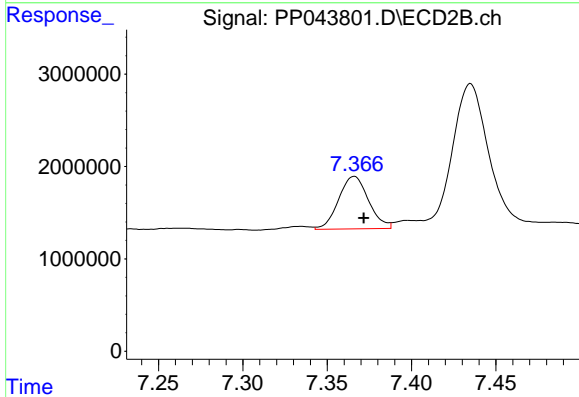
R.T.: 7.978 min  
 Delta R.T.: -0.005 min  
 Response: 8157068  
 Conc: 104.85 ng/ml



#41 AR-1268-1

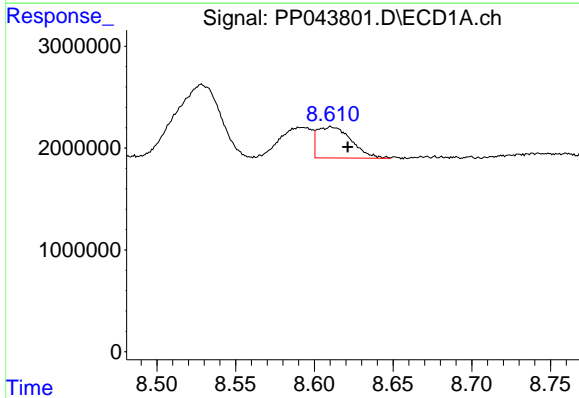
R.T.: 8.528 min  
 Delta R.T.: 0.006 min  
 Response: 14080983  
 Conc: 72.23 ng/ml

Instrument :  
 ECD\_P  
 ClientSampleId :



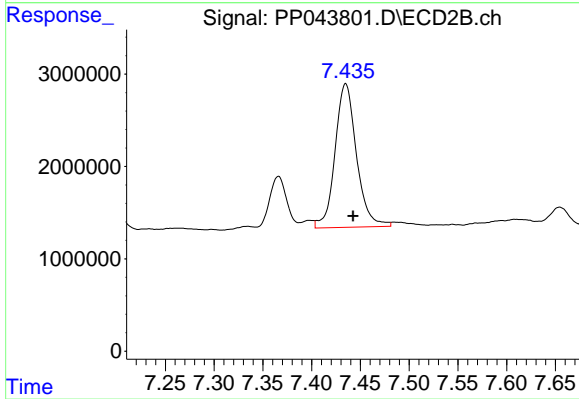
#41 AR-1268-1

R.T.: 7.366 min  
 Delta R.T.: -0.006 min  
 Response: 7027927  
 Conc: 27.74 ng/ml



#42 AR-1268-2

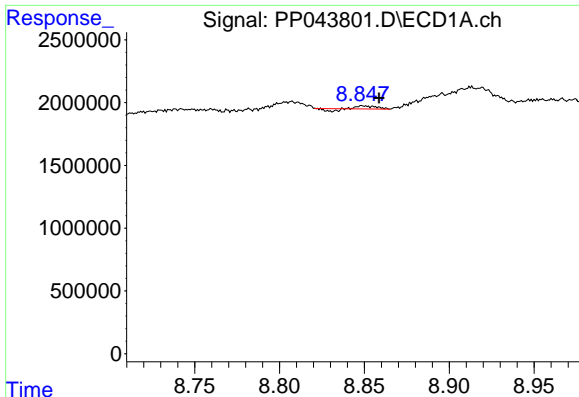
R.T.: 8.610 min  
 Delta R.T.: -0.011 min  
 Response: 4603447  
 Conc: 26.30 ng/ml



#42 AR-1268-2

R.T.: 7.435 min  
 Delta R.T.: -0.008 min  
 Response: 23763115  
 Conc: 105.16 ng/ml

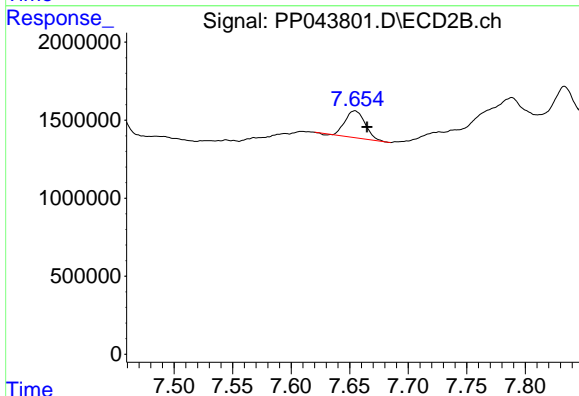




#43 AR-1268-3

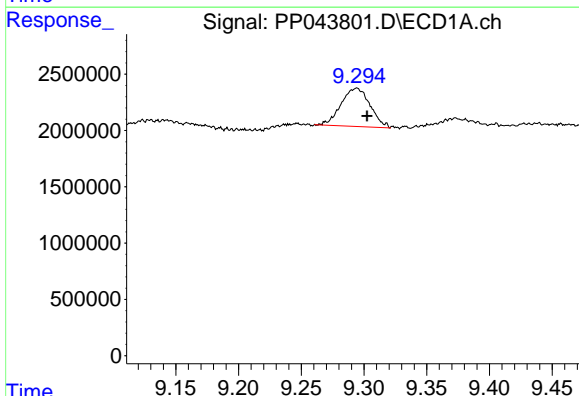
R.T.: 8.848 min  
 Delta R.T.: -0.010 min  
 Response: 96459  
 Conc: 0.62 ng/ml

Instrument :  
 ECD\_P  
 ClientSampleId :



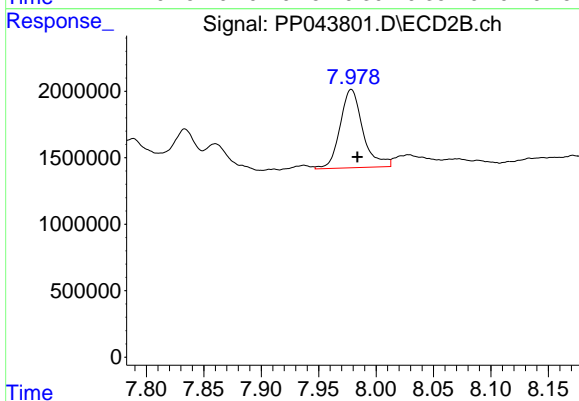
#43 AR-1268-3

R.T.: 7.654 min  
 Delta R.T.: -0.010 min  
 Response: 2030881  
 Conc: 10.43 ng/ml



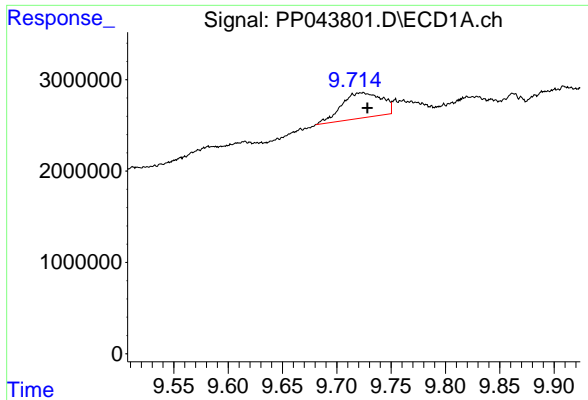
#44 AR-1268-4

R.T.: 9.294 min  
 Delta R.T.: -0.008 min  
 Response: 5457668  
 Conc: 87.22 ng/ml



#44 AR-1268-4

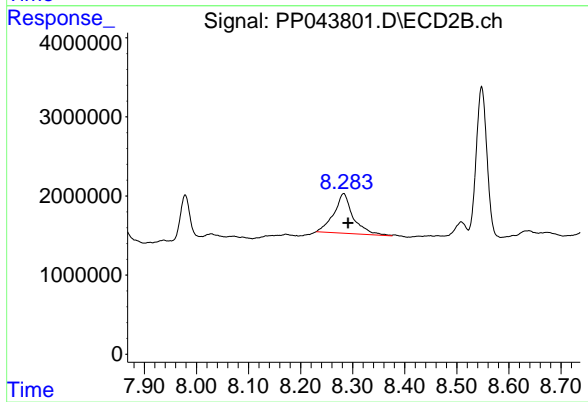
R.T.: 7.978 min  
 Delta R.T.: -0.005 min  
 Response: 8157068  
 Conc: 90.71 ng/ml



#45 AR-1268-5

R.T.: 9.725 min  
Delta R.T.: -0.004 min  
Response: 7093867  
Conc: 15.61 ng/ml

Instrument :  
ECD\_P  
ClientSampleId :



#45 AR-1268-5

R.T.: 8.283 min  
Delta R.T.: -0.008 min  
Response: 12911464  
Conc: 21.49 ng/ml