

Data Path : Z:\pestpcbsrv\HPCHEM1\ECD_P\Data\PP021822\
 Data File : PP043831.D
 Signal(s) : Signal #1: ECD1A.ch Signal #2: ECD2B.ch
 Acq On : 18 Feb 2022 15:32
 Operator : YP\AJ
 Sample : N1595-01
 Misc :
 ALS Vial : 19 Sample Multiplier: 1

Instrument :
 ECD_P
 ClientSampleId :

Integration File signal 1: autoint1.e
 Integration File signal 2: autoint2.e
 Quant Time: Feb 18 23:51:22 2022
 Quant Method : Z:\pestpcbsrv\HPCHEM1\ECD_P\methods\PP021022.M
 Quant Title : GC EXTRACTABLES
 QLast Update : Fri Feb 11 04:48:05 2022
 Response via : Initial Calibration
 Integrator: ChemStation

Volume Inj. : 2 µl
 Signal #1 Phase : ZB-MR1 Signal #2 Phase: ZB-MR2
 Signal #1 Info : 30Mx0.32mmx 0.50µ Signal #2 Info : 30M x 0.32mm x 0.25µm

Compound	RT#1	RT#2	Resp#1	Resp#2	ng/ml	ng/ml

System Monitoring Compounds						
1) SA Tetrachlo...	3.922	3.183	30378976	29697596	13.740	15.811
2) SA Decachlor...	10.063	8.550	26410148	29536429	22.233	18.206
Target Compounds						
3) L1 AR-1016-1	5.153f	4.331	432536	156252	5.961	2.550 #
4) L1 AR-1016-2	5.198	4.347	231698	370551	2.197	4.386 #
5) L1 AR-1016-3	5.253	4.531	436180	177682	6.624	3.803 #
6) L1 AR-1016-4	5.343f	4.580	1004168	871902	18.517	23.331 #
7) L1 AR-1016-5	5.690	4.804	840274	471179	15.997	10.314 #
8) L2 AR-1221-1	4.140	3.388	3243694	2148	127.407	0.090 #
9) L2 AR-1221-2	4.247	3.503	594021	1392463	30.941	77.102 #
10) L2 AR-1221-3	4.327	3.578	116547	208596	2.029	4.044 #
11) L3 AR-1232-1	4.327	3.578	116547	208596	2.401	4.848 #
12) L3 AR-1232-2	4.865f	4.347	530631	370551	22.392	10.380 #
13) L3 AR-1232-3	5.198	4.531	231698	177682	5.382	9.087 #
14) L3 AR-1232-4	5.343f	4.623	1004168	402267	46.003	23.263 #
15) L3 AR-1232-5	5.472	4.804	1337869	471179	82.947	25.084 #
16) L4 AR-1242-1	5.153f	4.331	432536	156252	7.697	3.205 #
17) L4 AR-1242-2	5.198	4.347	231698	370551	2.801	5.503 #
18) L4 AR-1242-3	5.253	4.531	436180	177682	8.427	4.733 #
19) L4 AR-1242-4	5.343f	4.623	1004168	402267	23.510	11.140 #
20) L4 AR-1242-5	6.172	5.181	1186302	2969342	27.472	68.978 #
21) L5 AR-1248-1	5.153f	4.331	432536	156252	10.550	4.195 #
22) L5 AR-1248-2	5.472	4.580	1337869	871902	23.549	17.823
23) L5 AR-1248-3	5.690	4.623	840274	402267	12.595	7.839 #
24) L5 AR-1248-4	6.130	4.804	946671	471179	13.550	8.037 #
25) L5 AR-1248-5	6.172	5.224	1186302	595613	17.160	10.395 #
26) L6 AR-1254-1	6.101	5.181	2486669	2969342	32.911	34.000
27) L6 AR-1254-2	6.340	5.342	3556325	3380778	31.705	44.322 #
28) L6 AR-1254-3	6.739	5.773	3647568	5538968	31.523	45.195 #
29) L6 AR-1254-4	7.054	6.022	3032777	2884084	37.989	36.542
30) L6 AR-1254-5	7.513	6.473	9952750	9004097	116.049	77.860 #
31) L7 AR-1260-1	6.920	5.914	3707338	4919365	44.271	61.515 #
32) L7 AR-1260-2	7.203	6.120	5634189	5521957	62.242	56.547
33) L7 AR-1260-3	7.598	6.281	2541699	4937920	35.063	54.090 #
34) L7 AR-1260-4	7.843	6.794	5405814	2849311	62.963	35.216 #
35) L7 AR-1260-5	8.188	7.061	7101583	7233247	45.815	39.127
36) L8 AR-1262-1	7.598	6.514	2541699	3398919	25.741	30.918
37) L8 AR-1262-2	8.188	6.794	7101583	2849311	43.989	27.933 #
38) L8 AR-1262-3	8.532	7.368	3906520	1441670	35.709	16.916 #
39) L8 AR-1262-4	8.592f	7.437	2141520	5385392	44.655	34.674
40) L8 AR-1262-5	9.295	7.980	1183880	1875359	21.259	24.107
41) L9 AR-1268-1	8.532	7.368	3906520	1441670	20.040	5.690 #

Data Path : Z:\pestpcbsrv\HPCHEM1\ECD_P\Data\PP021822\
 Data File : PP043831.D
 Signal(s) : Signal #1: ECD1A.ch Signal #2: ECD2B.ch
 Acq On : 18 Feb 2022 15:32
 Operator : YP\AJ
 Sample : N1595-01
 Misc :
 ALS Vial : 19 Sample Multiplier: 1

Instrument :
 ECD_P
 ClientSampleId :

Integration File signal 1: autoint1.e
 Integration File signal 2: autoint2.e
 Quant Time: Feb 18 23:51:22 2022
 Quant Method : Z:\pestpcbsrv\HPCHEM1\ECD_P\methods\PP021022.M
 Quant Title : GC EXTRACTABLES
 QLast Update : Fri Feb 11 04:48:05 2022
 Response via : Initial Calibration
 Integrator: ChemStation

Volume Inj. : 2 µl
 Signal #1 Phase : ZB-MR1 Signal #2 Phase: ZB-MR2
 Signal #1 Info : 30Mx0.32mmx 0.50µ Signal #2 Info : 30M x 0.32mm x 0.25µm

	Compound	RT#1	RT#2	Resp#1	Resp#2	ng/ml	ng/ml
42)	L9 AR-1268-2	8.592f	7.437	2141520	5385392	12.234	23.833 #
43)	L9 AR-1268-3	0.000	7.661	0	159442	N.D.	0.819 #
44)	L9 AR-1268-4	9.295	7.980	1183880	1875359	18.921	20.854
45)	L9 AR-1268-5	9.718	8.287	624364	735468	1.374	1.224

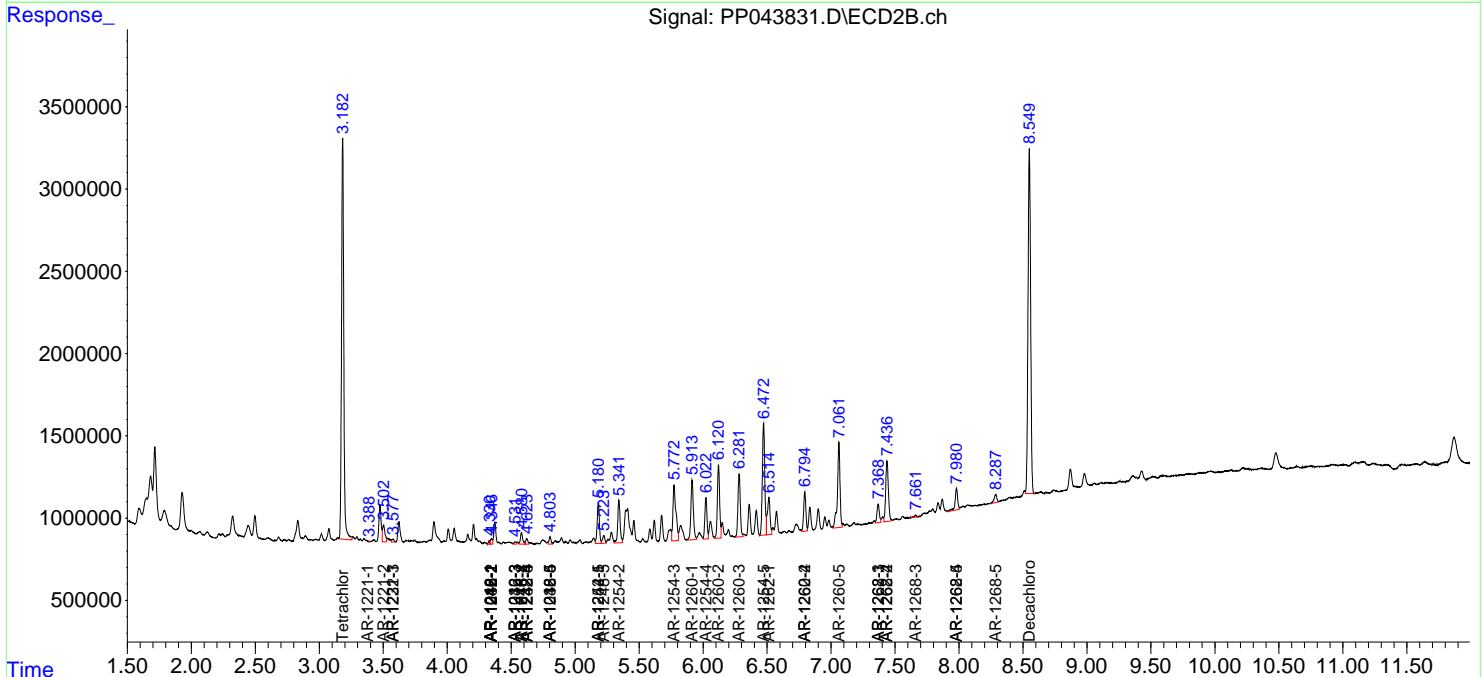
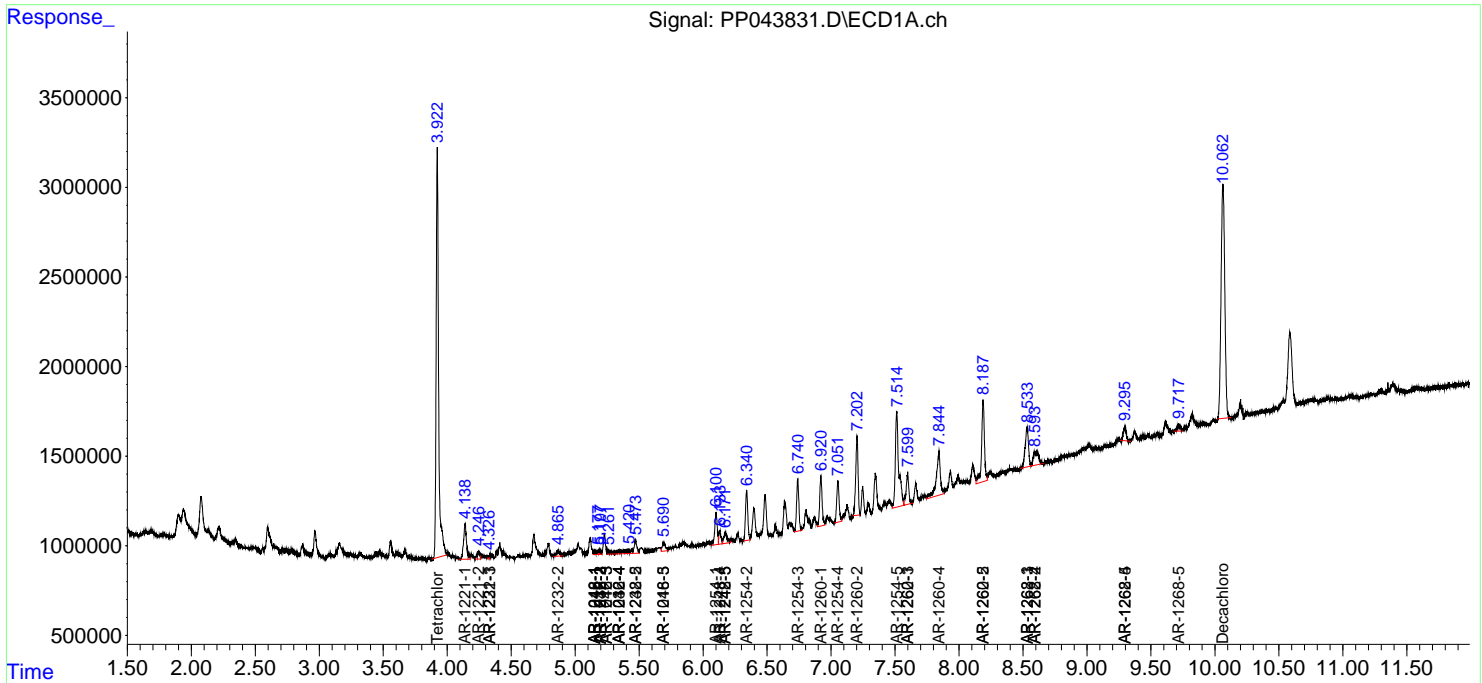
(f)=RT Delta > 1/2 Window (#)=Amounts differ by > 25% (m)=manual int.

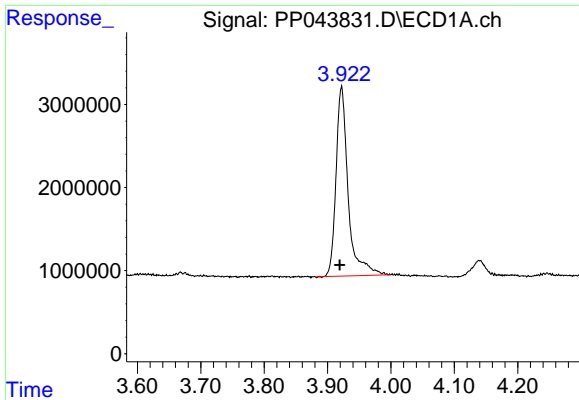
Data Path : Z:\pestpcbsrv\HPCHEM1\ECD_P\Data\PP021822\
 Data File : PP043831.D
 Signal(s) : Signal #1: ECD1A.ch Signal #2: ECD2B.ch
 Acq On : 18 Feb 2022 15:32
 Operator : YP\AJ
 Sample : N1595-01
 Misc :
 ALS Vial : 19 Sample Multiplier: 1

Instrument :
 ECD_P
 ClientSampleId :

Integration File signal 1: autoint1.e
 Integration File signal 2: autoint2.e
 Quant Time: Feb 18 23:51:22 2022
 Quant Method : Z:\pestpcbsrv\HPCHEM1\ECD_P\methods\PP021022.M
 Quant Title : GC EXTRACTABLES
 QLast Update : Fri Feb 11 04:48:05 2022
 Response via : Initial Calibration
 Integrator: ChemStation

Volume Inj. : 2 µl
 Signal #1 Phase : ZB-MR1 Signal #2 Phase: ZB-MR2
 Signal #1 Info : 30Mx0.32mmx 0.50µ Signal #2 Info : 30M x 0.32mm x 0.25µm

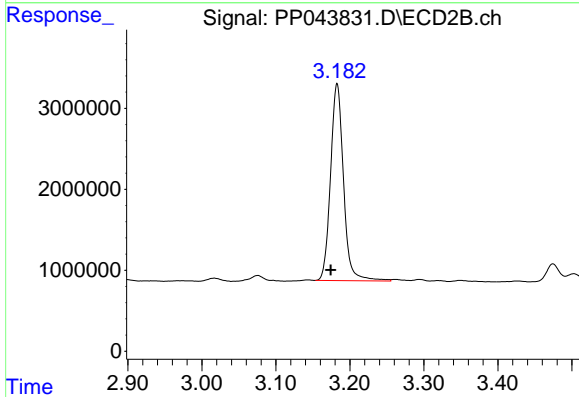




#1 Tetrachloro-m-xylene

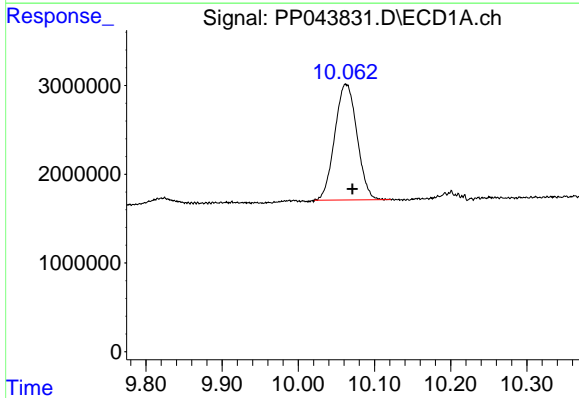
R.T.: 3.922 min
 Delta R.T.: 0.003 min
 Response: 30378976
 Conc: 13.74 ng/ml

Instrument :
 ECD_P
 ClientSampleId :



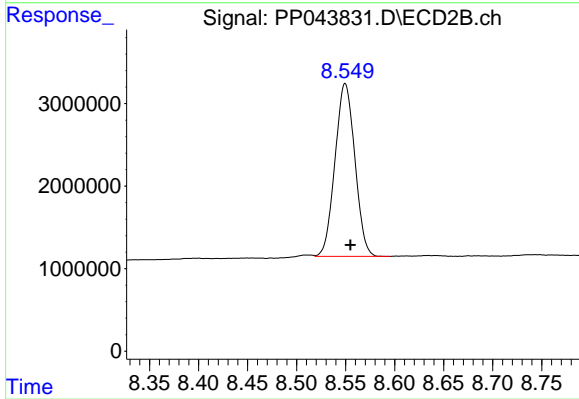
#1 Tetrachloro-m-xylene

R.T.: 3.183 min
 Delta R.T.: 0.009 min
 Response: 29697596
 Conc: 15.81 ng/ml



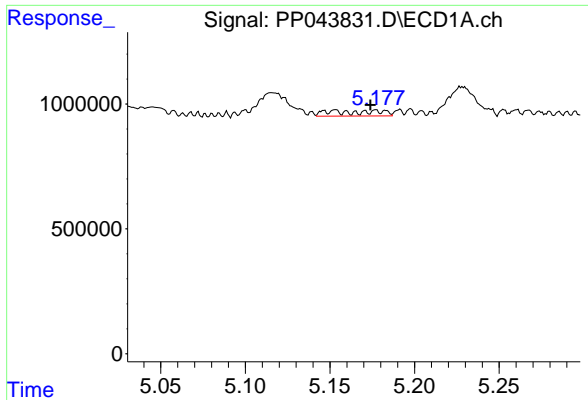
#2 Decachlorobiphenyl

R.T.: 10.063 min
 Delta R.T.: -0.009 min
 Response: 26410148
 Conc: 22.23 ng/ml



#2 Decachlorobiphenyl

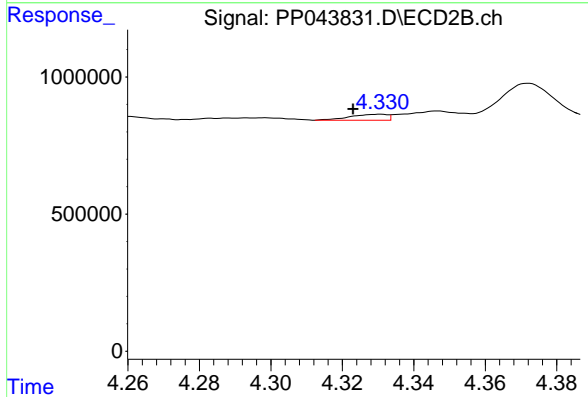
R.T.: 8.550 min
 Delta R.T.: -0.005 min
 Response: 29536429
 Conc: 18.21 ng/ml



#3 AR-1016-1

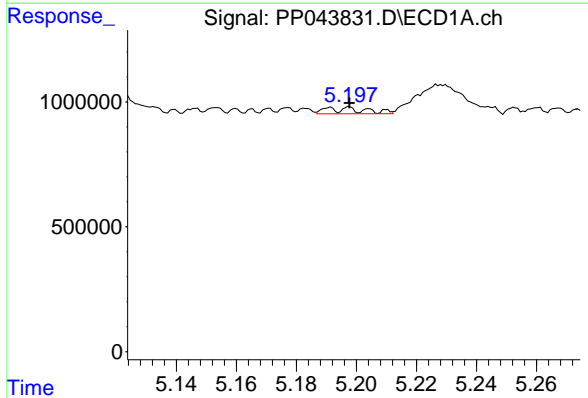
R.T.: 5.153 min
 Delta R.T.: -0.021 min
 Response: 432536
 Conc: 5.96 ng/ml

Instrument :
 ECD_P
 ClientSampleId :



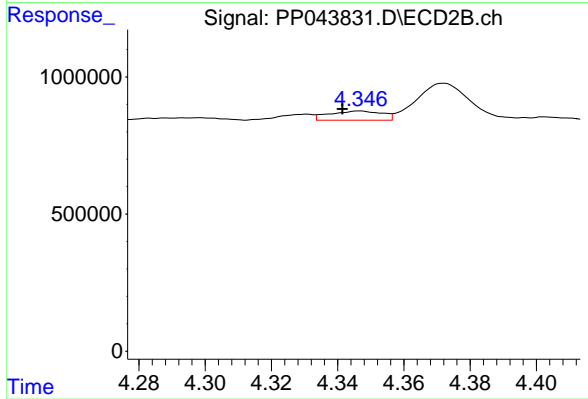
#3 AR-1016-1

R.T.: 4.331 min
 Delta R.T.: 0.008 min
 Response: 156252
 Conc: 2.55 ng/ml



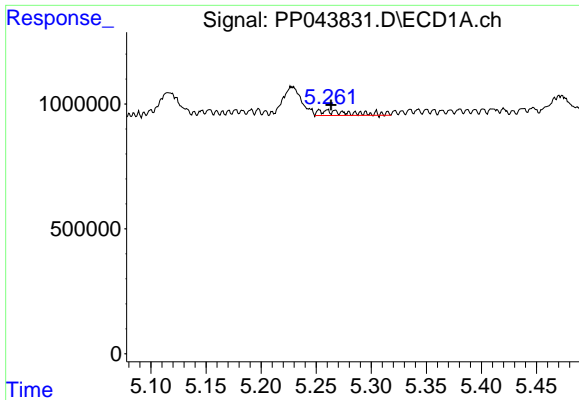
#4 AR-1016-2

R.T.: 5.198 min
 Delta R.T.: 0.000 min
 Response: 231698
 Conc: 2.20 ng/ml



#4 AR-1016-2

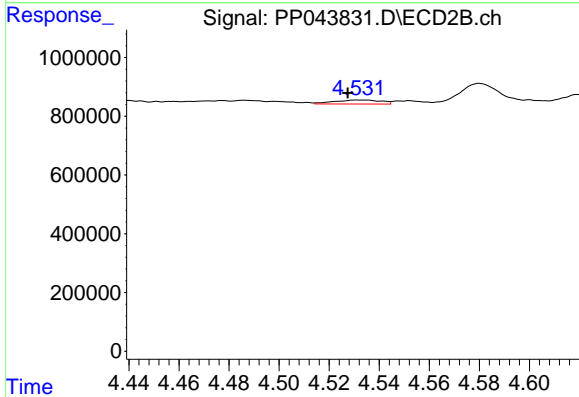
R.T.: 4.347 min
 Delta R.T.: 0.005 min
 Response: 370551
 Conc: 4.39 ng/ml



#5 AR-1016-3

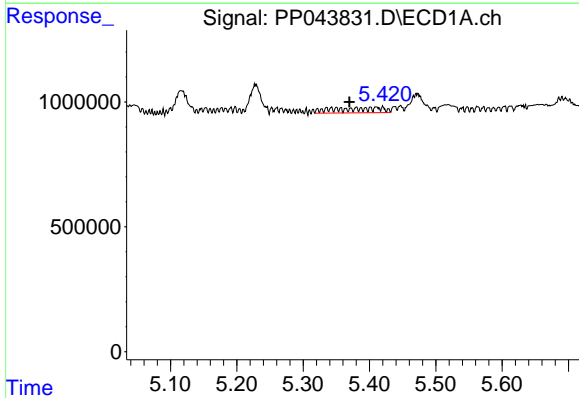
R.T.: 5.253 min
 Delta R.T.: -0.011 min
 Response: 436180
 Conc: 6.62 ng/ml

Instrument :
 ECD_P
 ClientSampleId :



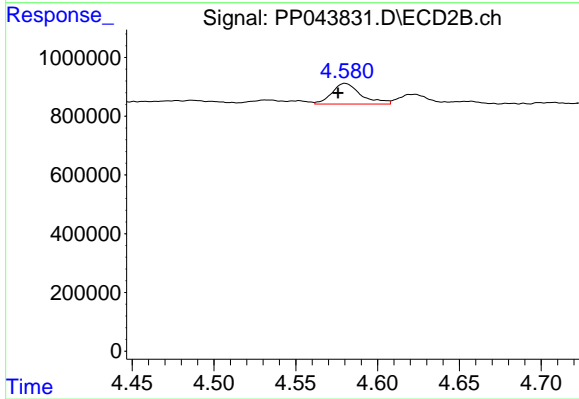
#5 AR-1016-3

R.T.: 4.531 min
 Delta R.T.: 0.004 min
 Response: 177682
 Conc: 3.80 ng/ml



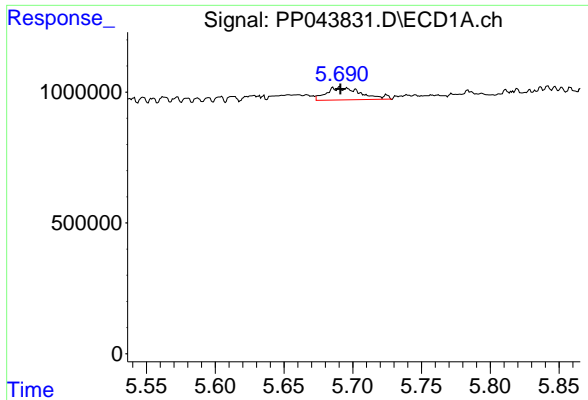
#6 AR-1016-4

R.T.: 5.343 min
 Delta R.T.: -0.027 min
 Response: 1004168
 Conc: 18.52 ng/ml



#6 AR-1016-4

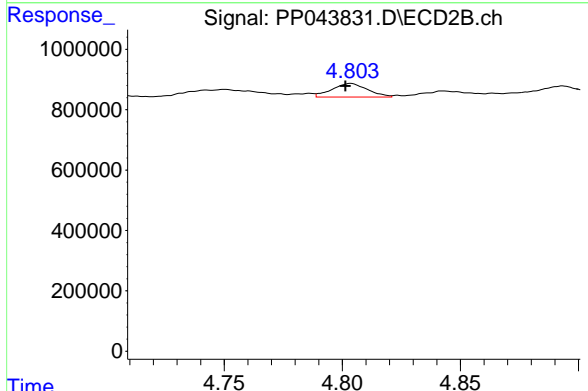
R.T.: 4.580 min
 Delta R.T.: 0.004 min
 Response: 871902
 Conc: 23.33 ng/ml



#7 AR-1016-5

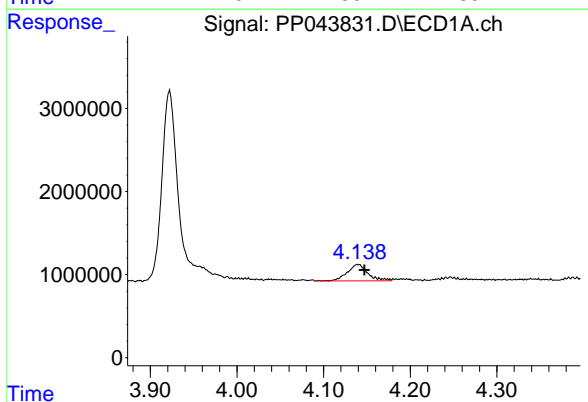
R.T.: 5.690 min
 Delta R.T.: 0.000 min
 Response: 840274
 Conc: 16.00 ng/ml

Instrument :
 ECD_P
 ClientSampleId :



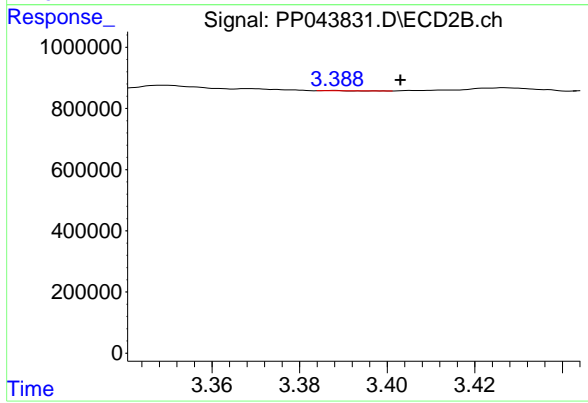
#7 AR-1016-5

R.T.: 4.804 min
 Delta R.T.: 0.002 min
 Response: 471179
 Conc: 10.31 ng/ml



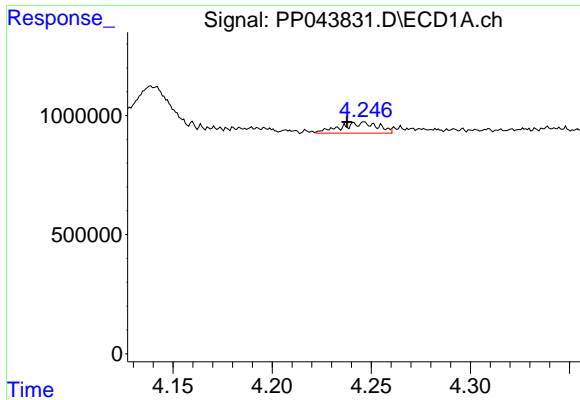
#8 AR-1221-1

R.T.: 4.140 min
 Delta R.T.: -0.008 min
 Response: 3243694
 Conc: 127.41 ng/ml



#8 AR-1221-1

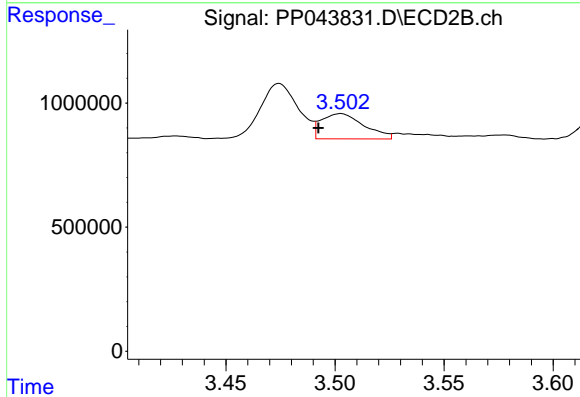
R.T.: 3.388 min
 Delta R.T.: -0.015 min
 Response: 2148
 Conc: 0.09 ng/ml



#9 AR-1221-2

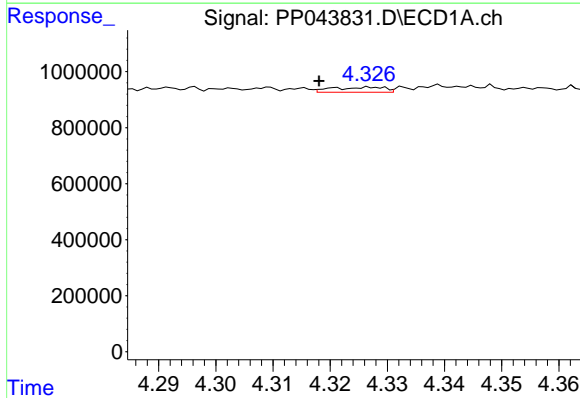
R.T.: 4.247 min
 Delta R.T.: 0.009 min
 Response: 594021
 Conc: 30.94 ng/ml

Instrument :
 ECD_P
 ClientSampleId :



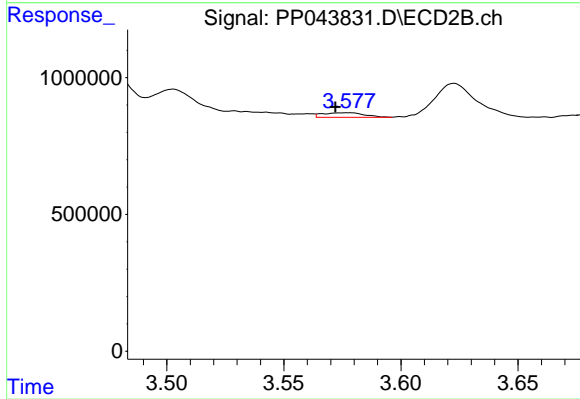
#9 AR-1221-2

R.T.: 3.503 min
 Delta R.T.: 0.010 min
 Response: 1392463
 Conc: 77.10 ng/ml



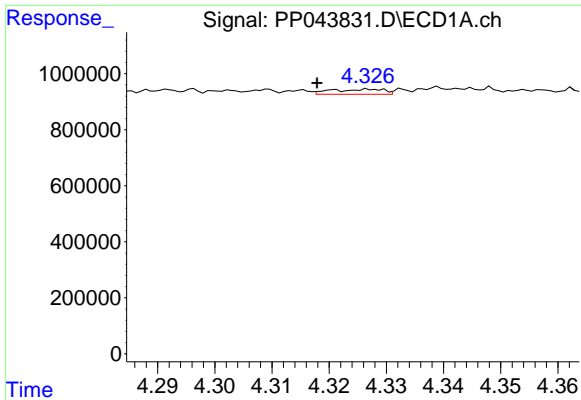
#10 AR-1221-3

R.T.: 4.327 min
 Delta R.T.: 0.009 min
 Response: 116547
 Conc: 2.03 ng/ml



#10 AR-1221-3

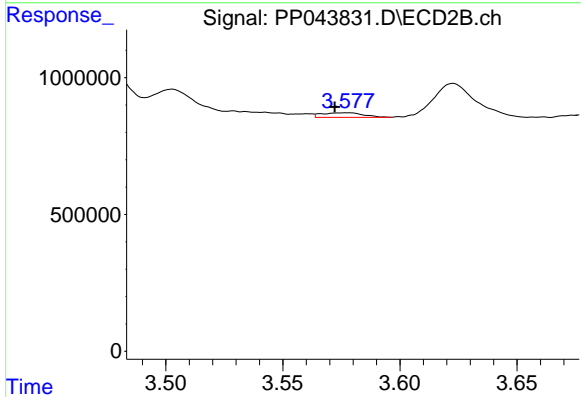
R.T.: 3.578 min
 Delta R.T.: 0.006 min
 Response: 208596
 Conc: 4.04 ng/ml



#11 AR-1232-1

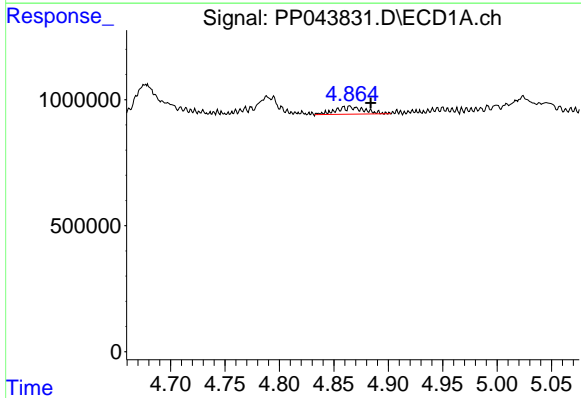
R.T.: 4.327 min
 Delta R.T.: 0.010 min
 Response: 116547
 Conc: 2.40 ng/ml

Instrument :
 ECD_P
 ClientSampleId :



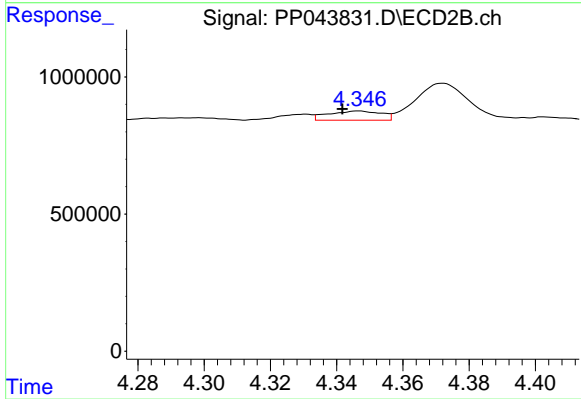
#11 AR-1232-1

R.T.: 3.578 min
 Delta R.T.: 0.006 min
 Response: 208596
 Conc: 4.85 ng/ml



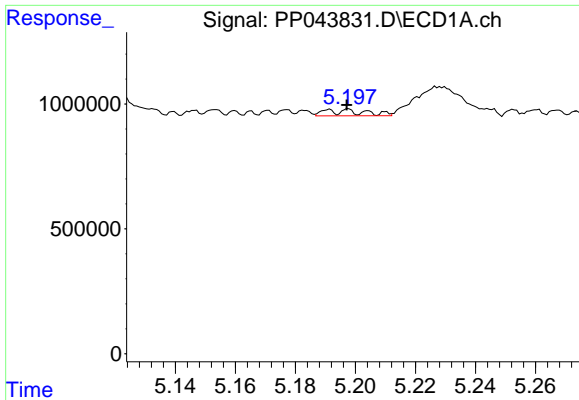
#12 AR-1232-2

R.T.: 4.865 min
 Delta R.T.: -0.019 min
 Response: 530631
 Conc: 22.39 ng/ml



#12 AR-1232-2

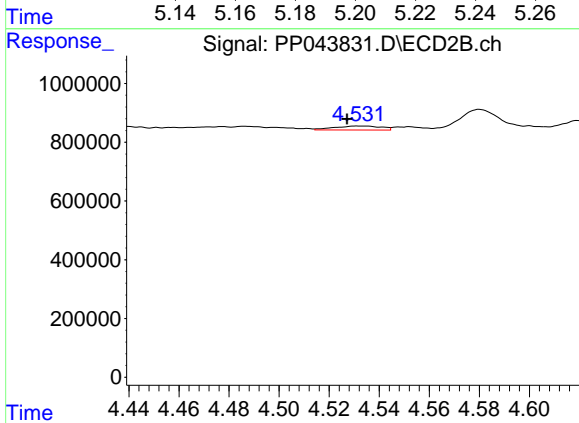
R.T.: 4.347 min
 Delta R.T.: 0.005 min
 Response: 370551
 Conc: 10.38 ng/ml



#13 AR-1232-3

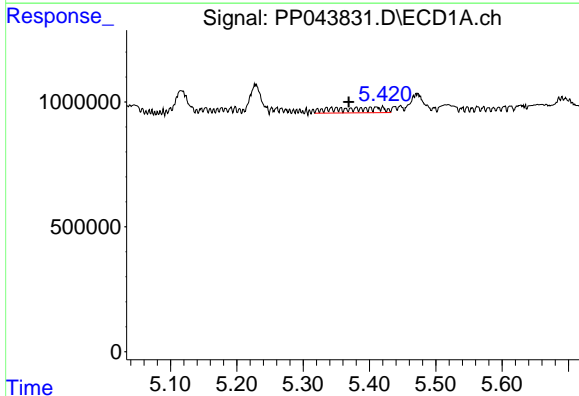
R.T.: 5.198 min
 Delta R.T.: 0.000 min
 Response: 231698
 Conc: 5.38 ng/ml

Instrument :
 ECD_P
 ClientSampleId :



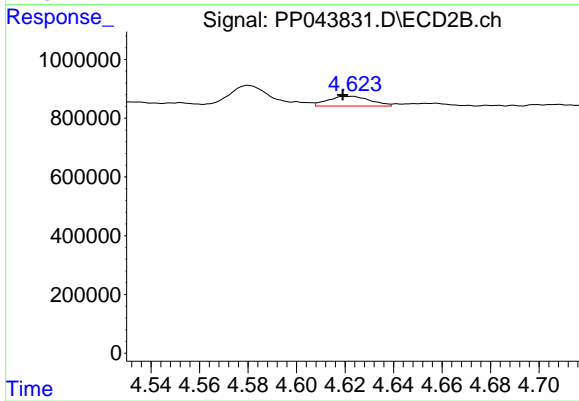
#13 AR-1232-3

R.T.: 4.531 min
 Delta R.T.: 0.004 min
 Response: 177682
 Conc: 9.09 ng/ml



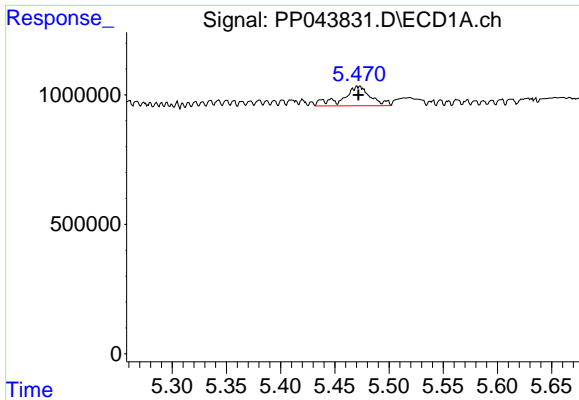
#14 AR-1232-4

R.T.: 5.343 min
 Delta R.T.: -0.027 min
 Response: 1004168
 Conc: 46.00 ng/ml



#14 AR-1232-4

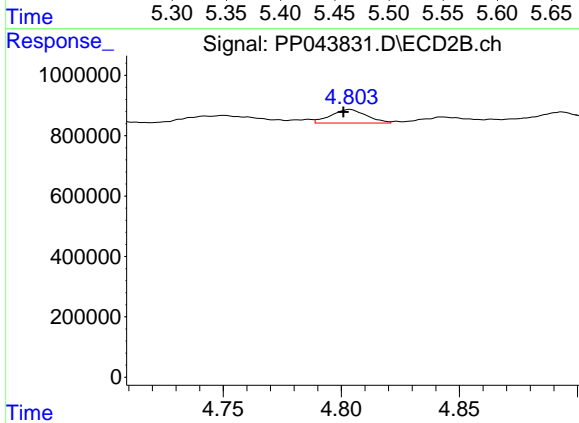
R.T.: 4.623 min
 Delta R.T.: 0.004 min
 Response: 402267
 Conc: 23.26 ng/ml



#15 AR-1232-5

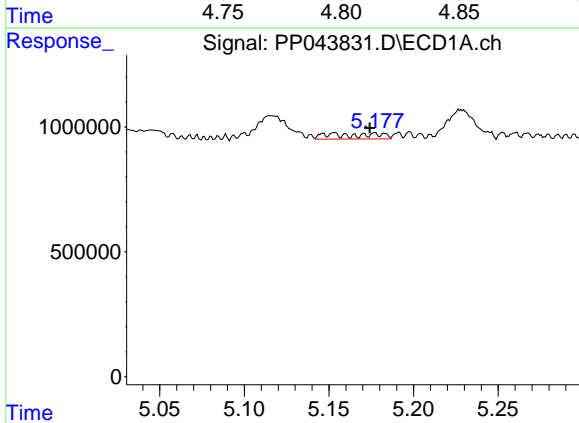
R.T.: 5.472 min
 Delta R.T.: 0.000 min
 Response: 1337869
 Conc: 82.95 ng/ml

Instrument :
 ECD_P
 ClientSampleId :



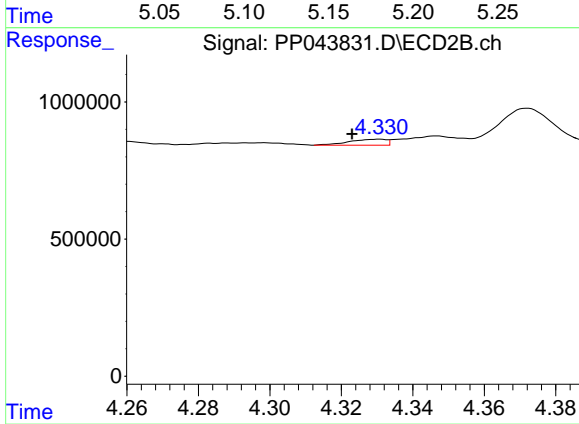
#15 AR-1232-5

R.T.: 4.804 min
 Delta R.T.: 0.003 min
 Response: 471179
 Conc: 25.08 ng/ml



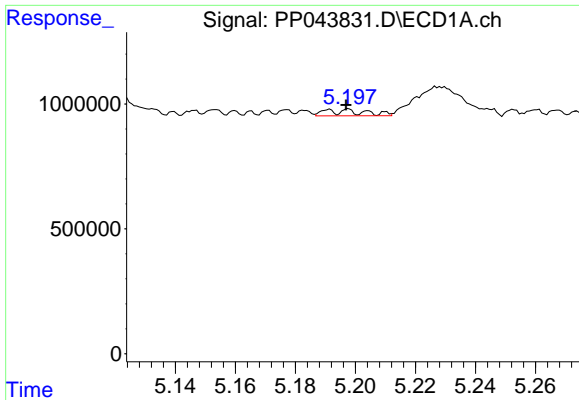
#16 AR-1242-1

R.T.: 5.153 min
 Delta R.T.: -0.021 min
 Response: 432536
 Conc: 7.70 ng/ml



#16 AR-1242-1

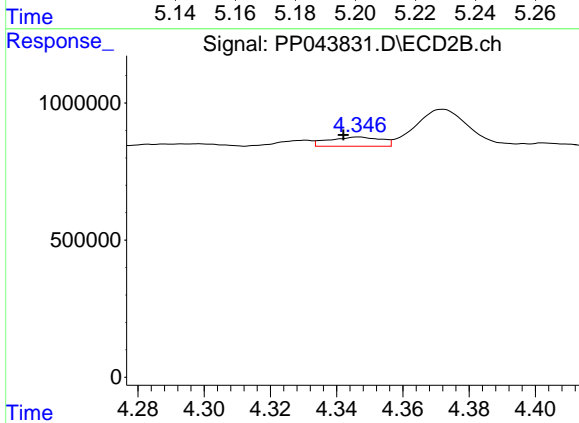
R.T.: 4.331 min
 Delta R.T.: 0.008 min
 Response: 156252
 Conc: 3.21 ng/ml



#17 AR-1242-2

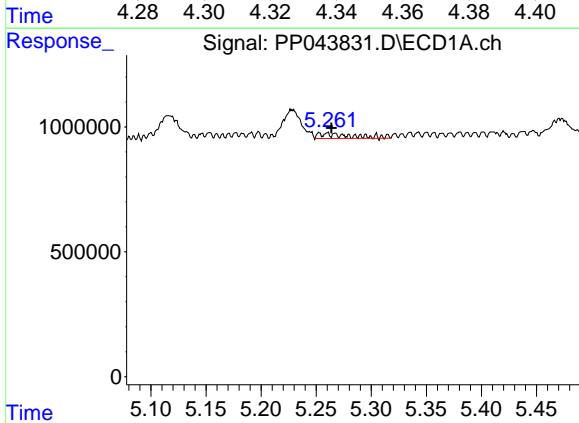
R.T.: 5.198 min
 Delta R.T.: 0.000 min
 Response: 231698
 Conc: 2.80 ng/ml

Instrument :
 ECD_P
 ClientSampleId :



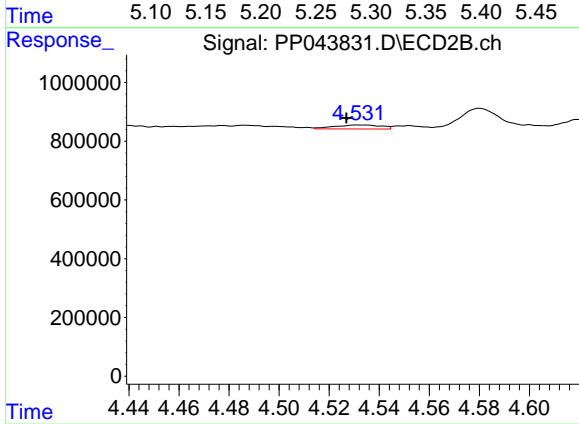
#17 AR-1242-2

R.T.: 4.347 min
 Delta R.T.: 0.005 min
 Response: 370551
 Conc: 5.50 ng/ml



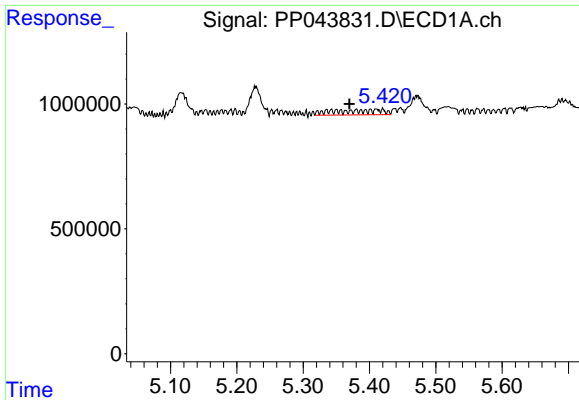
#18 AR-1242-3

R.T.: 5.253 min
 Delta R.T.: -0.011 min
 Response: 436180
 Conc: 8.43 ng/ml



#18 AR-1242-3

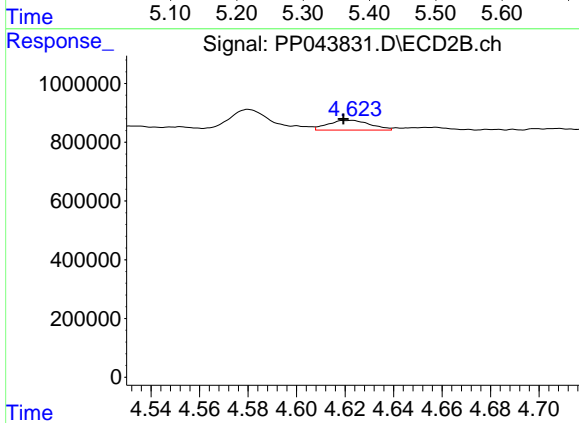
R.T.: 4.531 min
 Delta R.T.: 0.004 min
 Response: 177682
 Conc: 4.73 ng/ml



#19 AR-1242-4

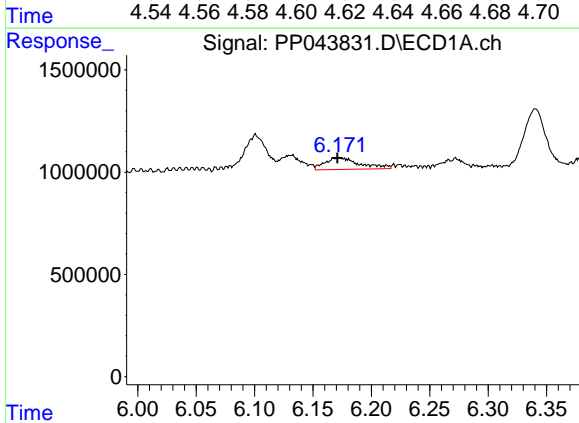
R.T.: 5.343 min
 Delta R.T.: -0.027 min
 Response: 1004168
 Conc: 23.51 ng/ml

Instrument :
 ECD_P
 ClientSampleId :



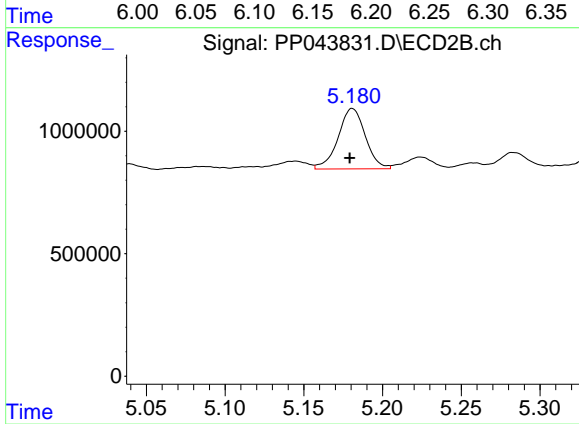
#19 AR-1242-4

R.T.: 4.623 min
 Delta R.T.: 0.004 min
 Response: 402267
 Conc: 11.14 ng/ml



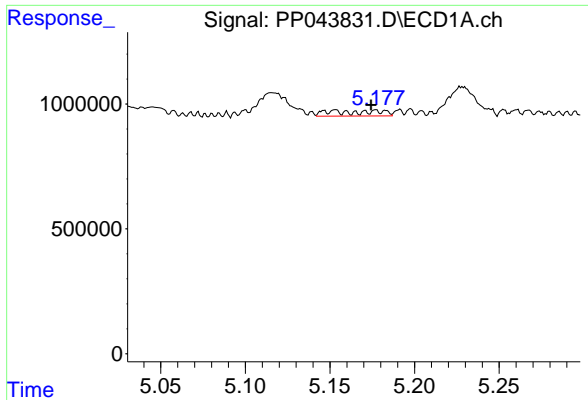
#20 AR-1242-5

R.T.: 6.172 min
 Delta R.T.: 0.001 min
 Response: 1186302
 Conc: 27.47 ng/ml



#20 AR-1242-5

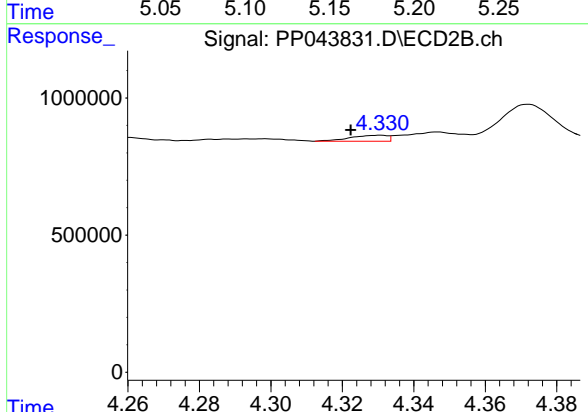
R.T.: 5.181 min
 Delta R.T.: 0.001 min
 Response: 2969342
 Conc: 68.98 ng/ml



#21 AR-1248-1

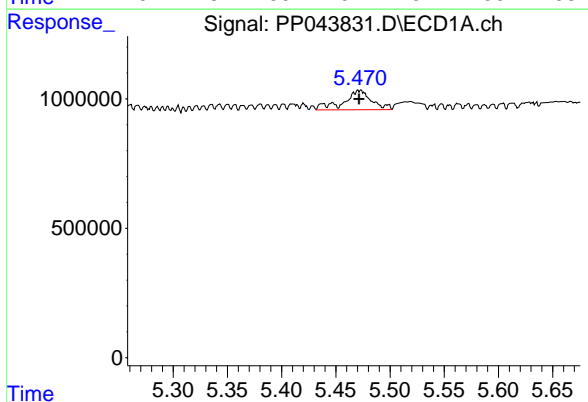
R.T.: 5.153 min
 Delta R.T.: -0.021 min
 Response: 432536
 Conc: 10.55 ng/ml

Instrument :
 ECD_P
 ClientSampleId :



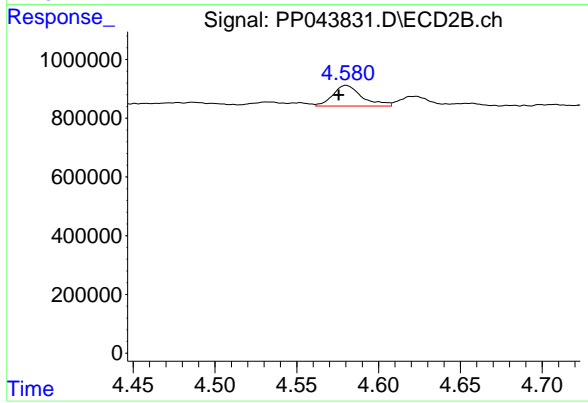
#21 AR-1248-1

R.T.: 4.331 min
 Delta R.T.: 0.008 min
 Response: 156252
 Conc: 4.19 ng/ml



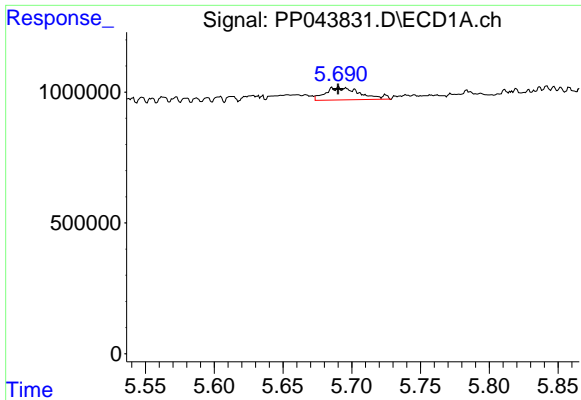
#22 AR-1248-2

R.T.: 5.472 min
 Delta R.T.: 0.000 min
 Response: 1337869
 Conc: 23.55 ng/ml



#22 AR-1248-2

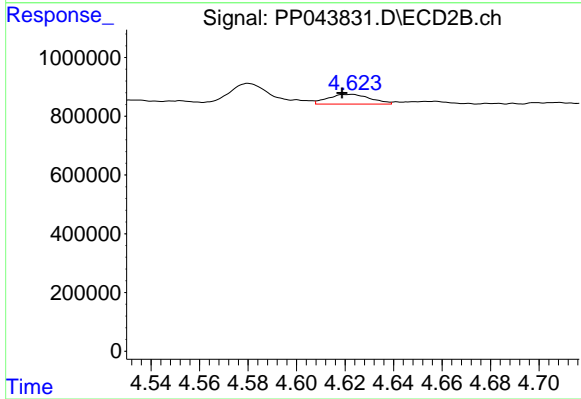
R.T.: 4.580 min
 Delta R.T.: 0.004 min
 Response: 871902
 Conc: 17.82 ng/ml



#23 AR-1248-3

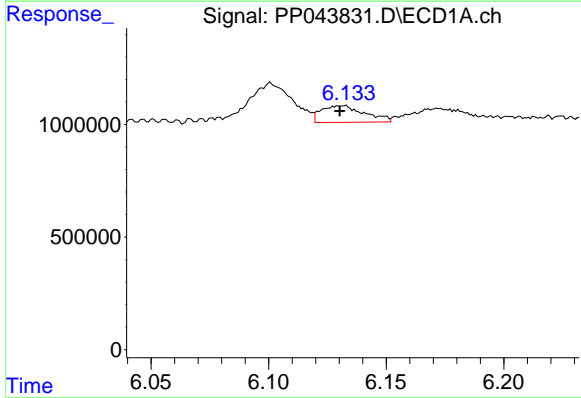
R.T.: 5.690 min
 Delta R.T.: 0.000 min
 Response: 840274
 Conc: 12.59 ng/ml

Instrument :
 ECD_P
 ClientSampleId :



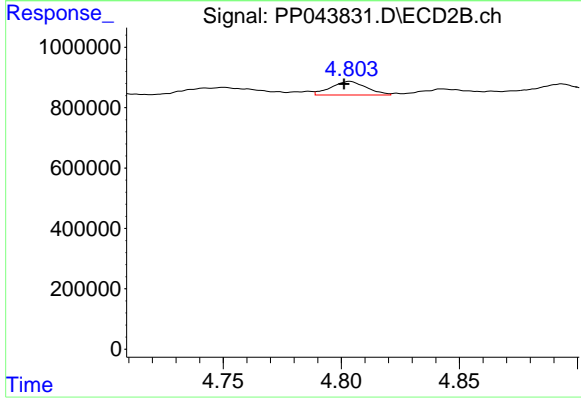
#23 AR-1248-3

R.T.: 4.623 min
 Delta R.T.: 0.004 min
 Response: 402267
 Conc: 7.84 ng/ml



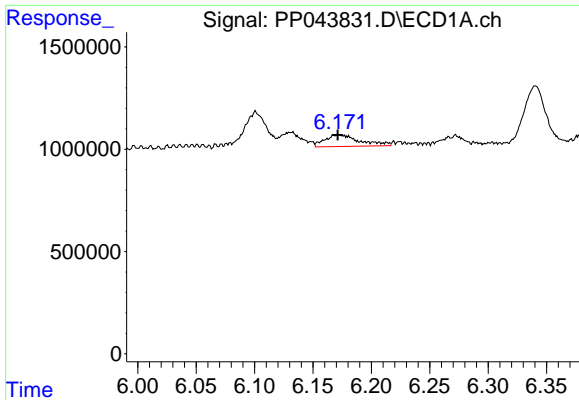
#24 AR-1248-4

R.T.: 6.130 min
 Delta R.T.: 0.000 min
 Response: 946671
 Conc: 13.55 ng/ml



#24 AR-1248-4

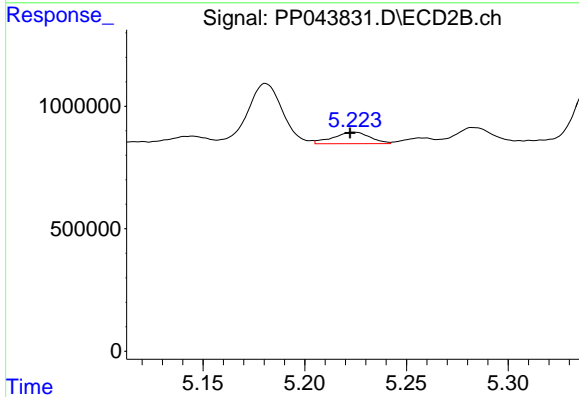
R.T.: 4.804 min
 Delta R.T.: 0.003 min
 Response: 471179
 Conc: 8.04 ng/ml



#25 AR-1248-5

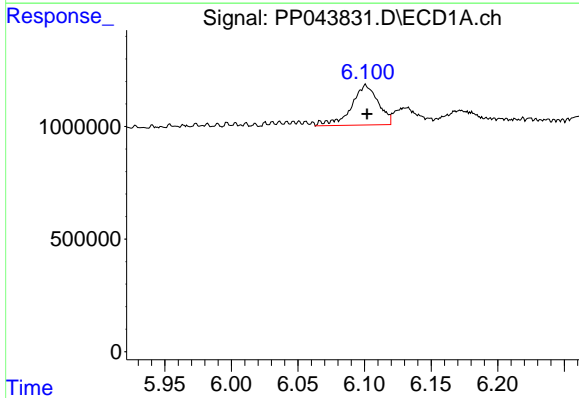
R.T.: 6.172 min
 Delta R.T.: 0.000 min
 Response: 1186302
 Conc: 17.16 ng/ml

Instrument :
 ECD_P
 ClientSampleId :



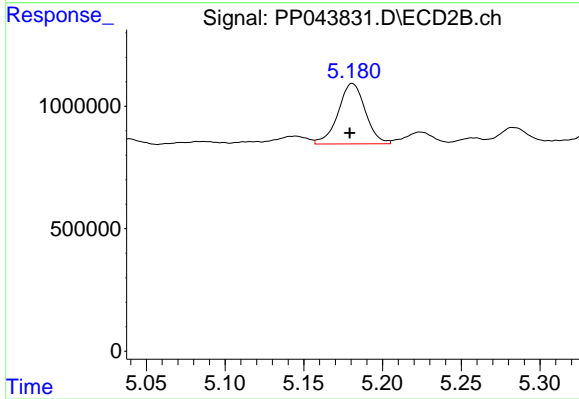
#25 AR-1248-5

R.T.: 5.224 min
 Delta R.T.: 0.002 min
 Response: 595613
 Conc: 10.40 ng/ml



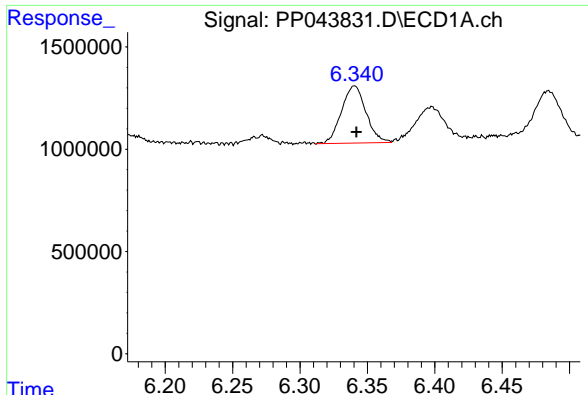
#26 AR-1254-1

R.T.: 6.101 min
 Delta R.T.: 0.000 min
 Response: 2486669
 Conc: 32.91 ng/ml



#26 AR-1254-1

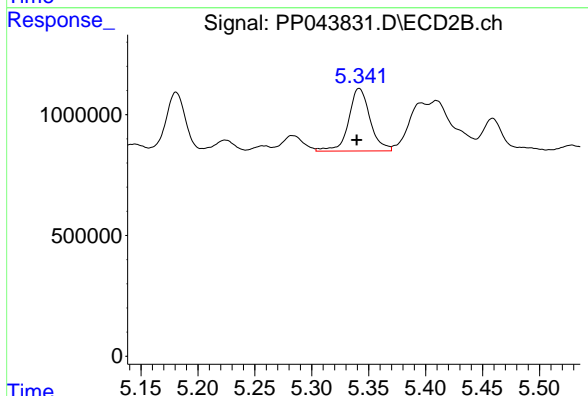
R.T.: 5.181 min
 Delta R.T.: 0.002 min
 Response: 2969342
 Conc: 34.00 ng/ml



#27 AR-1254-2

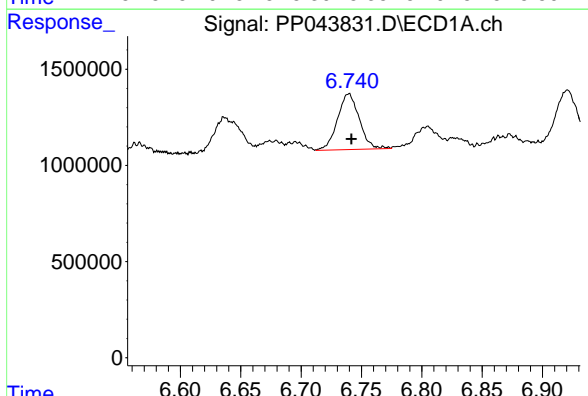
R.T.: 6.340 min
Delta R.T.: -0.002 min
Response: 3556325
Conc: 31.71 ng/ml

Instrument :
ECD_P
ClientSampleId :



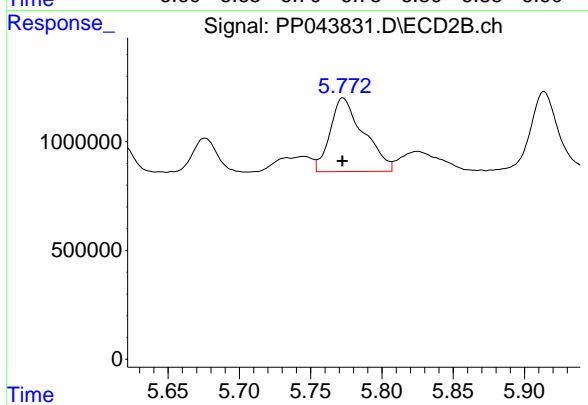
#27 AR-1254-2

R.T.: 5.342 min
Delta R.T.: 0.002 min
Response: 3380778
Conc: 44.32 ng/ml



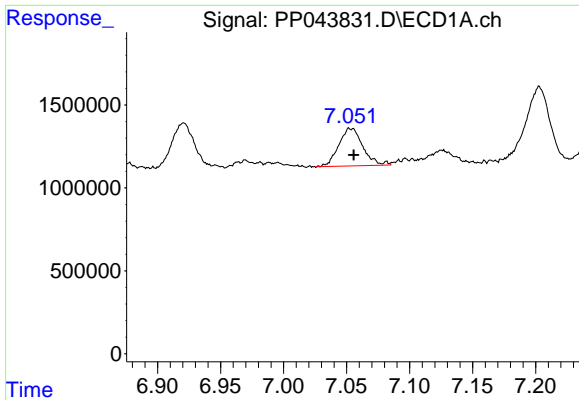
#28 AR-1254-3

R.T.: 6.739 min
Delta R.T.: -0.002 min
Response: 3647568
Conc: 31.52 ng/ml



#28 AR-1254-3

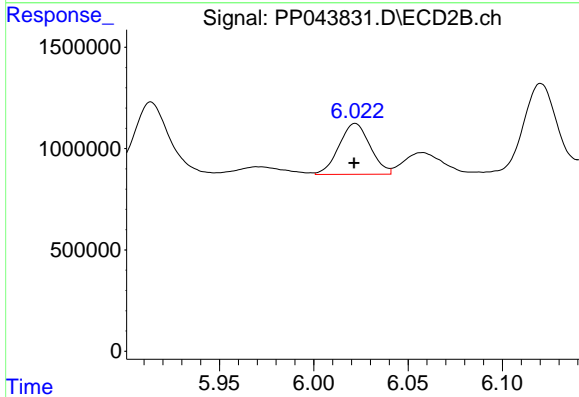
R.T.: 5.773 min
Delta R.T.: 0.000 min
Response: 5538968
Conc: 45.19 ng/ml



#29 AR-1254-4

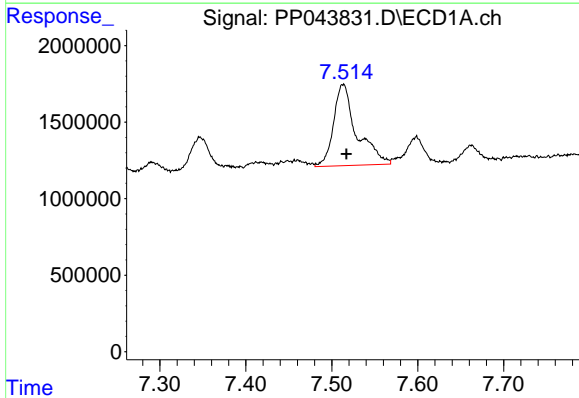
R.T.: 7.054 min
 Delta R.T.: -0.002 min
 Response: 3032777
 Conc: 37.99 ng/ml

Instrument :
 ECD_P
 ClientSampleId :



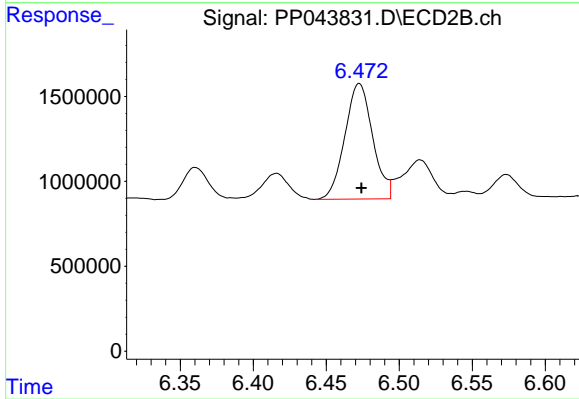
#29 AR-1254-4

R.T.: 6.022 min
 Delta R.T.: 0.000 min
 Response: 2884084
 Conc: 36.54 ng/ml



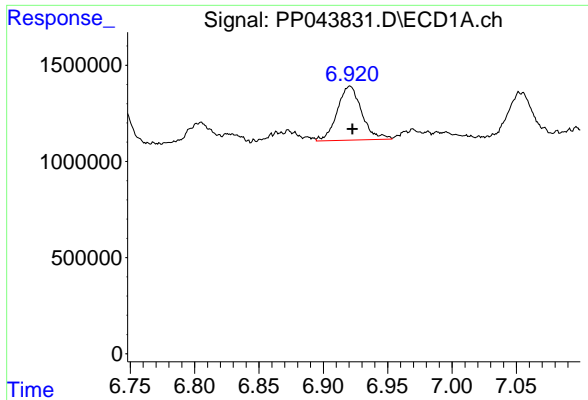
#30 AR-1254-5

R.T.: 7.513 min
 Delta R.T.: -0.004 min
 Response: 9952750
 Conc: 116.05 ng/ml



#30 AR-1254-5

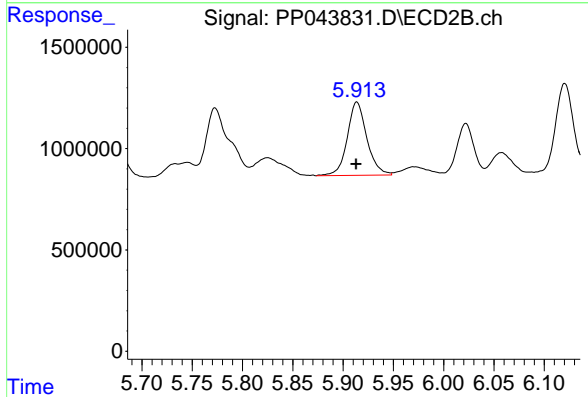
R.T.: 6.473 min
 Delta R.T.: -0.002 min
 Response: 9004097
 Conc: 77.86 ng/ml



#31 AR-1260-1

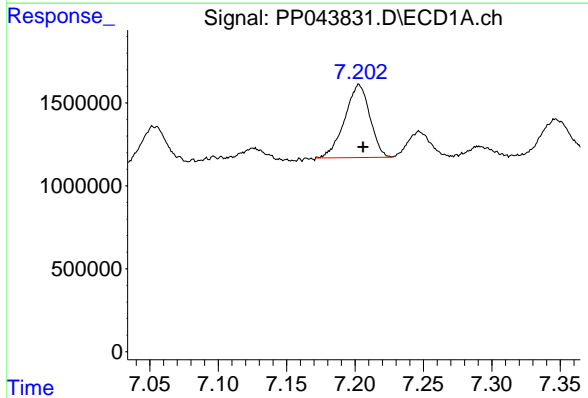
R.T.: 6.920 min
 Delta R.T.: -0.002 min
 Response: 3707338
 Conc: 44.27 ng/ml

Instrument :
 ECD_P
 ClientSampleId :



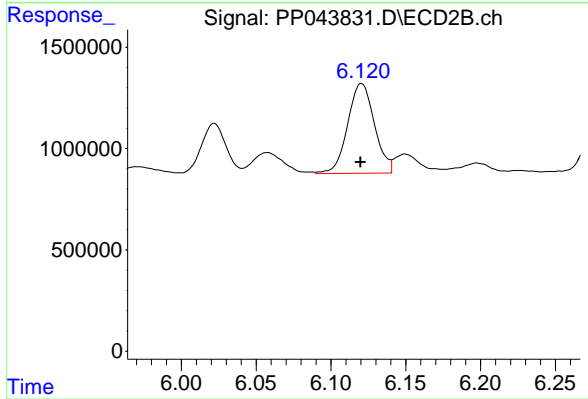
#31 AR-1260-1

R.T.: 5.914 min
 Delta R.T.: 0.000 min
 Response: 4919365
 Conc: 61.52 ng/ml



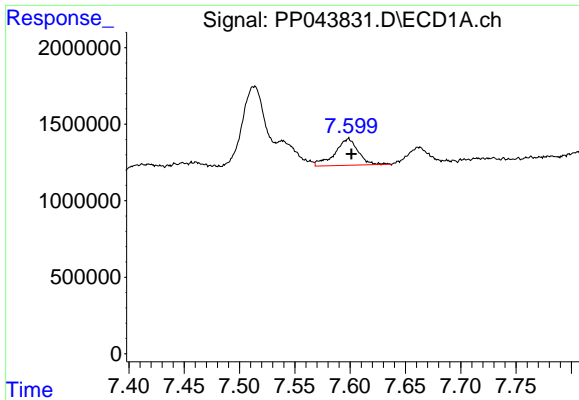
#32 AR-1260-2

R.T.: 7.203 min
 Delta R.T.: -0.003 min
 Response: 5634189
 Conc: 62.24 ng/ml



#32 AR-1260-2

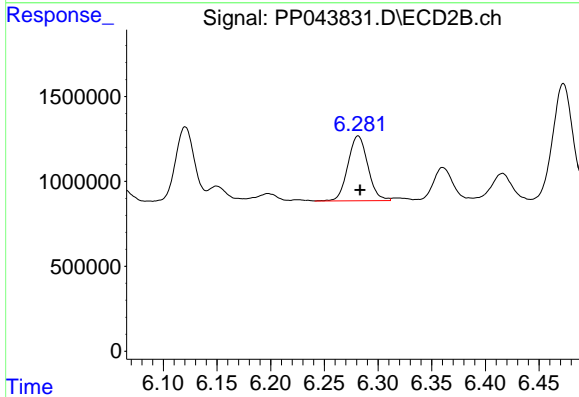
R.T.: 6.120 min
 Delta R.T.: 0.000 min
 Response: 5521957
 Conc: 56.55 ng/ml



#33 AR-1260-3

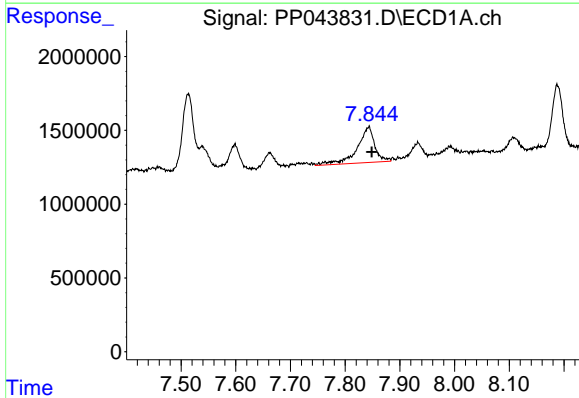
R.T.: 7.598 min
 Delta R.T.: -0.003 min
 Response: 2541699
 Conc: 35.06 ng/ml

Instrument :
 ECD_P
 ClientSampleId :



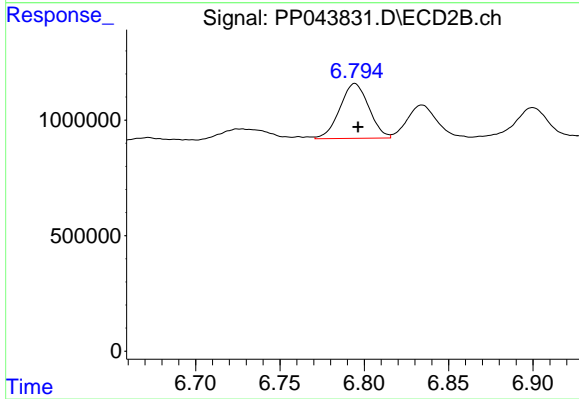
#33 AR-1260-3

R.T.: 6.281 min
 Delta R.T.: -0.002 min
 Response: 4937920
 Conc: 54.09 ng/ml



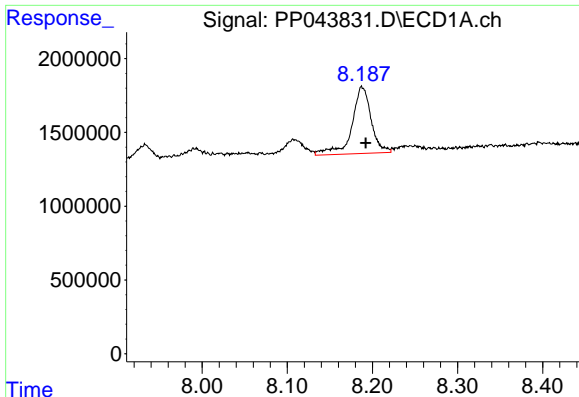
#34 AR-1260-4

R.T.: 7.843 min
 Delta R.T.: -0.006 min
 Response: 5405814
 Conc: 62.96 ng/ml



#34 AR-1260-4

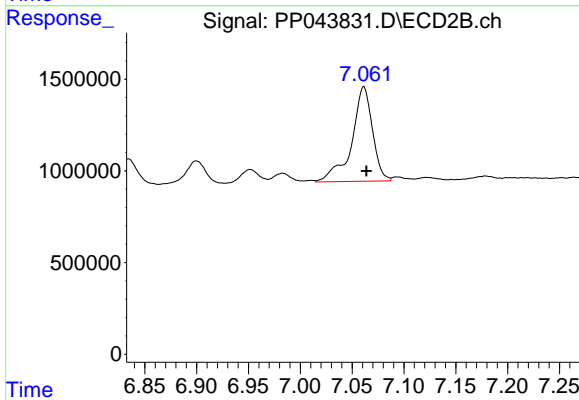
R.T.: 6.794 min
 Delta R.T.: -0.002 min
 Response: 2849311
 Conc: 35.22 ng/ml



#35 AR-1260-5

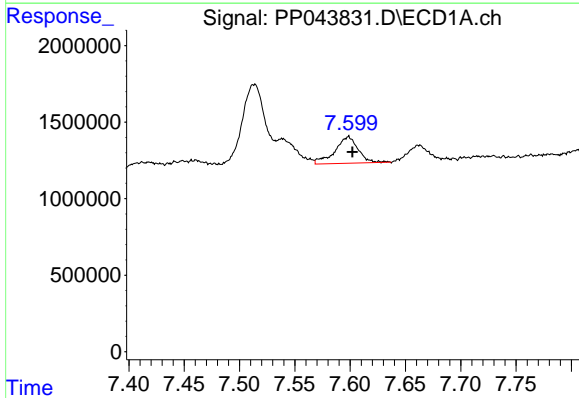
R.T.: 8.188 min
 Delta R.T.: -0.004 min
 Response: 7101583
 Conc: 45.81 ng/ml

Instrument :
 ECD_P
 ClientSampleId :



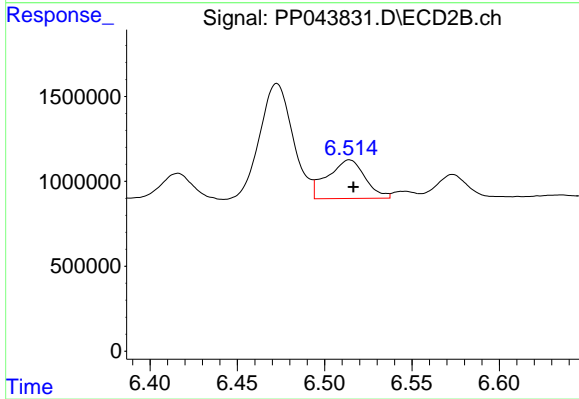
#35 AR-1260-5

R.T.: 7.061 min
 Delta R.T.: -0.003 min
 Response: 7233247
 Conc: 39.13 ng/ml



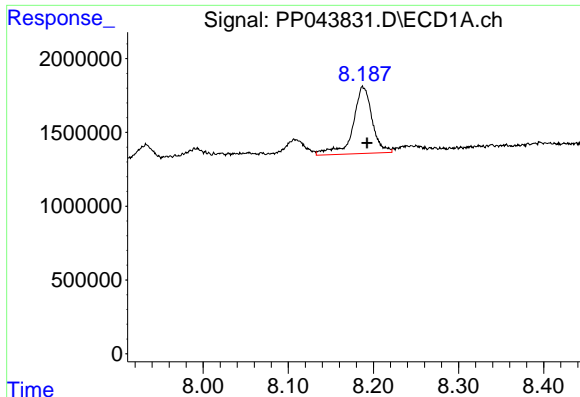
#36 AR-1262-1

R.T.: 7.598 min
 Delta R.T.: -0.004 min
 Response: 2541699
 Conc: 25.74 ng/ml



#36 AR-1262-1

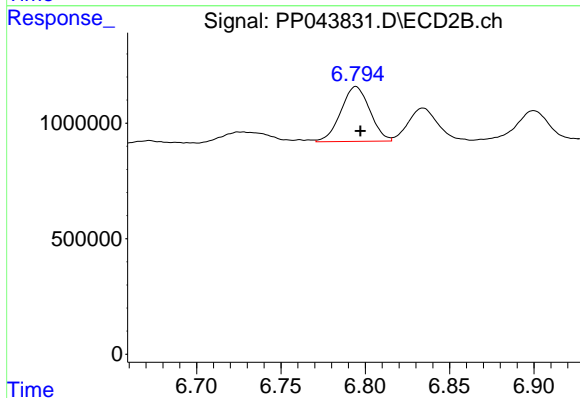
R.T.: 6.514 min
 Delta R.T.: -0.002 min
 Response: 3398919
 Conc: 30.92 ng/ml



#37 AR-1262-2

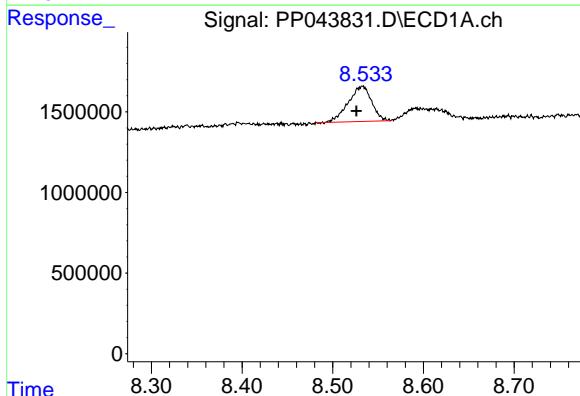
R.T.: 8.188 min
 Delta R.T.: -0.004 min
 Response: 7101583
 Conc: 43.99 ng/ml

Instrument :
 ECD_P
 ClientSampleId :



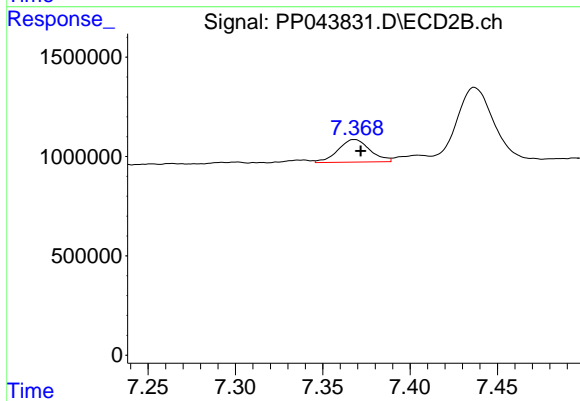
#37 AR-1262-2

R.T.: 6.794 min
 Delta R.T.: -0.003 min
 Response: 2849311
 Conc: 27.93 ng/ml



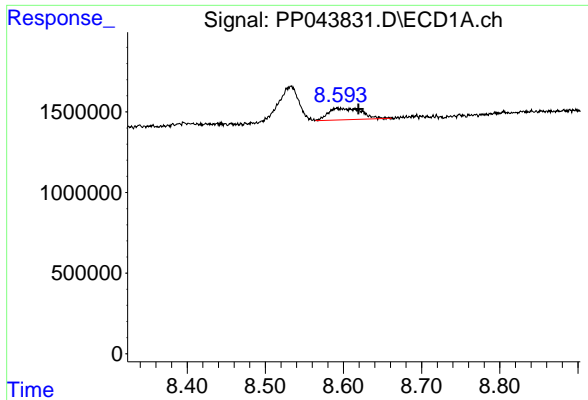
#38 AR-1262-3

R.T.: 8.532 min
 Delta R.T.: 0.006 min
 Response: 3906520
 Conc: 35.71 ng/ml



#38 AR-1262-3

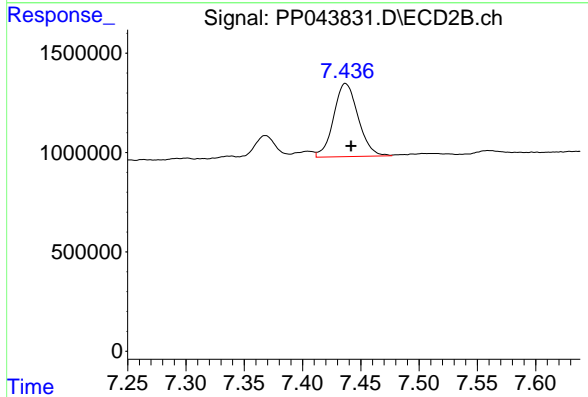
R.T.: 7.368 min
 Delta R.T.: -0.004 min
 Response: 1441670
 Conc: 16.92 ng/ml



#39 AR-1262-4

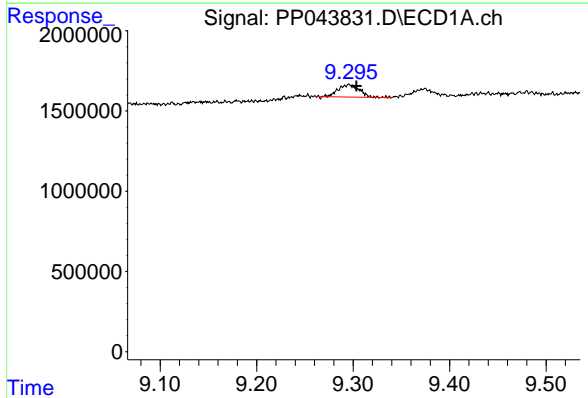
R.T.: 8.592 min
 Delta R.T.: -0.027 min
 Response: 2141520
 Conc: 44.66 ng/ml

Instrument :
 ECD_P
 ClientSampleId :



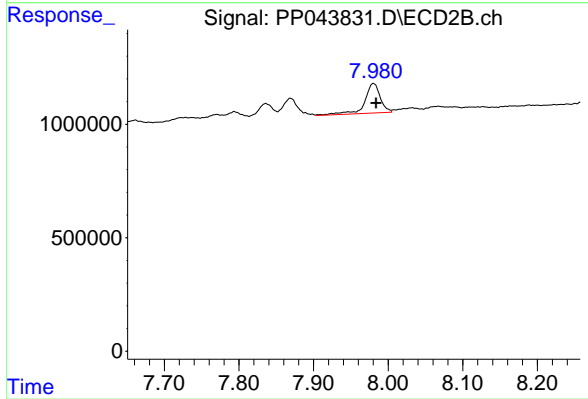
#39 AR-1262-4

R.T.: 7.437 min
 Delta R.T.: -0.005 min
 Response: 5385392
 Conc: 34.67 ng/ml



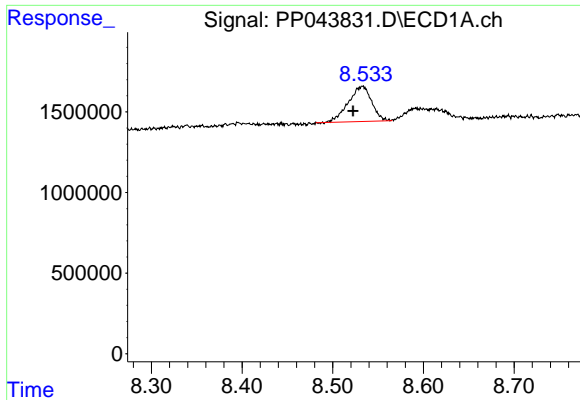
#40 AR-1262-5

R.T.: 9.295 min
 Delta R.T.: -0.008 min
 Response: 1183880
 Conc: 21.26 ng/ml



#40 AR-1262-5

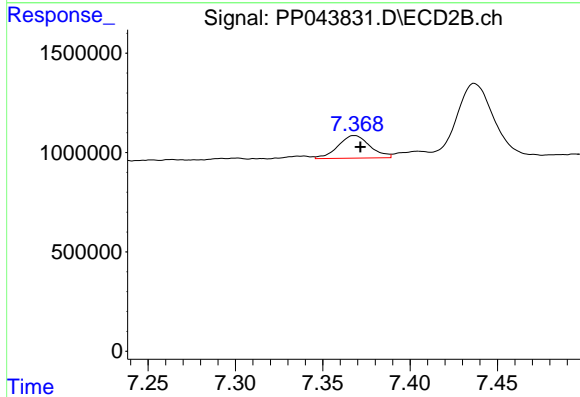
R.T.: 7.980 min
 Delta R.T.: -0.004 min
 Response: 1875359
 Conc: 24.11 ng/ml



#41 AR-1268-1

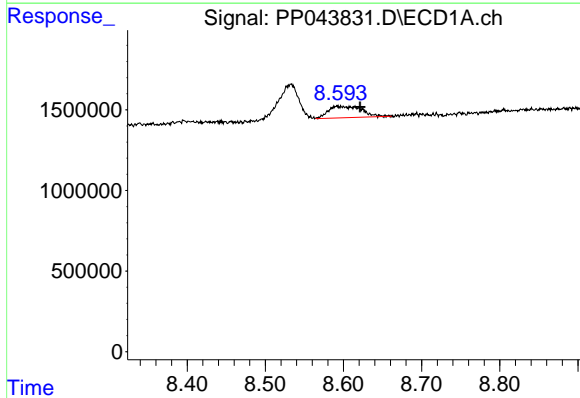
R.T.: 8.532 min
 Delta R.T.: 0.010 min
 Response: 3906520
 Conc: 20.04 ng/ml

Instrument :
 ECD_P
 ClientSampleId :



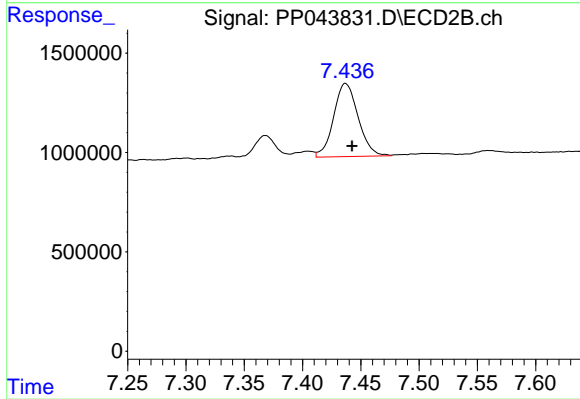
#41 AR-1268-1

R.T.: 7.368 min
 Delta R.T.: -0.003 min
 Response: 1441670
 Conc: 5.69 ng/ml



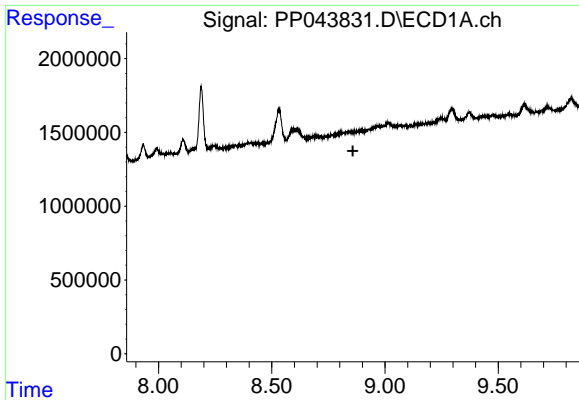
#42 AR-1268-2

R.T.: 8.592 min
 Delta R.T.: -0.029 min
 Response: 2141520
 Conc: 12.23 ng/ml



#42 AR-1268-2

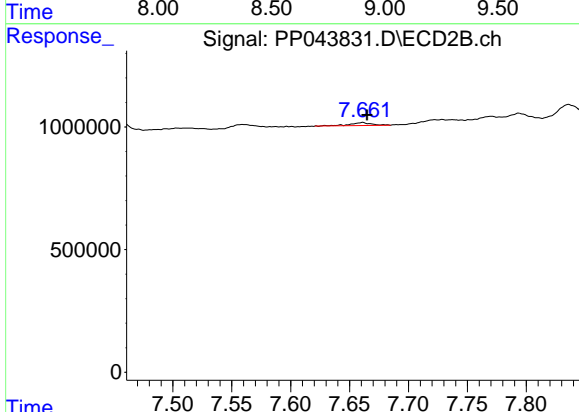
R.T.: 7.437 min
 Delta R.T.: -0.006 min
 Response: 5385392
 Conc: 23.83 ng/ml



#43 AR-1268-3

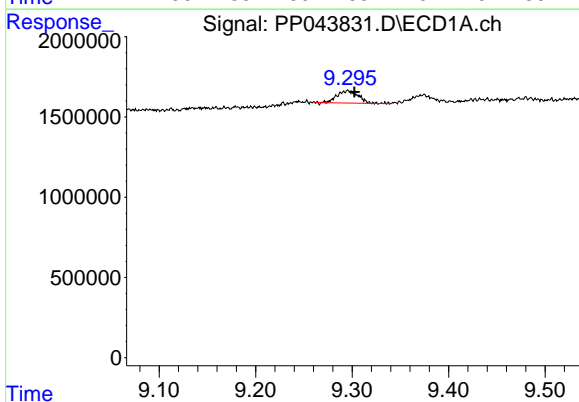
R.T.: 0.000 min
 Exp R.T.: 8.859 min
 Response: 0
 Conc: N.D.

Instrument :
 ECD_P
 ClientSampleId :



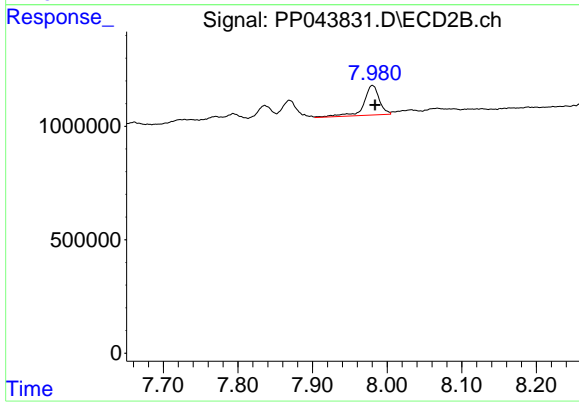
#43 AR-1268-3

R.T.: 7.661 min
 Delta R.T.: -0.004 min
 Response: 159442
 Conc: 0.82 ng/ml



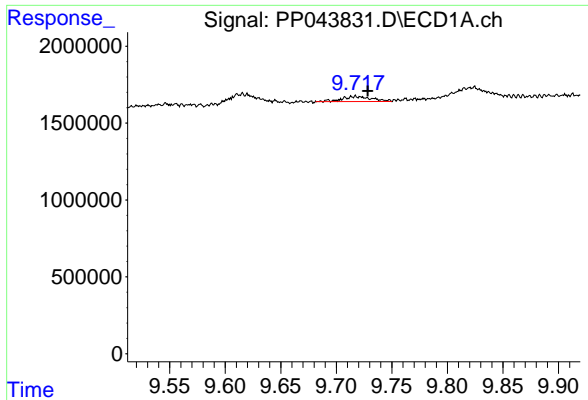
#44 AR-1268-4

R.T.: 9.295 min
 Delta R.T.: -0.007 min
 Response: 1183880
 Conc: 18.92 ng/ml



#44 AR-1268-4

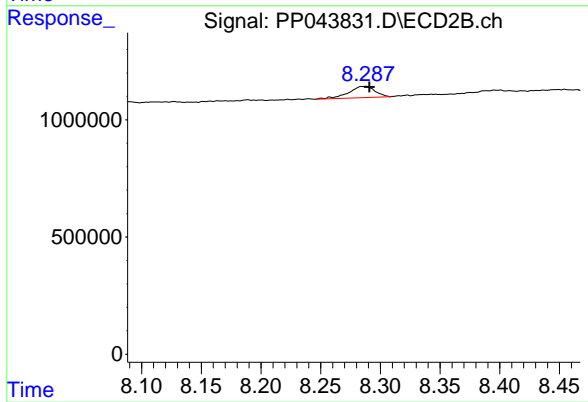
R.T.: 7.980 min
 Delta R.T.: -0.003 min
 Response: 1875359
 Conc: 20.85 ng/ml



#45 AR-1268-5

R.T.: 9.718 min
Delta R.T.: -0.011 min
Response: 624364
Conc: 1.37 ng/ml

Instrument :
ECD_P
ClientSampleId :



#45 AR-1268-5

R.T.: 8.287 min
Delta R.T.: -0.004 min
Response: 735468
Conc: 1.22 ng/ml