

Data Path : Z:\pestpcbsrv\HPCHEM1\ECD_P\Data\PP021921\
 Data File : PP033452.D
 Signal(s) : Signal #1: ECD1A.CH Signal #2: ECD2B.CH
 Acq On : 19 Feb 2021 21:28
 Operator : DD\AJ
 Sample : AR1248CCC500
 Misc :
 ALS Vial : 4 Sample Multiplier: 1

Instrument :
 ECD_P
ClientSampleId :
 AR1248CCC500

Manual Integrations
APPROVED
 Ankita
 2/22/2021 10:06:48 AM

Integration File signal 1: autoint1.e
 Integration File signal 2: autoint2.e
 Quant Time: Feb 20 01:47:53 2021
 Quant Method : Z:\pestpcbsrv\HPCHEM1\ECD_P\methods\PP020821.M
 Quant Title : GC EXTRACTABLES
 QLast Update : Tue Feb 09 04:00:57 2021
 Response via : Initial Calibration
 Integrator: ChemStation 6890 Scale Mode: Small noise peaks clipped

Volume Inj. : 2 µl
 Signal #1 Phase : ZB-MR1 Signal #2 Phase: ZB-MR2
 Signal #1 Info : 30Mx0.32mmx 0.50µ Signal #2 Info : 30M x 0.32mm x 0.25µm

Compound	RT#1	RT#2	Resp#1	Resp#2	ng/ml	ng/ml

System Monitoring Compounds						
1) SA Tetrachlo...	4.724	3.996	3477833	2221722	56.714	54.332
2) SA Decachlor...	10.540	9.256	2467883	1822023	56.654	54.389
Target Compounds						
21) L5 AR-1248-1	6.022	5.239	558764	372360	583.589	572.564
22) L5 AR-1248-2	6.315	5.500	727554	512824	549.067	534.550
23) L5 AR-1248-3	6.529	5.545	885316	546060	546.734	537.061
24) L5 AR-1248-4	6.953	5.729	1008210	523776	585.949	422.647 #
25) L5 AR-1248-5	6.993	6.149	1011245	658695	581.174	583.261m

(f)=RT Delta > 1/2 Window (#)=Amounts differ by > 25% (m)=manual int.

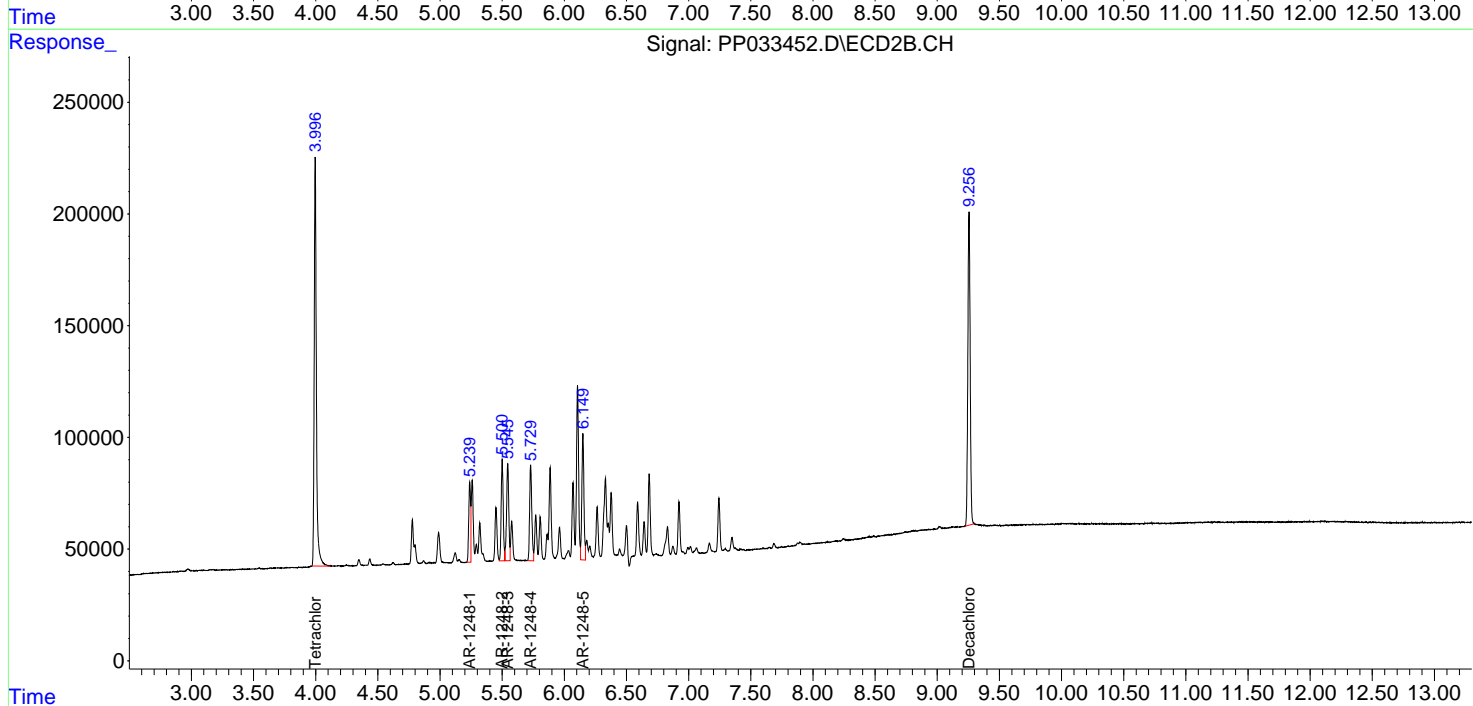
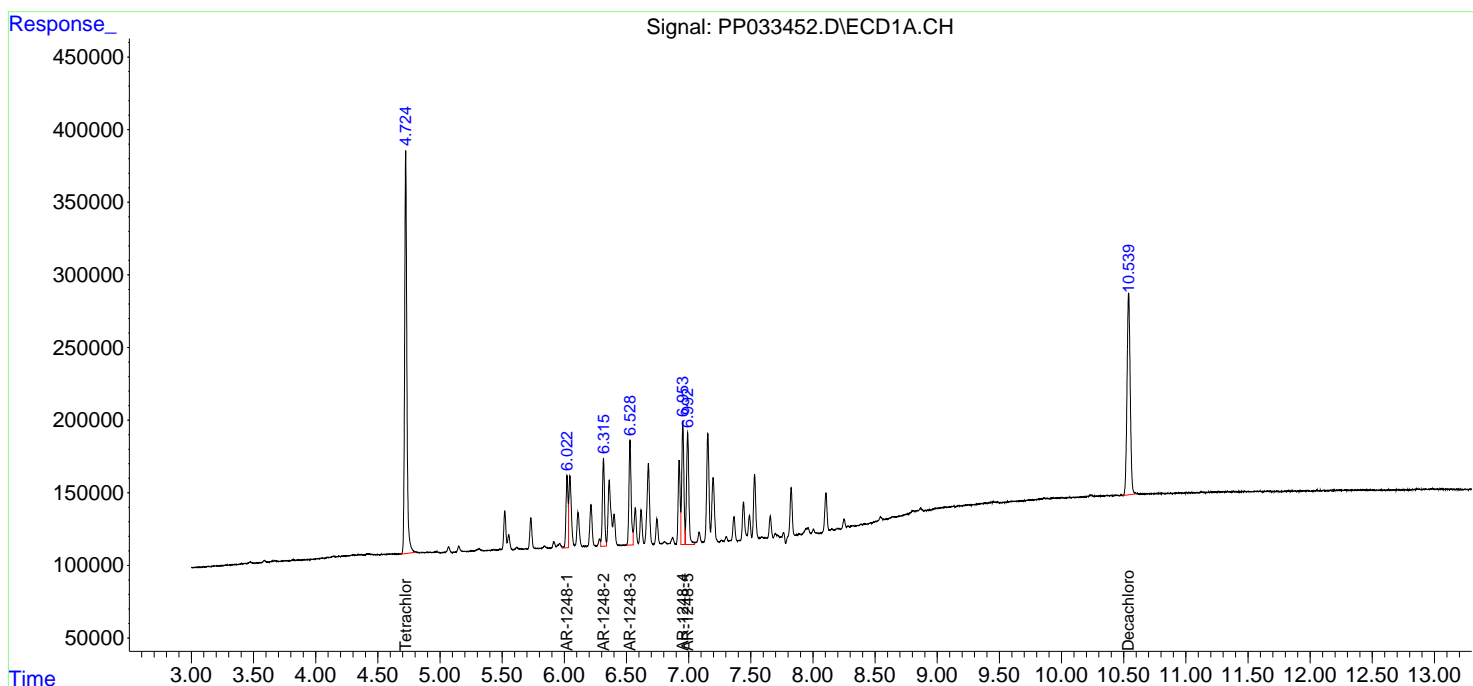
Data Path : Z:\pestpcbsrv\HPCHEM1\ECD_P\Data\PP021921\
 Data File : PP033452.D
 Signal(s) : Signal #1: ECD1A.CH Signal #2: ECD2B.CH
 Acq On : 19 Feb 2021 21:28
 Operator : DD\AJ
 Sample : AR1248CCC500
 Misc :
 ALS Vial : 4 Sample Multiplier: 1

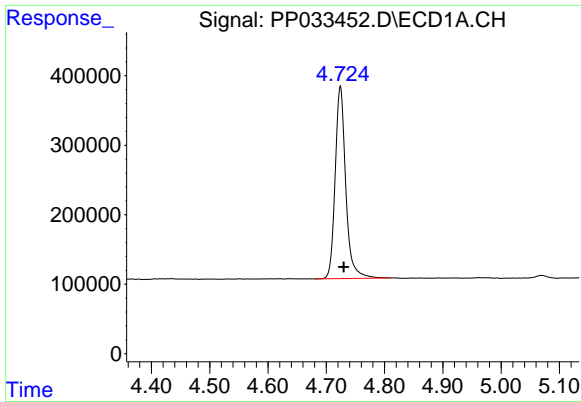
Instrument :
 ECD_P
ClientSampled :
 AR1248CCC500

Manual Integrations
APPROVED
 Ankita
 2/22/2021 10:06:48 AM

Integration File signal 1: autoint1.e
 Integration File signal 2: autoint2.e
 Quant Time: Feb 20 01:47:53 2021
 Quant Method : Z:\pestpcbsrv\HPCHEM1\ECD_P\methods\PP020821.M
 Quant Title : GC EXTRACTABLES
 QLast Update : Tue Feb 09 04:00:57 2021
 Response via : Initial Calibration
 Integrator: ChemStation 6890 Scale Mode: Small noise peaks clipped

Volume Inj. : 2 µl
 Signal #1 Phase : ZB-MR1 Signal #2 Phase: ZB-MR2
 Signal #1 Info : 30Mx0.32mmx 0.50µ Signal #2 Info : 30M x 0.32mm x 0.25µm





#1 Tetrachloro-m-xylene

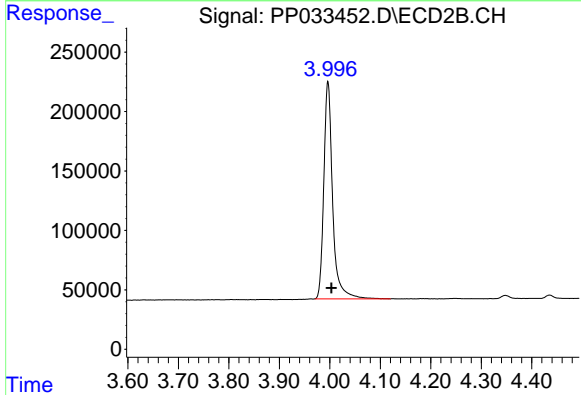
R.T.: 4.724 min
 Delta R.T.: -0.006 min
 Response: 3477833
 Conc: 56.71 ng/ml

Instrument :
 ECD_P
 ClientSampleId :
 AR1248CCC500

Manual Integrations
 APPROVED

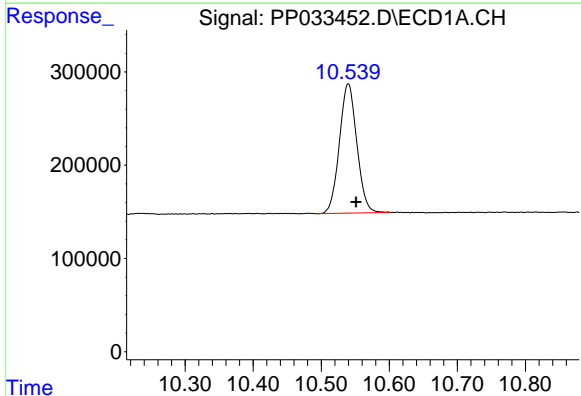
Ankita

2/22/2021 10:06:48 AM



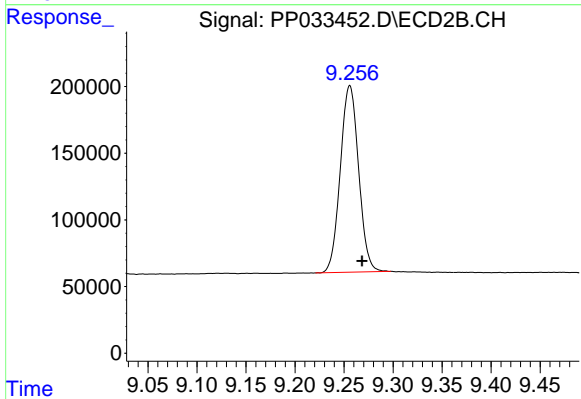
#1 Tetrachloro-m-xylene

R.T.: 3.996 min
 Delta R.T.: -0.007 min
 Response: 2221722
 Conc: 54.33 ng/ml



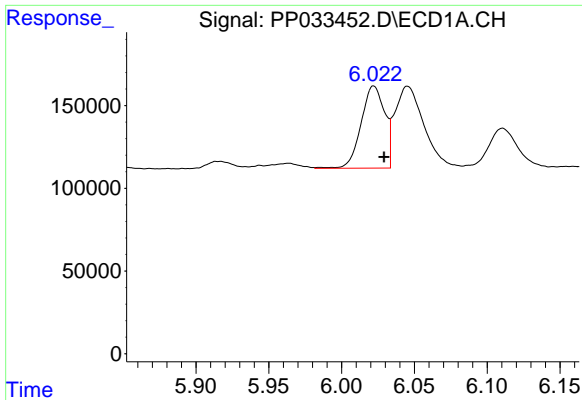
#2 Decachlorobiphenyl

R.T.: 10.540 min
 Delta R.T.: -0.011 min
 Response: 2467883
 Conc: 56.65 ng/ml



#2 Decachlorobiphenyl

R.T.: 9.256 min
 Delta R.T.: -0.012 min
 Response: 1822023
 Conc: 54.39 ng/ml

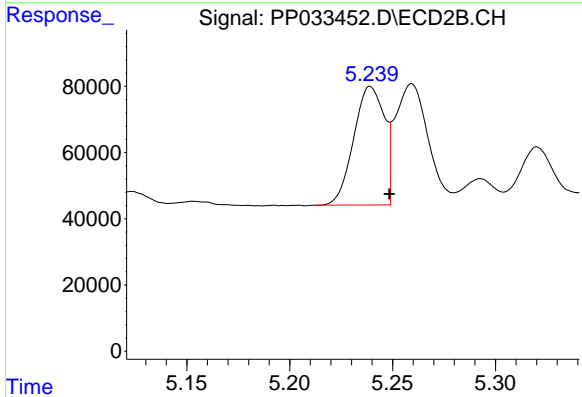


#21 AR-1248-1

R.T.: 6.022 min
 Delta R.T.: -0.007 min
 Response: 558764
 Conc: 583.59 ng/ml

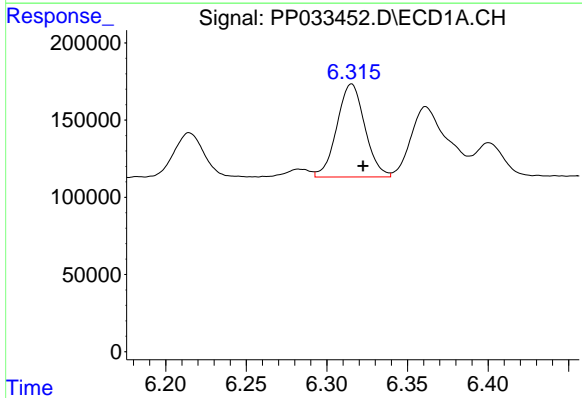
Instrument :
 ECD_P
ClientSampled :
 AR1248CCC500

Manual Integrations
APPROVED
 Ankita
 2/22/2021 10:06:48 AM



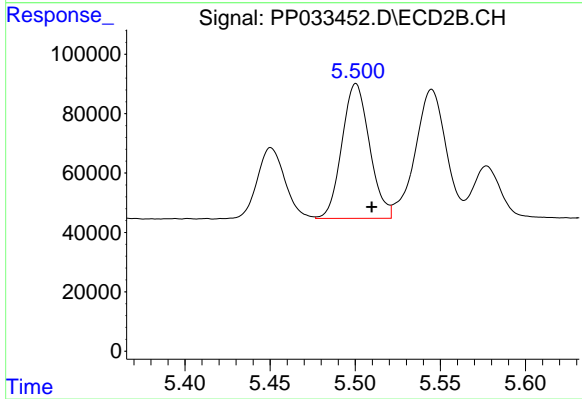
#21 AR-1248-1

R.T.: 5.239 min
 Delta R.T.: -0.009 min
 Response: 372360
 Conc: 572.56 ng/ml



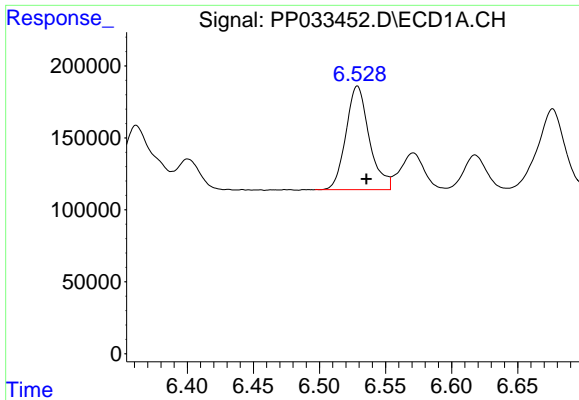
#22 AR-1248-2

R.T.: 6.315 min
 Delta R.T.: -0.007 min
 Response: 727554
 Conc: 549.07 ng/ml



#22 AR-1248-2

R.T.: 5.500 min
 Delta R.T.: -0.009 min
 Response: 512824
 Conc: 534.55 ng/ml

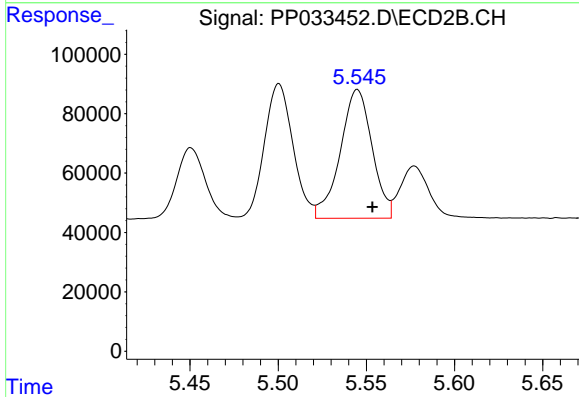


#23 AR-1248-3

R.T.: 6.529 min
 Delta R.T.: -0.007 min
 Response: 885316
 Conc: 546.73 ng/ml

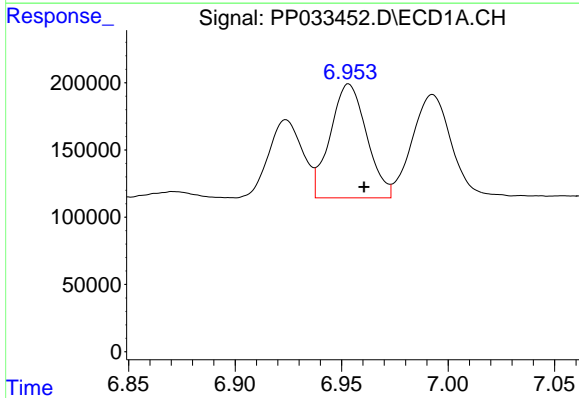
Instrument :
 ECD_P
ClientSampleId :
 AR1248CCC500

Manual Integrations
APPROVED
 Ankita
 2/22/2021 10:06:48 AM



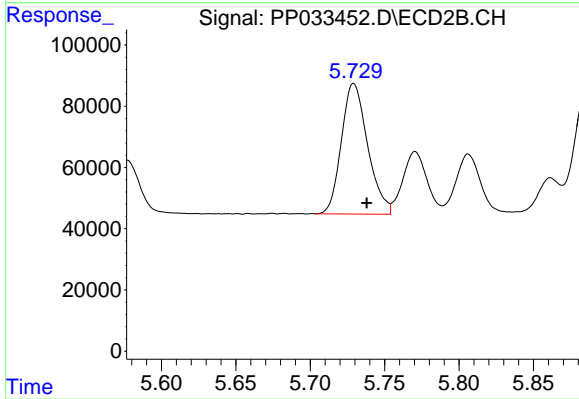
#23 AR-1248-3

R.T.: 5.545 min
 Delta R.T.: -0.009 min
 Response: 546060
 Conc: 537.06 ng/ml



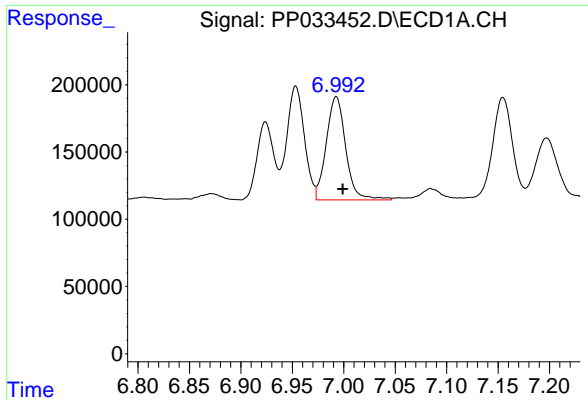
#24 AR-1248-4

R.T.: 6.953 min
 Delta R.T.: -0.007 min
 Response: 1008210
 Conc: 585.95 ng/ml



#24 AR-1248-4

R.T.: 5.729 min
 Delta R.T.: -0.009 min
 Response: 523776
 Conc: 422.65 ng/ml



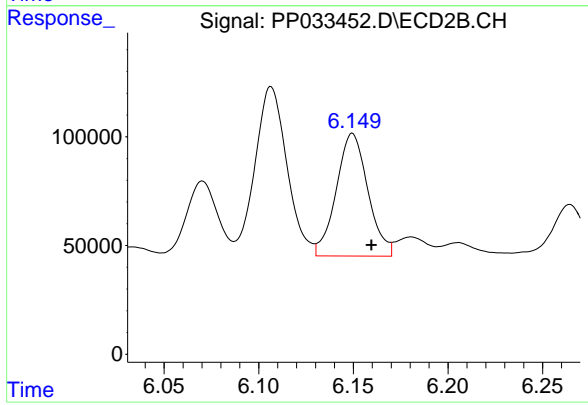
#25 AR-1248-5

R.T.: 6.993 min
Delta R.T.: -0.006 min
Response: 1011245
Conc: 581.17 ng/ml

Instrument :
ECD_P
ClientSampled :
AR1248CCC500

Manual Integrations
APPROVED

Ankita
2/22/2021 10:06:48 AM



#25 AR-1248-5

R.T.: 6.149 min
Delta R.T.: -0.010 min
Response: 658695
Conc: 583.26 ng/ml m