

Data Path : Z:\pestpcbsrv\HPCHEM1\ECD_P\Data\PP021925\
 Data File : PP069868.D
 Signal(s) : Signal #1: ECD1A.ch Signal #2: ECD2B.ch
 Acq On : 19 Feb 2025 23:33
 Operator : YP\AJ
 Sample : Q1383-03
 Misc :
 ALS Vial : 33 Sample Multiplier: 1

Instrument :
 ECD_P
 ClientSampleId :
 OU4-PCS-TC-12-021725

Integration File signal 1: autoint1.e
 Integration File signal 2: autoint2.e
 Quant Time: Feb 22 01:35:44 2025
 Quant Method : Z:\pestpcbsrv\HPCHEM1\ECD_P\methods\PP012825.M
 Quant Title : GC EXTRACTABLES
 QLast Update : Wed Jan 29 00:13:21 2025
 Response via : Initial Calibration
 Integrator: ChemStation

Volume Inj. : 2 µl
 Signal #1 Phase : ZB-MR1 Signal #2 Phase: ZB-MR2
 Signal #1 Info : 30Mx0.32mmx 0.50µ Signal #2 Info : 30M x 0.32mm x 0.25µm

Compound	RT#1	RT#2	Resp#1	Resp#2	ng/ml	ng/ml
System Monitoring Compounds						
1) SA Tetrachlo...	4.524	3.830	38829804	22967640	27.126	25.733
2) SA Decachlor...	10.250	8.889	25904009	26669942	23.702	23.845
Target Compounds						
3) L1 AR-1016-1	0.000	4.942	0	42212	N.D.	1.294 #
4) L1 AR-1016-2	0.000	4.955	0	35820	N.D.	0.797 #
5) L1 AR-1016-3	0.000	5.160	0	398233	N.D.	16.004 #
6) L1 AR-1016-4	0.000	5.160	0	398233	N.D.	19.718 #
7) L1 AR-1016-5	0.000	5.370	0	760123	N.D.	28.338 #
8) L2 AR-1221-1	0.000	4.047	0	97528	N.D.	7.917 #
9) L2 AR-1221-2	4.825	4.133	656760	622001	47.965	64.234 #
10) L2 AR-1221-3	0.000	4.203	0	170105	N.D.	5.831 #
11) L3 AR-1232-1	0.000	4.203	0	170105	N.D.	7.245 #
12) L3 AR-1232-2	5.378f	4.955	466225	35820	28.529	1.520 #
13) L3 AR-1232-3	0.000	5.160	0	398233	N.D.	30.758 #
14) L3 AR-1232-4	0.000	5.201	0	217962	N.D.	19.661 #
15) L3 AR-1232-5	0.000	5.370	0	760123	N.D.	62.253 #
16) L4 AR-1242-1	0.000	4.942	0	42212	N.D.	1.464 #
17) L4 AR-1242-2	0.000	4.955	0	35820	N.D.	0.909 #
18) L4 AR-1242-3	0.000	5.160	0	398233	N.D.	17.696 #
19) L4 AR-1242-4	0.000	5.201	0	217962	N.D.	10.099 #
20) L4 AR-1242-5	6.549f	5.726	1044957	1228647	32.069	42.708 #
21) L5 AR-1248-1	0.000	4.942	0	42212	N.D.	1.918 #
22) L5 AR-1248-2	0.000	5.160	0	398233	N.D.	13.246 #
23) L5 AR-1248-3	0.000	5.201	0	217962	N.D.	7.035 #
24) L5 AR-1248-4	6.549	5.370	1044957	760123	18.957	20.575
25) L5 AR-1248-5	6.549f	5.770	1044957	440192	19.574	11.773 #
26) L6 AR-1254-1	6.549	5.726	1044957	1228647	18.059	22.316
27) L6 AR-1254-2	6.742	5.876	1983077	1456696	24.714	30.116
28) L6 AR-1254-3	7.105	6.280	1686196	2418836	20.005	31.870 #
29) L6 AR-1254-4	7.386	6.509	1570588	1645823	23.033	32.114 #
30) L6 AR-1254-5	7.803	6.927	1055822	1217174	15.516	18.287
31) L7 AR-1260-1	7.270	6.412	558334	1137853	9.555	23.592 #
32) L7 AR-1260-2	7.524	6.601	855034	633286	10.988	10.330
33) L7 AR-1260-3	0.000	6.754	0	924792	N.D.	15.373 #
34) L7 AR-1260-4	8.089f	7.262	1108356	479999	16.799	10.330 #
35) L7 AR-1260-5	8.391f	7.437f	397624	670977	3.037	6.037 #
36) L8 AR-1262-1	8.089	6.927f	1108356	1217174	14.027	17.140
37) L8 AR-1262-2	8.391f	7.262	397624	479999	2.600	7.871 #
38) L8 AR-1262-3	0.000	7.749	0	83121	N.D.	1.589 #
39) L8 AR-1262-4	0.000	7.815	0	276557	N.D.	2.992 #
40) L8 AR-1262-5	0.000	8.280f	0	58010	N.D.	1.214 #
41) L9 AR-1268-1	0.000	7.749	0	83121	N.D.	0.573 #

Data Path : Z:\pestpcbsrv\HPCHEM1\ECD_P\Data\PP021925\
 Data File : PP069868.D
 Signal(s) : Signal #1: ECD1A.ch Signal #2: ECD2B.ch
 Acq On : 19 Feb 2025 23:33
 Operator : YP\AJ
 Sample : Q1383-03
 Misc :
 ALS Vial : 33 Sample Multiplier: 1

Instrument :
 ECD_P
ClientSampleId :
 OU4-PCS-TC-12-021725

Integration File signal 1: autoint1.e
 Integration File signal 2: autoint2.e
 Quant Time: Feb 22 01:35:44 2025
 Quant Method : Z:\pestpcbsrv\HPCHEM1\ECD_P\methods\PP012825.M
 Quant Title : GC EXTRACTABLES
 QLast Update : Wed Jan 29 00:13:21 2025
 Response via : Initial Calibration
 Integrator: ChemStation

Volume Inj. : 2 µl
 Signal #1 Phase : ZB-MR1 Signal #2 Phase: ZB-MR2
 Signal #1 Info : 30Mx0.32mmx 0.50µ Signal #2 Info : 30M x 0.32mm x 0.25µm

	Compound	RT#1	RT#2	Resp#1	Resp#2	ng/ml	ng/ml
42)	L9 AR-1268-2	0.000	7.815	0	276557	N.D.	2.082 #
44)	L9 AR-1268-4	0.000	8.280f	0	58010	N.D.	1.114 #
45)	L9 AR-1268-5	0.000	8.622	0	185648	N.D.	0.521 #

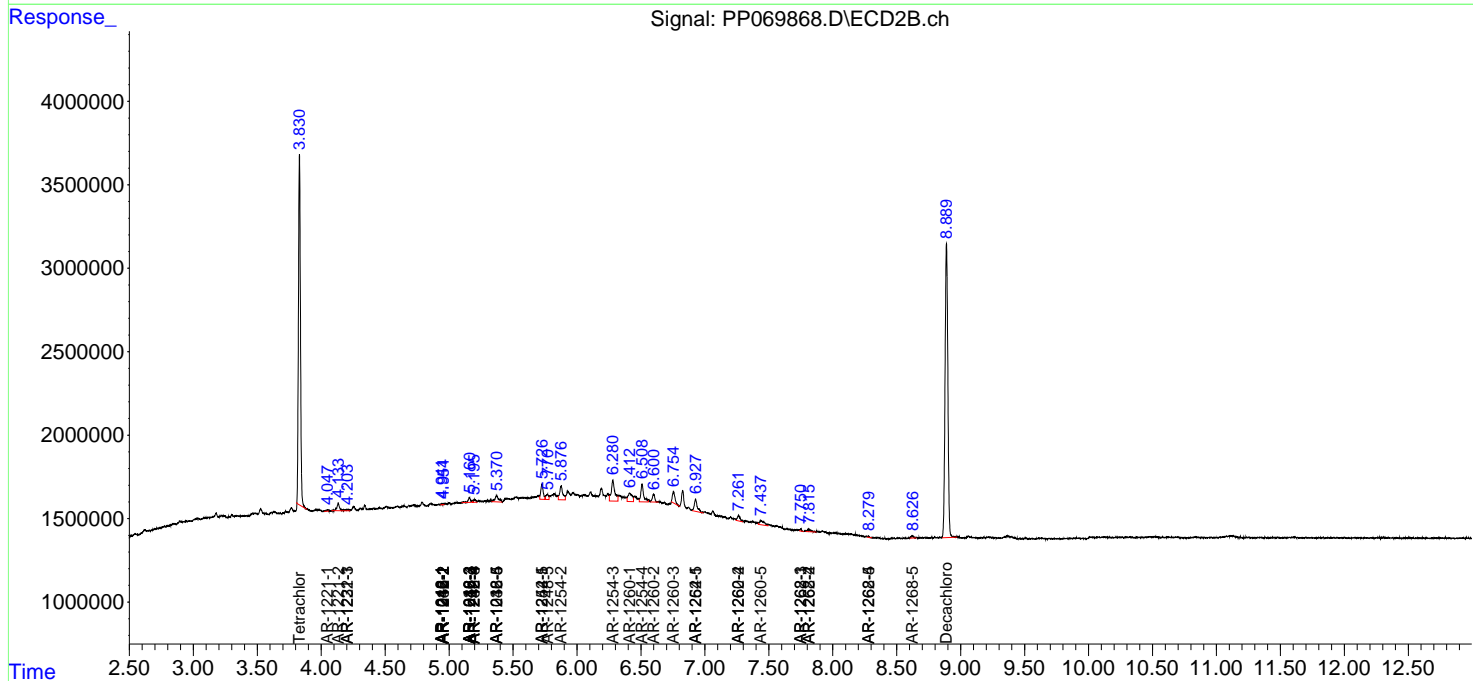
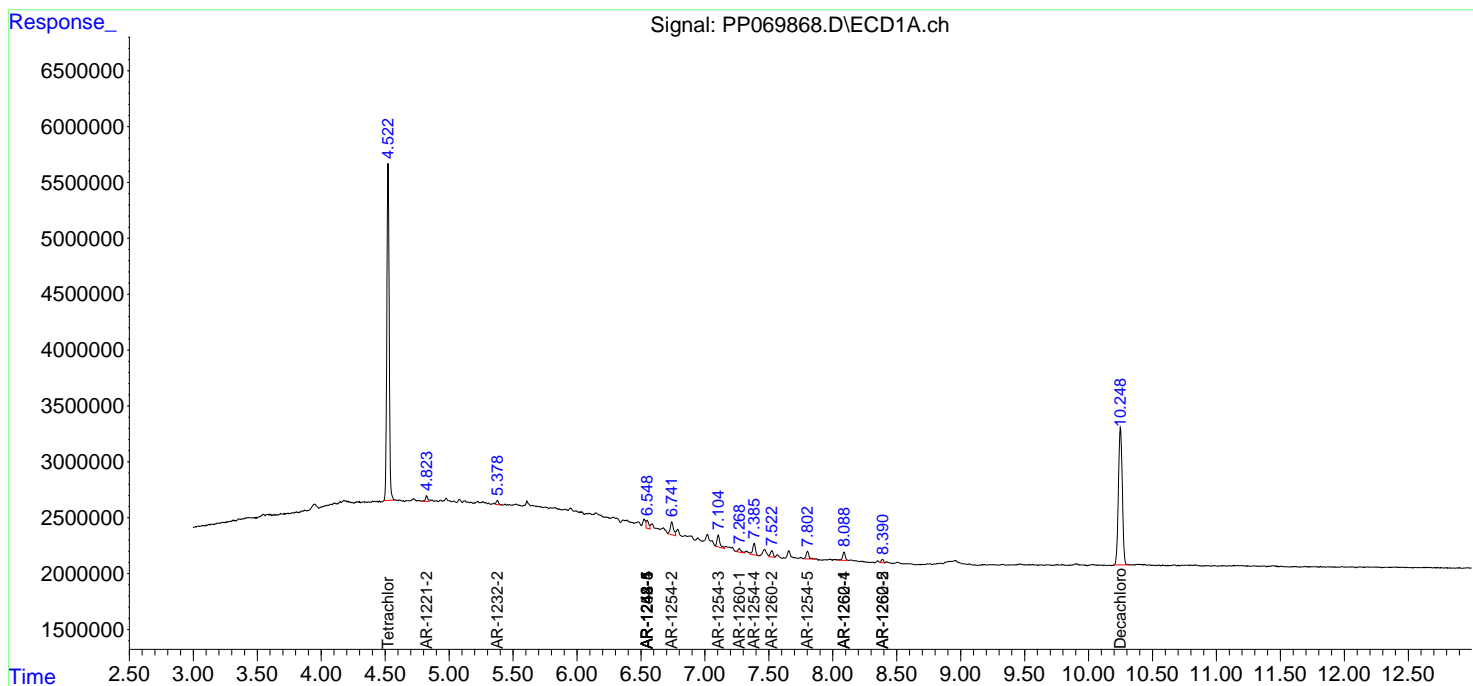
(f)=RT Delta > 1/2 Window (#)=Amounts differ by > 25% (m)=manual int.

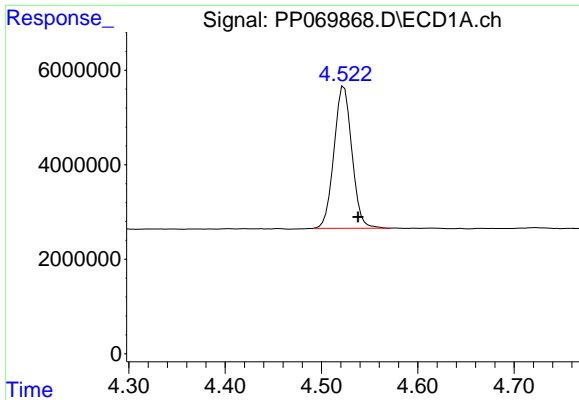
Data Path : Z:\pestpcbsrv\HPCHEM1\ECD_P\Data\PP021925\
 Data File : PP069868.D
 Signal(s) : Signal #1: ECD1A.ch Signal #2: ECD2B.ch
 Acq On : 19 Feb 2025 23:33
 Operator : YP\AJ
 Sample : Q1383-03
 Misc :
 ALS Vial : 33 Sample Multiplier: 1

Instrument :
 ECD_P
 ClientSampleId :
 OU4-PCS-TC-12-021725

Integration File signal 1: autoint1.e
 Integration File signal 2: autoint2.e
 Quant Time: Feb 22 01:35:44 2025
 Quant Method : Z:\pestpcbsrv\HPCHEM1\ECD_P\methods\PP012825.M
 Quant Title : GC EXTRACTABLES
 QLast Update : Wed Jan 29 00:13:21 2025
 Response via : Initial Calibration
 Integrator: ChemStation

Volume Inj. : 2 µl
 Signal #1 Phase : ZB-MR1 Signal #2 Phase: ZB-MR2
 Signal #1 Info : 30Mx0.32mmx 0.50µ Signal #2 Info : 30M x 0.32mm x 0.25µm

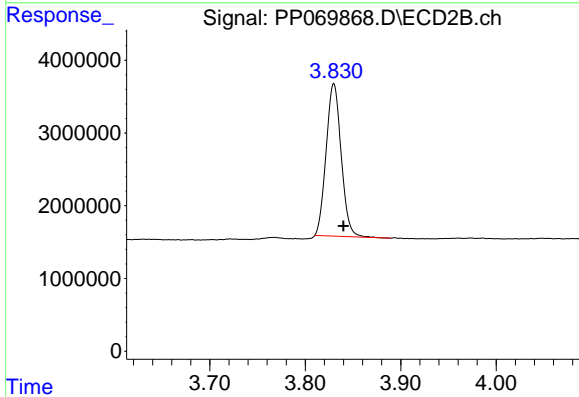




#1 Tetrachloro-m-xylene

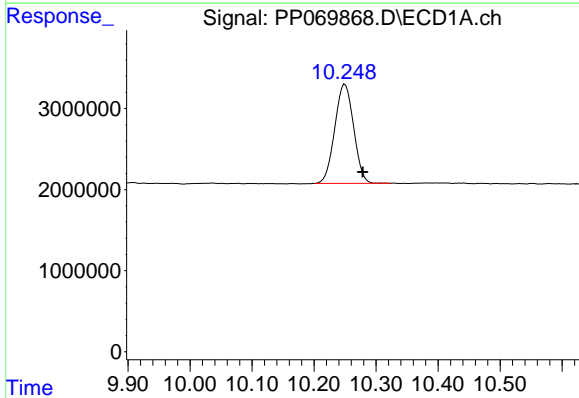
R.T.: 4.524 min
 Delta R.T.: -0.014 min
 Response: 38829804
 Conc: 27.13 ng/ml

Instrument :
 ECD_P
 ClientSampleId :
 OU4-PCS-TC-12-021725



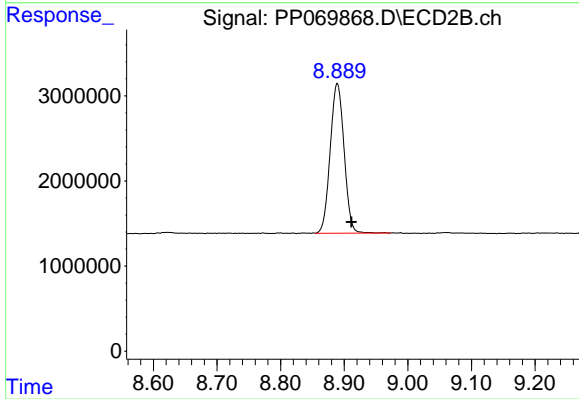
#1 Tetrachloro-m-xylene

R.T.: 3.830 min
 Delta R.T.: -0.010 min
 Response: 22967640
 Conc: 25.73 ng/ml



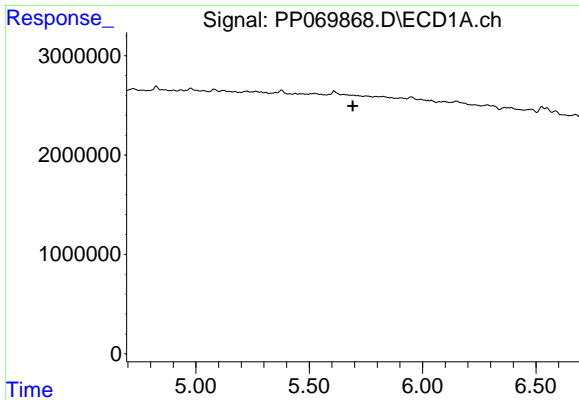
#2 Decachlorobiphenyl

R.T.: 10.250 min
 Delta R.T.: -0.029 min
 Response: 25904009
 Conc: 23.70 ng/ml



#2 Decachlorobiphenyl

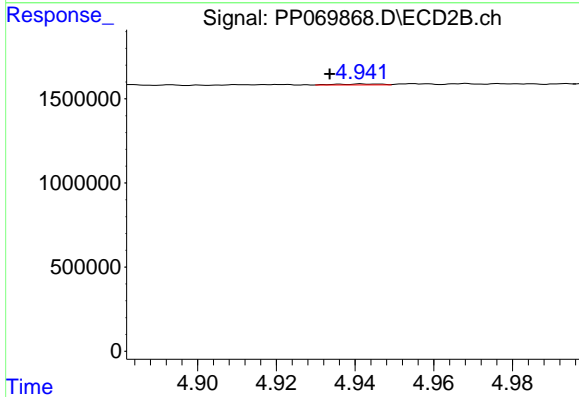
R.T.: 8.889 min
 Delta R.T.: -0.022 min
 Response: 26669942
 Conc: 23.84 ng/ml



#3 AR-1016-1

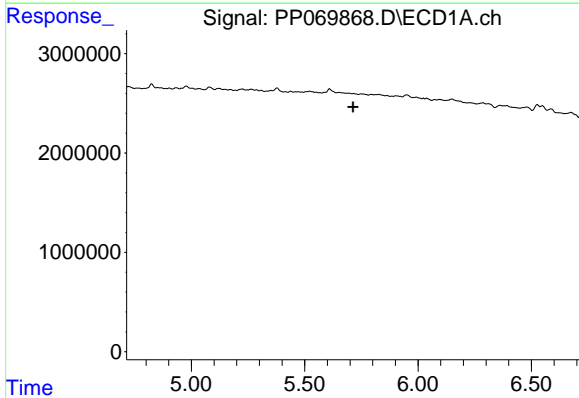
R.T.: 0.000 min
 Exp R.T.: 5.692 min
 Response: 0
 Conc: N.D.

Instrument :
 ECD_P
 ClientSampleId :
 OU4-PCS-TC-12-021725



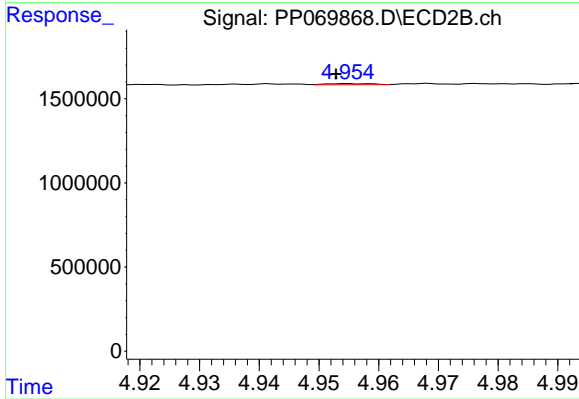
#3 AR-1016-1

R.T.: 4.942 min
 Delta R.T.: 0.008 min
 Response: 42212
 Conc: 1.29 ng/ml



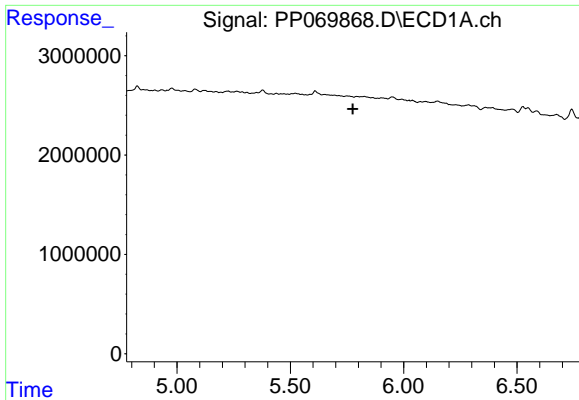
#4 AR-1016-2

R.T.: 0.000 min
 Exp R.T.: 5.714 min
 Response: 0
 Conc: N.D.



#4 AR-1016-2

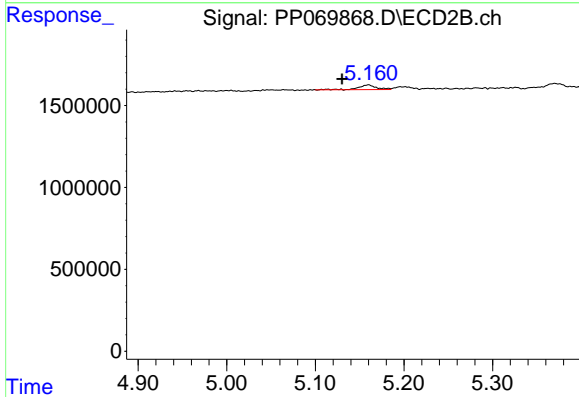
R.T.: 4.955 min
 Delta R.T.: 0.002 min
 Response: 35820
 Conc: 0.80 ng/ml



#5 AR-1016-3

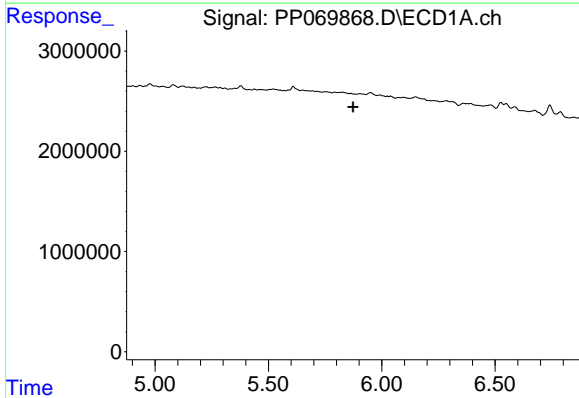
R.T.: 0.000 min
 Exp R.T.: 5.776 min
 Response: 0
 Conc: N.D.

Instrument :
 ECD_P
 ClientSampleId :
 OU4-PCS-TC-12-021725



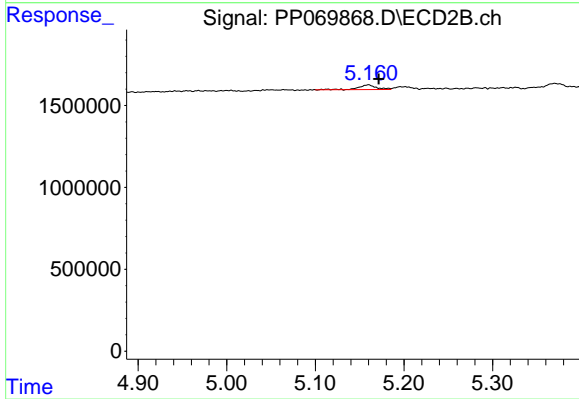
#5 AR-1016-3

R.T.: 5.160 min
 Delta R.T.: 0.030 min
 Response: 398233
 Conc: 16.00 ng/ml



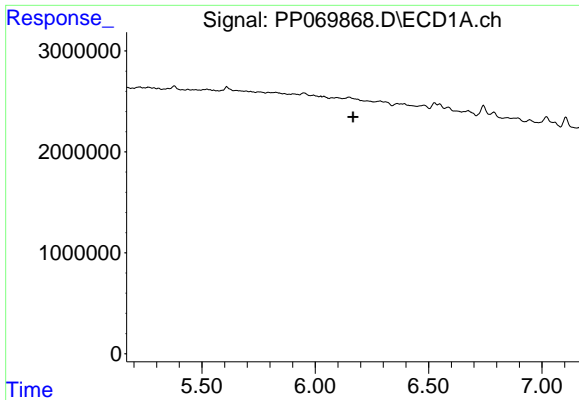
#6 AR-1016-4

R.T.: 0.000 min
 Exp R.T.: 5.874 min
 Response: 0
 Conc: N.D.



#6 AR-1016-4

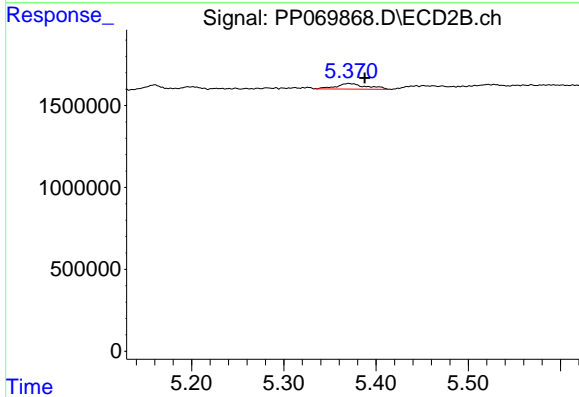
R.T.: 5.160 min
 Delta R.T.: -0.012 min
 Response: 398233
 Conc: 19.72 ng/ml



#7 AR-1016-5

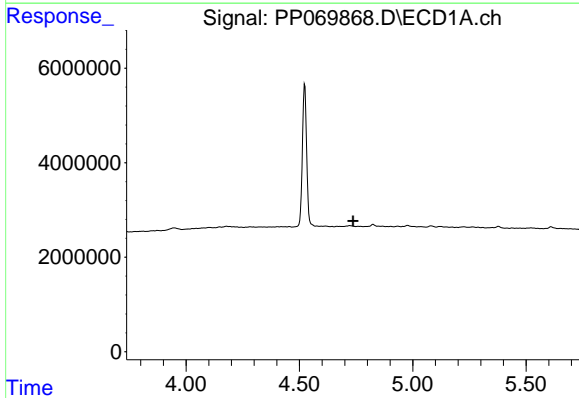
R.T.: 0.000 min
 Exp R.T.: 6.167 min
 Response: 0
 Conc: N.D.

Instrument : ECD_P
 ClientSampleId : OU4-PCS-TC-12-021725



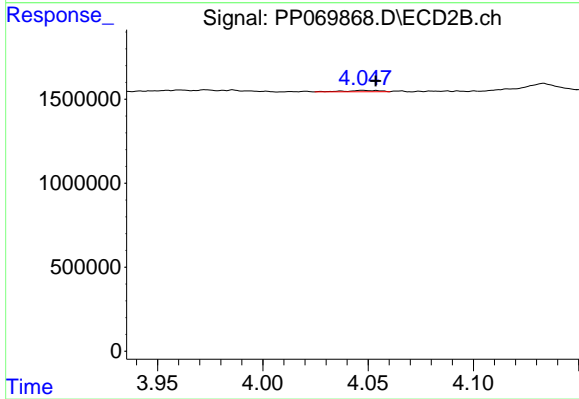
#7 AR-1016-5

R.T.: 5.370 min
 Delta R.T.: -0.018 min
 Response: 760123
 Conc: 28.34 ng/ml



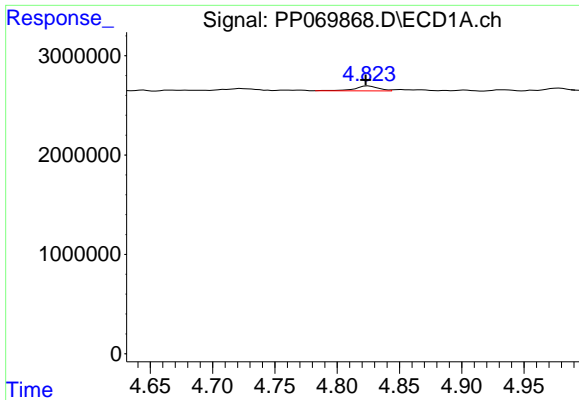
#8 AR-1221-1

R.T.: 0.000 min
 Exp R.T.: 4.737 min
 Response: 0
 Conc: N.D.



#8 AR-1221-1

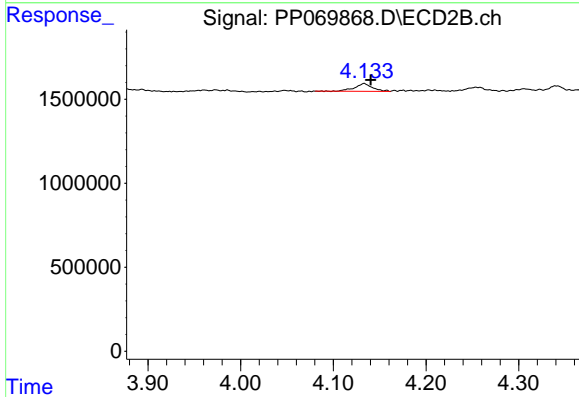
R.T.: 4.047 min
 Delta R.T.: -0.006 min
 Response: 97528
 Conc: 7.92 ng/ml



#9 AR-1221-2

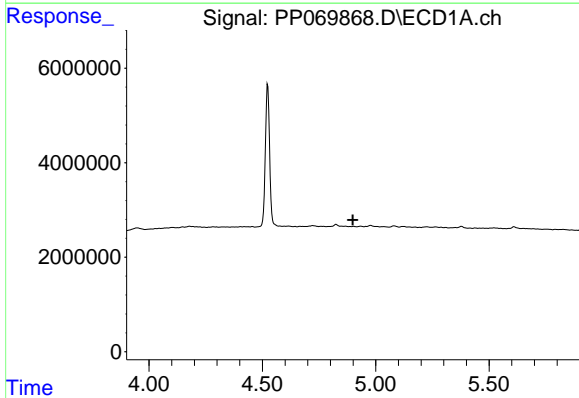
R.T.: 4.825 min
 Delta R.T.: 0.002 min
 Response: 656760
 Conc: 47.96 ng/ml

Instrument :
 ECD_P
 ClientSampleId :
 OU4-PCS-TC-12-021725



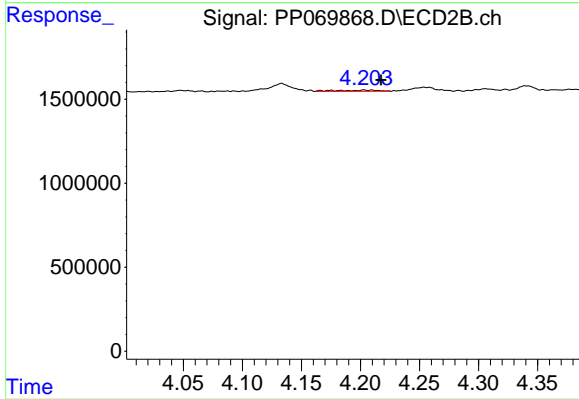
#9 AR-1221-2

R.T.: 4.133 min
 Delta R.T.: -0.007 min
 Response: 622001
 Conc: 64.23 ng/ml



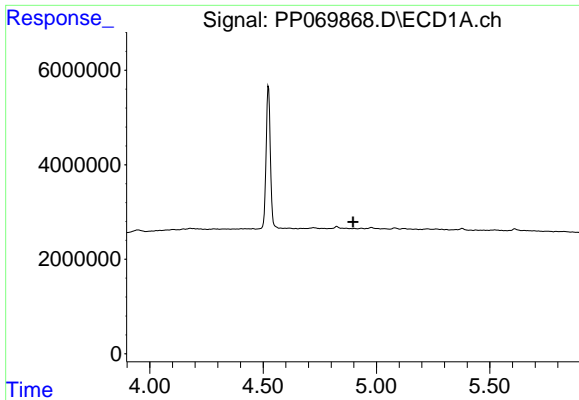
#10 AR-1221-3

R.T.: 0.000 min
 Exp R.T. : 4.899 min
 Response: 0
 Conc: N.D.



#10 AR-1221-3

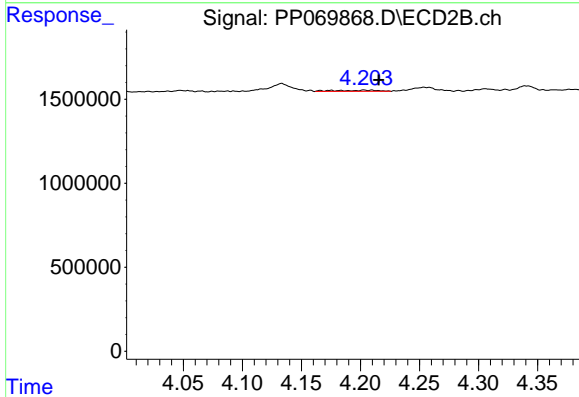
R.T.: 4.203 min
 Delta R.T.: -0.015 min
 Response: 170105
 Conc: 5.83 ng/ml



#11 AR-1232-1

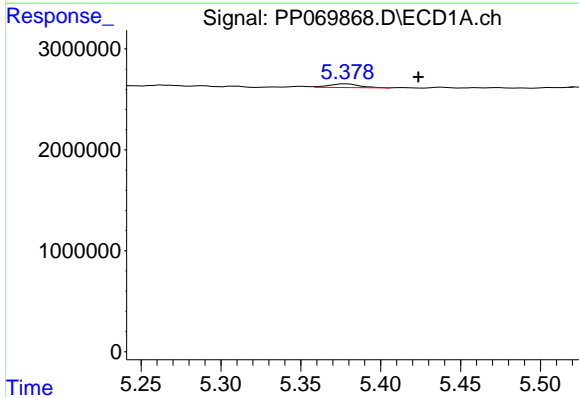
R.T.: 0.000 min
 Exp R.T.: 4.897 min
 Response: 0
 Conc: N.D.

Instrument :
 ECD_P
 ClientSampleId :
 OU4-PCS-TC-12-021725



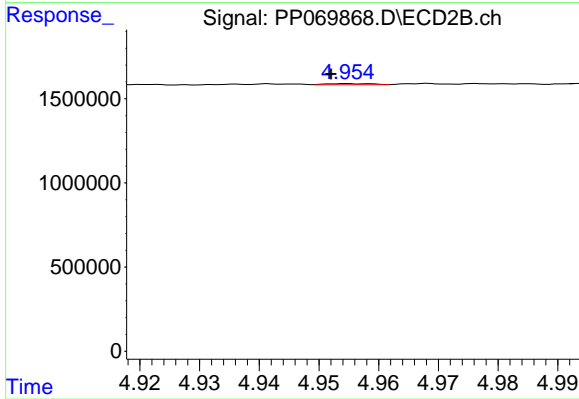
#11 AR-1232-1

R.T.: 4.203 min
 Delta R.T.: -0.012 min
 Response: 170105
 Conc: 7.24 ng/ml



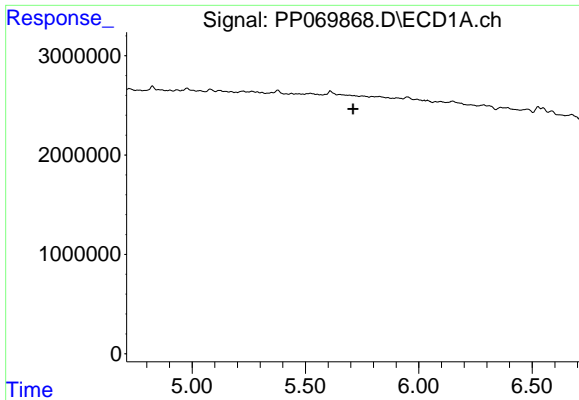
#12 AR-1232-2

R.T.: 5.378 min
 Delta R.T.: -0.045 min
 Response: 466225
 Conc: 28.53 ng/ml



#12 AR-1232-2

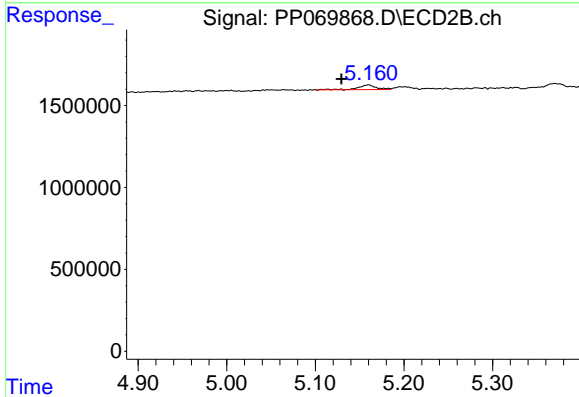
R.T.: 4.955 min
 Delta R.T.: 0.003 min
 Response: 35820
 Conc: 1.52 ng/ml



#13 AR-1232-3

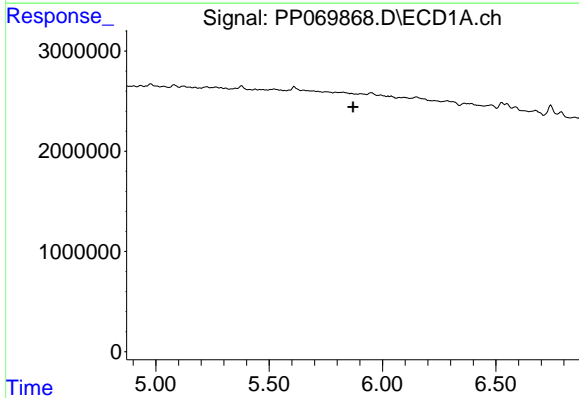
R.T.: 0.000 min
 Exp R.T. : 5.710 min
 Response: 0
 Conc: N.D.

Instrument :
 ECD_P
 ClientSampleId :
 OU4-PCS-TC-12-021725



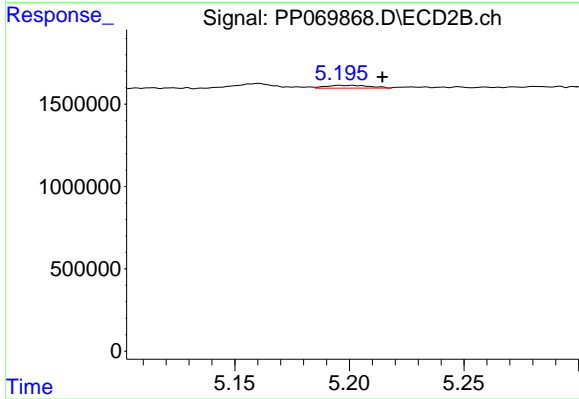
#13 AR-1232-3

R.T.: 5.160 min
 Delta R.T.: 0.031 min
 Response: 398233
 Conc: 30.76 ng/ml



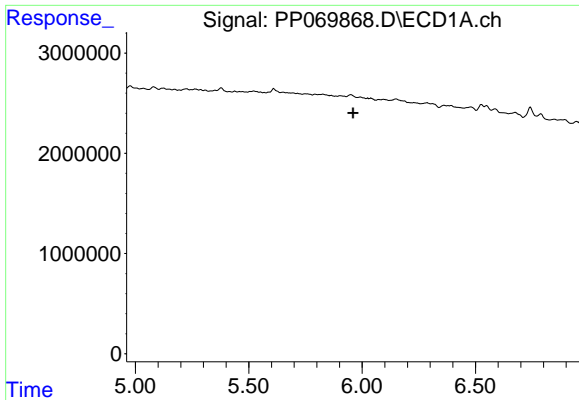
#14 AR-1232-4

R.T.: 0.000 min
 Exp R.T. : 5.870 min
 Response: 0
 Conc: N.D.



#14 AR-1232-4

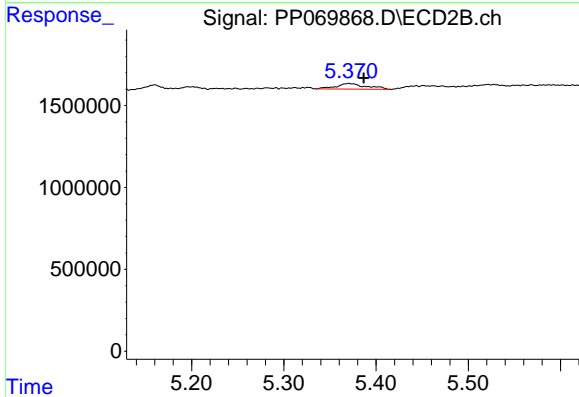
R.T.: 5.201 min
 Delta R.T.: -0.013 min
 Response: 217962
 Conc: 19.66 ng/ml



#15 AR-1232-5

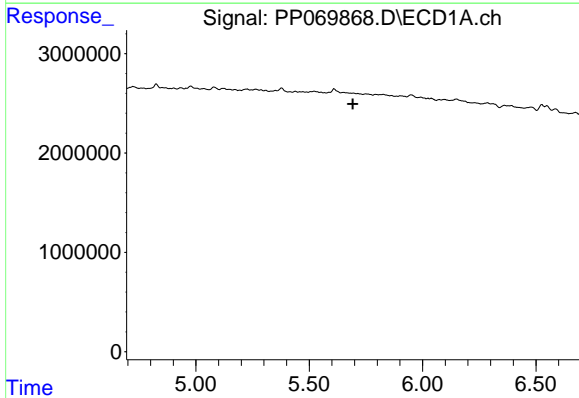
R.T.: 0.000 min
 Exp R.T.: 5.960 min
 Response: 0
 Conc: N.D.

Instrument :
 ECD_P
 ClientSampleId :
 OU4-PCS-TC-12-021725



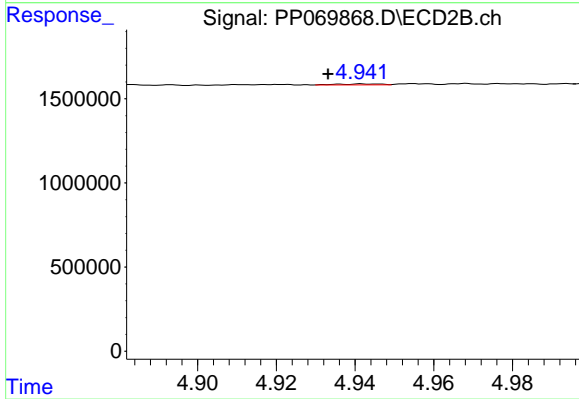
#15 AR-1232-5

R.T.: 5.370 min
 Delta R.T.: -0.016 min
 Response: 760123
 Conc: 62.25 ng/ml



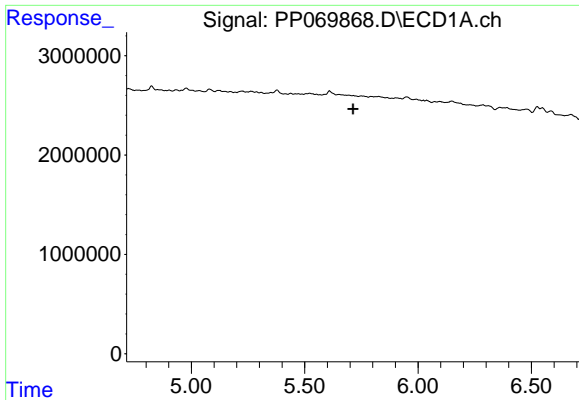
#16 AR-1242-1

R.T.: 0.000 min
 Exp R.T.: 5.692 min
 Response: 0
 Conc: N.D.



#16 AR-1242-1

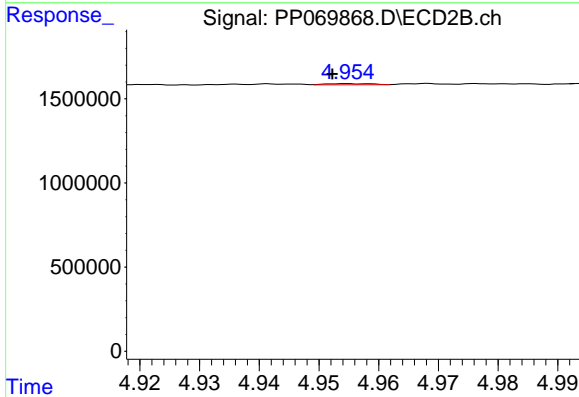
R.T.: 4.942 min
 Delta R.T.: 0.009 min
 Response: 42212
 Conc: 1.46 ng/ml



#17 AR-1242-2

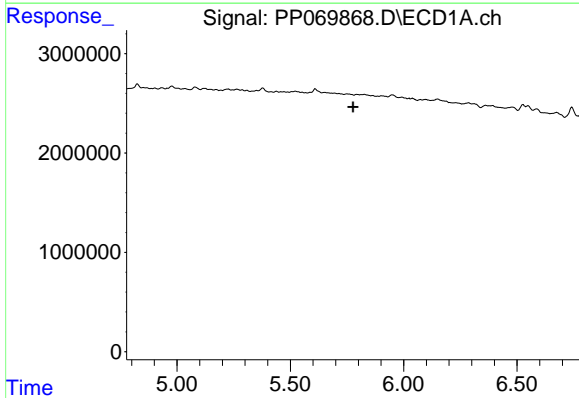
R.T.: 0.000 min
 Exp R.T. : 5.714 min
 Response: 0
 Conc: N.D.

Instrument :
 ECD_P
 ClientSampleId :
 OU4-PCS-TC-12-021725



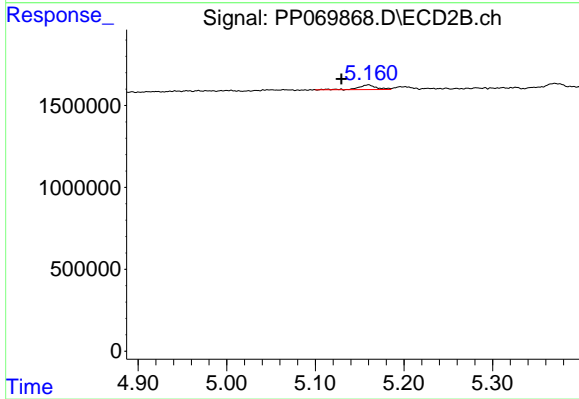
#17 AR-1242-2

R.T.: 4.955 min
 Delta R.T.: 0.003 min
 Response: 35820
 Conc: 0.91 ng/ml



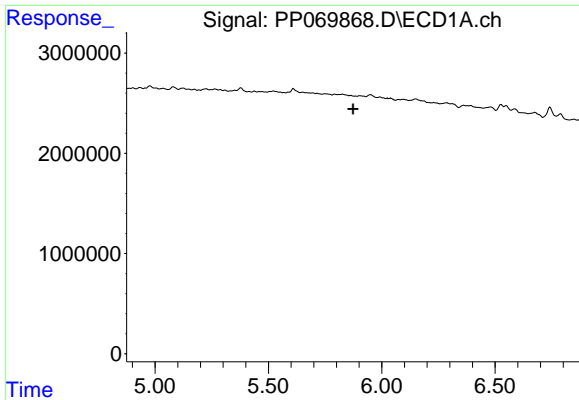
#18 AR-1242-3

R.T.: 0.000 min
 Exp R.T. : 5.776 min
 Response: 0
 Conc: N.D.



#18 AR-1242-3

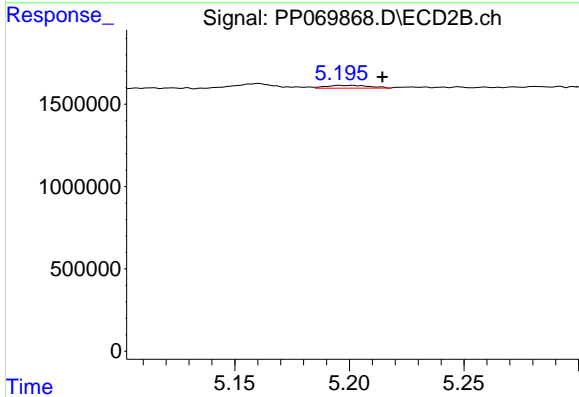
R.T.: 5.160 min
 Delta R.T.: 0.030 min
 Response: 398233
 Conc: 17.70 ng/ml



#19 AR-1242-4

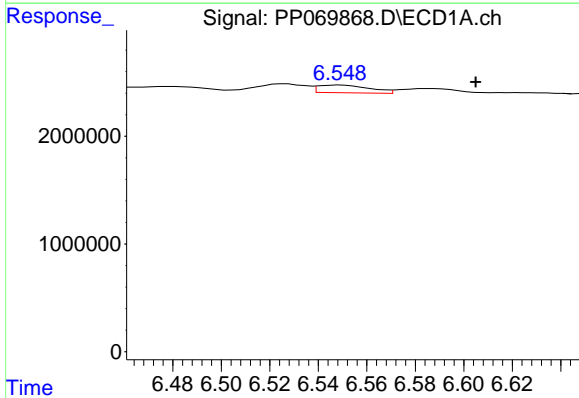
R.T.: 0.000 min
 Exp R.T.: 5.874 min
 Response: 0
 Conc: N.D.

Instrument :
 ECD_P
 ClientSampleId :
 OU4-PCS-TC-12-021725



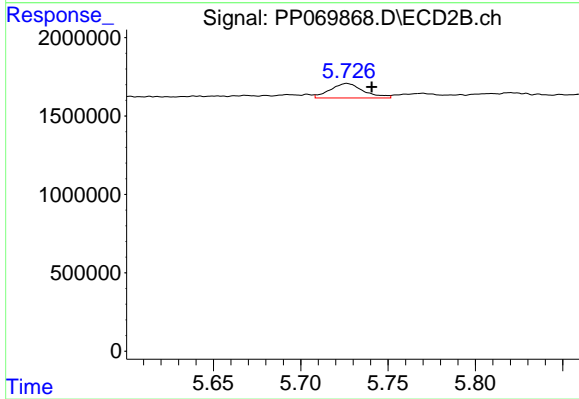
#19 AR-1242-4

R.T.: 5.201 min
 Delta R.T.: -0.013 min
 Response: 217962
 Conc: 10.10 ng/ml



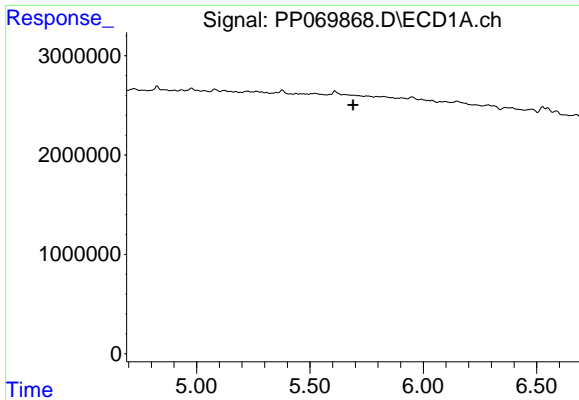
#20 AR-1242-5

R.T.: 6.549 min
 Delta R.T.: -0.056 min
 Response: 1044957
 Conc: 32.07 ng/ml



#20 AR-1242-5

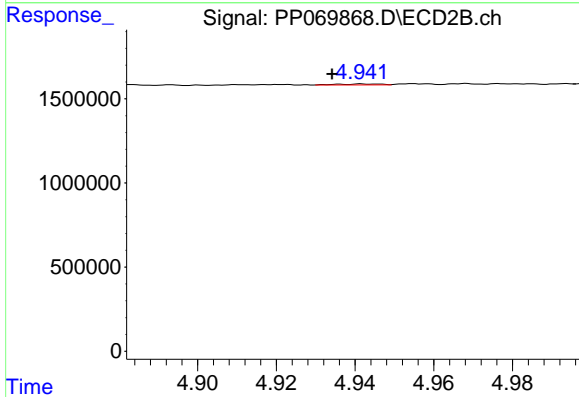
R.T.: 5.726 min
 Delta R.T.: -0.014 min
 Response: 1228647
 Conc: 42.71 ng/ml



#21 AR-1248-1

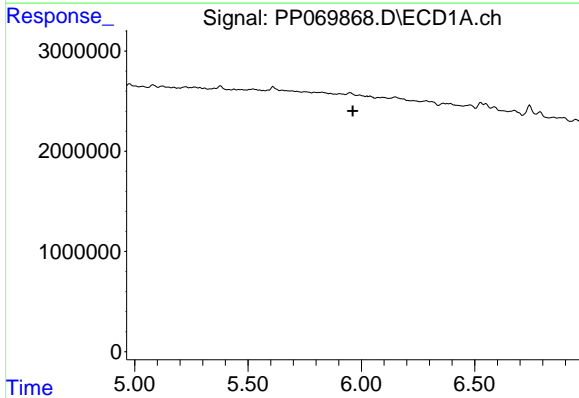
R.T.: 0.000 min
 Exp R.T.: 5.690 min
 Response: 0
 Conc: N.D.

Instrument : ECD_P
 ClientSampleId : OU4-PCS-TC-12-021725



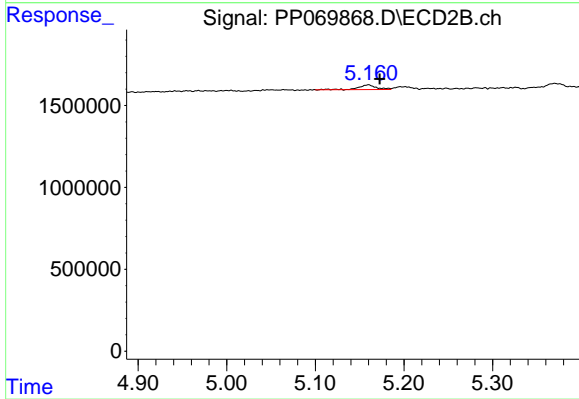
#21 AR-1248-1

R.T.: 4.942 min
 Delta R.T.: 0.008 min
 Response: 42212
 Conc: 1.92 ng/ml



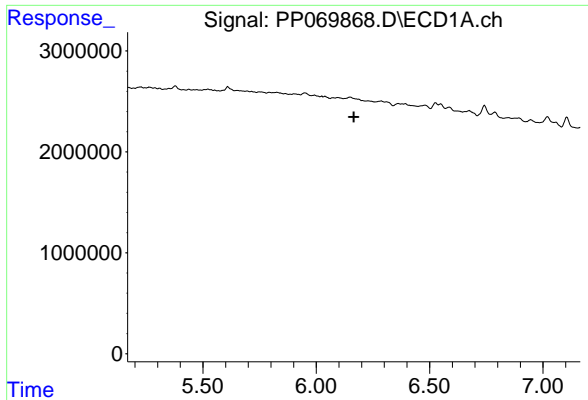
#22 AR-1248-2

R.T.: 0.000 min
 Exp R.T.: 5.963 min
 Response: 0
 Conc: N.D.



#22 AR-1248-2

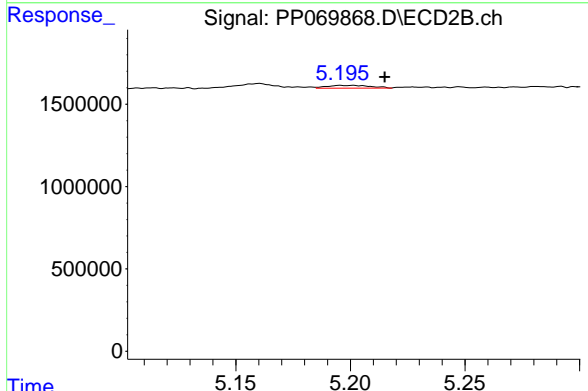
R.T.: 5.160 min
 Delta R.T.: -0.013 min
 Response: 398233
 Conc: 13.25 ng/ml



#23 AR-1248-3

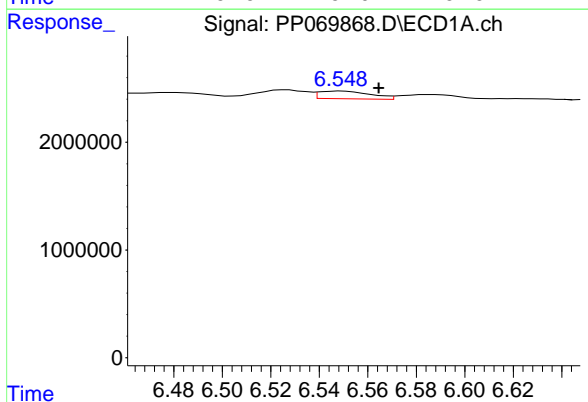
R.T.: 0.000 min
 Exp R.T.: 6.166 min
 Response: 0
 Conc: N.D.

Instrument :
 ECD_P
 ClientSampleId :
 OU4-PCS-TC-12-021725



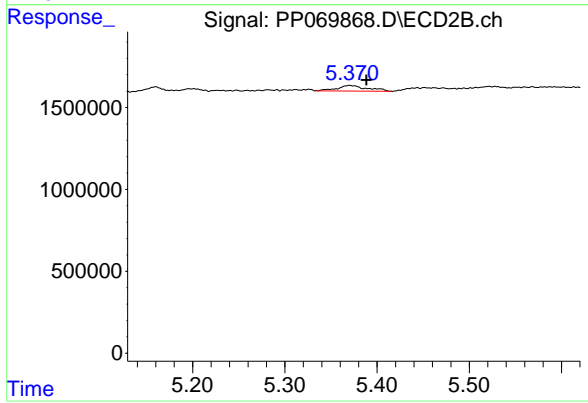
#23 AR-1248-3

R.T.: 5.201 min
 Delta R.T.: -0.014 min
 Response: 217962
 Conc: 7.03 ng/ml



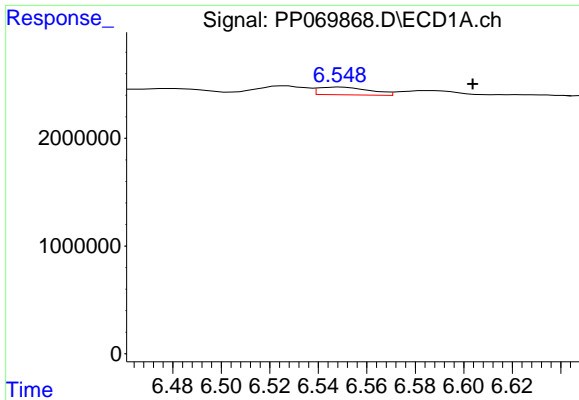
#24 AR-1248-4

R.T.: 6.549 min
 Delta R.T.: -0.015 min
 Response: 1044957
 Conc: 18.96 ng/ml



#24 AR-1248-4

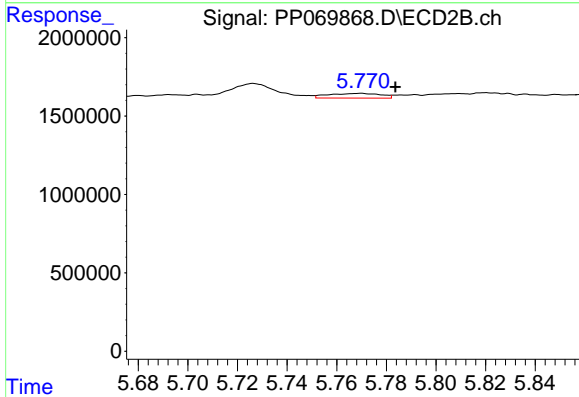
R.T.: 5.370 min
 Delta R.T.: -0.018 min
 Response: 760123
 Conc: 20.58 ng/ml



#25 AR-1248-5

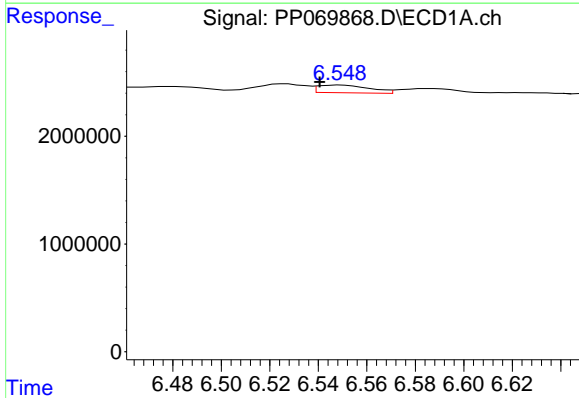
R.T.: 6.549 min
 Delta R.T.: -0.054 min
 Response: 1044957
 Conc: 19.57 ng/ml

Instrument :
 ECD_P
 ClientSampleId :
 OU4-PCS-TC-12-021725



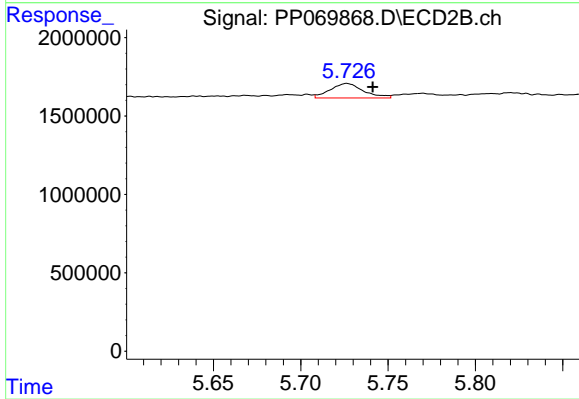
#25 AR-1248-5

R.T.: 5.770 min
 Delta R.T.: -0.014 min
 Response: 440192
 Conc: 11.77 ng/ml



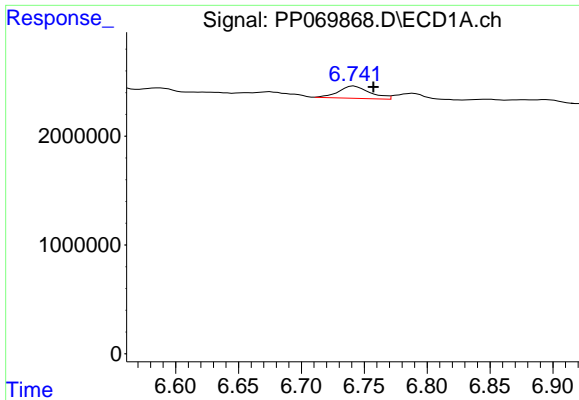
#26 AR-1254-1

R.T.: 6.549 min
 Delta R.T.: 0.009 min
 Response: 1044957
 Conc: 18.06 ng/ml



#26 AR-1254-1

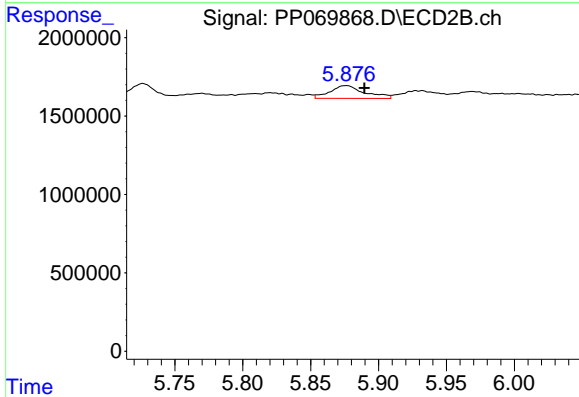
R.T.: 5.726 min
 Delta R.T.: -0.015 min
 Response: 1228647
 Conc: 22.32 ng/ml



#27 AR-1254-2

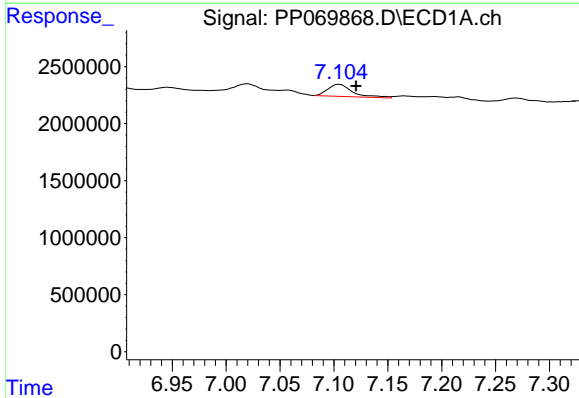
R.T.: 6.742 min
 Delta R.T.: -0.015 min
 Response: 1983077
 Conc: 24.71 ng/ml

Instrument :
 ECD_P
 ClientSampleId :
 OU4-PCS-TC-12-021725



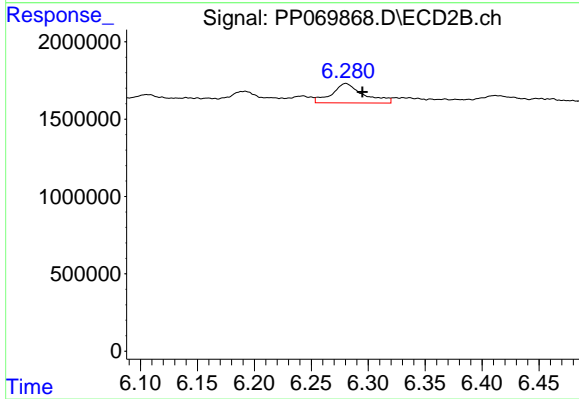
#27 AR-1254-2

R.T.: 5.876 min
 Delta R.T.: -0.014 min
 Response: 1456696
 Conc: 30.12 ng/ml



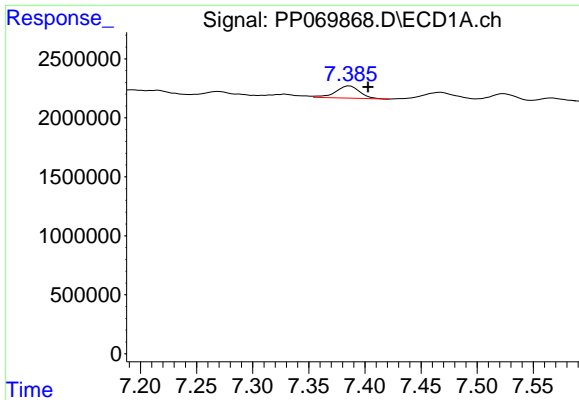
#28 AR-1254-3

R.T.: 7.105 min
 Delta R.T.: -0.015 min
 Response: 1686196
 Conc: 20.01 ng/ml



#28 AR-1254-3

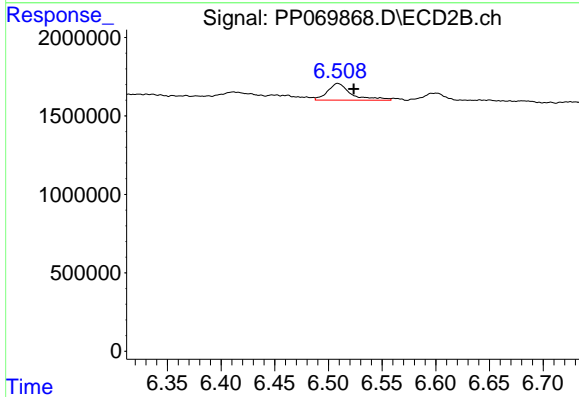
R.T.: 6.280 min
 Delta R.T.: -0.015 min
 Response: 2418836
 Conc: 31.87 ng/ml



#29 AR-1254-4

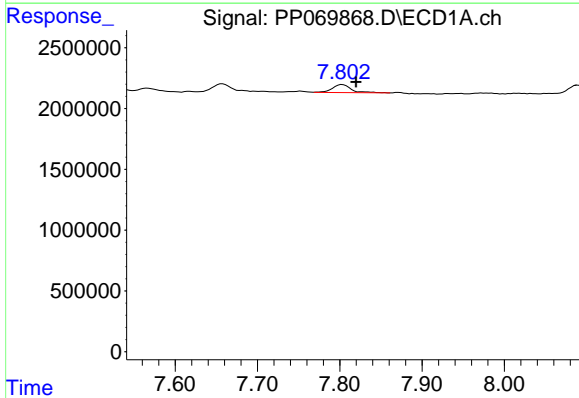
R.T.: 7.386 min
 Delta R.T.: -0.016 min
 Response: 1570588
 Conc: 23.03 ng/ml

Instrument :
 ECD_P
 ClientSampleId :
 OU4-PCS-TC-12-021725



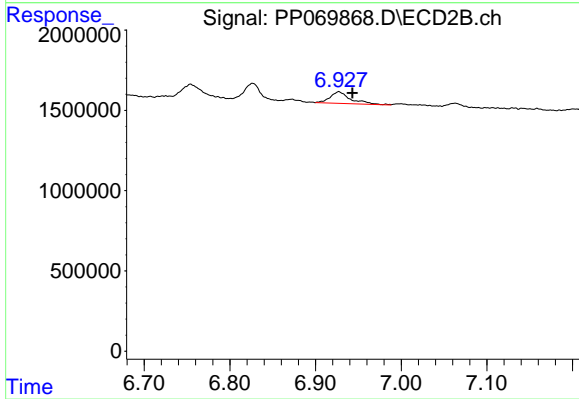
#29 AR-1254-4

R.T.: 6.509 min
 Delta R.T.: -0.015 min
 Response: 1645823
 Conc: 32.11 ng/ml



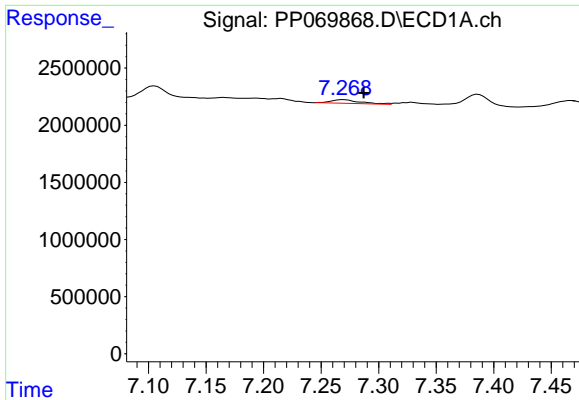
#30 AR-1254-5

R.T.: 7.803 min
 Delta R.T.: -0.017 min
 Response: 1055822
 Conc: 15.52 ng/ml



#30 AR-1254-5

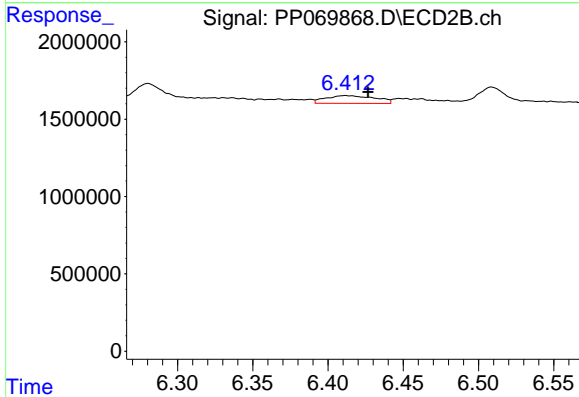
R.T.: 6.927 min
 Delta R.T.: -0.016 min
 Response: 1217174
 Conc: 18.29 ng/ml



#31 AR-1260-1

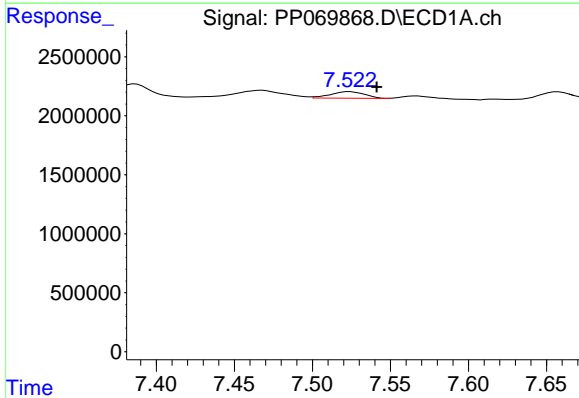
R.T.: 7.270 min
 Delta R.T.: -0.017 min
 Response: 558334
 Conc: 9.55 ng/ml

Instrument :
 ECD_P
 ClientSampleId :
 OU4-PCS-TC-12-021725



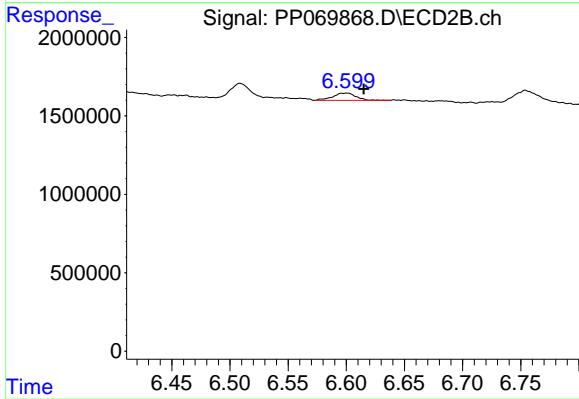
#31 AR-1260-1

R.T.: 6.412 min
 Delta R.T.: -0.015 min
 Response: 1137853
 Conc: 23.59 ng/ml



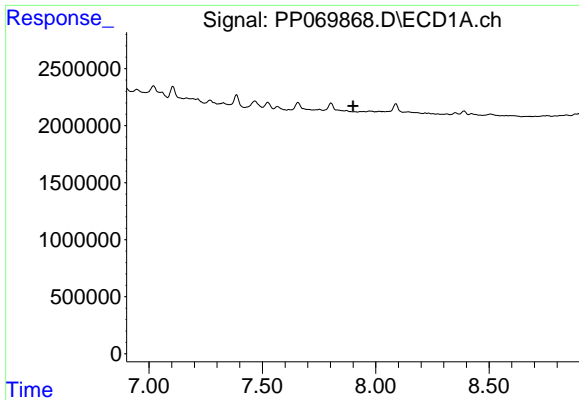
#32 AR-1260-2

R.T.: 7.524 min
 Delta R.T.: -0.017 min
 Response: 855034
 Conc: 10.99 ng/ml



#32 AR-1260-2

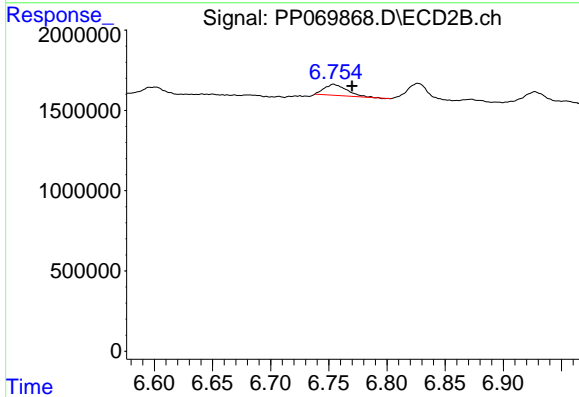
R.T.: 6.601 min
 Delta R.T.: -0.014 min
 Response: 633286
 Conc: 10.33 ng/ml



#33 AR-1260-3

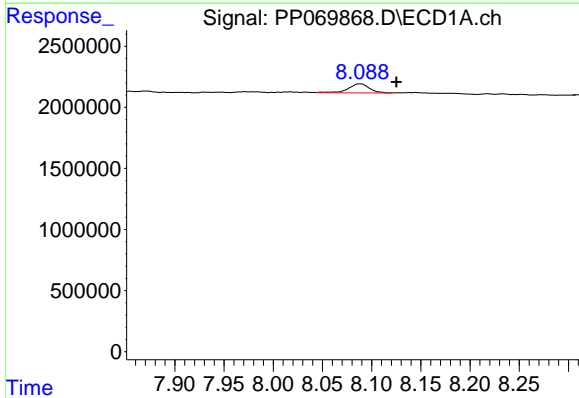
R.T.: 0.000 min
 Exp R.T.: 7.900 min
 Response: 0
 Conc: N.D.

Instrument : ECD_P
 ClientSampleId : OU4-PCS-TC-12-021725



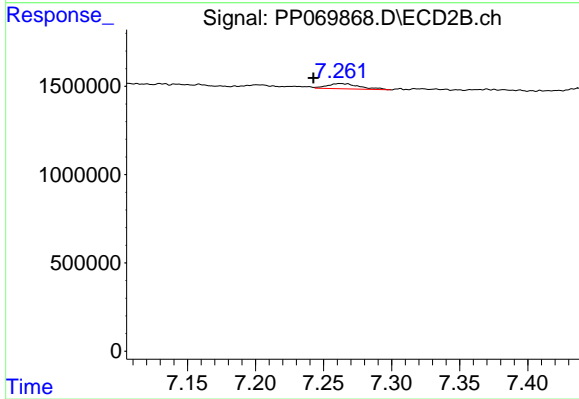
#33 AR-1260-3

R.T.: 6.754 min
 Delta R.T.: -0.016 min
 Response: 924792
 Conc: 15.37 ng/ml



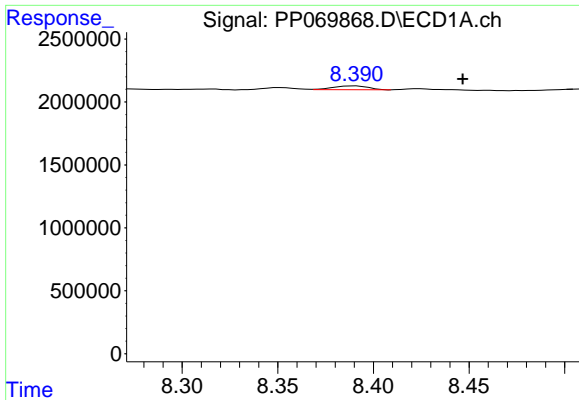
#34 AR-1260-4

R.T.: 8.089 min
 Delta R.T.: -0.036 min
 Response: 1108356
 Conc: 16.80 ng/ml



#34 AR-1260-4

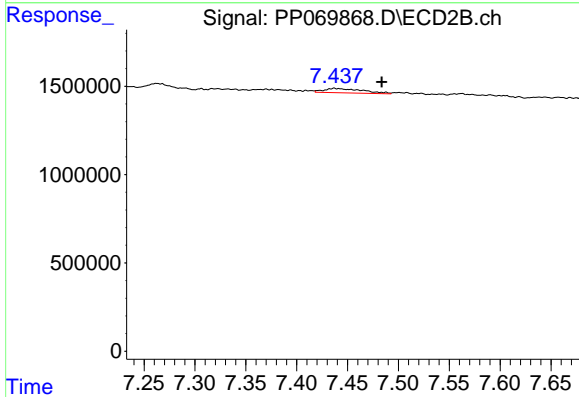
R.T.: 7.262 min
 Delta R.T.: 0.020 min
 Response: 479999
 Conc: 10.33 ng/ml



#35 AR-1260-5

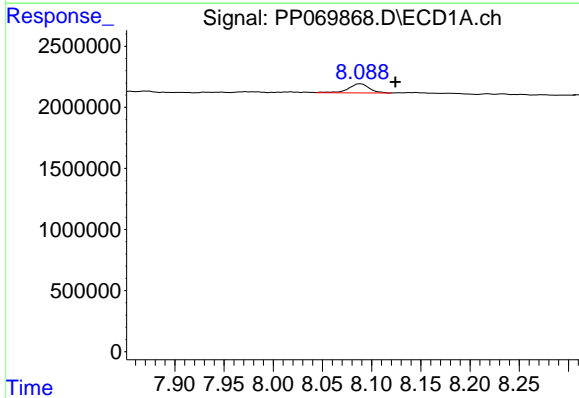
R.T.: 8.391 min
 Delta R.T.: -0.056 min
 Response: 397624
 Conc: 3.04 ng/ml

Instrument :
 ECD_P
 ClientSampleId :
 OU4-PCS-TC-12-021725



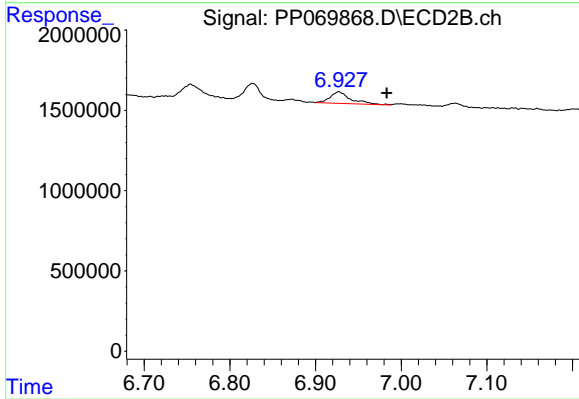
#35 AR-1260-5

R.T.: 7.437 min
 Delta R.T.: -0.047 min
 Response: 670977
 Conc: 6.04 ng/ml



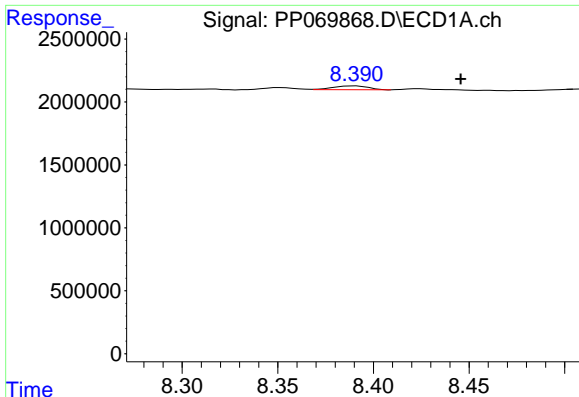
#36 AR-1262-1

R.T.: 8.089 min
 Delta R.T.: -0.035 min
 Response: 1108356
 Conc: 14.03 ng/ml



#36 AR-1262-1

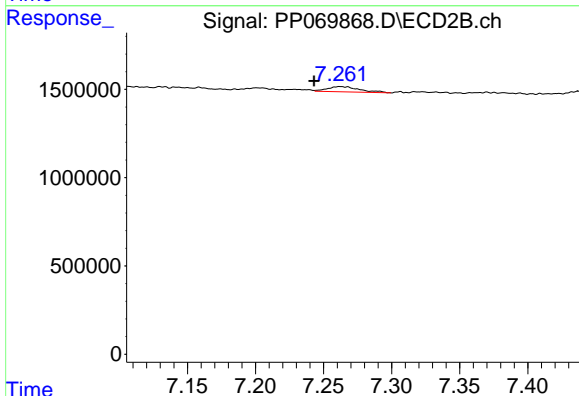
R.T.: 6.927 min
 Delta R.T.: -0.056 min
 Response: 1217174
 Conc: 17.14 ng/ml



#37 AR-1262-2

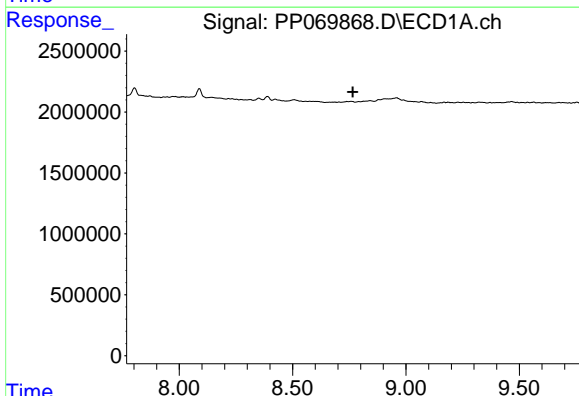
R.T.: 8.391 min
 Delta R.T.: -0.055 min
 Response: 397624
 Conc: 2.60 ng/ml

Instrument :
 ECD_P
 ClientSampleId :
 OU4-PCS-TC-12-021725



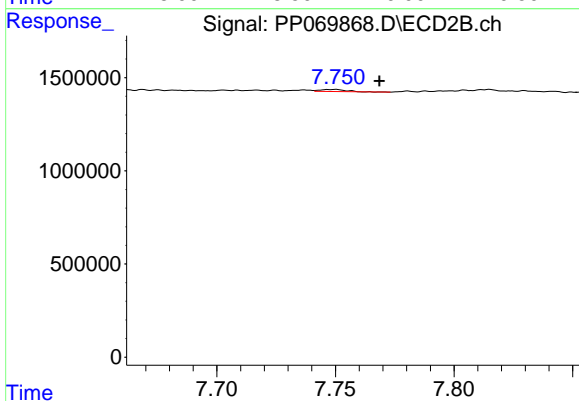
#37 AR-1262-2

R.T.: 7.262 min
 Delta R.T.: 0.019 min
 Response: 479999
 Conc: 7.87 ng/ml



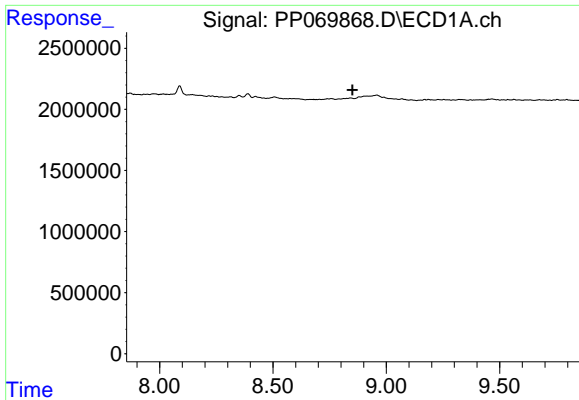
#38 AR-1262-3

R.T.: 0.000 min
 Exp R.T. : 8.766 min
 Response: 0
 Conc: N.D.



#38 AR-1262-3

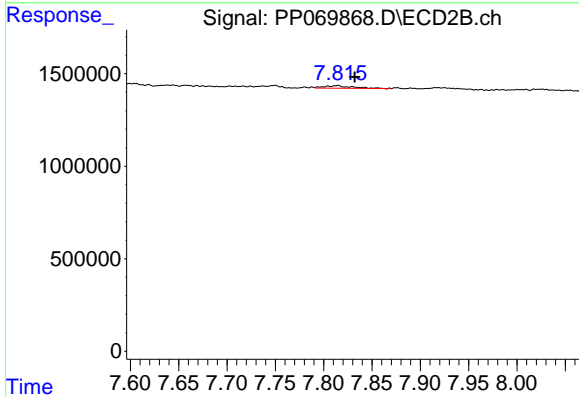
R.T.: 7.749 min
 Delta R.T.: -0.019 min
 Response: 83121
 Conc: 1.59 ng/ml



#39 AR-1262-4

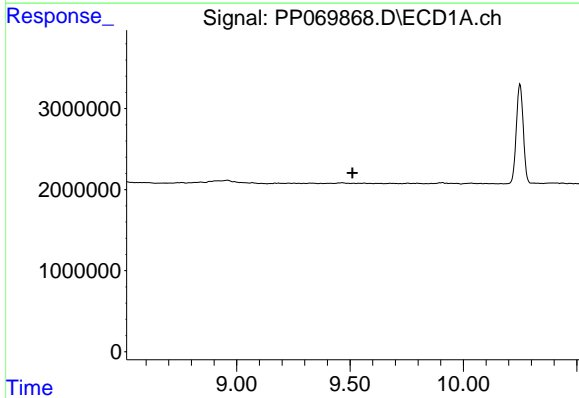
R.T.: 0.000 min
 Exp R.T. : 8.852 min
 Response: 0
 Conc: N.D.

Instrument :
 ECD_P
 ClientSampleId :
 OU4-PCS-TC-12-021725



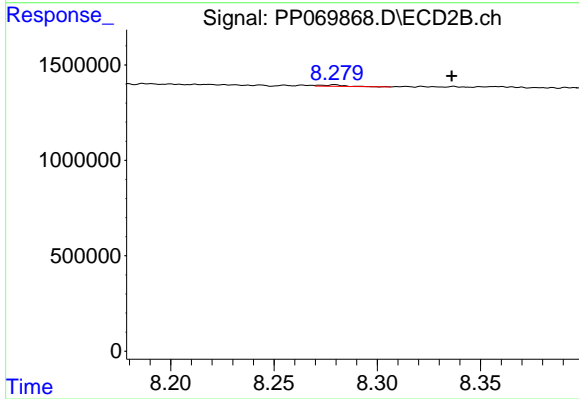
#39 AR-1262-4

R.T.: 7.815 min
 Delta R.T.: -0.017 min
 Response: 276557
 Conc: 2.99 ng/ml



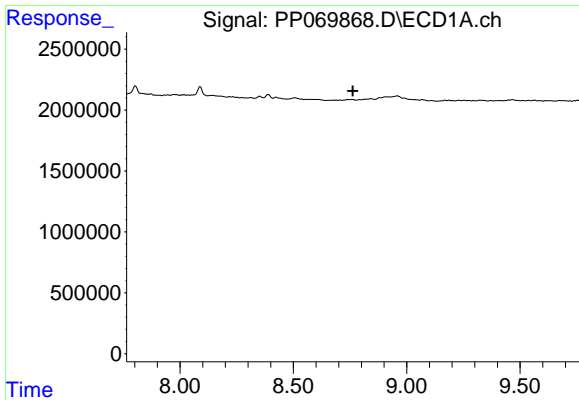
#40 AR-1262-5

R.T.: 0.000 min
 Exp R.T. : 9.511 min
 Response: 0
 Conc: N.D.



#40 AR-1262-5

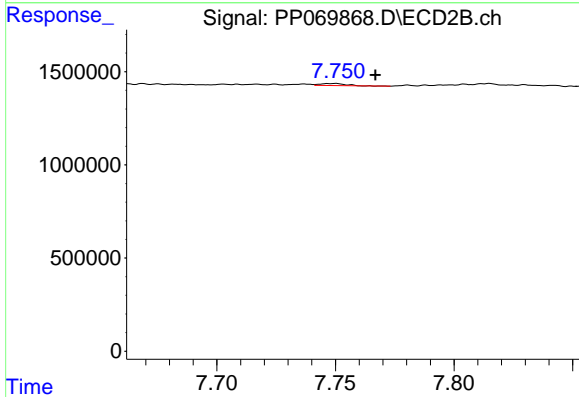
R.T.: 8.280 min
 Delta R.T.: -0.056 min
 Response: 58010
 Conc: 1.21 ng/ml



#41 AR-1268-1

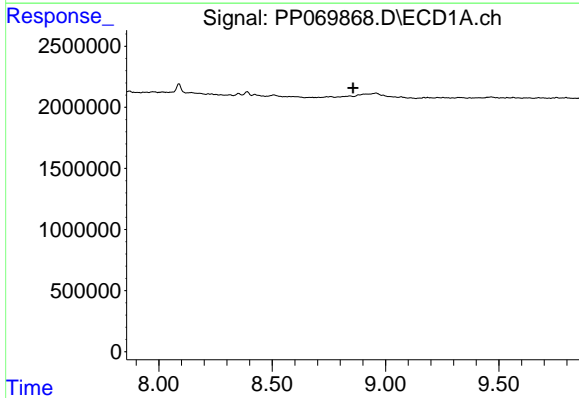
R.T.: 0.000 min
 Exp R.T.: 8.763 min
 Response: 0
 Conc: N.D.

Instrument : ECD_P
 ClientSampleId : OU4-PCS-TC-12-021725



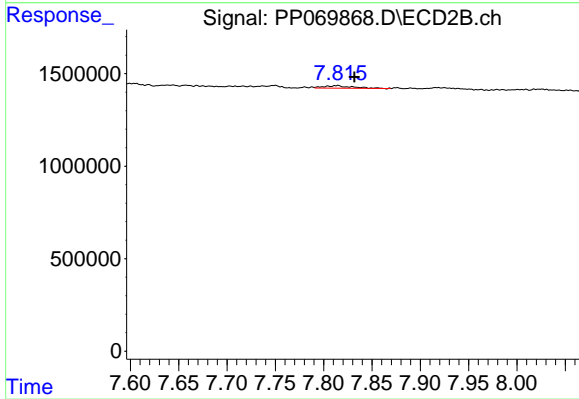
#41 AR-1268-1

R.T.: 7.749 min
 Delta R.T.: -0.017 min
 Response: 83121
 Conc: 0.57 ng/ml



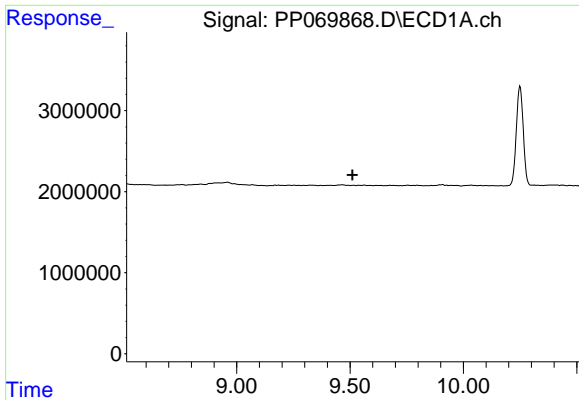
#42 AR-1268-2

R.T.: 0.000 min
 Exp R.T.: 8.857 min
 Response: 0
 Conc: N.D.



#42 AR-1268-2

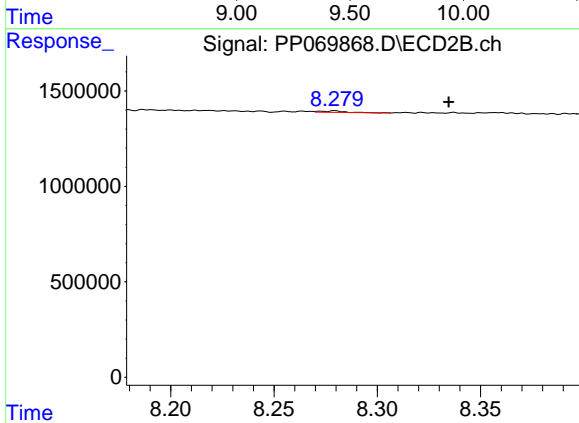
R.T.: 7.815 min
 Delta R.T.: -0.017 min
 Response: 276557
 Conc: 2.08 ng/ml



#44 AR-1268-4

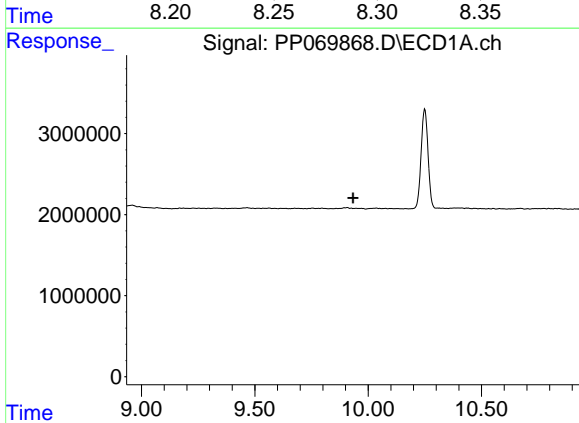
R.T.: 0.000 min
 Exp R.T.: 9.511 min
 Response: 0
 Conc: N.D.

Instrument :
 ECD_P
 ClientSampleId :
 OU4-PCS-TC-12-021725



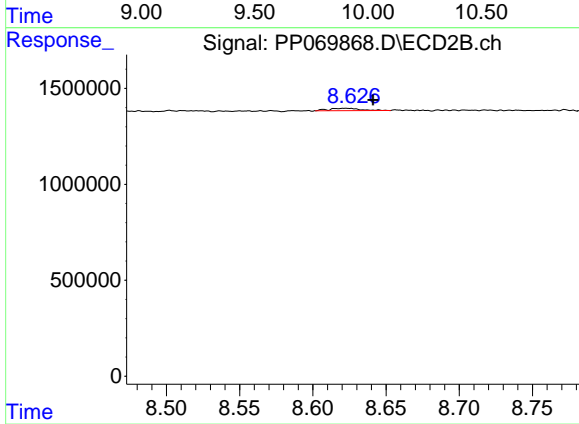
#44 AR-1268-4

R.T.: 8.280 min
 Delta R.T.: -0.055 min
 Response: 58010
 Conc: 1.11 ng/ml



#45 AR-1268-5

R.T.: 0.000 min
 Exp R.T.: 9.933 min
 Response: 0
 Conc: N.D.



#45 AR-1268-5

R.T.: 8.622 min
 Delta R.T.: -0.019 min
 Response: 185648
 Conc: 0.52 ng/ml