

Data Path : Z:\pestpcbsrv\HPCHEM1\ECD\_P\Data\PP021925\  
 Data File : PP069870.D  
 Signal(s) : Signal #1: ECD1A.ch Signal #2: ECD2B.ch  
 Acq On : 20 Feb 2025 00:05  
 Operator : YP\AJ  
 Sample : Q1383-07  
 Misc :  
 ALS Vial : 35 Sample Multiplier: 1

Instrument :  
 ECD\_P  
 ClientSampleId :  
 OU4-PCS-TC-14-021725

Integration File signal 1: autoint1.e  
 Integration File signal 2: autoint2.e  
 Quant Time: Feb 22 01:36:45 2025  
 Quant Method : Z:\pestpcbsrv\HPCHEM1\ECD\_P\methods\PP012825.M  
 Quant Title : GC EXTRACTABLES  
 QLast Update : Wed Jan 29 00:13:21 2025  
 Response via : Initial Calibration  
 Integrator: ChemStation

Volume Inj. : 2 µl  
 Signal #1 Phase : ZB-MR1 Signal #2 Phase: ZB-MR2  
 Signal #1 Info : 30Mx0.32mmx 0.50µ Signal #2 Info : 30M x 0.32mm x 0.25µm

Compound	RT#1	RT#2	Resp#1	Resp#2	ng/ml	ng/ml
System Monitoring Compounds						
1) SA Tetrachlo...	4.526	3.829	40024662	22908145	27.960	25.666
2) SA Decachlor...	10.251	8.888	27093280	27399421	24.790	24.497
Target Compounds						
3) L1 AR-1016-1	0.000	4.943	0	51918	N.D.	1.592 #
4) L1 AR-1016-2	0.000	4.943	0	51918	N.D.	1.155 #
5) L1 AR-1016-3	0.000	5.161	0	340458	N.D.	13.682 #
6) L1 AR-1016-4	0.000	5.161	0	340458	N.D.	16.857 #
7) L1 AR-1016-5	0.000	5.399	0	179524	N.D.	6.693 #
8) L2 AR-1221-1	0.000	4.048	0	21153	N.D.	1.717 #
9) L2 AR-1221-2	4.827	4.132	618459	490569	45.168	50.661
10) L2 AR-1221-3	0.000	4.196	0	82068	N.D.	2.813 #
11) L3 AR-1232-1	4.827f	4.196	618459	82068	18.576	3.495 #
12) L3 AR-1232-2	5.382f	4.943	552230	51918	33.792	2.203 #
13) L3 AR-1232-3	0.000	5.161	0	340458	N.D.	26.296 #
14) L3 AR-1232-4	0.000	5.219	0	26959	N.D.	2.432 #
15) L3 AR-1232-5	0.000	5.399	0	179524	N.D.	14.703 #
16) L4 AR-1242-1	0.000	4.943	0	51918	N.D.	1.801 #
17) L4 AR-1242-2	0.000	4.943	0	51918	N.D.	1.318 #
18) L4 AR-1242-3	0.000	5.161	0	340458	N.D.	15.129 #
19) L4 AR-1242-4	0.000	5.219	0	26959	N.D.	1.249 #
20) L4 AR-1242-5	0.000	5.726	0	643390	N.D.	22.364 #
21) L5 AR-1248-1	0.000	4.943	0	51918	N.D.	2.359 #
22) L5 AR-1248-2	0.000	5.161	0	340458	N.D.	11.324 #
23) L5 AR-1248-3	0.000	5.219	0	26959	N.D.	0.870 #
24) L5 AR-1248-4	6.527f	5.399	2153165	179524	39.062	4.859 #
25) L5 AR-1248-5	0.000	5.765	0	171732	N.D.	4.593 #
26) L6 AR-1254-1	6.527	5.726	2153165	643390	37.211	11.686 #
27) L6 AR-1254-2	6.743	5.875	1240828	620370	15.464	12.826
28) L6 AR-1254-3	7.106	6.280	1141912	1418877	13.548	18.695 #
29) L6 AR-1254-4	7.390	6.508	802739	905710	11.772	17.672 #
30) L6 AR-1254-5	7.806	6.927	899726	773572	13.222	11.622
31) L7 AR-1260-1	0.000	6.407	0	1331537	N.D.	27.608 #
32) L7 AR-1260-2	7.526	6.597	730627	454968	9.390	7.422
33) L7 AR-1260-3	0.000	6.752	0	747168	N.D.	12.420 #
34) L7 AR-1260-4	8.090f	7.263	988817	427527	14.987	9.201 #
35) L7 AR-1260-5	8.393f	7.448f	301737	324392	2.305	2.919 #
36) L8 AR-1262-1	8.090	7.001	988817	121521	12.514	1.711 #
37) L8 AR-1262-2	8.393f	7.263	301737	427527	1.973	7.011 #
38) L8 AR-1262-3	0.000	7.747	0	197703	N.D.	3.780 #
39) L8 AR-1262-4	0.000	7.812	0	123673	N.D.	1.338 #
40) L8 AR-1262-5	0.000	8.346	0	160708	N.D.	3.363 #
41) L9 AR-1268-1	0.000	7.747	0	197703	N.D.	1.362 #

Data Path : Z:\pestpcbsrv\HPCHEM1\ECD\_P\Data\PP021925\  
 Data File : PP069870.D  
 Signal(s) : Signal #1: ECD1A.ch Signal #2: ECD2B.ch  
 Acq On : 20 Feb 2025 00:05  
 Operator : YP\AJ  
 Sample : Q1383-07  
 Misc :  
 ALS Vial : 35 Sample Multiplier: 1

Instrument :  
 ECD\_P  
 ClientSampleId :  
 OU4-PCS-TC-14-021725

Integration File signal 1: autoint1.e  
 Integration File signal 2: autoint2.e  
 Quant Time: Feb 22 01:36:45 2025  
 Quant Method : Z:\pestpcbsrv\HPCHEM1\ECD\_P\methods\PP012825.M  
 Quant Title : GC EXTRACTABLES  
 QLast Update : Wed Jan 29 00:13:21 2025  
 Response via : Initial Calibration  
 Integrator: ChemStation

Volume Inj. : 2 µl  
 Signal #1 Phase : ZB-MR1 Signal #2 Phase: ZB-MR2  
 Signal #1 Info : 30Mx0.32mmx 0.50µ Signal #2 Info : 30M x 0.32mm x 0.25µm

	Compound	RT#1	RT#2	Resp#1	Resp#2	ng/ml	ng/ml
42)	L9 AR-1268-2	0.000	7.812	0	123673	N.D.	0.931 #
43)	L9 AR-1268-3	0.000	8.023	0	125136	N.D.	1.100 #
44)	L9 AR-1268-4	0.000	8.346	0	160708	N.D.	3.086 #
45)	L9 AR-1268-5	0.000	8.620	0	188065	N.D.	0.528 #

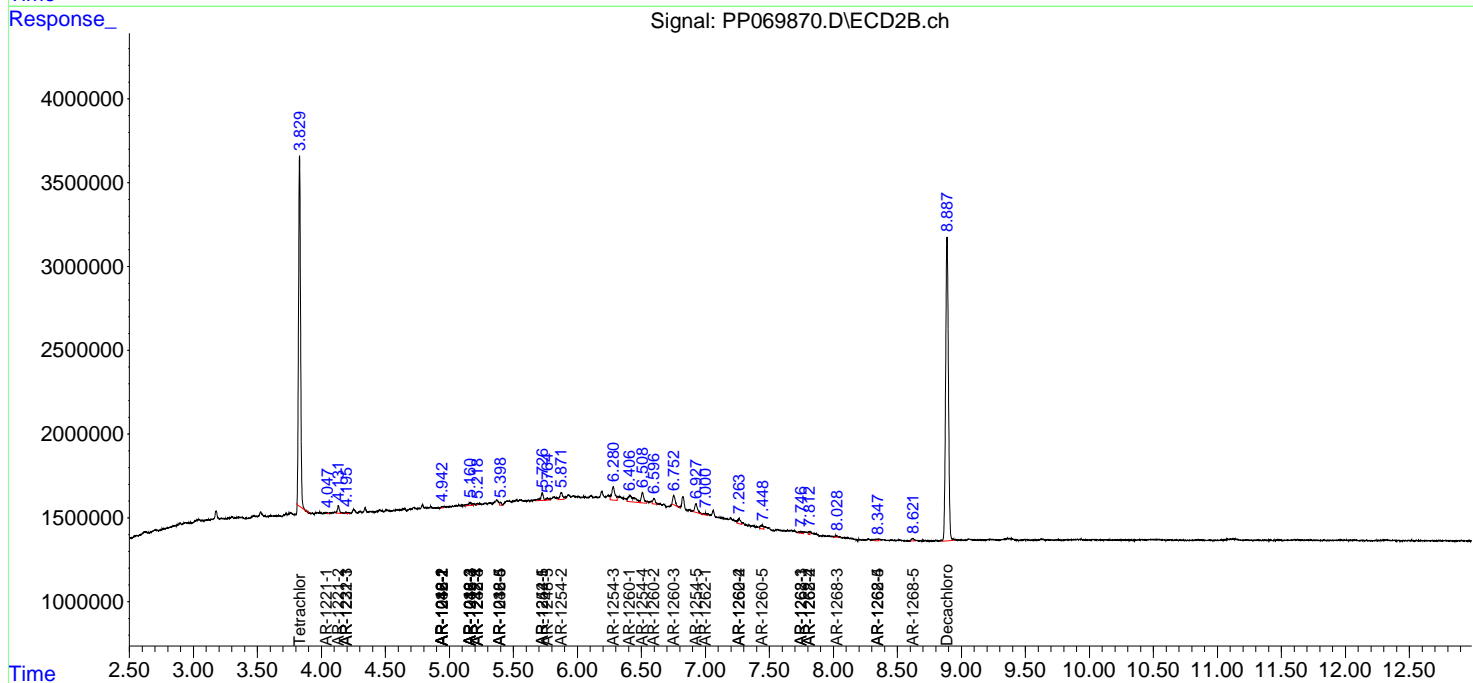
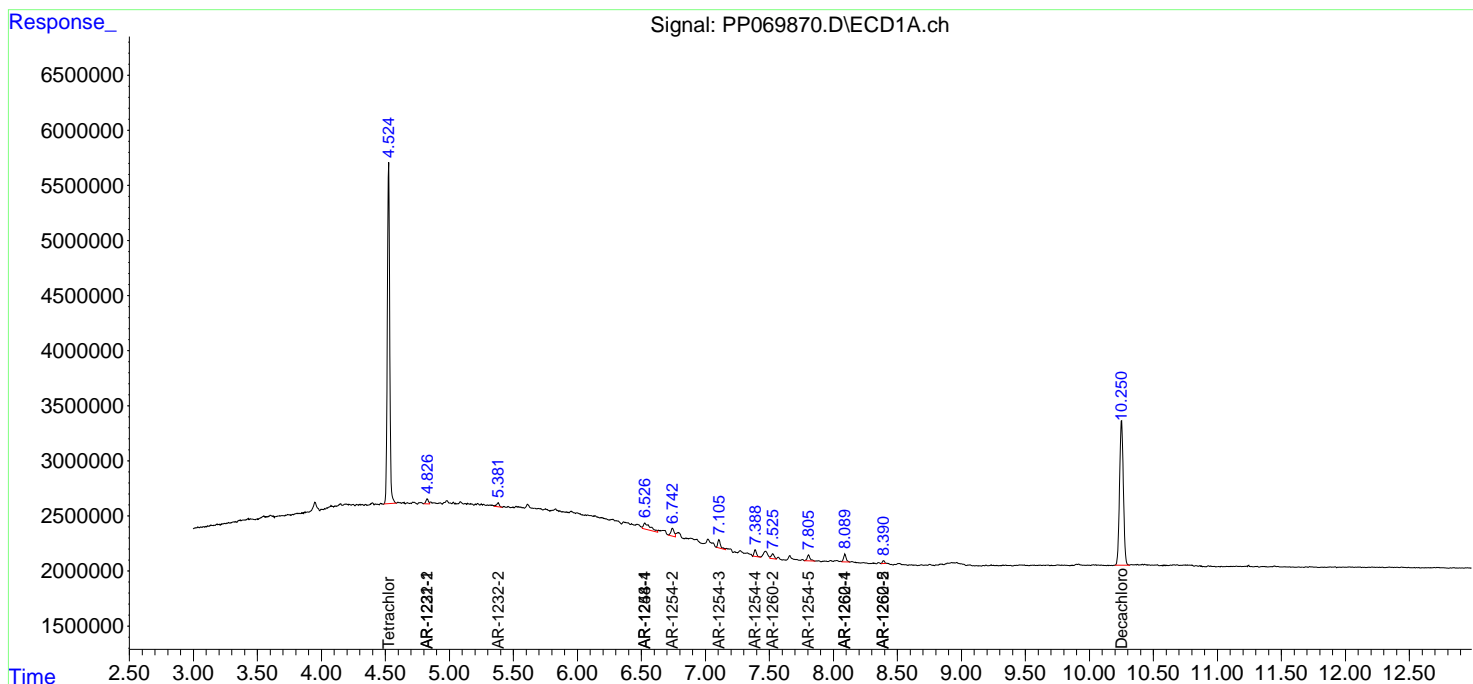
(f)=RT Delta > 1/2 Window (#)=Amounts differ by > 25% (m)=manual int.

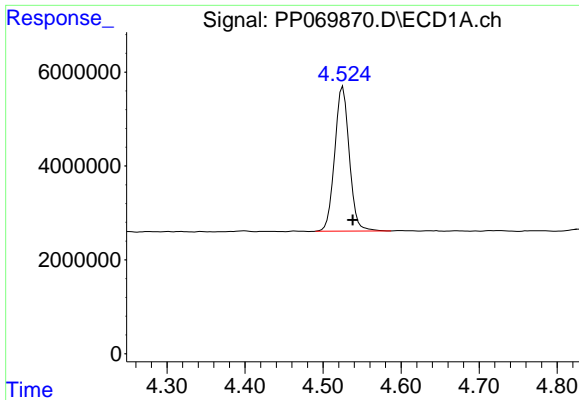
Data Path : Z:\pestpcbsrv\HPCHEM1\ECD\_P\Data\PP021925\  
 Data File : PP069870.D  
 Signal(s) : Signal #1: ECD1A.ch Signal #2: ECD2B.ch  
 Acq On : 20 Feb 2025 00:05  
 Operator : YP\AJ  
 Sample : Q1383-07  
 Misc :  
 ALS Vial : 35 Sample Multiplier: 1

Instrument :  
 ECD\_P  
 ClientSampleId :  
 OU4-PCS-TC-14-021725

Integration File signal 1: autoint1.e  
 Integration File signal 2: autoint2.e  
 Quant Time: Feb 22 01:36:45 2025  
 Quant Method : Z:\pestpcbsrv\HPCHEM1\ECD\_P\methods\PP012825.M  
 Quant Title : GC EXTRACTABLES  
 QLast Update : Wed Jan 29 00:13:21 2025  
 Response via : Initial Calibration  
 Integrator: ChemStation

Volume Inj. : 2 µl  
 Signal #1 Phase : ZB-MR1 Signal #2 Phase: ZB-MR2  
 Signal #1 Info : 30Mx0.32mmx 0.50µ Signal #2 Info : 30M x 0.32mm x 0.25µm

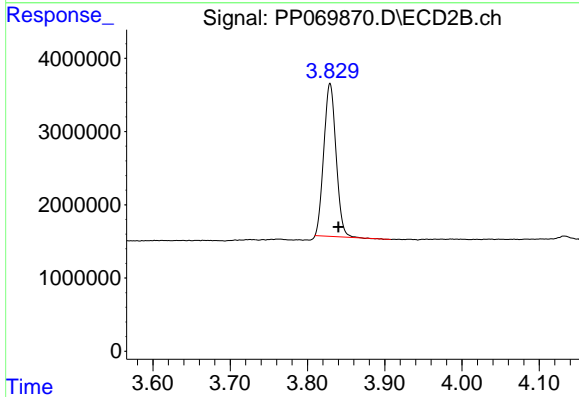




#1 Tetrachloro-m-xylene

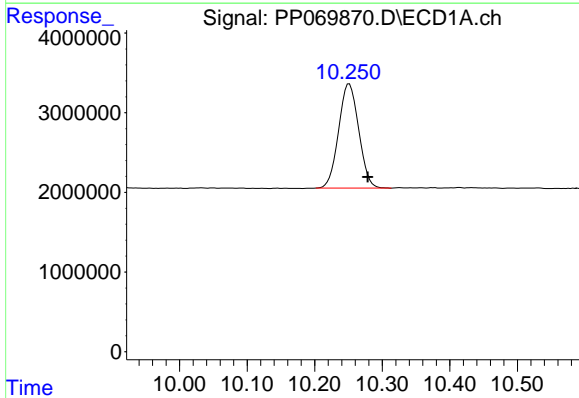
R.T.: 4.526 min  
 Delta R.T.: -0.013 min  
 Response: 40024662  
 Conc: 27.96 ng/ml

Instrument :  
 ECD\_P  
 ClientSampleId :  
 OU4-PCS-TC-14-021725



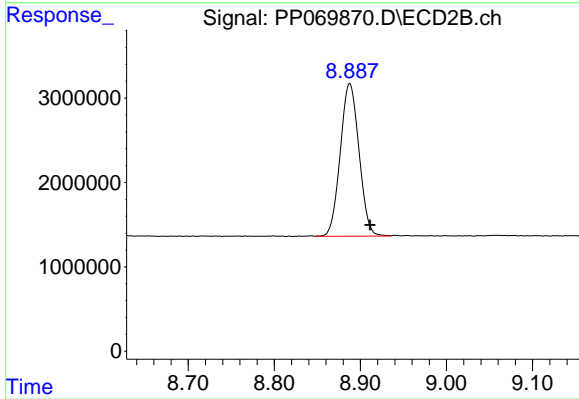
#1 Tetrachloro-m-xylene

R.T.: 3.829 min  
 Delta R.T.: -0.011 min  
 Response: 22908145  
 Conc: 25.67 ng/ml



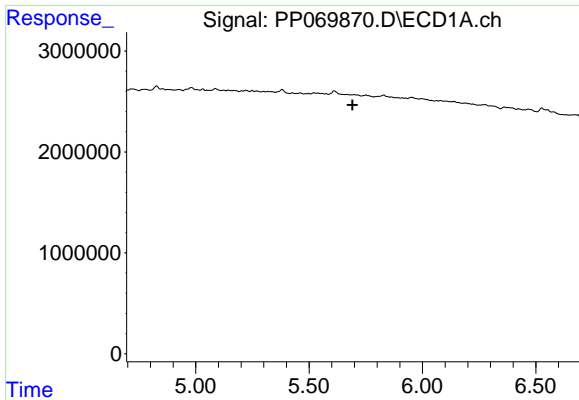
#2 Decachlorobiphenyl

R.T.: 10.251 min  
 Delta R.T.: -0.027 min  
 Response: 27093280  
 Conc: 24.79 ng/ml



#2 Decachlorobiphenyl

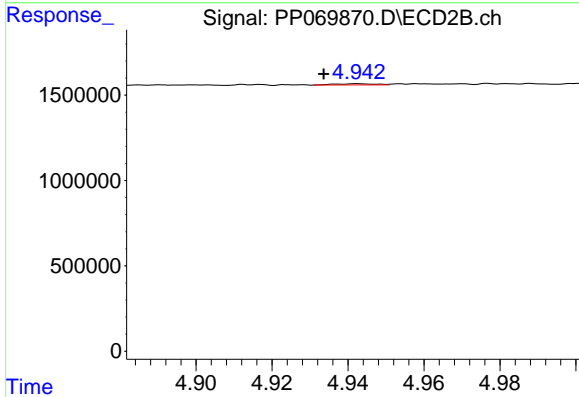
R.T.: 8.888 min  
 Delta R.T.: -0.023 min  
 Response: 27399421  
 Conc: 24.50 ng/ml



#3 AR-1016-1

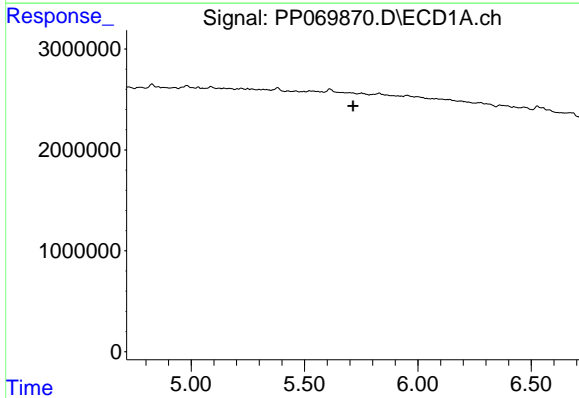
R.T.: 0.000 min  
 Exp R.T.: 5.692 min  
 Response: 0  
 Conc: N.D.

Instrument :  
 ECD\_P  
 ClientSampleId :  
 OU4-PCS-TC-14-021725



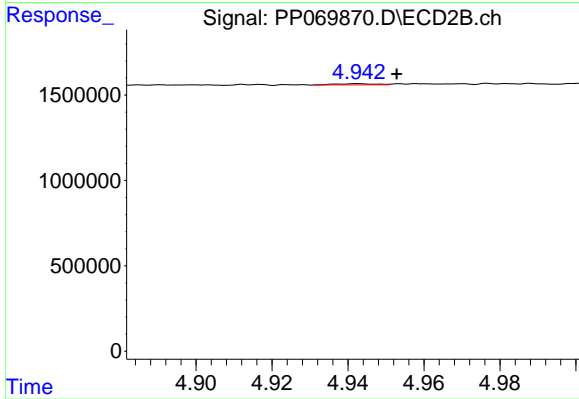
#3 AR-1016-1

R.T.: 4.943 min  
 Delta R.T.: 0.009 min  
 Response: 51918  
 Conc: 1.59 ng/ml



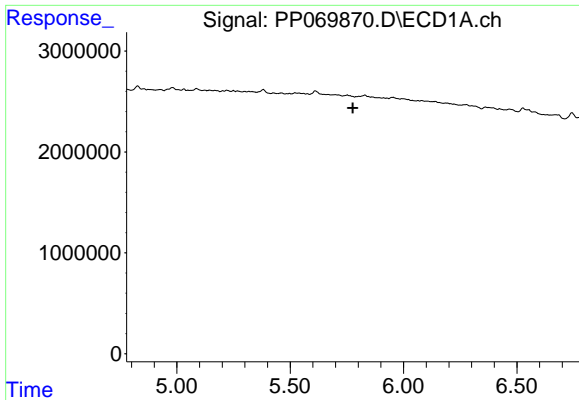
#4 AR-1016-2

R.T.: 0.000 min  
 Exp R.T.: 5.714 min  
 Response: 0  
 Conc: N.D.



#4 AR-1016-2

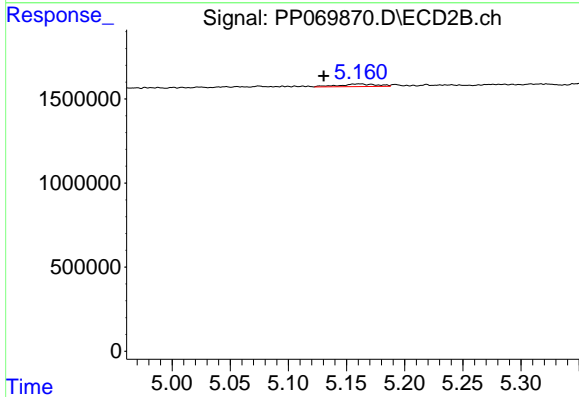
R.T.: 4.943 min  
 Delta R.T.: -0.010 min  
 Response: 51918  
 Conc: 1.15 ng/ml



#5 AR-1016-3

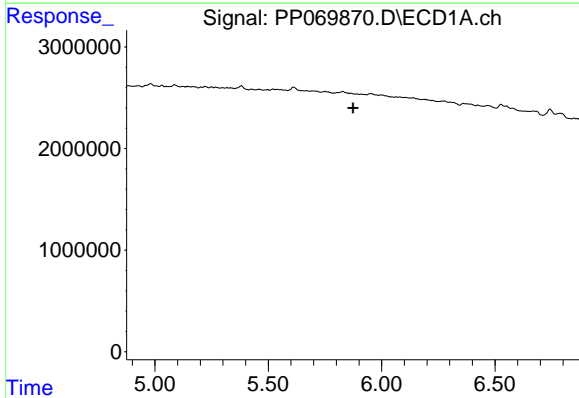
R.T.: 0.000 min  
 Exp R.T.: 5.776 min  
 Response: 0  
 Conc: N.D.

Instrument :  
 ECD\_P  
 ClientSampleId :  
 OU4-PCS-TC-14-021725



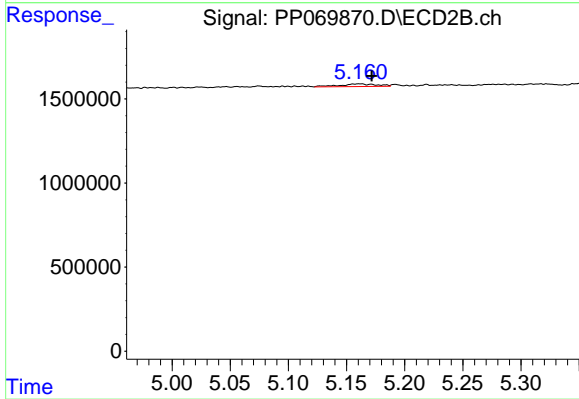
#5 AR-1016-3

R.T.: 5.161 min  
 Delta R.T.: 0.031 min  
 Response: 340458  
 Conc: 13.68 ng/ml



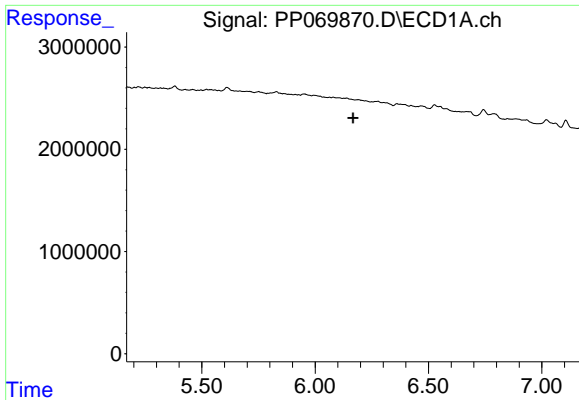
#6 AR-1016-4

R.T.: 0.000 min  
 Exp R.T.: 5.874 min  
 Response: 0  
 Conc: N.D.



#6 AR-1016-4

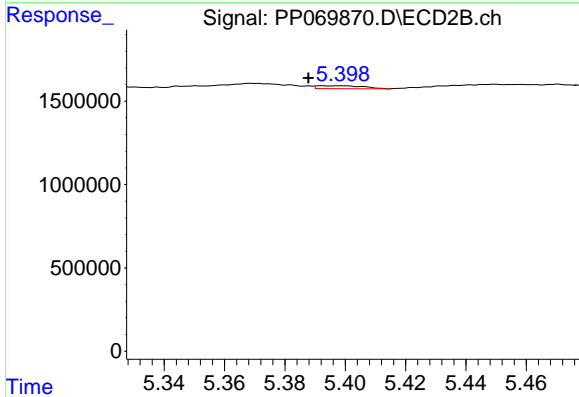
R.T.: 5.161 min  
 Delta R.T.: -0.010 min  
 Response: 340458  
 Conc: 16.86 ng/ml



#7 AR-1016-5

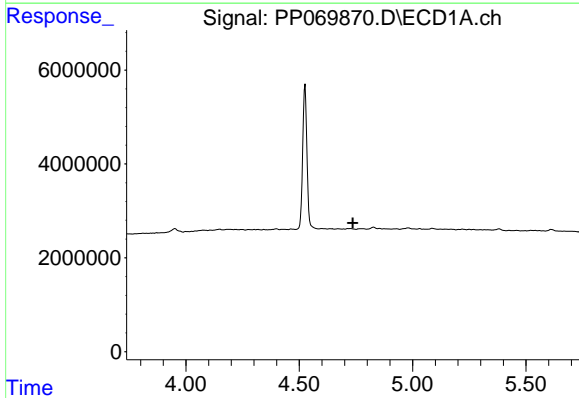
R.T.: 0.000 min  
 Exp R.T.: 6.167 min  
 Response: 0  
 Conc: N.D.

Instrument : ECD\_P  
 ClientSampleId : OU4-PCS-TC-14-021725



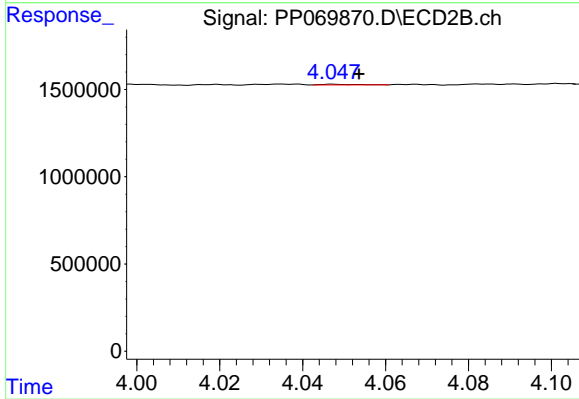
#7 AR-1016-5

R.T.: 5.399 min  
 Delta R.T.: 0.011 min  
 Response: 179524  
 Conc: 6.69 ng/ml



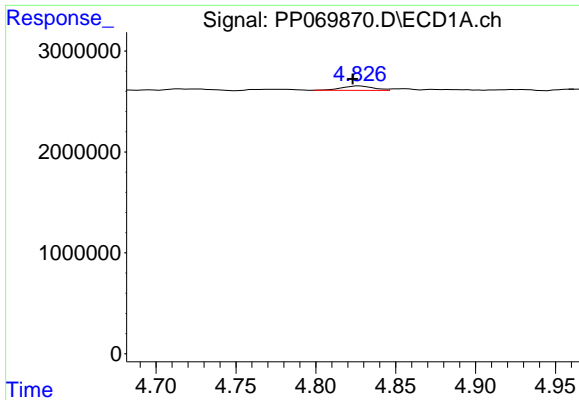
#8 AR-1221-1

R.T.: 0.000 min  
 Exp R.T.: 4.737 min  
 Response: 0  
 Conc: N.D.



#8 AR-1221-1

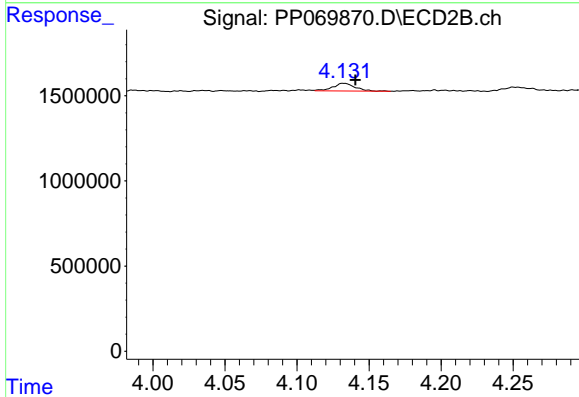
R.T.: 4.048 min  
 Delta R.T.: -0.006 min  
 Response: 21153  
 Conc: 1.72 ng/ml



#9 AR-1221-2

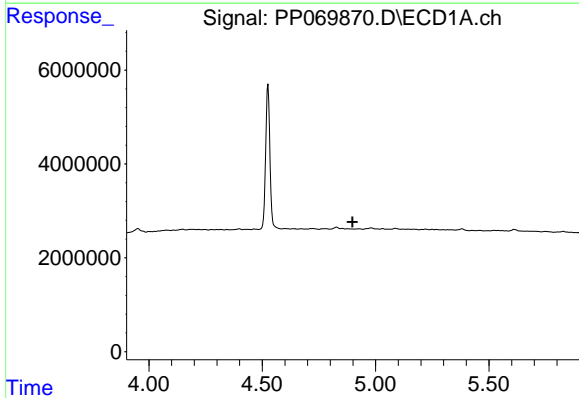
R.T.: 4.827 min  
 Delta R.T.: 0.004 min  
 Response: 618459  
 Conc: 45.17 ng/ml

Instrument :  
 ECD\_P  
 ClientSampleId :  
 OU4-PCS-TC-14-021725



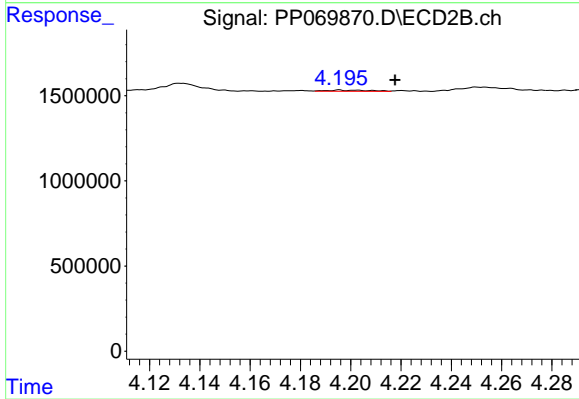
#9 AR-1221-2

R.T.: 4.132 min  
 Delta R.T.: -0.008 min  
 Response: 490569  
 Conc: 50.66 ng/ml



#10 AR-1221-3

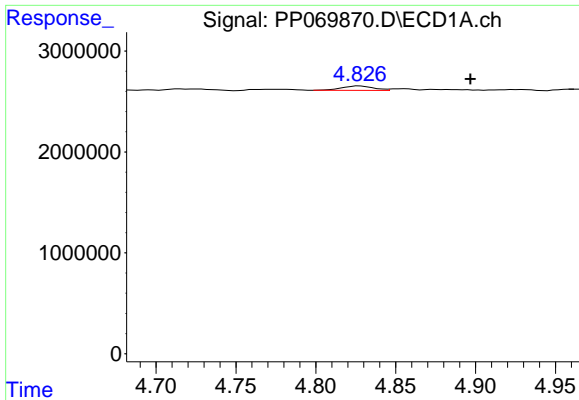
R.T.: 0.000 min  
 Exp R.T. : 4.899 min  
 Response: 0  
 Conc: N.D.



#10 AR-1221-3

R.T.: 4.196 min  
 Delta R.T.: -0.022 min  
 Response: 82068  
 Conc: 2.81 ng/ml

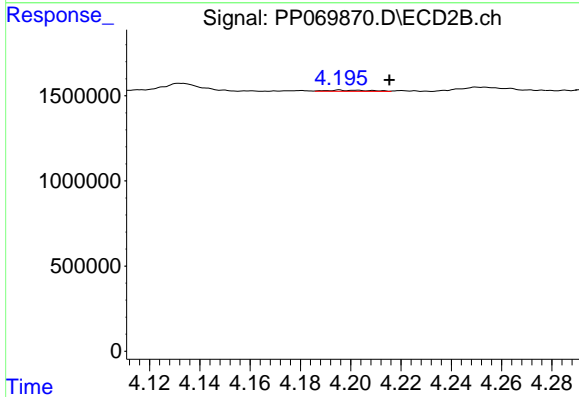




#11 AR-1232-1

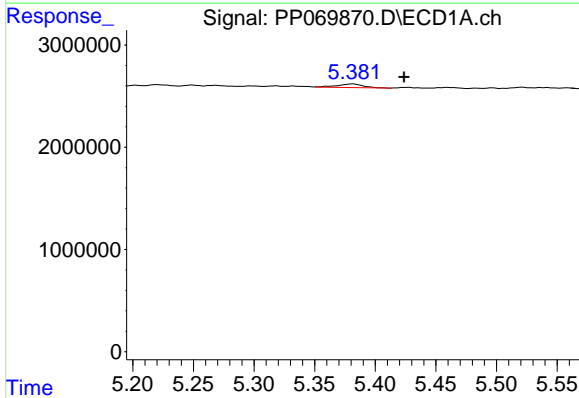
R.T.: 4.827 min  
 Delta R.T.: -0.069 min  
 Response: 618459  
 Conc: 18.58 ng/ml

Instrument :  
 ECD\_P  
 ClientSampleId :  
 OU4-PCS-TC-14-021725



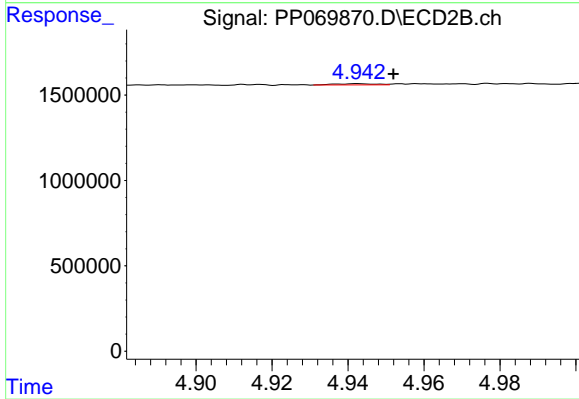
#11 AR-1232-1

R.T.: 4.196 min  
 Delta R.T.: -0.020 min  
 Response: 82068  
 Conc: 3.50 ng/ml



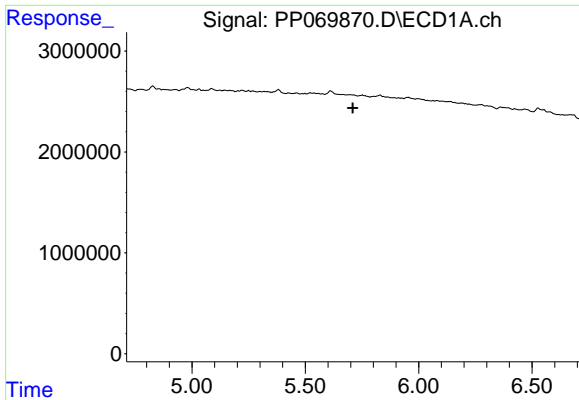
#12 AR-1232-2

R.T.: 5.382 min  
 Delta R.T.: -0.042 min  
 Response: 552230  
 Conc: 33.79 ng/ml



#12 AR-1232-2

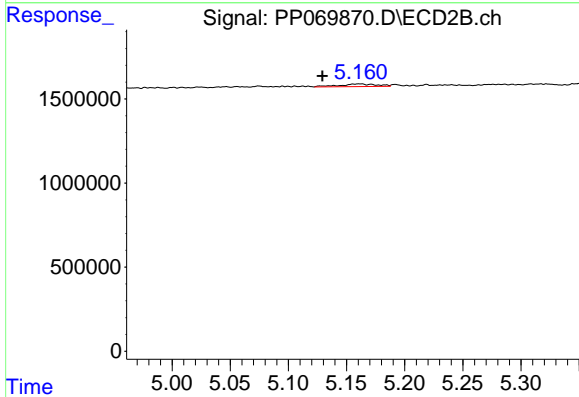
R.T.: 4.943 min  
 Delta R.T.: -0.009 min  
 Response: 51918  
 Conc: 2.20 ng/ml



#13 AR-1232-3

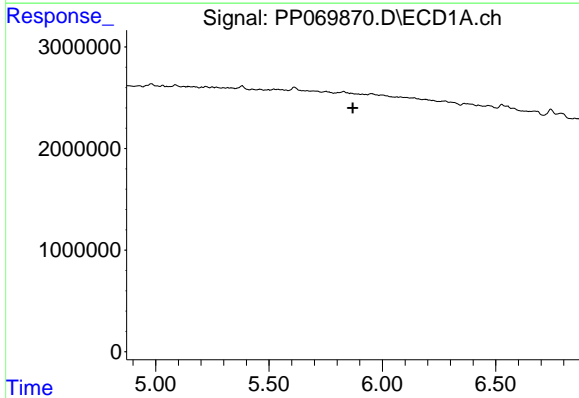
R.T.: 0.000 min  
 Exp R.T.: 5.710 min  
 Response: 0  
 Conc: N.D.

Instrument :  
 ECD\_P  
 ClientSampleId :  
 OU4-PCS-TC-14-021725



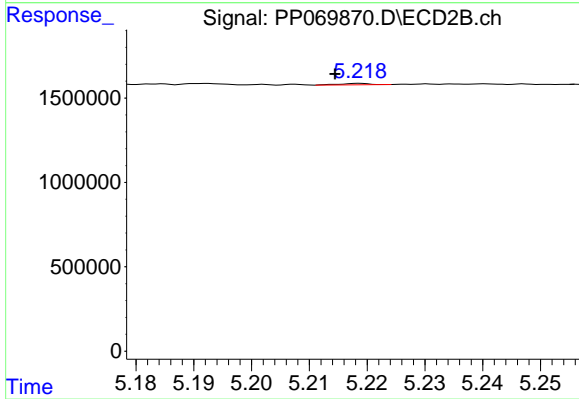
#13 AR-1232-3

R.T.: 5.161 min  
 Delta R.T.: 0.032 min  
 Response: 340458  
 Conc: 26.30 ng/ml



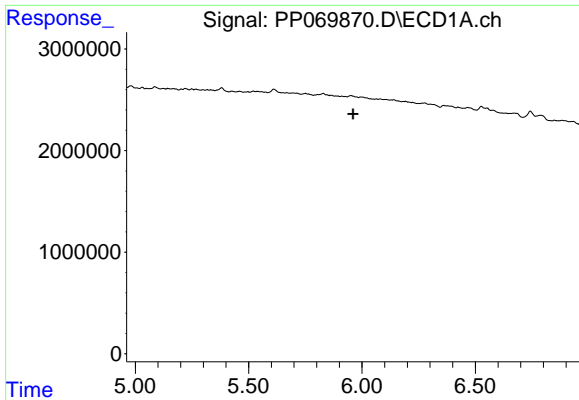
#14 AR-1232-4

R.T.: 0.000 min  
 Exp R.T.: 5.870 min  
 Response: 0  
 Conc: N.D.



#14 AR-1232-4

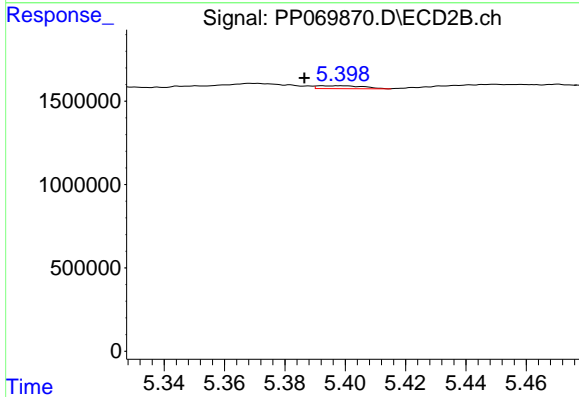
R.T.: 5.219 min  
 Delta R.T.: 0.004 min  
 Response: 26959  
 Conc: 2.43 ng/ml



#15 AR-1232-5

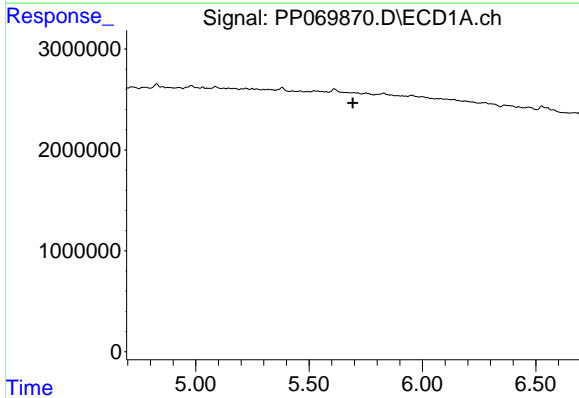
R.T.: 0.000 min  
 Exp R.T.: 5.960 min  
 Response: 0  
 Conc: N.D.

Instrument : ECD\_P  
 ClientSampleId : OU4-PCS-TC-14-021725



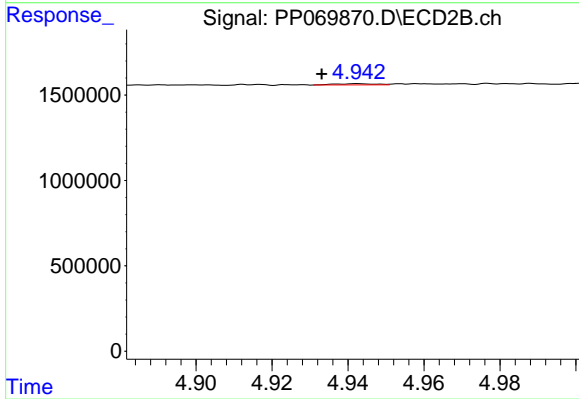
#15 AR-1232-5

R.T.: 5.399 min  
 Delta R.T.: 0.012 min  
 Response: 179524  
 Conc: 14.70 ng/ml



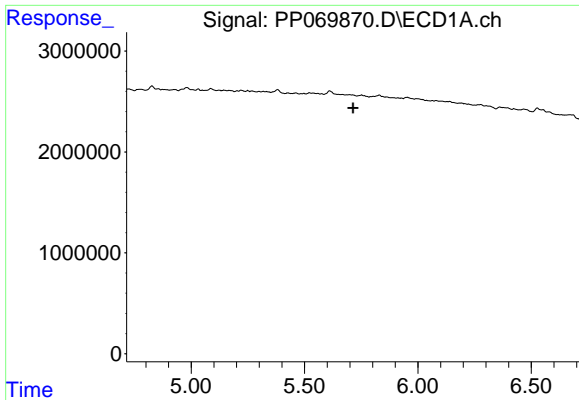
#16 AR-1242-1

R.T.: 0.000 min  
 Exp R.T.: 5.692 min  
 Response: 0  
 Conc: N.D.



#16 AR-1242-1

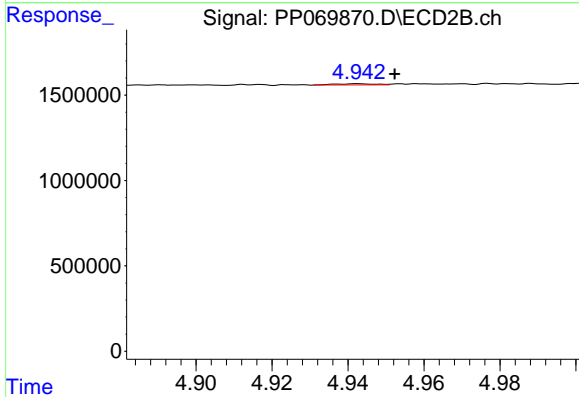
R.T.: 4.943 min  
 Delta R.T.: 0.009 min  
 Response: 51918  
 Conc: 1.80 ng/ml



#17 AR-1242-2

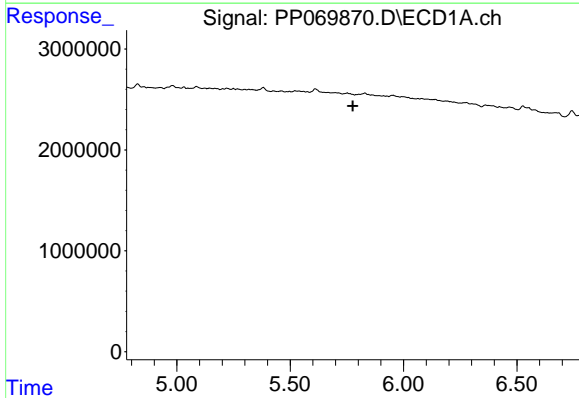
R.T.: 0.000 min  
 Exp R.T. : 5.714 min  
 Response: 0  
 Conc: N.D.

Instrument :  
 ECD\_P  
 ClientSampleId :  
 OU4-PCS-TC-14-021725



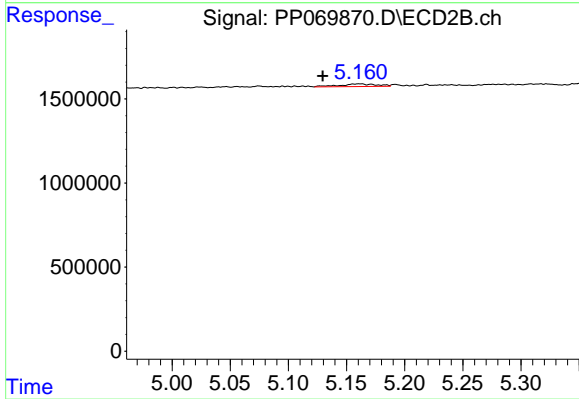
#17 AR-1242-2

R.T.: 4.943 min  
 Delta R.T.: -0.010 min  
 Response: 51918  
 Conc: 1.32 ng/ml



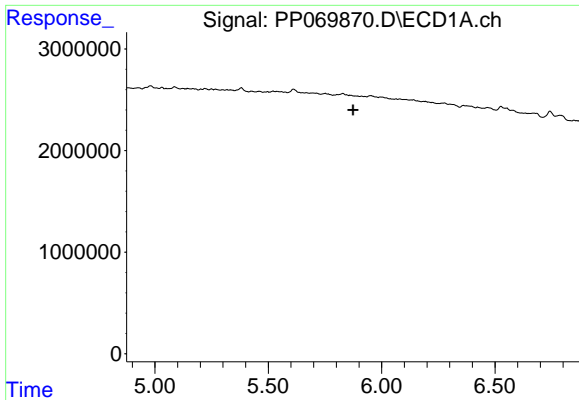
#18 AR-1242-3

R.T.: 0.000 min  
 Exp R.T. : 5.776 min  
 Response: 0  
 Conc: N.D.



#18 AR-1242-3

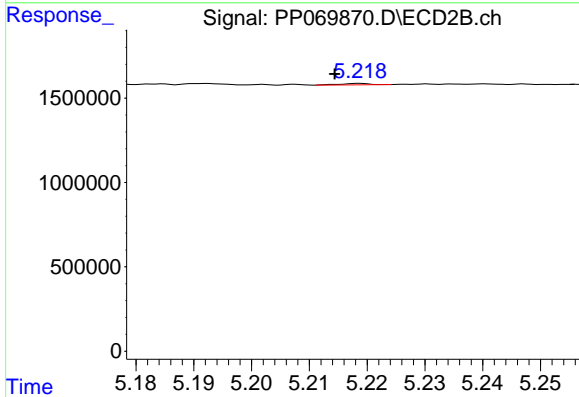
R.T.: 5.161 min  
 Delta R.T.: 0.032 min  
 Response: 340458  
 Conc: 15.13 ng/ml



#19 AR-1242-4

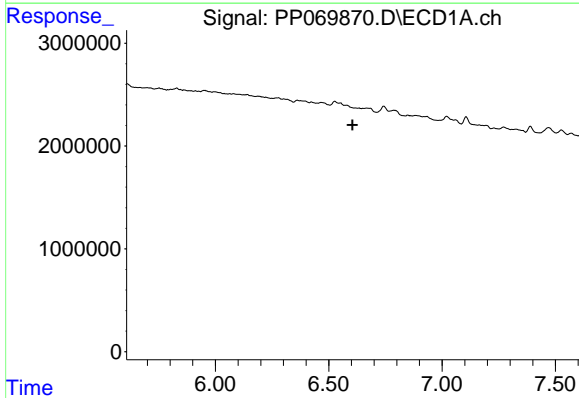
R.T.: 0.000 min  
 Exp R.T.: 5.874 min  
 Response: 0  
 Conc: N.D.

Instrument : ECD\_P  
 ClientSampleId : OU4-PCS-TC-14-021725



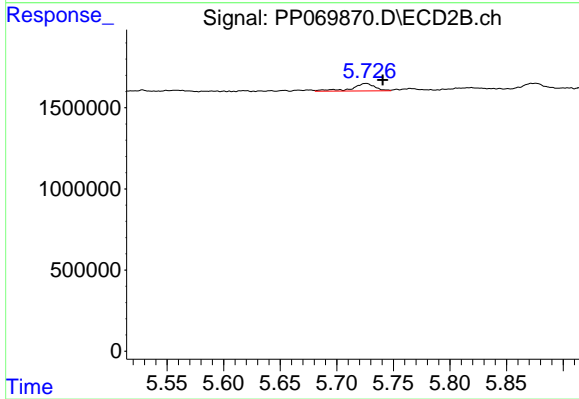
#19 AR-1242-4

R.T.: 5.219 min  
 Delta R.T.: 0.004 min  
 Response: 26959  
 Conc: 1.25 ng/ml



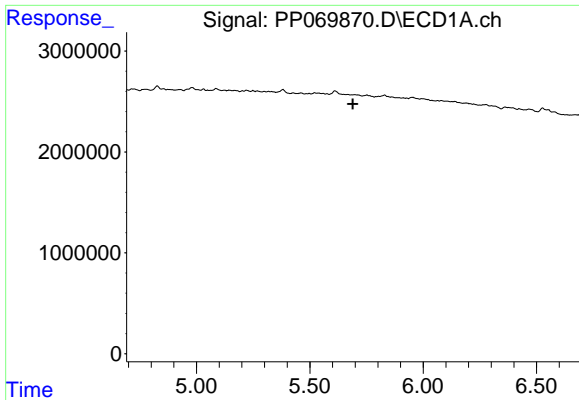
#20 AR-1242-5

R.T.: 0.000 min  
 Exp R.T.: 6.605 min  
 Response: 0  
 Conc: N.D.



#20 AR-1242-5

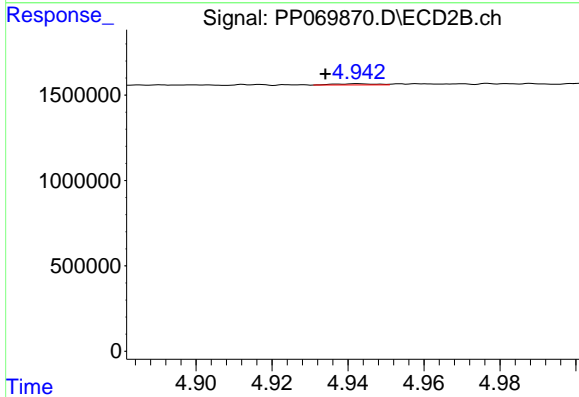
R.T.: 5.726 min  
 Delta R.T.: -0.015 min  
 Response: 643390  
 Conc: 22.36 ng/ml



#21 AR-1248-1

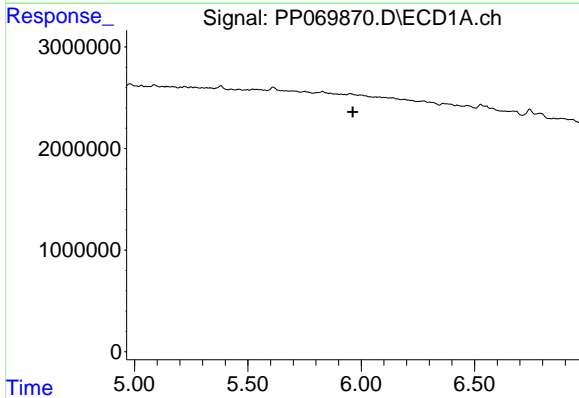
R.T.: 0.000 min  
 Exp R.T.: 5.690 min  
 Response: 0  
 Conc: N.D.

Instrument :  
 ECD\_P  
 ClientSampleId :  
 OU4-PCS-TC-14-021725



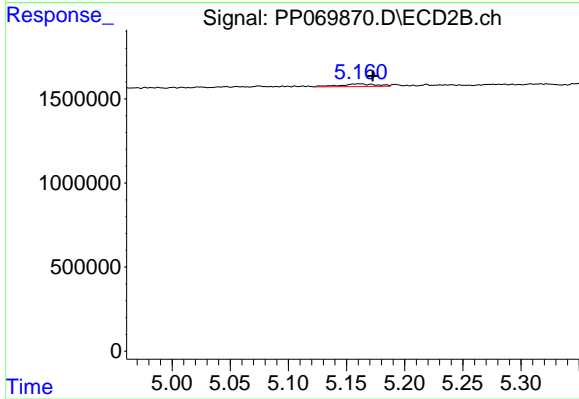
#21 AR-1248-1

R.T.: 4.943 min  
 Delta R.T.: 0.008 min  
 Response: 51918  
 Conc: 2.36 ng/ml



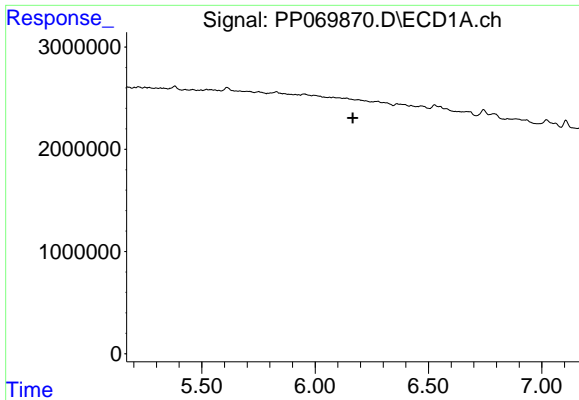
#22 AR-1248-2

R.T.: 0.000 min  
 Exp R.T.: 5.963 min  
 Response: 0  
 Conc: N.D.



#22 AR-1248-2

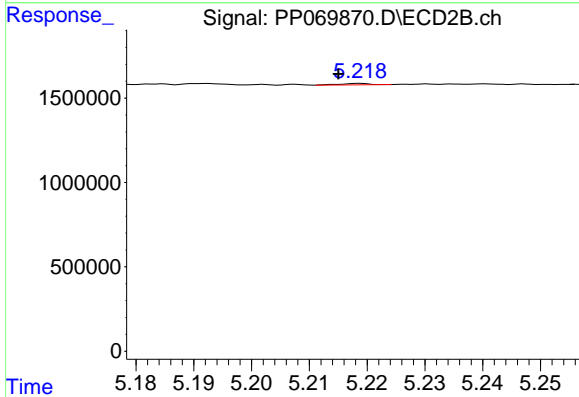
R.T.: 5.161 min  
 Delta R.T.: -0.011 min  
 Response: 340458  
 Conc: 11.32 ng/ml



#23 AR-1248-3

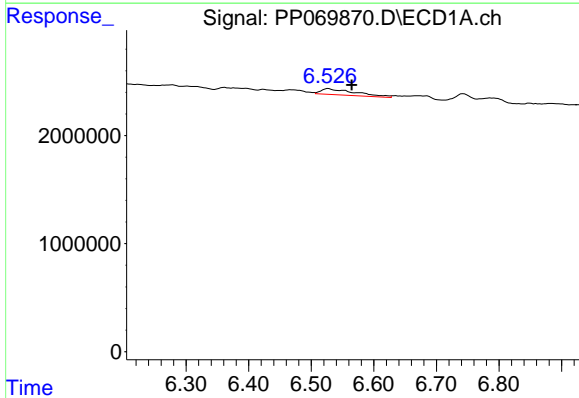
R.T.: 0.000 min  
 Exp R.T.: 6.166 min  
 Response: 0  
 Conc: N.D.

Instrument : ECD\_P  
 ClientSampleId : OU4-PCS-TC-14-021725



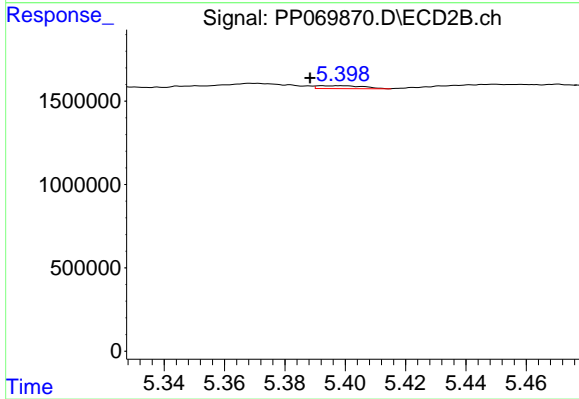
#23 AR-1248-3

R.T.: 5.219 min  
 Delta R.T.: 0.004 min  
 Response: 26959  
 Conc: 0.87 ng/ml



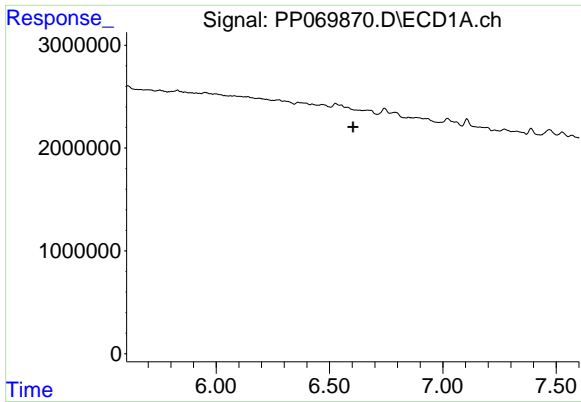
#24 AR-1248-4

R.T.: 6.527 min  
 Delta R.T.: -0.037 min  
 Response: 2153165  
 Conc: 39.06 ng/ml



#24 AR-1248-4

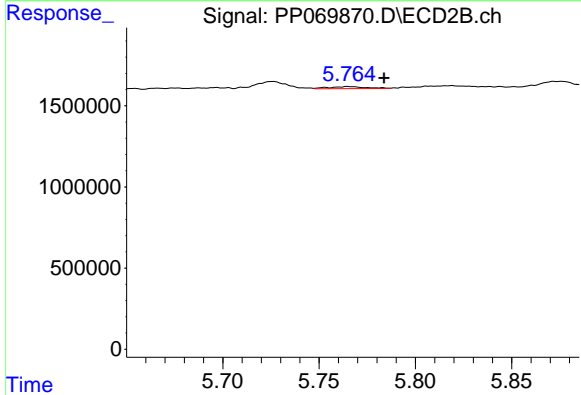
R.T.: 5.399 min  
 Delta R.T.: 0.010 min  
 Response: 179524  
 Conc: 4.86 ng/ml



#25 AR-1248-5

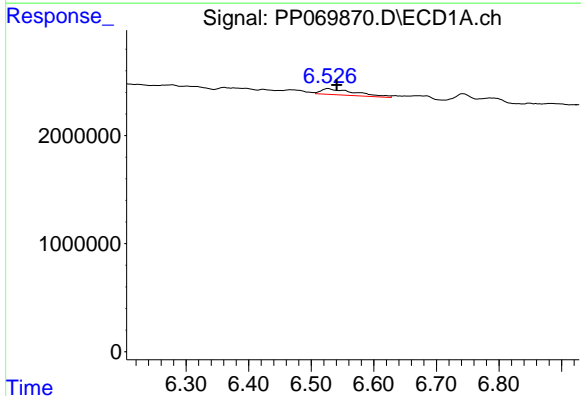
R.T.: 0.000 min  
 Exp R.T.: 6.604 min  
 Response: 0  
 Conc: N.D.

Instrument :  
 ECD\_P  
 ClientSampleId :  
 OU4-PCS-TC-14-021725



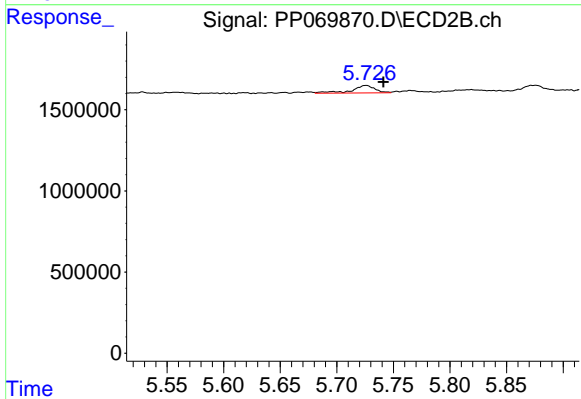
#25 AR-1248-5

R.T.: 5.765 min  
 Delta R.T.: -0.018 min  
 Response: 171732  
 Conc: 4.59 ng/ml



#26 AR-1254-1

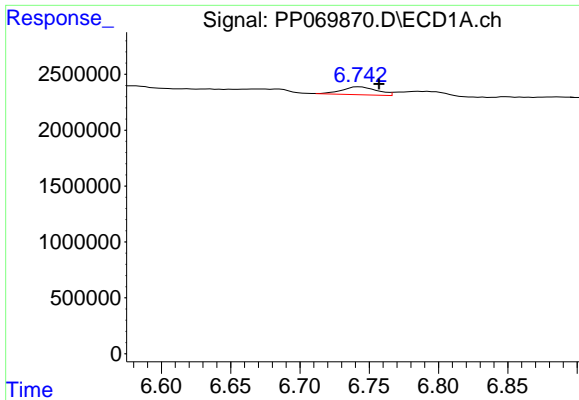
R.T.: 6.527 min  
 Delta R.T.: -0.013 min  
 Response: 2153165  
 Conc: 37.21 ng/ml



#26 AR-1254-1

R.T.: 5.726 min  
 Delta R.T.: -0.016 min  
 Response: 643390  
 Conc: 11.69 ng/ml

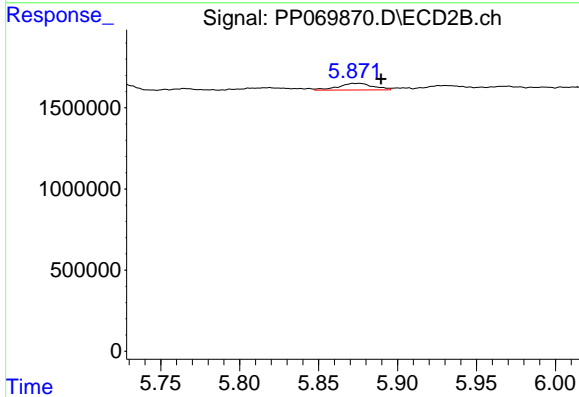




#27 AR-1254-2

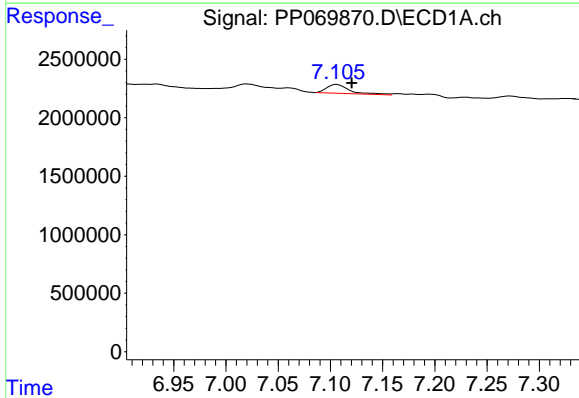
R.T.: 6.743 min  
 Delta R.T.: -0.014 min  
 Response: 1240828  
 Conc: 15.46 ng/ml

Instrument :  
 ECD\_P  
 ClientSampleId :  
 OU4-PCS-TC-14-021725



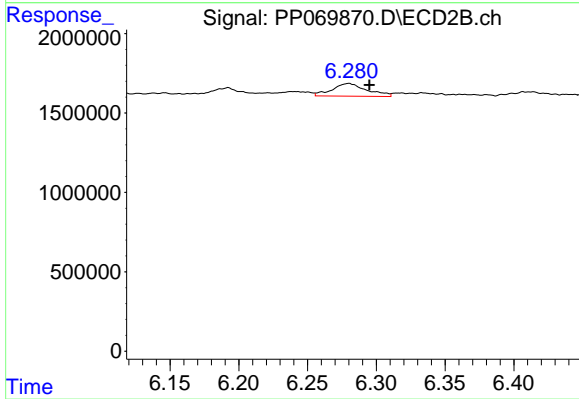
#27 AR-1254-2

R.T.: 5.875 min  
 Delta R.T.: -0.014 min  
 Response: 620370  
 Conc: 12.83 ng/ml



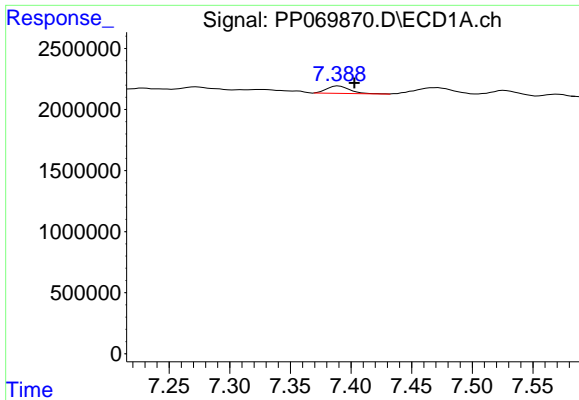
#28 AR-1254-3

R.T.: 7.106 min  
 Delta R.T.: -0.014 min  
 Response: 1141912  
 Conc: 13.55 ng/ml



#28 AR-1254-3

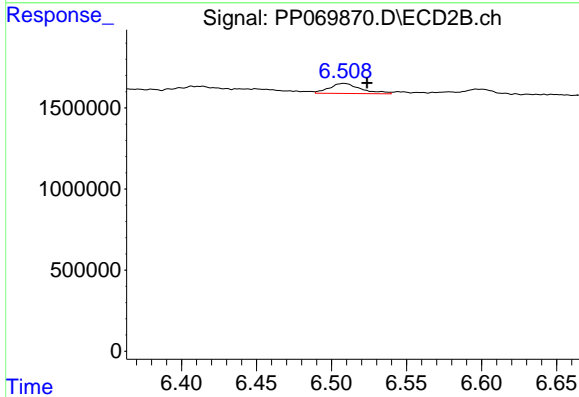
R.T.: 6.280 min  
 Delta R.T.: -0.015 min  
 Response: 1418877  
 Conc: 18.69 ng/ml



#29 AR-1254-4

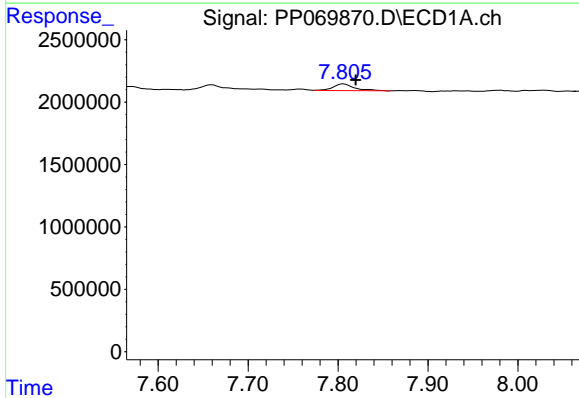
R.T.: 7.390 min  
 Delta R.T.: -0.013 min  
 Response: 802739  
 Conc: 11.77 ng/ml

Instrument :  
 ECD\_P  
 ClientSampleId :  
 OU4-PCS-TC-14-021725



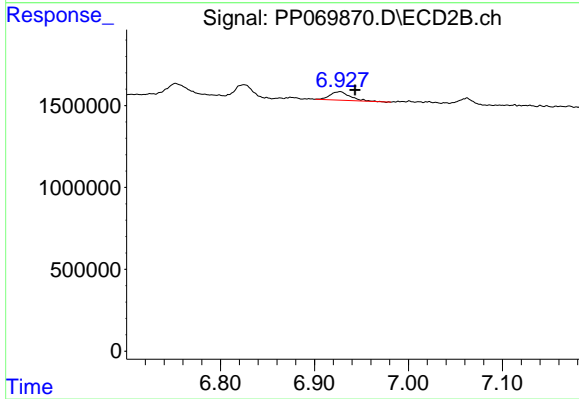
#29 AR-1254-4

R.T.: 6.508 min  
 Delta R.T.: -0.015 min  
 Response: 905710  
 Conc: 17.67 ng/ml



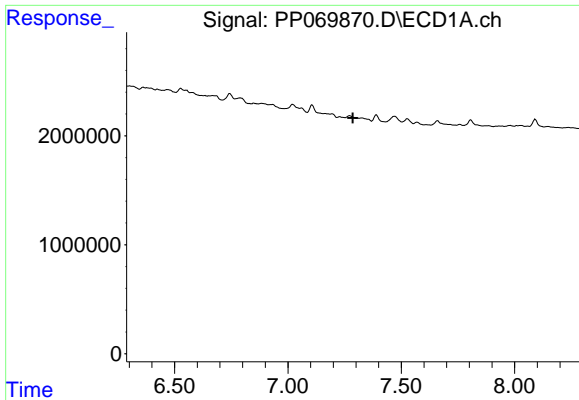
#30 AR-1254-5

R.T.: 7.806 min  
 Delta R.T.: -0.013 min  
 Response: 899726  
 Conc: 13.22 ng/ml



#30 AR-1254-5

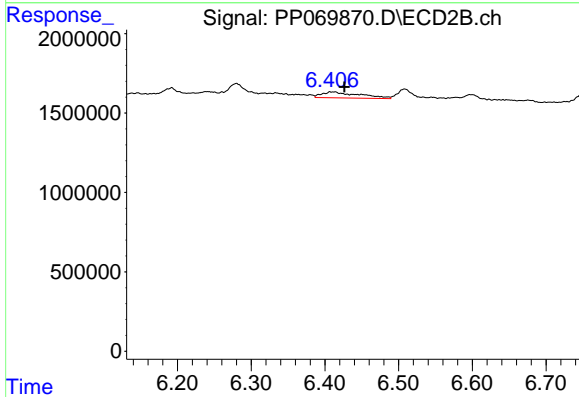
R.T.: 6.927 min  
 Delta R.T.: -0.016 min  
 Response: 773572  
 Conc: 11.62 ng/ml



#31 AR-1260-1

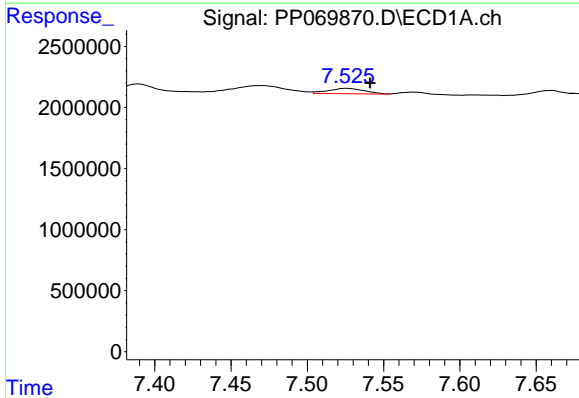
R.T.: 0.000 min  
 Exp R.T.: 7.287 min  
 Response: 0  
 Conc: N.D.

Instrument :  
 ECD\_P  
 ClientSampleId :  
 OU4-PCS-TC-14-021725



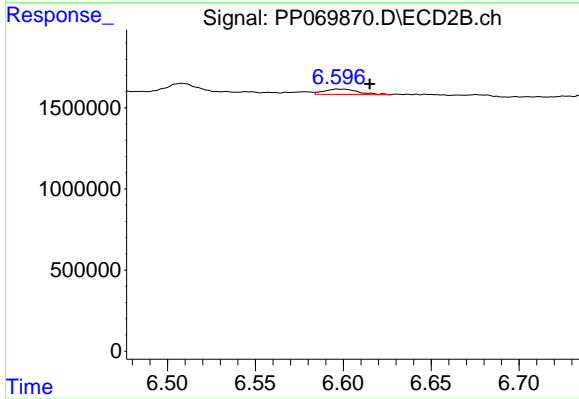
#31 AR-1260-1

R.T.: 6.407 min  
 Delta R.T.: -0.019 min  
 Response: 1331537  
 Conc: 27.61 ng/ml



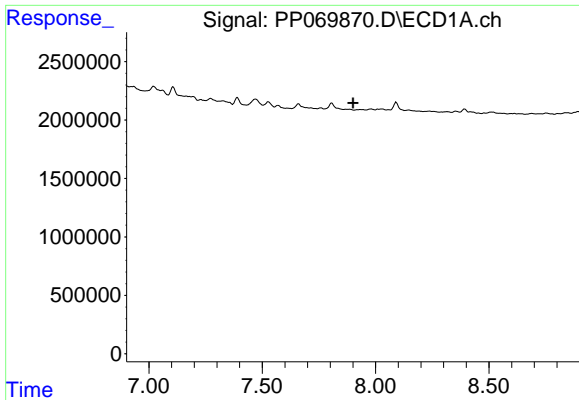
#32 AR-1260-2

R.T.: 7.526 min  
 Delta R.T.: -0.015 min  
 Response: 730627  
 Conc: 9.39 ng/ml



#32 AR-1260-2

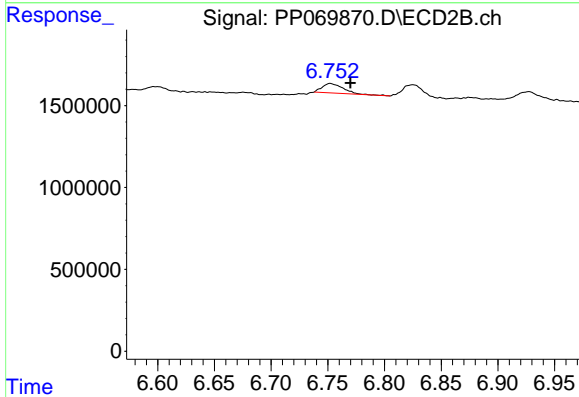
R.T.: 6.597 min  
 Delta R.T.: -0.018 min  
 Response: 454968  
 Conc: 7.42 ng/ml



#33 AR-1260-3

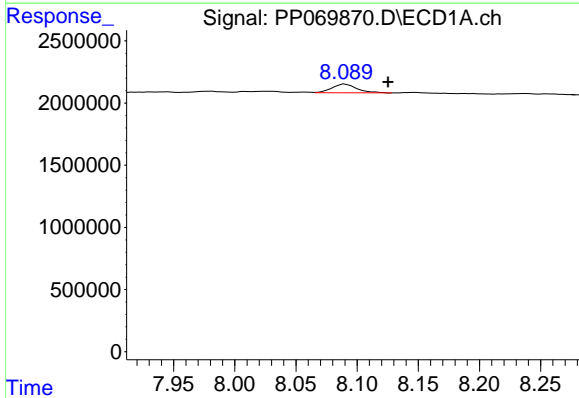
R.T.: 0.000 min  
 Exp R.T.: 7.900 min  
 Response: 0  
 Conc: N.D.

Instrument : ECD\_P  
 ClientSampleId : OU4-PCS-TC-14-021725



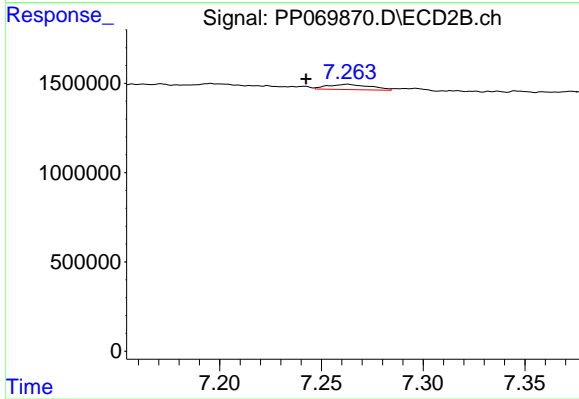
#33 AR-1260-3

R.T.: 6.752 min  
 Delta R.T.: -0.018 min  
 Response: 747168  
 Conc: 12.42 ng/ml



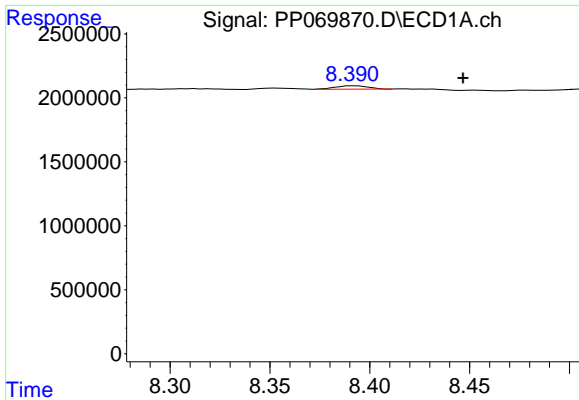
#34 AR-1260-4

R.T.: 8.090 min  
 Delta R.T.: -0.035 min  
 Response: 988817  
 Conc: 14.99 ng/ml



#34 AR-1260-4

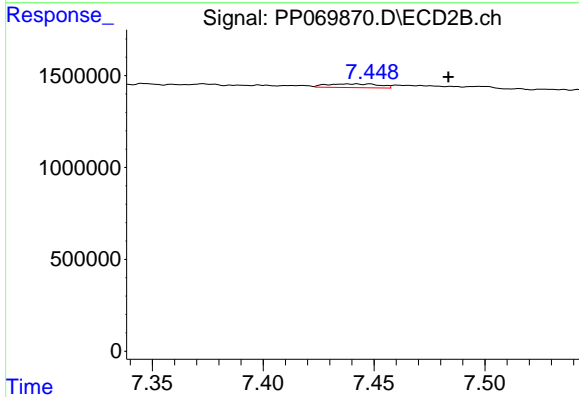
R.T.: 7.263 min  
 Delta R.T.: 0.020 min  
 Response: 427527  
 Conc: 9.20 ng/ml



#35 AR-1260-5

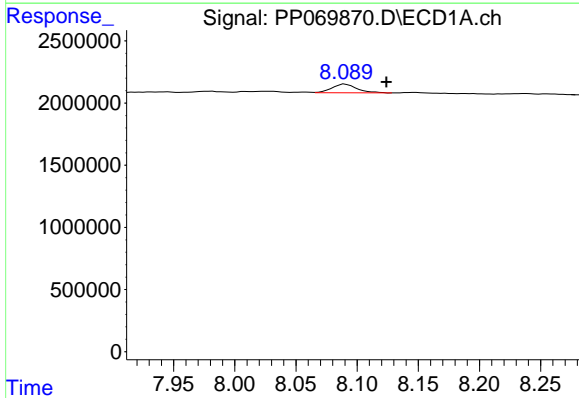
R.T.: 8.393 min  
 Delta R.T.: -0.054 min  
 Response: 301737  
 Conc: 2.30 ng/ml

Instrument :  
 ECD\_P  
 ClientSampleId :  
 OU4-PCS-TC-14-021725



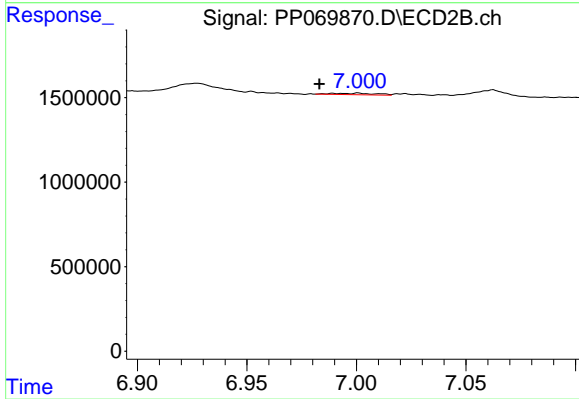
#35 AR-1260-5

R.T.: 7.448 min  
 Delta R.T.: -0.036 min  
 Response: 324392  
 Conc: 2.92 ng/ml



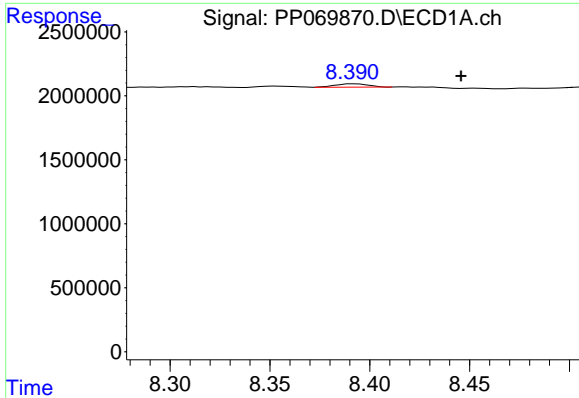
#36 AR-1262-1

R.T.: 8.090 min  
 Delta R.T.: -0.034 min  
 Response: 988817  
 Conc: 12.51 ng/ml



#36 AR-1262-1

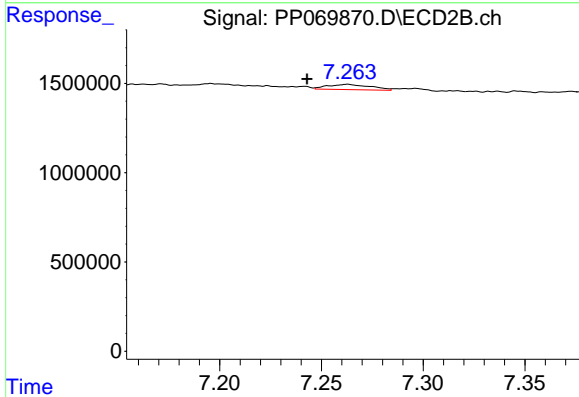
R.T.: 7.001 min  
 Delta R.T.: 0.018 min  
 Response: 121521  
 Conc: 1.71 ng/ml



#37 AR-1262-2

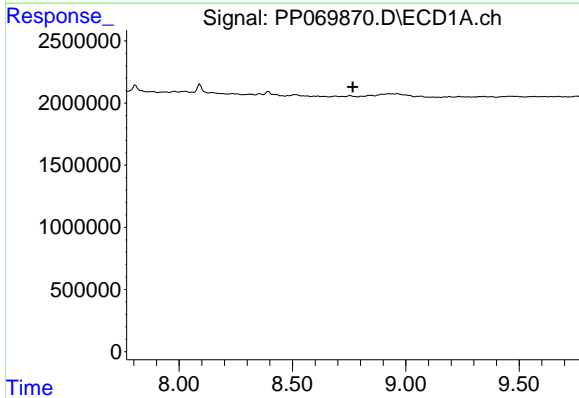
R.T.: 8.393 min  
 Delta R.T.: -0.053 min  
 Response: 301737  
 Conc: 1.97 ng/ml

Instrument :  
 ECD\_P  
 ClientSampleId :  
 OU4-PCS-TC-14-021725



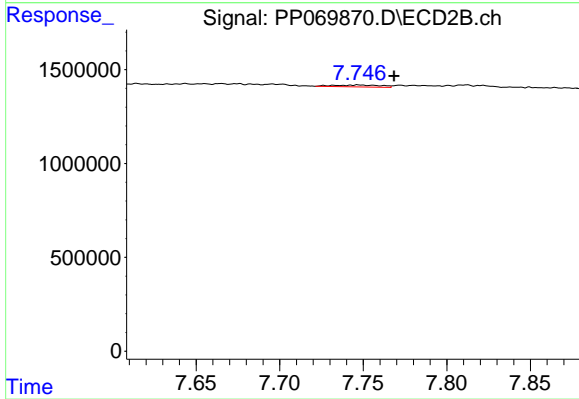
#37 AR-1262-2

R.T.: 7.263 min  
 Delta R.T.: 0.020 min  
 Response: 427527  
 Conc: 7.01 ng/ml



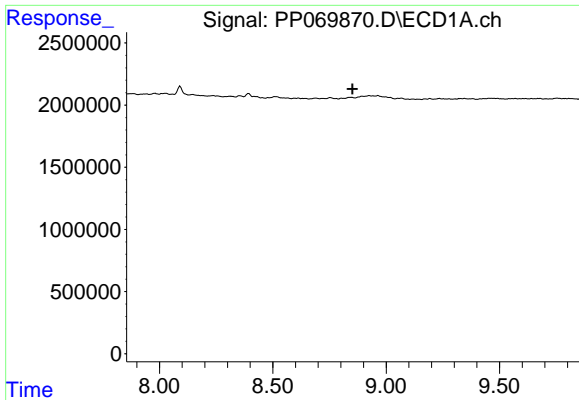
#38 AR-1262-3

R.T.: 0.000 min  
 Exp R.T. : 8.766 min  
 Response: 0  
 Conc: N.D.



#38 AR-1262-3

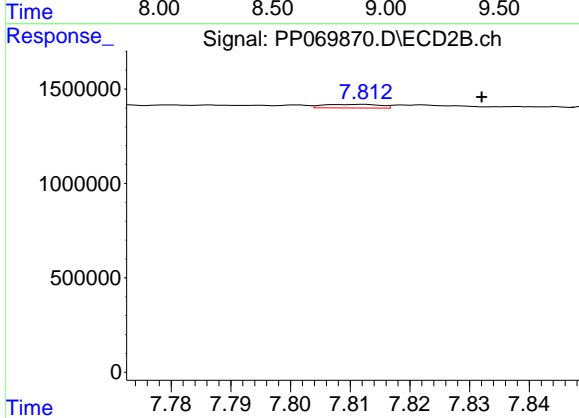
R.T.: 7.747 min  
 Delta R.T.: -0.021 min  
 Response: 197703  
 Conc: 3.78 ng/ml



#39 AR-1262-4

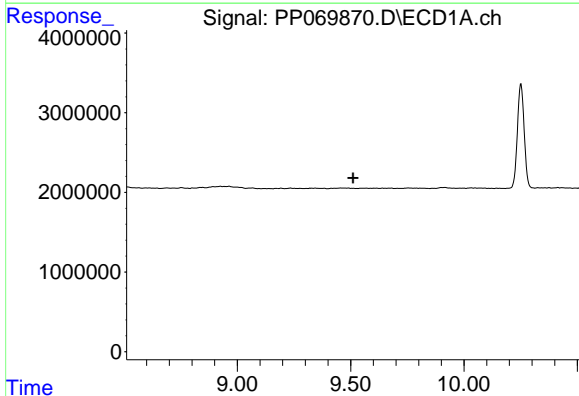
R.T.: 0.000 min  
 Exp R.T.: 8.852 min  
 Response: 0  
 Conc: N.D.

Instrument : ECD\_P  
 ClientSampleId : OU4-PCS-TC-14-021725



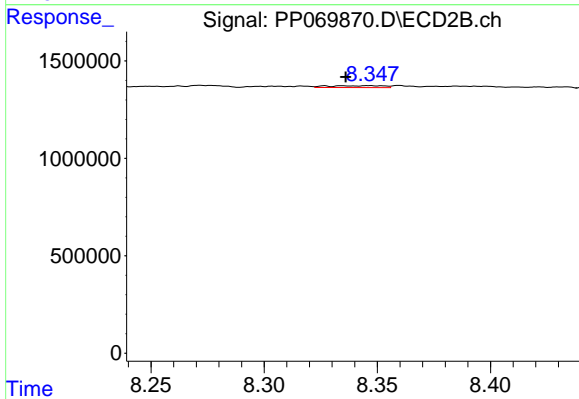
#39 AR-1262-4

R.T.: 7.812 min  
 Delta R.T.: -0.020 min  
 Response: 123673  
 Conc: 1.34 ng/ml



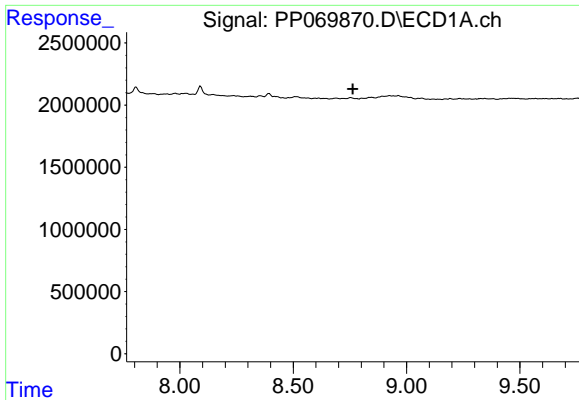
#40 AR-1262-5

R.T.: 0.000 min  
 Exp R.T.: 9.511 min  
 Response: 0  
 Conc: N.D.



#40 AR-1262-5

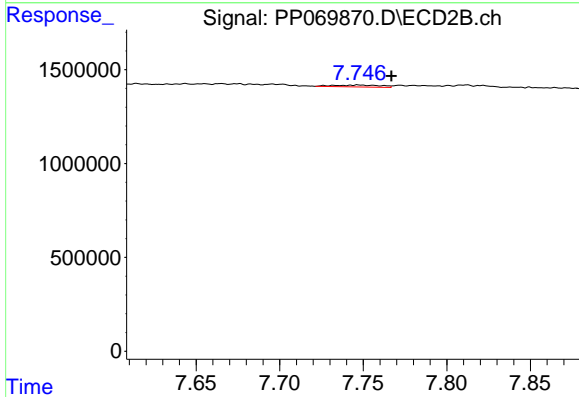
R.T.: 8.346 min  
 Delta R.T.: 0.010 min  
 Response: 160708  
 Conc: 3.36 ng/ml



#41 AR-1268-1

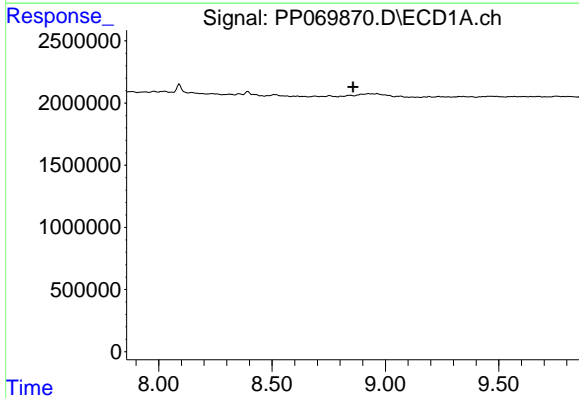
R.T.: 0.000 min  
 Exp R.T. : 8.763 min  
 Response: 0  
 Conc: N.D.

Instrument :  
 ECD\_P  
 ClientSampleId :  
 OU4-PCS-TC-14-021725



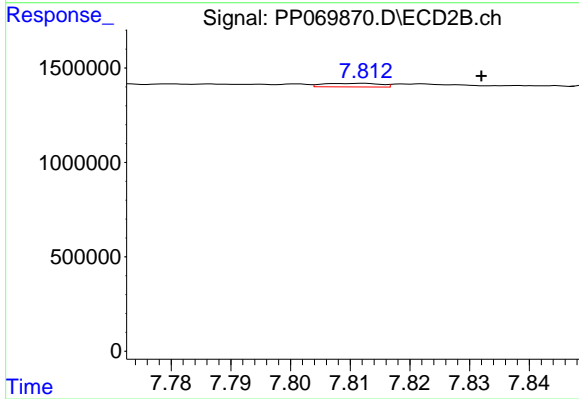
#41 AR-1268-1

R.T.: 7.747 min  
 Delta R.T.: -0.020 min  
 Response: 197703  
 Conc: 1.36 ng/ml



#42 AR-1268-2

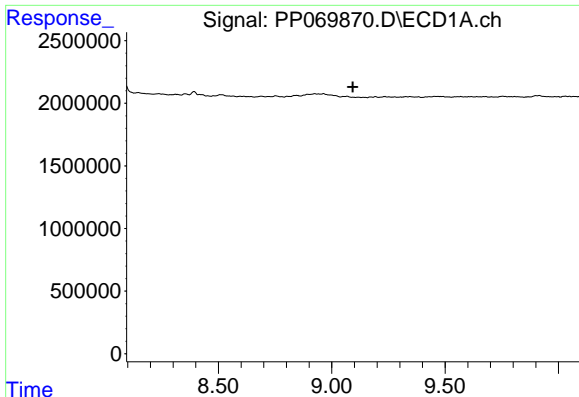
R.T.: 0.000 min  
 Exp R.T. : 8.857 min  
 Response: 0  
 Conc: N.D.



#42 AR-1268-2

R.T.: 7.812 min  
 Delta R.T.: -0.020 min  
 Response: 123673  
 Conc: 0.93 ng/ml

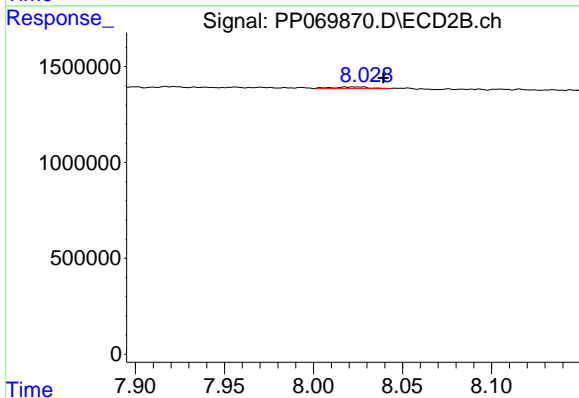




#43 AR-1268-3

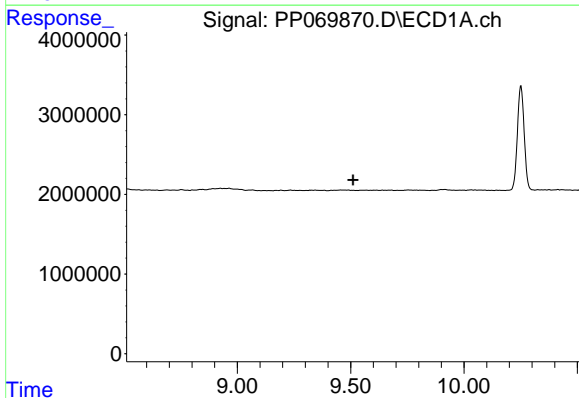
R.T.: 0.000 min  
 Exp R.T. : 9.093 min  
 Response: 0  
 Conc: N.D.

Instrument :  
 ECD\_P  
 ClientSampleId :  
 OU4-PCS-TC-14-021725



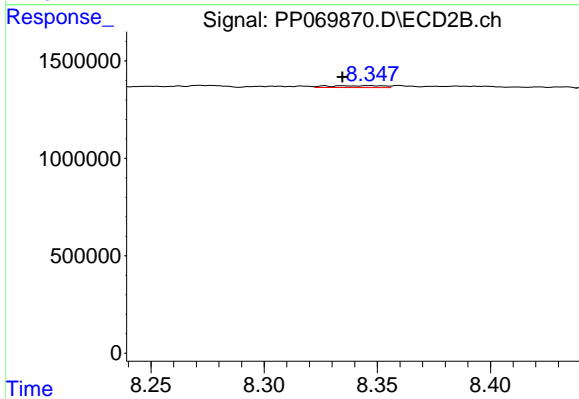
#43 AR-1268-3

R.T.: 8.023 min  
 Delta R.T.: -0.017 min  
 Response: 125136  
 Conc: 1.10 ng/ml



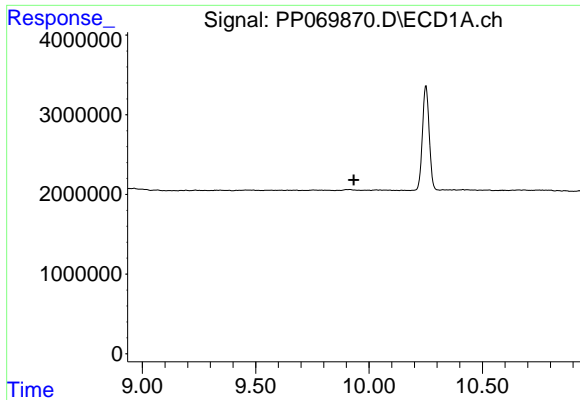
#44 AR-1268-4

R.T.: 0.000 min  
 Exp R.T. : 9.511 min  
 Response: 0  
 Conc: N.D.



#44 AR-1268-4

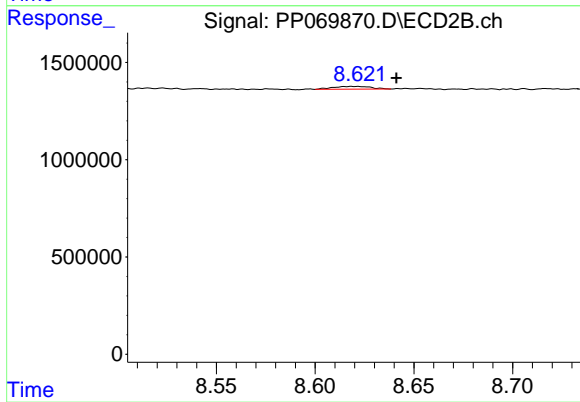
R.T.: 8.346 min  
 Delta R.T.: 0.012 min  
 Response: 160708  
 Conc: 3.09 ng/ml



#45 AR-1268-5

R.T.: 0.000 min  
 Exp R.T.: 9.933 min  
 Response: 0  
 Conc: N.D.

Instrument :  
 ECD\_P  
 ClientSampleId :  
 OU4-PCS-TC-14-021725



#45 AR-1268-5

R.T.: 8.620 min  
 Delta R.T.: -0.021 min  
 Response: 188065  
 Conc: 0.53 ng/ml