

Data Path : Z:\pestpcbsrv\HPCHEM1\ECD_P\Data\PP021925\
 Data File : PP069876.D
 Signal(s) : Signal #1: ECD1A.ch Signal #2: ECD2B.ch
 Acq On : 20 Feb 2025 02:47
 Operator : YP\AJ
 Sample : I.BLK
 Misc :
 ALS Vial : 2 Sample Multiplier: 1

Instrument :
 ECD_P
ClientSampleId :
 I.BLK

Manual Integrations
APPROVED
 Reviewed By :Yogesh Patel 02/20/2025
 Supervised By :Ankita Jodhani 02/20/2025

Integration File signal 1: autoint1.e
 Integration File signal 2: autoint2.e
 Quant Time: Feb 20 05:21:33 2025
 Quant Method : Z:\pestpcbsrv\HPCHEM1\ECD_P\methods\PP012825.M
 Quant Title : GC EXTRACTABLES
 QLast Update : Wed Jan 29 00:13:21 2025
 Response via : Initial Calibration
 Integrator: ChemStation

Volume Inj. : 2 µl
 Signal #1 Phase : ZB-MR1 Signal #2 Phase: ZB-MR2
 Signal #1 Info : 30Mx0.32mmx 0.50µ Signal #2 Info : 30M x 0.32mm x 0.25µm

Compound	RT#1	RT#2	Resp#1	Resp#2	ng/ml	ng/ml

System Monitoring Compounds						
1) SA Tetrachlo...	4.528	3.830	33330073	20529542	23.284	23.001m
2) SA Decachlor...	10.256	8.890	24757589	25259689	22.653	22.584

Target Compounds

 (f)=RT Delta > 1/2 Window (#)=Amounts differ by > 25% (m)=manual int.

Data Path : Z:\pestpcbsrv\HPCHEM1\ECD_P\Data\PP021925\
 Data File : PP069876.D
 Signal(s) : Signal #1: ECD1A.ch Signal #2: ECD2B.ch
 Acq On : 20 Feb 2025 02:47
 Operator : YP\AJ
 Sample : I.BLK
 Misc :
 ALS Vial : 2 Sample Multiplier: 1

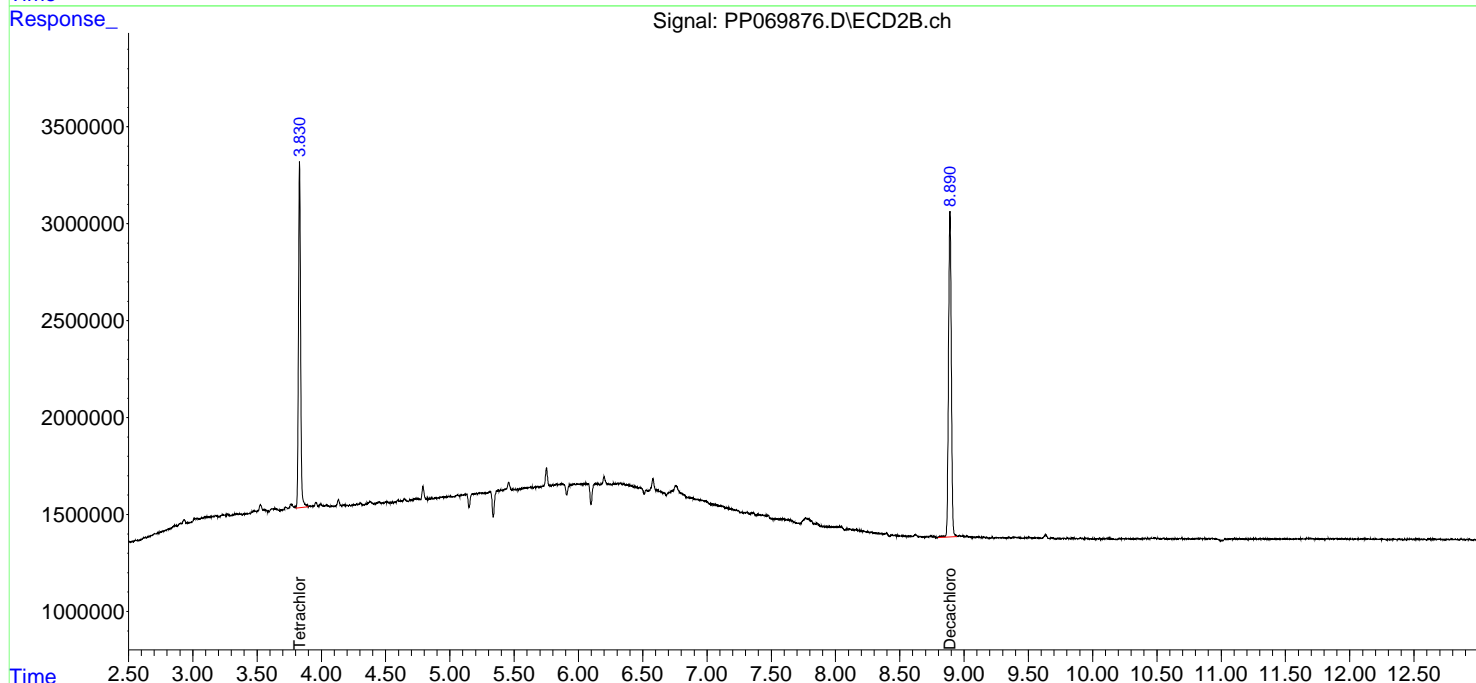
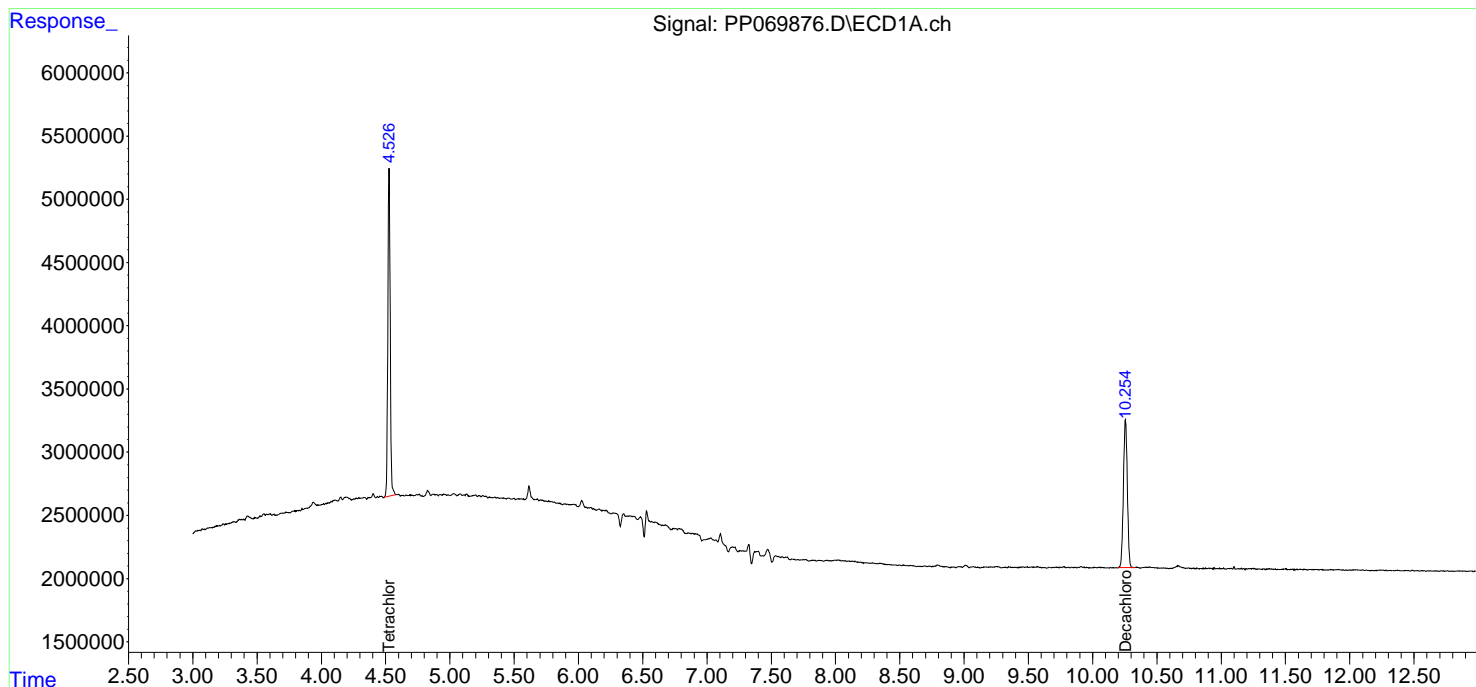
Instrument :
 ECD_P
ClientSampleId :
 I.BLK

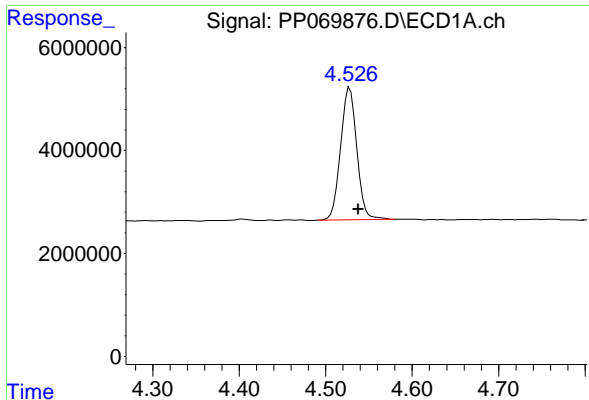
Manual Integrations
APPROVED

Reviewed By :Yogesh Patel 02/20/2025
 Supervised By :Ankita Jodhani 02/20/2025

Integration File signal 1: autoint1.e
 Integration File signal 2: autoint2.e
 Quant Time: Feb 20 05:21:33 2025
 Quant Method : Z:\pestpcbsrv\HPCHEM1\ECD_P\methods\PP012825.M
 Quant Title : GC EXTRACTABLES
 QLast Update : Wed Jan 29 00:13:21 2025
 Response via : Initial Calibration
 Integrator: ChemStation

Volume Inj. : 2 µl
 Signal #1 Phase : ZB-MR1 Signal #2 Phase: ZB-MR2
 Signal #1 Info : 30Mx0.32mmx 0.50µm Signal #2 Info : 30M x 0.32mm x 0.25µm





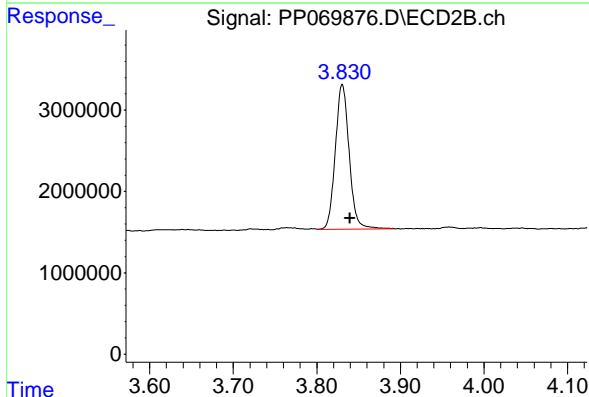
#1 Tetrachloro-m-xylene

R.T.: 4.528 min
 Delta R.T.: -0.010 min
 Response: 33330073
 Conc: 23.28 ng/ml

Instrument :
 ECD_P
 ClientSampleId :
 I.BLK

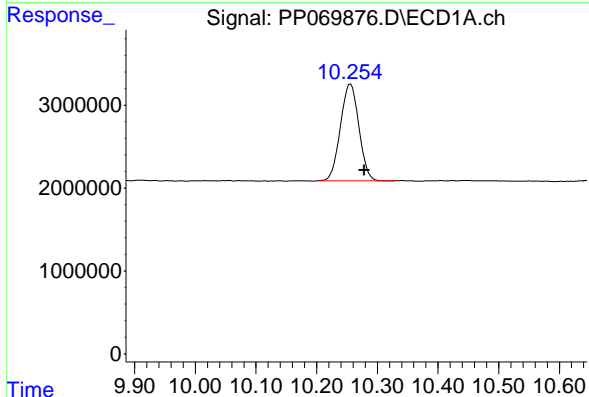
Manual Integrations
 APPROVED

Reviewed By :Yogesh Patel 02/20/2025
 Supervised By :Ankita Jodhani 02/20/2025



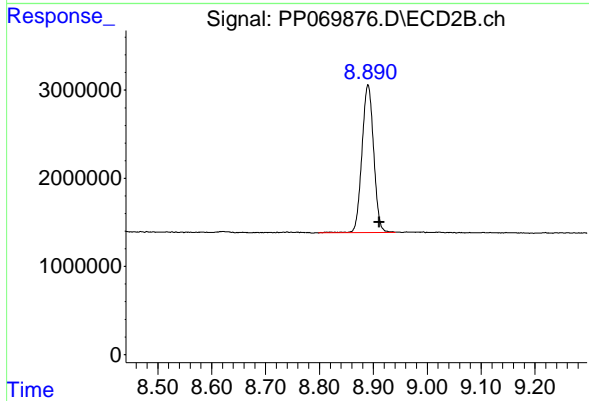
#1 Tetrachloro-m-xylene

R.T.: 3.830 min
 Delta R.T.: -0.010 min
 Response: 20529542
 Conc: 23.00 ng/ml m



#2 Decachlorobiphenyl

R.T.: 10.256 min
 Delta R.T.: -0.023 min
 Response: 24757589
 Conc: 22.65 ng/ml



#2 Decachlorobiphenyl

R.T.: 8.890 min
 Delta R.T.: -0.021 min
 Response: 25259689
 Conc: 22.58 ng/ml