

Data Path : Z:\pestpcbsrv\HPCHEM1\ECD_P\Data\PP022023\
 Data File : PP055803.D
 Signal(s) : Signal #1: ECD1A.ch Signal #2: ECD2B.ch
 Acq On : 20 Feb 2023 15:43
 Operator : YP\AJ
 Sample : AR1660CCC500
 Misc :
 ALS Vial : 3 Sample Multiplier: 1

Instrument :
 ECD_P
 ClientSampleId :
 AR1660CCC500

Integration File signal 1: autoint1.e
 Integration File signal 2: autoint2.e
 Quant Time: Feb 21 00:54:33 2023
 Quant Method : Z:\pestpcbsrv\HPCHEM1\ECD_P\methods\PP021723.M
 Quant Title : GC EXTRACTABLES
 QLast Update : Mon Feb 20 05:24:03 2023
 Response via : Initial Calibration
 Integrator: ChemStation

Volume Inj. : 2 µl
 Signal #1 Phase : ZB-MR2 Signal #2 Phase: ZB-MR2
 Signal #1 Info : 30Mx0.32mmx 0.50µ Signal #2 Info : 30M x 0.32mm x 0.25µm

Compound	RT#1	RT#2	Resp#1	Resp#2	ng/ml	ng/ml

System Monitoring Compounds						
1) SA Tetrachlo...	4.326	3.568	85512752	74337194	53.073	50.910
2) SA Decachlor...	10.080	8.577	106.7E6	58336846	52.312	51.421
Target Compounds						
3) L1 AR-1016-1	5.497	4.652	31070871	22521224	520.679	500.137
4) L1 AR-1016-2	5.519	4.670	46179892	32283268	527.835	497.095
5) L1 AR-1016-3	5.581	4.846	29232402	17520536	526.238	504.144
6) L1 AR-1016-4	5.681	4.889	23480855	15076226	526.932	504.378
7) L1 AR-1016-5	5.977	5.102	24536147	19345528	508.156	489.345
31) L7 AR-1260-1	7.108	6.138	51195590	35920073	494.433	492.720
32) L7 AR-1260-2	7.367	6.327	60271929	40140046	479.217	491.925
33) L7 AR-1260-3	7.728	6.480	46708435	38277696	531.822	452.956
34) L7 AR-1260-4	7.955	6.953	55210732	31327484	513.708	489.486
35) L7 AR-1260-5	8.272	7.197	107.6E6	66542276	521.411	491.597

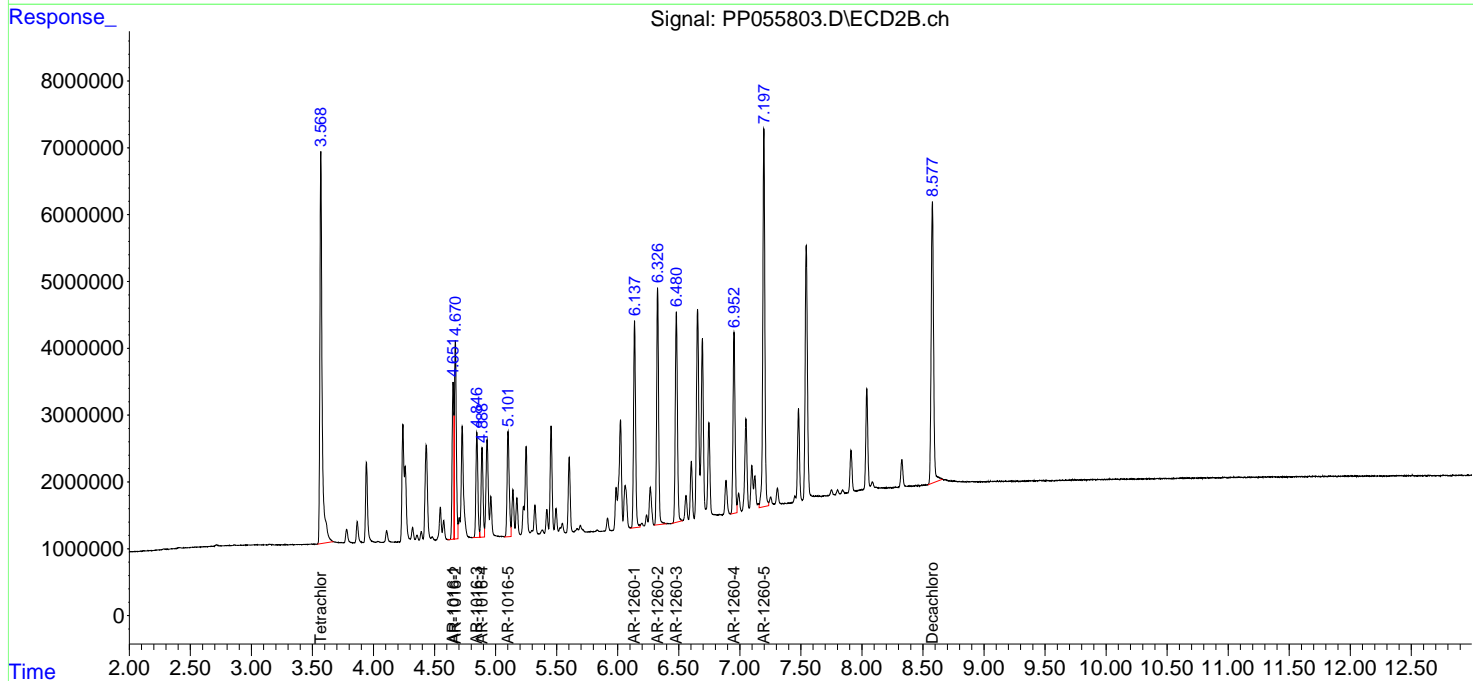
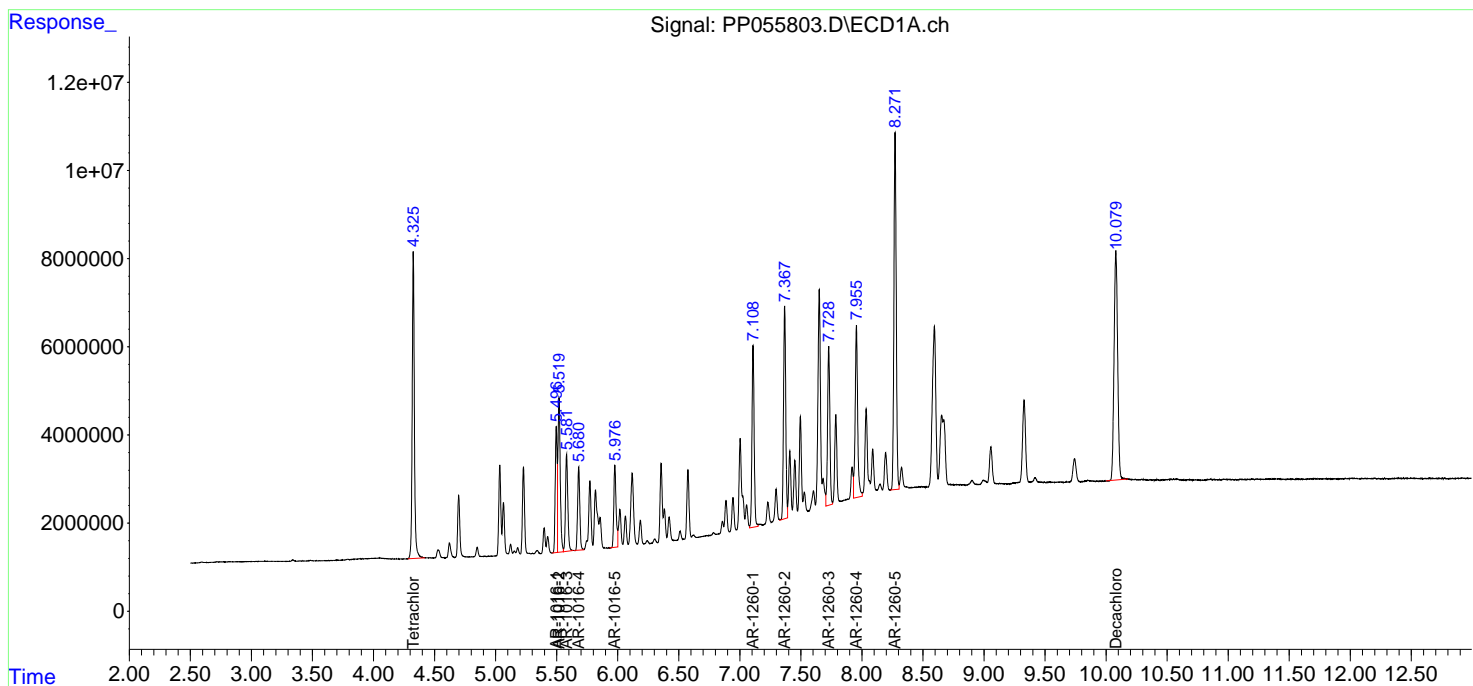
(f)=RT Delta > 1/2 Window (#)=Amounts differ by > 25% (m)=manual int.

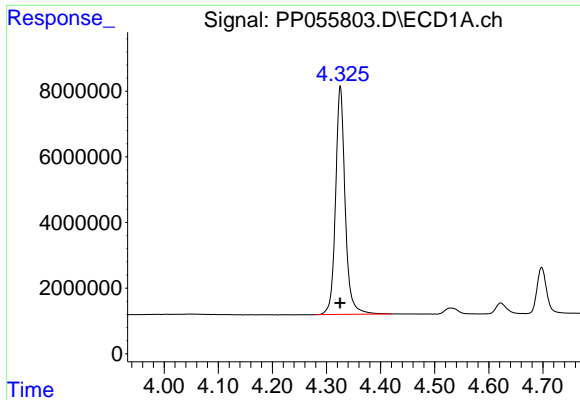
Data Path : Z:\pestpcbsrv\HPCHEM1\ECD_P\Data\PP022023\
 Data File : PP055803.D
 Signal(s) : Signal #1: ECD1A.ch Signal #2: ECD2B.ch
 Acq On : 20 Feb 2023 15:43
 Operator : YP\AJ
 Sample : AR1660CCC500
 Misc :
 ALS Vial : 3 Sample Multiplier: 1

Instrument :
 ECD_P
 ClientSampleId :
 AR1660CCC500

Integration File signal 1: autoint1.e
 Integration File signal 2: autoint2.e
 Quant Time: Feb 21 00:54:33 2023
 Quant Method : Z:\pestpcbsrv\HPCHEM1\ECD_P\methods\PP021723.M
 Quant Title : GC EXTRACTABLES
 QLast Update : Mon Feb 20 05:24:03 2023
 Response via : Initial Calibration
 Integrator: ChemStation

Volume Inj. : 2 µl
 Signal #1 Phase : ZB-MR1 Signal #2 Phase: ZB-MR2
 Signal #1 Info : 30Mx0.32mmx 0.50µ Signal #2 Info : 30M x 0.32mm x 0.25µm

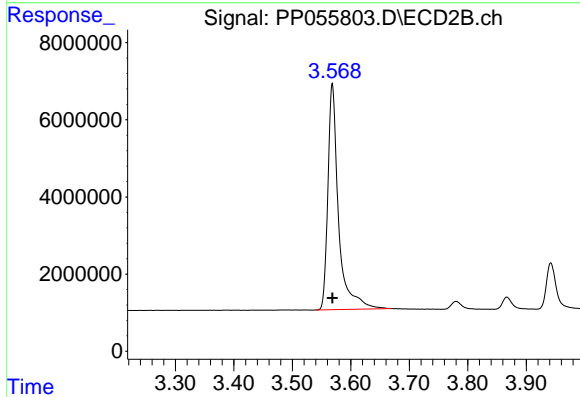




#1 Tetrachloro-m-xylene

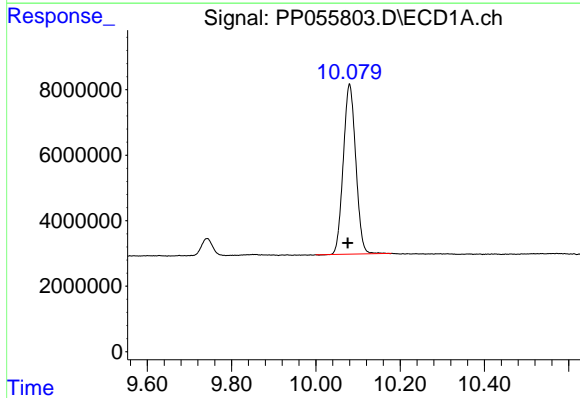
R.T.: 4.326 min
 Delta R.T.: 0.000 min
 Response: 85512752
 Conc: 53.07 ng/ml

Instrument :
 ECD_P
 ClientSampleId :
 AR1660CCC500



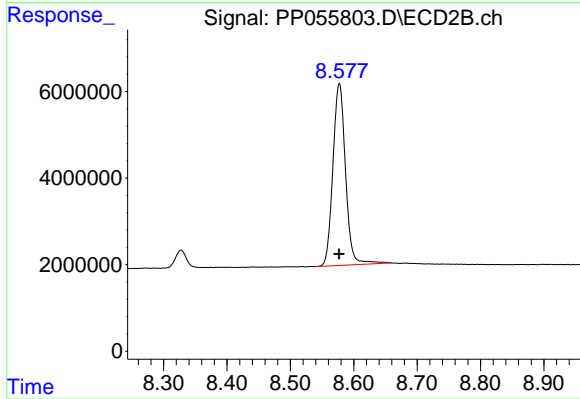
#1 Tetrachloro-m-xylene

R.T.: 3.568 min
 Delta R.T.: 0.000 min
 Response: 74337194
 Conc: 50.91 ng/ml



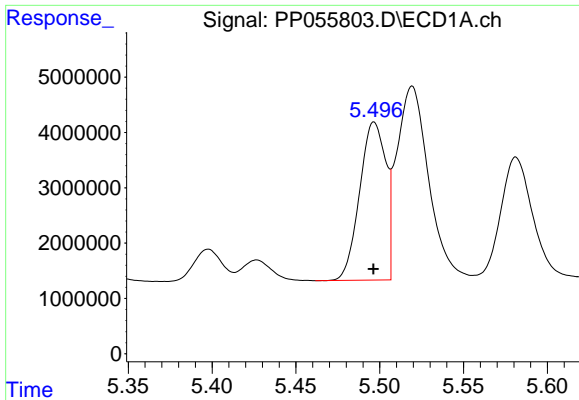
#2 Decachlorobiphenyl

R.T.: 10.080 min
 Delta R.T.: 0.004 min
 Response: 106713242
 Conc: 52.31 ng/ml



#2 Decachlorobiphenyl

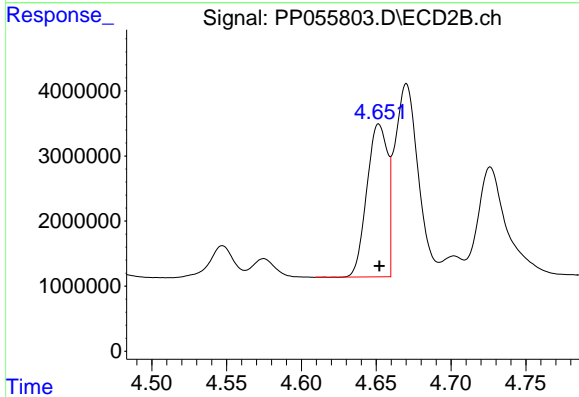
R.T.: 8.577 min
 Delta R.T.: 0.000 min
 Response: 58336846
 Conc: 51.42 ng/ml



#3 AR-1016-1

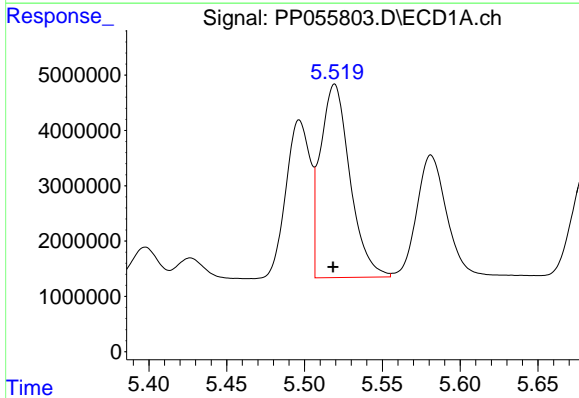
R.T.: 5.497 min
 Delta R.T.: 0.000 min
 Response: 31070871
 Conc: 520.68 ng/ml

Instrument :
 ECD_P
 ClientSampleId :
 AR1660CCC500



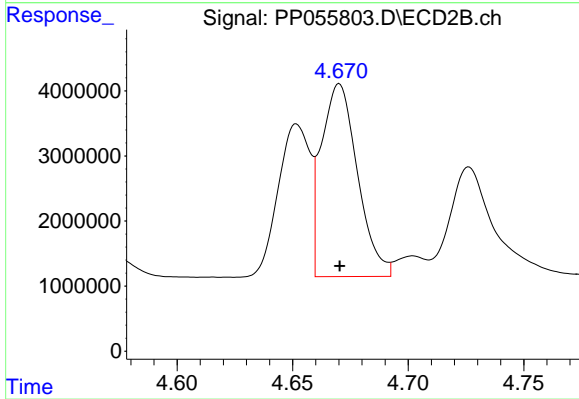
#3 AR-1016-1

R.T.: 4.652 min
 Delta R.T.: 0.000 min
 Response: 22521224
 Conc: 500.14 ng/ml



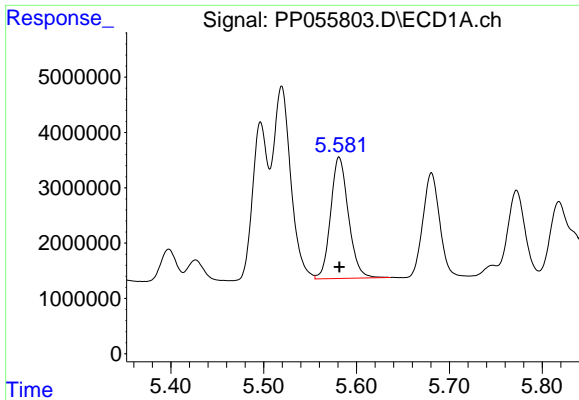
#4 AR-1016-2

R.T.: 5.519 min
 Delta R.T.: 0.001 min
 Response: 46179892
 Conc: 527.84 ng/ml



#4 AR-1016-2

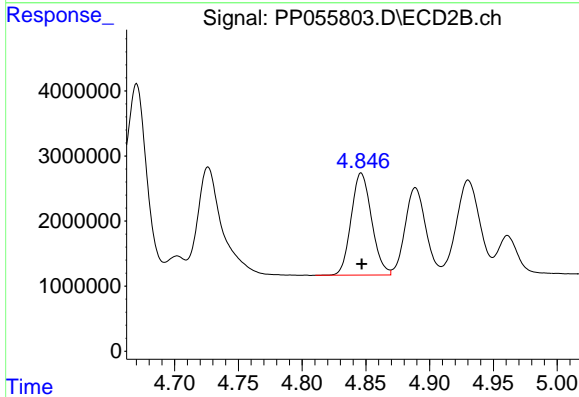
R.T.: 4.670 min
 Delta R.T.: 0.000 min
 Response: 32283268
 Conc: 497.09 ng/ml



#5 AR-1016-3

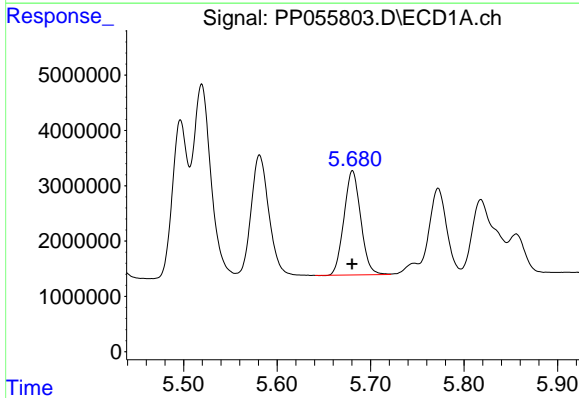
R.T.: 5.581 min
 Delta R.T.: 0.000 min
 Response: 29232402
 Conc: 526.24 ng/ml

Instrument :
 ECD_P
 ClientSampleId :
 AR1660CCC500



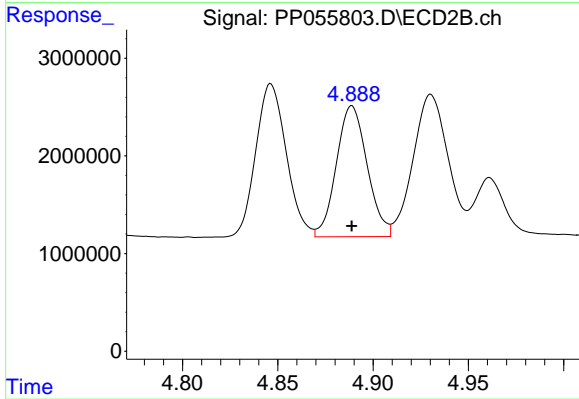
#5 AR-1016-3

R.T.: 4.846 min
 Delta R.T.: 0.000 min
 Response: 17520536
 Conc: 504.14 ng/ml



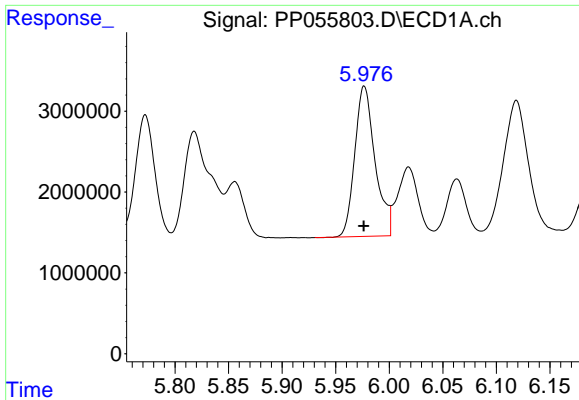
#6 AR-1016-4

R.T.: 5.681 min
 Delta R.T.: 0.000 min
 Response: 23480855
 Conc: 526.93 ng/ml



#6 AR-1016-4

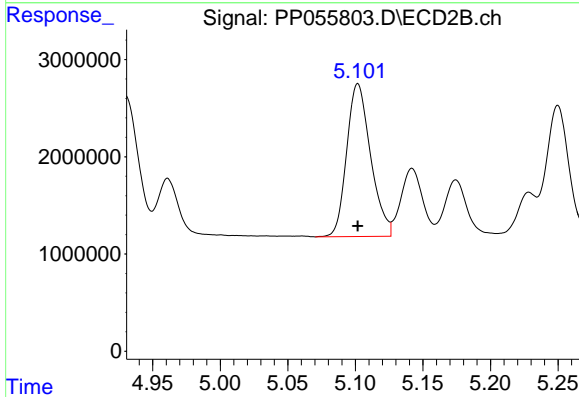
R.T.: 4.889 min
 Delta R.T.: 0.000 min
 Response: 15076226
 Conc: 504.38 ng/ml



#7 AR-1016-5

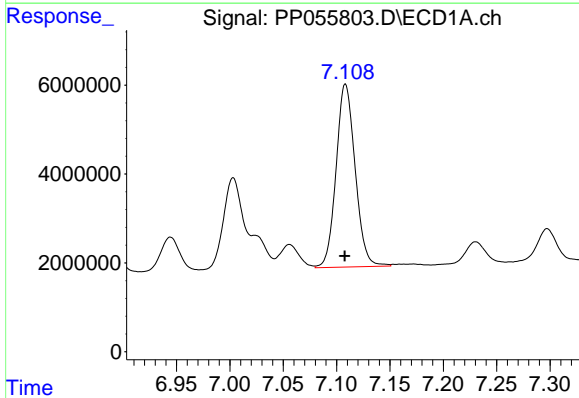
R.T.: 5.977 min
 Delta R.T.: 0.000 min
 Response: 24536147
 Conc: 508.16 ng/ml

Instrument :
 ECD_P
 ClientSampleId :
 AR1660CCC500



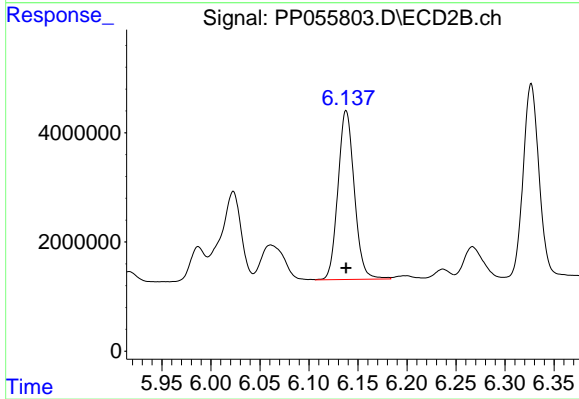
#7 AR-1016-5

R.T.: 5.102 min
 Delta R.T.: 0.000 min
 Response: 19345528
 Conc: 489.34 ng/ml



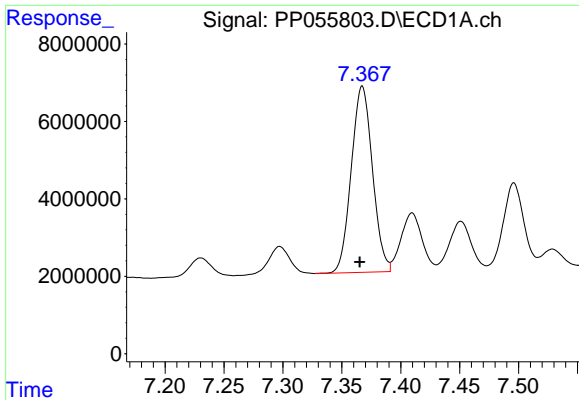
#31 AR-1260-1

R.T.: 7.108 min
 Delta R.T.: 0.000 min
 Response: 51195590
 Conc: 494.43 ng/ml



#31 AR-1260-1

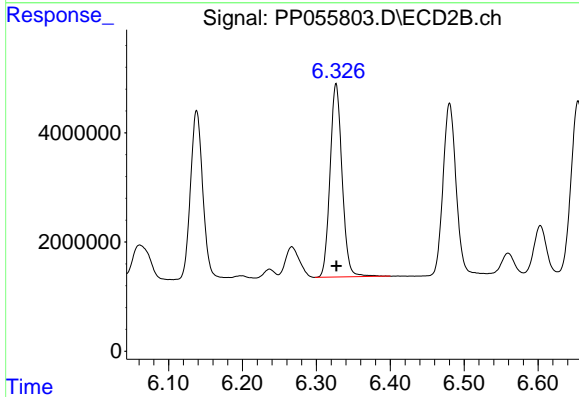
R.T.: 6.138 min
 Delta R.T.: 0.000 min
 Response: 35920073
 Conc: 492.72 ng/ml



#32 AR-1260-2

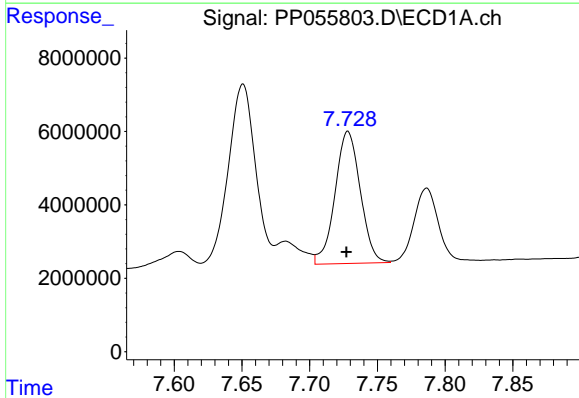
R.T.: 7.367 min
 Delta R.T.: 0.002 min
 Response: 60271929
 Conc: 479.22 ng/ml

Instrument :
 ECD_P
 ClientSampleId :
 AR1660CCC500



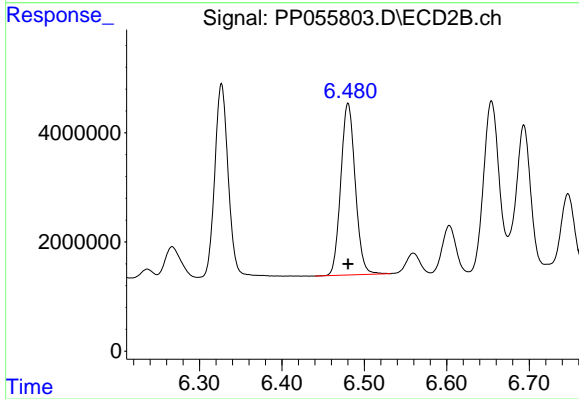
#32 AR-1260-2

R.T.: 6.327 min
 Delta R.T.: 0.000 min
 Response: 40140046
 Conc: 491.93 ng/ml



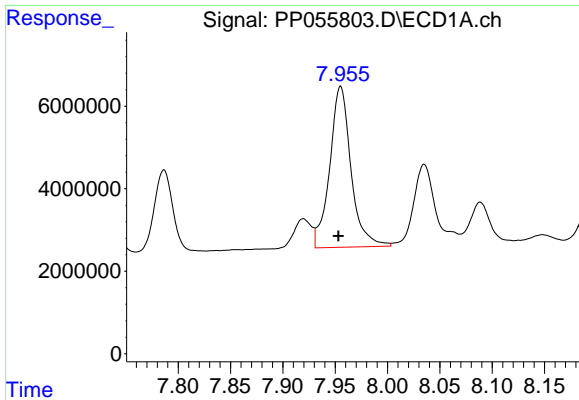
#33 AR-1260-3

R.T.: 7.728 min
 Delta R.T.: 0.001 min
 Response: 46708435
 Conc: 531.82 ng/ml



#33 AR-1260-3

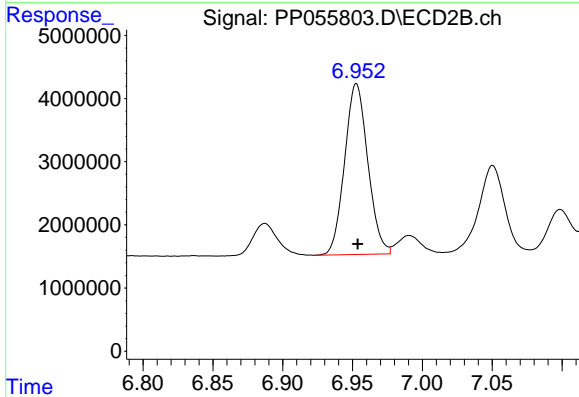
R.T.: 6.480 min
 Delta R.T.: 0.000 min
 Response: 38277696
 Conc: 452.96 ng/ml



#34 AR-1260-4

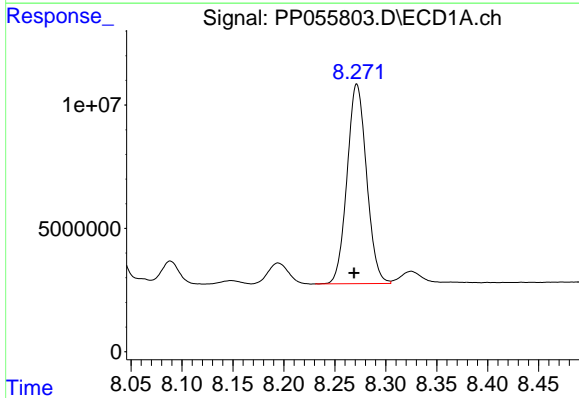
R.T.: 7.955 min
 Delta R.T.: 0.002 min
 Response: 55210732
 Conc: 513.71 ng/ml

Instrument :
 ECD_P
 ClientSampleId :
 AR1660CCC500



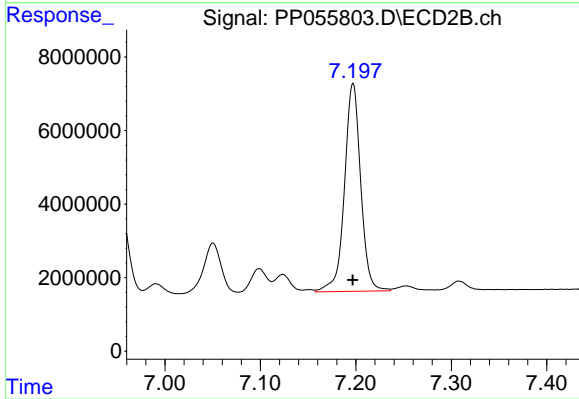
#34 AR-1260-4

R.T.: 6.953 min
 Delta R.T.: 0.000 min
 Response: 31327484
 Conc: 489.49 ng/ml



#35 AR-1260-5

R.T.: 8.272 min
 Delta R.T.: 0.003 min
 Response: 107644789
 Conc: 521.41 ng/ml



#35 AR-1260-5

R.T.: 7.197 min
 Delta R.T.: 0.000 min
 Response: 66542276
 Conc: 491.60 ng/ml