

Data Path : Z:\pestpcbsrv\HPCHEM1\ECD_P\Data\PP022025\
 Data File : PP069924.D
 Signal(s) : Signal #1: ECD1A.ch Signal #2: ECD2B.ch
 Acq On : 20 Feb 2025 18:57
 Operator : YP\AJ
 Sample : Q1388-01MS
 Misc :
 ALS Vial : 19 Sample Multiplier: 1

Instrument :
 ECD_P
ClientSampleId :
 72-12016MS

Manual Integrations
APPROVED
 Reviewed By :Yogesh Patel 02/21/2025
 Supervised By :Ankita Jodhani 02/21/2025

Integration File signal 1: autoint1.e
 Integration File signal 2: autoint2.e
 Quant Time: Feb 21 04:52:36 2025
 Quant Method : Z:\pestpcbsrv\HPCHEM1\ECD_P\methods\PP012825.M
 Quant Title : GC EXTRACTABLES
 QLast Update : Wed Jan 29 00:13:21 2025
 Response via : Initial Calibration
 Integrator: ChemStation

Volume Inj. : 2 µl
 Signal #1 Phase : ZB-MR1 Signal #2 Phase: ZB-MR2
 Signal #1 Info : 30Mx0.32mmx 0.50µ Signal #2 Info : 30M x 0.32mm x 0.25µm

Compound	RT#1	RT#2	Resp#1	Resp#2	ng/ml	ng/ml

System Monitoring Compounds						
1) SA Tetrachlo...	4.523	3.830	36551438	21784144	25.534m	24.407m
2) SA Decachlor...	10.252	8.889	24667587	23524330	22.571	21.032
Target Compounds						
3) L1 AR-1016-1	5.675	4.920	21907081	14180001	472.818m	434.769m
4) L1 AR-1016-2	5.698	4.939	33414325	20499813	492.276m	455.973
5) L1 AR-1016-3	5.760	5.116	19689314	11519602	462.227m	462.932
6) L1 AR-1016-4	5.857	5.158	16815520	9124764	480.437m	451.804
7) L1 AR-1016-5	6.150	5.373	14790308	11784913	447.397m	439.344
31) L7 AR-1260-1	7.271	6.412	28154521	24105382	481.799	499.806
32) L7 AR-1260-2	7.524	6.600	37299578	30034515	479.350	489.930
33) L7 AR-1260-3	7.883	6.754	25194995	18848534	402.996	313.325
34) L7 AR-1260-4	8.107	7.226	31424794	19738864	476.301	424.787
35) L7 AR-1260-5	8.428	7.467	55502576	49729787	423.924	447.431

(f)=RT Delta > 1/2 Window (#)=Amounts differ by > 25% (m)=manual int.

Data Path : Z:\pestpcbsrv\HPCHEM1\ECD_P\Data\PP022025\
 Data File : PP069924.D
 Signal(s) : Signal #1: ECD1A.ch Signal #2: ECD2B.ch
 Acq On : 20 Feb 2025 18:57
 Operator : YP\AJ
 Sample : Q1388-01MS
 Misc :
 ALS Vial : 19 Sample Multiplier: 1

Instrument :

ECD_P

ClientSampleId :

72-12016MS

Manual Integrations

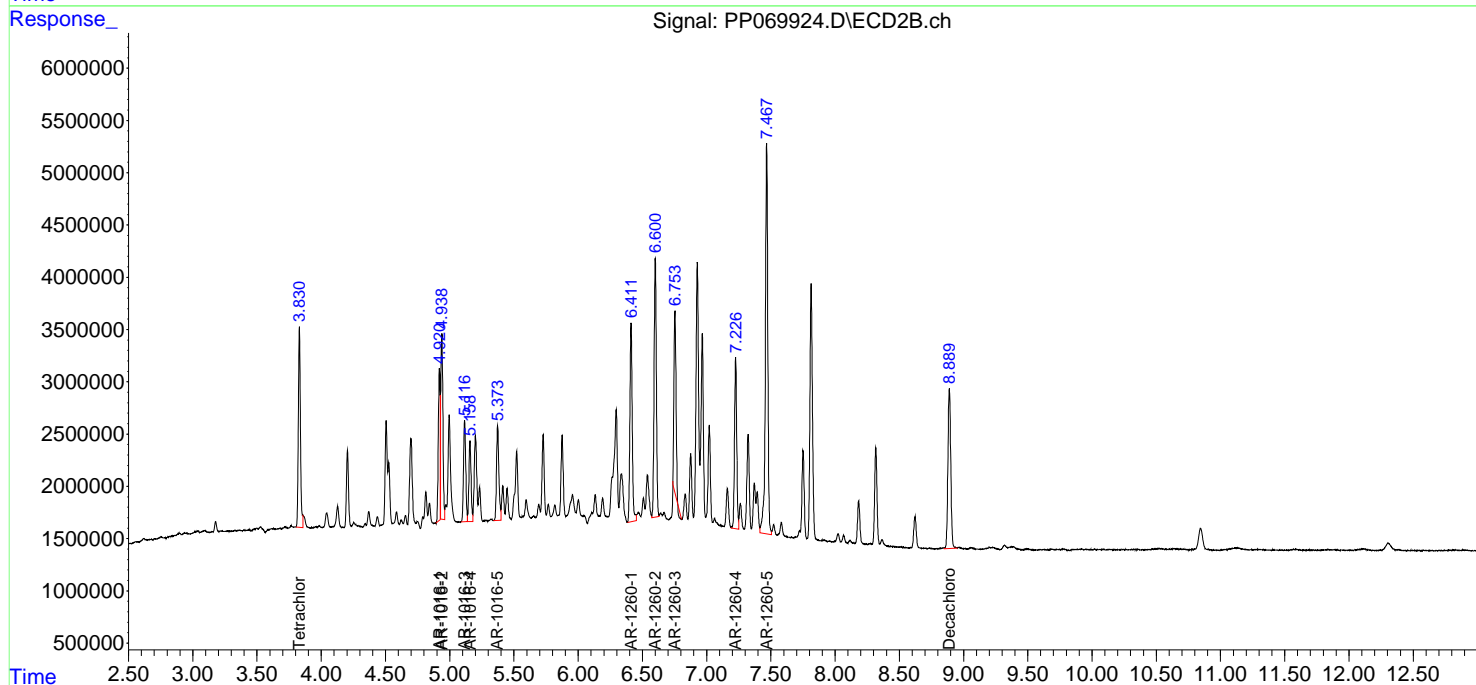
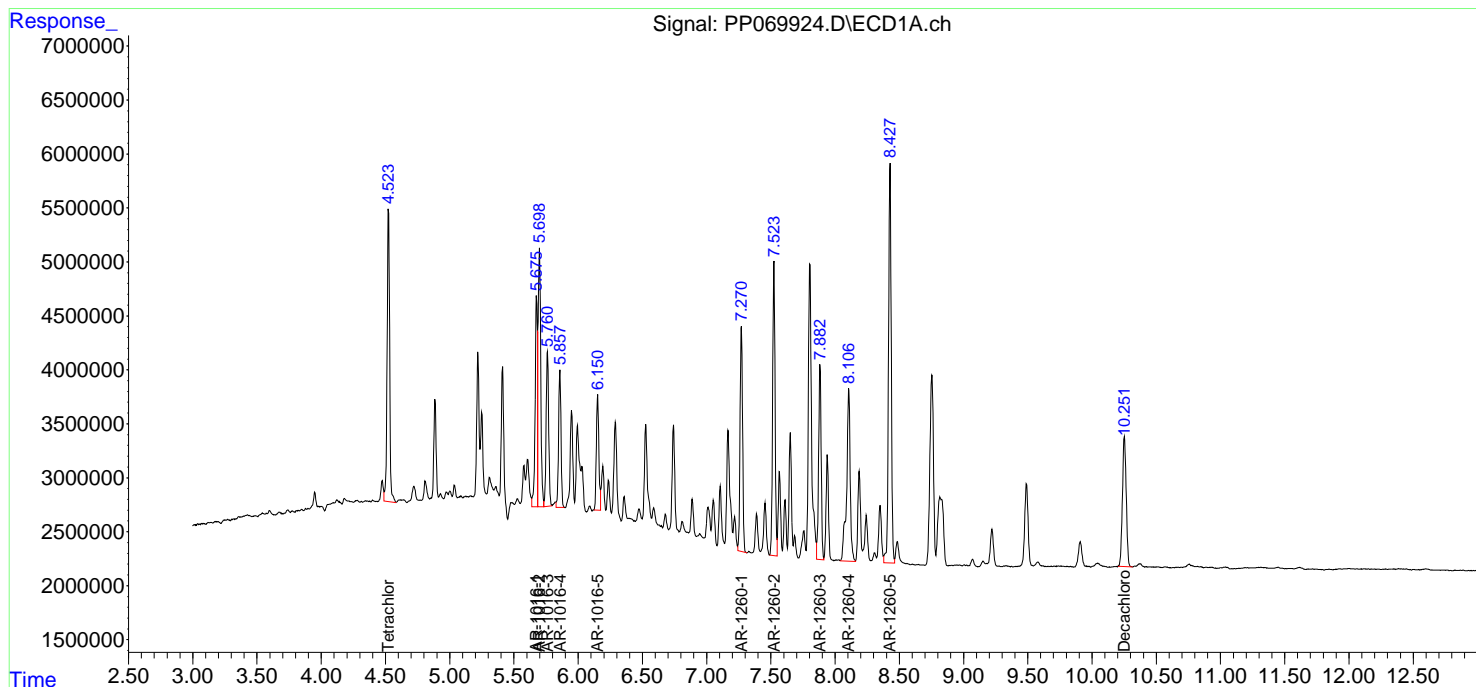
APPROVED

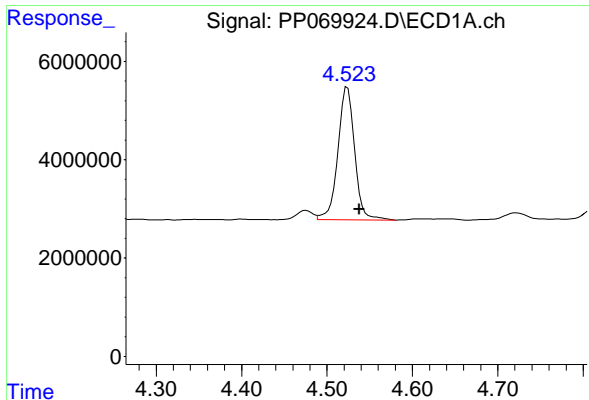
Reviewed By :Yogesh Patel 02/21/2025

Supervised By :Ankita Jodhani 02/21/2025

Integration File signal 1: autoint1.e
 Integration File signal 2: autoint2.e
 Quant Time: Feb 21 04:52:36 2025
 Quant Method : Z:\pestpcbsrv\HPCHEM1\ECD_P\methods\PP012825.M
 Quant Title : GC EXTRACTABLES
 QLast Update : Wed Jan 29 00:13:21 2025
 Response via : Initial Calibration
 Integrator: ChemStation

Volume Inj. : 2 µl
 Signal #1 Phase : ZB-MR1 Signal #2 Phase: ZB-MR2
 Signal #1 Info : 30Mx0.32mmx 0.50µm Signal #2 Info : 30M x 0.32mm x 0.25µm





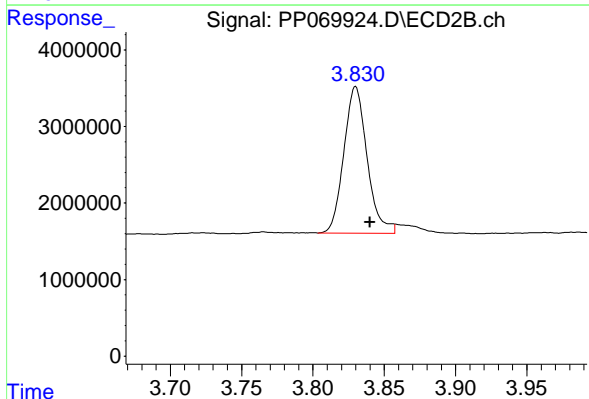
#1 Tetrachloro-m-xylene

R.T.: 4.523 min
 Delta R.T.: -0.015 min
 Response: 36551438
 Conc: 25.53 ng/ml

Instrument : ECD_P
 Client Sample Id : 72-12016MS

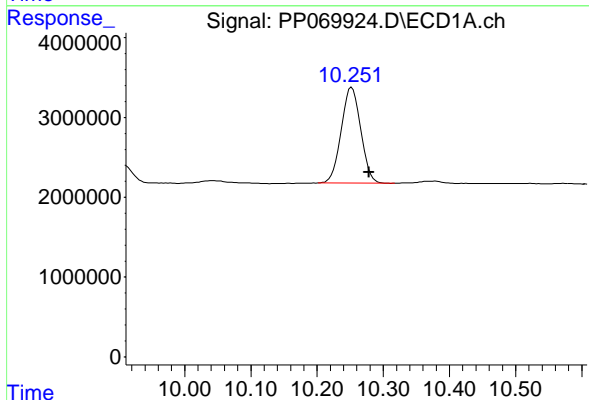
Manual Integrations
 APPROVED

Reviewed By :Yogesh Patel 02/21/2025
 Supervised By :Ankita Jodhani 02/21/2025



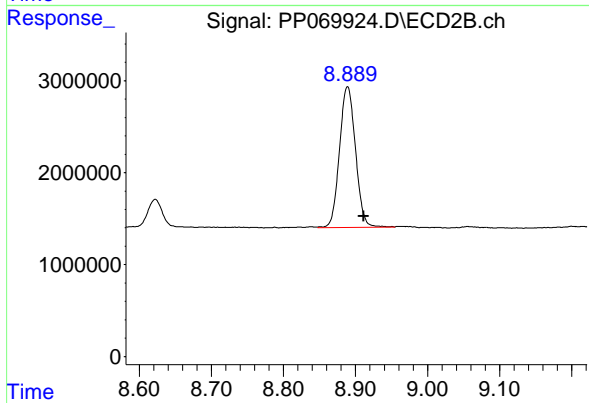
#1 Tetrachloro-m-xylene

R.T.: 3.830 min
 Delta R.T.: -0.010 min
 Response: 21784144
 Conc: 24.41 ng/ml m



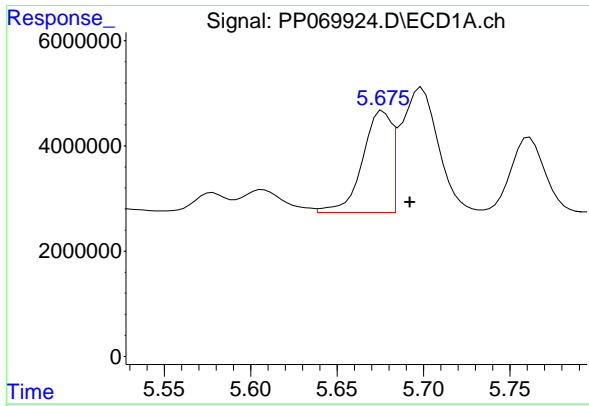
#2 Decachlorobiphenyl

R.T.: 10.252 min
 Delta R.T.: -0.026 min
 Response: 24667587
 Conc: 22.57 ng/ml



#2 Decachlorobiphenyl

R.T.: 8.889 min
 Delta R.T.: -0.022 min
 Response: 23524330
 Conc: 21.03 ng/ml



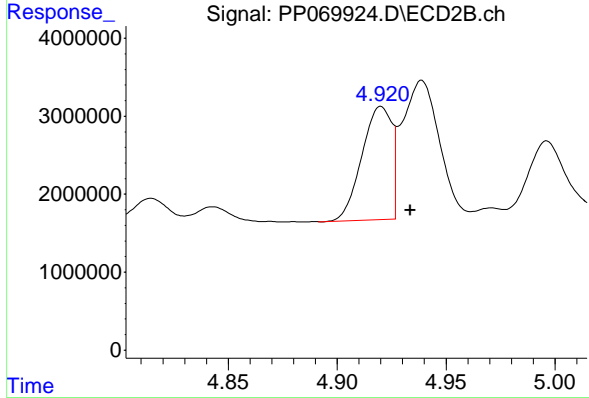
#3 AR-1016-1

R.T.: 5.675 min
 Delta R.T.: -0.017 min
 Response: 21907081
 Conc: 472.82 ng/ml

Instrument : ECD_P
 ClientSampleId : 72-12016MS

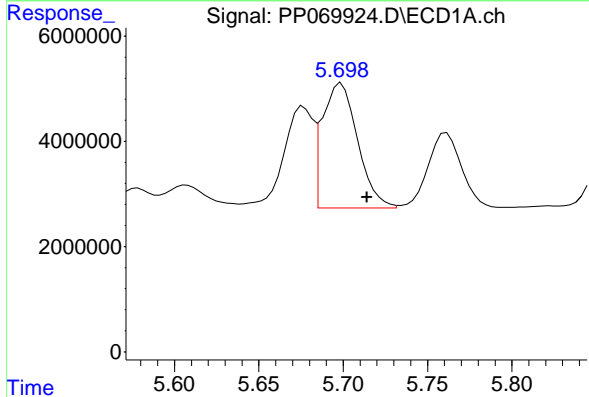
Manual Integrations
 APPROVED

Reviewed By :Yogesh Patel 02/21/2025
 Supervised By :Ankita Jodhani 02/21/2025



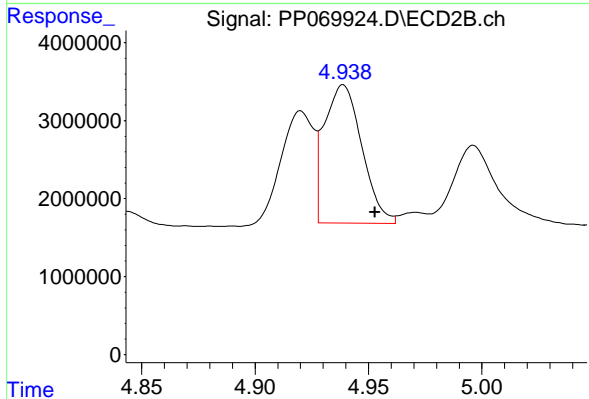
#3 AR-1016-1

R.T.: 4.920 min
 Delta R.T.: -0.014 min
 Response: 14180001
 Conc: 434.77 ng/ml m



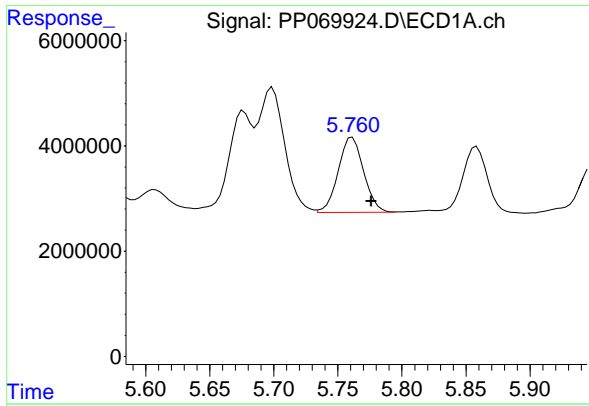
#4 AR-1016-2

R.T.: 5.698 min
 Delta R.T.: -0.017 min
 Response: 33414325
 Conc: 492.28 ng/ml m



#4 AR-1016-2

R.T.: 4.939 min
 Delta R.T.: -0.014 min
 Response: 20499813
 Conc: 455.97 ng/ml



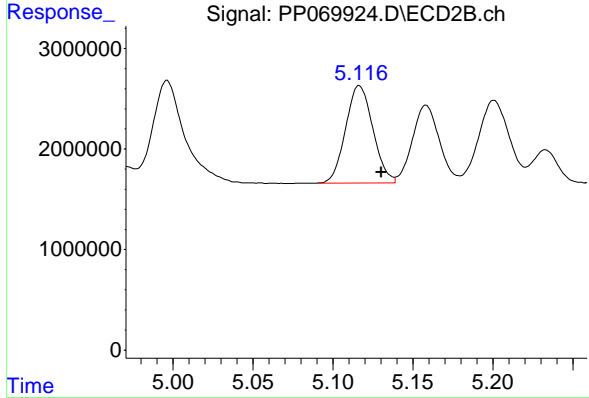
#5 AR-1016-3

R.T.: 5.760 min
 Delta R.T.: -0.016 min
 Response: 19689314
 Conc: 462.23 ng/ml

Instrument : ECD_P
 Client Sample Id : 72-12016MS

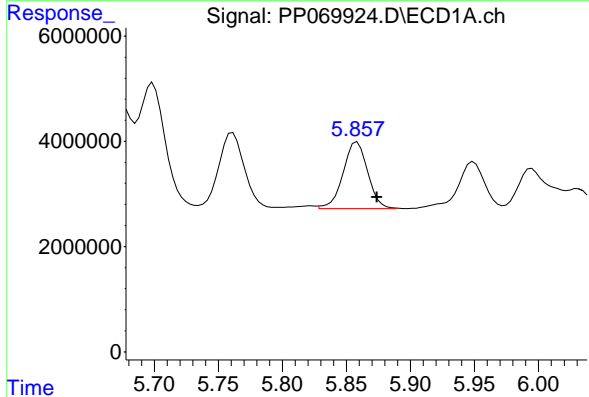
Manual Integrations
 APPROVED

Reviewed By :Yogesh Patel 02/21/2025
 Supervised By :Ankita Jodhani 02/21/2025



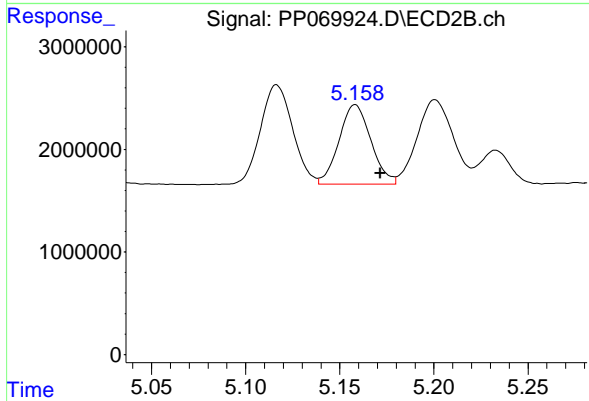
#5 AR-1016-3

R.T.: 5.116 min
 Delta R.T.: -0.014 min
 Response: 11519602
 Conc: 462.93 ng/ml



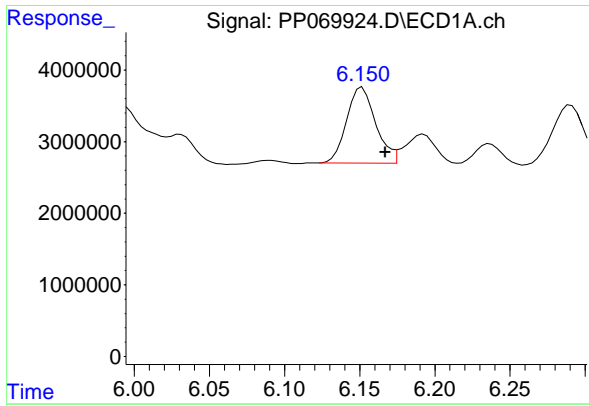
#6 AR-1016-4

R.T.: 5.857 min
 Delta R.T.: -0.017 min
 Response: 16815520
 Conc: 480.44 ng/ml m



#6 AR-1016-4

R.T.: 5.158 min
 Delta R.T.: -0.013 min
 Response: 9124764
 Conc: 451.80 ng/ml



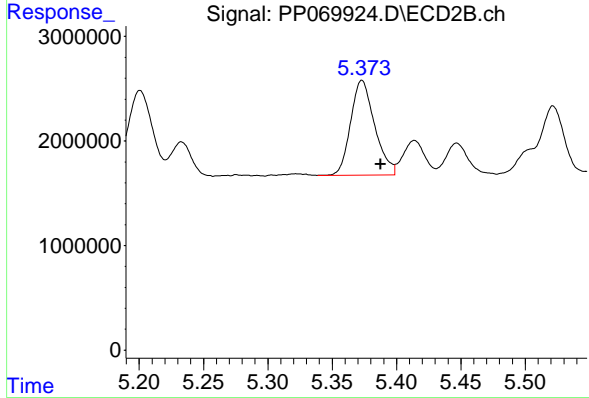
#7 AR-1016-5

R.T.: 6.150 min
 Delta R.T.: -0.017 min
 Response: 14790308
 Conc: 447.40 ng/ml

Instrument : ECD_P
 Client Sample Id : 72-12016MS

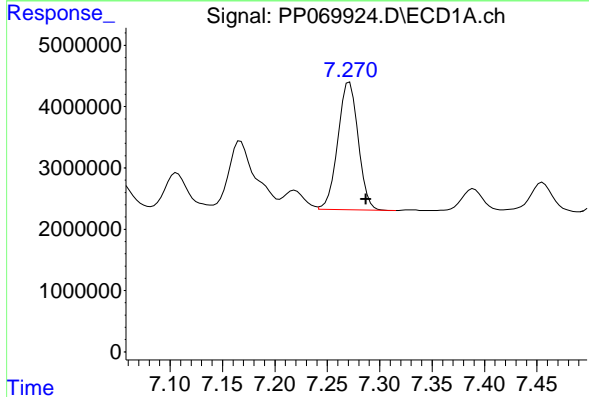
Manual Integrations
 APPROVED

Reviewed By :Yogesh Patel 02/21/2025
 Supervised By :Ankita Jodhani 02/21/2025



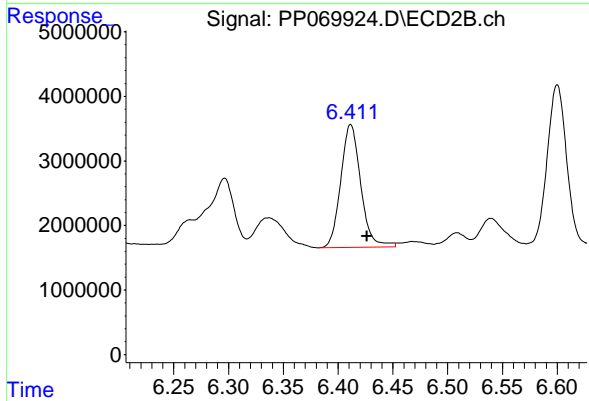
#7 AR-1016-5

R.T.: 5.373 min
 Delta R.T.: -0.015 min
 Response: 11784913
 Conc: 439.34 ng/ml



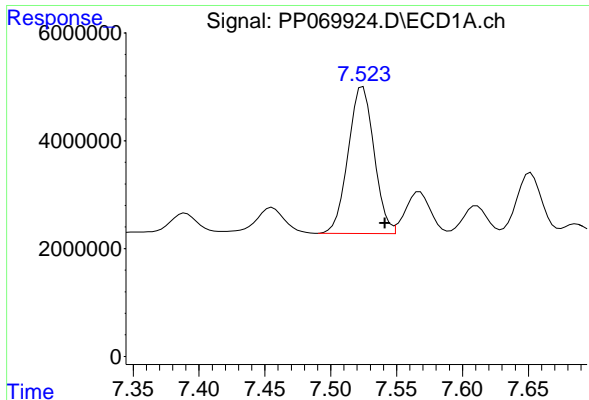
#31 AR-1260-1

R.T.: 7.271 min
 Delta R.T.: -0.016 min
 Response: 28154521
 Conc: 481.80 ng/ml



#31 AR-1260-1

R.T.: 6.412 min
 Delta R.T.: -0.015 min
 Response: 24105382
 Conc: 499.81 ng/ml



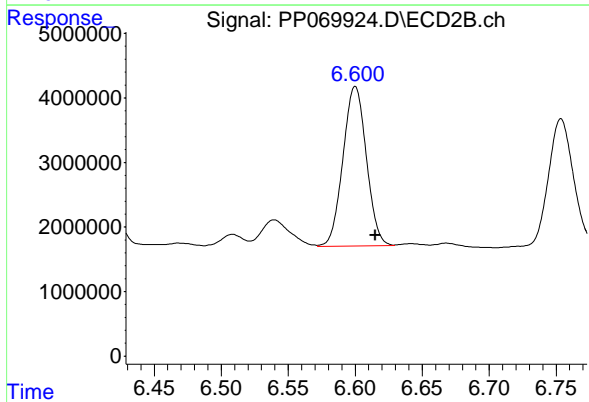
#32 AR-1260-2

R.T.: 7.524 min
 Delta R.T.: -0.017 min
 Response: 37299578
 Conc: 479.35 ng/ml

Instrument : ECD_P
 Client Sample Id : 72-12016MS

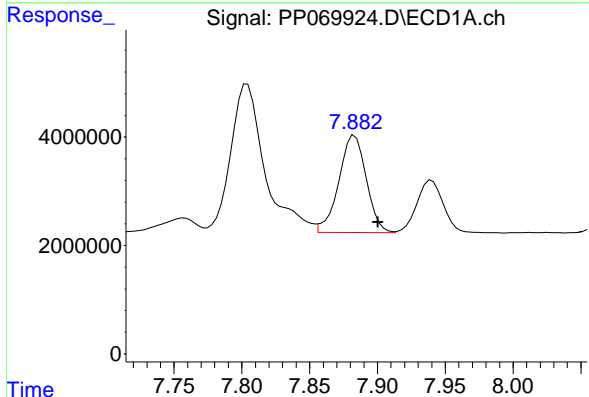
Manual Integrations
 APPROVED

Reviewed By :Yogesh Patel 02/21/2025
 Supervised By :Ankita Jodhani 02/21/2025



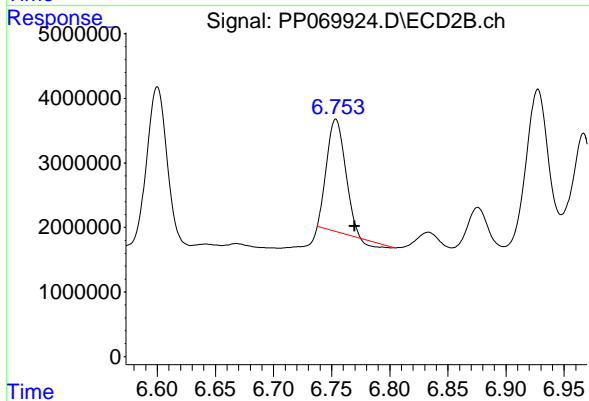
#32 AR-1260-2

R.T.: 6.600 min
 Delta R.T.: -0.015 min
 Response: 30034515
 Conc: 489.93 ng/ml



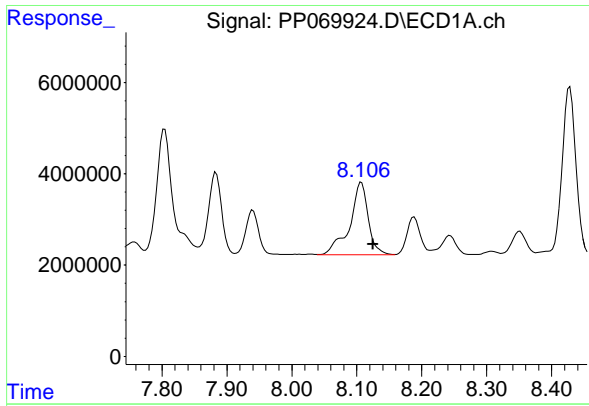
#33 AR-1260-3

R.T.: 7.883 min
 Delta R.T.: -0.017 min
 Response: 25194995
 Conc: 403.00 ng/ml



#33 AR-1260-3

R.T.: 6.754 min
 Delta R.T.: -0.016 min
 Response: 18848534
 Conc: 313.33 ng/ml



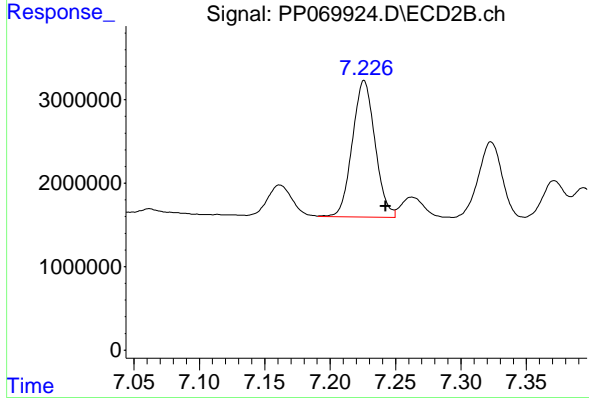
#34 AR-1260-4

R.T.: 8.107 min
 Delta R.T.: -0.018 min
 Response: 31424794
 Conc: 476.30 ng/ml

Instrument : ECD_P
 Client Sample Id : 72-12016MS

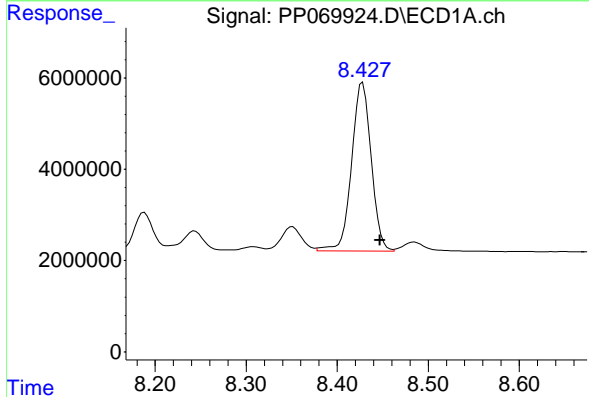
Manual Integrations
 APPROVED

Reviewed By :Yogesh Patel 02/21/2025
 Supervised By :Ankita Jodhani 02/21/2025



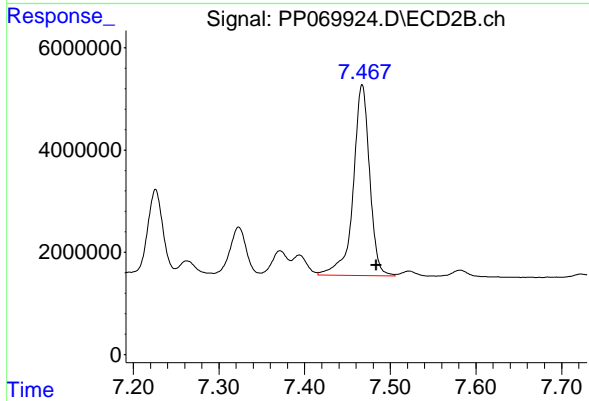
#34 AR-1260-4

R.T.: 7.226 min
 Delta R.T.: -0.016 min
 Response: 19738864
 Conc: 424.79 ng/ml



#35 AR-1260-5

R.T.: 8.428 min
 Delta R.T.: -0.019 min
 Response: 55502576
 Conc: 423.92 ng/ml



#35 AR-1260-5

R.T.: 7.467 min
 Delta R.T.: -0.016 min
 Response: 49729787
 Conc: 447.43 ng/ml