

Data Path : Z:\pestpcbsrv\HPCHEM1\ECD_P\Data\PP022119\
 Data File : PP029167.D
 Signal(s) : Signal #1: ECD1A.CH Signal #2: ECD2B.CH
 Acq On : 21 Feb 2019 14:42
 Operator : EI\MA
 Sample : HSTDCCC750
 Misc : hexane
 ALS Vial : 3 Sample Multiplier: 1

Instrument :
 ECD_P
 ClientSampleId :
 HSTDCCC750

Integration File signal 1: autoint1.e
 Integration File signal 2: autoint2.e
 Quant Time: Feb 22 02:26:28 2019
 Quant Method : Z:\pestpcbsrv\HPCHEM1\ECD_P\methods\PP022119.M
 Quant Title : 8080.M
 QLast Update : Fri Feb 22 02:24:04 2019
 Response via : Initial Calibration
 Integrator: ChemStation 6890 Scale Mode: Large solvent peaks clipped

Volume Inj. : 2 µl
 Signal #1 Phase : ZB-CLPesticides-1 Signal #2 Phase: ZB-CLPesticides-2
 Signal #1 Info : 30M x 0.32mm x0.5 Signal #2 Info : 30M x 0.32mm x 0.25µm

Compound	RT#1	RT#2	Resp#1	Resp#2	ng/ml	ng/ml

System Monitoring Compounds						
4) S 2,4-DCAA	11.941	12.129	21963926	28913325	730.758	761.829
Target Compounds						
1) T Dalapon	3.248	2.959	38385386	34652958	655.281	669.646
2) T 3,5-DICHL...	10.350	10.216	40475165	35537917	656.161	701.181
3) T 4-Nitroph...	11.505	11.274	47844278	16609091	698.419	693.553
5) T DICAMBA	12.263	12.441	87767149	93287881	660.058	728.810
8) T DICHLORPROP	13.453	13.553	20323389	24354292	658.662	720.354
9) T 2,4-D	13.801	14.039	25875465	32510247	659.966	716.976
10) T Pentachlo...	14.218	14.646	428.7E6	386.3E6	657.961	750.619
11) T 2,4,5-TP ...	15.078	15.217	154.0E6	151.5E6	649.046	744.950
12) T 2,4,5-T	15.466	15.866	137.8E6	119.1E6	652.775	719.116
13) T 2,4-DB	16.225	16.461	12215131	15779126	639.458	700.467
14) T DINOSEB	17.687	16.851	93676294	93672732	643.246	714.665
15) T Picloram	17.477	18.247	190.2E6	154.9E6	683.971	688.354
16) T DCPA	18.071	18.120	183.8E6	168.1E6	650.829	723.433

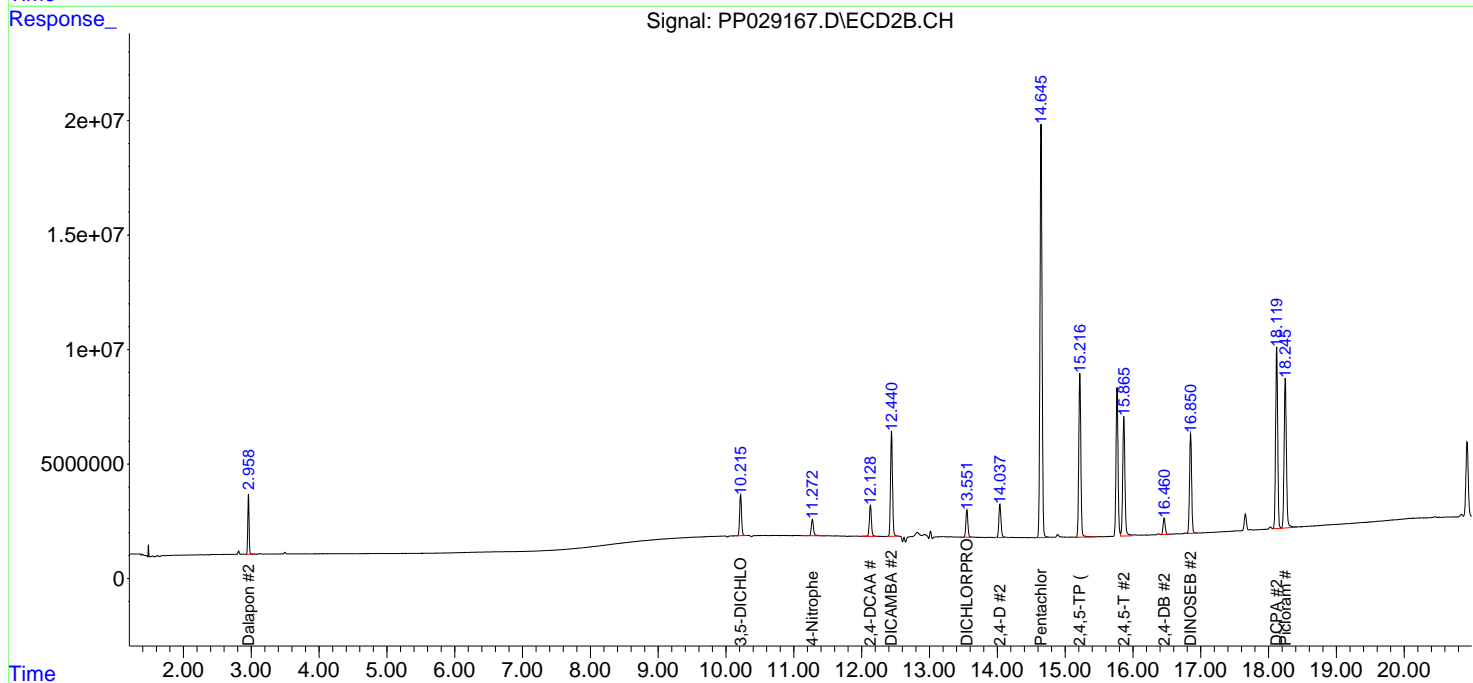
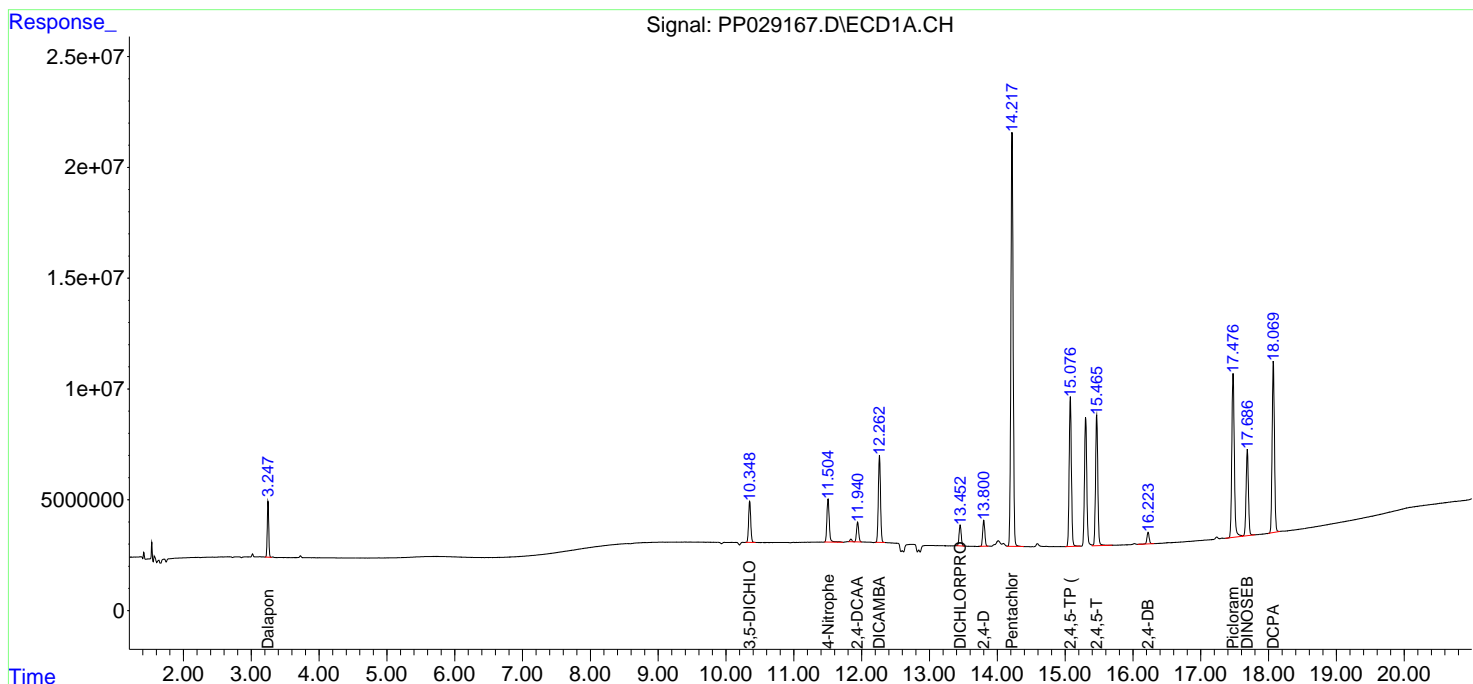
(f)=RT Delta > 1/2 Window (#)=Amounts differ by > 25% (m)=manual int.

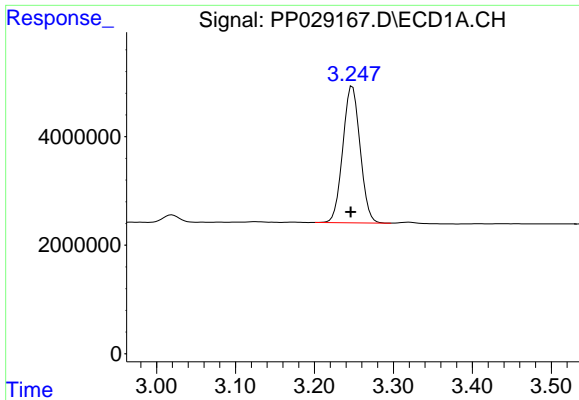
Data Path : Z:\pestpcbsrv\HPCHEM1\ECD_P\Data\PP022119\
 Data File : PP029167.D
 Signal(s) : Signal #1: ECD1A.CH Signal #2: ECD2B.CH
 Acq On : 21 Feb 2019 14:42
 Operator : EI\MA
 Sample : HSTDCCC750
 Misc : hexane
 ALS Vial : 3 Sample Multiplier: 1

Instrument :
 ECD_P
 ClientSampleID :
 HSTDCCC750

Integration File signal 1: autoint1.e
 Integration File signal 2: autoint2.e
 Quant Time: Feb 22 02:26:28 2019
 Quant Method : Z:\pestpcbsrv\HPCHEM1\ECD_P\methods\PP022119.M
 Quant Title : 8080.M
 QLast Update : Fri Feb 22 02:24:04 2019
 Response via : Initial Calibration
 Integrator: ChemStation 6890 Scale Mode: Large solvent peaks clipped

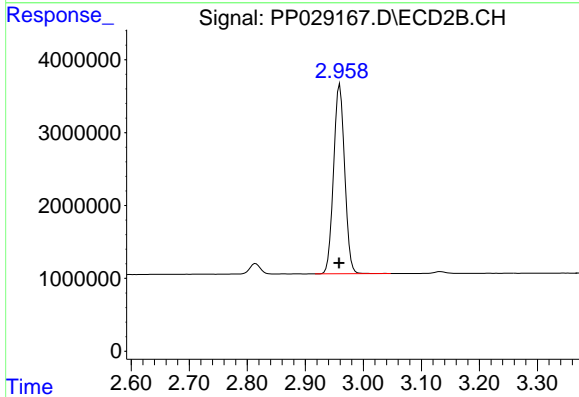
Volume Inj. : 2 µl
 Signal #1 Phase : ZB-CLPesticides-1 Signal #2 Phase: ZB-CLPesticides-2
 Signal #1 Info : 30M x 0.32mm x0.5 Signal #2 Info : 30M x 0.32mm x 0.25µm



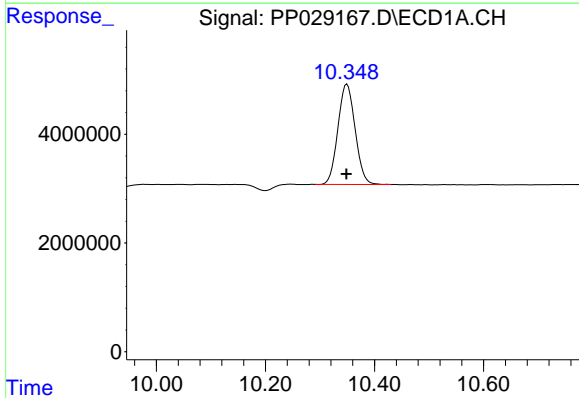


#1 Dalapon
 R.T.: 3.248 min
 Delta R.T.: 0.002 min
 Response: 38385386
 Conc: 655.28 ng/ml

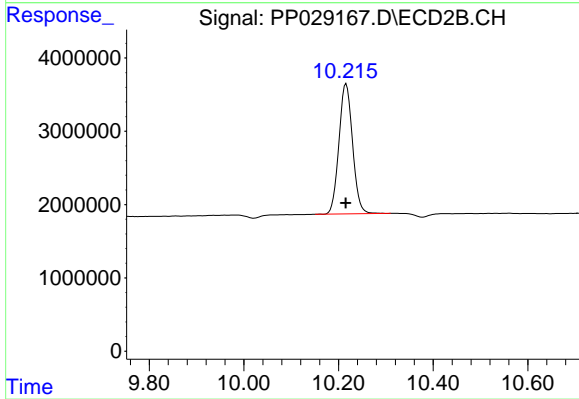
Instrument :
 ECD_P
 ClientSampleId :
 HSTDCCC750



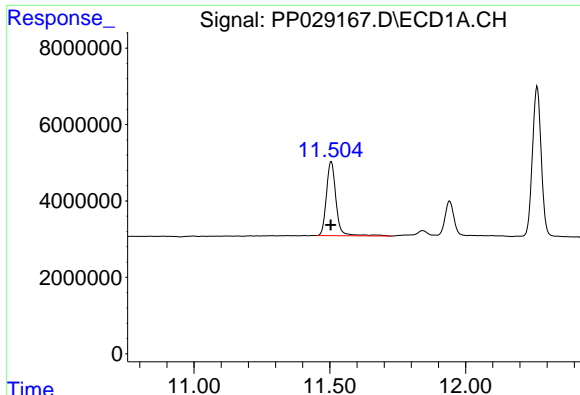
#1 Dalapon
 R.T.: 2.959 min
 Delta R.T.: 0.001 min
 Response: 34652958
 Conc: 669.65 ng/ml



#2 3,5-DICHLOROBENZOIC ACID
 R.T.: 10.350 min
 Delta R.T.: 0.001 min
 Response: 40475165
 Conc: 656.16 ng/ml

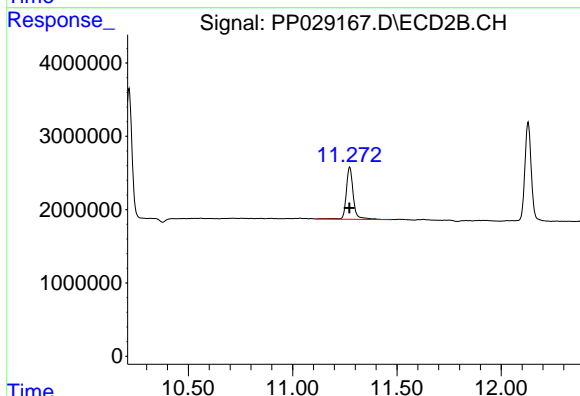


#2 3,5-DICHLOROBENZOIC ACID
 R.T.: 10.216 min
 Delta R.T.: 0.001 min
 Response: 35537917
 Conc: 701.18 ng/ml

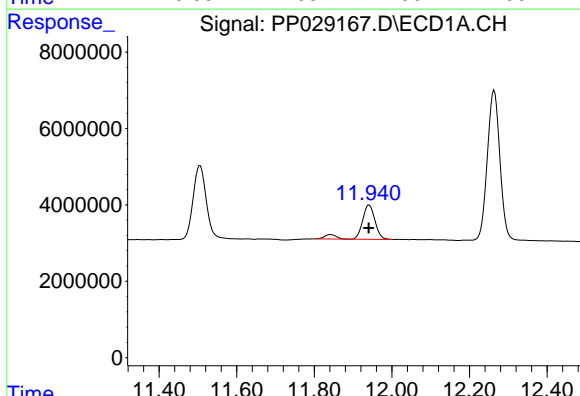


#3 4-Nitrophenol
R.T.: 11.505 min
Delta R.T.: 0.002 min
Response: 47844278
Conc: 698.42 ng/ml

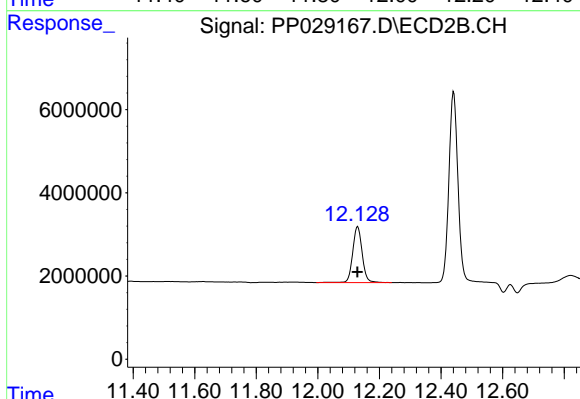
Instrument :
ECD_P
ClientSampleId :
HSTDCCC750



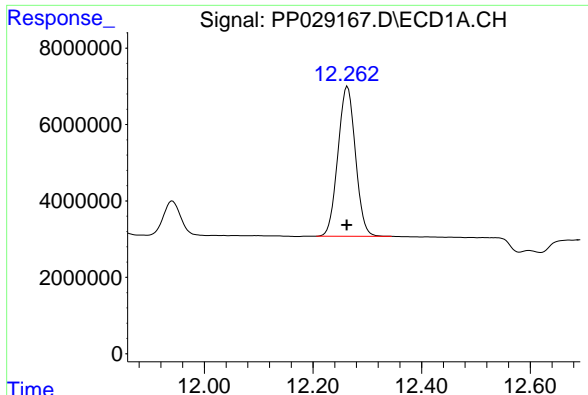
#3 4-Nitrophenol
R.T.: 11.274 min
Delta R.T.: 0.000 min
Response: 16609091
Conc: 693.55 ng/ml



#4 2,4-DCAA
R.T.: 11.941 min
Delta R.T.: 0.000 min
Response: 21963926
Conc: 730.76 ng/ml

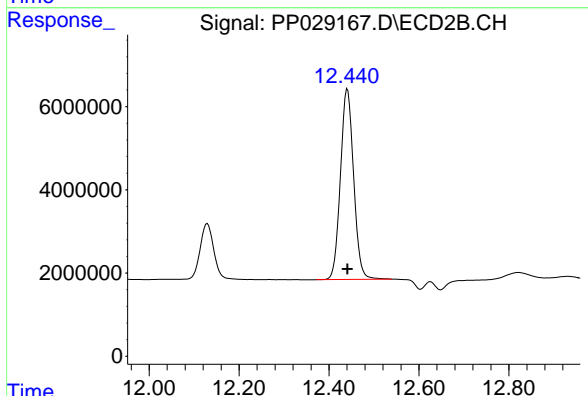


#4 2,4-DCAA
R.T.: 12.129 min
Delta R.T.: 0.000 min
Response: 28913325
Conc: 761.83 ng/ml

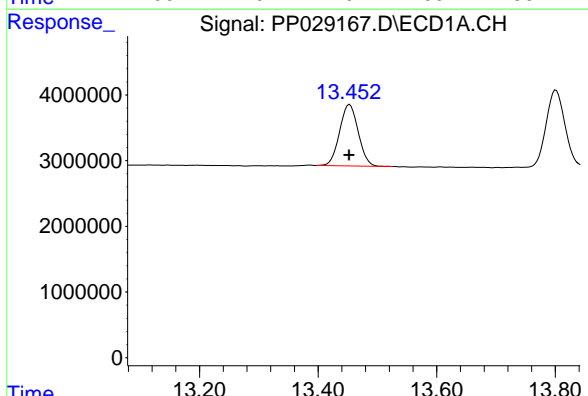


#5 DICAMBA
 R.T.: 12.263 min
 Delta R.T.: 0.000 min
 Response: 87767149
 Conc: 660.06 ng/ml

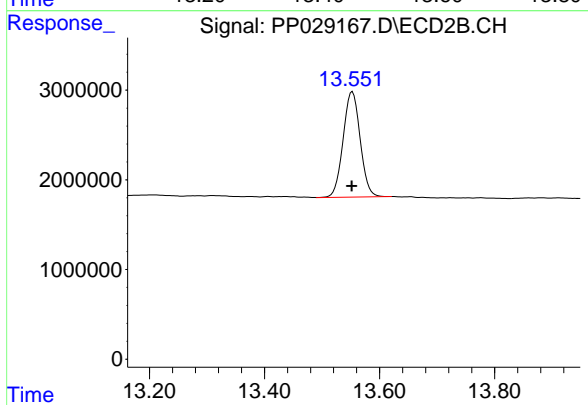
Instrument :
 ECD_P
 ClientSampled :
 HSTDCCC750



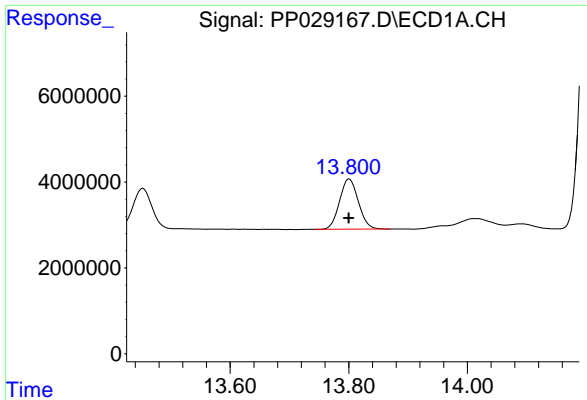
#5 DICAMBA
 R.T.: 12.441 min
 Delta R.T.: 0.000 min
 Response: 93287881
 Conc: 728.81 ng/ml



#8 DICHLORPROP
 R.T.: 13.453 min
 Delta R.T.: 0.001 min
 Response: 20323389
 Conc: 658.66 ng/ml

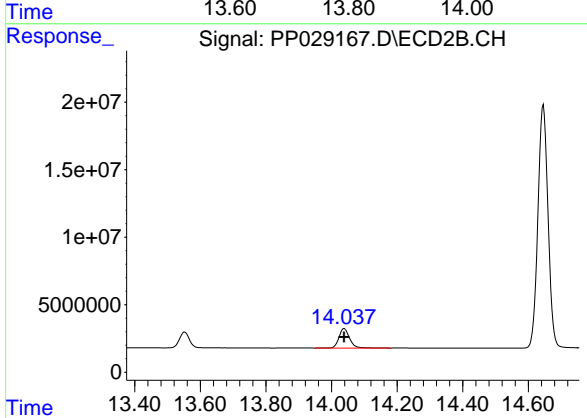


#8 DICHLORPROP
 R.T.: 13.553 min
 Delta R.T.: 0.001 min
 Response: 24354292
 Conc: 720.35 ng/ml

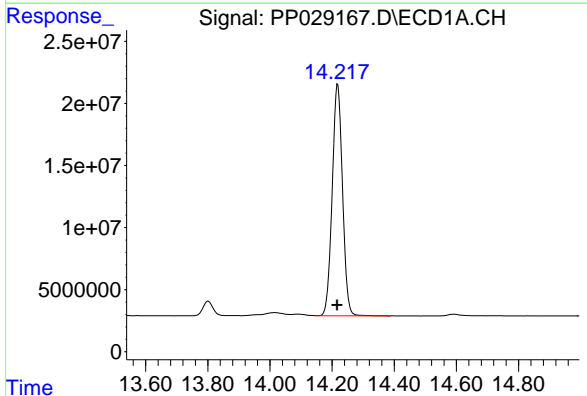


#9 2,4-D
 R.T.: 13.801 min
 Delta R.T.: 0.001 min
 Response: 25875465
 Conc: 659.97 ng/ml

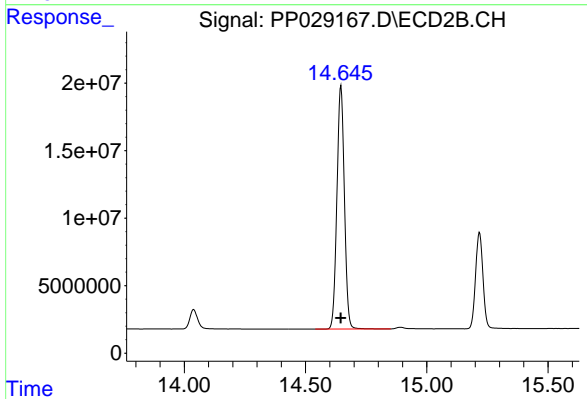
Instrument :
 ECD_P
 ClientSampleId :
 HSTDCCC750



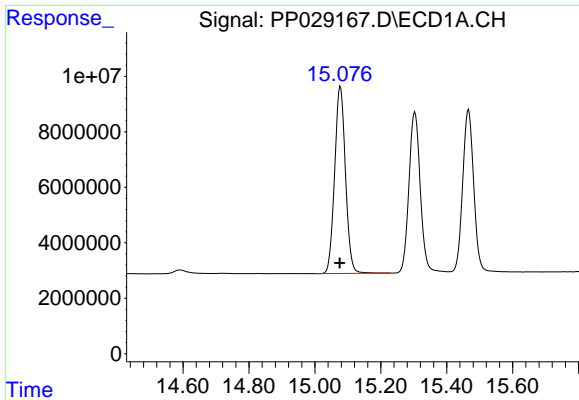
#9 2,4-D
 R.T.: 14.039 min
 Delta R.T.: 0.000 min
 Response: 32510247
 Conc: 716.98 ng/ml



#10 Pentachlorophenol
 R.T.: 14.218 min
 Delta R.T.: 0.002 min
 Response: 428749046
 Conc: 657.96 ng/ml

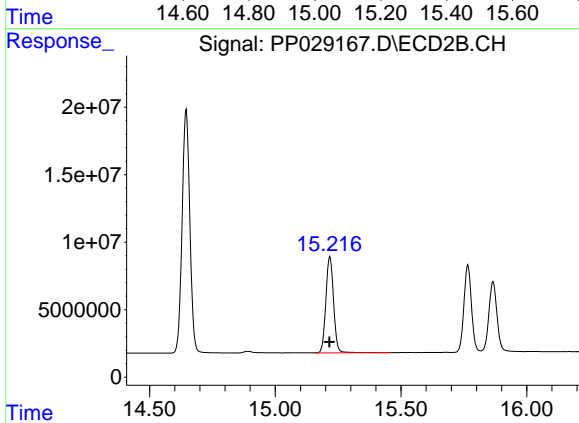


#10 Pentachlorophenol
 R.T.: 14.646 min
 Delta R.T.: 0.000 min
 Response: 386318633
 Conc: 750.62 ng/ml

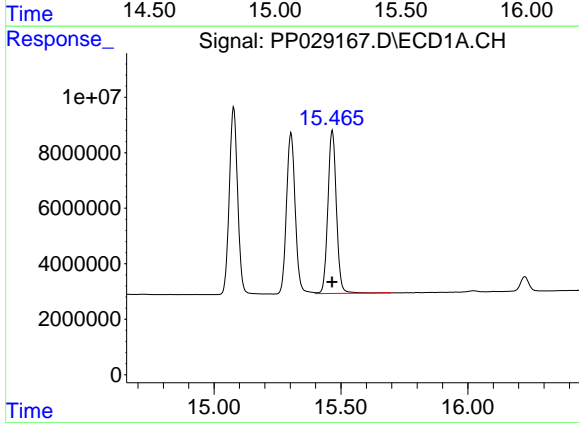


#11 2,4,5-TP (SILVEX)
 R.T.: 15.078 min
 Delta R.T.: 0.002 min
 Response: 153980861
 Conc: 649.05 ng/ml

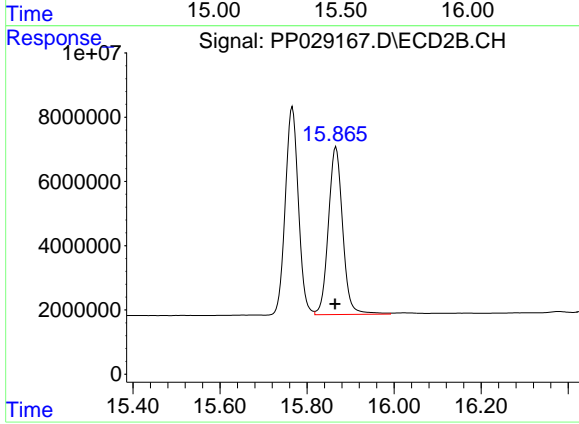
Instrument :
 ECD_P
 ClientSampleId :
 HSTDCCC750



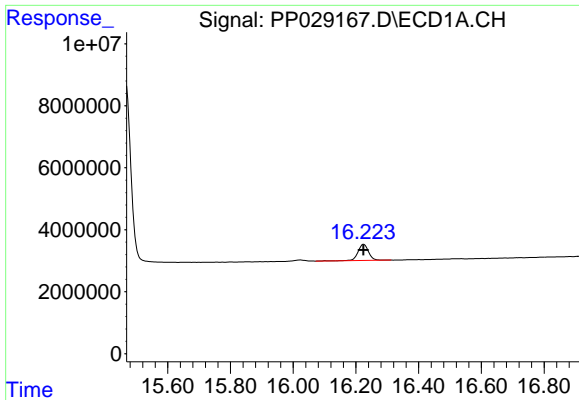
#11 2,4,5-TP (SILVEX)
 R.T.: 15.217 min
 Delta R.T.: 0.002 min
 Response: 151527934
 Conc: 744.95 ng/ml



#12 2,4,5-T
 R.T.: 15.466 min
 Delta R.T.: 0.002 min
 Response: 137810110
 Conc: 652.77 ng/ml

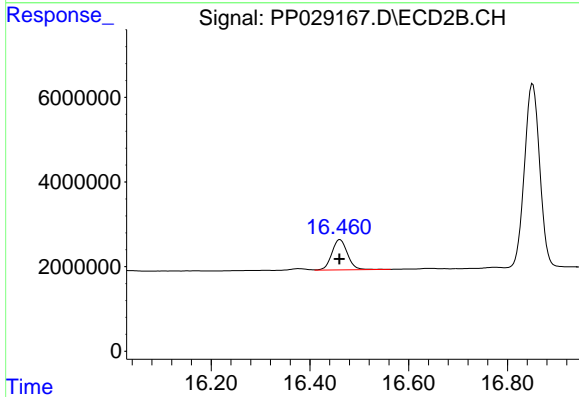


#12 2,4,5-T
 R.T.: 15.866 min
 Delta R.T.: 0.002 min
 Response: 119066001
 Conc: 719.12 ng/ml

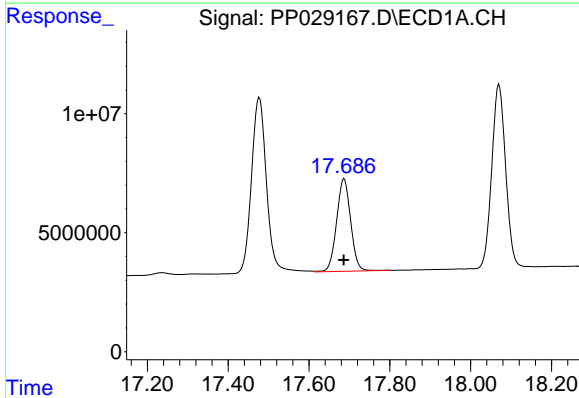


#13 2,4-DB
 R.T.: 16.225 min
 Delta R.T.: 0.001 min
 Response: 12215131
 Conc: 639.46 ng/ml

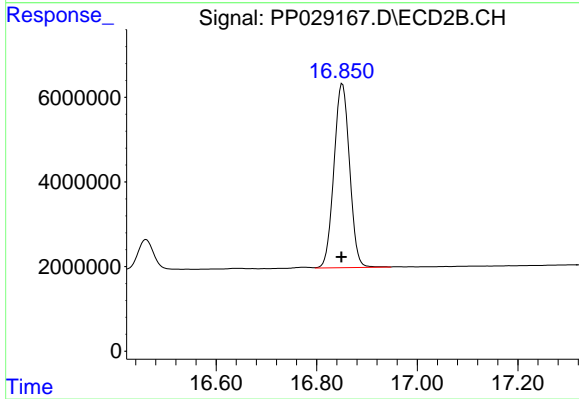
Instrument :
 ECD_P
 ClientSampleId :
 HSTDCCC750



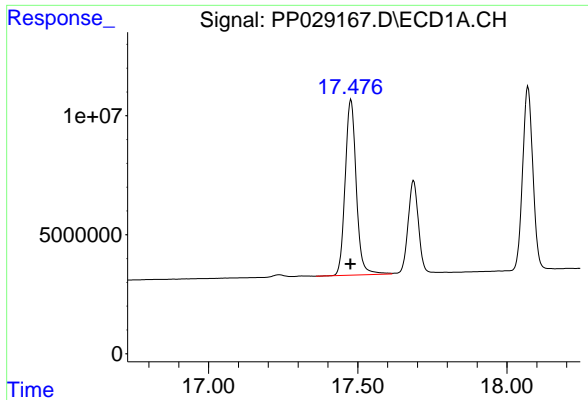
#13 2,4-DB
 R.T.: 16.461 min
 Delta R.T.: 0.001 min
 Response: 15779126
 Conc: 700.47 ng/ml



#14 DINOSEB
 R.T.: 17.687 min
 Delta R.T.: 0.001 min
 Response: 93676294
 Conc: 643.25 ng/ml



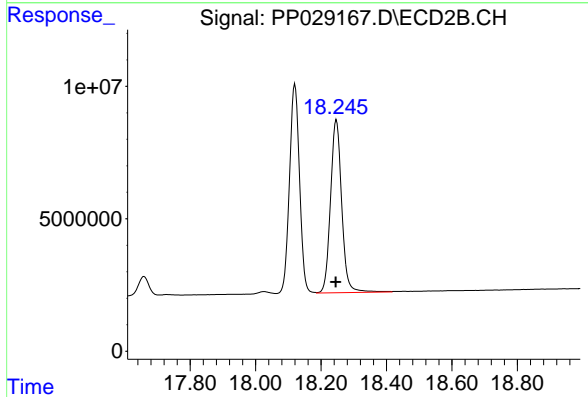
#14 DINOSEB
 R.T.: 16.851 min
 Delta R.T.: 0.002 min
 Response: 93672732
 Conc: 714.67 ng/ml



#15 Picloram

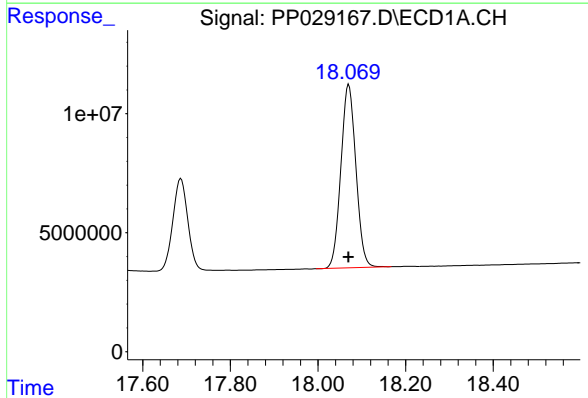
R.T.: 17.477 min
Delta R.T.: 0.002 min
Response: 190178182
Conc: 683.97 ng/ml

Instrument :
ECD_P
ClientSampleId :
HSTDCCC750



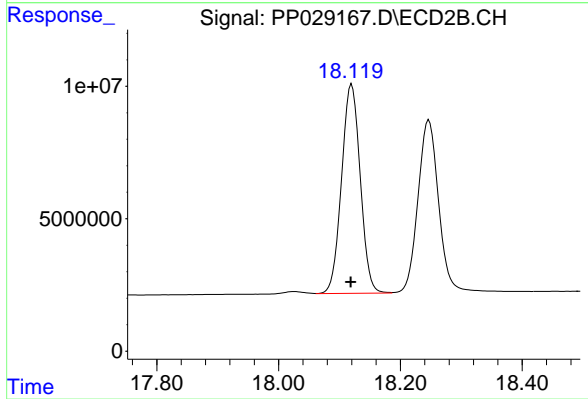
#15 Picloram

R.T.: 18.247 min
Delta R.T.: 0.002 min
Response: 154895284
Conc: 688.35 ng/ml



#16 DCPA

R.T.: 18.071 min
Delta R.T.: 0.002 min
Response: 183844594
Conc: 650.83 ng/ml



#16 DCPA

R.T.: 18.120 min
Delta R.T.: 0.002 min
Response: 168123212
Conc: 723.43 ng/ml