

Data Path : Z:\pestpcbsrv\HPCHEM1\ECD_P\Data\PP022119\
 Data File : PP029170.D
 Signal(s) : Signal #1: ECD1A.CH Signal #2: ECD2B.CH
 Acq On : 21 Feb 2019 17:36
 Operator : EI\MA
 Sample : HSTDICC750
 Misc : hexane
 ALS Vial : 6 Sample Multiplier: 1

Instrument :
 ECD_P
 ClientSampleId :
 HSTDICC750

Integration File signal 1: autoint1.e
 Integration File signal 2: autoint2.e
 Quant Time: Feb 22 02:12:30 2019
 Quant Method : Z:\pestpcbsrv\HPCHEM1\ECD_P\methods\PP022119.M
 Quant Title : 8080.M
 QLast Update : Fri Feb 22 02:10:38 2019
 Response via : Initial Calibration
 Integrator: ChemStation 6890 Scale Mode: Large solvent peaks clipped

Volume Inj. : 2 µl
 Signal #1 Phase : ZB-CLPesticides-1 Signal #2 Phase: ZB-CLPesticides-2
 Signal #1 Info : 30M x 0.32mm x0.5 Signal #2 Info : 30M x 0.32mm x 0.25µm

	Compound	RT#1	RT#2	Resp#1	Resp#2	ng/ml	ng/ml

System Monitoring Compounds							
4) S	2,4-DCAA	11.941	12.129	22966218	27471250	750.000	750.000
Target Compounds							
1) T	Dalapon	3.247	2.959	39663927	34678722	682.500	682.500
2) T	3,5-DICHL...	10.349	10.216	42580252	34072174	697.500	697.500
3) T	4-Nitroph...	11.504	11.274	46408308	16657328	682.500	682.500
5) T	DICAMBA	12.262	12.440	92584802	86771842	705.000	705.000
8) T	DICHLORPROP	13.452	13.552	22131968	23026255	705.000	705.000
9) T	2,4-D	13.801	14.039	28131214	30925315	705.000	705.000
10) T	Pentachlo...	14.217	14.646	463.2E6	353.9E6	712.500	712.500
11) T	2,4,5-TP ...	15.077	15.217	168.4E6	139.9E6	712.500	712.500
12) T	2,4,5-T	15.465	15.866	150.5E6	116.9E6	712.500	712.500
13) T	2,4-DB	16.224	16.461	13659208	15993239	712.500	712.500
14) T	DINOSEB	17.686	16.851	103.8E6	92011113	705.000	705.000
15) T	Picloram	17.476	18.247	201.5E6	164.4E6	712.500	712.500
16) T	DCPA	18.070	18.119	203.5E6	165.7E6	720.000	720.000

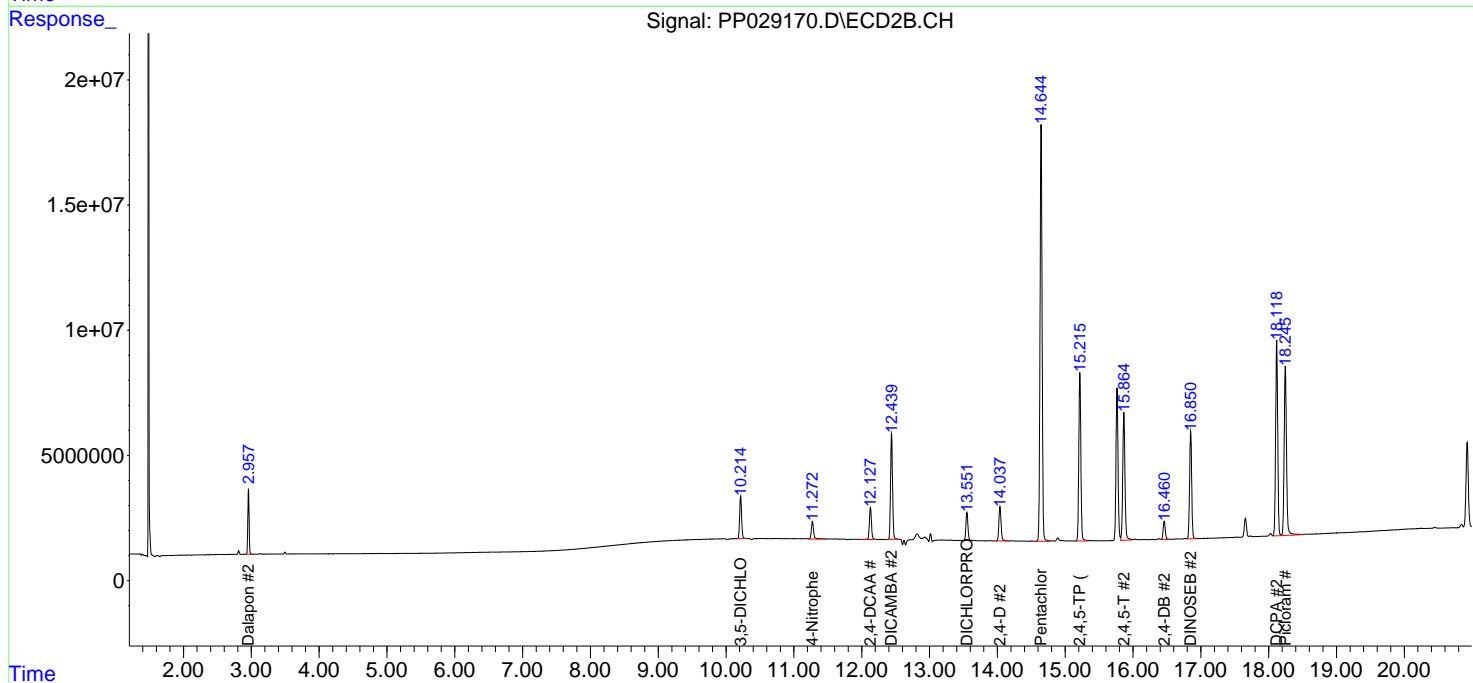
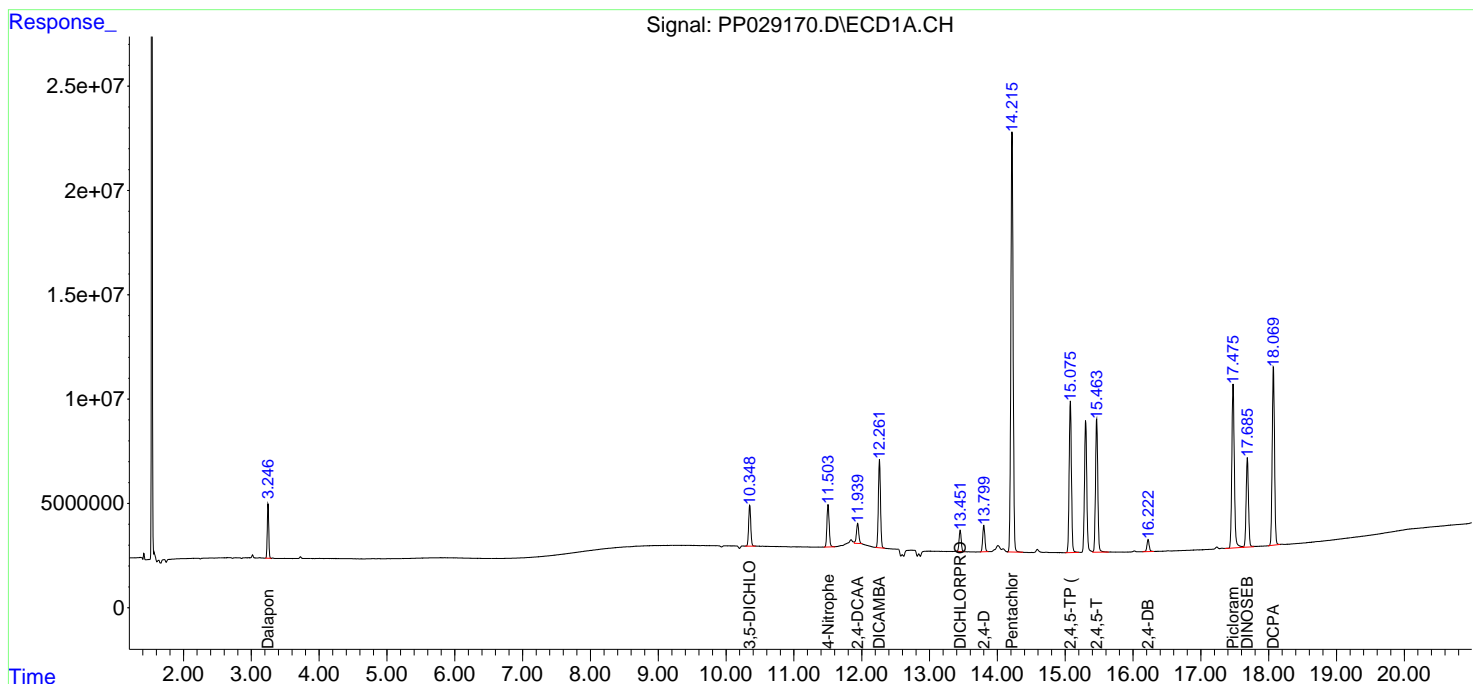
(f)=RT Delta > 1/2 Window (#)=Amounts differ by > 25% (m)=manual int.

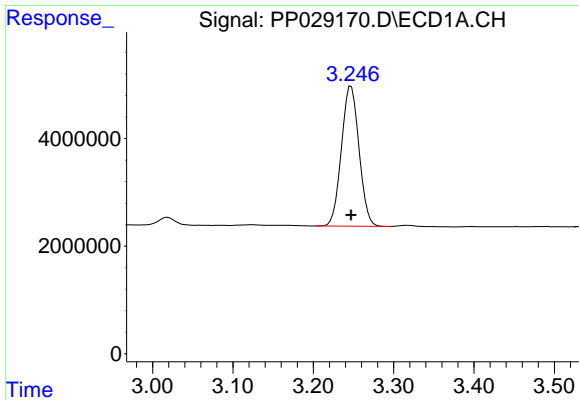
Data Path : Z:\pestpcbsrv\HPCHEM1\ECD_P\Data\PP022119\
 Data File : PP029170.D
 Signal(s) : Signal #1: ECD1A.CH Signal #2: ECD2B.CH
 Acq On : 21 Feb 2019 17:36
 Operator : EI\MA
 Sample : HSTDICC750
 Misc : hexane
 ALS Vial : 6 Sample Multiplier: 1

Instrument :
 ECD_P
 Client Sampled :
 HSTDICC750

Integration File signal 1: autoint1.e
 Integration File signal 2: autoint2.e
 Quant Time: Feb 22 02:12:30 2019
 Quant Method : Z:\pestpcbsrv\HPCHEM1\ECD_P\methods\PP022119.M
 Quant Title : 8080.M
 QLast Update : Fri Feb 22 02:10:38 2019
 Response via : Initial Calibration
 Integrator: ChemStation 6890 Scale Mode: Large solvent peaks clipped

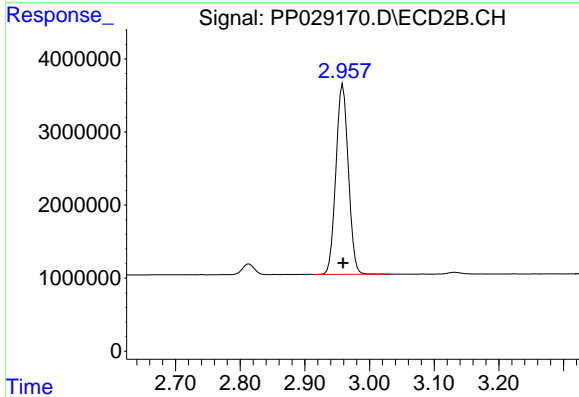
Volume Inj. : 2 µl
 Signal #1 Phase : ZB-CLPesticides-1 Signal #2 Phase: ZB-CLPesticides-2
 Signal #1 Info : 30M x 0.32mm x0.5 Signal #2 Info : 30M x 0.32mm x 0.25µm



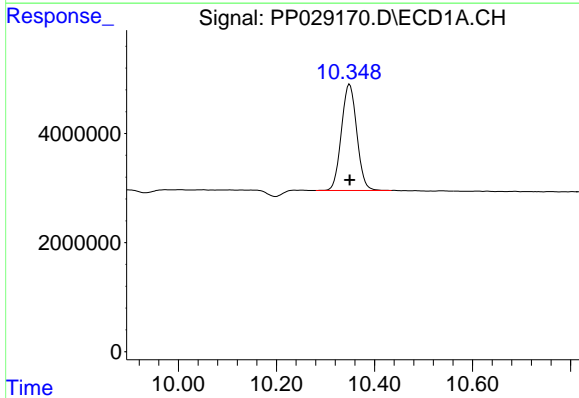


#1 Dalapon
 R.T.: 3.247 min
 Delta R.T.: 0.000 min
 Response: 39663927
 Conc: 682.50 ng/ml

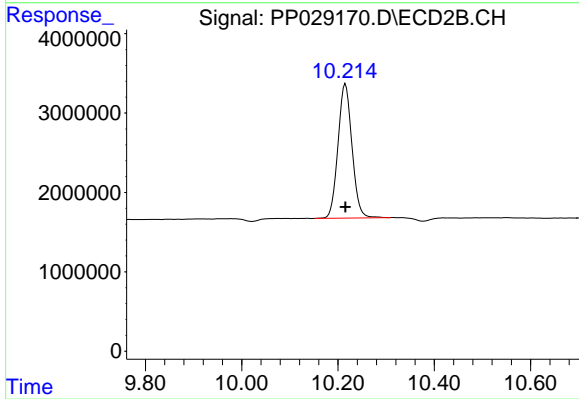
Instrument :
 ECD_P
 ClientSampleId :
 HSTDICC750



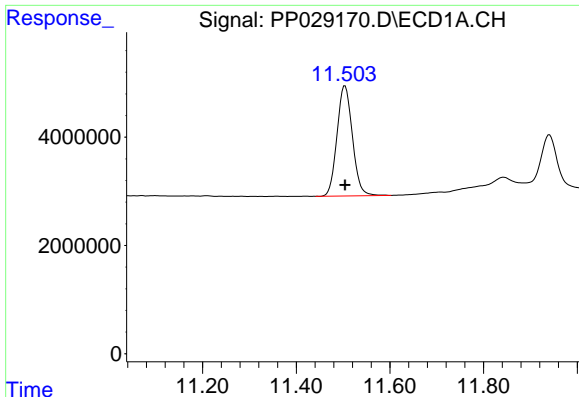
#1 Dalapon
 R.T.: 2.959 min
 Delta R.T.: 0.000 min
 Response: 34678722
 Conc: 682.50 ng/ml



#2 3,5-DICHLOROBENZOIC ACID
 R.T.: 10.349 min
 Delta R.T.: 0.000 min
 Response: 42580252
 Conc: 697.50 ng/ml



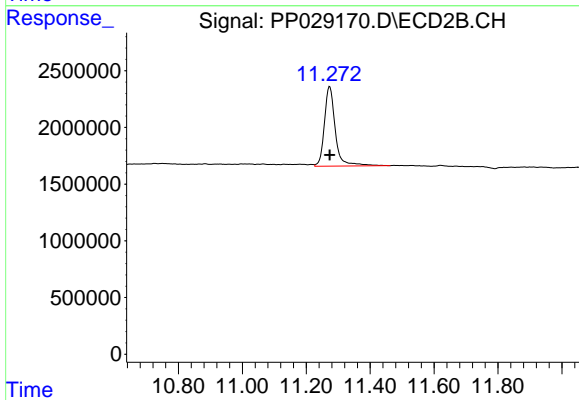
#2 3,5-DICHLOROBENZOIC ACID
 R.T.: 10.216 min
 Delta R.T.: 0.000 min
 Response: 34072174
 Conc: 697.50 ng/ml



#3 4-Nitrophenol

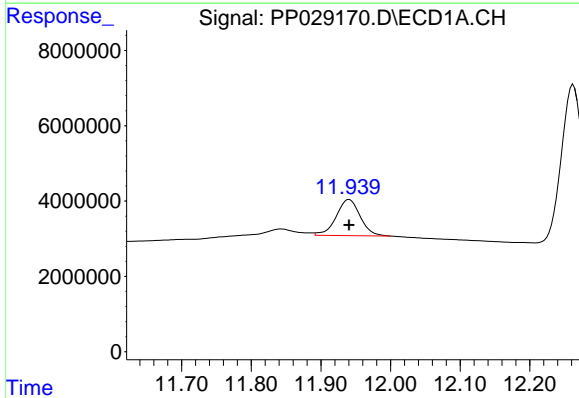
R.T.: 11.504 min
 Delta R.T.: 0.000 min
 Response: 46408308
 Conc: 682.50 ng/ml

Instrument :
 ECD_P
 ClientSampleId :
 HSTDICC750



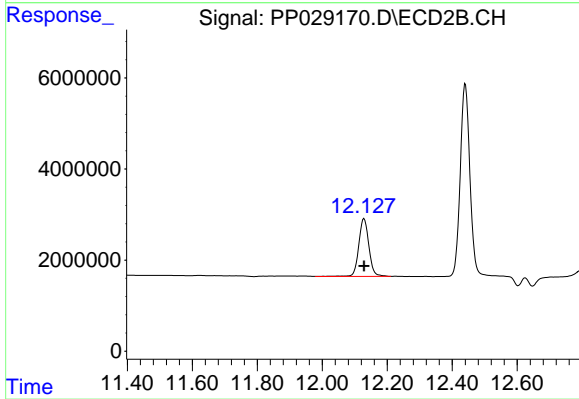
#3 4-Nitrophenol

R.T.: 11.274 min
 Delta R.T.: 0.000 min
 Response: 16657328
 Conc: 682.50 ng/ml



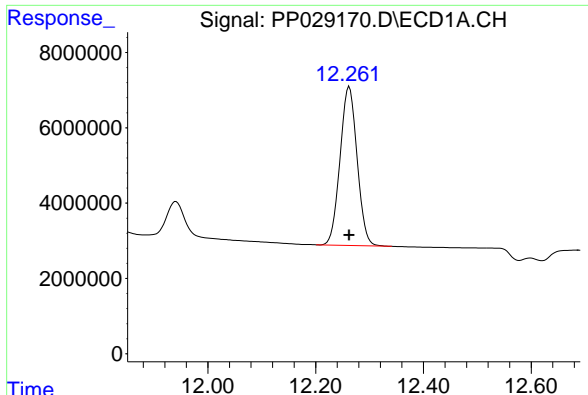
#4 2,4-DCAA

R.T.: 11.941 min
 Delta R.T.: 0.000 min
 Response: 22966218
 Conc: 750.00 ng/ml



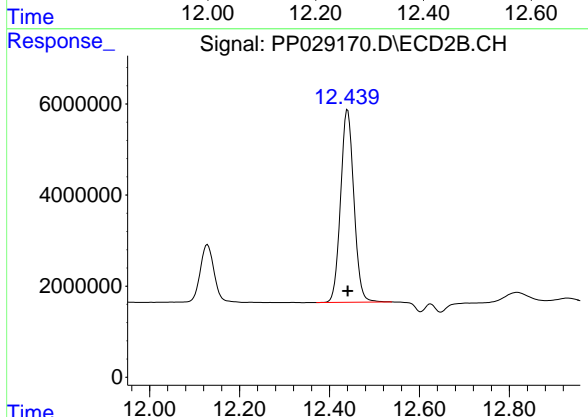
#4 2,4-DCAA

R.T.: 12.129 min
 Delta R.T.: 0.000 min
 Response: 27471250
 Conc: 750.00 ng/ml

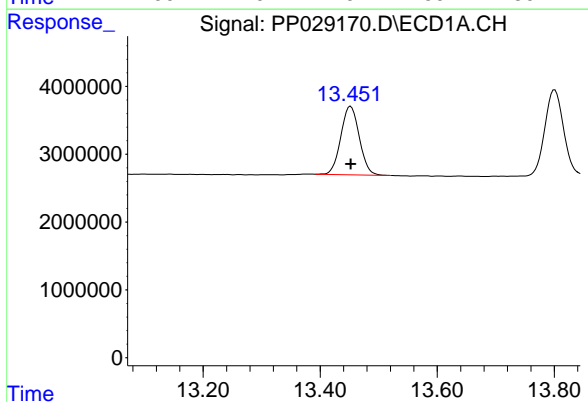


#5 DICAMBA
 R.T.: 12.262 min
 Delta R.T.: 0.000 min
 Response: 92584802
 Conc: 705.00 ng/ml

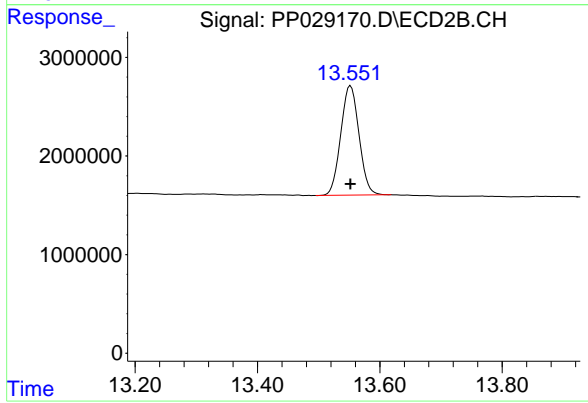
Instrument :
 ECD_P
 ClientSampleId :
 HSTDICC750



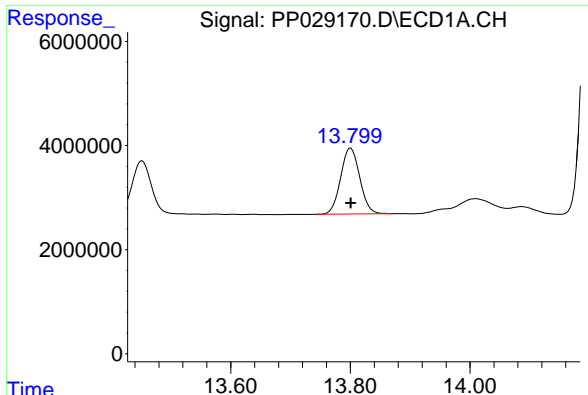
#5 DICAMBA
 R.T.: 12.440 min
 Delta R.T.: 0.000 min
 Response: 86771842
 Conc: 705.00 ng/ml



#8 DICHLORPROP
 R.T.: 13.452 min
 Delta R.T.: 0.000 min
 Response: 22131968
 Conc: 705.00 ng/ml



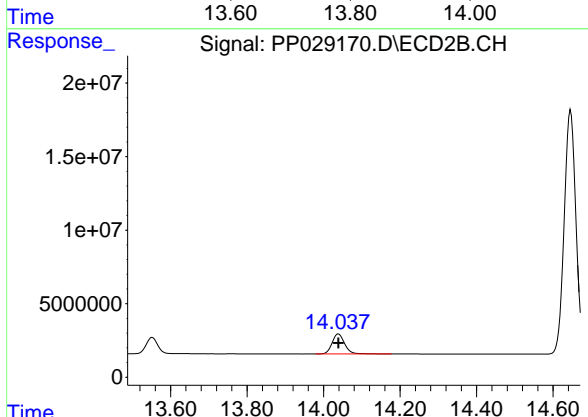
#8 DICHLORPROP
 R.T.: 13.552 min
 Delta R.T.: 0.000 min
 Response: 23026255
 Conc: 705.00 ng/ml



#9 2,4-D

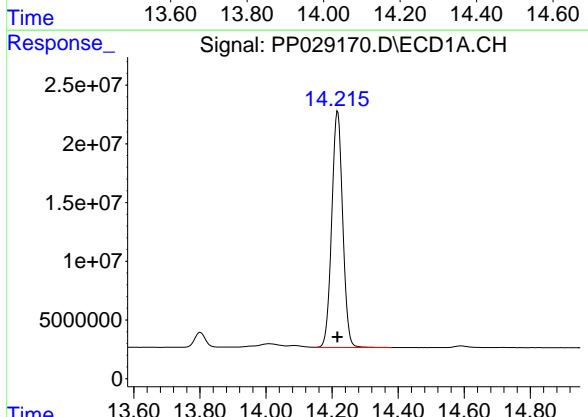
R.T.: 13.801 min
 Delta R.T.: 0.000 min
 Response: 28131214
 Conc: 705.00 ng/ml

Instrument :
 ECD_P
 ClientSampleId :
 HSTDICC750



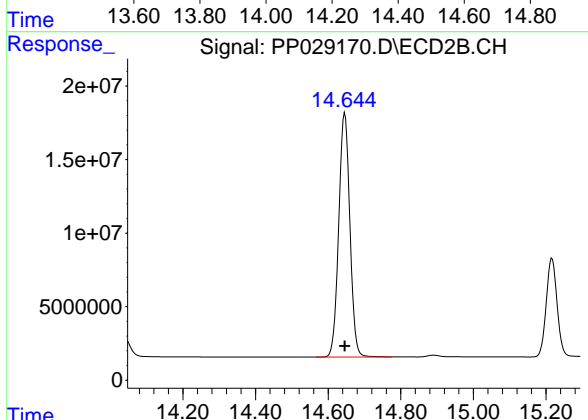
#9 2,4-D

R.T.: 14.039 min
 Delta R.T.: 0.000 min
 Response: 30925315
 Conc: 705.00 ng/ml



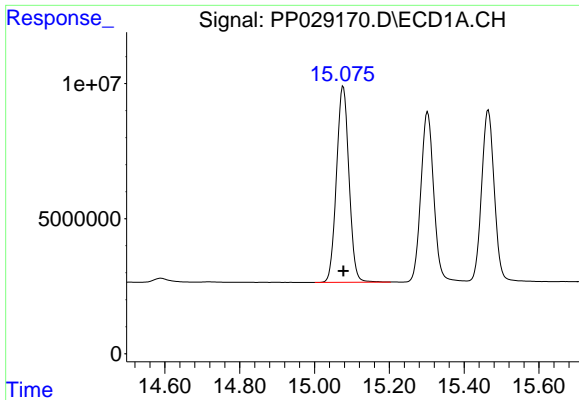
#10 Pentachlorophenol

R.T.: 14.217 min
 Delta R.T.: 0.000 min
 Response: 463185750
 Conc: 712.50 ng/ml



#10 Pentachlorophenol

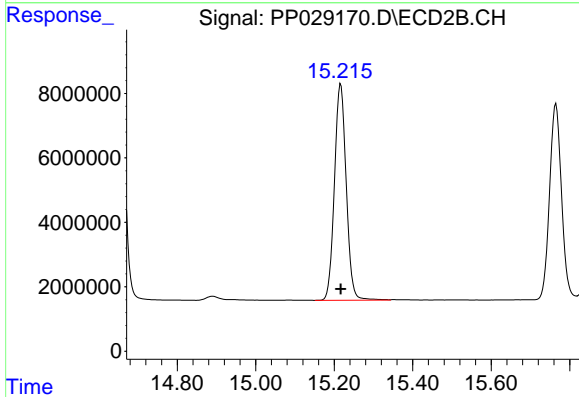
R.T.: 14.646 min
 Delta R.T.: 0.000 min
 Response: 353868191
 Conc: 712.50 ng/ml



#11 2,4,5-TP (SILVEX)

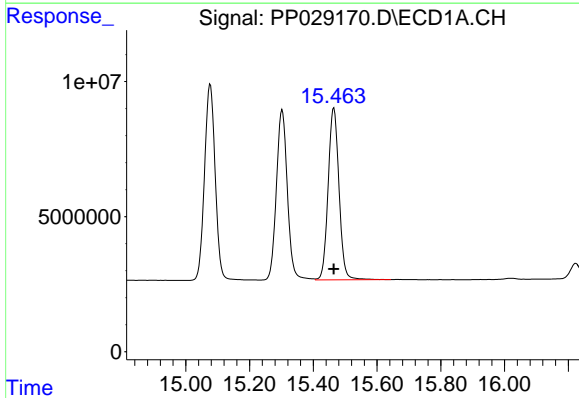
R.T.: 15.077 min
 Delta R.T.: 0.000 min
 Response: 168402702
 Conc: 712.50 ng/ml

Instrument :
 ECD_P
 ClientSampleId :
 HSTDICC750



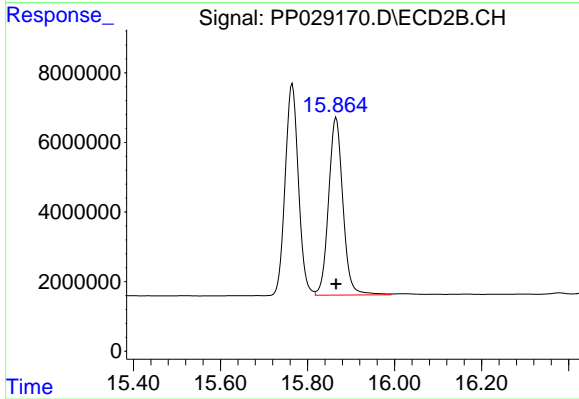
#11 2,4,5-TP (SILVEX)

R.T.: 15.217 min
 Delta R.T.: 0.000 min
 Response: 139938705
 Conc: 712.50 ng/ml



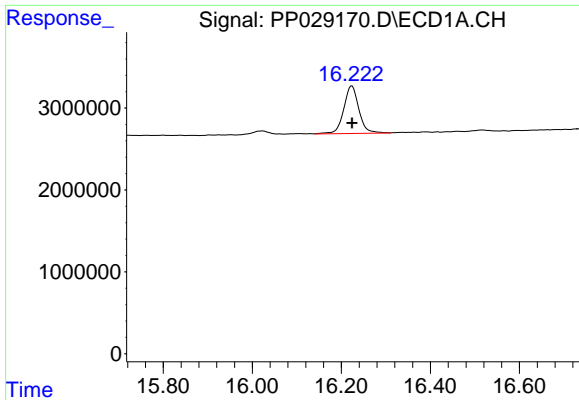
#12 2,4,5-T

R.T.: 15.465 min
 Delta R.T.: 0.000 min
 Response: 150535905
 Conc: 712.50 ng/ml



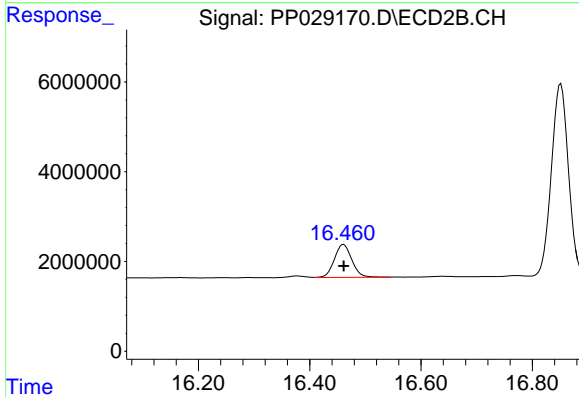
#12 2,4,5-T

R.T.: 15.866 min
 Delta R.T.: 0.000 min
 Response: 116946974
 Conc: 712.50 ng/ml

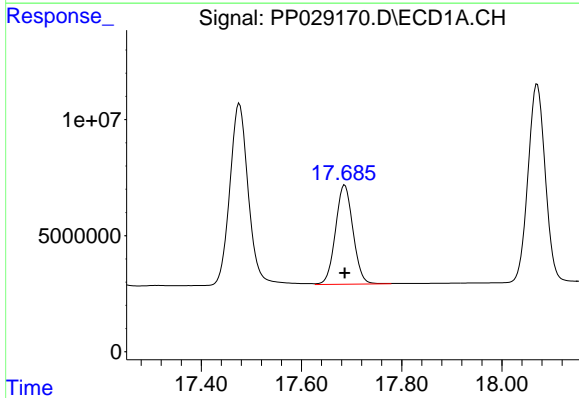


#13 2,4-DB
 R.T.: 16.224 min
 Delta R.T.: 0.000 min
 Response: 13659208
 Conc: 712.50 ng/ml

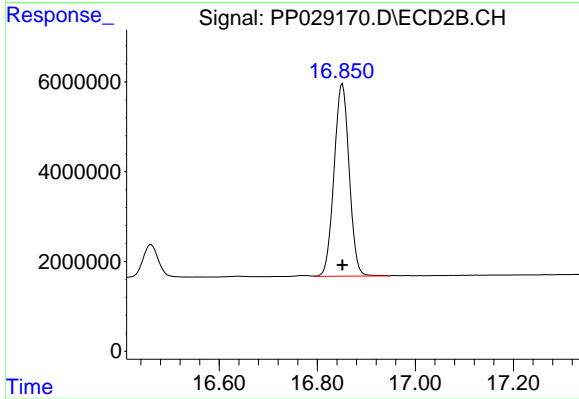
Instrument :
 ECD_P
ClientSampled :
 HSTDICC750



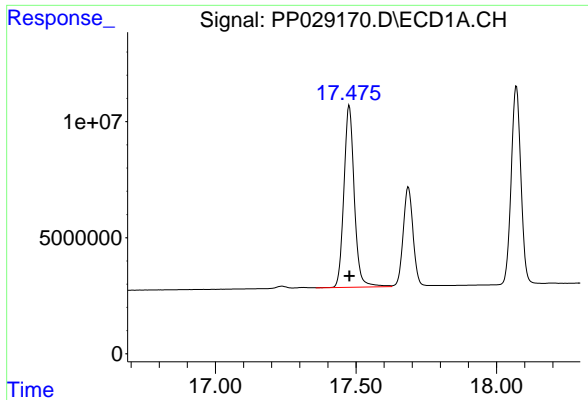
#13 2,4-DB
 R.T.: 16.461 min
 Delta R.T.: 0.000 min
 Response: 15993239
 Conc: 712.50 ng/ml



#14 DINOSEB
 R.T.: 17.686 min
 Delta R.T.: 0.000 min
 Response: 103808633
 Conc: 705.00 ng/ml

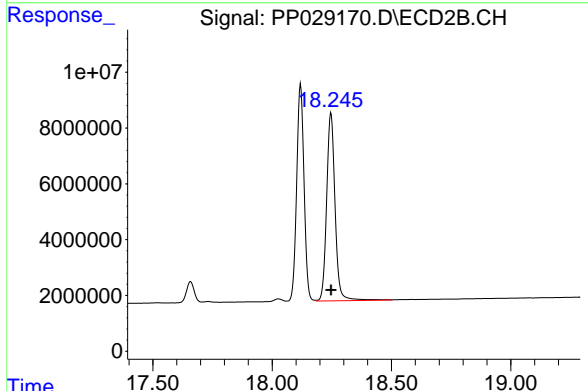


#14 DINOSEB
 R.T.: 16.851 min
 Delta R.T.: 0.000 min
 Response: 92011113
 Conc: 705.00 ng/ml

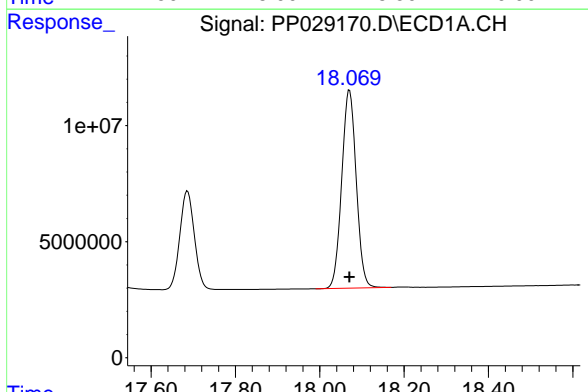


#15 Picloram
 R.T.: 17.476 min
 Delta R.T.: 0.000 min
 Response: 201542039
 Conc: 712.50 ng/ml

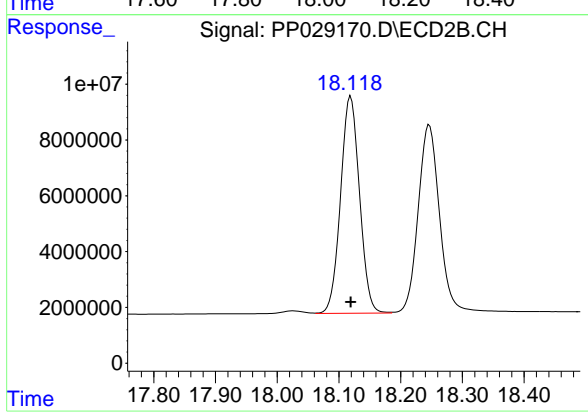
Instrument :
 ECD_P
 ClientSampleId :
 HSTDICC750



#15 Picloram
 R.T.: 18.247 min
 Delta R.T.: 0.000 min
 Response: 164412940
 Conc: 712.50 ng/ml



#16 DCPA
 R.T.: 18.070 min
 Delta R.T.: 0.000 min
 Response: 203523875
 Conc: 720.00 ng/ml



#16 DCPA
 R.T.: 18.119 min
 Delta R.T.: 0.000 min
 Response: 165716903
 Conc: 720.00 ng/ml