

Data Path : Z:\pestpcbsrv\HPCHEM1\ECD_P\Data\PP022222\
 Data File : PP043918.D
 Signal(s) : Signal #1: ECD1A.ch Signal #2: ECD2B.ch
 Acq On : 22 Feb 2022 13:28
 Operator : YP\AJ
 Sample : AR1660CCC500
 Misc :
 ALS Vial : 3 Sample Multiplier: 1

Instrument :
 ECD_P
 ClientSampleId :
 AR1660CCC500

Integration File signal 1: autoint1.e
 Integration File signal 2: autoint2.e
 Quant Time: Feb 23 00:31:51 2022
 Quant Method : Z:\pestpcbsrv\HPCHEM1\ECD_P\methods\PP021022.M
 Quant Title : GC EXTRACTABLES
 QLast Update : Fri Feb 11 04:48:05 2022
 Response via : Initial Calibration
 Integrator: ChemStation

Volume Inj. : 2 µl
 Signal #1 Phase : ZB-MR1 Signal #2 Phase: ZB-MR2
 Signal #1 Info : 30Mx0.32mmx 0.50µ Signal #2 Info : 30M x 0.32mm x 0.25µm

Compound	RT#1	RT#2	Resp#1	Resp#2	ng/ml	ng/ml

System Monitoring Compounds						
1) SA Tetrachlo...	3.917	3.172	106.0E6	92493582	47.946	49.244
2) SA Decachlor...	10.058	8.543	60348045	74897227	50.803	46.165
Target Compounds						
3) L1 AR-1016-1	5.170	4.317	32506954	29181286	447.987	476.279
4) L1 AR-1016-2	5.193	4.336	47292937	41326996	448.399	489.141
5) L1 AR-1016-3	5.259	4.521	29154108	23242362	442.768	497.515
6) L1 AR-1016-4	5.364	4.570	24373513	18762540	449.445	502.062
7) L1 AR-1016-5	5.685	4.795	23767107	21062053	452.466	461.052
31) L7 AR-1260-1	6.915	5.905	38866560	40655800	464.122	508.389
32) L7 AR-1260-2	7.199	6.112	41325491	48956083	456.531	501.327
33) L7 AR-1260-3	7.594	6.275	32401656	45272057	446.990	495.908
34) L7 AR-1260-4	7.841	6.788	38077645	39432516	443.504	487.362
35) L7 AR-1260-5	8.184	7.055	69670318	89569264	449.465	484.512

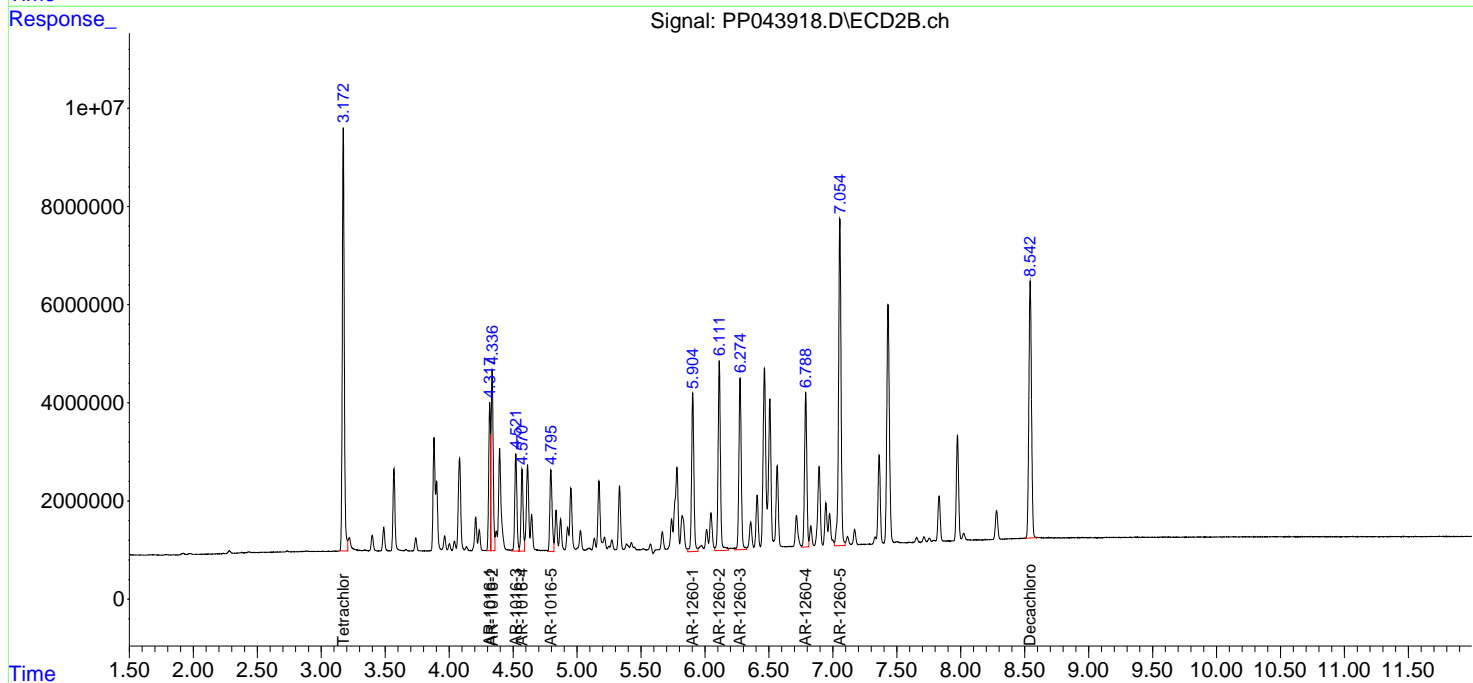
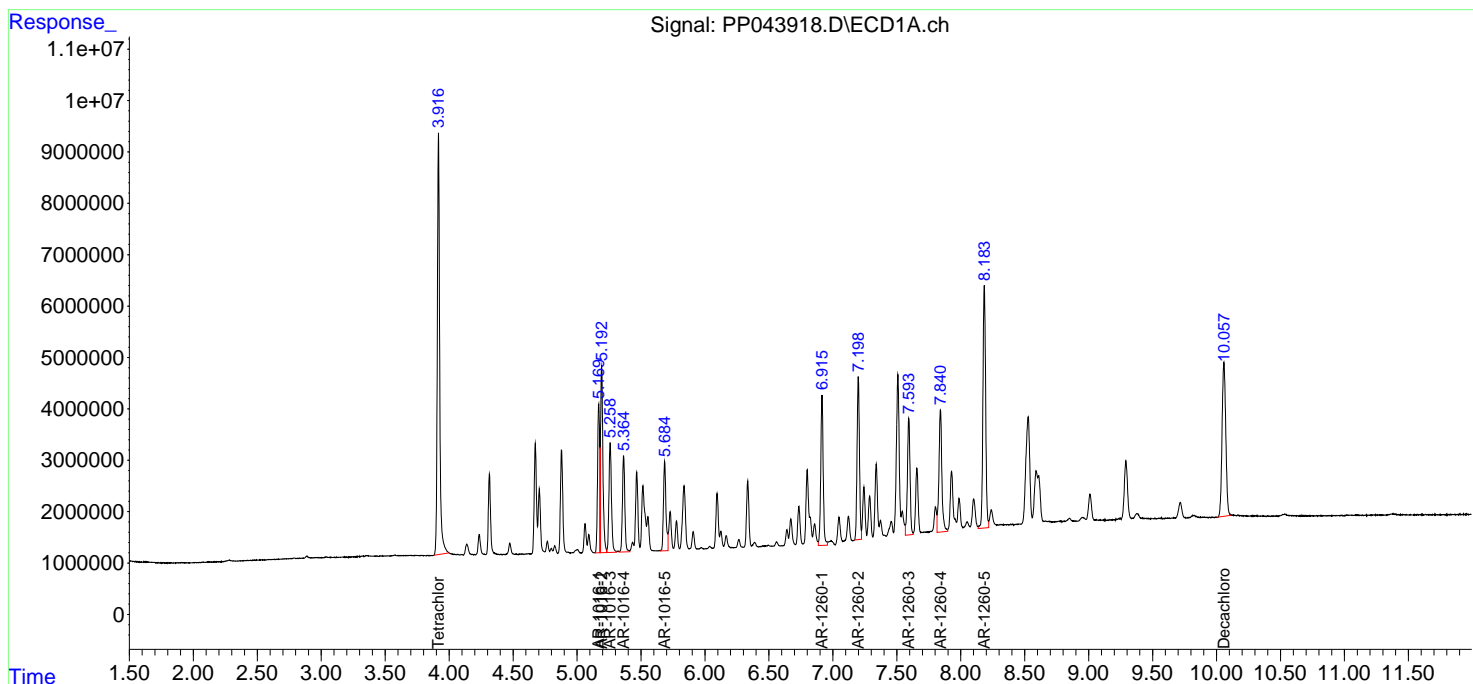
(f)=RT Delta > 1/2 Window (#)=Amounts differ by > 25% (m)=manual int.

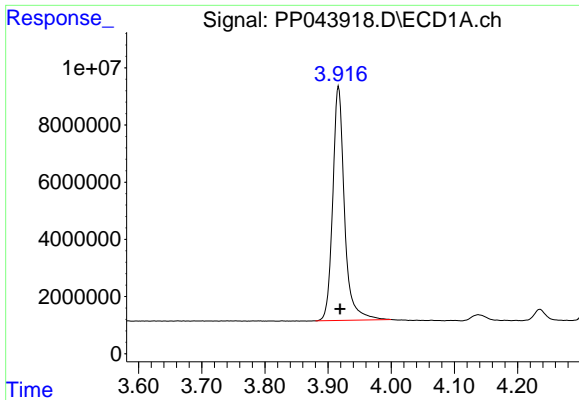
Data Path : Z:\pestpcbsrv\HPCHEM1\ECD_P\Data\PP022222\
 Data File : PP043918.D
 Signal(s) : Signal #1: ECD1A.ch Signal #2: ECD2B.ch
 Acq On : 22 Feb 2022 13:28
 Operator : YP\AJ
 Sample : AR1660CCC500
 Misc :
 ALS Vial : 3 Sample Multiplier: 1

Instrument :
 ECD_P
 ClientSampleId :
 AR1660CCC500

Integration File signal 1: autoint1.e
 Integration File signal 2: autoint2.e
 Quant Time: Feb 23 00:31:51 2022
 Quant Method : Z:\pestpcbsrv\HPCHEM1\ECD_P\methods\PP021022.M
 Quant Title : GC EXTRACTABLES
 QLast Update : Fri Feb 11 04:48:05 2022
 Response via : Initial Calibration
 Integrator: ChemStation

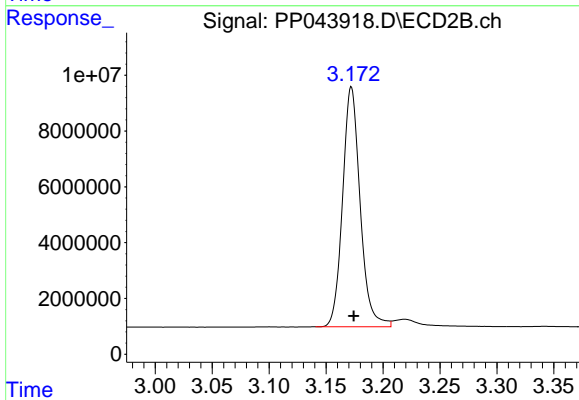
Volume Inj. : 2 µl
 Signal #1 Phase : ZB-MR1 Signal #2 Phase: ZB-MR2
 Signal #1 Info : 30Mx0.32mmx 0.50µ Signal #2 Info : 30M x 0.32mm x 0.25µm



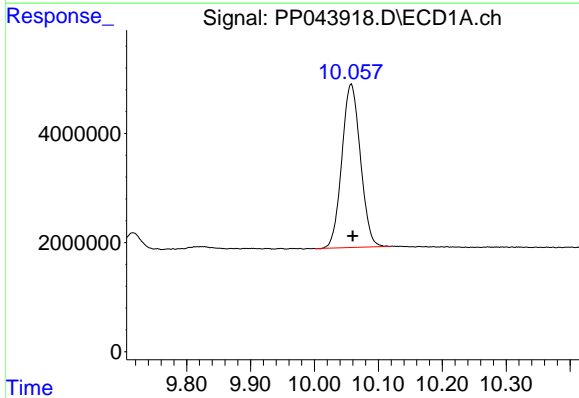


#1 Tetrachloro-m-xylene
 R.T.: 3.917 min
 Delta R.T.: -0.002 min
 Response: 106010110
 Conc: 47.95 ng/ml

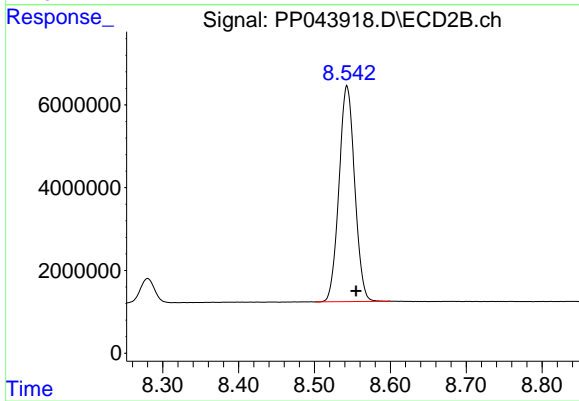
Instrument :
 ECD_P
 ClientSampleId :
 AR1660CCC500



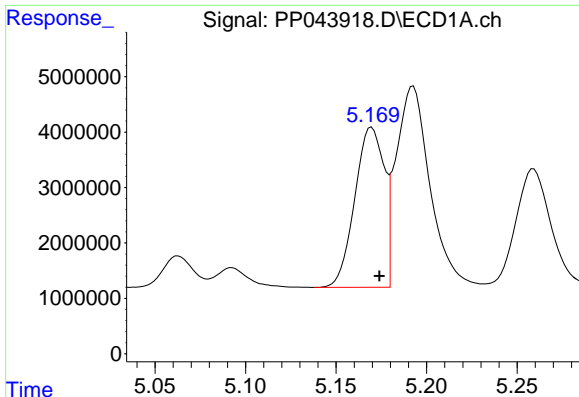
#1 Tetrachloro-m-xylene
 R.T.: 3.172 min
 Delta R.T.: -0.002 min
 Response: 92493582
 Conc: 49.24 ng/ml



#2 Decachlorobiphenyl
 R.T.: 10.058 min
 Delta R.T.: -0.002 min
 Response: 60348045
 Conc: 50.80 ng/ml



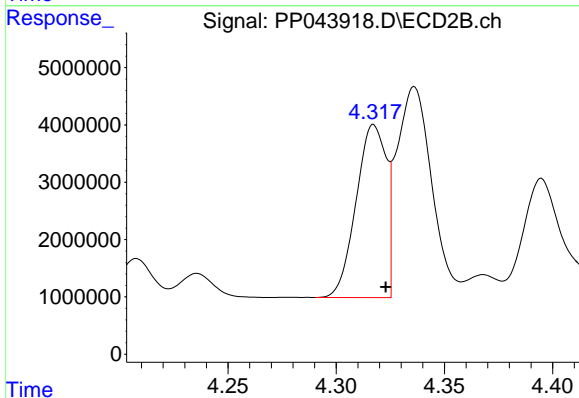
#2 Decachlorobiphenyl
 R.T.: 8.543 min
 Delta R.T.: -0.012 min
 Response: 74897227
 Conc: 46.16 ng/ml



#3 AR-1016-1

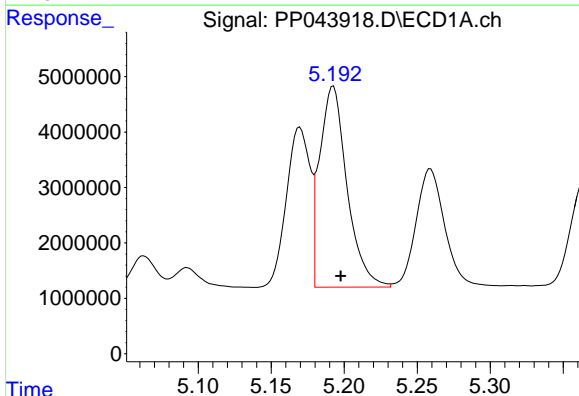
R.T.: 5.170 min
 Delta R.T.: -0.004 min
 Response: 32506954
 Conc: 447.99 ng/ml

Instrument :
 ECD_P
 ClientSampleId :
 AR1660CCC500



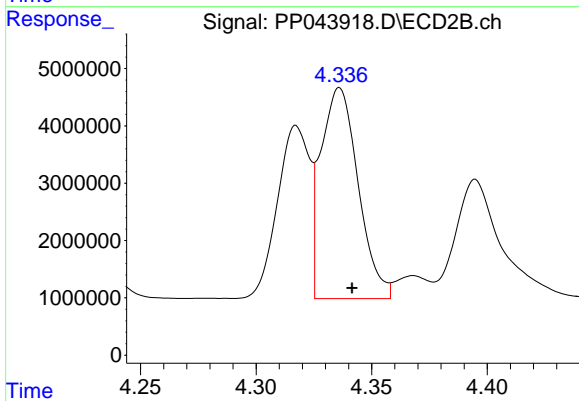
#3 AR-1016-1

R.T.: 4.317 min
 Delta R.T.: -0.006 min
 Response: 29181286
 Conc: 476.28 ng/ml



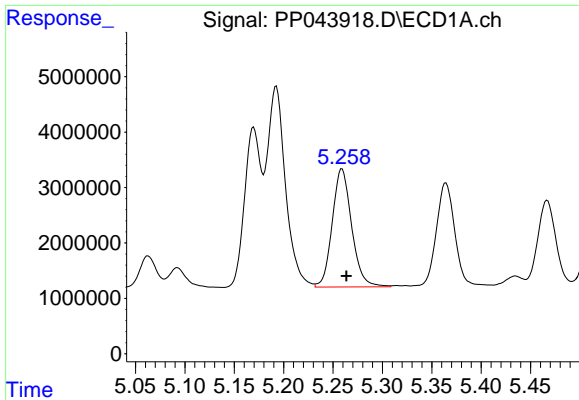
#4 AR-1016-2

R.T.: 5.193 min
 Delta R.T.: -0.005 min
 Response: 47292937
 Conc: 448.40 ng/ml



#4 AR-1016-2

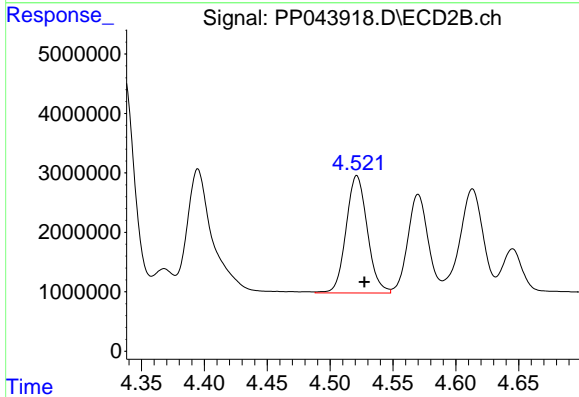
R.T.: 4.336 min
 Delta R.T.: -0.005 min
 Response: 41326996
 Conc: 489.14 ng/ml



#5 AR-1016-3

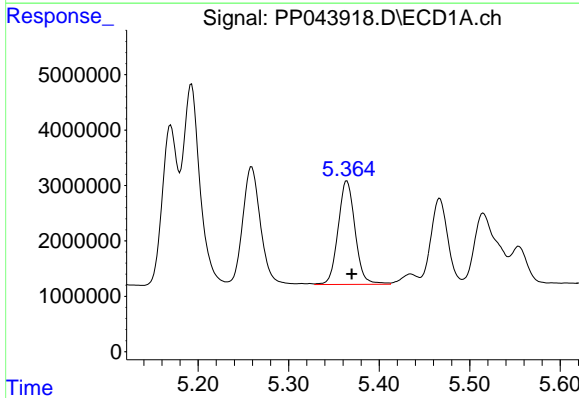
R.T.: 5.259 min
 Delta R.T.: -0.004 min
 Response: 29154108
 Conc: 442.77 ng/ml

Instrument :
 ECD_P
 ClientSampleId :
 AR1660CCC500



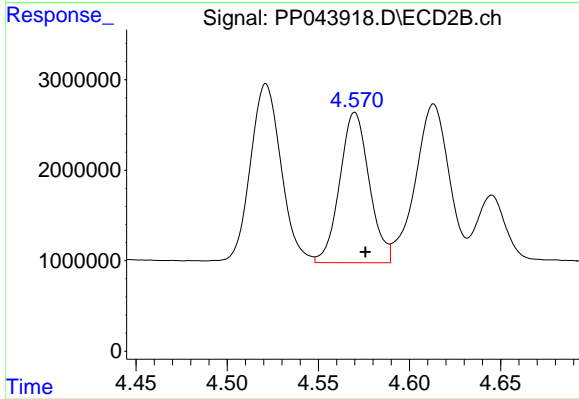
#5 AR-1016-3

R.T.: 4.521 min
 Delta R.T.: -0.006 min
 Response: 23242362
 Conc: 497.51 ng/ml



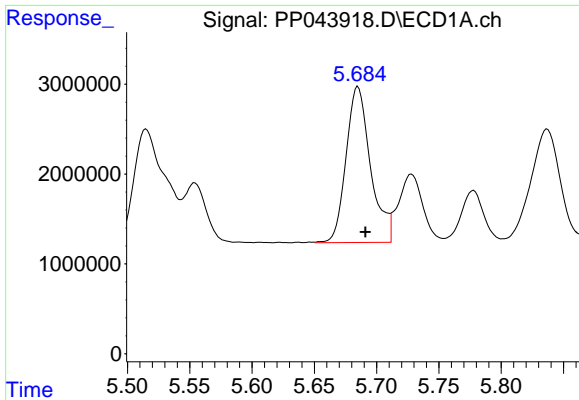
#6 AR-1016-4

R.T.: 5.364 min
 Delta R.T.: -0.005 min
 Response: 24373513
 Conc: 449.44 ng/ml



#6 AR-1016-4

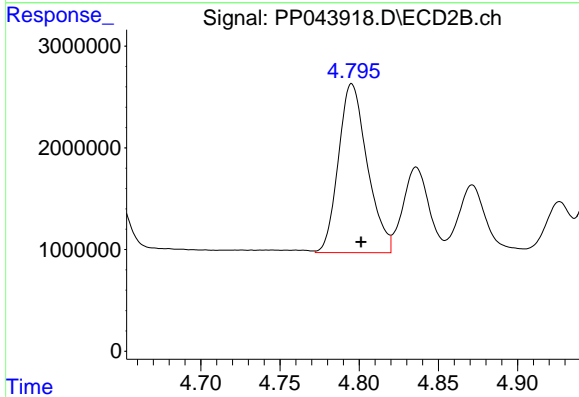
R.T.: 4.570 min
 Delta R.T.: -0.006 min
 Response: 18762540
 Conc: 502.06 ng/ml



#7 AR-1016-5

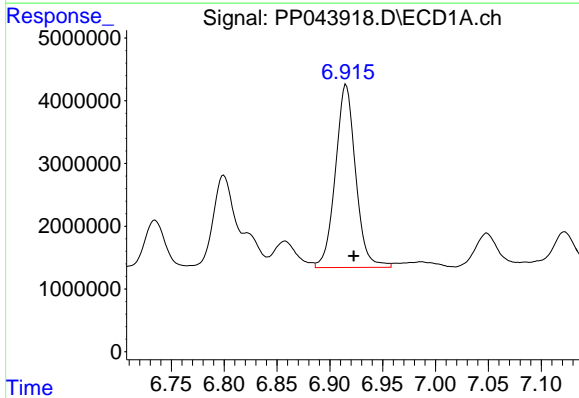
R.T.: 5.685 min
 Delta R.T.: -0.006 min
 Response: 23767107
 Conc: 452.47 ng/ml

Instrument :
 ECD_P
 ClientSampleId :
 AR1660CCC500



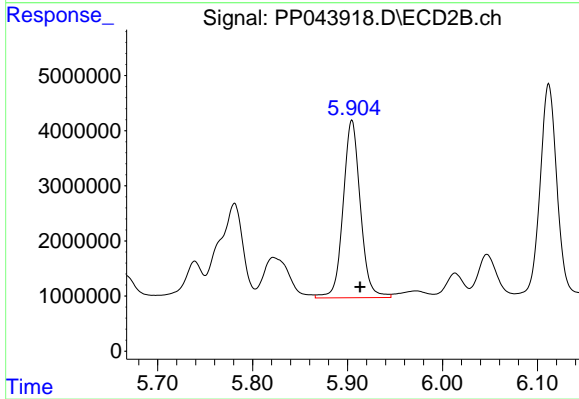
#7 AR-1016-5

R.T.: 4.795 min
 Delta R.T.: -0.006 min
 Response: 21062053
 Conc: 461.05 ng/ml



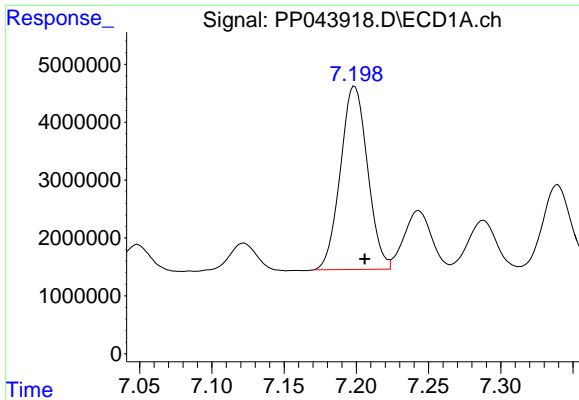
#31 AR-1260-1

R.T.: 6.915 min
 Delta R.T.: -0.007 min
 Response: 38866560
 Conc: 464.12 ng/ml



#31 AR-1260-1

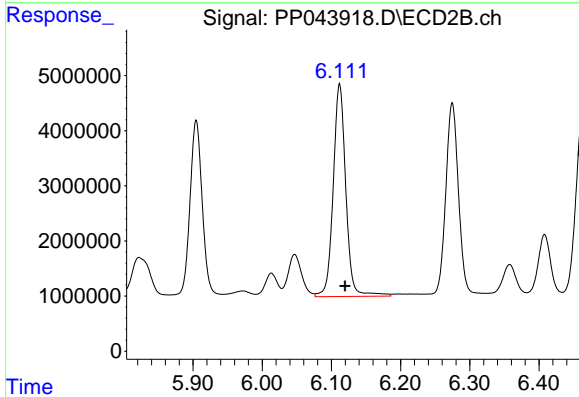
R.T.: 5.905 min
 Delta R.T.: -0.008 min
 Response: 40655800
 Conc: 508.39 ng/ml



#32 AR-1260-2

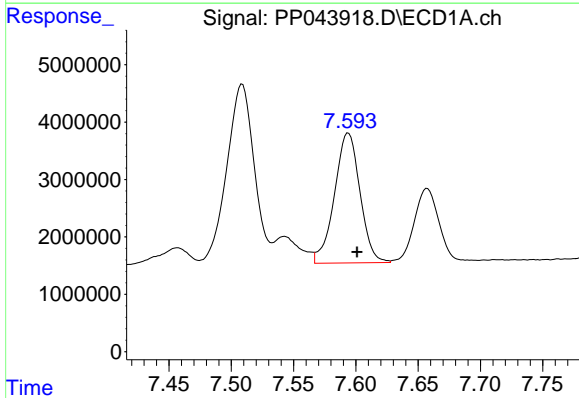
R.T.: 7.199 min
 Delta R.T.: -0.007 min
 Response: 41325491
 Conc: 456.53 ng/ml

Instrument :
 ECD_P
 ClientSampleId :
 AR1660CCC500



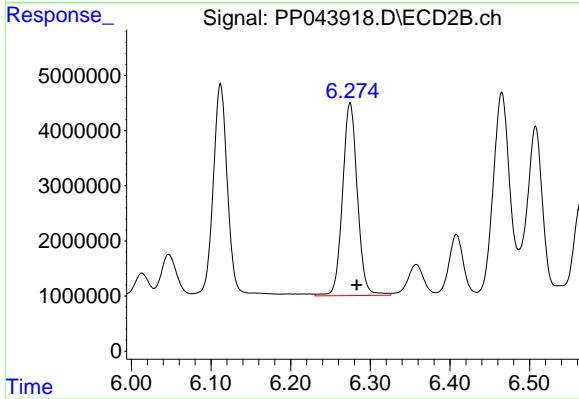
#32 AR-1260-2

R.T.: 6.112 min
 Delta R.T.: -0.008 min
 Response: 48956083
 Conc: 501.33 ng/ml



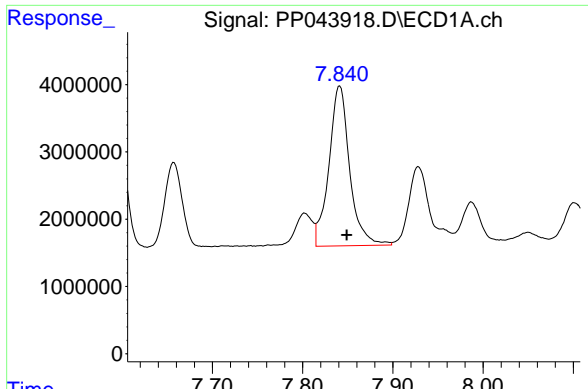
#33 AR-1260-3

R.T.: 7.594 min
 Delta R.T.: -0.007 min
 Response: 32401656
 Conc: 446.99 ng/ml



#33 AR-1260-3

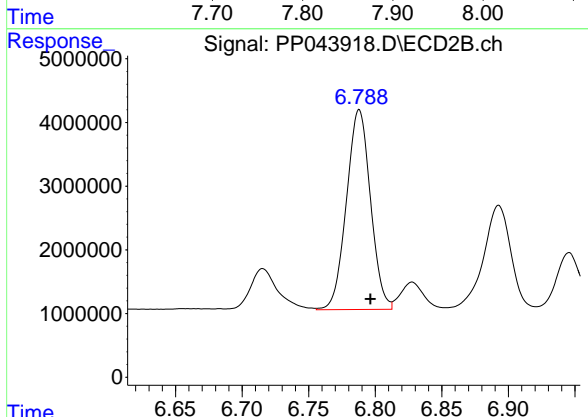
R.T.: 6.275 min
 Delta R.T.: -0.008 min
 Response: 45272057
 Conc: 495.91 ng/ml



#34 AR-1260-4

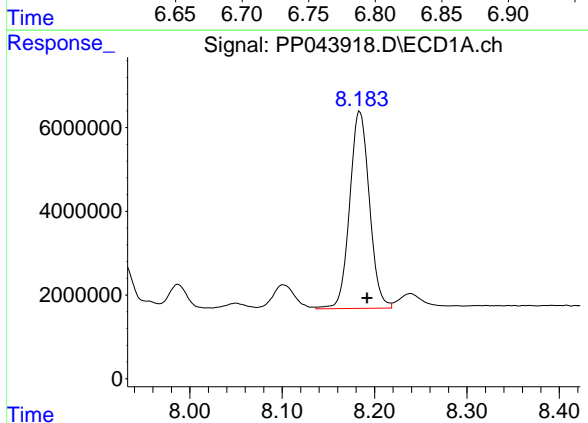
R.T.: 7.841 min
 Delta R.T.: -0.008 min
 Response: 38077645
 Conc: 443.50 ng/ml

Instrument :
 ECD_P
 ClientSampleId :
 AR1660CCC500



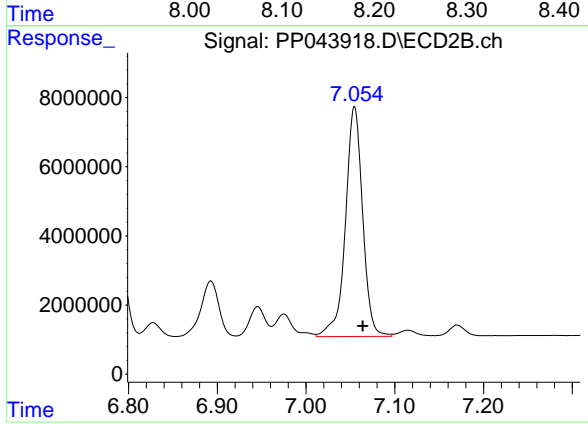
#34 AR-1260-4

R.T.: 6.788 min
 Delta R.T.: -0.008 min
 Response: 39432516
 Conc: 487.36 ng/ml



#35 AR-1260-5

R.T.: 8.184 min
 Delta R.T.: -0.008 min
 Response: 69670318
 Conc: 449.46 ng/ml



#35 AR-1260-5

R.T.: 7.055 min
 Delta R.T.: -0.009 min
 Response: 89569264
 Conc: 484.51 ng/ml