

Data Path : Z:\pestpcbsrv\HPCHEM1\ECD_P\Data\PP022222\
 Data File : PP043921.D
 Signal(s) : Signal #1: ECD1A.ch Signal #2: ECD2B.ch
 Acq On : 22 Feb 2022 14:13
 Operator : YP\AJ
 Sample : N1626-01
 Misc :
 ALS Vial : 15 Sample Multiplier: 1

Instrument :
 ECD_P
ClientSampleId :
 CC-A1

Manual Integrations
APPROVED
 Reviewed By :Yogesh Patel 02/23/2022
 Supervised By :Ankita Jodhani 02/23/2022

Integration File signal 1: autoint1.e
 Integration File signal 2: autoint2.e
 Quant Time: Feb 23 02:00:06 2022
 Quant Method : Z:\pestpcbsrv\HPCHEM1\ECD_P\methods\PP021022.M
 Quant Title : GC EXTRACTABLES
 QLast Update : Fri Feb 11 04:48:05 2022
 Response via : Initial Calibration
 Integrator: ChemStation

Volume Inj. : 2 µl
 Signal #1 Phase : ZB-MR1 Signal #2 Phase: ZB-MR2
 Signal #1 Info : 30Mx0.32mmx 0.50µ Signal #2 Info : 30M x 0.32mm x 0.25µm

Compound	RT#1	RT#2	Resp#1	Resp#2	ng/ml	ng/ml

System Monitoring Compounds						
1) SA Tetrachlo...	3.915	3.171	38933339	36052681	17.609	19.195m
2) SA Decachlor...	10.056	8.543	25779840	28262401	21.702	17.420m
Target Compounds						
26) L6 AR-1254-1	6.122f	5.172	11403701	10377242	150.929m	118.824m
27) L6 AR-1254-2	6.333	5.332	16075829	9443229	143.318m	123.801m
28) L6 AR-1254-3	6.732	5.764	22521826	17951498	194.636m	146.473m
29) L6 AR-1254-4	7.046	6.014	18203864	16035926	228.023m	203.179m
30) L6 AR-1254-5	7.506	6.465	23382579	30678286	272.642m	265.281m

(f)=RT Delta > 1/2 Window (#)=Amounts differ by > 25% (m)=manual int.

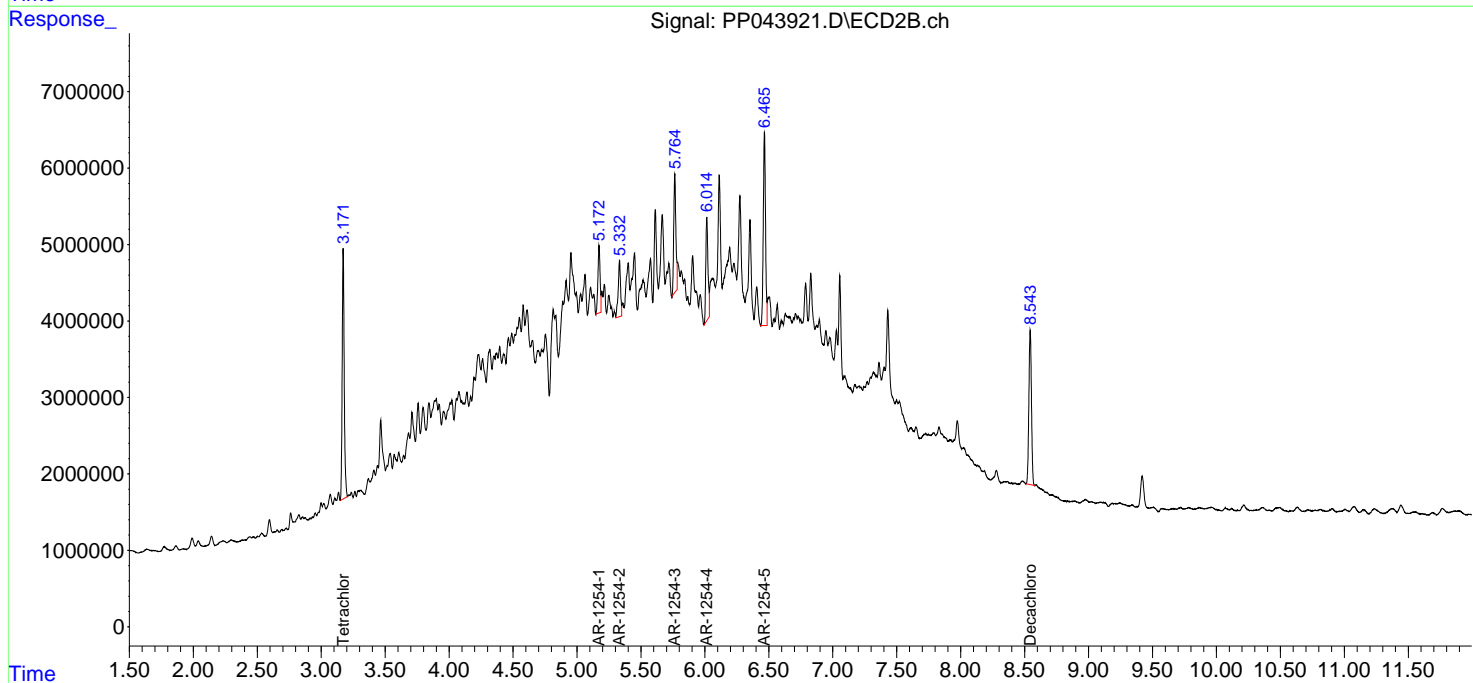
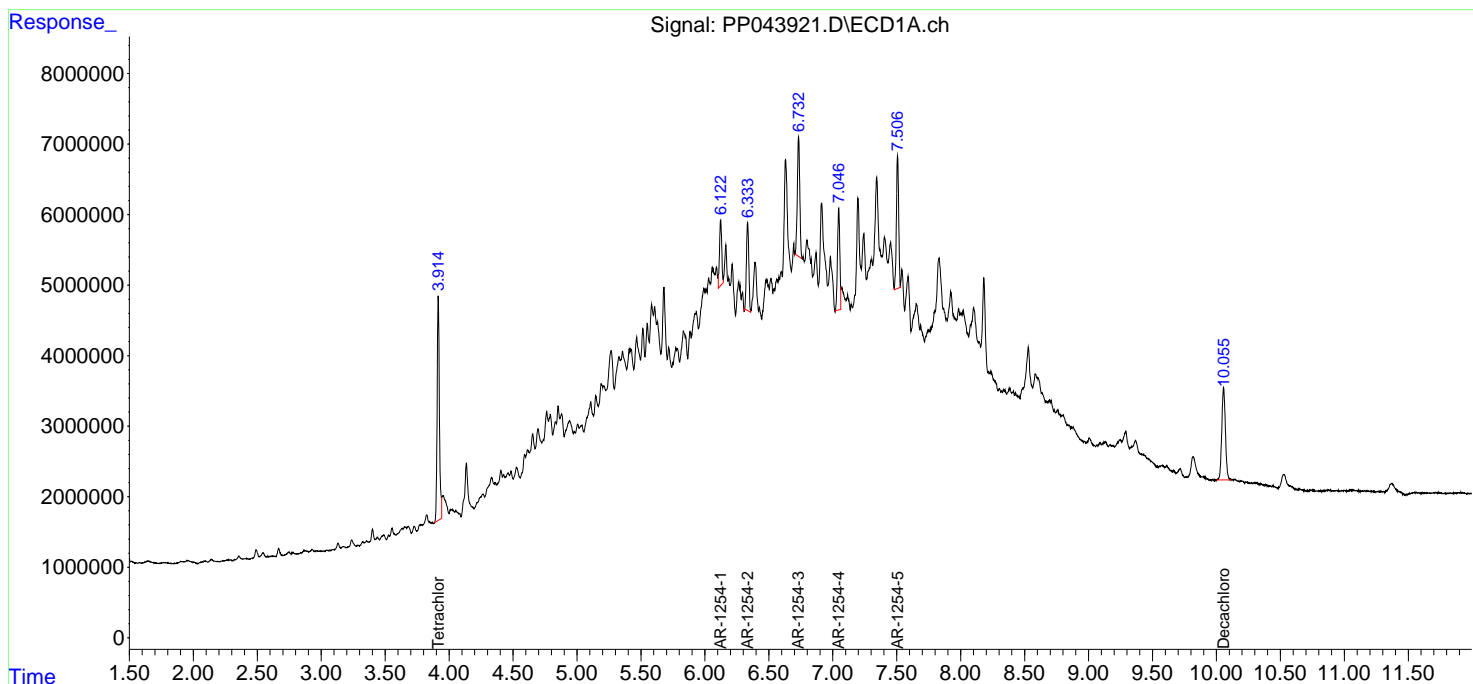
Data Path : Z:\pestpcbsrv\HPCHEM1\ECD_P\Data\PP022222\
 Data File : PP043921.D
 Signal(s) : Signal #1: ECD1A.ch Signal #2: ECD2B.ch
 Acq On : 22 Feb 2022 14:13
 Operator : YP\AJ
 Sample : N1626-01
 Misc :
 ALS Vial : 15 Sample Multiplier: 1

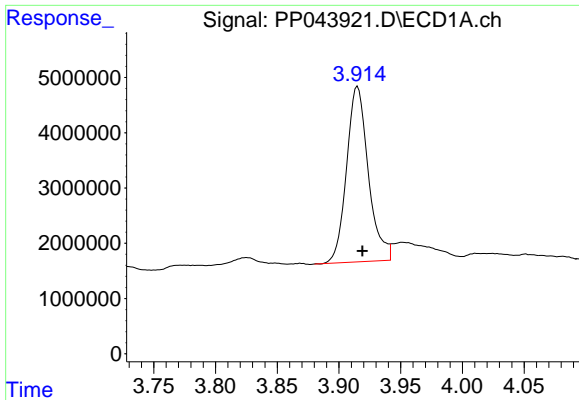
Instrument :
 ECD_P
ClientSampleId :
 CC-A1

Manual Integrations
APPROVED
 Reviewed By :Yogesh Patel 02/23/2022
 Supervised By :Ankita Jodhani 02/23/2022

Integration File signal 1: autoint1.e
 Integration File signal 2: autoint2.e
 Quant Time: Feb 23 02:00:06 2022
 Quant Method : Z:\pestpcbsrv\HPCHEM1\ECD_P\methods\PP021022.M
 Quant Title : GC EXTRACTABLES
 QLast Update : Fri Feb 11 04:48:05 2022
 Response via : Initial Calibration
 Integrator: ChemStation

Volume Inj. : 2 µl
 Signal #1 Phase : ZB-MR1 Signal #2 Phase: ZB-MR2
 Signal #1 Info : 30Mx0.32mmx 0.50µ Signal #2 Info : 30M x 0.32mm x 0.25µm



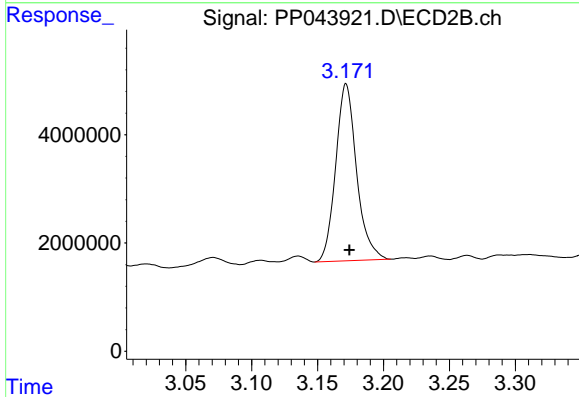


#1 Tetrachloro-m-xylene
 R.T.: 3.915 min
 Delta R.T.: -0.004 min
 Response: 38933339
 Conc: 17.61 ng/ml

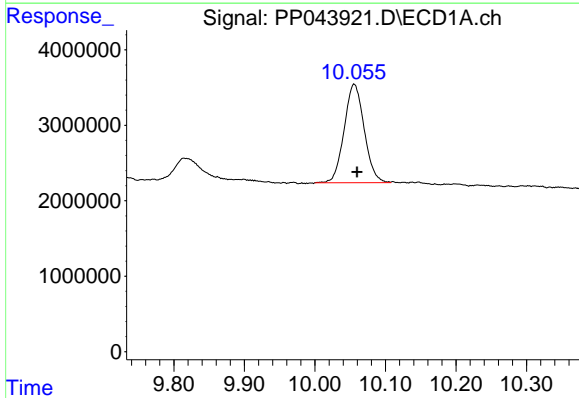
Instrument :
 ECD_P
 ClientSampleId :
 CC-A1

Manual Integrations
 APPROVED

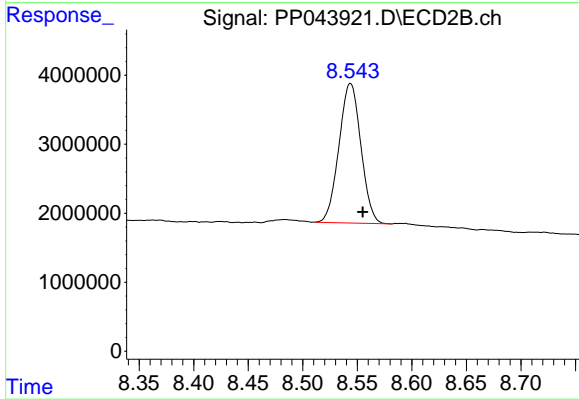
Reviewed By :Yogesh Patel 02/23/2022
 Supervised By :Ankita Jodhani 02/23/2022



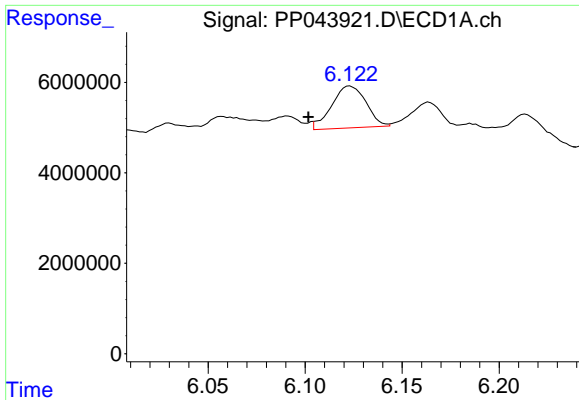
#1 Tetrachloro-m-xylene
 R.T.: 3.171 min
 Delta R.T.: -0.003 min
 Response: 36052681
 Conc: 19.19 ng/ml m



#2 Decachlorobiphenyl
 R.T.: 10.056 min
 Delta R.T.: -0.004 min
 Response: 25779840
 Conc: 21.70 ng/ml



#2 Decachlorobiphenyl
 R.T.: 8.543 min
 Delta R.T.: -0.011 min
 Response: 28262401
 Conc: 17.42 ng/ml m



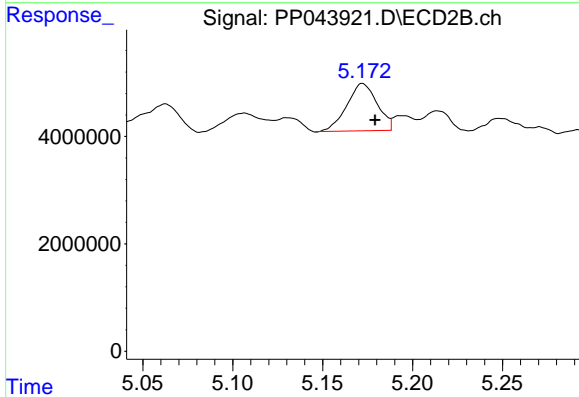
#26 AR-1254-1

R.T.: 6.122 min
 Delta R.T.: 0.021 min
 Response: 11403701
 Conc: 150.93 ng/ml

Instrument :
 ECD_P
 ClientSampleId :
 CC-A1

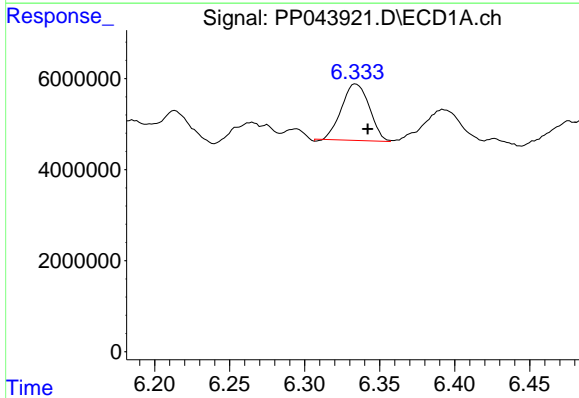
Manual Integrations
 APPROVED

Reviewed By :Yogesh Patel 02/23/2022
 Supervised By :Ankita Jodhani 02/23/2022



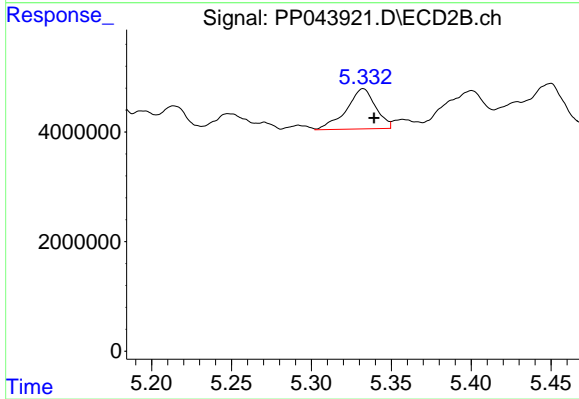
#26 AR-1254-1

R.T.: 5.172 min
 Delta R.T.: -0.007 min
 Response: 10377242
 Conc: 118.82 ng/ml m



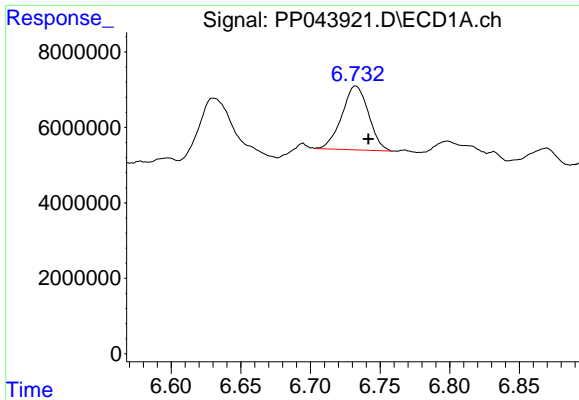
#27 AR-1254-2

R.T.: 6.333 min
 Delta R.T.: -0.009 min
 Response: 16075829
 Conc: 143.32 ng/ml m



#27 AR-1254-2

R.T.: 5.332 min
 Delta R.T.: -0.007 min
 Response: 9443229
 Conc: 123.80 ng/ml m



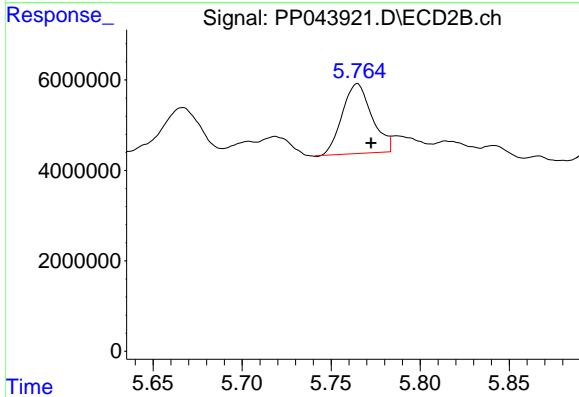
#28 AR-1254-3

R.T.: 6.732 min
 Delta R.T.: -0.010 min
 Response: 22521826
 Conc: 194.64 ng/ml

Instrument :
 ECD_P
 ClientSampleId :
 CC-A1

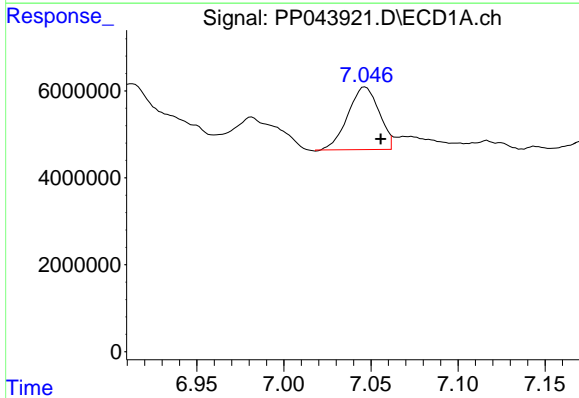
Manual Integrations
 APPROVED

Reviewed By :Yogesh Patel 02/23/2022
 Supervised By :Ankita Jodhani 02/23/2022



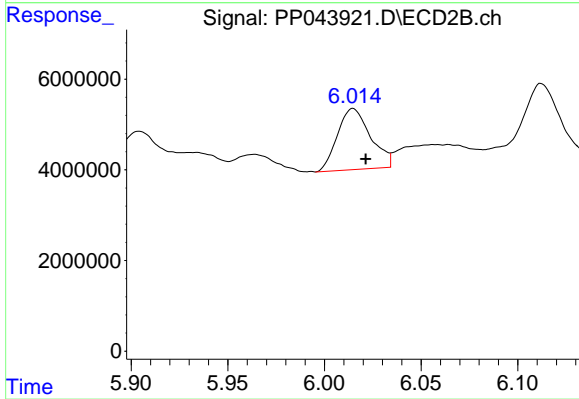
#28 AR-1254-3

R.T.: 5.764 min
 Delta R.T.: -0.008 min
 Response: 17951498
 Conc: 146.47 ng/ml m



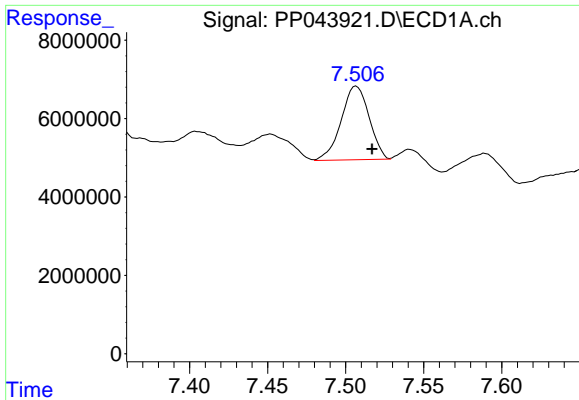
#29 AR-1254-4

R.T.: 7.046 min
 Delta R.T.: -0.010 min
 Response: 18203864
 Conc: 228.02 ng/ml m



#29 AR-1254-4

R.T.: 6.014 min
 Delta R.T.: -0.007 min
 Response: 16035926
 Conc: 203.18 ng/ml m



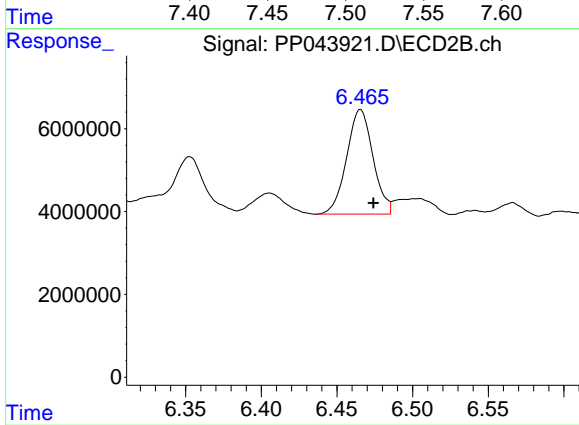
#30 AR-1254-5

R.T.: 7.506 min
 Delta R.T.: -0.011 min
 Response: 23382579
 Conc: 272.64 ng/ml

Instrument :
 ECD_P
 ClientSampleId :
 CC-A1

Manual Integrations
 APPROVED

Reviewed By :Yogesh Patel 02/23/2022
 Supervised By :Ankita Jodhani 02/23/2022



#30 AR-1254-5

R.T.: 6.465 min
 Delta R.T.: -0.009 min
 Response: 30678286
 Conc: 265.28 ng/ml m