

Data Path : Z:\pestpcbsrv\HPCHEM1\ECD\_P\Data\PP022222\  
 Data File : PP043925.D  
 Signal(s) : Signal #1: ECD1A.ch Signal #2: ECD2B.ch  
 Acq On : 22 Feb 2022 15:14  
 Operator : YP\AJ  
 Sample : N1626-05  
 Misc :  
 ALS Vial : 19 Sample Multiplier: 1

**Instrument :**  
 ECD\_P  
**ClientSampleId :**  
 CC-A3

**Manual Integrations**  
**APPROVED**

Reviewed By :Yogesh Patel 02/23/2022  
 Supervised By :Ankita Jodhani 02/23/2022

Integration File signal 1: autoint1.e  
 Integration File signal 2: autoint2.e  
 Quant Time: Feb 23 00:35:13 2022  
 Quant Method : Z:\pestpcbsrv\HPCHEM1\ECD\_P\methods\PP021022.M  
 Quant Title : GC EXTRACTABLES  
 QLast Update : Fri Feb 11 04:48:05 2022  
 Response via : Initial Calibration  
 Integrator: ChemStation

Volume Inj. : 2 µl  
 Signal #1 Phase : ZB-MR1 Signal #2 Phase: ZB-MR2  
 Signal #1 Info : 30Mx0.32mmx 0.50µ Signal #2 Info : 30M x 0.32mm x 0.25µm

Compound	RT#1	RT#2	Resp#1	Resp#2	ng/ml	ng/ml
-----						
System Monitoring Compounds						
1) SA Tetrachlo...	3.915	3.172	37219340	34499363	16.833	18.368
2) SA Decachlor...	10.057	8.544	23855546	26848047	20.082	16.548
Target Compounds						
26) L6 AR-1254-1	6.094	5.172	6600302	3254718	87.356m	37.268m#
27) L6 AR-1254-2	6.334	5.332	5527589	3028506	49.279	39.704m
28) L6 AR-1254-3	6.733	5.764	7248296	4964842	62.641	40.510m#
29) L6 AR-1254-4	7.048	6.014	8305593	3383444	104.036	42.869m#
30) L6 AR-1254-5	7.508	6.466	5991014	7500732	69.855	64.860
-----						

(f)=RT Delta > 1/2 Window (#)=Amounts differ by > 25% (m)=manual int.

Data Path : Z:\pestpcbsrv\HPCHEM1\ECD\_P\Data\PP022222\  
 Data File : PP043925.D  
 Signal(s) : Signal #1: ECD1A.ch Signal #2: ECD2B.ch  
 Acq On : 22 Feb 2022 15:14  
 Operator : YP\AJ  
 Sample : N1626-05  
 Misc :  
 ALS Vial : 19 Sample Multiplier: 1

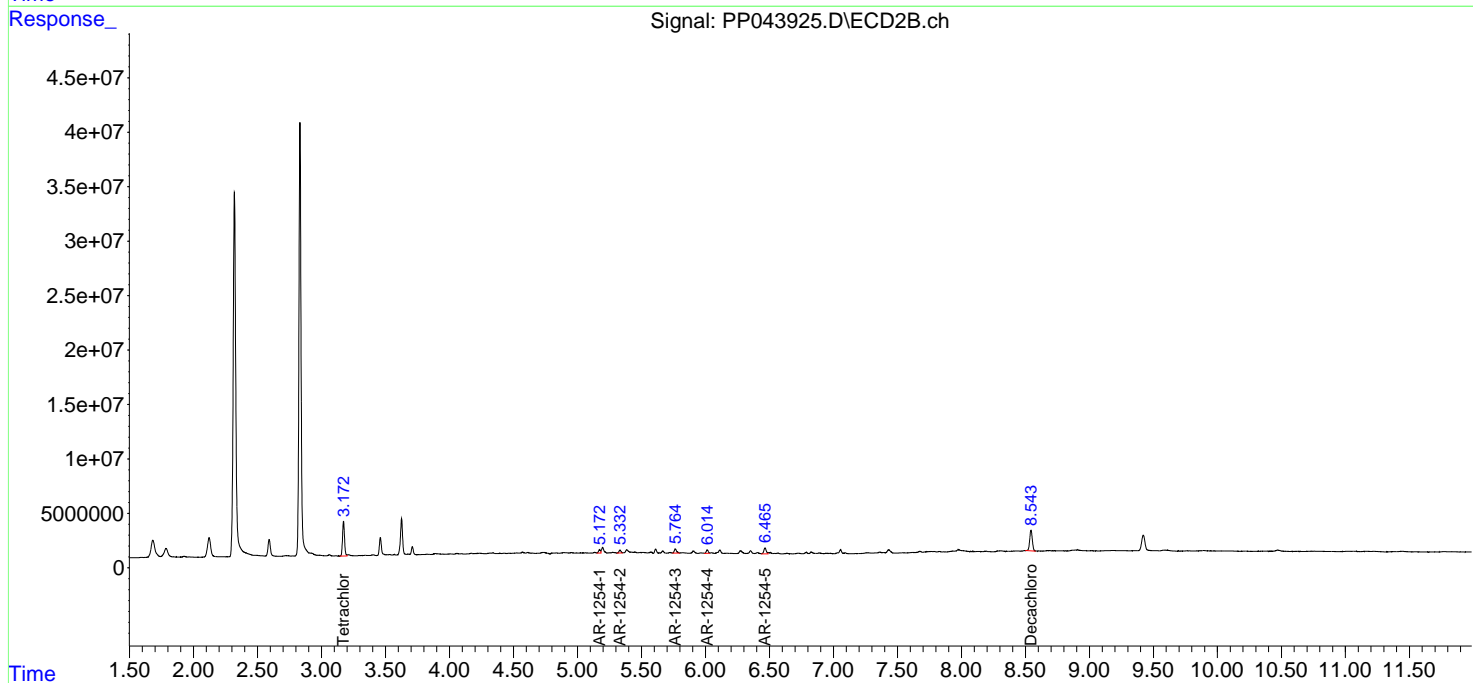
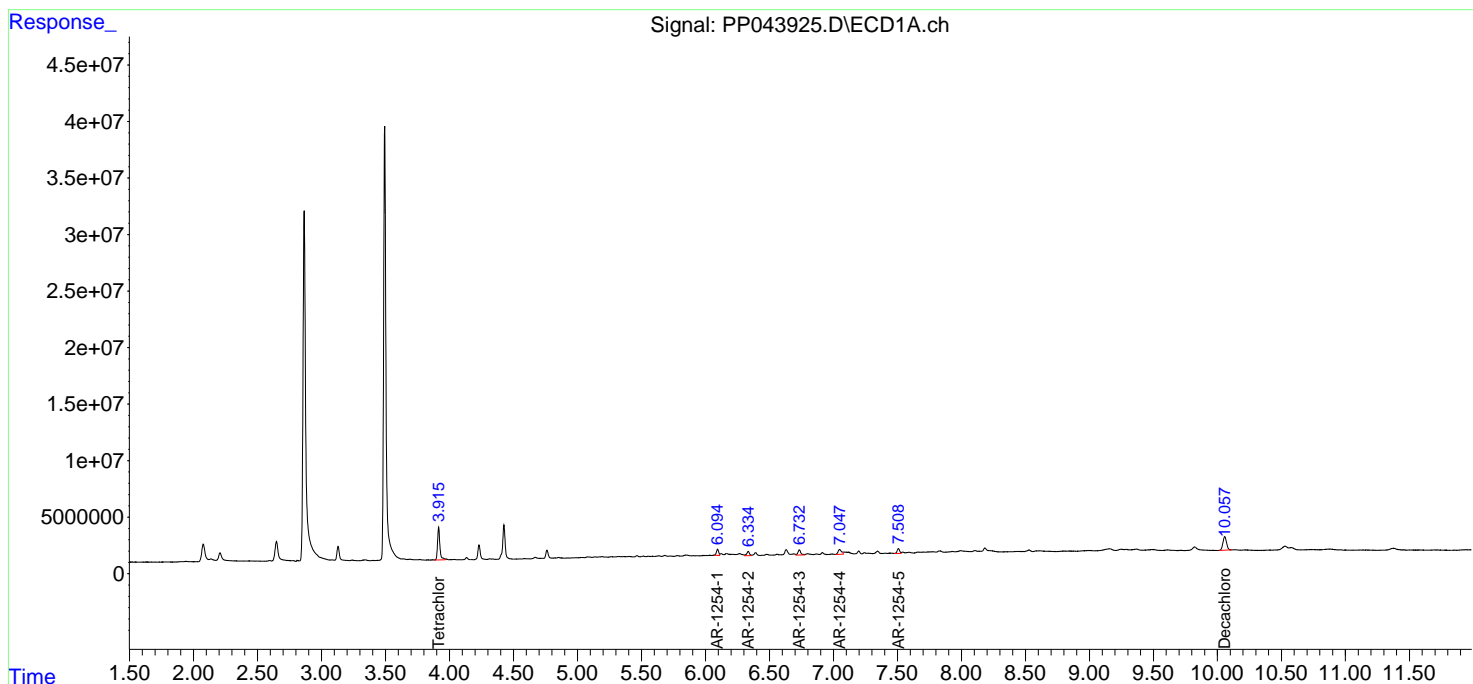
**Instrument :**  
 ECD\_P  
**ClientSampleId :**  
 CC-A3

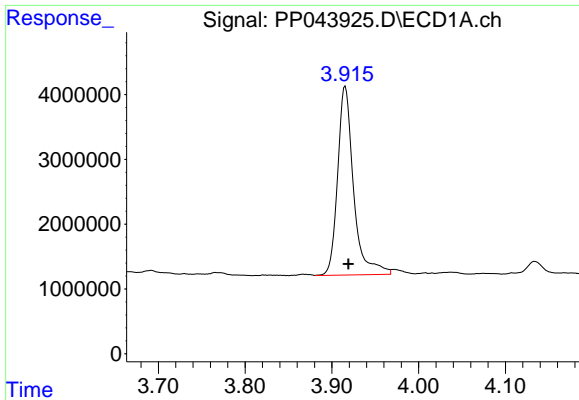
**Manual Integrations**  
**APPROVED**

Reviewed By :Yogesh Patel 02/23/2022  
 Supervised By :Ankita Jodhani 02/23/2022

Integration File signal 1: autoint1.e  
 Integration File signal 2: autoint2.e  
 Quant Time: Feb 23 00:35:13 2022  
 Quant Method : Z:\pestpcbsrv\HPCHEM1\ECD\_P\methods\PP021022.M  
 Quant Title : GC EXTRACTABLES  
 QLast Update : Fri Feb 11 04:48:05 2022  
 Response via : Initial Calibration  
 Integrator: ChemStation

Volume Inj. : 2 µl  
 Signal #1 Phase : ZB-MR1 Signal #2 Phase: ZB-MR2  
 Signal #1 Info : 30Mx0.32mmx 0.50µ Signal #2 Info : 30M x 0.32mm x 0.25µm



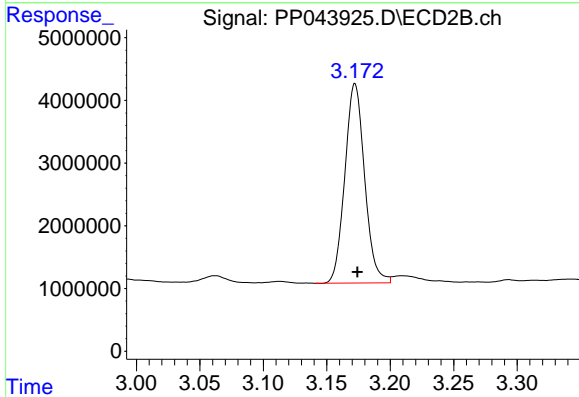


#1 Tetrachloro-m-xylene  
 R.T.: 3.915 min  
 Delta R.T.: -0.004 min  
 Response: 37219340  
 Conc: 16.83 ng/ml

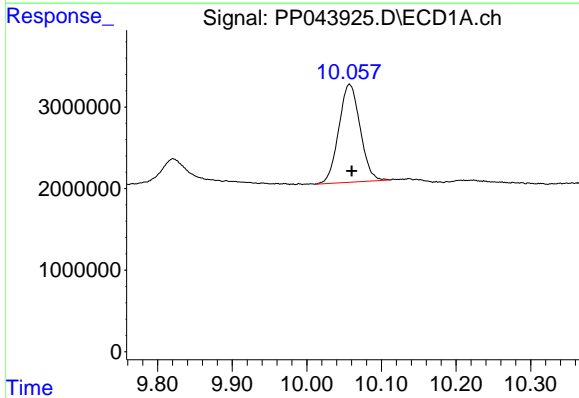
Instrument :  
 ECD\_P  
 ClientSampleId :  
 CC-A3

Manual Integrations  
 APPROVED

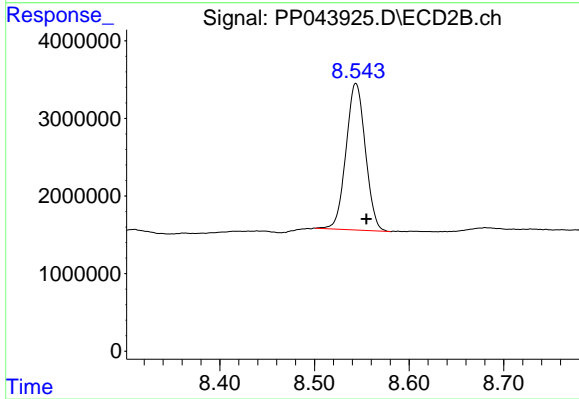
Reviewed By :Yogesh Patel 02/23/2022  
 Supervised By :Ankita Jodhani 02/23/2022



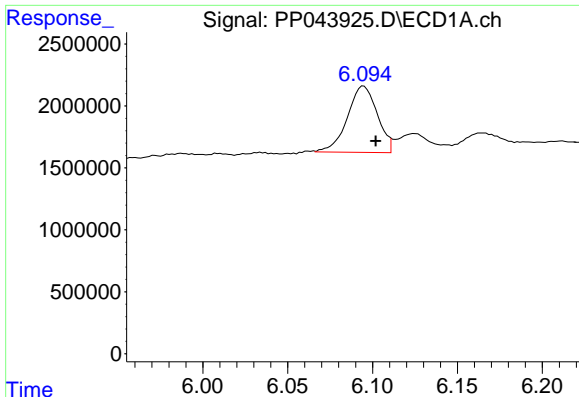
#1 Tetrachloro-m-xylene  
 R.T.: 3.172 min  
 Delta R.T.: -0.002 min  
 Response: 34499363  
 Conc: 18.37 ng/ml



#2 Decachlorobiphenyl  
 R.T.: 10.057 min  
 Delta R.T.: -0.003 min  
 Response: 23855546  
 Conc: 20.08 ng/ml



#2 Decachlorobiphenyl  
 R.T.: 8.544 min  
 Delta R.T.: -0.011 min  
 Response: 26848047  
 Conc: 16.55 ng/ml



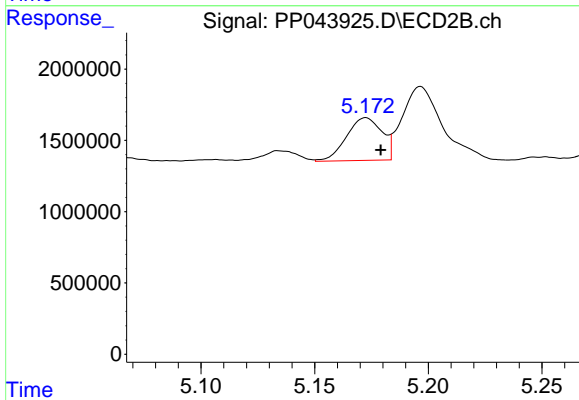
#26 AR-1254-1

R.T.: 6.094 min  
 Delta R.T.: -0.008 min  
 Response: 6600302  
 Conc: 87.36 ng/ml

Instrument :  
 ECD\_P  
 ClientSampleId :  
 CC-A3

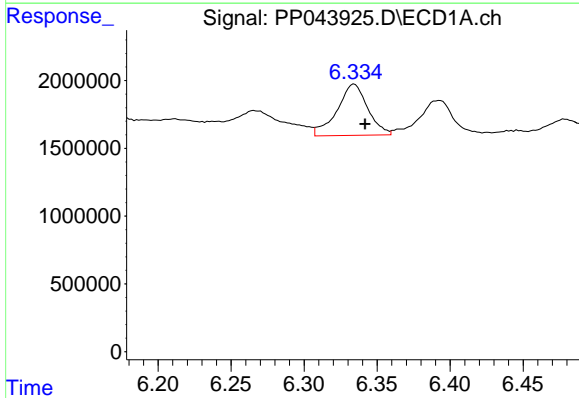
Manual Integrations  
 APPROVED

Reviewed By :Yogesh Patel 02/23/2022  
 Supervised By :Ankita Jodhani 02/23/2022



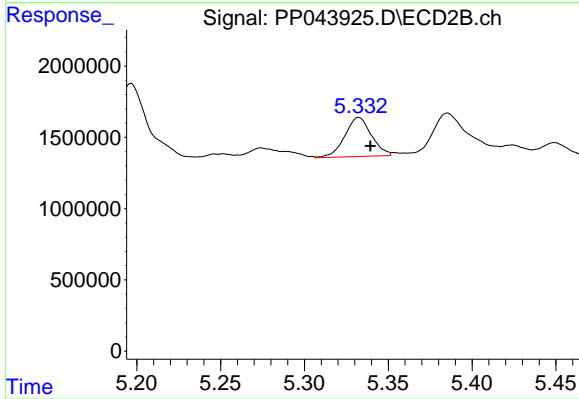
#26 AR-1254-1

R.T.: 5.172 min  
 Delta R.T.: -0.007 min  
 Response: 3254718  
 Conc: 37.27 ng/ml m



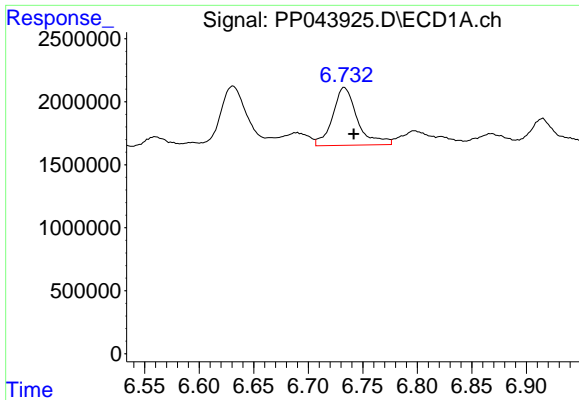
#27 AR-1254-2

R.T.: 6.334 min  
 Delta R.T.: -0.008 min  
 Response: 5527589  
 Conc: 49.28 ng/ml



#27 AR-1254-2

R.T.: 5.332 min  
 Delta R.T.: -0.007 min  
 Response: 3028506  
 Conc: 39.70 ng/ml m



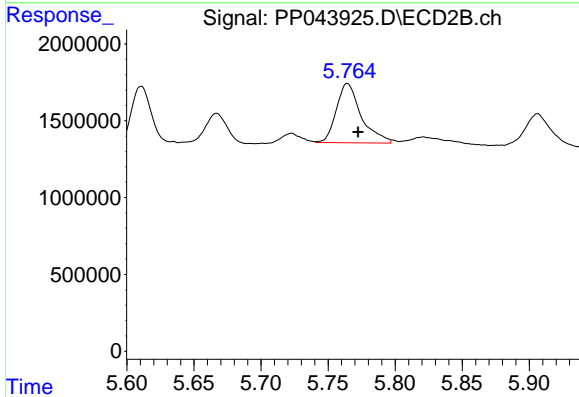
#28 AR-1254-3

R.T.: 6.733 min  
 Delta R.T.: -0.008 min  
 Response: 7248296  
 Conc: 62.64 ng/ml

Instrument :  
 ECD\_P  
 ClientSampleId :  
 CC-A3

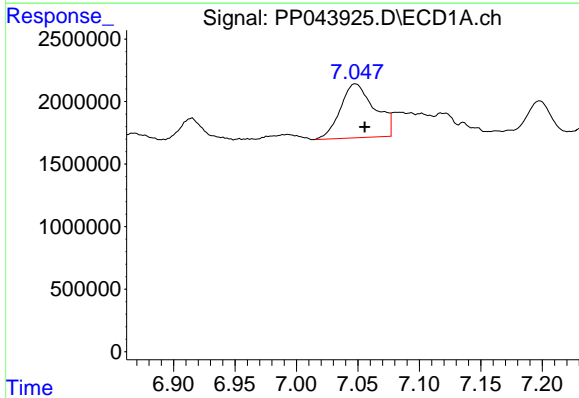
Manual Integrations  
 APPROVED

Reviewed By :Yogesh Patel 02/23/2022  
 Supervised By :Ankita Jodhani 02/23/2022



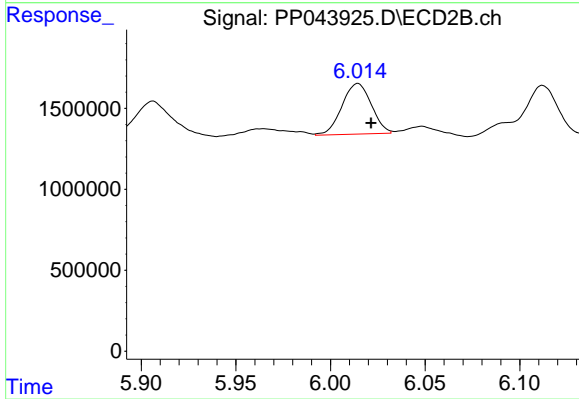
#28 AR-1254-3

R.T.: 5.764 min  
 Delta R.T.: -0.009 min  
 Response: 4964842  
 Conc: 40.51 ng/ml m



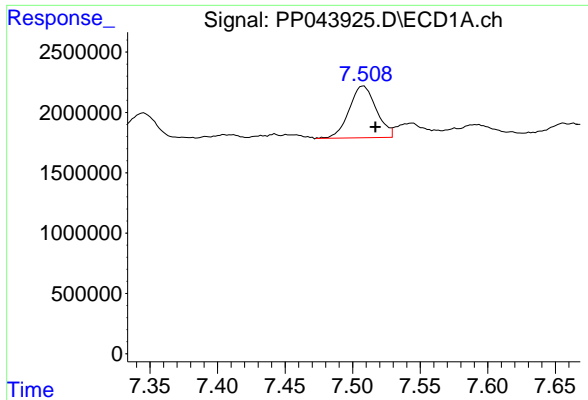
#29 AR-1254-4

R.T.: 7.048 min  
 Delta R.T.: -0.008 min  
 Response: 8305593  
 Conc: 104.04 ng/ml



#29 AR-1254-4

R.T.: 6.014 min  
 Delta R.T.: -0.007 min  
 Response: 3383444  
 Conc: 42.87 ng/ml m



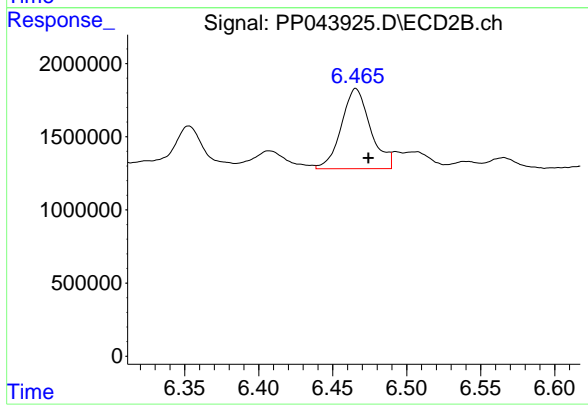
#30 AR-1254-5

R.T.: 7.508 min  
 Delta R.T.: -0.009 min  
 Response: 5991014  
 Conc: 69.86 ng/ml

Instrument :  
 ECD\_P  
 ClientSampleId :  
 CC-A3

Manual Integrations  
 APPROVED

Reviewed By :Yogesh Patel 02/23/2022  
 Supervised By :Ankita Jodhani 02/23/2022



#30 AR-1254-5

R.T.: 6.466 min  
 Delta R.T.: -0.008 min  
 Response: 7500732  
 Conc: 64.86 ng/ml