

Data Path : Z:\pestpcbsrv\HPCHEM1\ECD\_P\Data\PP022222\  
 Data File : PP043931.D  
 Signal(s) : Signal #1: ECD1A.ch Signal #2: ECD2B.ch  
 Acq On : 22 Feb 2022 17:18  
 Operator : YP\AJ  
 Sample : I.BLK  
 Misc :  
 ALS Vial : 2 Sample Multiplier: 1

Instrument :  
 ECD\_P  
 ClientSampleId :  
 I.BLK

Integration File signal 1: autoint1.e  
 Integration File signal 2: autoint2.e  
 Quant Time: Feb 23 00:38:16 2022  
 Quant Method : Z:\pestpcbsrv\HPCHEM1\ECD\_P\methods\PP021022.M  
 Quant Title : GC EXTRACTABLES  
 QLast Update : Fri Feb 11 04:48:05 2022  
 Response via : Initial Calibration  
 Integrator: ChemStation

Volume Inj. : 2 µl  
 Signal #1 Phase : ZB-MR1 Signal #2 Phase: ZB-MR2  
 Signal #1 Info : 30Mx0.32mmx 0.50µ Signal #2 Info : 30M x 0.32mm x 0.25µm

Compound	RT#1	RT#2	Resp#1	Resp#2	ng/ml	ng/ml
-----						
System Monitoring Compounds						
1) SA Tetrachlo...	3.917	3.174	25664162	24238405	11.607	12.905
2) SA Decachlor...	10.057	8.543	15356268	18806639	12.927	11.592

Target Compounds

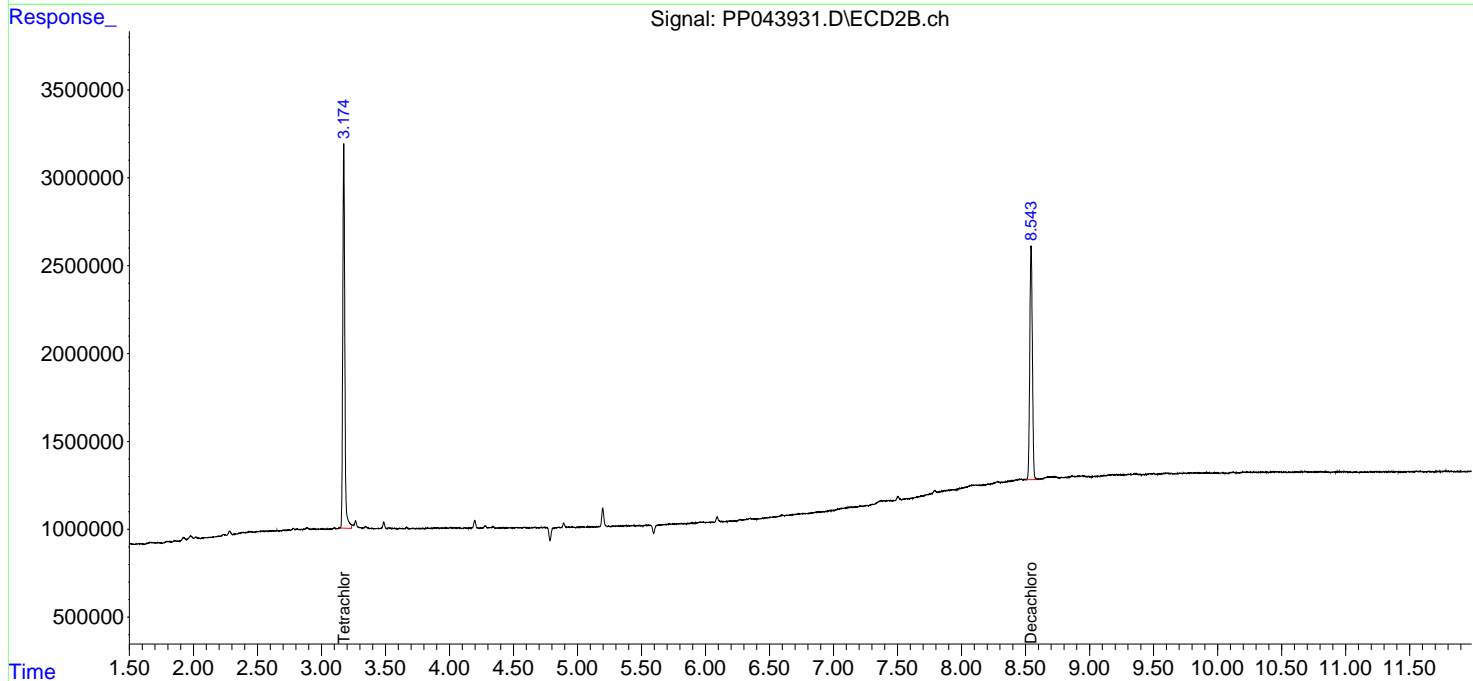
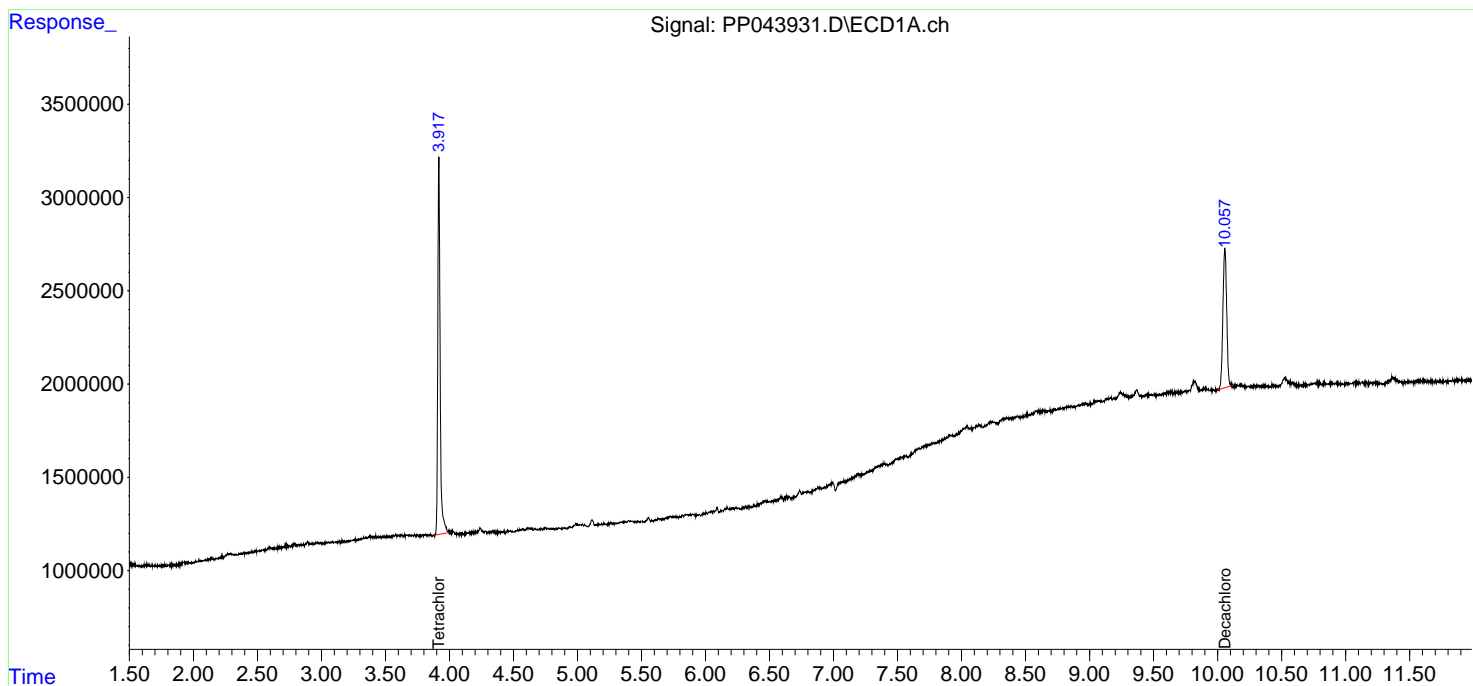
-----  
 (f)=RT Delta > 1/2 Window (#)=Amounts differ by > 25% (m)=manual int.

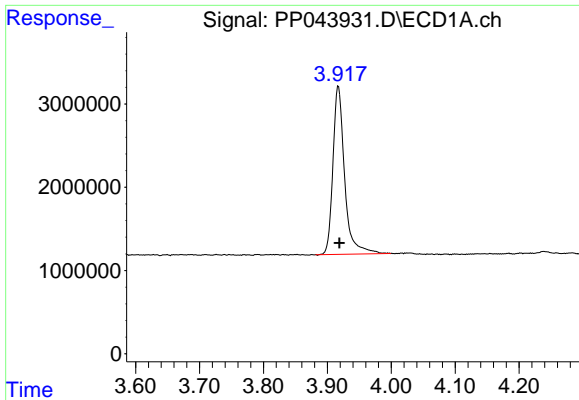
Data Path : Z:\pestpcbsrv\HPCHEM1\ECD\_P\Data\PP022222\  
 Data File : PP043931.D  
 Signal(s) : Signal #1: ECD1A.ch Signal #2: ECD2B.ch  
 Acq On : 22 Feb 2022 17:18  
 Operator : YP\AJ  
 Sample : I.BLK  
 Misc :  
 ALS Vial : 2 Sample Multiplier: 1

Instrument :  
 ECD\_P  
 ClientSampleId :  
 I.BLK

Integration File signal 1: autoint1.e  
 Integration File signal 2: autoint2.e  
 Quant Time: Feb 23 00:38:16 2022  
 Quant Method : Z:\pestpcbsrv\HPCHEM1\ECD\_P\methods\PP021022.M  
 Quant Title : GC EXTRACTABLES  
 QLast Update : Fri Feb 11 04:48:05 2022  
 Response via : Initial Calibration  
 Integrator: ChemStation

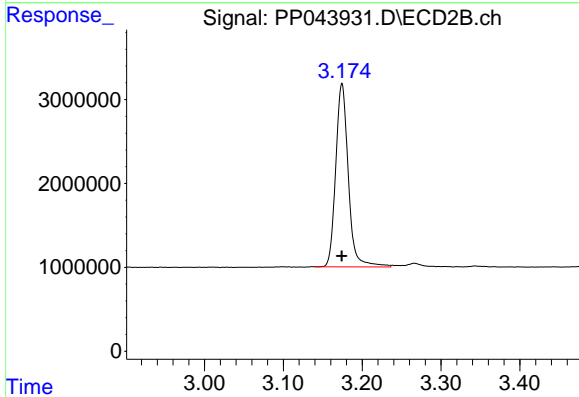
Volume Inj. : 2 µl  
 Signal #1 Phase : ZB-MR1 Signal #2 Phase: ZB-MR2  
 Signal #1 Info : 30Mx0.32mmx 0.50µ Signal #2 Info : 30M x 0.32mm x 0.25µm



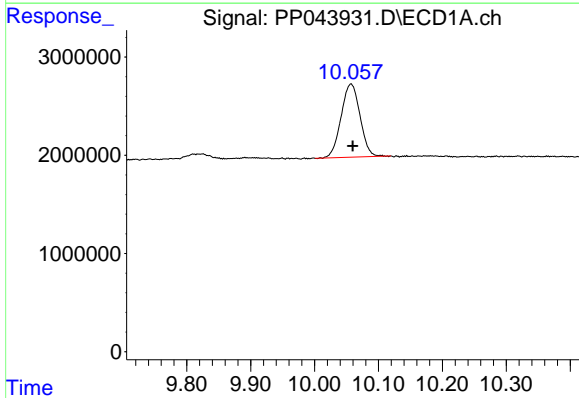


#1 Tetrachloro-m-xylene  
 R.T.: 3.917 min  
 Delta R.T.: -0.002 min  
 Response: 25664162  
 Conc: 11.61 ng/ml

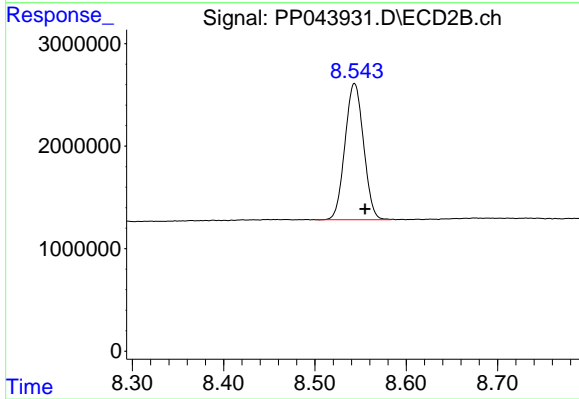
Instrument :  
 ECD\_P  
 ClientSampleId :  
 I.BLK



#1 Tetrachloro-m-xylene  
 R.T.: 3.174 min  
 Delta R.T.: 0.000 min  
 Response: 24238405  
 Conc: 12.90 ng/ml



#2 Decachlorobiphenyl  
 R.T.: 10.057 min  
 Delta R.T.: -0.003 min  
 Response: 15356268  
 Conc: 12.93 ng/ml



#2 Decachlorobiphenyl  
 R.T.: 8.543 min  
 Delta R.T.: -0.012 min  
 Response: 18806639  
 Conc: 11.59 ng/ml